



Full wwPDB X-ray Structure Validation Report ⓘ

Sep 14, 2023 – 09:07 AM EDT

PDB ID : 4RZQ
Title : Structural Analysis of Substrate, Reaction Intermediate and Product Binding in Haemophilus influenzae Biotin Carboxylase
Authors : Broussard, T.C.; Pakhomova, S.; Neau, D.B.; Champion, T.S.; Bonnot, R.; Waldrop, G.L.
Deposited on : 2014-12-23
Resolution : 1.98 Å(reported)

This is a Full wwPDB X-ray Structure Validation Report for a publicly released PDB entry.

We welcome your comments at validation@mail.wwpdb.org

A user guide is available at

<https://www.wwpdb.org/validation/2017/XrayValidationReportHelp>

with specific help available everywhere you see the ⓘ symbol.

The types of validation reports are described at

<http://www.wwpdb.org/validation/2017/FAQs#types>.

The following versions of software and data (see [references ⓘ](#)) were used in the production of this report:

MolProbity : 4.02b-467
Mogul : 1.8.5 (274361), CSD as541be (2020)
Xtriage (Phenix) : 1.13
EDS : 2.35.1
buster-report : 1.1.7 (2018)
Percentile statistics : 20191225.v01 (using entries in the PDB archive December 25th 2019)
Refmac : 5.8.0158
CCP4 : 7.0.044 (Gargrove)
Ideal geometry (proteins) : Engh & Huber (2001)
Ideal geometry (DNA, RNA) : Parkinson et al. (1996)
Validation Pipeline (wwPDB-VP) : 2.35.1

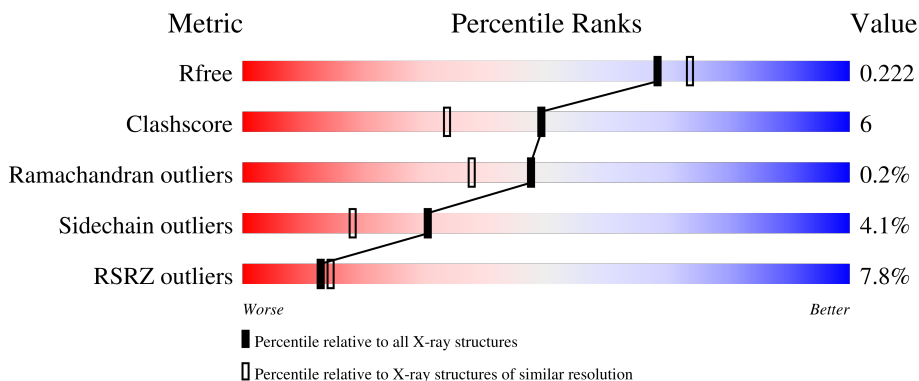
1 Overall quality at a glance

The following experimental techniques were used to determine the structure:

X-RAY DIFFRACTION

The reported resolution of this entry is 1.98 Å.

Percentile scores (ranging between 0-100) for global validation metrics of the entry are shown in the following graphic. The table shows the number of entries on which the scores are based.



Metric	Whole archive (#Entries)	Similar resolution (#Entries, resolution range(Å))
R_{free}	130704	11647 (2.00-1.96)
Clashscore	141614	1014 (1.98-1.98)
Ramachandran outliers	138981	1006 (1.98-1.98)
Sidechain outliers	138945	1006 (1.98-1.98)
RSRZ outliers	127900	11410 (2.00-1.96)

The table below summarises the geometric issues observed across the polymeric chains and their fit to the electron density. The red, orange, yellow and green segments of the lower bar indicate the fraction of residues that contain outliers for ≥ 3 , 2, 1 and 0 types of geometric quality criteria respectively. A grey segment represents the fraction of residues that are not modelled. The numeric value for each fraction is indicated below the corresponding segment, with a dot representing fractions $\leq 5\%$. The upper red bar (where present) indicates the fraction of residues that have poor fit to the electron density. The numeric value is given above the bar.

Mol	Chain	Length	Quality of chain
1	A	468	

The following table lists non-polymeric compounds, carbohydrate monomers and non-standard residues in protein, DNA, RNA chains that are outliers for geometric or electron-density-fit criteria:

Mol	Type	Chain	Res	Chirality	Geometry	Clashes	Electron density
2	Y7Y	A	501	-	-	X	-

2 Entry composition

There are 4 unique types of molecules in this entry. The entry contains 3385 atoms, of which 0 are hydrogens and 0 are deuteriums.

In the tables below, the ZeroOcc column contains the number of atoms modelled with zero occupancy, the AltConf column contains the number of residues with at least one atom in alternate conformation and the Trace column contains the number of residues modelled with at most 2 atoms.

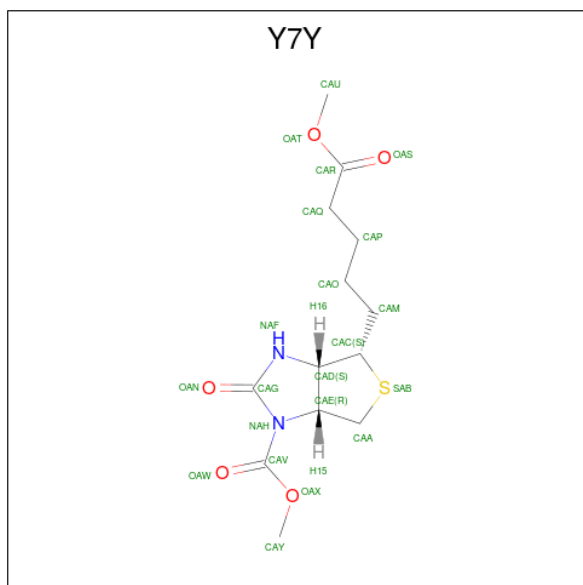
- Molecule 1 is a protein called Biotin carboxylase.

Mol	Chain	Residues	Atoms					ZeroOcc	AltConf	Trace
			Total	C	N	O	S			
1	A	422	3253	2051	574	610	18	0	2	0

There are 20 discrepancies between the modelled and reference sequences:

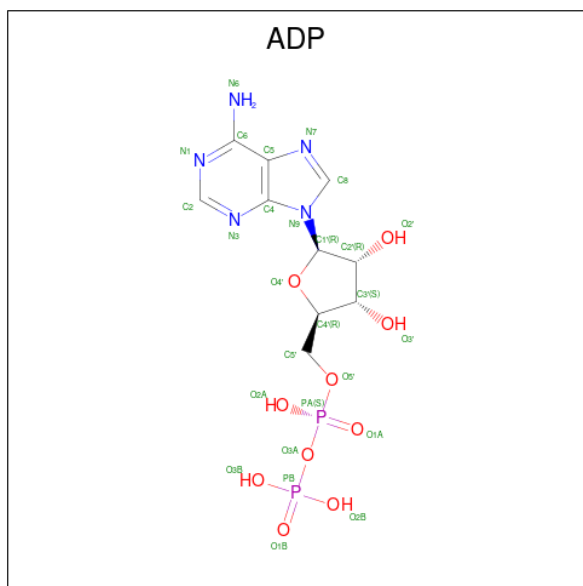
Chain	Residue	Modelled	Actual	Comment	Reference
A	-19	MET	-	expression tag	UNP P43873
A	-18	GLY	-	expression tag	UNP P43873
A	-17	SER	-	expression tag	UNP P43873
A	-16	SER	-	expression tag	UNP P43873
A	-15	HIS	-	expression tag	UNP P43873
A	-14	HIS	-	expression tag	UNP P43873
A	-13	HIS	-	expression tag	UNP P43873
A	-12	HIS	-	expression tag	UNP P43873
A	-11	HIS	-	expression tag	UNP P43873
A	-10	HIS	-	expression tag	UNP P43873
A	-9	SER	-	expression tag	UNP P43873
A	-8	SER	-	expression tag	UNP P43873
A	-7	GLY	-	expression tag	UNP P43873
A	-6	LEU	-	expression tag	UNP P43873
A	-5	VAL	-	expression tag	UNP P43873
A	-4	PRO	-	expression tag	UNP P43873
A	-3	ARG	-	expression tag	UNP P43873
A	-2	GLY	-	expression tag	UNP P43873
A	-1	SER	-	expression tag	UNP P43873
A	0	HIS	-	expression tag	UNP P43873

- Molecule 2 is methyl (3aS,4S,6aR)-4-(5-methoxy-5-oxopentyl)-2-oxohexahydro-1H-thieno[3,4-d]imidazole-1-carboxylate (three-letter code: Y7Y) (formula: C₁₃H₂₀N₂O₅S).



Mol	Chain	Residues	Atoms					ZeroOcc	AltConf
			Total	C	N	O	S		
2	A	1	21	13	2	5	1	0	0

- Molecule 3 is ADENOSINE-5'-DIPHOSPHATE (three-letter code: ADP) (formula: $C_{10}H_{15}N_5O_{10}P_2$).



Mol	Chain	Residues	Atoms					ZeroOcc	AltConf
			Total	C	N	O	P		
3	A	1	27	10	5	10	2	0	0

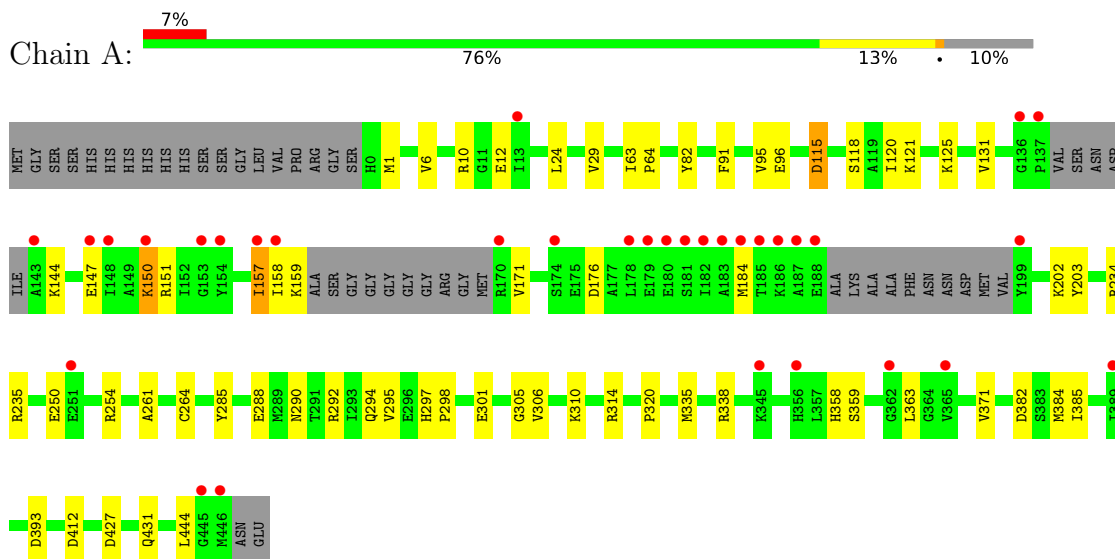
- Molecule 4 is water.

Mol	Chain	Residues	Atoms		ZeroOcc	AltConf
4	A	84	Total 84	O 84	0	0

3 Residue-property plots [i](#)

These plots are drawn for all protein, RNA, DNA and oligosaccharide chains in the entry. The first graphic for a chain summarises the proportions of the various outlier classes displayed in the second graphic. The second graphic shows the sequence view annotated by issues in geometry and electron density. Residues are color-coded according to the number of geometric quality criteria for which they contain at least one outlier: green = 0, yellow = 1, orange = 2 and red = 3 or more. A red dot above a residue indicates a poor fit to the electron density ($RSRZ > 2$). Stretches of 2 or more consecutive residues without any outlier are shown as a green connector. Residues present in the sample, but not in the model, are shown in grey.

- Molecule 1: Biotin carboxylase



4 Data and refinement statistics i

Property	Value	Source
Space group	P 64	Depositor
Cell constants a, b, c, α , β , γ	86.20Å 86.20Å 102.36Å 90.00° 90.00° 120.00°	Depositor
Resolution (Å)	39.72 – 1.98 39.72 – 1.98	Depositor EDS
% Data completeness (in resolution range)	99.9 (39.72-1.98) 99.9 (39.72-1.98)	Depositor EDS
R_{merge}	(Not available)	Depositor
R_{sym}	0.06	Depositor
$\langle I/\sigma(I) \rangle$ ¹	2.68 (at 1.98Å)	Xtrriage
Refinement program	REFMAC 5.8.0073	Depositor
R, R_{free}	0.176 , 0.217 0.185 , 0.222	Depositor DCC
R_{free} test set	1464 reflections (4.87%)	wwPDB-VP
Wilson B-factor (Å ²)	31.0	Xtrriage
Anisotropy	0.019	Xtrriage
Bulk solvent k_{sol} (e/Å ³), B_{sol} (Å ²)	0.34 , 43.7	EDS
L-test for twinning ²	$\langle L \rangle = 0.48$, $\langle L^2 \rangle = 0.32$	Xtrriage
Estimated twinning fraction	0.052 for h,-h-k,-l	Xtrriage
F_o, F_c correlation	0.96	EDS
Total number of atoms	3385	wwPDB-VP
Average B, all atoms (Å ²)	44.0	wwPDB-VP

Xtrriage's analysis on translational NCS is as follows: *The largest off-origin peak in the Patterson function is 4.86% of the height of the origin peak. No significant pseudotranslation is detected.*

¹Intensities estimated from amplitudes.

²Theoretical values of $\langle |L| \rangle$, $\langle L^2 \rangle$ for acentric reflections are 0.5, 0.333 respectively for untwinned datasets, and 0.375, 0.2 for perfectly twinned datasets.

5 Model quality [i](#)

5.1 Standard geometry [i](#)

Bond lengths and bond angles in the following residue types are not validated in this section: ADP, Y7Y

The Z score for a bond length (or angle) is the number of standard deviations the observed value is removed from the expected value. A bond length (or angle) with $|Z| > 5$ is considered an outlier worth inspection. RMSZ is the root-mean-square of all Z scores of the bond lengths (or angles).

Mol	Chain	Bond lengths		Bond angles	
		RMSZ	# Z >5	RMSZ	# Z >5
1	A	0.91	3/3315 (0.1%)	0.95	3/4482 (0.1%)

All (3) bond length outliers are listed below:

Mol	Chain	Res	Type	Atoms	Z	Observed(Å)	Ideal(Å)
1	A	359	SER	CB-OG	-5.79	1.34	1.42
1	A	12	GLU	CD-OE2	5.10	1.31	1.25
1	A	305	GLY	C-O	-5.07	1.15	1.23

All (3) bond angle outliers are listed below:

Mol	Chain	Res	Type	Atoms	Z	Observed(°)	Ideal(°)
1	A	384	MET	CG-SD-CE	-9.74	84.61	100.20
1	A	363	LEU	CB-CG-CD1	5.39	120.16	111.00
1	A	393	ASP	CB-CG-OD1	-5.16	113.66	118.30

There are no chirality outliers.

There are no planarity outliers.

5.2 Too-close contacts [i](#)

In the following table, the Non-H and H(model) columns list the number of non-hydrogen atoms and hydrogen atoms in the chain respectively. The H(added) column lists the number of hydrogen atoms added and optimized by MolProbity. The Clashes column lists the number of clashes within the asymmetric unit, whereas Symm-Clashes lists symmetry-related clashes.

Mol	Chain	Non-H	H(model)	H(added)	Clashes	Symm-Clashes
1	A	3253	0	3242	37	0
2	A	21	0	20	10	0

Continued on next page...

Continued from previous page...

Mol	Chain	Non-H	H(model)	H(added)	Clashes	Symm-Clashes
3	A	27	0	12	0	0
4	A	84	0	0	2	0
All	All	3385	0	3274	39	0

The all-atom clashscore is defined as the number of clashes found per 1000 atoms (including hydrogen atoms). The all-atom clashscore for this structure is 6.

All (39) close contacts within the same asymmetric unit are listed below, sorted by their clash magnitude.

Atom-1	Atom-2	Interatomic distance (Å)	Clash overlap (Å)
1:A:10:ARG:HH11	2:A:501:Y7Y:H1	1.37	0.87
1:A:10:ARG:HH11	2:A:501:Y7Y:CAU	1.97	0.78
1:A:131:VAL:HG22	1:A:285:TYR:HB3	1.73	0.70
1:A:10:ARG:HG3	2:A:501:Y7Y:H2	1.72	0.69
1:A:144:LYS:O	1:A:147:GLU:HG3	1.95	0.67
1:A:147:GLU:HA	1:A:150:LYS:HB3	1.81	0.62
2:A:501:Y7Y:H15	2:A:501:Y7Y:H19	1.82	0.61
1:A:91:PHE:O	1:A:95:VAL:HG23	2.00	0.60
1:A:10:ARG:NH1	2:A:501:Y7Y:H1	2.14	0.56
1:A:157:ILE:HG23	1:A:171:VAL:HG22	1.87	0.56
1:A:115:ASP:OD2	1:A:118:SER:HB3	2.09	0.52
1:A:358[A]:HIS:NE2	4:A:653:HOH:O	2.34	0.52
1:A:371:VAL:HG21	1:A:385:ILE:HB	1.92	0.51
1:A:82:TYR:CE1	2:A:501:Y7Y:H9	2.45	0.51
2:A:501:Y7Y:H19	2:A:501:Y7Y:CAE	2.39	0.50
1:A:6:VAL:HG22	1:A:29:VAL:HB	1.94	0.50
1:A:338:ARG:HH12	2:A:501:Y7Y:H14	1.76	0.50
1:A:382:ASP:OD2	2:A:501:Y7Y:OAT	2.30	0.50
1:A:358[A]:HIS:CE1	4:A:653:HOH:O	2.64	0.49
1:A:290:ASN:OD1	1:A:294:GLN:NE2	2.45	0.49
1:A:382:ASP:OD2	2:A:501:Y7Y:CAU	2.61	0.48
1:A:144:LYS:O	1:A:147:GLU:CG	2.61	0.47
1:A:157:ILE:HG13	1:A:203:TYR:HB2	1.96	0.47
1:A:261:ALA:O	1:A:264:CYS:HB2	2.14	0.47
1:A:250:GLU:OE2	1:A:254:ARG:NH1	2.48	0.46
1:A:24:LEU:HD11	1:A:310:LYS:HG2	1.98	0.46
1:A:150:LYS:HD3	1:A:150:LYS:C	2.37	0.45
1:A:427:ASP:O	1:A:431:GLN:HG3	2.17	0.45
1:A:63:ILE:HB	1:A:64:PRO:HD3	1.98	0.45
1:A:82:TYR:CZ	1:A:295:VAL:HG22	2.52	0.45
1:A:297:HIS:N	1:A:298:PRO:CD	2.83	0.42

Continued on next page...

Continued from previous page...

Atom-1	Atom-2	Interatomic distance (Å)	Clash overlap (Å)
1:A:158:ILE:O	1:A:159:LYS:CB	2.68	0.42
1:A:292:ARG:HH12	1:A:294:GLN:HG2	1.85	0.42
1:A:301:GLU:HG2	1:A:306:VAL:O	2.19	0.42
1:A:314[A]:ARG:NH2	1:A:320:PRO:O	2.51	0.41
1:A:115:ASP:OD2	1:A:118:SER:CB	2.68	0.41
1:A:150:LYS:HG3	1:A:151:ARG:N	2.35	0.41
1:A:292:ARG:NH1	1:A:294:GLN:HG2	2.36	0.41
1:A:120:ILE:O	1:A:121:LYS:C	2.60	0.40

There are no symmetry-related clashes.

5.3 Torsion angles [i](#)

5.3.1 Protein backbone [i](#)

In the following table, the Percentiles column shows the percent Ramachandran outliers of the chain as a percentile score with respect to all X-ray entries followed by that with respect to entries of similar resolution.

The Analysed column shows the number of residues for which the backbone conformation was analysed, and the total number of residues.

Mol	Chain	Analysed	Favoured	Allowed	Outliers	Percentiles
1	A	416/468 (89%)	397 (95%)	18 (4%)	1 (0%)	47 38

All (1) Ramachandran outliers are listed below:

Mol	Chain	Res	Type
1	A	176	ASP

5.3.2 Protein sidechains [i](#)

In the following table, the Percentiles column shows the percent sidechain outliers of the chain as a percentile score with respect to all X-ray entries followed by that with respect to entries of similar resolution.

The Analysed column shows the number of residues for which the sidechain conformation was analysed, and the total number of residues.

Mol	Chain	Analysed	Rotameric	Outliers	Percentiles
1	A	341/381 (90%)	327 (96%)	14 (4%)	30 18

All (14) residues with a non-rotameric sidechain are listed below:

Mol	Chain	Res	Type
1	A	1	MET
1	A	96	GLU
1	A	115	ASP
1	A	125	LYS
1	A	150	LYS
1	A	157	ILE
1	A	184	MET
1	A	202	LYS
1	A	234	ARG
1	A	235	ARG
1	A	288	GLU
1	A	335	MET
1	A	412	ASP
1	A	444	LEU

Sometimes sidechains can be flipped to improve hydrogen bonding and reduce clashes. All (3) such sidechains are listed below:

Mol	Chain	Res	Type
1	A	145	ASN
1	A	355	ASN
1	A	403	GLN

5.3.3 RNA [i](#)

There are no RNA molecules in this entry.

5.4 Non-standard residues in protein, DNA, RNA chains [i](#)

There are no non-standard protein/DNA/RNA residues in this entry.

5.5 Carbohydrates [i](#)

There are no monosaccharides in this entry.

5.6 Ligand geometry

2 ligands are modelled in this entry.

In the following table, the Counts columns list the number of bonds (or angles) for which Mogul statistics could be retrieved, the number of bonds (or angles) that are observed in the model and the number of bonds (or angles) that are defined in the Chemical Component Dictionary. The Link column lists molecule types, if any, to which the group is linked. The Z score for a bond length (or angle) is the number of standard deviations the observed value is removed from the expected value. A bond length (or angle) with $|Z| > 2$ is considered an outlier worth inspection. RMSZ is the root-mean-square of all Z scores of the bond lengths (or angles).

Mol	Type	Chain	Res	Link	Bond lengths			Bond angles		
					Counts	RMSZ	# Z > 2	Counts	RMSZ	# Z > 2
2	Y7Y	A	501	-	22,22,22	3.49	11 (50%)	28,30,30	4.59	13 (46%)
3	ADP	A	502	-	24,29,29	1.12	1 (4%)	29,45,45	1.85	5 (17%)

In the following table, the Chirals column lists the number of chiral outliers, the number of chiral centers analysed, the number of these observed in the model and the number defined in the Chemical Component Dictionary. Similar counts are reported in the Torsion and Rings columns. '-' means no outliers of that kind were identified.

Mol	Type	Chain	Res	Link	Chirals	Torsions	Rings
2	Y7Y	A	501	-	-	11/15/40/40	0/2/2/2
3	ADP	A	502	-	-	3/12/32/32	0/3/3/3

All (12) bond length outliers are listed below:

Mol	Chain	Res	Type	Atoms	Z	Observed(Å)	Ideal(Å)
2	A	501	Y7Y	CAD-CAE	6.97	1.63	1.54
2	A	501	Y7Y	CAE-NAH	6.14	1.55	1.48
2	A	501	Y7Y	CAV-NAH	-5.86	1.31	1.40
2	A	501	Y7Y	CAG-NAH	-5.41	1.31	1.40
2	A	501	Y7Y	CAQ-CAR	5.37	1.66	1.50
2	A	501	Y7Y	OAT-CAR	4.27	1.46	1.33
2	A	501	Y7Y	CAM-CAC	4.19	1.62	1.52
2	A	501	Y7Y	CAA-CAE	-3.97	1.46	1.53
3	A	502	ADP	O4'-C1'	3.16	1.45	1.41
2	A	501	Y7Y	CAC-CAD	2.81	1.59	1.53
2	A	501	Y7Y	OAN-CAG	-2.79	1.17	1.23
2	A	501	Y7Y	CAG-NAF	2.37	1.38	1.35

All (18) bond angle outliers are listed below:

Mol	Chain	Res	Type	Atoms	Z	Observed(°)	Ideal(°)
2	A	501	Y7Y	CAD-CAC-SAB	-11.08	94.65	105.20
2	A	501	Y7Y	OAN-CAG-NAH	-10.57	111.22	125.99
2	A	501	Y7Y	NAF-CAG-NAH	8.10	120.45	107.02
2	A	501	Y7Y	CAE-NAH-CAV	7.82	140.14	120.62
2	A	501	Y7Y	CAA-SAB-CAC	7.23	104.75	89.89
2	A	501	Y7Y	CAE-NAH-CAG	-5.92	104.95	112.16
2	A	501	Y7Y	CAC-CAD-CAE	5.68	115.55	108.94
2	A	501	Y7Y	CAY-OAX-CAV	-5.59	108.88	115.34
2	A	501	Y7Y	CAM-CAC-SAB	4.69	125.61	112.64
2	A	501	Y7Y	OAX-CAV-OAW	-4.42	116.31	124.63
3	A	502	ADP	PA-O3A-PB	-4.30	118.08	132.83
3	A	502	ADP	O3'-C3'-C2'	-4.08	98.63	111.82
3	A	502	ADP	O3'-C3'-C4'	3.96	122.49	111.05
3	A	502	ADP	N3-C2-N1	-3.79	122.75	128.68
2	A	501	Y7Y	CAA-CAE-NAH	-2.83	106.10	113.30
3	A	502	ADP	C4-C5-N7	-2.78	106.50	109.40
2	A	501	Y7Y	CAO-CAP-CAQ	2.32	121.54	113.19
2	A	501	Y7Y	CAA-CAE-CAD	2.08	111.04	108.58

There are no chirality outliers.

All (14) torsion outliers are listed below:

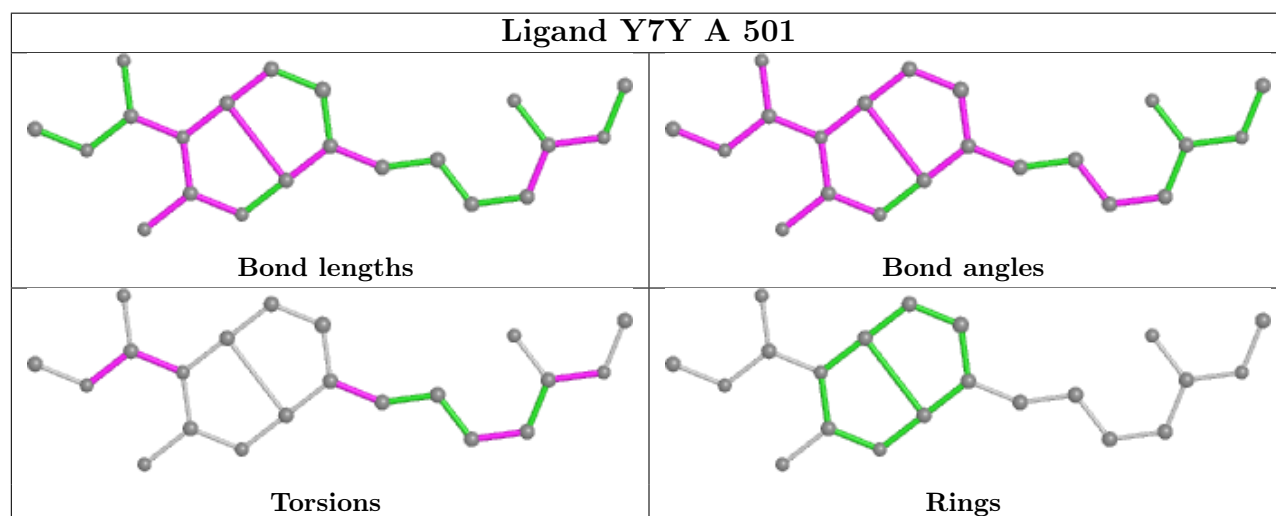
Mol	Chain	Res	Type	Atoms
2	A	501	Y7Y	SAB-CAC-CAM-CAO
2	A	501	Y7Y	CAD-CAC-CAM-CAO
2	A	501	Y7Y	OAW-CAV-NAH-CAE
2	A	501	Y7Y	OAX-CAV-NAH-CAE
2	A	501	Y7Y	OAX-CAV-NAH-CAG
2	A	501	Y7Y	NAH-CAV-OAX-CAY
2	A	501	Y7Y	OAW-CAV-OAX-CAY
3	A	502	ADP	O4'-C4'-C5'-O5'
2	A	501	Y7Y	CAO-CAP-CAQ-CAR
3	A	502	ADP	C3'-C4'-C5'-O5'
2	A	501	Y7Y	OAW-CAV-NAH-CAG
2	A	501	Y7Y	CAQ-CAR-OAT-CAU
2	A	501	Y7Y	OAS-CAR-OAT-CAU
3	A	502	ADP	C4'-C5'-O5'-PA

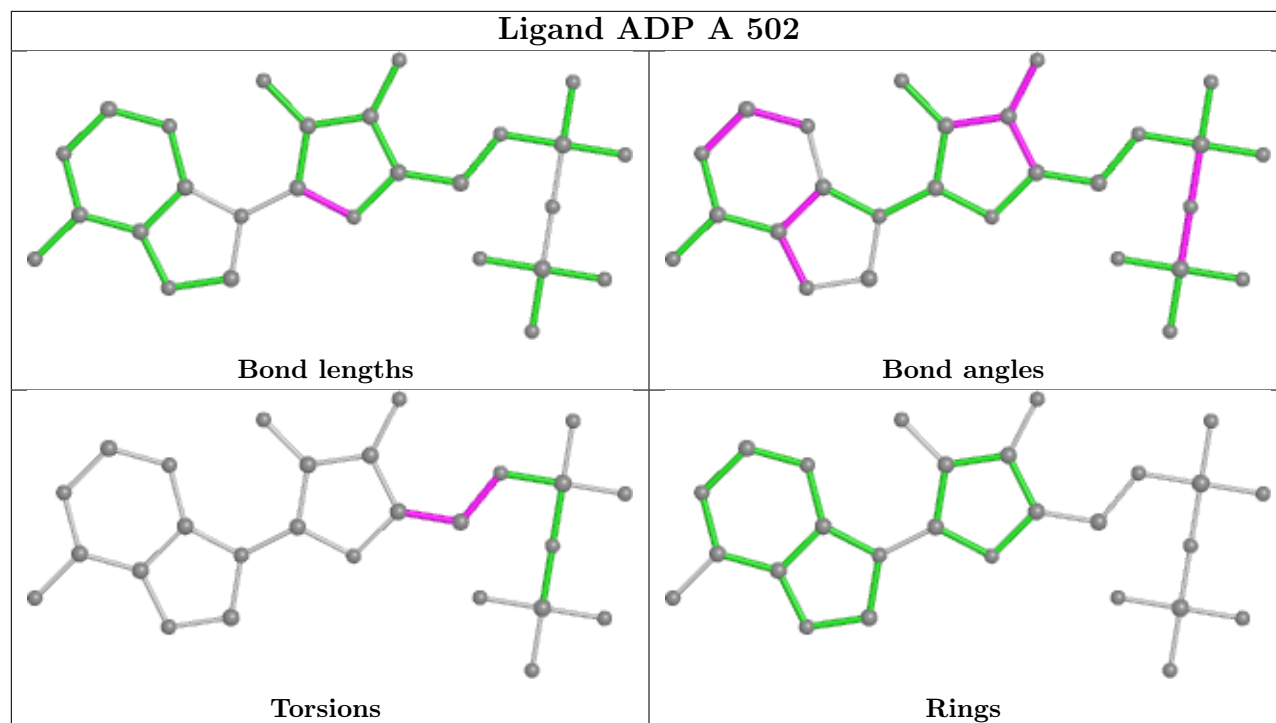
There are no ring outliers.

1 monomer is involved in 10 short contacts:

Mol	Chain	Res	Type	Clashes	Symm-Clashes
2	A	501	Y7Y	10	0

The following is a two-dimensional graphical depiction of Mogul quality analysis of bond lengths, bond angles, torsion angles, and ring geometry for all instances of the Ligand of Interest. In addition, ligands with molecular weight > 250 and outliers as shown on the validation Tables will also be included. For torsion angles, if less than 5% of the Mogul distribution of torsion angles is within 10 degrees of the torsion angle in question, then that torsion angle is considered an outlier. Any bond that is central to one or more torsion angles identified as an outlier by Mogul will be highlighted in the graph. For rings, the root-mean-square deviation (RMSD) between the ring in question and similar rings identified by Mogul is calculated over all ring torsion angles. If the average RMSD is greater than 60 degrees and the minimal RMSD between the ring in question and any Mogul-identified rings is also greater than 60 degrees, then that ring is considered an outlier. The outliers are highlighted in purple. The color gray indicates Mogul did not find sufficient equivalents in the CSD to analyse the geometry.





5.7 Other polymers [i](#)

There are no such residues in this entry.

5.8 Polymer linkage issues [i](#)

There are no chain breaks in this entry.

6 Fit of model and data

6.1 Protein, DNA and RNA chains

In the following table, the column labelled ‘#RSRZ> 2’ contains the number (and percentage) of RSRZ outliers, followed by percent RSRZ outliers for the chain as percentile scores relative to all X-ray entries and entries of similar resolution. The OWAB column contains the minimum, median, 95th percentile and maximum values of the occupancy-weighted average B-factor per residue. The column labelled ‘Q< 0.9’ lists the number of (and percentage) of residues with an average occupancy less than 0.9.

Mol	Chain	Analysed	<RSRZ>	#RSRZ>2	OWAB(Å ²)	Q<0.9
1	A	422/468 (90%)	0.37	33 (7%) 13 14	17, 39, 82, 121	0

All (33) RSRZ outliers are listed below:

Mol	Chain	Res	Type	RSRZ
1	A	184	MET	10.8
1	A	187	ALA	7.6
1	A	186	LYS	5.7
1	A	182	ILE	5.4
1	A	137	PRO	4.8
1	A	183	ALA	4.6
1	A	170	ARG	4.5
1	A	150	LYS	4.4
1	A	158	ILE	4.1
1	A	445	GLY	4.0
1	A	446	MET	3.9
1	A	174	SER	3.8
1	A	199	TYR	3.6
1	A	136	GLY	3.3
1	A	251	GLU	3.3
1	A	179	GLU	3.2
1	A	154	TYR	3.2
1	A	181	SER	3.2
1	A	185	THR	3.2
1	A	143	ALA	3.0
1	A	389	ILE	3.0
1	A	13	ILE	2.8
1	A	153	GLY	2.7
1	A	148	ILE	2.5
1	A	157	ILE	2.3
1	A	147	GLU	2.2
1	A	188	GLU	2.1

Continued on next page...

Continued from previous page...

Mol	Chain	Res	Type	RSRZ
1	A	362	GLY	2.1
1	A	345	LYS	2.1
1	A	365	VAL	2.1
1	A	178	LEU	2.1
1	A	356	HIS	2.1
1	A	180	GLU	2.0

6.2 Non-standard residues in protein, DNA, RNA chains [i](#)

There are no non-standard protein/DNA/RNA residues in this entry.

6.3 Carbohydrates [i](#)

There are no monosaccharides in this entry.

6.4 Ligands [i](#)

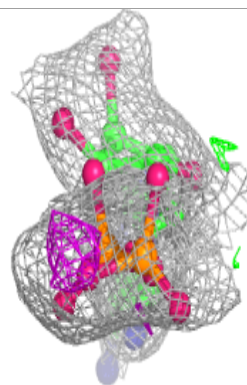
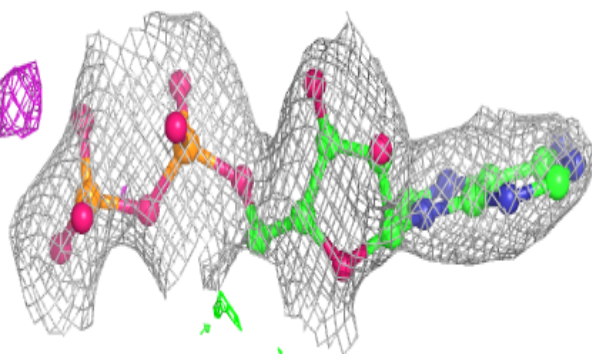
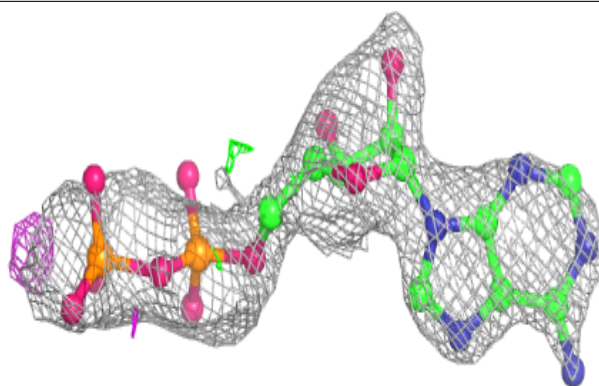
In the following table, the Atoms column lists the number of modelled atoms in the group and the number defined in the chemical component dictionary. The B-factors column lists the minimum, median, 95th percentile and maximum values of B factors of atoms in the group. The column labelled 'Q< 0.9' lists the number of atoms with occupancy less than 0.9.

Mol	Type	Chain	Res	Atoms	RSCC	RSR	B-factors(Å ²)	Q<0.9
3	ADP	A	502	27/27	0.77	0.18	66,76,115,127	0
2	Y7Y	A	501	21/21	0.78	0.26	25,50,62,81	0

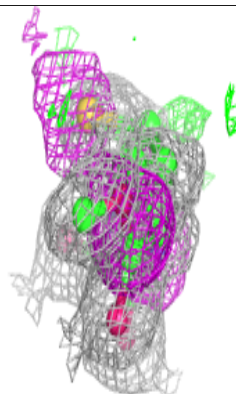
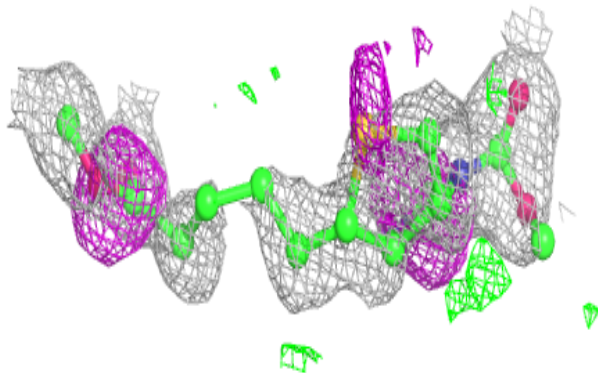
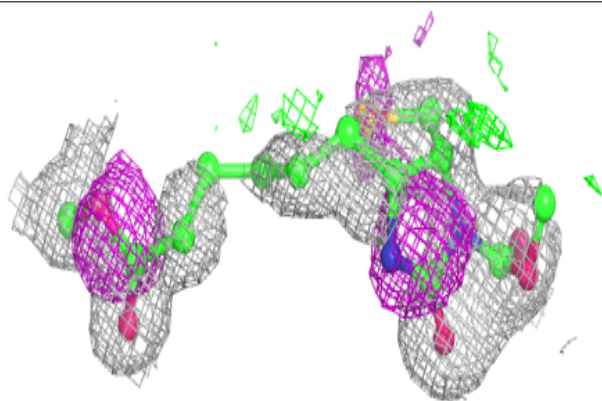
The following is a graphical depiction of the model fit to experimental electron density of all instances of the Ligand of Interest. In addition, ligands with molecular weight > 250 and outliers as shown on the geometry validation Tables will also be included. Each fit is shown from different orientation to approximate a three-dimensional view.

Electron density around ADP A 502:

$2mF_o-DF_c$ (at 0.7 rmsd) in gray
 mF_o-DF_c (at 3 rmsd) in purple (negative)
and green (positive)

**Electron density around Y7Y A 501:**

$2mF_o-DF_c$ (at 0.7 rmsd) in gray
 mF_o-DF_c (at 3 rmsd) in purple (negative)
and green (positive)



6.5 Other polymers [i](#)

There are no such residues in this entry.