



Full wwPDB X-ray Structure Validation Report ⓘ

Feb 28, 2022 – 10:34 AM EST

PDB ID : 5SB9
Title : Tubulin-maytansinoid-4a-complex
Authors : Marzullo, P.; Boiarska, Z.; Perez-Pena, H.; Abel, A.-C.; Alvarez-Bernad, B.; Lucena-Agell, D.; Vasile, F.; Sironi, M.; Steinmetz, M.O.; Prota, A.E.; Diaz, J.F.; Pieraccini, S.; Passarella, D.
Deposited on : 2021-07-20
Resolution : 2.50 Å(reported)

This is a Full wwPDB X-ray Structure Validation Report for a publicly released PDB entry.

We welcome your comments at validation@mail.wwpdb.org

A user guide is available at

<https://www.wwpdb.org/validation/2017/XrayValidationReportHelp>

with specific help available everywhere you see the ⓘ symbol.

The following versions of software and data (see [references ⓘ](#)) were used in the production of this report:

MolProbity : 4.02b-467
Mogul : 1.8.5 (274361), CSD as541be (2020)
Xtriage (Phenix) : 1.13
EDS : 2.27
buster-report : 1.1.7 (2018)
Percentile statistics : 20191225.v01 (using entries in the PDB archive December 25th 2019)
Refmac : 5.8.0158
CCP4 : 7.0.044 (Gargrove)
Ideal geometry (proteins) : Engh & Huber (2001)
Ideal geometry (DNA, RNA) : Parkinson et al. (1996)
Validation Pipeline (wwPDB-VP) : 2.27

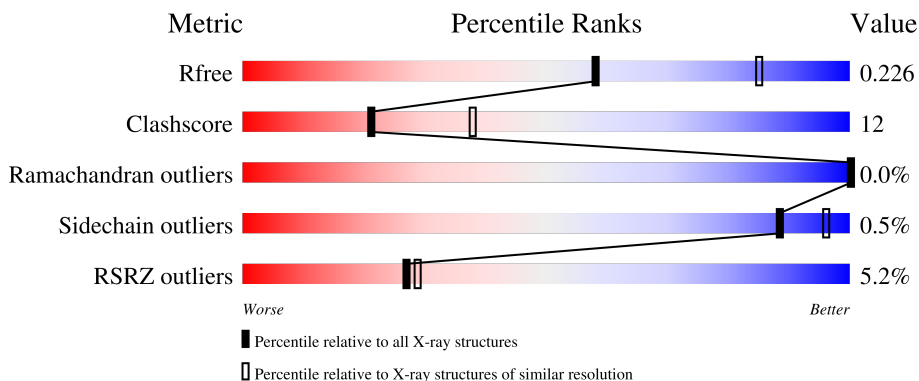
1 Overall quality at a glance i

The following experimental techniques were used to determine the structure:

X-RAY DIFFRACTION

The reported resolution of this entry is 2.50 Å.

Percentile scores (ranging between 0-100) for global validation metrics of the entry are shown in the following graphic. The table shows the number of entries on which the scores are based.



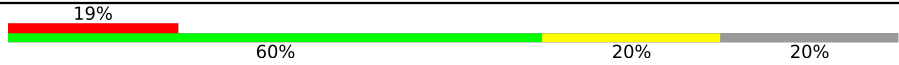
Metric	Whole archive (#Entries)	Similar resolution (#Entries, resolution range(Å))
R_{free}	130704	4661 (2.50-2.50)
Clashscore	141614	5346 (2.50-2.50)
Ramachandran outliers	138981	5231 (2.50-2.50)
Sidechain outliers	138945	5233 (2.50-2.50)
RSRZ outliers	127900	4559 (2.50-2.50)

The table below summarises the geometric issues observed across the polymeric chains and their fit to the electron density. The red, orange, yellow and green segments of the lower bar indicate the fraction of residues that contain outliers for ≥ 3 , 2, 1 and 0 types of geometric quality criteria respectively. A grey segment represents the fraction of residues that are not modelled. The numeric value for each fraction is indicated below the corresponding segment, with a dot representing fractions $\leq 5\%$. The upper red bar (where present) indicates the fraction of residues that have poor fit to the electron density. The numeric value is given above the bar.

Mol	Chain	Length	Quality of chain
1	A	451	<div style="display: flex; align-items: center;"> <div style="width: 2%; height: 10px; background-color: red; margin-right: 2px;"></div> <div style="width: 71%; height: 10px; background-color: green; margin-right: 2px;"></div> <div style="width: 25%; height: 10px; background-color: yellow; margin-right: 2px;"></div> <div style="width: 2%; height: 10px; background-color: grey; margin-right: 2px;"></div> </div> <p style="text-align: center;">2% 71% 25% .</p>
1	C	451	<div style="display: flex; align-items: center;"> <div style="width: 76%; height: 10px; background-color: green; margin-right: 2px;"></div> <div style="width: 21%; height: 10px; background-color: yellow; margin-right: 2px;"></div> <div style="width: 3%; height: 10px; background-color: grey; margin-right: 2px;"></div> </div> <p style="text-align: center;">76% 21% .</p>
2	B	445	<div style="display: flex; align-items: center;"> <div style="width: 2%; height: 10px; background-color: red; margin-right: 2px;"></div> <div style="width: 68%; height: 10px; background-color: green; margin-right: 2px;"></div> <div style="width: 27%; height: 10px; background-color: yellow; margin-right: 2px;"></div> <div style="width: 5%; height: 10px; background-color: grey; margin-right: 2px;"></div> </div> <p style="text-align: center;">2% 68% 27% 5%</p>
2	D	445	<div style="display: flex; align-items: center;"> <div style="width: 3%; height: 10px; background-color: red; margin-right: 2px;"></div> <div style="width: 64%; height: 10px; background-color: green; margin-right: 2px;"></div> <div style="width: 30%; height: 10px; background-color: yellow; margin-right: 2px;"></div> <div style="width: 5%; height: 10px; background-color: grey; margin-right: 2px;"></div> </div> <p style="text-align: center;">3% 64% 30% 5%</p>
3	E	143	<div style="display: flex; align-items: center;"> <div style="width: 6%; height: 10px; background-color: red; margin-right: 2px;"></div> <div style="width: 73%; height: 10px; background-color: green; margin-right: 2px;"></div> <div style="width: 13%; height: 10px; background-color: yellow; margin-right: 2px;"></div> <div style="width: 14%; height: 10px; background-color: grey; margin-right: 2px;"></div> </div> <p style="text-align: center;">6% 73% 13% 14%</p>

Continued on next page...

Continued from previous page...

Mol	Chain	Length	Quality of chain
4	F	384	

The following table lists non-polymeric compounds, carbohydrate monomers and non-standard residues in protein, DNA, RNA chains that are outliers for geometric or electron-density-fit criteria:

Mol	Type	Chain	Res	Chirality	Geometry	Clashes	Electron density
12	ACP	F	501	-	-	-	X

2 Entry composition i

There are 13 unique types of molecules in this entry. The entry contains 17730 atoms, of which 5 are hydrogens and 0 are deuteriums.

In the tables below, the ZeroOcc column contains the number of atoms modelled with zero occupancy, the AltConf column contains the number of residues with at least one atom in alternate conformation and the Trace column contains the number of residues modelled with at most 2 atoms.

- Molecule 1 is a protein called Tubulin alpha-1B chain.

Mol	Chain	Residues	Atoms					ZeroOcc	AltConf	Trace
			Total	C	N	O	S			
1	A	437	Total	C	N	O	S	0	6	0
			3452	2185	586	657	24			
1	C	440	Total	C	N	O	S	0	8	0
			3478	2202	587	666	23			

- Molecule 2 is a protein called Tubulin beta-2B chain.

Mol	Chain	Residues	Atoms					ZeroOcc	AltConf	Trace
			Total	C	N	O	S			
2	B	424	Total	C	N	O	S	0	8	0
			3395	2132	583	653	27			
2	D	421	Total	C	N	O	S	0	1	0
			3312	2082	562	641	27			

- Molecule 3 is a protein called Stathmin-4.

Mol	Chain	Residues	Atoms					ZeroOcc	AltConf	Trace
			Total	C	N	O	S			
3	E	123	Total	C	N	O	S	0	4	0
			1051	649	193	204	5			

There are 2 discrepancies between the modelled and reference sequences:

Chain	Residue	Modelled	Actual	Comment	Reference
E	3	MET	-	initiating methionine	UNP P63043
E	4	ALA	-	expression tag	UNP P63043

- Molecule 4 is a protein called Tubulin-Tyrosine Ligase.

Mol	Chain	Residues	Atoms					ZeroOcc	AltConf	Trace
			Total	C	N	O	S			
4	F	308	Total	C	N	O	S	0	2	0
			2533	1636	429	454	14			

There are 6 discrepancies between the modelled and reference sequences:

Chain	Residue	Modelled	Actual	Comment	Reference
F	379	HIS	-	expression tag	UNP E1BQ43
F	380	HIS	-	expression tag	UNP E1BQ43
F	381	HIS	-	expression tag	UNP E1BQ43
F	382	HIS	-	expression tag	UNP E1BQ43
F	383	HIS	-	expression tag	UNP E1BQ43
F	384	HIS	-	expression tag	UNP E1BQ43

- Molecule 5 is GUANOSINE-5'-TRIPHOSPHATE (three-letter code: GTP) (formula: $C_{10}H_{16}N_5O_{14}P_3$).



Mol	Chain	Residues	Atoms					ZeroOcc	AltConf
			Total	C	N	O	P		
5	A	1	Total	C	N	O	P	0	0
			32	10	5	14	3		
5	C	1	Total	C	N	O	P	0	0
			32	10	5	14	3		

- Molecule 6 is MAGNESIUM ION (three-letter code: MG) (formula: Mg).

Mol	Chain	Residues	Atoms		ZeroOcc	AltConf
6	A	1	Total	Mg	0	0
			1	1		
6	B	1	Total	Mg	0	0
			1	1		
6	C	1	Total	Mg	0	0
			1	1		
6	D	1	Total	Mg	0	0
			1	1		

Continued on next page...

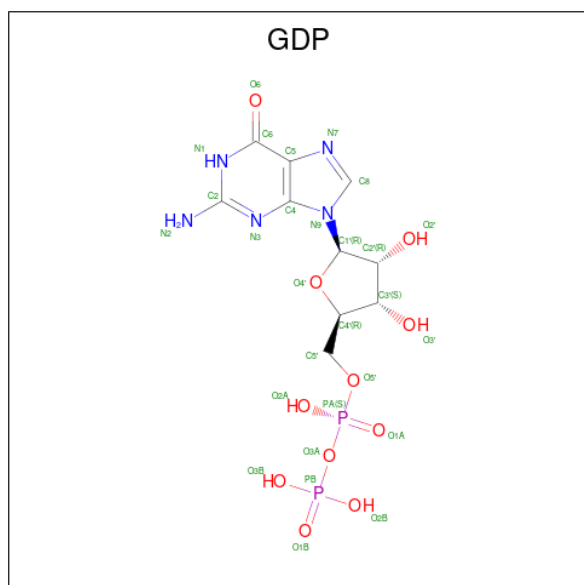
Continued from previous page...

Mol	Chain	Residues	Atoms	ZeroOcc	AltConf
6	F	1	Total Mg 1 1	0	0

- Molecule 7 is CALCIUM ION (three-letter code: CA) (formula: Ca).

Mol	Chain	Residues	Atoms	ZeroOcc	AltConf
7	A	2	Total Ca 2 2	0	0
7	C	1	Total Ca 1 1	0	0

- Molecule 8 is GUANOSINE-5'-DIPHOSPHATE (three-letter code: GDP) (formula: C₁₀H₁₅N₅O₁₁P₂).



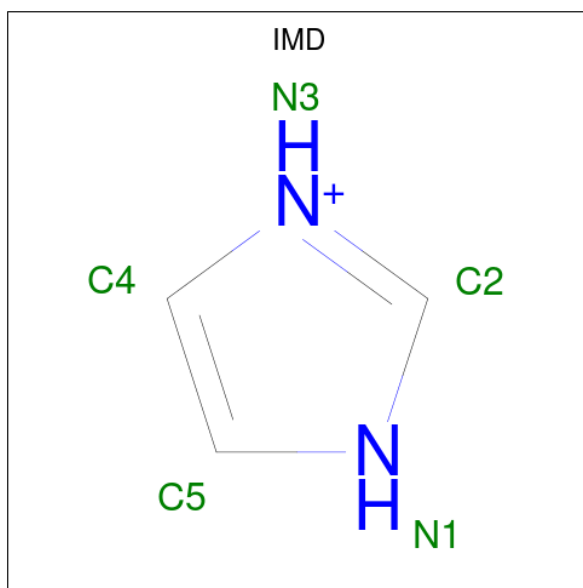
Mol	Chain	Residues	Atoms	ZeroOcc	AltConf
8	B	1	Total C N O P 28 10 5 11 2	0	0
8	D	1	Total C N O P 28 10 5 11 2	0	0

- Molecule 9 is 2-(N-MORPHOLINO)-ETHANESULFONIC ACID (three-letter code: MES) (formula: C₆H₁₃NO₄S).



Mol	Chain	Residues	Atoms					ZeroOcc	AltConf
			Total	C	N	O	S		
9	B	1	12	6	1	4	1	0	0

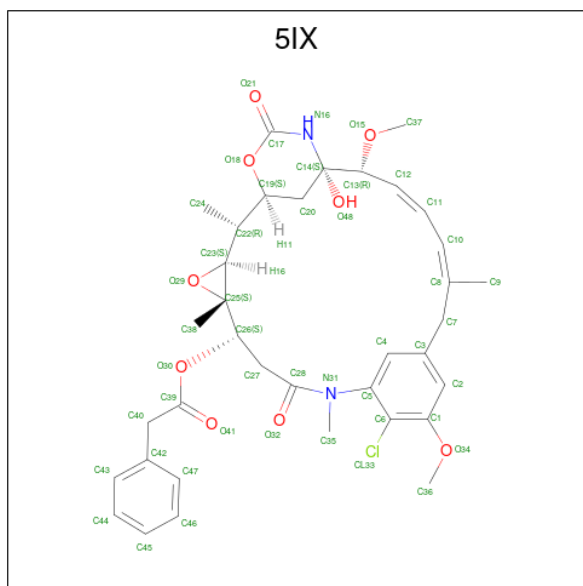
- Molecule 10 is IMIDAZOLE (three-letter code: IMD) (formula: $C_3H_5N_2$).



Mol	Chain	Residues	Atoms				ZeroOcc	AltConf
			Total	C	H	N		
10	C	1	10	3	5	2	0	0

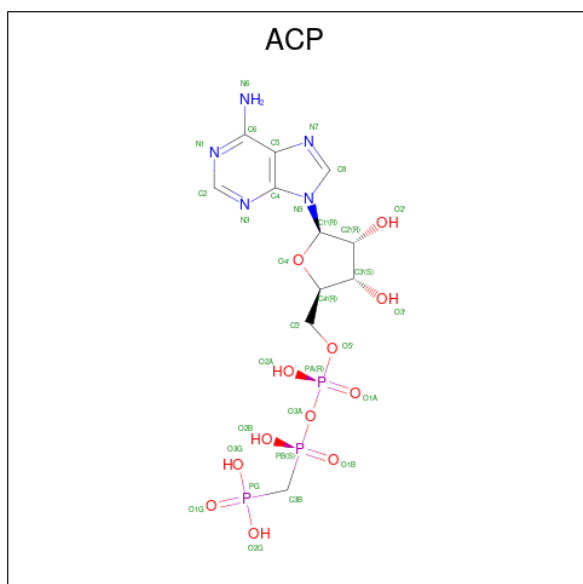
- Molecule 11 is (1S,2R,3S,5S,6S,16E,18E,20R,21S)-11-chloro-21-hydroxy-12,20-dimethoxy-2,5,9,16-tetramethyl-8,23-dioxo-4,24-dioxa-9,22-diazatetracyclo[19.3.1.1 10,14 .0 3,5] hexacos-10(26),11,13,16,18-pentaen-6-yl phenylacetate (three-letter code: 5IX) (formula:

C₃₆H₄₃ClN₂O₉) (labeled as "Ligand of Interest" by depositor).



Mol	Chain	Residues	Atoms				ZeroOcc	AltConf	
			Total	C	Cl	N			O
11	D	1	48	36	1	2	9	0	0

- Molecule 12 is PHOSPHOMETHYLPHOSPHONIC ACID ADENYLATE ESTER (three-letter code: ACP) (formula: C₁₁H₁₈N₅O₁₂P₃).



Mol	Chain	Residues	Atoms				ZeroOcc	AltConf	
			Total	C	N	O			P
12	F	1	31	11	5	12	3	0	0

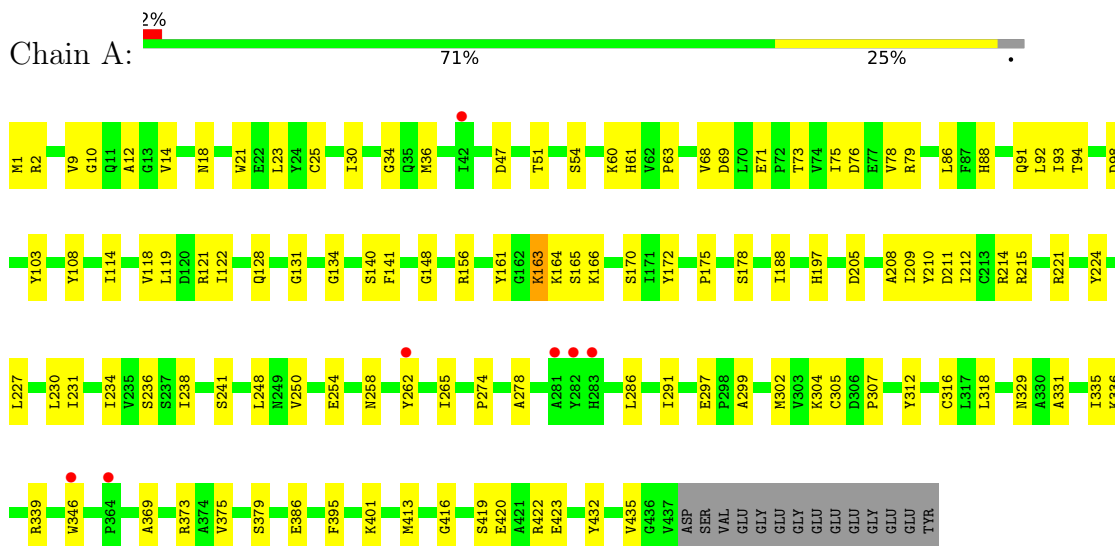
- Molecule 13 is water.

Mol	Chain	Residues	Atoms	ZeroOcc	AltConf
13	A	50	Total O 50 50	0	0
13	B	62	Total O 62 62	0	0
13	C	113	Total O 113 113	0	0
13	D	32	Total O 32 32	0	0
13	E	11	Total O 11 11	0	0
13	F	12	Total O 12 12	0	0

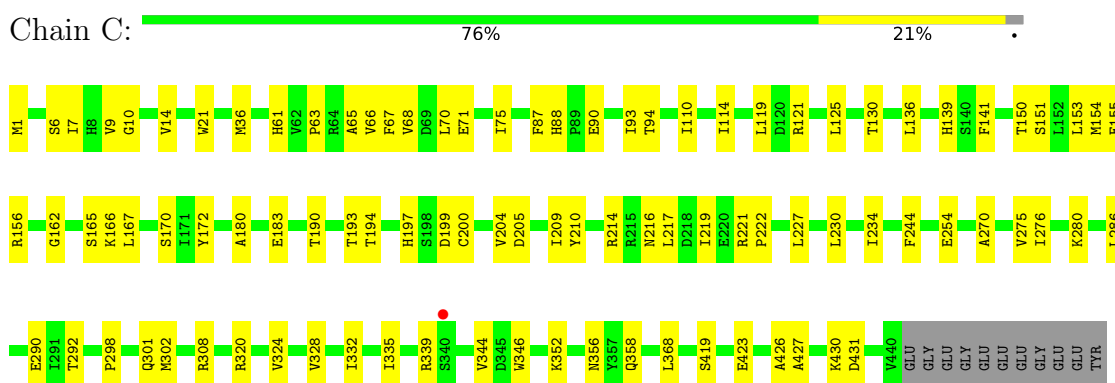
3 Residue-property plots

These plots are drawn for all protein, RNA, DNA and oligosaccharide chains in the entry. The first graphic for a chain summarises the proportions of the various outlier classes displayed in the second graphic. The second graphic shows the sequence view annotated by issues in geometry and electron density. Residues are color-coded according to the number of geometric quality criteria for which they contain at least one outlier: green = 0, yellow = 1, orange = 2 and red = 3 or more. A red dot above a residue indicates a poor fit to the electron density ($RSRZ > 2$). Stretches of 2 or more consecutive residues without any outlier are shown as a green connector. Residues present in the sample, but not in the model, are shown in grey.

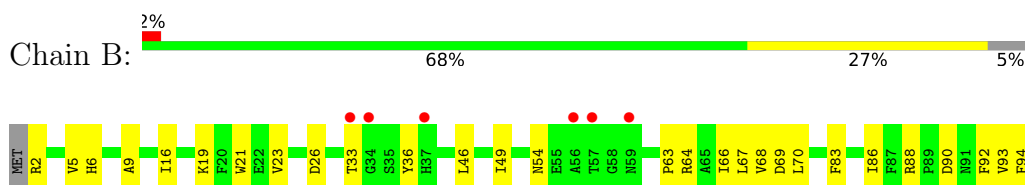
- Molecule 1: Tubulin alpha-1B chain

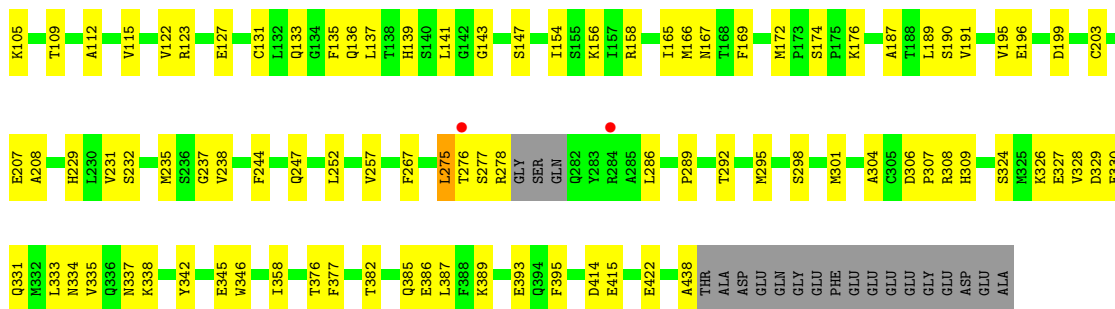


- Molecule 1: Tubulin alpha-1B chain

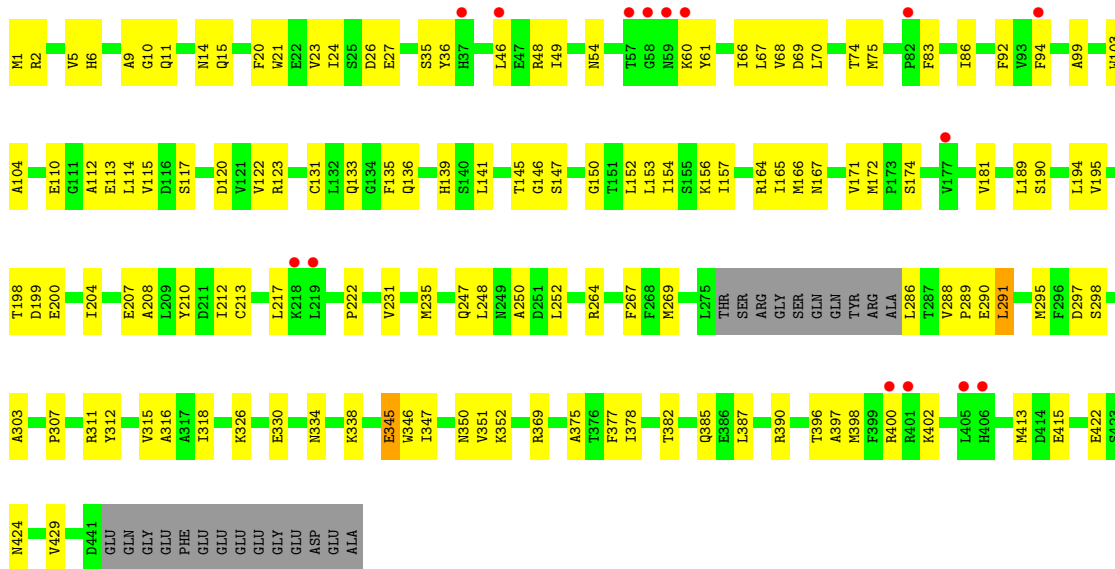


- Molecule 2: Tubulin beta-2B chain

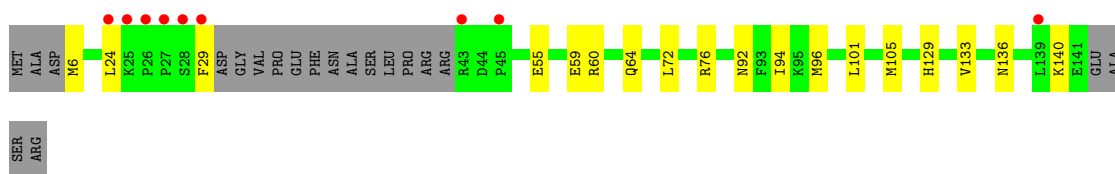
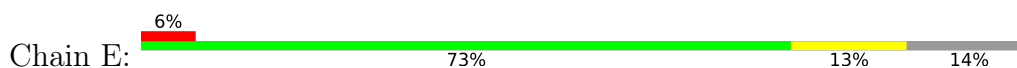




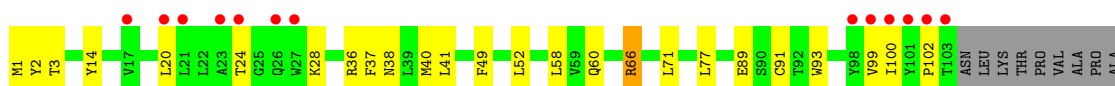
- Molecule 2: Tubulin beta-2B chain

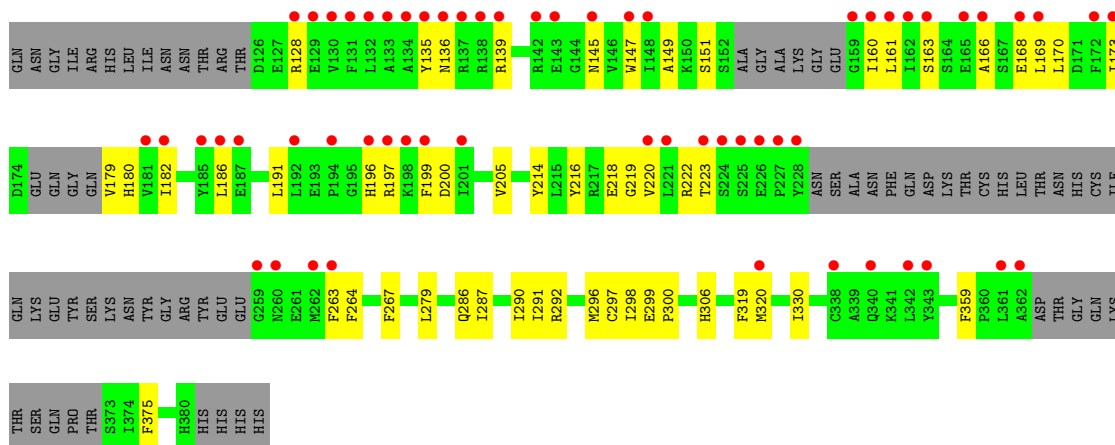


- Molecule 3: Stathmin-4



- Molecule 4: Tubulin-Tyrosine Ligase





4 Data and refinement statistics

Property	Value	Source
Space group	P 21 21 21	Depositor
Cell constants a, b, c, α , β , γ	104.54Å 156.72Å 181.70Å 90.00° 90.00° 90.00°	Depositor
Resolution (Å)	47.92 – 2.50 47.92 – 2.50	Depositor EDS
% Data completeness (in resolution range)	100.0 (47.92-2.50) 100.0 (47.92-2.50)	Depositor EDS
R_{merge}	0.21	Depositor
R_{sym}	(Not available)	Depositor
$\langle I/\sigma(I) \rangle$ ¹	1.68 (at 2.51Å)	Xtrriage
Refinement program	PHENIX 1.19.1_4122	Depositor
R, R_{free}	0.194 , 0.228 0.191 , 0.226	Depositor DCC
R_{free} test set	5185 reflections (5.00%)	wwPDB-VP
Wilson B-factor (Å ²)	52.3	Xtrriage
Anisotropy	0.241	Xtrriage
Bulk solvent k_{sol} (e/Å ³), B_{sol} (Å ²)	0.33 , 39.6	EDS
L-test for twinning ²	$\langle L \rangle = 0.50$, $\langle L^2 \rangle = 0.33$	Xtrriage
Estimated twinning fraction	No twinning to report.	Xtrriage
F_o, F_c correlation	0.95	EDS
Total number of atoms	17730	wwPDB-VP
Average B, all atoms (Å ²)	64.0	wwPDB-VP

Xtrriage's analysis on translational NCS is as follows: *The largest off-origin peak in the Patterson function is 2.68% of the height of the origin peak. No significant pseudotranslation is detected.*

¹Intensities estimated from amplitudes.

²Theoretical values of $\langle |L| \rangle$, $\langle L^2 \rangle$ for acentric reflections are 0.5, 0.333 respectively for untwinned datasets, and 0.375, 0.2 for perfectly twinned datasets.

5 Model quality [i](#)

5.1 Standard geometry [i](#)

Bond lengths and bond angles in the following residue types are not validated in this section: CA, IMD, ACP, MES, GDP, MG, 5IX, GTP

The Z score for a bond length (or angle) is the number of standard deviations the observed value is removed from the expected value. A bond length (or angle) with $|Z| > 5$ is considered an outlier worth inspection. RMSZ is the root-mean-square of all Z scores of the bond lengths (or angles).

Mol	Chain	Bond lengths		Bond angles	
		RMSZ	# Z >5	RMSZ	# Z >5
1	A	0.24	0/3539	0.45	0/4805
1	C	0.24	0/3574	0.46	0/4851
2	B	0.24	0/3487	0.46	0/4719
2	D	0.24	0/3388	0.44	0/4589
3	E	0.23	0/1067	0.41	0/1416
4	F	0.24	0/2592	0.46	0/3499
All	All	0.24	0/17647	0.45	0/23879

There are no bond length outliers.

There are no bond angle outliers.

There are no chirality outliers.

There are no planarity outliers.

5.2 Too-close contacts [i](#)

In the following table, the Non-H and H(model) columns list the number of non-hydrogen atoms and hydrogen atoms in the chain respectively. The H(added) column lists the number of hydrogen atoms added and optimized by MolProbity. The Clashes column lists the number of clashes within the asymmetric unit, whereas Symm-Clashes lists symmetry-related clashes.

Mol	Chain	Non-H	H(model)	H(added)	Clashes	Symm-Clashes
1	A	3452	0	3366	87	0
1	C	3478	0	3397	79	0
2	B	3395	0	3284	92	0
2	D	3312	0	3194	95	0
3	E	1051	0	1065	17	0
4	F	2533	0	2531	57	0
5	A	32	0	12	1	0

Continued on next page...

Continued from previous page...

Mol	Chain	Non-H	H(model)	H(added)	Clashes	Symm-Clashes
5	C	32	0	12	0	0
6	A	1	0	0	0	0
6	B	1	0	0	0	0
6	C	1	0	0	0	0
6	D	1	0	0	0	0
6	F	1	0	0	0	0
7	A	2	0	0	0	0
7	C	1	0	0	0	0
8	B	28	0	12	0	0
8	D	28	0	12	1	0
9	B	12	0	12	1	0
10	C	5	5	5	1	0
11	D	48	0	0	1	0
12	F	31	0	14	1	0
13	A	50	0	0	0	0
13	B	62	0	0	3	0
13	C	113	0	0	2	0
13	D	32	0	0	3	0
13	E	11	0	0	0	0
13	F	12	0	0	0	0
All	All	17725	5	16916	414	0

The all-atom clashscore is defined as the number of clashes found per 1000 atoms (including hydrogen atoms). The all-atom clashscore for this structure is 12.

All (414) close contacts within the same asymmetric unit are listed below, sorted by their clash magnitude.

Atom-1	Atom-2	Interatomic distance (Å)	Clash overlap (Å)
2:D:11:GLN:HA	2:D:74:THR:HG21	1.54	0.89
2:B:176:LYS:HD2	2:B:207:GLU:HG3	1.57	0.87
1:C:254:GLU:HG2	1:C:352:LYS:HE2	1.65	0.78
2:B:23:VAL:HG21	2:B:232:SER:HB3	1.64	0.78
2:D:298:SER:HB3	2:D:307:PRO:HD2	1.64	0.78
1:A:336:LYS:HG3	3:E:24:LEU:HD13	1.66	0.77
2:D:2:ARG:NH2	13:D:601:HOH:O	2.18	0.76
1:C:335:ILE:HG23	1:C:339:ARG:HG3	1.68	0.75
4:F:199:PHE:HB3	4:F:223:THR:HG22	1.71	0.73
2:D:164:ARG:NH1	13:D:602:HOH:O	2.22	0.72
1:C:93:ILE:HD11	1:C:121:ARG:HG3	1.71	0.71
2:D:83:PHE:O	2:D:86:ILE:HG22	1.91	0.70
2:B:83:PHE:O	2:B:86:ILE:HG22	1.91	0.70

Continued on next page...

Continued from previous page...

Atom-1	Atom-2	Interatomic distance (Å)	Clash overlap (Å)
4:F:320:MET:HG3	4:F:330:ILE:HD11	1.74	0.70
1:A:211:ASP:OD2	1:A:304:LYS:NZ	2.20	0.70
1:C:172:TYR:HB3	1:C:205:ASP:HA	1.74	0.69
2:B:172:MET:HG3	2:B:387:LEU:HD11	1.74	0.69
1:A:79:ARG:HG2	1:A:92:LEU:HD12	1.75	0.69
2:D:136:GLN:HA	2:D:167:ASN:O	1.92	0.69
1:A:166:LYS:HE2	1:A:197:HIS:O	1.93	0.68
4:F:169:LEU:HD13	4:F:182:ILE:HD13	1.74	0.67
2:D:264:ARG:NH2	2:D:424:ASN:OD1	2.27	0.67
4:F:102:PRO:HB3	4:F:173:ILE:HG22	1.75	0.67
1:A:75:ILE:HD12	1:A:94:THR:HG22	1.75	0.67
2:D:75:MET:SD	2:D:94:PHE:HB3	2.35	0.67
4:F:151:SER:HB3	4:F:180:HIS:HA	1.77	0.66
1:C:204:VAL:HG22	1:C:302[B]:MET:SD	2.35	0.66
2:D:347:ILE:HG22	2:D:350:ASN:HB3	1.76	0.66
4:F:136:ASN:HA	4:F:139:ARG:HB3	1.78	0.65
1:A:172:TYR:HB3	1:A:205:ASP:HA	1.79	0.65
2:D:397:ALA:HA	2:D:400:ARG:NH1	2.12	0.65
2:B:136:GLN:HA	2:B:167:ASN:O	1.96	0.64
4:F:20:LEU:O	4:F:24:THR:HG23	1.97	0.64
2:B:2:ARG:HA	2:B:131:CYS:O	1.98	0.63
1:C:1:MET:HG2	1:C:130:THR:OG1	1.98	0.63
1:A:274:PRO:HB3	1:A:286:LEU:HD12	1.81	0.63
2:B:334:ASN:O	2:B:338:LYS:HB2	1.99	0.63
4:F:169:LEU:HD12	4:F:170:LEU:N	2.13	0.62
1:C:209:ILE:HD11	1:C:302[A]:MET:CE	2.29	0.62
1:C:210:TYR:OH	1:C:221:ARG:HD2	2.00	0.62
1:C:254:GLU:HG2	1:C:352:LYS:CE	2.29	0.62
1:A:76:ASP:OD1	1:A:79:ARG:NH1	2.33	0.62
2:D:291:LEU:HD22	2:D:375:ALA:CB	2.30	0.61
1:C:292:THR:HG22	1:C:335:ILE:CD1	2.31	0.61
1:C:166:LYS:HE2	1:C:197:HIS:O	2.00	0.61
3:E:55:GLU:O	3:E:59:GLU:HG2	2.00	0.61
1:A:119:LEU:HD11	1:A:156:ARG:HB3	1.82	0.61
2:B:67:LEU:HD22	2:B:92:PHE:CE2	2.36	0.61
2:D:120:ASP:HA	2:D:123:ARG:NH1	2.16	0.61
2:D:311:ARG:NH2	2:D:345:GLU:OE2	2.27	0.60
1:C:298:PRO:HG2	1:C:308:ARG:NH2	2.16	0.60
1:A:21:TRP:CZ3	1:A:63:PRO:HB3	2.37	0.60
2:B:414[B]:ASP:OD1	13:B:601:HOH:O	2.16	0.60
1:C:292:THR:HG22	1:C:335:ILE:HD12	1.83	0.60

Continued on next page...

Continued from previous page...

Atom-1	Atom-2	Interatomic distance (Å)	Clash overlap (Å)
1:A:335:ILE:HG23	1:A:339:ARG:HD2	1.85	0.59
2:B:16:ILE:HD13	2:B:231:VAL:HG11	1.85	0.59
1:C:93:ILE:HG22	1:C:114:ILE:HD11	1.84	0.59
3:E:136:ASN:HD21	3:E:140:LYS:HE3	1.67	0.59
1:A:9:VAL:HG22	1:A:68[B]:VAL:CG1	2.32	0.59
1:C:431:ASP:HB3	10:C:504:IMD:H2	1.85	0.59
1:A:36:MET:HB3	1:A:61:HIS:CE1	2.38	0.59
3:E:92[A]:ASN:O	3:E:96:MET:HG2	2.01	0.59
2:B:292:THR:HG22	2:B:335:VAL:HG21	1.84	0.59
4:F:102:PRO:HD3	4:F:179:VAL:HA	1.84	0.58
2:D:141:LEU:HA	2:D:147:SER:HB3	1.84	0.58
2:B:203:CYS:SG	2:B:267:PHE:HB3	2.43	0.58
2:D:286:LEU:HD12	2:D:290:GLU:OE1	2.03	0.58
1:A:88:HIS:CE1	1:A:91:GLN:HG3	2.38	0.58
2:D:11:GLN:O	2:D:15:GLN:HG2	2.03	0.58
2:D:167:ASN:HD22	2:D:200:GLU:HB2	1.69	0.58
2:B:345:GLU:OE1	2:B:345:GLU:N	2.30	0.57
4:F:1:MET:CE	4:F:28:LYS:HB2	2.34	0.57
2:D:195:VAL:HG12	2:D:267:PHE:CE2	2.39	0.57
2:D:152:LEU:O	2:D:156:LYS:HG2	2.04	0.57
4:F:205:VAL:HG21	4:F:291:ILE:HD13	1.87	0.57
2:D:1:MET:O	2:D:131:CYS:HB3	2.05	0.57
4:F:199:PHE:CB	4:F:223:THR:HG22	2.35	0.57
1:C:165:SER:HA	1:C:199:ASP:OD2	2.05	0.56
1:C:275:VAL:HG13	1:C:368:LEU:HD21	1.85	0.56
2:D:145:THR:N	8:D:501:GDP:O3B	2.31	0.56
2:D:147:SER:HB2	2:D:190:SER:OG	2.04	0.56
2:B:69:ASP:O	2:B:94:PHE:HA	2.06	0.56
4:F:200:ASP:OD1	4:F:222:ARG:HB2	2.05	0.56
2:D:110:GLU:O	2:D:113:GLU:HG2	2.06	0.56
4:F:100:ILE:HD12	4:F:128:ARG:HA	1.88	0.56
1:A:69:ASP:O	1:A:94:THR:HA	2.05	0.55
1:C:21:TRP:CZ3	1:C:63:PRO:HB3	2.41	0.55
2:D:2:ARG:HB3	2:D:133:GLN:CG	2.36	0.55
2:D:70:LEU:HD12	2:D:99:ALA:HB2	1.89	0.55
1:C:75:ILE:HD12	1:C:94:THR:HG22	1.88	0.55
3:E:92[B]:ASN:O	3:E:96:MET:HG2	2.05	0.55
2:B:63:PRO:HD3	2:B:86:ILE:HG12	1.89	0.55
3:E:92[A]:ASN:OD1	3:E:96:MET:HE2	2.07	0.55
1:A:278:ALA:HA	1:A:369:ALA:HB2	1.89	0.55
1:C:320:ARG:HA	1:C:356[A]:ASN:O	2.06	0.55

Continued on next page...

Continued from previous page...

Atom-1	Atom-2	Interatomic distance (Å)	Clash overlap (Å)
3:E:101:LEU:O	3:E:105:MET:HG2	2.06	0.55
2:B:6:HIS:CD2	2:B:21:TRP:HE1	2.24	0.55
2:B:231:VAL:O	2:B:235:MET:HG3	2.07	0.55
1:A:419:SER:O	1:A:423[A]:GLU:HG3	2.07	0.55
1:C:7:ILE:HG21	1:C:153:LEU:HD21	1.89	0.55
2:D:6:HIS:HD1	2:D:136:GLN:HE21	1.54	0.55
2:B:191:VAL:O	2:B:195:VAL:HG23	2.07	0.55
2:B:275:LEU:O	2:B:277:SER:N	2.40	0.54
2:B:88:ARG:NH1	2:B:90:ASP:HB2	2.23	0.54
1:A:262:TYR:HE2	1:A:346:TRP:HZ2	1.55	0.54
2:D:154:ILE:HG23	2:D:166:MET:HG2	1.89	0.54
2:B:199:ASP:OD1	9:B:503:MES:H62	2.06	0.54
4:F:219:GLY:HA3	4:F:264:PHE:CZ	2.42	0.54
2:D:5:VAL:HB	2:D:135:PHE:CD2	2.42	0.54
2:B:308:ARG:HA	2:B:342:TYR:CE1	2.43	0.54
3:E:129:HIS:O	3:E:133:VAL:HG23	2.07	0.54
2:D:174:SER:OG	2:D:207:GLU:HB2	2.08	0.54
1:C:209:ILE:HG22	1:C:227:LEU:HD22	1.89	0.53
1:C:88:HIS:HB3	1:C:90[B]:GLU:OE1	2.08	0.53
2:D:269:MET:HG3	2:D:303:ALA:HB3	1.90	0.53
4:F:205:VAL:CG2	4:F:291:ILE:HD13	2.37	0.53
2:D:295:MET:CG	2:D:377:PHE:HB2	2.38	0.53
4:F:191:LEU:HA	4:F:197:ARG:O	2.08	0.53
1:A:250:VAL:HG12	1:A:254:GLU:OE1	2.08	0.53
2:B:36:TYR:CD1	2:B:46:LEU:HD21	2.43	0.53
1:C:320:ARG:HA	1:C:356[B]:ASN:O	2.07	0.53
1:C:209:ILE:HD11	1:C:302[A]:MET:HE3	1.88	0.53
1:C:286:LEU:HA	1:C:290:GLU:OE1	2.07	0.53
2:D:385:GLN:HB2	2:D:429:VAL:HG13	1.90	0.53
1:A:18[A]:ASN:ND2	1:A:78:VAL:HG22	2.24	0.53
2:B:2:ARG:HB3	2:B:133:GLN:CG	2.39	0.53
2:B:382:THR:O	2:B:385:GLN:HG2	2.09	0.53
2:D:396:THR:HG22	2:D:422:GLU:OE2	2.09	0.53
2:D:291:LEU:HD22	2:D:375:ALA:HB2	1.91	0.53
4:F:99:VAL:O	4:F:100:ILE:HD13	2.08	0.53
1:A:297:GLU:OE2	4:F:306:HIS:ND1	2.37	0.52
2:B:21:TRP:CZ3	2:B:63:PRO:HB3	2.44	0.52
2:D:334:ASN:OD1	2:D:338:LYS:HE3	2.09	0.52
1:A:215:ARG:NH2	1:A:299:ALA:HB1	2.23	0.52
1:C:155:GLU:OE1	3:E:101:LEU:HD13	2.09	0.52
1:A:134:GLY:HA2	1:A:164:LYS:HB3	1.90	0.52

Continued on next page...

Continued from previous page...

Atom-1	Atom-2	Interatomic distance (Å)	Clash overlap (Å)
2:B:329:ASP:O	2:B:333:LEU:HG	2.10	0.52
2:D:172:MET:HG3	2:D:387:LEU:HD21	1.90	0.52
1:A:2:ARG:HB3	1:A:131:GLY:O	2.10	0.52
2:B:196[B]:GLU:OE1	13:B:602:HOH:O	2.18	0.52
2:D:326:LYS:O	2:D:330:GLU:HG3	2.10	0.51
2:B:165:ILE:HG21	2:B:252:LEU:HB3	1.92	0.51
2:D:54:ASN:O	2:D:61:TYR:HA	2.11	0.51
2:D:248:LEU:HD21	2:D:352:LYS:HB3	1.91	0.51
2:D:291:LEU:HD22	2:D:375:ALA:HB3	1.93	0.51
1:A:336:LYS:CG	3:E:24:LEU:HD13	2.38	0.51
2:B:70:LEU:HD12	2:B:99:ALA:HB2	1.93	0.51
1:A:254:GLU:HG2	1:A:258:ASN:ND2	2.26	0.51
4:F:160:ILE:HD12	4:F:160:ILE:N	2.26	0.51
2:B:103:TRP:CE3	2:B:189:LEU:HD13	2.45	0.51
1:A:329:ASN:HB3	3:E:6:MET:CE	2.41	0.50
2:D:69:ASP:O	2:D:94:PHE:HA	2.10	0.50
2:D:171:VAL:HA	2:D:204:ILE:O	2.11	0.50
2:B:137:LEU:HD23	2:B:154:ILE:HD11	1.94	0.50
2:D:213:CYS:HA	2:D:217:LEU:HB2	1.94	0.50
4:F:145:ASN:OD1	4:F:147:TRP:NE1	2.33	0.50
1:C:190:THR:O	1:C:194:THR:HG23	2.11	0.50
2:D:146:GLY:O	2:D:150:GLY:HA3	2.11	0.50
2:B:2:ARG:HB3	2:B:133:GLN:NE2	2.26	0.50
1:A:134:GLY:HA3	1:A:165:SER:O	2.12	0.50
1:C:244:PHE:CE1	1:C:358:GLN:HG2	2.47	0.50
2:D:208:ALA:O	2:D:212:ILE:HG13	2.11	0.50
2:D:297:ASP:HA	13:D:626:HOH:O	2.12	0.50
1:A:161:TYR:HB3	1:A:164:LYS:HG2	1.94	0.50
1:A:161:TYR:HA	1:A:163:LYS:NZ	2.27	0.49
1:A:210:TYR:CE2	1:A:214:ARG:HD2	2.46	0.49
1:C:36:MET:HB3	1:C:61:HIS:CE1	2.47	0.49
2:D:165:ILE:HG21	2:D:252:LEU:HB3	1.94	0.49
4:F:149:ALA:O	4:F:160:ILE:HG23	2.11	0.49
1:C:151[A]:SER:HB3	1:C:193:THR:HG21	1.94	0.49
2:B:5:VAL:HB	2:B:135:PHE:CD2	2.48	0.49
2:D:103:TRP:CE3	2:D:189:LEU:HD13	2.47	0.49
2:D:181:VAL:HG22	2:D:398:MET:SD	2.52	0.49
1:C:324:VAL:HG22	13:C:605:HOH:O	2.12	0.49
4:F:91:CYS:HB2	4:F:93:TRP:CE2	2.48	0.49
1:A:71:GLU:OE2	1:A:73:THR:OG1	2.23	0.49
1:C:244:PHE:CD1	1:C:358:GLN:HG2	2.48	0.49

Continued on next page...

Continued from previous page...

Atom-1	Atom-2	Interatomic distance (Å)	Clash overlap (Å)
2:B:115:VAL:HG21	2:B:156:LYS:HD2	1.95	0.49
2:B:166:MET:HA	2:B:166:MET:HE3	1.93	0.49
1:A:1:MET:HG3	1:A:47:ASP:O	2.12	0.49
2:D:210:TYR:CD1	2:D:222:PRO:HG2	2.48	0.49
2:B:46:LEU:HA	2:B:49:ILE:HB	1.95	0.48
1:C:151[B]:SER:HB2	1:C:193:THR:HG21	1.95	0.48
1:A:227:LEU:O	1:A:231:ILE:HG13	2.14	0.48
2:D:36:TYR:CD1	2:D:46:LEU:HD21	2.48	0.48
4:F:1:MET:HE3	4:F:28:LYS:HB2	1.94	0.48
1:A:188:ILE:HD12	1:A:395:PHE:CD2	2.48	0.48
2:B:187:ALA:O	2:B:191:VAL:HG23	2.13	0.48
2:D:67:LEU:HD22	2:D:92:PHE:CE2	2.49	0.48
1:A:234:ILE:O	1:A:238:ILE:HG13	2.13	0.48
2:D:346:TRP:CE3	2:D:347:ILE:HG13	2.49	0.48
2:D:382:THR:O	2:D:385:GLN:HG2	2.12	0.48
4:F:2:TYR:CE1	4:F:359:PHE:HB3	2.48	0.48
4:F:186:LEU:HB2	12:F:501:ACP:H2	1.94	0.48
1:C:9:VAL:HG22	1:C:68[A]:VAL:CG1	2.44	0.48
1:C:426:ALA:O	1:C:430:LYS:HG3	2.12	0.48
2:D:204:ILE:HD13	2:D:231:VAL:HG13	1.94	0.48
1:A:93:ILE:HG22	1:A:114:ILE:HD11	1.95	0.48
1:A:386:GLU:OE2	4:F:66:ARG:NH2	2.45	0.48
2:B:414[B]:ASP:OD1	2:B:415:GLU:N	2.46	0.48
2:D:316:ALA:HB3	2:D:378:ILE:HB	1.96	0.48
2:B:389:LYS:O	2:B:393:GLU:HG3	2.14	0.48
4:F:161:LEU:HD23	4:F:169:LEU:HA	1.95	0.48
4:F:191:LEU:HD12	4:F:196:HIS:CE1	2.49	0.48
4:F:216:TYR:CZ	4:F:218:GLU:HB2	2.49	0.48
1:A:75:ILE:HB	1:A:94:THR:HG21	1.95	0.48
1:A:141:PHE:CE1	1:A:170:SER:HB3	2.49	0.48
1:C:14:VAL:HG13	1:C:67:PHE:HD2	1.79	0.47
1:C:136:LEU:HD23	1:C:167:LEU:HB2	1.96	0.47
3:E:60:ARG:O	3:E:64:GLN:HG3	2.14	0.47
1:C:298:PRO:HA	1:C:301:GLN:OE1	2.14	0.47
4:F:38:ASN:O	4:F:60:GLN:HA	2.13	0.47
1:A:248:LEU:HD21	1:A:316[B]:CYS:SG	2.54	0.47
4:F:1:MET:HE2	4:F:28:LYS:HB2	1.97	0.47
1:A:25:CYS:HB3	1:A:30:ILE:O	2.14	0.47
1:C:141:PHE:CE1	1:C:170:SER:HB3	2.49	0.47
1:C:214:ARG:HG2	1:C:219:ILE:O	2.15	0.47
2:D:318:ILE:N	2:D:318:ILE:HD12	2.29	0.47

Continued on next page...

Continued from previous page...

Atom-1	Atom-2	Interatomic distance (Å)	Clash overlap (Å)
2:B:2:ARG:HB3	2:B:133:GLN:HE21	1.79	0.47
2:B:286:LEU:N	2:B:286:LEU:HD12	2.29	0.47
1:C:427:ALA:HA	1:C:430:LYS:HD2	1.96	0.47
4:F:135:TYR:CE1	4:F:166:ALA:HB2	2.49	0.47
2:D:67:LEU:N	2:D:67:LEU:HD12	2.30	0.47
2:D:112:ALA:O	2:D:115:VAL:HG12	2.15	0.47
1:A:224:TYR:HE2	2:B:247:GLN:OE1	1.98	0.47
1:A:329:ASN:HB3	3:E:6:MET:HE1	1.96	0.47
2:B:63:PRO:CD	2:B:86:ILE:HG12	2.45	0.47
2:B:337:ASN:OD1	4:F:36:ARG:NE	2.38	0.47
1:C:204:VAL:HG22	1:C:302[B]:MET:HE3	1.97	0.47
4:F:297[B]:CYS:SG	4:F:298:ILE:HG23	2.55	0.47
1:A:161:TYR:HB3	1:A:164:LYS:CG	2.45	0.47
1:C:335:ILE:HG23	1:C:339:ARG:CG	2.41	0.47
13:C:640:HOH:O	2:D:247:GLN:HB3	2.14	0.47
2:D:6:HIS:CD2	2:D:21:TRP:HE1	2.33	0.47
2:B:143:GLY:O	2:B:147[B]:SER:OG	2.29	0.47
1:C:216:ASN:HB3	1:C:275:VAL:O	2.15	0.47
4:F:151:SER:HB3	4:F:180:HIS:CG	2.50	0.47
1:A:210:TYR:OH	1:A:221:ARG:HD2	2.14	0.47
2:B:67:LEU:N	2:B:67:LEU:HD12	2.30	0.47
2:B:135:PHE:HB2	2:B:166:MET:CE	2.44	0.47
1:A:75:ILE:HB	1:A:94:THR:CG2	2.45	0.46
4:F:292:ARG:HG2	4:F:296[A]:MET:SD	2.55	0.46
1:C:217:LEU:HD21	1:C:368:LEU:HD23	1.97	0.46
2:D:288:VAL:HB	2:D:289:PRO:HD3	1.96	0.46
1:A:395:PHE:CD1	1:A:422:ARG:HD3	2.51	0.46
2:B:88:ARG:HH11	2:B:90:ASP:HB2	1.79	0.46
1:C:210:TYR:CZ	1:C:222:PRO:HD2	2.50	0.46
1:C:167:LEU:HG	1:C:200:CYS:HB3	1.96	0.46
4:F:14:TYR:HB3	4:F:41:LEU:HD13	1.98	0.46
2:D:315:VAL:HB	2:D:351:VAL:HG22	1.97	0.46
4:F:89:GLU:OE1	4:F:89:GLU:N	2.49	0.46
4:F:287:ILE:HG23	4:F:319:PHE:CE2	2.50	0.46
1:A:331:ALA:O	1:A:335:ILE:HG13	2.15	0.46
2:B:395:PHE:CE1	2:B:422:GLU:HB2	2.51	0.46
3:E:72:LEU:O	3:E:76:ARG:HG2	2.16	0.46
2:B:123:ARG:O	2:B:127:GLU:HG3	2.16	0.45
4:F:214:TYR:HB3	4:F:375:PHE:HB3	1.97	0.45
2:D:10:GLY:O	2:D:14:ASN:ND2	2.41	0.45
2:B:112:ALA:O	2:B:115:VAL:HG12	2.16	0.45

Continued on next page...

Continued from previous page...

Atom-1	Atom-2	Interatomic distance (Å)	Clash overlap (Å)
2:B:306:ASP:HB3	2:B:309:HIS:ND1	2.31	0.45
1:C:286:LEU:N	1:C:286:LEU:HD12	2.31	0.45
1:A:21:TRP:CE3	1:A:63:PRO:HB3	2.51	0.45
1:A:401:LYS:HG3	2:B:346:TRP:CE3	2.50	0.45
2:B:327:GLU:HA	2:B:330:GLU:HG2	1.97	0.45
1:C:270:ALA:O	1:C:302[A]:MET:HG2	2.16	0.45
1:A:1:MET:HG2	1:A:51:THR:HG22	1.98	0.45
1:A:118:VAL:O	1:A:122:ILE:HG13	2.15	0.45
2:B:308:ARG:HG2	2:B:342:TYR:CZ	2.51	0.45
2:B:2:ARG:HB2	13:B:608:HOH:O	2.17	0.45
1:C:180:ALA:O	1:C:183:GLU:HG3	2.16	0.45
2:D:9:ALA:HA	2:D:68:VAL:O	2.17	0.45
2:D:207:GLU:HB3	2:D:390:ARG:HH12	1.81	0.45
2:D:231:VAL:O	2:D:235:MET:HG3	2.16	0.45
1:A:305:CYS:O	1:A:307:PRO:HD3	2.17	0.45
1:A:416:GLY:O	1:A:420:GLU:HG3	2.17	0.45
2:B:2:ARG:NE	2:B:133:GLN:HG2	2.31	0.45
1:A:291:ILE:HD13	1:A:373:ARG:HG3	1.97	0.45
1:C:204:VAL:HG13	1:C:302[B]:MET:HG2	1.99	0.45
2:D:35:SER:OG	2:D:60:LYS:HE2	2.16	0.45
1:C:150:THR:O	1:C:154:MET:HG2	2.17	0.44
1:C:151[B]:SER:HB2	1:C:193:THR:CG2	2.47	0.44
2:D:312:TYR:CE1	2:D:377:PHE:HZ	2.34	0.44
1:A:63:PRO:HD3	1:A:86:LEU:HG	1.99	0.44
1:A:262:TYR:HE2	1:A:346:TRP:CZ2	2.34	0.44
2:B:105:LYS:HA	2:B:109:THR:OG1	2.17	0.44
2:B:298:SER:HA	2:B:301:MET:HG2	1.98	0.44
2:D:396:THR:O	2:D:400:ARG:HG2	2.18	0.44
4:F:216:TYR:CE2	4:F:218:GLU:HB2	2.51	0.44
4:F:220:VAL:HG12	4:F:263:PHE:CE1	2.53	0.44
1:A:1:MET:HG2	1:A:51:THR:CG2	2.48	0.44
1:C:151[A]:SER:HA	1:C:194:THR:HG22	2.00	0.44
1:C:344:VAL:HG21	1:C:346:TRP:CE2	2.53	0.44
4:F:40:MET:HE3	4:F:52:LEU:HD21	1.99	0.44
4:F:299:GLU:HB3	4:F:300:PRO:HD3	1.99	0.44
2:B:135:PHE:HB2	2:B:166:MET:HE3	2.00	0.44
2:D:26:ASP:OD2	2:D:369:ARG:HD2	2.17	0.44
2:D:194:LEU:HD22	2:D:198:THR:HG21	2.00	0.44
4:F:160:ILE:HG22	4:F:161:LEU:N	2.32	0.44
4:F:286:GLN:O	4:F:290:ILE:HG13	2.18	0.44
1:C:151[B]:SER:HA	1:C:194:THR:HG22	2.00	0.44

Continued on next page...

Continued from previous page...

Atom-1	Atom-2	Interatomic distance (Å)	Clash overlap (Å)
4:F:100:ILE:HD12	4:F:128:ARG:CA	2.47	0.44
1:C:419:SER:O	1:C:423[B]:GLU:HG3	2.18	0.44
2:B:33:THR:HG22	2:B:33:THR:O	2.18	0.44
2:D:48:ARG:HH12	2:D:250:ALA:HB1	1.83	0.44
2:D:104:ALA:HB2	2:D:413:MET:SD	2.58	0.44
1:A:93:ILE:HD11	1:A:121:ARG:HG3	1.99	0.44
1:A:312:TYR:HE1	1:A:379:SER:HB2	1.83	0.44
1:C:21:TRP:CE3	1:C:63:PRO:HB3	2.53	0.44
2:D:153:LEU:O	2:D:157:ILE:HG13	2.18	0.44
2:B:229:HIS:NE2	2:B:278:ARG:HB3	2.32	0.44
2:D:181:VAL:HG12	11:D:503:5IX:C28	2.47	0.44
1:A:209:ILE:HD11	1:A:302:MET:SD	2.57	0.43
1:A:21:TRP:CH2	1:A:63:PRO:HB3	2.53	0.43
2:B:169:PHE:HE2	2:B:238:VAL:HG21	1.83	0.43
1:C:10:GLY:O	1:C:14:VAL:HG23	2.18	0.43
1:C:209:ILE:HD11	1:C:302[A]:MET:SD	2.58	0.43
4:F:49:PHE:CD2	4:F:66:ARG:HD3	2.53	0.43
2:D:120:ASP:HA	2:D:123:ARG:HH12	1.81	0.43
2:D:195:VAL:HG12	2:D:267:PHE:HE2	1.82	0.43
1:A:312:TYR:CE1	1:A:379:SER:HB2	2.53	0.43
2:D:210:TYR:CE1	2:D:222:PRO:HG2	2.54	0.43
2:B:295:MET:HG3	2:B:377:PHE:HB2	2.00	0.43
2:B:324:SER:O	2:B:328:VAL:HG23	2.19	0.43
2:D:46:LEU:HA	2:D:49:ILE:HB	2.01	0.43
2:D:66:ILE:HD12	2:D:122:VAL:HG22	2.01	0.43
1:A:54:SER:O	1:A:61:HIS:HA	2.18	0.43
1:A:175:PRO:HA	1:A:178:SER:CB	2.49	0.43
2:B:289:PRO:HG3	2:B:331:GLN:NE2	2.34	0.43
1:C:204:VAL:HA	1:C:302[B]:MET:HG2	2.01	0.43
1:A:98:ASP:HB2	5:A:501:GTP:O2G	2.18	0.43
2:B:237:GLY:HA3	2:B:376:THR:OG1	2.19	0.43
2:D:23:VAL:O	2:D:27:GLU:HG3	2.19	0.43
2:B:169:PHE:CE2	2:B:238:VAL:HG21	2.54	0.42
2:B:54:ASN:OD1	2:B:64:ARG:NH2	2.50	0.42
2:B:298:SER:HA	2:B:301:MET:CG	2.49	0.42
1:C:328:VAL:O	1:C:332:ILE:HG13	2.18	0.42
2:D:20:PHE:CZ	2:D:24:ILE:HD13	2.54	0.42
4:F:71:LEU:HD12	4:F:77:LEU:HD13	2.01	0.42
1:C:21:TRP:CZ2	1:C:65:ALA:HB2	2.54	0.42
4:F:287:ILE:HG23	4:F:319:PHE:CZ	2.55	0.42
1:C:75:ILE:HB	1:C:94:THR:CG2	2.49	0.42

Continued on next page...

Continued from previous page...

Atom-1	Atom-2	Interatomic distance (Å)	Clash overlap (Å)
1:C:276:ILE:HD11	1:C:280:LYS:C	2.40	0.42
1:A:34:GLY:HA3	1:A:60:LYS:HG3	2.01	0.42
1:A:103:TYR:CD1	1:A:148:GLY:HA2	2.55	0.42
1:A:241:SER:HB2	1:A:248:LEU:O	2.19	0.42
2:B:141:LEU:HD12	2:B:172:MET:SD	2.59	0.42
2:B:326:LYS:O	2:B:330:GLU:HG2	2.20	0.42
3:E:6:MET:HG2	3:E:24:LEU:HD23	2.02	0.42
4:F:49:PHE:CG	4:F:66:ARG:HD3	2.54	0.42
1:A:401:LYS:HE2	2:B:438:ALA:HB1	2.01	0.42
2:B:309:HIS:ND1	2:B:386:GLU:OE2	2.45	0.42
1:C:70:LEU:HD13	1:C:110:ILE:CG2	2.50	0.42
1:C:139:HIS:CD2	1:C:150:THR:HG21	2.55	0.42
1:C:162:GLY:HA2	3:E:94:ILE:HD11	2.02	0.42
4:F:163:SER:OG	4:F:168:GLU:HB2	2.19	0.42
4:F:267:PHE:CE2	4:F:279:LEU:HD13	2.54	0.42
4:F:3:THR:OG1	4:F:37:PHE:HA	2.20	0.42
1:A:10:GLY:O	1:A:14:VAL:HG23	2.19	0.42
1:A:209:ILE:HG23	1:A:230:LEU:HD23	2.02	0.42
2:B:208:ALA:HB2	2:B:304:ALA:HB2	2.01	0.42
1:C:119:LEU:HD11	1:C:156:ARG:HB3	2.02	0.42
2:D:69:ASP:OD2	2:D:74:THR:HB	2.19	0.41
2:D:165:ILE:HA	2:D:199:ASP:OD2	2.20	0.41
2:D:347:ILE:CG2	2:D:350:ASN:HB3	2.48	0.41
2:B:21:TRP:CE3	2:B:63:PRO:HB3	2.55	0.41
2:B:66:ILE:HD12	2:B:122:VAL:HG22	2.02	0.41
1:C:209:ILE:HG23	1:C:230:LEU:HD23	2.03	0.41
1:C:234:ILE:HD12	1:C:234:ILE:N	2.35	0.41
2:D:21:TRP:CE3	2:D:24:ILE:HD11	2.55	0.41
1:A:234:ILE:HD12	1:A:234:ILE:N	2.35	0.41
1:A:265:ILE:HG23	1:A:432:TYR:CE1	2.56	0.41
2:B:298:SER:HB3	2:B:307:PRO:HD2	2.03	0.41
1:C:63:PRO:HG2	1:C:87:PHE:CE2	2.56	0.41
2:D:5:VAL:HB	2:D:135:PHE:HD2	1.83	0.41
2:D:195:VAL:HG12	2:D:267:PHE:CZ	2.55	0.41
4:F:320:MET:CG	4:F:330:ILE:HD11	2.48	0.41
1:C:204:VAL:HG22	1:C:302[B]:MET:CE	2.50	0.41
2:B:68:VAL:HA	2:B:93:VAL:O	2.21	0.41
2:B:174:SER:OG	2:B:207:GLU:HB2	2.20	0.41
1:C:6:SER:O	1:C:65:ALA:HA	2.21	0.41
3:E:92[A]:ASN:HD21	3:E:96:MET:HE3	1.85	0.41
1:A:12:ALA:HB3	1:A:140:SER:HB3	2.03	0.41

Continued on next page...

Continued from previous page...

Atom-1	Atom-2	Interatomic distance (Å)	Clash overlap (Å)
1:A:208:ALA:O	1:A:212:ILE:HG13	2.21	0.41
2:B:19:LYS:HB3	2:B:232:SER:OG	2.21	0.41
1:A:128:GLN:HG2	1:A:128:GLN:O	2.21	0.41
2:B:2:ARG:CB	2:B:133:GLN:HE21	2.34	0.41
2:D:402:LYS:HE2	2:D:415:GLU:OE2	2.20	0.41
1:A:79:ARG:HG2	1:A:92:LEU:CD1	2.49	0.41
1:A:119:LEU:HD11	1:A:156:ARG:CB	2.48	0.41
2:B:9:ALA:HA	2:B:68:VAL:O	2.21	0.41
1:A:108:TYR:CE2	1:A:413:MET:HG3	2.56	0.41
1:A:401:LYS:CE	2:B:438:ALA:HB1	2.51	0.41
2:B:66:ILE:CD1	2:B:122:VAL:HG22	2.50	0.41
2:D:2:ARG:HB3	2:D:133:GLN:HG2	2.03	0.41
2:D:174:SER:CB	2:D:207:GLU:HB2	2.51	0.41
2:B:147[B]:SER:HB2	2:B:190:SER:HG	1.86	0.40
1:C:280:LYS:HD3	1:C:280:LYS:HA	1.91	0.40
4:F:58:LEU:HD23	4:F:58:LEU:HA	1.97	0.40
1:A:23:LEU:HD23	1:A:236:SER:HB2	2.03	0.40
1:A:75:ILE:CG2	1:A:92:LEU:HB3	2.52	0.40
1:C:151[A]:SER:HB3	1:C:193:THR:CG2	2.51	0.40
2:D:114:LEU:HD12	2:D:117:SER:OG	2.21	0.40
1:A:188:ILE:HD12	1:A:395:PHE:HB2	2.04	0.40
1:A:318:LEU:O	1:A:375:VAL:HA	2.21	0.40
1:A:346:TRP:HH2	1:A:435:VAL:HG13	1.87	0.40
1:C:93:ILE:CD1	1:C:121:ARG:HG3	2.44	0.40
2:D:2:ARG:NE	2:D:131:CYS:SG	2.95	0.40
2:D:36:TYR:CD2	2:D:46:LEU:HD11	2.56	0.40
2:B:141:LEU:HA	2:B:147[A]:SER:HB2	2.02	0.40
2:B:244:PHE:CE1	2:B:358:ILE:HD12	2.56	0.40
2:B:389:LYS:HE3	2:B:389:LYS:HB2	1.85	0.40
1:C:66:VAL:HG23	1:C:125:LEU:HD12	2.02	0.40

There are no symmetry-related clashes.

5.3 Torsion angles [i](#)

5.3.1 Protein backbone [i](#)

In the following table, the Percentiles column shows the percent Ramachandran outliers of the chain as a percentile score with respect to all X-ray entries followed by that with respect to entries of similar resolution.

The Analysed column shows the number of residues for which the backbone conformation was analysed, and the total number of residues.

Mol	Chain	Analysed	Favoured	Allowed	Outliers	Percentiles	
1	A	441/451 (98%)	429 (97%)	12 (3%)	0	100	100
1	C	446/451 (99%)	434 (97%)	12 (3%)	0	100	100
2	B	428/445 (96%)	416 (97%)	11 (3%)	1 (0%)	47	68
2	D	418/445 (94%)	403 (96%)	15 (4%)	0	100	100
3	E	123/143 (86%)	122 (99%)	1 (1%)	0	100	100
4	F	298/384 (78%)	288 (97%)	10 (3%)	0	100	100
All	All	2154/2319 (93%)	2092 (97%)	61 (3%)	1 (0%)	100	100

All (1) Ramachandran outliers are listed below:

Mol	Chain	Res	Type
2	B	276	THR

5.3.2 Protein sidechains [i](#)

In the following table, the Percentiles column shows the percent sidechain outliers of the chain as a percentile score with respect to all X-ray entries followed by that with respect to entries of similar resolution.

The Analysed column shows the number of residues for which the sidechain conformation was analysed, and the total number of residues.

Mol	Chain	Analysed	Rotameric	Outliers	Percentiles	
1	A	374/379 (99%)	373 (100%)	1 (0%)	92	97
1	C	379/379 (100%)	378 (100%)	1 (0%)	92	97
2	B	375/383 (98%)	372 (99%)	3 (1%)	81	93
2	D	365/383 (95%)	362 (99%)	3 (1%)	81	93
3	E	115/127 (91%)	114 (99%)	1 (1%)	78	92
4	F	279/342 (82%)	278 (100%)	1 (0%)	91	97
All	All	1887/1993 (95%)	1877 (100%)	10 (0%)	88	96

All (10) residues with a non-rotameric sidechain are listed below:

Mol	Chain	Res	Type
1	A	163	LYS

Continued on next page...

Continued from previous page...

Mol	Chain	Res	Type
2	B	26	ASP
2	B	139	HIS
2	B	275	LEU
1	C	71	GLU
2	D	139	HIS
2	D	291	LEU
2	D	345	GLU
3	E	29	PHE
4	F	66	ARG

Sometimes sidechains can be flipped to improve hydrogen bonding and reduce clashes. All (3) such sidechains are listed below:

Mol	Chain	Res	Type
2	D	8	GLN
2	D	167	ASN
3	E	136	ASN

5.3.3 RNA [i](#)

There are no RNA molecules in this entry.

5.4 Non-standard residues in protein, DNA, RNA chains [i](#)

There are no non-standard protein/DNA/RNA residues in this entry.

5.5 Carbohydrates [i](#)

There are no monosaccharides in this entry.

5.6 Ligand geometry [i](#)

Of 16 ligands modelled in this entry, 8 are monoatomic - leaving 8 for Mogul analysis.

In the following table, the Counts columns list the number of bonds (or angles) for which Mogul statistics could be retrieved, the number of bonds (or angles) that are observed in the model and the number of bonds (or angles) that are defined in the Chemical Component Dictionary. The Link column lists molecule types, if any, to which the group is linked. The Z score for a bond length (or angle) is the number of standard deviations the observed value is removed from the expected value. A bond length (or angle) with $|Z| > 2$ is considered an outlier worth inspection. RMSZ is the root-mean-square of all Z scores of the bond lengths (or angles).

Mol	Type	Chain	Res	Link	Bond lengths			Bond angles		
					Counts	RMSZ	# Z > 2	Counts	RMSZ	# Z > 2
9	MES	B	503	-	12,12,12	2.22	1 (8%)	14,16,16	2.01	5 (35%)
8	GDP	B	501	6	24,30,30	1.19	2 (8%)	31,47,47	1.93	8 (25%)
5	GTP	C	501	6	26,34,34	1.00	1 (3%)	33,54,54	1.78	6 (18%)
12	ACP	F	501	-	27,33,33	1.99	7 (25%)	32,52,52	1.32	4 (12%)
10	IMD	C	504	-	3,5,5	0.42	0	4,5,5	0.56	0
11	5IX	D	503	-	50,52,52	1.22	6 (12%)	59,77,77	1.63	11 (18%)
5	GTP	A	501	6	26,34,34	0.99	1 (3%)	33,54,54	1.79	7 (21%)
8	GDP	D	501	6	24,30,30	1.18	2 (8%)	31,47,47	1.95	8 (25%)

In the following table, the Chirals column lists the number of chiral outliers, the number of chiral centers analysed, the number of these observed in the model and the number defined in the Chemical Component Dictionary. Similar counts are reported in the Torsion and Rings columns. '-' means no outliers of that kind were identified.

Mol	Type	Chain	Res	Link	Chirals	Torsions	Rings
9	MES	B	503	-	-	4/6/14/14	0/1/1/1
8	GDP	B	501	6	-	5/12/32/32	0/3/3/3
5	GTP	C	501	6	-	8/18/38/38	0/3/3/3
12	ACP	F	501	-	-	7/15/38/38	0/3/3/3
11	5IX	D	503	-	-	12/49/76/76	0/3/5/5
10	IMD	C	504	-	-	-	0/1/1/1
5	GTP	A	501	6	-	7/18/38/38	0/3/3/3
8	GDP	D	501	6	-	3/12/32/32	0/3/3/3

All (20) bond length outliers are listed below:

Mol	Chain	Res	Type	Atoms	Z	Observed(Å)	Ideal(Å)
9	B	503	MES	C8-S	-7.42	1.67	1.77
12	F	501	ACP	PG-O1G	5.46	1.61	1.50
8	B	501	GDP	C5-C6	4.19	1.48	1.41
8	D	501	GDP	C5-C6	4.18	1.48	1.41
12	F	501	ACP	PB-O1B	4.09	1.61	1.51
11	D	503	5IX	O29-C23	-3.68	1.40	1.45
11	D	503	5IX	C25-C23	3.65	1.51	1.47
12	F	501	ACP	PB-O2B	-3.49	1.48	1.56
12	F	501	ACP	PB-O3A	3.33	1.62	1.58
5	C	501	GTP	C6-N1	3.17	1.38	1.33
5	A	501	GTP	C6-N1	3.16	1.38	1.33
11	D	503	5IX	C5-N31	-2.82	1.40	1.44

Continued on next page...

Continued from previous page...

Mol	Chain	Res	Type	Atoms	Z	Observed(Å)	Ideal(Å)
12	F	501	ACP	PG-O2G	-2.79	1.48	1.54
12	F	501	ACP	PG-O3G	2.76	1.61	1.54
12	F	501	ACP	C5-C4	2.51	1.47	1.40
8	D	501	GDP	C5-C4	2.45	1.47	1.40
8	B	501	GDP	C5-C4	2.42	1.47	1.40
11	D	503	5IX	O18-C19	-2.20	1.43	1.46
11	D	503	5IX	C17-N16	2.07	1.39	1.34
11	D	503	5IX	C27-C26	2.07	1.55	1.52

All (49) bond angle outliers are listed below:

Mol	Chain	Res	Type	Atoms	Z	Observed(°)	Ideal(°)
11	D	503	5IX	C25-O29-C23	6.25	64.55	60.79
5	C	501	GTP	N3-C2-N1	-5.34	120.10	127.22
5	A	501	GTP	N3-C2-N1	-5.34	120.10	127.22
8	B	501	GDP	C2-N3-C4	4.86	120.91	115.36
8	D	501	GDP	C2-N3-C4	4.78	120.82	115.36
11	D	503	5IX	O29-C25-C23	-4.31	56.48	59.38
5	A	501	GTP	C2-N3-C4	4.12	120.06	115.36
8	D	501	GDP	C2-N1-C6	4.08	122.41	115.93
8	B	501	GDP	C2-N1-C6	4.04	122.36	115.93
8	B	501	GDP	C4-C5-C6	-4.04	116.94	120.80
5	C	501	GTP	C2-N3-C4	4.03	119.96	115.36
11	D	503	5IX	O30-C26-C25	4.01	114.53	105.48
8	D	501	GDP	C5-C6-N1	-3.99	117.98	123.43
8	D	501	GDP	C4-C5-C6	-3.91	117.06	120.80
8	B	501	GDP	C5-C6-N1	-3.90	118.09	123.43
11	D	503	5IX	C6-C5-N31	3.79	124.60	120.71
9	B	503	MES	C5-N4-C3	3.73	117.23	108.83
12	F	501	ACP	C3'-C2'-C1'	3.57	106.35	100.98
9	B	503	MES	O1S-S-C8	3.48	111.11	106.92
8	B	501	GDP	N3-C2-N1	-3.35	122.76	127.22
11	D	503	5IX	C26-O30-C39	3.32	124.16	117.92
8	D	501	GDP	N3-C2-N1	-3.29	122.83	127.22
5	A	501	GTP	PA-O3A-PB	-3.25	121.68	132.83
9	B	503	MES	C6-C5-N4	-3.24	105.19	110.10
5	C	501	GTP	PA-O3A-PB	-3.23	121.74	132.83
8	D	501	GDP	PA-O3A-PB	-3.14	122.05	132.83
5	C	501	GTP	PB-O3B-PG	-3.14	122.06	132.83
12	F	501	ACP	N3-C2-N1	-3.05	123.91	128.68
5	A	501	GTP	C5-C6-N1	-2.99	119.34	123.43
5	C	501	GTP	C5-C6-N1	-2.99	119.34	123.43

Continued on next page...

Continued from previous page...

Mol	Chain	Res	Type	Atoms	Z	Observed(°)	Ideal(°)
8	B	501	GDP	C4-C5-N7	-2.77	106.51	109.40
5	A	501	GTP	PB-O3B-PG	-2.76	123.36	132.83
8	B	501	GDP	PA-O3A-PB	-2.76	123.36	132.83
8	D	501	GDP	C4-C5-N7	-2.71	106.58	109.40
11	D	503	5IX	O18-C19-C22	2.71	111.38	105.76
5	C	501	GTP	C2-N1-C6	2.67	120.18	115.93
5	A	501	GTP	C2-N1-C6	2.66	120.15	115.93
12	F	501	ACP	PB-O3A-PA	-2.57	124.40	132.56
12	F	501	ACP	C4-C5-N7	-2.47	106.83	109.40
11	D	503	5IX	C27-C28-N31	-2.41	116.17	118.89
8	D	501	GDP	C3'-C2'-C1'	2.39	104.57	100.98
11	D	503	5IX	O34-C1-C6	2.23	118.18	115.53
9	B	503	MES	C7-N4-C5	2.23	116.92	111.23
9	B	503	MES	O3S-S-C8	2.17	109.28	105.77
11	D	503	5IX	C4-C5-C6	-2.14	119.80	122.53
11	D	503	5IX	O34-C1-C2	-2.13	120.45	124.12
8	B	501	GDP	C3'-C2'-C1'	2.07	104.10	100.98
5	A	501	GTP	C3'-C2'-C1'	2.04	104.05	100.98
11	D	503	5IX	C5-C6-CL33	2.04	122.25	120.09

There are no chirality outliers.

All (46) torsion outliers are listed below:

Mol	Chain	Res	Type	Atoms
5	A	501	GTP	PB-O3B-PG-O2G
5	A	501	GTP	PB-O3B-PG-O3G
5	A	501	GTP	C5'-O5'-PA-O1A
5	A	501	GTP	C5'-O5'-PA-O2A
5	C	501	GTP	C5'-O5'-PA-O1A
8	B	501	GDP	C5'-O5'-PA-O1A
8	B	501	GDP	C5'-O5'-PA-O2A
8	D	501	GDP	C5'-O5'-PA-O1A
8	D	501	GDP	C5'-O5'-PA-O2A
9	B	503	MES	C8-C7-N4-C5
9	B	503	MES	C7-C8-S-O1S
9	B	503	MES	C7-C8-S-O2S
9	B	503	MES	C7-C8-S-O3S
11	D	503	5IX	C6-C1-O34-C36
12	F	501	ACP	PG-C3B-PB-O1B
12	F	501	ACP	PG-C3B-PB-O2B
12	F	501	ACP	PG-C3B-PB-O3A
12	F	501	ACP	C5'-O5'-PA-O3A

Continued on next page...

Continued from previous page...

Mol	Chain	Res	Type	Atoms
11	D	503	5IX	C2-C1-O34-C36
11	D	503	5IX	C12-C13-O15-C37
11	D	503	5IX	C40-C39-O30-C26
11	D	503	5IX	C25-C26-O30-C39
11	D	503	5IX	O41-C39-O30-C26
11	D	503	5IX	C14-C13-O15-C37
5	C	501	GTP	PB-O3B-PG-O1G
5	C	501	GTP	C5'-O5'-PA-O3A
5	C	501	GTP	PB-O3A-PA-O2A
5	C	501	GTP	C5'-O5'-PA-O2A
12	F	501	ACP	C5'-O5'-PA-O1A
12	F	501	ACP	C5'-O5'-PA-O2A
12	F	501	ACP	PB-C3B-PG-O2G
11	D	503	5IX	O30-C39-C40-C42
11	D	503	5IX	C20-C19-C22-C24
5	C	501	GTP	C4'-C5'-O5'-PA
11	D	503	5IX	C26-C27-C28-O32
5	A	501	GTP	C4'-C5'-O5'-PA
5	C	501	GTP	PB-O3B-PG-O2G
5	C	501	GTP	PB-O3B-PG-O3G
5	A	501	GTP	C5'-O5'-PA-O3A
8	B	501	GDP	C5'-O5'-PA-O3A
8	D	501	GDP	C5'-O5'-PA-O3A
5	A	501	GTP	PB-O3A-PA-O2A
8	B	501	GDP	PB-O3A-PA-O1A
8	B	501	GDP	PB-O3A-PA-O2A
11	D	503	5IX	C26-C27-C28-N31
11	D	503	5IX	O41-C39-C40-C42

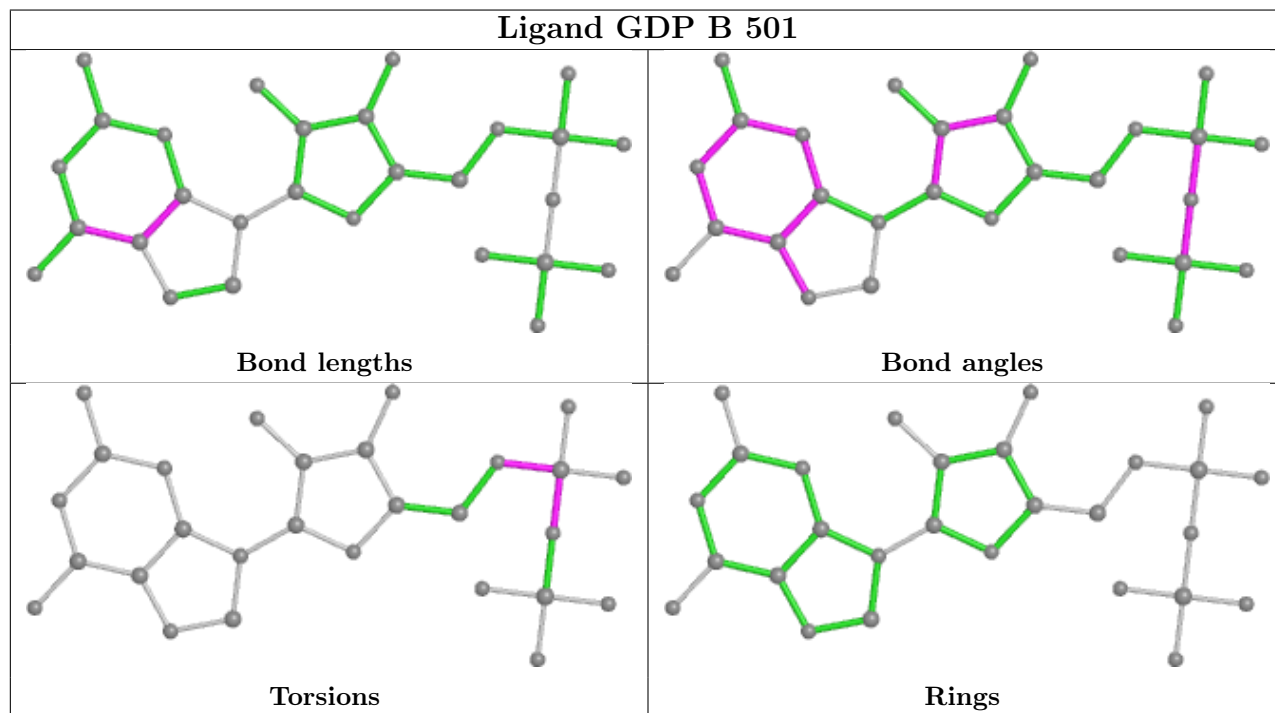
There are no ring outliers.

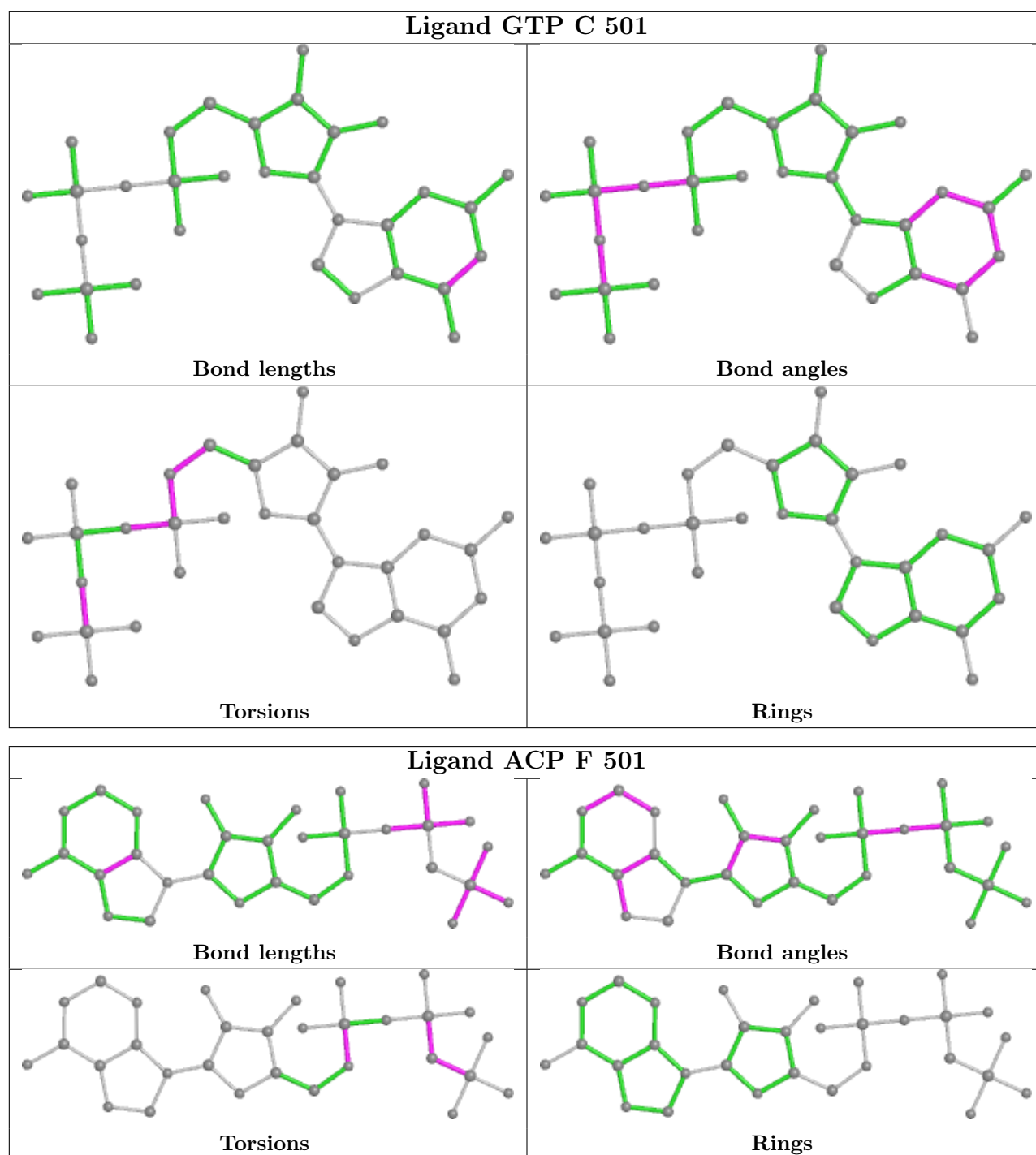
6 monomers are involved in 6 short contacts:

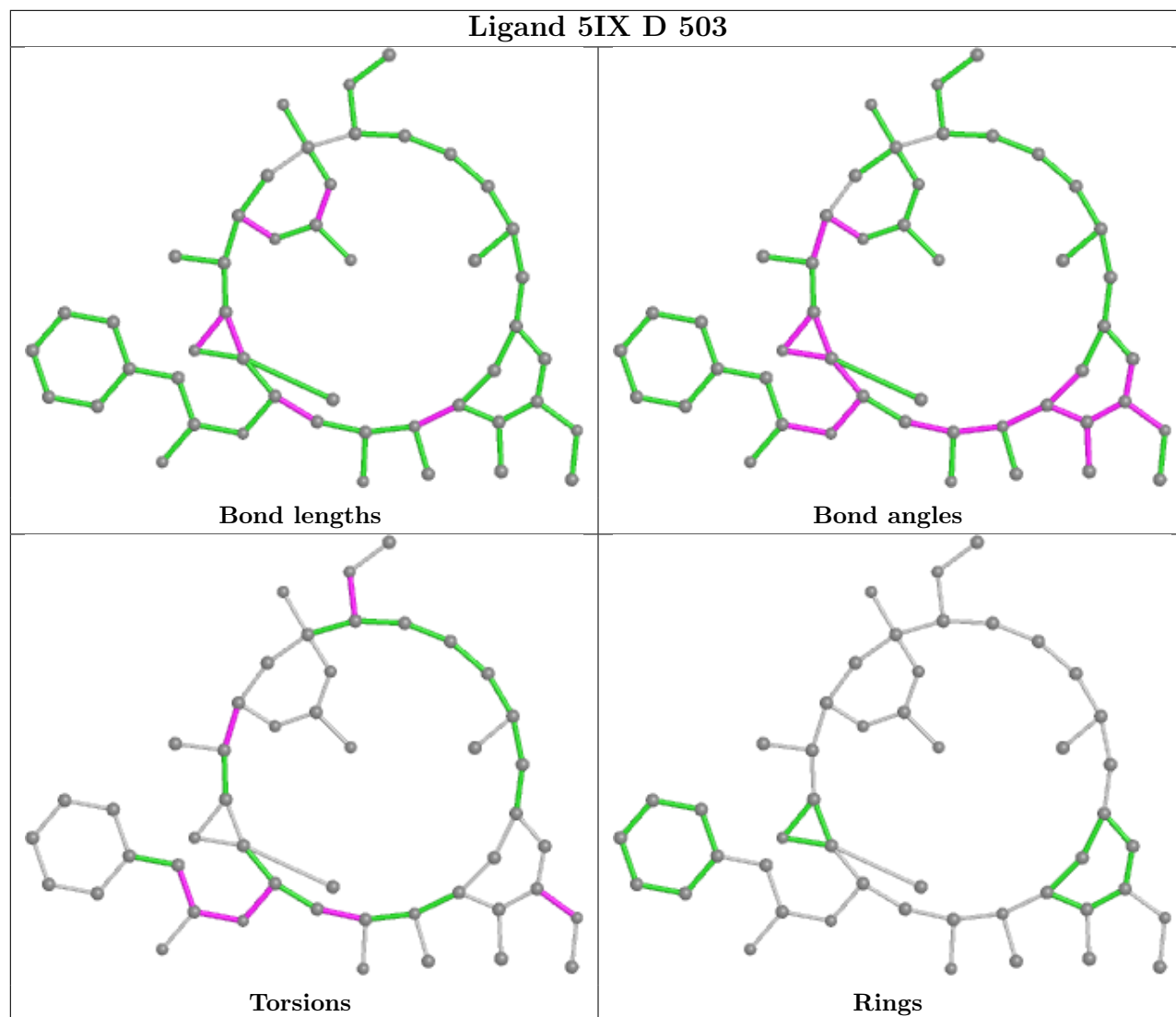
Mol	Chain	Res	Type	Clashes	Symm-Clashes
9	B	503	MES	1	0
12	F	501	ACP	1	0
10	C	504	IMD	1	0
11	D	503	5IX	1	0
5	A	501	GTP	1	0
8	D	501	GDP	1	0

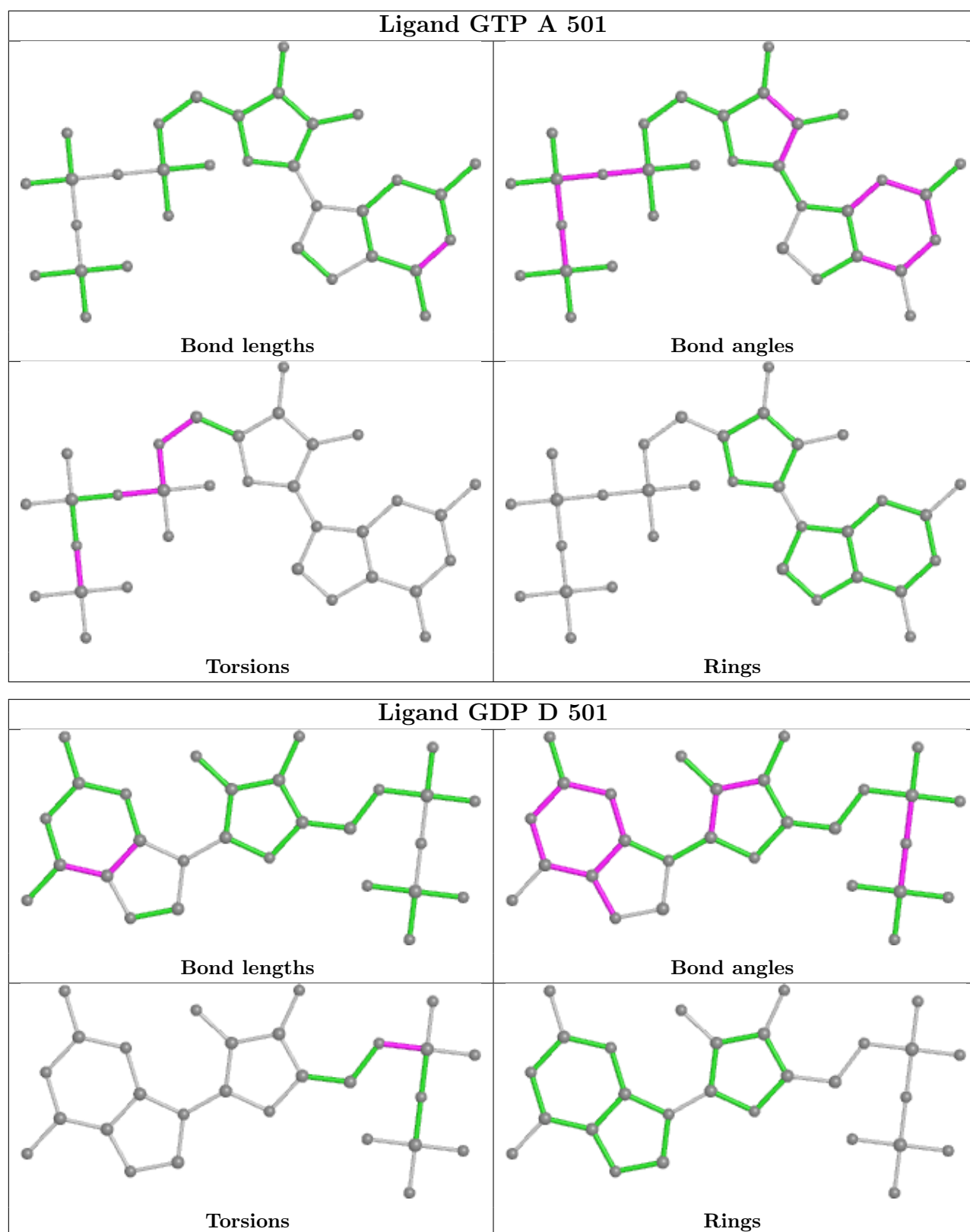
The following is a two-dimensional graphical depiction of Mogul quality analysis of bond lengths, bond angles, torsion angles, and ring geometry for all instances of the Ligand of Interest. In

addition, ligands with molecular weight > 250 and outliers as shown on the validation Tables will also be included. For torsion angles, if less than 5% of the Mogul distribution of torsion angles is within 10 degrees of the torsion angle in question, then that torsion angle is considered an outlier. Any bond that is central to one or more torsion angles identified as an outlier by Mogul will be highlighted in the graph. For rings, the root-mean-square deviation (RMSD) between the ring in question and similar rings identified by Mogul is calculated over all ring torsion angles. If the average RMSD is greater than 60 degrees and the minimal RMSD between the ring in question and any Mogul-identified rings is also greater than 60 degrees, then that ring is considered an outlier. The outliers are highlighted in purple. The color gray indicates Mogul did not find sufficient equivalents in the CSD to analyse the geometry.









5.7 Other polymers [i](#)

There are no such residues in this entry.

5.8 Polymer linkage issues

There are no chain breaks in this entry.

6 Fit of model and data

6.1 Protein, DNA and RNA chains

In the following table, the column labelled ‘#RSRZ > 2’ contains the number (and percentage) of RSRZ outliers, followed by percent RSRZ outliers for the chain as percentile scores relative to all X-ray entries and entries of similar resolution. The OWAB column contains the minimum, median, 95th percentile and maximum values of the occupancy-weighted average B-factor per residue. The column labelled ‘Q < 0.9’ lists the number of (and percentage) of residues with an average occupancy less than 0.9.

Mol	Chain	Analysed	<RSRZ>	#RSRZ>2	OWAB(Å ²)	Q<0.9
1	A	437/451 (96%)	-0.01	7 (1%) 72 74	42, 57, 88, 150	0
1	C	440/451 (97%)	-0.23	1 (0%) 95 95	33, 46, 71, 120	0
2	B	424/445 (95%)	-0.07	8 (1%) 66 69	36, 53, 83, 136	0
2	D	421/445 (94%)	0.15	15 (3%) 42 46	43, 69, 99, 140	0
3	E	123/143 (86%)	0.32	9 (7%) 15 15	49, 71, 109, 124	0
4	F	308/384 (80%)	0.93	72 (23%) 0 0	50, 81, 146, 188	0
All	All	2153/2319 (92%)	0.12	112 (5%) 27 29	33, 60, 104, 188	0

All (112) RSRZ outliers are listed below:

Mol	Chain	Res	Type	RSRZ
4	F	161	LEU	7.2
4	F	225	SER	6.4
4	F	142	ARG	6.2
4	F	169	LEU	6.1
4	F	100	ILE	5.8
1	A	282	TYR	5.2
4	F	259	GLY	5.1
4	F	133	ALA	4.9
4	F	131	PHE	4.9
4	F	173	ILE	4.8
4	F	224	SER	4.7
4	F	166	ALA	4.7
2	B	57	THR	4.6
3	E	29	PHE	4.5
4	F	132	LEU	4.4
4	F	320	MET	4.4
4	F	199	PHE	4.4
4	F	134	ALA	4.3
4	F	130	VAL	4.3

Continued on next page...

Continued from previous page...

Mol	Chain	Res	Type	RSRZ
2	D	57	THR	4.2
4	F	226	GLU	4.1
2	B	284	ARG	4.1
4	F	20	LEU	4.1
4	F	260	ASN	4.1
4	F	182	ILE	4.0
4	F	194	PRO	4.0
4	F	101	TYR	4.0
4	F	136	ASN	4.0
4	F	192	LEU	3.9
2	B	59	ASN	3.9
4	F	139	ARG	3.9
3	E	43	ARG	3.8
3	E	26	PRO	3.8
4	F	228	TYR	3.8
4	F	143	GLU	3.7
3	E	27	PRO	3.6
2	D	177	VAL	3.6
4	F	197	ARG	3.6
2	D	405	LEU	3.6
4	F	196	HIS	3.5
1	C	340	SER	3.4
3	E	25	LYS	3.4
4	F	227	PRO	3.4
4	F	135	TYR	3.4
2	D	400	ARG	3.4
4	F	147	TRP	3.3
3	E	24	LEU	3.3
3	E	139	LEU	3.3
4	F	221	LEU	3.2
4	F	223	THR	3.2
4	F	165	GLU	3.2
4	F	145	ASN	3.2
2	D	219	LEU	3.2
1	A	364	PRO	3.1
4	F	172	PHE	3.1
2	B	37	HIS	3.1
4	F	159	GLY	3.0
4	F	198	LYS	3.0
1	A	281	ALA	3.0
4	F	201	ILE	2.9
2	D	58	GLY	2.9

Continued on next page...

Continued from previous page...

Mol	Chain	Res	Type	RSRZ
4	F	361	LEU	2.9
4	F	102	PRO	2.9
4	F	168	GLU	2.8
4	F	103	THR	2.8
4	F	129	GLU	2.8
1	A	262	TYR	2.7
4	F	99	VAL	2.7
4	F	148	ILE	2.7
4	F	163	SER	2.6
1	A	346	TRP	2.6
4	F	262	MET	2.6
4	F	17	VAL	2.5
4	F	186	LEU	2.5
4	F	340	GLN	2.5
4	F	263	PHE	2.5
4	F	187	GLU	2.5
2	D	37	HIS	2.4
4	F	220	VAL	2.4
3	E	28	SER	2.4
2	D	60	LYS	2.4
2	B	276	THR	2.4
2	D	406	HIS	2.4
4	F	160	ILE	2.4
4	F	21	LEU	2.4
4	F	362	ALA	2.3
3	E	45	PRO	2.3
2	D	94	PHE	2.3
2	D	59	ASN	2.3
4	F	138	ARG	2.3
2	B	56	ALA	2.2
2	D	82	PRO	2.2
2	D	218	LYS	2.2
4	F	23	ALA	2.2
2	B	33	THR	2.2
4	F	27	TRP	2.2
4	F	343	TYR	2.2
1	A	42	ILE	2.2
1	A	283	HIS	2.2
4	F	24	THR	2.2
4	F	98	TYR	2.1
4	F	342	LEU	2.1
4	F	137	ARG	2.1

Continued on next page...

Continued from previous page...

Mol	Chain	Res	Type	RSRZ
2	B	34	GLY	2.1
4	F	26	GLN	2.1
2	D	401	ARG	2.1
4	F	338	CYS	2.1
4	F	185	TYR	2.0
2	D	46	LEU	2.0
4	F	181	VAL	2.0
4	F	128	ARG	2.0
4	F	162	ILE	2.0

6.2 Non-standard residues in protein, DNA, RNA chains [i](#)

There are no non-standard protein/DNA/RNA residues in this entry.

6.3 Carbohydrates [i](#)

There are no monosaccharides in this entry.

6.4 Ligands [i](#)

In the following table, the Atoms column lists the number of modelled atoms in the group and the number defined in the chemical component dictionary. The B-factors column lists the minimum, median, 95th percentile and maximum values of B factors of atoms in the group. The column labelled 'Q< 0.9' lists the number of atoms with occupancy less than 0.9.

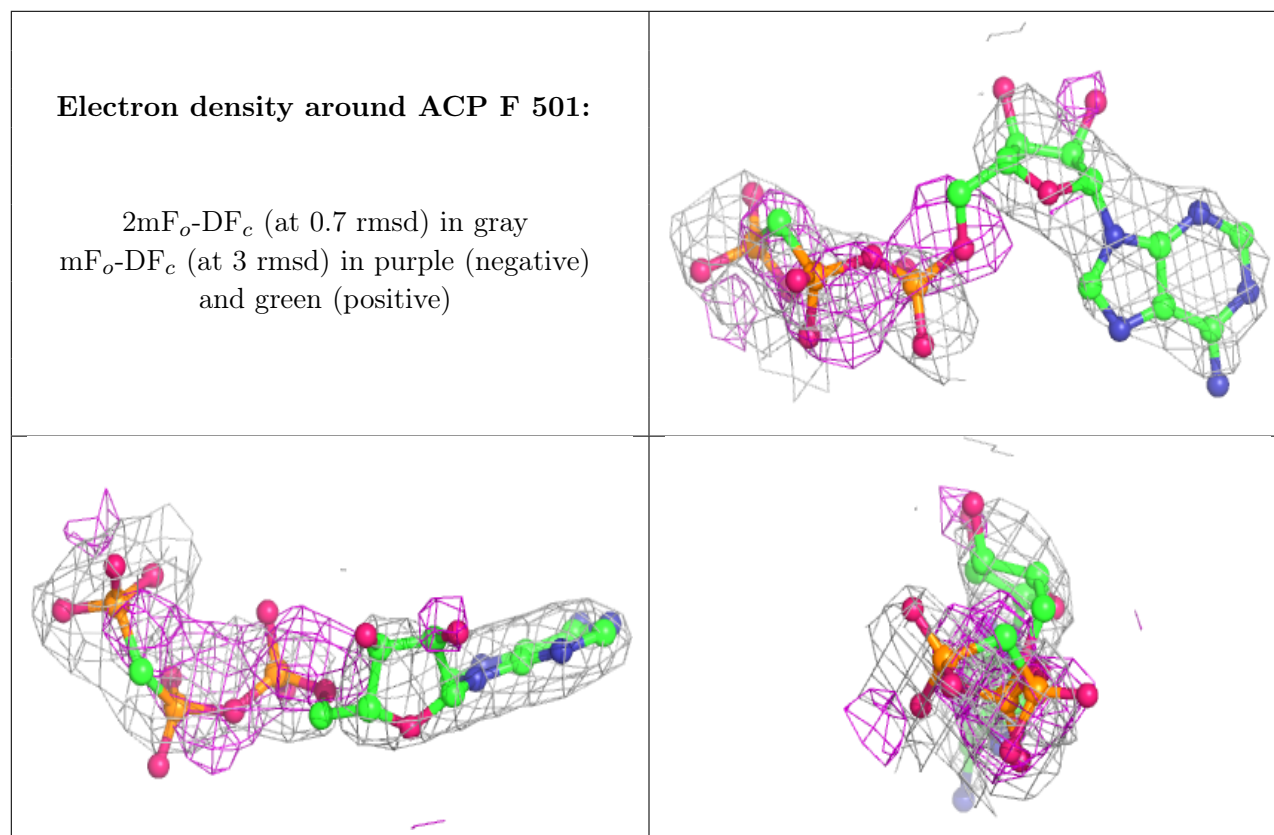
Mol	Type	Chain	Res	Atoms	RSCC	RSR	B-factors(Å ²)	Q<0.9
6	MG	F	502	1/1	0.32	0.31	111,111,111,111	0
7	CA	A	504	1/1	0.79	0.22	102,102,102,102	0
12	ACP	F	501	31/31	0.79	0.42	102,110,139,146	0
11	5IX	D	503	48/48	0.87	0.25	72,85,101,115	0
6	MG	D	502	1/1	0.90	0.05	73,73,73,73	0
10	IMD	C	504	5/5	0.93	0.15	59,71,79,86	0
8	GDP	D	501	28/28	0.96	0.14	55,67,76,80	0
9	MES	B	503	12/12	0.97	0.13	38,48,63,67	0
5	GTP	A	501	32/32	0.98	0.22	35,44,53,59	0
5	GTP	C	501	32/32	0.98	0.16	30,39,49,50	0
6	MG	B	502	1/1	0.98	0.22	36,36,36,36	0
7	CA	C	503	1/1	0.98	0.07	65,65,65,65	0
8	GDP	B	501	28/28	0.98	0.21	32,40,49,50	0
7	CA	A	503	1/1	0.99	0.05	84,84,84,84	0

Continued on next page...

Continued from previous page...

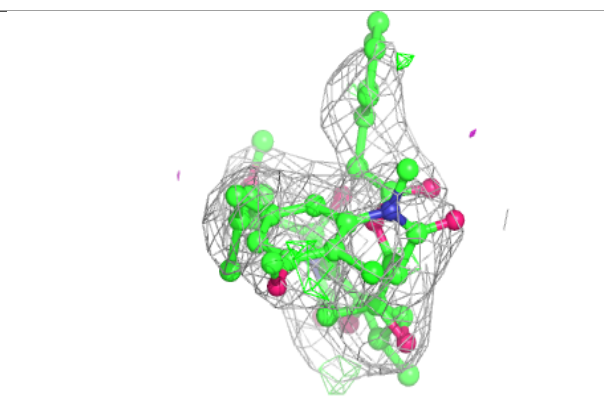
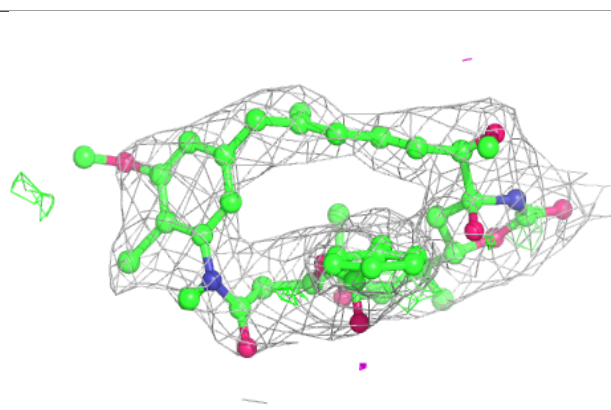
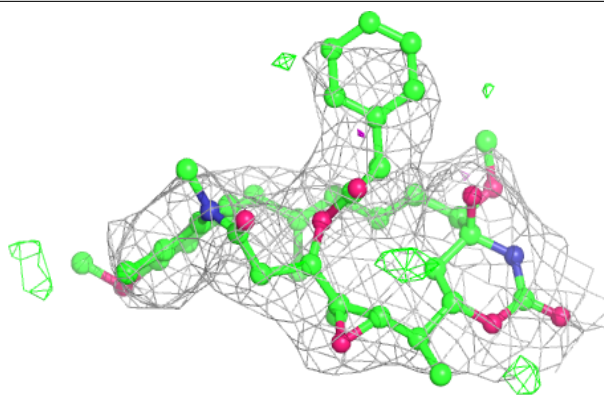
Mol	Type	Chain	Res	Atoms	RSCC	RSR	B-factors(\AA^2)	Q<0.9
6	MG	A	502	1/1	0.99	0.16	37,37,37,37	0
6	MG	C	502	1/1	0.99	0.11	39,39,39,39	0

The following is a graphical depiction of the model fit to experimental electron density of all instances of the Ligand of Interest. In addition, ligands with molecular weight > 250 and outliers as shown on the geometry validation Tables will also be included. Each fit is shown from different orientation to approximate a three-dimensional view.

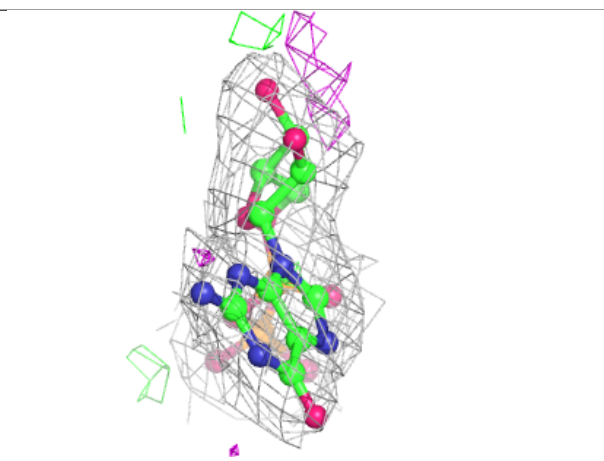
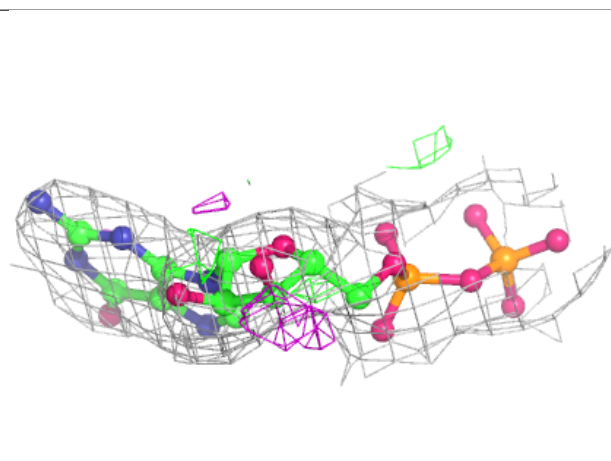
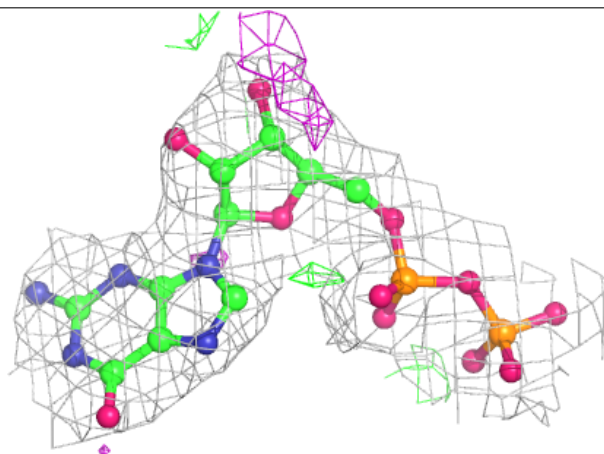


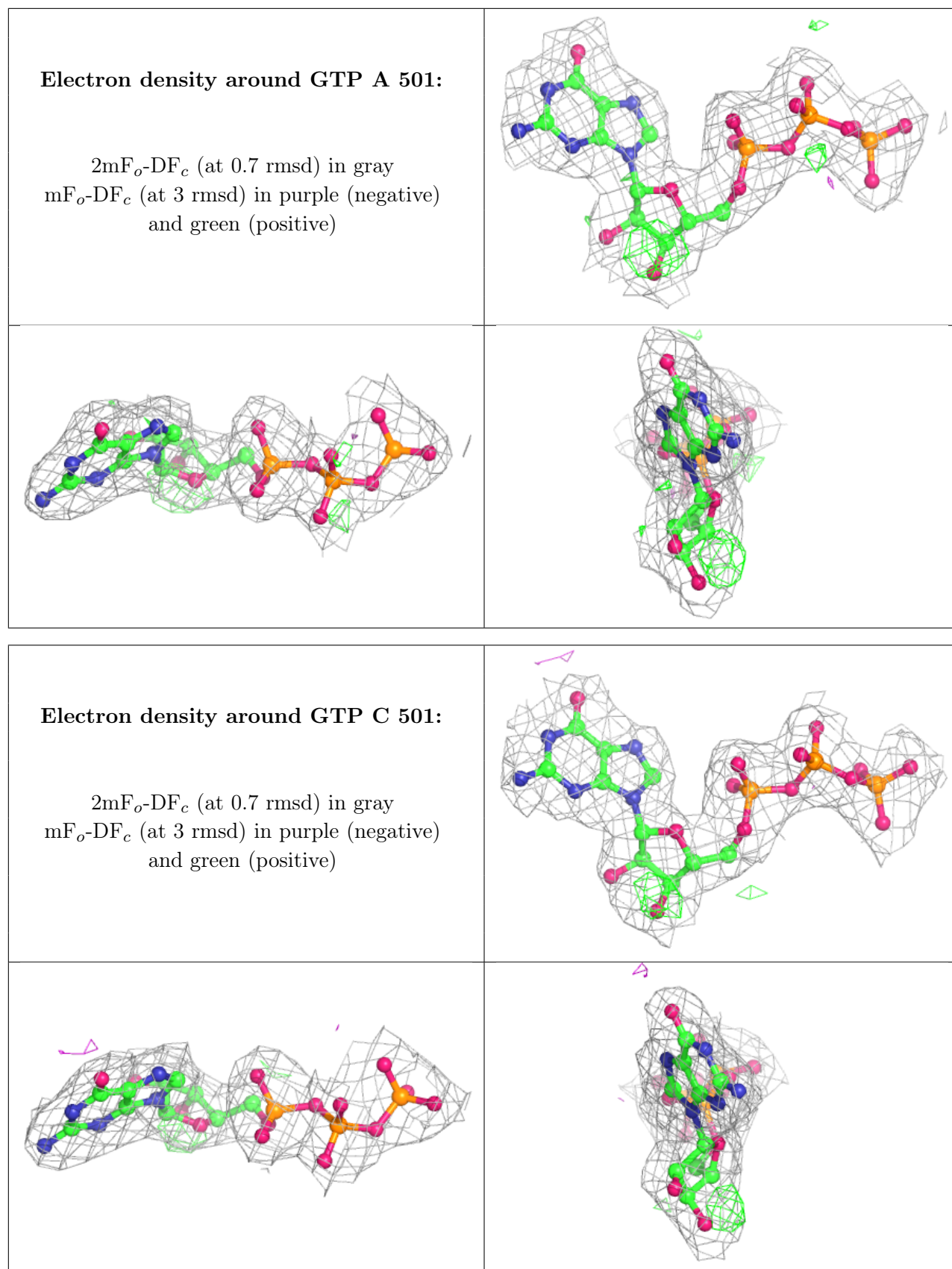
Electron density around 5IX D 503:

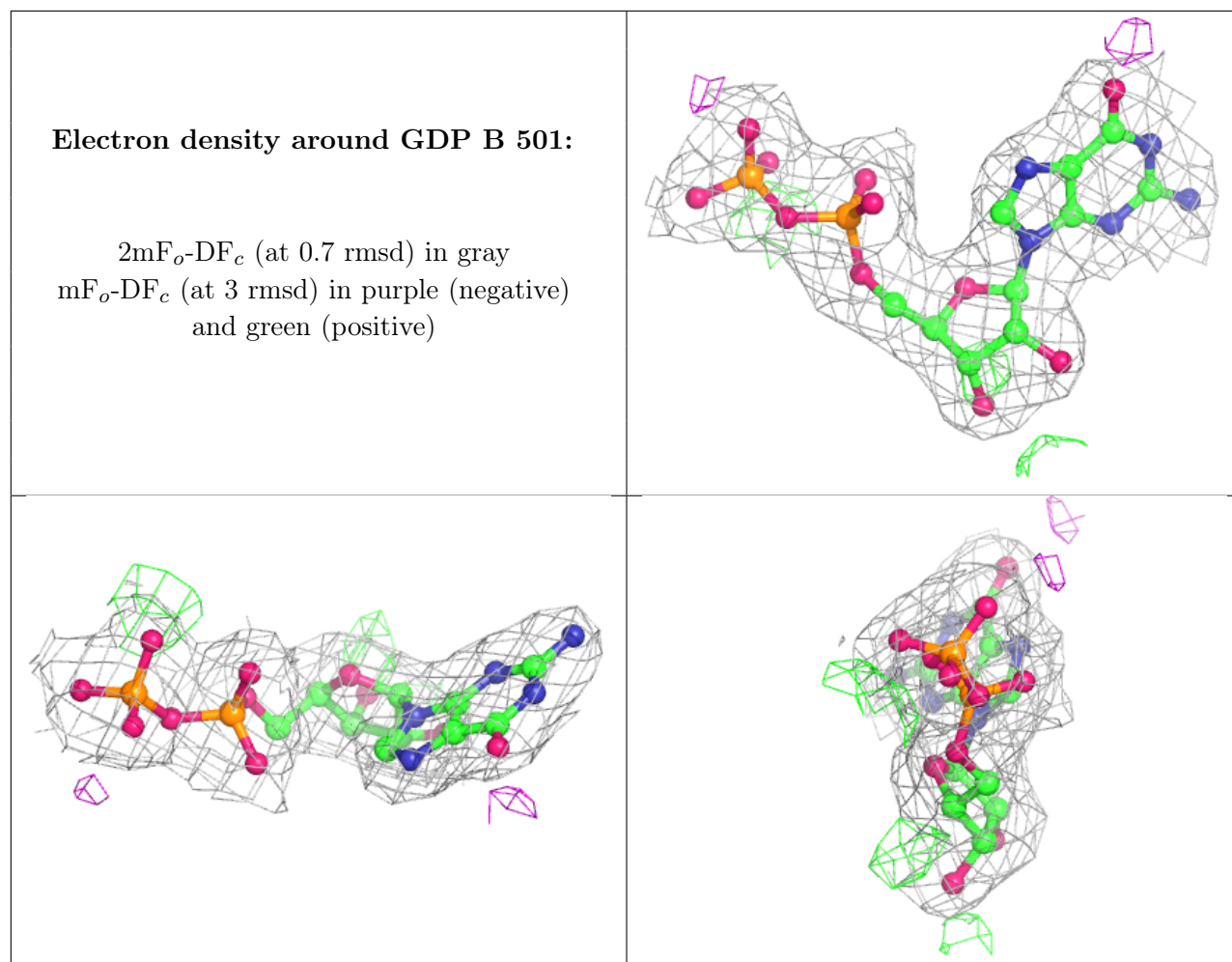
$2mF_o-DF_c$ (at 0.7 rmsd) in gray
 mF_o-DF_c (at 3 rmsd) in purple (negative)
and green (positive)

**Electron density around GDP D 501:**

$2mF_o-DF_c$ (at 0.7 rmsd) in gray
 mF_o-DF_c (at 3 rmsd) in purple (negative)
and green (positive)







6.5 Other polymers [i](#)

There are no such residues in this entry.