



# Full wwPDB X-ray Structure Validation Report ⓘ

Nov 12, 2024 – 06:14 PM EST

PDB ID : 3STZ  
Title : KcsA potassium channel mutant Y82C with nitroxide spin label  
Authors : Raghuraman, H.; Cordero-Morales, J.; Jogini, V.; Perozo, E.  
Deposited on : 2011-07-11  
Resolution : 2.50 Å(reported)

This is a Full wwPDB X-ray Structure Validation Report for a publicly released PDB entry.

We welcome your comments at [validation@mail.wwpdb.org](mailto:validation@mail.wwpdb.org)

A user guide is available at

<https://www.wwpdb.org/validation/2017/XrayValidationReportHelp>

with specific help available everywhere you see the ⓘ symbol.

The types of validation reports are described at

<http://www.wwpdb.org/validation/2017/FAQs#types>.

---

The following versions of software and data (see [references ⓘ](#)) were used in the production of this report:

MolProbity : 4.02b-467  
Mogul : 2022.3.0, CSD as543be (2022)  
Xtriage (Phenix) : 1.20.1  
EDS : 3.0  
buster-report : 1.1.7 (2018)  
Percentile statistics : 20231227.v01 (using entries in the PDB archive December 27th 2023)  
CCP4 : 9.0.003 (Gargrove)  
Density-Fitness : 1.0.11  
Ideal geometry (proteins) : Engh & Huber (2001)  
Ideal geometry (DNA, RNA) : Parkinson et al. (1996)  
Validation Pipeline (wwPDB-VP) : 2.39

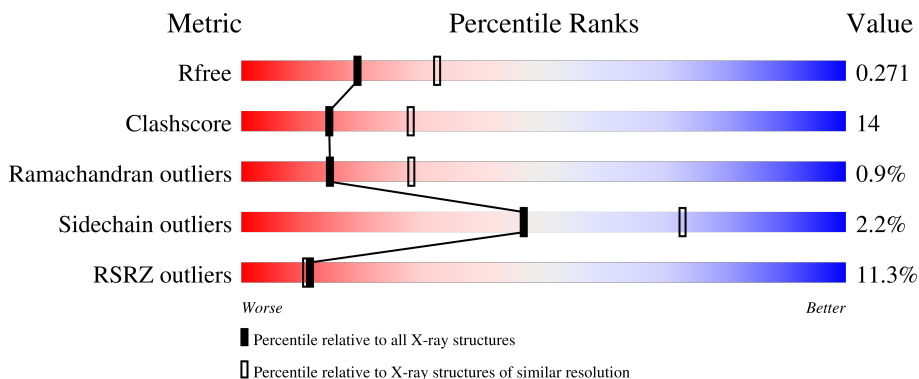
# 1 Overall quality at a glance

The following experimental techniques were used to determine the structure:

*X-RAY DIFFRACTION*

The reported resolution of this entry is 2.50 Å.

Percentile scores (ranging between 0-100) for global validation metrics of the entry are shown in the following graphic. The table shows the number of entries on which the scores are based.



Metric	Whole archive (#Entries)	Similar resolution (#Entries, resolution range(Å))
$R_{free}$	164625	5504 (2.50-2.50)
Clashscore	180529	6282 (2.50-2.50)
Ramachandran outliers	177936	6191 (2.50-2.50)
Sidechain outliers	177891	6193 (2.50-2.50)
RSRZ outliers	164620	5504 (2.50-2.50)

The table below summarises the geometric issues observed across the polymeric chains and their fit to the electron density. The red, orange, yellow and green segments of the lower bar indicate the fraction of residues that contain outliers for  $\geq 3$ , 2, 1 and 0 types of geometric quality criteria respectively. A grey segment represents the fraction of residues that are not modelled. The numeric value for each fraction is indicated below the corresponding segment, with a dot representing fractions  $\leq 5\%$ . The upper red bar (where present) indicates the fraction of residues that have poor fit to the electron density. The numeric value is given above the bar.

Mol	Chain	Length	Quality of chain
1	A	219	
2	B	212	
3	C	102	

The following table lists non-polymeric compounds, carbohydrate monomers and non-standard residues in protein, DNA, RNA chains that are outliers for geometric or electron-density-fit criteria:

Mol	Type	Chain	Res	Chirality	Geometry	Clashes	Electron density
4	MTN	C	201	-	-	-	X

## 2 Entry composition

There are 6 unique types of molecules in this entry. The entry contains 4074 atoms, of which 0 are hydrogens and 0 are deuteriums.

In the tables below, the ZeroOcc column contains the number of atoms modelled with zero occupancy, the AltConf column contains the number of residues with at least one atom in alternate conformation and the Trace column contains the number of residues modelled with at most 2 atoms.

- Molecule 1 is a protein called antibody Fab fragment heavy chain.

Mol	Chain	Residues	Atoms					ZeroOcc	AltConf	Trace
			Total	C	N	O	S			
1	A	219	1648	1042	275	325	6	0	0	0

- Molecule 2 is a protein called antibody Fab fragment light chain.

Mol	Chain	Residues	Atoms					ZeroOcc	AltConf	Trace
			Total	C	N	O	S			
2	B	212	1649	1023	283	338	5	0	0	0

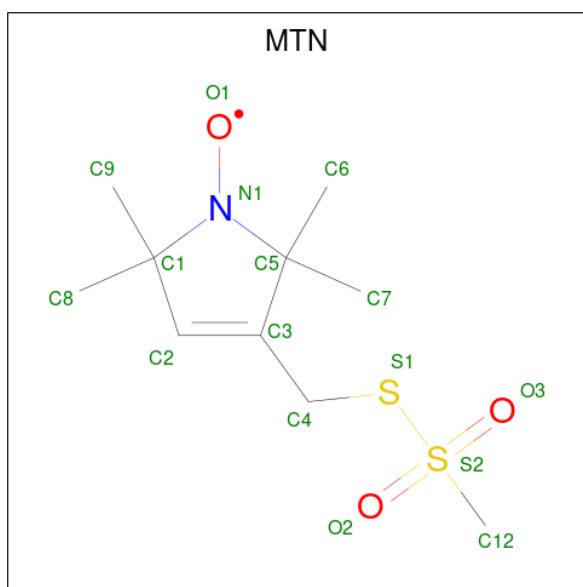
- Molecule 3 is a protein called Voltage-gated potassium channel.

Mol	Chain	Residues	Atoms					ZeroOcc	AltConf	Trace
			Total	C	N	O	S			
3	C	102	756	495	129	130	2	0	0	0

There is a discrepancy between the modelled and reference sequences:

Chain	Residue	Modelled	Actual	Comment	Reference
C	82	CYS	TYR	engineered mutation	UNP P0A334

- Molecule 4 is S-[(1-oxyl-2,2,5,5-tetramethyl-2,5-dihydro-1H-pyrrol-3-yl)methyl] methanesulfonothioate (three-letter code: MTN) (formula: C<sub>10</sub>H<sub>18</sub>NO<sub>3</sub>S<sub>2</sub>).



Mol	Chain	Residues	Atoms					ZeroOcc	AltConf
			Total	C	N	O	S		
4	C	1	12	9	1	1	1	0	0

- Molecule 5 is POTASSIUM ION (three-letter code: K) (formula: K).

Mol	Chain	Residues	Atoms		ZeroOcc	AltConf
			Total	K		
5	C	5	5	5	0	0

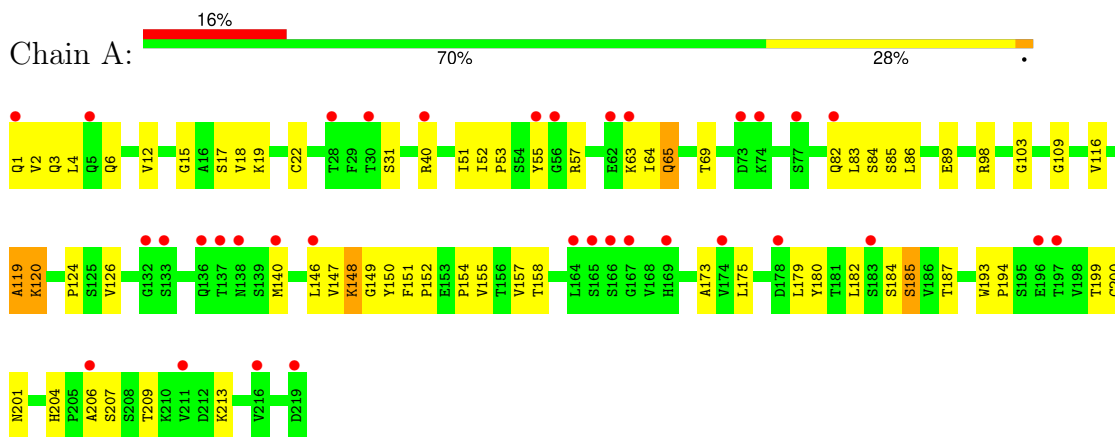
- Molecule 6 is water.

Mol	Chain	Residues	Atoms		ZeroOcc	AltConf
			Total	O		
6	C	4	4	4	0	0

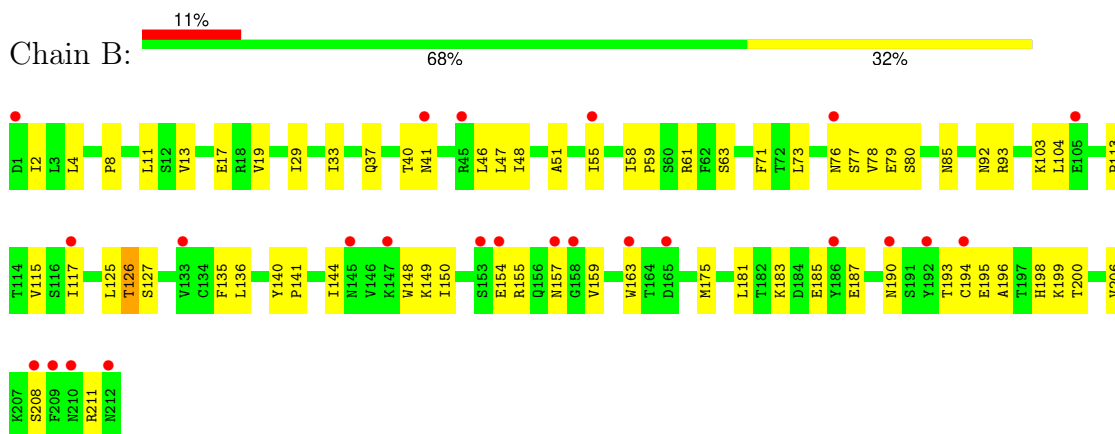
### 3 Residue-property plots [i](#)

These plots are drawn for all protein, RNA, DNA and oligosaccharide chains in the entry. The first graphic for a chain summarises the proportions of the various outlier classes displayed in the second graphic. The second graphic shows the sequence view annotated by issues in geometry and electron density. Residues are color-coded according to the number of geometric quality criteria for which they contain at least one outlier: green = 0, yellow = 1, orange = 2 and red = 3 or more. A red dot above a residue indicates a poor fit to the electron density ( $RSRZ > 2$ ). Stretches of 2 or more consecutive residues without any outlier are shown as a green connector. Residues present in the sample, but not in the model, are shown in grey.

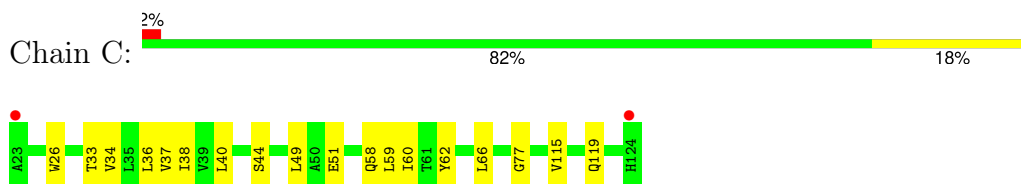
- Molecule 1: antibody Fab fragment heavy chain



- Molecule 2: antibody Fab fragment light chain



- Molecule 3: Voltage-gated potassium channel



## 4 Data and refinement statistics i

Property	Value	Source
Space group	I 4	Depositor
Cell constants a, b, c, $\alpha$ , $\beta$ , $\gamma$	155.73Å 155.73Å 76.10Å 90.00° 90.00° 90.00°	Depositor
Resolution (Å)	40.00 – 2.50 40.00 – 2.50	Depositor EDS
% Data completeness (in resolution range)	(Not available) (40.00-2.50) 92.8 (40.00-2.50)	Depositor EDS
$R_{merge}$	(Not available)	Depositor
$R_{sym}$	(Not available)	Depositor
$\langle I/\sigma(I) \rangle$ <sup>1</sup>	0.50 (at 1.87Å)	Xtrriage
Refinement program	CNS	Depositor
R, $R_{free}$	0.246 , 0.285 0.235 , 0.271	Depositor DCC
$R_{free}$ test set	2991 reflections (9.79%)	wwPDB-VP
Wilson B-factor (Å <sup>2</sup> )	25.8	Xtrriage
Anisotropy	0.520	Xtrriage
Bulk solvent $k_{sol}$ (e/Å <sup>3</sup> ), $B_{sol}$ (Å <sup>2</sup> )	0.30 , 33.8	EDS
L-test for twinning <sup>2</sup>	$\langle  L  \rangle = 0.49$ , $\langle L^2 \rangle = 0.32$	Xtrriage
Estimated twinning fraction	0.027 for -k,-h,-l	Xtrriage
$F_o, F_c$ correlation	0.91	EDS
Total number of atoms	4074	wwPDB-VP
Average B, all atoms (Å <sup>2</sup> )	46.0	wwPDB-VP

Xtrriage's analysis on translational NCS is as follows: *The largest off-origin peak in the Patterson function is 3.51% of the height of the origin peak. No significant pseudotranslation is detected.*

<sup>1</sup>Intensities estimated from amplitudes.

<sup>2</sup>Theoretical values of  $\langle |L| \rangle$ ,  $\langle L^2 \rangle$  for acentric reflections are 0.5, 0.333 respectively for untwinned datasets, and 0.375, 0.2 for perfectly twinned datasets.

## 5 Model quality [i](#)

### 5.1 Standard geometry [i](#)

Bond lengths and bond angles in the following residue types are not validated in this section: MTN, K

The Z score for a bond length (or angle) is the number of standard deviations the observed value is removed from the expected value. A bond length (or angle) with  $|Z| > 5$  is considered an outlier worth inspection. RMSZ is the root-mean-square of all Z scores of the bond lengths (or angles).

Mol	Chain	Bond lengths		Bond angles	
		RMSZ	# Z  >5	RMSZ	# Z  >5
1	A	0.36	0/1692	0.64	1/2312 (0.0%)
2	B	0.39	0/1686	0.64	0/2287
3	C	0.47	0/774	0.73	2/1063 (0.2%)
All	All	0.39	0/4152	0.66	3/5662 (0.1%)

There are no bond length outliers.

All (3) bond angle outliers are listed below:

Mol	Chain	Res	Type	Atoms	Z	Observed(°)	Ideal(°)
3	C	77	GLY	N-CA-C	5.67	127.27	113.10
3	C	60	ILE	N-CA-C	5.47	125.77	111.00
1	A	103	GLY	N-CA-C	5.38	126.56	113.10

There are no chirality outliers.

There are no planarity outliers.

### 5.2 Too-close contacts [i](#)

In the following table, the Non-H and H(model) columns list the number of non-hydrogen atoms and hydrogen atoms in the chain respectively. The H(added) column lists the number of hydrogen atoms added and optimized by MolProbity. The Clashes column lists the number of clashes within the asymmetric unit, whereas Symm-Clashes lists symmetry-related clashes.

Mol	Chain	Non-H	H(model)	H(added)	Clashes	Symm-Clashes
1	A	1648	0	1616	48	0
2	B	1649	0	1576	57	0
3	C	756	0	770	11	0
4	C	12	0	15	0	0
5	C	5	0	0	0	0

*Continued on next page...*



*Continued from previous page...*

Mol	Chain	Non-H	H(model)	H(added)	Clashes	Symm-Clashes
6	C	4	0	0	0	0
All	All	4074	0	3977	111	0

The all-atom clashscore is defined as the number of clashes found per 1000 atoms (including hydrogen atoms). The all-atom clashscore for this structure is 14.

All (111) close contacts within the same asymmetric unit are listed below, sorted by their clash magnitude.

Atom-1	Atom-2	Interatomic distance (Å)	Clash overlap (Å)
2:B:55:ILE:HB	2:B:58:ILE:HD12	1.57	0.85
1:A:65:GLN:NE2	1:A:65:GLN:H	1.80	0.78
2:B:85:ASN:HD21	2:B:103:LYS:HD3	1.50	0.77
1:A:65:GLN:H	1:A:65:GLN:HE21	1.32	0.75
2:B:85:ASN:ND2	2:B:103:LYS:HD3	2.01	0.75
2:B:47:LEU:O	2:B:48:ILE:HD12	1.90	0.70
1:A:65:GLN:HE21	1:A:65:GLN:N	1.90	0.70
2:B:8:PRO:HG2	2:B:11:LEU:HD13	1.74	0.69
2:B:195:GLU:HG2	2:B:206:VAL:HG12	1.73	0.68
1:A:83:LEU:HB3	1:A:86:LEU:HD21	1.75	0.67
2:B:183:LYS:O	2:B:187:GLU:HG2	1.94	0.67
1:A:119:ALA:HB3	1:A:151:PHE:CE2	2.31	0.65
2:B:136:LEU:HD11	2:B:196:ALA:HB2	1.78	0.65
1:A:207:SER:O	1:A:209:THR:HG23	1.97	0.64
3:C:33:THR:O	3:C:37:VAL:HG23	1.99	0.63
1:A:64:ILE:HD12	1:A:64:ILE:O	2.01	0.61
1:A:6:GLN:HE21	1:A:109:GLY:HA3	1.65	0.61
1:A:124:PRO:HB3	1:A:150:TYR:HB3	1.81	0.61
3:C:51:GLU:HG3	3:C:59:LEU:HB3	1.82	0.61
3:C:44:SER:OG	3:C:66:LEU:HA	2.00	0.60
2:B:47:LEU:HA	2:B:58:ILE:HD13	1.83	0.60
2:B:33:ILE:HG21	2:B:71:PHE:CD2	2.39	0.58
1:A:17:SER:HB2	1:A:84:SER:HA	1.85	0.58
2:B:13:VAL:CG2	2:B:17:GLU:HB3	2.34	0.58
1:A:31:SER:HB2	3:C:62:TYR:CE1	2.39	0.58
1:A:12:VAL:O	1:A:116:VAL:HA	2.03	0.57
2:B:126:THR:O	2:B:126:THR:HG22	2.05	0.57
1:A:148:LYS:HB2	1:A:148:LYS:NZ	2.19	0.57
1:A:17:SER:HB2	1:A:83:LEU:O	2.06	0.55
2:B:47:LEU:C	2:B:48:ILE:HD12	2.27	0.55
1:A:182:LEU:C	1:A:182:LEU:HD12	2.27	0.55
3:C:34:VAL:O	3:C:38:ILE:HG12	2.07	0.55

*Continued on next page...*

*Continued from previous page...*

Atom-1	Atom-2	Interatomic distance (Å)	Clash overlap (Å)
2:B:211:ARG:HH11	2:B:211:ARG:HG2	1.72	0.55
2:B:33:ILE:HG22	2:B:51:ALA:HB2	1.89	0.55
2:B:37:GLN:HB2	2:B:47:LEU:HD11	1.90	0.54
2:B:187:GLU:HA	2:B:187:GLU:OE2	2.08	0.54
2:B:78:VAL:HG12	2:B:79:GLU:N	2.23	0.54
1:A:199:THR:HG23	1:A:213:LYS:C	2.28	0.54
1:A:120:LYS:N	1:A:120:LYS:HE3	2.23	0.54
1:A:17:SER:CB	1:A:84:SER:HA	2.38	0.53
1:A:204:HIS:CE1	1:A:206:ALA:HB3	2.44	0.53
1:A:69:THR:HB	1:A:82:GLN:HB3	1.91	0.53
2:B:150:ILE:HD12	2:B:155:ARG:HH11	1.74	0.52
1:A:52:ILE:O	1:A:52:ILE:HG23	2.09	0.52
1:A:52:ILE:HG22	1:A:57:ARG:O	2.10	0.51
2:B:78:VAL:HG12	2:B:79:GLU:H	1.76	0.51
2:B:17:GLU:O	2:B:78:VAL:HG23	2.10	0.51
2:B:93:ARG:NH1	3:C:58:GLN:HG3	2.26	0.51
2:B:13:VAL:HG23	2:B:17:GLU:CD	2.31	0.50
2:B:76:ASN:O	2:B:77:SER:HB3	2.10	0.50
2:B:149:LYS:HB2	2:B:193:THR:OG1	2.11	0.49
1:A:193:TRP:CD1	1:A:194:PRO:HA	2.47	0.49
1:A:155:VAL:CG2	1:A:182:LEU:HD21	2.43	0.49
1:A:40:ARG:NH2	1:A:89:GLU:HB3	2.28	0.49
1:A:173:ALA:HA	1:A:182:LEU:HB3	1.94	0.49
2:B:29:ILE:HB	2:B:92:ASN:HB2	1.94	0.49
1:A:3:GLN:HE21	1:A:98:ARG:HH12	1.61	0.48
1:A:149:GLY:C	1:A:179:LEU:HD22	2.33	0.48
2:B:193:THR:HG22	2:B:208:SER:OG	2.13	0.48
2:B:140:TYR:HA	2:B:141:PRO:C	2.34	0.48
1:A:152:PRO:HD2	1:A:206:ALA:CB	2.43	0.48
1:A:15:GLY:O	1:A:85:SER:HA	2.13	0.47
2:B:78:VAL:HG11	2:B:104:LEU:HD21	1.96	0.47
1:A:3:GLN:HE21	1:A:98:ARG:NH1	2.12	0.47
1:A:124:PRO:HB2	1:A:147:VAL:HG13	1.97	0.47
2:B:13:VAL:HG22	2:B:17:GLU:HB3	1.97	0.47
1:A:1:GLN:OE1	1:A:1:GLN:N	2.45	0.47
1:A:51:ILE:HD12	1:A:57:ARG:O	2.14	0.47
1:A:185:SER:HB2	2:B:135:PHE:CE2	2.49	0.47
2:B:40:THR:O	2:B:41:ASN:HB2	2.14	0.47
2:B:92:ASN:ND2	2:B:93:ARG:HG3	2.30	0.46
2:B:93:ARG:HG2	2:B:93:ARG:HH11	1.79	0.46
1:A:18:VAL:HG22	1:A:19:LYS:N	2.31	0.46

*Continued on next page...*

Continued from previous page...

Atom-1	Atom-2	Interatomic distance (Å)	Clash overlap (Å)
2:B:125:LEU:C	2:B:127:SER:H	2.19	0.46
1:A:55:TYR:CD2	3:C:49:LEU:HD21	2.50	0.45
2:B:92:ASN:HD22	2:B:93:ARG:HG3	1.81	0.45
3:C:26:TRP:HA	3:C:26:TRP:CE3	2.51	0.45
2:B:157:ASN:O	2:B:159:VAL:HG23	2.17	0.45
2:B:193:THR:HG22	2:B:208:SER:CB	2.47	0.45
2:B:115:VAL:HA	2:B:135:PHE:O	2.17	0.45
1:A:51:ILE:O	1:A:53:PRO:HD3	2.17	0.44
1:A:173:ALA:HB2	1:A:182:LEU:HD23	1.99	0.44
2:B:61:ARG:HG3	2:B:76:ASN:O	2.16	0.44
2:B:140:TYR:HA	2:B:141:PRO:O	2.18	0.44
1:A:126:VAL:HA	1:A:146:LEU:O	2.18	0.44
1:A:175:LEU:HB2	1:A:180:TYR:CE2	2.53	0.44
3:C:115:VAL:O	3:C:119:GLN:HG2	2.17	0.44
1:A:140:MET:CE	1:A:187:THR:HG22	2.48	0.44
1:A:52:ILE:HG23	1:A:57:ARG:H	1.83	0.43
2:B:2:ILE:HD13	2:B:29:ILE:HG21	2.00	0.43
2:B:117:ILE:HD13	2:B:194:CYS:HB2	2.00	0.43
2:B:193:THR:HG22	2:B:208:SER:HB3	1.98	0.43
2:B:148:TRP:O	2:B:154:GLU:HA	2.19	0.43
2:B:93:ARG:HH12	3:C:58:GLN:HG3	1.84	0.42
1:A:157:VAL:HG11	1:A:184:SER:CB	2.48	0.42
2:B:198:HIS:CE1	2:B:200:THR:HG23	2.55	0.42
1:A:63:LYS:HD2	1:A:63:LYS:O	2.20	0.42
1:A:64:ILE:HD12	1:A:64:ILE:C	2.40	0.42
2:B:19:VAL:HG12	2:B:78:VAL:HG22	2.01	0.42
2:B:59:PRO:C	2:B:61:ARG:H	2.22	0.42
2:B:59:PRO:C	2:B:61:ARG:N	2.73	0.42
2:B:8:PRO:CG	2:B:11:LEU:HD13	2.47	0.41
2:B:163:TRP:CD1	2:B:175:MET:HG3	2.55	0.41
3:C:36:LEU:O	3:C:40:LEU:HG	2.20	0.41
1:A:4:LEU:HG	1:A:22:CYS:SG	2.61	0.41
2:B:63:SER:O	2:B:73:LEU:HD12	2.20	0.41
2:B:113:PRO:HG3	2:B:144:ILE:HD11	2.03	0.41
1:A:148:LYS:HB2	1:A:148:LYS:HZ2	1.83	0.41
2:B:181:LEU:HB3	2:B:185:GLU:HG2	2.01	0.41
2:B:183:LYS:HB3	2:B:183:LYS:NZ	2.36	0.41
2:B:46:LEU:O	2:B:58:ILE:HD11	2.20	0.41

There are no symmetry-related clashes.

## 5.3 Torsion angles [i](#)

### 5.3.1 Protein backbone [i](#)

In the following table, the Percentiles column shows the percent Ramachandran outliers of the chain as a percentile score with respect to all X-ray entries followed by that with respect to entries of similar resolution.

The Analysed column shows the number of residues for which the backbone conformation was analysed, and the total number of residues.

Mol	Chain	Analysed	Favoured	Allowed	Outliers	Percentiles	
1	A	217/219 (99%)	202 (93%)	13 (6%)	2 (1%)	14	28
2	B	210/212 (99%)	192 (91%)	15 (7%)	3 (1%)	9	17
3	C	100/102 (98%)	97 (97%)	3 (3%)	0	100	100
All	All	527/533 (99%)	491 (93%)	31 (6%)	5 (1%)	14	28

All (5) Ramachandran outliers are listed below:

Mol	Chain	Res	Type
1	A	2	VAL
2	B	80	SER
1	A	119	ALA
2	B	126	THR
2	B	199	LYS

### 5.3.2 Protein sidechains [i](#)

In the following table, the Percentiles column shows the percent sidechain outliers of the chain as a percentile score with respect to all X-ray entries followed by that with respect to entries of similar resolution.

The Analysed column shows the number of residues for which the sidechain conformation was analysed, and the total number of residues.

Mol	Chain	Analysed	Rotameric	Outliers	Percentiles	
1	A	185/185 (100%)	177 (96%)	8 (4%)	25	48
2	B	190/190 (100%)	188 (99%)	2 (1%)	70	87
3	C	72/74 (97%)	72 (100%)	0	100	100
All	All	447/449 (100%)	437 (98%)	10 (2%)	47	73

All (10) residues with a non-rotameric sidechain are listed below:

Mol	Chain	Res	Type
1	A	65	GLN
1	A	120	LYS
1	A	148	LYS
1	A	154	PRO
1	A	158	THR
1	A	185	SER
1	A	200	CYS
1	A	201	ASN
2	B	4	LEU
2	B	190	ASN

Sometimes sidechains can be flipped to improve hydrogen bonding and reduce clashes. All (9) such sidechains are listed below:

Mol	Chain	Res	Type
1	A	3	GLN
1	A	5	GLN
1	A	6	GLN
1	A	65	GLN
2	B	85	ASN
2	B	92	ASN
2	B	137	ASN
2	B	138	ASN
2	B	190	ASN

### 5.3.3 RNA [i](#)

There are no RNA molecules in this entry.

### 5.4 Non-standard residues in protein, DNA, RNA chains [i](#)

There are no non-standard protein/DNA/RNA residues in this entry.

### 5.5 Carbohydrates [i](#)

There are no oligosaccharides in this entry.

### 5.6 Ligand geometry [i](#)

Of 6 ligands modelled in this entry, 5 are monoatomic - leaving 1 for Mogul analysis.

In the following table, the Counts columns list the number of bonds (or angles) for which Mogul statistics could be retrieved, the number of bonds (or angles) that are observed in the model and the number of bonds (or angles) that are defined in the Chemical Component Dictionary. The Link column lists molecule types, if any, to which the group is linked. The Z score for a bond length (or angle) is the number of standard deviations the observed value is removed from the expected value. A bond length (or angle) with  $|Z| > 2$  is considered an outlier worth inspection. RMSZ is the root-mean-square of all Z scores of the bond lengths (or angles).

Mol	Type	Chain	Res	Link	Bond lengths			Bond angles		
					Counts	RMSZ	# Z  > 2	Counts	RMSZ	# Z  > 2
4	MTN	C	201	3	9,12,16	3.56	4 (44%)	11,20,27	2.84	7 (63%)

In the following table, the Chirals column lists the number of chiral outliers, the number of chiral centers analysed, the number of these observed in the model and the number defined in the Chemical Component Dictionary. Similar counts are reported in the Torsion and Rings columns. '-' means no outliers of that kind were identified.

Mol	Type	Chain	Res	Link	Chirals	Torsions	Rings
4	MTN	C	201	3	-	0/0/25/29	0/1/1/1

All (4) bond length outliers are listed below:

Mol	Chain	Res	Type	Atoms	Z	Observed(Å)	Ideal(Å)
4	C	201	MTN	C2-C3	8.26	1.41	1.32
4	C	201	MTN	C1-C2	4.69	1.56	1.50
4	C	201	MTN	O1-N1	-3.80	1.23	1.43
4	C	201	MTN	C4-S1	-2.34	1.78	1.82

All (7) bond angle outliers are listed below:

Mol	Chain	Res	Type	Atoms	Z	Observed(°)	Ideal(°)
4	C	201	MTN	C2-C1-N1	5.30	103.08	99.43
4	C	201	MTN	C9-C1-C2	-3.60	109.35	112.77
4	C	201	MTN	C8-C1-C2	-3.25	109.69	112.77
4	C	201	MTN	C9-C1-N1	2.98	113.47	110.05
4	C	201	MTN	C8-C1-N1	2.87	113.34	110.05
4	C	201	MTN	C9-C1-C8	-2.47	107.79	110.94
4	C	201	MTN	C6-C5-C3	-2.17	108.57	112.17

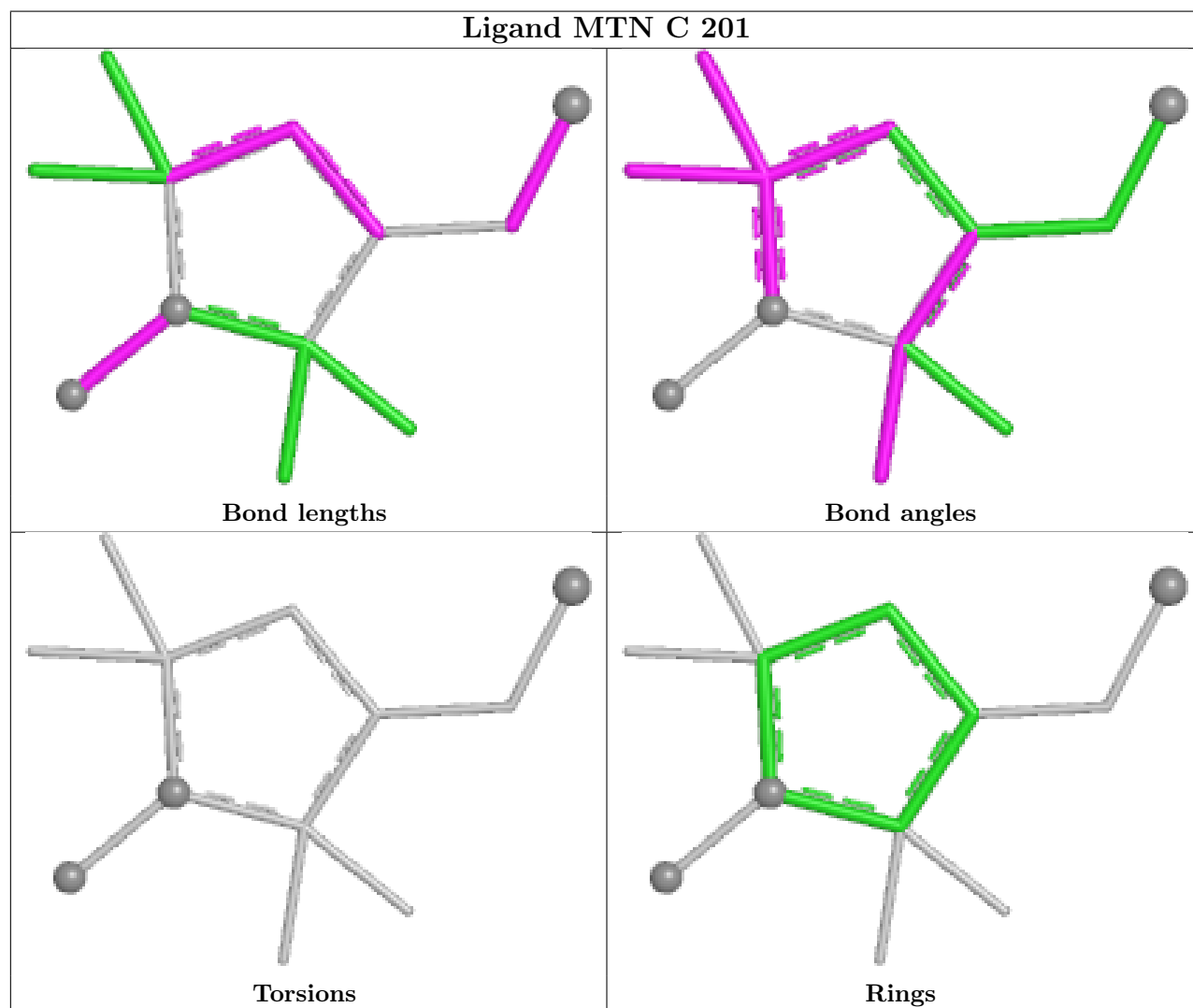
There are no chirality outliers.

There are no torsion outliers.

There are no ring outliers.

No monomer is involved in short contacts.

The following is a two-dimensional graphical depiction of Mogul quality analysis of bond lengths, bond angles, torsion angles, and ring geometry for all instances of the Ligand of Interest. In addition, ligands with molecular weight > 250 and outliers as shown on the validation Tables will also be included. For torsion angles, if less than 5% of the Mogul distribution of torsion angles is within 10 degrees of the torsion angle in question, then that torsion angle is considered an outlier. Any bond that is central to one or more torsion angles identified as an outlier by Mogul will be highlighted in the graph. For rings, the root-mean-square deviation (RMSD) between the ring in question and similar rings identified by Mogul is calculated over all ring torsion angles. If the average RMSD is greater than 60 degrees and the minimal RMSD between the ring in question and any Mogul-identified rings is also greater than 60 degrees, then that ring is considered an outlier. The outliers are highlighted in purple. The color gray indicates Mogul did not find sufficient equivalents in the CSD to analyse the geometry.



## 5.7 Other polymers [\(i\)](#)

There are no such residues in this entry.

## 5.8 Polymer linkage issues

There are no chain breaks in this entry.



## 6 Fit of model and data

### 6.1 Protein, DNA and RNA chains

In the following table, the column labelled ‘#RSRZ > 2’ contains the number (and percentage) of RSRZ outliers, followed by percent RSRZ outliers for the chain as percentile scores relative to all X-ray entries and entries of similar resolution. The OWAB column contains the minimum, median, 95<sup>th</sup> percentile and maximum values of the occupancy-weighted average B-factor per residue. The column labelled ‘Q < 0.9’ lists the number of (and percentage) of residues with an average occupancy less than 0.9.

Mol	Chain	Analysed	<RSRZ>	#RSRZ>2	OWAB(Å <sup>2</sup> )	Q<0.9
1	A	219/219 (100%)	1.10	34 (15%) <b>6</b> <b>6</b>	20, 54, 69, 80	0
2	B	212/212 (100%)	0.87	24 (11%) <b>11</b> <b>11</b>	18, 50, 73, 84	0
3	C	102/102 (100%)	0.22	2 (1%) 64 62	18, 27, 53, 63	0
All	All	533/533 (100%)	0.84	60 (11%) <b>11</b> <b>11</b>	18, 49, 70, 84	0

All (60) RSRZ outliers are listed below:

Mol	Chain	Res	Type	RSRZ
2	B	212	ASN	4.4
1	A	132	GLY	3.9
1	A	63	LYS	3.8
2	B	145	ASN	3.7
1	A	62	GLU	3.7
1	A	165	SER	3.6
1	A	219	ASP	3.4
1	A	136	GLN	3.4
2	B	165	ASP	3.4
1	A	169	HIS	3.2
2	B	157	ASN	3.2
1	A	1	GLN	3.1
1	A	74	LYS	3.0
1	A	55	TYR	3.0
2	B	210	ASN	2.9
2	B	208	SER	2.9
1	A	73	ASP	2.7
1	A	28	THR	2.7
2	B	117	ILE	2.7
1	A	216	VAL	2.6
2	B	190	ASN	2.6
1	A	211	VAL	2.6
2	B	147	LYS	2.6

*Continued on next page...*

*Continued from previous page...*

Mol	Chain	Res	Type	RSRZ
1	A	196	GLU	2.6
1	A	183	SER	2.5
1	A	137	THR	2.5
1	A	206	ALA	2.5
1	A	5	GLN	2.5
2	B	76	ASN	2.5
2	B	194	CYS	2.4
1	A	77	SER	2.4
1	A	133	SER	2.4
2	B	158	GLY	2.4
3	C	124	HIS	2.4
1	A	164	LEU	2.3
2	B	209	PHE	2.3
2	B	1	ASP	2.3
1	A	140	MET	2.2
1	A	82	GLN	2.2
3	C	23	ALA	2.2
1	A	167	GLY	2.2
2	B	153	SER	2.2
2	B	41	ASN	2.2
1	A	166	SER	2.2
2	B	45	ARG	2.2
1	A	178	ASP	2.2
2	B	154	GLU	2.2
2	B	163	TRP	2.2
1	A	56	GLY	2.2
1	A	138	ASN	2.2
2	B	105	GLU	2.1
2	B	186	TYR	2.1
1	A	197	THR	2.1
2	B	133	VAL	2.1
2	B	55	ILE	2.1
1	A	30	THR	2.1
1	A	40	ARG	2.0
1	A	146	LEU	2.0
1	A	174	VAL	2.0
2	B	192	TYR	2.0

## 6.2 Non-standard residues in protein, DNA, RNA chains

There are no non-standard protein/DNA/RNA residues in this entry.

### 6.3 Carbohydrates [i](#)

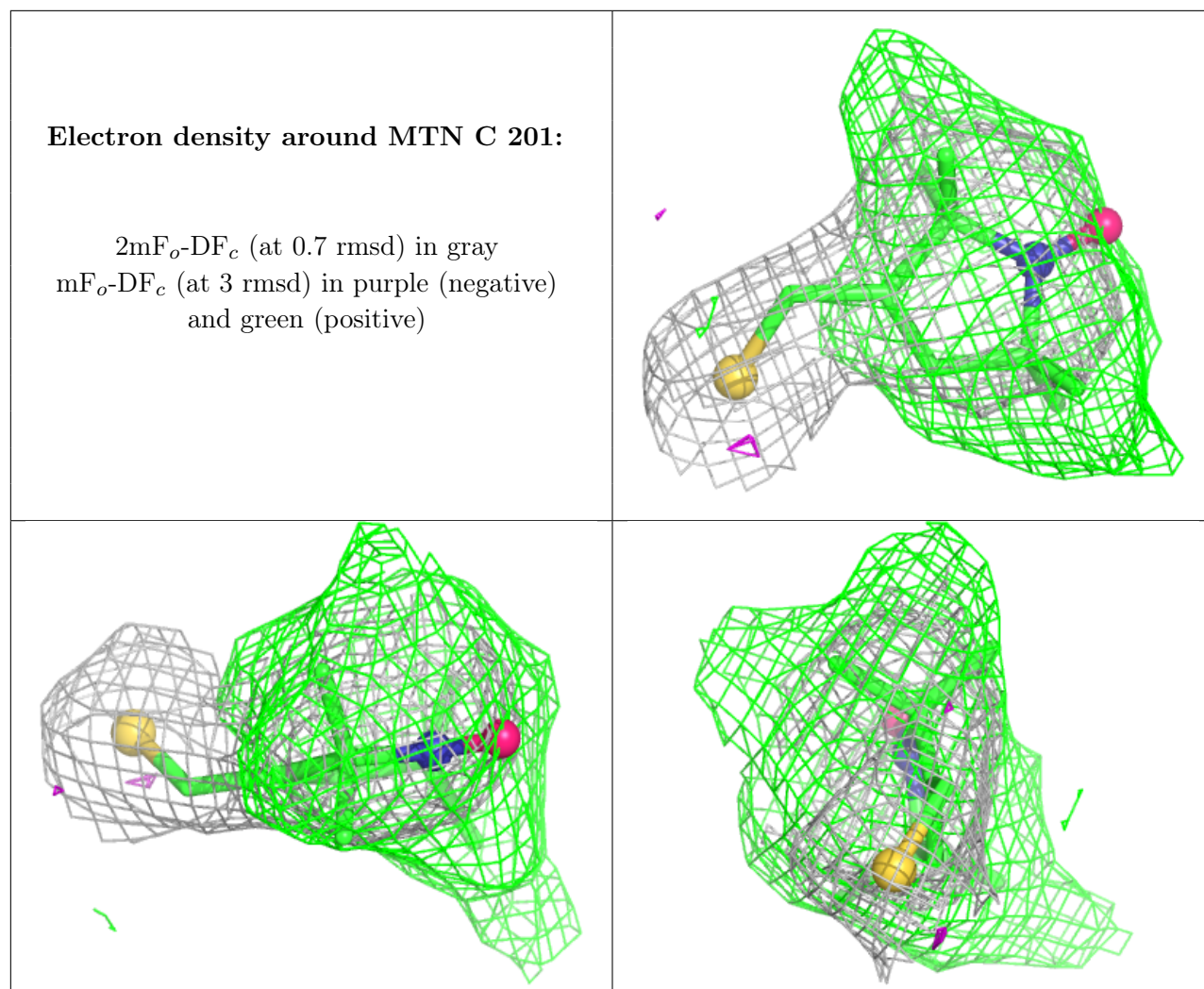
There are no monosaccharides in this entry.

### 6.4 Ligands [i](#)

In the following table, the Atoms column lists the number of modelled atoms in the group and the number defined in the chemical component dictionary. The B-factors column lists the minimum, median, 95<sup>th</sup> percentile and maximum values of B factors of atoms in the group. The column labelled 'Q< 0.9' lists the number of atoms with occupancy less than 0.9.

Mol	Type	Chain	Res	Atoms	RSCC	RSR	B-factors(Å <sup>2</sup> )	Q<0.9
4	MTN	C	201	12/16	0.75	0.44	34,37,37,37	12
5	K	C	202	1/1	0.90	0.08	27,27,27,27	1
5	K	C	205	1/1	0.96	0.05	20,20,20,20	1
5	K	C	204	1/1	0.99	0.14	32,32,32,32	1
5	K	C	203	1/1	0.99	0.17	33,33,33,33	1
5	K	C	206	1/1	1.00	0.04	33,33,33,33	1

The following is a graphical depiction of the model fit to experimental electron density of all instances of the Ligand of Interest. In addition, ligands with molecular weight > 250 and outliers as shown on the geometry validation Tables will also be included. Each fit is shown from different orientation to approximate a three-dimensional view.



## 6.5 Other polymers [\(i\)](#)

There are no such residues in this entry.