



Full wwPDB EM Map/Model Validation Report ⓘ

May 14, 2020 – 02:37 pm BST

PDB ID : 6SXO
EMDB ID : EMD-10344
Title : Cryo-EM structure of the human Ebp1-ribosome complex
Authors : Wild, K.; Aleksic, M.; Pfeffer, M.; Sinning, I.
Deposited on : 2019-09-26
Resolution : 3.30 Å(reported)

This is a Full wwPDB EM Map/Model Validation Report for a publicly released PDB entry.

We welcome your comments at validation@mail.wwpdb.org

A user guide is available at

<https://www.wwpdb.org/validation/2017/EMValidationReportHelp>

with specific help available everywhere you see the ⓘ symbol.

The following versions of software and data (see [references ⓘ](#)) were used in the production of this report:

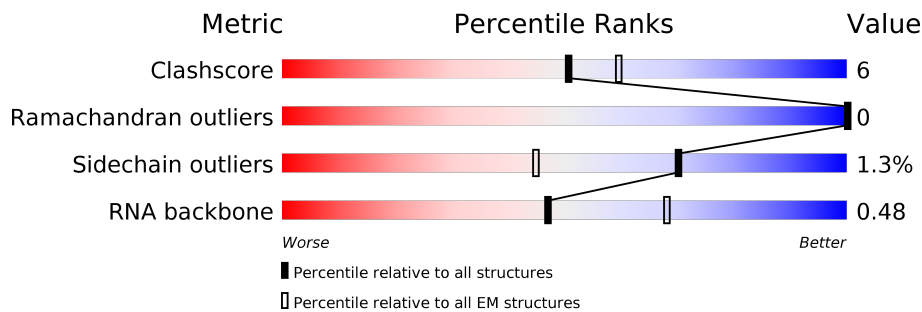
EMDB validation analysis : 0.0.0.dev33
MolProbity : 4.02b-467
Percentile statistics : 20191225.v01 (using entries in the PDB archive December 25th 2019)
Ideal geometry (proteins) : Engh & Huber (2001)
Ideal geometry (DNA, RNA) : Parkinson et al. (1996)
Validation Pipeline (wwPDB-VP) : 2.11

1 Overall quality at a glance i

The following experimental techniques were used to determine the structure:
ELECTRON MICROSCOPY

The reported resolution of this entry is 3.30 Å.

Percentile scores (ranging between 0-100) for global validation metrics of the entry are shown in the following graphic. The table shows the number of entries on which the scores are based.




Metric	Whole archive (#Entries)	EM structures (#Entries)
Clashscore	158937	4297
Ramachandran outliers	154571	4023
Sidechain outliers	154315	3826
RNA backbone	4643	859

The table below summarises the geometric issues observed across the polymeric chains and their fit to the map. The red, orange, yellow and green segments on the bar indicate the fraction of residues that contain outliers for ≥ 3 , 2, 1 and 0 types of geometric quality criteria respectively. A grey segment represents the fraction of residues that are not modelled. The numeric value for each fraction is indicated below the corresponding segment, with a dot representing fractions $\leq 5\%$. The upper red bar (where present) indicates the fraction of residues that have poor fit to the EM map (all atom inclusion $< 40\%$). The numeric value is given above the bar.

Mol	Chain	Length	Quality of chain
1	A	394	<div style="display: flex; align-items: center;"> <div style="width: 15%; height: 10px; background-color: red; margin-right: 5px;"></div> <div style="width: 77%; height: 10px; background-color: green; margin-right: 5px;"></div> <div style="width: 18%; height: 10px; background-color: yellow; margin-right: 5px;"></div> <div style="width: 5%; height: 10px; background-color: grey;"></div> </div>
2	Lh	123	<div style="display: flex; align-items: center;"> <div style="width: 98%; height: 10px; background-color: green; margin-right: 5px;"></div> <div style="width: 2%; height: 10px; background-color: grey;"></div> </div>
3	Lk	70	<div style="display: flex; align-items: center;"> <div style="width: 96%; height: 10px; background-color: green; margin-right: 5px;"></div> <div style="width: 4%; height: 10px; background-color: grey;"></div> </div>
4	LR	196	<div style="display: flex; align-items: center;"> <div style="width: 70%; height: 10px; background-color: green; margin-right: 5px;"></div> <div style="width: 7%; height: 10px; background-color: yellow; margin-right: 5px;"></div> <div style="width: 23%; height: 10px; background-color: grey;"></div> </div>
5	LX	156	<div style="display: flex; align-items: center;"> <div style="width: 71%; height: 10px; background-color: green; margin-right: 5px;"></div> <div style="width: 6%; height: 10px; background-color: yellow; margin-right: 5px;"></div> <div style="width: 23%; height: 10px; background-color: grey;"></div> </div>
6	LY	145	<div style="display: flex; align-items: center;"> <div style="width: 71%; height: 10px; background-color: green; margin-right: 5px;"></div> <div style="width: 20%; height: 10px; background-color: yellow; margin-right: 5px;"></div> <div style="width: 8%; height: 10px; background-color: grey;"></div> </div>
7	L5	5070	<div style="display: flex; align-items: center;"> <div style="width: 95%; height: 10px; background-color: grey; margin-right: 5px;"></div> </div>

Continued on next page...

Continued from previous page...

Mol	Chain	Length	Quality of chain
8	L8	157	 22% 13% 63%

2 Entry composition [i](#)

There are 8 unique types of molecules in this entry. The entry contains 14894 atoms, of which 0 are hydrogens and 0 are deuteriums.

In the tables below, the AltConf column contains the number of residues with at least one atom in alternate conformation and the Trace column contains the number of residues modelled with at most 2 atoms.

- Molecule 1 is a protein called Proliferation-associated protein 2G4.

Mol	Chain	Residues	Atoms					AltConf	Trace
			Total	C	N	O	S		
1	A	375	2931	1844	509	561	17	0	0

- Molecule 2 is a protein called 60S ribosomal protein L35.

Mol	Chain	Residues	Atoms					AltConf	Trace
			Total	C	N	O	S		
2	Lh	122	1015	641	205	168	1	0	0

- Molecule 3 is a protein called 60S ribosomal protein L38.

Mol	Chain	Residues	Atoms					AltConf	Trace
			Total	C	N	O	S		
3	Lk	69	569	366	103	99	1	0	0

- Molecule 4 is a protein called 60S ribosomal protein L19.

Mol	Chain	Residues	Atoms					AltConf	Trace
			Total	C	N	O	S		
4	LR	153	1281	799	276	197	9	0	0

- Molecule 5 is a protein called 60S ribosomal protein L23a.

Mol	Chain	Residues	Atoms					AltConf	Trace
			Total	C	N	O	S		
5	LX	120	985	630	185	169	1	0	0

- Molecule 6 is a protein called 60S ribosomal protein L26.

Mol	Chain	Residues	Atoms					AltConf	Trace
			Total	C	N	O	S		
6	LY	134	1115	700	226	186	3	0	0

- Molecule 7 is a RNA chain called 28S ribosomal RNA including ES27L-B (2839-3265).

Mol	Chain	Residues	Atoms					AltConf	Trace
			Total	C	N	O	P		
7	L5	268	5761	2560	1058	1875	268	0	0

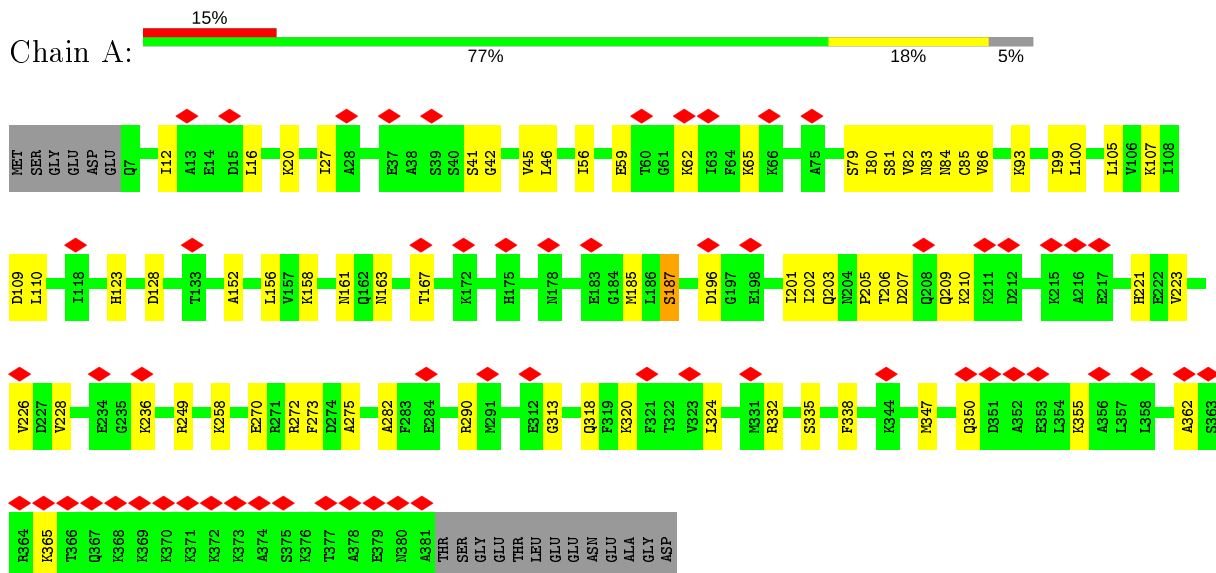
- Molecule 8 is a RNA chain called 5.8S ribosomal RNA.

Mol	Chain	Residues	Atoms					AltConf	Trace
			Total	C	N	O	P		
8	L8	58	1237	554	224	401	58	0	0

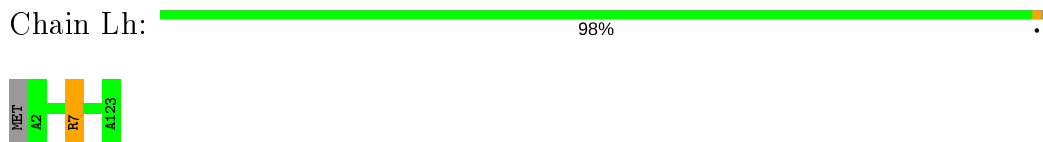
3 Residue-property plots [i](#)

These plots are drawn for all protein, RNA and DNA chains in the entry. The first graphic for a chain summarises the proportions of the various outlier classes displayed in the second graphic. The second graphic shows the sequence view annotated by issues in geometry and atom inclusion in map density. Residues are color-coded according to the number of geometric quality criteria for which they contain at least one outlier: green = 0, yellow = 1, orange = 2 and red = 3 or more. A red diamond above a residue indicates a poor fit to the EM map for this residue (all atom inclusion < 40%). Stretches of 2 or more consecutive residues without any outlier are shown as a green connector. Residues present in the sample, but not in the model, are shown in grey.

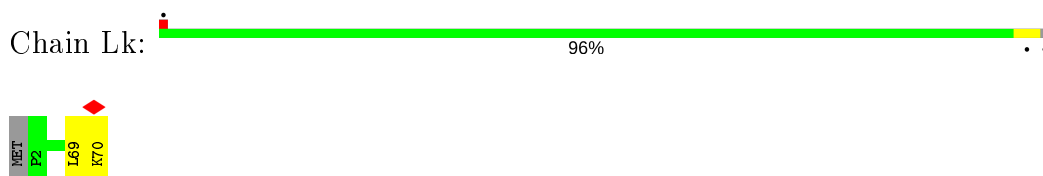
- Molecule 1: Proliferation-associated protein 2G4



- Molecule 2: 60S ribosomal protein L35



- Molecule 3: 60S ribosomal protein L38



- Molecule 4: 60S ribosomal protein L19



4 Experimental information

Property	Value	Source
EM reconstruction method	SINGLE PARTICLE	Depositor
Imposed symmetry	POINT, C1	Depositor
Number of particles used	34467	Depositor
Resolution determination method	FSC 0.143 CUT-OFF	Depositor
CTF correction method	PHASE FLIPPING AND AMPLITUDE CORRECTION	Depositor
Microscope	FEI TITAN KRIOS	Depositor
Voltage (kV)	300	Depositor
Electron dose ($e^-/\text{\AA}^2$)	38	Depositor
Minimum defocus (nm)	500	Depositor
Maximum defocus (nm)	3000	Depositor
Magnification	Not provided	Depositor
Image detector	GATAN K3 (6k x 4k)	Depositor
Maximum map value	0.107	Depositor
Minimum map value	-0.064	Depositor
Average map value	0.000	Depositor
Map value standard deviation	0.003	Depositor
Recommended contour level	0.01	Depositor
Map size (\AA)	547.84, 547.84, 547.84	Depositor
Map dimensions	512, 512, 512	Depositor
Map angles ($^\circ$)	90.0, 90.0, 90.0	Depositor
Pixel spacing (\AA)	1.07, 1.07, 1.07	Depositor

5 Model quality [i](#)

5.1 Standard geometry [i](#)

The Z score for a bond length (or angle) is the number of standard deviations the observed value is removed from the expected value. A bond length (or angle) with $|Z| > 5$ is considered an outlier worth inspection. RMSZ is the root-mean-square of all Z scores of the bond lengths (or angles).

Mol	Chain	Bond lengths		Bond angles	
		RMSZ	# Z >5	RMSZ	# Z >5
1	A	0.40	0/2978	0.63	0/4000
2	Lh	0.46	0/1023	0.78	3/1351 (0.2%)
3	Lk	0.44	0/575	0.64	0/761
4	LR	0.47	0/1297	0.67	1/1716 (0.1%)
5	LX	0.47	0/1002	0.60	0/1345
6	LY	0.52	0/1132	0.67	1/1504 (0.1%)
7	L5	0.83	0/6438	1.71	221/10034 (2.2%)
8	L8	1.01	0/1384	1.21	8/2154 (0.4%)
All	All	0.68	0/15829	1.28	234/22865 (1.0%)

Chiral center outliers are detected by calculating the chiral volume of a chiral center and verifying if the center is modelled as a planar moiety or with the opposite hand. A planarity outlier is detected by checking planarity of atoms in a peptide group, atoms in a mainchain group or atoms of a sidechain that are expected to be planar.

Mol	Chain	#Chirality outliers	#Planarity outliers
1	A	0	1

There are no bond length outliers.

All (234) bond angle outliers are listed below:

Mol	Chain	Res	Type	Atoms	Z	Observed(°)	Ideal(°)
7	L5	3277	C	C5-C6-N1	12.62	127.31	121.00
7	L5	3581	C	O5'-P-OP1	12.28	125.44	110.70
7	L5	3580	G	O5'-P-OP2	-12.09	94.82	105.70
7	L5	3293	U	O5'-P-OP1	11.51	124.51	110.70
2	Lh	7	ARG	NE-CZ-NH2	11.50	126.05	120.30
7	L5	2936	C	C5-C6-N1	11.35	126.67	121.00
7	L5	2936	C	C6-N1-C2	-10.12	116.25	120.30
7	L5	3583	U	P-O3'-C3'	9.84	131.51	119.70
7	L5	3260	C	C5-C6-N1	9.72	125.86	121.00
7	L5	3594	C	N1-C2-O2	9.53	124.61	118.90

Continued on next page...

Continued from previous page...

Mol	Chain	Res	Type	Atoms	Z	Observed(°)	Ideal(°)
2	Lh	7	ARG	NE-CZ-NH1	-9.15	115.72	120.30
7	L5	3256	G	P-O3'-C3'	9.03	130.53	119.70
7	L5	3265	C	C6-N1-C2	-8.91	116.73	120.30
8	L8	64	U	N3-C2-O2	-8.88	115.99	122.20
7	L5	3293	U	O5'-P-OP2	-8.79	97.79	105.70
7	L5	3277	C	C6-N1-C2	-8.45	116.92	120.30
7	L5	3273	C	C5-C6-N1	8.44	125.22	121.00
7	L5	3260	C	N1-C2-O2	8.39	123.93	118.90
7	L5	3283	G	P-O3'-C3'	8.35	129.72	119.70
7	L5	3281	C	N1-C2-O2	8.22	123.83	118.90
7	L5	2938	C	C6-N1-C2	-8.20	117.02	120.30
7	L5	3578	U	P-O3'-C3'	8.20	129.53	119.70
7	L5	3261	C	N1-C2-O2	8.19	123.81	118.90
7	L5	2931	C	N1-C2-O2	8.11	123.76	118.90
7	L5	3594	C	N3-C2-O2	-8.09	116.23	121.90
7	L5	3295	G	P-O5'-C5'	7.96	133.63	120.90
7	L5	3294	C	O3'-P-O5'	7.93	119.07	104.00
7	L5	2938	C	N1-C2-O2	7.91	123.64	118.90
7	L5	3576	C	N1-C2-O2	7.89	123.63	118.90
7	L5	3283	G	C8-N9-C4	-7.77	103.29	106.40
7	L5	3574	C	C6-N1-C2	-7.75	117.20	120.30
7	L5	2709	C	C6-N1-C2	-7.69	117.22	120.30
7	L5	3243	C	C5-C6-N1	7.67	124.84	121.00
7	L5	3579	C	P-O3'-C3'	7.66	128.90	119.70
7	L5	3259	C	C5-C6-N1	7.65	124.82	121.00
7	L5	3261	C	C5-C6-N1	7.63	124.81	121.00
7	L5	2940	C	N1-C2-O2	7.60	123.46	118.90
7	L5	3278	C	C5-C6-N1	7.59	124.80	121.00
7	L5	3264	C	N1-C2-O2	7.52	123.41	118.90
7	L5	3277	C	C2-N1-C1'	7.51	127.07	118.80
7	L5	3260	C	C6-N1-C2	-7.46	117.31	120.30
7	L5	2712	G	C6-C5-N7	-7.44	125.94	130.40
7	L5	3290	G	N3-C4-N9	7.44	130.46	126.00
7	L5	3598	C	C2-N1-C1'	7.42	126.96	118.80
7	L5	3259	C	N1-C2-O2	7.41	123.35	118.90
7	L5	3261	C	C6-N1-C2	-7.40	117.34	120.30
7	L5	2905	C	C6-N1-C2	-7.37	117.35	120.30
7	L5	3574	C	N3-C2-O2	-7.31	116.78	121.90
7	L5	2912	G	C6-C5-N7	-7.28	126.03	130.40
7	L5	2712	G	N3-C4-N9	7.27	130.36	126.00
7	L5	3295	G	OP1-P-O3'	7.20	121.05	105.20
7	L5	3263	U	C5-C6-N1	7.19	126.29	122.70

Continued on next page...

Continued from previous page...

Mol	Chain	Res	Type	Atoms	Z	Observed(°)	Ideal(°)
7	L5	2932	U	N3-C2-O2	-7.16	117.19	122.20
7	L5	2926	C	C5-C6-N1	7.14	124.57	121.00
7	L5	2929	G	C6-C5-N7	-7.13	126.12	130.40
7	L5	2909	C	C6-N1-C2	-7.12	117.45	120.30
7	L5	2709	C	N1-C2-O2	7.11	123.17	118.90
7	L5	3293	U	OP1-P-OP2	-7.10	108.95	119.60
7	L5	3259	C	C2-N1-C1'	7.09	126.60	118.80
7	L5	3276	C	C6-N1-C2	-7.08	117.47	120.30
7	L5	3253	G	O5'-P-OP1	-7.06	99.35	105.70
7	L5	2916	G	C4-C5-N7	7.05	113.62	110.80
7	L5	3278	C	C6-N1-C2	-7.05	117.48	120.30
7	L5	2929	G	N3-C4-N9	7.04	130.23	126.00
7	L5	2916	G	C6-C5-N7	-7.04	126.17	130.40
7	L5	3259	C	C6-N1-C2	-7.04	117.48	120.30
7	L5	2709	C	C2-N1-C1'	7.03	126.53	118.80
7	L5	2936	C	N1-C2-O2	7.02	123.11	118.90
7	L5	3260	C	C2-N1-C1'	7.02	126.52	118.80
7	L5	3241	C	C2-N1-C1'	6.99	126.49	118.80
7	L5	2905	C	C5-C6-N1	6.99	124.49	121.00
7	L5	2931	C	C2-N1-C1'	6.93	126.43	118.80
7	L5	2912	G	N7-C8-N9	6.92	116.56	113.10
7	L5	3236	G	P-O3'-C3'	6.89	127.97	119.70
7	L5	3265	C	C5-C6-N1	6.85	124.42	121.00
7	L5	3294	C	P-O3'-C3'	6.79	127.85	119.70
7	L5	3277	C	N1-C2-O2	6.79	122.97	118.90
7	L5	2712	G	C4-N9-C1'	6.73	135.25	126.50
7	L5	2903	G	P-O3'-C3'	6.73	127.78	119.70
7	L5	2916	G	N9-C4-C5	-6.73	102.71	105.40
7	L5	2909	C	C5-C6-N1	6.73	124.36	121.00
7	L5	3264	C	C2-N1-C1'	6.70	126.17	118.80
7	L5	3590	G	N3-C4-C5	-6.66	125.27	128.60
7	L5	2927	G	N3-C4-N9	6.65	129.99	126.00
7	L5	2926	C	N1-C2-O2	6.63	122.88	118.90
7	L5	2528	G	C4-N9-C1'	6.62	135.11	126.50
7	L5	3281	C	C6-N1-C2	-6.60	117.66	120.30
7	L5	3579	C	OP2-P-O3'	6.55	119.62	105.20
7	L5	3571	C	C6-N1-C2	-6.55	117.68	120.30
7	L5	2926	C	C6-N1-C2	-6.53	117.69	120.30
7	L5	2938	C	N3-C2-O2	-6.52	117.33	121.90
7	L5	3243	C	N1-C2-O2	6.52	122.81	118.90
7	L5	3594	C	C6-N1-C2	-6.50	117.70	120.30
7	L5	2709	C	N3-C2-O2	-6.49	117.36	121.90

Continued on next page...

Continued from previous page...

Mol	Chain	Res	Type	Atoms	Z	Observed(°)	Ideal(°)
7	L5	2915	G	C6-C5-N7	-6.48	126.51	130.40
7	L5	2924	A	P-O3'-C3'	6.48	127.48	119.70
7	L5	2938	C	C5-C6-N1	6.44	124.22	121.00
7	L5	2927	G	P-O3'-C3'	6.43	127.42	119.70
7	L5	3596	A	O4'-C1'-N9	6.43	113.35	108.20
8	L8	64	U	N1-C2-O2	6.43	127.30	122.80
7	L5	2930	G	P-O3'-C3'	6.42	127.41	119.70
7	L5	2943	C	C5'-C4'-O4'	6.42	116.81	109.10
7	L5	2916	G	N3-C4-N9	6.41	129.84	126.00
7	L5	2932	U	C2-N1-C1'	6.40	125.38	117.70
7	L5	3246	G	C6-C5-N7	-6.40	126.56	130.40
7	L5	2932	U	N1-C2-O2	6.39	127.28	122.80
7	L5	2928	G	O5'-P-OP1	6.35	118.32	110.70
7	L5	3241	C	C6-N1-C1'	-6.34	113.19	120.80
7	L5	3290	G	C6-C5-N7	-6.34	126.59	130.40
7	L5	3593	C	N3-C2-O2	-6.34	117.46	121.90
7	L5	3281	C	N3-C2-O2	-6.34	117.46	121.90
6	LY	119	LEU	CA-CB-CG	6.33	129.87	115.30
8	L8	51	U	N3-C2-O2	-6.31	117.78	122.20
7	L5	3593	C	N1-C2-O2	6.24	122.64	118.90
7	L5	3276	C	C5-C6-N1	6.24	124.12	121.00
7	L5	2921	C	C5-C6-N1	6.22	124.11	121.00
7	L5	2951	G	C4-C5-N7	6.20	113.28	110.80
7	L5	3284	C	C6-N1-C2	-6.18	117.83	120.30
7	L5	2945	C	C6-N1-C2	-6.16	117.84	120.30
7	L5	3246	G	N3-C4-N9	6.14	129.69	126.00
7	L5	2912	G	N3-C4-N9	6.12	129.67	126.00
7	L5	3594	C	C2-N1-C1'	6.09	125.50	118.80
7	L5	3583	U	O3'-P-O5'	6.09	115.57	104.00
7	L5	3264	C	C5-C6-N1	6.08	124.04	121.00
7	L5	3261	C	N3-C2-O2	-6.08	117.64	121.90
7	L5	3252	A	OP1-P-O3'	6.08	118.58	105.20
7	L5	3282	U	P-O3'-C3'	6.06	126.98	119.70
7	L5	406	C	P-O3'-C3'	6.05	126.96	119.70
7	L5	2936	C	C2-N3-C4	6.03	122.92	119.90
8	L8	54	C	N1-C2-O2	6.03	122.52	118.90
7	L5	2942	C	C6-N1-C2	-6.03	117.89	120.30
7	L5	2709	C	C5-C6-N1	6.03	124.01	121.00
8	L8	81	C	C6-N1-C2	-6.02	117.89	120.30
7	L5	3266	C	C2-N1-C1'	6.01	125.42	118.80
7	L5	2916	G	C5-C6-O6	-6.00	125.00	128.60
7	L5	2953	C	C6-N1-C2	-5.99	117.90	120.30

Continued on next page...

Continued from previous page...

Mol	Chain	Res	Type	Atoms	Z	Observed(°)	Ideal(°)
7	L5	3598	C	N1-C2-O2	5.99	122.50	118.90
7	L5	2921	C	C6-N1-C2	-5.99	117.90	120.30
7	L5	3281	C	C5-C6-N1	5.99	124.00	121.00
7	L5	2710	C	C6-N1-C2	-5.97	117.91	120.30
7	L5	2916	G	N1-C6-O6	5.97	123.48	119.90
7	L5	2912	G	C4-C5-N7	5.97	113.19	110.80
7	L5	2904	U	C5-C6-N1	5.96	125.68	122.70
7	L5	2707	U	C2-N1-C1'	5.96	124.85	117.70
8	L8	51	U	N1-C2-O2	5.95	126.97	122.80
7	L5	3290	G	N3-C4-C5	-5.94	125.63	128.60
7	L5	3296	C	C6-N1-C2	-5.91	117.94	120.30
7	L5	3571	C	C5-C6-N1	5.90	123.95	121.00
7	L5	3277	C	N3-C4-N4	5.89	122.12	118.00
7	L5	3277	C	C2-N3-C4	5.88	122.84	119.90
7	L5	2948	C	C5-C6-N1	5.88	123.94	121.00
7	L5	3588	C	C6-N1-C2	-5.86	117.95	120.30
7	L5	2940	C	N3-C2-O2	-5.84	117.81	121.90
7	L5	2528	G	C8-N9-C1'	-5.83	119.42	127.00
7	L5	3576	C	N3-C2-O2	-5.83	117.82	121.90
7	L5	2927	G	N3-C4-C5	-5.83	125.69	128.60
7	L5	3591	C	C6-N1-C2	-5.81	117.98	120.30
7	L5	2942	C	C5-C6-N1	5.74	123.87	121.00
7	L5	2943	C	C5-C6-N1	5.71	123.86	121.00
7	L5	2902	G	OP2-P-O3'	5.71	117.76	105.20
7	L5	3264	C	C6-N1-C2	-5.71	118.02	120.30
7	L5	2903	G	O5'-P-OP2	-5.69	100.58	105.70
7	L5	3246	G	N9-C4-C5	-5.69	103.13	105.40
7	L5	2929	G	C4-C5-N7	5.68	113.07	110.80
7	L5	2712	G	C8-N9-C1'	-5.67	119.63	127.00
7	L5	3581	C	OP1-P-OP2	-5.67	111.10	119.60
7	L5	3255	C	N3-C2-O2	-5.66	117.94	121.90
7	L5	2712	G	N3-C4-C5	-5.65	125.77	128.60
7	L5	2929	G	C4-N9-C1'	5.63	133.82	126.50
7	L5	2931	C	C5-C6-N1	5.62	123.81	121.00
7	L5	3291	C	C6-N1-C2	-5.62	118.05	120.30
7	L5	2931	C	N3-C2-O2	-5.61	117.97	121.90
7	L5	391	U	N3-C2-O2	-5.60	118.28	122.20
7	L5	3577	C	C5-C6-N1	5.58	123.79	121.00
7	L5	3246	G	C4-C5-N7	5.56	113.02	110.80
7	L5	3598	C	C6-N1-C1'	-5.52	114.17	120.80
7	L5	3606	U	C2-N1-C1'	5.51	124.32	117.70
7	L5	2912	G	N3-C2-N2	5.50	123.75	119.90

Continued on next page...

Continued from previous page...

Mol	Chain	Res	Type	Atoms	Z	Observed(°)	Ideal(°)
7	L5	2942	C	N1-C1'-C2'	-5.50	105.95	112.00
7	L5	3587	C	C5-C6-N1	5.48	123.74	121.00
7	L5	386	A	C2-N3-C4	5.48	113.34	110.60
7	L5	3272	U	P-O3'-C3'	5.47	126.26	119.70
7	L5	3295	G	P-O3'-C3'	5.47	126.26	119.70
7	L5	3252	A	O5'-P-OP1	5.46	117.25	110.70
7	L5	3266	C	N1-C2-O2	5.46	122.18	118.90
7	L5	3581	C	C6-N1-C2	-5.45	118.12	120.30
7	L5	2943	C	C6-N1-C2	-5.44	118.12	120.30
7	L5	3258	G	N3-C4-N9	5.44	129.26	126.00
8	L8	57	C	C6-N1-C2	-5.43	118.13	120.30
7	L5	2708	U	O4'-C1'-N1	-5.42	103.86	108.20
7	L5	3286	G	N9-C4-C5	5.40	107.56	105.40
7	L5	2528	G	N3-C4-N9	5.37	129.22	126.00
7	L5	3576	C	C2-N1-C1'	5.35	124.69	118.80
7	L5	2932	U	C6-N1-C2	-5.34	117.79	121.00
7	L5	3284	C	O4'-C1'-N1	5.31	112.45	108.20
7	L5	3273	C	C6-N1-C2	-5.31	118.18	120.30
7	L5	2940	C	C2-N1-C1'	5.30	124.63	118.80
7	L5	3282	U	O3'-P-O5'	-5.29	93.96	104.00
7	L5	3266	C	C6-N1-C2	-5.28	118.19	120.30
7	L5	3290	G	C4-N9-C1'	5.27	133.35	126.50
4	LR	145	LEU	CA-CB-CG	5.24	127.34	115.30
7	L5	3292	G	C5-C6-O6	5.22	131.73	128.60
7	L5	2915	G	N7-C8-N9	5.22	115.71	113.10
7	L5	2712	G	C4-C5-N7	5.21	112.88	110.80
7	L5	3581	C	O5'-P-OP2	-5.20	101.02	105.70
2	Lh	7	ARG	CD-NE-CZ	5.20	130.88	123.60
7	L5	3257	G	N3-C2-N2	-5.20	116.26	119.90
7	L5	2935	G	C6-C5-N7	-5.19	127.28	130.40
7	L5	390	C	C5-C6-N1	5.19	123.60	121.00
7	L5	3579	C	C5'-C4'-O4'	-5.19	102.87	109.10
7	L5	3588	C	C5-C6-N1	5.19	123.59	121.00
7	L5	3577	C	C6-N1-C2	-5.18	118.23	120.30
7	L5	3283	G	N7-C8-N9	5.16	115.68	113.10
7	L5	2912	G	C8-N9-C4	-5.15	104.34	106.40
8	L8	68	G	N3-C4-N9	5.15	129.09	126.00
7	L5	2903	G	OP1-P-O3'	5.14	116.51	105.20
7	L5	3590	G	C2-N3-C4	5.12	114.46	111.90
7	L5	2943	C	N1-C2-O2	5.11	121.97	118.90
7	L5	3577	C	N1-C2-O2	5.11	121.97	118.90
7	L5	2914	U	C5-C6-N1	5.11	125.25	122.70

Continued on next page...

Continued from previous page...

Mol	Chain	Res	Type	Atoms	Z	Observed(°)	Ideal(°)
7	L5	2915	G	C4-C5-N7	5.11	112.84	110.80
7	L5	3277	C	C4-C5-C6	-5.11	114.85	117.40
7	L5	2939	G	P-O3'-C3'	5.09	125.81	119.70
7	L5	2528	G	N3-C4-C5	-5.09	126.05	128.60
7	L5	2904	U	C6-N1-C2	-5.09	117.94	121.00
7	L5	2950	G	C5-C6-O6	-5.09	125.55	128.60
7	L5	3291	C	C5-C6-N1	5.09	123.54	121.00
7	L5	3580	G	O5'-P-OP1	-5.07	101.13	105.70
7	L5	2931	C	C6-N1-C2	-5.06	118.28	120.30
7	L5	3277	C	C5-C4-N4	-5.06	116.66	120.20
7	L5	2936	C	C2-N1-C1'	5.04	124.35	118.80
7	L5	2899	C	C2-N1-C1'	5.03	124.33	118.80
7	L5	2930	G	C8-N9-C4	-5.01	104.40	106.40
7	L5	3598	C	C6-N1-C2	-5.00	118.30	120.30

There are no chirality outliers.

All (1) planarity outliers are listed below:

Mol	Chain	Res	Type	Group
1	A	187	SER	Peptide

5.2 Too-close contacts

In the following table, the Non-H and H(model) columns list the number of non-hydrogen atoms and hydrogen atoms in the chain respectively. The H(added) column lists the number of hydrogen atoms added and optimized by MolProbity. The Clashes column lists the number of clashes within the asymmetric unit, whereas Symm-Clashes lists symmetry related clashes.

Mol	Chain	Non-H	H(model)	H(added)	Clashes	Symm-Clashes
1	A	2931	0	2967	43	0
2	Lh	1015	0	1148	0	0
3	Lk	569	0	637	0	0
4	LR	1281	0	1418	10	0
5	LX	985	0	1066	6	0
6	LY	1115	0	1205	17	0
7	L5	5761	0	2913	61	0
8	L8	1237	0	625	4	0
All	All	14894	0	11979	133	0

The all-atom clashscore is defined as the number of clashes found per 1000 atoms (including hydrogen atoms). The all-atom clashscore for this structure is 6.

All (133) close contacts within the same asymmetric unit are listed below, sorted by their clash magnitude.

Atom-1	Atom-2	Interatomic distance (Å)	Clash overlap (Å)
7:L5:2908:U:H3	7:L5:3586:G:H1	1.04	1.02
7:L5:2701:U:H3	7:L5:2715:G:H1	1.22	0.88
7:L5:3288:G:H1	7:L5:3578:U:H3	1.27	0.82
7:L5:2950:G:O6	7:L5:3244:U:N3	2.14	0.79
7:L5:3583:U:H4'	7:L5:3584:C:H5''	1.67	0.75
1:A:228:VAL:O	1:A:318:GLN:HA	1.89	0.71
1:A:152:ALA:O	1:A:156:LEU:HB2	1.93	0.68
7:L5:3589:G:N2	7:L5:3590:G:N7	2.45	0.64
1:A:332:ARG:HD3	1:A:335:SER:HB3	1.79	0.64
7:L5:2955:A:H2	7:L5:3239:G:H1	1.45	0.64
7:L5:2950:G:O6	7:L5:3244:U:C4	2.50	0.63
1:A:56:ILE:HD11	1:A:110:LEU:HD12	1.79	0.63
7:L5:2694:G:OP2	7:L5:2696:A:N6	2.32	0.63
1:A:84:ASN:HD21	1:A:313:GLY:H	1.45	0.62
6:LY:54:GLU:HB2	6:LY:108:ARG:HB3	1.80	0.62
7:L5:2955:A:N1	7:L5:3239:G:O6	2.35	0.60
1:A:206:THR:H	1:A:209:GLN:HE21	1.50	0.60
4:LR:96:MET:SD	4:LR:100:ARG:NH1	2.75	0.60
7:L5:3273:C:N4	7:L5:3274:G:O6	2.35	0.59
1:A:350:GLN:HA	1:A:355:LYS:HE2	1.84	0.59
1:A:236:LYS:NZ	8:L8:77:A:OP1	2.33	0.59
1:A:249:ARG:NE	1:A:270:GLU:OE2	2.30	0.59
1:A:362:ALA:HA	1:A:365:LYS:HE2	1.84	0.59
1:A:59:GLU:HG3	1:A:62:LYS:HD2	1.84	0.58
1:A:272:ARG:HH22	1:A:282:ALA:HB1	1.67	0.57
1:A:226:VAL:O	1:A:320:LYS:HA	2.04	0.57
1:A:187:SER:HB2	1:A:201:ILE:HB	1.86	0.57
1:A:46:LEU:HD21	1:A:93:LYS:HD3	1.87	0.56
7:L5:2947:G:H1	7:L5:3247:A:H2	1.54	0.54
7:L5:2950:G:O6	7:L5:3244:U:O4	2.25	0.54
4:LR:42:ARG:HA	4:LR:45:ILE:HD12	1.89	0.54
1:A:249:ARG:HB3	1:A:275:ALA:HA	1.90	0.54
4:LR:34:ASN:O	4:LR:40:GLN:NE2	2.41	0.54
7:L5:3239:G:H2'	7:L5:3240:A:H8	1.71	0.54
6:LY:89:LYS:NZ	7:L5:387:G:O5'	2.41	0.54
5:LX:89:LYS:HB3	5:LX:95:THR:HG23	1.88	0.54
7:L5:2949:U:H3	7:L5:3245:G:H1	1.55	0.53
4:LR:46:LYS:NZ	7:L5:2711:G:OP2	2.34	0.52
1:A:27:ILE:HD11	1:A:59:GLU:HB3	1.91	0.52
1:A:167:THR:HG23	1:A:203:GLN:HA	1.91	0.52

Continued on next page...

Continued from previous page...

Atom-1	Atom-2	Interatomic distance (Å)	Clash overlap (Å)
7:L5:3266:C:H2'	7:L5:3267:G:H8	1.74	0.52
1:A:123:HIS:HE1	1:A:338:PHE:HB2	1.75	0.51
7:L5:2901:G:H2'	7:L5:2902:G:H4'	1.91	0.51
7:L5:2914:U:H2'	7:L5:2915:G:C8	2.46	0.51
1:A:223:VAL:HG22	1:A:324:LEU:HG	1.91	0.51
1:A:42:GLY:HA2	1:A:99:ILE:HG23	1.93	0.51
7:L5:2908:U:O4	7:L5:3586:G:O6	2.29	0.51
1:A:16:LEU:HG	1:A:20:LYS:HE2	1.93	0.50
6:LY:44:VAL:HG21	6:LY:119:LEU:HD12	1.94	0.50
7:L5:2909:C:H2'	7:L5:2910:G:H8	1.77	0.49
7:L5:2914:U:H2'	7:L5:2915:G:H8	1.77	0.49
4:LR:81:ARG:HE	4:LR:88:ARG:NH1	2.10	0.49
7:L5:3589:G:N1	7:L5:3591:C:O2	2.46	0.49
6:LY:34:LEU:HD12	6:LY:38:LEU:HD23	1.95	0.49
7:L5:3591:C:N4	7:L5:3592:G:O6	2.45	0.49
1:A:196:ASP:N	1:A:196:ASP:OD1	2.45	0.48
7:L5:2953:C:H2'	7:L5:2954:G:C8	2.48	0.48
6:LY:33:PRO:HG2	6:LY:105:VAL:HG12	1.95	0.48
7:L5:2949:U:O4	7:L5:3245:G:O6	2.31	0.48
7:L5:2923:A:N1	7:L5:3270:G:O6	2.46	0.48
1:A:82:VAL:H	1:A:85:CYS:HB3	1.76	0.48
1:A:41:SER:N	1:A:128:ASP:OD2	2.47	0.48
6:LY:89:LYS:HG3	6:LY:91:ASN:H	1.78	0.48
7:L5:2909:C:H2'	7:L5:2910:G:C8	2.48	0.48
7:L5:3284:C:H2'	7:L5:3285:G:C8	2.49	0.48
1:A:83:ASN:OD1	1:A:105:LEU:N	2.41	0.47
1:A:85:CYS:SG	1:A:86:VAL:N	2.87	0.47
7:L5:382:G:N1	7:L5:385:A:OP2	2.40	0.47
4:LR:136:ARG:NE	7:L5:2896:G:OP1	2.47	0.47
7:L5:2949:U:C4	7:L5:3245:G:O6	2.66	0.47
7:L5:3581:C:H4'	7:L5:3581:C:OP1	2.15	0.47
6:LY:10:ASP:O	6:LY:14:ASN:ND2	2.48	0.46
1:A:163:ASN:OD1	1:A:163:ASN:N	2.47	0.46
1:A:202:ILE:HG12	1:A:205:PRO:HB3	1.97	0.46
7:L5:2904:U:H3	7:L5:3591:C:H2'	1.80	0.46
7:L5:3276:C:H2'	7:L5:3277:C:C6	2.51	0.46
6:LY:22:PRO:HG2	6:LY:25:ILE:HD12	1.98	0.46
6:LY:54:GLU:HA	6:LY:69:LYS:HA	1.96	0.46
4:LR:140:GLU:HA	4:LR:143:HIS:CD2	2.50	0.46
1:A:158:LYS:HG2	1:A:161:ASN:HD21	1.81	0.46
7:L5:2701:U:O2	7:L5:2715:G:N2	2.37	0.45

Continued on next page...

Continued from previous page...

Atom-1	Atom-2	Interatomic distance (Å)	Clash overlap (Å)
7:L5:2945:C:H2'	7:L5:2946:G:C8	2.51	0.45
7:L5:2949:U:H2'	7:L5:2950:G:H8	1.81	0.45
7:L5:405:U:O2'	7:L5:407:A:N7	2.42	0.45
7:L5:2949:U:H2'	7:L5:2950:G:C8	2.52	0.45
1:A:42:GLY:H	1:A:100:LEU:HB2	1.81	0.45
7:L5:2910:G:C5	7:L5:2911:G:H1'	2.52	0.45
7:L5:3276:C:H2'	7:L5:3277:C:H6	1.80	0.45
6:LY:4:ASN:HD22	6:LY:5:PRO:HD2	1.81	0.45
7:L5:2945:C:H2'	7:L5:2946:G:H8	1.82	0.45
7:L5:3244:U:H2'	7:L5:3245:G:H8	1.81	0.45
6:LY:23:SER:HA	6:LY:26:ARG:HB3	1.99	0.45
7:L5:3245:G:H2'	7:L5:3246:G:H8	1.82	0.44
7:L5:2947:G:O6	7:L5:3247:A:N1	2.51	0.44
1:A:81:SER:HB2	1:A:107:LYS:HE3	1.99	0.44
1:A:207:ASP:N	1:A:207:ASP:OD1	2.49	0.44
1:A:79:SER:HB2	1:A:109:ASP:HB3	2.00	0.44
6:LY:57:VAL:HA	6:LY:104:VAL:HG12	1.99	0.44
6:LY:74:TYR:OH	8:L8:75:G:OP2	2.36	0.44
1:A:205:PRO:HB2	1:A:210:LYS:HB3	2.00	0.43
6:LY:113:LYS:HE2	6:LY:113:LYS:HB3	1.86	0.43
1:A:347:MET:SD	1:A:347:MET:N	2.91	0.43
5:LX:145:ASP:OD1	5:LX:145:ASP:N	2.52	0.43
6:LY:82:ILE:HB	6:LY:85:VAL:HB	2.00	0.43
7:L5:3239:G:H2'	7:L5:3240:A:C8	2.52	0.43
7:L5:2946:G:H2'	7:L5:2947:G:C8	2.54	0.42
4:LR:140:GLU:HA	4:LR:143:HIS:HD2	1.84	0.42
1:A:290:ARG:NH2	5:LX:151:ASN:OD1	2.46	0.42
6:LY:117:LYS:O	6:LY:121:ARG:N	2.48	0.42
1:A:12:ILE:HD11	1:A:221:HIS:HA	2.01	0.42
7:L5:2374:A:H2'	7:L5:2375:A:H8	1.84	0.42
5:LX:73:HIS:HD2	5:LX:112:ALA:HA	1.84	0.42
6:LY:74:TYR:HE2	6:LY:77:LYS:HD3	1.83	0.42
1:A:82:VAL:HG12	1:A:83:ASN:H	1.84	0.42
1:A:185:MET:HB2	1:A:203:GLN:HE22	1.84	0.42
7:L5:2947:G:N1	7:L5:3247:A:C2	2.79	0.42
4:LR:116:ASP:N	4:LR:116:ASP:OD1	2.46	0.42
7:L5:2943:C:H2'	7:L5:2944:G:C8	2.54	0.42
7:L5:2955:A:N1	7:L5:3240:A:N6	2.67	0.42
7:L5:3294:C:H2'	7:L5:3295:G:O4'	2.19	0.42
7:L5:2939:G:H5'	7:L5:2940:C:H4'	2.02	0.42
1:A:258:LYS:NZ	7:L5:2526:C:OP1	2.41	0.41

Continued on next page...

Continued from previous page...

Atom-1	Atom-2	Interatomic distance (Å)	Clash overlap (Å)
5:LX:80:PRO:HA	5:LX:98:PHE:HA	2.02	0.41
1:A:45:VAL:HG13	1:A:80:ILE:HB	2.00	0.41
7:L5:3252:A:H5''	7:L5:3253:G:OP1	2.21	0.41
7:L5:3242:U:H2'	7:L5:3243:C:C6	2.55	0.41
5:LX:129:ARG:HD3	5:LX:133:GLU:HB2	2.03	0.41
7:L5:2915:G:H2'	7:L5:2916:G:H8	1.86	0.41
1:A:258:LYS:NZ	4:LR:36:ASN:O	2.54	0.40
7:L5:2942:C:H2'	7:L5:2943:C:C6	2.56	0.40
7:L5:2374:A:H2'	7:L5:2375:A:C8	2.57	0.40
8:L8:48:A:O2'	8:L8:50:C:OP2	2.28	0.40
8:L8:71:A:N6	8:L8:83:C:O4'	2.53	0.40

There are no symmetry-related clashes.

5.3 Torsion angles [i](#)

5.3.1 Protein backbone [i](#)

In the following table, the Percentiles column shows the percent Ramachandran outliers of the chain as a percentile score with respect to all PDB entries followed by that with respect to all EM entries.

The Analysed column shows the number of residues for which the backbone conformation was analysed, and the total number of residues.

Mol	Chain	Analysed	Favoured	Allowed	Outliers	Percentiles	
1	A	373/394 (95%)	360 (96%)	13 (4%)	0	100	100
2	Lh	120/123 (98%)	115 (96%)	5 (4%)	0	100	100
3	Lk	67/70 (96%)	63 (94%)	4 (6%)	0	100	100
4	LR	151/196 (77%)	148 (98%)	3 (2%)	0	100	100
5	LX	118/156 (76%)	107 (91%)	11 (9%)	0	100	100
6	LY	132/145 (91%)	123 (93%)	9 (7%)	0	100	100
All	All	961/1084 (89%)	916 (95%)	45 (5%)	0	100	100

There are no Ramachandran outliers to report.

5.3.2 Protein sidechains [i](#)

In the following table, the Percentiles column shows the percent sidechain outliers of the chain as a percentile score with respect to all PDB entries followed by that with respect to all EM entries.

The Analysed column shows the number of residues for which the sidechain conformation was analysed, and the total number of residues.

Mol	Chain	Analysed	Rotameric	Outliers	Percentiles	
1	A	321/336 (96%)	319 (99%)	2 (1%)	86	91
2	Lh	109/110 (99%)	108 (99%)	1 (1%)	78	87
3	Lk	64/65 (98%)	62 (97%)	2 (3%)	40	67
4	LR	137/175 (78%)	135 (98%)	2 (2%)	65	81
5	LX	108/133 (81%)	108 (100%)	0	100	100
6	LY	124/135 (92%)	120 (97%)	4 (3%)	39	67
All	All	863/954 (90%)	852 (99%)	11 (1%)	70	82

All (11) residues with a non-rotameric sidechain are listed below:

Mol	Chain	Res	Type
1	A	65	LYS
1	A	273	PHE
2	Lh	7	ARG
3	Lk	69	LEU
3	Lk	70	LYS
4	LR	36	ASN
4	LR	100	ARG
6	LY	4	ASN
6	LY	27	ARG
6	LY	79	VAL
6	LY	84	ARG

Some sidechains can be flipped to improve hydrogen bonding and reduce clashes. All (13) such sidechains are listed below:

Mol	Chain	Res	Type
1	A	7	GLN
1	A	84	ASN
1	A	123	HIS
1	A	161	ASN
1	A	209	GLN
1	A	213	HIS

Continued on next page...

Continued from previous page...

Mol	Chain	Res	Type
4	LR	7	GLN
4	LR	36	ASN
4	LR	40	GLN
4	LR	66	ASN
4	LR	143	HIS
5	LX	73	HIS
6	LY	4	ASN

5.3.3 RNA [i](#)

Mol	Chain	Analysed	Backbone Outliers	Pucker Outliers
7	L5	262/5070 (5%)	79 (30%)	15 (5%)
8	L8	57/157 (36%)	16 (28%)	0
All	All	319/5227 (6%)	95 (29%)	15 (4%)

All (95) RNA backbone outliers are listed below:

Mol	Chain	Res	Type
7	L5	385	A
7	L5	387	G
7	L5	388	A
7	L5	398	A
7	L5	406	C
7	L5	407	A
7	L5	408	A
7	L5	410	A
7	L5	412	G
7	L5	413	G
7	L5	415	G
7	L5	2389	A
7	L5	2520	C
7	L5	2533	C
7	L5	2536	A
7	L5	2537	A
7	L5	2695	A
7	L5	2697	A
7	L5	2708	U
7	L5	2711	G
7	L5	2712	G
7	L5	2714	G
7	L5	2902	G

Continued on next page...

Continued from previous page...

Mol	Chain	Res	Type
7	L5	2903	G
7	L5	2904	U
7	L5	2906	G
7	L5	2911	G
7	L5	2923	A
7	L5	2925	G
7	L5	2928	G
7	L5	2931	C
7	L5	2932	U
7	L5	2933	G
7	L5	2939	G
7	L5	2940	C
7	L5	2941	G
7	L5	2942	C
7	L5	2943	C
7	L5	2947	G
7	L5	2948	C
7	L5	2952	A
7	L5	2953	C
7	L5	2957	G
7	L5	2958	C
7	L5	3237	G
7	L5	3243	C
7	L5	3247	A
7	L5	3252	A
7	L5	3253	G
7	L5	3254	C
7	L5	3255	C
7	L5	3257	G
7	L5	3261	C
7	L5	3266	C
7	L5	3273	C
7	L5	3282	U
7	L5	3283	G
7	L5	3293	U
7	L5	3295	G
7	L5	3296	C
7	L5	3571	C
7	L5	3572	G
7	L5	3576	C
7	L5	3579	C
7	L5	3580	G

Continued on next page...

Continued from previous page...

Mol	Chain	Res	Type
7	L5	3581	C
7	L5	3583	U
7	L5	3584	C
7	L5	3591	C
7	L5	3592	G
7	L5	3593	C
7	L5	3594	C
7	L5	3595	U
7	L5	3596	A
7	L5	3597	G
7	L5	3602	C
7	L5	3604	A
7	L5	3605	C
7	L5	3606	U
8	L8	48	A
8	L8	49	G
8	L8	51	U
8	L8	59	A
8	L8	60	G
8	L8	61	A
8	L8	62	A
8	L8	63	U
8	L8	77	A
8	L8	82	A
8	L8	83	C
8	L8	84	A
8	L8	85	U
8	L8	86	U
8	L8	87	G
8	L8	88	A

All (15) RNA pucker outliers are listed below:

Mol	Chain	Res	Type
7	L5	406	C
7	L5	2902	G
7	L5	2903	G
7	L5	2930	G
7	L5	2931	C
7	L5	2939	G
7	L5	2940	C
7	L5	2943	C

Continued on next page...

Continued from previous page...

Mol	Chain	Res	Type
7	L5	2957	G
7	L5	3236	G
7	L5	3256	G
7	L5	3295	G
7	L5	3579	C
7	L5	3583	U
7	L5	3593	C

5.4 Non-standard residues in protein, DNA, RNA chains [i](#)

There are no non-standard protein/DNA/RNA residues in this entry.

5.5 Carbohydrates [i](#)

There are no carbohydrates in this entry.

5.6 Ligand geometry [i](#)

There are no ligands in this entry.

5.7 Other polymers [i](#)

There are no such residues in this entry.

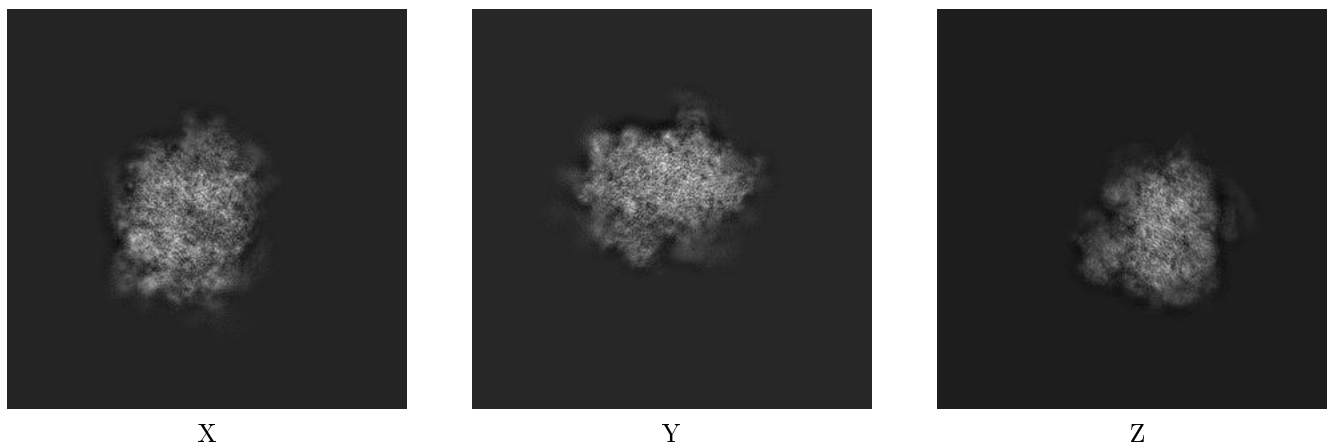
5.8 Polymer linkage issues [i](#)

There are no chain breaks in this entry.

6 Map visualisation [i](#)

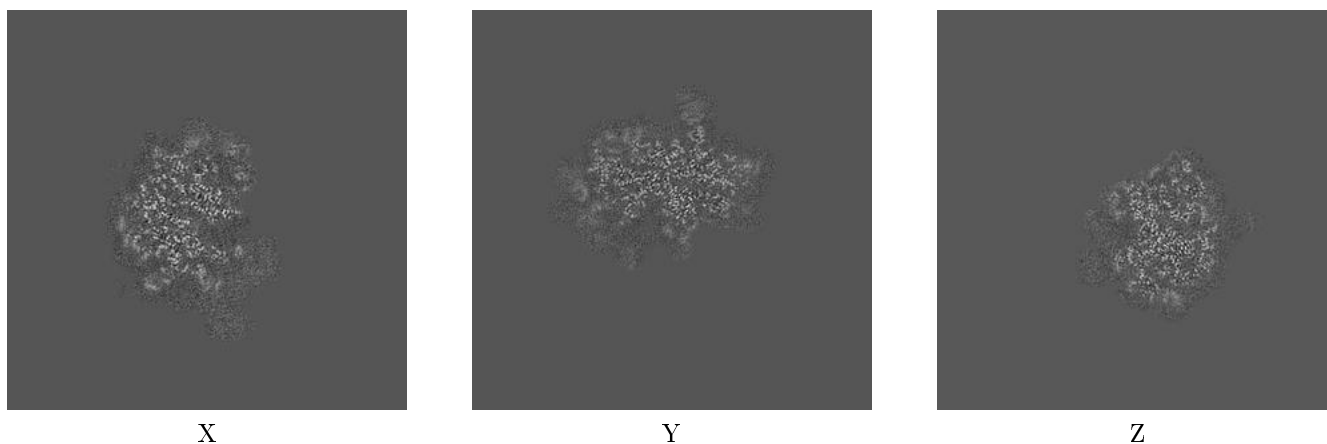
This section contains visualisations of the EMDB entry EMD-10344. These are intended to permit visual inspection of the internal detail of the map and identification of artifacts.

6.1 Orthogonal projections [i](#)



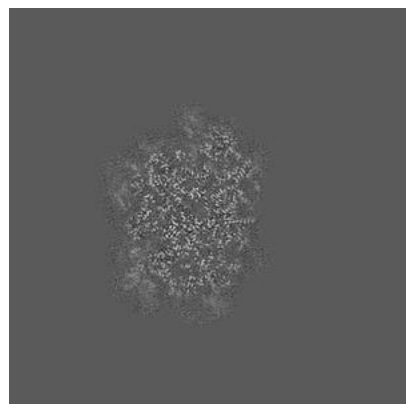
The images above show the map projected in three orthogonal projections, in greyscale.

6.2 Central slices [i](#)

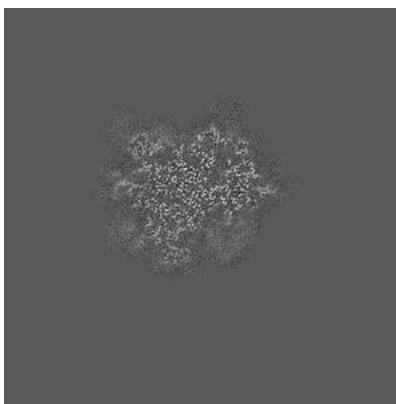


The images above show central slices of the map in three orthogonal directions, in greyscale.

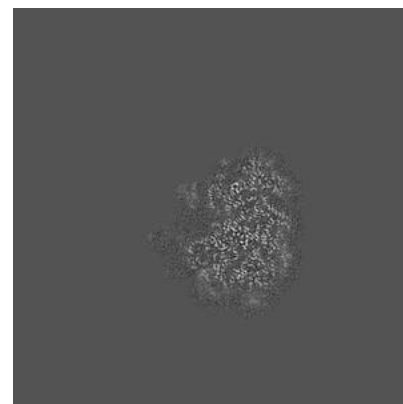
6.3 Largest variance slices [i](#)



X Index: 288



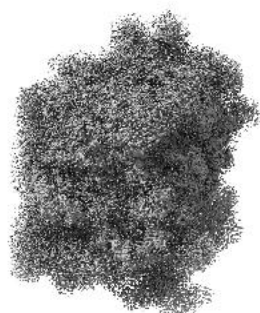
Y Index: 209



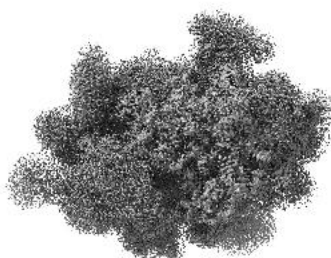
Z Index: 245

The images above show the highest variance slices of the map in three orthogonal directions, in greyscale.

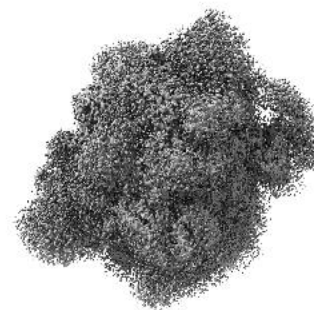
6.4 Orthogonal surface views [i](#)



X



Y



Z

The images above show the 3D surface view of the map at the recommended contour level 0.01. This in conjunction with the slice images can indicate whether an appropriate contour level has been selected.

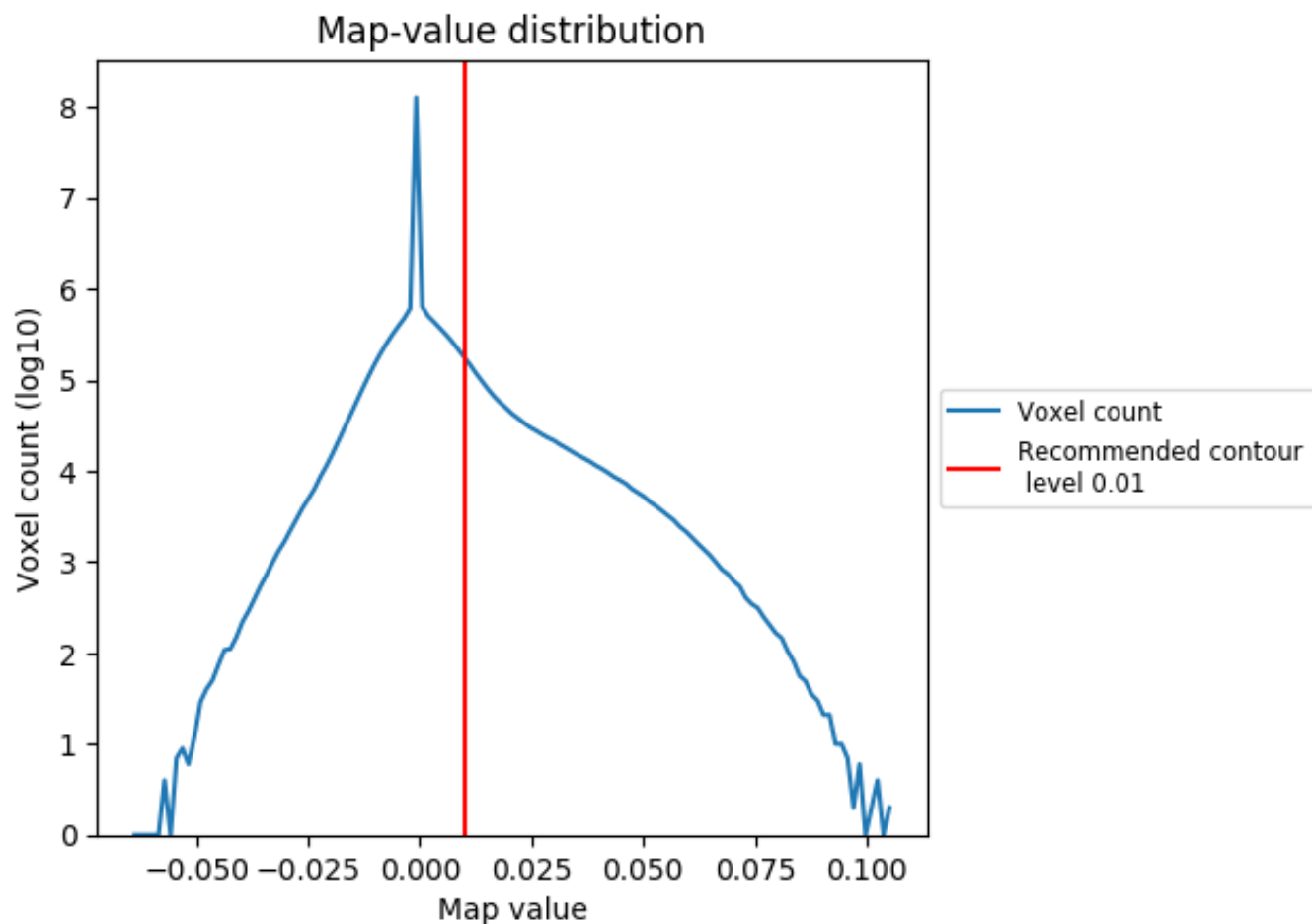
6.5 Mask visualisation [i](#)

This section was not generated. No masks were provided.

7 Map analysis [i](#)

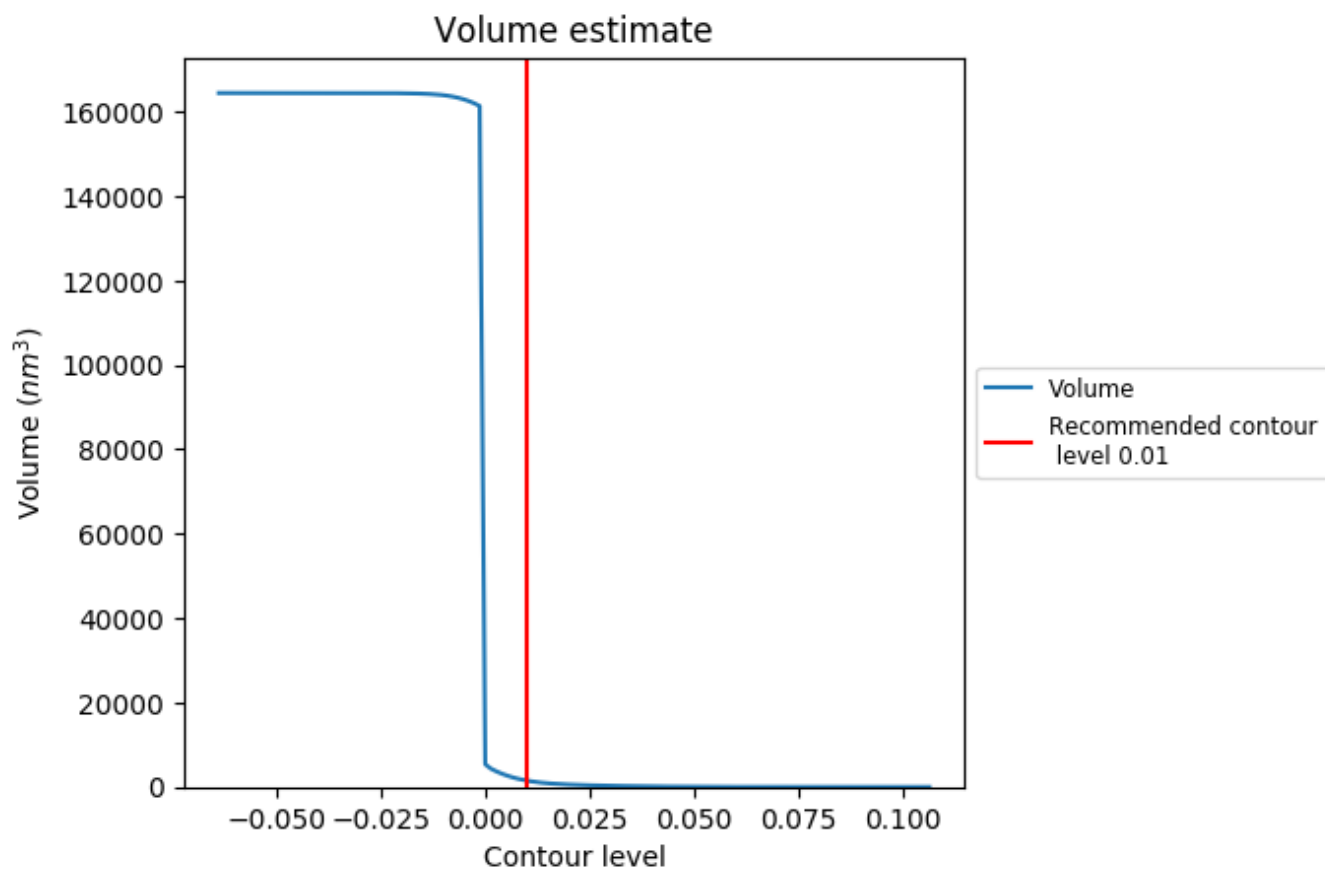
This section contains the results of statistical analysis of the map.

7.1 Map-value distribution [i](#)



The map-value distribution is plotted in 128 intervals along the x-axis. The y-axis is logarithmic. A spike in this graph at zero usually indicates that the volume has been masked.

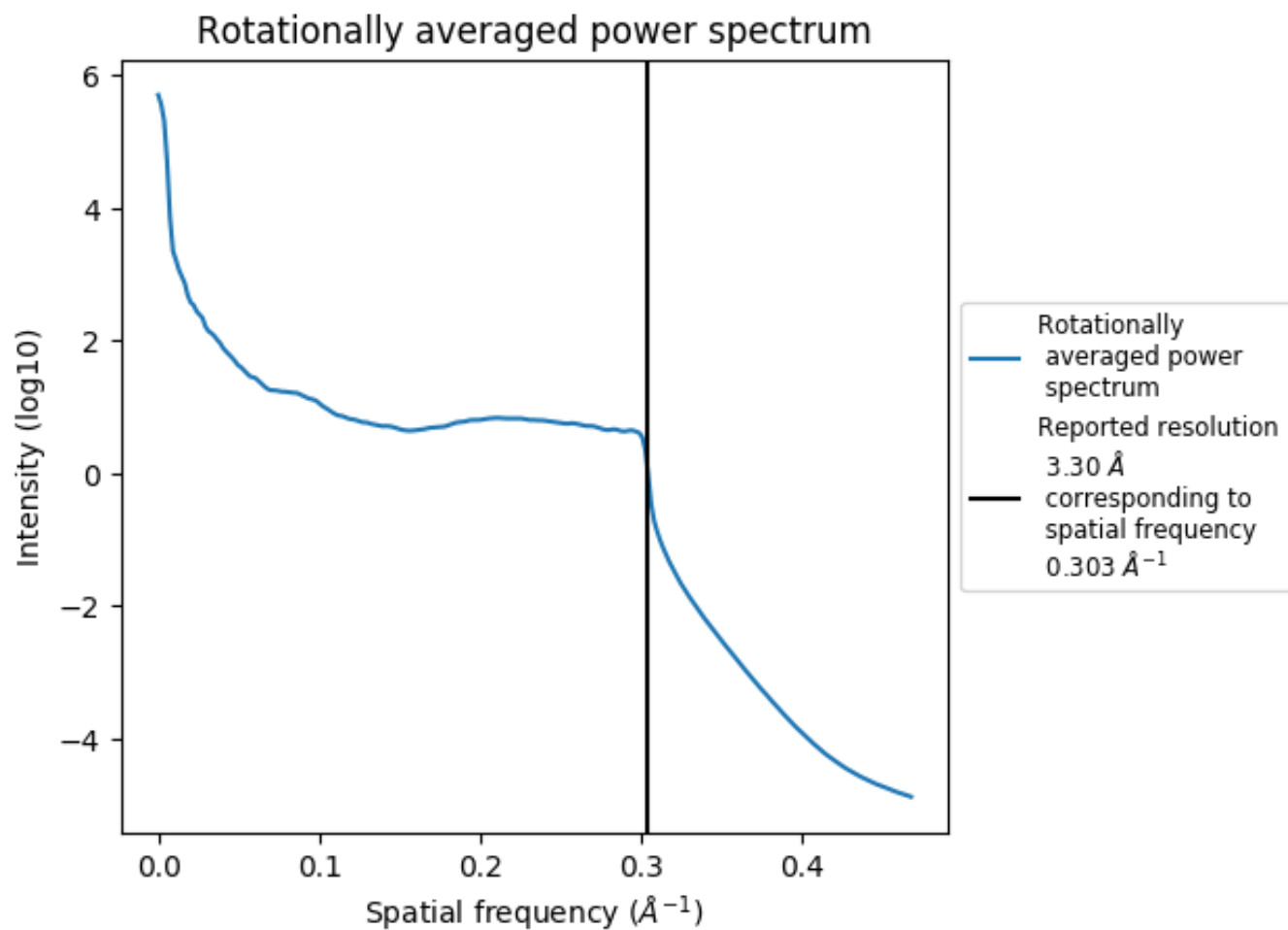
7.2 Volume estimate [i](#)



The volume at the recommended contour level is 1507 nm^3 ; this corresponds to an approximate mass of 1361 kDa.

The volume estimate graph shows how the enclosed volume varies with the contour level. The recommended contour level is shown as a vertical line and the intersection between the line and the curve gives the volume of the enclosed surface at the given level.

7.3 Rotationally averaged power spectrum [i](#)



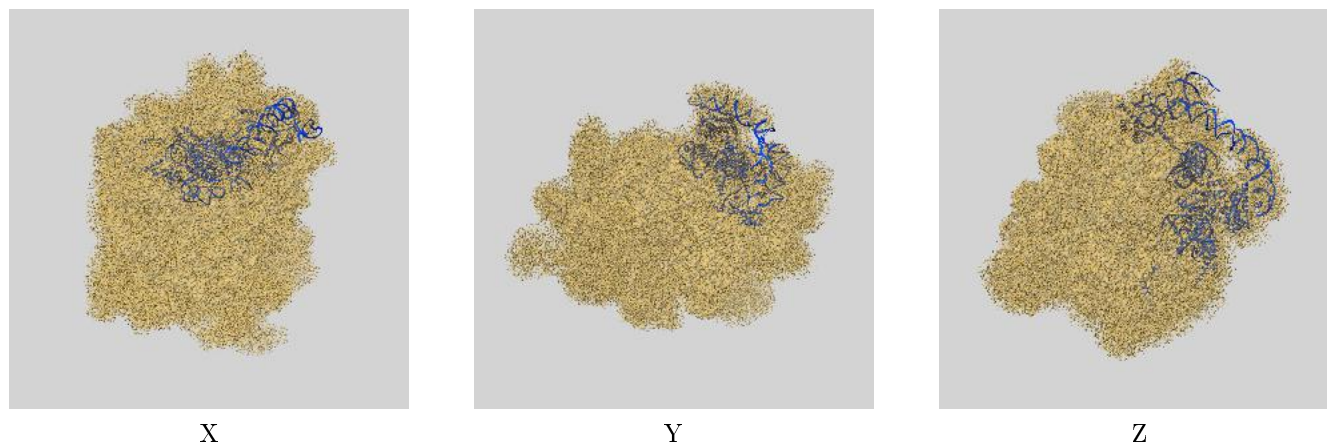
8 Fourier-Shell correlation

This section was not generated. No FSC curve or half maps provided.

9 Map-model fit [i](#)

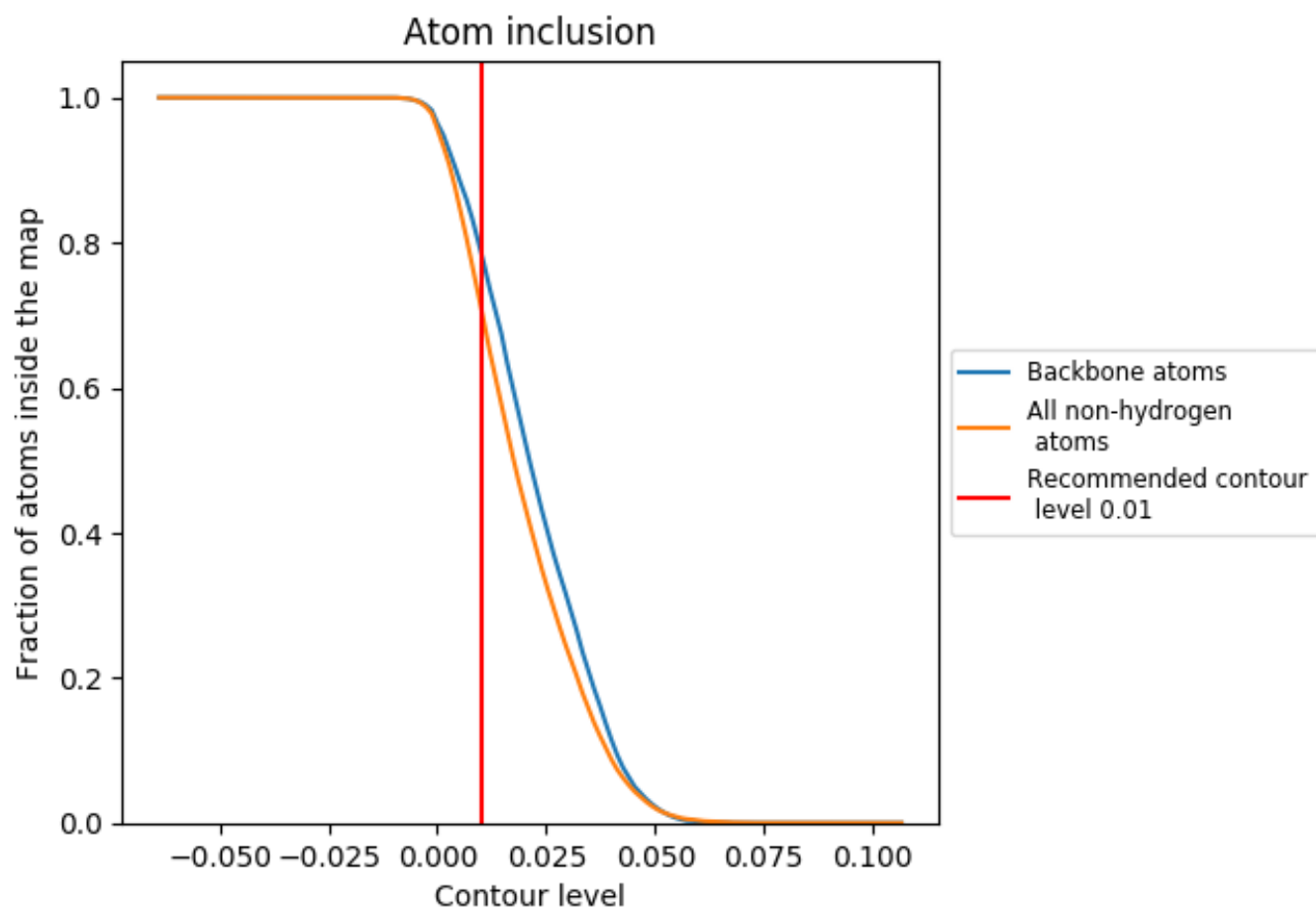
This section contains information regarding the fit between EMDB map EMD-10344 and PDB model 6SXO. Per-residue inclusion information can be found in section 3 on page 6.

9.1 Map-model overlay [i](#)



The images above show the 3D surface view of the map at the recommended contour level 0.01 at 50% transparency in yellow overlaid with a ribbon representation of the model coloured in blue. These images allow for the visual assessment of the quality of fit between the atomic model and the map.

9.2 Atom inclusion [i](#)



At the recommended contour level, 79% of all backbone atoms, 71% of all non-hydrogen atoms, are inside the map.