



## Full wwPDB EM Validation Report ⓘ

Dec 6, 2020 – 02:54 PM EST

PDB ID : 5SYC  
EMDB ID : EMD-8320  
Title : Near-atomic resolution cryo-EM reconstruction of peloruside-stabilized microtubule  
Authors : Kellogg, E.H.; Nogales, E.  
Deposited on : 2016-08-10  
Resolution : 3.50 Å(reported)

This is a Full wwPDB EM Validation Report for a publicly released PDB entry.

We welcome your comments at [validation@mail.wwpdb.org](mailto:validation@mail.wwpdb.org)

A user guide is available at

<https://www.wwpdb.org/validation/2017/EMValidationReportHelp>

with specific help available everywhere you see the ⓘ symbol.

---

The following versions of software and data (see [references ⓘ](#)) were used in the production of this report:

EMDB validation analysis : 0.0.0.dev61  
Mogul : 1.8.5 (274361), CSD as541be (2020)  
MolProbity : 4.02b-467  
buster-report : 1.1.7 (2018)  
Percentile statistics : 20191225.v01 (using entries in the PDB archive December 25th 2019)  
Ideal geometry (proteins) : Engh & Huber (2001)  
Ideal geometry (DNA, RNA) : Parkinson et al. (1996)  
Validation Pipeline (wwPDB-VP) : 2.15.1

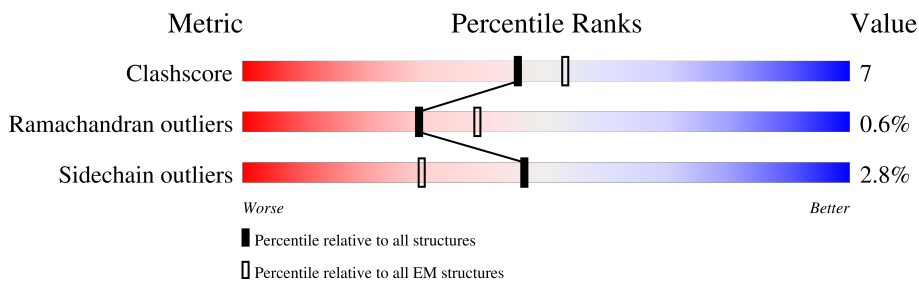
# 1 Overall quality at a glance

The following experimental techniques were used to determine the structure:

*ELECTRON MICROSCOPY*

The reported resolution of this entry is 3.50 Å.

Percentile scores (ranging between 0-100) for global validation metrics of the entry are shown in the following graphic. The table shows the number of entries on which the scores are based.



Metric	Whole archive (#Entries)	EM structures (#Entries)
Clashscore	158937	4297
Ramachandran outliers	154571	4023
Sidechain outliers	154315	3826

The table below summarises the geometric issues observed across the polymeric chains and their fit to the map. The red, orange, yellow and green segments of the bar indicate the fraction of residues that contain outliers for  $\geq 3$ , 2, 1 and 0 types of geometric quality criteria respectively. A grey segment represents the fraction of residues that are not modelled. The numeric value for each fraction is indicated below the corresponding segment, with a dot representing fractions  $\leq 5\%$ . The upper red bar (where present) indicates the fraction of residues that have poor fit to the EM map (all-atom inclusion  $< 40\%$ ). The numeric value is given above the bar.

Mol	Chain	Length	Quality of chain
1	A	437	 86% 10% . .
2	B	426	 87% 12% .

## 2 Entry composition [i](#)

There are 6 unique types of molecules in this entry. The entry contains 6778 atoms, of which 0 are hydrogens and 0 are deuteriums.

In the tables below, the AltConf column contains the number of residues with at least one atom in alternate conformation and the Trace column contains the number of residues modelled with at most 2 atoms.

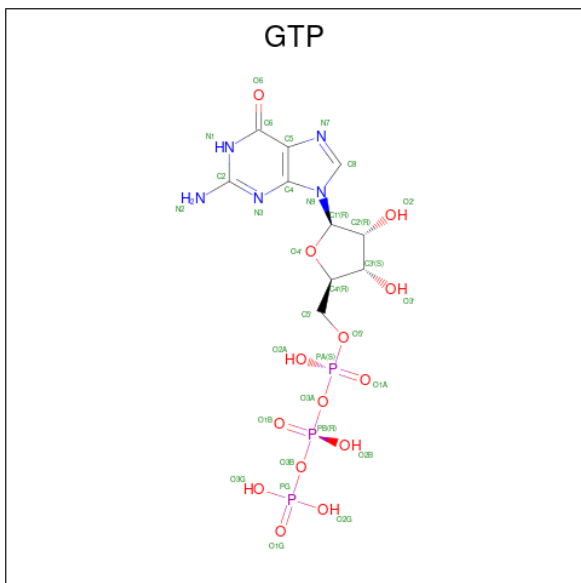
- Molecule 1 is a protein called Tubulin alpha chain.

Mol	Chain	Residues	Atoms					AltConf	Trace
			Total	C	N	O	S		
1	A	424	3327	2112	567	627	21	0	0

- Molecule 2 is a protein called Tubulin beta chain.

Mol	Chain	Residues	Atoms					AltConf	Trace
			Total	C	N	O	S		
2	B	426	3352	2106	575	645	26	0	0

- Molecule 3 is GUANOSINE-5'-TRIPHOSPHATE (three-letter code: GTP) (formula:  $C_{10}H_{16}N_5O_{14}P_3$ ).

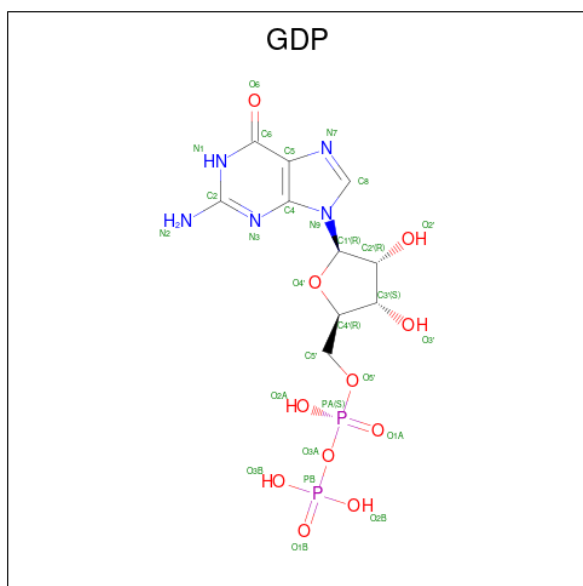


Mol	Chain	Residues	Atoms					AltConf
			Total	C	N	O	P	
3	A	1	32	10	5	14	3	0

- Molecule 4 is MAGNESIUM ION (three-letter code: MG) (formula: Mg).

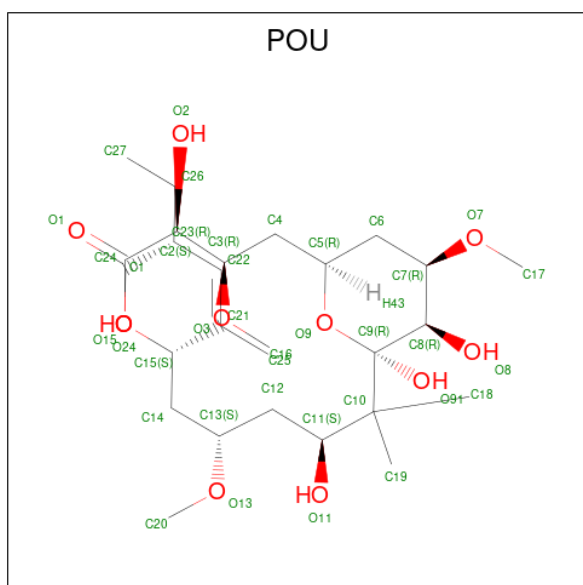
Mol	Chain	Residues	Atoms		AltConf
4	A	1	Total	Mg	0
			1	1	

- Molecule 5 is GUANOSINE-5'-DIPHOSPHATE (three-letter code: GDP) (formula: C<sub>10</sub>H<sub>15</sub>N<sub>5</sub>O<sub>11</sub>P<sub>2</sub>).



Mol	Chain	Residues	Atoms					AltConf
5	B	1	Total	C	N	O	P	0
			28	10	5	11	2	

- Molecule 6 is Peloruside A (three-letter code: POU) (formula: C<sub>27</sub>H<sub>48</sub>O<sub>11</sub>).

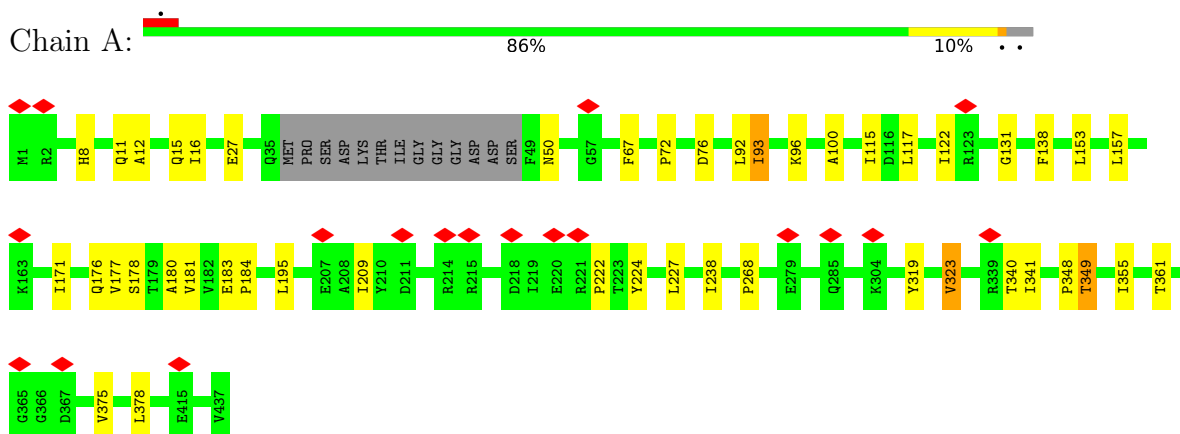


Mol	Chain	Residues	Atoms			AltConf
			Total	C	O	
6	B	1	38	27	11	0

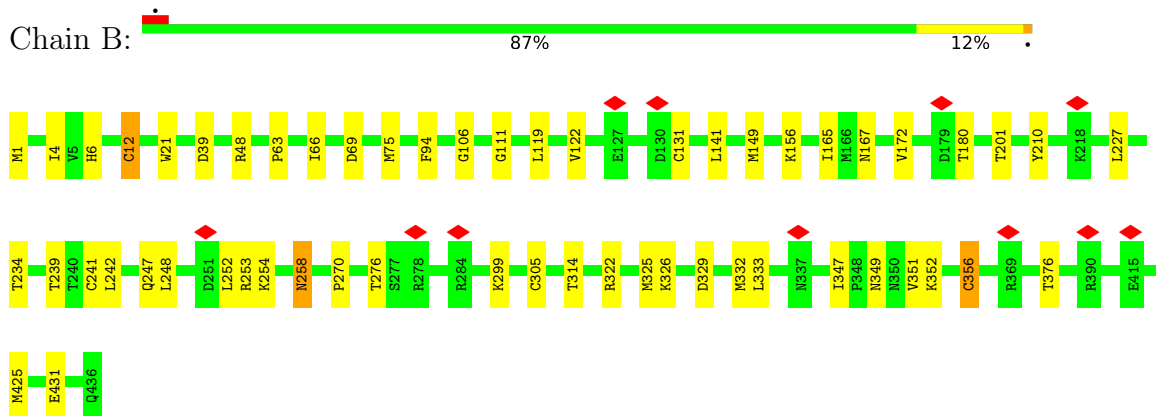
### 3 Residue-property plots [i](#)

These plots are drawn for all protein, RNA, DNA and oligosaccharide chains in the entry. The first graphic for a chain summarises the proportions of the various outlier classes displayed in the second graphic. The second graphic shows the sequence view annotated by issues in geometry and atom inclusion in map density. Residues are color-coded according to the number of geometric quality criteria for which they contain at least one outlier: green = 0, yellow = 1, orange = 2 and red = 3 or more. A red diamond above a residue indicates a poor fit to the EM map for this residue (all-atom inclusion < 40%). Stretches of 2 or more consecutive residues without any outlier are shown as a green connector. Residues present in the sample, but not in the model, are shown in grey.

- Molecule 1: Tubulin alpha chain



- Molecule 2: Tubulin beta chain



## 4 Experimental information

Property	Value	Source
EM reconstruction method	HELICAL	Depositor
Imposed symmetry	HELICAL, twist=-27.7°, rise=9.38 Å, axial sym=C1	Depositor
Number of segments used	17069	Depositor
Resolution determination method	FSC 0.143 CUT-OFF	Depositor
CTF correction method	PHASE FLIPPING AND AMPLITUDE CORRECTION	Depositor
Microscope	FEI TITAN	Depositor
Voltage (kV)	300	Depositor
Electron dose ( $e^-/\text{Å}^2$ )	8	Depositor
Minimum defocus (nm)	1100	Depositor
Maximum defocus (nm)	3800	Depositor
Magnification	27500	Depositor
Image detector	GATAN K2 SUMMIT (4k x 4k)	Depositor
Maximum map value	26.677	Depositor
Minimum map value	-11.726	Depositor
Average map value	0.056	Depositor
Map value standard deviation	1.236	Depositor
Recommended contour level	5.83	Depositor
Map size (Å)	675.84, 675.84, 675.84	wwPDB
Map dimensions	512, 512, 512	wwPDB
Map angles (°)	90.0, 90.0, 90.0	wwPDB
Pixel spacing (Å)	1.32, 1.32, 1.32	Depositor

## 5 Model quality [i](#)

### 5.1 Standard geometry [i](#)

Bond lengths and bond angles in the following residue types are not validated in this section: GDP, GTP, MG, POU

The Z score for a bond length (or angle) is the number of standard deviations the observed value is removed from the expected value. A bond length (or angle) with  $|Z| > 5$  is considered an outlier worth inspection. RMSZ is the root-mean-square of all Z scores of the bond lengths (or angles).

Mol	Chain	Bond lengths		Bond angles	
		RMSZ	# Z  >5	RMSZ	# Z  >5
1	A	0.37	0/3402	0.61	0/4615
2	B	0.37	0/3427	0.58	0/4641
All	All	0.37	0/6829	0.60	0/9256

There are no bond length outliers.

There are no bond angle outliers.

There are no chirality outliers.

There are no planarity outliers.

### 5.2 Too-close contacts [i](#)

In the following table, the Non-H and H(model) columns list the number of non-hydrogen atoms and hydrogen atoms in the chain respectively. The H(added) column lists the number of hydrogen atoms added and optimized by MolProbity. The Clashes column lists the number of clashes within the asymmetric unit, whereas Symm-Clashes lists symmetry-related clashes.

Mol	Chain	Non-H	H(model)	H(added)	Clashes	Symm-Clashes
1	A	3327	0	3247	62	0
2	B	3352	0	3237	70	0
3	A	32	0	12	1	0
4	A	1	0	0	0	0
5	B	28	0	12	1	0
6	B	38	0	48	5	0
All	All	6778	0	6556	89	0

The all-atom clashscore is defined as the number of clashes found per 1000 atoms (including hydrogen atoms). The all-atom clashscore for this structure is 7.

All (89) close contacts within the same asymmetric unit are listed below, sorted by their clash



magnitude.

Atom-1	Atom-2	Interatomic distance (Å)	Clash overlap (Å)
1:A:96:LYS:HD3	2:B:131:CYS:SG	1.69	1.33
1:A:178:SER:HB3	2:B:349:ASN:OD1	1.43	1.18
1:A:176:GLN:O	2:B:333:LEU:HD13	1.49	1.12
1:A:96:LYS:HD3	2:B:131:CYS:HG	1.04	1.01
1:A:181:VAL:HG22	2:B:349:ASN:O	1.63	0.97
1:A:224:TYR:CD1	2:B:325:MET:HG3	2.03	0.92
1:A:178:SER:CB	2:B:349:ASN:OD1	2.18	0.91
1:A:11:GLN:NE2	2:B:247:GLN:O	2.10	0.85
1:A:340:THR:CA	1:A:341:ILE:N	2.44	0.81
1:A:178:SER:HB3	2:B:349:ASN:CG	2.01	0.81
2:B:1:MET:SD	2:B:131:CYS:SG	2.81	0.79
2:B:299:LYS:NZ	6:B:502:POU:H34	1.98	0.78
1:A:222:PRO:HG2	2:B:326:LYS:CB	2.16	0.76
1:A:222:PRO:CD	2:B:326:LYS:HD3	2.17	0.75
1:A:96:LYS:CD	2:B:131:CYS:SG	2.64	0.75
1:A:222:PRO:HG3	2:B:326:LYS:HD2	1.67	0.75
1:A:12:ALA:HB2	3:A:501:GTP:C8	2.22	0.74
1:A:222:PRO:HG2	2:B:326:LYS:HB2	1.68	0.73
1:A:96:LYS:CD	2:B:131:CYS:HG	1.94	0.70
1:A:176:GLN:O	2:B:333:LEU:CD1	2.36	0.70
1:A:100:ALA:HA	2:B:254:LYS:HG3	1.76	0.68
1:A:222:PRO:HG3	2:B:326:LYS:CD	2.25	0.67
1:A:100:ALA:HB1	2:B:254:LYS:HA	1.79	0.65
1:A:72:PRO:O	2:B:48:ARG:NH2	2.31	0.64
1:A:76:ASP:CG	2:B:48:ARG:HH22	2.01	0.63
2:B:1:MET:CE	2:B:131:CYS:SG	2.86	0.63
1:A:222:PRO:HD3	2:B:326:LYS:HD3	1.80	0.62
2:B:299:LYS:HZ2	6:B:502:POU:H34	1.65	0.60
1:A:222:PRO:CG	2:B:326:LYS:CD	2.79	0.60
1:A:100:ALA:HA	2:B:254:LYS:CG	2.32	0.60
1:A:177:VAL:HB	2:B:329:ASP:OD1	2.01	0.59
1:A:96:LYS:CD	2:B:1:MET:SD	2.91	0.58
1:A:181:VAL:CG2	2:B:349:ASN:O	2.44	0.58
1:A:181:VAL:N	2:B:258:ASN:OD1	2.32	0.58
1:A:224:TYR:CE1	2:B:325:MET:HG3	2.38	0.58
2:B:234:THR:HG21	2:B:270:PRO:HB2	1.85	0.57
2:B:1:MET:SD	2:B:131:CYS:HB2	2.44	0.57
1:A:96:LYS:HD3	2:B:1:MET:SD	2.45	0.56
2:B:210:TYR:CE2	2:B:227:LEU:HD11	2.43	0.54
1:A:181:VAL:CG1	2:B:347:ILE:CG2	2.86	0.54
1:A:222:PRO:HG2	2:B:326:LYS:HB3	1.90	0.54

*Continued on next page...*

*Continued from previous page...*

Atom-1	Atom-2	Interatomic distance (Å)	Clash overlap (Å)
2:B:247:GLN:OE1	2:B:325:MET:SD	2.67	0.53
1:A:181:VAL:HB	2:B:258:ASN:OD1	2.10	0.52
1:A:181:VAL:HG11	2:B:347:ILE:CG2	2.40	0.52
1:A:16:ILE:HD11	1:A:171:ILE:HD11	1.92	0.51
2:B:299:LYS:HZ1	6:B:502:POU:H34	1.72	0.50
2:B:4:ILE:HD11	2:B:242:LEU:CD1	2.41	0.50
1:A:222:PRO:CG	2:B:326:LYS:HD3	2.40	0.49
2:B:165:ILE:HD11	2:B:253:ARG:HB2	1.94	0.49
1:A:222:PRO:CG	2:B:326:LYS:CB	2.90	0.49
1:A:115:ILE:HD11	1:A:153:LEU:HA	1.93	0.49
1:A:67:PHE:CB	1:A:92:LEU:HD23	2.43	0.48
2:B:1:MET:HE1	2:B:131:CYS:SG	2.54	0.47
2:B:119:LEU:HD21	2:B:156:LYS:CB	2.45	0.46
1:A:181:VAL:H	2:B:258:ASN:CG	2.18	0.46
2:B:239:THR:HG22	2:B:252:LEU:HD21	1.98	0.45
1:A:180:ALA:HA	2:B:352:LYS:HG3	1.96	0.45
6:B:502:POU:H27	6:B:502:POU:O15	2.17	0.45
1:A:319:TYR:CD2	1:A:375:VAL:HG22	2.52	0.45
1:A:122:ILE:HD13	1:A:157:LEU:HD21	1.99	0.44
1:A:177:VAL:CB	2:B:329:ASP:OD1	2.64	0.44
1:A:11:GLN:O	1:A:15:GLN:HG2	2.17	0.44
1:A:177:VAL:HG12	2:B:333:LEU:HB2	1.98	0.44
2:B:106:GLY:O	2:B:111:GLY:HA3	2.17	0.44
2:B:21:TRP:CZ3	2:B:63:PRO:HB3	2.52	0.44
2:B:1:MET:SD	2:B:131:CYS:CB	3.04	0.44
2:B:66:ILE:CD1	2:B:122:VAL:HG22	2.47	0.44
2:B:141:LEU:HD22	2:B:172:VAL:HG12	2.00	0.44
1:A:93:ILE:HD11	1:A:117:LEU:HG	2.00	0.43
1:A:209:ILE:HG21	1:A:227:LEU:HG	1.99	0.43
2:B:69:ASP:O	2:B:94:PHE:HA	2.17	0.43
1:A:27:GLU:HG2	1:A:361:THR:HG21	2.00	0.43
1:A:238:ILE:HD11	1:A:378:LEU:HD21	2.00	0.42
1:A:181:VAL:O	1:A:181:VAL:HG12	2.19	0.42
6:B:502:POU:H46	6:B:502:POU:H40	1.91	0.42
1:A:181:VAL:CB	2:B:258:ASN:OD1	2.66	0.42
1:A:222:PRO:HD2	2:B:326:LYS:HB3	2.01	0.42
1:A:323:VAL:CG2	1:A:355:ILE:HG23	2.50	0.42
1:A:8:HIS:CE1	1:A:138:PHE:CD1	3.08	0.41
1:A:76:ASP:CG	2:B:48:ARG:NH2	2.72	0.41
1:A:11:GLN:HE22	2:B:248:LEU:HA	1.85	0.41
2:B:241:CYS:HA	2:B:356:CYS:SG	2.60	0.41

*Continued on next page...*

Continued from previous page...

Atom-1	Atom-2	Interatomic distance (Å)	Clash overlap (Å)
2:B:119:LEU:HD21	2:B:156:LYS:HB2	2.03	0.41
2:B:332:MET:SD	2:B:351:VAL:HG11	2.61	0.41
1:A:176:GLN:C	1:A:177:VAL:HG13	2.41	0.41
1:A:183:GLU:N	1:A:184:PRO:CD	2.83	0.40
2:B:75:MET:CE	2:B:94:PHE:HB3	2.51	0.40
2:B:12:CYS:HB2	5:B:501:GDP:C4	2.56	0.40
1:A:100:ALA:CA	2:B:254:LYS:HG3	2.50	0.40

There are no symmetry-related clashes.

## 5.3 Torsion angles [i](#)

### 5.3.1 Protein backbone [i](#)

In the following table, the Percentiles column shows the percent Ramachandran outliers of the chain as a percentile score with respect to all PDB entries followed by that with respect to all EM entries.

The Analysed column shows the number of residues for which the backbone conformation was analysed, and the total number of residues.

Mol	Chain	Analysed	Favoured	Allowed	Outliers	Percentiles	
1	A	418/437 (96%)	381 (91%)	32 (8%)	5 (1%)	13	50
2	B	424/426 (100%)	415 (98%)	9 (2%)	0	100	100
All	All	842/863 (98%)	796 (94%)	41 (5%)	5 (1%)	29	64

All (5) Ramachandran outliers are listed below:

Mol	Chain	Res	Type
1	A	50	ASN
1	A	349	THR
1	A	348	PRO
1	A	131	GLY
1	A	268	PRO

### 5.3.2 Protein sidechains [i](#)

In the following table, the Percentiles column shows the percent sidechain outliers of the chain as a percentile score with respect to all PDB entries followed by that with respect to all EM entries.

The Analysed column shows the number of residues for which the sidechain conformation was analysed, and the total number of residues.

Mol	Chain	Analysed	Rotameric	Outliers	Percentiles	
1	A	357/368 (97%)	353 (99%)	4 (1%)	73	88
2	B	367/367 (100%)	351 (96%)	16 (4%)	28	62
All	All	724/735 (98%)	704 (97%)	20 (3%)	46	72

All (20) residues with a non-rotameric sidechain are listed below:

Mol	Chain	Res	Type
1	A	93	ILE
1	A	195	LEU
1	A	323	VAL
1	A	349	THR
2	B	6	HIS
2	B	12	CYS
2	B	39	ASP
2	B	149	MET
2	B	167	ASN
2	B	180	THR
2	B	201	THR
2	B	258	ASN
2	B	276	THR
2	B	305	CYS
2	B	314	THR
2	B	322	ARG
2	B	356	CYS
2	B	376	THR
2	B	425	MET
2	B	431	GLU

Sometimes sidechains can be flipped to improve hydrogen bonding and reduce clashes. All (3) such sidechains are listed below:

Mol	Chain	Res	Type
1	A	101	ASN
1	A	216	ASN
2	B	350	ASN

### 5.3.3 RNA [i](#)

There are no RNA molecules in this entry.

## 5.4 Non-standard residues in protein, DNA, RNA chains [i](#)

There are no non-standard protein/DNA/RNA residues in this entry.

## 5.5 Carbohydrates [i](#)

There are no monosaccharides in this entry.

## 5.6 Ligand geometry [i](#)

Of 4 ligands modelled in this entry, 1 is monoatomic - leaving 3 for Mogul analysis.

In the following table, the Counts columns list the number of bonds (or angles) for which Mogul statistics could be retrieved, the number of bonds (or angles) that are observed in the model and the number of bonds (or angles) that are defined in the Chemical Component Dictionary. The Link column lists molecule types, if any, to which the group is linked. The Z score for a bond length (or angle) is the number of standard deviations the observed value is removed from the expected value. A bond length (or angle) with  $|Z| > 2$  is considered an outlier worth inspection. RMSZ is the root-mean-square of all Z scores of the bond lengths (or angles).

Mol	Type	Chain	Res	Link	Bond lengths			Bond angles		
					Counts	RMSZ	# Z  > 2	Counts	RMSZ	# Z  > 2
6	POU	B	502	-	37,39,39	2.35	8 (21%)	44,57,57	2.12	9 (20%)
5	GDP	B	501	-	24,30,30	1.39	3 (12%)	31,47,47	2.04	8 (25%)
3	GTP	A	501	4	26,34,34	1.34	3 (11%)	33,54,54	1.87	7 (21%)

In the following table, the Chirals column lists the number of chiral outliers, the number of chiral centers analysed, the number of these observed in the model and the number defined in the Chemical Component Dictionary. Similar counts are reported in the Torsion and Rings columns. '-' means no outliers of that kind were identified.

Mol	Type	Chain	Res	Link	Chirals	Torsions	Rings
6	POU	B	502	-	-	6/54/76/76	0/1/2/2
5	GDP	B	501	-	-	5/12/32/32	0/3/3/3
3	GTP	A	501	4	-	4/18/38/38	0/3/3/3

All (14) bond length outliers are listed below:

Mol	Chain	Res	Type	Atoms	Z	Observed(Å)	Ideal(Å)
6	B	502	POU	C22-C21	10.37	1.55	1.33
6	B	502	POU	C2-C1	-5.57	1.38	1.52
5	B	501	GDP	O4'-C1'	4.63	1.47	1.41

*Continued on next page...*

Continued from previous page...

Mol	Chain	Res	Type	Atoms	Z	Observed(Å)	Ideal(Å)
3	A	501	GTP	C6-C5	3.09	1.46	1.41
6	B	502	POU	O91-C9	3.06	1.44	1.39
6	B	502	POU	C9-C8	-2.96	1.50	1.53
5	B	501	GDP	C6-C5	2.83	1.46	1.41
3	A	501	GTP	PG-O3G	-2.68	1.44	1.54
6	B	502	POU	O11-C11	2.42	1.47	1.43
3	A	501	GTP	C2'-C1'	-2.38	1.50	1.53
6	B	502	POU	C23-C22	2.32	1.53	1.50
5	B	501	GDP	C2'-C1'	-2.29	1.50	1.53
6	B	502	POU	C14-C13	2.27	1.57	1.52
6	B	502	POU	C14-C15	2.03	1.56	1.53

All (24) bond angle outliers are listed below:

Mol	Chain	Res	Type	Atoms	Z	Observed(°)	Ideal(°)
6	B	502	POU	C13-C12-C11	-6.97	103.68	114.37
6	B	502	POU	O9-C9-C8	5.22	113.07	105.50
5	B	501	GDP	C6-C5-C4	-5.16	115.88	120.80
6	B	502	POU	C15-O15-C1	5.11	126.40	116.67
5	B	501	GDP	C6-N1-C2	4.65	123.31	115.93
3	A	501	GTP	C6-C5-C4	-4.45	116.55	120.80
3	A	501	GTP	C2-N3-C4	4.39	120.37	115.36
5	B	501	GDP	C1'-N9-C4	-4.15	119.35	126.64
3	A	501	GTP	C6-N1-C2	4.04	122.34	115.93
3	A	501	GTP	C5-C6-N1	-4.01	117.95	123.43
5	B	501	GDP	C5-C6-N1	-3.73	118.33	123.43
6	B	502	POU	O15-C15-C14	3.73	114.88	106.64
5	B	501	GDP	N3-C2-N1	-3.50	122.56	127.22
3	A	501	GTP	N3-C2-N1	-3.11	123.08	127.22
5	B	501	GDP	C2-N3-C4	3.08	118.88	115.36
6	B	502	POU	O15-C15-C21	3.04	117.81	109.48
6	B	502	POU	C3-C4-C5	-3.01	107.79	114.76
6	B	502	POU	O91-C9-O9	-2.43	103.58	109.54
5	B	501	GDP	O3B-PB-O3A	2.33	112.46	104.64
3	A	501	GTP	C4-C5-N7	-2.23	107.08	109.40
6	B	502	POU	C25-C21-C22	-2.17	117.75	123.45
6	B	502	POU	O9-C5-C6	2.14	112.97	108.94
5	B	501	GDP	PA-O3A-PB	-2.08	125.68	132.83
3	A	501	GTP	C1'-N9-C4	-2.05	123.04	126.64

There are no chirality outliers.

All (15) torsion outliers are listed below:

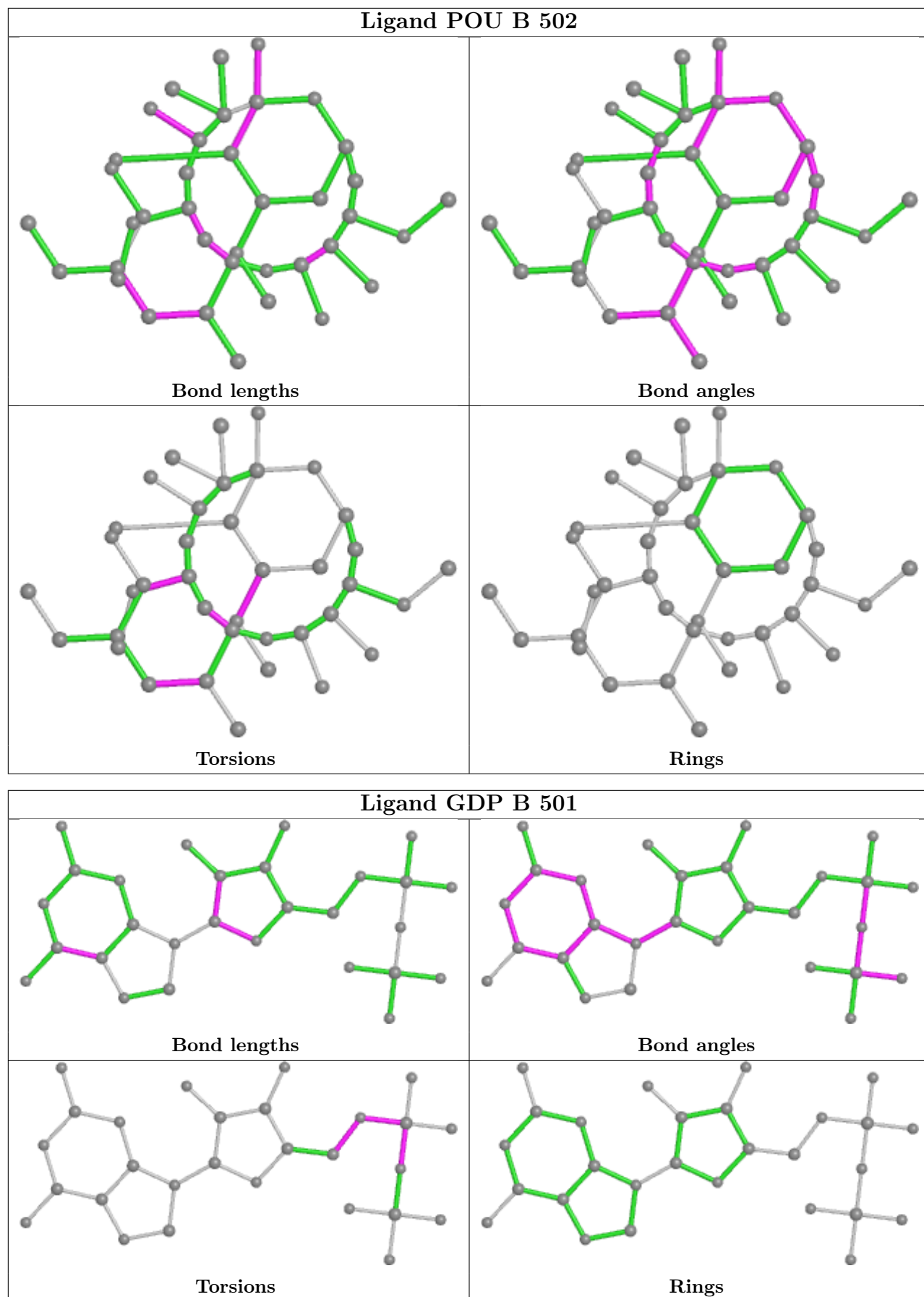
Mol	Chain	Res	Type	Atoms
5	B	501	GDP	C5'-O5'-PA-O1A
5	B	501	GDP	C5'-O5'-PA-O2A
3	A	501	GTP	C5'-O5'-PA-O1A
3	A	501	GTP	C5'-O5'-PA-O2A
6	B	502	POU	C13-C14-C15-O15
6	B	502	POU	C8-C7-O7-C17
6	B	502	POU	C15-C21-C22-C23
6	B	502	POU	C25-C21-C22-C23
3	A	501	GTP	PB-O3B-PG-O3G
6	B	502	POU	C14-C13-O13-C20
6	B	502	POU	C6-C7-O7-C17
5	B	501	GDP	C5'-O5'-PA-O3A
3	A	501	GTP	C5'-O5'-PA-O3A
5	B	501	GDP	PB-O3A-PA-O2A
5	B	501	GDP	C4'-C5'-O5'-PA

There are no ring outliers.

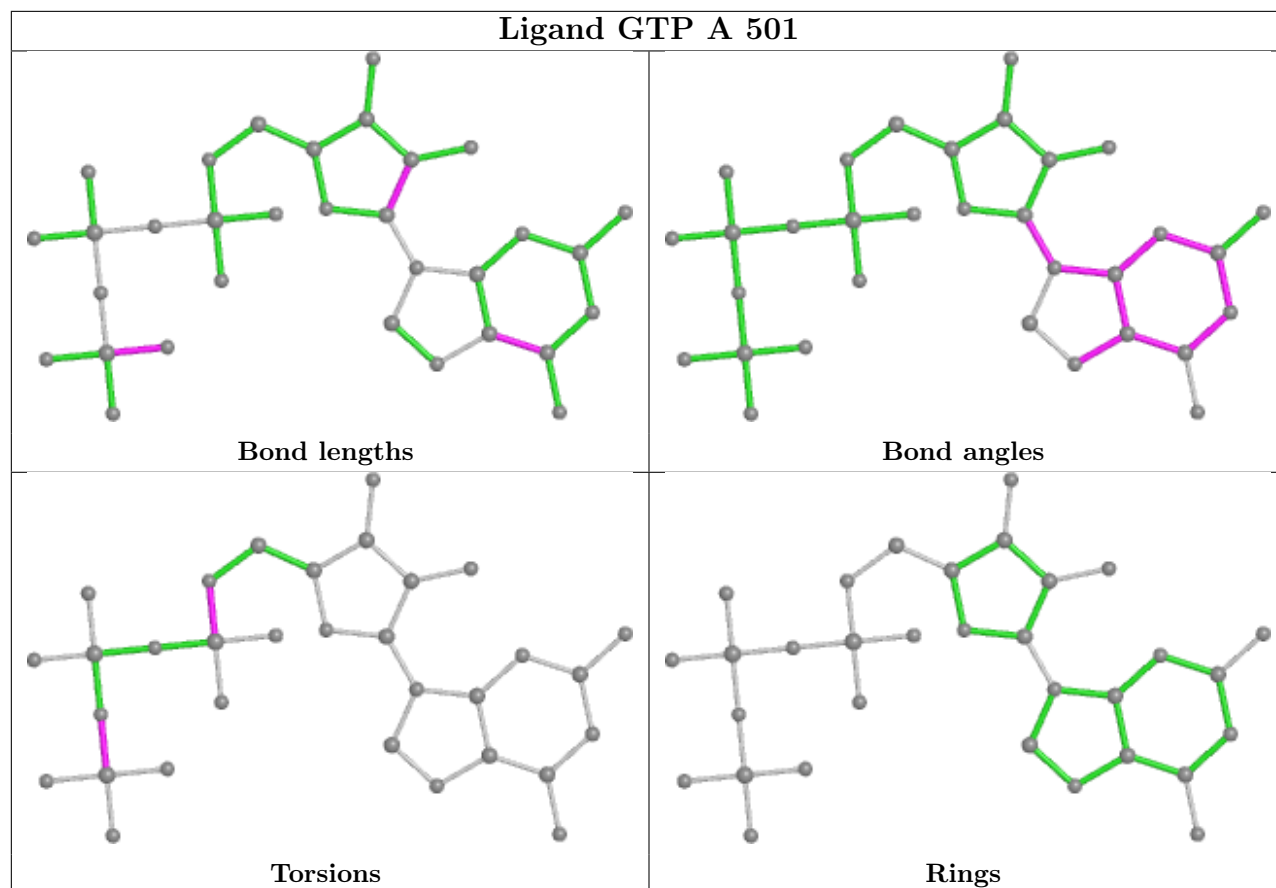
3 monomers are involved in 7 short contacts:

Mol	Chain	Res	Type	Clashes	Symm-Clashes
6	B	502	POU	5	0
5	B	501	GDP	1	0
3	A	501	GTP	1	0

The following is a two-dimensional graphical depiction of Mogul quality analysis of bond lengths, bond angles, torsion angles, and ring geometry for all instances of the Ligand of Interest. In addition, ligands with molecular weight > 250 and outliers as shown on the validation Tables will also be included. For torsion angles, if less than 5% of the Mogul distribution of torsion angles is within 10 degrees of the torsion angle in question, then that torsion angle is considered an outlier. Any bond that is central to one or more torsion angles identified as an outlier by Mogul will be highlighted in the graph. For rings, the root-mean-square deviation (RMSD) between the ring in question and similar rings identified by Mogul is calculated over all ring torsion angles. If the average RMSD is greater than 60 degrees and the minimal RMSD between the ring in question and any Mogul-identified rings is also greater than 60 degrees, then that ring is considered an outlier. The outliers are highlighted in purple. The color gray indicates Mogul did not find sufficient equivalents in the CSD to analyse the geometry.







## 5.7 Other polymers [\(i\)](#)

There are no such residues in this entry.

## 5.8 Polymer linkage issues [\(i\)](#)

There are no chain breaks in this entry.

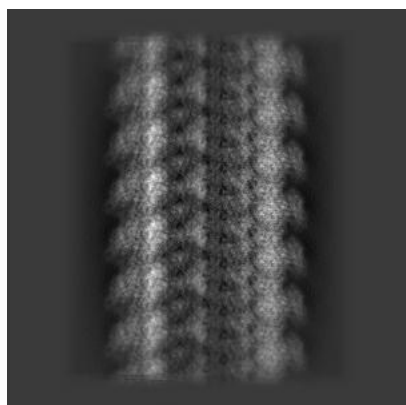
## 6 Map visualisation [i](#)

This section contains visualisations of the EMDB entry EMD-8320. These allow visual inspection of the internal detail of the map and identification of artifacts.

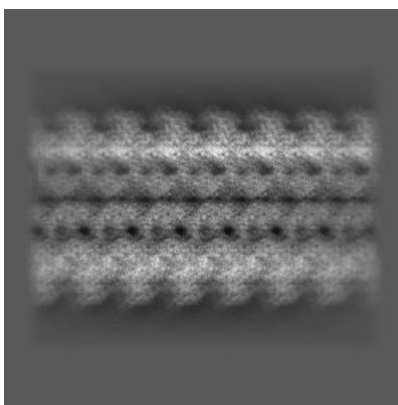
No raw map or half-maps were deposited for this entry and therefore no images, graphs, etc. pertaining to the raw map can be shown.

### 6.1 Orthogonal projections [i](#)

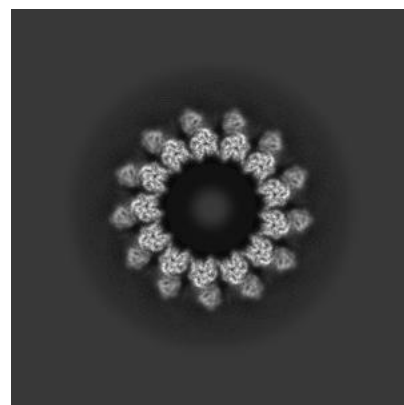
#### 6.1.1 Primary map



X



Y

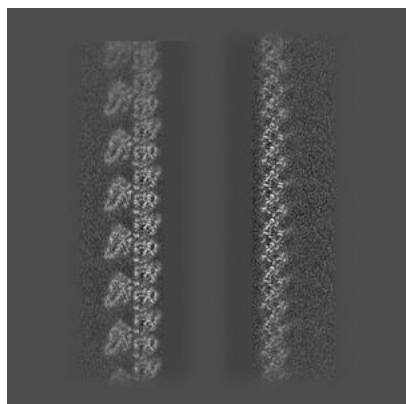


Z

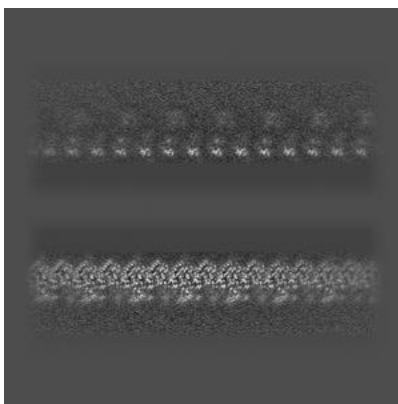
The images above show the map projected in three orthogonal directions.

### 6.2 Central slices [i](#)

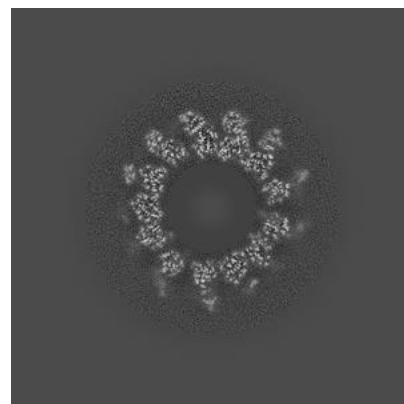
#### 6.2.1 Primary map



X Index: 256



Y Index: 256

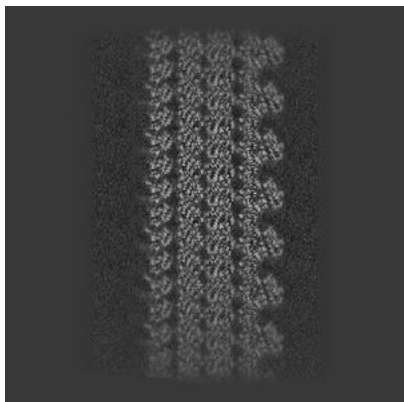


Z Index: 256

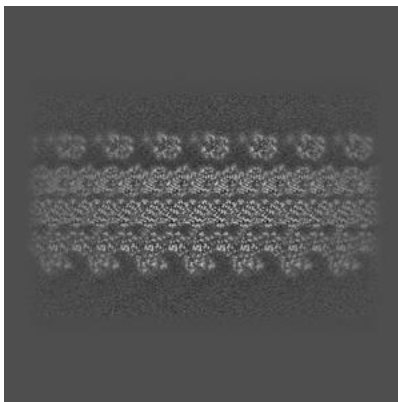
The images above show central slices of the map in three orthogonal directions.

## 6.3 Largest variance slices [i](#)

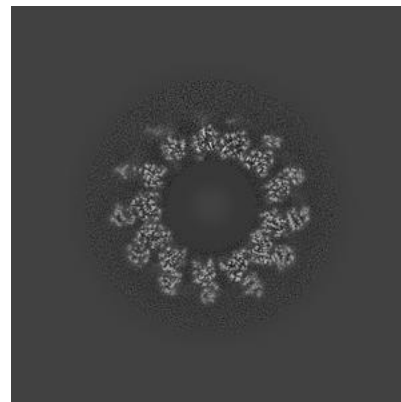
### 6.3.1 Primary map



X Index: 331



Y Index: 335

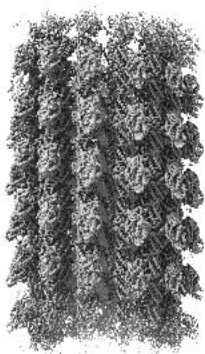


Z Index: 284

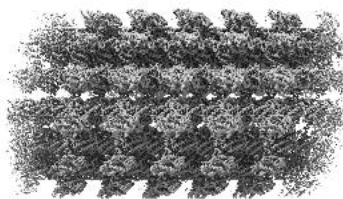
The images above show the largest variance slices of the map in three orthogonal directions.

## 6.4 Orthogonal surface views [i](#)

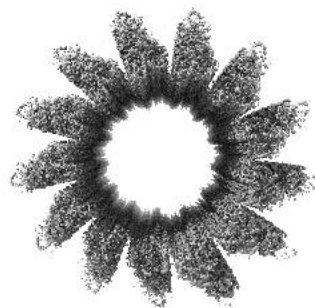
### 6.4.1 Primary map



X



Y



Z

The images above show the 3D surface view of the map at the recommended contour level 5.83. These images, in conjunction with the slice images, may facilitate assessment of whether an appropriate contour level has been provided.

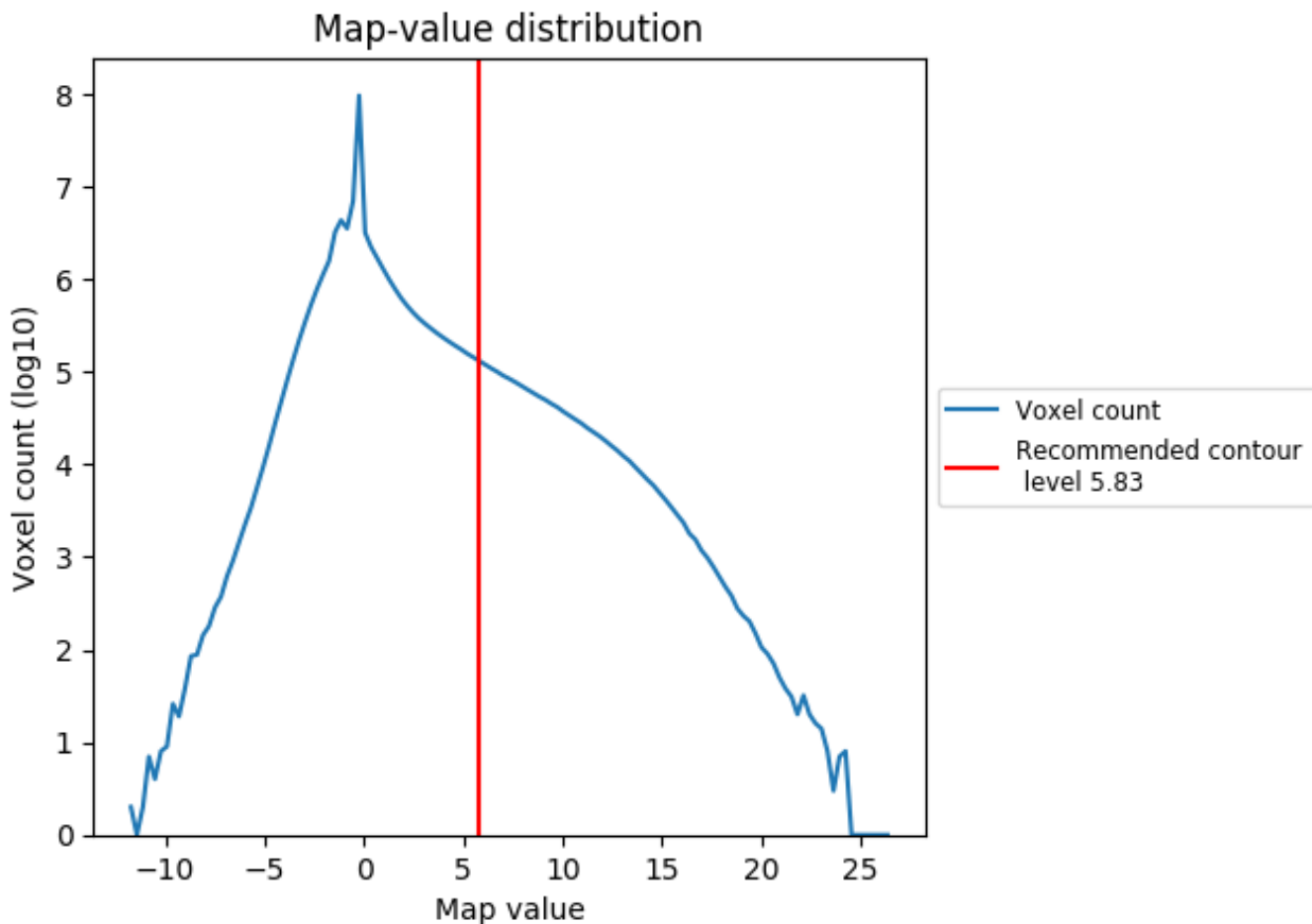
## 6.5 Mask visualisation

This section was not generated. No masks/segmentation were deposited.

## 7 Map analysis [i](#)

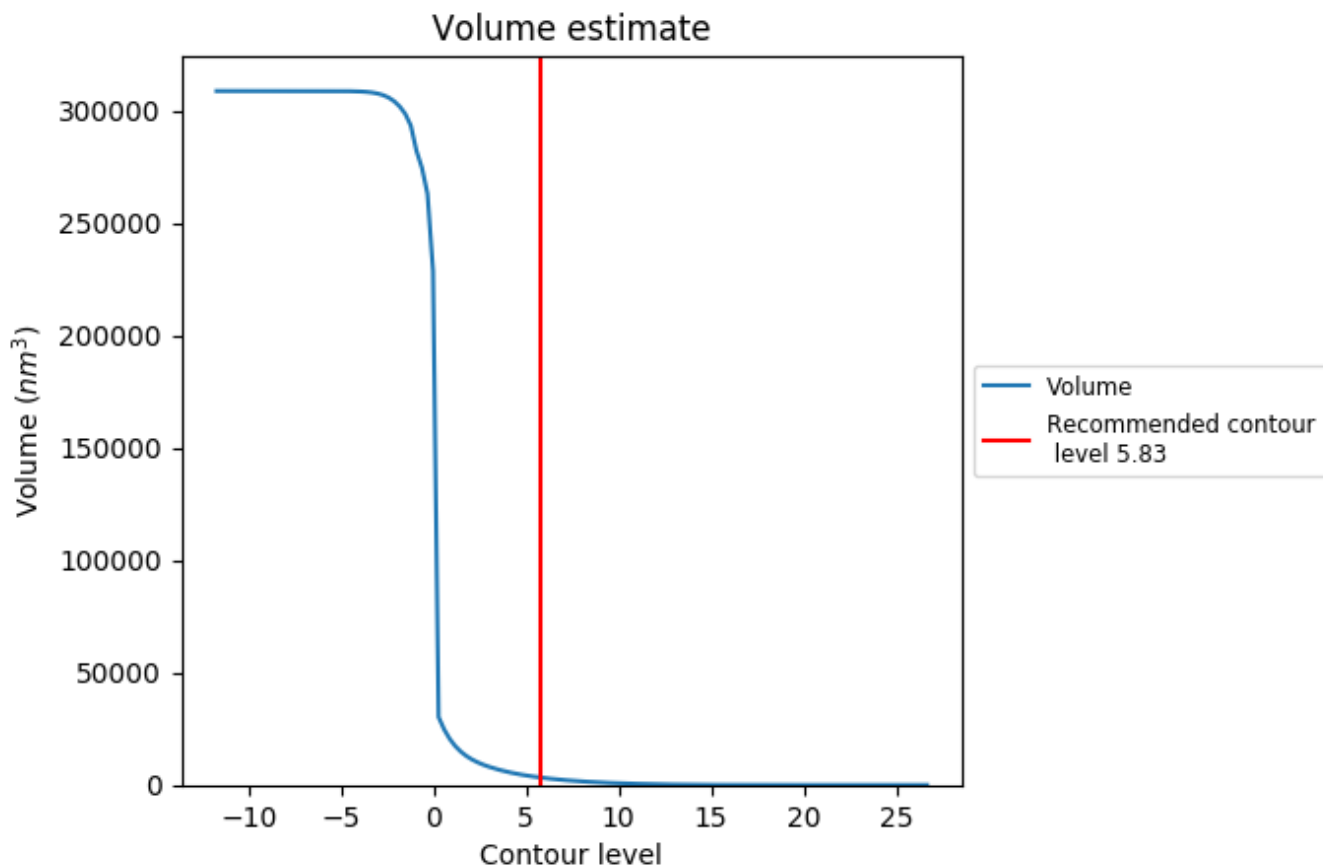
This section contains the results of statistical analysis of the map.

### 7.1 Map-value distribution [i](#)



The map-value distribution is plotted in 128 intervals along the x-axis. The y-axis is logarithmic. A spike in this graph at zero usually indicates that the volume has been masked.

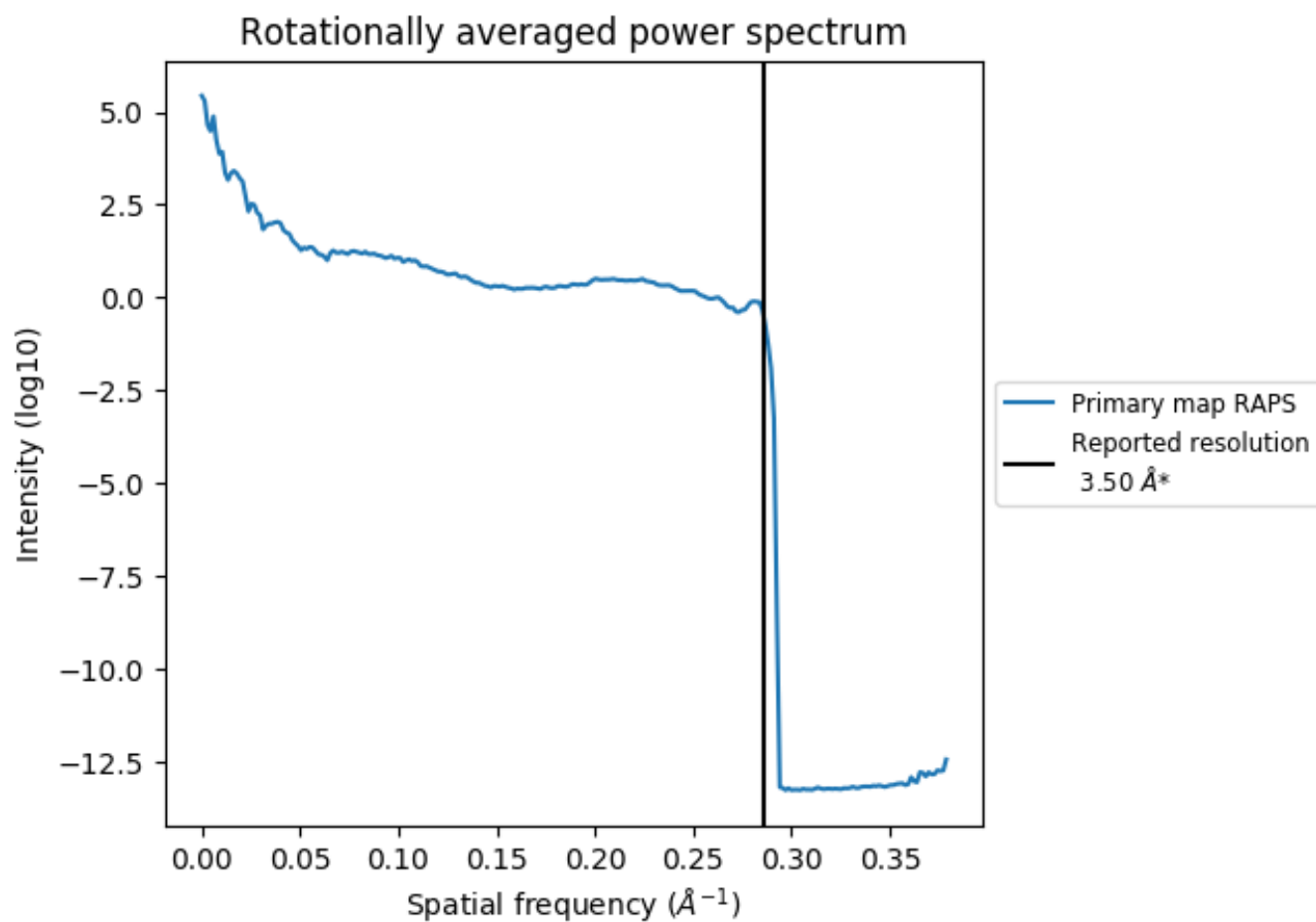
## 7.2 Volume estimate [i](#)



The volume at the recommended contour level is 3249  $\text{nm}^3$ ; this corresponds to an approximate mass of 2935 kDa.

The volume estimate graph shows how the enclosed volume varies with the contour level. The recommended contour level is shown as a vertical line and the intersection between the line and the curve gives the volume of the enclosed surface at the given level.

### 7.3 Rotationally averaged power spectrum i



\*Reported resolution corresponds to spatial frequency of 0.286 Å<sup>-1</sup>

## 8 Fourier-Shell correlation

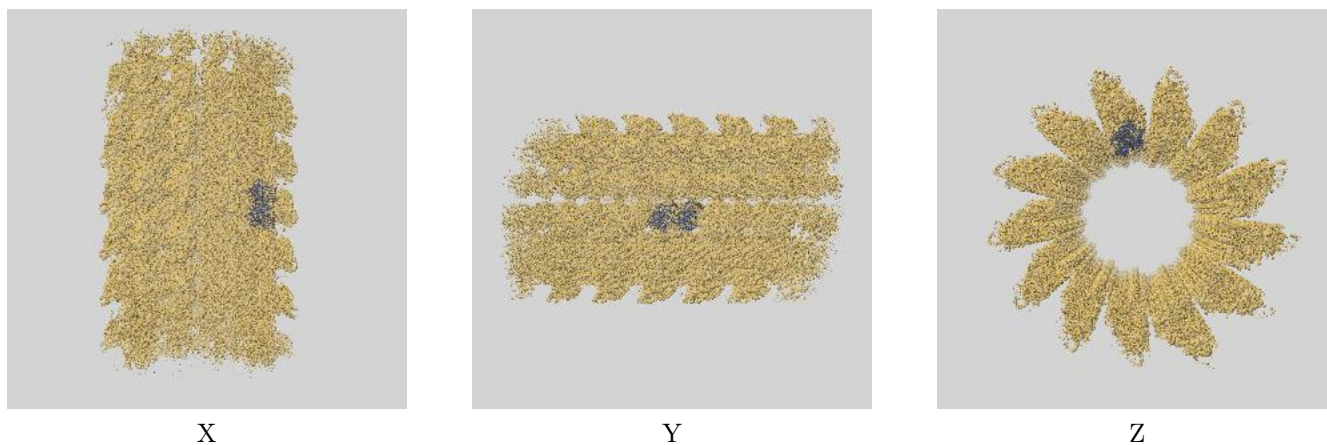
This section was not generated. No FSC curve or half-maps provided.



## 9 Map-model fit [i](#)

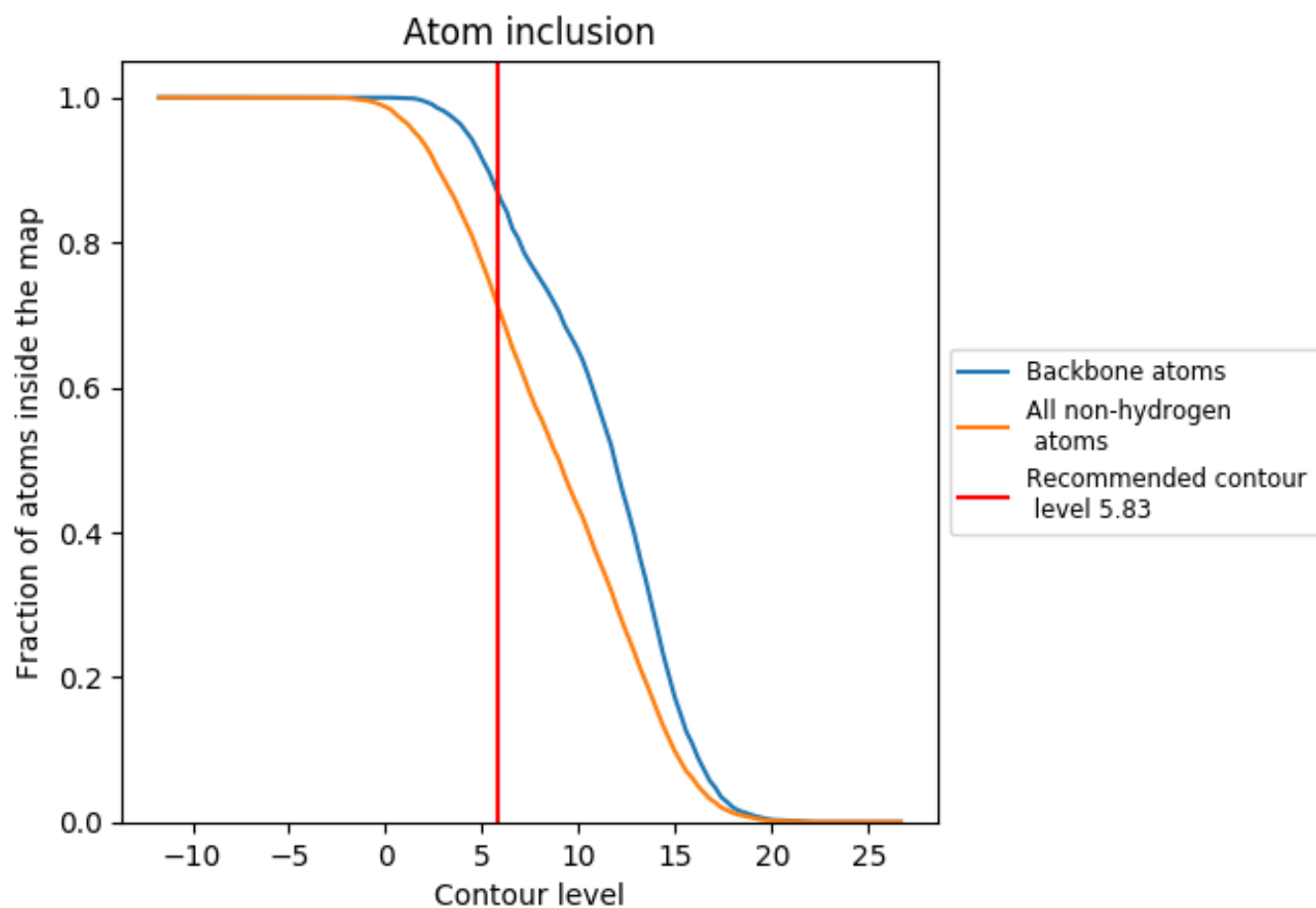
This section contains information regarding the fit between EMDB map EMD-8320 and PDB model 5SYC. Per-residue inclusion information can be found in section 3 on page 6.

### 9.1 Map-model overlay [i](#)



The images above show the 3D surface view of the map at the recommended contour level 5.83 at 50% transparency in yellow overlaid with a ribbon representation of the model coloured in blue. These images allow for the visual assessment of the quality of fit between the atomic model and the map.

## 9.2 Atom inclusion [i](#)



At the recommended contour level, 87% of all backbone atoms, 71% of all non-hydrogen atoms, are inside the map.