



Full wwPDB X-ray Structure Validation Report ⓘ

Dec 15, 2022 – 03:27 pm GMT

PDB ID : 6SYL
Title : STRUCTURE OF ESTER-HYDROLASE EH3 FROM THE METAGENOME OF MARINE SEDIMENTS AT MILAZZO HARBOR (SICILY, ITALY) COMPLEXED WITH A DERIVATIVE OF BUTYL 4-NITROPHENYL HEXYLPHOSPHONATE
Authors : Cea-Rama, I.; Sanz-Aparicio, J.
Deposited on : 2019-09-30
Resolution : 2.95 Å(reported)

This is a Full wwPDB X-ray Structure Validation Report for a publicly released PDB entry.

We welcome your comments at validation@mail.wwpdb.org

A user guide is available at

<https://www.wwpdb.org/validation/2017/XrayValidationReportHelp>

with specific help available everywhere you see the ⓘ symbol.

The types of validation reports are described at

<http://www.wwpdb.org/validation/2017/FAQs#types>.

The following versions of software and data (see [references ⓘ](#)) were used in the production of this report:

MolProbity : 4.02b-467
Mogul : 1.8.4, CSD as541be (2020)
Xtriage (Phenix) : 1.13
EDS : 2.31.3
Percentile statistics : 20191225.v01 (using entries in the PDB archive December 25th 2019)
Refmac : 5.8.0158
CCP4 : 7.0.044 (Gargrove)
Ideal geometry (proteins) : Engh & Huber (2001)
Ideal geometry (DNA, RNA) : Parkinson et al. (1996)
Validation Pipeline (wwPDB-VP) : 2.31.3

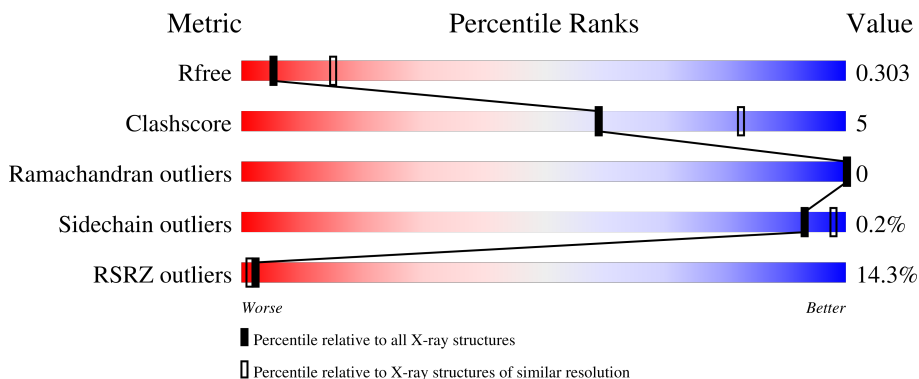
1 Overall quality at a glance

The following experimental techniques were used to determine the structure:

X-RAY DIFFRACTION

The reported resolution of this entry is 2.95 Å.

Percentile scores (ranging between 0-100) for global validation metrics of the entry are shown in the following graphic. The table shows the number of entries on which the scores are based.



Metric	Whole archive (#Entries)	Similar resolution (#Entries, resolution range(Å))
R_{free}	130704	3104 (3.00-2.92)
Clashscore	141614	3462 (3.00-2.92)
Ramachandran outliers	138981	3340 (3.00-2.92)
Sidechain outliers	138945	3343 (3.00-2.92)
RSRZ outliers	127900	2986 (3.00-2.92)

The table below summarises the geometric issues observed across the polymeric chains and their fit to the electron density. The red, orange, yellow and green segments of the lower bar indicate the fraction of residues that contain outliers for ≥ 3 , 2, 1 and 0 types of geometric quality criteria respectively. A grey segment represents the fraction of residues that are not modelled. The numeric value for each fraction is indicated below the corresponding segment, with a dot representing fractions $\leq 5\%$. The upper red bar (where present) indicates the fraction of residues that have poor fit to the electron density. The numeric value is given above the bar.

Mol	Chain	Length	Quality of chain
1	A	368	 12% 82% 11% 8%
1	B	368	 14% 82% 11% 8%

2 Entry composition i

There are 3 unique types of molecules in this entry. The entry contains 5197 atoms, of which 0 are hydrogens and 0 are deuteriums.

In the tables below, the ZeroOcc column contains the number of atoms modelled with zero occupancy, the AltConf column contains the number of residues with at least one atom in alternate conformation and the Trace column contains the number of residues modelled with at most 2 atoms.

- Molecule 1 is a protein called Esterase.

Mol	Chain	Residues	Atoms					ZeroOcc	AltConf	Trace
			Total	C	N	O	S			
1	A	339	2572	1607	442	497	26	0	0	0
1	B	340	2576	1609	443	498	26	0	0	0

There are 42 discrepancies between the modelled and reference sequences:

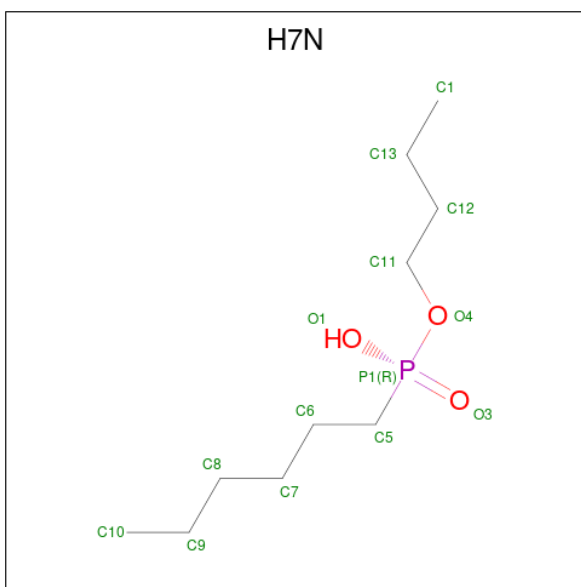
Chain	Residue	Modelled	Actual	Comment	Reference
A	-18	MET	-	initiating methionine	UNP A0A2K8JN75
A	-17	HIS	-	expression tag	UNP A0A2K8JN75
A	-16	HIS	-	expression tag	UNP A0A2K8JN75
A	-15	HIS	-	expression tag	UNP A0A2K8JN75
A	-14	HIS	-	expression tag	UNP A0A2K8JN75
A	-13	HIS	-	expression tag	UNP A0A2K8JN75
A	-12	HIS	-	expression tag	UNP A0A2K8JN75
A	-11	HIS	-	expression tag	UNP A0A2K8JN75
A	-10	HIS	-	expression tag	UNP A0A2K8JN75
A	-9	HIS	-	expression tag	UNP A0A2K8JN75
A	-8	HIS	-	expression tag	UNP A0A2K8JN75
A	-7	LEU	-	expression tag	UNP A0A2K8JN75
A	-6	GLU	-	expression tag	UNP A0A2K8JN75
A	-5	VAL	-	expression tag	UNP A0A2K8JN75
A	-4	LEU	-	expression tag	UNP A0A2K8JN75
A	-3	PHE	-	expression tag	UNP A0A2K8JN75
A	-2	GLN	-	expression tag	UNP A0A2K8JN75
A	-1	GLY	-	expression tag	UNP A0A2K8JN75
A	0	PRO	-	expression tag	UNP A0A2K8JN75
A	1	SER	-	expression tag	UNP A0A2K8JN75
A	349	ALA	-	insertion	UNP A0A2K8JN75
B	-18	MET	-	initiating methionine	UNP A0A2K8JN75
B	-17	HIS	-	expression tag	UNP A0A2K8JN75
B	-16	HIS	-	expression tag	UNP A0A2K8JN75
B	-15	HIS	-	expression tag	UNP A0A2K8JN75

Continued on next page...

Continued from previous page...

Chain	Residue	Modelled	Actual	Comment	Reference
B	-14	HIS	-	expression tag	UNP A0A2K8JN75
B	-13	HIS	-	expression tag	UNP A0A2K8JN75
B	-12	HIS	-	expression tag	UNP A0A2K8JN75
B	-11	HIS	-	expression tag	UNP A0A2K8JN75
B	-10	HIS	-	expression tag	UNP A0A2K8JN75
B	-9	HIS	-	expression tag	UNP A0A2K8JN75
B	-8	HIS	-	expression tag	UNP A0A2K8JN75
B	-7	LEU	-	expression tag	UNP A0A2K8JN75
B	-6	GLU	-	expression tag	UNP A0A2K8JN75
B	-5	VAL	-	expression tag	UNP A0A2K8JN75
B	-4	LEU	-	expression tag	UNP A0A2K8JN75
B	-3	PHE	-	expression tag	UNP A0A2K8JN75
B	-2	GLN	-	expression tag	UNP A0A2K8JN75
B	-1	GLY	-	expression tag	UNP A0A2K8JN75
B	0	PRO	-	expression tag	UNP A0A2K8JN75
B	1	SER	-	expression tag	UNP A0A2K8JN75
B	349	ALA	-	insertion	UNP A0A2K8JN75

- Molecule 2 is butoxy(hexyl)phosphinic acid (three-letter code: H7N) (formula: $C_{10}H_{23}O_3P$).



Mol	Chain	Residues	Atoms			ZeroOcc	AltConf	
			Total	C	O			P
2	A	1	Total	C	O	P	0	0
			13	10	2	1		
2	B	1	Total	C	O	P	0	0
			13	10	2	1		

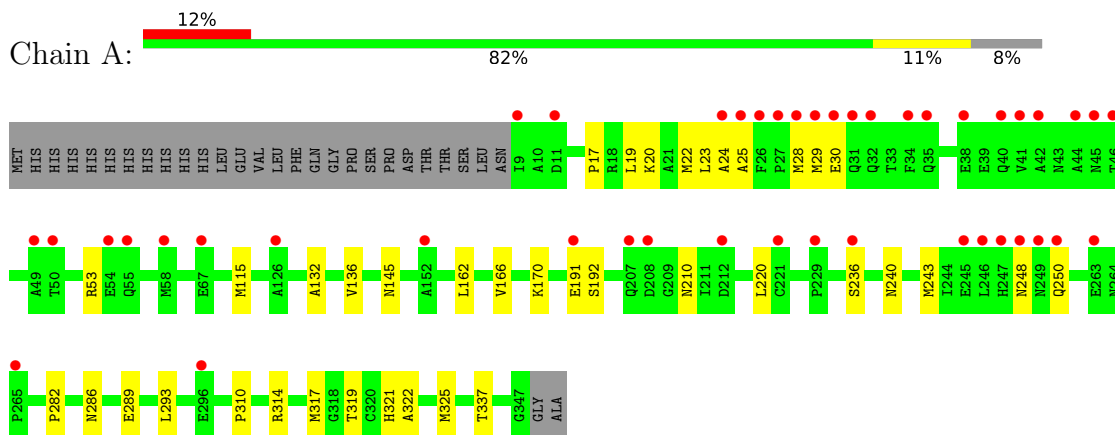
- Molecule 3 is water.

Mol	Chain	Residues	Atoms	ZeroOcc	AltConf
3	A	10	Total O 10 10	0	0
3	B	13	Total O 13 13	0	0

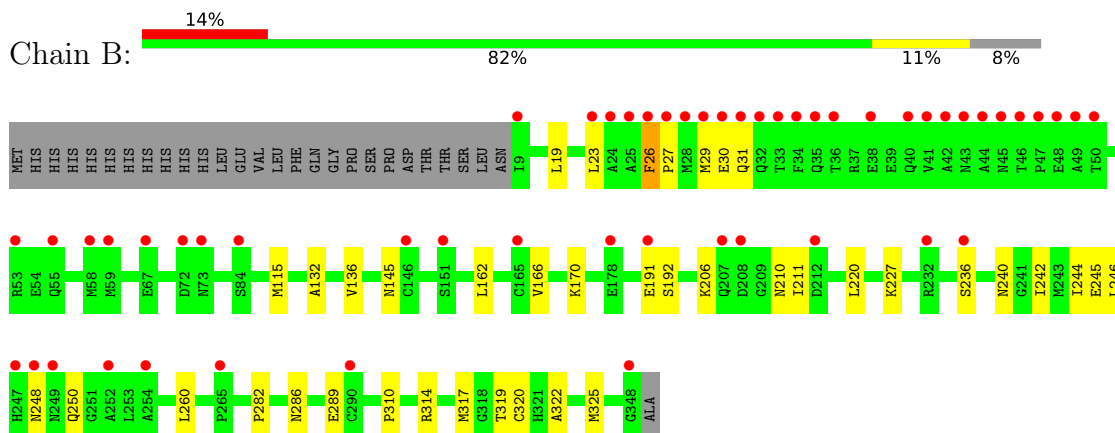
3 Residue-property plots

These plots are drawn for all protein, RNA, DNA and oligosaccharide chains in the entry. The first graphic for a chain summarises the proportions of the various outlier classes displayed in the second graphic. The second graphic shows the sequence view annotated by issues in geometry and electron density. Residues are color-coded according to the number of geometric quality criteria for which they contain at least one outlier: green = 0, yellow = 1, orange = 2 and red = 3 or more. A red dot above a residue indicates a poor fit to the electron density ($RSRZ > 2$). Stretches of 2 or more consecutive residues without any outlier are shown as a green connector. Residues present in the sample, but not in the model, are shown in grey.

- Molecule 1: Esterase



- Molecule 1: Esterase



4 Data and refinement statistics

Property	Value	Source
Space group	C 1 2 1	Depositor
Cell constants a, b, c, α , β , γ	183.62Å 51.32Å 70.40Å 90.00° 93.89° 90.00°	Depositor
Resolution (Å)	45.84 – 2.95 45.80 – 2.95	Depositor EDS
% Data completeness (in resolution range)	99.1 (45.84-2.95) 99.1 (45.80-2.95)	Depositor EDS
R_{merge}	0.24	Depositor
R_{sym}	(Not available)	Depositor
$\langle I/\sigma(I) \rangle$ ¹	3.60 (at 2.96Å)	Xtrriage
Refinement program	REFMAC 5.8.0238	Depositor
R, R_{free}	0.252 , 0.305 0.253 , 0.303	Depositor DCC
R_{free} test set	732 reflections (5.24%)	wwPDB-VP
Wilson B-factor (Å ²)	27.9	Xtrriage
Anisotropy	0.866	Xtrriage
Bulk solvent k_{sol} (e/Å ³), B_{sol} (Å ²)	0.36 , 32.8	EDS
L-test for twinning ²	$\langle L \rangle = 0.52$, $\langle L^2 \rangle = 0.35$	Xtrriage
Estimated twinning fraction	No twinning to report.	Xtrriage
F_o, F_c correlation	0.87	EDS
Total number of atoms	5197	wwPDB-VP
Average B, all atoms (Å ²)	25.0	wwPDB-VP

Xtrriage's analysis on translational NCS is as follows: *The largest off-origin peak in the Patterson function is 8.62% of the height of the origin peak. No significant pseudotranslation is detected.*

¹Intensities estimated from amplitudes.

²Theoretical values of $\langle |L| \rangle$, $\langle L^2 \rangle$ for acentric reflections are 0.5, 0.333 respectively for untwinned datasets, and 0.375, 0.2 for perfectly twinned datasets.

5 Model quality [i](#)

5.1 Standard geometry [i](#)

Bond lengths and bond angles in the following residue types are not validated in this section: H7N

The Z score for a bond length (or angle) is the number of standard deviations the observed value is removed from the expected value. A bond length (or angle) with $|Z| > 5$ is considered an outlier worth inspection. RMSZ is the root-mean-square of all Z scores of the bond lengths (or angles).

Mol	Chain	Bond lengths		Bond angles	
		RMSZ	# Z >5	RMSZ	# Z >5
1	A	0.66	0/2623	0.82	0/3552
1	B	0.66	0/2627	0.82	0/3557
All	All	0.66	0/5250	0.82	0/7109

There are no bond length outliers.

There are no bond angle outliers.

There are no chirality outliers.

There are no planarity outliers.

5.2 Too-close contacts [i](#)

In the following table, the Non-H and H(model) columns list the number of non-hydrogen atoms and hydrogen atoms in the chain respectively. The H(added) column lists the number of hydrogen atoms added and optimized by MolProbity. The Clashes column lists the number of clashes within the asymmetric unit, whereas Symm-Clashes lists symmetry-related clashes.

Mol	Chain	Non-H	H(model)	H(added)	Clashes	Symm-Clashes
1	A	2572	0	2513	23	0
1	B	2576	0	2516	25	0
2	A	13	0	0	0	0
2	B	13	0	0	1	0
3	A	10	0	0	0	0
3	B	13	0	0	0	0
All	All	5197	0	5029	48	0

The all-atom clashscore is defined as the number of clashes found per 1000 atoms (including hydrogen atoms). The all-atom clashscore for this structure is 5.

All (48) close contacts within the same asymmetric unit are listed below, sorted by their clash

magnitude.

Atom-1	Atom-2	Interatomic distance (Å)	Clash overlap (Å)
1:A:28:MET:HE1	1:A:53:ARG:HA	1.65	0.78
1:B:23:LEU:HD11	1:B:320:CYS:SG	2.30	0.71
1:B:244:ILE:HD12	1:B:246:LEU:HD21	1.73	0.70
1:A:29:MET:O	1:A:30:GLU:HG2	1.92	0.69
1:B:248:ASN:HB2	1:B:250:GLN:HG2	1.76	0.66
1:B:30:GLU:O	1:B:31:GLN:HG2	1.98	0.64
1:B:282:PRO:HA	1:B:310:PRO:O	1.97	0.64
1:A:282:PRO:HA	1:A:310:PRO:O	1.98	0.63
1:A:28:MET:CE	1:A:53:ARG:HA	2.28	0.62
1:A:22:MET:HG2	1:A:22:MET:O	2.01	0.59
1:B:23:LEU:CD2	1:B:242:ILE:HG23	2.32	0.59
1:B:322:ALA:O	1:B:325:MET:HG2	2.02	0.59
1:B:30:GLU:O	1:B:31:GLN:CG	2.51	0.58
1:A:322:ALA:O	1:A:325:MET:HG2	2.03	0.58
1:A:28:MET:HE1	1:A:53:ARG:CA	2.35	0.55
1:A:170:LYS:HE2	1:A:210:ASN:HD22	1.72	0.54
1:A:191:GLU:HA	1:A:220:LEU:O	2.08	0.54
1:A:192:SER:HB2	1:A:321:HIS:NE2	2.23	0.53
1:B:162:LEU:O	1:B:166:VAL:HG23	2.10	0.52
1:A:132:ALA:HA	1:A:136:VAL:O	2.11	0.50
1:B:29:MET:HE2	1:B:245:GLU:H	1.76	0.50
1:B:132:ALA:HA	1:B:136:VAL:O	2.12	0.49
1:B:191:GLU:HA	1:B:220:LEU:O	2.12	0.49
1:A:24:ALA:O	1:A:25:ALA:HB3	2.13	0.49
1:A:162:LEU:O	1:A:166:VAL:HG23	2.13	0.49
1:A:236:SER:O	1:A:240:ASN:HB2	2.12	0.48
1:B:29:MET:HE1	1:B:244:ILE:HA	1.95	0.48
1:B:19:LEU:CD1	1:B:319:THR:HA	2.44	0.48
1:B:170:LYS:HE3	1:B:210:ASN:HD22	1.80	0.47
1:B:236:SER:O	1:B:240:ASN:HB2	2.14	0.47
1:A:19:LEU:CD1	1:A:319:THR:HA	2.45	0.46
1:A:23:LEU:HD21	1:A:243:MET:HB2	1.98	0.46
1:A:286:ASN:ND2	1:A:314:ARG:HE	2.15	0.44
1:A:248:ASN:HB2	1:A:250:GLN:HG2	1.99	0.44
1:B:23:LEU:HD23	1:B:242:ILE:HG23	2.00	0.43
1:A:115:MET:O	1:A:145:ASN:HB3	2.17	0.43
1:B:115:MET:O	1:B:145:ASN:HB3	2.18	0.43
1:A:220:LEU:HD21	1:A:337:THR:CG2	2.48	0.42
1:B:192:SER:CB	2:B:401:H7N:C11	2.99	0.41
1:A:289:GLU:HB2	1:A:317:MET:HA	2.02	0.41
1:A:17:PRO:HA	1:A:20:LYS:HD2	2.02	0.41

Continued on next page...

Continued from previous page...

Atom-1	Atom-2	Interatomic distance (Å)	Clash overlap (Å)
1:B:206:LYS:HA	1:B:211:ILE:HB	2.02	0.41
1:B:286:ASN:ND2	1:B:314:ARG:HE	2.19	0.41
1:B:26:PHE:HA	1:B:27:PRO:HD3	1.56	0.41
1:B:29:MET:O	1:B:30:GLU:C	2.56	0.41
1:B:227:LYS:HB2	1:B:260:LEU:HD21	2.03	0.41
1:B:289:GLU:HB2	1:B:317:MET:HA	2.03	0.41
1:A:293:LEU:HD12	1:A:321:HIS:CE1	2.56	0.40

There are no symmetry-related clashes.

5.3 Torsion angles [i](#)

5.3.1 Protein backbone [i](#)

In the following table, the Percentiles column shows the percent Ramachandran outliers of the chain as a percentile score with respect to all X-ray entries followed by that with respect to entries of similar resolution.

The Analysed column shows the number of residues for which the backbone conformation was analysed, and the total number of residues.

Mol	Chain	Analysed	Favoured	Allowed	Outliers	Percentiles	
1	A	337/368 (92%)	314 (93%)	23 (7%)	0	100	100
1	B	338/368 (92%)	320 (95%)	18 (5%)	0	100	100
All	All	675/736 (92%)	634 (94%)	41 (6%)	0	100	100

There are no Ramachandran outliers to report.

5.3.2 Protein sidechains [i](#)

In the following table, the Percentiles column shows the percent sidechain outliers of the chain as a percentile score with respect to all X-ray entries followed by that with respect to entries of similar resolution.

The Analysed column shows the number of residues for which the sidechain conformation was analysed, and the total number of residues.

Mol	Chain	Analysed	Rotameric	Outliers	Percentiles	
1	A	272/298 (91%)	272 (100%)	0	100	100

Continued on next page...

Continued from previous page...

Mol	Chain	Analysed	Rotameric	Outliers	Percentiles	
1	B	272/298 (91%)	271 (100%)	1 (0%)	91	96
All	All	544/596 (91%)	543 (100%)	1 (0%)	93	98

All (1) residues with a non-rotameric sidechain are listed below:

Mol	Chain	Res	Type
1	B	26	PHE

Sometimes sidechains can be flipped to improve hydrogen bonding and reduce clashes. All (1) such sidechains are listed below:

Mol	Chain	Res	Type
1	B	247	HIS

5.3.3 RNA [i](#)

There are no RNA molecules in this entry.

5.4 Non-standard residues in protein, DNA, RNA chains [i](#)

There are no non-standard protein/DNA/RNA residues in this entry.

5.5 Carbohydrates [i](#)

There are no monosaccharides in this entry.

5.6 Ligand geometry [i](#)

2 ligands are modelled in this entry.

In the following table, the Counts columns list the number of bonds (or angles) for which Mogul statistics could be retrieved, the number of bonds (or angles) that are observed in the model and the number of bonds (or angles) that are defined in the Chemical Component Dictionary. The Link column lists molecule types, if any, to which the group is linked. The Z score for a bond length (or angle) is the number of standard deviations the observed value is removed from the expected value. A bond length (or angle) with $|Z| > 2$ is considered an outlier worth inspection. RMSZ is the root-mean-square of all Z scores of the bond lengths (or angles).

Mol	Type	Chain	Res	Link	Bond lengths			Bond angles		
					Counts	RMSZ	# Z > 2	Counts	RMSZ	# Z > 2
2	H7N	B	401	1	9,12,13	0.47	0	7,12,15	1.23	1 (14%)
2	H7N	A	401	1	9,12,13	0.51	0	7,12,15	1.01	1 (14%)

In the following table, the Chirals column lists the number of chiral outliers, the number of chiral centers analysed, the number of these observed in the model and the number defined in the Chemical Component Dictionary. Similar counts are reported in the Torsion and Rings columns. '-' means no outliers of that kind were identified.

Mol	Type	Chain	Res	Link	Chirals	Torsions	Rings
2	H7N	B	401	1	-	4/7/11/13	-
2	H7N	A	401	1	-	3/7/11/13	-

There are no bond length outliers.

All (2) bond angle outliers are listed below:

Mol	Chain	Res	Type	Atoms	Z	Observed(°)	Ideal(°)
2	B	401	H7N	O4-C11-C12	2.72	118.05	108.99
2	A	401	H7N	O4-C11-C12	2.00	115.68	108.99

There are no chirality outliers.

All (7) torsion outliers are listed below:

Mol	Chain	Res	Type	Atoms
2	A	401	H7N	C5-C6-C7-C8
2	A	401	H7N	C6-C7-C8-C9
2	B	401	H7N	C6-C7-C8-C9
2	B	401	H7N	C7-C8-C9-C10
2	A	401	H7N	C7-C8-C9-C10
2	B	401	H7N	C5-C6-C7-C8
2	B	401	H7N	C11-C12-C13-C1

There are no ring outliers.

1 monomer is involved in 1 short contact:

Mol	Chain	Res	Type	Clashes	Symm-Clashes
2	B	401	H7N	1	0

5.7 Other polymers [i](#)

There are no such residues in this entry.

5.8 Polymer linkage issues [i](#)

There are no chain breaks in this entry.

6 Fit of model and data

6.1 Protein, DNA and RNA chains

In the following table, the column labelled ‘#RSRZ> 2’ contains the number (and percentage) of RSRZ outliers, followed by percent RSRZ outliers for the chain as percentile scores relative to all X-ray entries and entries of similar resolution. The OWAB column contains the minimum, median, 95th percentile and maximum values of the occupancy-weighted average B-factor per residue. The column labelled ‘Q< 0.9’ lists the number of (and percentage) of residues with an average occupancy less than 0.9.

Mol	Chain	Analysed	<RSRZ>	#RSRZ>2	OWAB(Å ²)	Q<0.9
1	A	339/368 (92%)	1.04	44 (12%) 3 2	10, 21, 50, 75	0
1	B	340/368 (92%)	1.05	53 (15%) 2 1	9, 22, 49, 71	0
All	All	679/736 (92%)	1.05	97 (14%) 2 1	9, 21, 50, 75	0

All (97) RSRZ outliers are listed below:

Mol	Chain	Res	Type	RSRZ
1	B	27	PRO	9.4
1	A	28	MET	7.6
1	B	25	ALA	7.5
1	A	26	PHE	6.3
1	A	29	MET	6.2
1	B	29	MET	5.9
1	A	27	PRO	5.3
1	B	30	GLU	4.9
1	B	348	GLY	4.8
1	B	24	ALA	4.7
1	B	28	MET	4.5
1	A	32	GLN	4.2
1	A	9	ILE	4.1
1	A	30	GLU	4.0
1	B	42	ALA	4.0
1	B	26	PHE	3.8
1	A	31	GLN	3.8
1	A	44	ALA	3.7
1	B	212	ASP	3.6
1	B	247	HIS	3.5
1	A	35	GLN	3.5
1	B	40	GLN	3.3
1	A	45	ASN	3.3
1	B	32	GLN	3.3

Continued on next page...

Continued from previous page...

Mol	Chain	Res	Type	RSRZ
1	B	41	VAL	3.2
1	A	38	GLU	3.2
1	A	55	GLN	3.2
1	B	9	ILE	3.1
1	B	35	GLN	3.1
1	B	248	ASN	3.1
1	A	247	HIS	3.1
1	A	212	ASP	3.0
1	B	31	GLN	3.0
1	B	48	GLU	3.0
1	A	248	ASN	2.9
1	B	207	GLN	2.9
1	A	11	ASP	2.9
1	B	58	MET	2.9
1	B	146	CYS	2.8
1	A	34	PHE	2.8
1	A	41	VAL	2.8
1	B	34	PHE	2.8
1	B	67	GLU	2.8
1	B	33	THR	2.8
1	A	58	MET	2.7
1	A	25	ALA	2.7
1	A	42	ALA	2.7
1	A	54	GLU	2.7
1	A	67	GLU	2.7
1	B	50	THR	2.6
1	B	236	SER	2.6
1	B	55	GLN	2.6
1	A	191	GLU	2.5
1	B	73	ASN	2.5
1	B	38	GLU	2.5
1	A	246	LEU	2.5
1	A	49	ALA	2.5
1	B	84	SER	2.5
1	A	24	ALA	2.5
1	A	207	GLN	2.5
1	A	265	PRO	2.4
1	B	254	ALA	2.4
1	A	263	GLU	2.4
1	A	236	SER	2.4
1	B	23	LEU	2.4
1	A	250	GLN	2.4

Continued on next page...

Continued from previous page...

Mol	Chain	Res	Type	RSRZ
1	B	191	GLU	2.4
1	A	152	ALA	2.4
1	A	50	THR	2.3
1	A	296	GLU	2.3
1	B	249	ASN	2.3
1	B	44	ALA	2.3
1	A	229	PRO	2.3
1	B	232	ARG	2.3
1	B	265	PRO	2.3
1	A	40	GLN	2.3
1	B	36	THR	2.3
1	A	208	ASP	2.2
1	B	53	ARG	2.2
1	A	126	ALA	2.2
1	B	151	SER	2.2
1	B	59	MET	2.2
1	A	245	GLU	2.2
1	B	49	ALA	2.2
1	B	252	ALA	2.2
1	B	165	CYS	2.1
1	B	43	ASN	2.1
1	B	45	ASN	2.1
1	B	72	ASP	2.1
1	A	249	ASN	2.1
1	B	290	CYS	2.1
1	B	46	THR	2.1
1	B	47	PRO	2.0
1	B	178	GLU	2.0
1	A	221	CYS	2.0
1	B	208	ASP	2.0
1	A	46	THR	2.0

6.2 Non-standard residues in protein, DNA, RNA chains [i](#)

There are no non-standard protein/DNA/RNA residues in this entry.

6.3 Carbohydrates [i](#)

There are no monosaccharides in this entry.

6.4 Ligands [i](#)

In the following table, the Atoms column lists the number of modelled atoms in the group and the number defined in the chemical component dictionary. The B-factors column lists the minimum, median, 95th percentile and maximum values of B factors of atoms in the group. The column labelled 'Q< 0.9' lists the number of atoms with occupancy less than 0.9.

Mol	Type	Chain	Res	Atoms	RSCC	RSR	B-factors(Å ²)	Q<0.9
2	H7N	A	401	13/14	0.80	0.35	29,31,35,36	0
2	H7N	B	401	13/14	0.88	0.32	29,31,35,35	0

6.5 Other polymers [i](#)

There are no such residues in this entry.