



Full wwPDB X-ray Structure Validation Report ⓘ

Sep 3, 2023 – 05:10 PM EDT

PDB ID : 3T02
Title : Crystal Structure of Phosphonoacetate hydrolase from Sinorhizobium meliloti
1021 in complex with Phosphonoacetate
Authors : Agarwal, V.; Nair, S.K.
Deposited on : 2011-07-19
Resolution : 2.00 Å(reported)

This is a Full wwPDB X-ray Structure Validation Report for a publicly released PDB entry.

We welcome your comments at validation@mail.wwpdb.org

A user guide is available at

<https://www.wwpdb.org/validation/2017/XrayValidationReportHelp>

with specific help available everywhere you see the ⓘ symbol.

The types of validation reports are described at

<http://www.wwpdb.org/validation/2017/FAQs#types>.

The following versions of software and data (see [references ⓘ](#)) were used in the production of this report:

MolProbity : 4.02b-467
Mogul : 1.8.5 (274361), CSD as541be (2020)
Xtriage (Phenix) : 1.13
EDS : 2.35
Percentile statistics : 20191225.v01 (using entries in the PDB archive December 25th 2019)
Refmac : 5.8.0158
CCP4 : 7.0.044 (Gargrove)
Ideal geometry (proteins) : Engh & Huber (2001)
Ideal geometry (DNA, RNA) : Parkinson et al. (1996)
Validation Pipeline (wwPDB-VP) : 2.35

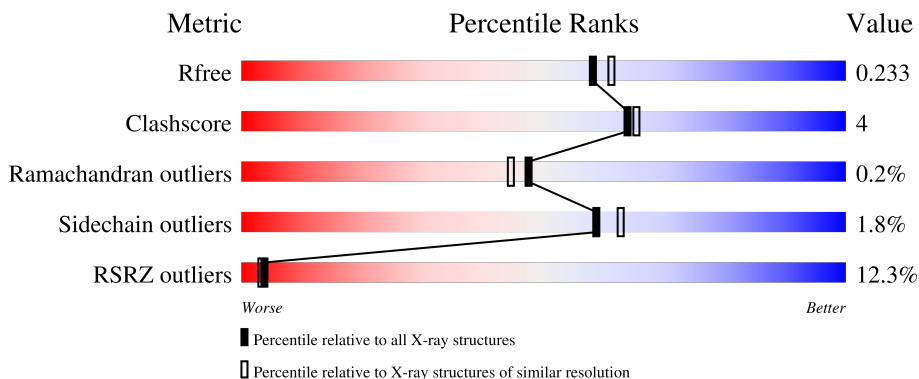
1 Overall quality at a glance

The following experimental techniques were used to determine the structure:

X-RAY DIFFRACTION

The reported resolution of this entry is 2.00 Å.

Percentile scores (ranging between 0-100) for global validation metrics of the entry are shown in the following graphic. The table shows the number of entries on which the scores are based.



Metric	Whole archive (#Entries)	Similar resolution (#Entries, resolution range(Å))
R_{free}	130704	8085 (2.00-2.00)
Clashscore	141614	9178 (2.00-2.00)
Ramachandran outliers	138981	9054 (2.00-2.00)
Sidechain outliers	138945	9053 (2.00-2.00)
RSRZ outliers	127900	7900 (2.00-2.00)

The table below summarises the geometric issues observed across the polymeric chains and their fit to the electron density. The red, orange, yellow and green segments of the lower bar indicate the fraction of residues that contain outliers for ≥ 3 , 2, 1 and 0 types of geometric quality criteria respectively. A grey segment represents the fraction of residues that are not modelled. The numeric value for each fraction is indicated below the corresponding segment, with a dot representing fractions $\leq 5\%$. The upper red bar (where present) indicates the fraction of residues that have poor fit to the electron density. The numeric value is given above the bar.

Mol	Chain	Length	Quality of chain
1	A	427	

2 Entry composition

There are 4 unique types of molecules in this entry. The entry contains 3482 atoms, of which 0 are hydrogens and 0 are deuteriums.

In the tables below, the ZeroOcc column contains the number of atoms modelled with zero occupancy, the AltConf column contains the number of residues with at least one atom in alternate conformation and the Trace column contains the number of residues modelled with at most 2 atoms.

- Molecule 1 is a protein called phosphonoacetate hydrolase.

Mol	Chain	Residues	Atoms					ZeroOcc	AltConf	Trace
			Total	C	N	O	S			
1	A	413	3192	2029	557	592	14	0	2	0

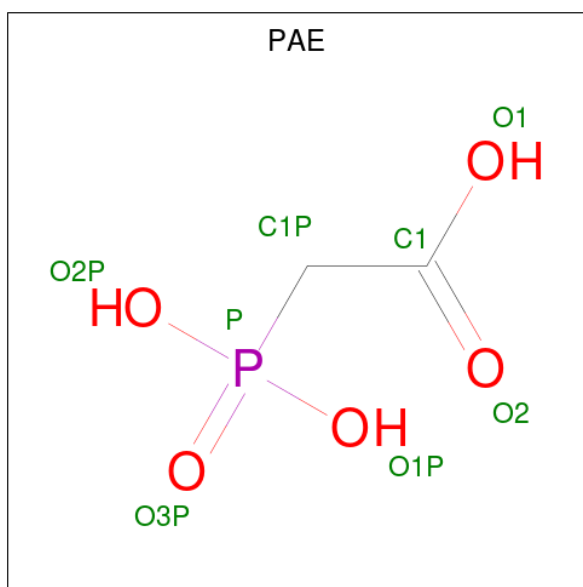
There are 4 discrepancies between the modelled and reference sequences:

Chain	Residue	Modelled	Actual	Comment	Reference
A	-2	GLY	-	expression tag	UNP Q92UV8
A	-1	SER	-	expression tag	UNP Q92UV8
A	0	HIS	-	expression tag	UNP Q92UV8
A	68	ALA	THR	engineered mutation	UNP Q92UV8

- Molecule 2 is ZINC ION (three-letter code: ZN) (formula: Zn).

Mol	Chain	Residues	Atoms		ZeroOcc	AltConf
2	A	2	Total	Zn	0	0
			2	2		

- Molecule 3 is PHOSPHONOACETIC ACID (three-letter code: PAE) (formula: C₂H₅O₅P).



Mol	Chain	Residues	Atoms				ZeroOcc	AltConf
			Total	C	O	P		
3	A	1	8	2	5	1	0	0

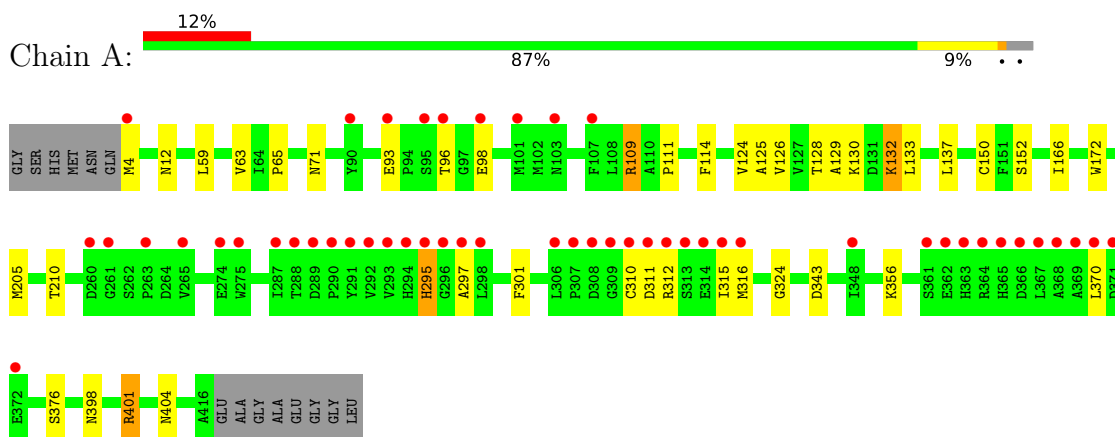
- Molecule 4 is water.

Mol	Chain	Residues	Atoms		ZeroOcc	AltConf
			Total	O		
4	A	280	280	280	0	0

3 Residue-property plots [i](#)

These plots are drawn for all protein, RNA, DNA and oligosaccharide chains in the entry. The first graphic for a chain summarises the proportions of the various outlier classes displayed in the second graphic. The second graphic shows the sequence view annotated by issues in geometry and electron density. Residues are color-coded according to the number of geometric quality criteria for which they contain at least one outlier: green = 0, yellow = 1, orange = 2 and red = 3 or more. A red dot above a residue indicates a poor fit to the electron density ($RSRZ > 2$). Stretches of 2 or more consecutive residues without any outlier are shown as a green connector. Residues present in the sample, but not in the model, are shown in grey.

- Molecule 1: phosphonoacetate hydrolase



4 Data and refinement statistics

Property	Value	Source
Space group	P 43 21 2	Depositor
Cell constants a, b, c, α , β , γ	111.35Å 111.35Å 72.77Å 90.00° 90.00° 90.00°	Depositor
Resolution (Å)	25.00 – 2.00 39.37 – 2.00	Depositor EDS
% Data completeness (in resolution range)	99.4 (25.00-2.00) 99.4 (39.37-2.00)	Depositor EDS
R_{merge}	0.07	Depositor
R_{sym}	(Not available)	Depositor
$\langle I/\sigma(I) \rangle$ ¹	2.29 (at 2.00Å)	Xtrriage
Refinement program	REFMAC 5.5.0109	Depositor
R, R_{free}	0.189 , 0.234 0.189 , 0.233	Depositor DCC
R_{free} test set	1579 reflections (5.04%)	wwPDB-VP
Wilson B-factor (Å ²)	26.3	Xtrriage
Anisotropy	0.157	Xtrriage
Bulk solvent k_{sol} (e/Å ³), B_{sol} (Å ²)	0.36 , 46.3	EDS
L-test for twinning ²	$\langle L \rangle = 0.48$, $\langle L^2 \rangle = 0.32$	Xtrriage
Estimated twinning fraction	No twinning to report.	Xtrriage
F_o, F_c correlation	0.95	EDS
Total number of atoms	3482	wwPDB-VP
Average B, all atoms (Å ²)	32.0	wwPDB-VP

Xtrriage's analysis on translational NCS is as follows: *The largest off-origin peak in the Patterson function is 6.49% of the height of the origin peak. No significant pseudotranslation is detected.*

¹Intensities estimated from amplitudes.

²Theoretical values of $\langle |L| \rangle$, $\langle L^2 \rangle$ for acentric reflections are 0.5, 0.333 respectively for untwinned datasets, and 0.375, 0.2 for perfectly twinned datasets.

5 Model quality [i](#)

5.1 Standard geometry [i](#)

Bond lengths and bond angles in the following residue types are not validated in this section: ZN, PAE

The Z score for a bond length (or angle) is the number of standard deviations the observed value is removed from the expected value. A bond length (or angle) with $|Z| > 5$ is considered an outlier worth inspection. RMSZ is the root-mean-square of all Z scores of the bond lengths (or angles).

Mol	Chain	Bond lengths		Bond angles	
		RMSZ	# $ Z > 5$	RMSZ	# $ Z > 5$
1	A	0.49	0/3271	0.58	1/4448 (0.0%)

There are no bond length outliers.

All (1) bond angle outliers are listed below:

Mol	Chain	Res	Type	Atoms	Z	Observed($^{\circ}$)	Ideal($^{\circ}$)
1	A	109	ARG	NE-CZ-NH2	-5.11	117.75	120.30

There are no chirality outliers.

There are no planarity outliers.

5.2 Too-close contacts [i](#)

In the following table, the Non-H and H(model) columns list the number of non-hydrogen atoms and hydrogen atoms in the chain respectively. The H(added) column lists the number of hydrogen atoms added and optimized by MolProbity. The Clashes column lists the number of clashes within the asymmetric unit, whereas Symm-Clashes lists symmetry-related clashes.

Mol	Chain	Non-H	H(model)	H(added)	Clashes	Symm-Clashes
1	A	3192	0	3165	27	0
2	A	2	0	0	0	0
3	A	8	0	1	0	0
4	A	280	0	0	4	0
All	All	3482	0	3166	27	0

The all-atom clashscore is defined as the number of clashes found per 1000 atoms (including hydrogen atoms). The all-atom clashscore for this structure is 4.

All (27) close contacts within the same asymmetric unit are listed below, sorted by their clash

magnitude.

Atom-1	Atom-2	Interatomic distance (Å)	Clash overlap (Å)
1:A:63:VAL:H	1:A:71:ASN:HD21	1.12	0.91
1:A:132:LYS:O	4:A:666:HOH:O	2.03	0.77
1:A:71:ASN:HD22	1:A:404:ASN:HD21	1.39	0.71
1:A:63:VAL:H	1:A:71:ASN:ND2	1.87	0.70
1:A:63:VAL:N	1:A:71:ASN:HD21	1.92	0.64
1:A:401:ARG:HB2	4:A:595:HOH:O	2.01	0.61
1:A:12:ASN:HD21	1:A:111:PRO:HD2	1.70	0.56
1:A:71:ASN:ND2	1:A:404:ASN:HD21	2.06	0.54
1:A:324:GLY:HA3	1:A:356:LYS:HD2	1.93	0.51
1:A:295:HIS:C	1:A:297:ALA:H	2.14	0.51
1:A:133:LEU:HG	1:A:137:LEU:CD1	2.41	0.50
1:A:166:ILE:HD11	1:A:172:TRP:CD2	2.46	0.49
1:A:109:ARG:NH2	1:A:343:ASP:OD2	2.35	0.49
1:A:311:ASP:O	1:A:315:ILE:HG12	2.12	0.49
1:A:128:THR:O	1:A:152:SER:HA	2.13	0.48
1:A:114:PHE:HB3	1:A:124:VAL:HG11	1.95	0.47
1:A:59:LEU:H	1:A:398:ASN:HD21	1.63	0.46
1:A:65:PRO:HB3	1:A:301:PHE:CG	2.52	0.44
1:A:93:GLU:HB2	1:A:98:GLU:HB3	2.01	0.42
1:A:129:ALA:HB3	1:A:210:THR:HG23	2.00	0.42
1:A:295:HIS:CE1	1:A:370:LEU:H	2.37	0.42
1:A:125:ALA:O	1:A:205:MET:HA	2.20	0.41
1:A:4:MET:N	4:A:637:HOH:O	2.53	0.41
1:A:312:ARG:O	1:A:316:MET:HG3	2.20	0.41
1:A:126:VAL:O	1:A:150:CYS:HA	2.19	0.41
1:A:132:LYS:H	1:A:132:LYS:HG3	1.70	0.41
1:A:297:ALA:HB3	4:A:627:HOH:O	2.19	0.41

There are no symmetry-related clashes.

5.3 Torsion angles [i](#)

5.3.1 Protein backbone [i](#)

In the following table, the Percentiles column shows the percent Ramachandran outliers of the chain as a percentile score with respect to all X-ray entries followed by that with respect to entries of similar resolution.

The Analysed column shows the number of residues for which the backbone conformation was analysed, and the total number of residues.

Mol	Chain	Analysed	Favoured	Allowed	Outliers	Percentiles
1	A	413/427 (97%)	392 (95%)	20 (5%)	1 (0%)	47 44

All (1) Ramachandran outliers are listed below:

Mol	Chain	Res	Type
1	A	96	THR

5.3.2 Protein sidechains [i](#)

In the following table, the Percentiles column shows the percent sidechain outliers of the chain as a percentile score with respect to all X-ray entries followed by that with respect to entries of similar resolution.

The Analysed column shows the number of residues for which the sidechain conformation was analysed, and the total number of residues.

Mol	Chain	Analysed	Rotameric	Outliers	Percentiles
1	A	334/340 (98%)	328 (98%)	6 (2%)	59 63

All (6) residues with a non-rotameric sidechain are listed below:

Mol	Chain	Res	Type
1	A	130	LYS
1	A	132	LYS
1	A	295	HIS
1	A	310	CYS
1	A	376	SER
1	A	401	ARG

Sometimes sidechains can be flipped to improve hydrogen bonding and reduce clashes. All (7) such sidechains are listed below:

Mol	Chain	Res	Type
1	A	12	ASN
1	A	71	ASN
1	A	72	ASN
1	A	89	ASN
1	A	103	ASN
1	A	257	HIS
1	A	398	ASN

5.3.3 RNA [i](#)

There are no RNA molecules in this entry.

5.4 Non-standard residues in protein, DNA, RNA chains [i](#)

There are no non-standard protein/DNA/RNA residues in this entry.

5.5 Carbohydrates [i](#)

There are no monosaccharides in this entry.

5.6 Ligand geometry [i](#)

Of 3 ligands modelled in this entry, 2 are monoatomic - leaving 1 for Mogul analysis.

In the following table, the Counts columns list the number of bonds (or angles) for which Mogul statistics could be retrieved, the number of bonds (or angles) that are observed in the model and the number of bonds (or angles) that are defined in the Chemical Component Dictionary. The Link column lists molecule types, if any, to which the group is linked. The Z score for a bond length (or angle) is the number of standard deviations the observed value is removed from the expected value. A bond length (or angle) with $|Z| > 2$ is considered an outlier worth inspection. RMSZ is the root-mean-square of all Z scores of the bond lengths (or angles).

Mol	Type	Chain	Res	Link	Bond lengths			Bond angles		
					Counts	RMSZ	# Z > 2	Counts	RMSZ	# Z > 2
3	PAE	A	503	2	7,7,7	1.23	0	9,10,10	1.65	3 (33%)

In the following table, the Chirals column lists the number of chiral outliers, the number of chiral centers analysed, the number of these observed in the model and the number defined in the Chemical Component Dictionary. Similar counts are reported in the Torsion and Rings columns. '-' means no outliers of that kind were identified.

Mol	Type	Chain	Res	Link	Chirals	Torsions	Rings
3	PAE	A	503	2	-	1/5/5/5	-

There are no bond length outliers.

All (3) bond angle outliers are listed below:

Mol	Chain	Res	Type	Atoms	Z	Observed(°)	Ideal(°)
3	A	503	PAE	O3P-P-C1P	-2.90	104.32	110.94
3	A	503	PAE	O2P-P-O1P	2.37	115.02	108.08

Continued on next page...

Continued from previous page...

Mol	Chain	Res	Type	Atoms	Z	Observed(°)	Ideal(°)
3	A	503	PAE	O2-C1-C1P	-2.14	117.56	122.53

There are no chirality outliers.

All (1) torsion outliers are listed below:

Mol	Chain	Res	Type	Atoms
3	A	503	PAE	C1-C1P-P-O1P

There are no ring outliers.

No monomer is involved in short contacts.

5.7 Other polymers [i](#)

There are no such residues in this entry.

5.8 Polymer linkage issues [i](#)

There are no chain breaks in this entry.

6 Fit of model and data

6.1 Protein, DNA and RNA chains

In the following table, the column labelled ‘#RSRZ> 2’ contains the number (and percentage) of RSRZ outliers, followed by percent RSRZ outliers for the chain as percentile scores relative to all X-ray entries and entries of similar resolution. The OWAB column contains the minimum, median, 95th percentile and maximum values of the occupancy-weighted average B-factor per residue. The column labelled ‘Q< 0.9’ lists the number of (and percentage) of residues with an average occupancy less than 0.9.

Mol	Chain	Analysed	<RSRZ>	#RSRZ>2	OWAB(Å ²)	Q<0.9
1	A	413/427 (96%)	0.60	51 (12%) 4 3	14, 24, 68, 78	0

All (51) RSRZ outliers are listed below:

Mol	Chain	Res	Type	RSRZ
1	A	369	ALA	18.4
1	A	292	VAL	14.2
1	A	367	LEU	12.0
1	A	363	HIS	11.7
1	A	364	ARG	9.6
1	A	295	HIS	9.6
1	A	290	PRO	9.4
1	A	294	HIS	9.3
1	A	291	TYR	9.3
1	A	370	LEU	9.2
1	A	296	GLY	8.9
1	A	371	ASP	8.4
1	A	368	ALA	8.1
1	A	289	ASP	7.7
1	A	309	GLY	7.3
1	A	365	HIS	7.2
1	A	293	VAL	7.1
1	A	366	ASP	6.7
1	A	90	TYR	6.0
1	A	310	CYS	5.9
1	A	96	THR	4.6
1	A	288	THR	4.4
1	A	308	ASP	3.9
1	A	311	ASP	3.9
1	A	4	MET	3.5
1	A	103	ASN	3.3
1	A	312	ARG	3.2

Continued on next page...

Continued from previous page...

Mol	Chain	Res	Type	RSRZ
1	A	297	ALA	3.2
1	A	306	LEU	3.2
1	A	260	ASP	3.0
1	A	101	MET	2.9
1	A	307	PRO	2.9
1	A	265	VAL	2.9
1	A	313	SER	2.8
1	A	362	GLU	2.7
1	A	275	TRP	2.6
1	A	95	SER	2.6
1	A	315	ILE	2.5
1	A	107	PHE	2.5
1	A	298	LEU	2.4
1	A	372	GLU	2.4
1	A	93	GLU	2.3
1	A	348	ILE	2.3
1	A	361	SER	2.3
1	A	287	ILE	2.3
1	A	261	GLY	2.2
1	A	274	GLU	2.2
1	A	314	GLU	2.2
1	A	316	MET	2.1
1	A	98	GLU	2.1
1	A	263	PRO	2.0

6.2 Non-standard residues in protein, DNA, RNA chains [i](#)

There are no non-standard protein/DNA/RNA residues in this entry.

6.3 Carbohydrates [i](#)

There are no monosaccharides in this entry.

6.4 Ligands [i](#)

In the following table, the Atoms column lists the number of modelled atoms in the group and the number defined in the chemical component dictionary. The B-factors column lists the minimum, median, 95th percentile and maximum values of B factors of atoms in the group. The column labelled 'Q< 0.9' lists the number of atoms with occupancy less than 0.9.

Mol	Type	Chain	Res	Atoms	RSCC	RSR	B-factors(\AA^2)	Q<0.9
3	PAE	A	503	8/8	0.96	0.12	31,34,41,43	0
2	ZN	A	502	1/1	0.99	0.08	27,27,27,27	0
2	ZN	A	501	1/1	1.00	0.08	23,23,23,23	0

6.5 Other polymers [i](#)

There are no such residues in this entry.