



# Full wwPDB X-ray Structure Validation Report ⓘ

Oct 26, 2024 – 09:42 AM EDT

PDB ID : 5T0A  
Title : Crystal Structure of Heparan Sulfate 6-O-Sulfotransferase with bound PAP and heptasaccharide substrate  
Authors : Pedersen, L.C.; Moon, A.F.; Krahn, J.M.; Liu, J.  
Deposited on : 2016-08-15  
Resolution : 1.95 Å(reported)

This is a Full wwPDB X-ray Structure Validation Report for a publicly released PDB entry.

We welcome your comments at [validation@mail.wwpdb.org](mailto:validation@mail.wwpdb.org)

A user guide is available at

<https://www.wwpdb.org/validation/2017/XrayValidationReportHelp>

with specific help available everywhere you see the ⓘ symbol.

The types of validation reports are described at

<http://www.wwpdb.org/validation/2017/FAQs#types>.

---

The following versions of software and data (see [references ⓘ](#)) were used in the production of this report:

MolProbity : 4.02b-467  
Mogul : 2022.3.0, CSD as543be (2022)  
Xtrriage (Phenix) : 1.20.1  
EDS : 3.0  
buster-report : 1.1.7 (2018)  
Percentile statistics : 20231227.v01 (using entries in the PDB archive December 27th 2023)  
CCP4 : 9.0.003 (Gargrove)  
Density-Fitness : 1.0.11  
Ideal geometry (proteins) : Engh & Huber (2001)  
Ideal geometry (DNA, RNA) : Parkinson et al. (1996)  
Validation Pipeline (wwPDB-VP) : 2.39

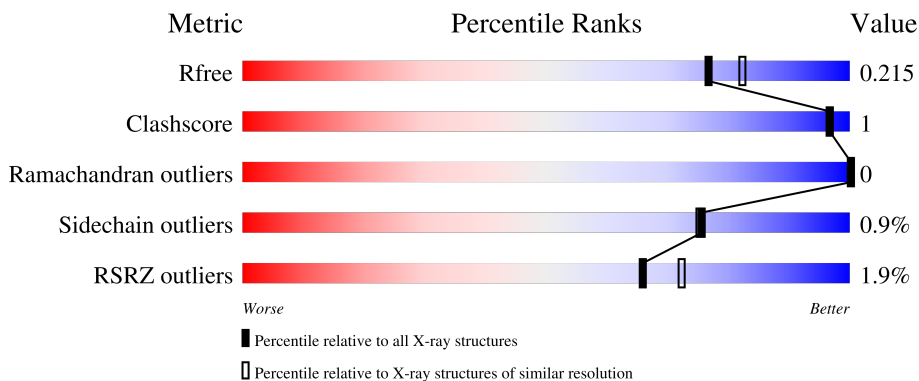
# 1 Overall quality at a glance

The following experimental techniques were used to determine the structure:

*X-RAY DIFFRACTION*

The reported resolution of this entry is 1.95 Å.

Percentile scores (ranging between 0-100) for global validation metrics of the entry are shown in the following graphic. The table shows the number of entries on which the scores are based.



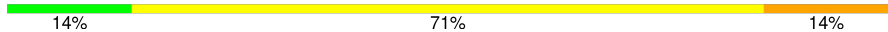
Metric	Whole archive (#Entries)	Similar resolution (#Entries, resolution range(Å))
$R_{free}$	164625	3187 (1.96-1.96)
Clashscore	180529	3412 (1.96-1.96)
Ramachandran outliers	177936	3390 (1.96-1.96)
Sidechain outliers	177891	3390 (1.96-1.96)
RSRZ outliers	164620	3186 (1.96-1.96)

The table below summarises the geometric issues observed across the polymeric chains and their fit to the electron density. The red, orange, yellow and green segments of the lower bar indicate the fraction of residues that contain outliers for  $\geq 3$ , 2, 1 and 0 types of geometric quality criteria respectively. A grey segment represents the fraction of residues that are not modelled. The numeric value for each fraction is indicated below the corresponding segment, with a dot representing fractions  $\leq 5\%$ . The upper red bar (where present) indicates the fraction of residues that have poor fit to the electron density. The numeric value is given above the bar.

Mol	Chain	Length	Quality of chain
1	A	692	 95%
1	B	692	 95%
2	C	6	 33% 50% 17%
3	D	4	 50% 50%
3	F	4	 50% 50%

*Continued on next page...*

*Continued from previous page...*

Mol	Chain	Length	Quality of chain
4	E	7	 14% 71% 14%

## 2 Entry composition

There are 11 unique types of molecules in this entry. The entry contains 12008 atoms, of which 0 are hydrogens and 0 are deuteriums.

In the tables below, the ZeroOcc column contains the number of atoms modelled with zero occupancy, the AltConf column contains the number of residues with at least one atom in alternate conformation and the Trace column contains the number of residues modelled with at most 2 atoms.

- Molecule 1 is a protein called maltose binding protein - heparan sulfate 6-O-sulfotransferase isoform 3 fusion protein.

Mol	Chain	Residues	Atoms					ZeroOcc	AltConf	Trace
			Total	C	N	O	S			
1	A	670	5234	3337	890	981	26	0	3	0
1	B	677	5296	3376	896	997	27	0	7	0

There are 26 discrepancies between the modelled and reference sequences:

Chain	Residue	Modelled	Actual	Comment	Reference
A	0	MET	-	initiating methionine	UNP P0AEY0
A	82	ALA	ASP	engineered mutation	UNP P0AEY0
A	83	ALA	LYS	engineered mutation	UNP P0AEY0
A	172	ALA	GLU	engineered mutation	UNP P0AEY0
A	173	ALA	ASN	engineered mutation	UNP P0AEY0
A	239	ALA	LYS	engineered mutation	UNP P0AEY0
A	359	ALA	GLU	engineered mutation	UNP P0AEY0
A	362	ALA	LYS	engineered mutation	UNP P0AEY0
A	363	ALA	ASP	engineered mutation	UNP P0AEY0
A	367	ASN	-	linker	UNP P0AEY0
A	368	ALA	-	linker	UNP P0AEY0
A	369	ALA	-	linker	UNP P0AEY0
A	370	ALA	-	linker	UNP P0AEY0
B	0	MET	-	initiating methionine	UNP P0AEY0
B	82	ALA	ASP	engineered mutation	UNP P0AEY0
B	83	ALA	LYS	engineered mutation	UNP P0AEY0
B	172	ALA	GLU	engineered mutation	UNP P0AEY0
B	173	ALA	ASN	engineered mutation	UNP P0AEY0
B	239	ALA	LYS	engineered mutation	UNP P0AEY0
B	359	ALA	GLU	engineered mutation	UNP P0AEY0
B	362	ALA	LYS	engineered mutation	UNP P0AEY0
B	363	ALA	ASP	engineered mutation	UNP P0AEY0
B	367	ASN	-	linker	UNP P0AEY0
B	368	ALA	-	linker	UNP P0AEY0

*Continued on next page...*

Continued from previous page...

Chain	Residue	Modelled	Actual	Comment	Reference
B	369	ALA	-	linker	UNP P0AEY0
B	370	ALA	-	linker	UNP P0AEY0

- Molecule 2 is an oligosaccharide called 2-deoxy-2-(sulfoamino)-alpha-D-glucopyranose-(1-4)-beta-D-glucopyranuronic acid-(1-4)-2-deoxy-2-(sulfoamino)-alpha-D-glucopyranose-(1-4)-2-O-sulfo-alpha-L-idopyranuronic acid-(1-4)-2-deoxy-2-(sulfoamino)-alpha-D-glucopyranose-(1-4)-beta-D-glucopyranuronic acid.



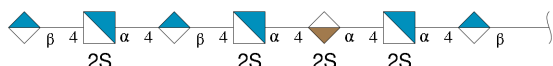
Mol	Chain	Residues	Atoms					ZeroOcc	AltConf	Trace
			Total	C	N	O	S			
2	C	6	85	36	3	42	4	0	0	0

- Molecule 3 is an oligosaccharide called alpha-D-glucopyranose-(1-4)-alpha-D-glucopyranose-(1-4)-alpha-D-glucopyranose-(1-4)-alpha-D-glucopyranose.



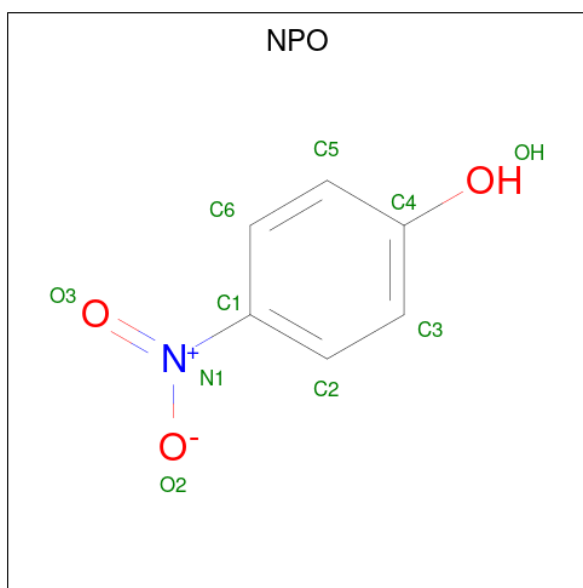
Mol	Chain	Residues	Atoms			ZeroOcc	AltConf	Trace
			Total	C	O			
3	D	4	45	24	21	0	0	0
3	F	4	45	24	21	0	0	0

- Molecule 4 is an oligosaccharide called beta-D-glucopyranuronic acid-(1-4)-2-deoxy-2-(sulfoamino)-alpha-D-glucopyranose-(1-4)-beta-D-glucopyranuronic acid-(1-4)-2-deoxy-2-(sulfoamino)-alpha-D-glucopyranose-(1-4)-2-O-sulfo-alpha-L-idopyranuronic acid-(1-4)-2-deoxy-2-(sulfoamino)-alpha-D-glucopyranose-(1-4)-beta-D-glucopyranuronic acid.



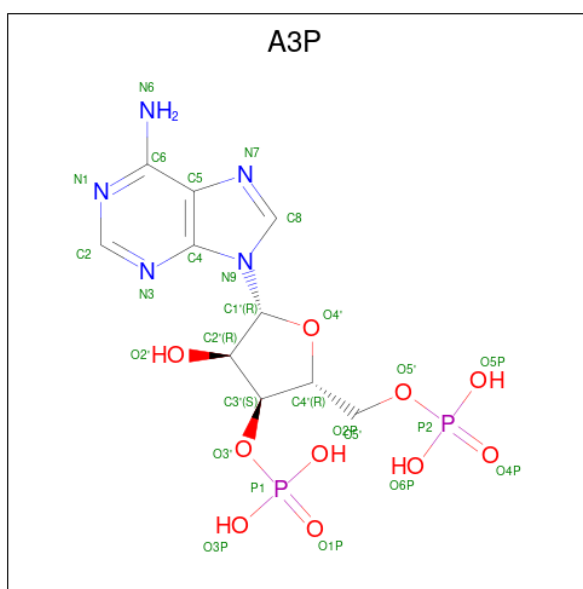
Mol	Chain	Residues	Atoms					ZeroOcc	AltConf	Trace
			Total	C	N	O	S			
4	E	7	112	48	4	55	5	0	4	0

- Molecule 5 is P-NITROPHENOL (three-letter code: NPO) (formula:  $C_6H_5NO_3$ ).



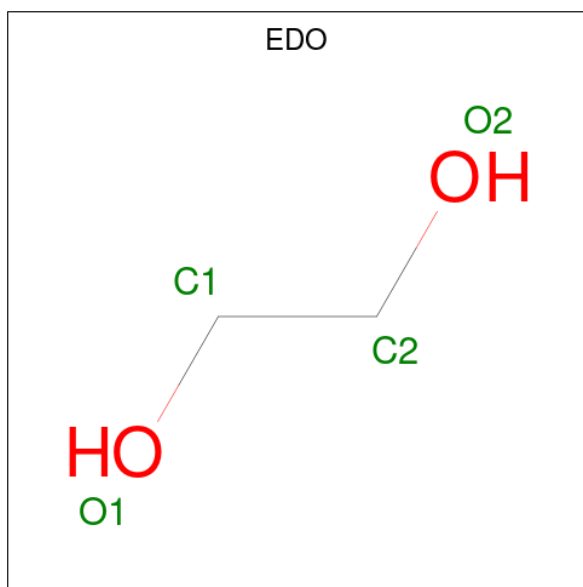
Mol	Chain	Residues	Atoms				ZeroOcc	AltConf
5	A	1	Total	C	N	O	0	0
			10	6	1	3		
5	B	1	Total	C	O	0	1	
			7	6	1			

- Molecule 6 is ADENOSINE-3'-5'-DIPHOSPHATE (three-letter code: A3P) (formula:  $C_{10}H_{15}N_5O_{10}P_2$ ).



Mol	Chain	Residues	Atoms					ZeroOcc	AltConf
			Total	C	N	O	P		
6	A	1	27	10	5	10	2	0	0
6	B	1	27	10	5	10	2	0	0

- Molecule 7 is 1,2-ETHANEDIOL (three-letter code: EDO) (formula: C<sub>2</sub>H<sub>6</sub>O<sub>2</sub>).



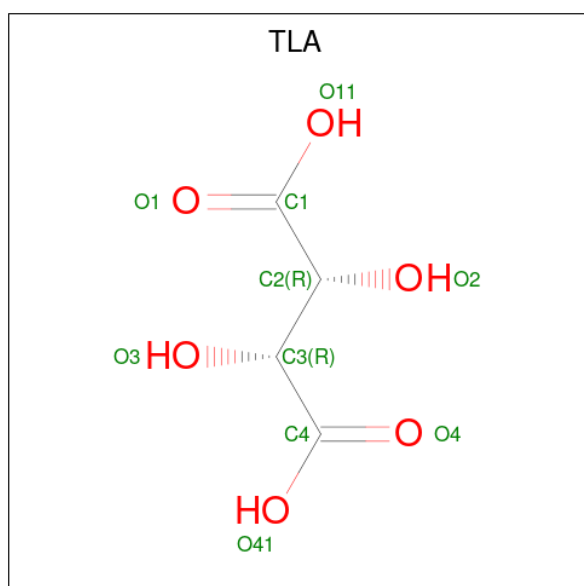
Mol	Chain	Residues	Atoms			ZeroOcc	AltConf
			Total	C	O		
7	A	1	4	2	2	0	0
7	A	1	4	2	2	0	0
7	A	1	4	2	2	0	0
7	A	1	4	2	2	0	0
7	A	1	4	2	2	0	0
7	A	1	4	2	2	0	0
7	A	1	8	4	4	0	1
7	A	1	4	2	2	0	0
7	A	1	4	2	2	0	0
7	A	1	4	2	2	0	0

*Continued on next page...*

Continued from previous page...

Mol	Chain	Residues	Atoms			ZeroOcc	AltConf
7	A	1	Total	C	O	0	0
			4	2	2		
7	B	1	Total	C	O	0	0
			4	2	2		
7	B	1	Total	C	O	0	0
			4	2	2		
7	B	1	Total	C	O	0	0
			4	2	2		

- Molecule 8 is L(+)-TARTARIC ACID (three-letter code: TLA) (formula: C<sub>4</sub>H<sub>6</sub>O<sub>6</sub>).



Mol	Chain	Residues	Atoms			ZeroOcc	AltConf
8	A	1	Total	C	O	0	0
			10	4	6		
8	A	1	Total	C	O	0	0
			10	4	6		
8	B	1	Total	C	O	0	0
			10	4	6		

- Molecule 9 is SODIUM ION (three-letter code: NA) (formula: Na).

Mol	Chain	Residues	Atoms		ZeroOcc	AltConf
9	A	4	Total	Na	0	0
			4	4		

Continued on next page...



*Continued from previous page...*

Mol	Chain	Residues	Atoms		ZeroOcc	AltConf
9	B	2	Total 2	Na 2	0	0

- Molecule 10 is CHLORIDE ION (three-letter code: CL) (formula: Cl).

Mol	Chain	Residues	Atoms		ZeroOcc	AltConf
10	A	2	Total 2	Cl 2	0	0
10	B	1	Total 1	Cl 1	0	0

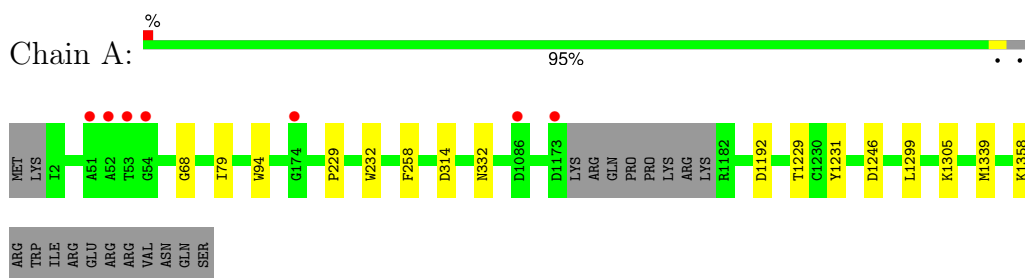
- Molecule 11 is water.

Mol	Chain	Residues	Atoms		ZeroOcc	AltConf
11	A	524	Total 527	O 527	0	3
11	B	487	Total 490	O 490	0	3

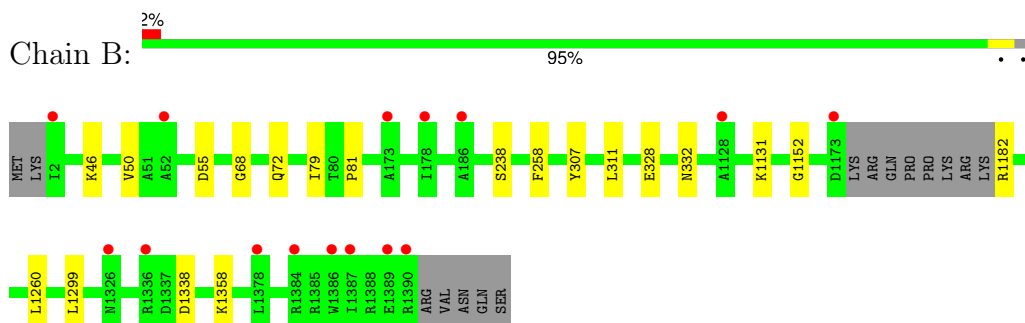
### 3 Residue-property plots [i](#)

These plots are drawn for all protein, RNA, DNA and oligosaccharide chains in the entry. The first graphic for a chain summarises the proportions of the various outlier classes displayed in the second graphic. The second graphic shows the sequence view annotated by issues in geometry and electron density. Residues are color-coded according to the number of geometric quality criteria for which they contain at least one outlier: green = 0, yellow = 1, orange = 2 and red = 3 or more. A red dot above a residue indicates a poor fit to the electron density ( $RSRZ > 2$ ). Stretches of 2 or more consecutive residues without any outlier are shown as a green connector. Residues present in the sample, but not in the model, are shown in grey.

- Molecule 1: maltose binding protein - heparan sulfate 6-O-sulfotransferase isoform 3 fusion protein



- Molecule 1: maltose binding protein - heparan sulfate 6-O-sulfotransferase isoform 3 fusion protein



- Molecule 2: 2-deoxy-2-(sulfoamino)-alpha-D-glucopyranose-(1-4)-beta-D-glucopyranuronic acid-(1-4)-2-deoxy-2-(sulfoamino)-alpha-D-glucopyranose-(1-4)-2-O-sulfo-alpha-L-idopyranuronic acid-(1-4)-2-deoxy-2-(sulfoamino)-alpha-D-glucopyranose-(1-4)-beta-D-glucopyranuronic acid



- Molecule 3: alpha-D-glucopyranose-(1-4)-alpha-D-glucopyranose-(1-4)-alpha-D-glucopyranose-(1-4)-alpha-D-glucopyranose

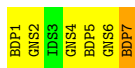




- Molecule 3: alpha-D-glucopyranose-(1-4)-alpha-D-glucopyranose-(1-4)-alpha-D-glucopyranose-(1-4)-alpha-D-glucopyranose



- Molecule 4: beta-D-glucopyranuronic acid-(1-4)-2-deoxy-2-(sulfoamino)-alpha-D-glucopyranose-(1-4)-beta-D-glucopyranuronic acid-(1-4)-2-deoxy-2-(sulfoamino)-alpha-D-glucopyranose-(1-4)-2-O-sulfo-alpha-L-idopyranuronic acid-(1-4)-2-deoxy-2-(sulfoamino)-alpha-D-glucopyranose-(1-4)-beta-D-glucopyranuronic acid



## 4 Data and refinement statistics

Property	Value	Source
Space group	P 21 21 21	Depositor
Cell constants a, b, c, $\alpha$ , $\beta$ , $\gamma$	75.78Å 128.29Å 178.93Å 90.00° 90.00° 90.00°	Depositor
Resolution (Å)	37.84 – 1.95 37.84 – 1.95	Depositor EDS
% Data completeness (in resolution range)	99.0 (37.84-1.95) 95.4 (37.84-1.95)	Depositor EDS
$R_{merge}$	(Not available)	Depositor
$R_{sym}$	(Not available)	Depositor
$\langle I/\sigma(I) \rangle$ <sup>1</sup>	2.50 (at 1.95Å)	Xtrriage
Refinement program	PHENIX 1.8.2_1309	Depositor
R, $R_{free}$	0.180 , 0.213 0.181 , 0.215	Depositor DCC
$R_{free}$ test set	2803 reflections (2.22%)	wwPDB-VP
Wilson B-factor (Å <sup>2</sup> )	32.6	Xtrriage
Anisotropy	0.163	Xtrriage
Bulk solvent $k_{sol}$ (e/Å <sup>3</sup> ), $B_{sol}$ (Å <sup>2</sup> )	0.34 , 43.2	EDS
L-test for twinning <sup>2</sup>	$\langle  L  \rangle = 0.50$ , $\langle L^2 \rangle = 0.33$	Xtrriage
Estimated twinning fraction	No twinning to report.	Xtrriage
$F_o, F_c$ correlation	0.96	EDS
Total number of atoms	12008	wwPDB-VP
Average B, all atoms (Å <sup>2</sup> )	34.0	wwPDB-VP

Xtrriage's analysis on translational NCS is as follows: *The largest off-origin peak in the Patterson function is 3.97% of the height of the origin peak. No significant pseudotranslation is detected.*

<sup>1</sup>Intensities estimated from amplitudes.

<sup>2</sup>Theoretical values of  $\langle |L| \rangle$ ,  $\langle L^2 \rangle$  for acentric reflections are 0.5, 0.333 respectively for untwinned datasets, and 0.375, 0.2 for perfectly twinned datasets.

## 5 Model quality

### 5.1 Standard geometry

Bond lengths and bond angles in the following residue types are not validated in this section: TLA, IDS, GLC, EDO, CL, A3P, GNS, BDP, NA, NPO

The Z score for a bond length (or angle) is the number of standard deviations the observed value is removed from the expected value. A bond length (or angle) with  $|Z| > 5$  is considered an outlier worth inspection. RMSZ is the root-mean-square of all Z scores of the bond lengths (or angles).

Mol	Chain	Bond lengths		Bond angles	
		RMSZ	# Z  >5	RMSZ	# Z  >5
1	A	0.40	0/5357	0.55	0/7275
1	B	0.41	0/5421	0.54	0/7367
All	All	0.40	0/10778	0.54	0/14642

There are no bond length outliers.

There are no bond angle outliers.

There are no chirality outliers.

There are no planarity outliers.

### 5.2 Too-close contacts

In the following table, the Non-H and H(model) columns list the number of non-hydrogen atoms and hydrogen atoms in the chain respectively. The H(added) column lists the number of hydrogen atoms added and optimized by MolProbity. The Clashes column lists the number of clashes within the asymmetric unit, whereas Symm-Clashes lists symmetry-related clashes.

Mol	Chain	Non-H	H(model)	H(added)	Clashes	Symm-Clashes
1	A	5234	0	5013	7	0
1	B	5296	0	5029	12	0
2	C	85	0	40	1	0
3	D	45	0	39	0	0
3	F	45	0	39	0	0
4	E	112	0	52	1	0
5	A	10	0	4	0	0
5	B	7	0	4	0	0
6	A	27	0	11	0	0
6	B	27	0	11	0	0
7	A	48	0	72	0	0

*Continued on next page...*

Continued from previous page...

Mol	Chain	Non-H	H(model)	H(added)	Clashes	Symm-Clashes
7	B	16	0	24	0	0
8	A	20	0	8	1	0
8	B	10	0	4	0	0
9	A	4	0	0	0	0
9	B	2	0	0	0	0
10	A	2	0	0	1	0
10	B	1	0	0	0	0
11	A	527	0	0	2	0
11	B	490	0	0	4	0
All	All	12008	0	10350	20	0

The all-atom clashscore is defined as the number of clashes found per 1000 atoms (including hydrogen atoms). The all-atom clashscore for this structure is 1.

All (20) close contacts within the same asymmetric unit are listed below, sorted by their clash magnitude.

Atom-1	Atom-2	Interatomic distance (Å)	Clash overlap (Å)
1:B:1131[A]:LYS:NZ	11:B:1505:HOH:O	2.32	0.60
1:B:72[B]:GLN:NE2	11:B:1509:HOH:O	2.35	0.60
10:A:2031:CL:CL	11:A:2534:HOH:O	2.54	0.58
1:B:307:TYR:CE2	1:B:311:LEU:HD11	2.44	0.51
1:B:68:GLY:HA3	1:B:332:ASN:O	2.11	0.51
1:B:46:LYS:O	1:B:50:VAL:HG22	2.10	0.51
1:A:1299:LEU:HD11	1:A:1358:LYS:HA	1.93	0.50
1:A:314:ASP:OD2	11:A:2101:HOH:O	2.19	0.47
1:B:79:ILE:HG22	1:B:81:PRO:HD3	1.96	0.47
1:B:1299:LEU:HD11	1:B:1358:LYS:HA	1.96	0.46
1:B:1182:ARG:NH2	11:B:1512:HOH:O	2.43	0.45
1:A:68:GLY:HA3	1:A:332:ASN:O	2.17	0.44
1:A:1305:LYS:NZ	1:B:238:SER:O	2.46	0.44
1:B:1152:GLY:O	11:B:1503:HOH:O	2.21	0.44
1:A:229:PRO:HA	1:A:232:TRP:CE2	2.54	0.43
1:B:1203:HIS:CE1	4:E:7:BDP:H5	2.54	0.42
8:A:2025:TLA:H3	2:C:6:GNS:O4	2.19	0.42
1:B:1190[A]:LEU:HD21	1:B:1260:LEU:HD11	2.01	0.41
1:A:79:ILE:HD11	1:A:94:TRP:HZ3	1.85	0.41
1:A:1229:THR:HG22	1:A:1231:TYR:H	1.85	0.41

There are no symmetry-related clashes.

## 5.3 Torsion angles [i](#)

### 5.3.1 Protein backbone [i](#)

In the following table, the Percentiles column shows the percent Ramachandran outliers of the chain as a percentile score with respect to all X-ray entries followed by that with respect to entries of similar resolution.

The Analysed column shows the number of residues for which the backbone conformation was analysed, and the total number of residues.

Mol	Chain	Analysed	Favoured	Allowed	Outliers	Percentiles	
1	A	669/692 (97%)	657 (98%)	12 (2%)	0	100	100
1	B	679/692 (98%)	667 (98%)	12 (2%)	0	100	100
All	All	1348/1384 (97%)	1324 (98%)	24 (2%)	0	100	100

There are no Ramachandran outliers to report.

### 5.3.2 Protein sidechains [i](#)

In the following table, the Percentiles column shows the percent sidechain outliers of the chain as a percentile score with respect to all X-ray entries followed by that with respect to entries of similar resolution.

The Analysed column shows the number of residues for which the sidechain conformation was analysed, and the total number of residues.

Mol	Chain	Analysed	Rotameric	Outliers	Percentiles	
1	A	531/582 (91%)	527 (99%)	4 (1%)	79	78
1	B	534/582 (92%)	529 (99%)	5 (1%)	75	75
All	All	1065/1164 (92%)	1056 (99%)	9 (1%)	75	78

All (9) residues with a non-rotameric sidechain are listed below:

Mol	Chain	Res	Type
1	A	258	PHE
1	A	1192	ASP
1	A	1246	ASP
1	A	1339	MET
1	B	55	ASP
1	B	258	PHE
1	B	328	GLU
1	B	1192	ASP

*Continued on next page...*

Continued from previous page...

Mol	Chain	Res	Type
1	B	1338	ASP

Sometimes sidechains can be flipped to improve hydrogen bonding and reduce clashes. All (1) such sidechains are listed below:

Mol	Chain	Res	Type
1	B	1275	ASN

### 5.3.3 RNA [i](#)

There are no RNA molecules in this entry.

## 5.4 Non-standard residues in protein, DNA, RNA chains [i](#)

There are no non-standard protein/DNA/RNA residues in this entry.

## 5.5 Carbohydrates [i](#)

22 monosaccharides are modelled in this entry.

In the following table, the Counts columns list the number of bonds (or angles) for which Mogul statistics could be retrieved, the number of bonds (or angles) that are observed in the model and the number of bonds (or angles) that are defined in the Chemical Component Dictionary. The Link column lists molecule types, if any, to which the group is linked. The Z score for a bond length (or angle) is the number of standard deviations the observed value is removed from the expected value. A bond length (or angle) with  $|Z| > 2$  is considered an outlier worth inspection. RMSZ is the root-mean-square of all Z scores of the bond lengths (or angles).

Mol	Type	Chain	Res	Link	Bond lengths			Bond angles		
					Counts	RMSZ	# Z  > 2	Counts	RMSZ	# Z  > 2
2	BDP	C	1	5,2	12,12,13	0.79	0	14,17,19	0.93	1 (7%)
2	GNS	C	2	2	15,15,16	0.77	0	17,22,24	1.10	1 (5%)
2	IDS	C	3	9,2	16,16,17	0.82	0	16,24,26	0.65	0
2	GNS	C	4	9,2	15,15,16	0.70	1 (6%)	17,22,24	1.02	2 (11%)
2	BDP	C	5	9,2	12,12,13	0.76	0	14,17,19	0.65	0
2	GNS	C	6	2	15,15,16	0.98	2 (13%)	17,22,24	1.70	2 (11%)
3	GLC	D	1	3	12,12,12	0.35	0	17,17,17	0.95	0
3	GLC	D	2	3	11,11,12	0.61	0	15,15,17	0.96	0
3	GLC	D	3	3	11,11,12	0.90	1 (9%)	15,15,17	1.08	1 (6%)
3	GLC	D	4	3	11,11,12	0.58	0	15,15,17	1.60	1 (6%)



Mol	Type	Chain	Res	Link	Bond lengths			Bond angles		
					Counts	RMSZ	# Z  > 2	Counts	RMSZ	# Z  > 2
4	BDP	E	1[A]	5,4	12,12,13	0.83	0	14,17,19	1.23	1 (7%)
4	GNS	E	2[A]	4	15,15,16	0.84	1 (6%)	17,22,24	1.66	3 (17%)
4	IDS	E	3[A]	4	16,16,17	0.89	0	16,24,26	0.79	0
4	GNS	E	4[A]	4	15,15,16	0.97	0	17,22,24	1.89	7 (41%)
4	GNS	E	4[B]	4	15,15,16	0.59	0	17,22,24	1.66	3 (17%)
4	BDP	E	5	4	12,12,13	0.88	0	14,17,19	1.13	2 (14%)
4	GNS	E	6	4	15,15,16	0.87	0	17,22,24	2.11	4 (23%)
4	BDP	E	7	4	12,12,13	0.86	0	14,17,19	1.45	3 (21%)
3	GLC	F	1	3	12,12,12	0.53	0	17,17,17	0.64	0
3	GLC	F	2	3	11,11,12	0.61	0	15,15,17	1.00	1 (6%)
3	GLC	F	3	3	11,11,12	0.63	0	15,15,17	0.83	0
3	GLC	F	4	3	11,11,12	0.67	0	15,15,17	1.40	3 (20%)

In the following table, the Chirals column lists the number of chiral outliers, the number of chiral centers analysed, the number of these observed in the model and the number defined in the Chemical Component Dictionary. Similar counts are reported in the Torsion and Rings columns. '2' means no outliers of that kind were identified.

Mol	Type	Chain	Res	Link	Chirals	Torsions	Rings
2	BDP	C	1	5,2	-	0/4/21/24	0/1/1/1
2	GNS	C	2	2	-	0/7/24/27	0/1/1/1
2	IDS	C	3	9,2	-	0/9/26/29	0/1/1/1
2	GNS	C	4	9,2	-	0/7/24/27	0/1/1/1
2	BDP	C	5	9,2	-	1/4/21/24	0/1/1/1
2	GNS	C	6	2	-	0/7/24/27	0/1/1/1
3	GLC	D	1	3	-	0/2/22/22	0/1/1/1
3	GLC	D	2	3	-	0/2/19/22	0/1/1/1
3	GLC	D	3	3	-	2/2/19/22	0/1/1/1
3	GLC	D	4	3	-	0/2/19/22	0/1/1/1
4	BDP	E	1[A]	5,4	-	0/4/21/24	0/1/1/1
4	GNS	E	2[A]	4	-	1/7/24/27	0/1/1/1
4	IDS	E	3[A]	4	-	0/9/26/29	0/1/1/1
4	GNS	E	4[A]	4	-	1/7/24/27	0/1/1/1
4	GNS	E	4[B]	4	-	3/7/24/27	0/1/1/1
4	BDP	E	5	4	-	0/4/21/24	0/1/1/1
4	GNS	E	6	4	-	1/7/24/27	0/1/1/1
4	BDP	E	7	4	-	0/4/21/24	0/1/1/1
3	GLC	F	1	3	-	0/2/22/22	0/1/1/1
3	GLC	F	2	3	-	0/2/19/22	0/1/1/1
3	GLC	F	3	3	-	0/2/19/22	0/1/1/1

Continued on next page...

Continued from previous page...

Mol	Type	Chain	Res	Link	Chirals	Torsions	Rings
3	GLC	F	4	3	-	2/2/19/22	0/1/1/1

All (5) bond length outliers are listed below:

Mol	Chain	Res	Type	Atoms	Z	Observed(Å)	Ideal(Å)
3	D	3	GLC	O5-C1	-2.24	1.39	1.43
2	C	6	GNS	O3S-S1	2.14	1.44	1.42
2	C	6	GNS	S1-N2	2.13	1.62	1.59
2	C	4	GNS	S1-N2	2.08	1.62	1.59
4	E	2[A]	GNS	O2S-S1	2.08	1.44	1.42

All (35) bond angle outliers are listed below:

Mol	Chain	Res	Type	Atoms	Z	Observed(°)	Ideal(°)
4	E	6	GNS	O2S-S1-O3S	-5.81	107.44	120.36
3	D	4	GLC	C1-O5-C5	5.31	119.30	112.19
4	E	4[B]	GNS	O2S-S1-O3S	-5.06	109.10	120.36
4	E	2[A]	GNS	O2S-S1-O3S	-4.26	110.88	120.36
2	C	6	GNS	O2S-S1-O3S	-4.24	110.92	120.36
4	E	6	GNS	C1-O5-C5	4.21	117.83	112.19
2	C	6	GNS	C1-O5-C5	3.75	117.22	112.19
2	C	2	GNS	O2S-S1-O3S	-3.37	112.87	120.36
4	E	4[A]	GNS	O5-C1-C2	-3.35	106.11	111.29
4	E	4[A]	GNS	O2S-S1-O3S	-3.31	113.00	120.36
4	E	1[A]	BDP	C1-C2-C3	3.31	114.46	109.64
4	E	4[A]	GNS	C3-C4-C5	-3.25	104.35	110.23
4	E	2[A]	GNS	C1-O5-C5	3.14	116.40	112.19
4	E	6	GNS	O2S-S1-N2	3.00	113.90	108.88
3	D	3	GLC	O5-C5-C6	-2.87	102.08	107.66
4	E	7	BDP	O2-C2-C1	2.86	115.78	109.22
3	F	4	GLC	C1-O5-C5	2.76	115.89	112.19
4	E	4[A]	GNS	C1-C2-N2	-2.66	106.02	110.22
4	E	6	GNS	O5-C1-C2	-2.65	107.19	111.29
4	E	2[A]	GNS	O5-C1-C2	-2.63	107.22	111.29
3	F	4	GLC	C2-C3-C4	-2.52	106.43	110.86
4	E	5	BDP	O5-C1-C2	-2.48	104.88	110.79
2	C	4	GNS	O2S-S1-O3S	-2.44	114.93	120.36
4	E	4[A]	GNS	C4-C3-C2	-2.43	107.45	111.02
3	F	2	GLC	C1-C2-C3	-2.41	106.13	109.64
4	E	7	BDP	O6B-C6-O6A	2.38	129.49	124.08
4	E	4[B]	GNS	O5-C1-C2	-2.33	107.68	111.29
2	C	1	BDP	C1-C2-C3	2.31	113.00	109.64

Continued on next page...

*Continued from previous page...*

Mol	Chain	Res	Type	Atoms	Z	Observed(°)	Ideal(°)
4	E	5	BDP	O2-C2-C3	-2.22	105.54	110.15
4	E	7	BDP	O5-C1-C2	-2.18	105.59	110.79
2	C	4	GNS	O5-C1-C2	-2.15	107.97	111.29
4	E	4[A]	GNS	O3-C3-C4	2.11	115.35	110.38
4	E	4[A]	GNS	O3-C3-C2	2.03	113.62	109.40
3	F	4	GLC	O2-C2-C3	-2.03	105.95	110.15
4	E	4[B]	GNS	C6-C5-C4	-2.03	108.04	113.02

There are no chirality outliers.

All (11) torsion outliers are listed below:

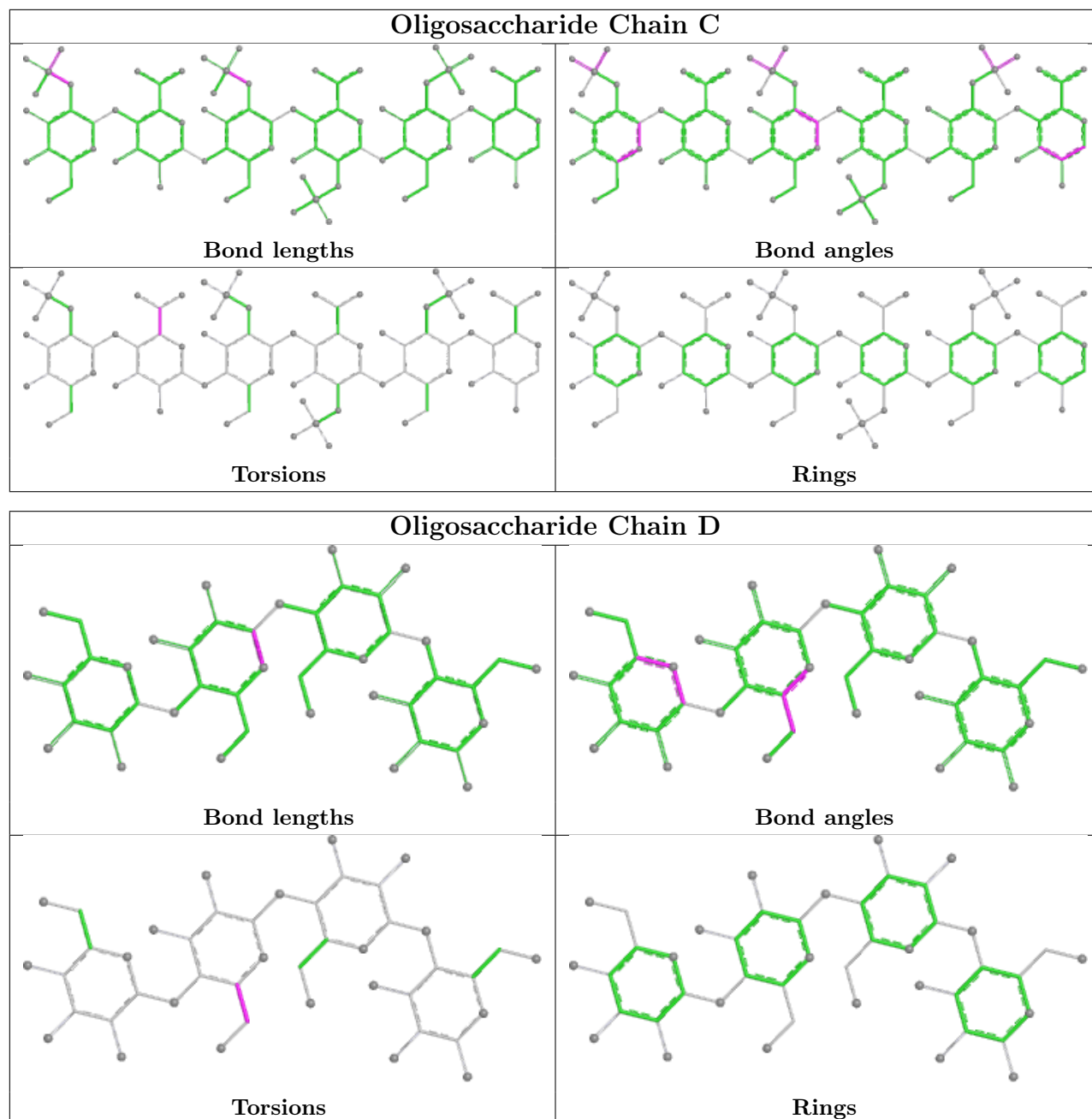
Mol	Chain	Res	Type	Atoms
4	E	4[A]	GNS	C2-N2-S1-O3S
4	E	4[B]	GNS	C2-N2-S1-O3S
3	F	4	GLC	O5-C5-C6-O6
3	F	4	GLC	C4-C5-C6-O6
3	D	3	GLC	C4-C5-C6-O6
3	D	3	GLC	O5-C5-C6-O6
4	E	2[A]	GNS	C2-N2-S1-O2S
4	E	4[B]	GNS	C4-C5-C6-O6
4	E	4[B]	GNS	O5-C5-C6-O6
2	C	5	BDP	O5-C5-C6-O6A
4	E	6	GNS	C2-N2-S1-O3S

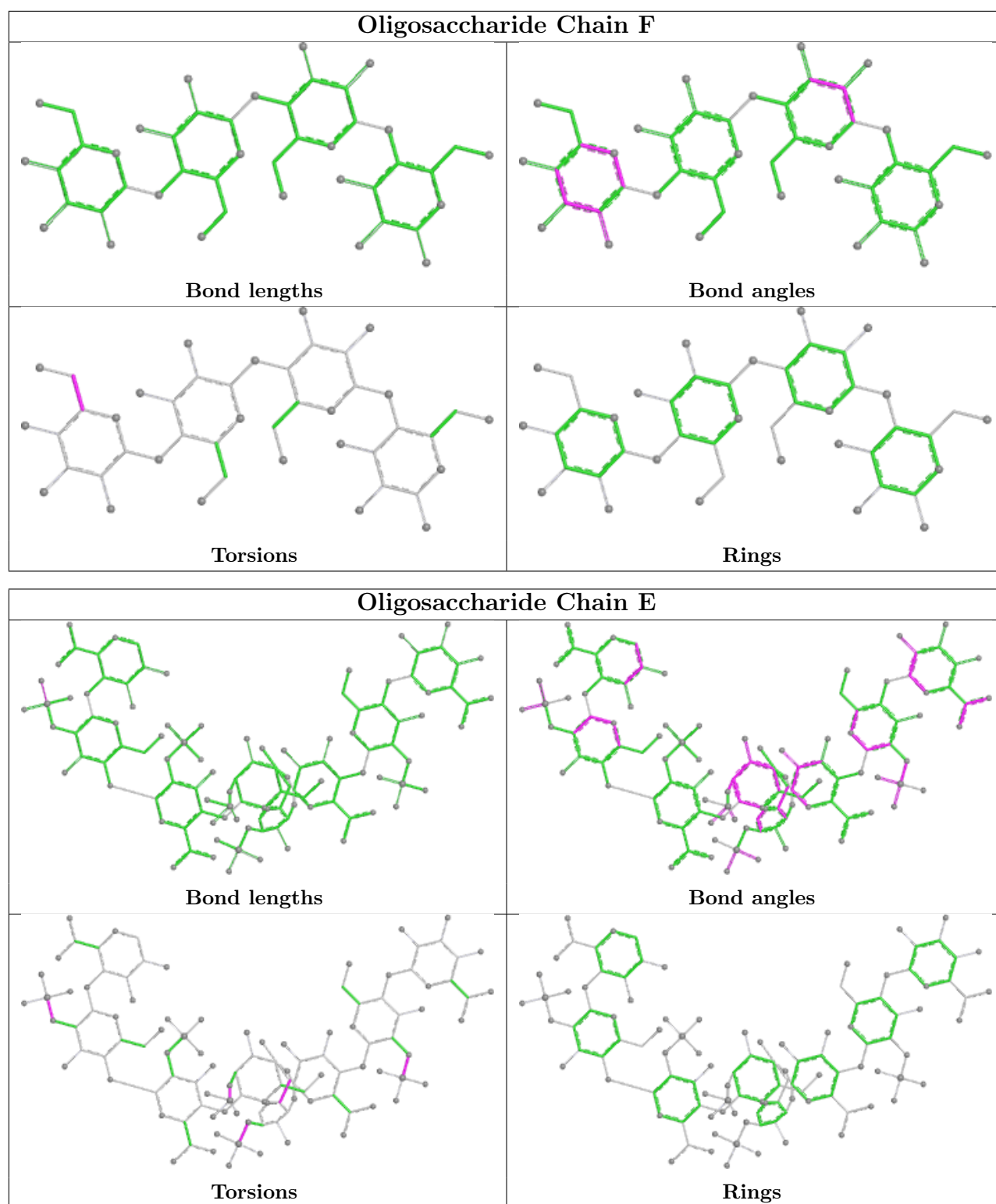
There are no ring outliers.

2 monomers are involved in 2 short contacts:

Mol	Chain	Res	Type	Clashes	Symm-Clashes
2	C	6	GNS	1	0
4	E	7	BDP	1	0

The following is a two-dimensional graphical depiction of Mogul quality analysis of bond lengths, bond angles, torsion angles, and ring geometry for oligosaccharide.





## 5.6 Ligand geometry [i](#)

Of 32 ligands modelled in this entry, 9 are monoatomic - leaving 23 for Mogul analysis.

In the following table, the Counts columns list the number of bonds (or angles) for which Mogul

statistics could be retrieved, the number of bonds (or angles) that are observed in the model and the number of bonds (or angles) that are defined in the Chemical Component Dictionary. The Link column lists molecule types, if any, to which the group is linked. The Z score for a bond length (or angle) is the number of standard deviations the observed value is removed from the expected value. A bond length (or angle) with  $|Z| > 2$  is considered an outlier worth inspection. RMSZ is the root-mean-square of all Z scores of the bond lengths (or angles).

Mol	Type	Chain	Res	Link	Bond lengths			Bond angles		
					Counts	RMSZ	# Z  > 2	Counts	RMSZ	# Z  > 2
5	NPO	B	1408[A]	4	7,7,10	1.06	1 (14%)	8,8,13	0.91	0
7	EDO	A	2021	-	3,3,3	0.28	0	2,2,2	0.70	0
8	TLA	A	2024	-	9,9,9	1.01	0	12,12,12	1.04	0
7	EDO	B	1414	-	3,3,3	0.58	0	2,2,2	0.32	0
7	EDO	A	2014	-	3,3,3	0.39	0	2,2,2	0.32	0
7	EDO	A	2020	-	3,3,3	0.39	0	2,2,2	0.25	0
7	EDO	A	2023	-	3,3,3	0.41	0	2,2,2	0.36	0
7	EDO	A	2019[A]	-	3,3,3	0.43	0	2,2,2	0.40	0
7	EDO	B	1417	-	3,3,3	0.46	0	2,2,2	0.47	0
7	EDO	B	1415	-	3,3,3	0.43	0	2,2,2	0.55	0
7	EDO	A	2016	-	3,3,3	0.30	0	2,2,2	0.68	0
7	EDO	A	2017	-	3,3,3	0.40	0	2,2,2	0.48	0
8	TLA	A	2025	9	9,9,9	0.99	0	12,12,12	1.18	0
7	EDO	A	2015	-	3,3,3	0.53	0	2,2,2	0.51	0
7	EDO	A	2013	-	3,3,3	0.41	0	2,2,2	0.37	0
7	EDO	A	2022	-	3,3,3	0.40	0	2,2,2	0.32	0
7	EDO	A	2018	-	3,3,3	0.42	0	2,2,2	0.37	0
6	A3P	B	1413	-	25,29,29	0.77	0	31,45,45	0.92	1 (3%)
6	A3P	A	2012	-	25,29,29	0.77	0	31,45,45	0.82	2 (6%)
5	NPO	A	2007	2	10,10,10	1.16	1 (10%)	11,13,13	0.73	0
7	EDO	B	1416	-	3,3,3	0.27	0	2,2,2	0.72	0
7	EDO	A	2019[B]	-	3,3,3	0.42	0	2,2,2	0.46	0
8	TLA	B	1418	-	9,9,9	0.99	0	12,12,12	1.17	0

In the following table, the Chirals column lists the number of chiral outliers, the number of chiral centers analysed, the number of these observed in the model and the number defined in the Chemical Component Dictionary. Similar counts are reported in the Torsion and Rings columns. '-' means no outliers of that kind were identified.

Mol	Type	Chain	Res	Link	Chirals	Torsions	Rings
5	NPO	B	1408[A]	4	-	-	0/1/1/1
7	EDO	A	2021	-	-	1/1/1/1	-
8	TLA	A	2024	-	-	0/12/12/12	-
7	EDO	B	1414	-	-	0/1/1/1	-
7	EDO	A	2014	-	-	0/1/1/1	-

Continued on next page...

Continued from previous page...

Mol	Type	Chain	Res	Link	Chirals	Torsions	Rings
7	EDO	A	2020	-	-	0/1/1/1	-
7	EDO	A	2023	-	-	0/1/1/1	-
7	EDO	A	2019[A]	-	-	0/1/1/1	-
7	EDO	B	1417	-	-	1/1/1/1	-
7	EDO	B	1415	-	-	0/1/1/1	-
7	EDO	A	2016	-	-	1/1/1/1	-
7	EDO	A	2017	-	-	0/1/1/1	-
8	TLA	A	2025	9	-	4/12/12/12	-
7	EDO	A	2015	-	-	0/1/1/1	-
7	EDO	A	2013	-	-	0/1/1/1	-
7	EDO	A	2022	-	-	1/1/1/1	-
7	EDO	A	2018	-	-	0/1/1/1	-
6	A3P	B	1413	-	-	0/11/31/31	0/3/3/3
6	A3P	A	2012	-	-	0/11/31/31	0/3/3/3
5	NPO	A	2007	2	-	0/2/4/4	0/1/1/1
7	EDO	B	1416	-	-	0/1/1/1	-
7	EDO	A	2019[B]	-	-	0/1/1/1	-
8	TLA	B	1418	-	-	0/12/12/12	-

All (2) bond length outliers are listed below:

Mol	Chain	Res	Type	Atoms	Z	Observed(Å)	Ideal(Å)
5	B	1408[A]	NPO	OH-C4	2.25	1.42	1.37
5	A	2007	NPO	OH-C4	2.04	1.41	1.37

All (3) bond angle outliers are listed below:

Mol	Chain	Res	Type	Atoms	Z	Observed(°)	Ideal(°)
6	B	1413	A3P	C5-C6-N6	2.19	123.65	120.31
6	A	2012	A3P	C5-C6-N6	2.05	123.44	120.31
6	A	2012	A3P	O6P-P2-O4P	2.02	118.72	110.83

There are no chirality outliers.

All (8) torsion outliers are listed below:

Mol	Chain	Res	Type	Atoms
7	A	2022	EDO	O1-C1-C2-O2
7	A	2021	EDO	O1-C1-C2-O2
8	A	2025	TLA	O11-C1-C2-C3
8	A	2025	TLA	O1-C1-C2-C3
8	A	2025	TLA	O11-C1-C2-O2

Continued on next page...

*Continued from previous page...*

Mol	Chain	Res	Type	Atoms
8	A	2025	TLA	O1-C1-C2-O2
7	A	2016	EDO	O1-C1-C2-O2
7	B	1417	EDO	O1-C1-C2-O2

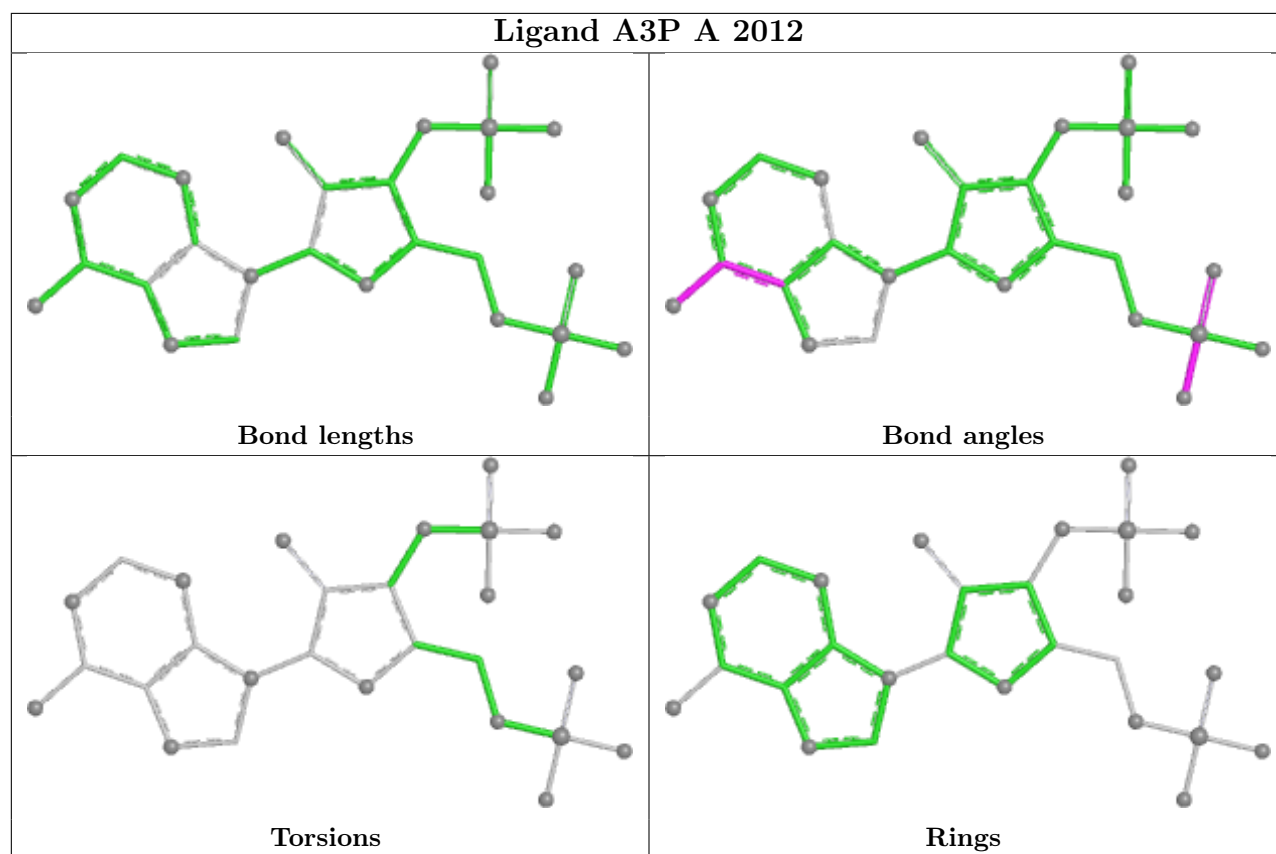
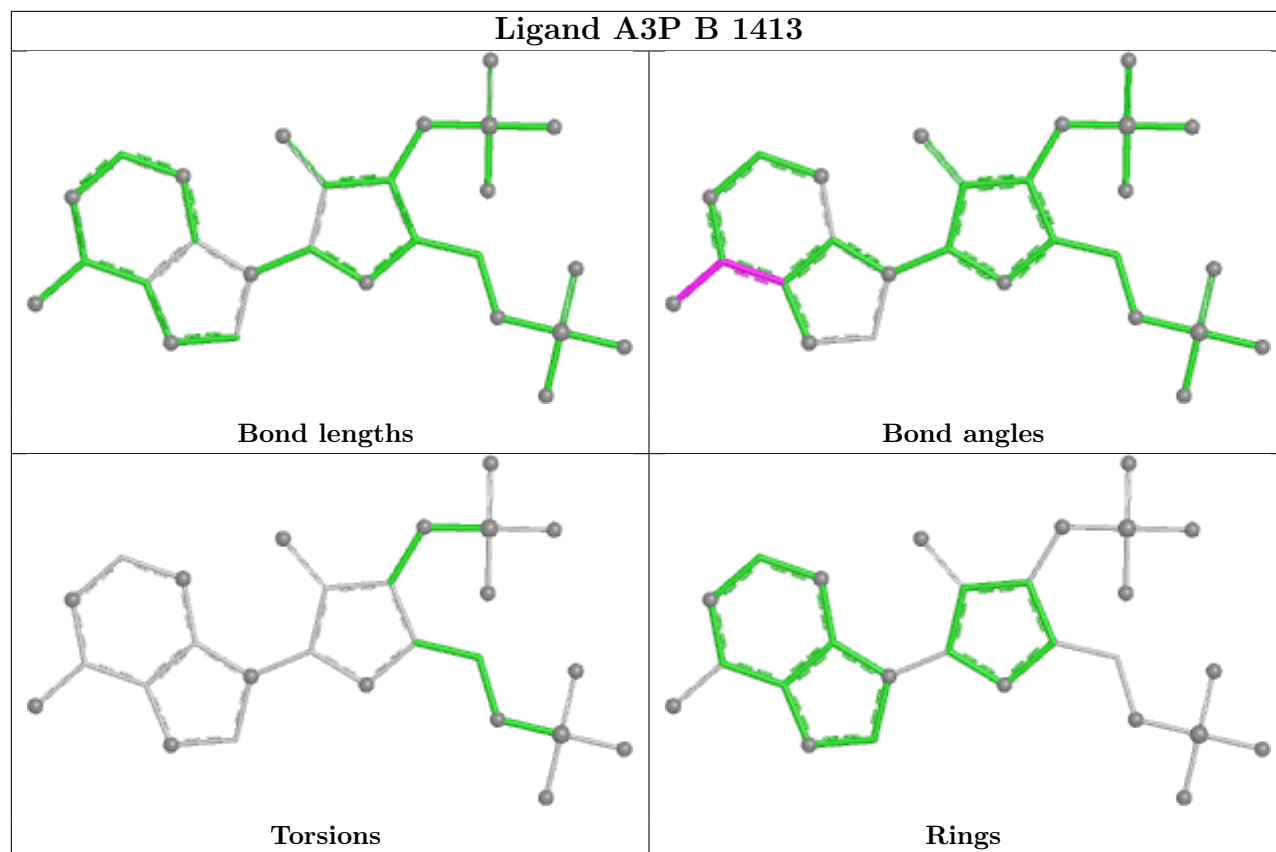
There are no ring outliers.

1 monomer is involved in 1 short contact:

Mol	Chain	Res	Type	Clashes	Symm-Clashes
8	A	2025	TLA	1	0

The following is a two-dimensional graphical depiction of Mogul quality analysis of bond lengths, bond angles, torsion angles, and ring geometry for all instances of the Ligand of Interest. In addition, ligands with molecular weight > 250 and outliers as shown on the validation Tables will also be included. For torsion angles, if less than 5% of the Mogul distribution of torsion angles is within 10 degrees of the torsion angle in question, then that torsion angle is considered an outlier. Any bond that is central to one or more torsion angles identified as an outlier by Mogul will be highlighted in the graph. For rings, the root-mean-square deviation (RMSD) between the ring in question and similar rings identified by Mogul is calculated over all ring torsion angles. If the average RMSD is greater than 60 degrees and the minimal RMSD between the ring in question and any Mogul-identified rings is also greater than 60 degrees, then that ring is considered an outlier. The outliers are highlighted in purple. The color gray indicates Mogul did not find sufficient equivalents in the CSD to analyse the geometry.





## 5.7 Other polymers [i](#)

There are no such residues in this entry.

## 5.8 Polymer linkage issues [i](#)

There are no chain breaks in this entry.

## 6 Fit of model and data [i](#)

### 6.1 Protein, DNA and RNA chains [i](#)

In the following table, the column labelled ‘#RSRZ > 2’ contains the number (and percentage) of RSRZ outliers, followed by percent RSRZ outliers for the chain as percentile scores relative to all X-ray entries and entries of similar resolution. The OWAB column contains the minimum, median, 95<sup>th</sup> percentile and maximum values of the occupancy-weighted average B-factor per residue. The column labelled ‘Q < 0.9’ lists the number of (and percentage) of residues with an average occupancy less than 0.9.

Mol	Chain	Analysed	<RSRZ>	#RSRZ>2	OWAB(Å <sup>2</sup> )	Q<0.9
1	A	670/692 (96%)	-0.15	10 (1%) 71 77	9, 32, 55, 83	3 (0%)
1	B	677/692 (97%)	0.03	15 (2%) 62 68	9, 35, 55, 74	17 (2%)
All	All	1347/1384 (97%)	-0.06	25 (1%) 66 72	9, 33, 55, 83	20 (1%)

All (25) RSRZ outliers are listed below:

Mol	Chain	Res	Type	RSRZ
1	B	1386	TRP	5.8
1	A	52	ALA	4.4
1	B	1387	ILE	4.0
1	B	2	ILE	3.8
1	B	173	ALA	3.4
1	B	1378	LEU	3.3
1	A	51	ALA	3.2
1	B	1173	ASP	3.0
1	B	1389	GLU	2.8
1	A	1173	ASP	2.8
1	B	1128	ALA	2.7
1	A	53	THR	2.7
1	A	174	GLY	2.4
1	B	1326[A]	ASN	2.4
1	A	1381	ARG	2.4
1	B	1384	ARG	2.4
1	A	1086	ASP	2.4
1	B	52	ALA	2.3
1	A	1382	GLU	2.3
1	A	54	GLY	2.3
1	B	186	ALA	2.2
1	B	1336	ARG	2.1
1	B	178	ILE	2.1
1	A	1383	GLU	2.1

*Continued on next page...*

Continued from previous page...

Mol	Chain	Res	Type	RSRZ
1	B	1390	ARG	2.1

## 6.2 Non-standard residues in protein, DNA, RNA chains [i](#)

There are no non-standard protein/DNA/RNA residues in this entry.

## 6.3 Carbohydrates [i](#)

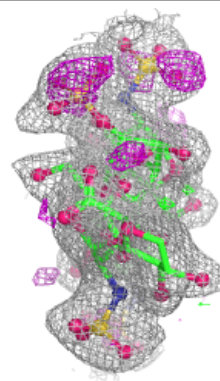
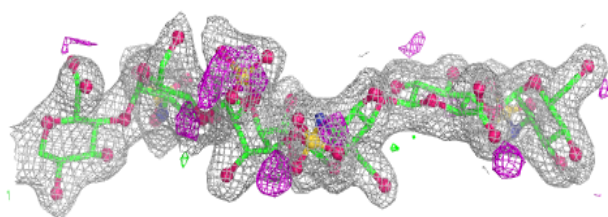
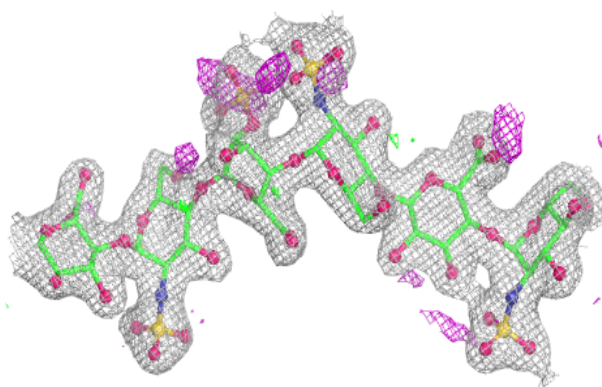
In the following table, the Atoms column lists the number of modelled atoms in the group and the number defined in the chemical component dictionary. The B-factors column lists the minimum, median, 95<sup>th</sup> percentile and maximum values of B factors of atoms in the group. The column labelled 'Q< 0.9' lists the number of atoms with occupancy less than 0.9.

Mol	Type	Chain	Res	Atoms	RSCC	RSR	B-factors(Å <sup>2</sup> )	Q<0.9
3	GLC	F	4	11/12	0.70	0.14	36,49,53,55	11
4	BDP	E	1[A]	12/13	0.78	0.12	55,57,64,66	12
3	GLC	D	4	11/12	0.80	0.14	29,37,41,42	11
4	GNS	E	2[A]	15/16	0.81	0.11	48,54,64,72	15
4	BDP	E	7	12/13	0.83	0.15	29,35,41,50	12
2	GNS	C	2	15/16	0.85	0.08	43,54,76,87	0
2	IDS	C	3	16/17	0.89	0.08	39,45,52,55	0
4	IDS	E	3[A]	16/17	0.89	0.09	39,42,49,51	16
2	BDP	C	1	12/13	0.89	0.07	45,49,56,58	0
3	GLC	F	3	11/12	0.91	0.09	33,36,39,39	0
4	GNS	E	4[B]	15/16	0.92	0.09	30,36,37,39	15
4	GNS	E	4[A]	15/16	0.92	0.09	34,37,44,49	15
2	BDP	C	5	12/13	0.94	0.07	26,28,35,38	0
2	GNS	C	4	15/16	0.94	0.07	35,40,46,49	0
3	GLC	F	1	12/12	0.94	0.07	27,29,34,34	0
3	GLC	F	2	11/12	0.94	0.07	26,28,31,32	0
4	BDP	E	5	12/13	0.95	0.06	22,25,31,33	0
2	GNS	C	6	15/16	0.96	0.07	25,28,33,36	0
3	GLC	D	2	11/12	0.97	0.05	18,23,24,25	0
3	GLC	D	3	11/12	0.97	0.06	23,28,31,32	0
4	GNS	E	6	15/16	0.98	0.05	19,24,28,32	0
3	GLC	D	1	12/12	0.98	0.04	23,24,27,29	0

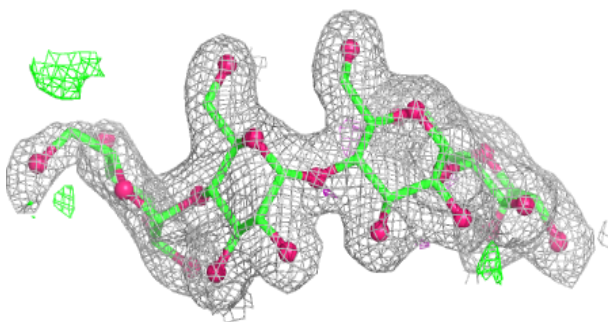
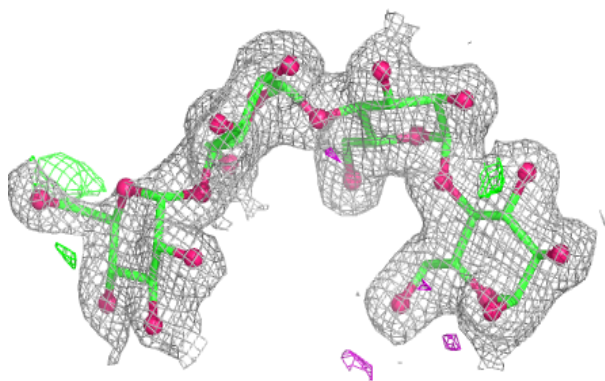
The following is a graphical depiction of the model fit to experimental electron density for oligosaccharide. Each fit is shown from different orientation to approximate a three-dimensional view.

**Electron density around Chain C:**

$2mF_o-DF_c$  (at 0.7 rmsd) in gray  
 $mF_o-DF_c$  (at 3 rmsd) in purple (negative)  
and green (positive)

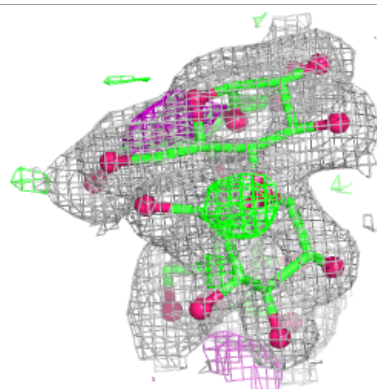
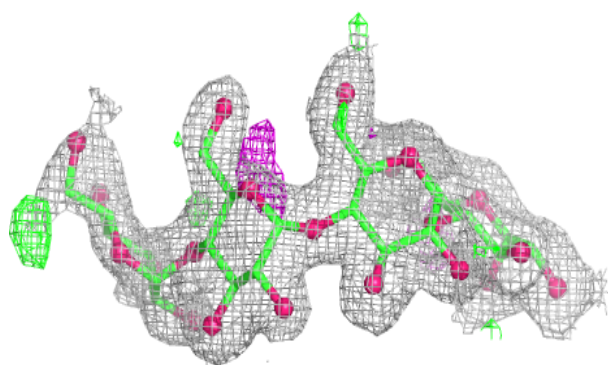
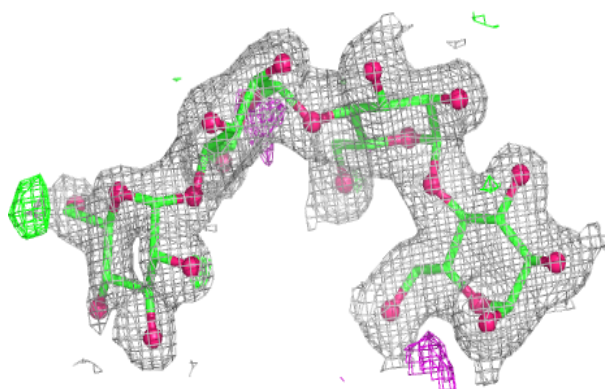
**Electron density around Chain D:**

$2mF_o-DF_c$  (at 0.7 rmsd) in gray  
 $mF_o-DF_c$  (at 3 rmsd) in purple (negative)  
and green (positive)

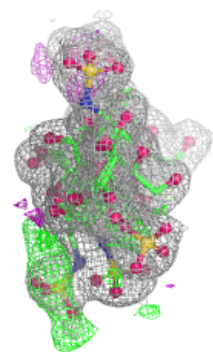
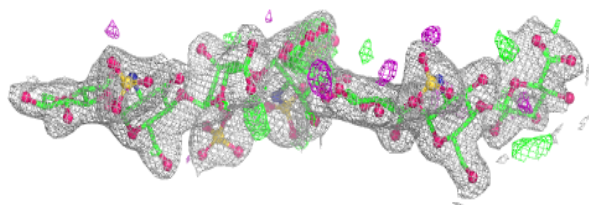
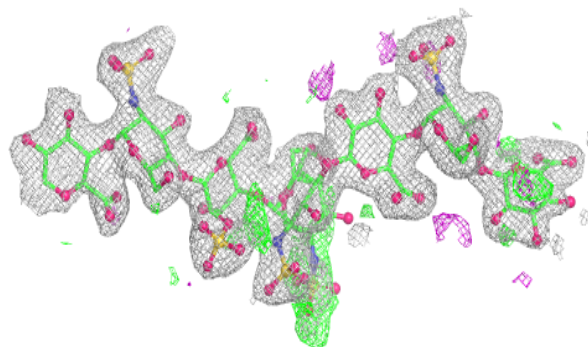


**Electron density around Chain F:**

$2mF_o-DF_c$  (at 0.7 rmsd) in gray  
 $mF_o-DF_c$  (at 3 rmsd) in purple (negative)  
and green (positive)

**Electron density around Chain E:**

$2mF_o-DF_c$  (at 0.7 rmsd) in gray  
 $mF_o-DF_c$  (at 3 rmsd) in purple (negative)  
and green (positive)



## 6.4 Ligands

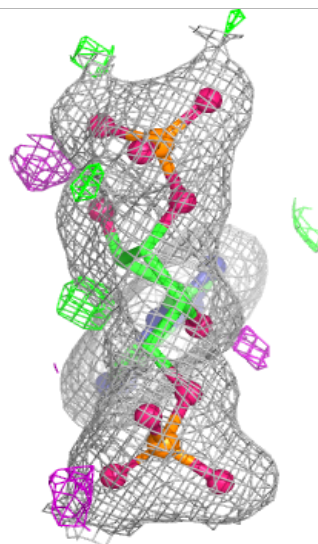
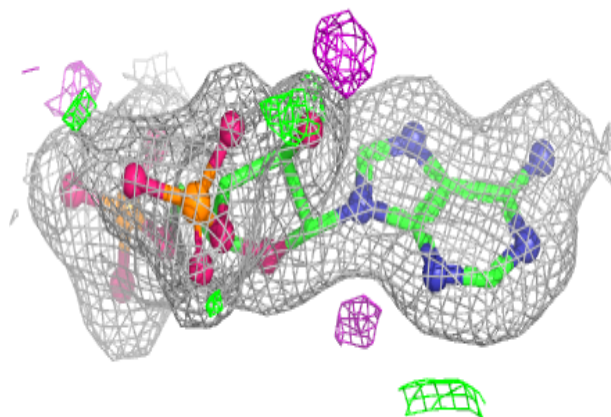
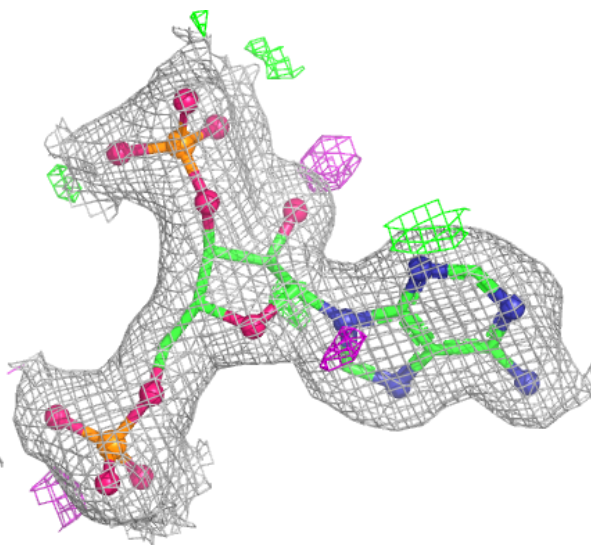
In the following table, the Atoms column lists the number of modelled atoms in the group and the number defined in the chemical component dictionary. The B-factors column lists the minimum, median, 95<sup>th</sup> percentile and maximum values of B factors of atoms in the group. The column labelled 'Q< 0.9' lists the number of atoms with occupancy less than 0.9.

Mol	Type	Chain	Res	Atoms	RSCC	RSR	B-factors(Å <sup>2</sup> )	Q<0.9
7	EDO	B	1417	4/4	0.68	0.19	34,37,42,44	4
7	EDO	A	2015	4/4	0.73	0.18	27,27,28,41	0
8	TLA	A	2025	10/10	0.76	0.14	36,38,48,48	10
7	EDO	A	2019[A]	4/4	0.77	0.21	26,28,31,33	4
7	EDO	A	2019[B]	4/4	0.77	0.21	25,31,31,32	4
9	NA	B	1420	1/1	0.79	0.10	53,53,53,53	1
9	NA	A	2029	1/1	0.82	0.10	55,55,55,55	0
5	NPO	B	1408[A]	7/10	0.84	0.18	44,53,58,63	7
9	NA	A	2026	1/1	0.84	0.13	53,53,53,53	0
7	EDO	A	2021	4/4	0.85	0.12	31,37,40,47	4
7	EDO	A	2020	4/4	0.85	0.15	31,40,45,49	4
7	EDO	A	2023	4/4	0.86	0.14	39,39,51,51	4
9	NA	A	2028	1/1	0.87	0.12	48,48,48,48	0
7	EDO	B	1414	4/4	0.87	0.10	24,25,26,32	0
8	TLA	A	2024	10/10	0.87	0.08	42,49,51,58	10
7	EDO	B	1415	4/4	0.90	0.12	31,31,33,42	4
7	EDO	A	2022	4/4	0.90	0.11	28,36,41,43	4
5	NPO	A	2007	10/10	0.90	0.09	36,46,53,56	0
7	EDO	A	2017	4/4	0.90	0.09	34,35,38,46	0
7	EDO	A	2013	4/4	0.93	0.09	32,36,39,42	0
8	TLA	B	1418	10/10	0.93	0.10	25,30,37,38	10
7	EDO	A	2014	4/4	0.94	0.08	37,37,42,46	0
9	NA	B	1419	1/1	0.95	0.04	37,37,37,37	1
7	EDO	A	2018	4/4	0.95	0.09	34,34,39,44	0
7	EDO	B	1416	4/4	0.96	0.06	19,23,24,30	4
10	CL	B	1421	1/1	0.96	0.07	37,37,37,37	1
10	CL	A	2031	1/1	0.97	0.07	40,40,40,40	1
9	NA	A	2027	1/1	0.97	0.04	41,41,41,41	0
7	EDO	A	2016	4/4	0.98	0.04	30,32,32,36	0
6	A3P	A	2012	27/27	0.98	0.05	19,22,24,26	0
6	A3P	B	1413	27/27	0.99	0.04	18,20,23,24	0
10	CL	A	2030	1/1	0.99	0.04	27,27,27,27	0

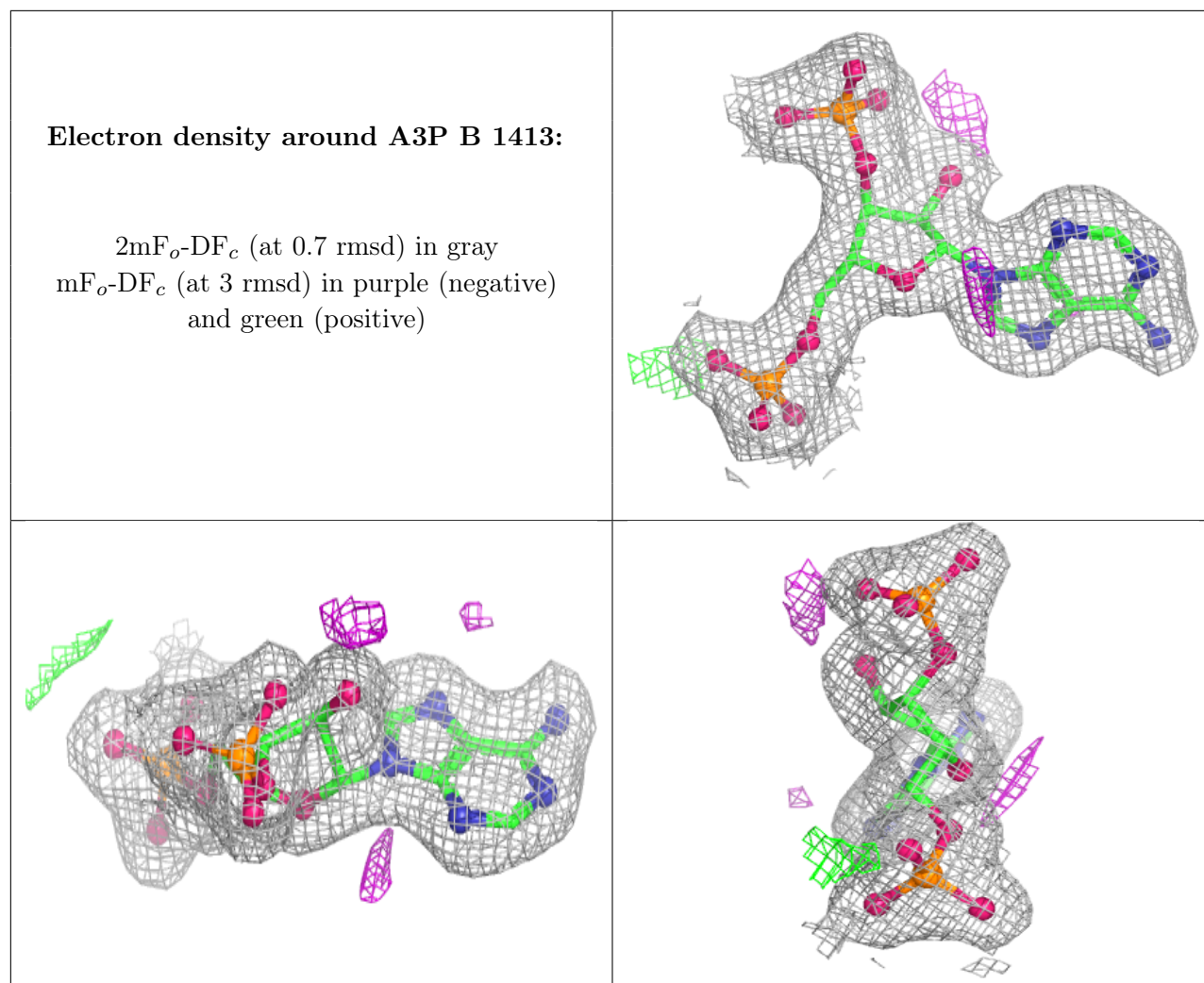
The following is a graphical depiction of the model fit to experimental electron density of all instances of the Ligand of Interest. In addition, ligands with molecular weight > 250 and outliers as shown on the geometry validation Tables will also be included. Each fit is shown from different orientation to approximate a three-dimensional view.

**Electron density around A3P A 2012:**

$2mF_o-DF_c$  (at 0.7 rmsd) in gray  
 $mF_o-DF_c$  (at 3 rmsd) in purple (negative)  
and green (positive)







## 6.5 Other polymers [i](#)

There are no such residues in this entry.