



Full wwPDB EM Validation Report ⓘ

Jul 1, 2024 – 11:23 AM EDT

PDB ID : 8T18
EMDB ID : EMD-40957
Title : Cryo-EM structure of dodecameric hub domain of CaMKII beta
Authors : Chien, C.-T.; Chiu, W.; Khan, S.
Deposited on : 2023-06-02
Resolution : 2.60 Å (reported)

This is a Full wwPDB EM Validation Report for a publicly released PDB entry.

We welcome your comments at validation@mail.wwpdb.org

A user guide is available at

<https://www.wwpdb.org/validation/2017/EMValidationReportHelp>

with specific help available everywhere you see the ⓘ symbol.

The types of validation reports are described at

<http://www.wwpdb.org/validation/2017/FAQs#types>.

The following versions of software and data (see [references ⓘ](#)) were used in the production of this report:

EMDB validation analysis : 0.0.1.dev92
MolProbity : 4.02b-467
Percentile statistics : 20191225.v01 (using entries in the PDB archive December 25th 2019)
MapQ : 1.9.13
Ideal geometry (proteins) : Engh & Huber (2001)
Ideal geometry (DNA, RNA) : Parkinson et al. (1996)
Validation Pipeline (wwPDB-VP) : 2.37.1

1 Overall quality at a glance

The following experimental techniques were used to determine the structure:

ELECTRON MICROSCOPY

The reported resolution of this entry is 2.60 Å.

Percentile scores (ranging between 0-100) for global validation metrics of the entry are shown in the following graphic. The table shows the number of entries on which the scores are based.







Metric	Whole archive (#Entries)	EM structures (#Entries)
Clashscore	158937	4297
Ramachandran outliers	154571	4023
Sidechain outliers	154315	3826

The table below summarises the geometric issues observed across the polymeric chains and their fit to the map. The red, orange, yellow and green segments of the bar indicate the fraction of residues that contain outliers for ≥ 3 , 2, 1 and 0 types of geometric quality criteria respectively. A grey segment represents the fraction of residues that are not modelled. The numeric value for each fraction is indicated below the corresponding segment, with a dot representing fractions $\leq 5\%$. The upper red bar (where present) indicates the fraction of residues that have poor fit to the EM map (all-atom inclusion $< 40\%$). The numeric value is given above the bar.

Mol	Chain	Length	Quality of chain
1	A	407	
1	B	407	
1	C	407	
1	D	407	
1	E	407	
1	F	407	
1	G	407	
1	H	407	

Continued on next page...

Continued from previous page...

Mol	Chain	Length	Quality of chain
1	I	407	
1	J	407	
1	K	407	
1	L	407	

2 Entry composition [i](#)

There is only 1 type of molecule in this entry. The entry contains 25356 atoms, of which 12420 are hydrogens and 0 are deuteriums.

In the tables below, the AltConf column contains the number of residues with at least one atom in alternate conformation and the Trace column contains the number of residues modelled with at most 2 atoms.

- Molecule 1 is a protein called Venus-tagged CaMKII Alpha Association Domain.

Mol	Chain	Residues	Atoms					AltConf	Trace	
			Total	C	H	N	O			S
1	A	135	2113	679	1035	192	203	4	0	0
1	B	135	2113	679	1035	192	203	4	0	0
1	C	135	2113	679	1035	192	203	4	0	0
1	D	135	2113	679	1035	192	203	4	0	0
1	E	135	2113	679	1035	192	203	4	0	0
1	F	135	2113	679	1035	192	203	4	0	0
1	G	135	2113	679	1035	192	203	4	0	0
1	H	135	2113	679	1035	192	203	4	0	0
1	I	135	2113	679	1035	192	203	4	0	0
1	J	135	2113	679	1035	192	203	4	0	0
1	K	135	2113	679	1035	192	203	4	0	0
1	L	135	2113	679	1035	192	203	4	0	0

There are 564 discrepancies between the modelled and reference sequences:

Chain	Residue	Modelled	Actual	Comment	Reference
A	136	MET	-	initiating methionine	UNP P42212
A	137	GLY	-	expression tag	UNP P42212
A	138	SER	-	expression tag	UNP P42212
A	139	SER	-	expression tag	UNP P42212
A	140	HIS	-	expression tag	UNP P42212
A	141	HIS	-	expression tag	UNP P42212

Continued on next page...

Continued from previous page...

Chain	Residue	Modelled	Actual	Comment	Reference
A	142	HIS	-	expression tag	UNP P42212
A	143	HIS	-	expression tag	UNP P42212
A	144	HIS	-	expression tag	UNP P42212
A	145	HIS	-	expression tag	UNP P42212
A	146	SER	-	expression tag	UNP P42212
A	147	SER	-	expression tag	UNP P42212
A	148	GLY	-	expression tag	UNP P42212
A	149	LEU	-	expression tag	UNP P42212
A	150	VAL	-	expression tag	UNP P42212
A	151	PRO	-	expression tag	UNP P42212
A	152	ARG	-	expression tag	UNP P42212
A	153	GLY	-	expression tag	UNP P42212
A	154	SER	-	expression tag	UNP P42212
A	155	HIS	-	expression tag	UNP P42212
A	156	VAL	-	expression tag	UNP P42212
A	201	LEU	PHE	conflict	UNP P42212
A	219	LEU	PHE	conflict	UNP P42212
A	220	GLY	SER	conflict	UNP P42212
A	223	LEU	VAL	conflict	UNP P42212
A	227	ALA	SER	conflict	UNP P42212
A	308	THR	MET	conflict	UNP P42212
A	318	ALA	VAL	conflict	UNP P42212
A	330	GLY	SER	conflict	UNP P42212
A	358	TYR	THR	conflict	UNP P42212
A	361	LYS	ALA	conflict	UNP P42212
A	386	LEU	HIS	conflict	UNP P42212
A	394	SER	-	linker	UNP P42212
A	395	GLY	-	linker	UNP P42212
A	396	LEU	-	linker	UNP P42212
A	397	ARG	-	linker	UNP P42212
A	398	SER	-	linker	UNP P42212
A	399	ARG	-	linker	UNP P42212
A	400	ALA	-	linker	UNP P42212
A	401	GLN	-	linker	UNP P42212
A	402	ALA	-	linker	UNP P42212
A	403	SER	-	linker	UNP P42212
A	404	ASN	-	linker	UNP P42212
A	405	SER	-	linker	UNP P42212
A	406	ALA	-	linker	UNP P42212
A	407	VAL	-	linker	UNP P42212
A	408	ASP	-	linker	UNP P42212
B	136	MET	-	initiating methionine	UNP P42212

Continued on next page...

Continued from previous page...

Chain	Residue	Modelled	Actual	Comment	Reference
B	137	GLY	-	expression tag	UNP P42212
B	138	SER	-	expression tag	UNP P42212
B	139	SER	-	expression tag	UNP P42212
B	140	HIS	-	expression tag	UNP P42212
B	141	HIS	-	expression tag	UNP P42212
B	142	HIS	-	expression tag	UNP P42212
B	143	HIS	-	expression tag	UNP P42212
B	144	HIS	-	expression tag	UNP P42212
B	145	HIS	-	expression tag	UNP P42212
B	146	SER	-	expression tag	UNP P42212
B	147	SER	-	expression tag	UNP P42212
B	148	GLY	-	expression tag	UNP P42212
B	149	LEU	-	expression tag	UNP P42212
B	150	VAL	-	expression tag	UNP P42212
B	151	PRO	-	expression tag	UNP P42212
B	152	ARG	-	expression tag	UNP P42212
B	153	GLY	-	expression tag	UNP P42212
B	154	SER	-	expression tag	UNP P42212
B	155	HIS	-	expression tag	UNP P42212
B	156	VAL	-	expression tag	UNP P42212
B	201	LEU	PHE	conflict	UNP P42212
B	219	LEU	PHE	conflict	UNP P42212
B	220	GLY	SER	conflict	UNP P42212
B	223	LEU	VAL	conflict	UNP P42212
B	227	ALA	SER	conflict	UNP P42212
B	308	THR	MET	conflict	UNP P42212
B	318	ALA	VAL	conflict	UNP P42212
B	330	GLY	SER	conflict	UNP P42212
B	358	TYR	THR	conflict	UNP P42212
B	361	LYS	ALA	conflict	UNP P42212
B	386	LEU	HIS	conflict	UNP P42212
B	394	SER	-	linker	UNP P42212
B	395	GLY	-	linker	UNP P42212
B	396	LEU	-	linker	UNP P42212
B	397	ARG	-	linker	UNP P42212
B	398	SER	-	linker	UNP P42212
B	399	ARG	-	linker	UNP P42212
B	400	ALA	-	linker	UNP P42212
B	401	GLN	-	linker	UNP P42212
B	402	ALA	-	linker	UNP P42212
B	403	SER	-	linker	UNP P42212
B	404	ASN	-	linker	UNP P42212

Continued on next page...

Continued from previous page...

Chain	Residue	Modelled	Actual	Comment	Reference
B	405	SER	-	linker	UNP P42212
B	406	ALA	-	linker	UNP P42212
B	407	VAL	-	linker	UNP P42212
B	408	ASP	-	linker	UNP P42212
C	136	MET	-	initiating methionine	UNP P42212
C	137	GLY	-	expression tag	UNP P42212
C	138	SER	-	expression tag	UNP P42212
C	139	SER	-	expression tag	UNP P42212
C	140	HIS	-	expression tag	UNP P42212
C	141	HIS	-	expression tag	UNP P42212
C	142	HIS	-	expression tag	UNP P42212
C	143	HIS	-	expression tag	UNP P42212
C	144	HIS	-	expression tag	UNP P42212
C	145	HIS	-	expression tag	UNP P42212
C	146	SER	-	expression tag	UNP P42212
C	147	SER	-	expression tag	UNP P42212
C	148	GLY	-	expression tag	UNP P42212
C	149	LEU	-	expression tag	UNP P42212
C	150	VAL	-	expression tag	UNP P42212
C	151	PRO	-	expression tag	UNP P42212
C	152	ARG	-	expression tag	UNP P42212
C	153	GLY	-	expression tag	UNP P42212
C	154	SER	-	expression tag	UNP P42212
C	155	HIS	-	expression tag	UNP P42212
C	156	VAL	-	expression tag	UNP P42212
C	201	LEU	PHE	conflict	UNP P42212
C	219	LEU	PHE	conflict	UNP P42212
C	220	GLY	SER	conflict	UNP P42212
C	223	LEU	VAL	conflict	UNP P42212
C	227	ALA	SER	conflict	UNP P42212
C	308	THR	MET	conflict	UNP P42212
C	318	ALA	VAL	conflict	UNP P42212
C	330	GLY	SER	conflict	UNP P42212
C	358	TYR	THR	conflict	UNP P42212
C	361	LYS	ALA	conflict	UNP P42212
C	386	LEU	HIS	conflict	UNP P42212
C	394	SER	-	linker	UNP P42212
C	395	GLY	-	linker	UNP P42212
C	396	LEU	-	linker	UNP P42212
C	397	ARG	-	linker	UNP P42212
C	398	SER	-	linker	UNP P42212
C	399	ARG	-	linker	UNP P42212

Continued on next page...

Continued from previous page...

Chain	Residue	Modelled	Actual	Comment	Reference
C	400	ALA	-	linker	UNP P42212
C	401	GLN	-	linker	UNP P42212
C	402	ALA	-	linker	UNP P42212
C	403	SER	-	linker	UNP P42212
C	404	ASN	-	linker	UNP P42212
C	405	SER	-	linker	UNP P42212
C	406	ALA	-	linker	UNP P42212
C	407	VAL	-	linker	UNP P42212
C	408	ASP	-	linker	UNP P42212
D	136	MET	-	initiating methionine	UNP P42212
D	137	GLY	-	expression tag	UNP P42212
D	138	SER	-	expression tag	UNP P42212
D	139	SER	-	expression tag	UNP P42212
D	140	HIS	-	expression tag	UNP P42212
D	141	HIS	-	expression tag	UNP P42212
D	142	HIS	-	expression tag	UNP P42212
D	143	HIS	-	expression tag	UNP P42212
D	144	HIS	-	expression tag	UNP P42212
D	145	HIS	-	expression tag	UNP P42212
D	146	SER	-	expression tag	UNP P42212
D	147	SER	-	expression tag	UNP P42212
D	148	GLY	-	expression tag	UNP P42212
D	149	LEU	-	expression tag	UNP P42212
D	150	VAL	-	expression tag	UNP P42212
D	151	PRO	-	expression tag	UNP P42212
D	152	ARG	-	expression tag	UNP P42212
D	153	GLY	-	expression tag	UNP P42212
D	154	SER	-	expression tag	UNP P42212
D	155	HIS	-	expression tag	UNP P42212
D	156	VAL	-	expression tag	UNP P42212
D	201	LEU	PHE	conflict	UNP P42212
D	219	LEU	PHE	conflict	UNP P42212
D	220	GLY	SER	conflict	UNP P42212
D	223	LEU	VAL	conflict	UNP P42212
D	227	ALA	SER	conflict	UNP P42212
D	308	THR	MET	conflict	UNP P42212
D	318	ALA	VAL	conflict	UNP P42212
D	330	GLY	SER	conflict	UNP P42212
D	358	TYR	THR	conflict	UNP P42212
D	361	LYS	ALA	conflict	UNP P42212
D	386	LEU	HIS	conflict	UNP P42212
D	394	SER	-	linker	UNP P42212

Continued on next page...

Continued from previous page...

Chain	Residue	Modelled	Actual	Comment	Reference
D	395	GLY	-	linker	UNP P42212
D	396	LEU	-	linker	UNP P42212
D	397	ARG	-	linker	UNP P42212
D	398	SER	-	linker	UNP P42212
D	399	ARG	-	linker	UNP P42212
D	400	ALA	-	linker	UNP P42212
D	401	GLN	-	linker	UNP P42212
D	402	ALA	-	linker	UNP P42212
D	403	SER	-	linker	UNP P42212
D	404	ASN	-	linker	UNP P42212
D	405	SER	-	linker	UNP P42212
D	406	ALA	-	linker	UNP P42212
D	407	VAL	-	linker	UNP P42212
D	408	ASP	-	linker	UNP P42212
E	136	MET	-	initiating methionine	UNP P42212
E	137	GLY	-	expression tag	UNP P42212
E	138	SER	-	expression tag	UNP P42212
E	139	SER	-	expression tag	UNP P42212
E	140	HIS	-	expression tag	UNP P42212
E	141	HIS	-	expression tag	UNP P42212
E	142	HIS	-	expression tag	UNP P42212
E	143	HIS	-	expression tag	UNP P42212
E	144	HIS	-	expression tag	UNP P42212
E	145	HIS	-	expression tag	UNP P42212
E	146	SER	-	expression tag	UNP P42212
E	147	SER	-	expression tag	UNP P42212
E	148	GLY	-	expression tag	UNP P42212
E	149	LEU	-	expression tag	UNP P42212
E	150	VAL	-	expression tag	UNP P42212
E	151	PRO	-	expression tag	UNP P42212
E	152	ARG	-	expression tag	UNP P42212
E	153	GLY	-	expression tag	UNP P42212
E	154	SER	-	expression tag	UNP P42212
E	155	HIS	-	expression tag	UNP P42212
E	156	VAL	-	expression tag	UNP P42212
E	201	LEU	PHE	conflict	UNP P42212
E	219	LEU	PHE	conflict	UNP P42212
E	220	GLY	SER	conflict	UNP P42212
E	223	LEU	VAL	conflict	UNP P42212
E	227	ALA	SER	conflict	UNP P42212
E	308	THR	MET	conflict	UNP P42212
E	318	ALA	VAL	conflict	UNP P42212

Continued on next page...

Continued from previous page...

Chain	Residue	Modelled	Actual	Comment	Reference
E	330	GLY	SER	conflict	UNP P42212
E	358	TYR	THR	conflict	UNP P42212
E	361	LYS	ALA	conflict	UNP P42212
E	386	LEU	HIS	conflict	UNP P42212
E	394	SER	-	linker	UNP P42212
E	395	GLY	-	linker	UNP P42212
E	396	LEU	-	linker	UNP P42212
E	397	ARG	-	linker	UNP P42212
E	398	SER	-	linker	UNP P42212
E	399	ARG	-	linker	UNP P42212
E	400	ALA	-	linker	UNP P42212
E	401	GLN	-	linker	UNP P42212
E	402	ALA	-	linker	UNP P42212
E	403	SER	-	linker	UNP P42212
E	404	ASN	-	linker	UNP P42212
E	405	SER	-	linker	UNP P42212
E	406	ALA	-	linker	UNP P42212
E	407	VAL	-	linker	UNP P42212
E	408	ASP	-	linker	UNP P42212
F	136	MET	-	initiating methionine	UNP P42212
F	137	GLY	-	expression tag	UNP P42212
F	138	SER	-	expression tag	UNP P42212
F	139	SER	-	expression tag	UNP P42212
F	140	HIS	-	expression tag	UNP P42212
F	141	HIS	-	expression tag	UNP P42212
F	142	HIS	-	expression tag	UNP P42212
F	143	HIS	-	expression tag	UNP P42212
F	144	HIS	-	expression tag	UNP P42212
F	145	HIS	-	expression tag	UNP P42212
F	146	SER	-	expression tag	UNP P42212
F	147	SER	-	expression tag	UNP P42212
F	148	GLY	-	expression tag	UNP P42212
F	149	LEU	-	expression tag	UNP P42212
F	150	VAL	-	expression tag	UNP P42212
F	151	PRO	-	expression tag	UNP P42212
F	152	ARG	-	expression tag	UNP P42212
F	153	GLY	-	expression tag	UNP P42212
F	154	SER	-	expression tag	UNP P42212
F	155	HIS	-	expression tag	UNP P42212
F	156	VAL	-	expression tag	UNP P42212
F	201	LEU	PHE	conflict	UNP P42212
F	219	LEU	PHE	conflict	UNP P42212

Continued on next page...

Continued from previous page...

Chain	Residue	Modelled	Actual	Comment	Reference
F	220	GLY	SER	conflict	UNP P42212
F	223	LEU	VAL	conflict	UNP P42212
F	227	ALA	SER	conflict	UNP P42212
F	308	THR	MET	conflict	UNP P42212
F	318	ALA	VAL	conflict	UNP P42212
F	330	GLY	SER	conflict	UNP P42212
F	358	TYR	THR	conflict	UNP P42212
F	361	LYS	ALA	conflict	UNP P42212
F	386	LEU	HIS	conflict	UNP P42212
F	394	SER	-	linker	UNP P42212
F	395	GLY	-	linker	UNP P42212
F	396	LEU	-	linker	UNP P42212
F	397	ARG	-	linker	UNP P42212
F	398	SER	-	linker	UNP P42212
F	399	ARG	-	linker	UNP P42212
F	400	ALA	-	linker	UNP P42212
F	401	GLN	-	linker	UNP P42212
F	402	ALA	-	linker	UNP P42212
F	403	SER	-	linker	UNP P42212
F	404	ASN	-	linker	UNP P42212
F	405	SER	-	linker	UNP P42212
F	406	ALA	-	linker	UNP P42212
F	407	VAL	-	linker	UNP P42212
F	408	ASP	-	linker	UNP P42212
G	136	MET	-	initiating methionine	UNP P42212
G	137	GLY	-	expression tag	UNP P42212
G	138	SER	-	expression tag	UNP P42212
G	139	SER	-	expression tag	UNP P42212
G	140	HIS	-	expression tag	UNP P42212
G	141	HIS	-	expression tag	UNP P42212
G	142	HIS	-	expression tag	UNP P42212
G	143	HIS	-	expression tag	UNP P42212
G	144	HIS	-	expression tag	UNP P42212
G	145	HIS	-	expression tag	UNP P42212
G	146	SER	-	expression tag	UNP P42212
G	147	SER	-	expression tag	UNP P42212
G	148	GLY	-	expression tag	UNP P42212
G	149	LEU	-	expression tag	UNP P42212
G	150	VAL	-	expression tag	UNP P42212
G	151	PRO	-	expression tag	UNP P42212
G	152	ARG	-	expression tag	UNP P42212
G	153	GLY	-	expression tag	UNP P42212

Continued on next page...

Continued from previous page...

Chain	Residue	Modelled	Actual	Comment	Reference
G	154	SER	-	expression tag	UNP P42212
G	155	HIS	-	expression tag	UNP P42212
G	156	VAL	-	expression tag	UNP P42212
G	201	LEU	PHE	conflict	UNP P42212
G	219	LEU	PHE	conflict	UNP P42212
G	220	GLY	SER	conflict	UNP P42212
G	223	LEU	VAL	conflict	UNP P42212
G	227	ALA	SER	conflict	UNP P42212
G	308	THR	MET	conflict	UNP P42212
G	318	ALA	VAL	conflict	UNP P42212
G	330	GLY	SER	conflict	UNP P42212
G	358	TYR	THR	conflict	UNP P42212
G	361	LYS	ALA	conflict	UNP P42212
G	386	LEU	HIS	conflict	UNP P42212
G	394	SER	-	linker	UNP P42212
G	395	GLY	-	linker	UNP P42212
G	396	LEU	-	linker	UNP P42212
G	397	ARG	-	linker	UNP P42212
G	398	SER	-	linker	UNP P42212
G	399	ARG	-	linker	UNP P42212
G	400	ALA	-	linker	UNP P42212
G	401	GLN	-	linker	UNP P42212
G	402	ALA	-	linker	UNP P42212
G	403	SER	-	linker	UNP P42212
G	404	ASN	-	linker	UNP P42212
G	405	SER	-	linker	UNP P42212
G	406	ALA	-	linker	UNP P42212
G	407	VAL	-	linker	UNP P42212
G	408	ASP	-	linker	UNP P42212
H	136	MET	-	initiating methionine	UNP P42212
H	137	GLY	-	expression tag	UNP P42212
H	138	SER	-	expression tag	UNP P42212
H	139	SER	-	expression tag	UNP P42212
H	140	HIS	-	expression tag	UNP P42212
H	141	HIS	-	expression tag	UNP P42212
H	142	HIS	-	expression tag	UNP P42212
H	143	HIS	-	expression tag	UNP P42212
H	144	HIS	-	expression tag	UNP P42212
H	145	HIS	-	expression tag	UNP P42212
H	146	SER	-	expression tag	UNP P42212
H	147	SER	-	expression tag	UNP P42212
H	148	GLY	-	expression tag	UNP P42212

Continued on next page...

Continued from previous page...

Chain	Residue	Modelled	Actual	Comment	Reference
H	149	LEU	-	expression tag	UNP P42212
H	150	VAL	-	expression tag	UNP P42212
H	151	PRO	-	expression tag	UNP P42212
H	152	ARG	-	expression tag	UNP P42212
H	153	GLY	-	expression tag	UNP P42212
H	154	SER	-	expression tag	UNP P42212
H	155	HIS	-	expression tag	UNP P42212
H	156	VAL	-	expression tag	UNP P42212
H	201	LEU	PHE	conflict	UNP P42212
H	219	LEU	PHE	conflict	UNP P42212
H	220	GLY	SER	conflict	UNP P42212
H	223	LEU	VAL	conflict	UNP P42212
H	227	ALA	SER	conflict	UNP P42212
H	308	THR	MET	conflict	UNP P42212
H	318	ALA	VAL	conflict	UNP P42212
H	330	GLY	SER	conflict	UNP P42212
H	358	TYR	THR	conflict	UNP P42212
H	361	LYS	ALA	conflict	UNP P42212
H	386	LEU	HIS	conflict	UNP P42212
H	394	SER	-	linker	UNP P42212
H	395	GLY	-	linker	UNP P42212
H	396	LEU	-	linker	UNP P42212
H	397	ARG	-	linker	UNP P42212
H	398	SER	-	linker	UNP P42212
H	399	ARG	-	linker	UNP P42212
H	400	ALA	-	linker	UNP P42212
H	401	GLN	-	linker	UNP P42212
H	402	ALA	-	linker	UNP P42212
H	403	SER	-	linker	UNP P42212
H	404	ASN	-	linker	UNP P42212
H	405	SER	-	linker	UNP P42212
H	406	ALA	-	linker	UNP P42212
H	407	VAL	-	linker	UNP P42212
H	408	ASP	-	linker	UNP P42212
I	136	MET	-	initiating methionine	UNP P42212
I	137	GLY	-	expression tag	UNP P42212
I	138	SER	-	expression tag	UNP P42212
I	139	SER	-	expression tag	UNP P42212
I	140	HIS	-	expression tag	UNP P42212
I	141	HIS	-	expression tag	UNP P42212
I	142	HIS	-	expression tag	UNP P42212
I	143	HIS	-	expression tag	UNP P42212

Continued on next page...

Continued from previous page...

Chain	Residue	Modelled	Actual	Comment	Reference
I	144	HIS	-	expression tag	UNP P42212
I	145	HIS	-	expression tag	UNP P42212
I	146	SER	-	expression tag	UNP P42212
I	147	SER	-	expression tag	UNP P42212
I	148	GLY	-	expression tag	UNP P42212
I	149	LEU	-	expression tag	UNP P42212
I	150	VAL	-	expression tag	UNP P42212
I	151	PRO	-	expression tag	UNP P42212
I	152	ARG	-	expression tag	UNP P42212
I	153	GLY	-	expression tag	UNP P42212
I	154	SER	-	expression tag	UNP P42212
I	155	HIS	-	expression tag	UNP P42212
I	156	VAL	-	expression tag	UNP P42212
I	201	LEU	PHE	conflict	UNP P42212
I	219	LEU	PHE	conflict	UNP P42212
I	220	GLY	SER	conflict	UNP P42212
I	223	LEU	VAL	conflict	UNP P42212
I	227	ALA	SER	conflict	UNP P42212
I	308	THR	MET	conflict	UNP P42212
I	318	ALA	VAL	conflict	UNP P42212
I	330	GLY	SER	conflict	UNP P42212
I	358	TYR	THR	conflict	UNP P42212
I	361	LYS	ALA	conflict	UNP P42212
I	386	LEU	HIS	conflict	UNP P42212
I	394	SER	-	linker	UNP P42212
I	395	GLY	-	linker	UNP P42212
I	396	LEU	-	linker	UNP P42212
I	397	ARG	-	linker	UNP P42212
I	398	SER	-	linker	UNP P42212
I	399	ARG	-	linker	UNP P42212
I	400	ALA	-	linker	UNP P42212
I	401	GLN	-	linker	UNP P42212
I	402	ALA	-	linker	UNP P42212
I	403	SER	-	linker	UNP P42212
I	404	ASN	-	linker	UNP P42212
I	405	SER	-	linker	UNP P42212
I	406	ALA	-	linker	UNP P42212
I	407	VAL	-	linker	UNP P42212
I	408	ASP	-	linker	UNP P42212
J	136	MET	-	initiating methionine	UNP P42212
J	137	GLY	-	expression tag	UNP P42212
J	138	SER	-	expression tag	UNP P42212

Continued on next page...

Continued from previous page...

Chain	Residue	Modelled	Actual	Comment	Reference
J	139	SER	-	expression tag	UNP P42212
J	140	HIS	-	expression tag	UNP P42212
J	141	HIS	-	expression tag	UNP P42212
J	142	HIS	-	expression tag	UNP P42212
J	143	HIS	-	expression tag	UNP P42212
J	144	HIS	-	expression tag	UNP P42212
J	145	HIS	-	expression tag	UNP P42212
J	146	SER	-	expression tag	UNP P42212
J	147	SER	-	expression tag	UNP P42212
J	148	GLY	-	expression tag	UNP P42212
J	149	LEU	-	expression tag	UNP P42212
J	150	VAL	-	expression tag	UNP P42212
J	151	PRO	-	expression tag	UNP P42212
J	152	ARG	-	expression tag	UNP P42212
J	153	GLY	-	expression tag	UNP P42212
J	154	SER	-	expression tag	UNP P42212
J	155	HIS	-	expression tag	UNP P42212
J	156	VAL	-	expression tag	UNP P42212
J	201	LEU	PHE	conflict	UNP P42212
J	219	LEU	PHE	conflict	UNP P42212
J	220	GLY	SER	conflict	UNP P42212
J	223	LEU	VAL	conflict	UNP P42212
J	227	ALA	SER	conflict	UNP P42212
J	308	THR	MET	conflict	UNP P42212
J	318	ALA	VAL	conflict	UNP P42212
J	330	GLY	SER	conflict	UNP P42212
J	358	TYR	THR	conflict	UNP P42212
J	361	LYS	ALA	conflict	UNP P42212
J	386	LEU	HIS	conflict	UNP P42212
J	394	SER	-	linker	UNP P42212
J	395	GLY	-	linker	UNP P42212
J	396	LEU	-	linker	UNP P42212
J	397	ARG	-	linker	UNP P42212
J	398	SER	-	linker	UNP P42212
J	399	ARG	-	linker	UNP P42212
J	400	ALA	-	linker	UNP P42212
J	401	GLN	-	linker	UNP P42212
J	402	ALA	-	linker	UNP P42212
J	403	SER	-	linker	UNP P42212
J	404	ASN	-	linker	UNP P42212
J	405	SER	-	linker	UNP P42212
J	406	ALA	-	linker	UNP P42212

Continued on next page...

Continued from previous page...

Chain	Residue	Modelled	Actual	Comment	Reference
J	407	VAL	-	linker	UNP P42212
J	408	ASP	-	linker	UNP P42212
K	136	MET	-	initiating methionine	UNP P42212
K	137	GLY	-	expression tag	UNP P42212
K	138	SER	-	expression tag	UNP P42212
K	139	SER	-	expression tag	UNP P42212
K	140	HIS	-	expression tag	UNP P42212
K	141	HIS	-	expression tag	UNP P42212
K	142	HIS	-	expression tag	UNP P42212
K	143	HIS	-	expression tag	UNP P42212
K	144	HIS	-	expression tag	UNP P42212
K	145	HIS	-	expression tag	UNP P42212
K	146	SER	-	expression tag	UNP P42212
K	147	SER	-	expression tag	UNP P42212
K	148	GLY	-	expression tag	UNP P42212
K	149	LEU	-	expression tag	UNP P42212
K	150	VAL	-	expression tag	UNP P42212
K	151	PRO	-	expression tag	UNP P42212
K	152	ARG	-	expression tag	UNP P42212
K	153	GLY	-	expression tag	UNP P42212
K	154	SER	-	expression tag	UNP P42212
K	155	HIS	-	expression tag	UNP P42212
K	156	VAL	-	expression tag	UNP P42212
K	201	LEU	PHE	conflict	UNP P42212
K	219	LEU	PHE	conflict	UNP P42212
K	220	GLY	SER	conflict	UNP P42212
K	223	LEU	VAL	conflict	UNP P42212
K	227	ALA	SER	conflict	UNP P42212
K	308	THR	MET	conflict	UNP P42212
K	318	ALA	VAL	conflict	UNP P42212
K	330	GLY	SER	conflict	UNP P42212
K	358	TYR	THR	conflict	UNP P42212
K	361	LYS	ALA	conflict	UNP P42212
K	386	LEU	HIS	conflict	UNP P42212
K	394	SER	-	linker	UNP P42212
K	395	GLY	-	linker	UNP P42212
K	396	LEU	-	linker	UNP P42212
K	397	ARG	-	linker	UNP P42212
K	398	SER	-	linker	UNP P42212
K	399	ARG	-	linker	UNP P42212
K	400	ALA	-	linker	UNP P42212
K	401	GLN	-	linker	UNP P42212

Continued on next page...

Continued from previous page...

Chain	Residue	Modelled	Actual	Comment	Reference
K	402	ALA	-	linker	UNP P42212
K	403	SER	-	linker	UNP P42212
K	404	ASN	-	linker	UNP P42212
K	405	SER	-	linker	UNP P42212
K	406	ALA	-	linker	UNP P42212
K	407	VAL	-	linker	UNP P42212
K	408	ASP	-	linker	UNP P42212
L	136	MET	-	initiating methionine	UNP P42212
L	137	GLY	-	expression tag	UNP P42212
L	138	SER	-	expression tag	UNP P42212
L	139	SER	-	expression tag	UNP P42212
L	140	HIS	-	expression tag	UNP P42212
L	141	HIS	-	expression tag	UNP P42212
L	142	HIS	-	expression tag	UNP P42212
L	143	HIS	-	expression tag	UNP P42212
L	144	HIS	-	expression tag	UNP P42212
L	145	HIS	-	expression tag	UNP P42212
L	146	SER	-	expression tag	UNP P42212
L	147	SER	-	expression tag	UNP P42212
L	148	GLY	-	expression tag	UNP P42212
L	149	LEU	-	expression tag	UNP P42212
L	150	VAL	-	expression tag	UNP P42212
L	151	PRO	-	expression tag	UNP P42212
L	152	ARG	-	expression tag	UNP P42212
L	153	GLY	-	expression tag	UNP P42212
L	154	SER	-	expression tag	UNP P42212
L	155	HIS	-	expression tag	UNP P42212
L	156	VAL	-	expression tag	UNP P42212
L	201	LEU	PHE	conflict	UNP P42212
L	219	LEU	PHE	conflict	UNP P42212
L	220	GLY	SER	conflict	UNP P42212
L	223	LEU	VAL	conflict	UNP P42212
L	227	ALA	SER	conflict	UNP P42212
L	308	THR	MET	conflict	UNP P42212
L	318	ALA	VAL	conflict	UNP P42212
L	330	GLY	SER	conflict	UNP P42212
L	358	TYR	THR	conflict	UNP P42212
L	361	LYS	ALA	conflict	UNP P42212
L	386	LEU	HIS	conflict	UNP P42212
L	394	SER	-	linker	UNP P42212
L	395	GLY	-	linker	UNP P42212
L	396	LEU	-	linker	UNP P42212

Continued on next page...

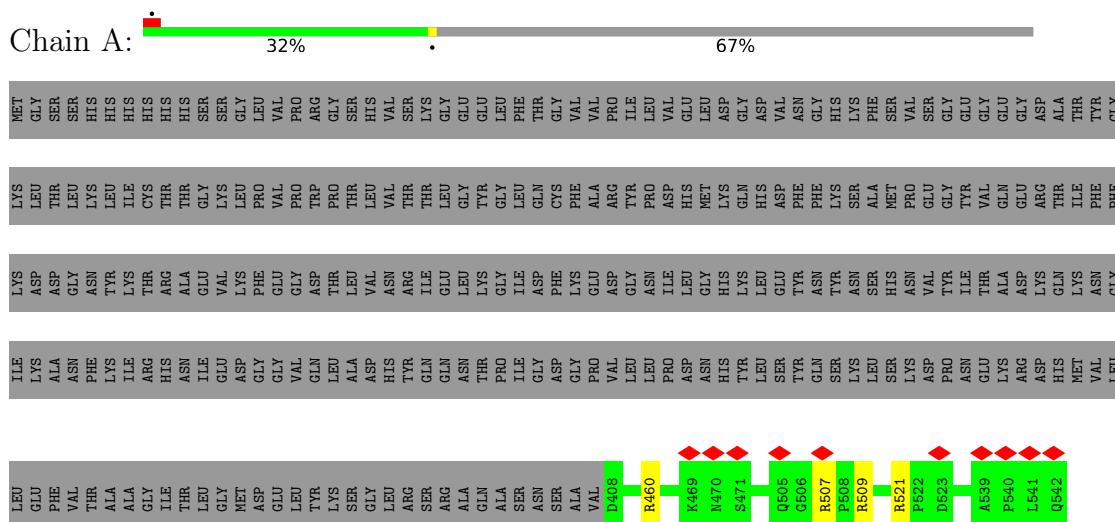
Continued from previous page...

Chain	Residue	Modelled	Actual	Comment	Reference
L	397	ARG	-	linker	UNP P42212
L	398	SER	-	linker	UNP P42212
L	399	ARG	-	linker	UNP P42212
L	400	ALA	-	linker	UNP P42212
L	401	GLN	-	linker	UNP P42212
L	402	ALA	-	linker	UNP P42212
L	403	SER	-	linker	UNP P42212
L	404	ASN	-	linker	UNP P42212
L	405	SER	-	linker	UNP P42212
L	406	ALA	-	linker	UNP P42212
L	407	VAL	-	linker	UNP P42212
L	408	ASP	-	linker	UNP P42212

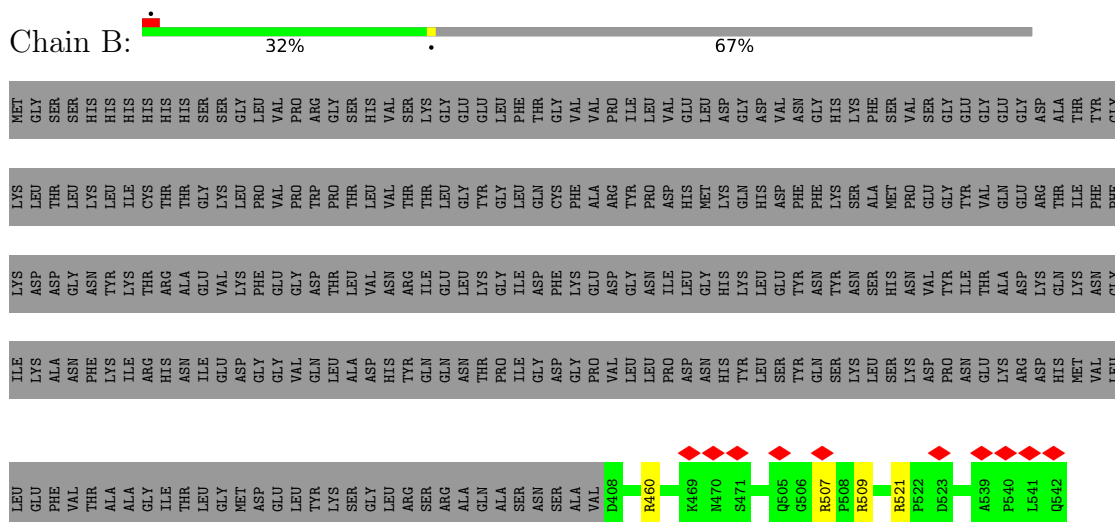
3 Residue-property plots

These plots are drawn for all protein, RNA, DNA and oligosaccharide chains in the entry. The first graphic for a chain summarises the proportions of the various outlier classes displayed in the second graphic. The second graphic shows the sequence view annotated by issues in geometry and atom inclusion in map density. Residues are color-coded according to the number of geometric quality criteria for which they contain at least one outlier: green = 0, yellow = 1, orange = 2 and red = 3 or more. A red diamond above a residue indicates a poor fit to the EM map for this residue (all-atom inclusion < 40%). Stretches of 2 or more consecutive residues without any outlier are shown as a green connector. Residues present in the sample, but not in the model, are shown in grey.

- Molecule 1: Venus-tagged CaMKII Alpha Association Domain



- Molecule 1: Venus-tagged CaMKII Alpha Association Domain



- Molecule 1: Venus-tagged CaMKII Alpha Association Domain

ILE
LYS
PHE
VAL
THR
LYS
PHE
THR
SER
SER
SER
GLY
GLY
GLY
GLY
MET
ASP
ASP
GLY
GLY
VAL
VAL
GLN
GLN
LEU
LEU
ALA
ASP
HIS
HIS
TYR
GLN
GLN
ASP
GLY
PRO
VAL
LEU
LEU
PRO
PRO
ASP
ASN
HIS
TYR
SER
SER
GLN
GLN
ASP
GLY
PRO
VAL

LEU
GLY
PHE
VAL
THR
LYS
PHE
THR
SER
SER
GLY
GLY
MET
ASP
ASP
GLY
GLY
VAL
VAL
GLN
GLN
LEU
LEU
ALA
ASP
HIS
HIS
TYR
GLN
GLN
ASP
GLY
PRO
VAL
D469
R460
K469
N470
S471
Q505
Q506
R507
P508
R509
R521
P522
D523
A539
P540
L541
Q542

• Molecule 1: Venus-tagged CaMKII Alpha Association Domain

Chain L: 32% 67%

MET
GLY
SER
SER
HIS
HIS
HIS
HIS
HIS
HIS
HIS
SER
SER
SER
SER
LEU
LEU
VAL
VAL
PRO
PRO
ARG
TRP
ARG
PRO
GLY
THR
SER
HIS
VAL
VAL
VAL
SER
THR
THR
LYS
GLY
GLY
GLU
GLU
LEU
PHE
LEU
GLY
PHE
VAL
VAL
PRO
PRO
ILE
TYR
ILE
ILE
VAL
ASP
HIS
GLU
LEU
MET
LYS
GLN
GLY
HIS
ASP
VAL
SER
SER
MET
SER
VAL
SER
GLY
GLY
GLY
GLU
TYR

LYS
LEU
THR
LEU
SER
LYS
ILE
CYS
THR
THR
GLY
SER
LYS
PRO
VAL
VAL
TRP
TRP
THR
LEU
VAL
ASN
VAL
SER
THR
THR
LYS
TYR
GLY
PHE
PHE
HIS
LYS
SER
MET
SER
VAL
GLY
TYR
GLY
VAL
GLN
GLY
GLY
THR
GLY
PHE
PHE
GLY

LYS
ASP
GLY
ASN
TYR
LYS
THR
ARG
GLU
VAL
PHE
GLY
GLY
GLY
GLY
THR
THR
LEU
VAL
ASP
VAL
ASN
ARG
TYR
SER
GLN
GLN
ASN
LEU
LYS
GLY
ASP
PHE
LYS
GLU
ASP
GLY
GLY
ASN
ILE
ILE
SER
ASP
PHE
GLY
GLY
VAL
VAL
LEU
LEU
PRO
PRO
ILE
ILE
LEU
LEU
ASN
LEU
GLY
HIS
LYS
LEU
LEU
TYR
SER
TYR
ASN
TYR
HIS
SER
SER
HIS
VAL
VAL
TYR
ILE
THR
ALA
ALA
ASP
LYS
GLN
ASP
HIS
MET
VAL
ASN
GLY

ILE
LYS
ALA
ASN
PHE
LYS
ILE
ARG
HIS
ASN
GLU
VAL
ASP
GLY
GLY
GLY
VAL
VAL
GLN
LEU
LEU
ALA
ASP
VAL
HIS
LEU
TYR
SER
SER
GLN
GLN
ALA
ASN
THR
PRO
ILE
ILE
GLY
ASP
SER
SER
ALA
VAL
VAL
VAL
LEU
LEU
LEU
LEU
ASN
ASN
TYR
TYR
SER
SER
TYR
GLN
SER
LYS
LEU
SER
SER
HIS
HIS
ASN
VAL
PRO
ASN
GLU
GLY
LYS
ALA
ARG
ASP
HIS
MET
VAL
ASN
LEU

LEU
GLU
PHE
VAL
THR
ALA
GLY
ILE
ARG
HIS
THR
THR
LEU
MET
MET
ASP
GLY
GLY
GLU
LEU
TYR
TYR
SER
SER
GLY
LEU
TYR
SER
SER
SER
ALA
VAL
D469
R460
K469
N470
S471
Q505
Q506
R507
P508
R509
D523
A539
P540
L541
Q542

4 Experimental information

Property	Value	Source
EM reconstruction method	SINGLE PARTICLE	Depositor
Imposed symmetry	POINT, Not provided	
Number of particles used	185091	Depositor
Resolution determination method	FSC 0.143 CUT-OFF	Depositor
CTF correction method	PHASE FLIPPING AND AMPLITUDE CORRECTION	Depositor
Microscope	FEI TITAN KRIOS	Depositor
Voltage (kV)	300	Depositor
Electron dose ($e^-/\text{\AA}^2$)	60	Depositor
Minimum defocus (nm)	600	Depositor
Maximum defocus (nm)	1500	Depositor
Magnification	Not provided	
Image detector	GATAN K3 BIOQUANTUM (6k x 4k)	Depositor
Maximum map value	2.107	Depositor
Minimum map value	-1.277	Depositor
Average map value	-0.000	Depositor
Map value standard deviation	0.035	Depositor
Recommended contour level	0.2	Depositor
Map size (\AA)	331.85278, 331.85278, 331.85278	wwPDB
Map dimensions	384, 384, 384	wwPDB
Map angles ($^\circ$)	90.0, 90.0, 90.0	wwPDB
Pixel spacing (\AA)	0.86419994, 0.86419994, 0.86419994	Depositor

5 Model quality [i](#)

5.1 Standard geometry [i](#)

The Z score for a bond length (or angle) is the number of standard deviations the observed value is removed from the expected value. A bond length (or angle) with $|Z| > 5$ is considered an outlier worth inspection. RMSZ is the root-mean-square of all Z scores of the bond lengths (or angles).

Mol	Chain	Bond lengths		Bond angles	
		RMSZ	# Z >5	RMSZ	# Z >5
1	A	0.67	0/1106	1.03	4/1501 (0.3%)
1	B	0.68	0/1106	1.02	4/1501 (0.3%)
1	C	0.67	0/1106	1.02	3/1501 (0.2%)
1	D	0.67	0/1106	1.02	3/1501 (0.2%)
1	E	0.67	0/1106	1.02	4/1501 (0.3%)
1	F	0.67	0/1106	1.02	4/1501 (0.3%)
1	G	0.67	0/1106	1.02	4/1501 (0.3%)
1	H	0.67	0/1106	1.02	4/1501 (0.3%)
1	I	0.67	0/1106	1.02	4/1501 (0.3%)
1	J	0.67	0/1106	1.02	3/1501 (0.2%)
1	K	0.67	0/1106	1.02	4/1501 (0.3%)
1	L	0.67	0/1106	1.02	3/1501 (0.2%)
All	All	0.67	0/13272	1.02	44/18012 (0.2%)

There are no bond length outliers.

All (44) bond angle outliers are listed below:

Mol	Chain	Res	Type	Atoms	Z	Observed(°)	Ideal(°)
1	A	507	ARG	NE-CZ-NH2	8.27	124.43	120.30
1	K	507	ARG	NE-CZ-NH2	8.21	124.41	120.30
1	B	507	ARG	NE-CZ-NH2	8.00	124.30	120.30
1	E	507	ARG	NE-CZ-NH2	7.98	124.29	120.30
1	H	507	ARG	NE-CZ-NH2	7.97	124.29	120.30
1	C	507	ARG	NE-CZ-NH2	7.97	124.28	120.30
1	D	507	ARG	NE-CZ-NH2	7.93	124.27	120.30
1	G	507	ARG	NE-CZ-NH2	7.85	124.23	120.30
1	F	507	ARG	NE-CZ-NH2	7.77	124.18	120.30
1	I	507	ARG	NE-CZ-NH2	7.75	124.18	120.30
1	J	507	ARG	NE-CZ-NH2	7.63	124.11	120.30
1	L	507	ARG	NE-CZ-NH2	7.46	124.03	120.30
1	E	460	ARG	NE-CZ-NH2	5.94	123.27	120.30
1	K	460	ARG	NE-CZ-NH2	5.94	123.27	120.30
1	A	460	ARG	NE-CZ-NH2	5.89	123.24	120.30

Continued on next page...

Continued from previous page...

Mol	Chain	Res	Type	Atoms	Z	Observed(°)	Ideal(°)
1	D	460	ARG	NE-CZ-NH2	5.89	123.24	120.30
1	F	460	ARG	NE-CZ-NH2	5.89	123.24	120.30
1	G	460	ARG	NE-CZ-NH2	5.89	123.24	120.30
1	J	460	ARG	NE-CZ-NH2	5.89	123.24	120.30
1	B	460	ARG	NE-CZ-NH2	5.88	123.24	120.30
1	H	460	ARG	NE-CZ-NH2	5.88	123.24	120.30
1	C	460	ARG	NE-CZ-NH2	5.85	123.22	120.30
1	L	460	ARG	NE-CZ-NH2	5.85	123.22	120.30
1	I	460	ARG	NE-CZ-NH2	5.83	123.22	120.30
1	H	509	ARG	NE-CZ-NH2	5.80	123.20	120.30
1	L	509	ARG	NE-CZ-NH2	5.68	123.14	120.30
1	K	509	ARG	NE-CZ-NH2	5.62	123.11	120.30
1	A	509	ARG	NE-CZ-NH2	5.59	123.10	120.30
1	B	509	ARG	NE-CZ-NH2	5.52	123.06	120.30
1	E	509	ARG	NE-CZ-NH2	5.52	123.06	120.30
1	J	509	ARG	NE-CZ-NH2	5.49	123.05	120.30
1	G	521	ARG	NE-CZ-NH2	5.47	123.04	120.30
1	H	521	ARG	NE-CZ-NH2	5.41	123.00	120.30
1	G	509	ARG	NE-CZ-NH2	5.39	123.00	120.30
1	I	509	ARG	NE-CZ-NH2	5.33	122.96	120.30
1	C	521	ARG	NE-CZ-NH2	5.27	122.94	120.30
1	B	521	ARG	NE-CZ-NH2	5.26	122.93	120.30
1	F	509	ARG	NE-CZ-NH2	5.20	122.90	120.30
1	D	509	ARG	NE-CZ-NH2	5.10	122.85	120.30
1	F	521	ARG	NE-CZ-NH2	5.09	122.84	120.30
1	A	521	ARG	NE-CZ-NH2	5.05	122.82	120.30
1	I	521	ARG	NE-CZ-NH2	5.04	122.82	120.30
1	E	521	ARG	NE-CZ-NH2	5.02	122.81	120.30
1	K	521	ARG	NE-CZ-NH2	5.01	122.81	120.30

There are no chirality outliers.

There are no planarity outliers.

5.2 Too-close contacts

In the following table, the Non-H and H(model) columns list the number of non-hydrogen atoms and hydrogen atoms in the chain respectively. The H(added) column lists the number of hydrogen atoms added and optimized by MolProbity. The Clashes column lists the number of clashes within the asymmetric unit, whereas Symm-Clashes lists symmetry-related clashes.

Mol	Chain	Non-H	H(model)	H(added)	Clashes	Symm-Clashes
1	A	1078	1035	1034	0	0
1	B	1078	1035	1034	0	0
1	C	1078	1035	1034	0	0
1	D	1078	1035	1034	0	0
1	E	1078	1035	1034	0	0
1	F	1078	1035	1034	0	0
1	G	1078	1035	1034	0	0
1	H	1078	1035	1034	0	0
1	I	1078	1035	1034	0	0
1	J	1078	1035	1034	0	0
1	K	1078	1035	1034	0	0
1	L	1078	1035	1034	0	0
All	All	12936	12420	12408	0	0

The all-atom clashscore is defined as the number of clashes found per 1000 atoms (including hydrogen atoms). The all-atom clashscore for this structure is 0.

There are no clashes within the asymmetric unit.

There are no symmetry-related clashes.

5.3 Torsion angles [i](#)

5.3.1 Protein backbone [i](#)

In the following table, the Percentiles column shows the percent Ramachandran outliers of the chain as a percentile score with respect to all PDB entries followed by that with respect to all EM entries.

The Analysed column shows the number of residues for which the backbone conformation was analysed, and the total number of residues.

Mol	Chain	Analysed	Favoured	Allowed	Outliers	Percentiles	
1	A	133/407 (33%)	129 (97%)	4 (3%)	0	100	100
1	B	133/407 (33%)	128 (96%)	5 (4%)	0	100	100
1	C	133/407 (33%)	130 (98%)	3 (2%)	0	100	100
1	D	133/407 (33%)	128 (96%)	5 (4%)	0	100	100
1	E	133/407 (33%)	129 (97%)	4 (3%)	0	100	100
1	F	133/407 (33%)	129 (97%)	4 (3%)	0	100	100
1	G	133/407 (33%)	129 (97%)	4 (3%)	0	100	100
1	H	133/407 (33%)	128 (96%)	5 (4%)	0	100	100

Continued on next page...

Continued from previous page...

Mol	Chain	Analysed	Favoured	Allowed	Outliers	Percentiles	
1	I	133/407 (33%)	130 (98%)	3 (2%)	0	100	100
1	J	133/407 (33%)	129 (97%)	4 (3%)	0	100	100
1	K	133/407 (33%)	128 (96%)	5 (4%)	0	100	100
1	L	133/407 (33%)	130 (98%)	3 (2%)	0	100	100
All	All	1596/4884 (33%)	1547 (97%)	49 (3%)	0	100	100

There are no Ramachandran outliers to report.

5.3.2 Protein sidechains [i](#)

In the following table, the Percentiles column shows the percent sidechain outliers of the chain as a percentile score with respect to all PDB entries followed by that with respect to all EM entries.

The Analysed column shows the number of residues for which the sidechain conformation was analysed, and the total number of residues.

Mol	Chain	Analysed	Rotameric	Outliers	Percentiles	
1	A	115/347 (33%)	115 (100%)	0	100	100
1	B	115/347 (33%)	115 (100%)	0	100	100
1	C	115/347 (33%)	115 (100%)	0	100	100
1	D	115/347 (33%)	115 (100%)	0	100	100
1	E	115/347 (33%)	115 (100%)	0	100	100
1	F	115/347 (33%)	115 (100%)	0	100	100
1	G	115/347 (33%)	115 (100%)	0	100	100
1	H	115/347 (33%)	115 (100%)	0	100	100
1	I	115/347 (33%)	115 (100%)	0	100	100
1	J	115/347 (33%)	115 (100%)	0	100	100
1	K	115/347 (33%)	115 (100%)	0	100	100
1	L	115/347 (33%)	115 (100%)	0	100	100
All	All	1380/4164 (33%)	1380 (100%)	0	100	100

There are no protein residues with a non-rotameric sidechain to report.

Sometimes sidechains can be flipped to improve hydrogen bonding and reduce clashes. All (3) such sidechains are listed below:

Mol	Chain	Res	Type
1	A	520	HIS
1	D	520	HIS
1	K	520	HIS

5.3.3 RNA [i](#)

There are no RNA molecules in this entry.

5.4 Non-standard residues in protein, DNA, RNA chains [i](#)

There are no non-standard protein/DNA/RNA residues in this entry.

5.5 Carbohydrates [i](#)

There are no monosaccharides in this entry.

5.6 Ligand geometry [i](#)

There are no ligands in this entry.

5.7 Other polymers [i](#)

There are no such residues in this entry.

5.8 Polymer linkage issues [i](#)

There are no chain breaks in this entry.

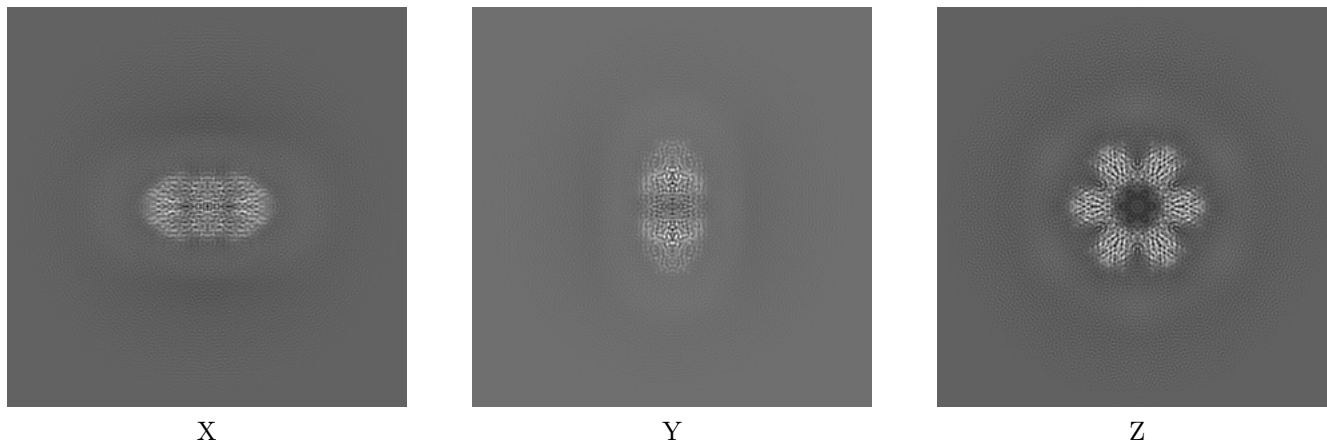
6 Map visualisation [i](#)

This section contains visualisations of the EMDB entry EMD-40957. These allow visual inspection of the internal detail of the map and identification of artifacts.

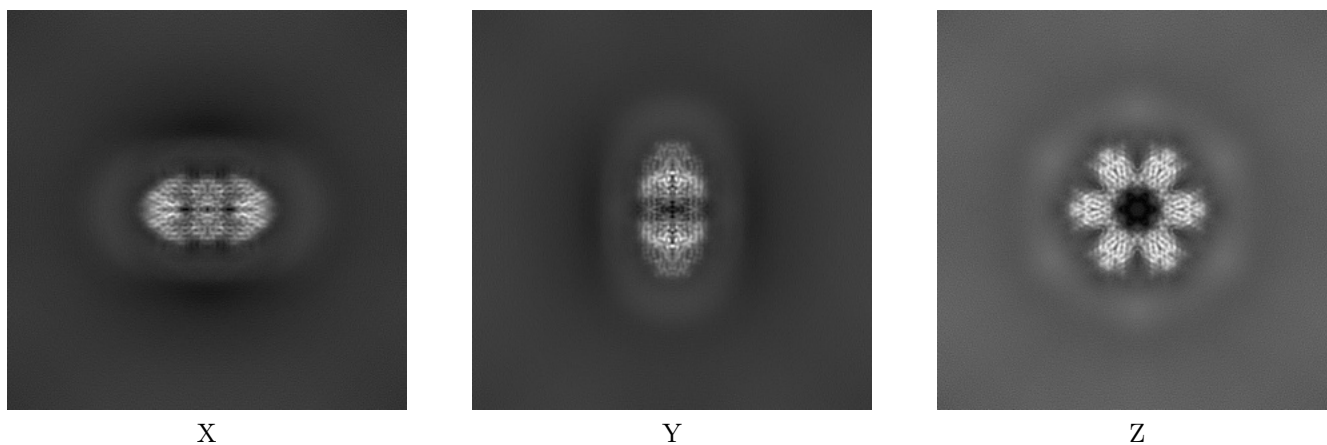
Images derived from a raw map, generated by summing the deposited half-maps, are presented below the corresponding image components of the primary map to allow further visual inspection and comparison with those of the primary map.

6.1 Orthogonal projections [i](#)

6.1.1 Primary map



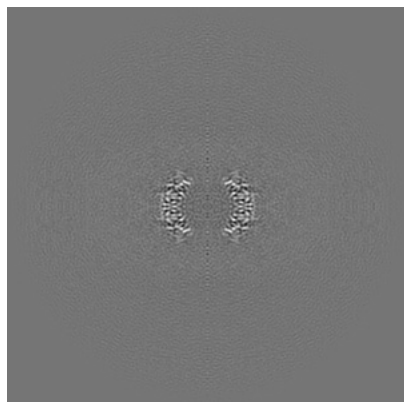
6.1.2 Raw map



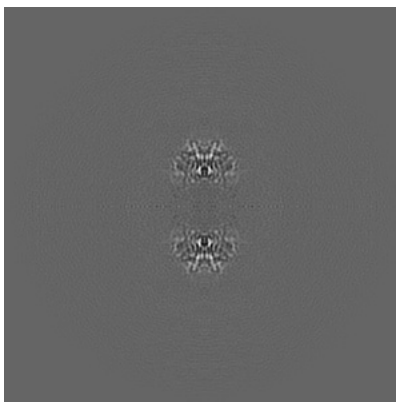
The images above show the map projected in three orthogonal directions.

6.2 Central slices [i](#)

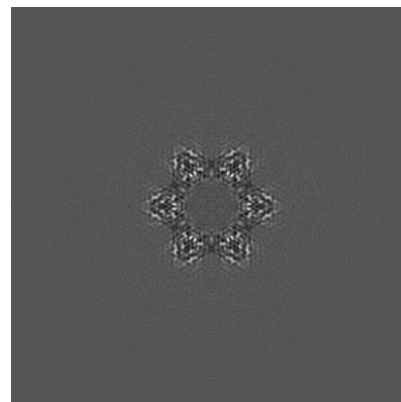
6.2.1 Primary map



X Index: 192

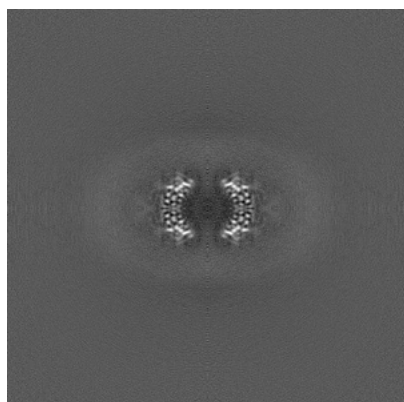


Y Index: 192

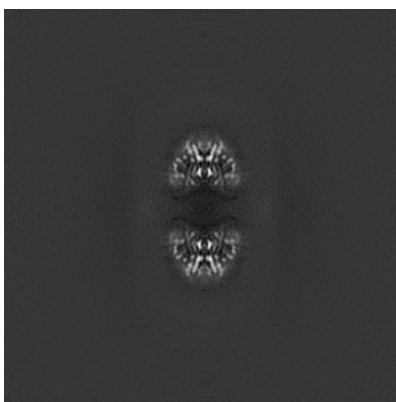


Z Index: 192

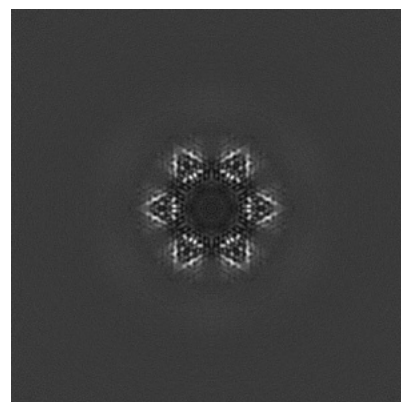
6.2.2 Raw map



X Index: 192



Y Index: 192

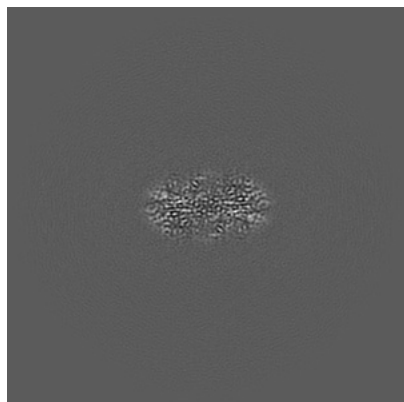


Z Index: 192

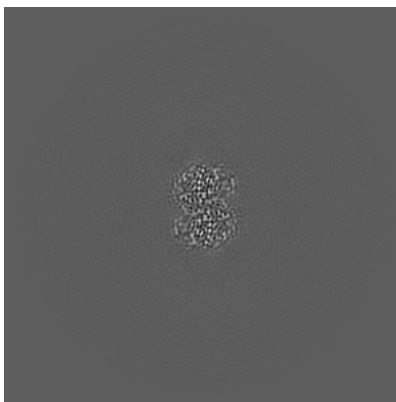
The images above show central slices of the map in three orthogonal directions.

6.3 Largest variance slices [i](#)

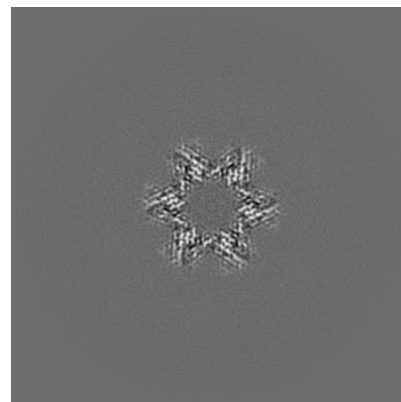
6.3.1 Primary map



X Index: 164

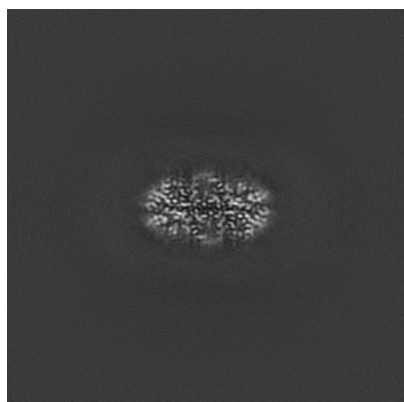


Y Index: 157

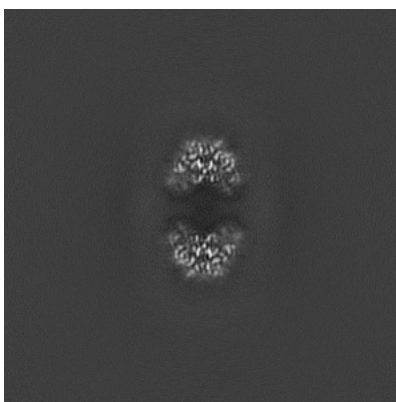


Z Index: 196

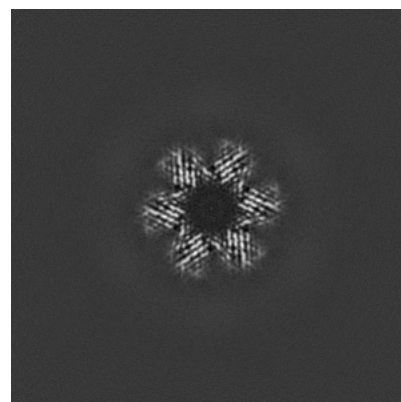
6.3.2 Raw map



X Index: 220



Y Index: 195

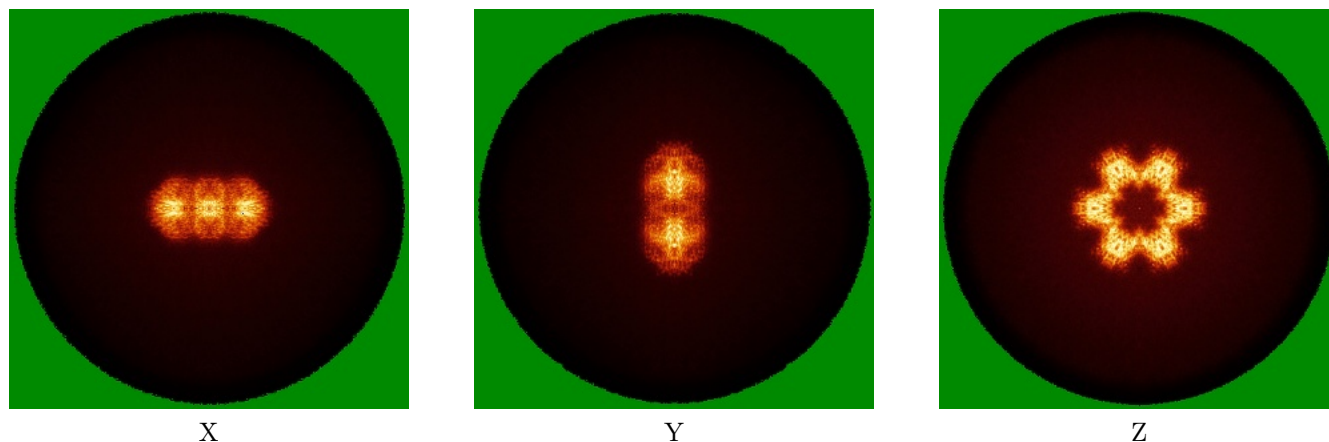


Z Index: 188

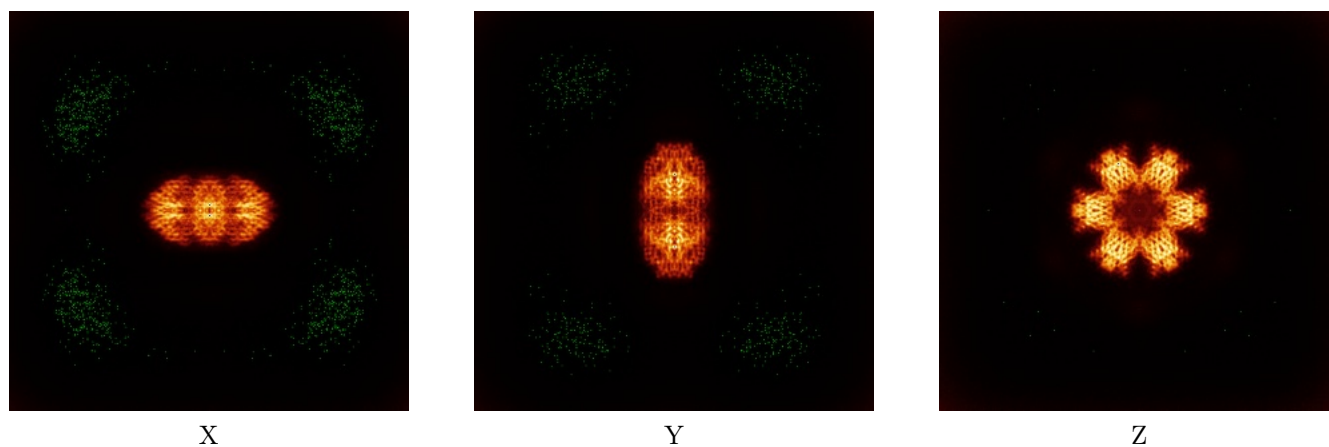
The images above show the largest variance slices of the map in three orthogonal directions.

6.4 Orthogonal standard-deviation projections (False-color) [i](#)

6.4.1 Primary map



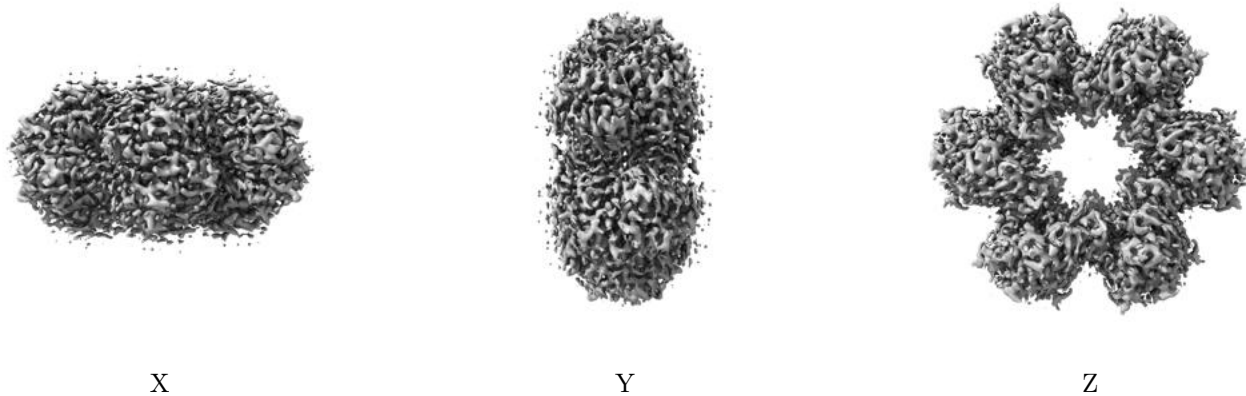
6.4.2 Raw map



The images above show the map standard deviation projections with false color in three orthogonal directions. Minimum values are shown in green, max in blue, and dark to light orange shades represent small to large values respectively.

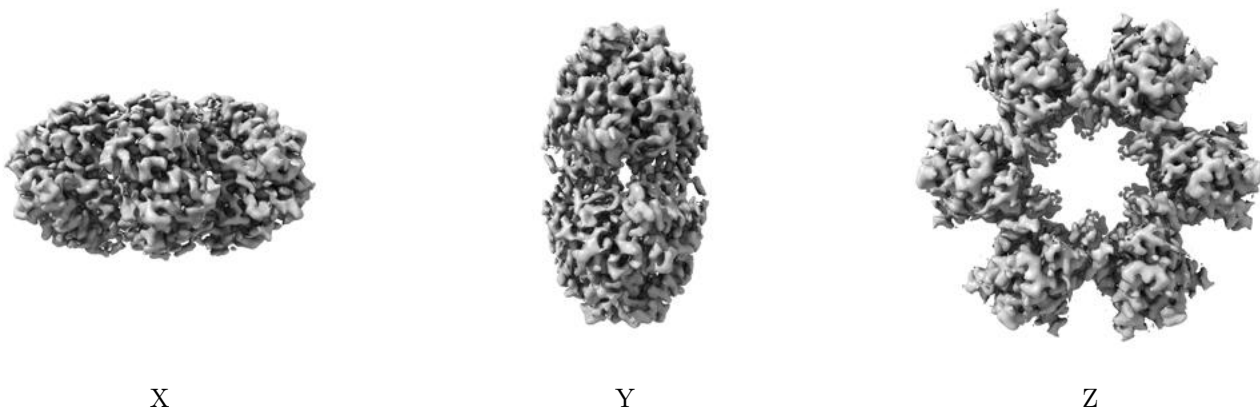
6.5 Orthogonal surface views [i](#)

6.5.1 Primary map



The images above show the 3D surface view of the map at the recommended contour level 0.2. These images, in conjunction with the slice images, may facilitate assessment of whether an appropriate contour level has been provided.

6.5.2 Raw map



These images show the 3D surface of the raw map. The raw map's contour level was selected so that its surface encloses the same volume as the primary map does at its recommended contour level.

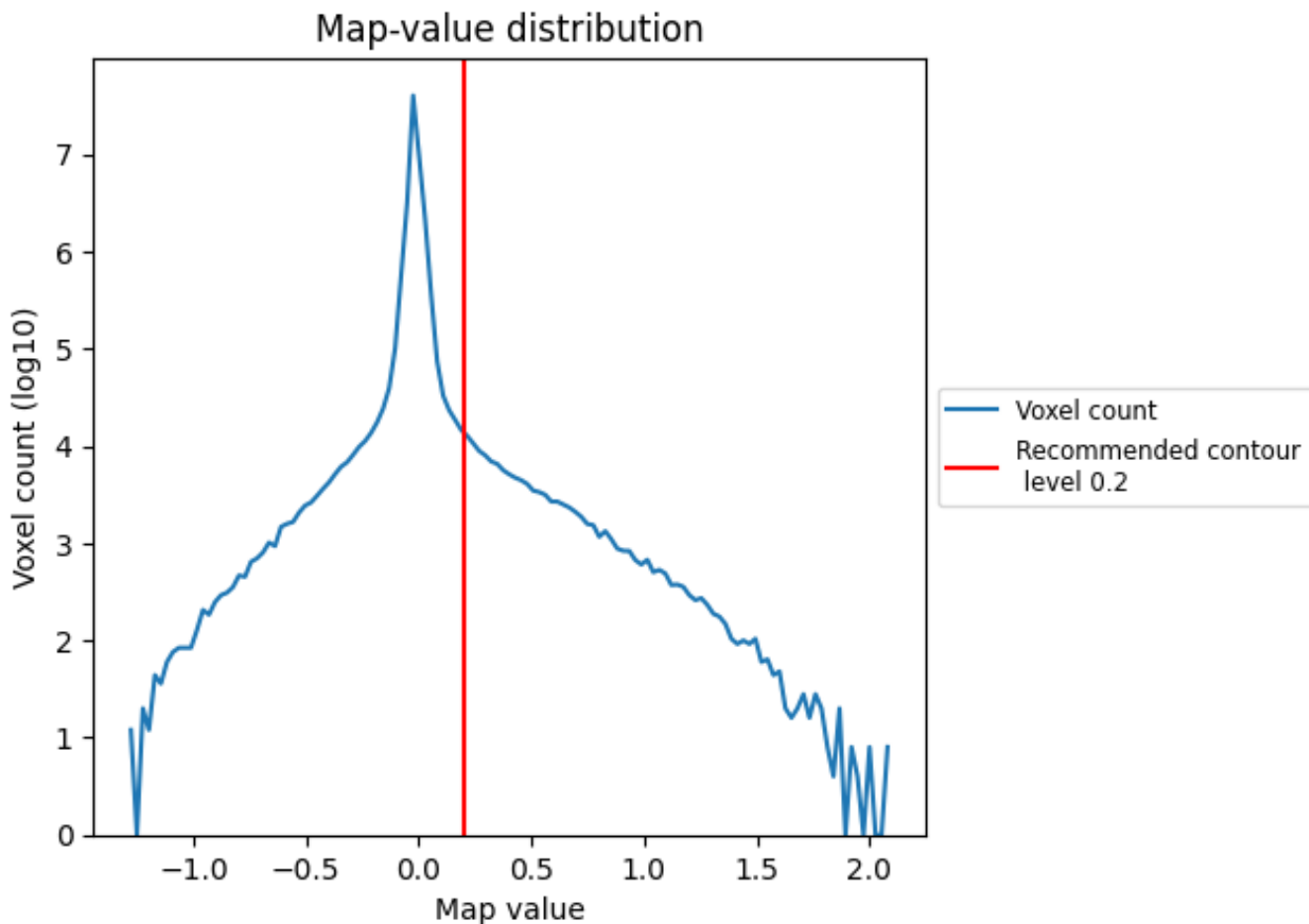
6.6 Mask visualisation [i](#)

This section was not generated. No masks/segmentation were deposited.

7 Map analysis [i](#)

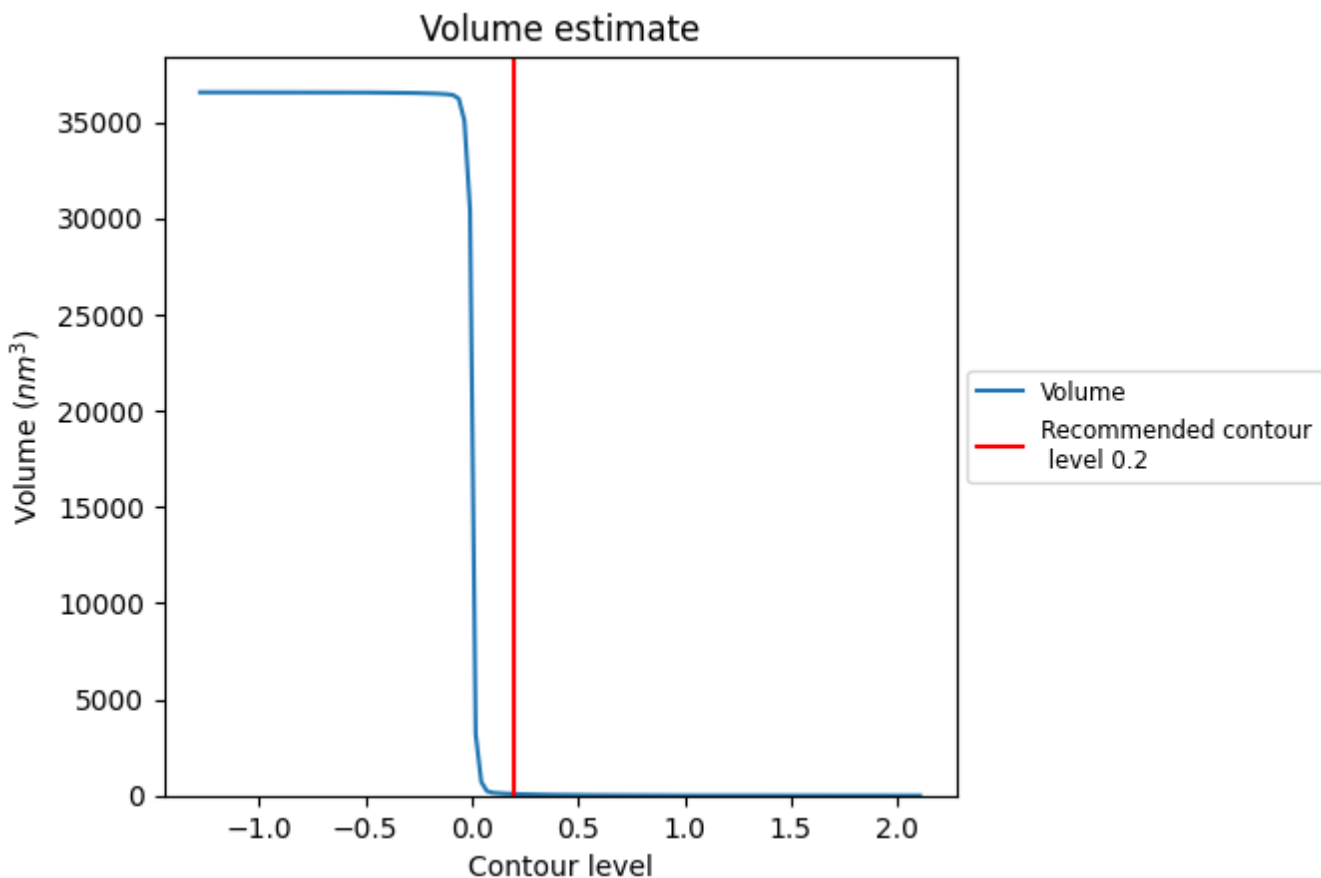
This section contains the results of statistical analysis of the map.

7.1 Map-value distribution [i](#)



The map-value distribution is plotted in 128 intervals along the x-axis. The y-axis is logarithmic. A spike in this graph at zero usually indicates that the volume has been masked.

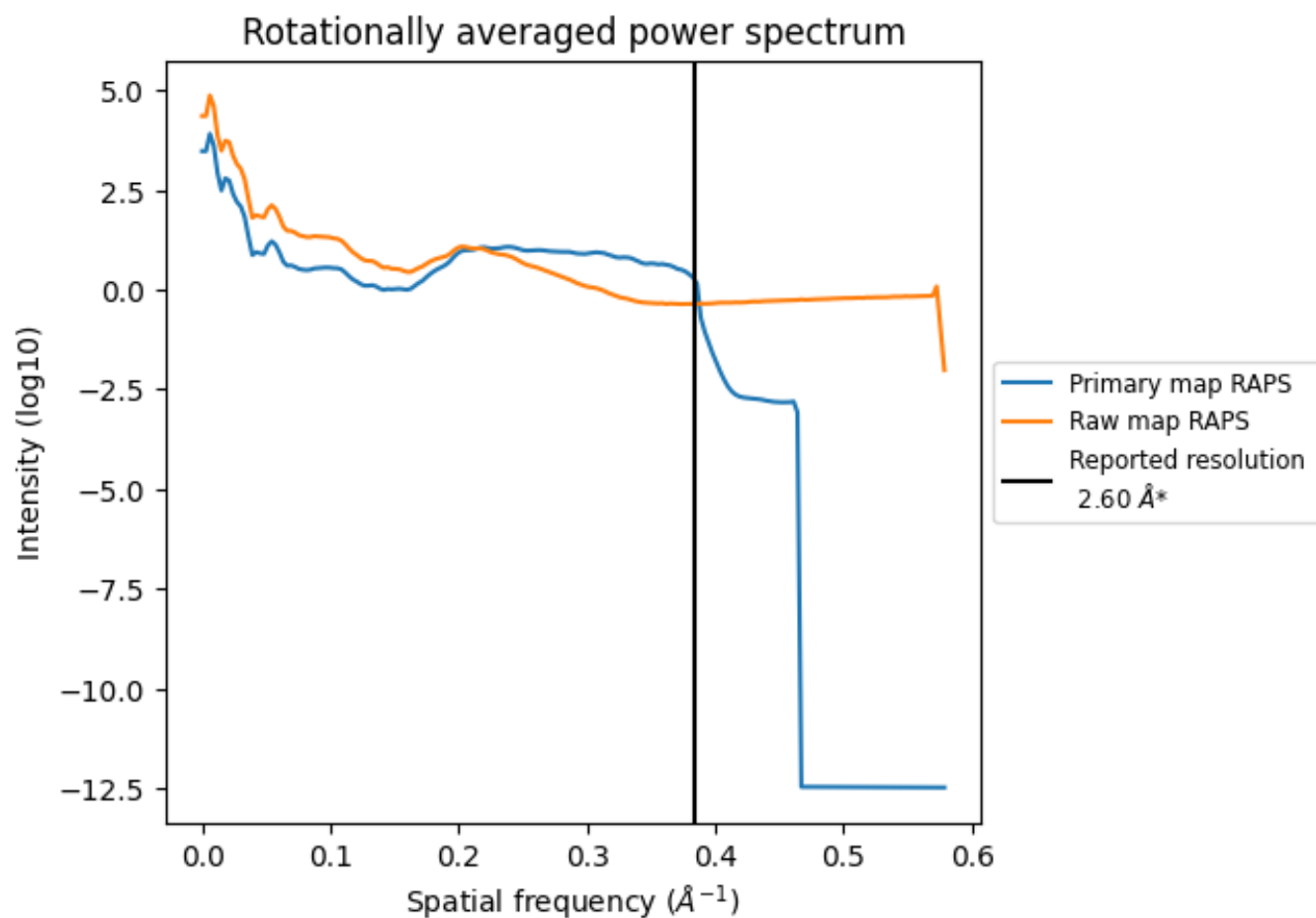
7.2 Volume estimate [i](#)



The volume at the recommended contour level is 82 nm³; this corresponds to an approximate mass of 74 kDa.

The volume estimate graph shows how the enclosed volume varies with the contour level. The recommended contour level is shown as a vertical line and the intersection between the line and the curve gives the volume of the enclosed surface at the given level.

7.3 Rotationally averaged power spectrum [i](#)

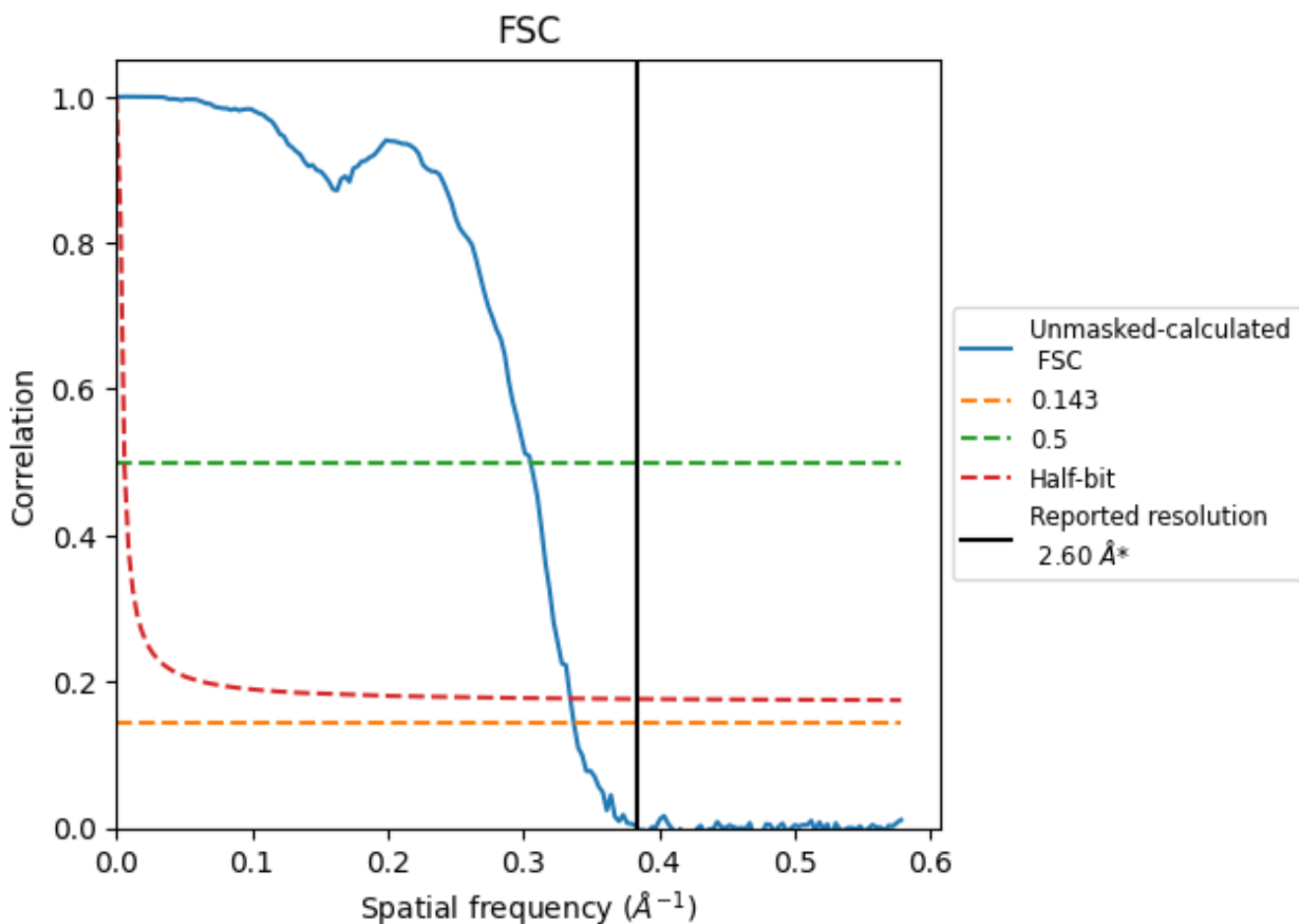


*Reported resolution corresponds to spatial frequency of 0.385 Å⁻¹

8 Fourier-Shell correlation [\(i\)](#)

Fourier-Shell Correlation (FSC) is the most commonly used method to estimate the resolution of single-particle and subtomogram-averaged maps. The shape of the curve depends on the imposed symmetry, mask and whether or not the two 3D reconstructions used were processed from a common reference. The reported resolution is shown as a black line. A curve is displayed for the half-bit criterion in addition to lines showing the 0.143 gold standard cut-off and 0.5 cut-off.

8.1 FSC [\(i\)](#)



*Reported resolution corresponds to spatial frequency of 0.385 Å⁻¹

8.2 Resolution estimates [i](#)

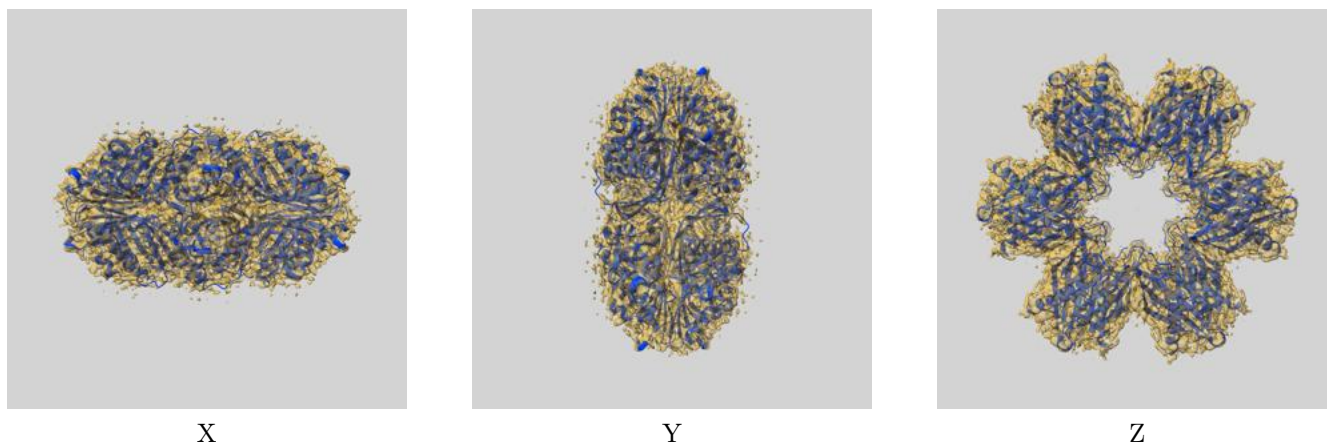
Resolution estimate (Å)	Estimation criterion (FSC cut-off)		
	0.143	0.5	Half-bit
Reported by author	2.60	-	-
Author-provided FSC curve	-	-	-
Unmasked-calculated*	2.96	3.28	2.99

*Resolution estimate based on FSC curve calculated by comparison of deposited half-maps. The value from deposited half-maps intersecting FSC 0.143 CUT-OFF 2.96 differs from the reported value 2.6 by more than 10 %

9 Map-model fit [i](#)

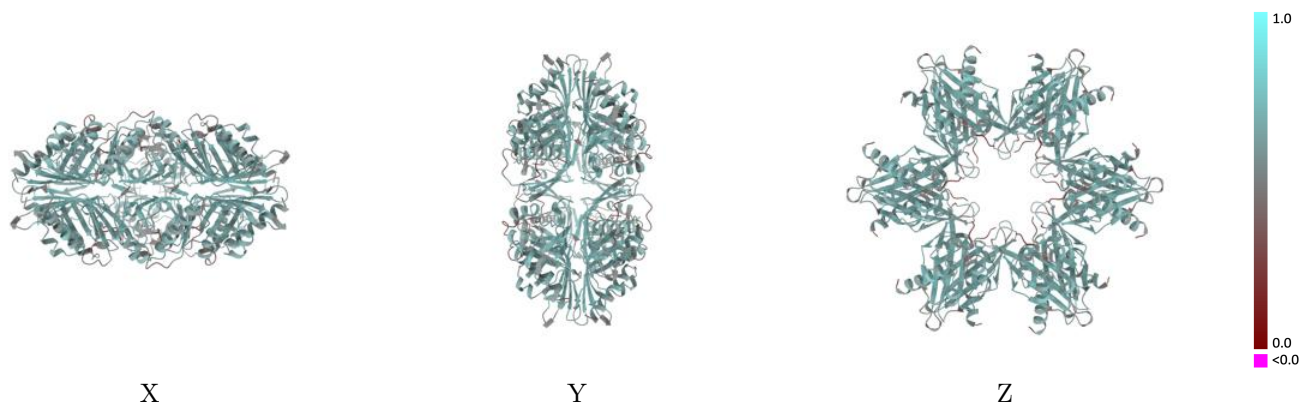
This section contains information regarding the fit between EMDB map EMD-40957 and PDB model 8T18. Per-residue inclusion information can be found in section 3 on page 19.

9.1 Map-model overlay [i](#)



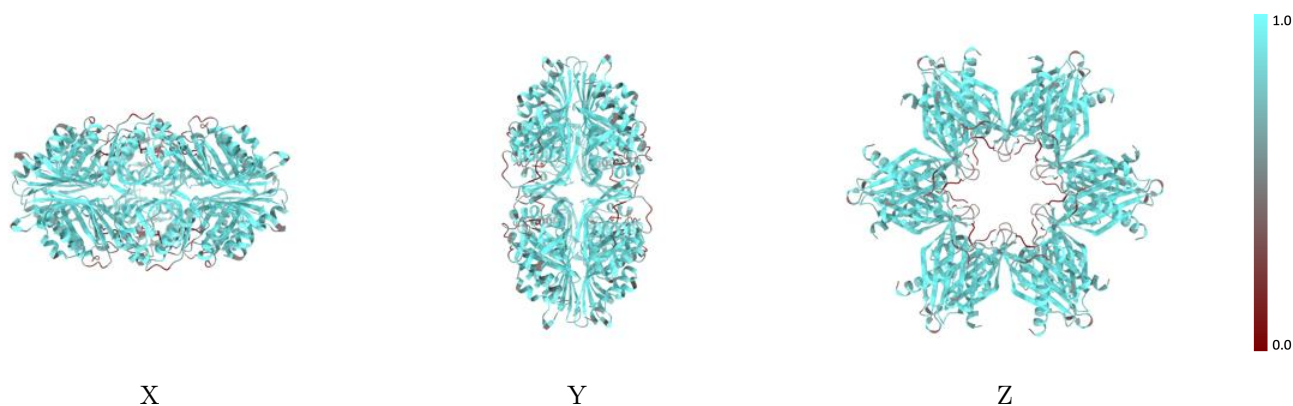
The images above show the 3D surface view of the map at the recommended contour level 0.2 at 50% transparency in yellow overlaid with a ribbon representation of the model coloured in blue. These images allow for the visual assessment of the quality of fit between the atomic model and the map.

9.2 Q-score mapped to coordinate model [i](#)



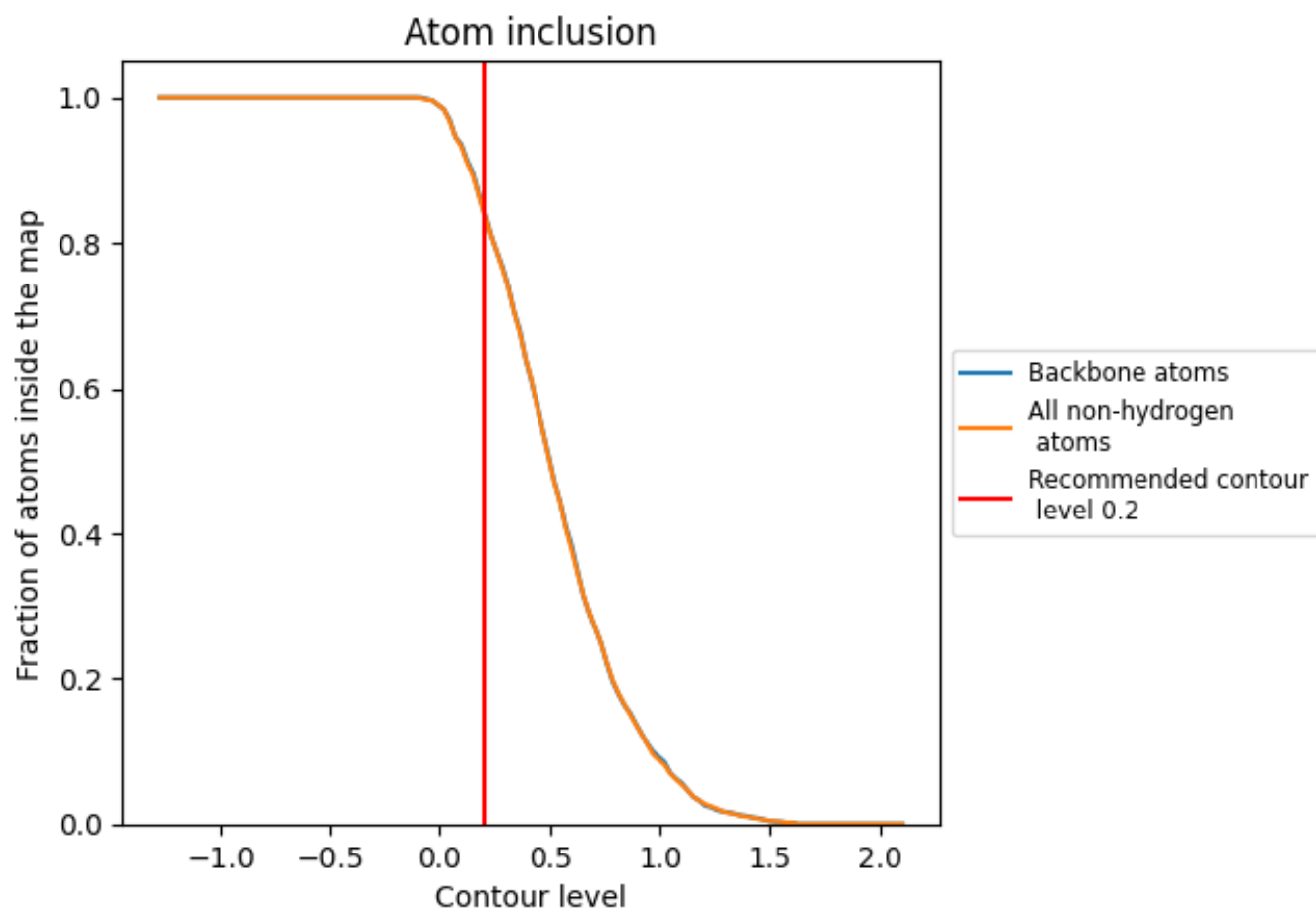
The images above show the model with each residue coloured according to its Q-score. This shows their resolvability in the map with higher Q-score values reflecting better resolvability. Please note: Q-score is calculating the resolvability of atoms, and thus high values are only expected at resolutions at which atoms can be resolved. Low Q-score values may therefore be expected for many entries.

9.3 Atom inclusion mapped to coordinate model [i](#)



The images above show the model with each residue coloured according to its atom inclusion. This shows to what extent they are inside the map at the recommended contour level (0.2).

























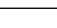
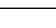
9.4 Atom inclusion [i](#)



At the recommended contour level, 84% of all backbone atoms, 84% of all non-hydrogen atoms, are inside the map.

9.5 Map-model fit summary

The table lists the average atom inclusion at the recommended contour level (0.2) and Q-score for the entire model and for each chain.

Chain	Atom inclusion	Q-score
All	 0.8420	 0.6000
A	 0.8530	 0.6000
B	 0.8450	 0.5980
C	 0.8490	 0.6010
D	 0.8500	 0.6010
E	 0.8470	 0.6000
F	 0.8480	 0.6020
G	 0.8540	 0.6010
H	 0.8470	 0.6000
I	 0.8490	 0.5990
J	 0.8520	 0.6010
K	 0.8460	 0.5990
L	 0.8480	 0.6000

