



Full wwPDB X-ray Structure Validation Report ⓘ

Jan 15, 2024 – 09:49 pm GMT

PDB ID : 6T2Q
Title : Prominent members of the human gut microbiota express endo-acting O-glycanases to initiate mucin breakdown
Authors : Crouch, L.I.; Liberato, M.V.; Ubranowicz, P.A.; Basle, A.; Lamb, C.A.; Cooke, K.; Doona, M.; Needham, S.; Brady, R.R.; Berrington, J.E.; Madubic, K.; Chater, P.; Zhang, F.; Linhardt, R.J.; Spence, D.I.R.; Bolam, D.N.
Deposited on : 2019-10-09
Resolution : 2.00 Å(reported)

This is a Full wwPDB X-ray Structure Validation Report for a publicly released PDB entry.

We welcome your comments at validation@mail.wwpdb.org

A user guide is available at

<https://www.wwpdb.org/validation/2017/XrayValidationReportHelp>

with specific help available everywhere you see the ⓘ symbol.

The types of validation reports are described at

<http://www.wwpdb.org/validation/2017/FAQs#types>.

The following versions of software and data (see [references ⓘ](#)) were used in the production of this report:

MolProbity : 4.02b-467
Mogul : 1.8.4, CSD as541be (2020)
Xtriage (Phenix) : 1.13
EDS : 2.36
Percentile statistics : 20191225.v01 (using entries in the PDB archive December 25th 2019)
Refmac : 5.8.0158
CCP4 : 7.0.044 (Gargrove)
Ideal geometry (proteins) : Engh & Huber (2001)
Ideal geometry (DNA, RNA) : Parkinson et al. (1996)
Validation Pipeline (wwPDB-VP) : 2.36

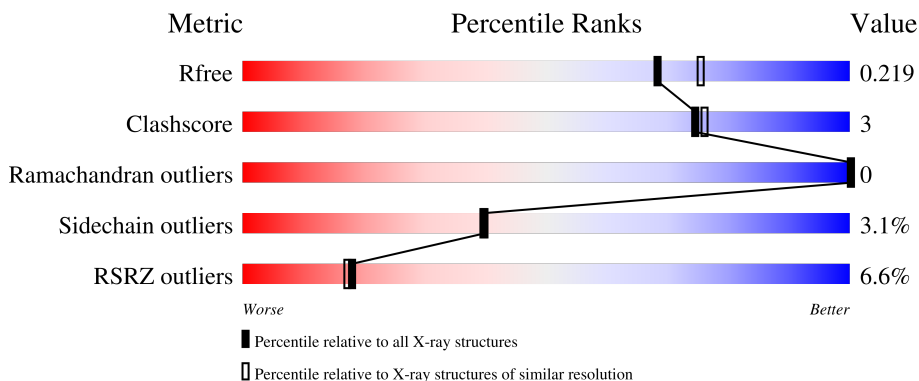
1 Overall quality at a glance i

The following experimental techniques were used to determine the structure:

X-RAY DIFFRACTION

The reported resolution of this entry is 2.00 Å.

Percentile scores (ranging between 0-100) for global validation metrics of the entry are shown in the following graphic. The table shows the number of entries on which the scores are based.



Metric	Whole archive (#Entries)	Similar resolution (#Entries, resolution range(Å))
R_{free}	130704	8085 (2.00-2.00)
Clashscore	141614	9178 (2.00-2.00)
Ramachandran outliers	138981	9054 (2.00-2.00)
Sidechain outliers	138945	9053 (2.00-2.00)
RSRZ outliers	127900	7900 (2.00-2.00)

The table below summarises the geometric issues observed across the polymeric chains and their fit to the electron density. The red, orange, yellow and green segments of the lower bar indicate the fraction of residues that contain outliers for ≥ 3 , 2, 1 and 0 types of geometric quality criteria respectively. A grey segment represents the fraction of residues that are not modelled. The numeric value for each fraction is indicated below the corresponding segment, with a dot representing fractions $\leq 5\%$. The upper red bar (where present) indicates the fraction of residues that have poor fit to the electron density. The numeric value is given above the bar.

Mol	Chain	Length	Quality of chain
1	AAA	282	<div style="display: flex; align-items: center;"> <div style="width: 5%; height: 10px; background-color: red; margin-right: 5px;"></div> <div style="width: 77%; height: 10px; background-color: green; margin-right: 5px;"></div> <div style="width: 9%; height: 10px; background-color: yellow; margin-right: 5px;"></div> <div style="width: 14%; height: 10px; background-color: grey;"></div> </div>
1	BBB	282	<div style="display: flex; align-items: center;"> <div style="width: 6%; height: 10px; background-color: red; margin-right: 5px;"></div> <div style="width: 77%; height: 10px; background-color: green; margin-right: 5px;"></div> <div style="width: 8%; height: 10px; background-color: yellow; margin-right: 5px;"></div> <div style="width: 15%; height: 10px; background-color: grey;"></div> </div>
2	A	3	<div style="display: flex; align-items: center;"> <div style="width: 67%; height: 10px; background-color: yellow; margin-right: 5px;"></div> <div style="width: 33%; height: 10px; background-color: orange;"></div> </div>
2	B	3	<div style="display: flex; align-items: center;"> <div style="width: 67%; height: 10px; background-color: yellow; margin-right: 5px;"></div> <div style="width: 33%; height: 10px; background-color: orange;"></div> </div>

The following table lists non-polymeric compounds, carbohydrate monomers and non-standard residues in protein, DNA, RNA chains that are outliers for geometric or electron-density-fit criteria:

Mol	Type	Chain	Res	Chirality	Geometry	Clashes	Electron density
2	GAL	A	3	-	-	-	X
2	GAL	B	1	-	-	-	X
2	NAG	B	2	-	-	-	X
2	GAL	B	3	-	-	-	X

2 Entry composition

There are 6 unique types of molecules in this entry. The entry contains 4114 atoms, of which 0 are hydrogens and 0 are deuteriums.

In the tables below, the ZeroOcc column contains the number of atoms modelled with zero occupancy, the AltConf column contains the number of residues with at least one atom in alternate conformation and the Trace column contains the number of residues modelled with at most 2 atoms.

- Molecule 1 is a protein called Glycosyl hydrolase family 16.

Mol	Chain	Residues	Atoms					ZeroOcc	AltConf	Trace
			Total	C	N	O	S			
1	AAA	242	1970	1271	325	364	10	0	1	0
1	BBB	241	1955	1262	323	360	10	0	0	0

There are 48 discrepancies between the modelled and reference sequences:

Chain	Residue	Modelled	Actual	Comment	Reference
AAA	-1	MET	-	initiating methionine	UNP A5ZIF0
AAA	0	GLY	-	expression tag	UNP A5ZIF0
AAA	1	SER	-	expression tag	UNP A5ZIF0
AAA	2	SER	-	expression tag	UNP A5ZIF0
AAA	3	HIS	-	expression tag	UNP A5ZIF0
AAA	4	HIS	-	expression tag	UNP A5ZIF0
AAA	5	HIS	-	expression tag	UNP A5ZIF0
AAA	6	HIS	-	expression tag	UNP A5ZIF0
AAA	7	HIS	-	expression tag	UNP A5ZIF0
AAA	8	HIS	-	expression tag	UNP A5ZIF0
AAA	9	SER	-	expression tag	UNP A5ZIF0
AAA	10	SER	-	expression tag	UNP A5ZIF0
AAA	11	GLY	-	expression tag	UNP A5ZIF0
AAA	12	LEU	-	expression tag	UNP A5ZIF0
AAA	13	VAL	-	expression tag	UNP A5ZIF0
AAA	14	PRO	-	expression tag	UNP A5ZIF0
AAA	15	ARG	-	expression tag	UNP A5ZIF0
AAA	16	GLY	-	expression tag	UNP A5ZIF0
AAA	17	SER	-	expression tag	UNP A5ZIF0
AAA	18	HIS	-	expression tag	UNP A5ZIF0
AAA	19	MET	-	expression tag	UNP A5ZIF0
AAA	20	ALA	-	expression tag	UNP A5ZIF0
AAA	21	SER	-	expression tag	UNP A5ZIF0
AAA	143	GLN	GLU	conflict	UNP A5ZIF0
BBB	-1	MET	-	initiating methionine	UNP A5ZIF0

Continued on next page...

Continued from previous page...

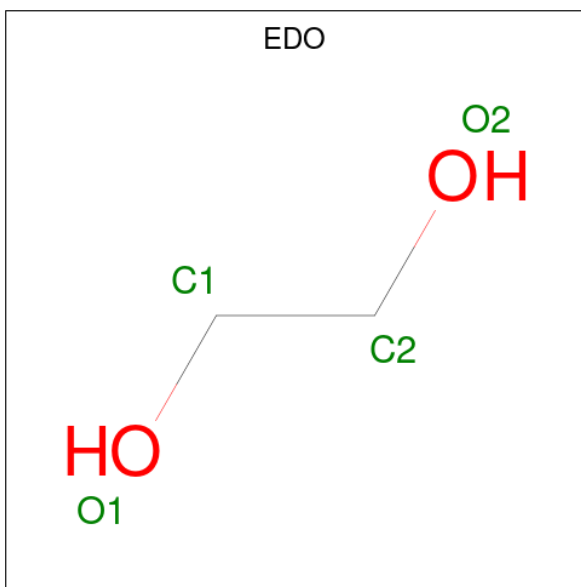
Chain	Residue	Modelled	Actual	Comment	Reference
BBB	0	GLY	-	expression tag	UNP A5ZIF0
BBB	1	SER	-	expression tag	UNP A5ZIF0
BBB	2	SER	-	expression tag	UNP A5ZIF0
BBB	3	HIS	-	expression tag	UNP A5ZIF0
BBB	4	HIS	-	expression tag	UNP A5ZIF0
BBB	5	HIS	-	expression tag	UNP A5ZIF0
BBB	6	HIS	-	expression tag	UNP A5ZIF0
BBB	7	HIS	-	expression tag	UNP A5ZIF0
BBB	8	HIS	-	expression tag	UNP A5ZIF0
BBB	9	SER	-	expression tag	UNP A5ZIF0
BBB	10	SER	-	expression tag	UNP A5ZIF0
BBB	11	GLY	-	expression tag	UNP A5ZIF0
BBB	12	LEU	-	expression tag	UNP A5ZIF0
BBB	13	VAL	-	expression tag	UNP A5ZIF0
BBB	14	PRO	-	expression tag	UNP A5ZIF0
BBB	15	ARG	-	expression tag	UNP A5ZIF0
BBB	16	GLY	-	expression tag	UNP A5ZIF0
BBB	17	SER	-	expression tag	UNP A5ZIF0
BBB	18	HIS	-	expression tag	UNP A5ZIF0
BBB	19	MET	-	expression tag	UNP A5ZIF0
BBB	20	ALA	-	expression tag	UNP A5ZIF0
BBB	21	SER	-	expression tag	UNP A5ZIF0
BBB	143	GLN	GLU	conflict	UNP A5ZIF0

- Molecule 2 is an oligosaccharide called beta-D-galactopyranose-(1-4)-2-acetamido-2-deoxy-beta-D-glucopyranose-(1-3)-beta-D-galactopyranose.



Mol	Chain	Residues	Atoms				ZeroOcc	AltConf	Trace
2	A	3	Total	C	N	O	0	0	0
			37	20	1	16			
2	B	3	Total	C	N	O	0	0	0
			37	20	1	16			

- Molecule 3 is 1,2-ETHANEDIOL (three-letter code: EDO) (formula: C₂H₆O₂).



Mol	Chain	Residues	Atoms	ZeroOcc	AltConf
3	AAA	1	Total C O 4 2 2	0	0
3	BBB	1	Total C O 4 2 2	0	0

- Molecule 4 is CALCIUM ION (three-letter code: CA) (formula: Ca).

Mol	Chain	Residues	Atoms	ZeroOcc	AltConf
4	AAA	1	Total Ca 1 1	0	0
4	BBB	1	Total Ca 1 1	0	0

- Molecule 5 is SODIUM ION (three-letter code: NA) (formula: Na).

Mol	Chain	Residues	Atoms	ZeroOcc	AltConf
5	AAA	2	Total Na 2 2	0	0
5	BBB	4	Total Na 4 4	0	0

- Molecule 6 is water.

Mol	Chain	Residues	Atoms	ZeroOcc	AltConf
6	AAA	41	Total O 41 41	0	0

Continued on next page...


Continued from previous page...

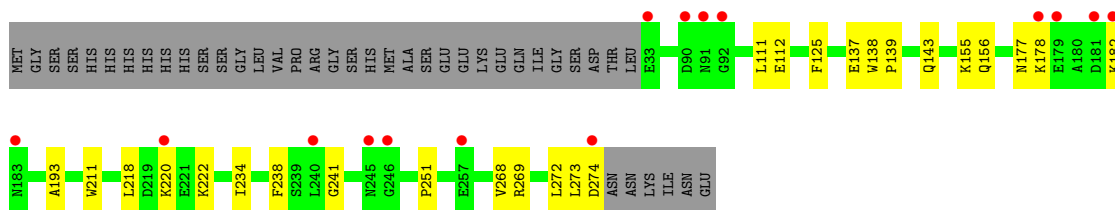
Mol	Chain	Residues	Atoms		ZeroOcc	AltConf
6	BBB	58	Total	O	0	0
			58	58		

3 Residue-property plots [i](#)


These plots are drawn for all protein, RNA, DNA and oligosaccharide chains in the entry. The first graphic for a chain summarises the proportions of the various outlier classes displayed in the second graphic. The second graphic shows the sequence view annotated by issues in geometry and electron density. Residues are color-coded according to the number of geometric quality criteria for which they contain at least one outlier: green = 0, yellow = 1, orange = 2 and red = 3 or more. A red dot above a residue indicates a poor fit to the electron density ($RSRZ > 2$). Stretches of 2 or more consecutive residues without any outlier are shown as a green connector. Residues present in the sample, but not in the model, are shown in grey.

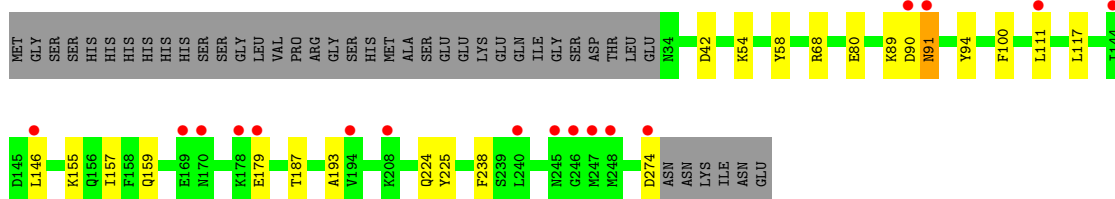
- Molecule 1: Glycosyl hydrolase family 16

Chain AAA: 



- Molecule 1: Glycosyl hydrolase family 16

Chain BBB: 



- Molecule 2: beta-D-galactopyranose-(1-4)-2-acetamido-2-deoxy-beta-D-glucopyranose-(1-3)-beta-D-galactopyranose

Chain A: 



- Molecule 2: beta-D-galactopyranose-(1-4)-2-acetamido-2-deoxy-beta-D-glucopyranose-(1-3)-beta-D-galactopyranose

Chain B: 



4 Data and refinement statistics i

Property	Value	Source
Space group	P 41	Depositor
Cell constants a, b, c, α , β , γ	82.92Å 82.92Å 121.31Å 90.00° 90.00° 90.00°	Depositor
Resolution (Å)	19.99 – 2.00 19.99 – 2.00	Depositor EDS
% Data completeness (in resolution range)	99.9 (19.99-2.00) 100.0 (19.99-2.00)	Depositor EDS
R_{merge}	(Not available)	Depositor
R_{sym}	(Not available)	Depositor
$\langle I/\sigma(I) \rangle$ ¹	1.50 (at 2.01Å)	Xtrriage
Refinement program	REFMAC 5.8.0257	Depositor
R, R_{free}	0.187 , 0.211 0.195 , 0.219	Depositor DCC
R_{free} test set	2638 reflections (4.78%)	wwPDB-VP
Wilson B-factor (Å ²)	40.3	Xtrriage
Anisotropy	0.288	Xtrriage
Bulk solvent k_{sol} (e/Å ³), B_{sol} (Å ²)	0.37 , 40.8	EDS
L-test for twinning ²	$\langle L \rangle = 0.49$, $\langle L^2 \rangle = 0.33$	Xtrriage
Estimated twinning fraction	0.037 for h,-k,-l	Xtrriage
F_o, F_c correlation	0.97	EDS
Total number of atoms	4114	wwPDB-VP
Average B, all atoms (Å ²)	47.0	wwPDB-VP

Xtrriage's analysis on translational NCS is as follows: *The largest off-origin peak in the Patterson function is 3.46% of the height of the origin peak. No significant pseudotranslation is detected.*

¹Intensities estimated from amplitudes.

²Theoretical values of $\langle |L| \rangle$, $\langle L^2 \rangle$ for acentric reflections are 0.5, 0.333 respectively for untwinned datasets, and 0.375, 0.2 for perfectly twinned datasets.

5 Model quality [i](#)

5.1 Standard geometry [i](#)

Bond lengths and bond angles in the following residue types are not validated in this section: NAG, EDO, NA, CA, GAL

The Z score for a bond length (or angle) is the number of standard deviations the observed value is removed from the expected value. A bond length (or angle) with $|Z| > 5$ is considered an outlier worth inspection. RMSZ is the root-mean-square of all Z scores of the bond lengths (or angles).

Mol	Chain	Bond lengths		Bond angles	
		RMSZ	# Z >5	RMSZ	# Z >5
1	AAA	0.71	0/2029	0.85	0/2752
1	BBB	0.72	0/2011	0.86	0/2728
All	All	0.71	0/4040	0.86	0/5480

Chiral center outliers are detected by calculating the chiral volume of a chiral center and verifying if the center is modelled as a planar moiety or with the opposite hand. A planarity outlier is detected by checking planarity of atoms in a peptide group, atoms in a mainchain group or atoms of a sidechain that are expected to be planar.

Mol	Chain	#Chirality outliers	#Planarity outliers
1	AAA	0	1

There are no bond length outliers.

There are no bond angle outliers.

There are no chirality outliers.

All (1) planarity outliers are listed below:

Mol	Chain	Res	Type	Group
1	AAA	273	LEU	Peptide

5.2 Too-close contacts [i](#)

In the following table, the Non-H and H(model) columns list the number of non-hydrogen atoms and hydrogen atoms in the chain respectively. The H(added) column lists the number of hydrogen atoms added and optimized by MolProbity. The Clashes column lists the number of clashes within the asymmetric unit, whereas Symm-Clashes lists symmetry-related clashes.

Mol	Chain	Non-H	H(model)	H(added)	Clashes	Symm-Clashes
1	AAA	1970	0	1891	15	0
1	BBB	1955	0	1877	9	0
2	A	37	0	33	2	0
2	B	37	0	32	1	0
3	AAA	4	0	6	0	0
3	BBB	4	0	6	0	0
4	AAA	1	0	0	0	0
4	BBB	1	0	0	0	0
5	AAA	2	0	0	0	0
5	BBB	4	0	0	0	0
6	AAA	41	0	0	1	0
6	BBB	58	0	0	0	0
All	All	4114	0	3845	25	0

The all-atom clashscore is defined as the number of clashes found per 1000 atoms (including hydrogen atoms). The all-atom clashscore for this structure is 3.

All (25) close contacts within the same asymmetric unit are listed below, sorted by their clash magnitude.

Atom-1	Atom-2	Interatomic distance (Å)	Clash overlap (Å)
1:AAA:112:GLU:OE1	1:AAA:269:ARG:NH2	2.26	0.69
1:BBB:90:ASP:OD1	1:BBB:91:ASN:ND2	2.33	0.61
1:AAA:156[A]:GLN:HG2	1:AAA:182:LYS:HA	1.84	0.59
1:AAA:155:LYS:C	1:AAA:156[A]:GLN:HG3	2.24	0.58
1:BBB:54:LYS:HD2	1:BBB:100:PHE:CZ	2.39	0.57
1:AAA:177:ASN:HB2	1:AAA:211:TRP:CD1	2.42	0.54
1:AAA:155:LYS:O	1:AAA:156[A]:GLN:HG3	2.09	0.52
1:AAA:156[A]:GLN:NE2	6:AAA:401:HOH:O	2.41	0.50
1:AAA:111:LEU:O	1:AAA:193:ALA:HA	2.11	0.49
1:BBB:89:LYS:HE3	1:BBB:94:TYR:CZ	2.48	0.49
1:AAA:156[A]:GLN:OE1	1:AAA:182:LYS:CD	2.62	0.48
1:AAA:143:GLN:HE22	2:A:1:GAL:C1	2.27	0.48
1:BBB:224:GLN:OE1	1:BBB:225:TYR:HB2	2.19	0.43
2:B:1:GAL:HO4	2:B:1:GAL:HO1	1.64	0.43
1:AAA:234:ILE:HD13	1:AAA:268:VAL:HG11	2.01	0.42
1:BBB:58:TYR:CD1	1:BBB:68:ARG:HB2	2.55	0.42
1:BBB:111:LEU:O	1:BBB:193:ALA:HA	2.20	0.42
1:AAA:125:PHE:CG	1:AAA:251:PRO:HG3	2.55	0.41
1:AAA:241:GLY:HA3	1:AAA:251:PRO:HG2	2.01	0.41
1:AAA:143:GLN:HE22	2:A:1:GAL:C2	2.33	0.41
1:AAA:218:LEU:HB3	1:AAA:222:LYS:HD2	2.03	0.41
1:BBB:157:ILE:C	1:BBB:157:ILE:HD12	2.41	0.41

Continued on next page...

Continued from previous page...

Atom-1	Atom-2	Interatomic distance (Å)	Clash overlap (Å)
1:BBB:146:LEU:O	1:BBB:159:GLN:HG2	2.21	0.40
1:BBB:117:LEU:O	1:BBB:187:THR:HA	2.20	0.40
1:AAA:138:TRP:HA	1:AAA:139:PRO:HA	1.88	0.40

There are no symmetry-related clashes.

5.3 Torsion angles [i](#)

5.3.1 Protein backbone [i](#)

In the following table, the Percentiles column shows the percent Ramachandran outliers of the chain as a percentile score with respect to all X-ray entries followed by that with respect to entries of similar resolution.

The Analysed column shows the number of residues for which the backbone conformation was analysed, and the total number of residues.

Mol	Chain	Analysed	Favoured	Allowed	Outliers	Percentiles	
1	AAA	241/282 (86%)	236 (98%)	5 (2%)	0	100	100
1	BBB	239/282 (85%)	235 (98%)	4 (2%)	0	100	100
All	All	480/564 (85%)	471 (98%)	9 (2%)	0	100	100

There are no Ramachandran outliers to report.

5.3.2 Protein sidechains [i](#)

In the following table, the Percentiles column shows the percent sidechain outliers of the chain as a percentile score with respect to all X-ray entries followed by that with respect to entries of similar resolution.

The Analysed column shows the number of residues for which the sidechain conformation was analysed, and the total number of residues.

Mol	Chain	Analysed	Rotameric	Outliers	Percentiles	
1	AAA	209/243 (86%)	203 (97%)	6 (3%)	42	43
1	BBB	207/243 (85%)	200 (97%)	7 (3%)	37	36
All	All	416/486 (86%)	403 (97%)	13 (3%)	40	40

All (13) residues with a non-rotameric sidechain are listed below:

Mol	Chain	Res	Type
1	AAA	137	GLU
1	AAA	178	LYS
1	AAA	220	LYS
1	AAA	238	PHE
1	AAA	272	LEU
1	AAA	274	ASP
1	BBB	42	ASP
1	BBB	80	GLU
1	BBB	91	ASN
1	BBB	155	LYS
1	BBB	179	GLU
1	BBB	238	PHE
1	BBB	274	ASP

Sometimes sidechains can be flipped to improve hydrogen bonding and reduce clashes. There are no such sidechains identified.

5.3.3 RNA [i](#)

There are no RNA molecules in this entry.

5.4 Non-standard residues in protein, DNA, RNA chains [i](#)

There are no non-standard protein/DNA/RNA residues in this entry.

5.5 Carbohydrates [i](#)

6 monosaccharides are modelled in this entry.

In the following table, the Counts columns list the number of bonds (or angles) for which Mogul statistics could be retrieved, the number of bonds (or angles) that are observed in the model and the number of bonds (or angles) that are defined in the Chemical Component Dictionary. The Link column lists molecule types, if any, to which the group is linked. The Z score for a bond length (or angle) is the number of standard deviations the observed value is removed from the expected value. A bond length (or angle) with $|Z| > 2$ is considered an outlier worth inspection. RMSZ is the root-mean-square of all Z scores of the bond lengths (or angles).

Mol	Type	Chain	Res	Link	Bond lengths			Bond angles		
					Counts	RMSZ	$\# Z > 2$	Counts	RMSZ	$\# Z > 2$
2	GAL	A	1	2	12,12,12	1.32	2 (16%)	17,17,17	2.69	7 (41%)
2	NAG	A	2	2	14,14,15	0.71	0	17,19,21	0.99	1 (5%)
2	GAL	A	3	2	11,11,12	0.75	0	15,15,17	1.49	2 (13%)

Mol	Type	Chain	Res	Link	Bond lengths			Bond angles		
					Counts	RMSZ	# Z > 2	Counts	RMSZ	# Z > 2
2	GAL	B	1	2	12,12,12	1.95	4 (33%)	17,17,17	6.25	7 (41%)
2	NAG	B	2	2	14,14,15	0.63	0	17,19,21	2.78	3 (17%)
2	GAL	B	3	2	11,11,12	0.83	0	15,15,17	1.68	3 (20%)

In the following table, the Chirals column lists the number of chiral outliers, the number of chiral centers analysed, the number of these observed in the model and the number defined in the Chemical Component Dictionary. Similar counts are reported in the Torsion and Rings columns. '-' means no outliers of that kind were identified.

Mol	Type	Chain	Res	Link	Chirals	Torsions	Rings
2	GAL	A	1	2	-	0/2/22/22	0/1/1/1
2	NAG	A	2	2	-	0/6/23/26	0/1/1/1
2	GAL	A	3	2	-	0/2/19/22	0/1/1/1
2	GAL	B	1	2	-	1/2/22/22	0/1/1/1
2	NAG	B	2	2	-	1/6/23/26	0/1/1/1
2	GAL	B	3	2	-	1/2/19/22	0/1/1/1

All (6) bond length outliers are listed below:

Mol	Chain	Res	Type	Atoms	Z	Observed(Å)	Ideal(Å)
2	B	1	GAL	O4-C4	3.72	1.51	1.43
2	B	1	GAL	O5-C1	3.54	1.51	1.42
2	B	1	GAL	O1-C1	3.19	1.49	1.39
2	A	1	GAL	O5-C1	3.05	1.50	1.42
2	B	1	GAL	C1-C2	2.39	1.58	1.52
2	A	1	GAL	O1-C1	2.01	1.46	1.39

All (23) bond angle outliers are listed below:

Mol	Chain	Res	Type	Atoms	Z	Observed(°)	Ideal(°)
2	B	1	GAL	O3-C3-C4	21.42	159.87	110.35
2	B	1	GAL	O3-C3-C2	-10.46	86.17	110.35
2	B	2	NAG	O4-C4-C3	-8.03	91.79	110.35
2	B	2	NAG	O4-C4-C5	6.52	125.50	109.30
2	A	1	GAL	O3-C3-C2	-6.22	95.96	110.35
2	B	1	GAL	O4-C4-C5	5.19	122.18	109.30
2	A	1	GAL	O3-C3-C4	4.77	121.38	110.35
2	B	1	GAL	O5-C1-C2	4.73	118.73	110.28
2	A	1	GAL	C1-O5-C5	4.11	121.42	113.66
2	B	1	GAL	O2-C2-C1	3.91	118.22	109.16
2	B	3	GAL	C1-C2-C3	-3.88	104.89	109.67

Continued on next page...

Continued from previous page...

Mol	Chain	Res	Type	Atoms	Z	Observed(°)	Ideal(°)
2	A	1	GAL	O5-C1-C2	3.84	117.14	110.28
2	A	3	GAL	O5-C5-C6	3.55	112.77	107.20
2	A	3	GAL	C3-C4-C5	3.02	115.63	110.24
2	B	3	GAL	O5-C1-C2	-3.02	106.11	110.77
2	A	1	GAL	O2-C2-C1	2.92	115.94	109.16
2	B	1	GAL	C3-C4-C5	-2.92	105.03	110.24
2	A	2	NAG	O4-C4-C5	-2.58	102.88	109.30
2	B	1	GAL	C4-C3-C2	-2.49	106.48	110.82
2	A	1	GAL	O2-C2-C3	-2.39	104.81	110.35
2	B	2	NAG	O5-C5-C6	2.22	110.69	107.20
2	A	1	GAL	O4-C4-C5	2.13	114.59	109.30
2	B	3	GAL	O5-C5-C6	2.05	110.42	107.20

There are no chirality outliers.

All (3) torsion outliers are listed below:

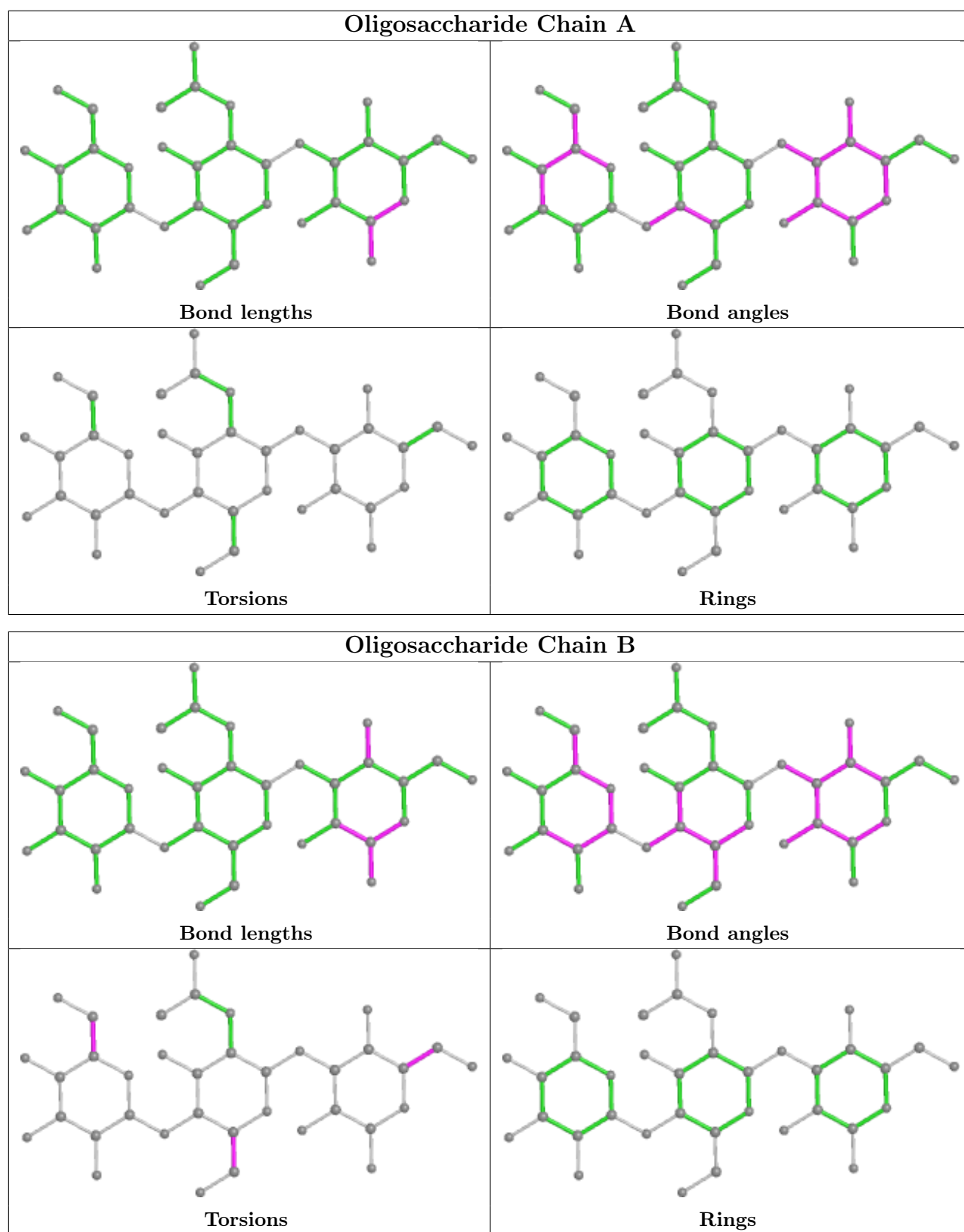
Mol	Chain	Res	Type	Atoms
2	B	3	GAL	O5-C5-C6-O6
2	B	2	NAG	O5-C5-C6-O6
2	B	1	GAL	O5-C5-C6-O6

There are no ring outliers.

2 monomers are involved in 3 short contacts:

Mol	Chain	Res	Type	Clashes	Symm-Clashes
2	B	1	GAL	1	0
2	A	1	GAL	2	0

The following is a two-dimensional graphical depiction of Mogul quality analysis of bond lengths, bond angles, torsion angles, and ring geometry for oligosaccharide.



5.6 Ligand geometry [i](#)

Of 10 ligands modelled in this entry, 8 are monoatomic - leaving 2 for Mogul analysis.

In the following table, the Counts columns list the number of bonds (or angles) for which Mogul statistics could be retrieved, the number of bonds (or angles) that are observed in the model and the number of bonds (or angles) that are defined in the Chemical Component Dictionary. The Link column lists molecule types, if any, to which the group is linked. The Z score for a bond length (or angle) is the number of standard deviations the observed value is removed from the expected value. A bond length (or angle) with $|Z| > 2$ is considered an outlier worth inspection. RMSZ is the root-mean-square of all Z scores of the bond lengths (or angles).

Mol	Type	Chain	Res	Link	Bond lengths			Bond angles		
					Counts	RMSZ	$\# Z > 2$	Counts	RMSZ	$\# Z > 2$
3	EDO	BBB	304	-	3,3,3	0.20	0	2,2,2	0.25	0
3	EDO	AAA	304	-	3,3,3	0.19	0	2,2,2	0.35	0

In the following table, the Chirals column lists the number of chiral outliers, the number of chiral centers analysed, the number of these observed in the model and the number defined in the Chemical Component Dictionary. Similar counts are reported in the Torsion and Rings columns. '-' means no outliers of that kind were identified.

Mol	Type	Chain	Res	Link	Chirals	Torsions	Rings
3	EDO	BBB	304	-	-	0/1/1/1	-
3	EDO	AAA	304	-	-	0/1/1/1	-

There are no bond length outliers.

There are no bond angle outliers.

There are no chirality outliers.

There are no torsion outliers.

There are no ring outliers.

No monomer is involved in short contacts.

5.7 Other polymers [i](#)

There are no such residues in this entry.

5.8 Polymer linkage issues [i](#)

There are no chain breaks in this entry.

6 Fit of model and data

6.1 Protein, DNA and RNA chains

In the following table, the column labelled ‘#RSRZ> 2’ contains the number (and percentage) of RSRZ outliers, followed by percent RSRZ outliers for the chain as percentile scores relative to all X-ray entries and entries of similar resolution. The OWAB column contains the minimum, median, 95th percentile and maximum values of the occupancy-weighted average B-factor per residue. The column labelled ‘Q< 0.9’ lists the number of (and percentage) of residues with an average occupancy less than 0.9.

Mol	Chain	Analysed	<RSRZ>	#RSRZ>2	OWAB(Å ²)	Q<0.9
1	AAA	242/282 (85%)	0.13	15 (6%) 20 19	32, 46, 73, 88	0
1	BBB	241/282 (85%)	0.11	17 (7%) 16 15	29, 43, 67, 81	0
All	All	483/564 (85%)	0.12	32 (6%) 18 17	29, 44, 72, 88	0

All (32) RSRZ outliers are listed below:

Mol	Chain	Res	Type	RSRZ
1	AAA	91	ASN	5.4
1	BBB	274	ASP	5.2
1	AAA	179	GLU	4.8
1	AAA	178	LYS	4.5
1	BBB	91	ASN	4.4
1	BBB	247	MET	4.2
1	AAA	33	GLU	3.8
1	BBB	194	VAL	3.7
1	AAA	92	GLY	3.4
1	BBB	246	GLY	3.4
1	BBB	111	LEU	3.4
1	BBB	179	GLU	3.3
1	BBB	248	MET	3.3
1	BBB	178	LYS	3.3
1	AAA	182	LYS	3.2
1	AAA	183	ASN	3.0
1	BBB	240	LEU	2.9
1	BBB	169	GLU	2.8
1	AAA	181	ASP	2.8
1	AAA	220	LYS	2.7
1	BBB	144	ILE	2.6
1	BBB	90	ASP	2.5
1	BBB	170	ASN	2.4
1	AAA	246	GLY	2.3

Continued on next page...

Continued from previous page...

Mol	Chain	Res	Type	RSRZ
1	AAA	245	ASN	2.3
1	AAA	274	ASP	2.2
1	BBB	208	LYS	2.1
1	AAA	257	GLU	2.1
1	AAA	240	LEU	2.1
1	BBB	245	ASN	2.1
1	AAA	90	ASP	2.1
1	BBB	146	LEU	2.0

6.2 Non-standard residues in protein, DNA, RNA chains [i](#)

There are no non-standard protein/DNA/RNA residues in this entry.

6.3 Carbohydrates [i](#)

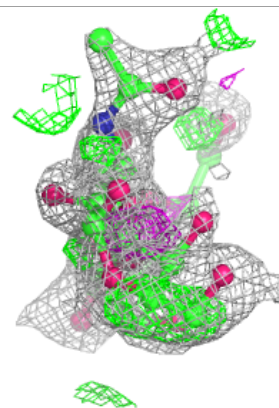
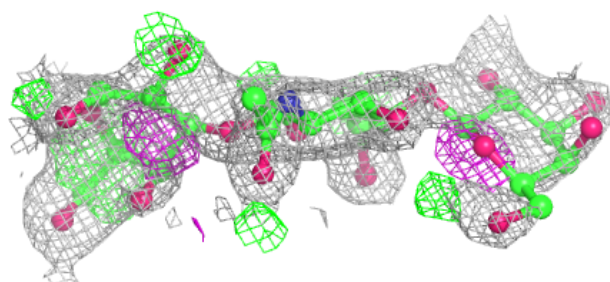
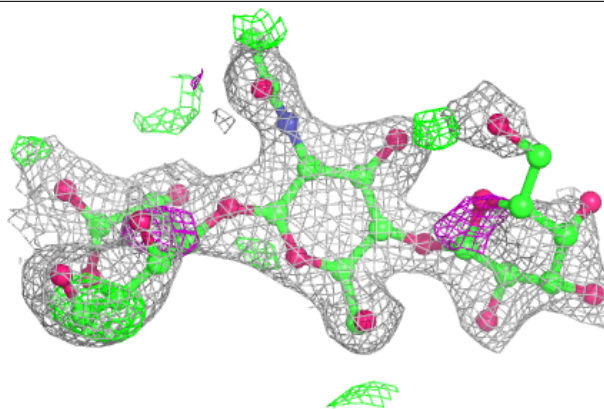
In the following table, the Atoms column lists the number of modelled atoms in the group and the number defined in the chemical component dictionary. The B-factors column lists the minimum, median, 95th percentile and maximum values of B factors of atoms in the group. The column labelled 'Q< 0.9' lists the number of atoms with occupancy less than 0.9.

Mol	Type	Chain	Res	Atoms	RSCC	RSR	B-factors(Å ²)	Q<0.9
2	GAL	B	3	11/12	0.32	0.68	71,78,80,82	11
2	GAL	A	3	11/12	0.53	0.44	55,61,63,65	11
2	NAG	B	2	14/15	0.55	0.40	58,67,72,77	14
2	GAL	B	1	12/12	0.55	0.42	32,44,49,60	12
2	GAL	A	1	12/12	0.71	0.26	32,43,46,48	12
2	NAG	A	2	14/15	0.85	0.18	43,49,51,56	14

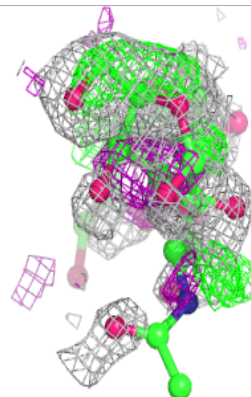
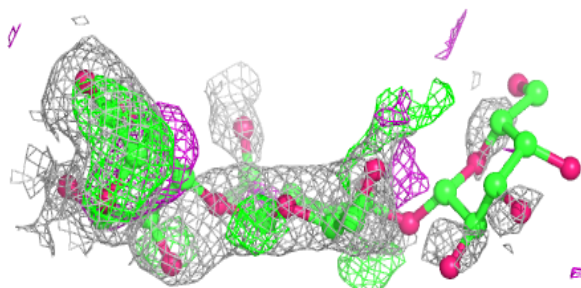
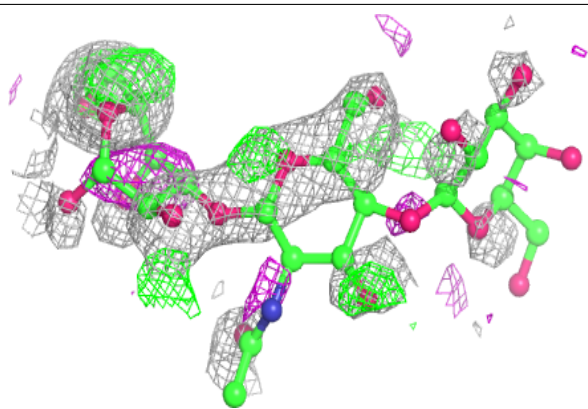
The following is a graphical depiction of the model fit to experimental electron density for oligosaccharide. Each fit is shown from different orientation to approximate a three-dimensional view.

Electron density around Chain A:

$2mF_o-DF_c$ (at 0.7 rmsd) in gray
 mF_o-DF_c (at 3 rmsd) in purple (negative)
and green (positive)

**Electron density around Chain B:**

$2mF_o-DF_c$ (at 0.7 rmsd) in gray
 mF_o-DF_c (at 3 rmsd) in purple (negative)
and green (positive)



6.4 Ligands [i](#)

In the following table, the Atoms column lists the number of modelled atoms in the group and the number defined in the chemical component dictionary. The B-factors column lists the minimum, median, 95th percentile and maximum values of B factors of atoms in the group. The column labelled 'Q<0.9' lists the number of atoms with occupancy less than 0.9.

Mol	Type	Chain	Res	Atoms	RSCC	RSR	B-factors(Å ²)	Q<0.9
3	EDO	AAA	304	4/4	0.96	0.23	36,40,40,41	0
3	EDO	BBB	304	4/4	0.96	0.32	37,38,39,40	0
5	NA	BBB	306	1/1	0.96	0.12	45,45,45,45	0
4	CA	BBB	305	1/1	0.97	0.07	52,52,52,52	0
4	CA	AAA	305	1/1	0.97	0.12	56,56,56,56	0
5	NA	BBB	307	1/1	0.97	0.14	46,46,46,46	0
5	NA	BBB	308	1/1	0.97	0.09	53,53,53,53	0
5	NA	BBB	309	1/1	0.97	0.08	41,41,41,41	0
5	NA	AAA	306	1/1	0.98	0.12	46,46,46,46	0
5	NA	AAA	307	1/1	0.98	0.12	46,46,46,46	0

6.5 Other polymers [i](#)

There are no such residues in this entry.