



Full wwPDB X-ray Structure Validation Report ⓘ

Feb 22, 2022 – 12:28 am GMT

PDB ID : 6T38
Title : Pseudomonas aeruginosa RmlA in complex with allosteric inhibitor
Authors : Alphey, M.S.; Xiao, G.; Westwood, J.N.
Deposited on : 2019-10-10
Resolution : 2.15 Å(reported)

This is a Full wwPDB X-ray Structure Validation Report for a publicly released PDB entry.

We welcome your comments at validation@mail.wwpdb.org

A user guide is available at

<https://www.wwpdb.org/validation/2017/XrayValidationReportHelp>

with specific help available everywhere you see the ⓘ symbol.

The following versions of software and data (see [references ⓘ](#)) were used in the production of this report:

MolProbity : 4.02b-467
Mogul : 1.8.4, CSD as541be (2020)
Xtriage (Phenix) : 1.13
EDS : 2.26
buster-report : 1.1.7 (2018)
Percentile statistics : 20191225.v01 (using entries in the PDB archive December 25th 2019)
Refmac : 5.8.0267
CCP4 : 7.1.010 (Gargrove)
Ideal geometry (proteins) : Engh & Huber (2001)
Ideal geometry (DNA, RNA) : Parkinson et al. (1996)
Validation Pipeline (wwPDB-VP) : 2.26

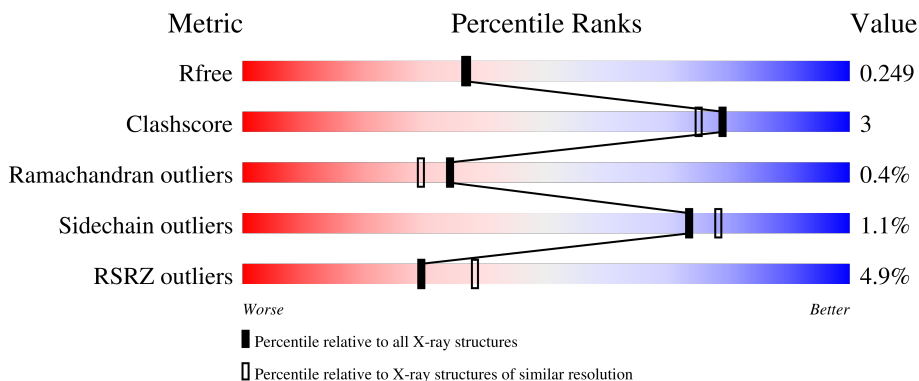
1 Overall quality at a glance

The following experimental techniques were used to determine the structure:

X-RAY DIFFRACTION

The reported resolution of this entry is 2.15 Å.

Percentile scores (ranging between 0-100) for global validation metrics of the entry are shown in the following graphic. The table shows the number of entries on which the scores are based.



Metric	Whole archive (#Entries)	Similar resolution (#Entries, resolution range(Å))
R_{free}	130704	1479 (2.16-2.16)
Clashscore	141614	1585 (2.16-2.16)
Ramachandran outliers	138981	1560 (2.16-2.16)
Sidechain outliers	138945	1559 (2.16-2.16)
RSRZ outliers	127900	1456 (2.16-2.16)

The table below summarises the geometric issues observed across the polymeric chains and their fit to the electron density. The red, orange, yellow and green segments of the lower bar indicate the fraction of residues that contain outliers for ≥ 3 , 2, 1 and 0 types of geometric quality criteria respectively. A grey segment represents the fraction of residues that are not modelled. The numeric value for each fraction is indicated below the corresponding segment, with a dot representing fractions $\leq 5\%$. The upper red bar (where present) indicates the fraction of residues that have poor fit to the electron density. The numeric value is given above the bar.

Mol	Chain	Length	Quality of chain
1	A	303	 3% 86% 6% 8%
1	B	303	 7% 89% 6% 5%
1	C	303	 % 86% 5% 8%
1	D	303	 7% 88% 6% 6%

2 Entry composition i

There are 6 unique types of molecules in this entry. The entry contains 9136 atoms, of which 0 are hydrogens and 0 are deuteriums.

In the tables below, the ZeroOcc column contains the number of atoms modelled with zero occupancy, the AltConf column contains the number of residues with at least one atom in alternate conformation and the Trace column contains the number of residues modelled with at most 2 atoms.

- Molecule 1 is a protein called Glucose-1-phosphate thymidyltransferase.

Mol	Chain	Residues	Atoms					ZeroOcc	AltConf	Trace
			Total	C	N	O	S			
1	A	279	Total 2173	C 1391	N 362	O 416	S 4	0	0	0
1	B	289	Total 2206	C 1416	N 361	O 425	S 4	0	0	0
1	C	279	Total 2161	C 1386	N 358	O 413	S 4	0	0	0
1	D	285	Total 2179	C 1398	N 362	O 415	S 4	0	0	0

There are 40 discrepancies between the modelled and reference sequences:

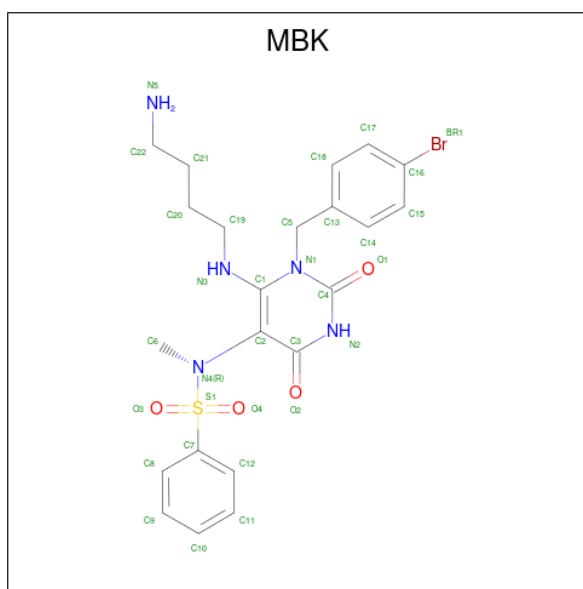
Chain	Residue	Modelled	Actual	Comment	Reference
A	-9	HIS	-	expression tag	UNP Q9HU22
A	-8	HIS	-	expression tag	UNP Q9HU22
A	-7	HIS	-	expression tag	UNP Q9HU22
A	-6	HIS	-	expression tag	UNP Q9HU22
A	-5	HIS	-	expression tag	UNP Q9HU22
A	-4	HIS	-	expression tag	UNP Q9HU22
A	-3	GLY	-	expression tag	UNP Q9HU22
A	-2	SER	-	expression tag	UNP Q9HU22
A	-1	MET	-	expression tag	UNP Q9HU22
A	0	ALA	-	expression tag	UNP Q9HU22
B	-9	HIS	-	expression tag	UNP Q9HU22
B	-8	HIS	-	expression tag	UNP Q9HU22
B	-7	HIS	-	expression tag	UNP Q9HU22
B	-6	HIS	-	expression tag	UNP Q9HU22
B	-5	HIS	-	expression tag	UNP Q9HU22
B	-4	HIS	-	expression tag	UNP Q9HU22
B	-3	GLY	-	expression tag	UNP Q9HU22
B	-2	SER	-	expression tag	UNP Q9HU22
B	-1	MET	-	expression tag	UNP Q9HU22
B	0	ALA	-	expression tag	UNP Q9HU22
C	-9	HIS	-	expression tag	UNP Q9HU22

Continued on next page...

Continued from previous page...

Chain	Residue	Modelled	Actual	Comment	Reference
C	-8	HIS	-	expression tag	UNP Q9HU22
C	-7	HIS	-	expression tag	UNP Q9HU22
C	-6	HIS	-	expression tag	UNP Q9HU22
C	-5	HIS	-	expression tag	UNP Q9HU22
C	-4	HIS	-	expression tag	UNP Q9HU22
C	-3	GLY	-	expression tag	UNP Q9HU22
C	-2	SER	-	expression tag	UNP Q9HU22
C	-1	MET	-	expression tag	UNP Q9HU22
C	0	ALA	-	expression tag	UNP Q9HU22
D	-9	HIS	-	expression tag	UNP Q9HU22
D	-8	HIS	-	expression tag	UNP Q9HU22
D	-7	HIS	-	expression tag	UNP Q9HU22
D	-6	HIS	-	expression tag	UNP Q9HU22
D	-5	HIS	-	expression tag	UNP Q9HU22
D	-4	HIS	-	expression tag	UNP Q9HU22
D	-3	GLY	-	expression tag	UNP Q9HU22
D	-2	SER	-	expression tag	UNP Q9HU22
D	-1	MET	-	expression tag	UNP Q9HU22
D	0	ALA	-	expression tag	UNP Q9HU22

- Molecule 2 is {N}-[6-(4-azanylbutylamino)-1-[(4-bromophenyl)methyl]-2,4-bis(oxidanylidene)pyrimidin-5-yl]-{N}-methyl-benzenesulfonamide (three-letter code: MBK) (formula: C₂₂H₂₆BrN₅O₄S) (labeled as "Ligand of Interest" by depositor).



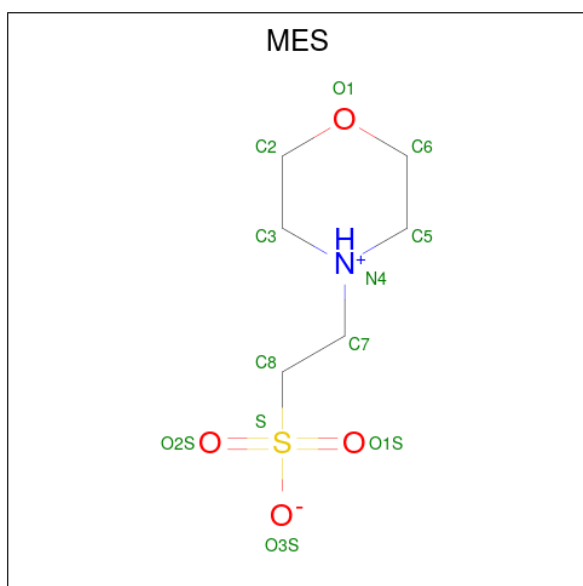
Mol	Chain	Residues	Atoms					ZeroOcc	AltConf	
			Total	Br	C	N	O			S
2	A	1	33	1	22	5	4	1	0	0

Continued on next page...

Continued from previous page...

Mol	Chain	Residues	Atoms						ZeroOcc	AltConf
			Total	Br	C	N	O	S		
2	B	1	Total 33	Br 1	C 22	N 5	O 4	S 1	0	0
2	C	1	Total 33	Br 1	C 22	N 5	O 4	S 1	0	0
2	D	1	Total 33	Br 1	C 22	N 5	O 4	S 1	0	0

- Molecule 3 is 2-(N-MORPHOLINO)-ETHANESULFONIC ACID (three-letter code: MES) (formula: C₆H₁₃NO₄S).



Mol	Chain	Residues	Atoms					ZeroOcc	AltConf
			Total	C	N	O	S		
3	A	1	Total 12	C 6	N 1	O 4	S 1	0	0
3	B	1	Total 12	C 6	N 1	O 4	S 1	0	0

- Molecule 4 is BROMIDE ION (three-letter code: BR) (formula: Br).

Mol	Chain	Residues	Atoms	ZeroOcc	AltConf
4	A	1	Total 1	Br 1	0

- Molecule 5 is CHLORIDE ION (three-letter code: CL) (formula: Cl).

Mol	Chain	Residues	Atoms	ZeroOcc	AltConf
5	A	4	Total Cl 4 4	0	0
5	B	3	Total Cl 3 3	0	0
5	C	3	Total Cl 3 3	0	0
5	D	4	Total Cl 4 4	0	0

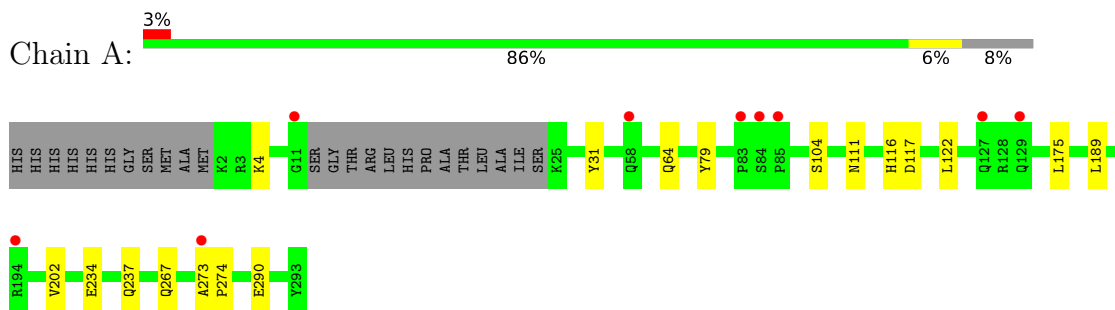
- Molecule 6 is water.

Mol	Chain	Residues	Atoms	ZeroOcc	AltConf
6	A	73	Total O 73 73	0	0
6	B	50	Total O 50 50	0	0
6	C	72	Total O 72 72	0	0
6	D	51	Total O 51 51	0	0

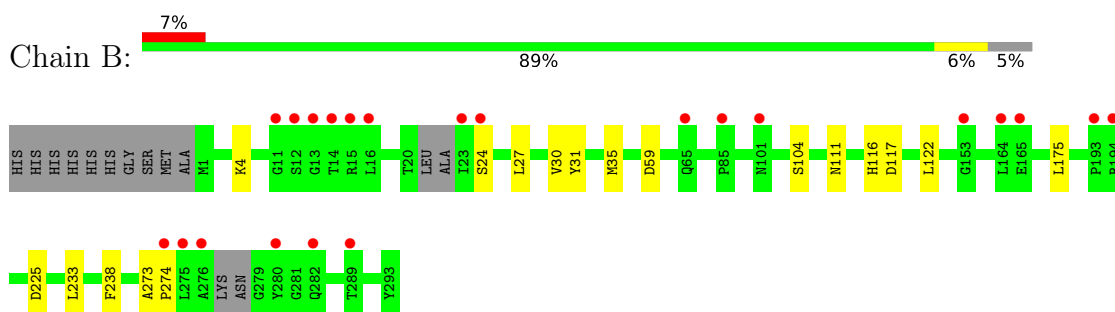
3 Residue-property plots [i](#)

These plots are drawn for all protein, RNA, DNA and oligosaccharide chains in the entry. The first graphic for a chain summarises the proportions of the various outlier classes displayed in the second graphic. The second graphic shows the sequence view annotated by issues in geometry and electron density. Residues are color-coded according to the number of geometric quality criteria for which they contain at least one outlier: green = 0, yellow = 1, orange = 2 and red = 3 or more. A red dot above a residue indicates a poor fit to the electron density ($RSRZ > 2$). Stretches of 2 or more consecutive residues without any outlier are shown as a green connector. Residues present in the sample, but not in the model, are shown in grey.

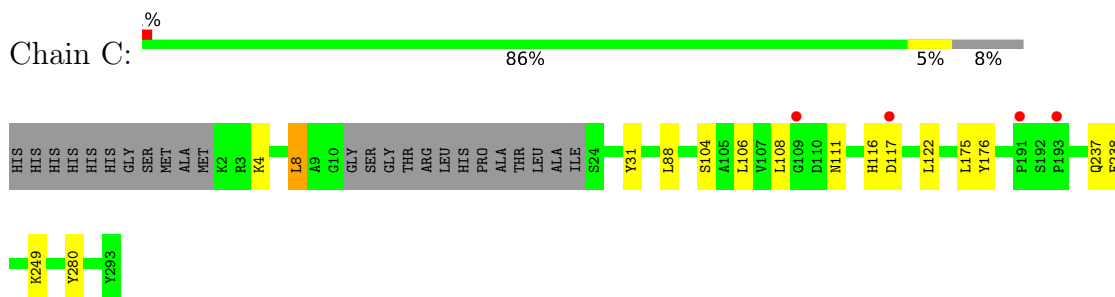
- Molecule 1: Glucose-1-phosphate thymidyltransferase



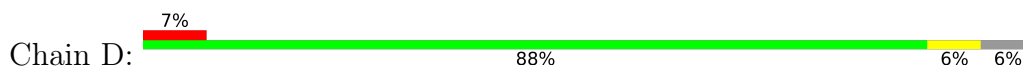
- Molecule 1: Glucose-1-phosphate thymidyltransferase

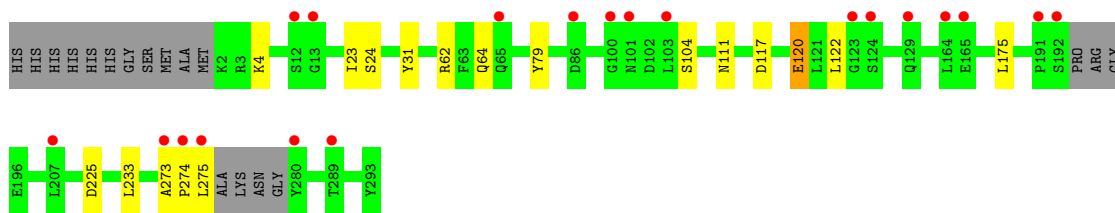


- Molecule 1: Glucose-1-phosphate thymidyltransferase



- Molecule 1: Glucose-1-phosphate thymidyltransferase





4 Data and refinement statistics

Property	Value	Source
Space group	P 1 21 1	Depositor
Cell constants a, b, c, α , β , γ	70.45Å 90.89Å 97.42Å 90.00° 95.43° 90.00°	Depositor
Resolution (Å)	24.09 – 2.15 24.08 – 2.15	Depositor EDS
% Data completeness (in resolution range)	99.7 (24.09-2.15) 99.8 (24.08-2.15)	Depositor EDS
R_{merge}	0.12	Depositor
R_{sym}	(Not available)	Depositor
$\langle I/\sigma(I) \rangle$ ¹	2.96 (at 2.15Å)	Xtrriage
Refinement program	REFMAC 5.8.0257	Depositor
R, R_{free}	0.212 , 0.243 0.217 , 0.249	Depositor DCC
R_{free} test set	3257 reflections (4.90%)	wwPDB-VP
Wilson B-factor (Å ²)	22.5	Xtrriage
Anisotropy	0.150	Xtrriage
Bulk solvent k_{sol} (e/Å ³), B_{sol} (Å ²)	(Not available) , (Not available)	EDS
L-test for twinning ²	$\langle L \rangle = 0.48$, $\langle L^2 \rangle = 0.31$	Xtrriage
Estimated twinning fraction	No twinning to report.	Xtrriage
F_o, F_c correlation	0.93	EDS
Total number of atoms	9136	wwPDB-VP
Average B, all atoms (Å ²)	25.0	wwPDB-VP

Xtrriage's analysis on translational NCS is as follows: *The largest off-origin peak in the Patterson function is 5.57% of the height of the origin peak. No significant pseudotranslation is detected.*

¹Intensities estimated from amplitudes.

²Theoretical values of $\langle |L| \rangle$, $\langle L^2 \rangle$ for acentric reflections are 0.5, 0.333 respectively for untwinned datasets, and 0.375, 0.2 for perfectly twinned datasets.

5 Model quality [i](#)

5.1 Standard geometry [i](#)

Bond lengths and bond angles in the following residue types are not validated in this section: CL, MBK, MES, BR

The Z score for a bond length (or angle) is the number of standard deviations the observed value is removed from the expected value. A bond length (or angle) with $|Z| > 5$ is considered an outlier worth inspection. RMSZ is the root-mean-square of all Z scores of the bond lengths (or angles).

Mol	Chain	Bond lengths		Bond angles	
		RMSZ	# Z >5	RMSZ	# Z >5
1	A	0.65	0/2220	0.75	0/3015
1	B	0.65	0/2254	0.72	0/3065
1	C	0.65	0/2208	0.75	0/3000
1	D	0.65	0/2225	0.74	0/3026
All	All	0.65	0/8907	0.74	0/12106

There are no bond length outliers.

There are no bond angle outliers.

There are no chirality outliers.

There are no planarity outliers.

5.2 Too-close contacts [i](#)

In the following table, the Non-H and H(model) columns list the number of non-hydrogen atoms and hydrogen atoms in the chain respectively. The H(added) column lists the number of hydrogen atoms added and optimized by MolProbity. The Clashes column lists the number of clashes within the asymmetric unit, whereas Symm-Clashes lists symmetry-related clashes.

Mol	Chain	Non-H	H(model)	H(added)	Clashes	Symm-Clashes
1	A	2173	0	2124	12	0
1	B	2206	0	2135	13	0
1	C	2161	0	2110	10	0
1	D	2179	0	2117	11	0
2	A	33	0	0	3	0
2	B	33	0	0	0	0
2	C	33	0	0	3	0
2	D	33	0	0	3	0
3	A	12	0	13	0	0

Continued on next page...

Continued from previous page...

Mol	Chain	Non-H	H(model)	H(added)	Clashes	Symm-Clashes
3	B	12	0	13	0	0
4	A	1	0	0	0	0
5	A	4	0	0	0	0
5	B	3	0	0	0	0
5	C	3	0	0	0	0
5	D	4	0	0	0	0
6	A	73	0	0	0	0
6	B	50	0	0	0	0
6	C	72	0	0	0	0
6	D	51	0	0	0	0
All	All	9136	0	8512	49	0

The all-atom clashscore is defined as the number of clashes found per 1000 atoms (including hydrogen atoms). The all-atom clashscore for this structure is 3.

All (49) close contacts within the same asymmetric unit are listed below, sorted by their clash magnitude.

Atom-1	Atom-2	Interatomic distance (Å)	Clash overlap (Å)
2:C:301:MBK:S1	2:C:301:MBK:N4	1.95	1.39
2:D:301:MBK:S1	2:D:301:MBK:N4	1.97	1.37
2:A:301:MBK:S1	2:A:301:MBK:N4	1.97	1.36
2:D:301:MBK:S1	2:D:301:MBK:C6	2.81	0.67
2:A:301:MBK:S1	2:A:301:MBK:C6	2.83	0.66
1:B:24:SER:HB2	1:B:59:ASP:OD1	1.97	0.65
2:C:301:MBK:S1	2:C:301:MBK:C6	2.85	0.63
1:D:117:ASP:HA	1:D:120:GLU:HG2	1.84	0.58
1:A:64:GLN:HG3	1:A:79:TYR:CD1	2.43	0.53
1:A:267:GLN:HA	1:A:267:GLN:OE1	2.09	0.52
2:C:301:MBK:S1	2:C:301:MBK:C2	2.92	0.49
1:D:23:ILE:HA	1:D:62:ARG:NH2	2.27	0.49
1:D:64:GLN:HG2	1:D:79:TYR:CD1	2.47	0.49
1:A:237:GLN:HG3	1:B:233:LEU:HD11	1.93	0.49
1:B:30:VAL:HG21	1:B:35:MET:SD	2.53	0.48
1:C:108:LEU:HD12	1:C:176:TYR:CE1	2.48	0.48
1:A:116:HIS:O	1:A:117:ASP:HB2	2.14	0.48
1:B:117:ASP:OD2	1:C:117:ASP:OD2	2.31	0.47
1:C:116:HIS:O	1:C:117:ASP:HB2	2.14	0.47
1:D:117:ASP:CA	1:D:120:GLU:HG2	2.45	0.47
1:C:106:LEU:HG	1:C:108:LEU:HG	1.96	0.46
1:B:122:LEU:HD21	1:B:175:LEU:HD21	1.98	0.46
1:B:116:HIS:O	1:B:117:ASP:HB2	2.16	0.45

Continued on next page...

Continued from previous page...

Atom-1	Atom-2	Interatomic distance (Å)	Clash overlap (Å)
1:D:273:ALA:HB3	1:D:274:PRO:HD3	1.97	0.45
1:C:237:GLN:HG3	1:D:233:LEU:HD11	1.99	0.44
2:D:301:MBK:S1	2:D:301:MBK:C2	2.96	0.44
1:A:234:GLU:HA	1:A:237:GLN:HE21	1.82	0.44
1:B:273:ALA:HB3	1:B:274:PRO:HD3	1.99	0.44
1:C:8:LEU:HD13	1:C:88:LEU:HD22	1.99	0.44
1:B:24:SER:HB3	1:B:27:LEU:HD12	2.00	0.43
1:A:122:LEU:HD21	1:A:175:LEU:HD21	2.00	0.43
1:C:249:LYS:HE3	1:C:280:TYR:HA	2.00	0.43
1:D:275:LEU:CD1	1:D:275:LEU:N	2.82	0.42
1:B:122:LEU:CD2	1:B:175:LEU:HD21	2.49	0.42
1:A:273:ALA:HB3	1:A:274:PRO:HD3	2.01	0.41
2:A:301:MBK:S1	2:A:301:MBK:C2	2.97	0.41
1:A:122:LEU:CD2	1:A:175:LEU:HD21	2.51	0.41
1:B:238:PHE:CE1	1:C:238:PHE:CE1	3.08	0.41
1:C:4:LYS:O	1:C:104:SER:HA	2.20	0.41
1:A:4:LYS:O	1:A:104:SER:HA	2.20	0.41
1:D:275:LEU:N	1:D:275:LEU:HD12	2.35	0.41
1:B:4:LYS:O	1:B:104:SER:HA	2.21	0.41
1:D:4:LYS:O	1:D:104:SER:HA	2.21	0.41
1:D:122:LEU:HD21	1:D:175:LEU:HD21	2.02	0.41
1:C:122:LEU:HD21	1:C:175:LEU:HD21	2.02	0.41
1:A:189:LEU:HD11	1:A:202:VAL:HG23	2.02	0.40
1:D:122:LEU:CD2	1:D:175:LEU:HD21	2.52	0.40
1:A:237:GLN:CG	1:B:233:LEU:HD11	2.51	0.40
1:A:237:GLN:HA	1:B:233:LEU:HD21	2.04	0.40

There are no symmetry-related clashes.

5.3 Torsion angles [\(i\)](#)

5.3.1 Protein backbone [\(i\)](#)

In the following table, the Percentiles column shows the percent Ramachandran outliers of the chain as a percentile score with respect to all X-ray entries followed by that with respect to entries of similar resolution.

The Analysed column shows the number of residues for which the backbone conformation was analysed, and the total number of residues.

Mol	Chain	Analysed	Favoured	Allowed	Outliers	Percentiles	
1	A	275/303 (91%)	270 (98%)	4 (2%)	1 (0%)	34	29
1	B	283/303 (93%)	279 (99%)	3 (1%)	1 (0%)	34	29
1	C	275/303 (91%)	270 (98%)	4 (2%)	1 (0%)	34	29
1	D	279/303 (92%)	275 (99%)	3 (1%)	1 (0%)	34	29
All	All	1112/1212 (92%)	1094 (98%)	14 (1%)	4 (0%)	34	29

All (4) Ramachandran outliers are listed below:

Mol	Chain	Res	Type
1	A	31	TYR
1	B	31	TYR
1	C	31	TYR
1	D	31	TYR

5.3.2 Protein sidechains [i](#)

In the following table, the Percentiles column shows the percent sidechain outliers of the chain as a percentile score with respect to all X-ray entries followed by that with respect to entries of similar resolution.

The Analysed column shows the number of residues for which the sidechain conformation was analysed, and the total number of residues.

Mol	Chain	Analysed	Rotameric	Outliers	Percentiles	
1	A	224/248 (90%)	222 (99%)	2 (1%)	78	83
1	B	224/248 (90%)	222 (99%)	2 (1%)	78	83
1	C	222/248 (90%)	220 (99%)	2 (1%)	78	83
1	D	221/248 (89%)	217 (98%)	4 (2%)	59	63
All	All	891/992 (90%)	881 (99%)	10 (1%)	73	78

All (10) residues with a non-rotameric sidechain are listed below:

Mol	Chain	Res	Type
1	A	111	ASN
1	A	290	GLU
1	B	111	ASN
1	B	225	ASP
1	C	8	LEU
1	C	111	ASN
1	D	24	SER

Continued on next page...

Continued from previous page...

Mol	Chain	Res	Type
1	D	111	ASN
1	D	120	GLU
1	D	225	ASP

Sometimes sidechains can be flipped to improve hydrogen bonding and reduce clashes. All (3) such sidechains are listed below:

Mol	Chain	Res	Type
1	A	237	GLN
1	B	17	HIS
1	B	237	GLN

5.3.3 RNA [i](#)

There are no RNA molecules in this entry.

5.4 Non-standard residues in protein, DNA, RNA chains [i](#)

There are no non-standard protein/DNA/RNA residues in this entry.

5.5 Carbohydrates [i](#)

There are no monosaccharides in this entry.

5.6 Ligand geometry [i](#)

Of 21 ligands modelled in this entry, 15 are monoatomic - leaving 6 for Mogul analysis.

In the following table, the Counts columns list the number of bonds (or angles) for which Mogul statistics could be retrieved, the number of bonds (or angles) that are observed in the model and the number of bonds (or angles) that are defined in the Chemical Component Dictionary. The Link column lists molecule types, if any, to which the group is linked. The Z score for a bond length (or angle) is the number of standard deviations the observed value is removed from the expected value. A bond length (or angle) with $|Z| > 2$ is considered an outlier worth inspection. RMSZ is the root-mean-square of all Z scores of the bond lengths (or angles).

Mol	Type	Chain	Res	Link	Bond lengths			Bond angles		
					Counts	RMSZ	# Z > 2	Counts	RMSZ	# Z > 2
2	MBK	C	301	-	32,35,35	4.78	6 (18%)	37,49,49	3.25	14 (37%)
3	MES	B	302	-	12,12,12	0.82	0	14,16,16	0.57	0

Mol	Type	Chain	Res	Link	Bond lengths			Bond angles		
					Counts	RMSZ	# Z > 2	Counts	RMSZ	# Z > 2
2	MBK	B	301	-	32,35,35	4.23	6 (18%)	37,49,49	2.85	12 (32%)
2	MBK	A	301	-	32,35,35	4.94	6 (18%)	37,49,49	3.09	13 (35%)
3	MES	A	302	-	12,12,12	0.75	0	14,16,16	0.45	0
2	MBK	D	301	-	32,35,35	4.89	6 (18%)	37,49,49	3.13	10 (27%)

In the following table, the Chirals column lists the number of chiral outliers, the number of chiral centers analysed, the number of these observed in the model and the number defined in the Chemical Component Dictionary. Similar counts are reported in the Torsion and Rings columns. '-' means no outliers of that kind were identified.

Mol	Type	Chain	Res	Link	Chirals	Torsions	Rings
2	MBK	C	301	-	-	6/26/26/26	0/3/3/3
3	MES	B	302	-	-	0/6/14/14	0/1/1/1
2	MBK	B	301	-	-	12/26/26/26	0/3/3/3
2	MBK	A	301	-	-	10/26/26/26	0/3/3/3
3	MES	A	302	-	-	1/6/14/14	0/1/1/1
2	MBK	D	301	-	-	6/26/26/26	0/3/3/3

All (24) bond length outliers are listed below:

Mol	Chain	Res	Type	Atoms	Z	Observed(Å)	Ideal(Å)
2	A	301	MBK	S1-N4	23.98	1.97	1.64
2	D	301	MBK	S1-N4	23.88	1.97	1.64
2	C	301	MBK	S1-N4	22.60	1.95	1.64
2	B	301	MBK	S1-N4	18.47	1.90	1.64
2	B	301	MBK	O3-S1	9.34	1.53	1.43
2	C	301	MBK	O3-S1	8.82	1.53	1.43
2	A	301	MBK	O3-S1	8.47	1.52	1.43
2	D	301	MBK	O3-S1	8.30	1.52	1.43
2	C	301	MBK	O4-S1	7.31	1.51	1.43
2	B	301	MBK	O4-S1	7.30	1.51	1.43
2	A	301	MBK	O4-S1	7.21	1.51	1.43
2	D	301	MBK	O4-S1	6.73	1.51	1.43
2	C	301	MBK	C5-C13	-5.60	1.37	1.51
2	A	301	MBK	C5-C13	-5.41	1.38	1.51
2	B	301	MBK	C5-C13	-5.21	1.38	1.51
2	B	301	MBK	C3-N2	5.17	1.42	1.33
2	D	301	MBK	C5-C13	-4.99	1.39	1.51
2	C	301	MBK	C2-N4	-4.98	1.38	1.45
2	B	301	MBK	C2-N4	-4.92	1.39	1.45
2	D	301	MBK	C2-N4	-4.66	1.39	1.45

Continued on next page...

Continued from previous page...

Mol	Chain	Res	Type	Atoms	Z	Observed(Å)	Ideal(Å)
2	C	301	MBK	C3-N2	4.55	1.41	1.33
2	A	301	MBK	C2-N4	-4.54	1.39	1.45
2	D	301	MBK	C3-N2	4.33	1.40	1.33
2	A	301	MBK	C3-N2	4.30	1.40	1.33

All (49) bond angle outliers are listed below:

Mol	Chain	Res	Type	Atoms	Z	Observed(°)	Ideal(°)
2	D	301	MBK	N3-C1-N1	10.09	123.72	116.65
2	A	301	MBK	O3-S1-N4	9.74	116.64	106.77
2	B	301	MBK	C4-N2-C3	8.18	122.05	115.14
2	A	301	MBK	N3-C1-N1	8.18	122.38	116.65
2	C	301	MBK	N3-C1-N1	8.16	122.37	116.65
2	C	301	MBK	O4-S1-O3	-8.15	106.32	119.52
2	C	301	MBK	O3-S1-N4	7.95	114.83	106.77
2	D	301	MBK	O3-S1-N4	7.87	114.75	106.77
2	A	301	MBK	O4-S1-O3	-7.36	107.59	119.52
2	B	301	MBK	N3-C1-N1	7.35	121.80	116.65
2	D	301	MBK	O4-S1-O3	-6.84	108.44	119.52
2	C	301	MBK	C4-N2-C3	6.78	120.87	115.14
2	D	301	MBK	C4-N2-C3	6.21	120.39	115.14
2	A	301	MBK	C4-N2-C3	6.13	120.32	115.14
2	B	301	MBK	O4-S1-O3	-5.72	110.25	119.52
2	B	301	MBK	O3-S1-N4	5.62	112.47	106.77
2	C	301	MBK	C1-C2-C3	5.40	118.66	114.44
2	D	301	MBK	C1-C2-C3	5.29	118.58	114.44
2	C	301	MBK	C13-C5-N1	5.23	120.76	112.63
2	C	301	MBK	O4-S1-N4	5.20	112.04	106.77
2	B	301	MBK	C1-C2-C3	4.98	118.34	114.44
2	A	301	MBK	C1-C2-C3	4.93	118.30	114.44
2	B	301	MBK	C6-N4-S1	-4.88	108.60	116.83
2	D	301	MBK	C6-N4-S1	-4.82	108.70	116.83
2	D	301	MBK	C13-C5-N1	4.63	119.81	112.63
2	A	301	MBK	C6-N4-S1	-4.34	109.50	116.83
2	B	301	MBK	C13-C5-N1	4.05	118.92	112.63
2	A	301	MBK	C13-C5-N1	3.24	117.66	112.63
2	C	301	MBK	C6-N4-S1	-3.15	111.51	116.83
2	B	301	MBK	C2-C3-N2	-3.12	116.72	123.14
2	C	301	MBK	C6-N4-C2	-3.07	113.46	117.77
2	C	301	MBK	C5-C13-C14	2.85	125.81	120.40
2	A	301	MBK	C5-C13-C18	2.80	125.73	120.40
2	C	301	MBK	C2-C3-N2	-2.74	117.52	123.14

Continued on next page...

Continued from previous page...

Mol	Chain	Res	Type	Atoms	Z	Observed(°)	Ideal(°)
2	A	301	MBK	O4-S1-N4	2.67	109.47	106.77
2	D	301	MBK	C5-C13-C14	2.59	125.32	120.40
2	C	301	MBK	C5-C13-C18	-2.56	115.54	120.40
2	D	301	MBK	O4-S1-N4	2.54	109.35	106.77
2	B	301	MBK	C5-C13-C14	2.47	125.10	120.40
2	B	301	MBK	C6-N4-C2	-2.47	114.30	117.77
2	D	301	MBK	C2-C3-N2	-2.31	118.39	123.14
2	A	301	MBK	C5-C13-C14	-2.30	116.04	120.40
2	A	301	MBK	C5-N1-C4	2.27	120.58	117.92
2	A	301	MBK	C2-C3-N2	-2.23	118.56	123.14
2	C	301	MBK	C20-C19-N3	-2.21	105.55	111.49
2	B	301	MBK	O4-S1-C7	2.19	110.82	108.05
2	B	301	MBK	C5-C13-C18	-2.18	116.26	120.40
2	C	301	MBK	O3-S1-C7	-2.08	105.41	108.05
2	A	301	MBK	O4-S1-C7	2.06	110.65	108.05

There are no chirality outliers.

All (35) torsion outliers are listed below:

Mol	Chain	Res	Type	Atoms
2	A	301	MBK	C2-C1-N3-C19
2	A	301	MBK	N1-C1-N3-C19
2	A	301	MBK	C2-N4-S1-O4
2	B	301	MBK	C2-C1-N3-C19
2	B	301	MBK	N1-C1-N3-C19
2	B	301	MBK	C2-N4-S1-O4
2	C	301	MBK	C2-C1-N3-C19
2	C	301	MBK	N1-C1-N3-C19
2	C	301	MBK	C2-N4-S1-O4
2	D	301	MBK	C2-C1-N3-C19
2	D	301	MBK	N1-C1-N3-C19
2	D	301	MBK	C2-N4-S1-O4
3	A	302	MES	C8-C7-N4-C5
2	B	301	MBK	N3-C19-C20-C21
2	A	301	MBK	N3-C19-C20-C21
2	B	301	MBK	C19-C20-C21-C22
2	A	301	MBK	C19-C20-C21-C22
2	B	301	MBK	C14-C13-C5-N1
2	C	301	MBK	C14-C13-C5-N1
2	A	301	MBK	C18-C13-C5-N1
2	C	301	MBK	C18-C13-C5-N1
2	B	301	MBK	C18-C13-C5-N1

Continued on next page...

Continued from previous page...

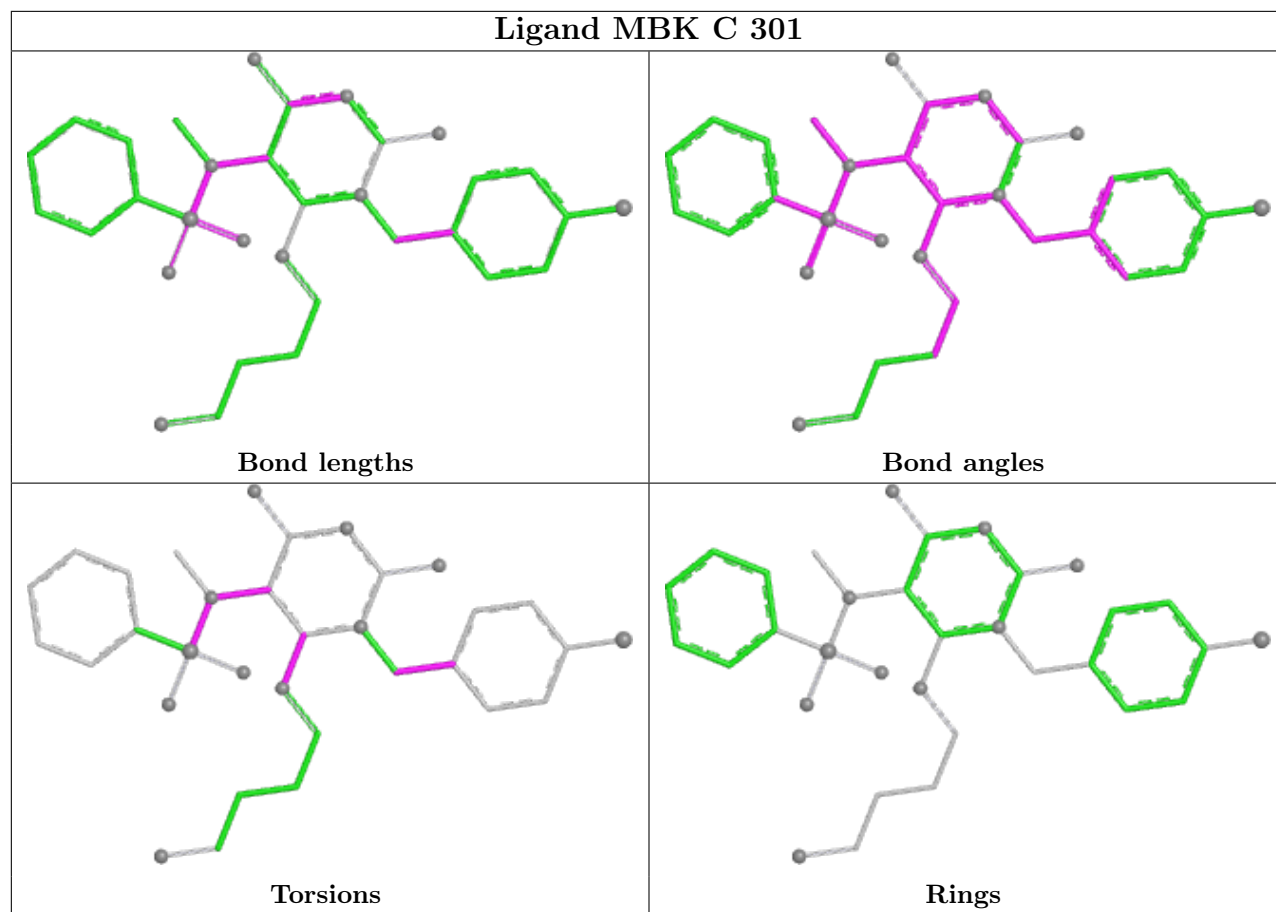
Mol	Chain	Res	Type	Atoms
2	A	301	MBK	C14-C13-C5-N1
2	D	301	MBK	C18-C13-C5-N1
2	D	301	MBK	C14-C13-C5-N1
2	A	301	MBK	C6-N4-S1-O4
2	B	301	MBK	C20-C21-C22-N5
2	A	301	MBK	C3-C2-N4-C6
2	B	301	MBK	C3-C2-N4-C6
2	C	301	MBK	C3-C2-N4-C6
2	D	301	MBK	C3-C2-N4-C6
2	B	301	MBK	C6-N4-S1-O4
2	B	301	MBK	C12-C7-S1-O4
2	A	301	MBK	C20-C21-C22-N5
2	B	301	MBK	C8-C7-S1-O4

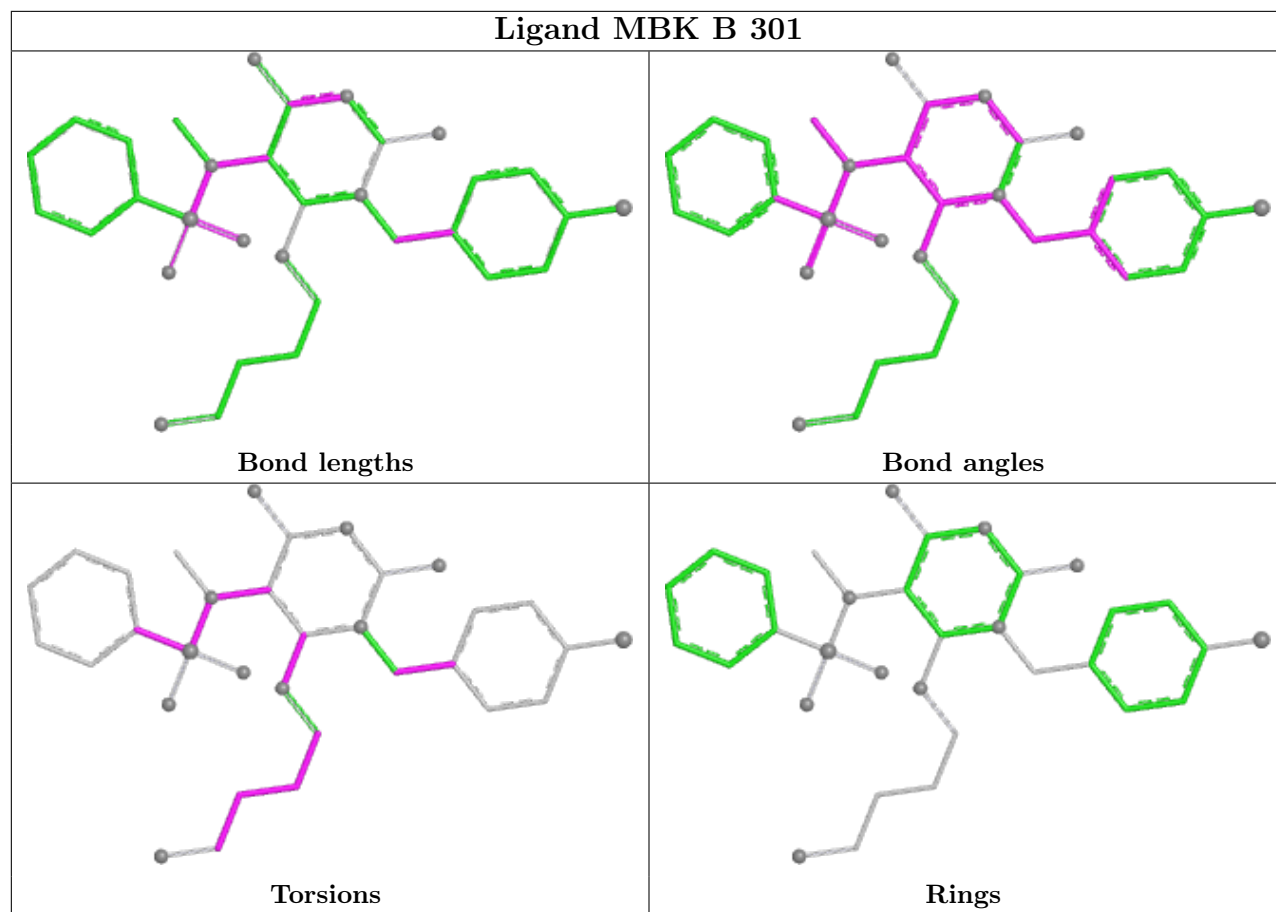
There are no ring outliers.

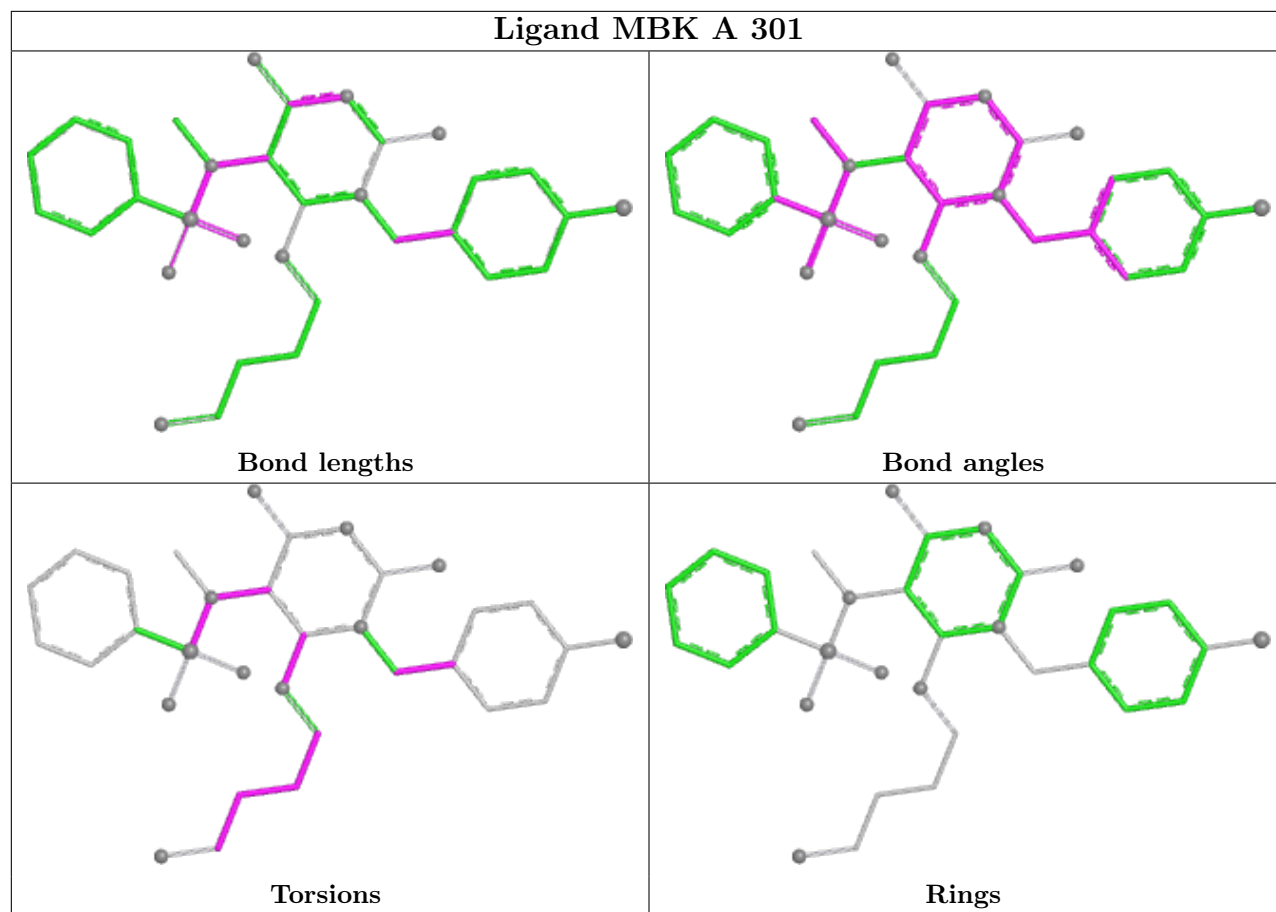
3 monomers are involved in 9 short contacts:

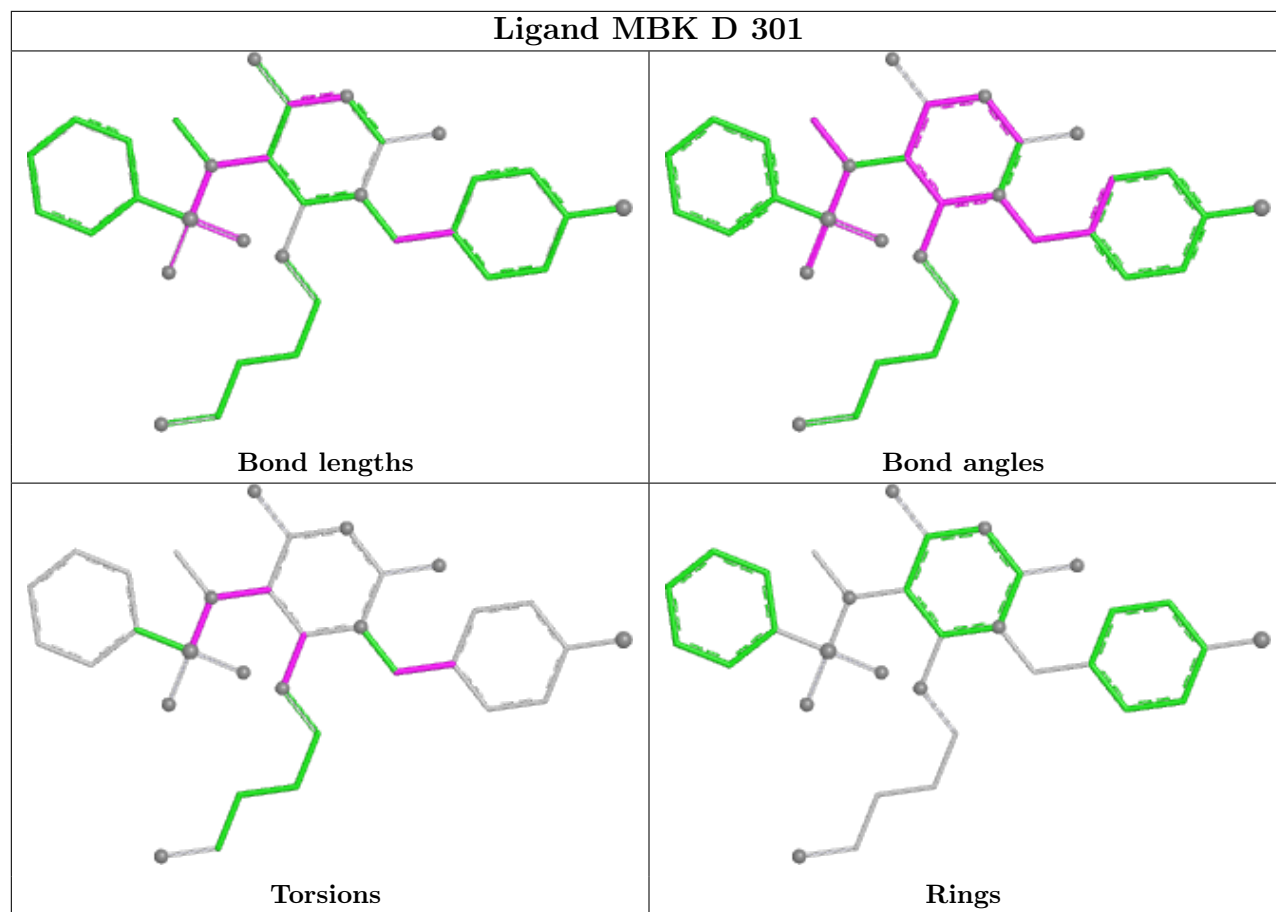
Mol	Chain	Res	Type	Clashes	Symm-Clashes
2	C	301	MBK	3	0
2	A	301	MBK	3	0
2	D	301	MBK	3	0

The following is a two-dimensional graphical depiction of Mogul quality analysis of bond lengths, bond angles, torsion angles, and ring geometry for all instances of the Ligand of Interest. In addition, ligands with molecular weight > 250 and outliers as shown on the validation Tables will also be included. For torsion angles, if less than 5% of the Mogul distribution of torsion angles is within 10 degrees of the torsion angle in question, then that torsion angle is considered an outlier. Any bond that is central to one or more torsion angles identified as an outlier by Mogul will be highlighted in the graph. For rings, the root-mean-square deviation (RMSD) between the ring in question and similar rings identified by Mogul is calculated over all ring torsion angles. If the average RMSD is greater than 60 degrees and the minimal RMSD between the ring in question and any Mogul-identified rings is also greater than 60 degrees, then that ring is considered an outlier. The outliers are highlighted in purple. The color gray indicates Mogul did not find sufficient equivalents in the CSD to analyse the geometry.









5.7 Other polymers [i](#)

There are no such residues in this entry.

5.8 Polymer linkage issues [i](#)

There are no chain breaks in this entry.

6 Fit of model and data

6.1 Protein, DNA and RNA chains

In the following table, the column labelled ‘#RSRZ > 2’ contains the number (and percentage) of RSRZ outliers, followed by percent RSRZ outliers for the chain as percentile scores relative to all X-ray entries and entries of similar resolution. The OWAB column contains the minimum, median, 95th percentile and maximum values of the occupancy-weighted average B-factor per residue. The column labelled ‘Q < 0.9’ lists the number of (and percentage) of residues with an average occupancy less than 0.9.

Mol	Chain	Analysed	<RSRZ>	#RSRZ>2	OWAB(Å ²)	Q<0.9
1	A	279/303 (92%)	0.34	9 (3%) 47 56	13, 23, 40, 50	0
1	B	289/303 (95%)	0.41	22 (7%) 13 19	13, 26, 43, 51	0
1	C	279/303 (92%)	0.21	4 (1%) 75 80	13, 20, 37, 59	0
1	D	285/303 (94%)	0.51	20 (7%) 16 22	13, 28, 44, 57	0
All	All	1132/1212 (93%)	0.37	55 (4%) 29 38	13, 24, 42, 59	0

All (55) RSRZ outliers are listed below:

Mol	Chain	Res	Type	RSRZ
1	D	275	LEU	4.3
1	D	164	LEU	3.9
1	C	193	PRO	3.8
1	D	191	PRO	3.6
1	B	13	GLY	3.2
1	B	275	LEU	3.2
1	D	100	GLY	3.0
1	B	23	ILE	3.0
1	B	276	ALA	3.0
1	B	289	THR	3.0
1	D	123	GLY	2.9
1	D	101	ASN	2.9
1	D	124	SER	2.9
1	B	164	LEU	2.9
1	B	193	PRO	2.8
1	A	11	GLY	2.8
1	A	83	PRO	2.7
1	A	127	GLN	2.7
1	B	24	SER	2.7
1	D	129	GLN	2.7
1	D	273	ALA	2.7

Continued on next page...

Continued from previous page...

Mol	Chain	Res	Type	RSRZ
1	D	86	ASP	2.6
1	A	129	GLN	2.6
1	B	15	ARG	2.6
1	B	12	SER	2.5
1	A	84	SER	2.5
1	C	117	ASP	2.5
1	D	192	SER	2.4
1	B	282	GLN	2.4
1	D	274	PRO	2.4
1	D	12	SER	2.4
1	C	109	GLY	2.3
1	D	280	TYR	2.3
1	B	14	THR	2.3
1	B	274	PRO	2.3
1	B	194	ARG	2.3
1	B	11	GLY	2.2
1	A	85	PRO	2.2
1	B	101	ASN	2.2
1	D	103	LEU	2.2
1	B	165	GLU	2.1
1	A	58	GLN	2.1
1	B	280	TYR	2.1
1	D	65	GLN	2.1
1	D	165	GLU	2.1
1	C	191	PRO	2.1
1	D	289	THR	2.1
1	B	65	GLN	2.1
1	B	153	GLY	2.1
1	B	85	PRO	2.1
1	B	16	LEU	2.0
1	D	207	LEU	2.0
1	A	194	ARG	2.0
1	A	273	ALA	2.0
1	D	13	GLY	2.0

6.2 Non-standard residues in protein, DNA, RNA chains

There are no non-standard protein/DNA/RNA residues in this entry.

6.3 Carbohydrates [i](#)

There are no monosaccharides in this entry.

6.4 Ligands [i](#)

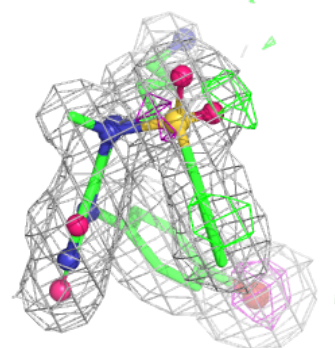
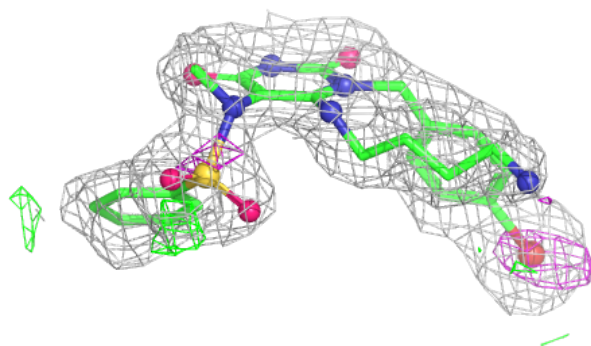
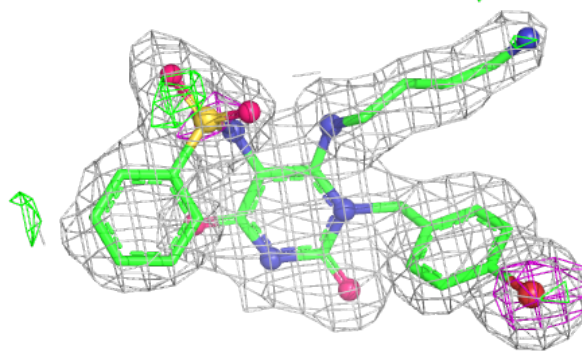
In the following table, the Atoms column lists the number of modelled atoms in the group and the number defined in the chemical component dictionary. The B-factors column lists the minimum, median, 95th percentile and maximum values of B factors of atoms in the group. The column labelled 'Q< 0.9' lists the number of atoms with occupancy less than 0.9.

Mol	Type	Chain	Res	Atoms	RSCC	RSR	B-factors(Å ²)	Q<0.9
3	MES	A	302	12/12	0.85	0.22	45,47,52,54	0
3	MES	B	302	12/12	0.90	0.22	44,46,47,51	0
2	MBK	D	301	33/33	0.95	0.13	22,25,30,31	0
5	CL	C	303	1/1	0.95	0.09	37,37,37,37	0
5	CL	C	304	1/1	0.95	0.12	31,31,31,31	0
2	MBK	C	301	33/33	0.96	0.12	18,21,27,28	0
2	MBK	A	301	33/33	0.96	0.12	17,20,30,30	0
5	CL	D	303	1/1	0.96	0.06	40,40,40,40	0
2	MBK	B	301	33/33	0.97	0.12	20,23,28,29	0
5	CL	B	304	1/1	0.98	0.17	16,16,16,16	0
5	CL	A	307	1/1	0.98	0.24	8,8,8,8	1
5	CL	D	304	1/1	0.98	0.17	16,16,16,16	0
5	CL	B	305	1/1	0.99	0.12	11,11,11,11	0
5	CL	C	302	1/1	0.99	0.14	9,9,9,9	0
5	CL	A	305	1/1	0.99	0.11	13,13,13,13	0
5	CL	A	306	1/1	0.99	0.12	12,12,12,12	0
5	CL	D	302	1/1	0.99	0.12	38,38,38,38	0
4	BR	A	303	1/1	0.99	0.03	25,25,25,25	0
5	CL	A	304	1/1	0.99	0.06	35,35,35,35	0
5	CL	D	305	1/1	0.99	0.03	21,21,21,21	0
5	CL	B	303	1/1	1.00	0.12	14,14,14,14	0

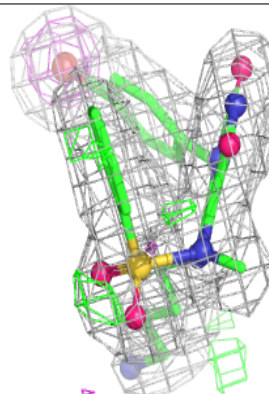
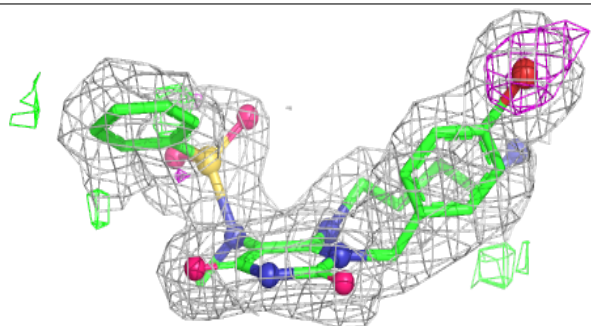
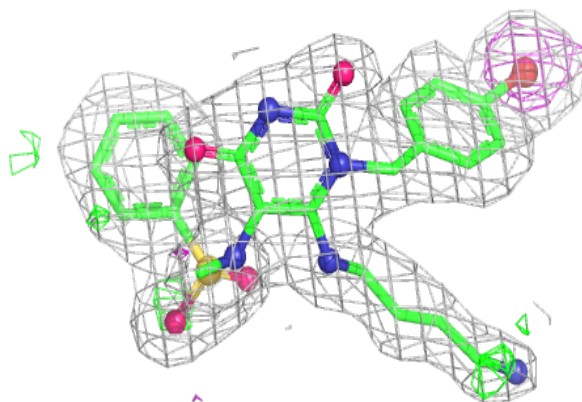
The following is a graphical depiction of the model fit to experimental electron density of all instances of the Ligand of Interest. In addition, ligands with molecular weight > 250 and outliers as shown on the geometry validation Tables will also be included. Each fit is shown from different orientation to approximate a three-dimensional view.

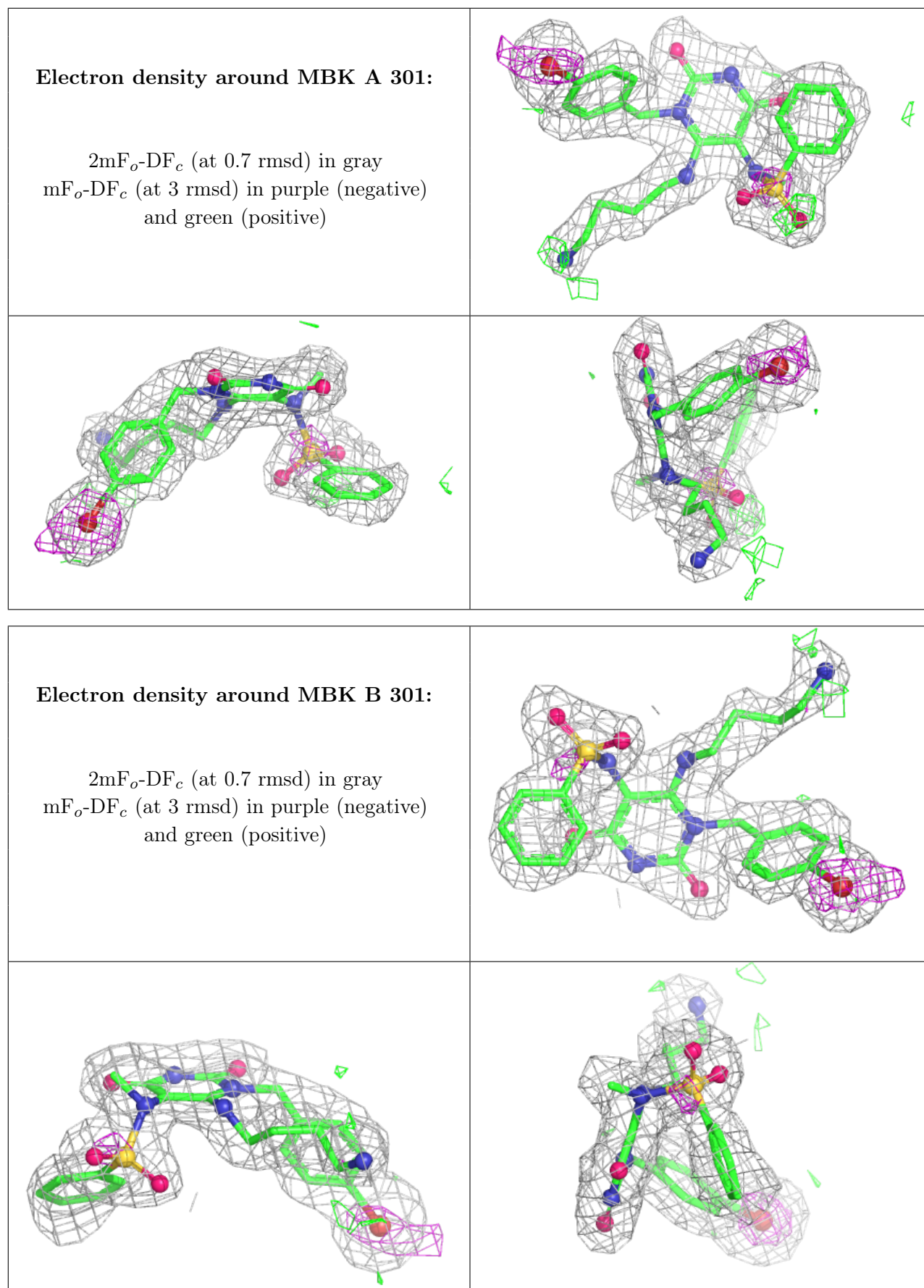
Electron density around MBK D 301:

$2mF_o-DF_c$ (at 0.7 rmsd) in gray
 mF_o-DF_c (at 3 rmsd) in purple (negative)
and green (positive)

**Electron density around MBK C 301:**

$2mF_o-DF_c$ (at 0.7 rmsd) in gray
 mF_o-DF_c (at 3 rmsd) in purple (negative)
and green (positive)





6.5 Other polymers [i](#)

There are no such residues in this entry.