



# Full wwPDB X-ray Structure Validation Report ⓘ

Mar 8, 2018 – 09:45 pm GMT

PDB ID : 1T41  
Title : Crystal structure of human aldose reductase complexed with NADP and IDD552  
Authors : Ruiz, F.; Hazemann, I.; Mitschler, A.; Chevrier, B.; Schneider, T.; Joachimiak, A.; Karplus, M.; Podjarny, A.  
Deposited on : 2004-04-28  
Resolution : 1.05 Å(reported)

This is a Full wwPDB X-ray Structure Validation Report for a publicly released PDB entry.

We welcome your comments at [validation@mail.wwpdb.org](mailto:validation@mail.wwpdb.org)

A user guide is available at

<https://www.wwpdb.org/validation/2017/XrayValidationReportHelp>

with specific help available everywhere you see the ⓘ symbol.

---

The following versions of software and data (see [references ⓘ](#)) were used in the production of this report:

MolProbity : 4.02b-467  
Mogul : 1.7.3 (157068), CSD as539be (2018)  
Xtriage (Phenix) : 1.13  
EDS : trunk30967  
Percentile statistics : 20171227.v01 (using entries in the PDB archive December 27th 2017)  
Refmac : 5.8.0158  
CCP4 : 7.0 (Gargrove)  
Ideal geometry (proteins) : Engh & Huber (2001)  
Ideal geometry (DNA, RNA) : Parkinson et al. (1996)  
Validation Pipeline (wwPDB-VP) : trunk30967

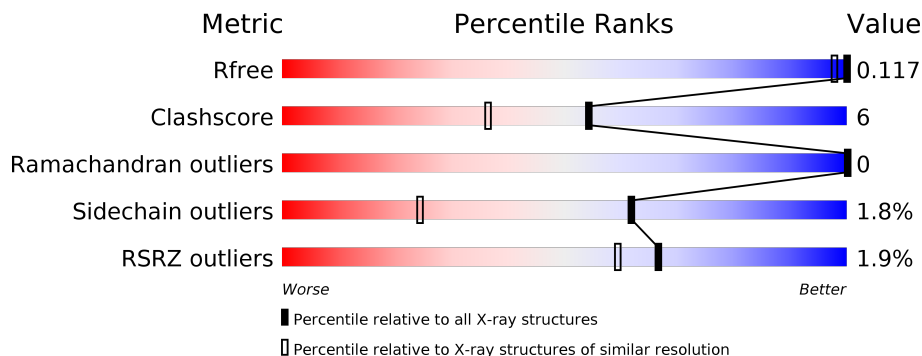
# 1 Overall quality at a glance

The following experimental techniques were used to determine the structure:

*X-RAY DIFFRACTION*

The reported resolution of this entry is 1.05 Å.

Percentile scores (ranging between 0-100) for global validation metrics of the entry are shown in the following graphic. The table shows the number of entries on which the scores are based.



Metric	Whole archive (#Entries)	Similar resolution (#Entries, resolution range(Å))
$R_{free}$	111664	1392 (1.12-1.00)
Clashscore	122126	1005 (1.10-1.02)
Ramachandran outliers	120053	1386 (1.12-1.00)
Sidechain outliers	120020	1384 (1.12-1.00)
RSRZ outliers	108989	1356 (1.12-1.00)

The table below summarises the geometric issues observed across the polymeric chains and their fit to the electron density. The red, orange, yellow and green segments on the lower bar indicate the fraction of residues that contain outliers for  $\geq 3$ , 2, 1 and 0 types of geometric quality criteria. A grey segment represents the fraction of residues that are not modelled. The numeric value for each fraction is indicated below the corresponding segment, with a dot representing fractions  $\leq 5\%$ . The upper red bar (where present) indicates the fraction of residues that have poor fit to the electron density. The numeric value is given above the bar.

Mol	Chain	Length	Quality of chain
1	A	316	<p>2% 84% 13%</p>

## 2 Entry composition [i](#)

There are 4 unique types of molecules in this entry. The entry contains 3222 atoms, of which 0 are hydrogens and 0 are deuteriums.

In the tables below, the ZeroOcc column contains the number of atoms modelled with zero occupancy, the AltConf column contains the number of residues with at least one atom in alternate conformation and the Trace column contains the number of residues modelled with at most 2 atoms.

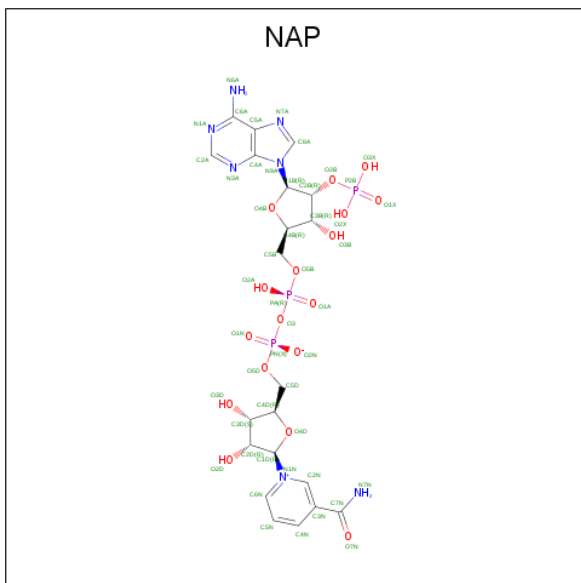
- Molecule 1 is a protein called Aldose reductase.

Mol	Chain	Residues	Atoms					ZeroOcc	AltConf	Trace
			Total	C	N	O	S			
1	A	316	2787	1783	470	519	15	0	59	0

There is a discrepancy between the modelled and reference sequences:

Chain	Residue	Modelled	Actual	Comment	Reference
A	4	ILE	LEU	SEE REMARK 999	UNP P15121

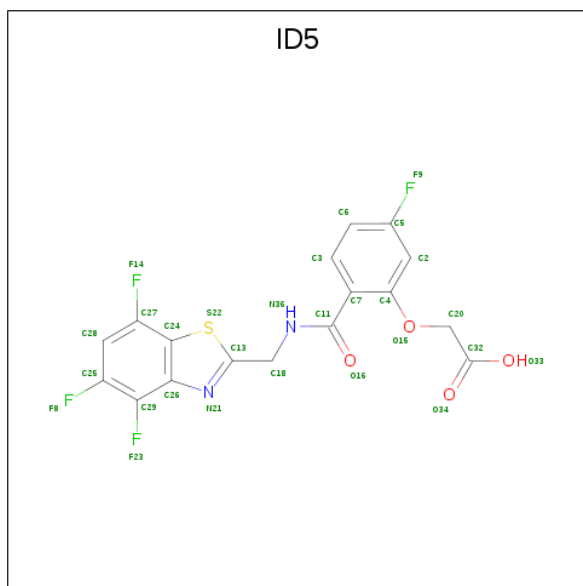
- Molecule 2 is NADP NICOTINAMIDE-ADENINE-DINUCLEOTIDE PHOSPHATE (three-letter code: NAP) (formula: C<sub>21</sub>H<sub>28</sub>N<sub>7</sub>O<sub>17</sub>P<sub>3</sub>).



Mol	Chain	Residues	Atoms					ZeroOcc	AltConf
			Total	C	N	O	P		
2	A	1	48	21	7	17	3	0	0

- Molecule 3 is [5-FLUORO-2-((4,5,7-TRIFLUORO-1,3-BENZOTHAZOL-2-YL)METHYL)AMINO}CARBOXYL)PHENOXY]ACETIC ACID (three-letter code: ID5) (formula:

C<sub>17</sub>H<sub>10</sub>F<sub>4</sub>N<sub>2</sub>O<sub>4</sub>S).



Mol	Chain	Residues	Atoms					ZeroOcc	AltConf	
			Total	C	F	N	O			S
3	A	1	32	19	4	2	6	1	0	1

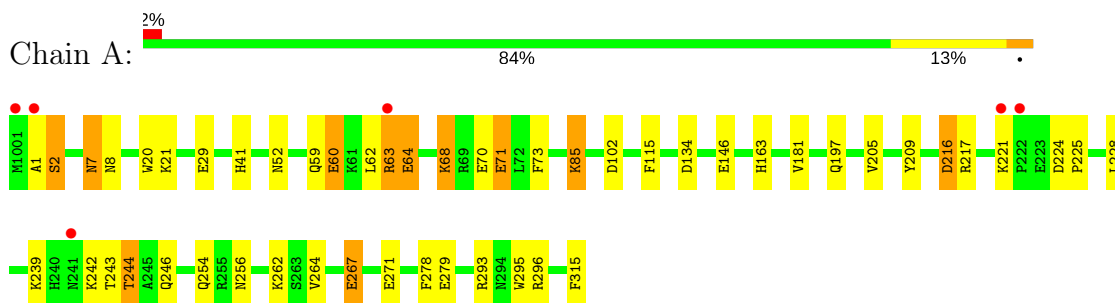
- Molecule 4 is water.

Mol	Chain	Residues	Atoms		ZeroOcc	AltConf
4	A	355	Total	O	0	23
			355	355		

### 3 Residue-property plots [i](#)

These plots are drawn for all protein, RNA and DNA chains in the entry. The first graphic for a chain summarises the proportions of the various outlier classes displayed in the second graphic. The second graphic shows the sequence view annotated by issues in geometry and electron density. Residues are color-coded according to the number of geometric quality criteria for which they contain at least one outlier: green = 0, yellow = 1, orange = 2 and red = 3 or more. A red dot above a residue indicates a poor fit to the electron density ( $RSRZ > 2$ ). Stretches of 2 or more consecutive residues without any outlier are shown as a green connector. Residues present in the sample, but not in the model, are shown in grey.

- Molecule 1: Aldose reductase



## 4 Data and refinement statistics

Property	Value	Source
Space group	P 1	Depositor
Cell constants a, b, c, $\alpha$ , $\beta$ , $\gamma$	47.06Å 47.52Å 40.03Å 67.32° 76.79° 75.82°	Depositor
Resolution (Å)	10.00 – 1.05 24.28 – 1.00	Depositor EDS
% Data completeness (in resolution range)	93.8 (10.00-1.05) 88.0 (24.28-1.00)	Depositor EDS
$R_{merge}$	(Not available)	Depositor
$R_{sym}$	0.04	Depositor
$\langle I/\sigma(I) \rangle$ <sup>1</sup>	0.82 (at 1.00Å)	Xtrriage
Refinement program	SHELXL-97	Depositor
R, $R_{free}$	0.108 , 0.133 0.118 , 0.117	Depositor DCC
$R_{free}$ test set	4579 reflections (3.01%)	wwPDB-VP
Wilson B-factor (Å <sup>2</sup> )	8.2	Xtrriage
Anisotropy	0.511	Xtrriage
Bulk solvent $k_{sol}$ (e/Å <sup>3</sup> ), $B_{sol}$ (Å <sup>2</sup> )	0.34 , 55.4	EDS
L-test for twinning <sup>2</sup>	$\langle  L  \rangle = 0.50$ , $\langle L^2 \rangle = 0.33$	Xtrriage
Estimated twinning fraction	No twinning to report.	Xtrriage
$F_o, F_c$ correlation	0.98	EDS
Total number of atoms	3222	wwPDB-VP
Average B, all atoms (Å <sup>2</sup> )	14.0	wwPDB-VP

Xtrriage's analysis on translational NCS is as follows: *The largest off-origin peak in the Patterson function is 8.37% of the height of the origin peak. No significant pseudotranslation is detected.*

<sup>1</sup>Intensities estimated from amplitudes.

<sup>2</sup>Theoretical values of  $\langle |L| \rangle$ ,  $\langle L^2 \rangle$  for acentric reflections are 0.5, 0.333 respectively for untwinned datasets, and 0.375, 0.2 for perfectly twinned datasets.

## 5 Model quality i

### 5.1 Standard geometry i

Bond lengths and bond angles in the following residue types are not validated in this section: NAP, ID5

The Z score for a bond length (or angle) is the number of standard deviations the observed value is removed from the expected value. A bond length (or angle) with  $|Z| > 5$  is considered an outlier worth inspection. RMSZ is the root-mean-square of all Z scores of the bond lengths (or angles).

Mol	Chain	Bond lengths		Bond angles	
		RMSZ	# Z  >5	RMSZ	# Z  >5
1	A	0.80	5/2950 (0.2%)	1.62	48/3998 (1.2%)

All (5) bond length outliers are listed below:

Mol	Chain	Res	Type	Atoms	Z	Observed(Å)	Ideal(Å)
1	A	267[A]	GLU	CD-OE2	7.12	1.33	1.25
1	A	267[B]	GLU	CD-OE2	7.12	1.33	1.25
1	A	267[A]	GLU	CD-OE1	6.24	1.32	1.25
1	A	267[B]	GLU	CD-OE1	6.24	1.32	1.25
1	A	216	ASP	CG-OD1	5.05	1.36	1.25

All (48) bond angle outliers are listed below:

Mol	Chain	Res	Type	Atoms	Z	Observed(°)	Ideal(°)
1	A	63[A]	ARG	CD-NE-CZ	35.25	172.95	123.60
1	A	63[B]	ARG	CD-NE-CZ	35.25	172.95	123.60
1	A	293[A]	ARG	CD-NE-CZ	21.41	153.57	123.60
1	A	71[A]	GLU	CG-CD-OE1	13.23	144.77	118.30
1	A	71[B]	GLU	CG-CD-OE1	13.23	144.77	118.30
1	A	71[A]	GLU	OE1-CD-OE2	-12.99	107.71	123.30
1	A	71[B]	GLU	OE1-CD-OE2	-12.99	107.71	123.30
1	A	216	ASP	CB-CG-OD2	11.55	128.70	118.30
1	A	267[A]	GLU	OE1-CD-OE2	11.06	136.57	123.30
1	A	267[B]	GLU	OE1-CD-OE2	11.06	136.57	123.30
1	A	63[A]	ARG	NE-CZ-NH2	9.70	125.15	120.30
1	A	63[B]	ARG	NE-CZ-NH2	9.70	125.15	120.30
1	A	217	ARG	NE-CZ-NH1	8.70	124.65	120.30
1	A	64[A]	GLU	CG-CD-OE1	8.53	135.36	118.30
1	A	64[B]	GLU	CG-CD-OE1	8.53	135.36	118.30
1	A	64[A]	GLU	OE1-CD-OE2	-7.50	114.31	123.30

*Continued on next page...*

Continued from previous page...

Mol	Chain	Res	Type	Atoms	Z	Observed(°)	Ideal(°)
1	A	64[B]	GLU	OE1-CD-OE2	-7.50	114.31	123.30
1	A	1	ALA	O-C-N	-7.12	111.30	122.70
1	A	63[A]	ARG	NH1-CZ-NH2	-7.01	111.69	119.40
1	A	63[B]	ARG	NH1-CZ-NH2	-7.01	111.69	119.40
1	A	296	ARG	NE-CZ-NH1	6.74	123.67	120.30
1	A	102	ASP	CB-CG-OD2	-6.69	112.28	118.30
1	A	60[A]	GLU	OE1-CD-OE2	6.22	130.76	123.30
1	A	60[B]	GLU	OE1-CD-OE2	6.22	130.76	123.30
1	A	63[A]	ARG	CA-CB-CG	6.19	127.01	113.40
1	A	63[B]	ARG	CA-CB-CG	6.19	127.01	113.40
1	A	2	SER	N-CA-CB	6.10	119.65	110.50
1	A	267[A]	GLU	CB-CG-CD	6.06	130.55	114.20
1	A	267[B]	GLU	CB-CG-CD	6.06	130.55	114.20
1	A	115	PHE	CB-CG-CD1	5.88	124.92	120.80
1	A	63[A]	ARG	NE-CZ-NH1	5.71	123.16	120.30
1	A	63[B]	ARG	NE-CZ-NH1	5.71	123.16	120.30
1	A	217	ARG	NE-CZ-NH2	-5.64	117.48	120.30
1	A	146[A]	GLU	CG-CD-OE1	-5.63	107.03	118.30
1	A	244[A]	THR	CA-CB-CG2	5.61	120.26	112.40
1	A	244[B]	THR	CA-CB-CG2	5.61	120.26	112.40
1	A	264	VAL	CG1-CB-CG2	5.61	119.88	110.90
1	A	209	TYR	CA-CB-CG	5.47	123.80	113.40
1	A	267[A]	GLU	CG-CD-OE2	-5.44	107.42	118.30
1	A	267[B]	GLU	CG-CD-OE2	-5.44	107.42	118.30
1	A	216	ASP	CB-CG-OD1	-5.43	113.41	118.30
1	A	71[A]	GLU	CG-CD-OE2	-5.39	107.52	118.30
1	A	71[B]	GLU	CG-CD-OE2	-5.39	107.52	118.30
1	A	64[A]	GLU	CA-C-N	5.37	129.02	117.20
1	A	64[B]	GLU	CA-C-N	5.37	129.02	117.20
1	A	85[A]	LYS	CA-CB-CG	5.25	124.95	113.40
1	A	134[A]	ASP	CB-CG-OD2	-5.19	113.62	118.30
1	A	134[B]	ASP	CB-CG-OD2	-5.19	113.62	118.30

There are no chirality outliers.

There are no planarity outliers.

## 5.2 Too-close contacts [\(i\)](#)

In the following table, the Non-H and H(model) columns list the number of non-hydrogen atoms and hydrogen atoms in the chain respectively. The H(added) column lists the number of hydrogen atoms added and optimized by MolProbity. The Clashes column lists the number of clashes within the asymmetric unit, whereas Symm-Clashes lists symmetry related clashes.



Mol	Chain	Non-H	H(model)	H(added)	Clashes	Symm-Clashes
1	A	2787	0	2738	32	0
2	A	48	0	25	1	0
3	A	32	0	4	4	0
4	A	355	0	0	10	0
All	All	3222	0	2767	33	0

The all-atom clashscore is defined as the number of clashes found per 1000 atoms (including hydrogen atoms). The all-atom clashscore for this structure is 6.

All (33) close contacts within the same asymmetric unit are listed below, sorted by their clash magnitude.

Atom-1	Atom-2	Interatomic distance (Å)	Clash overlap (Å)
1:A:20:TRP:CE3	1:A:21[B]:LYS:HE3	2.23	0.74
1:A:52[A]:ASN:HB3	4:A:4035[A]:HOH:O	1.88	0.72
1:A:254:GLN:OE1	1:A:279[A]:GLU:HG3	1.91	0.70
1:A:70[A]:GLU:HG2	4:A:3085:HOH:O	1.92	0.69
1:A:267[A]:GLU:HG3	4:A:3227:HOH:O	1.95	0.66
1:A:20:TRP:CZ3	1:A:21[B]:LYS:HE3	2.32	0.64
1:A:243:THR:HG21	1:A:271[B]:GLU:OE1	1.97	0.64
1:A:20:TRP:CD2	3:A:320[A]:ID5:H202	2.31	0.64
1:A:163:HIS:HE1	4:A:3506:HOH:O	1.84	0.61
1:A:163:HIS:HD2	1:A:315:PHE:O	1.84	0.59
1:A:242:LYS:HE2	1:A:278:PHE:CD1	2.37	0.59
1:A:59[A]:GLN:O	1:A:62[A]:LEU:HB2	2.03	0.59
1:A:225:PRO:HD2	1:A:295:TRP:CZ2	2.38	0.59
1:A:244[B]:THR:HG22	4:A:3123:HOH:O	2.03	0.58
1:A:246:GLN:NE2	1:A:271[B]:GLU:HG2	2.26	0.51
1:A:20:TRP:CE3	3:A:320[A]:ID5:H202	2.46	0.50
1:A:262:LYS:O	2:A:318:NAP:H8A	2.12	0.50
1:A:7[A]:ASN:HD22	1:A:8:ASN:N	2.10	0.49
1:A:68[B]:LYS:HG3	4:A:3085:HOH:O	2.13	0.48
1:A:60[A]:GLU:O	1:A:63[A]:ARG:N	2.49	0.46
1:A:29[B]:GLU:HG2	4:A:3326:HOH:O	2.16	0.46
1:A:181:VAL:HA	1:A:205:VAL:O	2.16	0.45
1:A:221[B]:LYS:HD3	1:A:224:ASP:OD1	2.16	0.45
1:A:256[B]:ASN:ND2	4:A:3205:HOH:O	2.50	0.45
1:A:239:LYS:NZ	4:A:3230:HOH:O	2.50	0.44
1:A:228:LEU:O	1:A:244[B]:THR:HG21	2.18	0.44
1:A:60[A]:GLU:OE1	1:A:64[A]:GLU:OE2	2.36	0.44
1:A:20:TRP:CE2	3:A:320[A]:ID5:H202	2.54	0.42
1:A:71[A]:GLU:HG2	4:A:3443:HOH:O	2.20	0.42
1:A:21[B]:LYS:HE2	1:A:216:ASP:OD1	2.20	0.42

*Continued on next page...*

*Continued from previous page...*

Atom-1	Atom-2	Interatomic distance (Å)	Clash overlap (Å)
1:A:41:HIS:HA	1:A:73:PHE:O	2.20	0.40
1:A:7[A]:ASN:HD22	1:A:7[A]:ASN:C	2.25	0.40

There are no symmetry-related clashes.

## 5.3 Torsion angles [i](#)

### 5.3.1 Protein backbone [i](#)

In the following table, the Percentiles column shows the percent Ramachandran outliers of the chain as a percentile score with respect to all X-ray entries followed by that with respect to entries of similar resolution.

The Analysed column shows the number of residues for which the backbone conformation was analysed, and the total number of residues.

Mol	Chain	Analysed	Favoured	Allowed	Outliers	Percentiles
1	A	357/316 (113%)	351 (98%)	6 (2%)	0	100 100

There are no Ramachandran outliers to report.

### 5.3.2 Protein sidechains [i](#)

In the following table, the Percentiles column shows the percent sidechain outliers of the chain as a percentile score with respect to all X-ray entries followed by that with respect to entries of similar resolution.

The Analysed column shows the number of residues for which the sidechain conformation was analysed, and the total number of residues.

Mol	Chain	Analysed	Rotameric	Outliers	Percentiles
1	A	322/281 (115%)	314 (98%)	8 (2%)	50 13

All (8) residues with a non-rotameric sidechain are listed below:

Mol	Chain	Res	Type
1	A	2	SER
1	A	7[A]	ASN
1	A	7[B]	ASN
1	A	68[A]	LYS

*Continued on next page...*

*Continued from previous page...*

Mol	Chain	Res	Type
1	A	68[B]	LYS
1	A	85[A]	LYS
1	A	197[A]	GLN
1	A	197[B]	GLN

Some sidechains can be flipped to improve hydrogen bonding and reduce clashes. All (3) such sidechains are listed below:

Mol	Chain	Res	Type
1	A	52[A]	ASN
1	A	136	ASN
1	A	163	HIS

### 5.3.3 RNA [i](#)

There are no RNA molecules in this entry.

## 5.4 Non-standard residues in protein, DNA, RNA chains [i](#)

There are no non-standard protein/DNA/RNA residues in this entry.

## 5.5 Carbohydrates [i](#)

There are no carbohydrates in this entry.

## 5.6 Ligand geometry [i](#)

3 ligands are modelled in this entry.

In the following table, the Counts columns list the number of bonds (or angles) for which Mogul statistics could be retrieved, the number of bonds (or angles) that are observed in the model and the number of bonds (or angles) that are defined in the Chemical Component Dictionary. The Link column lists molecule types, if any, to which the group is linked. The Z score for a bond length (or angle) is the number of standard deviations the observed value is removed from the expected value. A bond length (or angle) with  $|Z| > 2$  is considered an outlier worth inspection. RMSZ is the root-mean-square of all Z scores of the bond lengths (or angles).

Mol	Type	Chain	Res	Link	Bond lengths			Bond angles		
					Counts	RMSZ	$\# Z  > 2$	Counts	RMSZ	$\# Z  > 2$
2	NAP	A	318	-	44,52,52	0.84	1 (2%)	53,80,80	0.98	1 (1%)

Mol	Type	Chain	Res	Link	Bond lengths			Bond angles		
					Counts	RMSZ	# Z  > 2	Counts	RMSZ	# Z  > 2
3	ID5	A	320[A]	-	24,30,30	0.75	0	26,43,43	1.17	2 (7%)
3	ID5	A	320[B]	-	24,30,30	0.77	0	26,43,43	1.15	2 (7%)

In the following table, the Chirals column lists the number of chiral outliers, the number of chiral centers analysed, the number of these observed in the model and the number defined in the Chemical Component Dictionary. Similar counts are reported in the Torsion and Rings columns. '-' means no outliers of that kind were identified.

Mol	Type	Chain	Res	Link	Chirals	Torsions	Rings
2	NAP	A	318	-	-	0/27/67/67	0/5/5/5
3	ID5	A	320[A]	-	-	0/10/14/14	0/3/3/3
3	ID5	A	320[B]	-	-	0/10/14/14	0/3/3/3

All (1) bond length outliers are listed below:

Mol	Chain	Res	Type	Atoms	Z	Observed(Å)	Ideal(Å)
2	A	318	NAP	C6N-N1N	2.48	1.41	1.35

All (5) bond angle outliers are listed below:

Mol	Chain	Res	Type	Atoms	Z	Observed(°)	Ideal(°)
2	A	318	NAP	C5A-C6A-N6A	2.21	124.97	120.47
3	A	320[A]	ID5	C4-C2-C5	2.58	121.60	116.29
3	A	320[B]	ID5	C4-C2-C5	2.58	121.60	116.29
3	A	320[A]	ID5	C27-C24-S22	3.11	129.98	124.70
3	A	320[B]	ID5	C27-C24-S22	3.11	129.98	124.70

There are no chirality outliers.

There are no torsion outliers.

There are no ring outliers.

3 monomers are involved in 5 short contacts:

Mol	Chain	Res	Type	Clashes	Symm-Clashes
2	A	318	NAP	1	0
3	A	320[A]	ID5	3	0
3	A	320[B]	ID5	1	0

## 5.7 Other polymers [i](#)

There are no such residues in this entry.

## 5.8 Polymer linkage issues [i](#)

There are no chain breaks in this entry.

## 6 Fit of model and data [i](#)

### 6.1 Protein, DNA and RNA chains [i](#)

In the following table, the column labelled ‘#RSRZ> 2’ contains the number (and percentage) of RSRZ outliers, followed by percent RSRZ outliers for the chain as percentile scores relative to all X-ray entries and entries of similar resolution. The OWAB column contains the minimum, median, 95<sup>th</sup> percentile and maximum values of the occupancy-weighted average B-factor per residue. The column labelled ‘Q< 0.9’ lists the number of (and percentage) of residues with an average occupancy less than 0.9.

Mol	Chain	Analysed	<RSRZ>	#RSRZ>2	OWAB(Å <sup>2</sup> )	Q<0.9
1	A	316/316 (100%)	-0.20	6 (1%) 66 59	6, 11, 26, 55	13 (4%)

All (6) RSRZ outliers are listed below:

Mol	Chain	Res	Type	RSRZ
1	A	1	ALA	7.1
1	A	1001	MET	4.3
1	A	221[A]	LYS	3.0
1	A	63[A]	ARG	2.4
1	A	222	PRO	2.2
1	A	241[A]	ASN	2.0

### 6.2 Non-standard residues in protein, DNA, RNA chains [i](#)

There are no non-standard protein/DNA/RNA residues in this entry.

### 6.3 Carbohydrates [i](#)

There are no carbohydrates in this entry.

### 6.4 Ligands [i](#)

In the following table, the Atoms column lists the number of modelled atoms in the group and the number defined in the chemical component dictionary. The B-factors column lists the minimum, median, 95<sup>th</sup> percentile and maximum values of B factors of atoms in the group. The column labelled ‘Q< 0.9’ lists the number of atoms with occupancy less than 0.9.

Mol	Type	Chain	Res	Atoms	RSCC	RSR	B-factors(Å <sup>2</sup> )	Q<0.9
2	NAP	A	318	48/48	0.99	0.05	4,6,10,11	0

*Continued on next page...*

*Continued from previous page...*

Mol	Type	Chain	Res	Atoms	RSCC	RSR	B-factors( $\text{\AA}^2$ )	Q<0.9
3	ID5	A	320[A]	28/28	0.99	0.05	6,7,9,9	4
3	ID5	A	320[B]	28/28	0.99	0.05	6,7,9,9	4

## 6.5 Other polymers [i](#)

There are no such residues in this entry.