



# Full wwPDB X-ray Structure Validation Report ⓘ

Feb 5, 2024 – 03:51 AM EST

PDB ID : 1T5D  
Title : 4-Chlorobenzoyl-CoA Ligase/Synthetase bound to 4-chlorobenzoate  
Authors : Gulick, A.M.; Lu, X.; Dunaway-Mariano, D.  
Deposited on : 2004-05-04  
Resolution : 2.21 Å(reported)

This is a Full wwPDB X-ray Structure Validation Report for a publicly released PDB entry.

We welcome your comments at [validation@mail.wwpdb.org](mailto:validation@mail.wwpdb.org)

A user guide is available at

<https://www.wwpdb.org/validation/2017/XrayValidationReportHelp>

with specific help available everywhere you see the ⓘ symbol.

The types of validation reports are described at

<http://www.wwpdb.org/validation/2017/FAQs#types>.

---

The following versions of software and data (see [references ⓘ](#)) were used in the production of this report:

MolProbity : 4.02b-467  
Mogul : 1.8.5 (274361), CSD as541be (2020)  
Xtrriage (Phenix) : 1.13  
EDS : 2.36  
Percentile statistics : 20191225.v01 (using entries in the PDB archive December 25th 2019)  
Refmac : 5.8.0158  
CCP4 : 7.0.044 (Gargrove)  
Ideal geometry (proteins) : Engh & Huber (2001)  
Ideal geometry (DNA, RNA) : Parkinson et al. (1996)  
Validation Pipeline (wwPDB-VP) : 2.36

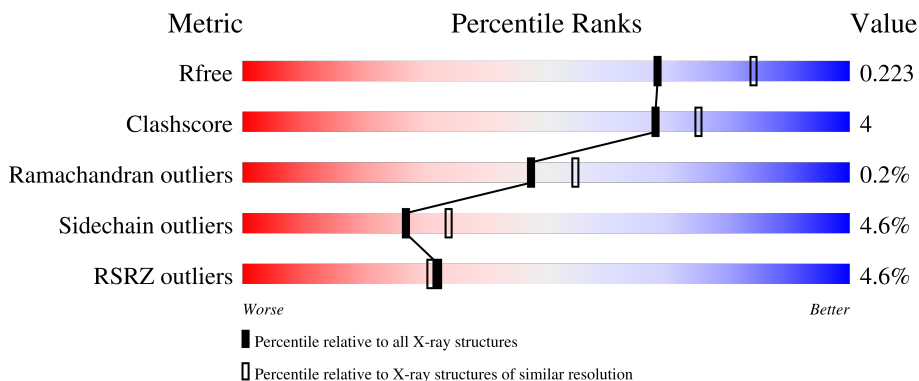
# 1 Overall quality at a glance

The following experimental techniques were used to determine the structure:

*X-RAY DIFFRACTION*

The reported resolution of this entry is 2.21 Å.

Percentile scores (ranging between 0-100) for global validation metrics of the entry are shown in the following graphic. The table shows the number of entries on which the scores are based.



Metric	Whole archive (#Entries)	Similar resolution (#Entries, resolution range(Å))
$R_{free}$	130704	4898 (2.20-2.20)
Clashscore	141614	5594 (2.20-2.20)
Ramachandran outliers	138981	5503 (2.20-2.20)
Sidechain outliers	138945	5504 (2.20-2.20)
RSRZ outliers	127900	4800 (2.20-2.20)

The table below summarises the geometric issues observed across the polymeric chains and their fit to the electron density. The red, orange, yellow and green segments of the lower bar indicate the fraction of residues that contain outliers for  $\geq 3$ , 2, 1 and 0 types of geometric quality criteria respectively. A grey segment represents the fraction of residues that are not modelled. The numeric value for each fraction is indicated below the corresponding segment, with a dot representing fractions  $\leq 5\%$ . The upper red bar (where present) indicates the fraction of residues that have poor fit to the electron density. The numeric value is given above the bar.

Mol	Chain	Length	Quality of chain
1	X	504	

## 2 Entry composition [i](#)

There are 4 unique types of molecules in this entry. The entry contains 4120 atoms, of which 0 are hydrogens and 0 are deuteriums.

In the tables below, the ZeroOcc column contains the number of atoms modelled with zero occupancy, the AltConf column contains the number of residues with at least one atom in alternate conformation and the Trace column contains the number of residues modelled with at most 2 atoms.

- Molecule 1 is a protein called 4-chlorobenzoyl CoA ligase.

Mol	Chain	Residues	Atoms					ZeroOcc	AltConf	Trace
			Total	C	N	O	S			
1	X	502	3784	2392	679	700	13	0	0	0

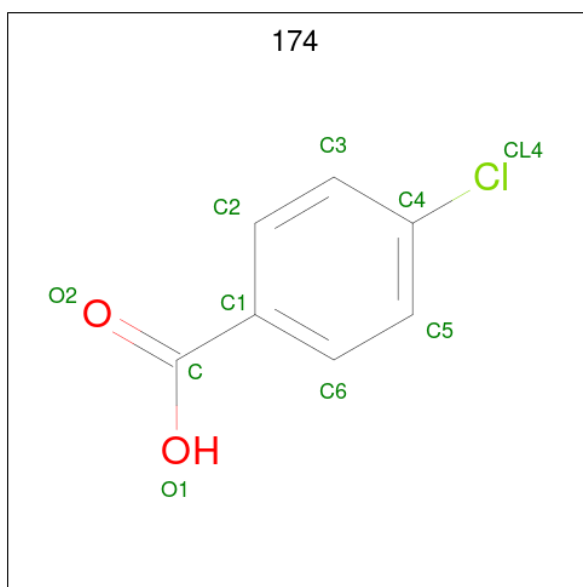
There are 11 discrepancies between the modelled and reference sequences:

Chain	Residue	Modelled	Actual	Comment	Reference
X	43	ALA	-	SEE REMARK 999	UNP Q8GN86
X	45	ARG	GLY	SEE REMARK 999	UNP Q8GN86
X	78	GLY	-	SEE REMARK 999	UNP Q8GN86
X	151	GLU	ASP	SEE REMARK 999	UNP Q8GN86
X	152	PRO	ALA	SEE REMARK 999	UNP Q8GN86
X	259	ALA	-	SEE REMARK 999	UNP Q8GN86
X	317	GLN	HIS	SEE REMARK 999	UNP Q8GN86
X	318	PRO	ALA	SEE REMARK 999	UNP Q8GN86
X	428	THR	ALA	SEE REMARK 999	UNP Q8GN86
X	497	GLN	HIS	SEE REMARK 999	UNP Q8GN86
X	498	LEU	VAL	SEE REMARK 999	UNP Q8GN86

- Molecule 2 is CALCIUM ION (three-letter code: CA) (formula: Ca).

Mol	Chain	Residues	Atoms		ZeroOcc	AltConf
2	X	1	Total	Ca	0	0
			1	1		

- Molecule 3 is 4-CHLORO-BENZOIC ACID (three-letter code: 174) (formula: C<sub>7</sub>H<sub>5</sub>ClO<sub>2</sub>).



Mol	Chain	Residues	Atoms				ZeroOcc	AltConf
			Total	C	Cl	O		
3	X	1	10	7	1	2	0	0

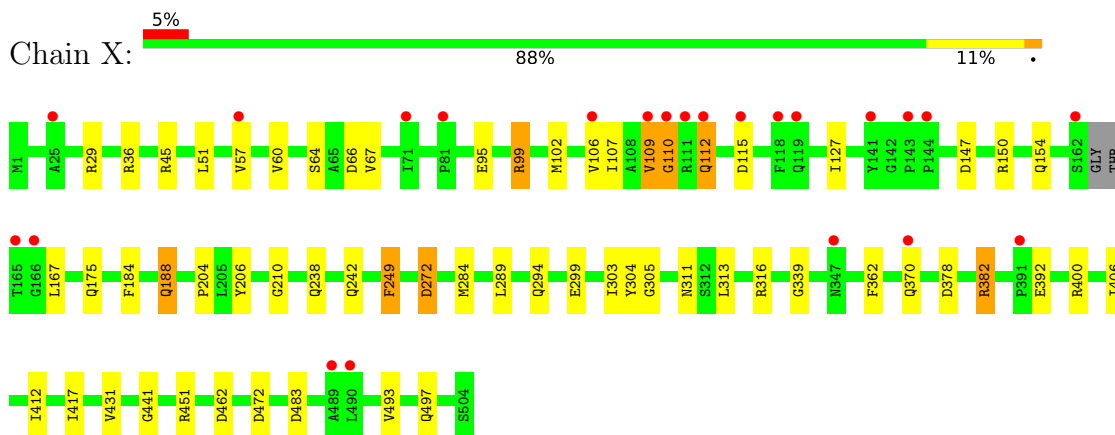
- Molecule 4 is water.

Mol	Chain	Residues	Atoms		ZeroOcc	AltConf
			Total	O		
4	X	325	325	325	0	0

### 3 Residue-property plots [i](#)

These plots are drawn for all protein, RNA, DNA and oligosaccharide chains in the entry. The first graphic for a chain summarises the proportions of the various outlier classes displayed in the second graphic. The second graphic shows the sequence view annotated by issues in geometry and electron density. Residues are color-coded according to the number of geometric quality criteria for which they contain at least one outlier: green = 0, yellow = 1, orange = 2 and red = 3 or more. A red dot above a residue indicates a poor fit to the electron density ( $RSRZ > 2$ ). Stretches of 2 or more consecutive residues without any outlier are shown as a green connector. Residues present in the sample, but not in the model, are shown in grey.

- Molecule 1: 4-chlorobenzoyl CoA ligase



## 4 Data and refinement statistics

Property	Value	Source
Space group	P 32 2 1	Depositor
Cell constants a, b, c, $\alpha$ , $\beta$ , $\gamma$	124.98Å 124.98Å 69.00Å 90.00° 90.00° 120.00°	Depositor
Resolution (Å)	25.41 – 2.21 24.83 – 2.21	Depositor EDS
% Data completeness (in resolution range)	96.0 (25.41-2.21) 96.0 (24.83-2.21)	Depositor EDS
$R_{merge}$	0.07	Depositor
$R_{sym}$	(Not available)	Depositor
$\langle I/\sigma(I) \rangle$ <sup>1</sup>	1.67 (at 2.22Å)	Xtrriage
Refinement program	REFMAC 5.1.24	Depositor
R, $R_{free}$	0.178 , 0.223 0.180 , 0.223	Depositor DCC
$R_{free}$ test set	1496 reflections (4.94%)	wwPDB-VP
Wilson B-factor (Å <sup>2</sup> )	37.3	Xtrriage
Anisotropy	0.385	Xtrriage
Bulk solvent $k_{sol}$ (e/Å <sup>3</sup> ), $B_{sol}$ (Å <sup>2</sup> )	0.33 , 29.6	EDS
L-test for twinning <sup>2</sup>	$\langle  L  \rangle = 0.49$ , $\langle L^2 \rangle = 0.32$	Xtrriage
Estimated twinning fraction	0.028 for -h,-k,l	Xtrriage
$F_o, F_c$ correlation	0.96	EDS
Total number of atoms	4120	wwPDB-VP
Average B, all atoms (Å <sup>2</sup> )	29.0	wwPDB-VP

Xtrriage's analysis on translational NCS is as follows: *The largest off-origin peak in the Patterson function is 3.39% of the height of the origin peak. No significant pseudotranslation is detected.*

<sup>1</sup>Intensities estimated from amplitudes.

<sup>2</sup>Theoretical values of  $\langle |L| \rangle$ ,  $\langle L^2 \rangle$  for acentric reflections are 0.5, 0.333 respectively for untwinned datasets, and 0.375, 0.2 for perfectly twinned datasets.

## 5 Model quality [i](#)

### 5.1 Standard geometry [i](#)

Bond lengths and bond angles in the following residue types are not validated in this section: 174, CA

The Z score for a bond length (or angle) is the number of standard deviations the observed value is removed from the expected value. A bond length (or angle) with  $|Z| > 5$  is considered an outlier worth inspection. RMSZ is the root-mean-square of all Z scores of the bond lengths (or angles).

Mol	Chain	Bond lengths		Bond angles	
		RMSZ	# Z  >5	RMSZ	# Z  >5
1	X	0.52	0/3855	0.74	10/5250 (0.2%)

There are no bond length outliers.

All (10) bond angle outliers are listed below:

Mol	Chain	Res	Type	Atoms	Z	Observed(°)	Ideal(°)
1	X	147	ASP	CB-CG-OD2	6.80	124.42	118.30
1	X	483	ASP	CB-CG-OD2	6.22	123.90	118.30
1	X	272	ASP	CB-CG-OD2	6.17	123.86	118.30
1	X	472	ASP	CB-CG-OD2	5.54	123.29	118.30
1	X	378	ASP	CB-CG-OD2	5.45	123.20	118.30
1	X	382	ARG	NE-CZ-NH2	-5.35	117.62	120.30
1	X	66	ASP	CB-CG-OD2	5.21	122.99	118.30
1	X	110	GLY	N-CA-C	-5.17	100.18	113.10
1	X	462	ASP	CB-CG-OD2	5.15	122.94	118.30
1	X	115	ASP	CB-CG-OD2	5.04	122.84	118.30

There are no chirality outliers.

There are no planarity outliers.

### 5.2 Too-close contacts [i](#)

In the following table, the Non-H and H(model) columns list the number of non-hydrogen atoms and hydrogen atoms in the chain respectively. The H(added) column lists the number of hydrogen atoms added and optimized by MolProbity. The Clashes column lists the number of clashes within the asymmetric unit, whereas Symm-Clashes lists symmetry-related clashes.

Mol	Chain	Non-H	H(model)	H(added)	Clashes	Symm-Clashes
1	X	3784	0	3814	29	0

*Continued on next page...*

*Continued from previous page...*

Mol	Chain	Non-H	H(model)	H(added)	Clashes	Symm-Clashes
2	X	1	0	0	0	0
3	X	10	0	4	1	0
4	X	325	0	0	2	0
All	All	4120	0	3818	29	0

The all-atom clashscore is defined as the number of clashes found per 1000 atoms (including hydrogen atoms). The all-atom clashscore for this structure is 4.

All (29) close contacts within the same asymmetric unit are listed below, sorted by their clash magnitude.

Atom-1	Atom-2	Interatomic distance (Å)	Clash overlap (Å)
1:X:112:GLN:H	1:X:112:GLN:NE2	1.69	0.89
1:X:112:GLN:HE21	1:X:112:GLN:N	1.72	0.88
1:X:112:GLN:H	1:X:112:GLN:HE21	0.89	0.87
1:X:284:MET:HE1	1:X:289:LEU:HD13	1.58	0.85
1:X:299:GLU:OE2	1:X:316:ARG:HD2	1.84	0.77
1:X:249:PHE:HZ	1:X:303:ILE:HD11	1.59	0.67
1:X:188:GLN:HE21	1:X:311:ASN:HD22	1.50	0.60
1:X:60:VAL:HB	1:X:107:ILE:HG22	1.87	0.57
1:X:249:PHE:CZ	1:X:303:ILE:HD11	2.40	0.55
1:X:109:VAL:HG13	1:X:110:GLY:H	1.71	0.54
1:X:339:GLY:O	1:X:382:ARG:NH2	2.31	0.53
1:X:304:TYR:HB3	1:X:313:LEU:HB2	1.90	0.53
1:X:109:VAL:CG1	1:X:110:GLY:N	2.75	0.49
1:X:412:ILE:HG23	1:X:417:ILE:HD11	1.96	0.48
1:X:305:GLY:HA3	3:X:998:174:C4	2.44	0.48
1:X:204:PRO:O	1:X:210:GLY:HA3	2.14	0.47
1:X:188:GLN:HE21	1:X:311:ASN:ND2	2.12	0.46
1:X:431:VAL:HG21	1:X:493:VAL:HG11	1.97	0.46
1:X:204:PRO:HB3	1:X:206:TYR:CZ	2.51	0.46
1:X:95:GLU:O	1:X:99:ARG:HB2	2.15	0.45
1:X:64:SER:O	1:X:67:VAL:HG12	2.17	0.45
1:X:109:VAL:CG1	1:X:110:GLY:H	2.31	0.44
1:X:150:ARG:HA	1:X:154:GLN:HE22	1.83	0.44
1:X:441:GLY:HA3	4:X:1092:HOH:O	2.19	0.42
1:X:106:VAL:HA	1:X:127:ILE:O	2.20	0.42
1:X:36:ARG:HA	1:X:36:ARG:HD2	1.91	0.41
1:X:51:LEU:HD21	1:X:57:VAL:HG21	2.03	0.40
1:X:400:ARG:HD3	4:X:1214:HOH:O	2.20	0.40
1:X:238:GLN:O	1:X:242:GLN:NE2	2.54	0.40



There are no symmetry-related clashes.

## 5.3 Torsion angles [i](#)

### 5.3.1 Protein backbone [i](#)

In the following table, the Percentiles column shows the percent Ramachandran outliers of the chain as a percentile score with respect to all X-ray entries followed by that with respect to entries of similar resolution.

The Analysed column shows the number of residues for which the backbone conformation was analysed, and the total number of residues.

Mol	Chain	Analysed	Favoured	Allowed	Outliers	Percentiles
1	X	498/504 (99%)	482 (97%)	15 (3%)	1 (0%)	47 55

All (1) Ramachandran outliers are listed below:

Mol	Chain	Res	Type
1	X	109	VAL

### 5.3.2 Protein sidechains [i](#)

In the following table, the Percentiles column shows the percent sidechain outliers of the chain as a percentile score with respect to all X-ray entries followed by that with respect to entries of similar resolution.

The Analysed column shows the number of residues for which the sidechain conformation was analysed, and the total number of residues.

Mol	Chain	Analysed	Rotameric	Outliers	Percentiles
1	X	392/400 (98%)	374 (95%)	18 (5%)	27 34

All (18) residues with a non-rotameric sidechain are listed below:

Mol	Chain	Res	Type
1	X	29	ARG
1	X	45	ARG
1	X	99	ARG
1	X	102	MET
1	X	112	GLN
1	X	167	LEU
1	X	175	GLN

*Continued on next page...*

*Continued from previous page...*

Mol	Chain	Res	Type
1	X	184	PHE
1	X	188	GLN
1	X	249	PHE
1	X	272	ASP
1	X	294	GLN
1	X	362	PHE
1	X	370	GLN
1	X	392	GLU
1	X	406	ILE
1	X	451	ARG
1	X	497	GLN

Sometimes sidechains can be flipped to improve hydrogen bonding and reduce clashes. All (9) such sidechains are listed below:

Mol	Chain	Res	Type
1	X	54	GLN
1	X	112	GLN
1	X	154	GLN
1	X	175	GLN
1	X	242	GLN
1	X	244	GLN
1	X	294	GLN
1	X	311	ASN
1	X	501	GLN

### 5.3.3 RNA [i](#)

There are no RNA molecules in this entry.

### 5.4 Non-standard residues in protein, DNA, RNA chains [i](#)

There are no non-standard protein/DNA/RNA residues in this entry.

### 5.5 Carbohydrates [i](#)

There are no monosaccharides in this entry.

## 5.6 Ligand geometry

Of 2 ligands modelled in this entry, 1 is monoatomic - leaving 1 for Mogul analysis.

In the following table, the Counts columns list the number of bonds (or angles) for which Mogul statistics could be retrieved, the number of bonds (or angles) that are observed in the model and the number of bonds (or angles) that are defined in the Chemical Component Dictionary. The Link column lists molecule types, if any, to which the group is linked. The Z score for a bond length (or angle) is the number of standard deviations the observed value is removed from the expected value. A bond length (or angle) with  $|Z| > 2$  is considered an outlier worth inspection. RMSZ is the root-mean-square of all Z scores of the bond lengths (or angles).

Mol	Type	Chain	Res	Link	Bond lengths			Bond angles		
					Counts	RMSZ	# Z  > 2	Counts	RMSZ	# Z  > 2
3	174	X	998	-	10,10,10	1.27	1 (10%)	13,13,13	1.43	3 (23%)

In the following table, the Chirals column lists the number of chiral outliers, the number of chiral centers analysed, the number of these observed in the model and the number defined in the Chemical Component Dictionary. Similar counts are reported in the Torsion and Rings columns. '-' means no outliers of that kind were identified.

Mol	Type	Chain	Res	Link	Chirals	Torsions	Rings
3	174	X	998	-	-	0/4/4/4	0/1/1/1

All (1) bond length outliers are listed below:

Mol	Chain	Res	Type	Atoms	Z	Observed(Å)	Ideal(Å)
3	X	998	174	C4-CL4	2.73	1.80	1.74

All (3) bond angle outliers are listed below:

Mol	Chain	Res	Type	Atoms	Z	Observed(°)	Ideal(°)
3	X	998	174	C3-C4-CL4	2.11	122.65	119.35
3	X	998	174	C6-C1-C	-2.08	116.30	120.39
3	X	998	174	C5-C4-CL4	-2.02	116.20	119.35

There are no chirality outliers.

There are no torsion outliers.

There are no ring outliers.

1 monomer is involved in 1 short contact:

Mol	Chain	Res	Type	Clashes	Symm-Clashes
3	X	998	174	1	0

## 5.7 Other polymers [i](#)

There are no such residues in this entry.

## 5.8 Polymer linkage issues [i](#)

There are no chain breaks in this entry.

## 6 Fit of model and data

### 6.1 Protein, DNA and RNA chains

In the following table, the column labelled ‘#RSRZ > 2’ contains the number (and percentage) of RSRZ outliers, followed by percent RSRZ outliers for the chain as percentile scores relative to all X-ray entries and entries of similar resolution. The OWAB column contains the minimum, median, 95<sup>th</sup> percentile and maximum values of the occupancy-weighted average B-factor per residue. The column labelled ‘Q < 0.9’ lists the number of (and percentage) of residues with an average occupancy less than 0.9.

Mol	Chain	Analysed	<RSRZ>	#RSRZ>2	OWAB(Å <sup>2</sup> )	Q<0.9
1	X	502/504 (99%)	-0.19	23 (4%) 32 31	23, 28, 36, 44	0

All (23) RSRZ outliers are listed below:

Mol	Chain	Res	Type	RSRZ
1	X	118	PHE	5.4
1	X	109	VAL	5.0
1	X	110	GLY	4.9
1	X	347	ASN	4.3
1	X	165	THR	4.3
1	X	162	SER	4.2
1	X	489	ALA	3.6
1	X	71	ILE	3.4
1	X	25	ALA	3.3
1	X	166	GLY	3.0
1	X	115	ASP	2.9
1	X	370	GLN	2.8
1	X	143	PRO	2.7
1	X	57	VAL	2.7
1	X	144	PRO	2.5
1	X	106	VAL	2.5
1	X	111	ARG	2.5
1	X	112	GLN	2.4
1	X	119	GLN	2.4
1	X	391	PRO	2.4
1	X	81	PRO	2.4
1	X	490	LEU	2.2
1	X	141	TYR	2.1

## 6.2 Non-standard residues in protein, DNA, RNA chains [i](#)

There are no non-standard protein/DNA/RNA residues in this entry.

## 6.3 Carbohydrates [i](#)

There are no monosaccharides in this entry.

## 6.4 Ligands [i](#)

In the following table, the Atoms column lists the number of modelled atoms in the group and the number defined in the chemical component dictionary. The B-factors column lists the minimum, median, 95<sup>th</sup> percentile and maximum values of B factors of atoms in the group. The column labelled 'Q< 0.9' lists the number of atoms with occupancy less than 0.9.

Mol	Type	Chain	Res	Atoms	RSCC	RSR	B-factors(Å <sup>2</sup> )	Q<0.9
3	174	X	998	10/10	0.88	0.14	43,45,47,49	0
2	CA	X	999	1/1	0.99	0.08	46,46,46,46	0

## 6.5 Other polymers [i](#)

There are no such residues in this entry.