



## Full wwPDB X-ray Structure Validation Report ⓘ

Aug 15, 2023 – 06:08 AM EDT

PDB ID : 1T64  
Title : Crystal Structure of human HDAC8 complexed with Trichostatin A  
Authors : Somoza, J.R.; Skene, R.J.; Katz, B.A.; Mol, C.; Ho, J.D.; Jennings, A.J.;  
Luong, C.; Arvai, A.; Buggy, J.J.; Chi, E.; Tang, J.; Sang, B.-C.; Verner, E.;  
Wynands, R.; Leahy, E.M.; Dougan, D.R.; Snell, G.; Navre, M.; Knuth, M.W.;  
Swanson, R.V.; McRee, D.E.; Tari, L.W.  
Deposited on : 2004-05-05  
Resolution : 1.90 Å(reported)

This is a Full wwPDB X-ray Structure Validation Report for a publicly released PDB entry.

We welcome your comments at [validation@mail.wwpdb.org](mailto:validation@mail.wwpdb.org)

A user guide is available at

<https://www.wwpdb.org/validation/2017/XrayValidationReportHelp>

with specific help available everywhere you see the ⓘ symbol.

The types of validation reports are described at

<http://www.wwpdb.org/validation/2017/FAQs#types>.

---

The following versions of software and data (see [references](#) ①) were used in the production of this report:

MolProbity : 4.02b-467  
Mogul : 1.8.5 (274361), CSD as541be (2020)  
Xtrriage (Phenix) : 1.13  
EDS : 2.35  
buster-report : 1.1.7 (2018)  
Percentile statistics : 20191225.v01 (using entries in the PDB archive December 25th 2019)  
Refmac : 5.8.0158  
CCP4 : 7.0.044 (Gargrove)  
Ideal geometry (proteins) : Engh & Huber (2001)  
Ideal geometry (DNA, RNA) : Parkinson et al. (1996)  
Validation Pipeline (wwPDB-VP) : 2.35

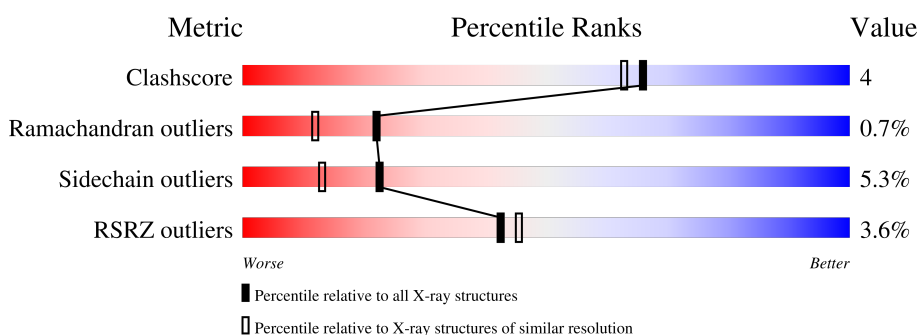
# 1 Overall quality at a glance

The following experimental techniques were used to determine the structure:

*X-RAY DIFFRACTION*

The reported resolution of this entry is 1.90 Å.

Percentile scores (ranging between 0-100) for global validation metrics of the entry are shown in the following graphic. The table shows the number of entries on which the scores are based.



Metric	Whole archive (#Entries)	Similar resolution (#Entries, resolution range(Å))
Clashscore	141614	6847 (1.90-1.90)
Ramachandran outliers	138981	6760 (1.90-1.90)
Sidechain outliers	138945	6760 (1.90-1.90)
RSRZ outliers	127900	6082 (1.90-1.90)

The table below summarises the geometric issues observed across the polymeric chains and their fit to the electron density. The red, orange, yellow and green segments of the lower bar indicate the fraction of residues that contain outliers for  $\geq 3$ , 2, 1 and 0 types of geometric quality criteria respectively. A grey segment represents the fraction of residues that are not modelled. The numeric value for each fraction is indicated below the corresponding segment, with a dot representing fractions  $\leq 5\%$ . The upper red bar (where present) indicates the fraction of residues that have poor fit to the electron density. The numeric value is given above the bar.

Mol	Chain	Length	Quality of chain
1	A	377	
1	B	377	

The following table lists non-polymeric compounds, carbohydrate monomers and non-standard residues in protein, DNA, RNA chains that are outliers for geometric or electron-density-fit criteria:

Mol	Type	Chain	Res	Chirality	Geometry	Clashes	Electron density
5	TSN	B	1387	X	-	-	-

## 2 Entry composition [i](#)

There are 6 unique types of molecules in this entry. The entry contains 6410 atoms, of which 0 are hydrogens and 0 are deuteriums.

In the tables below, the ZeroOcc column contains the number of atoms modelled with zero occupancy, the AltConf column contains the number of residues with at least one atom in alternate conformation and the Trace column contains the number of residues modelled with at most 2 atoms.

- Molecule 1 is a protein called Histone deacetylase 8.

Mol	Chain	Residues	Atoms					ZeroOcc	AltConf	Trace
			Total	C	N	O	S			
1	A	364	2807	1798	468	520	21	11	4	0
1	B	364	2821	1805	470	526	20	24	5	0

There are 2 discrepancies between the modelled and reference sequences:

Chain	Residue	Modelled	Actual	Comment	Reference
A	31	LEU	PRO	conflict	UNP Q9BY41
B	31	LEU	PRO	conflict	UNP Q9BY41

- Molecule 2 is ZINC ION (three-letter code: ZN) (formula: Zn).

Mol	Chain	Residues	Atoms		ZeroOcc	AltConf
2	A	1	Total	Zn	0	0
			1	1		
2	B	1	Total	Zn	0	0
			1	1		

- Molecule 3 is CALCIUM ION (three-letter code: CA) (formula: Ca).

Mol	Chain	Residues	Atoms		ZeroOcc	AltConf
3	A	2	Total	Ca	0	0
			2	2		
3	B	2	Total	Ca	0	0
			2	2		

- Molecule 4 is SODIUM ION (three-letter code: NA) (formula: Na).

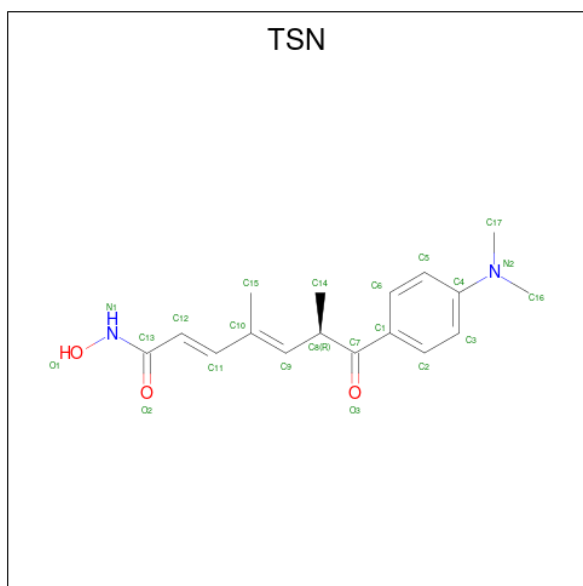
Mol	Chain	Residues	Atoms		ZeroOcc	AltConf
4	A	2	Total	Na	0	0
			2	2		

*Continued on next page...*

Continued from previous page...

Mol	Chain	Residues	Atoms		ZeroOcc	AltConf
4	B	2	Total	Na	0	0
			2	2		

- Molecule 5 is TRICHOSTATIN A (three-letter code: TSN) (formula: C<sub>17</sub>H<sub>22</sub>N<sub>2</sub>O<sub>3</sub>).



Mol	Chain	Residues	Atoms				ZeroOcc	AltConf
5	A	1	Total	C	N	O	0	0
			22	17	2	3		
5	A	1	Total	C	N	O	0	0
			22	17	2	3		
5	B	1	Total	C	N	O	0	0
			22	17	2	3		
5	B	1	Total	C	N	O	0	0
			22	17	2	3		

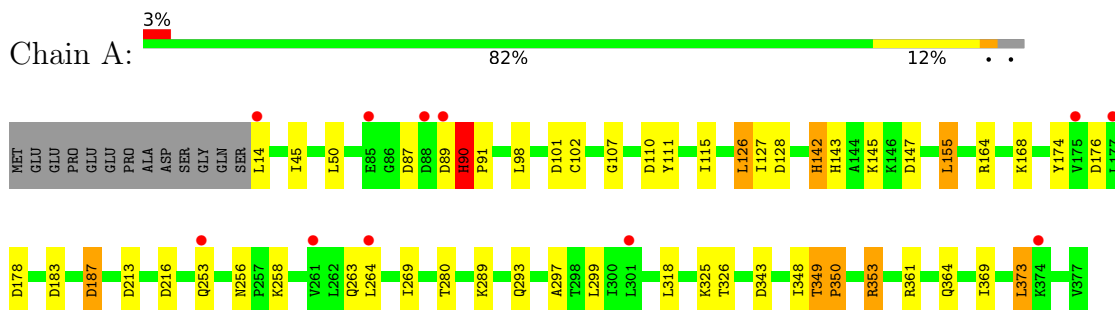
- Molecule 6 is water.

Mol	Chain	Residues	Atoms		ZeroOcc	AltConf
6	A	358	Total	O	0	0
			358	358		
6	B	326	Total	O	0	0
			326	326		

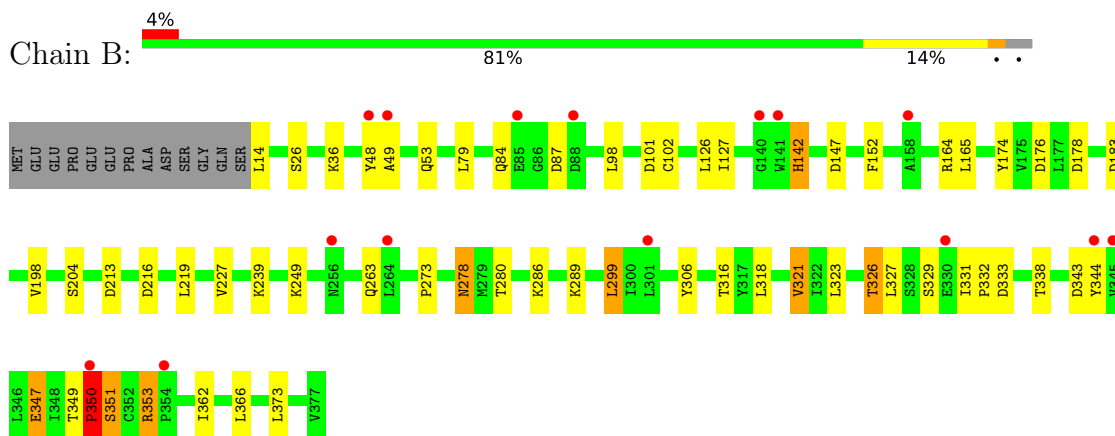
### 3 Residue-property plots [i](#)

These plots are drawn for all protein, RNA, DNA and oligosaccharide chains in the entry. The first graphic for a chain summarises the proportions of the various outlier classes displayed in the second graphic. The second graphic shows the sequence view annotated by issues in geometry and electron density. Residues are color-coded according to the number of geometric quality criteria for which they contain at least one outlier: green = 0, yellow = 1, orange = 2 and red = 3 or more. A red dot above a residue indicates a poor fit to the electron density ( $RSRZ > 2$ ). Stretches of 2 or more consecutive residues without any outlier are shown as a green connector. Residues present in the sample, but not in the model, are shown in grey.

- Molecule 1: Histone deacetylase 8



- Molecule 1: Histone deacetylase 8



## 4 Data and refinement statistics i

Property	Value	Source
Space group	P 43	Depositor
Cell constants a, b, c, $\alpha$ , $\beta$ , $\gamma$	81.01Å 81.01Å 114.18Å 90.00° 90.00° 90.00°	Depositor
Resolution (Å)	81.65 – 1.90 36.23 – 1.90	Depositor EDS
% Data completeness (in resolution range)	99.3 (81.65-1.90) 95.0 (36.23-1.90)	Depositor EDS
$R_{merge}$	0.06	Depositor
$R_{sym}$	0.06	Depositor
$\langle I/\sigma(I) \rangle$ <sup>1</sup>	2.10 (at 1.91Å)	Xtrriage
Refinement program	REFMAC 5.1.24	Depositor
R, $R_{free}$	0.172 , 0.221 0.173 , (Not available)	Depositor DCC
$R_{free}$ test set	No test flags present.	wwPDB-VP
Wilson B-factor (Å <sup>2</sup> )	26.1	Xtrriage
Anisotropy	0.276	Xtrriage
Bulk solvent $k_{sol}$ (e/Å <sup>3</sup> ), $B_{sol}$ (Å <sup>2</sup> )	0.35 , 40.5	EDS
L-test for twinning <sup>2</sup>	$\langle  L  \rangle = 0.49$ , $\langle L^2 \rangle = 0.33$	Xtrriage
Estimated twinning fraction	0.037 for h,-k,-l	Xtrriage
$F_o, F_c$ correlation	0.96	EDS
Total number of atoms	6410	wwPDB-VP
Average B, all atoms (Å <sup>2</sup> )	18.0	wwPDB-VP

Xtrriage's analysis on translational NCS is as follows: *The largest off-origin peak in the Patterson function is 3.90% of the height of the origin peak. No significant pseudotranslation is detected.*

<sup>1</sup>Intensities estimated from amplitudes.

<sup>2</sup>Theoretical values of  $\langle |L| \rangle$ ,  $\langle L^2 \rangle$  for acentric reflections are 0.5, 0.333 respectively for untwinned datasets, and 0.375, 0.2 for perfectly twinned datasets.

## 5 Model quality [i](#)

### 5.1 Standard geometry [i](#)

Bond lengths and bond angles in the following residue types are not validated in this section: ZN, NA, CA, TSN

The Z score for a bond length (or angle) is the number of standard deviations the observed value is removed from the expected value. A bond length (or angle) with  $|Z| > 5$  is considered an outlier worth inspection. RMSZ is the root-mean-square of all Z scores of the bond lengths (or angles).

Mol	Chain	Bond lengths		Bond angles	
		RMSZ	# Z  >5	RMSZ	# Z  >5
1	A	1.03	6/2894 (0.2%)	0.82	13/3932 (0.3%)
1	B	1.50	13/2912 (0.4%)	0.95	18/3952 (0.5%)
All	All	1.29	19/5806 (0.3%)	0.89	31/7884 (0.4%)

Chiral center outliers are detected by calculating the chiral volume of a chiral center and verifying if the center is modelled as a planar moiety or with the opposite hand. A planarity outlier is detected by checking planarity of atoms in a peptide group, atoms in a mainchain group or atoms of a sidechain that are expected to be planar.

Mol	Chain	#Chirality outliers	#Planarity outliers
1	A	0	2
1	B	0	2
All	All	0	4

All (19) bond length outliers are listed below:

Mol	Chain	Res	Type	Atoms	Z	Observed(Å)	Ideal(Å)
1	B	347	GLU	CD-OE1	49.57	1.80	1.25
1	B	329	SER	CB-OG	43.07	1.98	1.42
1	A	168	LYS	CE-NZ	33.09	2.31	1.49
1	A	325	LYS	CE-NZ	-28.13	0.78	1.49
1	B	347	GLU	CD-OE2	19.61	1.47	1.25
1	A	90	HIS	CD2-NE2	15.79	1.75	1.42
1	B	249	LYS	CD-CE	14.50	1.87	1.51
1	B	49	ALA	CA-CB	14.16	1.82	1.52
1	A	90	HIS	CG-CD2	11.93	1.56	1.35
1	A	155	LEU	CG-CD2	-11.82	1.08	1.51
1	B	366	LEU	CG-CD2	-11.48	1.09	1.51
1	B	286	LYS	CE-NZ	10.98	1.76	1.49
1	B	347	GLU	CB-CG	-9.34	1.34	1.52
1	B	249	LYS	CG-CD	7.89	1.79	1.52

*Continued on next page...*



*Continued from previous page...*

Mol	Chain	Res	Type	Atoms	Z	Observed(Å)	Ideal(Å)
1	B	36	LYS	CE-NZ	-7.16	1.31	1.49
1	B	286	LYS	CD-CE	6.84	1.68	1.51
1	A	289	LYS	CG-CD	-6.58	1.30	1.52
1	B	249	LYS	CE-NZ	-6.05	1.33	1.49
1	B	344	TYR	C-O	5.40	1.33	1.23

All (31) bond angle outliers are listed below:

Mol	Chain	Res	Type	Atoms	Z	Observed(°)	Ideal(°)
1	B	347	GLU	OE1-CD-OE2	-21.25	97.80	123.30
1	A	90	HIS	CG-CD2-NE2	-12.81	84.86	109.20
1	B	14	LEU	N-CA-CB	-12.35	85.69	110.40
1	A	325	LYS	CD-CE-NZ	10.94	136.87	111.70
1	B	286	LYS	CD-CE-NZ	10.68	136.27	111.70
1	A	168	LYS	CD-CE-NZ	-10.46	87.64	111.70
1	B	353	ARG	NE-CZ-NH1	9.89	125.25	120.30
1	B	366	LEU	CB-CG-CD1	-8.94	95.80	111.00
1	B	338	THR	OG1-CB-CG2	8.74	130.11	110.00
1	B	366	LEU	CD1-CG-CD2	8.64	136.42	110.50
1	B	347	GLU	CA-CB-CG	8.48	132.05	113.40
1	A	155	LEU	CB-CG-CD2	7.84	124.33	111.00
1	A	147	ASP	CB-CG-OD2	7.29	124.86	118.30
1	B	213	ASP	CB-CG-OD2	6.75	124.38	118.30
1	B	289	LYS	CD-CE-NZ	6.31	126.20	111.70
1	A	110	ASP	CB-CG-OD2	6.24	123.92	118.30
1	B	101	ASP	CB-CG-OD2	6.17	123.85	118.30
1	A	101	ASP	CB-CG-OD2	6.12	123.81	118.30
1	B	353	ARG	CD-NE-CZ	5.96	131.95	123.60
1	A	128	ASP	CB-CG-OD2	5.67	123.41	118.30
1	B	183	ASP	CB-CG-OD2	5.59	123.33	118.30
1	A	216	ASP	CB-CG-OD2	5.58	123.32	118.30
1	B	343	ASP	CB-CG-OD2	5.41	123.17	118.30
1	B	216	ASP	CB-CG-OD2	5.41	123.17	118.30
1	B	333	ASP	CB-CG-OD2	5.41	123.17	118.30
1	A	183	ASP	CB-CG-OD2	5.24	123.01	118.30
1	A	187	ASP	CB-CG-OD2	5.22	123.00	118.30
1	A	213	ASP	CB-CG-OD2	5.20	122.98	118.30
1	B	299	LEU	CA-CB-CG	5.19	127.23	115.30
1	B	147	ASP	CB-CG-OD2	5.12	122.91	118.30
1	A	343	ASP	CB-CG-OD2	5.01	122.81	118.30

There are no chirality outliers.

All (4) planarity outliers are listed below:

Mol	Chain	Res	Type	Group
1	A	349	THR	Peptide
1	A	90	HIS	Sidechain
1	B	347	GLU	Sidechain
1	B	349	THR	Peptide

## 5.2 Too-close contacts [i](#)

In the following table, the Non-H and H(model) columns list the number of non-hydrogen atoms and hydrogen atoms in the chain respectively. The H(added) column lists the number of hydrogen atoms added and optimized by MolProbity. The Clashes column lists the number of clashes within the asymmetric unit, whereas Symm-Clashes lists symmetry-related clashes.

Mol	Chain	Non-H	H(model)	H(added)	Clashes	Symm-Clashes
1	A	2807	0	2719	21	0
1	B	2821	0	2736	22	0
2	A	1	0	0	0	0
2	B	1	0	0	0	0
3	A	2	0	0	0	0
3	B	2	0	0	0	0
4	A	2	0	0	0	0
4	B	2	0	0	0	0
5	A	44	0	43	2	0
5	B	44	0	43	3	0
6	A	358	0	0	2	0
6	B	326	0	0	1	0
All	All	6410	0	5541	45	0

The all-atom clashscore is defined as the number of clashes found per 1000 atoms (including hydrogen atoms). The all-atom clashscore for this structure is 4.

All (45) close contacts within the same asymmetric unit are listed below, sorted by their clash magnitude.

Atom-1	Atom-2	Interatomic distance (Å)	Clash overlap (Å)
1:B:280:THR:HG22	1:B:350:PRO:HD2	1.59	0.81
1:B:239:LYS:HE3	6:B:1076:HOH:O	1.81	0.79
1:B:278:ASN:HD21	1:B:351:SER:H	1.41	0.67
1:B:152:PHE:CZ	5:B:1387:TSN:H142	2.31	0.65
1:B:48:TYR:CD2	1:B:316:THR:HG21	2.36	0.61
1:A:126:LEU:HG	1:A:297:ALA:HB1	1.83	0.60

*Continued on next page...*

Continued from previous page...

Atom-1	Atom-2	Interatomic distance (Å)	Clash overlap (Å)
1:B:48:TYR:CE1	1:B:327:LEU:HB3	2.36	0.60
1:A:269:ILE:HG21	1:A:348:ILE:HD13	1.84	0.58
1:B:280:THR:HG22	1:B:350:PRO:CD	2.31	0.58
1:B:178:ASP:HB2	1:B:263:GLN:OE1	2.07	0.54
1:B:280:THR:CG2	1:B:350:PRO:HD2	2.33	0.53
1:A:174:TYR:CE2	1:A:176:ASP:HB2	2.44	0.52
1:A:264:LEU:HD13	1:A:318:LEU:HD13	1.92	0.52
1:A:178:ASP:HB2	1:A:263:GLN:OE1	2.09	0.51
1:A:361:ARG:HH21	1:A:364:GLN:NE2	2.09	0.51
1:A:369:ILE:HG22	1:A:373:LEU:HD22	1.93	0.51
1:A:361:ARG:HH21	1:A:364:GLN:HE21	1.59	0.50
1:B:318:LEU:HA	1:B:321:VAL:HG13	1.93	0.49
1:A:280:THR:CG2	1:A:350:PRO:HD3	2.43	0.49
5:B:1387:TSN:C14	5:B:1387:TSN:H61	2.44	0.48
1:A:127:ILE:HD11	1:A:164:ARG:O	2.15	0.47
1:A:111:TYR:CZ	1:A:115:ILE:CD1	2.98	0.47
1:B:174:TYR:CE2	1:B:176:ASP:HB2	2.50	0.47
5:B:1387:TSN:H142	5:B:1387:TSN:H61	1.97	0.46
1:A:258:LYS:HA	1:A:258:LYS:HD3	1.79	0.46
1:B:142:HIS:H	1:B:142:HIS:CD2	2.34	0.45
1:B:48:TYR:HD2	1:B:316:THR:HG21	1.79	0.44
1:A:353:ARG:HH11	1:A:353:ARG:HG2	1.82	0.43
1:B:198:VAL:HG22	1:B:227:VAL:HB	2.01	0.43
1:A:353:ARG:HG2	6:A:600:HOH:O	2.18	0.43
5:A:386:TSN:H61	5:A:386:TSN:H8	1.91	0.43
1:A:142:HIS:CD2	1:A:142:HIS:H	2.38	0.42
1:B:127:ILE:HD11	1:B:165:LEU:HA	2.01	0.42
1:B:331:ILE:HA	1:B:332:PRO:HD2	1.91	0.42
1:B:362:ILE:HD13	1:B:362:ILE:HA	1.87	0.42
1:B:273:PRO:HG2	1:B:306:TYR:HB2	2.02	0.41
1:A:90:HIS:HA	1:A:91:PRO:HD3	1.85	0.41
1:A:45:ILE:HG23	1:A:50:LEU:HB2	2.03	0.41
1:A:145:LYS:HD2	6:A:556:HOH:O	2.20	0.41
1:B:127:ILE:HD11	1:B:164:ARG:O	2.22	0.40
1:B:280:THR:CG2	1:B:350:PRO:CD	2.95	0.40
1:A:107:GLY:HA2	1:B:326:THR:HG21	2.04	0.40
1:B:53:GLN:HB3	1:B:323:LEU:HD22	2.04	0.40
1:A:143:HIS:NE2	5:A:386:TSN:N1	2.70	0.40
1:A:349:THR:HA	1:A:350:PRO:HD2	1.92	0.40

There are no symmetry-related clashes.

## 5.3 Torsion angles [i](#)

### 5.3.1 Protein backbone [i](#)

In the following table, the Percentiles column shows the percent Ramachandran outliers of the chain as a percentile score with respect to all X-ray entries followed by that with respect to entries of similar resolution.

The Analysed column shows the number of residues for which the backbone conformation was analysed, and the total number of residues.

Mol	Chain	Analysed	Favoured	Allowed	Outliers	Percentiles	
1	A	366/377 (97%)	358 (98%)	5 (1%)	3 (1%)	19	9
1	B	367/377 (97%)	358 (98%)	7 (2%)	2 (0%)	29	18
All	All	733/754 (97%)	716 (98%)	12 (2%)	5 (1%)	22	12

All (5) Ramachandran outliers are listed below:

Mol	Chain	Res	Type
1	B	350	PRO
1	A	89	ASP
1	A	350	PRO
1	B	87	ASP
1	A	87	ASP

### 5.3.2 Protein sidechains [i](#)

In the following table, the Percentiles column shows the percent sidechain outliers of the chain as a percentile score with respect to all X-ray entries followed by that with respect to entries of similar resolution.

The Analysed column shows the number of residues for which the sidechain conformation was analysed, and the total number of residues.

Mol	Chain	Analysed	Rotameric	Outliers	Percentiles	
1	A	298/316 (94%)	283 (95%)	15 (5%)	24	15
1	B	301/316 (95%)	283 (94%)	18 (6%)	19	9
All	All	599/632 (95%)	566 (94%)	33 (6%)	22	12

All (33) residues with a non-rotameric sidechain are listed below:

Mol	Chain	Res	Type
1	A	14	LEU

*Continued on next page...*

*Continued from previous page...*

Mol	Chain	Res	Type
1	A	98	LEU
1	A	102[A]	CYS
1	A	102[B]	CYS
1	A	126	LEU
1	A	142	HIS
1	A	155	LEU
1	A	187	ASP
1	A	253	GLN
1	A	256	ASN
1	A	293	GLN
1	A	299	LEU
1	A	326	THR
1	A	353	ARG
1	A	373	LEU
1	B	26[A]	SER
1	B	26[B]	SER
1	B	79	LEU
1	B	84	GLN
1	B	98	LEU
1	B	102	CYS
1	B	126	LEU
1	B	142	HIS
1	B	204	SER
1	B	219	LEU
1	B	278	ASN
1	B	299	LEU
1	B	321	VAL
1	B	326	THR
1	B	350	PRO
1	B	351	SER
1	B	353	ARG
1	B	373	LEU

Sometimes sidechains can be flipped to improve hydrogen bonding and reduce clashes. All (11) such sidechains are listed below:

Mol	Chain	Res	Type
1	A	51	HIS
1	A	84	GLN
1	A	136	ASN
1	A	232	GLN
1	A	364	GLN
1	A	372	ASN

*Continued on next page...*

*Continued from previous page...*

Mol	Chain	Res	Type
1	B	51	HIS
1	B	53	GLN
1	B	278	ASN
1	B	364	GLN
1	B	372	ASN

### 5.3.3 RNA [i](#)

There are no RNA molecules in this entry.

### 5.4 Non-standard residues in protein, DNA, RNA chains [i](#)

There are no non-standard protein/DNA/RNA residues in this entry.

### 5.5 Carbohydrates [i](#)

There are no monosaccharides in this entry.

### 5.6 Ligand geometry [i](#)

Of 14 ligands modelled in this entry, 10 are monoatomic - leaving 4 for Mogul analysis.

In the following table, the Counts columns list the number of bonds (or angles) for which Mogul statistics could be retrieved, the number of bonds (or angles) that are observed in the model and the number of bonds (or angles) that are defined in the Chemical Component Dictionary. The Link column lists molecule types, if any, to which the group is linked. The Z score for a bond length (or angle) is the number of standard deviations the observed value is removed from the expected value. A bond length (or angle) with  $|Z| > 2$  is considered an outlier worth inspection. RMSZ is the root-mean-square of all Z scores of the bond lengths (or angles).

Mol	Type	Chain	Res	Link	Bond lengths			Bond angles		
					Counts	RMSZ	# $ Z  > 2$	Counts	RMSZ	# $ Z  > 2$
5	TSN	A	387	-	22,22,22	1.32	1 (4%)	27,29,29	1.20	4 (14%)
5	TSN	B	1387	-	22,22,22	1.37	1 (4%)	27,29,29	2.56	7 (25%)
5	TSN	B	1386	2	22,22,22	1.42	1 (4%)	27,29,29	1.09	1 (3%)
5	TSN	A	386	2	22,22,22	1.45	1 (4%)	27,29,29	1.45	4 (14%)

In the following table, the Chirals column lists the number of chiral outliers, the number of chiral centers analysed, the number of these observed in the model and the number defined in the Chemical Component Dictionary. Similar counts are reported in the Torsion and Rings columns.

'-' means no outliers of that kind were identified.

Mol	Type	Chain	Res	Link	Chirals	Torsions	Rings
5	TSN	A	387	-	-	6/23/23/23	0/1/1/1
5	TSN	B	1387	-	1/1/5/9	8/23/23/23	0/1/1/1
5	TSN	B	1386	2	-	1/23/23/23	0/1/1/1
5	TSN	A	386	2	-	5/23/23/23	0/1/1/1

All (4) bond length outliers are listed below:

Mol	Chain	Res	Type	Atoms	Z	Observed(Å)	Ideal(Å)
5	B	1386	TSN	O1-N1	-5.93	1.25	1.40
5	A	386	TSN	O1-N1	-5.79	1.25	1.40
5	B	1387	TSN	O1-N1	-5.49	1.26	1.40
5	A	387	TSN	O1-N1	-5.26	1.26	1.40

All (16) bond angle outliers are listed below:

Mol	Chain	Res	Type	Atoms	Z	Observed(°)	Ideal(°)
5	B	1387	TSN	C1-C7-C8	8.19	126.86	119.29
5	B	1387	TSN	O3-C7-C8	-5.88	114.36	119.81
5	B	1387	TSN	C14-C8-C7	4.86	118.83	108.89
5	A	386	TSN	C14-C8-C9	-4.34	106.69	110.75
5	B	1387	TSN	C15-C10-C11	3.14	123.03	118.08
5	B	1387	TSN	C14-C8-C9	3.03	113.58	110.75
5	A	387	TSN	C12-C13-N1	2.86	120.07	114.38
5	B	1386	TSN	C14-C8-C9	-2.73	108.19	110.75
5	B	1387	TSN	C12-C13-N1	2.62	119.60	114.38
5	B	1387	TSN	C11-C10-C9	-2.60	110.88	119.42
5	A	386	TSN	C15-C10-C11	2.41	121.87	118.08
5	A	386	TSN	C12-C13-N1	2.31	118.98	114.38
5	A	387	TSN	C12-C11-C10	-2.30	122.75	126.23
5	A	387	TSN	O2-C13-C12	-2.28	117.82	123.03
5	A	386	TSN	C12-C11-C10	-2.23	122.86	126.23
5	A	387	TSN	C15-C10-C11	2.22	121.58	118.08

All (1) chirality outliers are listed below:

Mol	Chain	Res	Type	Atom
5	B	1387	TSN	C8

All (20) torsion outliers are listed below:

Mol	Chain	Res	Type	Atoms
5	A	386	TSN	O2-C13-N1-O1
5	A	386	TSN	C12-C13-N1-O1
5	A	386	TSN	C9-C10-C11-C12
5	A	386	TSN	C15-C10-C11-C12
5	A	387	TSN	O3-C7-C8-C9
5	A	387	TSN	C9-C10-C11-C12
5	A	387	TSN	C15-C10-C11-C12
5	A	387	TSN	C11-C12-C13-N1
5	B	1387	TSN	O3-C7-C8-C14
5	B	1387	TSN	C1-C7-C8-C14
5	B	1387	TSN	C9-C10-C11-C12
5	B	1387	TSN	C15-C10-C11-C12
5	B	1387	TSN	C11-C12-C13-N1
5	B	1387	TSN	C14-C8-C9-C10
5	A	387	TSN	C1-C7-C8-C9
5	A	387	TSN	C11-C12-C13-O2
5	A	386	TSN	C1-C7-C8-C14
5	B	1386	TSN	C1-C7-C8-C14
5	B	1387	TSN	C11-C12-C13-O2
5	B	1387	TSN	C7-C8-C9-C10

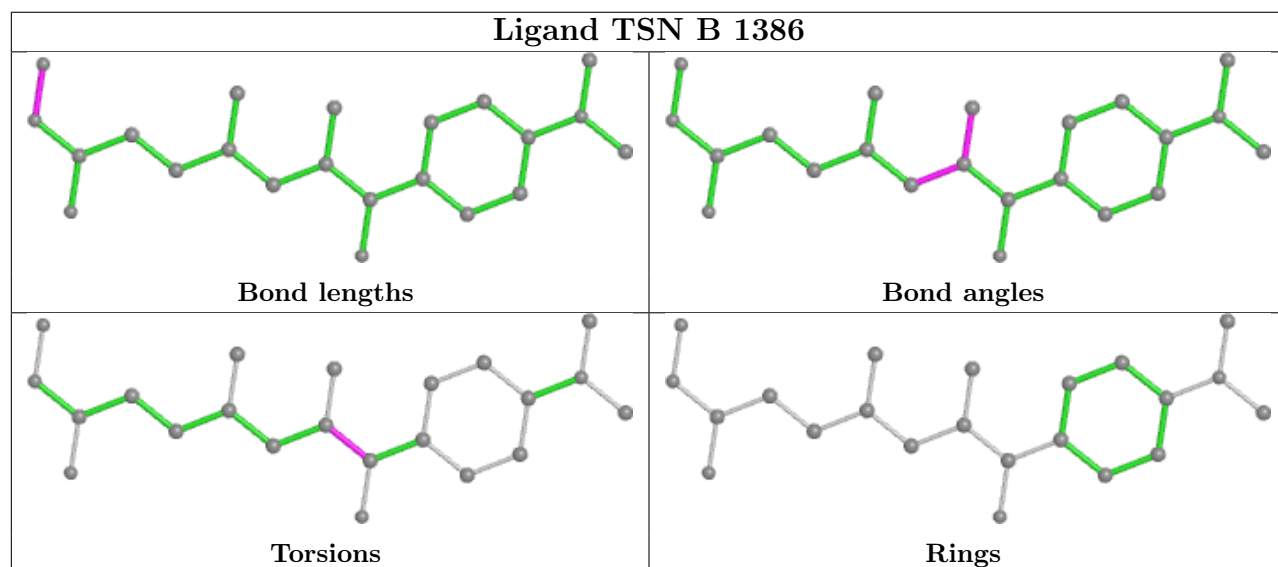
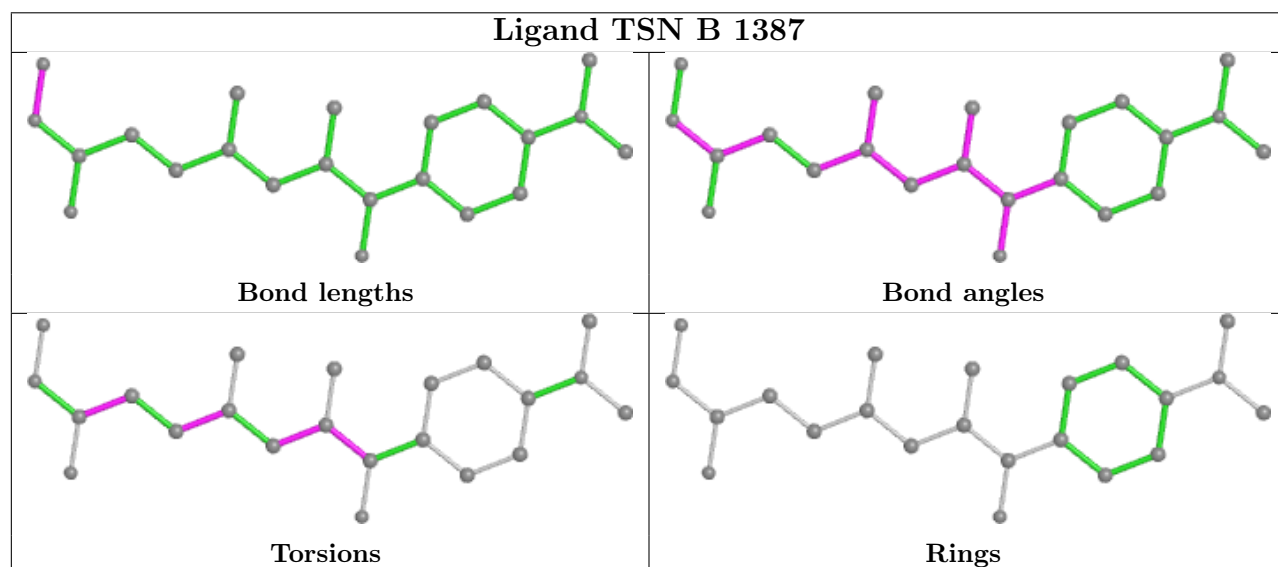
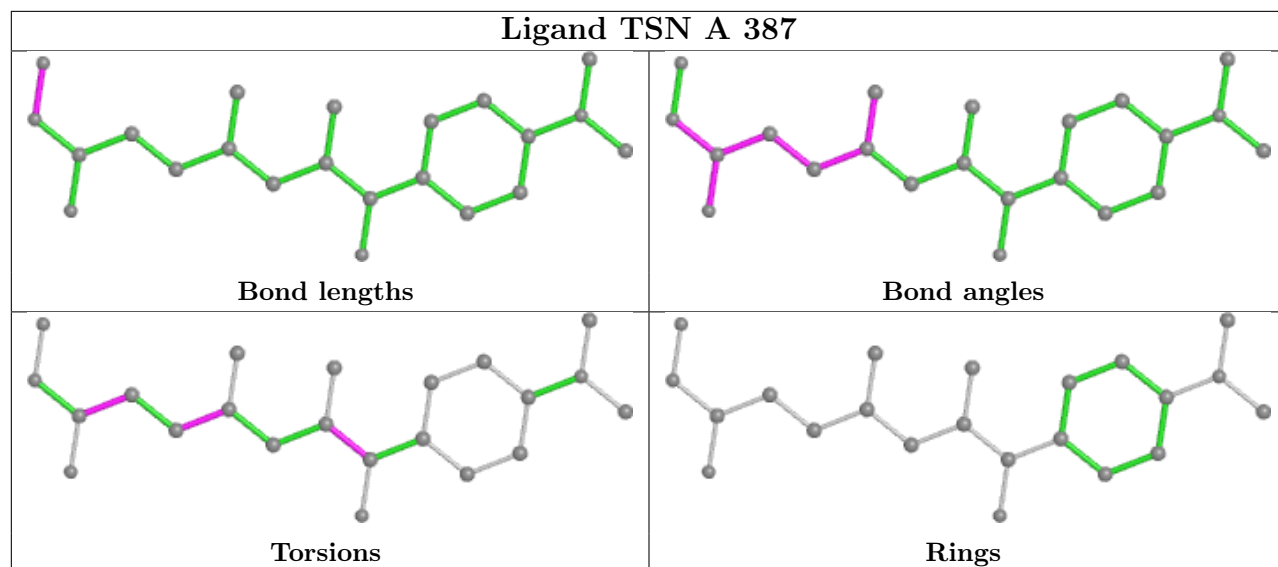
There are no ring outliers.

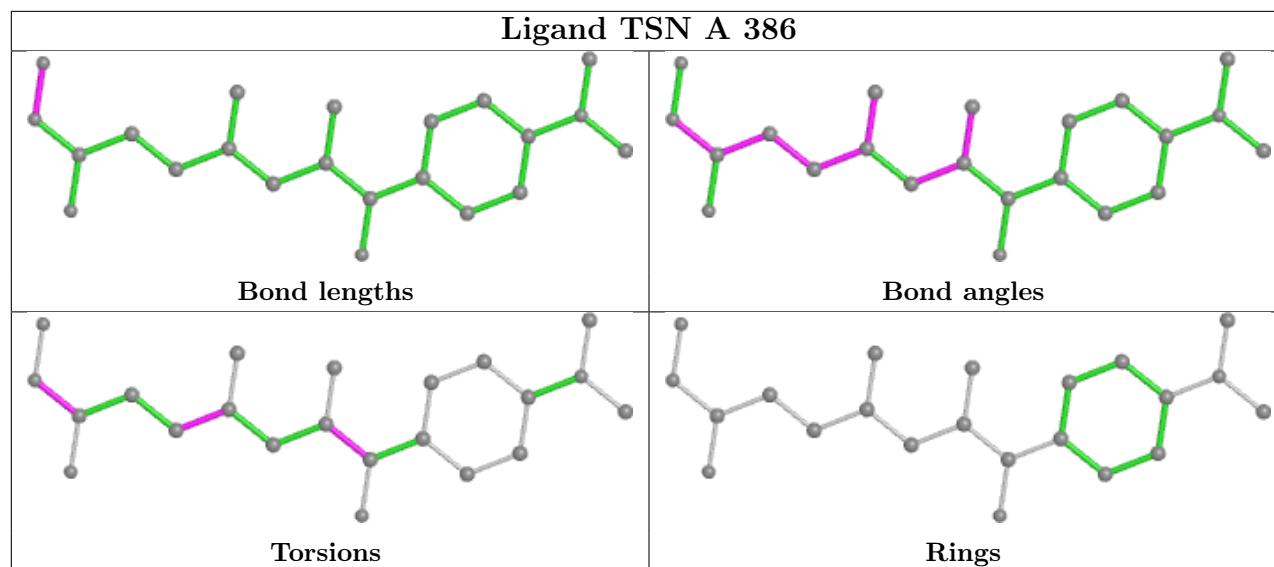
2 monomers are involved in 5 short contacts:

Mol	Chain	Res	Type	Clashes	Symm-Clashes
5	B	1387	TSN	3	0
5	A	386	TSN	2	0

The following is a two-dimensional graphical depiction of Mogul quality analysis of bond lengths, bond angles, torsion angles, and ring geometry for all instances of the Ligand of Interest. In addition, ligands with molecular weight > 250 and outliers as shown on the validation Tables will also be included. For torsion angles, if less than 5% of the Mogul distribution of torsion angles is within 10 degrees of the torsion angle in question, then that torsion angle is considered an outlier. Any bond that is central to one or more torsion angles identified as an outlier by Mogul will be highlighted in the graph. For rings, the root-mean-square deviation (RMSD) between the ring in question and similar rings identified by Mogul is calculated over all ring torsion angles. If the average RMSD is greater than 60 degrees and the minimal RMSD between the ring in question and any Mogul-identified rings is also greater than 60 degrees, then that ring is considered an outlier. The outliers are highlighted in purple. The color gray indicates Mogul did not find sufficient equivalents in the CSD to analyse the geometry.







## 5.7 Other polymers [\(i\)](#)

There are no such residues in this entry.

## 5.8 Polymer linkage issues [\(i\)](#)

There are no chain breaks in this entry.

## 6 Fit of model and data

### 6.1 Protein, DNA and RNA chains

In the following table, the column labelled ‘#RSRZ > 2’ contains the number (and percentage) of RSRZ outliers, followed by percent RSRZ outliers for the chain as percentile scores relative to all X-ray entries and entries of similar resolution. The OWAB column contains the minimum, median, 95<sup>th</sup> percentile and maximum values of the occupancy-weighted average B-factor per residue. The column labelled ‘Q < 0.9’ lists the number of (and percentage) of residues with an average occupancy less than 0.9.

Mol	Chain	Analysed	<RSRZ>	#RSRZ>2	OWAB(Å <sup>2</sup> )	Q<0.9
1	A	364/377 (96%)	0.00	11 (3%) 50 53	9, 14, 19, 27	6 (1%)
1	B	364/377 (96%)	0.17	15 (4%) 37 40	10, 14, 22, 29	13 (3%)
All	All	728/754 (96%)	0.09	26 (3%) 42 45	9, 14, 21, 29	19 (2%)

All (26) RSRZ outliers are listed below:

Mol	Chain	Res	Type	RSRZ
1	A	88	ASP	6.1
1	B	48	TYR	5.7
1	A	85	GLU	3.7
1	A	89	ASP	3.6
1	A	177	LEU	3.3
1	B	88	ASP	3.1
1	A	261	VAL	2.9
1	B	264	LEU	2.8
1	A	14	LEU	2.8
1	B	49	ALA	2.8
1	B	344	TYR	2.8
1	A	253	GLN	2.8
1	A	301	LEU	2.8
1	B	301	LEU	2.7
1	B	141	TRP	2.7
1	B	330	GLU	2.5
1	B	85	GLU	2.5
1	B	350	PRO	2.5
1	B	354	PRO	2.4
1	A	264	LEU	2.3
1	B	345	VAL	2.3
1	B	140	GLY	2.3
1	A	175	VAL	2.3
1	B	256[A]	ASN	2.2

*Continued on next page...*

*Continued from previous page...*

Mol	Chain	Res	Type	RSRZ
1	A	374	LYS	2.2
1	B	158	ALA	2.1

## 6.2 Non-standard residues in protein, DNA, RNA chains [i](#)

There are no non-standard protein/DNA/RNA residues in this entry.

## 6.3 Carbohydrates [i](#)

There are no monosaccharides in this entry.

## 6.4 Ligands [i](#)

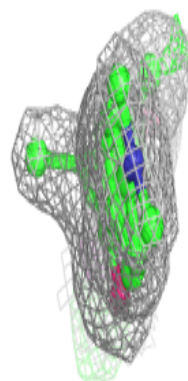
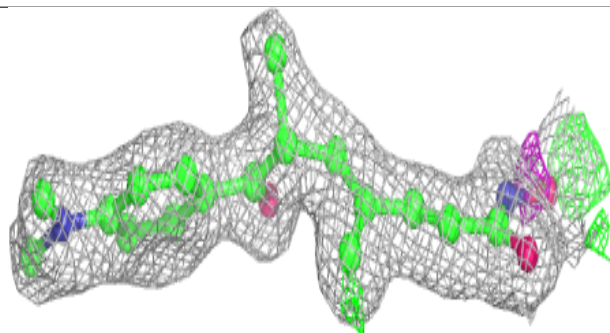
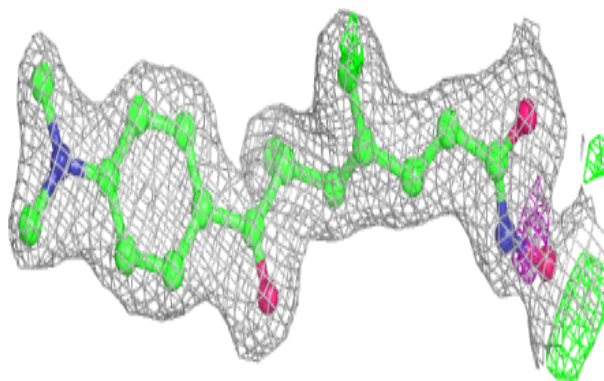
In the following table, the Atoms column lists the number of modelled atoms in the group and the number defined in the chemical component dictionary. The B-factors column lists the minimum, median, 95<sup>th</sup> percentile and maximum values of B factors of atoms in the group. The column labelled 'Q < 0.9' lists the number of atoms with occupancy less than 0.9.

Mol	Type	Chain	Res	Atoms	RSCC	RSR	B-factors( $\text{\AA}^2$ )	Q < 0.9
5	TSN	A	387	22/22	0.89	0.14	27,30,42,49	0
5	TSN	B	1387	22/22	0.89	0.15	24,35,41,48	0
3	CA	B	1390	1/1	0.91	0.06	48,48,48,48	0
5	TSN	B	1386	22/22	0.94	0.12	26,33,35,36	0
5	TSN	A	386	22/22	0.96	0.09	28,30,32,33	0
3	CA	A	390	1/1	0.97	0.04	60,60,60,60	0
4	NA	A	392	1/1	0.98	0.10	22,22,22,22	0
4	NA	A	391	1/1	0.99	0.05	28,28,28,28	0
3	CA	A	389	1/1	0.99	0.03	25,25,25,25	0
4	NA	B	1391	1/1	0.99	0.17	26,26,26,26	0
4	NA	B	1392	1/1	0.99	0.04	24,24,24,24	0
2	ZN	A	388	1/1	1.00	0.05	26,26,26,26	0
2	ZN	B	1388	1/1	1.00	0.05	26,26,26,26	0
3	CA	B	1389	1/1	1.00	0.02	28,28,28,28	0

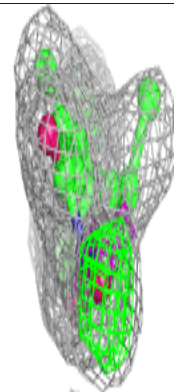
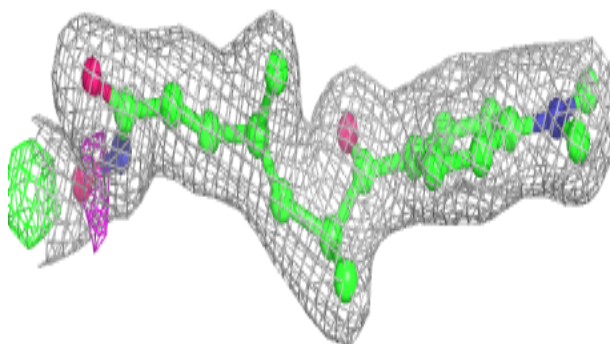
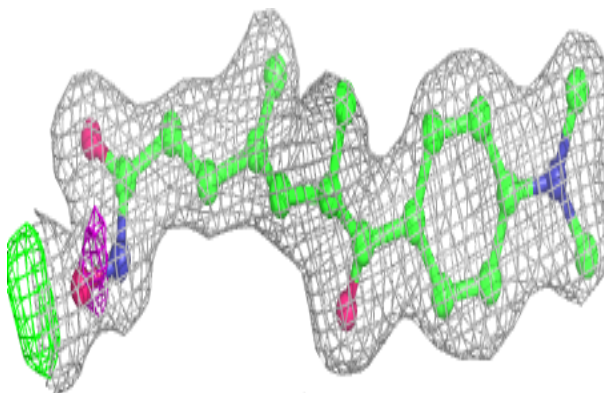
The following is a graphical depiction of the model fit to experimental electron density of all instances of the Ligand of Interest. In addition, ligands with molecular weight > 250 and outliers as shown on the geometry validation Tables will also be included. Each fit is shown from different orientation to approximate a three-dimensional view.

**Electron density around TSN A 387:**

$2mF_o-DF_c$  (at 0.7 rmsd) in gray  
 $mF_o-DF_c$  (at 3 rmsd) in purple (negative)  
and green (positive)

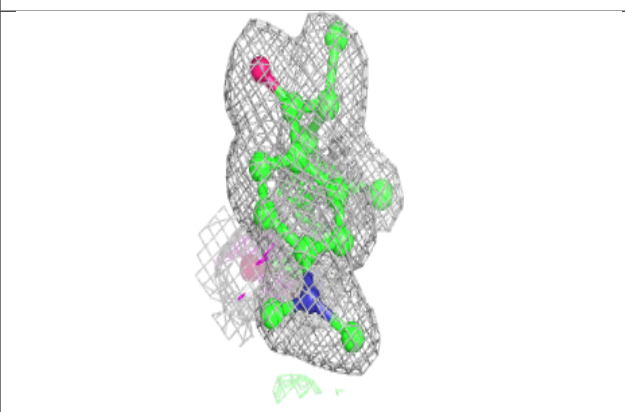
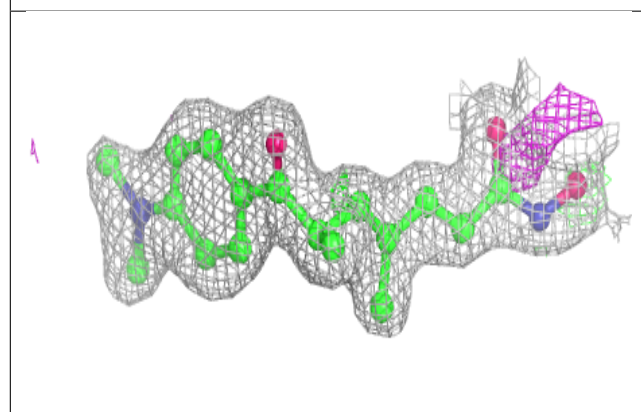
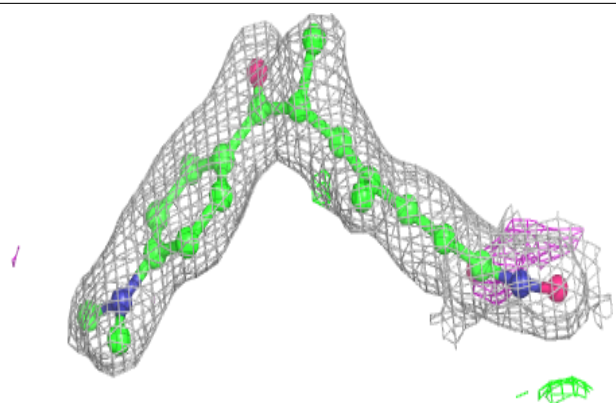
**Electron density around TSN B 1387:**

$2mF_o-DF_c$  (at 0.7 rmsd) in gray  
 $mF_o-DF_c$  (at 3 rmsd) in purple (negative)  
and green (positive)

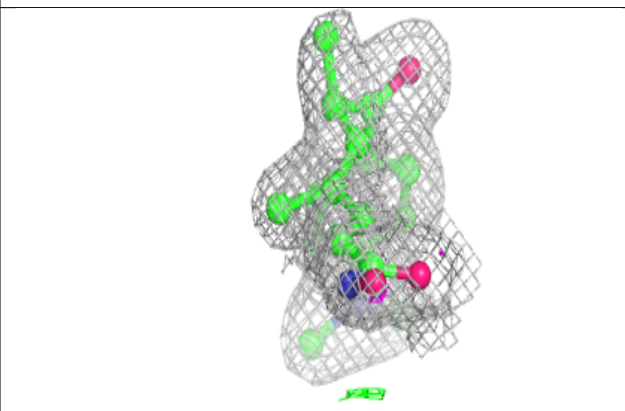
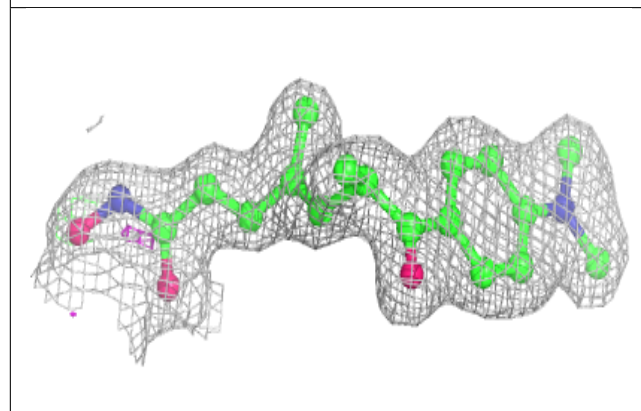
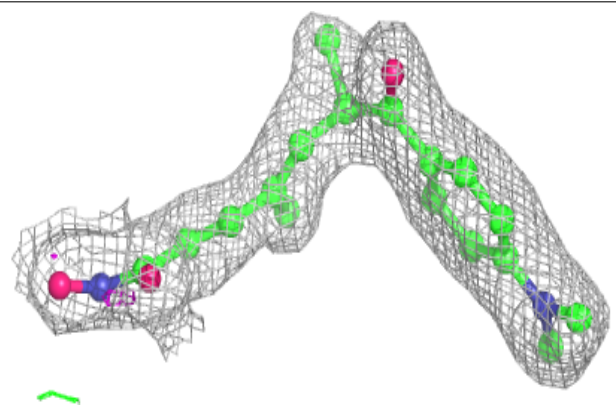


**Electron density around TSN B 1386:**

$2mF_o-DF_c$  (at 0.7 rmsd) in gray  
 $mF_o-DF_c$  (at 3 rmsd) in purple (negative)  
and green (positive)

**Electron density around TSN A 386:**

$2mF_o-DF_c$  (at 0.7 rmsd) in gray  
 $mF_o-DF_c$  (at 3 rmsd) in purple (negative)  
and green (positive)



## 6.5 Other polymers [i](#)

There are no such residues in this entry.