



# wwPDB X-ray Structure Validation Summary Report ⓘ

Oct 15, 2023 – 01:42 AM EDT

PDB ID : 7T9E  
Title : Crystal structure of dehaloperoxidase B in complex with +(-)-limonene oxide  
Authors : de Serrano, V.S.; Ghiladi, R.A.; Malewschik, T.; Yun, D.  
Deposited on : 2021-12-18  
Resolution : 1.57 Å(reported)

This is a wwPDB X-ray Structure Validation Summary Report for a publicly released PDB entry.

We welcome your comments at [validation@mail.wwpdb.org](mailto:validation@mail.wwpdb.org)

A user guide is available at

<https://www.wwpdb.org/validation/2017/XrayValidationReportHelp>

with specific help available everywhere you see the ⓘ symbol.

The types of validation reports are described at

<http://www.wwpdb.org/validation/2017/FAQs#types>.

---

The following versions of software and data (see [references ⓘ](#)) were used in the production of this report:

MolProbity : 4.02b-467  
Mogul : 1.8.5 (274361), CSD as541be (2020)  
Xtriage (Phenix) : 1.13  
EDS : 2.36  
buster-report : 1.1.7 (2018)  
Percentile statistics : 20191225.v01 (using entries in the PDB archive December 25th 2019)  
Refmac : 5.8.0158  
CCP4 : 7.0.044 (Gargrove)  
Ideal geometry (proteins) : Engh & Huber (2001)  
Ideal geometry (DNA, RNA) : Parkinson et al. (1996)  
Validation Pipeline (wwPDB-VP) : 2.36

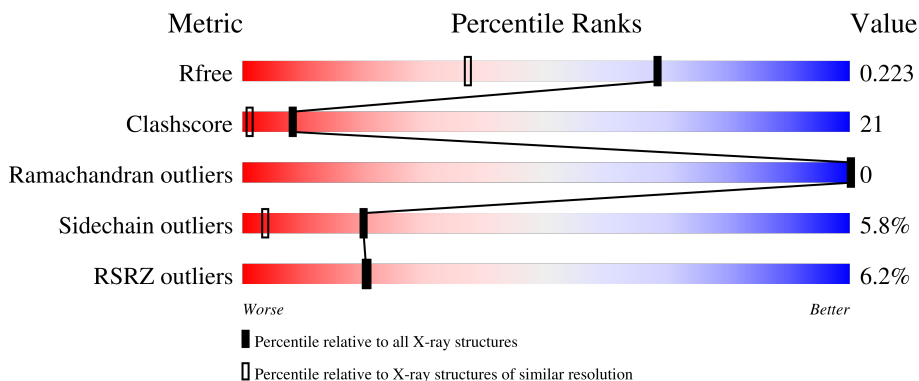
# 1 Overall quality at a glance

The following experimental techniques were used to determine the structure:

*X-RAY DIFFRACTION*

The reported resolution of this entry is 1.57 Å.

Percentile scores (ranging between 0-100) for global validation metrics of the entry are shown in the following graphic. The table shows the number of entries on which the scores are based.



Metric	Whole archive (#Entries)	Similar resolution (#Entries, resolution range(Å))
$R_{free}$	130704	5534 (1.60-1.56)
Clashscore	141614	5861 (1.60-1.56)
Ramachandran outliers	138981	5708 (1.60-1.56)
Sidechain outliers	138945	5703 (1.60-1.56)
RSRZ outliers	127900	5431 (1.60-1.56)

The table below summarises the geometric issues observed across the polymeric chains and their fit to the electron density. The red, orange, yellow and green segments of the lower bar indicate the fraction of residues that contain outliers for  $\geq 3$ , 2, 1 and 0 types of geometric quality criteria respectively. A grey segment represents the fraction of residues that are not modelled. The numeric value for each fraction is indicated below the corresponding segment, with a dot representing fractions  $\leq 5\%$ . The upper red bar (where present) indicates the fraction of residues that have poor fit to the electron density. The numeric value is given above the bar.

Mol	Chain	Length	Quality of chain
1	AAA	137	
1	BBB	137	

The following table lists non-polymeric compounds, carbohydrate monomers and non-standard residues in protein, DNA, RNA chains that are outliers for geometric or electron-density-fit criteria:

Mol	Type	Chain	Res	Chirality	Geometry	Clashes	Electron density
3	GH9	AAA	202	-	-	X	-
3	GH9	BBB	203	-	-	X	-
4	GOL	BBB	201	-	-	X	-

## 2 Entry composition [i](#)

There are 6 unique types of molecules in this entry. The entry contains 2833 atoms, of which 0 are hydrogens and 0 are deuteriums.

In the tables below, the ZeroOcc column contains the number of atoms modelled with zero occupancy, the AltConf column contains the number of residues with at least one atom in alternate conformation and the Trace column contains the number of residues modelled with at most 2 atoms.

- Molecule 1 is a protein called Dehaloperoxidase B.

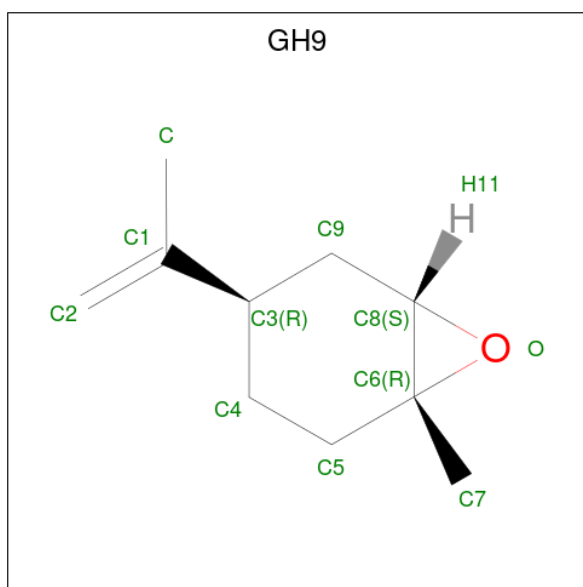
Mol	Chain	Residues	Atoms					ZeroOcc	AltConf	Trace
			Total	C	N	O	S			
1	AAA	137	Total 1276	C 799	N 219	O 251	S 7	0	30	0
1	BBB	137	Total 1291	C 806	N 223	O 254	S 8	0	32	0

- Molecule 2 is PROTOPORPHYRIN IX CONTAINING FE (three-letter code: HEM) (formula:  $C_{34}H_{32}FeN_4O_4$ ) (labeled as "Ligand of Interest" by depositor).



Mol	Chain	Residues	Atoms				ZeroOcc	AltConf	
			Total	C	Fe	N			O
2	AAA	1	Total 43	C 34	Fe 1	N 4	O 4	0	0
2	BBB	1	Total 43	C 34	Fe 1	N 4	O 4	0	0

- Molecule 3 is (1R,4R,6S)-1-methyl-4-(prop-1-en-2-yl)-7-oxabicyclo[4.1.0]heptane (three-letter code: GH9) (formula:  $C_{10}H_{16}O$ ) (labeled as "Ligand of Interest" by depositor).



Mol	Chain	Residues	Atoms			ZeroOcc	AltConf
3	AAA	1	Total	C	O	0	0
			11	10	1		
3	BBB	1	Total	C	O	0	0
			11	10	1		

- Molecule 4 is GLYCEROL (three-letter code: GOL) (formula:  $C_3H_8O_3$ ).



Mol	Chain	Residues	Atoms			ZeroOcc	AltConf
4	AAA	1	Total	C	O	0	0
			6	3	3		
4	BBB	1	Total	C	O	0	0
			6	3	3		

- Molecule 5 is SULFATE ION (three-letter code: SO4) (formula: O<sub>4</sub>S).



Mol	Chain	Residues	Atoms	ZeroOcc	AltConf
5	AAA	1	Total O S 5 4 1	0	0
5	AAA	1	Total O S 5 4 1	0	0
5	BBB	1	Total O S 5 4 1	0	0

- Molecule 6 is water.

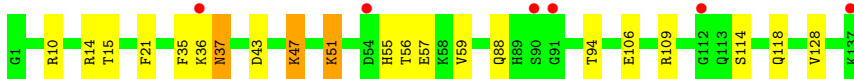
Mol	Chain	Residues	Atoms	ZeroOcc	AltConf
6	AAA	75	Total O 75 75	0	0
6	BBB	56	Total O 56 56	0	0

### 3 Residue-property plots [i](#)


These plots are drawn for all protein, RNA, DNA and oligosaccharide chains in the entry. The first graphic for a chain summarises the proportions of the various outlier classes displayed in the second graphic. The second graphic shows the sequence view annotated by issues in geometry and electron density. Residues are color-coded according to the number of geometric quality criteria for which they contain at least one outlier: green = 0, yellow = 1, orange = 2 and red = 3 or more. A red dot above a residue indicates a poor fit to the electron density ( $RSRZ > 2$ ). Stretches of 2 or more consecutive residues without any outlier are shown as a green connector. Residues present in the sample, but not in the model, are shown in grey.

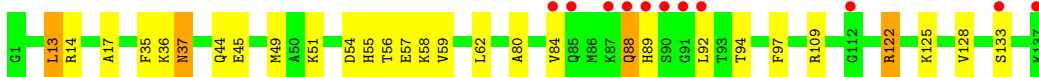
- Molecule 1: Dehaloperoxidase B

Chain AAA:  4% 85% 13%



- Molecule 1: Dehaloperoxidase B

Chain BBB:  8% 79% 18%



## 4 Data and refinement statistics i

Property	Value	Source
Space group	P 21 21 21	Depositor
Cell constants a, b, c, $\alpha$ , $\beta$ , $\gamma$	58.00Å 66.74Å 67.86Å 90.00° 90.00° 90.00°	Depositor
Resolution (Å)	36.81 – 1.57 36.79 – 1.54	Depositor EDS
% Data completeness (in resolution range)	93.5 (36.81-1.57) 93.5 (36.79-1.54)	Depositor EDS
$R_{merge}$	(Not available)	Depositor
$R_{sym}$	(Not available)	Depositor
$\langle I/\sigma(I) \rangle$ <sup>1</sup>	1.94 (at 1.54Å)	Xtrriage
Refinement program	REFMAC 5.8.0267	Depositor
R, $R_{free}$	0.143 , 0.218 0.152 , 0.223	Depositor DCC
$R_{free}$ test set	1800 reflections (4.85%)	wwPDB-VP
Wilson B-factor (Å <sup>2</sup> )	20.5	Xtrriage
Anisotropy	0.482	Xtrriage
Bulk solvent $k_{sol}$ (e/Å <sup>3</sup> ), $B_{sol}$ (Å <sup>2</sup> )	0.39 , 49.7	EDS
L-test for twinning <sup>2</sup>	$\langle  L  \rangle = 0.47$ , $\langle L^2 \rangle = 0.30$	Xtrriage
Estimated twinning fraction	0.038 for -h,l,k	Xtrriage
$F_o, F_c$ correlation	0.97	EDS
Total number of atoms	2833	wwPDB-VP
Average B, all atoms (Å <sup>2</sup> )	28.0	wwPDB-VP

Xtrriage's analysis on translational NCS is as follows: *The largest off-origin peak in the Patterson function is 8.41% of the height of the origin peak. No significant pseudotranslation is detected.*

<sup>1</sup>Intensities estimated from amplitudes.

<sup>2</sup>Theoretical values of  $\langle |L| \rangle$ ,  $\langle L^2 \rangle$  for acentric reflections are 0.5, 0.333 respectively for untwinned datasets, and 0.375, 0.2 for perfectly twinned datasets.



## 5 Model quality

### 5.1 Standard geometry

Bond lengths and bond angles in the following residue types are not validated in this section: GH9, HEM, GOL, SO4

The Z score for a bond length (or angle) is the number of standard deviations the observed value is removed from the expected value. A bond length (or angle) with  $|Z| > 5$  is considered an outlier worth inspection. RMSZ is the root-mean-square of all Z scores of the bond lengths (or angles).

Mol	Chain	Bond lengths		Bond angles	
		RMSZ	# Z  >5	RMSZ	# Z  >5
1	AAA	0.90	0/1335	0.91	0/1785
1	BBB	0.84	0/1344	0.92	0/1798
All	All	0.87	0/2679	0.91	0/3583

There are no bond length outliers.

There are no bond angle outliers.

There are no chirality outliers.

There are no planarity outliers.

### 5.2 Too-close contacts

In the following table, the Non-H and H(model) columns list the number of non-hydrogen atoms and hydrogen atoms in the chain respectively. The H(added) column lists the number of hydrogen atoms added and optimized by MolProbity. The Clashes column lists the number of clashes within the asymmetric unit, whereas Symm-Clashes lists symmetry-related clashes.

Mol	Chain	Non-H	H(model)	H(added)	Clashes	Symm-Clashes
1	AAA	1276	0	1262	48	0
1	BBB	1291	0	1256	51	0
2	AAA	43	0	30	10	0
2	BBB	43	0	30	12	0
3	AAA	11	0	0	26	0
3	BBB	11	0	0	30	0
4	AAA	6	0	8	0	0
4	BBB	6	0	8	4	0
5	AAA	10	0	0	0	0
5	BBB	5	0	0	0	0
6	AAA	75	0	0	7	0

*Continued on next page...*

Continued from previous page...

Mol	Chain	Non-H	H(model)	H(added)	Clashes	Symm-Clashes
6	BBB	56	0	0	7	0
All	All	2833	0	2594	113	0

The all-atom clashscore is defined as the number of clashes found per 1000 atoms (including hydrogen atoms). The all-atom clashscore for this structure is 21.

The worst 5 of 113 close contacts within the same asymmetric unit are listed below, sorted by their clash magnitude.

Atom-1	Atom-2	Interatomic distance (Å)	Clash overlap (Å)
1:BBB:55[A]:HIS:HB3	3:BBB:203:GH9:C9	1.10	1.56
1:BBB:55[A]:HIS:HB3	3:BBB:203:GH9:C3	1.40	1.47
1:BBB:55[A]:HIS:CB	3:BBB:203:GH9:C3	2.00	1.33
1:AAA:55[B]:HIS:HB3	3:AAA:202:GH9:C9	1.66	1.25
1:BBB:55[B]:HIS:C	3:BBB:203:GH9:C4	2.09	1.19

There are no symmetry-related clashes.

## 5.3 Torsion angles [i](#)

### 5.3.1 Protein backbone [i](#)

In the following table, the Percentiles column shows the percent Ramachandran outliers of the chain as a percentile score with respect to all X-ray entries followed by that with respect to entries of similar resolution.

The Analysed column shows the number of residues for which the backbone conformation was analysed, and the total number of residues.

Mol	Chain	Analysed	Favoured	Allowed	Outliers	Percentiles	
1	AAA	165/137 (120%)	156 (94%)	9 (6%)	0	100	100
1	BBB	167/137 (122%)	163 (98%)	4 (2%)	0	100	100
All	All	332/274 (121%)	319 (96%)	13 (4%)	0	100	100

There are no Ramachandran outliers to report.

### 5.3.2 Protein sidechains [i](#)

In the following table, the Percentiles column shows the percent sidechain outliers of the chain as a percentile score with respect to all X-ray entries followed by that with respect to entries of similar

resolution.

The Analysed column shows the number of residues for which the sidechain conformation was analysed, and the total number of residues.

Mol	Chain	Analysed	Rotameric	Outliers	Percentiles	
1	AAA	144/116 (124%)	134 (93%)	10 (7%)	15	2
1	BBB	143/116 (123%)	131 (92%)	12 (8%)	11	1
All	All	287/232 (124%)	265 (92%)	22 (8%)	20	2

5 of 22 residues with a non-rotameric sidechain are listed below:

Mol	Chain	Res	Type
1	BBB	37[B]	ASN
1	BBB	88[B]	GLN
1	BBB	88[A]	GLN
1	BBB	122[A]	ARG
1	AAA	114[A]	SER

Sometimes sidechains can be flipped to improve hydrogen bonding and reduce clashes. There are no such sidechains identified.

### 5.3.3 RNA [i](#)

There are no RNA molecules in this entry.

## 5.4 Non-standard residues in protein, DNA, RNA chains [i](#)

There are no non-standard protein/DNA/RNA residues in this entry.

## 5.5 Carbohydrates [i](#)

There are no monosaccharides in this entry.

## 5.6 Ligand geometry [i](#)

9 ligands are modelled in this entry.

In the following table, the Counts columns list the number of bonds (or angles) for which Mogul statistics could be retrieved, the number of bonds (or angles) that are observed in the model and the number of bonds (or angles) that are defined in the Chemical Component Dictionary. The Link column lists molecule types, if any, to which the group is linked. The Z score for a bond

length (or angle) is the number of standard deviations the observed value is removed from the expected value. A bond length (or angle) with  $|Z| > 2$  is considered an outlier worth inspection. RMSZ is the root-mean-square of all Z scores of the bond lengths (or angles).

Mol	Type	Chain	Res	Link	Bond lengths			Bond angles		
					Counts	RMSZ	# Z  > 2	Counts	RMSZ	# Z  > 2
5	SO4	AAA	204	-	4,4,4	0.69	0	6,6,6	0.49	0
5	SO4	BBB	204	-	4,4,4	0.30	0	6,6,6	0.27	0
5	SO4	AAA	205	-	4,4,4	0.28	0	6,6,6	0.29	0
4	GOL	BBB	201	-	5,5,5	0.26	0	5,5,5	0.68	0
2	HEM	BBB	202	1,6	41,50,50	1.79	12 (29%)	45,82,82	2.79	16 (35%)
3	GH9	BBB	203	-	12,12,12	0.37	0	19,19,19	1.63	3 (15%)
4	GOL	AAA	203	-	5,5,5	0.21	0	5,5,5	0.40	0
2	HEM	AAA	201	1	41,50,50	1.62	7 (17%)	45,82,82	2.43	17 (37%)
3	GH9	AAA	202	-	12,12,12	0.62	0	19,19,19	1.26	3 (15%)

In the following table, the Chirals column lists the number of chiral outliers, the number of chiral centers analysed, the number of these observed in the model and the number defined in the Chemical Component Dictionary. Similar counts are reported in the Torsion and Rings columns. '2' means no outliers of that kind were identified.

Mol	Type	Chain	Res	Link	Chirals	Torsions	Rings
4	GOL	BBB	201	-	-	2/4/4/4	-
2	HEM	BBB	202	1,6	-	3/12/54/54	-
3	GH9	BBB	203	-	-	2/4/22/22	0/2/2/2
4	GOL	AAA	203	-	-	2/4/4/4	-
2	HEM	AAA	201	1	-	8/12/54/54	-
3	GH9	AAA	202	-	-	1/4/22/22	0/2/2/2

The worst 5 of 19 bond length outliers are listed below:

Mol	Chain	Res	Type	Atoms	Z	Observed(Å)	Ideal(Å)
2	AAA	201	HEM	C1B-NB	-4.55	1.32	1.40
2	AAA	201	HEM	C4B-NB	-4.25	1.30	1.38
2	BBB	202	HEM	CHA-C4D	-4.16	1.24	1.35
2	BBB	202	HEM	C1A-NA	4.09	1.44	1.36
2	AAA	201	HEM	FE-NB	3.20	2.12	1.96

The worst 5 of 39 bond angle outliers are listed below:

Mol	Chain	Res	Type	Atoms	Z	Observed(°)	Ideal(°)
2	BBB	202	HEM	C3B-C2B-C1B	7.43	112.00	106.49

*Continued on next page...*

*Continued from previous page...*

Mol	Chain	Res	Type	Atoms	Z	Observed(°)	Ideal(°)
2	BBB	202	HEM	C4B-C3B-C2B	-7.37	101.26	107.11
2	AAA	201	HEM	CHD-C1D-C2D	-5.90	115.76	124.98
2	BBB	202	HEM	CHD-C1D-C2D	-5.52	116.35	124.98
2	AAA	201	HEM	C1B-NB-C4B	5.49	110.74	105.07

There are no chirality outliers.

5 of 18 torsion outliers are listed below:

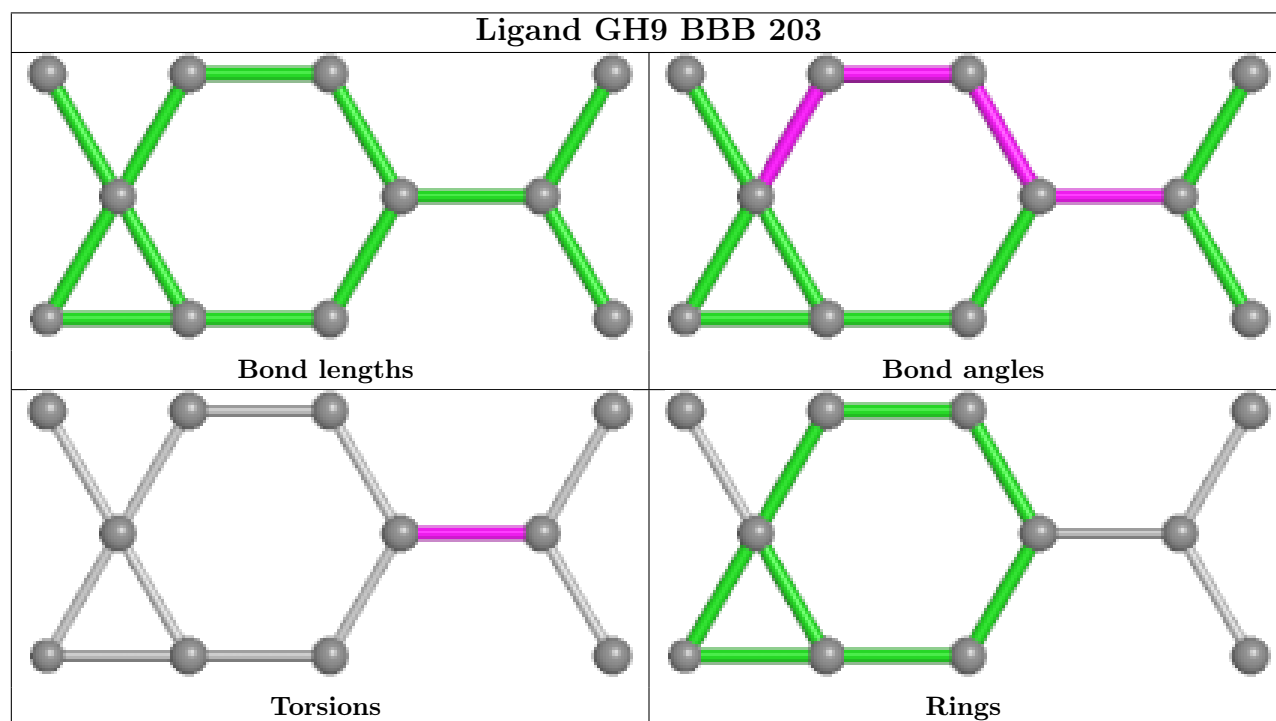
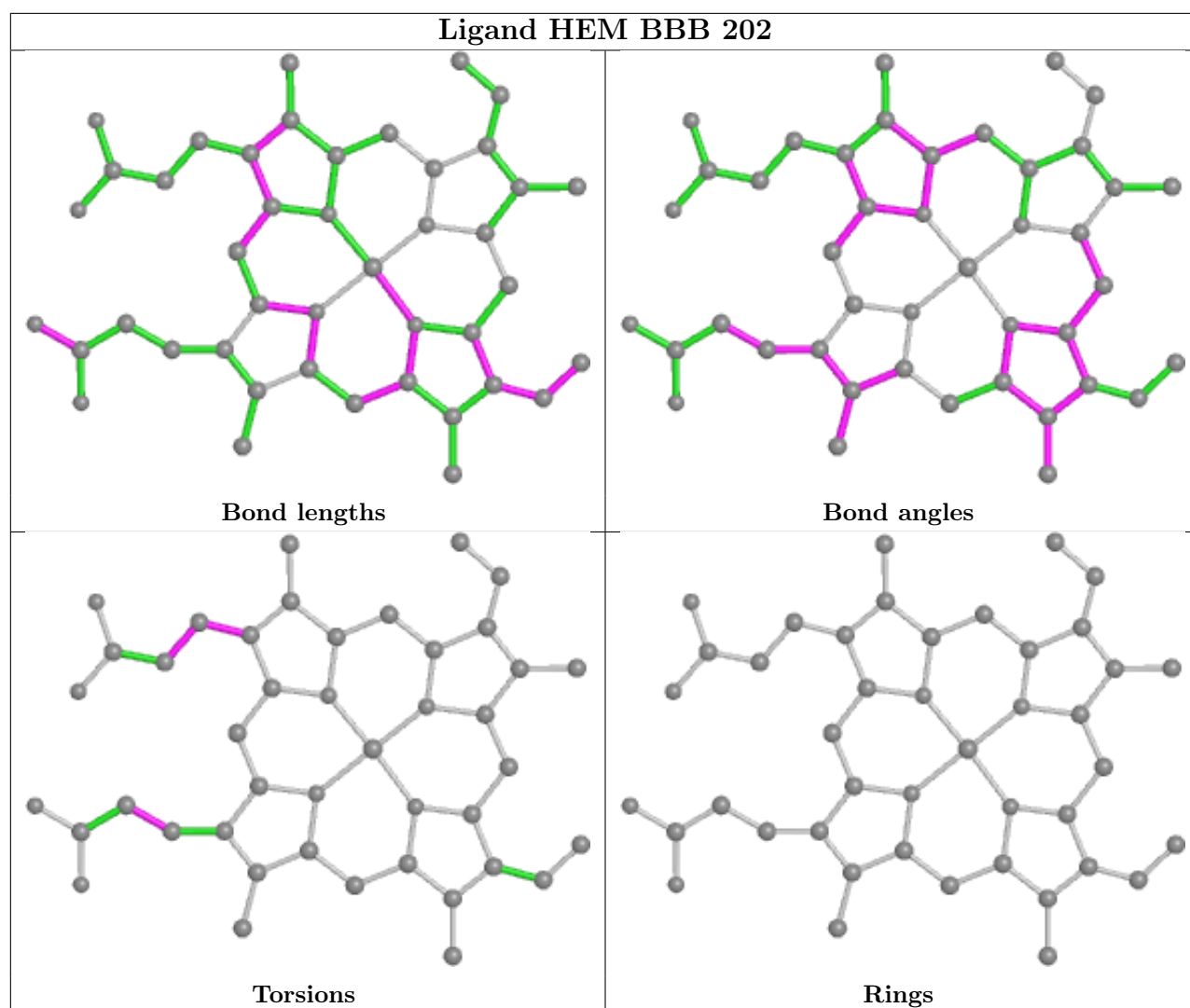
Mol	Chain	Res	Type	Atoms
4	AAA	203	GOL	C1-C2-C3-O3
2	AAA	201	HEM	C2D-C3D-CAD-CBD
4	AAA	203	GOL	O2-C2-C3-O3
2	BBB	202	HEM	C3D-CAD-CBD-CGD
4	BBB	201	GOL	C1-C2-C3-O3

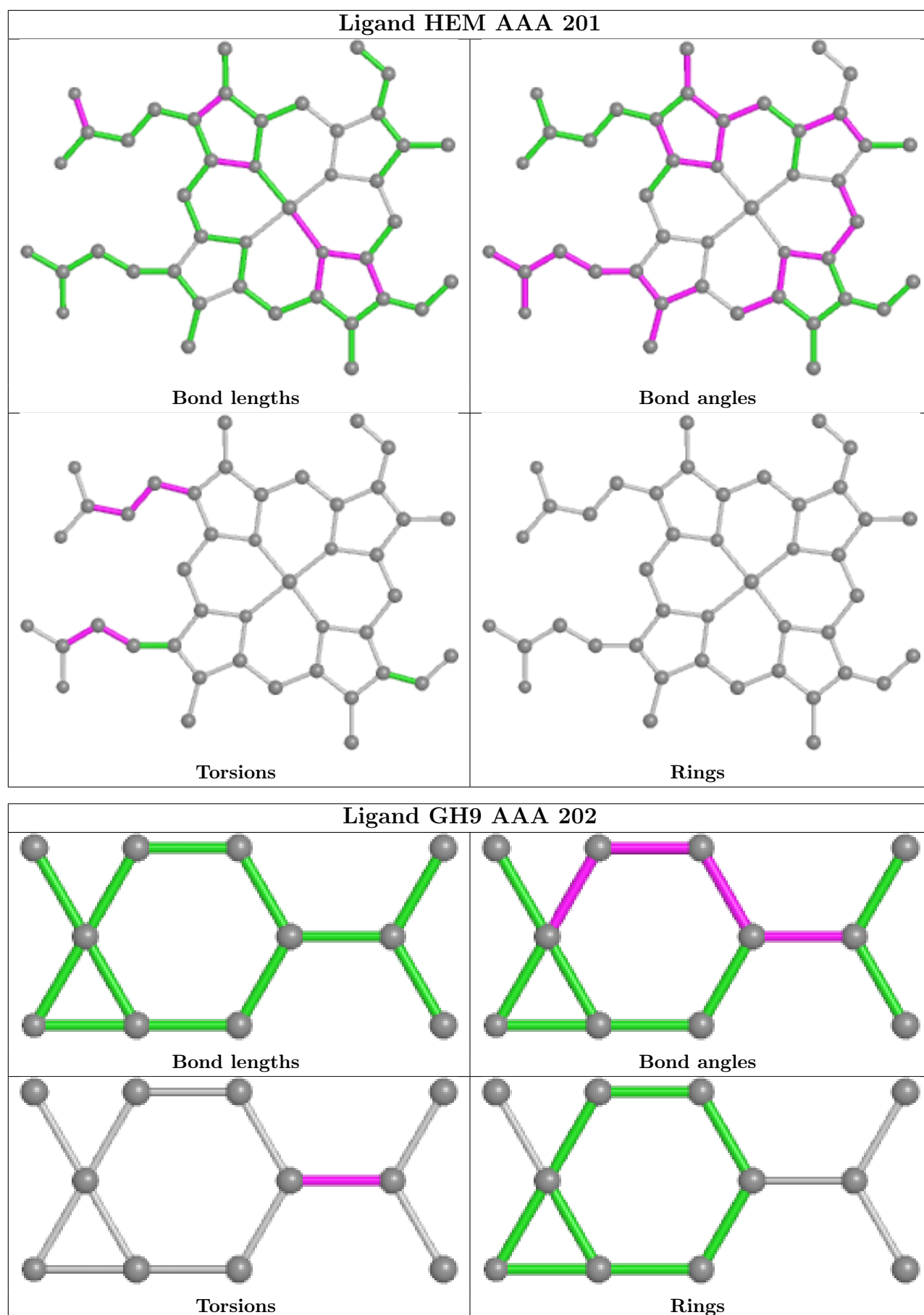
There are no ring outliers.

5 monomers are involved in 76 short contacts:

Mol	Chain	Res	Type	Clashes	Symm-Clashes
4	BBB	201	GOL	4	0
2	BBB	202	HEM	12	0
3	BBB	203	GH9	30	0
2	AAA	201	HEM	10	0
3	AAA	202	GH9	26	0

The following is a two-dimensional graphical depiction of Mogul quality analysis of bond lengths, bond angles, torsion angles, and ring geometry for all instances of the Ligand of Interest. In addition, ligands with molecular weight > 250 and outliers as shown on the validation Tables will also be included. For torsion angles, if less than 5% of the Mogul distribution of torsion angles is within 10 degrees of the torsion angle in question, then that torsion angle is considered an outlier. Any bond that is central to one or more torsion angles identified as an outlier by Mogul will be highlighted in the graph. For rings, the root-mean-square deviation (RMSD) between the ring in question and similar rings identified by Mogul is calculated over all ring torsion angles. If the average RMSD is greater than 60 degrees and the minimal RMSD between the ring in question and any Mogul-identified rings is also greater than 60 degrees, then that ring is considered an outlier. The outliers are highlighted in purple. The color gray indicates Mogul did not find sufficient equivalents in the CSD to analyse the geometry.





## 5.7 Other polymers

There are no such residues in this entry.

## 5.8 Polymer linkage issues

There are no chain breaks in this entry.



## 6 Fit of model and data [i](#)

### 6.1 Protein, DNA and RNA chains [i](#)

In the following table, the column labelled ‘#RSRZ > 2’ contains the number (and percentage) of RSRZ outliers, followed by percent RSRZ outliers for the chain as percentile scores relative to all X-ray entries and entries of similar resolution. The OWAB column contains the minimum, median, 95<sup>th</sup> percentile and maximum values of the occupancy-weighted average B-factor per residue. The column labelled ‘Q < 0.9’ lists the number of (and percentage) of residues with an average occupancy less than 0.9.

Mol	Chain	Analysed	<RSRZ>	#RSRZ>2	OWAB(Å <sup>2</sup> )	Q<0.9
1	AAA	137/137 (100%)	0.42	6 (4%) 34 34	15, 23, 42, 54	0
1	BBB	137/137 (100%)	0.62	11 (8%) 12 12	15, 24, 55, 75	0
All	All	274/274 (100%)	0.52	17 (6%) 20 20	15, 24, 47, 75	0

The worst 5 of 17 RSRZ outliers are listed below:

Mol	Chain	Res	Type	RSRZ
1	BBB	92	LEU	6.4
1	BBB	90[A]	SER	5.8
1	BBB	137	LYS	5.1
1	BBB	89	HIS	5.0
1	BBB	87[A]	LYS	4.2

### 6.2 Non-standard residues in protein, DNA, RNA chains [i](#)

There are no non-standard protein/DNA/RNA residues in this entry.

### 6.3 Carbohydrates [i](#)

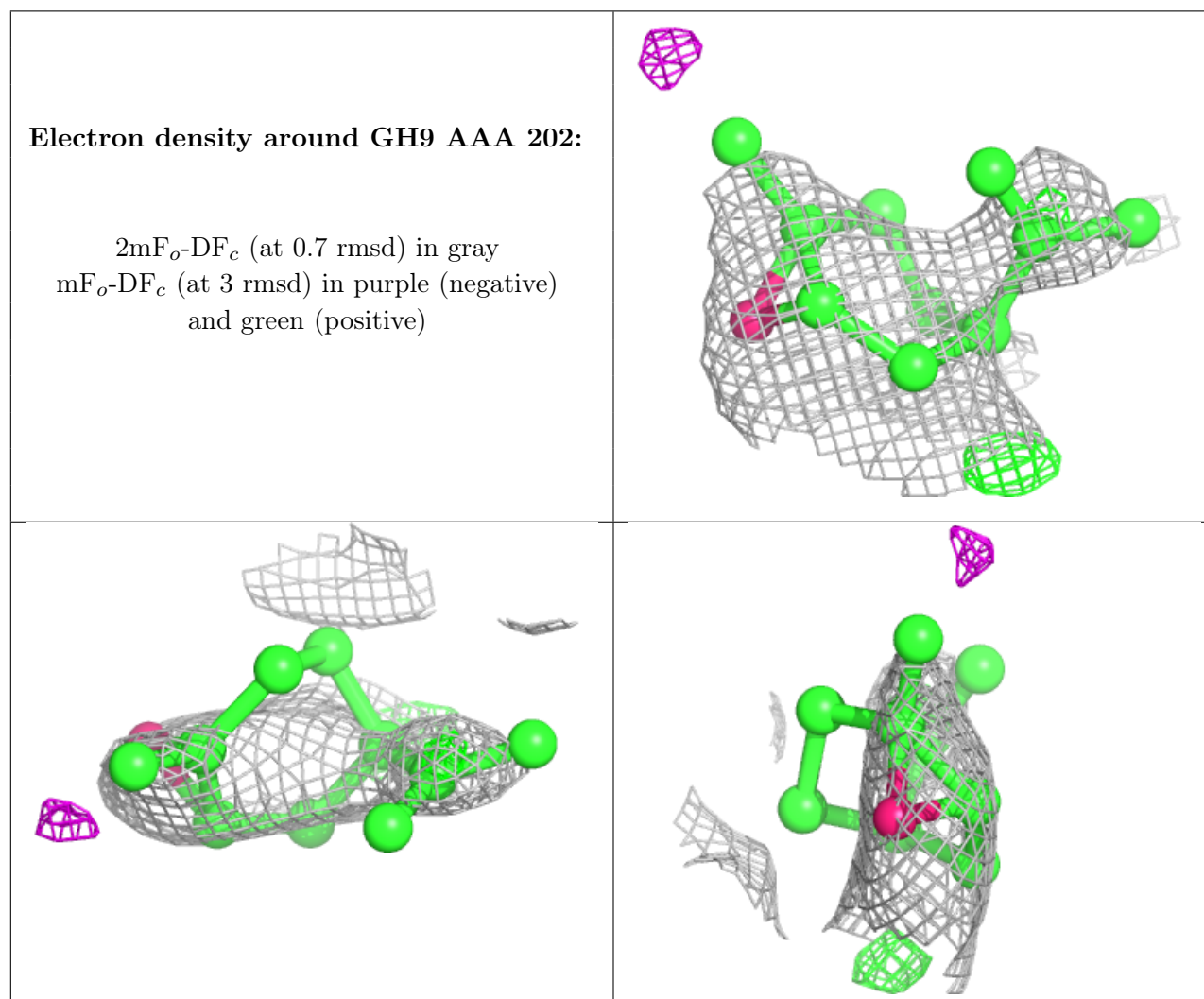
There are no monosaccharides in this entry.

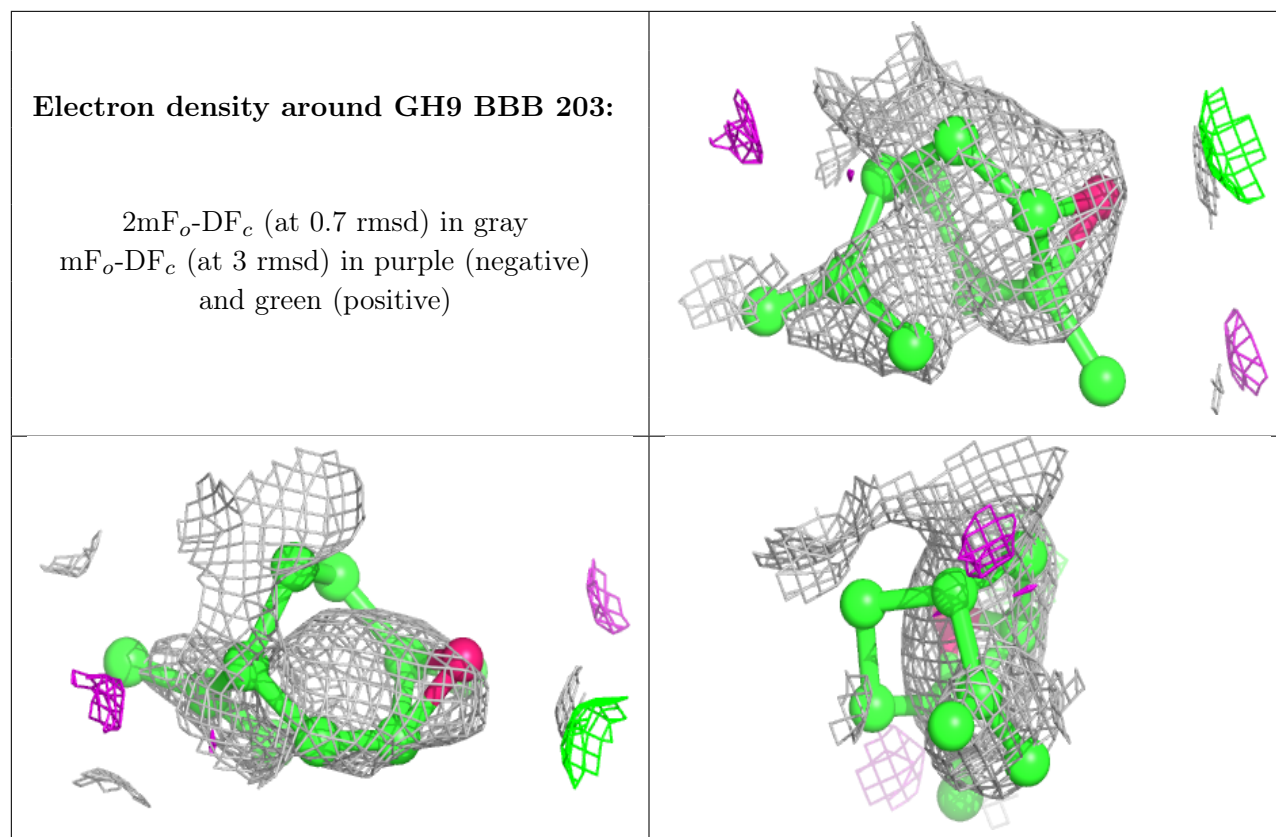
### 6.4 Ligands [i](#)

In the following table, the Atoms column lists the number of modelled atoms in the group and the number defined in the chemical component dictionary. The B-factors column lists the minimum, median, 95<sup>th</sup> percentile and maximum values of B factors of atoms in the group. The column labelled ‘Q < 0.9’ lists the number of atoms with occupancy less than 0.9.

Mol	Type	Chain	Res	Atoms	RSCC	RSR	B-factors( $\text{\AA}^2$ )	Q<0.9
3	GH9	AAA	202	11/11	0.89	0.34	30,32,39,41	11
3	GH9	BBB	203	11/11	0.90	0.43	29,39,44,44	11
4	GOL	AAA	203	6/6	0.91	0.23	23,39,44,44	0
4	GOL	BBB	201	6/6	0.91	0.18	28,38,45,45	0
5	SO4	BBB	204	5/5	0.91	0.11	20,48,56,58	5
2	HEM	BBB	202	43/43	0.93	0.20	17,34,78,90	1
2	HEM	AAA	201	43/43	0.94	0.14	20,30,55,70	1
5	SO4	AAA	205	5/5	0.99	0.06	29,32,35,40	0
5	SO4	AAA	204	5/5	0.99	0.07	23,26,28,31	0

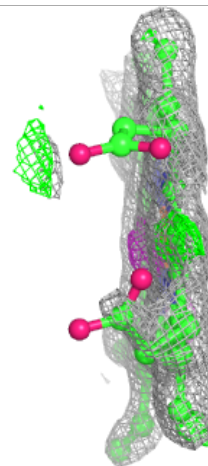
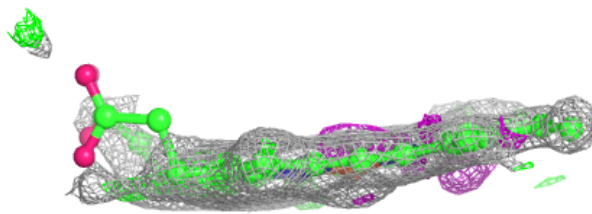
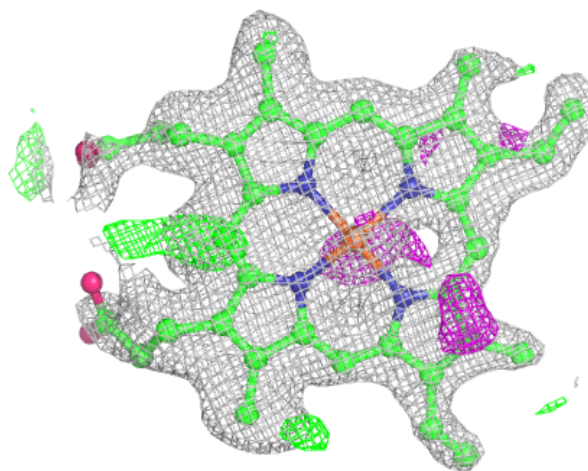
The following is a graphical depiction of the model fit to experimental electron density of all instances of the Ligand of Interest. In addition, ligands with molecular weight > 250 and outliers as shown on the geometry validation Tables will also be included. Each fit is shown from different orientation to approximate a three-dimensional view.

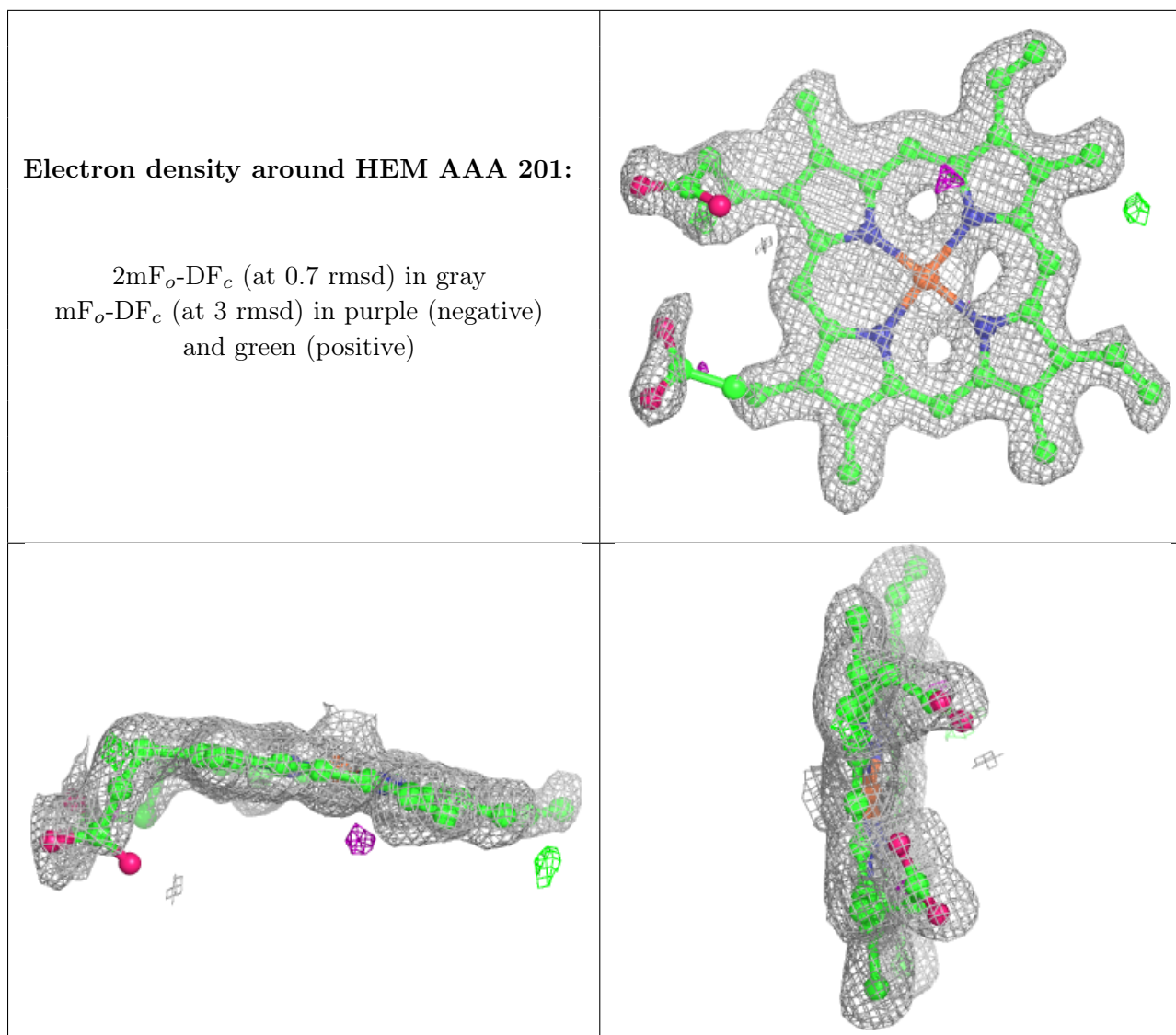




**Electron density around HEM BBB 202:**

$2mF_o-DF_c$  (at 0.7 rmsd) in gray  
 $mF_o-DF_c$  (at 3 rmsd) in purple (negative)  
and green (positive)





## 6.5 Other polymers [i](#)

There are no such residues in this entry.