



Full wwPDB X-ray Structure Validation Report ⓘ

Sep 17, 2024 – 02:08 PM EDT

PDB ID : 8TDR
Title : Crystal structure of the methyltransferase domain of DNMT3A homotetramer
Authors : Lu, J.W.; Song, J.K.
Deposited on : 2023-07-04
Resolution : 3.32 Å(reported)

This is a Full wwPDB X-ray Structure Validation Report for a publicly released PDB entry.

We welcome your comments at validation@mail.wwpdb.org

A user guide is available at

<https://www.wwpdb.org/validation/2017/XrayValidationReportHelp>

with specific help available everywhere you see the ⓘ symbol.

The types of validation reports are described at

<http://www.wwpdb.org/validation/2017/FAQs#types>.

The following versions of software and data (see [references ⓘ](#)) were used in the production of this report:

MolProbity : 4.02b-467
Mogul : 2022.3.0, CSD as543be (2022)
Xtriage (Phenix) : 1.20.1
EDS : 3.0
buster-report : 1.1.7 (2018)
Percentile statistics : 20231227.v01 (using entries in the PDB archive December 27th 2023)
CCP4 : 9.0.002 (Gargrove)
Density-Fitness : 1.0.11
Ideal geometry (proteins) : Engh & Huber (2001)
Ideal geometry (DNA, RNA) : Parkinson et al. (1996)
Validation Pipeline (wwPDB-VP) : 2.38.3

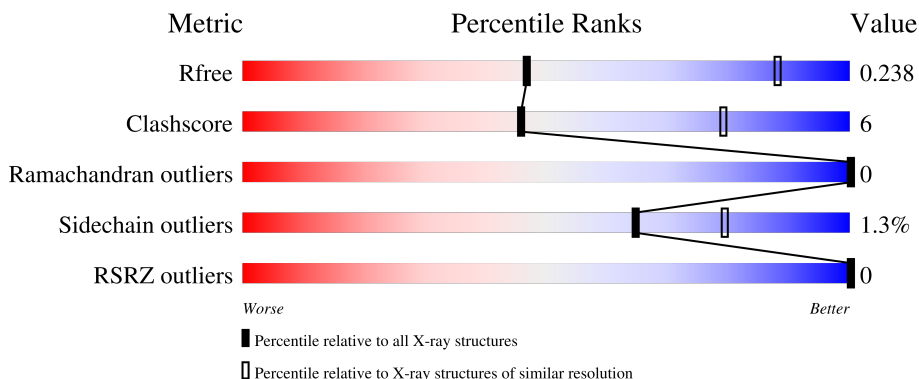
1 Overall quality at a glance

The following experimental techniques were used to determine the structure:

X-RAY DIFFRACTION

The reported resolution of this entry is 3.32 Å.

Percentile scores (ranging between 0-100) for global validation metrics of the entry are shown in the following graphic. The table shows the number of entries on which the scores are based.






Metric	Whole archive (#Entries)	Similar resolution (#Entries, resolution range(Å))
R_{free}	164625	1066 (3.34-3.30)
Clashscore	180529	1111 (3.34-3.30)
Ramachandran outliers	177936	1109 (3.34-3.30)
Sidechain outliers	177891	1108 (3.34-3.30)
RSRZ outliers	164620	1066 (3.34-3.30)

The table below summarises the geometric issues observed across the polymeric chains and their fit to the electron density. The red, orange, yellow and green segments of the lower bar indicate the fraction of residues that contain outliers for ≥ 3 , 2, 1 and 0 types of geometric quality criteria respectively. A grey segment represents the fraction of residues that are not modelled. The numeric value for each fraction is indicated below the corresponding segment, with a dot representing fractions $\leq 5\%$. The upper red bar (where present) indicates the fraction of residues that have poor fit to the electron density. The numeric value is given above the bar.

Mol	Chain	Length	Quality of chain
1	A	287	83% 13% 5%
1	B	287	82% 14% 5%
1	C	287	83% 12% 5%
1	D	287	83% 13% .
1	E	287	54% 8% . 37%

Continued on next page...

Continued from previous page...

Mol	Chain	Length	Quality of chain
1	F	287	 51% 10% 38%
1	G	287	 53% 9% 38%
1	H	287	 55% 10% 34%

2 Entry composition

There are 2 unique types of molecules in this entry. The entry contains 14431 atoms, of which 0 are hydrogens and 0 are deuteriums.

In the tables below, the ZeroOcc column contains the number of atoms modelled with zero occupancy, the AltConf column contains the number of residues with at least one atom in alternate conformation and the Trace column contains the number of residues modelled with at most 2 atoms.

- Molecule 1 is a protein called DNA (cytosine-5)-methyltransferase 3A.

Mol	Chain	Residues	Atoms					ZeroOcc	AltConf	Trace
			Total	C	N	O	S			
1	A	273	Total 2193	C 1403	N 390	O 387	S 13	0	3	0
1	B	274	Total 2195	C 1406	N 390	O 386	S 13	0	2	0
1	C	274	Total 2195	C 1406	N 391	O 385	S 13	0	2	0
1	E	180	Total 1349	C 873	N 231	O 238	S 7	0	0	0
1	H	188	Total 1426	C 921	N 248	O 250	S 7	0	0	0
1	F	178	Total 1373	C 891	N 233	O 242	S 7	0	0	0
1	D	275	Total 2208	C 1412	N 394	O 389	S 13	0	2	0
1	G	178	Total 1388	C 903	N 240	O 237	S 8	0	1	0

There are 16 discrepancies between the modelled and reference sequences:

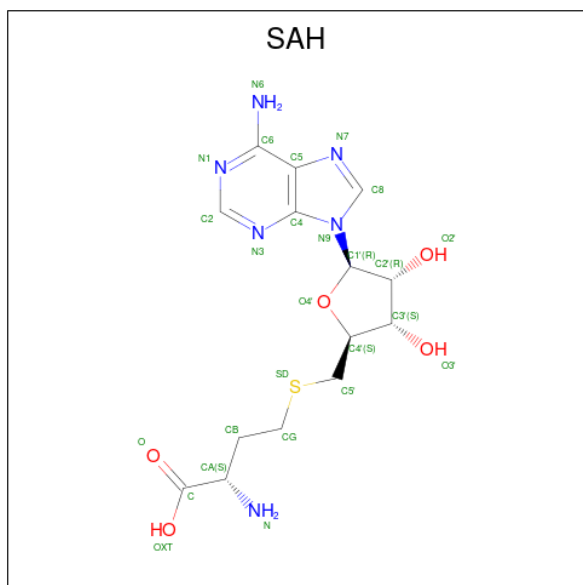
Chain	Residue	Modelled	Actual	Comment	Reference
A	626	GLY	-	expression tag	UNP Q9Y6K1
A	627	SER	-	expression tag	UNP Q9Y6K1
B	626	GLY	-	expression tag	UNP Q9Y6K1
B	627	SER	-	expression tag	UNP Q9Y6K1
C	626	GLY	-	expression tag	UNP Q9Y6K1
C	627	SER	-	expression tag	UNP Q9Y6K1
E	626	GLY	-	expression tag	UNP Q9Y6K1
E	627	SER	-	expression tag	UNP Q9Y6K1
H	626	GLY	-	expression tag	UNP Q9Y6K1
H	627	SER	-	expression tag	UNP Q9Y6K1
F	626	GLY	-	expression tag	UNP Q9Y6K1
F	627	SER	-	expression tag	UNP Q9Y6K1
D	626	GLY	-	expression tag	UNP Q9Y6K1

Continued on next page...

Continued from previous page...

Chain	Residue	Modelled	Actual	Comment	Reference
D	627	SER	-	expression tag	UNP Q9Y6K1
G	626	GLY	-	expression tag	UNP Q9Y6K1
G	627	SER	-	expression tag	UNP Q9Y6K1

- Molecule 2 is S-ADENOSYL-L-HOMOCYSTEINE (three-letter code: SAH) (formula: $C_{14}H_{20}N_6O_5S$) (labeled as "Ligand of Interest" by depositor).

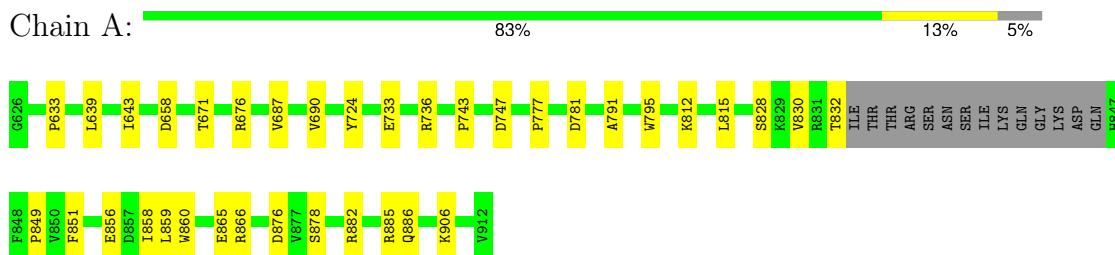


Mol	Chain	Residues	Atoms					ZeroOcc	AltConf
			Total	C	N	O	S		
2	A	1	Total	C	N	O	S	0	0
			26	14	6	5	1		
2	B	1	Total	C	N	O	S	0	0
			26	14	6	5	1		
2	C	1	Total	C	N	O	S	0	0
			26	14	6	5	1		
2	D	1	Total	C	N	O	S	0	0
			26	14	6	5	1		

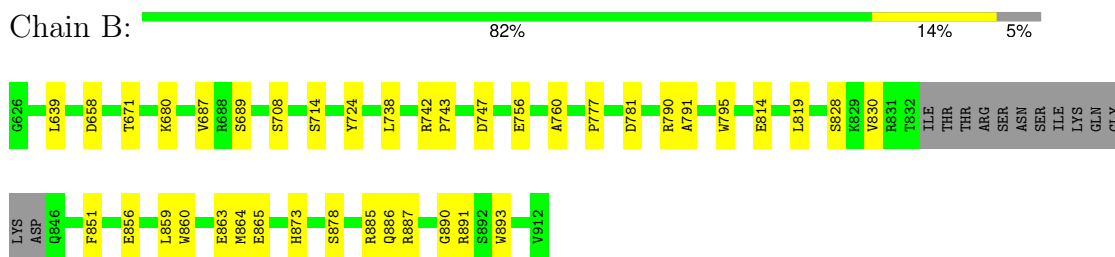
3 Residue-property plots [i](#)

These plots are drawn for all protein, RNA, DNA and oligosaccharide chains in the entry. The first graphic for a chain summarises the proportions of the various outlier classes displayed in the second graphic. The second graphic shows the sequence view annotated by issues in geometry and electron density. Residues are color-coded according to the number of geometric quality criteria for which they contain at least one outlier: green = 0, yellow = 1, orange = 2 and red = 3 or more. A red dot above a residue indicates a poor fit to the electron density ($RSRZ > 2$). Stretches of 2 or more consecutive residues without any outlier are shown as a green connector. Residues present in the sample, but not in the model, are shown in grey.

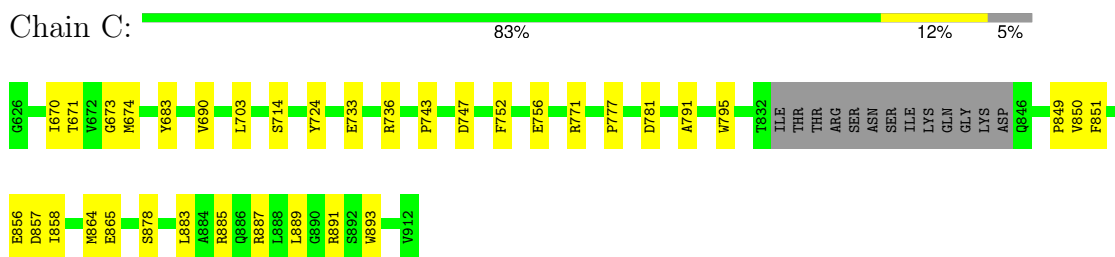
- Molecule 1: DNA (cytosine-5)-methyltransferase 3A



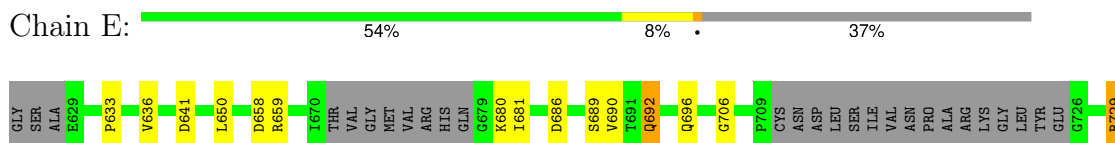
- Molecule 1: DNA (cytosine-5)-methyltransferase 3A

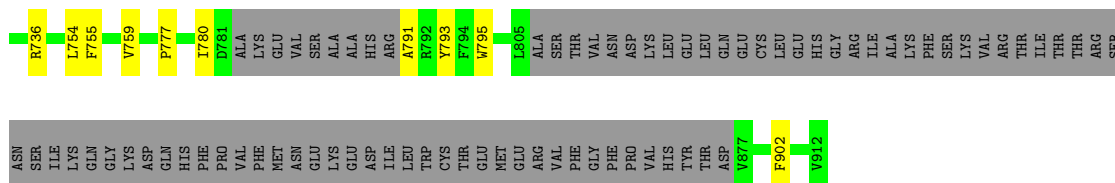


- Molecule 1: DNA (cytosine-5)-methyltransferase 3A



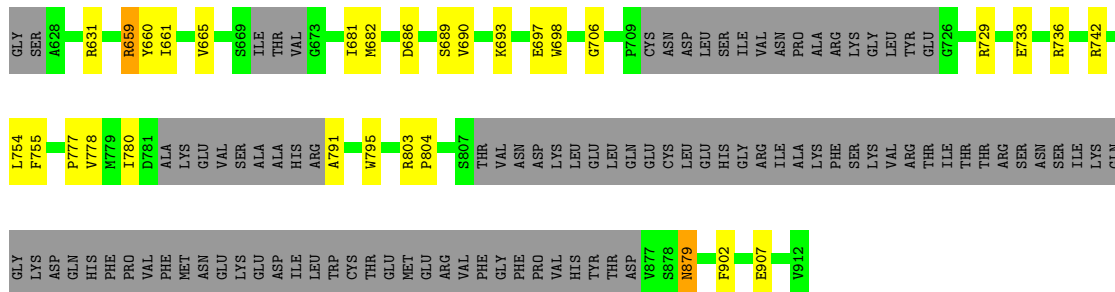
- Molecule 1: DNA (cytosine-5)-methyltransferase 3A





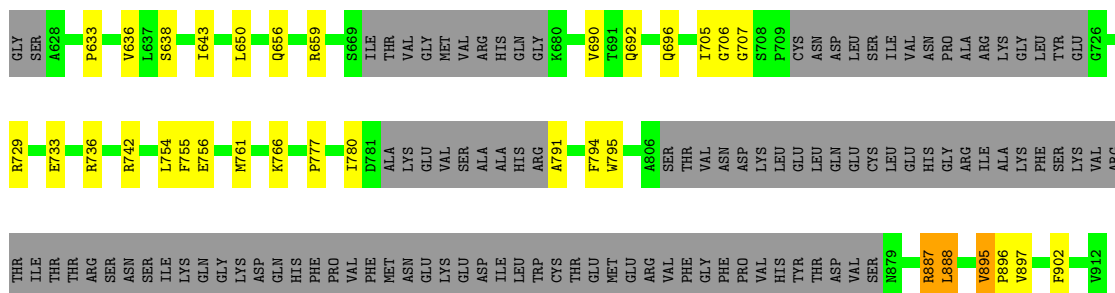
- Molecule 1: DNA (cytosine-5)-methyltransferase 3A

Chain H: 55% 10% 34%



- Molecule 1: DNA (cytosine-5)-methyltransferase 3A

Chain F: 51% 10% 38%



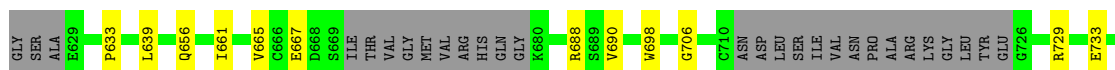
- Molecule 1: DNA (cytosine-5)-methyltransferase 3A

Chain D: 83% 13%



- Molecule 1: DNA (cytosine-5)-methyltransferase 3A

Chain G: 53% 9% 38%



R736	THR
L737	ARG
	SER
R742	ASN
	SER
F755	ILE
	LYS
V759	GLN
	GLY
P777	LYS
	ASP
I780	GLN
	HIS
	PHE
	PRO
	VAL
	PHE
	MET
	ASN
	GLU
	LYS
	GLU
A791	ASP
	ILE
	LEU
	TRP
	CYS
G800	THR
	THR
R803	GLU
	MET
P804	GLU
I805	ARG
	ALA
	SER
	THR
	VAL
	GLY
	ASN
	ASN
	ASP
	LYS
	LEU
	GLU
	LEU
	GLN
	GLU
	CYS
	LEU
	GLU
	HIS
	GLY
	ARG
	ILE
	ALA
	LYS
	PHE
	SER
	LYS
	VAL
	ARG
	THR
	ILE
	THR

	THR
	ARG
	SER
	ASN
	SER
	ILE
	LYS
	GLN
	GLY
	LYS
	ASP
	GLN
	HIS
	PHE
	PRO
	VAL
	PHE
	MET
	ASN
	GLU
	LYS
	GLU
	ASP
	ILE
	LEU
	TRP
	CYS
	THR
	THR
	GLU
	MET
	GLU
	ARG
	VAL
	PHE
	GLY
	PHE
	PHE
	PRO
	VAL
	HIS
	TYR
	THR
	ASP
	ASP
V877	THR
	THR
A903	THR
	THR
K906	THR
	THR
V912	THR

4 Data and refinement statistics i

Property	Value	Source
Space group	P 3	Depositor
Cell constants a, b, c, α , β , γ	179.43Å 179.43Å 108.06Å 90.00° 90.00° 120.00°	Depositor
Resolution (Å)	46.29 – 3.32 46.29 – 3.32	Depositor EDS
% Data completeness (in resolution range)	99.4 (46.29-3.32) 99.4 (46.29-3.32)	Depositor EDS
R_{merge}	0.22	Depositor
R_{sym}	(Not available)	Depositor
$\langle I/\sigma(I) \rangle$ ¹	1.15 (at 3.32Å)	Xtriage
Refinement program	PHENIX 1.20.1_4487	Depositor
R, R_{free}	0.210 , 0.240 0.211 , 0.238	Depositor DCC
R_{free} test set	55056 reflections (3.51%)	wwPDB-VP
Wilson B-factor (Å ²)	84.8	Xtriage
Anisotropy	0.068	Xtriage
Bulk solvent k_{sol} (e/Å ³), B_{sol} (Å ²)	0.26 , 32.2	EDS
L-test for twinning ²	$\langle L \rangle = 0.45$, $\langle L^2 \rangle = 0.27$	Xtriage
Estimated twinning fraction	0.398 for -h,-k,l 0.399 for h,-h-k,-l 0.397 for -k,-h,-l	Xtriage
F_o, F_c correlation	0.94	EDS
Total number of atoms	14431	wwPDB-VP
Average B, all atoms (Å ²)	81.0	wwPDB-VP

Xtriage's analysis on translational NCS is as follows: *The largest off-origin peak in the Patterson function is 3.68% of the height of the origin peak. No significant pseudotranslation is detected.*

¹Intensities estimated from amplitudes.

²Theoretical values of $\langle |L| \rangle$, $\langle L^2 \rangle$ for acentric reflections are 0.5, 0.333 respectively for untwinned datasets, and 0.375, 0.2 for perfectly twinned datasets.

5 Model quality [i](#)

5.1 Standard geometry [i](#)

Bond lengths and bond angles in the following residue types are not validated in this section: SAH

The Z score for a bond length (or angle) is the number of standard deviations the observed value is removed from the expected value. A bond length (or angle) with $|Z| > 5$ is considered an outlier worth inspection. RMSZ is the root-mean-square of all Z scores of the bond lengths (or angles).

Mol	Chain	Bond lengths		Bond angles	
		RMSZ	# Z >5	RMSZ	# Z >5
1	A	0.30	0/2258	0.52	0/3051
1	B	0.26	0/2254	0.51	0/3044
1	C	0.25	0/2254	0.50	0/3045
1	D	0.29	0/2267	0.55	0/3062
1	E	0.26	0/1380	0.51	0/1871
1	F	0.28	0/1404	0.54	0/1898
1	G	0.25	0/1422	0.52	0/1920
1	H	0.26	0/1458	0.54	0/1972
All	All	0.27	0/14697	0.52	0/19863

There are no bond length outliers.

There are no bond angle outliers.

There are no chirality outliers.

There are no planarity outliers.

5.2 Too-close contacts [i](#)

In the following table, the Non-H and H(model) columns list the number of non-hydrogen atoms and hydrogen atoms in the chain respectively. The H(added) column lists the number of hydrogen atoms added and optimized by MolProbity. The Clashes column lists the number of clashes within the asymmetric unit, whereas Symm-Clashes lists symmetry-related clashes.

Mol	Chain	Non-H	H(model)	H(added)	Clashes	Symm-Clashes
1	A	2193	0	2155	23	0
1	B	2195	0	2157	24	0
1	C	2195	0	2158	23	0
1	D	2208	0	2173	26	0
1	E	1349	0	1235	15	0

Continued on next page...

Continued from previous page...

Mol	Chain	Non-H	H(model)	H(added)	Clashes	Symm-Clashes
1	F	1373	0	1310	27	0
1	G	1388	0	1350	16	0
1	H	1426	0	1350	20	0
2	A	26	0	19	0	0
2	B	26	0	19	0	0
2	C	26	0	19	0	0
2	D	26	0	19	1	0
All	All	14431	0	13964	162	0

The all-atom clashscore is defined as the number of clashes found per 1000 atoms (including hydrogen atoms). The all-atom clashscore for this structure is 6.

All (162) close contacts within the same asymmetric unit are listed below, sorted by their clash magnitude.

Atom-1	Atom-2	Interatomic distance (Å)	Clash overlap (Å)
1:F:895:VAL:HG22	1:F:896:PRO:CD	1.70	1.20
1:F:895:VAL:HG22	1:F:896:PRO:HD2	1.04	1.01
1:F:895:VAL:CG2	1:F:896:PRO:CD	2.54	0.84
1:F:895:VAL:CG2	1:F:896:PRO:HD2	2.00	0.81
1:A:849:PRO:HD2	1:A:858:ILE:HA	1.62	0.79
1:D:849:PRO:HD2	1:D:858:ILE:HA	1.67	0.76
1:H:780:ILE:O	1:H:791:ALA:HA	1.85	0.75
1:D:742[A]:ARG:HG2	1:D:742[A]:ARG:HH11	1.52	0.75
1:C:733:GLU:OE1	1:C:736:ARG:NH1	2.25	0.69
1:D:712:ASP:HB2	1:D:727:THR:HG22	1.73	0.69
1:D:733:GLU:OE1	1:D:736:ARG:NH1	2.25	0.69
1:C:690:VAL:O	1:C:736:ARG:NH2	2.26	0.69
1:H:660:TYR:HB3	1:H:681:ILE:HG13	1.73	0.68
1:A:733:GLU:OE1	1:A:736:ARG:NH1	2.27	0.67
1:G:780:ILE:O	1:G:791:ALA:HA	1.94	0.67
1:D:690:VAL:O	1:D:736:ARG:NH2	2.28	0.66
1:B:790:ARG:NH2	1:B:890:GLY:O	2.28	0.66
1:F:895:VAL:HG22	1:F:896:PRO:HD3	1.75	0.65
1:D:790:ARG:NH2	1:D:890:GLY:O	2.29	0.65
1:E:690:VAL:O	1:E:736:ARG:NH2	2.30	0.65
1:A:690:VAL:O	1:A:736:ARG:NH2	2.30	0.64
1:F:780:ILE:O	1:F:791:ALA:HA	1.99	0.63
1:C:849:PRO:HD2	1:C:858:ILE:HA	1.81	0.62
1:G:639:LEU:HD21	1:G:665:VAL:HG23	1.80	0.62
1:H:690:VAL:O	1:H:736:ARG:NH2	2.34	0.60
1:F:690:VAL:O	1:F:736:ARG:NH2	2.35	0.59

Continued on next page...

Continued from previous page...

Atom-1	Atom-2	Interatomic distance (Å)	Clash overlap (Å)
1:C:771:ARG:NH2	1:H:733:GLU:OE1	2.36	0.59
1:A:639:LEU:HD22	1:A:687:VAL:HG23	1.85	0.58
1:G:690:VAL:O	1:G:736:ARG:NH2	2.36	0.58
1:B:743:PRO:HB2	1:B:747:ASP:HB3	1.85	0.58
1:F:895:VAL:CG2	1:F:896:PRO:HD3	2.33	0.58
1:A:633:PRO:HB2	1:A:658:ASP:HB2	1.84	0.58
1:H:778:VAL:HG22	1:H:803:ARG:HG3	1.85	0.57
1:B:814:GLU:OE1	1:B:828:SER:OG	2.24	0.56
1:G:661:ILE:HD13	1:G:698:TRP:HB3	1.88	0.56
1:C:671:THR:HG21	1:C:878:SER:HB2	1.88	0.55
1:H:693:LYS:O	1:H:697:GLU:HG3	2.06	0.55
1:G:667:GLU:HA	1:G:688:ARG:HH21	1.71	0.55
1:E:777:PRO:HB3	1:E:795:TRP:CE2	2.41	0.55
1:E:636:VAL:HG21	1:E:650:LEU:HD11	1.89	0.55
1:E:681:ILE:N	1:E:681:ILE:HD12	2.22	0.54
1:A:781:ASP:HA	1:A:791:ALA:HA	1.90	0.54
1:A:812:LYS:HE2	1:A:866[B]:ARG:HH11	1.73	0.54
1:G:777:PRO:HB3	1:G:795:TRP:CE2	2.43	0.54
1:B:658:ASP:O	1:H:631:ARG:NH2	2.40	0.54
1:D:781:ASP:HA	1:D:791:ALA:HA	1.91	0.53
1:C:781:ASP:HA	1:C:791:ALA:HA	1.90	0.53
1:H:706:GLY:O	1:H:755:PHE:HA	2.09	0.53
1:F:777:PRO:HB3	1:F:795:TRP:CE2	2.44	0.53
1:D:742[A]:ARG:HH11	1:D:742[A]:ARG:CG	2.20	0.52
1:G:633:PRO:HB3	1:G:656:GLN:HB3	1.92	0.51
1:A:815:LEU:HD11	1:A:859:LEU:HD21	1.90	0.51
1:B:689:SER:HB2	1:H:804:PRO:HD2	1.93	0.51
1:G:639:LEU:HD12	1:G:737:LEU:HD12	1.92	0.51
1:D:640:PHE:HB3	2:D:1001:SAH:O4'	2.11	0.51
1:B:680:LYS:NZ	1:H:907:GLU:OE1	2.36	0.51
1:C:743:PRO:HB2	1:C:747:ASP:HB3	1.92	0.50
1:D:812:LYS:HE2	1:D:866[B]:ARG:HH11	1.77	0.50
1:A:830:VAL:HG22	1:A:832:THR:H	1.77	0.50
1:B:671:THR:HG21	1:B:878:SER:HB2	1.93	0.50
1:G:688:ARG:CZ	1:G:729:ARG:HH21	2.25	0.50
1:H:659:ARG:HH21	1:H:682:MET:HE1	1.78	0.49
1:F:887:ARG:O	1:F:887:ARG:HG2	2.11	0.49
1:E:754:LEU:HD13	1:E:902:PHE:CE1	2.47	0.49
1:B:756:GLU:OE1	1:B:893:TRP:NE1	2.39	0.49
1:F:636:VAL:HG21	1:F:650:LEU:HD11	1.94	0.49
1:A:743:PRO:HB2	1:A:747:ASP:HB3	1.96	0.48

Continued on next page...

Continued from previous page...

Atom-1	Atom-2	Interatomic distance (Å)	Clash overlap (Å)
1:H:777:PRO:HB3	1:H:795:TRP:CE2	2.49	0.48
1:E:759:VAL:HG23	1:E:793:TYR:CZ	2.48	0.48
1:E:633:PRO:HB2	1:E:658:ASP:HB2	1.95	0.48
1:F:633:PRO:HB3	1:F:656:GLN:HB3	1.95	0.48
1:D:756:GLU:OE1	1:D:893:TRP:NE1	2.38	0.48
1:G:706:GLY:O	1:G:755:PHE:HA	2.14	0.48
1:B:738:LEU:O	1:B:742[B]:ARG:HG2	2.14	0.47
1:F:706:GLY:O	1:F:755:PHE:HA	2.15	0.47
1:G:733:GLU:OE1	1:G:736:ARG:NH1	2.47	0.47
1:D:851:PHE:CE1	1:D:856:GLU:HG2	2.49	0.47
1:B:865:GLU:OE2	1:B:885:ARG:NH2	2.47	0.47
1:C:724:TYR:CD2	1:H:729:ARG:HA	2.48	0.47
1:B:878:SER:O	1:B:878:SER:OG	2.26	0.47
1:C:851:PHE:CE1	1:C:856:GLU:HG2	2.49	0.47
1:B:781:ASP:HA	1:B:791:ALA:HA	1.97	0.47
1:B:830:VAL:HG21	1:B:859:LEU:HD11	1.97	0.47
1:D:659:ARG:HB2	1:D:682:MET:HE1	1.96	0.47
1:B:887:ARG:O	1:B:891:ARG:HG3	2.15	0.46
1:H:754:LEU:HD13	1:H:902:PHE:CE1	2.50	0.46
1:A:882:ARG:O	1:A:886:GLN:HG3	2.15	0.46
1:B:851:PHE:CE1	1:B:856:GLU:HG2	2.51	0.46
1:C:865:GLU:OE2	1:C:885:ARG:NH2	2.48	0.46
1:E:780:ILE:O	1:E:791:ALA:HA	2.16	0.46
1:A:643:ILE:HG13	1:A:643:ILE:O	2.16	0.46
1:A:724:TYR:CD1	1:F:729:ARG:HA	2.51	0.46
1:D:777:PRO:HB3	1:D:795:TRP:CE2	2.51	0.46
1:D:848:PHE:HB3	1:D:856:GLU:HB3	1.97	0.46
1:A:777:PRO:HB3	1:A:795:TRP:CE2	2.51	0.46
1:A:865:GLU:OE2	1:A:885:ARG:NH2	2.47	0.46
1:E:706:GLY:O	1:E:755:PHE:HA	2.16	0.46
1:D:671:THR:HG21	1:D:878:SER:HB2	1.98	0.45
1:B:724:TYR:CD2	1:E:729:ARG:HA	2.51	0.45
1:C:851:PHE:HE1	1:C:856:GLU:HG2	1.81	0.45
1:C:864:MET:HB3	1:C:889:LEU:HD13	1.98	0.45
1:D:643:ILE:O	1:D:643:ILE:HG13	2.16	0.45
1:D:865:GLU:OE2	1:D:885:ARG:NH2	2.48	0.45
1:D:883:LEU:HD23	1:D:883:LEU:HA	1.86	0.45
1:B:777:PRO:HB3	1:B:795:TRP:CE2	2.52	0.45
1:A:671:THR:HG21	1:A:878:SER:HB2	1.98	0.45
1:F:692:GLN:NE2	1:F:696:GLN:OE1	2.42	0.45
1:C:777:PRO:HB3	1:C:795:TRP:CE2	2.52	0.44

Continued on next page...

Continued from previous page...

Atom-1	Atom-2	Interatomic distance (Å)	Clash overlap (Å)
1:H:665:VAL:HB	1:H:729:ARG:NH1	2.31	0.44
1:B:819:LEU:HA	1:B:863:GLU:HG2	1.98	0.44
1:D:882:ARG:O	1:D:886:GLN:HG3	2.18	0.44
1:E:680:LYS:HB2	1:E:681:ILE:HD12	1.98	0.44
1:F:895:VAL:HG13	1:F:897:VAL:H	1.82	0.44
1:D:878:SER:O	1:D:878:SER:OG	2.31	0.44
1:A:676:ARG:HD3	1:A:676:ARG:HA	1.80	0.44
1:G:903:ALA:O	1:G:906:LYS:HG2	2.18	0.44
1:E:686:ASP:O	1:E:689:SER:OG	2.30	0.44
1:F:754:LEU:HD13	1:F:902:PHE:CE1	2.53	0.44
1:F:895:VAL:HG13	1:F:897:VAL:N	2.33	0.44
1:C:878:SER:O	1:C:878:SER:OG	2.29	0.43
1:H:661:ILE:CD1	1:H:698:TRP:HB3	2.48	0.43
1:F:888:LEU:C	1:F:888:LEU:HD12	2.38	0.43
1:F:888:LEU:O	1:F:888:LEU:HD13	2.19	0.43
1:C:887:ARG:O	1:C:891:ARG:HG3	2.17	0.43
1:B:639:LEU:HD22	1:B:687:VAL:HG23	2.00	0.43
1:C:670:ILE:O	1:C:674:MET:HG3	2.19	0.43
1:A:851:PHE:CE1	1:A:856:GLU:HG2	2.54	0.42
1:C:703:LEU:HA	1:C:752:PHE:O	2.18	0.42
1:A:878:SER:HA	1:B:860:TRP:CE2	2.55	0.42
1:F:707:GLY:HA3	1:F:756:GLU:O	2.19	0.42
1:G:800:GLY:O	1:G:803:ARG:NH1	2.50	0.42
1:A:876:ASP:OD2	1:B:873:HIS:ND1	2.36	0.42
1:B:714:SER:HA	1:B:760:ALA:O	2.20	0.42
1:E:692:GLN:NE2	1:E:696:GLN:OE1	2.37	0.42
1:E:729:ARG:HH11	1:E:729:ARG:HG3	1.85	0.42
1:B:864:MET:HE1	1:B:886:GLN:HE21	1.83	0.42
1:F:756:GLU:HB2	1:F:794:PHE:CE2	2.54	0.42
1:C:756:GLU:OE1	1:C:893:TRP:NE1	2.42	0.42
1:H:686:ASP:O	1:H:689:SER:OG	2.37	0.42
1:A:851:PHE:HE1	1:A:856:GLU:HG2	1.84	0.42
1:D:887:ARG:O	1:D:891:ARG:HG3	2.20	0.42
1:F:888:LEU:C	1:F:888:LEU:CD1	2.88	0.41
1:C:878:SER:HA	1:D:860:TRP:CE2	2.55	0.41
1:D:857:ASP:OD1	1:D:858:ILE:N	2.53	0.41
1:A:860:TRP:CE2	1:B:878:SER:HA	2.56	0.41
1:C:883:LEU:HD23	1:C:883:LEU:HA	1.87	0.41
1:H:803:ARG:N	1:H:804:PRO:HD3	2.36	0.41
1:A:906:LYS:HE2	1:A:906:LYS:HB2	1.83	0.41
1:G:661:ILE:CD1	1:G:698:TRP:HB3	2.50	0.41

Continued on next page...

Continued from previous page...

Atom-1	Atom-2	Interatomic distance (Å)	Clash overlap (Å)
1:H:879:ASN:ND2	1:H:879:ASN:C	2.73	0.41
1:F:638:SER:HA	1:F:705:ILE:HG13	2.03	0.41
1:C:673:GLY:HA3	1:C:683:TYR:OH	2.21	0.41
1:D:865:GLU:OE1	1:D:873:HIS:N	2.52	0.41
1:C:864:MET:HE2	1:C:864:MET:HB2	1.91	0.41
1:E:681:ILE:N	1:E:681:ILE:CD1	2.82	0.40
1:F:643:ILE:H	1:F:643:ILE:HD12	1.86	0.40
1:F:888:LEU:O	1:F:888:LEU:CD1	2.70	0.40
1:D:724:TYR:CD1	1:G:729:ARG:HA	2.57	0.40
1:H:659:ARG:HH21	1:H:682:MET:CE	2.34	0.40
1:G:759:VAL:HG11	1:G:791:ALA:HB3	2.03	0.40
1:C:850:VAL:HG22	1:C:857:ASP:O	2.21	0.40
1:F:729:ARG:NH1	1:F:733:GLU:OE2	2.51	0.40

There are no symmetry-related clashes.

5.3 Torsion angles [i](#)

5.3.1 Protein backbone [i](#)

In the following table, the Percentiles column shows the percent Ramachandran outliers of the chain as a percentile score with respect to all X-ray entries followed by that with respect to entries of similar resolution.

The Analysed column shows the number of residues for which the backbone conformation was analysed, and the total number of residues.

Mol	Chain	Analysed	Favoured	Allowed	Outliers	Percentiles	
1	A	273/287 (95%)	263 (96%)	10 (4%)	0	100	100
1	B	272/287 (95%)	260 (96%)	12 (4%)	0	100	100
1	C	272/287 (95%)	262 (96%)	10 (4%)	0	100	100
1	D	273/287 (95%)	265 (97%)	8 (3%)	0	100	100
1	E	170/287 (59%)	165 (97%)	5 (3%)	0	100	100
1	F	168/287 (58%)	165 (98%)	3 (2%)	0	100	100
1	G	168/287 (58%)	165 (98%)	3 (2%)	0	100	100
1	H	178/287 (62%)	170 (96%)	8 (4%)	0	100	100
All	All	1774/2296 (77%)	1715 (97%)	59 (3%)	0	100	100

There are no Ramachandran outliers to report.

5.3.2 Protein sidechains [i](#)

In the following table, the Percentiles column shows the percent sidechain outliers of the chain as a percentile score with respect to all X-ray entries followed by that with respect to entries of similar resolution.

The Analysed column shows the number of residues for which the sidechain conformation was analysed, and the total number of residues.

Mol	Chain	Analysed	Rotameric	Outliers	Percentiles	
1	A	232/251 (92%)	231 (100%)	1 (0%)	89	93
1	B	230/251 (92%)	229 (100%)	1 (0%)	89	93
1	C	230/251 (92%)	229 (100%)	1 (0%)	89	93
1	D	233/251 (93%)	231 (99%)	2 (1%)	75	85
1	E	126/251 (50%)	122 (97%)	4 (3%)	34	61
1	F	136/251 (54%)	129 (95%)	7 (5%)	20	48
1	G	140/251 (56%)	139 (99%)	1 (1%)	81	88
1	H	139/251 (55%)	136 (98%)	3 (2%)	47	70
All	All	1466/2008 (73%)	1446 (99%)	20 (1%)	65	78

All (20) residues with a non-rotameric sidechain are listed below:

Mol	Chain	Res	Type
1	A	828	SER
1	B	708	SER
1	C	714	SER
1	E	641	ASP
1	E	659	ARG
1	E	692	GLN
1	E	729	ARG
1	H	659	ARG
1	H	742	ARG
1	H	879	ASN
1	F	659	ARG
1	F	742	ARG
1	F	761	MET
1	F	766	LYS
1	F	887	ARG
1	F	888	LEU

Continued on next page...

Continued from previous page...

Mol	Chain	Res	Type
1	F	895	VAL
1	D	742[A]	ARG
1	D	742[B]	ARG
1	G	742	ARG

Sometimes sidechains can be flipped to improve hydrogen bonding and reduce clashes. All (2) such sidechains are listed below:

Mol	Chain	Res	Type
1	B	886	GLN
1	E	757	ASN

5.3.3 RNA [i](#)

There are no RNA molecules in this entry.

5.4 Non-standard residues in protein, DNA, RNA chains [i](#)

There are no non-standard protein/DNA/RNA residues in this entry.

5.5 Carbohydrates [i](#)

There are no oligosaccharides in this entry.

5.6 Ligand geometry [i](#)

4 ligands are modelled in this entry.

In the following table, the Counts columns list the number of bonds (or angles) for which Mogul statistics could be retrieved, the number of bonds (or angles) that are observed in the model and the number of bonds (or angles) that are defined in the Chemical Component Dictionary. The Link column lists molecule types, if any, to which the group is linked. The Z score for a bond length (or angle) is the number of standard deviations the observed value is removed from the expected value. A bond length (or angle) with $|Z| > 2$ is considered an outlier worth inspection. RMSZ is the root-mean-square of all Z scores of the bond lengths (or angles).

Mol	Type	Chain	Res	Link	Bond lengths			Bond angles		
					Counts	RMSZ	# Z > 2	Counts	RMSZ	# Z > 2
2	SAH	B	1001	-	23,28,28	1.26	3 (13%)	22,40,40	1.79	4 (18%)
2	SAH	A	1001	-	23,28,28	1.26	3 (13%)	22,40,40	1.75	3 (13%)

Mol	Type	Chain	Res	Link	Bond lengths			Bond angles		
					Counts	RMSZ	# Z > 2	Counts	RMSZ	# Z > 2
2	SAH	D	1001	-	23,28,28	1.27	3 (13%)	22,40,40	1.77	3 (13%)
2	SAH	C	1001	-	23,28,28	1.27	3 (13%)	22,40,40	1.79	4 (18%)

In the following table, the Chirals column lists the number of chiral outliers, the number of chiral centers analysed, the number of these observed in the model and the number defined in the Chemical Component Dictionary. Similar counts are reported in the Torsion and Rings columns. '-' means no outliers of that kind were identified.

Mol	Type	Chain	Res	Link	Chirals	Torsions	Rings
2	SAH	B	1001	-	-	2/11/31/31	0/3/3/3
2	SAH	A	1001	-	-	2/11/31/31	0/3/3/3
2	SAH	D	1001	-	-	2/11/31/31	0/3/3/3
2	SAH	C	1001	-	-	2/11/31/31	0/3/3/3

All (12) bond length outliers are listed below:

Mol	Chain	Res	Type	Atoms	Z	Observed(Å)	Ideal(Å)
2	D	1001	SAH	C2-N3	4.22	1.38	1.32
2	C	1001	SAH	C2-N3	4.17	1.38	1.32
2	B	1001	SAH	C2-N3	4.16	1.38	1.32
2	A	1001	SAH	C2-N3	4.16	1.38	1.32
2	A	1001	SAH	C2-N1	2.60	1.38	1.33
2	C	1001	SAH	C2-N1	2.56	1.38	1.33
2	B	1001	SAH	C2-N1	2.53	1.38	1.33
2	D	1001	SAH	C2-N1	2.51	1.38	1.33
2	A	1001	SAH	OXT-C	-2.20	1.23	1.30
2	C	1001	SAH	OXT-C	-2.19	1.23	1.30
2	B	1001	SAH	OXT-C	-2.17	1.23	1.30
2	D	1001	SAH	OXT-C	-2.17	1.23	1.30

All (14) bond angle outliers are listed below:

Mol	Chain	Res	Type	Atoms	Z	Observed(°)	Ideal(°)
2	B	1001	SAH	N3-C2-N1	-6.21	120.24	128.67
2	D	1001	SAH	N3-C2-N1	-6.20	120.25	128.67
2	C	1001	SAH	N3-C2-N1	-6.19	120.26	128.67
2	A	1001	SAH	N3-C2-N1	-6.12	120.36	128.67
2	B	1001	SAH	C5'-SD-CG	-3.33	92.38	102.26
2	C	1001	SAH	C5'-SD-CG	-3.24	92.65	102.26
2	A	1001	SAH	C5'-SD-CG	-3.24	92.66	102.26
2	D	1001	SAH	C5'-SD-CG	-3.23	92.67	102.26

Continued on next page...

Continued from previous page...

Mol	Chain	Res	Type	Atoms	Z	Observed(°)	Ideal(°)
2	C	1001	SAH	OXT-C-O	-2.77	117.81	124.08
2	B	1001	SAH	OXT-C-O	-2.74	117.87	124.08
2	A	1001	SAH	OXT-C-O	-2.67	118.03	124.08
2	D	1001	SAH	OXT-C-O	-2.66	118.04	124.08
2	C	1001	SAH	O4'-C1'-N9	2.21	111.68	108.75
2	B	1001	SAH	O4'-C1'-N9	2.04	111.45	108.75

There are no chirality outliers.

All (8) torsion outliers are listed below:

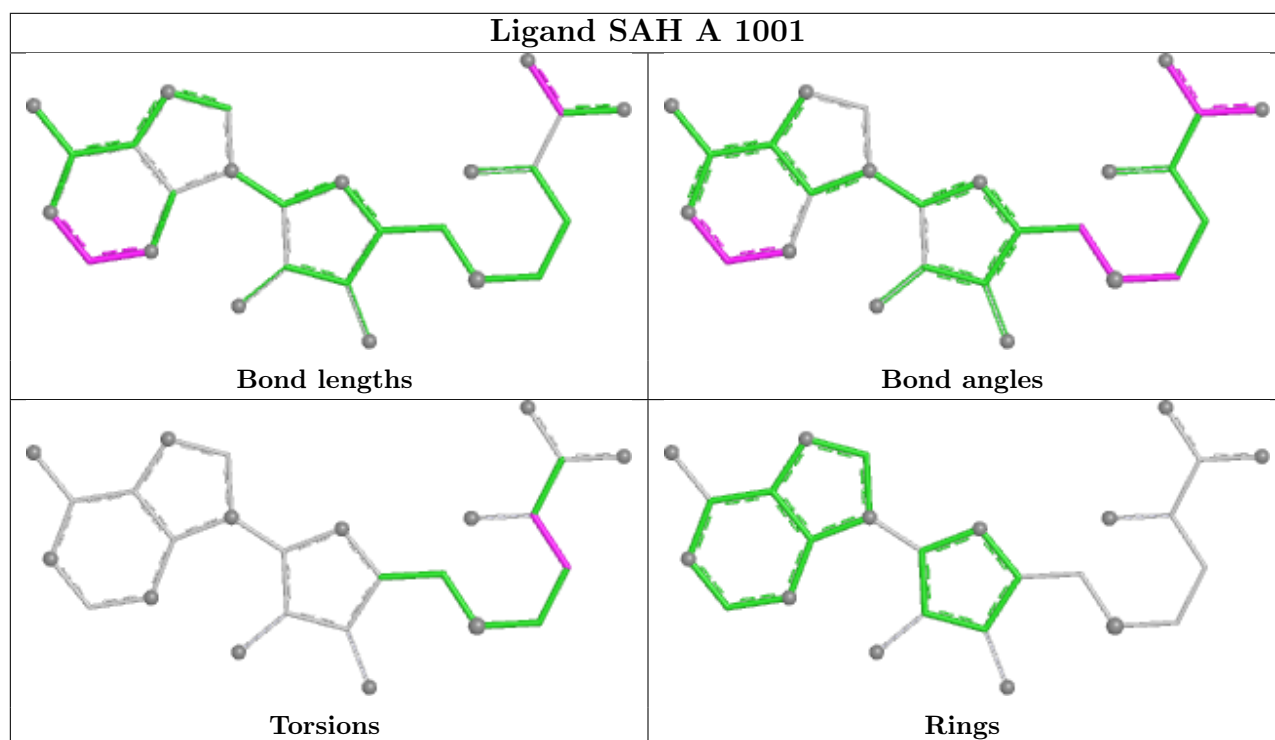
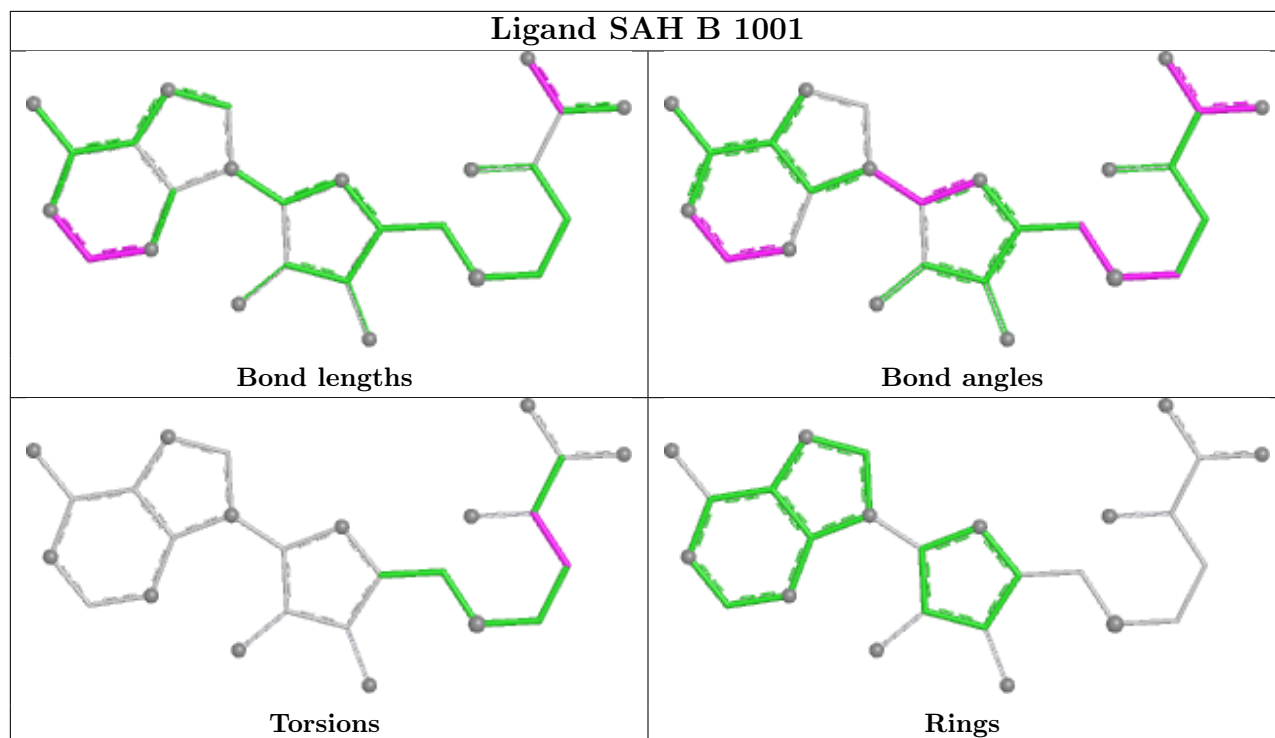
Mol	Chain	Res	Type	Atoms
2	A	1001	SAH	N-CA-CB-CG
2	A	1001	SAH	C-CA-CB-CG
2	B	1001	SAH	N-CA-CB-CG
2	B	1001	SAH	C-CA-CB-CG
2	C	1001	SAH	N-CA-CB-CG
2	C	1001	SAH	C-CA-CB-CG
2	D	1001	SAH	N-CA-CB-CG
2	D	1001	SAH	C-CA-CB-CG

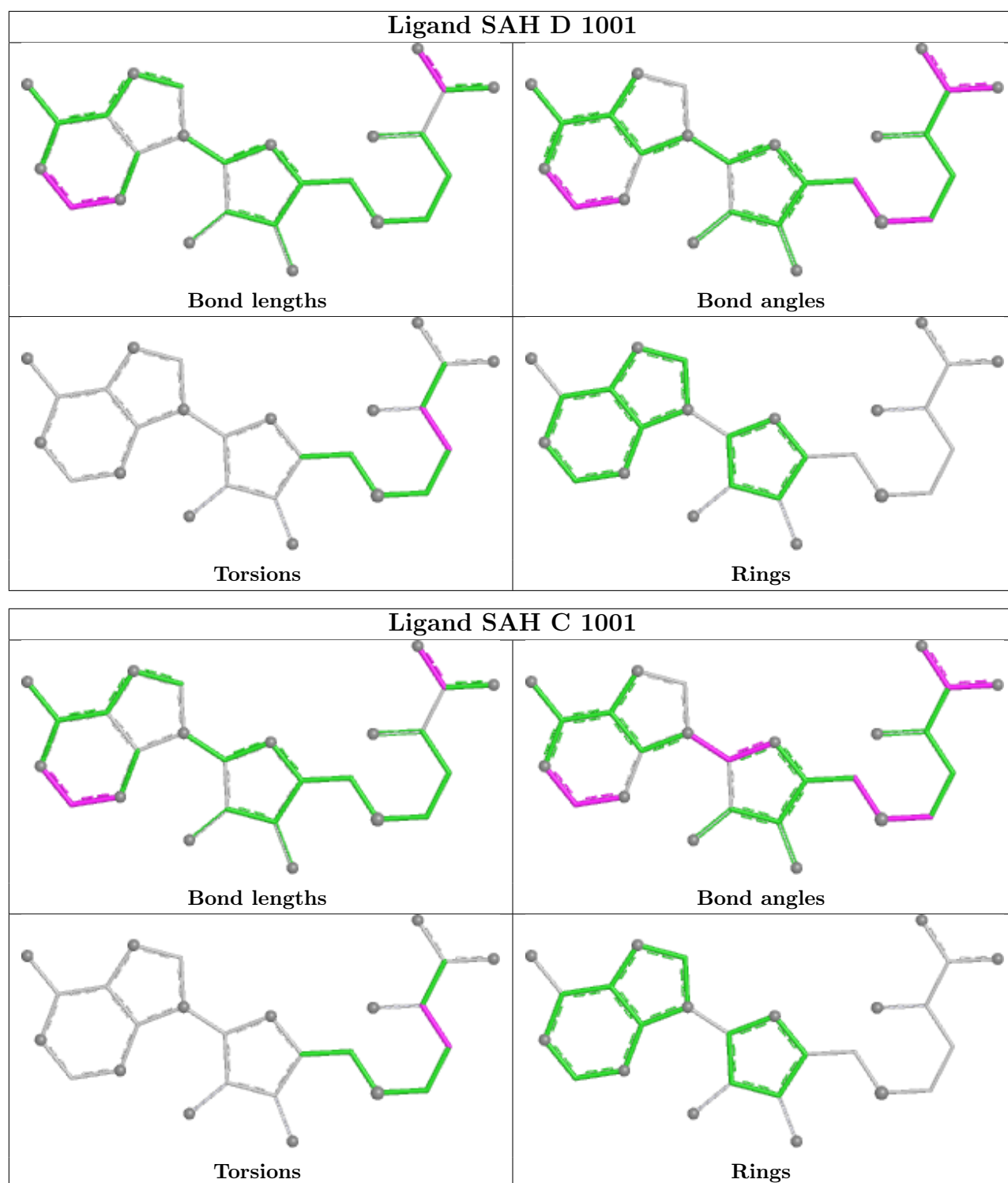
There are no ring outliers.

1 monomer is involved in 1 short contact:

Mol	Chain	Res	Type	Clashes	Symm-Clashes
2	D	1001	SAH	1	0

The following is a two-dimensional graphical depiction of Mogul quality analysis of bond lengths, bond angles, torsion angles, and ring geometry for all instances of the Ligand of Interest. In addition, ligands with molecular weight > 250 and outliers as shown on the validation Tables will also be included. For torsion angles, if less than 5% of the Mogul distribution of torsion angles is within 10 degrees of the torsion angle in question, then that torsion angle is considered an outlier. Any bond that is central to one or more torsion angles identified as an outlier by Mogul will be highlighted in the graph. For rings, the root-mean-square deviation (RMSD) between the ring in question and similar rings identified by Mogul is calculated over all ring torsion angles. If the average RMSD is greater than 60 degrees and the minimal RMSD between the ring in question and any Mogul-identified rings is also greater than 60 degrees, then that ring is considered an outlier. The outliers are highlighted in purple. The color gray indicates Mogul did not find sufficient equivalents in the CSD to analyse the geometry.





5.7 Other polymers [\(i\)](#)

There are no such residues in this entry.

5.8 Polymer linkage issues

There are no chain breaks in this entry.

6 Fit of model and data [i](#)

6.1 Protein, DNA and RNA chains [i](#)

In the following table, the column labelled ‘#RSRZ> 2’ contains the number (and percentage) of RSRZ outliers, followed by percent RSRZ outliers for the chain as percentile scores relative to all X-ray entries and entries of similar resolution. The OWAB column contains the minimum, median, 95th percentile and maximum values of the occupancy-weighted average B-factor per residue. The column labelled ‘Q< 0.9’ lists the number of (and percentage) of residues with an average occupancy less than 0.9.

Mol	Chain	Analysed	<RSRZ>	#RSRZ>2	OWAB(Å ²)	Q<0.9
1	A	273/287 (95%)	-1.62	0 100 100	33, 71, 107, 140	3 (1%)
1	B	274/287 (95%)	-1.63	0 100 100	36, 71, 112, 160	2 (0%)
1	C	274/287 (95%)	-1.65	0 100 100	35, 71, 110, 162	2 (0%)
1	D	275/287 (95%)	-1.62	0 100 100	36, 72, 112, 161	2 (0%)
1	E	180/287 (62%)	-1.47	0 100 100	54, 86, 145, 170	0
1	F	178/287 (62%)	-1.45	0 100 100	54, 89, 142, 177	0
1	G	178/287 (62%)	-1.48	0 100 100	58, 87, 142, 154	1 (0%)
1	H	188/287 (65%)	-1.46	0 100 100	50, 89, 146, 164	0
All	All	1820/2296 (79%)	-1.57	0 100 100	33, 76, 130, 177	10 (0%)

There are no RSRZ outliers to report.

6.2 Non-standard residues in protein, DNA, RNA chains [i](#)

There are no non-standard protein/DNA/RNA residues in this entry.

6.3 Carbohydrates [i](#)

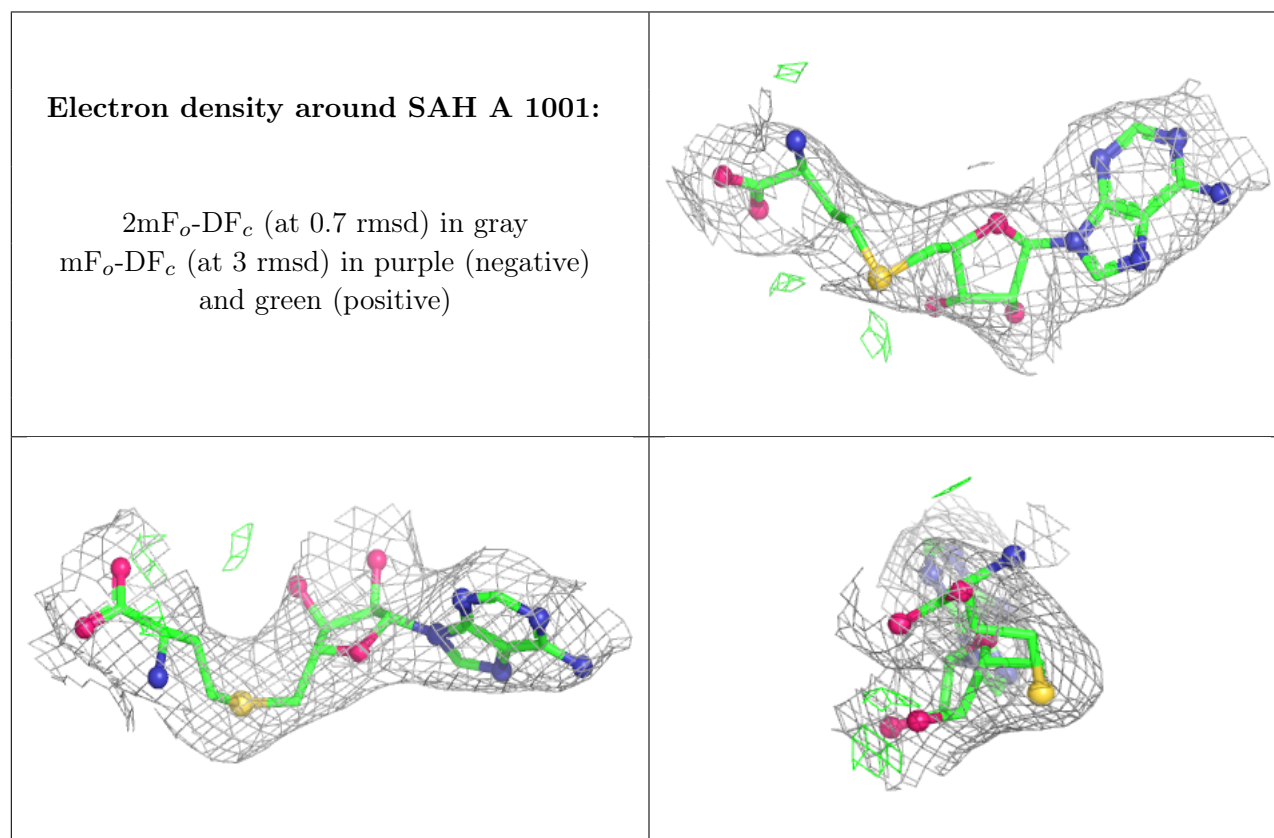
There are no monosaccharides in this entry.

6.4 Ligands [i](#)

In the following table, the Atoms column lists the number of modelled atoms in the group and the number defined in the chemical component dictionary. The B-factors column lists the minimum, median, 95th percentile and maximum values of B factors of atoms in the group. The column labelled ‘Q< 0.9’ lists the number of atoms with occupancy less than 0.9.

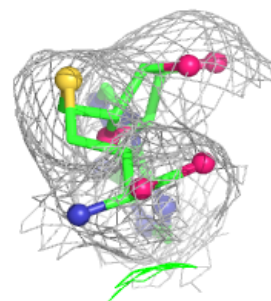
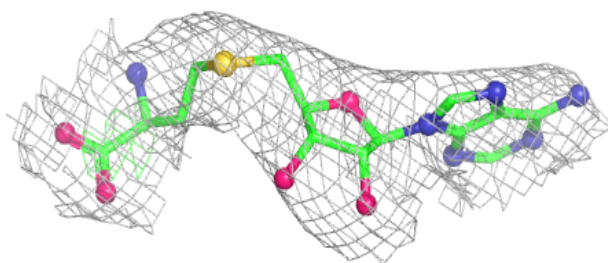
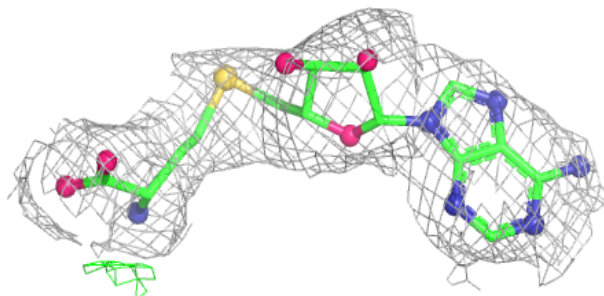
Mol	Type	Chain	Res	Atoms	RSCC	RSR	B-factors(\AA^2)	Q<0.9
2	SAH	A	1001	26/26	0.99	0.04	57,74,88,93	0
2	SAH	C	1001	26/26	0.99	0.03	65,73,87,89	0
2	SAH	B	1001	26/26	1.00	0.03	61,74,88,96	0
2	SAH	D	1001	26/26	1.00	0.03	61,73,86,88	0

The following is a graphical depiction of the model fit to experimental electron density of all instances of the Ligand of Interest. In addition, ligands with molecular weight > 250 and outliers as shown on the geometry validation Tables will also be included. Each fit is shown from different orientation to approximate a three-dimensional view.

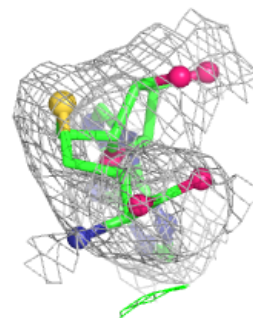
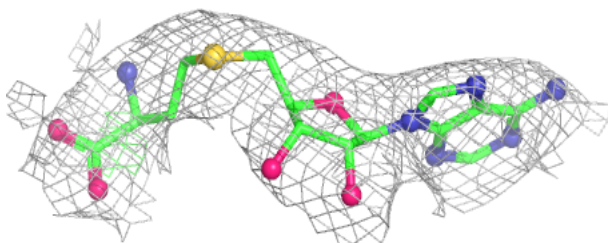
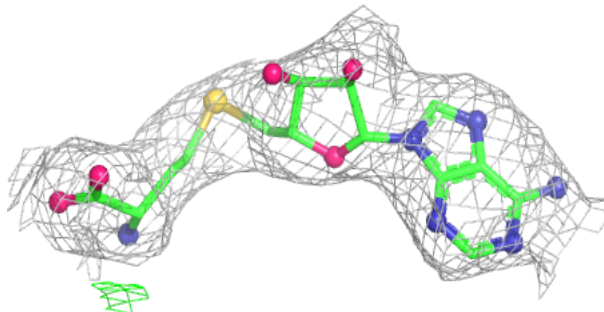


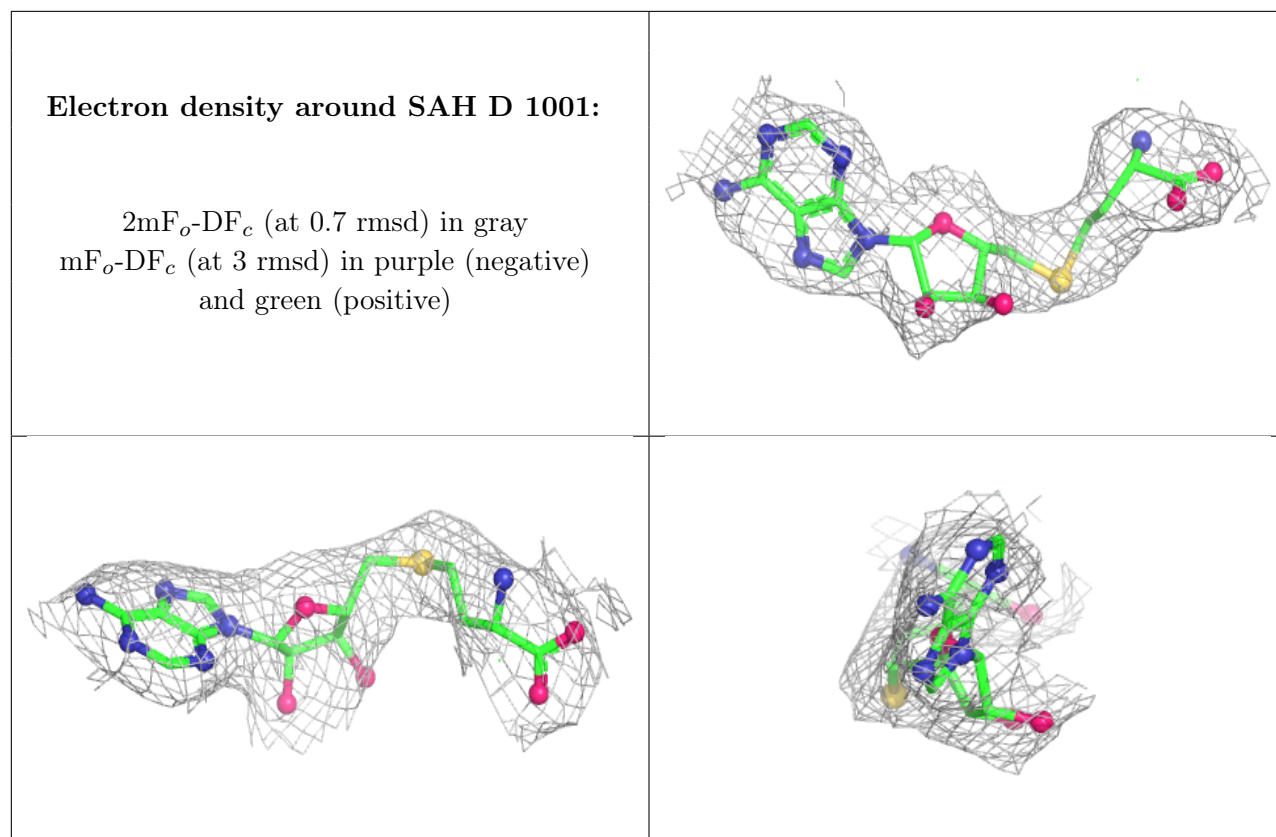
Electron density around SAH C 1001:

$2mF_o-DF_c$ (at 0.7 rmsd) in gray
 mF_o-DF_c (at 3 rmsd) in purple (negative)
and green (positive)

**Electron density around SAH B 1001:**

$2mF_o-DF_c$ (at 0.7 rmsd) in gray
 mF_o-DF_c (at 3 rmsd) in purple (negative)
and green (positive)





6.5 Other polymers [i](#)

There are no such residues in this entry.