



Full wwPDB EM Validation Report ⓘ

Nov 21, 2022 – 05:11 PM EST

PDB ID : 7TEB
EMDB ID : EMD-25844
Title : Cryo-EM structure of GluN1b-2B NMDAR complexed to Fab2 non-active1-like
Authors : Tajima, N.; Furukawa, H.
Deposited on : 2022-01-04
Resolution : 4.23 Å(reported)

This is a Full wwPDB EM Validation Report for a publicly released PDB entry.

We welcome your comments at validation@mail.wwpdb.org

A user guide is available at

<https://www.wwpdb.org/validation/2017/EMValidationReportHelp>

with specific help available everywhere you see the ⓘ symbol.

The types of validation reports are described at

<http://www.wwpdb.org/validation/2017/FAQs#types>.

The following versions of software and data (see [references ⓘ](#)) were used in the production of this report:

EMDB validation analysis : 0.0.1.dev43
MolProbity : 4.02b-467
Percentile statistics : 20191225.v01 (using entries in the PDB archive December 25th 2019)
MapQ : 1.9.9
Ideal geometry (proteins) : Engh & Huber (2001)
Ideal geometry (DNA, RNA) : Parkinson et al. (1996)
Validation Pipeline (wwPDB-VP) : 2.31.3

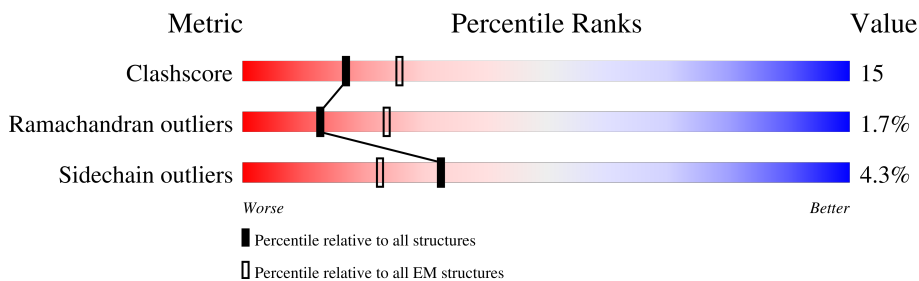
1 Overall quality at a glance

The following experimental techniques were used to determine the structure:

ELECTRON MICROSCOPY

The reported resolution of this entry is 4.23 Å.

Percentile scores (ranging between 0-100) for global validation metrics of the entry are shown in the following graphic. The table shows the number of entries on which the scores are based.



Metric	Whole archive (#Entries)	EM structures (#Entries)
Clashscore	158937	4297
Ramachandran outliers	154571	4023
Sidechain outliers	154315	3826

The table below summarises the geometric issues observed across the polymeric chains and their fit to the map. The red, orange, yellow and green segments of the bar indicate the fraction of residues that contain outliers for ≥ 3 , 2, 1 and 0 types of geometric quality criteria respectively. A grey segment represents the fraction of residues that are not modelled. The numeric value for each fraction is indicated below the corresponding segment, with a dot representing fractions $\leq 5\%$. The upper red bar (where present) indicates the fraction of residues that have poor fit to the EM map (all-atom inclusion $< 40\%$). The numeric value is given above the bar.

Mol	Chain	Length	Quality of chain
1	A	862	
1	C	862	
2	B	883	
2	D	883	
3	H	223	
3	M	223	
4	L	213	
4	N	213	

2 Entry composition i

There are 4 unique types of molecules in this entry. The entry contains 28161 atoms, of which 0 are hydrogens and 0 are deuteriums.

In the tables below, the AltConf column contains the number of residues with at least one atom in alternate conformation and the Trace column contains the number of residues modelled with at most 2 atoms.

- Molecule 1 is a protein called Glutamate receptor ionotropic, NMDA 1.

Mol	Chain	Residues	Atoms					AltConf	Trace
			Total	C	N	O	S		
1	A	783	6177	3928	1070	1142	37	0	0
1	C	784	6186	3933	1071	1145	37	0	0

There are 30 discrepancies between the modelled and reference sequences:

Chain	Residue	Modelled	Actual	Comment	Reference
A	22	SER	CYS	conflict	UNP P35439
A	61	GLN	ASN	conflict	UNP P35439
A	260	ASP	ASN	conflict	UNP P35439
A	371	GLN	ASN	conflict	UNP P35439
A	492	GLN	ASN	conflict	UNP P35439
A	512	GLN	ASN	conflict	UNP P35439
A	615	GLN	GLU	conflict	UNP P35439
A	616	SER	GLU	conflict	UNP P35439
A	618	SER	GLU	conflict	UNP P35439
A	619	THR	GLU	conflict	UNP P35439
A	792	GLN	ASN	conflict	UNP P35439
A	831	CYS	PHE	conflict	UNP P35439
A	860	SER	-	expression tag	UNP P35439
A	861	ARG	-	expression tag	UNP P35439
A	862	ALA	-	expression tag	UNP P35439
C	22	SER	CYS	conflict	UNP P35439
C	61	GLN	ASN	conflict	UNP P35439
C	260	ASP	ASN	conflict	UNP P35439
C	371	GLN	ASN	conflict	UNP P35439
C	492	GLN	ASN	conflict	UNP P35439
C	512	GLN	ASN	conflict	UNP P35439
C	615	GLN	GLU	conflict	UNP P35439
C	616	SER	GLU	conflict	UNP P35439
C	618	SER	GLU	conflict	UNP P35439
C	619	THR	GLU	conflict	UNP P35439
C	792	GLN	ASN	conflict	UNP P35439

Continued on next page...

Continued from previous page...

Chain	Residue	Modelled	Actual	Comment	Reference
C	831	CYS	PHE	conflict	UNP P35439
C	860	SER	-	expression tag	UNP P35439
C	861	ARG	-	expression tag	UNP P35439
C	862	ALA	-	expression tag	UNP P35439

- Molecule 2 is a protein called Glutamate receptor ionotropic, NMDA 2B.

Mol	Chain	Residues	Atoms					AltConf	Trace
2	B	784	Total	C	N	O	S	0	0
			6177	3974	996	1165	42		
2	D	784	Total	C	N	O	S	0	0
			6177	3974	996	1165	42		

There are 126 discrepancies between the modelled and reference sequences:

Chain	Residue	Modelled	Actual	Comment	Reference
B	-30	MET	-	expression tag	UNP Q00960
B	-29	GLY	-	expression tag	UNP Q00960
B	-28	THR	-	expression tag	UNP Q00960
B	-27	MET	-	expression tag	UNP Q00960
B	-26	ARG	-	expression tag	UNP Q00960
B	-25	LEU	-	expression tag	UNP Q00960
B	-24	PHE	-	expression tag	UNP Q00960
B	-23	LEU	-	expression tag	UNP Q00960
B	-22	LEU	-	expression tag	UNP Q00960
B	-21	ALA	-	expression tag	UNP Q00960
B	-20	VAL	-	expression tag	UNP Q00960
B	-19	LEU	-	expression tag	UNP Q00960
B	-18	PHE	-	expression tag	UNP Q00960
B	-17	LEU	-	expression tag	UNP Q00960
B	-16	PHE	-	expression tag	UNP Q00960
B	-15	SER	-	expression tag	UNP Q00960
B	-14	PHE	-	expression tag	UNP Q00960
B	-13	ALA	-	expression tag	UNP Q00960
B	-12	ARG	-	expression tag	UNP Q00960
B	-11	ALA	-	expression tag	UNP Q00960
B	-10	THR	-	expression tag	UNP Q00960
B	-9	GLY	-	expression tag	UNP Q00960
B	-8	TRP	-	expression tag	UNP Q00960
B	-7	SER	-	expression tag	UNP Q00960
B	-6	HIS	-	expression tag	UNP Q00960
B	-5	PRO	-	expression tag	UNP Q00960

Continued on next page...

Continued from previous page...

Chain	Residue	Modelled	Actual	Comment	Reference
B	-4	GLN	-	expression tag	UNP Q00960
B	-3	PHE	-	expression tag	UNP Q00960
B	-2	GLU	-	expression tag	UNP Q00960
B	-1	LYS	-	expression tag	UNP Q00960
B	0	GLY	-	expression tag	UNP Q00960
B	1	GLY	-	expression tag	UNP Q00960
B	2	GLY	-	expression tag	UNP Q00960
B	3	SER	-	expression tag	UNP Q00960
B	4	GLY	-	expression tag	UNP Q00960
B	5	GLY	-	expression tag	UNP Q00960
B	6	GLY	-	expression tag	UNP Q00960
B	7	SER	-	expression tag	UNP Q00960
B	8	GLY	-	expression tag	UNP Q00960
B	9	GLY	-	expression tag	UNP Q00960
B	10	SER	-	expression tag	UNP Q00960
B	11	ALA	-	expression tag	UNP Q00960
B	12	TRP	-	expression tag	UNP Q00960
B	13	SER	-	expression tag	UNP Q00960
B	14	HIS	-	expression tag	UNP Q00960
B	15	PRO	-	expression tag	UNP Q00960
B	16	GLN	-	expression tag	UNP Q00960
B	17	PHE	-	expression tag	UNP Q00960
B	18	GLU	-	expression tag	UNP Q00960
B	19	LYS	-	expression tag	UNP Q00960
B	20	GLY	-	expression tag	UNP Q00960
B	21	ALA	-	expression tag	UNP Q00960
B	22	LEU	-	expression tag	UNP Q00960
B	23	VAL	-	expression tag	UNP Q00960
B	24	PRO	-	expression tag	UNP Q00960
B	25	ARG	-	expression tag	UNP Q00960
B	26	GLY	-	expression tag	UNP Q00960
B	348	ASP	ASN	conflict	UNP Q00960
B	557	CYS	ASP	conflict	UNP Q00960
B	588	SER	CYS	conflict	UNP Q00960
B	600	VAL	PHE	conflict	UNP Q00960
B	838	SER	CYS	conflict	UNP Q00960
B	849	SER	CYS	conflict	UNP Q00960
D	-30	MET	-	expression tag	UNP Q00960
D	-29	GLY	-	expression tag	UNP Q00960
D	-28	THR	-	expression tag	UNP Q00960
D	-27	MET	-	expression tag	UNP Q00960
D	-26	ARG	-	expression tag	UNP Q00960

Continued on next page...

Continued from previous page...

Chain	Residue	Modelled	Actual	Comment	Reference
D	-25	LEU	-	expression tag	UNP Q00960
D	-24	PHE	-	expression tag	UNP Q00960
D	-23	LEU	-	expression tag	UNP Q00960
D	-22	LEU	-	expression tag	UNP Q00960
D	-21	ALA	-	expression tag	UNP Q00960
D	-20	VAL	-	expression tag	UNP Q00960
D	-19	LEU	-	expression tag	UNP Q00960
D	-18	PHE	-	expression tag	UNP Q00960
D	-17	LEU	-	expression tag	UNP Q00960
D	-16	PHE	-	expression tag	UNP Q00960
D	-15	SER	-	expression tag	UNP Q00960
D	-14	PHE	-	expression tag	UNP Q00960
D	-13	ALA	-	expression tag	UNP Q00960
D	-12	ARG	-	expression tag	UNP Q00960
D	-11	ALA	-	expression tag	UNP Q00960
D	-10	THR	-	expression tag	UNP Q00960
D	-9	GLY	-	expression tag	UNP Q00960
D	-8	TRP	-	expression tag	UNP Q00960
D	-7	SER	-	expression tag	UNP Q00960
D	-6	HIS	-	expression tag	UNP Q00960
D	-5	PRO	-	expression tag	UNP Q00960
D	-4	GLN	-	expression tag	UNP Q00960
D	-3	PHE	-	expression tag	UNP Q00960
D	-2	GLU	-	expression tag	UNP Q00960
D	-1	LYS	-	expression tag	UNP Q00960
D	0	GLY	-	expression tag	UNP Q00960
D	1	GLY	-	expression tag	UNP Q00960
D	2	GLY	-	expression tag	UNP Q00960
D	3	SER	-	expression tag	UNP Q00960
D	4	GLY	-	expression tag	UNP Q00960
D	5	GLY	-	expression tag	UNP Q00960
D	6	GLY	-	expression tag	UNP Q00960
D	7	SER	-	expression tag	UNP Q00960
D	8	GLY	-	expression tag	UNP Q00960
D	9	GLY	-	expression tag	UNP Q00960
D	10	SER	-	expression tag	UNP Q00960
D	11	ALA	-	expression tag	UNP Q00960
D	12	TRP	-	expression tag	UNP Q00960
D	13	SER	-	expression tag	UNP Q00960
D	14	HIS	-	expression tag	UNP Q00960
D	15	PRO	-	expression tag	UNP Q00960
D	16	GLN	-	expression tag	UNP Q00960

Continued on next page...

Continued from previous page...

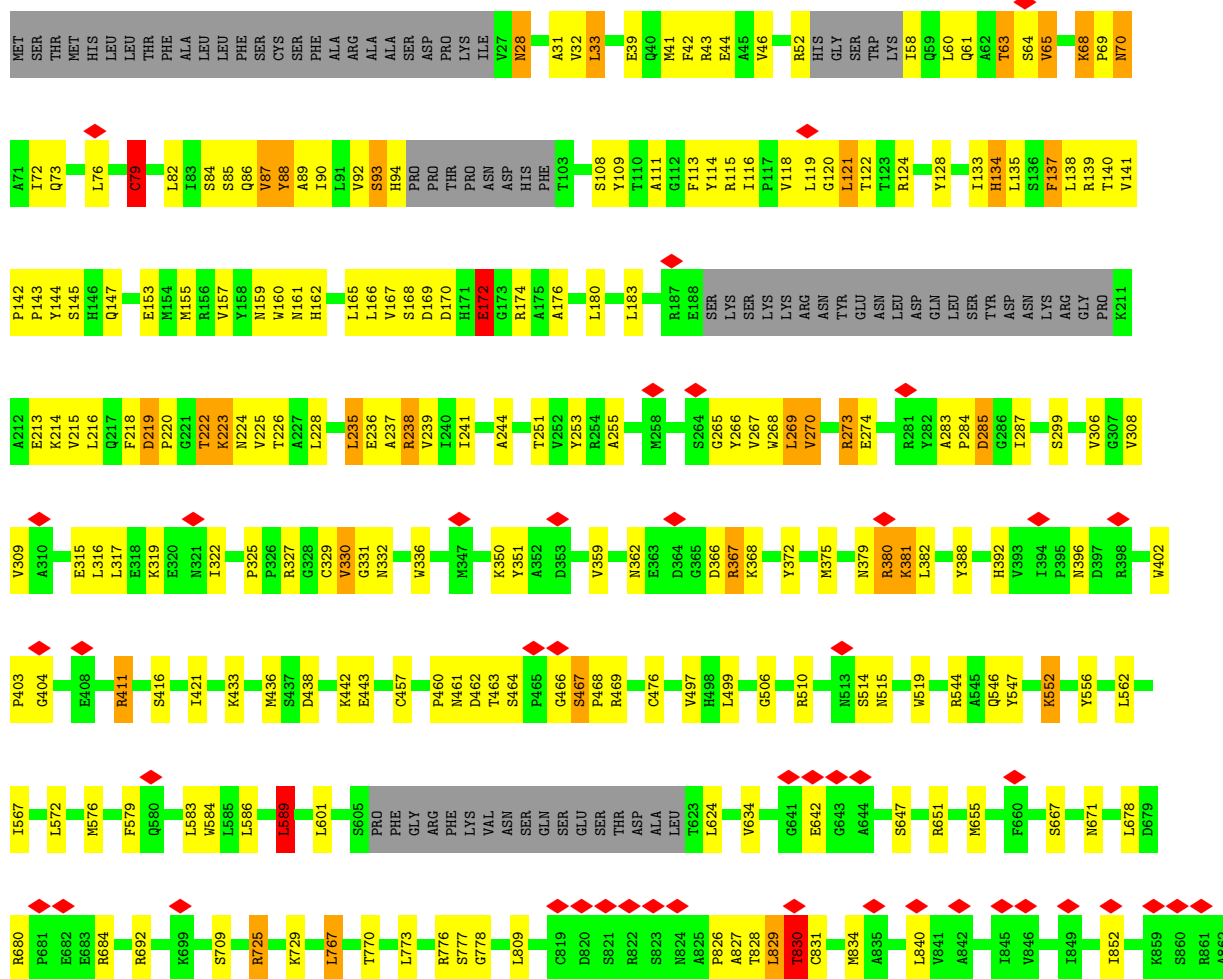
Chain	Residue	Modelled	Actual	Comment	Reference
D	17	PHE	-	expression tag	UNP Q00960
D	18	GLU	-	expression tag	UNP Q00960
D	19	LYS	-	expression tag	UNP Q00960
D	20	GLY	-	expression tag	UNP Q00960
D	21	ALA	-	expression tag	UNP Q00960
D	22	LEU	-	expression tag	UNP Q00960
D	23	VAL	-	expression tag	UNP Q00960
D	24	PRO	-	expression tag	UNP Q00960
D	25	ARG	-	expression tag	UNP Q00960
D	26	GLY	-	expression tag	UNP Q00960
D	348	ASP	ASN	conflict	UNP Q00960
D	557	CYS	ASP	conflict	UNP Q00960
D	588	SER	CYS	conflict	UNP Q00960
D	600	VAL	PHE	conflict	UNP Q00960
D	838	SER	CYS	conflict	UNP Q00960
D	849	SER	CYS	conflict	UNP Q00960

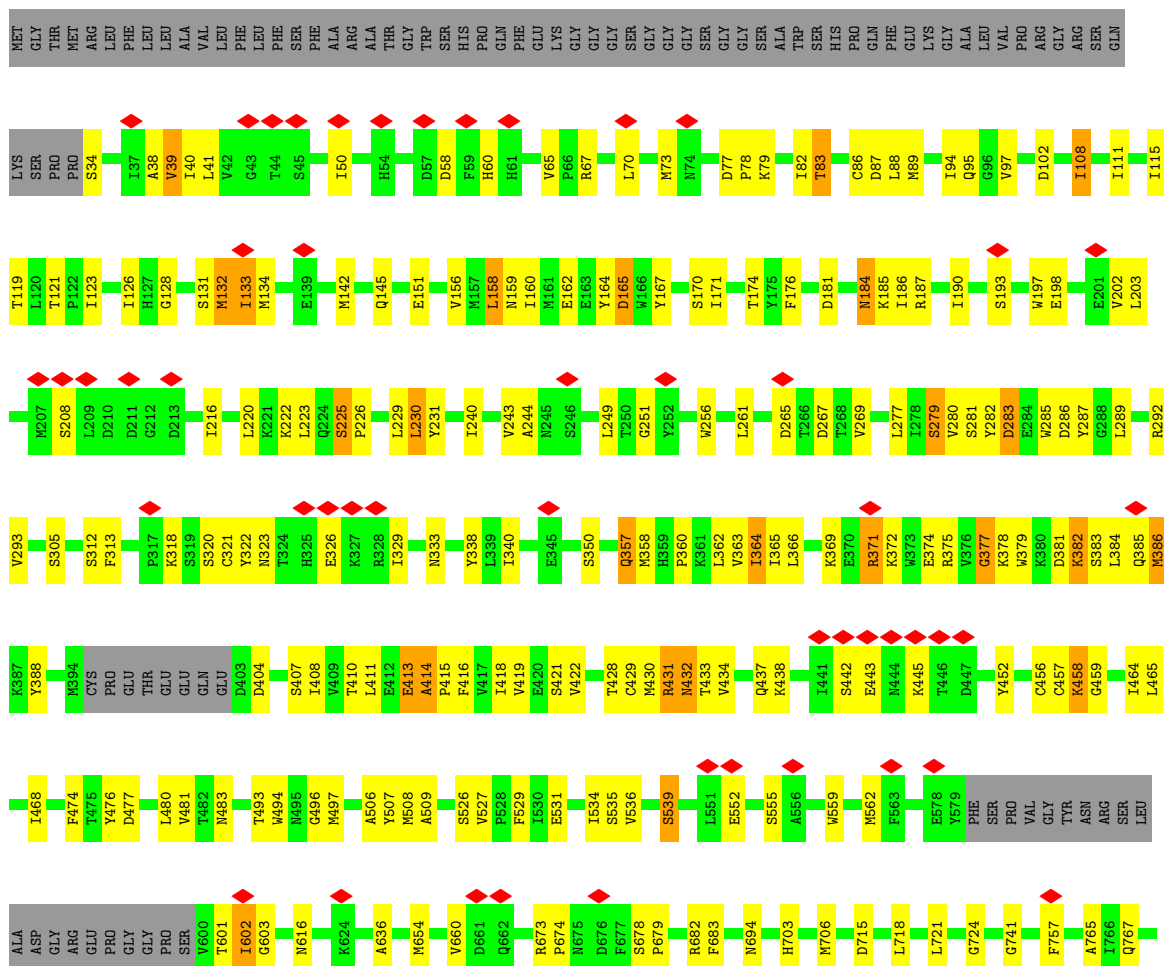
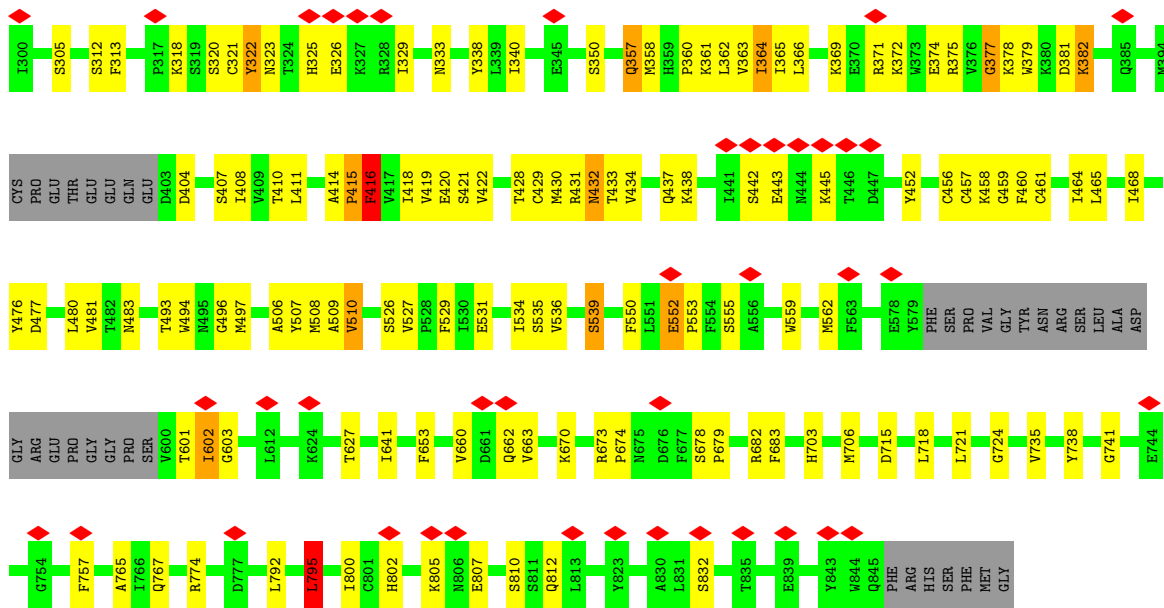
- Molecule 3 is a protein called Fab2 heavy chain.

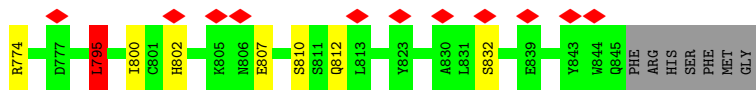
Mol	Chain	Residues	Atoms					AltConf	Trace
			Total	C	N	O	S		
3	H	117	Total 905	C 572	N 153	O 175	S 5	0	0
3	M	116	Total 899	C 569	N 152	O 173	S 5	0	0

- Molecule 4 is a protein called Fab2 light chain.

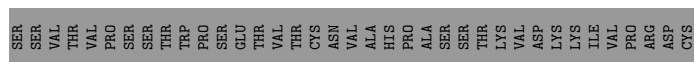
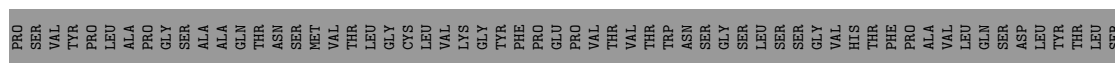
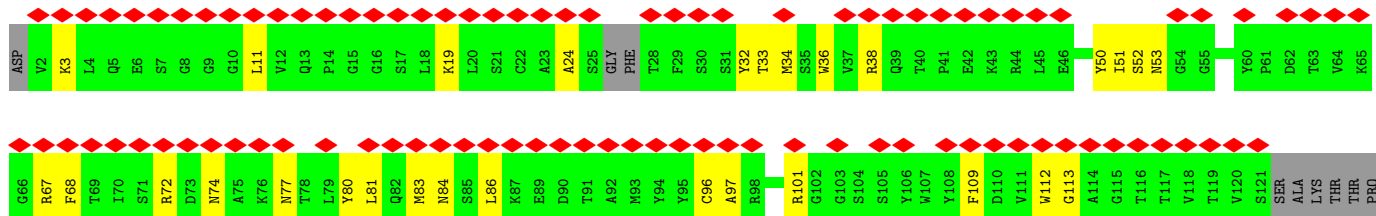
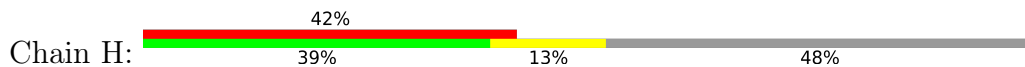
Mol	Chain	Residues	Atoms					AltConf	Trace
			Total	C	N	O	S		
4	L	106	Total 820	C 520	N 136	O 161	S 3	0	0
4	N	106	Total 820	C 520	N 136	O 161	S 3	0	0



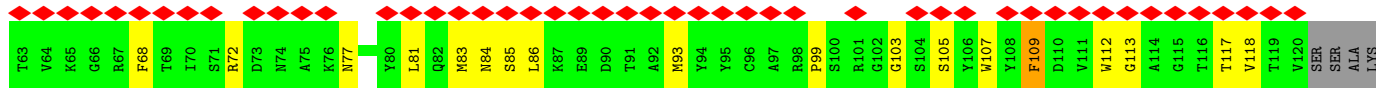
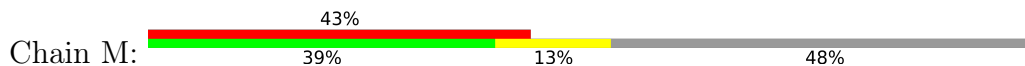




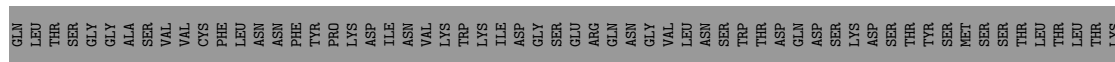
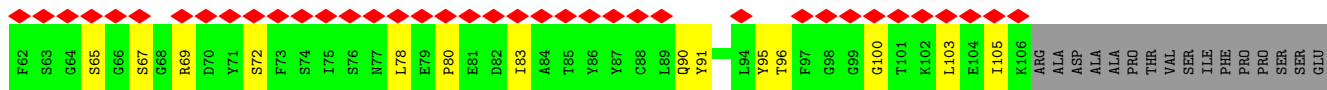
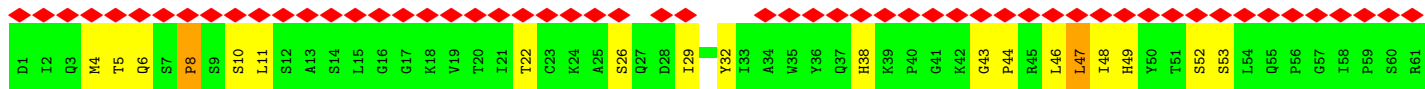
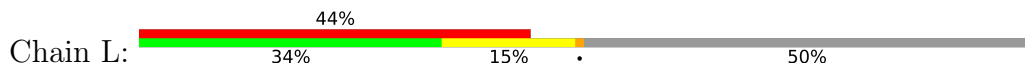
• Molecule 3: Fab2 heavy chain



• Molecule 3: Fab2 heavy chain

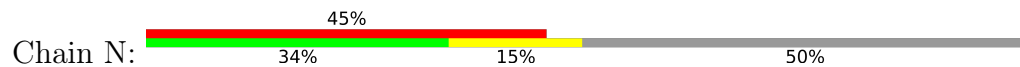


• Molecule 4: Fab2 light chain



ASP
GLU
TYR
GLU
ARG
HIS
ASN
SER
TYR
THR
CYS
GLU
ALA
THR
HIS
LYS
THR
SER
THR
SER
PRO
VAL
ILE
VAL
LYS
SER
PHE
ASN
ARG
ASN
GLU
SER

● Molecule 4: Fab2 light chain



D1 I2 Q3 M4 T5 Q6 S7 P8 S9 S10 L11 S12 A13 S14 L15 G16 G17 K18 V19 T20 T21 T22 C23 K24 A25 S26 Q27 D28 I29 A34 W35 Y36 Q37 H38 K39 P40 G41 K42 G43 P44 R45 L46 L47 I48 H49 Y50 T51 S52 S53 L54 Q55 P56 G57 I58 P59 S60 R61 F62 S63

G64 S65 G66 S67 G68 R69 D70 Y71 S72 S74 I75 S76 N77 L78 E79 P80 E81 D82 I83 A84 T85 Y86 Y87 C88 L89 Q90 Y91 D92 Y95 T96 F97 G98 G99 G100 T101 K102 L103 E104 I105 K106 ARG ALA ASP ALA ALA PRO THR VAL SER ILE PHE PRO SER SER THR LEU THR LEU THR LEU THR LYS ASP GLU

THR SER GLY ALA SER VAL VAL CYS PHE LEU ASN ASN PHE TYR PRO LYS ASP ILE VAL VAL LYS TRP LYS ILE ASP GLY SER GLU ARG GLN ASN GLY VAL LEU ASN TRP THR ASP GLN ASP SER SER LYS MET SER THR LEU THR LEU THR THR LYS ASP GLU

TYR
GLU
ARG
HIS
ASN
SER
TYR
THR
GLU
ALA
THR
HIS
LYS
THR
SER
PRO
ILE
VAL
SER
PHE
ASN
ARG
ASN
GLU
SER

4 Experimental information

Property	Value	Source
EM reconstruction method	SINGLE PARTICLE	Depositor
Imposed symmetry	POINT, Not provided	
Number of particles used	30424	Depositor
Resolution determination method	FSC 0.143 CUT-OFF	Depositor
CTF correction method	PHASE FLIPPING ONLY	Depositor
Microscope	FEI TITAN KRIOS	Depositor
Voltage (kV)	300	Depositor
Electron dose ($e^-/\text{\AA}^2$)	65	Depositor
Minimum defocus (nm)	1000	Depositor
Maximum defocus (nm)	3500	Depositor
Magnification	Not provided	
Image detector	GATAN K3 BIOQUANTUM (6k x 4k)	Depositor
Maximum map value	9.079	Depositor
Minimum map value	-2.019	Depositor
Average map value	0.054	Depositor
Map value standard deviation	0.469	Depositor
Recommended contour level	3.0	Depositor
Map size (\AA)	350.72, 350.72, 350.72	wwPDB
Map dimensions	256, 256, 256	wwPDB
Map angles ($^\circ$)	90.0, 90.0, 90.0	wwPDB
Pixel spacing (\AA)	1.37, 1.37, 1.37	Depositor

5 Model quality

5.1 Standard geometry

The Z score for a bond length (or angle) is the number of standard deviations the observed value is removed from the expected value. A bond length (or angle) with $|Z| > 5$ is considered an outlier worth inspection. RMSZ is the root-mean-square of all Z scores of the bond lengths (or angles).

Mol	Chain	Bond lengths		Bond angles	
		RMSZ	# Z >5	RMSZ	# Z >5
1	A	0.33	0/6306	0.70	10/8534 (0.1%)
1	C	0.33	0/6315	0.69	10/8546 (0.1%)
2	B	0.34	0/6312	0.77	13/8550 (0.2%)
2	D	0.34	0/6312	0.76	12/8550 (0.1%)
3	H	0.34	0/927	0.66	1/1255 (0.1%)
3	M	0.33	0/921	0.64	0/1247
4	L	0.37	0/840	0.72	1/1136 (0.1%)
4	N	0.37	0/840	0.72	1/1136 (0.1%)
All	All	0.34	0/28773	0.73	48/38954 (0.1%)

Chiral center outliers are detected by calculating the chiral volume of a chiral center and verifying if the center is modelled as a planar moiety or with the opposite hand. A planarity outlier is detected by checking planarity of atoms in a peptide group, atoms in a mainchain group or atoms of a sidechain that are expected to be planar.

Mol	Chain	#Chirality outliers	#Planarity outliers
1	A	0	6
1	C	0	6
2	B	0	18
2	D	0	19
3	H	0	2
3	M	0	1
4	L	0	3
4	N	0	2
All	All	0	57

There are no bond length outliers.

All (48) bond angle outliers are listed below:

Mol	Chain	Res	Type	Atoms	Z	Observed(°)	Ideal(°)
1	C	476	CYS	CA-CB-SG	12.35	136.22	114.00
1	A	476	CYS	CA-CB-SG	12.34	136.22	114.00

Continued on next page...

Continued from previous page...

Mol	Chain	Res	Type	Atoms	Z	Observed(°)	Ideal(°)
2	D	58	ASP	CB-CG-OD1	7.42	124.97	118.30
2	B	58	ASP	CB-CG-OD1	7.37	124.93	118.30
1	C	624	LEU	CA-CB-CG	7.06	131.55	115.30
1	A	624	LEU	CA-CB-CG	7.05	131.52	115.30
1	A	79	CYS	CA-CB-SG	6.30	125.35	114.00
2	B	108	ILE	CG1-CB-CG2	-6.29	97.56	111.40
1	C	79	CYS	CA-CB-SG	6.29	125.32	114.00
2	D	108	ILE	CG1-CB-CG2	-6.28	97.59	111.40
2	B	377	GLY	N-CA-C	6.05	128.21	113.10
2	D	377	GLY	N-CA-C	6.04	128.21	113.10
1	A	476	CYS	N-CA-CB	-5.99	99.81	110.60
1	C	476	CYS	N-CA-CB	-5.96	99.86	110.60
2	B	158	LEU	CA-CB-CG	5.95	128.99	115.30
2	D	158	LEU	CA-CB-CG	5.95	128.98	115.30
1	A	589	LEU	CA-CB-CG	5.92	128.91	115.30
1	C	589	LEU	CA-CB-CG	5.90	128.88	115.30
1	A	265	GLY	N-CA-C	-5.88	98.40	113.10
1	C	265	GLY	N-CA-C	-5.87	98.42	113.10
2	B	562	MET	CA-CB-CG	5.75	123.07	113.30
2	D	562	MET	CA-CB-CG	5.71	123.00	113.30
1	A	336	TRP	CA-CB-CG	-5.55	103.15	113.70
1	C	336	TRP	CA-CB-CG	-5.55	103.15	113.70
2	D	231	TYR	CB-CG-CD2	5.52	124.31	121.00
2	D	203	LEU	CA-CB-CG	5.46	127.87	115.30
2	B	203	LEU	CA-CB-CG	5.46	127.86	115.30
2	B	231	TYR	CB-CG-CD2	5.46	124.27	121.00
2	D	795	LEU	CA-CB-CG	5.42	127.77	115.30
2	D	60	HIS	C-N-CA	5.41	135.21	121.70
2	B	60	HIS	C-N-CA	5.40	135.21	121.70
2	B	795	LEU	CA-CB-CG	5.40	127.72	115.30
1	A	270	VAL	CA-CB-CG1	5.38	118.97	110.90
2	B	338	TYR	CA-CB-CG	-5.37	103.20	113.40
1	C	270	VAL	CA-CB-CG1	5.35	118.93	110.90
1	C	367	ARG	C-N-CA	5.35	135.08	121.70
2	D	338	TYR	CA-CB-CG	-5.35	103.23	113.40
1	A	367	ARG	C-N-CA	5.35	135.07	121.70
4	L	78	LEU	CA-CB-CG	5.31	127.52	115.30
4	N	78	LEU	CA-CB-CG	5.29	127.47	115.30
3	H	101	ARG	C-N-CA	5.19	133.19	122.30
2	D	363	VAL	CA-CB-CG1	5.18	118.67	110.90
2	B	363	VAL	CA-CB-CG1	5.16	118.63	110.90
1	C	316	LEU	CA-CB-CG	5.09	127.00	115.30

Continued on next page...

Continued from previous page...

Mol	Chain	Res	Type	Atoms	Z	Observed(°)	Ideal(°)
1	A	316	LEU	CA-CB-CG	5.08	126.97	115.30
2	D	176	PHE	CB-CG-CD2	-5.06	117.26	120.80
2	B	176	PHE	CB-CG-CD2	-5.05	117.27	120.80
2	B	55	GLU	O-C-N	-5.03	114.66	122.70

There are no chirality outliers.

All (57) planarity outliers are listed below:

Mol	Chain	Res	Type	Group
1	A	403	PRO	Peptide
1	A	552	LYS	Peptide
1	A	567	ILE	Peptide
1	A	79	CYS	Peptide
1	A	829	LEU	Peptide
1	A	830	THR	Peptide
2	B	128	GLY	Peptide
2	B	132	MET	Peptide
2	B	142	MET	Peptide
2	B	165	ASP	Peptide
2	B	184	ASN	Mainchain
2	B	222	LYS	Peptide
2	B	225	SER	Peptide
2	B	251	GLY	Peptide
2	B	283	ASP	Peptide
2	B	340	ILE	Peptide
2	B	357	GLN	Peptide
2	B	371	ARG	Peptide
2	B	476	TYR	Peptide
2	B	506	ALA	Peptide
2	B	552	GLU	Peptide
2	B	678	SER	Peptide
2	B	795	LEU	Peptide
2	B	83	THR	Mainchain
1	C	403	PRO	Peptide
1	C	552	LYS	Peptide
1	C	567	ILE	Peptide
1	C	79	CYS	Peptide
1	C	829	LEU	Peptide
1	C	830	THR	Peptide
2	D	128	GLY	Peptide
2	D	132	MET	Peptide
2	D	142	MET	Peptide

Continued on next page...

Continued from previous page...

Mol	Chain	Res	Type	Group
2	D	165	ASP	Peptide
2	D	184	ASN	Mainchain
2	D	222	LYS	Peptide
2	D	225	SER	Peptide
2	D	251	GLY	Peptide
2	D	283	ASP	Peptide
2	D	340	ILE	Peptide
2	D	357	GLN	Peptide
2	D	371	ARG	Peptide
2	D	476	TYR	Peptide
2	D	506	ALA	Peptide
2	D	552	GLU	Peptide
2	D	660	VAL	Peptide
2	D	678	SER	Peptide
2	D	795	LEU	Peptide
2	D	83	THR	Mainchain
3	H	109	PHE	Peptide
3	H	36	TRP	Peptide
4	L	47	LEU	Peptide
4	L	8	PRO	Peptide
4	L	80	PRO	Peptide
3	M	109	PHE	Peptide
4	N	8	PRO	Peptide
4	N	80	PRO	Peptide

5.2 Too-close contacts [i](#)

In the following table, the Non-H and H(model) columns list the number of non-hydrogen atoms and hydrogen atoms in the chain respectively. The H(added) column lists the number of hydrogen atoms added and optimized by MolProbity. The Clashes column lists the number of clashes within the asymmetric unit, whereas Symm-Clashes lists symmetry-related clashes.

Mol	Chain	Non-H	H(model)	H(added)	Clashes	Symm-Clashes
1	A	6177	0	6171	247	0
1	C	6186	0	6172	257	0
2	B	6177	0	6095	166	0
2	D	6177	0	6095	170	0
3	H	905	0	867	19	0
3	M	899	0	862	20	0
4	L	820	0	802	14	0
4	N	820	0	802	13	0
All	All	28161	0	27866	861	0

The all-atom clashscore is defined as the number of clashes found per 1000 atoms (including hydrogen atoms). The all-atom clashscore for this structure is 15.

All (861) close contacts within the same asymmetric unit are listed below, sorted by their clash magnitude.

Atom-1	Atom-2	Interatomic distance (Å)	Clash overlap (Å)
1:A:31:ALA:HB3	1:A:65:VAL:CG2	1.29	1.60
2:B:364:ILE:HG13	2:B:377:GLY:CA	1.29	1.58
2:D:364:ILE:HG13	2:D:377:GLY:CA	1.29	1.56
1:A:576:MET:HE3	1:A:840:LEU:CD1	1.39	1.53
1:C:167:VAL:N	1:C:218:PHE:CE1	1.80	1.49
1:A:118:VAL:CG2	1:A:136:SER:O	1.65	1.42
1:C:576:MET:CE	1:C:840:LEU:CD1	1.97	1.41
1:A:31:ALA:CB	1:A:65:VAL:CG2	1.99	1.41
1:A:576:MET:CE	1:A:840:LEU:CD1	1.97	1.41
1:A:128:TYR:O	1:A:137:PHE:HZ	1.09	1.34
1:C:576:MET:HE3	1:C:840:LEU:CD1	1.53	1.32
1:C:167:VAL:CA	1:C:218:PHE:CZ	2.15	1.30
1:A:128:TYR:O	1:A:137:PHE:CZ	1.84	1.28
2:D:364:ILE:CG1	2:D:377:GLY:HA3	1.64	1.27
2:B:364:ILE:CG1	2:B:377:GLY:HA3	1.63	1.26
1:A:214:LYS:HE2	1:A:235:LEU:CD1	1.63	1.26
1:A:86:GLN:O	1:A:325:PRO:HD2	1.33	1.24
1:C:467:SER:H	1:C:468:PRO:CD	1.50	1.24
1:A:467:SER:H	1:A:468:PRO:CD	1.52	1.21
1:A:33:LEU:HD12	1:A:39:GLU:OE2	1.36	1.19
1:C:86:GLN:O	1:C:325:PRO:HD2	1.36	1.19
2:D:364:ILE:CG1	2:D:377:GLY:CA	2.18	1.19
1:C:88:TYR:OH	1:C:90:ILE:HG22	1.43	1.19
1:C:167:VAL:N	1:C:218:PHE:CZ	2.10	1.19
1:A:214:LYS:CE	1:A:235:LEU:HD11	1.74	1.18
2:D:320:SER:OG	2:D:322:TYR:CD2	1.91	1.18
1:A:576:MET:CE	1:A:840:LEU:HD11	1.66	1.17
2:B:364:ILE:CG1	2:B:377:GLY:CA	2.18	1.17
1:A:115:ARG:CD	1:A:135:LEU:HD11	1.75	1.17
1:A:219:ASP:HB3	1:A:220:PRO:HD3	1.22	1.16
1:C:214:LYS:HE2	1:C:235:LEU:CD1	1.75	1.16
1:A:576:MET:CE	1:A:840:LEU:HD12	1.73	1.15
1:A:88:TYR:OH	1:A:90:ILE:HG22	1.43	1.15
1:C:576:MET:CE	1:C:840:LEU:HD11	1.66	1.15
2:D:414:ALA:CB	2:D:415:PRO:CD	2.25	1.14
1:C:159:ASN:HB3	1:C:411:ARG:HD2	1.30	1.14
1:C:467:SER:H	1:C:468:PRO:HD2	1.09	1.14

Continued on next page...

Continued from previous page...

Atom-1	Atom-2	Interatomic distance (Å)	Clash overlap (Å)
1:A:159:ASN:HB3	1:A:411:ARG:HD2	1.18	1.14
2:B:364:ILE:CG1	2:B:377:GLY:C	2.17	1.13
1:A:118:VAL:HG23	1:A:136:SER:O	0.97	1.13
1:C:93:SER:OG	1:C:122:THR:OG1	1.63	1.13
2:D:364:ILE:CG1	2:D:377:GLY:C	2.17	1.13
1:C:213:GLU:OE2	1:C:235:LEU:CD2	1.97	1.12
1:C:167:VAL:C	1:C:218:PHE:CZ	2.22	1.12
2:D:320:SER:OG	2:D:322:TYR:CE2	1.93	1.12
2:D:414:ALA:HB3	2:D:415:PRO:HD2	1.22	1.11
1:A:214:LYS:NZ	1:A:235:LEU:HD11	1.64	1.11
1:A:31:ALA:HB3	1:A:65:VAL:HG22	1.23	1.11
1:A:213:GLU:OE2	1:A:235:LEU:CD2	1.98	1.11
1:A:214:LYS:HE2	1:A:235:LEU:HD13	1.32	1.10
1:C:214:LYS:NZ	1:C:235:LEU:HD11	1.64	1.10
1:C:219:ASP:HB3	1:C:220:PRO:CD	1.81	1.10
1:C:576:MET:CE	1:C:840:LEU:HD12	1.73	1.10
1:A:467:SER:H	1:A:468:PRO:HD2	1.04	1.09
1:A:88:TYR:OH	1:A:90:ILE:CG2	1.99	1.09
1:C:172:GLU:OE1	1:C:273:ARG:NH2	1.84	1.09
1:A:172:GLU:OE1	1:A:273:ARG:NH2	1.84	1.08
1:C:167:VAL:N	1:C:218:PHE:HE1	1.27	1.08
1:A:31:ALA:CB	1:A:65:VAL:HG22	1.72	1.08
1:A:31:ALA:HB3	1:A:65:VAL:HG23	1.11	1.07
1:A:159:ASN:HB3	1:A:411:ARG:CD	1.84	1.06
2:D:414:ALA:HB3	2:D:415:PRO:CD	1.85	1.06
1:A:28:ASN:HA	1:A:61:GLN:O	1.55	1.04
1:C:128:TYR:O	1:C:137:PHE:CZ	2.11	1.04
1:A:93:SER:OG	1:A:122:THR:OG1	1.62	1.04
1:A:115:ARG:HD2	1:A:135:LEU:HD11	1.34	1.04
1:C:330:VAL:HG13	2:D:79:LYS:HE3	1.40	1.04
1:C:88:TYR:OH	1:C:90:ILE:CG2	2.06	1.03
1:A:115:ARG:CD	1:A:135:LEU:CD1	2.36	1.03
1:C:219:ASP:HB3	1:C:220:PRO:HD3	1.07	1.03
1:C:214:LYS:HE2	1:C:235:LEU:HD13	1.33	1.03
1:C:214:LYS:CE	1:C:235:LEU:HD11	1.88	1.03
1:A:510:ARG:NH1	1:A:514:SER:O	1.92	1.02
2:D:432:ASN:ND2	2:D:456:CYS:HB3	1.74	1.02
1:A:93:SER:CB	1:A:122:THR:OG1	2.07	1.02
2:D:414:ALA:HB1	2:D:415:PRO:HD3	1.41	1.02
1:C:93:SER:CB	1:C:122:THR:OG1	2.08	1.02
1:C:167:VAL:C	1:C:218:PHE:CE1	2.33	1.01

Continued on next page...

Continued from previous page...

Atom-1	Atom-2	Interatomic distance (Å)	Clash overlap (Å)
1:C:285:ASP:HB3	1:C:379:ASN:HB2	1.42	1.01
1:C:115:ARG:CD	1:C:135:LEU:HD11	1.91	1.00
2:D:364:ILE:HG12	2:D:377:GLY:C	1.81	1.00
1:C:576:MET:HE1	1:C:840:LEU:CD1	1.83	1.00
1:C:576:MET:HE1	1:C:840:LEU:HD12	1.34	1.00
1:C:330:VAL:CG1	2:D:79:LYS:HE3	1.90	0.99
1:A:88:TYR:HE1	1:A:90:ILE:HB	1.27	0.99
1:A:410:PRO:O	1:A:411:ARG:O	1.79	0.99
1:C:115:ARG:HD2	1:C:135:LEU:HD11	1.45	0.98
2:B:364:ILE:HG12	2:B:377:GLY:C	1.80	0.98
2:B:662:GLN:HG2	2:B:663:VAL:HG23	1.46	0.97
2:D:432:ASN:HD22	2:D:456:CYS:HB3	1.29	0.97
1:A:467:SER:N	1:A:468:PRO:HD2	1.79	0.97
1:A:214:LYS:CE	1:A:235:LEU:CD1	2.34	0.97
1:C:161:ASN:HB3	1:C:411:ARG:HH11	1.29	0.96
1:C:467:SER:N	1:C:468:PRO:HD2	1.81	0.96
1:C:214:LYS:CE	1:C:235:LEU:CD1	2.42	0.96
1:C:167:VAL:CA	1:C:218:PHE:CE1	2.44	0.95
1:C:219:ASP:CB	1:C:220:PRO:HD3	1.95	0.95
2:B:416:PHE:HD1	2:B:461:CYS:HG	0.95	0.95
2:B:364:ILE:HD11	2:B:378:LYS:N	1.83	0.94
1:C:467:SER:N	1:C:468:PRO:CD	2.29	0.94
2:D:364:ILE:HD11	2:D:378:LYS:N	1.83	0.94
2:D:364:ILE:HG13	2:D:377:GLY:C	1.85	0.94
1:A:576:MET:HE1	1:A:840:LEU:HD12	1.48	0.93
1:C:167:VAL:HA	1:C:218:PHE:CZ	2.03	0.93
1:C:168:SER:N	1:C:218:PHE:CE2	2.35	0.93
2:B:364:ILE:HG13	2:B:377:GLY:C	1.86	0.92
1:A:115:ARG:HD3	1:A:135:LEU:CD1	1.99	0.91
1:A:576:MET:HE1	1:A:840:LEU:CD1	1.97	0.91
1:A:31:ALA:CB	1:A:65:VAL:HG21	1.97	0.90
1:A:31:ALA:HB1	1:A:65:VAL:CG2	2.01	0.90
1:C:88:TYR:HE1	1:C:90:ILE:HB	1.35	0.90
1:A:219:ASP:HB3	1:A:220:PRO:CD	2.01	0.89
2:B:320:SER:OG	2:B:322:TYR:HD2	1.54	0.89
1:A:68:LYS:HB2	1:A:69:PRO:HD2	1.53	0.89
1:C:68:LYS:HB2	1:C:69:PRO:HD2	1.53	0.89
1:A:115:ARG:HD3	1:A:135:LEU:HD12	1.56	0.87
1:C:128:TYR:HB3	1:C:137:PHE:HZ	1.39	0.87
1:C:88:TYR:CD1	1:C:89:ALA:N	2.43	0.87
1:A:115:ARG:HD2	1:A:135:LEU:CD1	2.03	0.86

Continued on next page...

Continued from previous page...

Atom-1	Atom-2	Interatomic distance (Å)	Clash overlap (Å)
1:C:167:VAL:CA	1:C:218:PHE:HZ	1.85	0.86
1:C:308:VAL:HB	1:C:351:TYR:CZ	2.11	0.86
1:C:167:VAL:H	1:C:218:PHE:HE1	0.87	0.86
2:B:465:LEU:HD13	2:B:510:VAL:HG11	1.58	0.85
2:B:414:ALA:HB1	2:B:415:PRO:HD2	1.58	0.85
1:A:31:ALA:HB1	1:A:65:VAL:HG21	1.59	0.85
1:C:108:SER:HB2	1:C:134:HIS:CE1	2.11	0.85
1:C:576:MET:HE3	1:C:840:LEU:HD11	0.86	0.85
2:B:432:ASN:ND2	2:B:456:CYS:HB3	1.91	0.84
1:A:130:ASP:OD2	1:A:132:SER:OG	1.94	0.84
1:C:161:ASN:HB3	1:C:411:ARG:NH1	1.90	0.84
1:A:91:LEU:HD12	1:A:137:PHE:HB2	1.59	0.83
1:A:93:SER:HB2	1:A:122:THR:OG1	1.79	0.83
1:C:88:TYR:CZ	1:C:90:ILE:HG22	2.14	0.83
1:A:88:TYR:CZ	1:A:90:ILE:HG22	2.14	0.82
1:C:214:LYS:HZ3	1:C:235:LEU:HD11	1.42	0.82
1:C:166:LEU:C	1:C:218:PHE:CE1	2.53	0.82
2:D:414:ALA:CB	2:D:415:PRO:HD3	2.00	0.82
1:A:467:SER:N	1:A:468:PRO:CD	2.31	0.82
1:A:93:SER:CB	1:A:122:THR:HG1	1.89	0.81
1:C:93:SER:HB2	1:C:122:THR:OG1	1.80	0.81
1:C:120:GLY:HA2	1:C:138:LEU:O	1.80	0.81
2:B:414:ALA:CB	2:B:735:VAL:HG13	2.11	0.81
1:C:330:VAL:HG11	2:D:79:LYS:HZ1	1.45	0.81
1:A:213:GLU:CG	1:A:235:LEU:HD22	2.10	0.81
1:C:213:GLU:OE2	1:C:235:LEU:HD23	1.80	0.81
1:A:118:VAL:HG21	1:A:136:SER:O	1.79	0.79
1:A:88:TYR:CD1	1:A:89:ALA:N	2.51	0.79
2:D:414:ALA:HB1	2:D:415:PRO:CD	2.03	0.79
1:A:236:GLU:OE2	1:A:416:SER:HB3	1.84	0.78
1:A:213:GLU:OE2	1:A:235:LEU:HD23	1.80	0.78
1:A:213:GLU:CD	1:A:235:LEU:HD22	2.04	0.78
1:C:213:GLU:CD	1:C:235:LEU:HD22	2.04	0.77
2:B:364:ILE:HD11	2:B:378:LYS:H	1.48	0.77
1:A:159:ASN:CB	1:A:411:ARG:HD2	2.08	0.77
1:A:214:LYS:HZ3	1:A:235:LEU:HD11	1.43	0.77
1:C:128:TYR:HB3	1:C:137:PHE:CZ	2.20	0.77
2:D:414:ALA:O	2:D:418:ILE:HG12	1.84	0.77
1:C:308:VAL:HB	1:C:351:TYR:OH	1.84	0.76
1:C:167:VAL:HA	1:C:218:PHE:HZ	1.43	0.76
1:A:576:MET:HE3	1:A:840:LEU:CG	2.16	0.76

Continued on next page...

Continued from previous page...

Atom-1	Atom-2	Interatomic distance (Å)	Clash overlap (Å)
1:C:115:ARG:HD3	1:C:135:LEU:HD11	1.66	0.76
1:C:213:GLU:CG	1:C:235:LEU:HD22	2.16	0.76
1:C:168:SER:N	1:C:218:PHE:CZ	2.50	0.76
1:A:27:VAL:O	1:A:61:GLN:N	2.15	0.76
1:A:576:MET:HE3	1:A:840:LEU:HD11	0.78	0.76
1:A:28:ASN:CA	1:A:61:GLN:O	2.33	0.75
1:A:821:SER:O	1:A:823:SER:N	2.19	0.75
1:C:214:LYS:NZ	1:C:235:LEU:CD1	2.48	0.75
1:A:88:TYR:HH	1:A:90:ILE:HG22	1.46	0.75
1:A:219:ASP:CB	1:A:220:PRO:HD3	2.08	0.75
1:A:576:MET:CE	1:A:840:LEU:CG	2.65	0.75
2:D:364:ILE:HG13	2:D:377:GLY:HA3	0.75	0.75
2:D:364:ILE:HD11	2:D:378:LYS:H	1.48	0.75
1:A:88:TYR:HE1	1:A:90:ILE:CB	1.99	0.75
1:C:128:TYR:O	1:C:137:PHE:HZ	1.70	0.75
1:C:166:LEU:C	1:C:218:PHE:CZ	2.59	0.75
1:C:213:GLU:OE2	1:C:235:LEU:HD22	1.87	0.75
1:C:88:TYR:HE1	1:C:90:ILE:CB	2.00	0.74
1:A:118:VAL:O	1:A:137:PHE:HA	1.85	0.74
2:B:418:ILE:N	2:B:458:LYS:O	2.18	0.74
2:B:320:SER:OG	2:B:322:TYR:CD2	2.41	0.74
2:B:364:ILE:HG13	2:B:377:GLY:HA3	0.74	0.74
1:C:68:LYS:HB2	1:C:69:PRO:CD	2.18	0.73
1:A:121:LEU:HD23	1:A:121:LEU:N	2.04	0.73
1:C:330:VAL:HG11	2:D:79:LYS:NZ	2.03	0.73
1:C:88:TYR:HH	1:C:90:ILE:HG22	1.50	0.73
1:A:91:LEU:CD1	1:A:137:PHE:HB2	2.19	0.73
1:A:108:SER:HB2	1:A:134:HIS:CD2	2.23	0.73
1:A:222:THR:HG23	1:A:223:LYS:HD3	1.70	0.73
1:C:576:MET:CE	1:C:840:LEU:CG	2.65	0.73
1:A:68:LYS:HB2	1:A:69:PRO:CD	2.18	0.72
1:A:118:VAL:HG23	1:A:136:SER:C	2.05	0.72
1:A:88:TYR:OH	1:A:90:ILE:HG21	1.85	0.72
1:A:236:GLU:OE2	1:A:416:SER:CB	2.36	0.72
2:B:320:SER:HG	2:B:322:TYR:HD2	1.37	0.72
1:C:330:VAL:CG1	2:D:79:LYS:CE	2.67	0.71
1:A:213:GLU:CD	1:A:235:LEU:CD2	2.59	0.71
2:B:416:PHE:CD1	2:B:461:CYS:SG	2.83	0.71
1:A:93:SER:HB2	1:A:122:THR:H	1.55	0.71
2:B:414:ALA:HB1	2:B:735:VAL:HG13	1.73	0.71
1:A:169:ASP:HB3	1:A:219:ASP:HB2	1.71	0.71

Continued on next page...

Continued from previous page...

Atom-1	Atom-2	Interatomic distance (Å)	Clash overlap (Å)
1:C:121:LEU:N	1:C:121:LEU:HD23	2.05	0.71
1:C:159:ASN:HB3	1:C:411:ARG:CD	2.17	0.71
1:C:88:TYR:CE1	1:C:90:ILE:HB	2.24	0.70
1:C:93:SER:HB2	1:C:122:THR:H	1.55	0.70
1:A:31:ALA:C	1:A:65:VAL:HG22	2.12	0.70
1:C:167:VAL:O	1:C:218:PHE:CE1	2.44	0.70
1:C:137:PHE:HD1	1:C:137:PHE:H	1.39	0.70
2:B:459:GLY:O	2:B:795:LEU:HD21	1.92	0.69
1:C:576:MET:HE1	1:C:840:LEU:CG	2.22	0.69
1:A:213:GLU:HG2	1:A:235:LEU:HD22	1.75	0.69
1:C:330:VAL:HG21	2:D:79:LYS:NZ	2.08	0.69
2:B:460:PHE:HE1	2:B:792:LEU:HB3	1.59	0.68
1:C:46:VAL:HG13	1:C:60:LEU:HB3	1.75	0.68
2:D:364:ILE:CD1	2:D:378:LYS:N	2.56	0.68
1:C:586:LEU:HA	1:C:589:LEU:HD22	1.76	0.68
1:C:467:SER:H	1:C:468:PRO:HD3	1.52	0.68
1:A:214:LYS:NZ	1:A:235:LEU:CD1	2.48	0.68
2:D:432:ASN:ND2	2:D:456:CYS:CB	2.56	0.68
1:C:330:VAL:HG11	2:D:79:LYS:CE	2.24	0.68
1:A:330:VAL:HG13	2:B:79:LYS:HE3	1.76	0.67
1:A:86:GLN:O	1:A:325:PRO:CD	2.28	0.67
1:A:72:ILE:H	1:A:72:ILE:HD12	1.59	0.67
1:A:88:TYR:CE1	1:A:90:ILE:HB	2.18	0.66
1:A:236:GLU:OE1	1:A:413:TYR:OH	2.13	0.66
1:A:586:LEU:HA	1:A:589:LEU:HD22	1.75	0.66
2:B:364:ILE:CD1	2:B:378:LYS:N	2.56	0.66
1:C:119:LEU:HA	1:C:138:LEU:HB2	1.78	0.66
2:D:320:SER:CB	2:D:322:TYR:CE2	2.78	0.66
2:B:158:LEU:O	2:B:162:GLU:HB2	1.96	0.66
1:C:72:ILE:HD12	1:C:72:ILE:H	1.59	0.66
2:D:158:LEU:O	2:D:162:GLU:HB2	1.96	0.66
1:C:576:MET:SD	1:C:840:LEU:HD12	2.36	0.66
2:D:366:LEU:HG	2:D:375:ARG:HA	1.78	0.66
2:B:366:LEU:HG	2:B:375:ARG:HA	1.78	0.65
1:A:576:MET:SD	1:A:840:LEU:HD12	2.36	0.65
1:A:213:GLU:OE2	1:A:235:LEU:HD22	1.93	0.65
1:A:93:SER:HB2	1:A:122:THR:N	2.11	0.65
1:C:330:VAL:HG11	2:D:79:LYS:HE3	1.78	0.65
1:A:213:GLU:OE2	1:A:235:LEU:HD21	1.95	0.65
2:B:329:ILE:O	2:B:333:ASN:ND2	2.30	0.65
1:A:31:ALA:CA	1:A:65:VAL:HG22	2.27	0.65

Continued on next page...

Continued from previous page...

Atom-1	Atom-2	Interatomic distance (Å)	Clash overlap (Å)
1:C:93:SER:HB2	1:C:122:THR:N	2.11	0.65
1:A:330:VAL:CG1	2:B:79:LYS:HE3	2.28	0.64
2:D:329:ILE:O	2:D:333:ASN:ND2	2.30	0.64
1:A:546:GLN:O	2:D:774:ARG:NH2	2.29	0.64
1:C:350:LYS:O	1:C:350:LYS:HD3	1.98	0.64
2:D:279:SER:C	2:D:365:ILE:HG23	2.17	0.64
2:D:364:ILE:HG12	2:D:377:GLY:O	1.98	0.63
1:A:285:ASP:HB3	1:A:379:ASN:HB2	1.80	0.63
2:B:279:SER:C	2:B:365:ILE:HG23	2.18	0.63
1:C:128:TYR:O	1:C:137:PHE:CE1	2.52	0.63
1:C:88:TYR:OH	1:C:90:ILE:HG21	1.97	0.63
2:B:364:ILE:HG12	2:B:377:GLY:O	1.98	0.63
1:A:128:TYR:C	1:A:137:PHE:HZ	1.99	0.62
2:D:459:GLY:O	2:D:795:LEU:HD21	1.98	0.62
1:A:330:VAL:HG11	2:B:79:LYS:HZ1	1.64	0.62
1:C:226:THR:HG22	1:C:255:ALA:HB1	1.81	0.62
1:C:601:LEU:HD11	2:D:832:SER:HB2	1.81	0.62
1:A:467:SER:H	1:A:468:PRO:HD3	1.59	0.62
2:B:280:VAL:HB	2:B:365:ILE:HG12	1.81	0.62
1:C:213:GLU:CD	1:C:235:LEU:CD2	2.62	0.62
1:A:128:TYR:O	1:A:137:PHE:CE1	2.49	0.62
3:H:68:PHE:HB3	3:H:81:LEU:HD11	1.82	0.62
1:C:167:VAL:N	1:C:218:PHE:HZ	1.89	0.62
2:D:416:PHE:O	2:D:459:GLY:HA3	1.99	0.62
3:H:19:LYS:HE2	3:H:80:TYR:HB3	1.80	0.62
1:A:161:ASN:HB3	1:A:411:ARG:NH1	2.14	0.61
2:D:280:VAL:HB	2:D:365:ILE:HG12	1.81	0.61
1:C:308:VAL:CB	1:C:351:TYR:CZ	2.82	0.61
1:C:153:GLU:O	1:C:157:VAL:HG23	2.00	0.61
1:A:773:LEU:HD12	1:A:776:ARG:HE	1.65	0.61
1:A:241:ILE:HG23	1:A:270:VAL:HG21	1.81	0.61
2:D:186:ILE:O	2:D:190:ILE:HB	2.01	0.61
2:B:186:ILE:O	2:B:190:ILE:HB	2.01	0.61
1:C:68:LYS:HD2	1:C:73:GLN:HB2	1.81	0.61
1:C:225:VAL:O	1:C:225:VAL:HG23	2.01	0.61
1:C:241:ILE:HG23	1:C:270:VAL:HG21	1.81	0.61
2:B:429:CYS:HB3	2:B:432:ASN:ND2	2.15	0.61
2:D:34:SER:N	2:D:65:VAL:O	2.34	0.60
3:M:99:PRO:HA	3:M:109:PHE:HB3	1.83	0.60
2:B:34:SER:N	2:B:65:VAL:O	2.34	0.60
2:D:438:LYS:HB2	2:D:480:LEU:HD12	1.83	0.60

Continued on next page...

Continued from previous page...

Atom-1	Atom-2	Interatomic distance (Å)	Clash overlap (Å)
2:B:534:ILE:HG23	2:B:757:PHE:HB3	1.82	0.60
1:C:128:TYR:CB	1:C:137:PHE:HZ	2.13	0.60
1:A:68:LYS:HD2	1:A:73:GLN:HB2	1.81	0.60
3:H:51:ILE:HD12	3:H:72:ARG:HD2	1.82	0.60
3:H:52:SER:O	3:H:72:ARG:NH1	2.34	0.60
2:D:534:ILE:HG23	2:D:757:PHE:HB3	1.82	0.60
1:C:576:MET:SD	1:C:840:LEU:CD1	2.90	0.60
1:C:579:PHE:O	1:C:583:LEU:N	2.35	0.60
1:C:87:VAL:HG22	1:C:87:VAL:O	2.02	0.59
1:C:380:ARG:HG3	1:C:381:LYS:HG2	1.82	0.59
2:D:364:ILE:CG1	2:D:378:LYS:N	2.65	0.59
2:D:429:CYS:HB3	2:D:432:ASN:ND2	2.17	0.59
1:C:88:TYR:CE1	1:C:90:ILE:HG22	2.37	0.59
1:C:576:MET:HE3	1:C:840:LEU:CG	2.26	0.59
1:C:773:LEU:HD12	1:C:776:ARG:HE	1.65	0.59
2:B:364:ILE:CG1	2:B:378:LYS:N	2.66	0.59
2:D:83:THR:O	2:D:87:ASP:HB2	2.02	0.59
1:A:576:MET:SD	1:A:840:LEU:CD1	2.89	0.59
1:C:213:GLU:HG2	1:C:235:LEU:HD22	1.84	0.59
2:D:184:ASN:OD1	2:D:187:ARG:NH2	2.36	0.59
1:A:222:THR:HA	1:A:251:THR:HG21	1.85	0.59
2:B:83:THR:O	2:B:87:ASP:HB2	2.02	0.59
2:B:281:SER:OG	2:B:283:ASP:OD1	2.20	0.59
1:A:93:SER:OG	1:A:94:HIS:N	2.35	0.59
2:B:184:ASN:OD1	2:B:187:ARG:NH2	2.36	0.59
2:B:438:LYS:HB2	2:B:480:LEU:HD12	1.83	0.59
2:B:555:SER:HA	2:B:559:TRP:HB2	1.84	0.59
1:C:285:ASP:N	1:C:285:ASP:OD1	2.36	0.59
2:D:384:LEU:HD21	2:D:386:MET:HG2	1.85	0.59
1:C:72:ILE:HG21	2:D:321:CYS:O	2.03	0.58
1:A:576:MET:CE	1:A:840:LEU:HG	2.34	0.58
2:D:181:ASP:N	2:D:181:ASP:OD1	2.37	0.58
2:D:364:ILE:CD1	2:D:377:GLY:HA3	2.30	0.58
1:C:283:ALA:HB1	1:C:287:ILE:HG13	1.86	0.58
2:D:555:SER:HA	2:D:559:TRP:HB2	1.84	0.58
3:M:109:PHE:O	4:N:36:TYR:OH	2.16	0.58
2:B:414:ALA:CB	2:B:735:VAL:CG1	2.82	0.58
1:A:253:TYR:HE1	1:A:284:PRO:HD3	1.68	0.58
1:A:765:CYS:SG	1:A:819:CYS:SG	3.01	0.58
2:B:366:LEU:HG	2:B:374:GLU:O	2.04	0.58
2:B:410:THR:OG1	2:B:411:LEU:N	2.37	0.58

Continued on next page...

Continued from previous page...

Atom-1	Atom-2	Interatomic distance (Å)	Clash overlap (Å)
1:C:462:ASP:OD1	1:C:464:SER:O	2.22	0.58
1:A:442:LYS:NZ	1:A:443:GLU:O	2.34	0.58
1:A:576:MET:HE1	1:A:840:LEU:CG	2.33	0.57
1:A:579:PHE:O	1:A:583:LEU:N	2.35	0.57
1:A:28:ASN:HD21	1:A:84:SER:HB2	1.70	0.57
1:C:253:TYR:HE1	1:C:284:PRO:HD3	1.68	0.57
2:D:366:LEU:HG	2:D:374:GLU:O	2.04	0.57
2:D:385:GLN:O	2:D:385:GLN:HG2	2.03	0.57
2:D:102:ASP:OD1	2:D:102:ASP:N	2.38	0.57
2:D:429:CYS:HB3	2:D:432:ASN:HD22	1.69	0.57
4:L:49:HIS:HB2	4:L:53:SER:HB2	1.86	0.57
1:A:33:LEU:HD12	1:A:39:GLU:CD	2.17	0.57
1:A:124:ARG:HH21	1:A:144:TYR:HA	1.69	0.57
1:C:124:ARG:HH21	1:C:144:TYR:HA	1.70	0.57
2:D:281:SER:OG	2:D:282:TYR:N	2.36	0.57
1:C:236:GLU:OE2	1:C:416:SER:CB	2.53	0.57
2:D:229:LEU:HG	2:D:256:TRP:HB3	1.86	0.57
1:A:87:VAL:HG22	1:A:87:VAL:O	2.02	0.57
1:A:283:ALA:HB1	1:A:287:ILE:HG13	1.86	0.57
1:C:168:SER:CA	1:C:218:PHE:CD2	2.87	0.57
2:B:364:ILE:CD1	2:B:377:GLY:HA3	2.30	0.57
1:C:93:SER:OG	1:C:94:HIS:N	2.35	0.57
1:C:372:TYR:H	1:C:388:TYR:HB3	1.69	0.57
1:A:372:TYR:H	1:A:388:TYR:HB3	1.69	0.57
4:N:11:LEU:HB2	4:N:103:LEU:HA	1.87	0.57
1:A:159:ASN:HB3	1:A:411:ARG:HD3	1.81	0.57
1:A:216:LEU:HD13	1:A:228:LEU:HD22	1.86	0.57
2:B:429:CYS:HB3	2:B:432:ASN:HD22	1.70	0.57
1:C:222:THR:HA	1:C:251:THR:HG21	1.86	0.57
1:A:58:ILE:HG23	1:A:317:LEU:HD12	1.87	0.56
1:C:213:GLU:OE2	1:C:235:LEU:HD21	1.98	0.56
1:C:461:ASN:HB3	1:C:469:ARG:HD2	1.87	0.56
1:A:153:GLU:O	1:A:157:VAL:HG23	2.04	0.56
1:A:28:ASN:HB2	1:A:63:THR:HG23	1.87	0.56
2:B:539:SER:HA	2:B:721:LEU:HD21	1.87	0.56
1:C:576:MET:CE	1:C:840:LEU:HG	2.34	0.56
3:H:38:ARG:HD3	3:H:86:LEU:HD22	1.87	0.56
1:C:58:ILE:HG23	1:C:317:LEU:HD12	1.88	0.56
3:M:16:GLY:O	3:M:84:ASN:ND2	2.38	0.56
3:M:52:SER:O	3:M:72:ARG:NH1	2.38	0.56
2:B:281:SER:OG	2:B:282:TYR:N	2.36	0.56

Continued on next page...

Continued from previous page...

Atom-1	Atom-2	Interatomic distance (Å)	Clash overlap (Å)
2:D:281:SER:OG	2:D:283:ASP:OD1	2.20	0.56
2:B:229:LEU:HG	2:B:256:TRP:HB3	1.85	0.56
2:D:539:SER:HA	2:D:721:LEU:HD21	1.87	0.56
2:D:364:ILE:HG13	2:D:377:GLY:N	2.11	0.56
2:D:432:ASN:HD22	2:D:456:CYS:CB	2.09	0.56
4:L:11:LEU:HB2	4:L:103:LEU:HA	1.87	0.56
2:B:627:THR:HB	1:C:852:ILE:HG12	1.88	0.56
2:B:774:ARG:NH2	1:C:546:GLN:O	2.38	0.56
1:C:330:VAL:HG21	2:D:79:LYS:HZ1	1.69	0.56
4:N:49:HIS:HB2	4:N:53:SER:HB2	1.86	0.56
1:C:88:TYR:CE1	1:C:90:ILE:CG2	2.90	0.55
1:C:139:ARG:HB2	1:C:366:ASP:HA	1.89	0.55
1:C:438:ASP:N	1:C:438:ASP:OD1	2.37	0.55
3:H:50:TYR:HE1	4:L:95:TYR:HB2	1.71	0.55
1:A:552:LYS:NZ	2:D:526:SER:O	2.40	0.55
1:C:86:GLN:O	1:C:325:PRO:CD	2.31	0.55
1:C:308:VAL:HA	1:C:351:TYR:CE1	2.42	0.55
2:D:526:SER:OG	2:D:527:VAL:N	2.40	0.55
3:M:68:PHE:HB3	3:M:81:LEU:HD11	1.88	0.55
1:C:634:VAL:O	2:D:616:ASN:ND2	2.35	0.55
1:A:115:ARG:NE	1:A:135:LEU:HD11	2.21	0.55
1:A:88:TYR:CE1	1:A:90:ILE:HG22	2.42	0.55
2:B:102:ASP:OD1	2:B:102:ASP:N	2.38	0.55
1:C:168:SER:CB	1:C:218:PHE:O	2.55	0.55
1:C:576:MET:HE1	1:C:840:LEU:HG	1.88	0.55
1:C:219:ASP:CB	1:C:220:PRO:CD	2.59	0.55
1:A:506:GLY:O	1:A:544:ARG:NH1	2.39	0.55
1:C:519:TRP:NE1	1:C:547:TYR:OH	2.40	0.55
2:D:305:SER:OG	2:D:313:PHE:O	2.18	0.55
2:B:181:ASP:N	2:B:181:ASP:OD1	2.37	0.54
2:B:526:SER:OG	2:B:527:VAL:N	2.40	0.54
1:C:167:VAL:O	1:C:218:PHE:CD1	2.59	0.54
2:D:535:SER:OG	2:D:536:VAL:N	2.40	0.54
1:C:510:ARG:NH1	1:C:514:SER:O	2.39	0.54
2:B:305:SER:OG	2:B:313:PHE:O	2.18	0.54
1:A:285:ASP:OD1	1:A:285:ASP:N	2.36	0.54
1:A:170:ASP:HB3	1:A:172:GLU:HG3	1.90	0.54
1:A:519:TRP:NE1	1:A:547:TYR:OH	2.40	0.54
2:D:38:ALA:HB3	2:D:97:VAL:HA	1.90	0.54
2:D:164:TYR:OH	2:D:386:MET:HG3	2.07	0.54
1:A:32:VAL:H	1:A:92:VAL:HG21	1.73	0.54

Continued on next page...

Continued from previous page...

Atom-1	Atom-2	Interatomic distance (Å)	Clash overlap (Å)
3:M:4:LEU:HB2	3:M:113:GLY:HA2	1.88	0.54
1:A:33:LEU:CD1	1:A:39:GLU:OE2	2.30	0.54
1:A:88:TYR:CE1	1:A:90:ILE:CG2	2.91	0.54
2:B:682:ARG:NH2	2:B:724:GLY:O	2.41	0.54
1:A:88:TYR:CE1	1:A:90:ILE:CB	2.86	0.54
2:B:437:GLN:NE2	2:B:452:TYR:O	2.35	0.54
1:C:157:VAL:HG22	1:C:392:HIS:CE1	2.43	0.54
2:D:133:ILE:HG22	2:D:134:MET:HG2	1.90	0.54
2:B:442:SER:OG	2:B:443:GLU:N	2.41	0.54
1:A:396:ASN:N	1:A:396:ASN:OD1	2.41	0.54
2:B:133:ILE:HG22	2:B:134:MET:HG2	1.90	0.53
2:B:160:ILE:HG21	2:B:365:ILE:HD11	1.88	0.53
2:B:364:ILE:HG13	2:B:377:GLY:N	2.11	0.53
1:C:168:SER:HB3	1:C:218:PHE:CD2	2.43	0.53
1:A:157:VAL:HG22	1:A:392:HIS:CE1	2.42	0.53
1:C:41:MET:SD	1:C:299:SER:OG	2.66	0.53
2:D:160:ILE:HG21	2:D:365:ILE:HD11	1.88	0.53
1:A:680:ARG:HH22	1:A:826:PRO:HB3	1.73	0.53
2:B:526:SER:O	1:C:552:LYS:NZ	2.42	0.53
1:C:680:ARG:HH22	1:C:826:PRO:HB3	1.73	0.53
2:D:682:ARG:NH2	2:D:724:GLY:O	2.41	0.53
1:A:128:TYR:HB3	1:A:137:PHE:CZ	2.43	0.53
1:C:111:ALA:HA	1:C:116:ILE:HD12	1.90	0.53
1:C:114:TYR:OH	2:D:77:ASP:OD1	2.24	0.53
2:D:39:VAL:HG21	2:D:70:LEU:HA	1.91	0.53
2:B:535:SER:OG	2:B:536:VAL:N	2.41	0.53
3:H:33:THR:OG1	3:H:34:MET:N	2.42	0.53
1:C:380:ARG:O	1:C:381:LYS:CB	2.55	0.53
2:D:442:SER:OG	2:D:443:GLU:N	2.41	0.53
1:A:111:ALA:HA	1:A:116:ILE:HD12	1.90	0.52
1:C:506:GLY:O	1:C:544:ARG:NH1	2.39	0.52
1:A:820:ASP:O	1:A:822:ARG:N	2.42	0.52
1:C:73:GLN:O	1:C:76:LEU:HB2	2.10	0.52
1:C:692:ARG:HH21	2:D:800:ILE:HG21	1.74	0.52
2:B:38:ALA:HB3	2:B:97:VAL:HA	1.90	0.52
2:B:430:MET:O	2:B:433:THR:CG2	2.57	0.52
1:C:166:LEU:C	1:C:218:PHE:HE1	1.99	0.52
1:A:41:MET:SD	1:A:299:SER:OG	2.66	0.52
2:B:432:ASN:HD22	2:B:456:CYS:HB3	1.72	0.52
1:C:84:SER:HA	1:C:327:ARG:NH1	2.24	0.52
1:C:442:LYS:NZ	1:C:443:GLU:O	2.34	0.52

Continued on next page...

Continued from previous page...

Atom-1	Atom-2	Interatomic distance (Å)	Clash overlap (Å)
1:C:170:ASP:HB3	1:C:172:GLU:HG3	1.90	0.52
1:C:380:ARG:O	1:C:381:LYS:HB3	2.09	0.52
1:A:33:LEU:N	1:A:65:VAL:HG13	2.25	0.52
1:C:236:GLU:OE2	1:C:416:SER:HB3	2.10	0.52
1:C:725:ARG:HH12	1:C:729:LYS:HE3	1.74	0.52
3:M:93:MET:HA	3:M:117:THR:HA	1.90	0.52
2:D:322:TYR:CD1	2:D:323:ASN:HB2	2.45	0.52
2:D:703:HIS:HA	2:D:706:MET:HB2	1.92	0.52
1:C:315:GLU:O	1:C:319:LYS:NZ	2.43	0.52
2:B:460:PHE:CE1	2:B:792:LEU:HB3	2.44	0.52
1:C:396:ASN:N	1:C:396:ASN:OD1	2.41	0.52
4:L:4:MET:HB2	4:L:96:THR:HG22	1.92	0.52
2:B:414:ALA:CB	2:B:415:PRO:HD2	2.26	0.51
1:C:169:ASP:OD1	1:C:174:ARG:NH1	2.43	0.51
4:N:4:MET:HB2	4:N:96:THR:HG22	1.92	0.51
1:A:115:ARG:CD	1:A:135:LEU:HD12	2.21	0.51
1:A:169:ASP:OD1	1:A:174:ARG:NH1	2.43	0.51
1:C:777:SER:OG	1:C:778:GLY:N	2.43	0.51
4:N:48:ILE:HG23	4:N:52:SER:HA	1.92	0.51
1:A:73:GLN:O	1:A:76:LEU:HB2	2.09	0.51
1:A:315:GLU:O	1:A:319:LYS:NZ	2.43	0.51
2:B:653:PHE:HA	1:C:827:ALA:HB1	1.92	0.51
4:L:48:ILE:HG23	4:L:52:SER:HA	1.92	0.51
2:B:39:VAL:HG21	2:B:70:LEU:HA	1.91	0.51
2:D:459:GLY:C	2:D:795:LEU:HD21	2.30	0.51
2:B:703:HIS:HA	2:B:706:MET:HB2	1.92	0.51
1:C:168:SER:HA	1:C:218:PHE:CD2	2.45	0.51
1:C:88:TYR:CE1	1:C:89:ALA:C	2.84	0.51
2:D:279:SER:N	2:D:365:ILE:CG2	2.74	0.51
1:A:84:SER:HA	1:A:327:ARG:NH1	2.26	0.50
1:A:777:SER:OG	1:A:778:GLY:N	2.43	0.50
2:B:95:GLN:O	2:B:121:THR:OG1	2.29	0.50
2:D:437:GLN:NE2	2:D:452:TYR:O	2.35	0.50
1:A:725:ARG:HH12	1:A:729:LYS:HE3	1.75	0.50
1:C:85:SER:HA	1:C:88:TYR:HD2	1.76	0.50
1:A:576:MET:HE1	1:A:840:LEU:HG	1.94	0.50
1:C:169:ASP:HB3	1:C:219:ASP:HB2	1.94	0.50
1:A:88:TYR:CZ	1:A:90:ILE:CG2	2.82	0.50
2:B:430:MET:O	2:B:433:THR:HG22	2.11	0.50
1:C:28:ASN:ND2	1:C:84:SER:HB2	2.27	0.50
1:C:584:TRP:HB3	1:C:586:LEU:H	1.77	0.50

Continued on next page...

Continued from previous page...

Atom-1	Atom-2	Interatomic distance (Å)	Clash overlap (Å)
2:D:95:GLN:O	2:D:121:THR:OG1	2.29	0.50
2:D:414:ALA:O	2:D:418:ILE:CG1	2.57	0.50
3:M:38:ARG:HD3	3:M:86:LEU:HD22	1.94	0.50
2:B:415:PRO:HG3	2:B:738:TYR:CD2	2.46	0.50
2:B:428:THR:OG1	2:B:429:CYS:N	2.45	0.50
2:B:432:ASN:ND2	2:B:456:CYS:CB	2.69	0.50
2:D:41:LEU:HB3	2:D:73:MET:H	1.77	0.50
4:N:29:ILE:HG12	4:N:69:ARG:HA	1.94	0.50
1:A:136:SER:HB3	1:A:343:LYS:HD2	1.93	0.50
1:A:284:PRO:HD2	1:A:287:ILE:HD11	1.94	0.50
2:D:419:VAL:HG22	2:D:457:CYS:SG	2.51	0.50
1:A:584:TRP:HB3	1:A:586:LEU:H	1.77	0.50
1:A:601:LEU:HD11	2:B:832:SER:HB2	1.94	0.50
2:B:65:VAL:HG11	3:M:105:SER:HA	1.94	0.50
2:B:279:SER:N	2:B:365:ILE:CG2	2.75	0.49
2:B:509:ALA:HB3	2:B:765:ALA:HB3	1.95	0.49
2:B:810:SER:O	2:B:812:GLN:NE2	2.45	0.49
2:D:244:ALA:HB1	2:D:249:LEU:HB2	1.94	0.49
2:D:428:THR:OG1	2:D:429:CYS:N	2.45	0.49
2:D:810:SER:O	2:D:812:GLN:NE2	2.45	0.49
1:A:85:SER:HA	1:A:88:TYR:HD2	1.76	0.49
1:A:411:ARG:HA	1:A:411:ARG:NE	2.27	0.49
1:A:236:GLU:OE2	1:A:416:SER:HB2	2.12	0.49
2:B:97:VAL:HB	2:B:123:ILE:HG12	1.94	0.49
1:C:284:PRO:HD2	1:C:287:ILE:HD11	1.94	0.49
4:L:29:ILE:HG12	4:L:69:ARG:HA	1.94	0.49
2:B:289:LEU:HB2	2:B:292:ARG:HG2	1.93	0.49
2:D:357:GLN:HB2	2:D:360:PRO:HB3	1.94	0.49
2:D:366:LEU:CG	2:D:375:ARG:HA	2.42	0.49
2:B:357:GLN:HB2	2:B:360:PRO:HB3	1.94	0.49
2:D:277:LEU:O	2:D:372:LYS:NZ	2.45	0.49
1:A:410:PRO:O	1:A:411:ARG:C	2.47	0.49
2:B:41:LEU:HB3	2:B:73:MET:H	1.77	0.49
2:B:366:LEU:CG	2:B:375:ARG:HA	2.42	0.49
1:C:544:ARG:NH2	1:C:709:SER:OG	2.45	0.49
2:B:244:ALA:HB1	2:B:249:LEU:HB2	1.94	0.49
1:C:114:TYR:CZ	1:C:332:ASN:HB3	2.48	0.49
1:C:133:ILE:HD13	1:C:133:ILE:N	2.26	0.49
1:C:226:THR:HG22	1:C:255:ALA:CB	2.43	0.49
2:B:408:ILE:HG23	2:B:510:VAL:HG22	1.95	0.49
2:D:97:VAL:HB	2:D:123:ILE:HG12	1.94	0.49

Continued on next page...

Continued from previous page...

Atom-1	Atom-2	Interatomic distance (Å)	Clash overlap (Å)
2:D:126:ILE:H	2:D:131:SER:HB2	1.77	0.49
2:D:174:THR:H	2:D:230:LEU:HD13	1.77	0.49
2:D:289:LEU:HB2	2:D:292:ARG:HG2	1.93	0.49
1:A:70:ASN:HB3	1:A:73:GLN:HG2	1.95	0.48
1:A:572:LEU:HD11	1:A:830:THR:HG22	1.95	0.48
2:D:86:CYS:HA	2:D:89:MET:HB2	1.95	0.48
2:D:156:VAL:HG21	2:D:362:LEU:HD21	1.95	0.48
2:D:464:ILE:HG13	2:D:529:PHE:HZ	1.79	0.48
3:M:11:LEU:HG	3:M:118:VAL:HB	1.95	0.48
3:M:32:TYR:O	3:M:72:ARG:NH2	2.47	0.48
1:A:28:ASN:HA	1:A:61:GLN:C	2.29	0.48
1:A:378:GLN:OE1	1:A:380:ARG:NH2	2.46	0.48
1:A:544:ARG:NH2	1:A:709:SER:OG	2.45	0.48
1:C:32:VAL:O	1:C:32:VAL:HG12	2.13	0.48
3:M:29:PHE:HA	3:M:32:TYR:HB2	1.94	0.48
2:B:86:CYS:HA	2:B:89:MET:HB2	1.96	0.48
2:B:464:ILE:HG13	2:B:529:PHE:HZ	1.79	0.48
2:B:174:THR:H	2:B:230:LEU:HD13	1.77	0.48
1:C:88:TYR:HD1	1:C:89:ALA:H	1.62	0.48
1:C:375:MET:HB3	1:C:382:LEU:HG	1.96	0.48
1:C:572:LEU:HD11	1:C:830:THR:HG22	1.95	0.48
3:H:24:ALA:HB3	3:H:77:ASN:HB3	1.96	0.48
4:N:6:GLN:HB2	4:N:100:GLY:H	1.79	0.48
2:B:216:ILE:HG23	2:B:243:VAL:HG11	1.95	0.48
1:C:362:ASN:OD1	1:C:366:ASP:N	2.42	0.48
1:A:93:SER:HB2	1:A:122:THR:CB	2.43	0.48
1:A:114:TYR:CZ	1:A:332:ASN:HB3	2.48	0.48
2:B:277:LEU:O	2:B:372:LYS:NZ	2.45	0.48
2:D:216:ILE:HG23	2:D:243:VAL:HG11	1.95	0.48
3:H:67:ARG:HH21	3:H:84:ASN:HD21	1.61	0.48
1:A:31:ALA:CB	1:A:65:VAL:HG23	2.02	0.48
1:A:377:LEU:HG	1:A:379:ASN:H	1.76	0.48
1:A:441:CYS:SG	1:A:442:LYS:N	2.87	0.48
3:M:50:TYR:CE1	4:N:95:TYR:HB2	2.49	0.48
1:A:457:CYS:HA	1:A:497:VAL:HG23	1.96	0.47
1:A:692:ARG:HH21	2:B:800:ILE:HG21	1.78	0.47
2:B:415:PRO:CG	2:B:738:TYR:CD2	2.97	0.47
2:D:159:ASN:HA	2:D:162:GLU:HB3	1.96	0.47
2:D:362:LEU:HB3	2:D:379:TRP:HB3	1.96	0.47
1:C:457:CYS:HA	1:C:497:VAL:HG23	1.96	0.47
4:L:90:GLN:HB2	4:L:96:THR:HB	1.96	0.47

Continued on next page...

Continued from previous page...

Atom-1	Atom-2	Interatomic distance (Å)	Clash overlap (Å)
1:C:70:ASN:HB3	1:C:73:GLN:HG2	1.95	0.47
1:C:93:SER:HB2	1:C:122:THR:CB	2.43	0.47
1:A:91:LEU:HD23	1:A:91:LEU:HA	1.82	0.47
1:A:119:LEU:HA	1:A:138:LEU:HD12	1.97	0.47
1:A:362:ASN:OD1	1:A:366:ASP:N	2.42	0.47
1:C:166:LEU:C	1:C:218:PHE:HZ	2.12	0.47
2:D:366:LEU:HG	2:D:374:GLU:C	2.34	0.47
3:M:24:ALA:HB3	3:M:77:ASN:HB3	1.96	0.47
1:A:226:THR:HG22	1:A:255:ALA:HB1	1.96	0.47
2:B:126:ILE:H	2:B:131:SER:HB2	1.77	0.47
2:B:216:ILE:HD11	2:B:240:ILE:HG23	1.97	0.47
2:D:459:GLY:O	2:D:795:LEU:CD2	2.60	0.47
1:A:378:GLN:HA	1:A:401:ILE:HD11	1.96	0.47
2:D:430:MET:O	2:D:433:THR:CG2	2.63	0.47
1:A:68:LYS:CB	1:A:69:PRO:CD	2.86	0.47
1:A:461:ASN:HB3	1:A:469:ARG:HD2	1.97	0.47
2:B:366:LEU:HG	2:B:374:GLU:C	2.35	0.47
1:C:39:GLU:HA	1:C:42:PHE:CD2	2.50	0.47
2:D:170:SER:OG	2:D:171:ILE:N	2.48	0.47
2:D:171:ILE:HG22	2:D:202:VAL:HG22	1.96	0.47
2:D:382:LYS:HA	2:D:382:LYS:HD2	1.57	0.47
2:D:507:TYR:O	2:D:767:GLN:NE2	2.48	0.47
1:A:139:ARG:HB2	1:A:366:ASP:HA	1.97	0.47
1:C:166:LEU:N	1:C:241:ILE:O	2.48	0.47
2:D:509:ALA:HB3	2:D:765:ALA:HB3	1.96	0.47
1:A:39:GLU:HA	1:A:42:PHE:CD2	2.50	0.47
1:A:266:TYR:HE1	1:A:268:TRP:HB2	1.80	0.47
1:A:375:MET:HB3	1:A:382:LEU:HG	1.96	0.47
2:B:170:SER:OG	2:B:171:ILE:N	2.48	0.47
2:B:408:ILE:CG2	2:B:510:VAL:HG22	2.44	0.47
4:N:90:GLN:HB2	4:N:96:THR:HB	1.96	0.47
1:C:121:LEU:N	1:C:121:LEU:CD2	2.75	0.46
2:B:156:VAL:HG21	2:B:362:LEU:HD21	1.95	0.46
1:C:222:THR:HG23	1:C:223:LYS:HD3	1.97	0.46
1:A:238:ARG:HE	1:A:266:TYR:HB2	1.81	0.46
2:B:362:LEU:HB3	2:B:379:TRP:HB3	1.96	0.46
2:B:419:VAL:HG22	2:B:457:CYS:SG	2.55	0.46
2:B:507:TYR:O	2:B:767:GLN:NE2	2.48	0.46
2:D:216:ILE:HD11	2:D:240:ILE:HG23	1.97	0.46
2:D:410:THR:OG1	2:D:411:LEU:N	2.37	0.46
1:A:87:VAL:O	1:A:87:VAL:HG13	2.16	0.46

Continued on next page...

Continued from previous page...

Atom-1	Atom-2	Interatomic distance (Å)	Clash overlap (Å)
2:B:420:GLU:HG2	2:B:456:CYS:HB2	1.96	0.46
2:B:641:ILE:HG12	1:C:576:MET:HB3	1.98	0.46
1:C:266:TYR:HE1	1:C:268:TRP:HB2	1.80	0.46
2:B:171:ILE:HG22	2:B:202:VAL:HG22	1.96	0.46
2:B:465:LEU:HA	2:B:468:ILE:HG22	1.98	0.46
1:C:32:VAL:H	1:C:92:VAL:HG21	1.80	0.46
1:C:88:TYR:CE1	1:C:90:ILE:CB	2.88	0.46
4:L:6:GLN:HB2	4:L:100:GLY:H	1.79	0.46
2:B:159:ASN:HA	2:B:162:GLU:HB3	1.96	0.46
2:B:167:TYR:CE2	2:B:198:GLU:HB3	2.51	0.46
2:B:408:ILE:CG2	2:B:510:VAL:CG2	2.94	0.46
1:C:145:SER:HB2	1:C:176:ALA:HB2	1.98	0.46
2:D:279:SER:H	2:D:365:ILE:CG2	2.28	0.46
1:A:166:LEU:N	1:A:241:ILE:O	2.48	0.46
1:C:238:ARG:HE	1:C:266:TYR:HB2	1.81	0.46
1:C:31:ALA:HB3	1:C:65:VAL:HG22	1.98	0.45
1:A:124:ARG:HH22	1:A:147:GLN:HE21	1.64	0.45
2:B:369:LYS:HB2	2:B:369:LYS:HE3	1.70	0.45
1:C:39:GLU:H	1:C:39:GLU:HG3	1.65	0.45
1:C:68:LYS:CB	1:C:69:PRO:CD	2.86	0.45
2:D:683:PHE:HB2	2:D:706:MET:HG2	1.98	0.45
3:H:32:TYR:O	3:H:72:ARG:NH2	2.49	0.45
2:B:230:LEU:HD23	2:B:230:LEU:H	1.82	0.45
2:D:386:MET:HB3	2:D:388:TYR:O	2.15	0.45
1:A:421:ILE:HB	1:A:497:VAL:HG12	1.97	0.45
1:C:421:ILE:HB	1:C:497:VAL:HG12	1.97	0.45
1:C:770:THR:O	1:C:770:THR:OG1	2.35	0.45
2:D:230:LEU:HD23	2:D:230:LEU:H	1.82	0.45
1:A:711:ASP:O	1:A:715:ARG:HB2	2.17	0.45
1:A:802:GLU:OE1	2:D:694:ASN:ND2	2.47	0.45
2:B:216:ILE:O	2:B:220:LEU:HG	2.17	0.45
1:C:88:TYR:CD1	1:C:88:TYR:C	2.90	0.45
2:D:167:TYR:CE2	2:D:198:GLU:HB3	2.51	0.45
2:D:413:GLU:HB3	2:D:414:ALA:H	1.49	0.45
1:A:145:SER:HB2	1:A:176:ALA:HB2	1.98	0.45
2:B:279:SER:H	2:B:365:ILE:CG2	2.29	0.45
2:D:432:ASN:OD1	2:D:458:LYS:HG2	2.17	0.45
2:B:382:LYS:HA	2:B:382:LYS:HD2	1.49	0.45
1:C:43:ARG:HH21	1:C:44:GLU:HG3	1.82	0.45
1:C:88:TYR:CZ	1:C:90:ILE:CG2	2.86	0.45
2:D:465:LEU:HA	2:D:468:ILE:HG22	1.98	0.45

Continued on next page...

Continued from previous page...

Atom-1	Atom-2	Interatomic distance (Å)	Clash overlap (Å)
2:B:286:ASP:HB3	2:B:287:TYR:H	1.68	0.44
1:C:87:VAL:O	1:C:87:VAL:HG13	2.18	0.44
1:C:120:GLY:C	1:C:121:LEU:HD23	2.38	0.44
1:C:124:ARG:HH22	1:C:147:GLN:HE21	1.64	0.44
1:C:359:VAL:HG22	1:C:367:ARG:HD3	1.99	0.44
3:M:33:THR:OG1	3:M:51:ILE:O	2.35	0.44
1:C:155:MET:HG2	1:C:160:TRP:HA	1.99	0.44
1:A:88:TYR:CE1	1:A:89:ALA:C	2.91	0.44
1:A:516:LYS:HA	1:A:516:LYS:HD3	1.73	0.44
2:B:279:SER:H	2:B:365:ILE:HG22	1.83	0.44
1:C:134:HIS:HB2	1:C:135:LEU:H	1.51	0.44
1:C:433:LYS:HA	1:C:433:LYS:HD3	1.83	0.44
2:D:279:SER:H	2:D:365:ILE:HG22	1.82	0.44
1:A:161:ASN:HB2	1:A:239:VAL:HG21	2.00	0.44
1:C:33:LEU:HB2	1:C:65:VAL:HG12	2.00	0.44
1:A:43:ARG:HH21	1:A:44:GLU:HG3	1.82	0.44
1:C:63:THR:HB	1:C:64:SER:H	1.53	0.44
1:C:88:TYR:CG	1:C:89:ALA:N	2.86	0.44
3:M:81:LEU:HD23	3:M:83:MET:HE1	1.98	0.44
1:A:411:ARG:HE	1:A:411:ARG:CA	2.30	0.44
2:B:459:GLY:O	2:B:795:LEU:CD2	2.63	0.44
2:B:683:PHE:HB2	2:B:706:MET:HG2	1.99	0.44
1:C:218:PHE:HE2	1:C:244:ALA:HB2	1.83	0.44
2:D:404:ASP:OD1	2:D:404:ASP:N	2.50	0.44
2:D:673:ARG:HA	2:D:674:PRO:HD3	1.90	0.44
1:A:770:THR:O	1:A:770:THR:OG1	2.35	0.44
2:D:216:ILE:O	2:D:220:LEU:HG	2.17	0.44
1:A:277:GLY:O	1:A:279:ALA:N	2.50	0.44
2:B:158:LEU:O	2:B:162:GLU:CB	2.65	0.44
2:D:86:CYS:HB2	2:D:321:CYS:HB3	1.62	0.44
2:D:407:SER:HA	2:D:477:ASP:HB2	2.00	0.44
2:B:88:LEU:HD23	2:B:94:ILE:HG13	2.00	0.44
1:C:671:ASN:HA	2:D:654:MET:HE1	2.00	0.44
1:A:128:TYR:HB3	1:A:137:PHE:HZ	1.83	0.43
1:A:306:VAL:HA	1:A:309:VAL:HG12	2.00	0.43
1:C:216:LEU:HD13	1:C:228:LEU:HD22	2.00	0.43
2:B:151:GLU:HG2	2:B:185:LYS:HG2	2.01	0.43
2:B:350:SER:OG	2:B:358:MET:SD	2.66	0.43
2:B:805:LYS:HB2	2:B:805:LYS:HE3	1.79	0.43
1:C:161:ASN:HB2	1:C:239:VAL:HG21	2.00	0.43
1:C:306:VAL:HA	1:C:309:VAL:HG12	2.01	0.43

Continued on next page...

Continued from previous page...

Atom-1	Atom-2	Interatomic distance (Å)	Clash overlap (Å)
1:C:317:LEU:HD23	1:C:317:LEU:HA	1.89	0.43
1:C:392:HIS:O	1:C:392:HIS:CG	2.70	0.43
1:A:120:GLY:C	1:A:121:LEU:HD23	2.37	0.43
1:A:121:LEU:N	1:A:121:LEU:CD2	2.74	0.43
1:A:359:VAL:HG22	1:A:367:ARG:HD3	1.99	0.43
1:A:678:LEU:HD23	1:A:678:LEU:HA	1.90	0.43
2:D:430:MET:O	2:D:433:THR:HG22	2.18	0.43
1:A:829:LEU:HD13	1:A:831:CYS:SG	2.58	0.43
2:B:322:TYR:CE1	2:B:323:ASN:HB2	2.53	0.43
2:B:481:VAL:HG21	2:B:497:MET:HG3	2.00	0.43
3:H:11:LEU:HD12	3:H:11:LEU:HA	1.90	0.43
3:H:53:ASN:O	3:H:74:ASN:ND2	2.52	0.43
3:H:97:ALA:HA	3:H:112:TRP:HA	1.99	0.43
2:B:86:CYS:HB2	2:B:321:CYS:HB3	1.61	0.43
2:B:404:ASP:OD1	2:B:404:ASP:N	2.50	0.43
2:D:431:ARG:HD2	2:D:431:ARG:HA	1.54	0.43
2:B:55:GLU:O	3:M:103:GLY:HA2	2.19	0.43
1:C:52:ARG:HA	1:C:52:ARG:HD3	1.78	0.43
1:C:124:ARG:HE	1:C:124:ARG:HB3	1.60	0.43
2:D:267:ASP:OD1	2:D:267:ASP:N	2.52	0.43
1:A:236:GLU:HB3	1:A:413:TYR:HE1	1.82	0.43
1:A:228:LEU:HD23	1:A:228:LEU:HA	1.84	0.43
2:B:493:THR:OG1	2:B:494:TRP:N	2.52	0.43
1:C:33:LEU:HD12	1:C:39:GLU:OE2	2.19	0.43
1:C:350:LYS:HD3	1:C:350:LYS:C	2.39	0.43
1:C:809:LEU:HD12	1:C:809:LEU:HA	1.92	0.43
1:A:28:ASN:C	1:A:61:GLN:O	2.58	0.43
1:A:351:TYR:HE2	1:A:361:PHE:HE2	1.67	0.43
1:A:763:GLN:HB2	1:A:817:GLN:NE2	2.34	0.43
2:B:190:ILE:HD12	2:B:190:ILE:HA	1.86	0.43
1:C:140:THR:O	1:C:367:ARG:NE	2.46	0.43
1:C:168:SER:CA	1:C:218:PHE:CE2	3.02	0.43
1:C:829:LEU:HD13	1:C:831:CYS:SG	2.58	0.43
1:C:46:VAL:HG13	1:C:60:LEU:CB	2.47	0.42
1:C:88:TYR:CD1	1:C:89:ALA:C	2.92	0.42
2:D:67:ARG:NH1	4:L:32:TYR:OH	2.50	0.42
2:D:88:LEU:HD23	2:D:94:ILE:HG13	2.00	0.42
2:D:158:LEU:O	2:D:162:GLU:CB	2.65	0.42
2:D:493:THR:OG1	2:D:494:TRP:N	2.52	0.42
3:H:33:THR:OG1	3:H:51:ILE:O	2.35	0.42
2:D:362:LEU:HD23	2:D:379:TRP:CG	2.54	0.42

Continued on next page...

Continued from previous page...

Atom-1	Atom-2	Interatomic distance (Å)	Clash overlap (Å)
4:L:38:HIS:HB3	4:L:44:PRO:HA	2.01	0.42
1:A:159:ASN:O	1:A:411:ARG:NH1	2.52	0.42
1:A:411:ARG:NE	1:A:411:ARG:CA	2.82	0.42
1:A:556:TYR:HB3	2:D:531:GLU:HG2	2.00	0.42
1:A:809:LEU:HD12	1:A:809:LEU:HA	1.93	0.42
2:B:362:LEU:HD23	2:B:379:TRP:CG	2.55	0.42
2:B:483:ASN:HD21	2:B:496:GLY:H	1.67	0.42
2:B:715:ASP:HA	2:B:718:LEU:HD12	2.02	0.42
1:C:269:LEU:HD23	1:C:274:GLU:HG2	2.01	0.42
2:D:151:GLU:HG2	2:D:185:LYS:HG2	2.01	0.42
2:D:408:ILE:HG12	2:D:508:MET:HB2	2.01	0.42
1:A:266:TYR:HA	1:A:402:TRP:HZ2	1.83	0.42
1:C:137:PHE:CD1	1:C:137:PHE:N	2.73	0.42
4:L:46:LEU:HD21	4:L:49:HIS:CE1	2.54	0.42
4:N:38:HIS:HB3	4:N:44:PRO:HA	2.01	0.42
2:B:361:LYS:HA	2:B:361:LYS:HD3	1.88	0.42
2:B:407:SER:HA	2:B:477:ASP:HB2	2.00	0.42
2:B:601:THR:O	2:B:601:THR:HG22	2.20	0.42
1:C:222:THR:O	1:C:222:THR:OG1	2.38	0.42
1:C:266:TYR:HA	1:C:402:TRP:HZ2	1.83	0.42
1:C:651:ARG:O	1:C:655:MET:HG2	2.20	0.42
2:D:481:VAL:HG21	2:D:497:MET:HG3	2.00	0.42
3:H:3:LYS:HD3	3:H:3:LYS:HA	1.87	0.42
1:C:79:CYS:HA	1:C:82:LEU:HB2	2.02	0.42
1:C:168:SER:HB3	1:C:218:PHE:O	2.19	0.42
1:C:330:VAL:CG1	2:D:79:LYS:HZ1	2.22	0.42
1:A:651:ARG:O	1:A:655:MET:HG2	2.20	0.42
1:C:224:ASN:ND2	1:C:224:ASN:O	2.53	0.42
1:C:330:VAL:HG13	2:D:79:LYS:HB3	2.00	0.42
2:D:350:SER:OG	2:D:358:MET:SD	2.66	0.42
1:A:438:ASP:OD1	1:A:438:ASP:N	2.45	0.42
1:C:108:SER:O	1:C:134:HIS:ND1	2.53	0.42
4:L:47:LEU:HB3	4:L:48:ILE:HG12	2.02	0.42
1:A:108:SER:OG	1:A:134:HIS:NE2	2.40	0.42
1:A:238:ARG:NH1	1:A:411:ARG:O	2.53	0.42
2:B:119:THR:HA	2:B:318:LYS:HZ1	1.85	0.42
1:C:267:VAL:HG12	1:C:269:LEU:HD11	2.02	0.42
1:A:180:LEU:HD12	1:A:180:LEU:HA	1.89	0.42
1:A:236:GLU:HB3	1:A:413:TYR:CE1	2.55	0.42
2:B:285:TRP:HB3	2:B:289:LEU:HD11	2.02	0.42
1:C:141:VAL:O	1:C:141:VAL:HG23	2.19	0.42

Continued on next page...

Continued from previous page...

Atom-1	Atom-2	Interatomic distance (Å)	Clash overlap (Å)
1:C:162:HIS:CE1	1:C:237:ALA:HA	2.55	0.42
4:N:47:LEU:HB3	4:N:48:ILE:HG12	2.02	0.42
1:A:82:LEU:HA	1:A:85:SER:HB3	2.02	0.41
1:A:382:LEU:HD12	1:A:382:LEU:HA	1.94	0.41
2:B:421:SER:OG	2:B:422:VAL:N	2.53	0.41
2:B:662:GLN:O	2:B:670:LYS:HE2	2.20	0.41
2:D:421:SER:OG	2:D:422:VAL:N	2.53	0.41
2:D:602:ILE:O	2:D:602:ILE:HG13	2.18	0.41
4:N:46:LEU:HD21	4:N:49:HIS:CE1	2.54	0.41
1:A:33:LEU:N	1:A:65:VAL:CG1	2.84	0.41
1:A:65:VAL:CG1	1:A:66:THR:N	2.82	0.41
2:D:50:ILE:HD12	2:D:293:VAL:HG21	2.03	0.41
2:D:225:SER:HA	2:D:226:PRO:HA	1.80	0.41
2:D:269:VAL:O	2:D:371:ARG:NE	2.44	0.41
1:A:269:LEU:HD23	1:A:274:GLU:HG2	2.02	0.41
1:C:165:LEU:HB3	1:C:215:VAL:HG12	2.03	0.41
2:D:715:ASP:HA	2:D:718:LEU:HD12	2.02	0.41
3:H:96:CYS:O	3:H:113:GLY:N	2.52	0.41
3:M:85:SER:O	3:M:85:SER:OG	2.32	0.41
3:M:112:TRP:CH2	4:N:43:GLY:HA3	2.55	0.41
1:A:79:CYS:HA	1:A:82:LEU:HB2	2.02	0.41
1:A:222:THR:O	1:A:222:THR:OG1	2.36	0.41
1:A:267:VAL:HG12	1:A:269:LEU:HD11	2.02	0.41
1:A:277:GLY:C	1:A:279:ALA:N	2.74	0.41
1:A:330:VAL:HG11	2:B:79:LYS:NZ	2.35	0.41
1:A:636:LEU:O	2:D:636:ALA:HB1	2.21	0.41
2:B:50:ILE:HD12	2:B:293:VAL:HG21	2.03	0.41
2:B:78:PRO:O	2:B:82:ILE:HG12	2.21	0.41
2:D:119:THR:HA	2:D:318:LYS:HZ1	1.85	0.41
1:A:460:PRO:HD3	1:A:499:LEU:HD12	2.02	0.41
2:B:408:ILE:HG12	2:B:508:MET:HB2	2.01	0.41
2:B:432:ASN:ND2	2:B:456:CYS:SG	2.94	0.41
2:B:531:GLU:HG2	1:C:556:TYR:HB3	2.02	0.41
2:B:673:ARG:HA	2:B:674:PRO:HD3	1.90	0.41
2:D:483:ASN:HD21	2:D:496:GLY:H	1.67	0.41
3:H:50:TYR:CE1	4:L:95:TYR:HB2	2.53	0.41
2:B:318:LYS:HD3	2:B:320:SER:O	2.21	0.41
1:A:162:HIS:CE1	1:A:237:ALA:HA	2.55	0.41
2:B:67:ARG:HG3	3:M:107:TRP:CZ2	2.56	0.41
2:B:267:ASP:N	2:B:267:ASP:OD1	2.52	0.41
2:B:741:GLY:HA3	2:B:802:HIS:HE1	1.86	0.41

Continued on next page...

Continued from previous page...

Atom-1	Atom-2	Interatomic distance (Å)	Clash overlap (Å)
1:C:142:PRO:HA	1:C:143:PRO:HD3	1.91	0.41
2:D:369:LYS:HB2	2:D:369:LYS:HE3	1.70	0.41
1:A:29:ILE:H	1:A:62:ALA:HA	1.84	0.41
1:A:485:ILE:HD13	1:A:485:ILE:HA	1.95	0.41
2:B:550:PHE:CZ	1:C:829:LEU:HG	2.56	0.41
1:C:562:LEU:HD11	1:C:767:LEU:HB2	2.02	0.41
3:H:81:LEU:HD23	3:H:83:MET:HE1	2.03	0.41
1:A:39:GLU:H	1:A:39:GLU:HG3	1.65	0.41
1:A:165:LEU:HB3	1:A:215:VAL:HG12	2.03	0.41
1:A:411:ARG:HA	1:A:411:ARG:HE	1.85	0.41
1:A:562:LEU:HD11	1:A:767:LEU:HB2	2.02	0.41
1:C:180:LEU:HD12	1:C:183:LEU:HD12	2.03	0.41
1:C:460:PRO:HD3	1:C:499:LEU:HD12	2.02	0.41
1:C:678:LEU:HD23	1:C:678:LEU:HA	1.90	0.41
2:D:39:VAL:HG11	2:D:70:LEU:HA	2.02	0.41
2:D:78:PRO:O	2:D:82:ILE:HG12	2.21	0.41
2:D:159:ASN:ND2	2:D:382:LYS:HE3	2.35	0.41
2:D:601:THR:HG22	2:D:601:THR:O	2.20	0.41
2:D:741:GLY:HA3	2:D:802:HIS:HE1	1.86	0.41
1:A:108:SER:CB	1:A:134:HIS:NE2	2.83	0.41
2:B:111:ILE:O	2:B:115:ILE:HG13	2.21	0.41
1:C:253:TYR:CE1	1:C:284:PRO:HD3	2.53	0.41
2:D:111:ILE:O	2:D:115:ILE:HG13	2.21	0.41
2:D:321:CYS:O	2:D:321:CYS:SG	2.79	0.41
2:B:552:GLU:HB3	2:B:553:PRO:HD3	2.03	0.40
2:D:265:ASP:OD1	2:D:265:ASP:N	2.49	0.40
2:D:285:TRP:HB3	2:D:289:LEU:HD11	2.02	0.40
2:B:127:HIS:CD2	2:B:287:TYR:HB3	2.57	0.40
2:B:225:SER:HA	2:B:226:PRO:HA	1.80	0.40
2:B:234:LYS:NZ	2:B:268:THR:O	2.46	0.40
2:B:321:CYS:O	2:B:321:CYS:SG	2.79	0.40
2:D:133:ILE:H	2:D:133:ILE:HD12	1.86	0.40
2:D:318:LYS:HD3	2:D:320:SER:O	2.21	0.40
2:D:366:LEU:CD1	2:D:375:ARG:HA	2.51	0.40
1:A:151:TRP:CE2	1:A:270:VAL:HG22	2.56	0.40
2:B:366:LEU:CD1	2:B:375:ARG:HA	2.51	0.40
2:D:160:ILE:HG21	2:D:365:ILE:CD1	2.52	0.40
2:B:432:ASN:HD22	2:B:456:CYS:CB	2.33	0.40
1:C:124:ARG:HH22	1:C:147:GLN:NE2	2.20	0.40
1:C:157:VAL:HG22	1:C:392:HIS:NE2	2.36	0.40
2:D:374:GLU:OE1	2:D:375:ARG:N	2.53	0.40

Continued on next page...

Continued from previous page...

Atom-1	Atom-2	Interatomic distance (Å)	Clash overlap (Å)
2:B:415:PRO:HG3	2:B:738:TYR:CE2	2.57	0.40
2:B:602:ILE:O	2:B:602:ILE:HG13	2.18	0.40
2:D:474:PHE:HD1	2:D:474:PHE:HA	1.77	0.40
3:H:112:TRP:CH2	4:L:43:GLY:HA3	2.57	0.40

There are no symmetry-related clashes.

5.3 Torsion angles [i](#)

5.3.1 Protein backbone [i](#)

In the following table, the Percentiles column shows the percent Ramachandran outliers of the chain as a percentile score with respect to all PDB entries followed by that with respect to all EM entries.

The Analysed column shows the number of residues for which the backbone conformation was analysed, and the total number of residues.

Mol	Chain	Analysed	Favoured	Allowed	Outliers	Percentiles	
1	A	773/862 (90%)	675 (87%)	80 (10%)	18 (2%)	6	37
1	C	774/862 (90%)	676 (87%)	83 (11%)	15 (2%)	8	41
2	B	774/883 (88%)	653 (84%)	108 (14%)	13 (2%)	9	44
2	D	774/883 (88%)	651 (84%)	111 (14%)	12 (2%)	9	45
3	H	113/223 (51%)	107 (95%)	6 (5%)	0	100	100
3	M	112/223 (50%)	109 (97%)	3 (3%)	0	100	100
4	L	104/213 (49%)	92 (88%)	11 (11%)	1 (1%)	15	54
4	N	104/213 (49%)	92 (88%)	11 (11%)	1 (1%)	15	54
All	All	3528/4362 (81%)	3055 (87%)	413 (12%)	60 (2%)	13	44

All (60) Ramachandran outliers are listed below:

Mol	Chain	Res	Type
1	A	138	LEU
1	A	411	ARG
1	A	467	SER
1	A	821	SER
1	A	822	ARG
2	B	132	MET

Continued on next page...

Continued from previous page...

Mol	Chain	Res	Type
2	B	133	ILE
2	B	223	LEU
2	B	415	PRO
1	C	381	LYS
1	C	467	SER
2	D	132	MET
2	D	133	ILE
2	D	223	LEU
2	D	414	ALA
1	A	87	VAL
1	A	368	LYS
1	A	404	GLY
1	A	641	GLY
1	A	830	THR
1	C	87	VAL
1	C	368	LYS
1	C	404	GLY
1	C	436	MET
1	C	830	THR
1	A	172	GLU
1	A	278	ASN
1	C	172	GLU
1	C	331	GLY
1	A	34	SER
1	A	331	GLY
1	A	465	PRO
2	B	193	SER
2	B	287	TYR
1	C	380	ARG
2	D	193	SER
2	D	287	TYR
1	A	113	PHE
2	B	145	GLN
2	B	312	SER
2	B	416	PHE
1	C	113	PHE
1	C	219	ASP
2	D	145	GLN
2	D	312	SER
1	A	466	GLY
2	B	165	ASP
2	D	165	ASP

Continued on next page...

Continued from previous page...

Mol	Chain	Res	Type
1	A	322	ILE
1	C	322	ILE
1	C	65	VAL
2	B	603	GLY
1	C	466	GLY
2	D	603	GLY
2	B	39	VAL
2	B	679	PRO
2	D	39	VAL
2	D	679	PRO
4	L	8	PRO
4	N	8	PRO

5.3.2 Protein sidechains [i](#)

In the following table, the Percentiles column shows the percent sidechain outliers of the chain as a percentile score with respect to all PDB entries followed by that with respect to all EM entries.

The Analysed column shows the number of residues for which the sidechain conformation was analysed, and the total number of residues.

Mol	Chain	Analysed	Rotameric	Outliers	Percentiles	
1	A	673/744 (90%)	641 (95%)	32 (5%)	25	53
1	C	674/744 (91%)	639 (95%)	35 (5%)	23	50
2	B	681/762 (89%)	657 (96%)	24 (4%)	36	60
2	D	681/762 (89%)	658 (97%)	23 (3%)	37	61
3	H	96/189 (51%)	96 (100%)	0	100	100
3	M	95/189 (50%)	95 (100%)	0	100	100
4	L	91/189 (48%)	81 (89%)	10 (11%)	6	25
4	N	91/189 (48%)	81 (89%)	10 (11%)	6	25
All	All	3082/3768 (82%)	2948 (96%)	134 (4%)	33	55

All (134) residues with a non-rotameric sidechain are listed below:

Mol	Chain	Res	Type
1	A	64	SER
1	A	68	LYS
1	A	70	ASN

Continued on next page...

Continued from previous page...

Mol	Chain	Res	Type
1	A	88	TYR
1	A	93	SER
1	A	109	TYR
1	A	118	VAL
1	A	121	LEU
1	A	131	LYS
1	A	135	LEU
1	A	136	SER
1	A	172	GLU
1	A	223	LYS
1	A	235	LEU
1	A	238	ARG
1	A	269	LEU
1	A	273	ARG
1	A	285	ASP
1	A	329	CYS
1	A	330	VAL
1	A	411	ARG
1	A	463	THR
1	A	511	VAL
1	A	589	LEU
1	A	640	ILE
1	A	647	SER
1	A	667	SER
1	A	684	ARG
1	A	725	ARG
1	A	767	LEU
1	A	828	THR
1	A	834	MET
2	B	40	ILE
2	B	108	ILE
2	B	197	TRP
2	B	208	SER
2	B	230	LEU
2	B	261	LEU
2	B	279	SER
2	B	286	ASP
2	B	322	TYR
2	B	325	HIS
2	B	326	GLU
2	B	364	ILE
2	B	381	ASP

Continued on next page...

Continued from previous page...

Mol	Chain	Res	Type
2	B	382	LYS
2	B	416	PHE
2	B	431	ARG
2	B	432	ASN
2	B	434	VAL
2	B	445	LYS
2	B	510	VAL
2	B	539	SER
2	B	602	ILE
2	B	660	VAL
2	B	807	GLU
1	C	28	ASN
1	C	33	LEU
1	C	61	GLN
1	C	63	THR
1	C	68	LYS
1	C	70	ASN
1	C	88	TYR
1	C	93	SER
1	C	109	TYR
1	C	118	VAL
1	C	121	LEU
1	C	134	HIS
1	C	137	PHE
1	C	172	GLU
1	C	222	THR
1	C	223	LYS
1	C	235	LEU
1	C	238	ARG
1	C	269	LEU
1	C	273	ARG
1	C	285	ASP
1	C	329	CYS
1	C	330	VAL
1	C	411	ARG
1	C	463	THR
1	C	515	ASN
1	C	589	LEU
1	C	642	GLU
1	C	647	SER
1	C	667	SER
1	C	684	ARG

Continued on next page...

Continued from previous page...

Mol	Chain	Res	Type
1	C	725	ARG
1	C	767	LEU
1	C	828	THR
1	C	834	MET
2	D	40	ILE
2	D	108	ILE
2	D	197	TRP
2	D	208	SER
2	D	230	LEU
2	D	261	LEU
2	D	279	SER
2	D	286	ASP
2	D	326	GLU
2	D	364	ILE
2	D	381	ASP
2	D	382	LYS
2	D	383	SER
2	D	386	MET
2	D	413	GLU
2	D	431	ARG
2	D	432	ASN
2	D	434	VAL
2	D	445	LYS
2	D	458	LYS
2	D	539	SER
2	D	602	ILE
2	D	807	GLU
4	L	5	THR
4	L	10	SER
4	L	22	THR
4	L	26	SER
4	L	65	SER
4	L	67	SER
4	L	72	SER
4	L	83	ILE
4	L	91	TYR
4	L	105	ILE
4	N	5	THR
4	N	10	SER
4	N	22	THR
4	N	26	SER
4	N	65	SER

Continued on next page...

Continued from previous page...

Mol	Chain	Res	Type
4	N	67	SER
4	N	72	SER
4	N	83	ILE
4	N	91	TYR
4	N	105	ILE

Sometimes sidechains can be flipped to improve hydrogen bonding and reduce clashes. All (24) such sidechains are listed below:

Mol	Chain	Res	Type
1	A	28	ASN
1	A	73	GLN
1	A	146	HIS
1	A	147	GLN
1	A	726	HIS
2	B	432	ASN
2	B	486	HIS
2	B	656	GLN
2	B	711	GLN
2	B	812	GLN
1	C	73	GLN
1	C	134	HIS
1	C	146	HIS
1	C	147	GLN
1	C	224	ASN
2	D	432	ASN
2	D	486	HIS
2	D	656	GLN
2	D	711	GLN
2	D	812	GLN
3	H	84	ASN
4	L	38	HIS
3	M	84	ASN
4	N	38	HIS

5.3.3 RNA

There are no RNA molecules in this entry.

5.4 Non-standard residues in protein, DNA, RNA chains [i](#)

There are no non-standard protein/DNA/RNA residues in this entry.

5.5 Carbohydrates [i](#)

There are no monosaccharides in this entry.

5.6 Ligand geometry [i](#)

There are no ligands in this entry.

5.7 Other polymers [i](#)

There are no such residues in this entry.

5.8 Polymer linkage issues [i](#)

The following chains have linkage breaks:

Mol	Chain	Number of breaks
2	B	2
2	D	2

All chain breaks are listed below:

Model	Chain	Residue-1	Atom-1	Residue-2	Atom-2	Distance (Å)
1	B	44:THR	C	45:SER	N	5.22
1	D	44:THR	C	45:SER	N	5.22
1	B	63:SER	C	64:VAL	N	3.24
1	D	63:SER	C	64:VAL	N	3.24

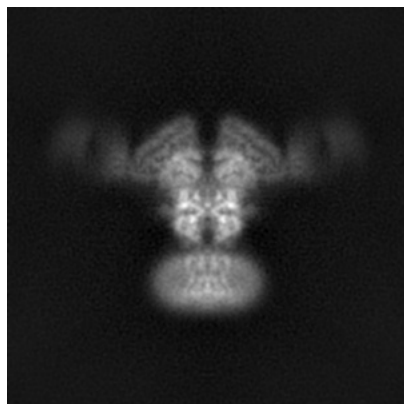
6 Map visualisation [i](#)

This section contains visualisations of the EMDB entry EMD-25844. These allow visual inspection of the internal detail of the map and identification of artifacts.

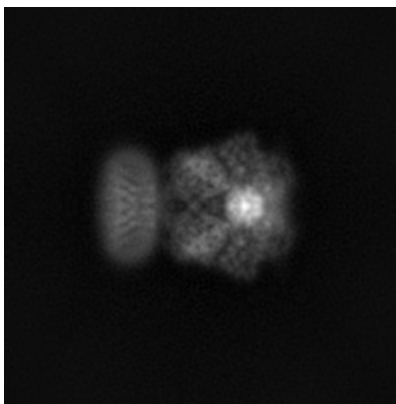
Images derived from a raw map, generated by summing the deposited half-maps, are presented below the corresponding image components of the primary map to allow further visual inspection and comparison with those of the primary map.

6.1 Orthogonal projections [i](#)

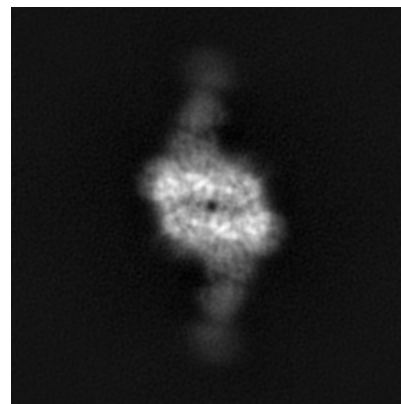
6.1.1 Primary map



X

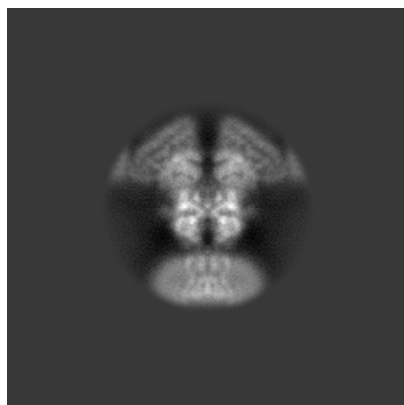


Y

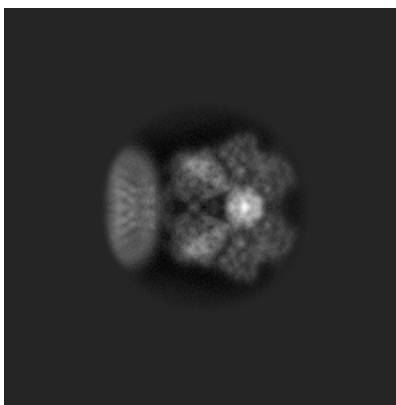


Z

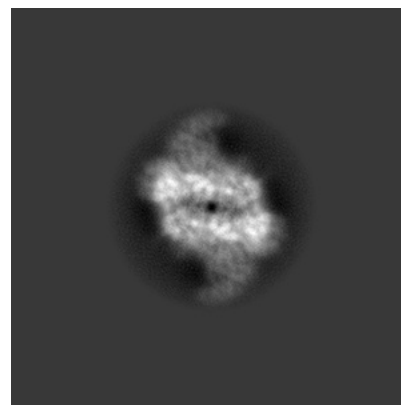
6.1.2 Raw map



X



Y

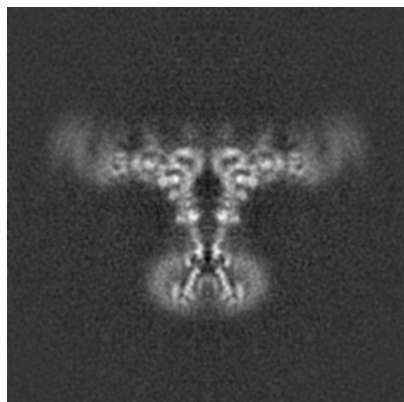


Z

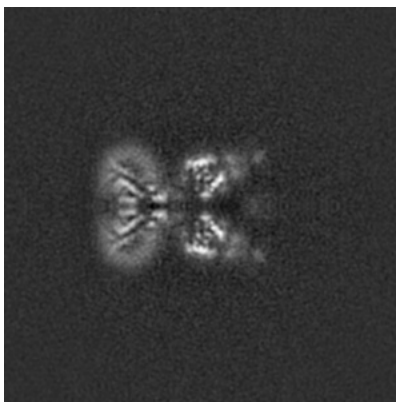
The images above show the map projected in three orthogonal directions.

6.2 Central slices [i](#)

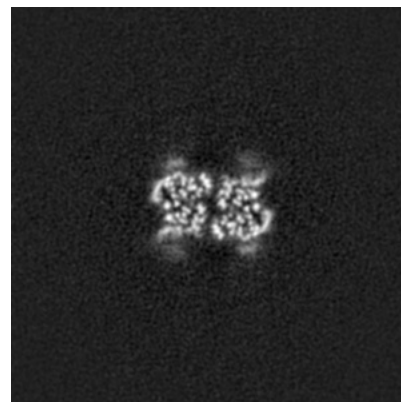
6.2.1 Primary map



X Index: 128

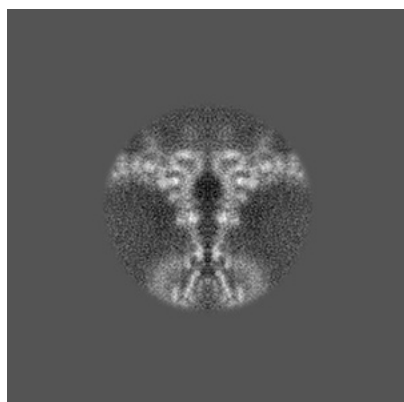


Y Index: 128

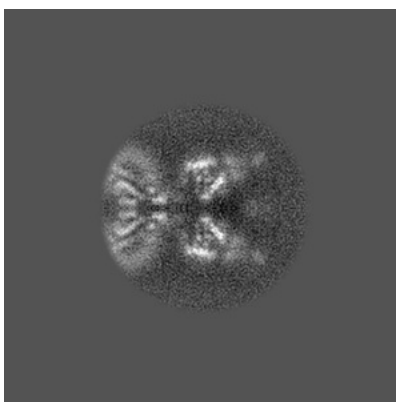


Z Index: 128

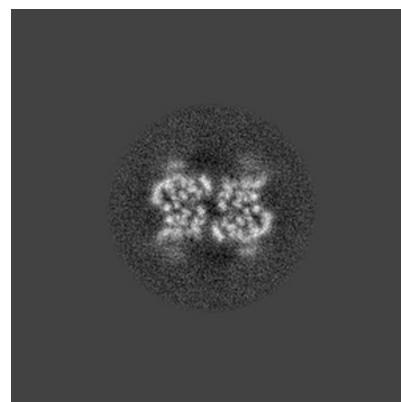
6.2.2 Raw map



X Index: 128



Y Index: 128

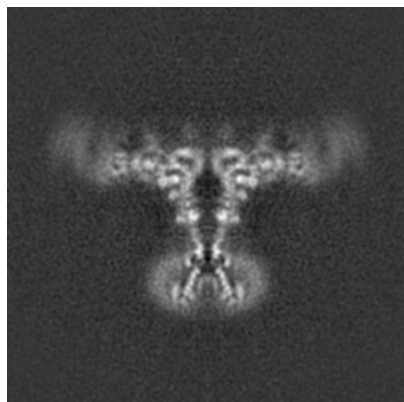


Z Index: 128

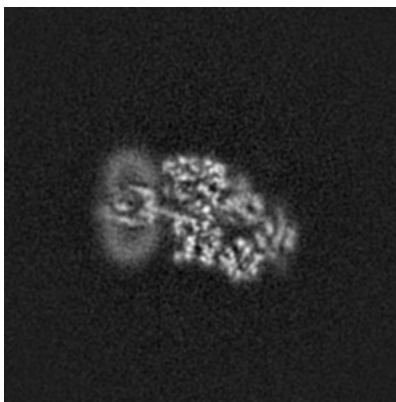
The images above show central slices of the map in three orthogonal directions.

6.3 Largest variance slices [i](#)

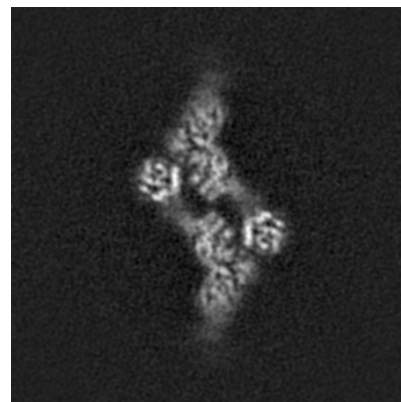
6.3.1 Primary map



X Index: 128

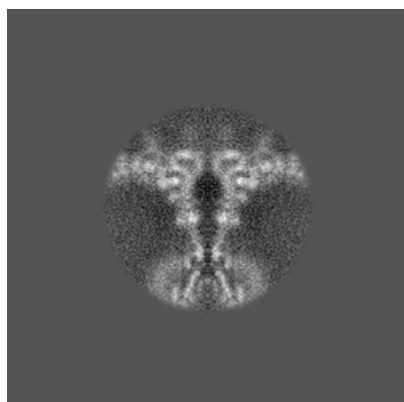


Y Index: 141

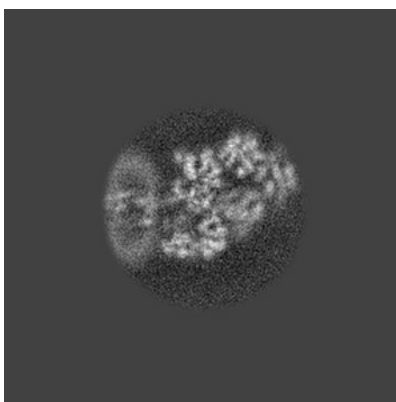


Z Index: 152

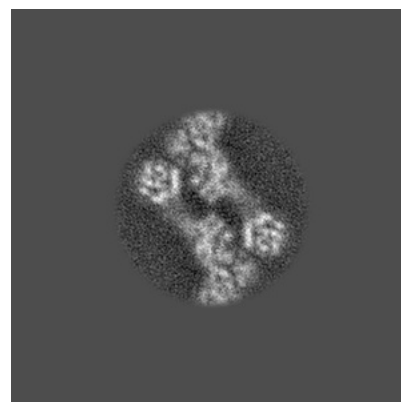
6.3.2 Raw map



X Index: 128



Y Index: 114

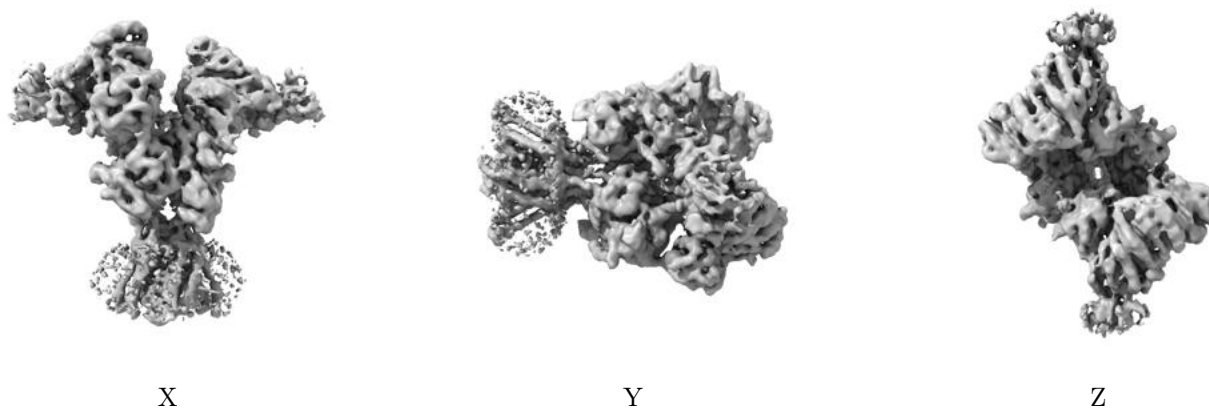


Z Index: 152

The images above show the largest variance slices of the map in three orthogonal directions.

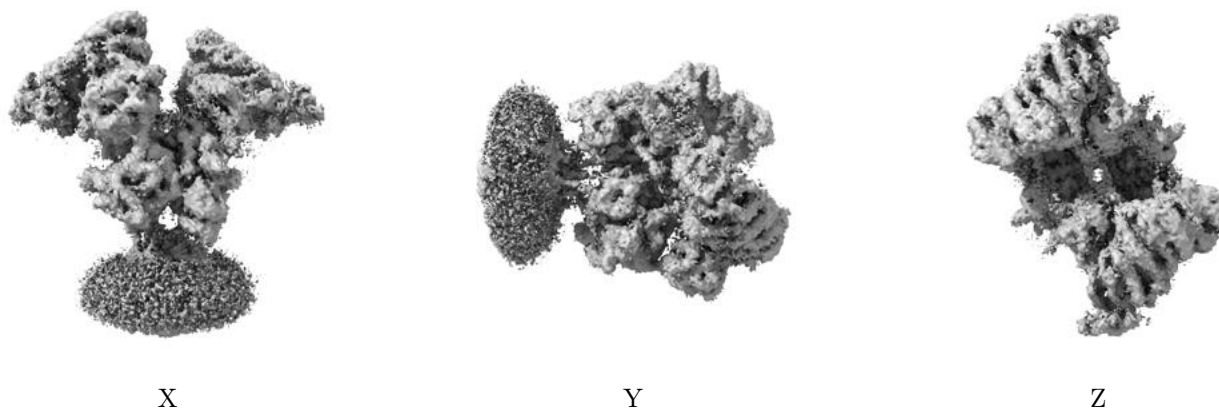
6.4 Orthogonal surface views [i](#)

6.4.1 Primary map



The images above show the 3D surface view of the map at the recommended contour level 3.0. These images, in conjunction with the slice images, may facilitate assessment of whether an appropriate contour level has been provided.

6.4.2 Raw map



These images show the 3D surface of the raw map. The raw map's contour level was selected so that its surface encloses the same volume as the primary map does at its recommended contour level.

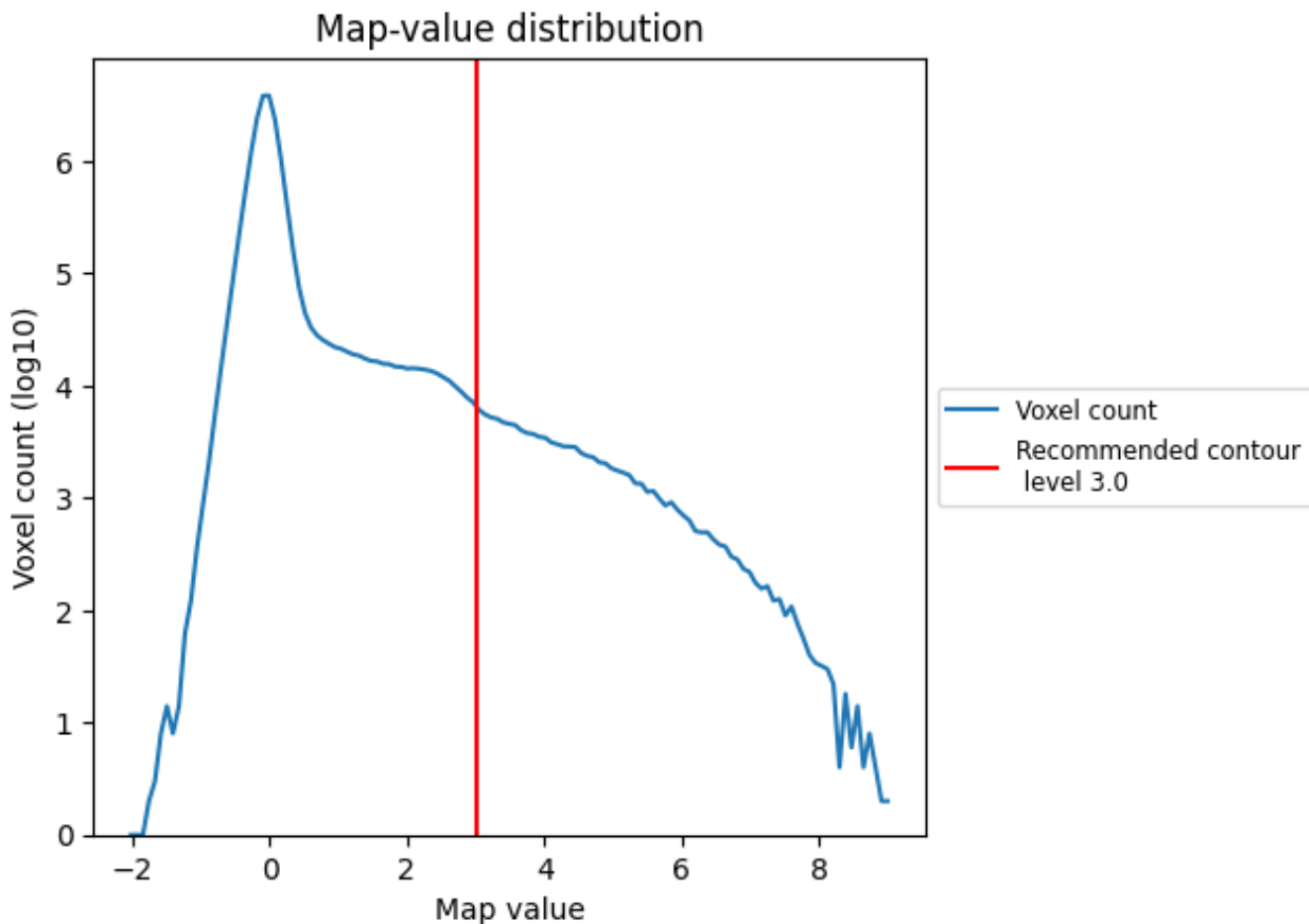
6.5 Mask visualisation [i](#)

This section was not generated. No masks/segmentation were deposited.

7 Map analysis [i](#)

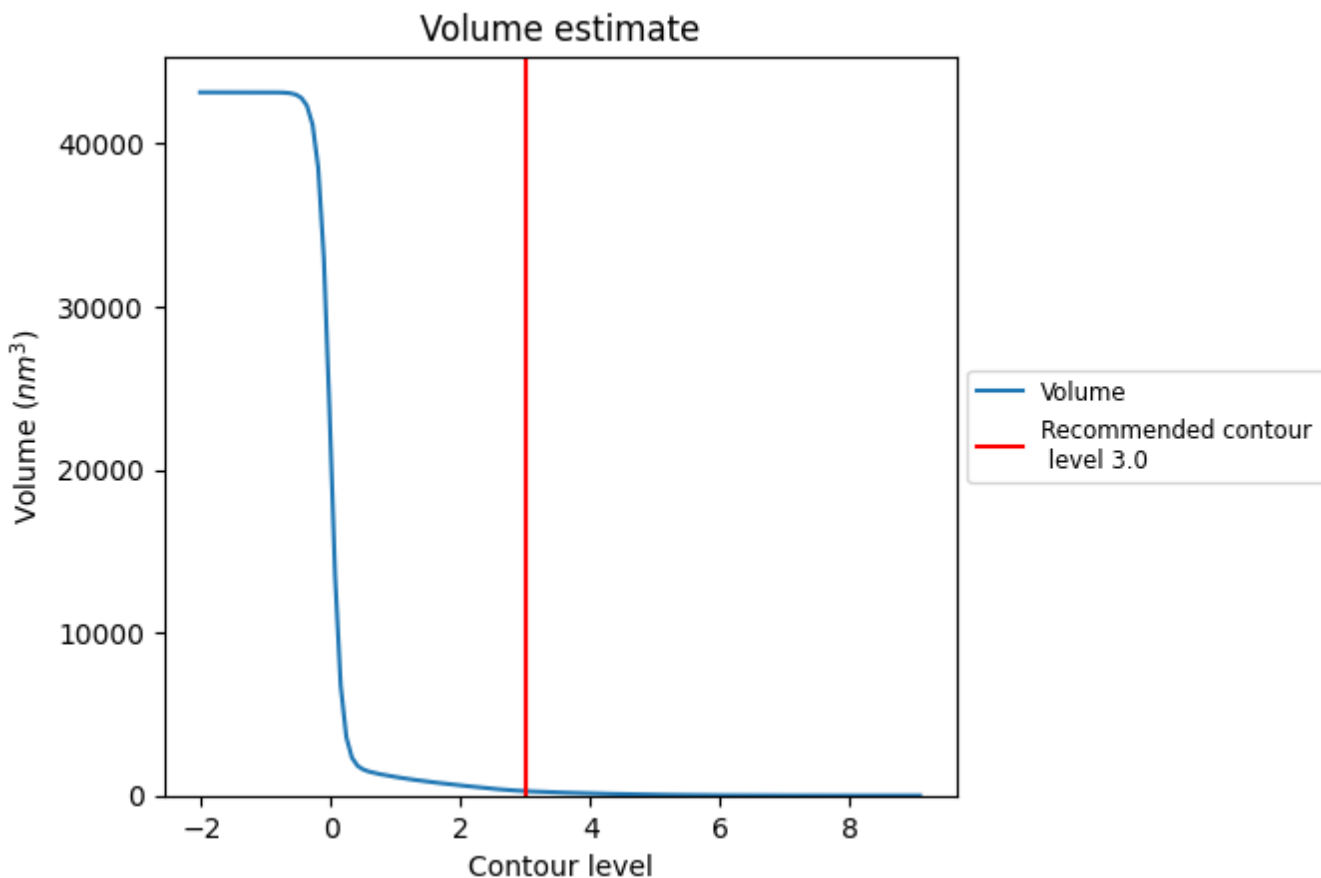
This section contains the results of statistical analysis of the map.

7.1 Map-value distribution [i](#)



The map-value distribution is plotted in 128 intervals along the x-axis. The y-axis is logarithmic. A spike in this graph at zero usually indicates that the volume has been masked.

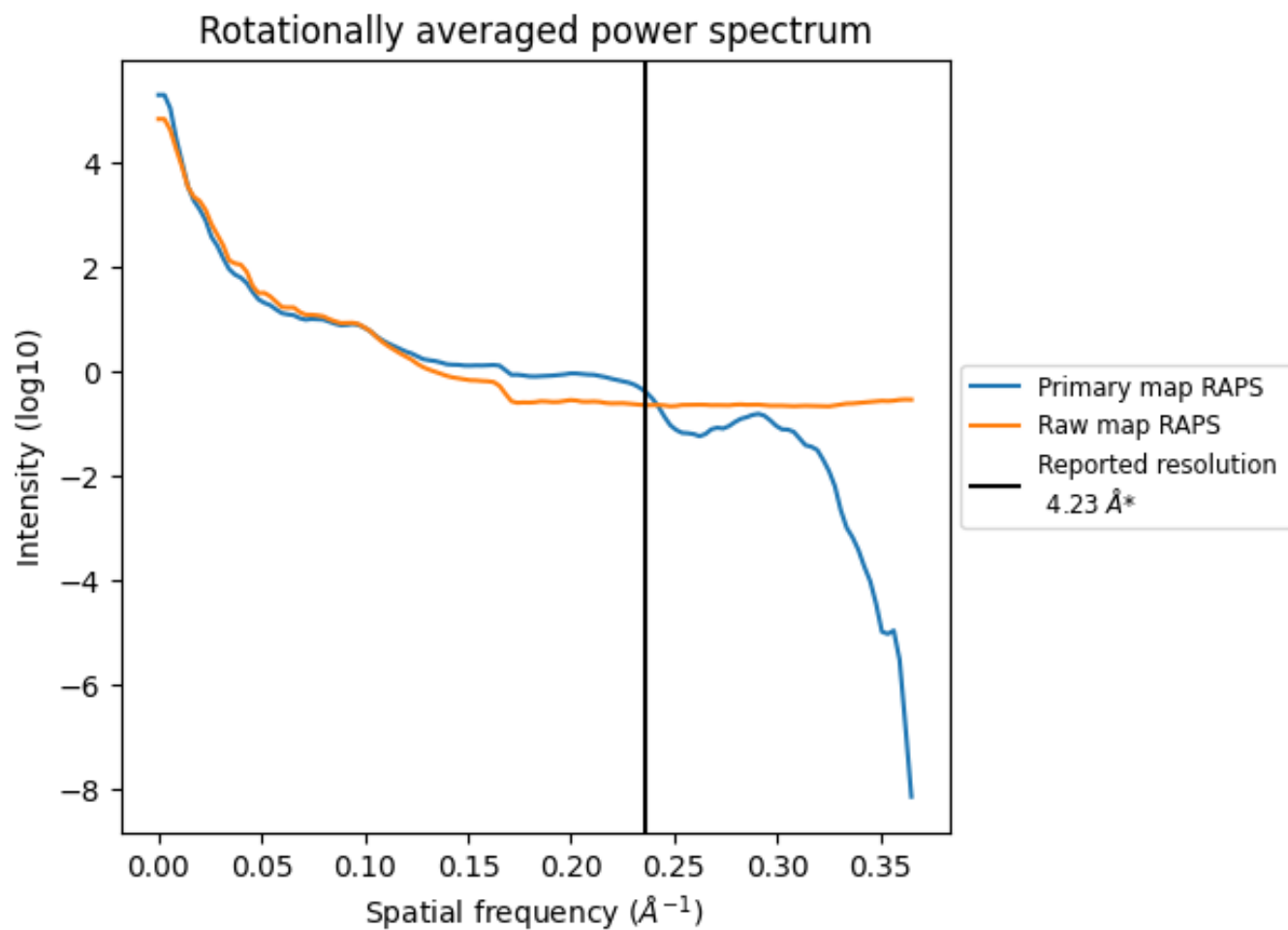
7.2 Volume estimate [i](#)



The volume at the recommended contour level is 272 nm³; this corresponds to an approximate mass of 246 kDa.

The volume estimate graph shows how the enclosed volume varies with the contour level. The recommended contour level is shown as a vertical line and the intersection between the line and the curve gives the volume of the enclosed surface at the given level.

7.3 Rotationally averaged power spectrum i

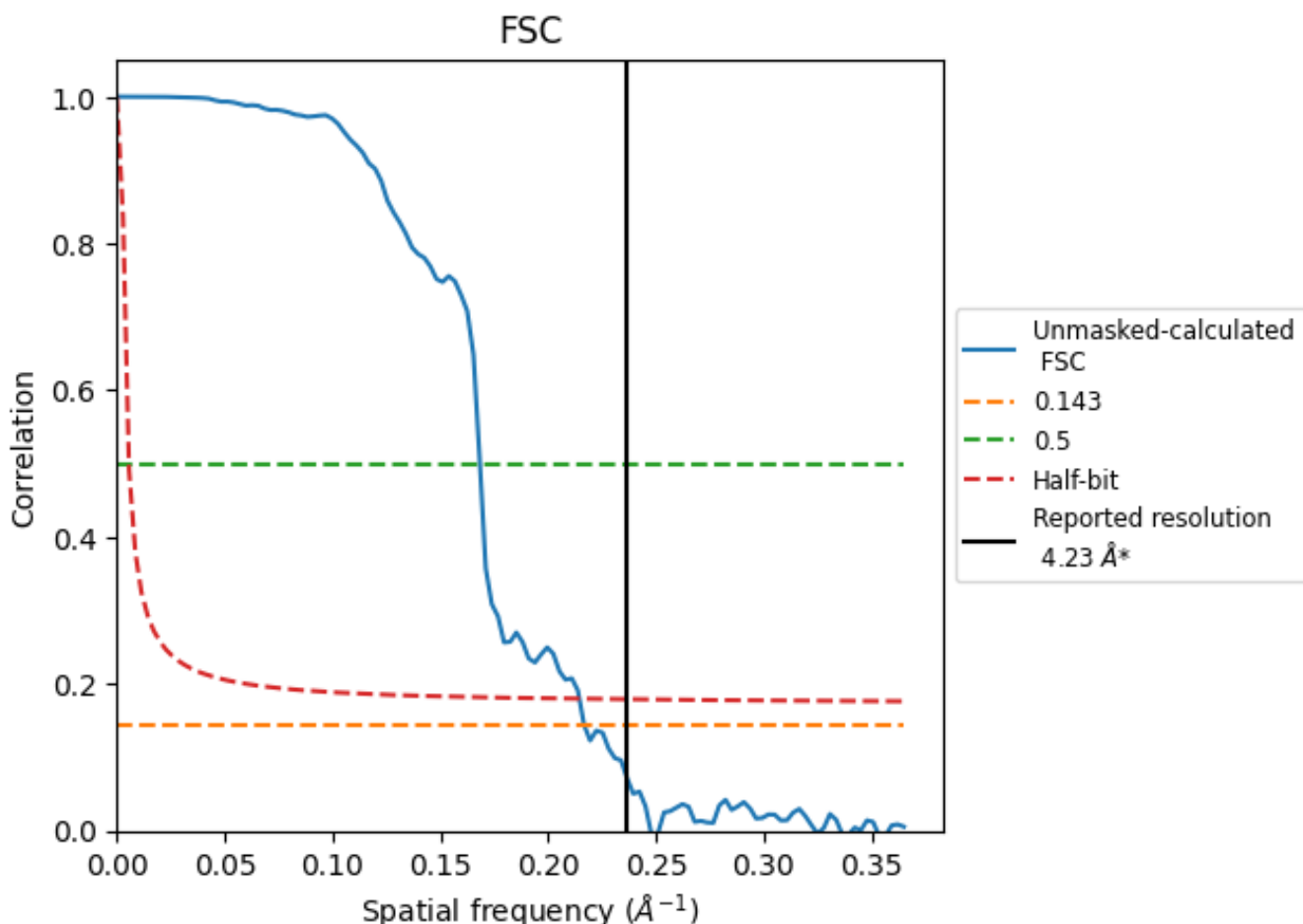


*Reported resolution corresponds to spatial frequency of 0.236 Å⁻¹

8 Fourier-Shell correlation [i](#)

Fourier-Shell Correlation (FSC) is the most commonly used method to estimate the resolution of single-particle and subtomogram-averaged maps. The shape of the curve depends on the imposed symmetry, mask and whether or not the two 3D reconstructions used were processed from a common reference. The reported resolution is shown as a black line. A curve is displayed for the half-bit criterion in addition to lines showing the 0.143 gold standard cut-off and 0.5 cut-off.

8.1 FSC [i](#)



*Reported resolution corresponds to spatial frequency of 0.236 Å⁻¹

8.2 Resolution estimates [i](#)

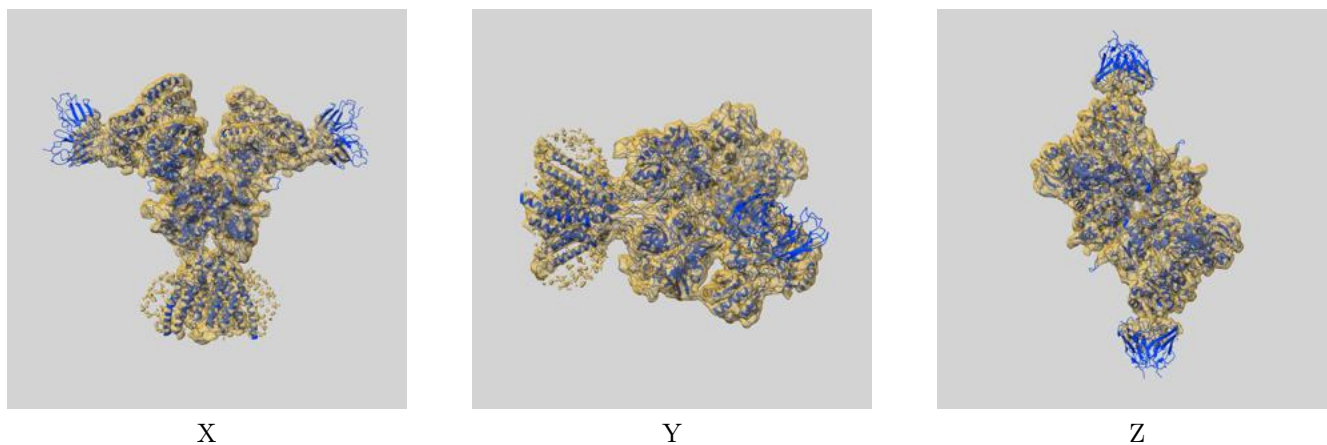
Resolution estimate (Å)	Estimation criterion (FSC cut-off)		
	0.143	0.5	Half-bit
Reported by author	4.23	-	-
Author-provided FSC curve	-	-	-
Unmasked-calculated*	4.61	5.94	4.66

*Resolution estimate based on FSC curve calculated by comparison of deposited half-maps.

9 Map-model fit [i](#)

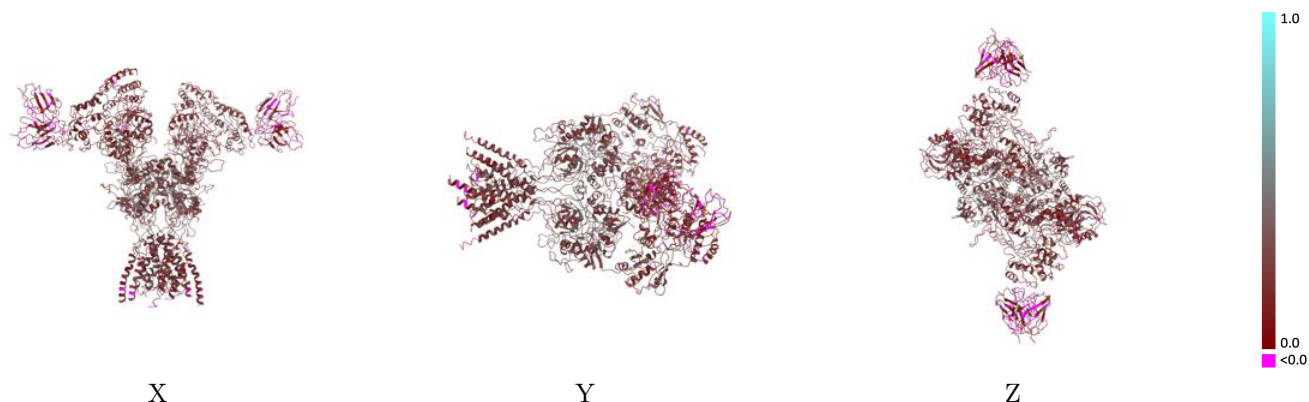
This section contains information regarding the fit between EMDB map EMD-25844 and PDB model 7TEB. Per-residue inclusion information can be found in section 3 on page 8.

9.1 Map-model overlay [i](#)



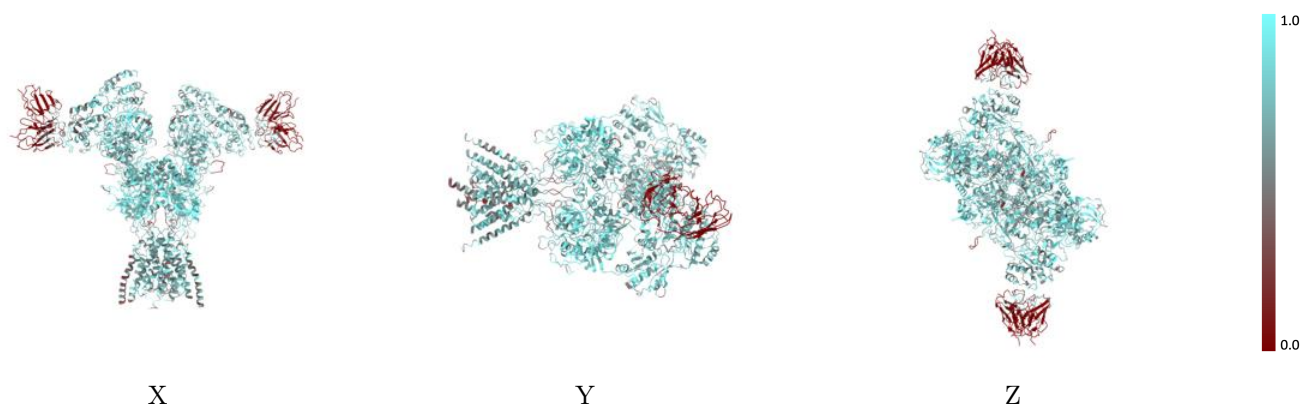
The images above show the 3D surface view of the map at the recommended contour level 3.0 at 50% transparency in yellow overlaid with a ribbon representation of the model coloured in blue. These images allow for the visual assessment of the quality of fit between the atomic model and the map.

9.2 Q-score mapped to coordinate model [\(i\)](#)



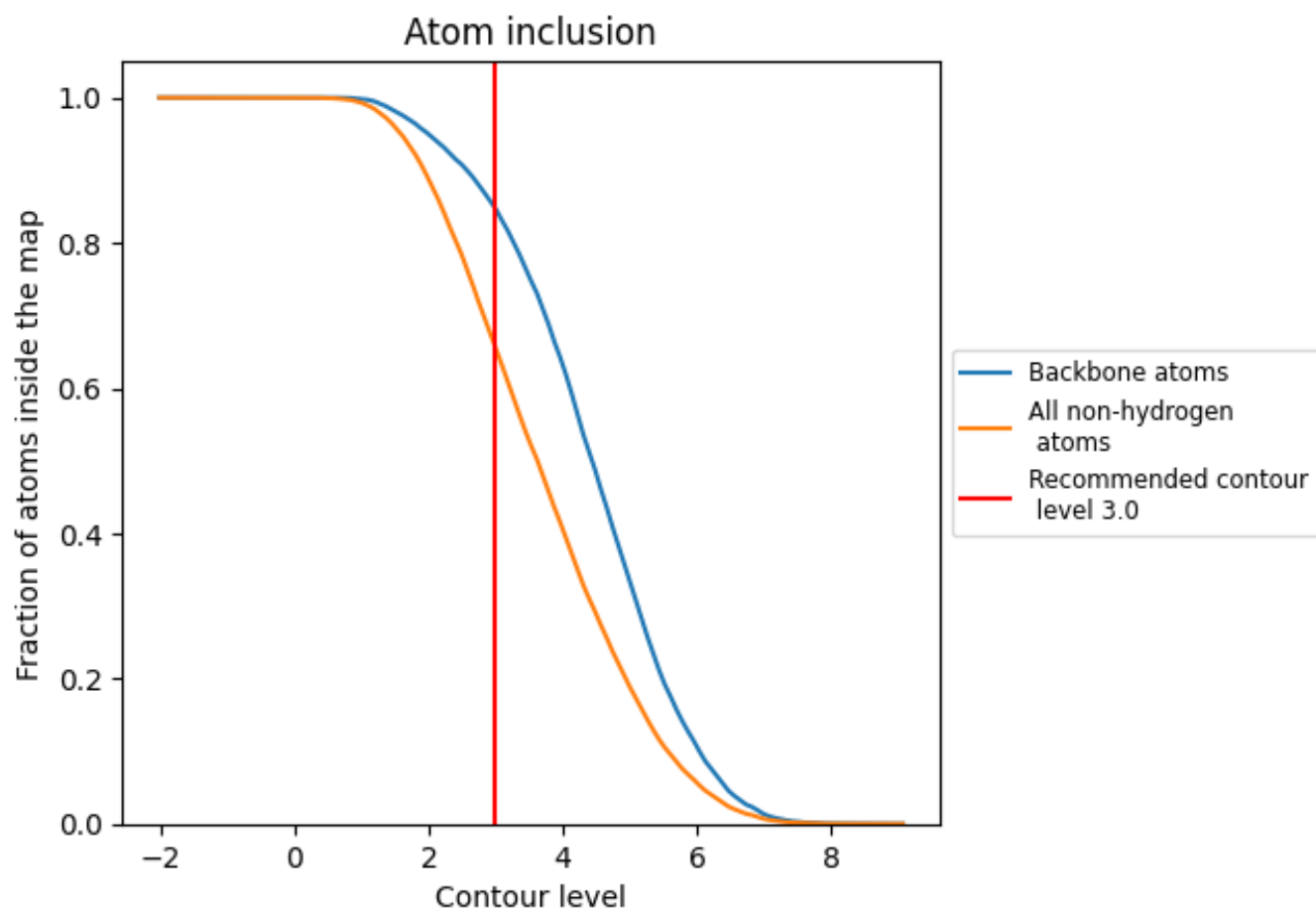
The images above show the model with each residue coloured according to its Q-score. This shows their resolvability in the map with higher Q-score values reflecting better resolvability. Please note: Q-score is calculating the resolvability of atoms, and thus high values are only expected at resolutions at which atoms can be resolved. Low Q-score values may therefore be expected for many entries.

9.3 Atom inclusion mapped to coordinate model [\(i\)](#)



The images above show the model with each residue coloured according to its atom inclusion. This shows to what extent they are inside the map at the recommended contour level (3.0).



















9.4 Atom inclusion [i](#)



At the recommended contour level, 85% of all backbone atoms, 66% of all non-hydrogen atoms, are inside the map.

9.5 Map-model fit summary

The table lists the average atom inclusion at the recommended contour level (3.0) and Q-score for the entire model and for each chain.

Chain	Atom inclusion	Q-score
All	 0.6554	 0.2330
A	 0.7418	 0.2600
B	 0.7119	 0.2450
C	 0.7406	 0.2620
D	 0.7060	 0.2450
H	 0.1716	 0.1040
L	 0.1267	 0.0860
M	 0.1911	 0.1130
N	 0.1180	 0.0620

