



# wwPDB X-ray Structure Validation Summary Report ⓘ

Nov 24, 2021 – 01:09 pm GMT

PDB ID : 6TH4  
Title : Tubulin-inhibitor complex  
Authors : Varela, P.F.; Gigant, B.  
Deposited on : 2019-11-18  
Resolution : 2.12 Å(reported)

This is a wwPDB X-ray Structure Validation Summary Report for a publicly released PDB entry.

We welcome your comments at [validation@mail.wwpdb.org](mailto:validation@mail.wwpdb.org)

A user guide is available at

<https://www.wwpdb.org/validation/2017/XrayValidationReportHelp>

with specific help available everywhere you see the ⓘ symbol.

---

The following versions of software and data (see [references ⓘ](#)) were used in the production of this report:

MolProbity : 4.02b-467  
Mogul : 1.8.4 (270009), CSD as541be (2020)  
Xtriage (Phenix) : 1.13  
EDS : 2.23.2  
buster-report : 1.1.7 (2018)  
Percentile statistics : 20191225.v01 (using entries in the PDB archive December 25th 2019)  
Refmac : 5.8.0267  
CCP4 : 7.1.010 (Gargrove)  
Ideal geometry (proteins) : Engh & Huber (2001)  
Ideal geometry (DNA, RNA) : Parkinson et al. (1996)  
Validation Pipeline (wwPDB-VP) : 2.23.2

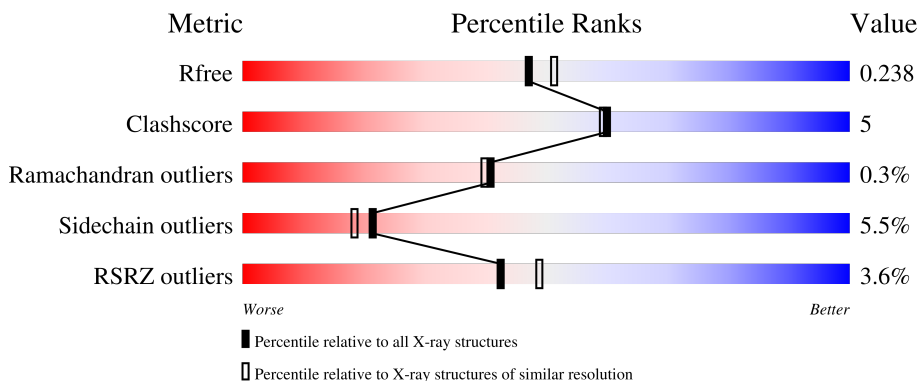
# 1 Overall quality at a glance

The following experimental techniques were used to determine the structure:

*X-RAY DIFFRACTION*

The reported resolution of this entry is 2.12 Å.

Percentile scores (ranging between 0-100) for global validation metrics of the entry are shown in the following graphic. The table shows the number of entries on which the scores are based.



Metric	Whole archive (#Entries)	Similar resolution (#Entries, resolution range(Å))
$R_{free}$	130704	6241 (2.14-2.10)
Clashscore	141614	6778 (2.14-2.10)
Ramachandran outliers	138981	6705 (2.14-2.10)
Sidechain outliers	138945	6706 (2.14-2.10)
RSRZ outliers	127900	6112 (2.14-2.10)

The table below summarises the geometric issues observed across the polymeric chains and their fit to the electron density. The red, orange, yellow and green segments of the lower bar indicate the fraction of residues that contain outliers for  $\geq 3$ , 2, 1 and 0 types of geometric quality criteria respectively. A grey segment represents the fraction of residues that are not modelled. The numeric value for each fraction is indicated below the corresponding segment, with a dot representing fractions  $\leq 5\%$ . The upper red bar (where present) indicates the fraction of residues that have poor fit to the electron density. The numeric value is given above the bar.

Mol	Chain	Length	Quality of chain
1	A	451	 5% 85% 9% • 5%
1	C	451	 2% 84% 11% • •
2	B	445	 4% 77% 17% • •
2	D	445	 2% 84% 12% • •
3	E	143	 8% 77% 10% • 10%

The following table lists non-polymeric compounds, carbohydrate monomers and non-standard residues in protein, DNA, RNA chains that are outliers for geometric or electron-density-fit criteria:

<b>Mol</b>	<b>Type</b>	<b>Chain</b>	<b>Res</b>	<b>Chirality</b>	<b>Geometry</b>	<b>Clashes</b>	<b>Electron density</b>
4	SO4	C	502	-	-	-	X

## 2 Entry composition i

There are 9 unique types of molecules in this entry. The entry contains 14923 atoms, of which 0 are hydrogens and 0 are deuteriums.

In the tables below, the ZeroOcc column contains the number of atoms modelled with zero occupancy, the AltConf column contains the number of residues with at least one atom in alternate conformation and the Trace column contains the number of residues modelled with at most 2 atoms.

- Molecule 1 is a protein called Tubulin alpha chain.

Mol	Chain	Residues	Atoms					ZeroOcc	AltConf	Trace
			Total	C	N	O	S			
1	A	428	Total	C	N	O	S	0	0	0
			3345	2118	566	639	22			
1	C	434	Total	C	N	O	S	0	0	0
			3390	2145	577	646	22			

- Molecule 2 is a protein called Tubulin beta chain.

Mol	Chain	Residues	Atoms					ZeroOcc	AltConf	Trace
			Total	C	N	O	S			
2	B	428	Total	C	N	O	S	0	7	0
			3411	2141	584	659	27			
2	D	429	Total	C	N	O	S	0	5	0
			3401	2132	581	661	27			

- Molecule 3 is a protein called Stathmin-4.

Mol	Chain	Residues	Atoms					ZeroOcc	AltConf	Trace
			Total	C	N	O	S			
3	E	128	Total	C	N	O	S	0	0	0
			1052	651	189	208	4			

There are 4 discrepancies between the modelled and reference sequences:

Chain	Residue	Modelled	Actual	Comment	Reference
E	3	ACE	-	acetylation	UNP P63043
E	4	ALA	SER	conflict	UNP P63043
E	14	ALA	CYS	engineered mutation	UNP P63043
E	20	TRP	PHE	engineered mutation	UNP P63043

- Molecule 4 is SULFATE ION (three-letter code: SO4) (formula: O<sub>4</sub>S).



Mol	Chain	Residues	Atoms	ZeroOcc	AltConf
4	A	1	Total O S 5 4 1	0	0
4	B	1	Total O S 5 4 1	0	0
4	B	1	Total O S 5 4 1	0	0
4	C	1	Total O S 5 4 1	0	0
4	C	1	Total O S 5 4 1	0	0
4	D	1	Total O S 5 4 1	0	0
4	D	1	Total O S 5 4 1	0	0

- Molecule 5 is GUANOSINE-5'-TRIPHOSPHATE (three-letter code: GTP) (formula:  $C_{10}H_{16}N_5O_{14}P_3$ ).



Mol	Chain	Residues	Atoms				ZeroOcc	AltConf	
5	A	1	Total	C	N	O	P	0	0
			32	10	5	14	3		
5	C	1	Total	C	N	O	P	0	0
			32	10	5	14	3		

- Molecule 6 is MAGNESIUM ION (three-letter code: MG) (formula: Mg).

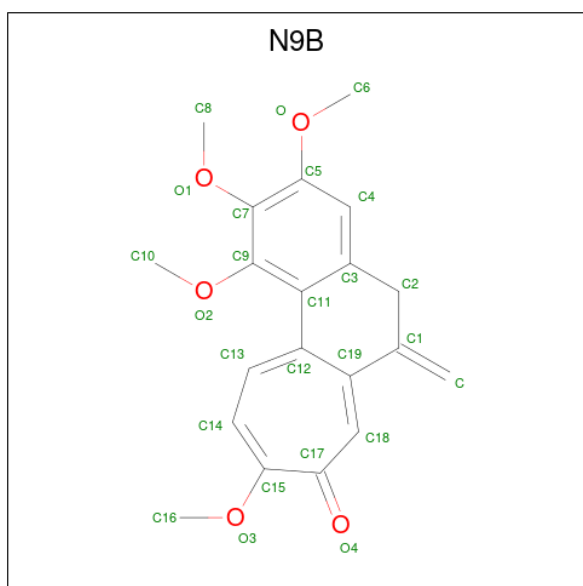
Mol	Chain	Residues	Atoms		ZeroOcc	AltConf
6	A	1	Total	Mg	0	0
			1	1		
6	D	1	Total	Mg	0	0
			1	1		

- Molecule 7 is GUANOSINE-5'-DIPHOSPHATE (three-letter code: GDP) (formula: C<sub>10</sub>H<sub>15</sub>N<sub>5</sub>O<sub>11</sub>P<sub>2</sub>).



Mol	Chain	Residues	Atoms				ZeroOcc	AltConf	
			Total	C	N	O			P
7	B	1	28	10	5	11	2	0	0
7	D	1	28	10	5	11	2	0	0

- Molecule 8 is 1,2,3,9-tetramethoxy-6-methylidene-5 {H}-cyclohepta[a]naphthalen-8-one (three-letter code: N9B) (formula: C<sub>20</sub>H<sub>20</sub>O<sub>5</sub>) (labeled as "Ligand of Interest" by depositor).



Mol	Chain	Residues	Atoms		ZeroOcc	AltConf	
			Total	C			O
8	B	1	25	20	5	0	1

*Continued on next page...*

*Continued from previous page...*

Mol	Chain	Residues	Atoms			ZeroOcc	AltConf
8	D	1	Total	C	O	0	0
			25	20	5		

- Molecule 9 is water.

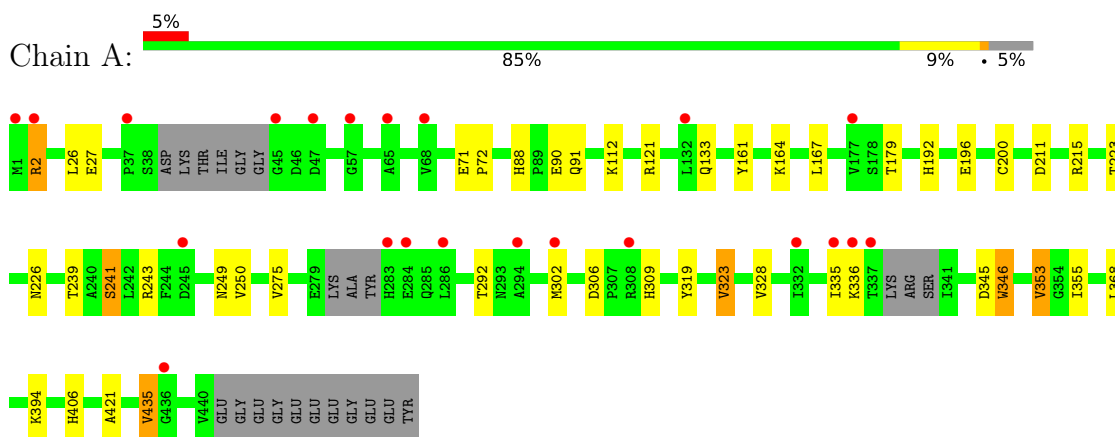
Mol	Chain	Residues	Atoms		ZeroOcc	AltConf
9	A	17	Total	O	0	0
			17	17		
9	B	19	Total	O	0	0
			19	19		
9	C	49	Total	O	0	0
			49	49		
9	D	29	Total	O	0	0
			29	29		
9	E	3	Total	O	0	0
			3	3		



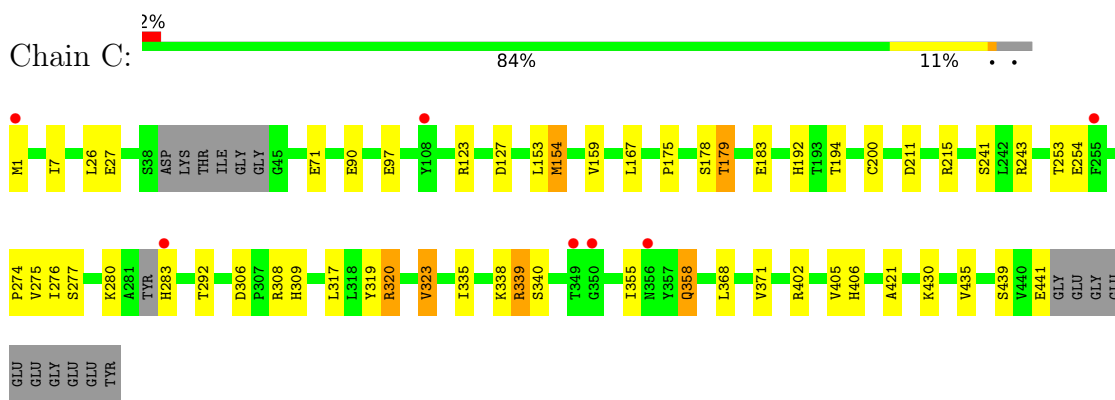
### 3 Residue-property plots [i](#)

These plots are drawn for all protein, RNA, DNA and oligosaccharide chains in the entry. The first graphic for a chain summarises the proportions of the various outlier classes displayed in the second graphic. The second graphic shows the sequence view annotated by issues in geometry and electron density. Residues are color-coded according to the number of geometric quality criteria for which they contain at least one outlier: green = 0, yellow = 1, orange = 2 and red = 3 or more. A red dot above a residue indicates a poor fit to the electron density ( $RSRZ > 2$ ). Stretches of 2 or more consecutive residues without any outlier are shown as a green connector. Residues present in the sample, but not in the model, are shown in grey.

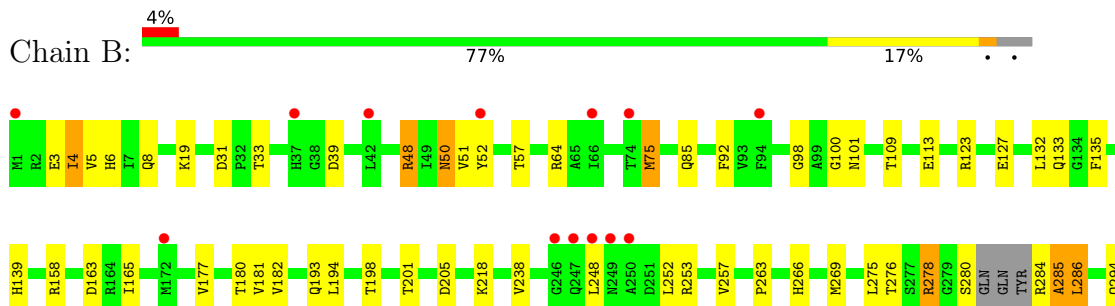
- Molecule 1: Tubulin alpha chain



- Molecule 1: Tubulin alpha chain

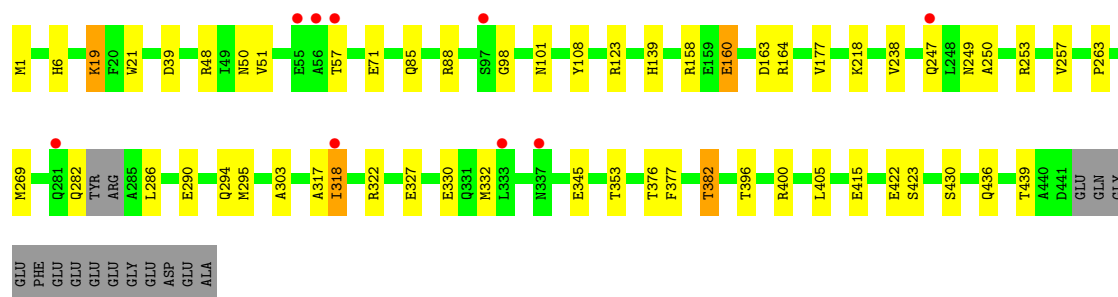
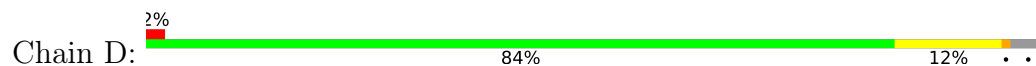


- Molecule 2: Tubulin beta chain

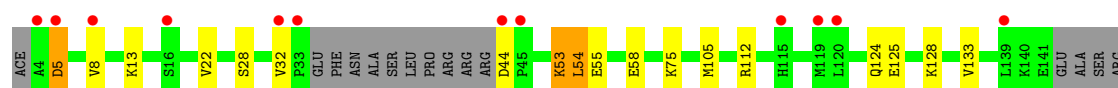
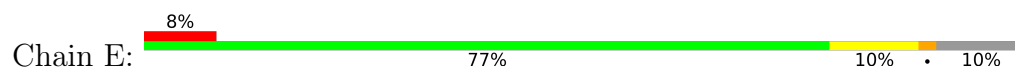




- Molecule 2: Tubulin beta chain



- Molecule 3: Stathmin-4



## 4 Data and refinement statistics

Property	Value	Source
Space group	P 21 21 21	Depositor
Cell constants a, b, c, $\alpha$ , $\beta$ , $\gamma$	65.12Å 128.30Å 252.72Å 90.00° 90.00° 90.00°	Depositor
Resolution (Å)	126.00 – 2.12 126.36 – 2.12	Depositor EDS
% Data completeness (in resolution range)	52.0 (126.00-2.12) 52.0 (126.36-2.12)	Depositor EDS
$R_{merge}$	(Not available)	Depositor
$R_{sym}$	(Not available)	Depositor
$\langle I/\sigma(I) \rangle$ <sup>1</sup>	1.72 (at 2.12Å)	Xtrriage
Refinement program	BUSTER 2.10.3	Depositor
R, $R_{free}$	0.192 , 0.226 0.204 , 0.238	Depositor DCC
$R_{free}$ test set	3166 reflections (5.04%)	wwPDB-VP
Wilson B-factor (Å <sup>2</sup> )	50.1	Xtrriage
Anisotropy	0.119	Xtrriage
Bulk solvent $k_{sol}$ (e/Å <sup>3</sup> ), $B_{sol}$ (Å <sup>2</sup> )	(Not available) , (Not available)	EDS
L-test for twinning <sup>2</sup>	$\langle  L  \rangle = 0.48$ , $\langle L^2 \rangle = 0.31$	Xtrriage
Estimated twinning fraction	No twinning to report.	Xtrriage
$F_o, F_c$ correlation	0.94	EDS
Total number of atoms	14923	wwPDB-VP
Average B, all atoms (Å <sup>2</sup> )	66.0	wwPDB-VP

Xtrriage's analysis on translational NCS is as follows: *The largest off-origin peak in the Patterson function is 3.25% of the height of the origin peak. No significant pseudotranslation is detected.*

<sup>1</sup>Intensities estimated from amplitudes.

<sup>2</sup>Theoretical values of  $\langle |L| \rangle$ ,  $\langle L^2 \rangle$  for acentric reflections are 0.5, 0.333 respectively for untwinned datasets, and 0.375, 0.2 for perfectly twinned datasets.

## 5 Model quality [i](#)

### 5.1 Standard geometry [i](#)

Bond lengths and bond angles in the following residue types are not validated in this section: N9B, GTP, MG, GDP, SO4

The Z score for a bond length (or angle) is the number of standard deviations the observed value is removed from the expected value. A bond length (or angle) with  $|Z| > 5$  is considered an outlier worth inspection. RMSZ is the root-mean-square of all Z scores of the bond lengths (or angles).

Mol	Chain	Bond lengths		Bond angles	
		RMSZ	# Z  >5	RMSZ	# Z  >5
1	A	0.39	0/3419	0.55	0/4641
1	C	0.43	0/3465	0.58	0/4702
2	B	0.42	0/3486	0.57	0/4721
2	D	0.44	0/3478	0.58	0/4711
3	E	0.37	0/1063	0.49	0/1415
All	All	0.42	0/14911	0.56	0/20190

There are no bond length outliers.

There are no bond angle outliers.

There are no chirality outliers.

There are no planarity outliers.

### 5.2 Too-close contacts [i](#)

In the following table, the Non-H and H(model) columns list the number of non-hydrogen atoms and hydrogen atoms in the chain respectively. The H(added) column lists the number of hydrogen atoms added and optimized by MolProbity. The Clashes column lists the number of clashes within the asymmetric unit, whereas Symm-Clashes lists symmetry-related clashes.

Mol	Chain	Non-H	H(model)	H(added)	Clashes	Symm-Clashes
1	A	3345	0	3247	25	0
1	C	3390	0	3299	25	0
2	B	3411	0	3288	56	0
2	D	3401	0	3274	27	0
3	E	1052	0	1060	10	0
4	A	5	0	0	1	0
4	B	10	0	0	1	0
4	C	10	0	0	0	0

*Continued on next page...*

Continued from previous page...

Mol	Chain	Non-H	H(model)	H(added)	Clashes	Symm-Clashes
4	D	10	0	0	0	0
5	A	32	0	12	0	0
5	C	32	0	12	0	0
6	A	1	0	0	0	0
6	D	1	0	0	0	0
7	B	28	0	12	0	0
7	D	28	0	12	0	0
8	B	25	0	0	0	0
8	D	25	0	0	1	0
9	A	17	0	0	0	0
9	B	19	0	0	0	0
9	C	49	0	0	0	0
9	D	29	0	0	1	0
9	E	3	0	0	0	0
All	All	14923	0	14216	133	0

The all-atom clashscore is defined as the number of clashes found per 1000 atoms (including hydrogen atoms). The all-atom clashscore for this structure is 5.

The worst 5 of 133 close contacts within the same asymmetric unit are listed below, sorted by their clash magnitude.

Atom-1	Atom-2	Interatomic distance (Å)	Clash overlap (Å)
3:E:124:GLN:HB3	3:E:128:LYS:HZ2	1.35	0.92
2:B:248[B]:LEU:HD13	2:B:352:LYS:HG2	1.55	0.86
2:B:248[B]:LEU:CD1	2:B:352:LYS:HG2	2.05	0.84
2:D:382:THR:HG21	2:D:436:GLN:HB2	1.60	0.84
2:B:332:MET:HG3	2:B:353:THR:HG21	1.61	0.82

There are no symmetry-related clashes.

## 5.3 Torsion angles [i](#)

### 5.3.1 Protein backbone [i](#)

In the following table, the Percentiles column shows the percent Ramachandran outliers of the chain as a percentile score with respect to all X-ray entries followed by that with respect to entries of similar resolution.

The Analysed column shows the number of residues for which the backbone conformation was analysed, and the total number of residues.

Mol	Chain	Analysed	Favoured	Allowed	Outliers	Percentiles	
1	A	420/451 (93%)	409 (97%)	11 (3%)	0	100	100
1	C	428/451 (95%)	418 (98%)	9 (2%)	1 (0%)	47	48
2	B	431/445 (97%)	422 (98%)	6 (1%)	3 (1%)	22	17
2	D	430/445 (97%)	422 (98%)	7 (2%)	1 (0%)	47	48
3	E	124/143 (87%)	122 (98%)	2 (2%)	0	100	100
All	All	1833/1935 (95%)	1793 (98%)	35 (2%)	5 (0%)	41	40

All (5) Ramachandran outliers are listed below:

Mol	Chain	Res	Type
2	B	286	LEU
2	B	98	GLY
2	B	285	ALA
1	C	178	SER
2	D	98	GLY

### 5.3.2 Protein sidechains [i](#)

In the following table, the Percentiles column shows the percent sidechain outliers of the chain as a percentile score with respect to all X-ray entries followed by that with respect to entries of similar resolution.

The Analysed column shows the number of residues for which the sidechain conformation was analysed, and the total number of residues.

Mol	Chain	Analysed	Rotameric	Outliers	Percentiles	
1	A	362/379 (96%)	349 (96%)	13 (4%)	35	35
1	C	366/379 (97%)	346 (94%)	20 (6%)	21	18
2	B	374/383 (98%)	355 (95%)	19 (5%)	24	21
2	D	375/383 (98%)	350 (93%)	25 (7%)	16	13
3	E	113/125 (90%)	103 (91%)	10 (9%)	10	6
All	All	1590/1649 (96%)	1503 (94%)	87 (6%)	21	18

5 of 87 residues with a non-rotameric sidechain are listed below:

Mol	Chain	Res	Type
2	D	85	GLN
2	D	345	GLU
2	D	101	ASN

*Continued on next page...*

*Continued from previous page...*

Mol	Chain	Res	Type
2	D	238	VAL
2	D	430	SER

Sometimes sidechains can be flipped to improve hydrogen bonding and reduce clashes. 5 of 12 such sidechains are listed below:

Mol	Chain	Res	Type
2	D	193	GLN
2	D	281	GLN
2	D	433	GLN
2	D	331	GLN
1	C	101	ASN

### 5.3.3 RNA [i](#)

There are no RNA molecules in this entry.

## 5.4 Non-standard residues in protein, DNA, RNA chains [i](#)

There are no non-standard protein/DNA/RNA residues in this entry.

## 5.5 Carbohydrates [i](#)

There are no monosaccharides in this entry.

## 5.6 Ligand geometry [i](#)

Of 15 ligands modelled in this entry, 2 are monoatomic - leaving 13 for Mogul analysis.

There are no bond length outliers.

There are no bond angle outliers.

There are no chirality outliers.

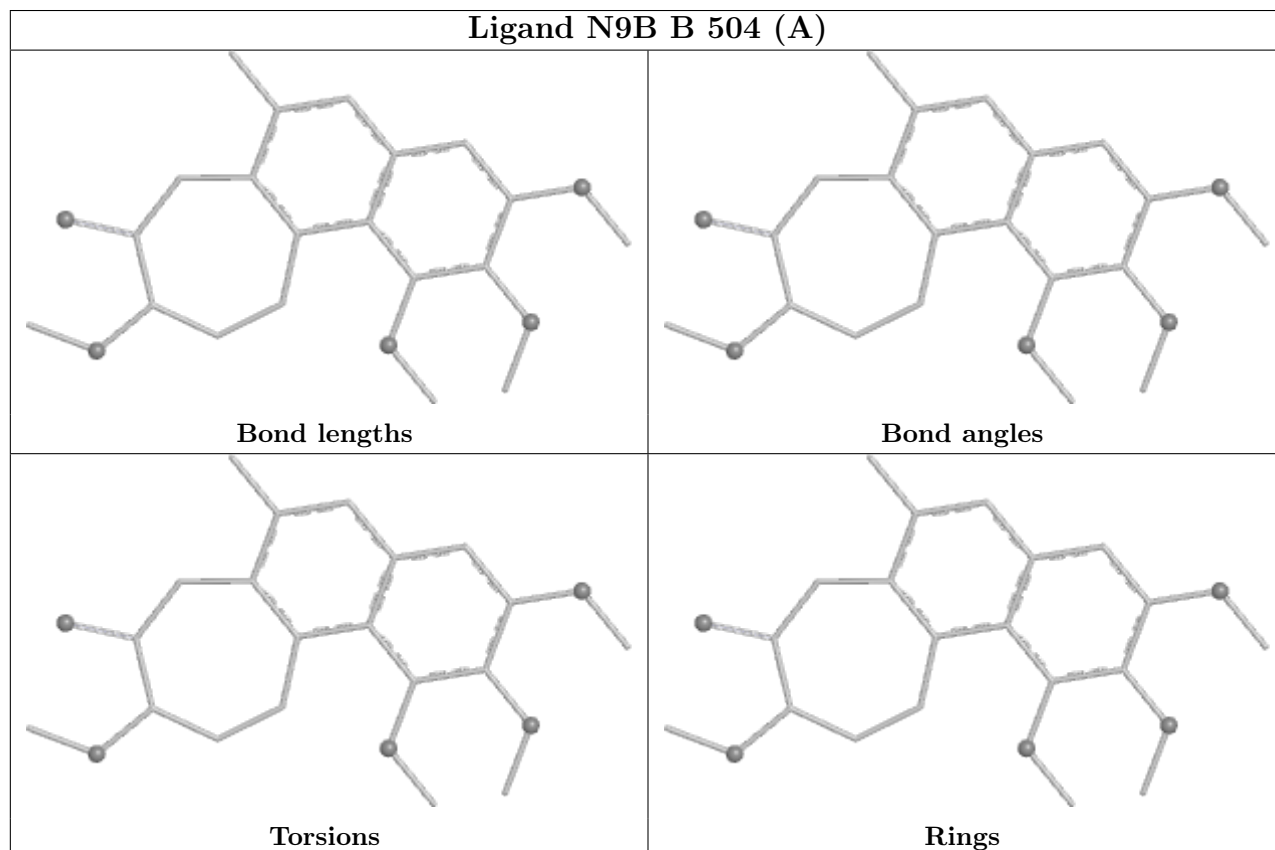
There are no torsion outliers.

There are no ring outliers.

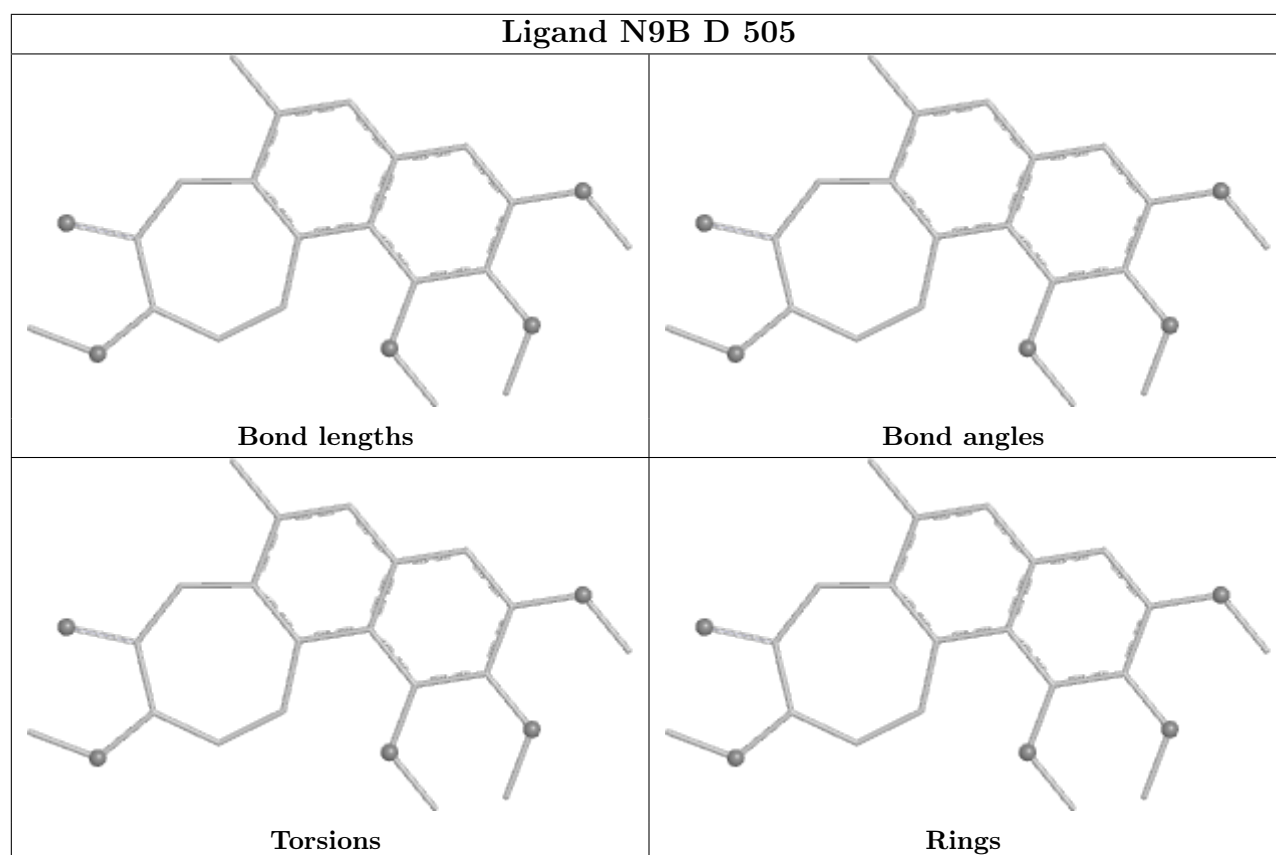
No monomer is involved in short contacts.

The following is a two-dimensional graphical depiction of Mogul quality analysis of bond lengths, bond angles, torsion angles, and ring geometry for all instances of the Ligand of Interest. In addition, ligands with molecular weight > 250 and outliers as shown on the validation Tables will

also be included. For torsion angles, if less than 5% of the Mogul distribution of torsion angles is within 10 degrees of the torsion angle in question, then that torsion angle is considered an outlier. Any bond that is central to one or more torsion angles identified as an outlier by Mogul will be highlighted in the graph. For rings, the root-mean-square deviation (RMSD) between the ring in question and similar rings identified by Mogul is calculated over all ring torsion angles. If the average RMSD is greater than 60 degrees and the minimal RMSD between the ring in question and any Mogul-identified rings is also greater than 60 degrees, then that ring is considered an outlier. The outliers are highlighted in purple. The color gray indicates Mogul did not find sufficient equivalents in the CSD to analyse the geometry.







## 5.7 Other polymers [i](#)

There are no such residues in this entry.

## 5.8 Polymer linkage issues [i](#)

There are no chain breaks in this entry.

## 6 Fit of model and data [i](#)

### 6.1 Protein, DNA and RNA chains [i](#)

In the following table, the column labelled ‘#RSRZ > 2’ contains the number (and percentage) of RSRZ outliers, followed by percent RSRZ outliers for the chain as percentile scores relative to all X-ray entries and entries of similar resolution. The OWAB column contains the minimum, median, 95<sup>th</sup> percentile and maximum values of the occupancy-weighted average B-factor per residue. The column labelled ‘Q < 0.9’ lists the number of (and percentage) of residues with an average occupancy less than 0.9.

Mol	Chain	Analysed	<RSRZ>	#RSRZ>2	OWAB(Å <sup>2</sup> )	Q<0.9
1	A	428/451 (94%)	0.48	22 (5%) 28 33	41, 73, 106, 135	0
1	C	434/451 (96%)	0.20	7 (1%) 72 76	37, 57, 82, 99	0
2	B	428/445 (96%)	0.38	17 (3%) 38 44	39, 64, 112, 135	0
2	D	429/445 (96%)	0.27	9 (2%) 63 68	31, 52, 87, 102	0
3	E	128/143 (89%)	0.71	12 (9%) 8 10	63, 88, 126, 132	0
All	All	1847/1935 (95%)	0.36	67 (3%) 42 49	31, 64, 104, 135	0

The worst 5 of 67 RSRZ outliers are listed below:

Mol	Chain	Res	Type	RSRZ
1	A	335	ILE	7.2
3	E	33	PRO	6.6
1	A	45	GLY	6.6
1	A	336	LYS	5.9
2	D	56	ALA	5.5

### 6.2 Non-standard residues in protein, DNA, RNA chains [i](#)

There are no non-standard protein/DNA/RNA residues in this entry.

### 6.3 Carbohydrates [i](#)

There are no monosaccharides in this entry.

### 6.4 Ligands [i](#)

In the following table, the Atoms column lists the number of modelled atoms in the group and the number defined in the chemical component dictionary. The B-factors column lists the minimum,

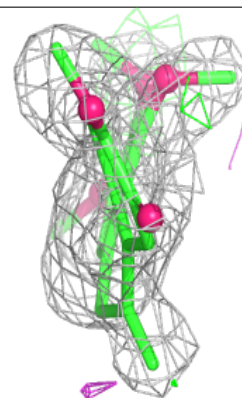
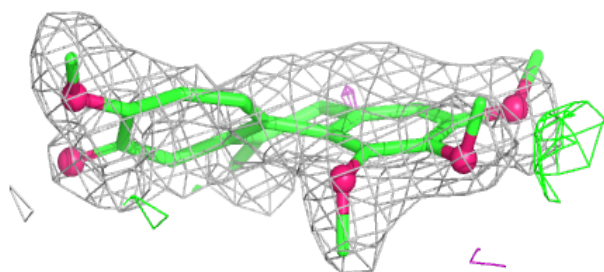
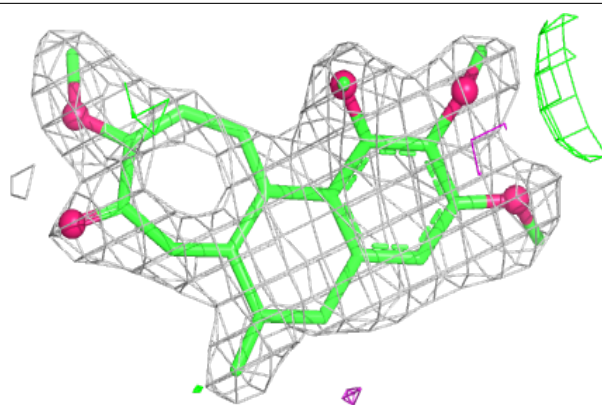
median, 95<sup>th</sup> percentile and maximum values of B factors of atoms in the group. The column labelled 'Q< 0.9' lists the number of atoms with occupancy less than 0.9.

Mol	Type	Chain	Res	Atoms	RSCC	RSR	B-factors(Å <sup>2</sup> )	Q<0.9
4	SO4	D	503	5/5	0.64	0.38	157,157,157,157	0
4	SO4	B	501	5/5	0.66	0.17	144,145,145,145	0
4	SO4	C	502	5/5	0.68	0.66	172,172,172,172	0
4	SO4	C	501	5/5	0.85	0.20	150,151,151,151	0
4	SO4	A	501	5/5	0.87	0.23	124,124,124,124	0
8	N9B	B	504[A]	25/25	0.87	0.19	44,46,47,47	25
4	SO4	D	502	5/5	0.89	0.12	118,118,118,118	0
8	N9B	D	505	25/25	0.94	0.14	50,51,52,53	0
4	SO4	B	502	5/5	0.95	0.12	98,98,98,98	0
5	GTP	A	502	32/32	0.98	0.12	47,48,49,49	0
7	GDP	B	503	28/28	0.98	0.12	51,52,53,53	0
5	GTP	C	503	32/32	0.99	0.12	43,45,45,45	0
7	GDP	D	504	28/28	0.99	0.13	40,41,43,43	0
6	MG	A	503	1/1	0.99	0.06	50,50,50,50	0
6	MG	D	501	1/1	0.99	0.09	46,46,46,46	0

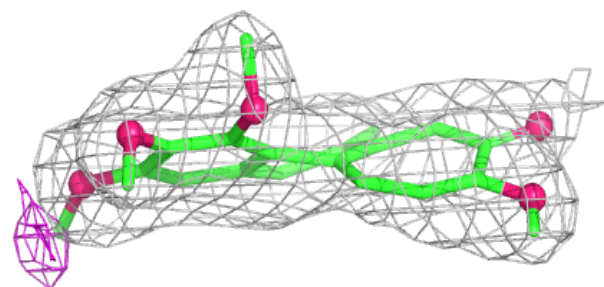
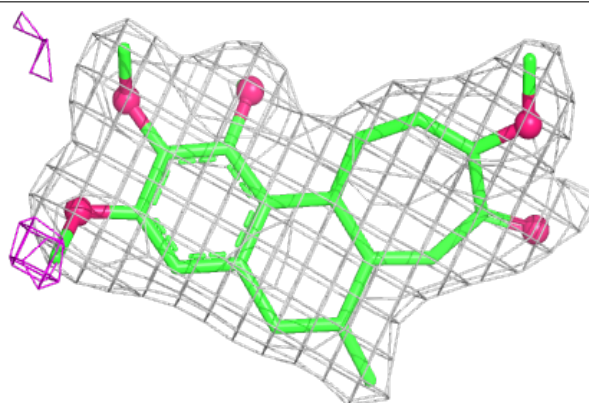
The following is a graphical depiction of the model fit to experimental electron density of all instances of the Ligand of Interest. In addition, ligands with molecular weight > 250 and outliers as shown on the geometry validation Tables will also be included. Each fit is shown from different orientation to approximate a three-dimensional view.

**Electron density around N9B B 504 (A):**

$2mF_o-DF_c$  (at 0.7 rmsd) in gray  
 $mF_o-DF_c$  (at 3 rmsd) in purple (negative)  
and green (positive)

**Electron density around N9B D 505:**

$2mF_o-DF_c$  (at 0.7 rmsd) in gray  
 $mF_o-DF_c$  (at 3 rmsd) in purple (negative)  
and green (positive)



## 6.5 Other polymers [i](#)

There are no such residues in this entry.