



Full wwPDB X-ray Structure Validation Report ⓘ

Sep 28, 2024 – 08:26 AM EDT

PDB ID : 5TMG
Title : Optimization of 3,5-Disubstitued Piperidine: Discovery of Non-Peptide mimetics as an Orally Active Renin Inhibitor
Authors : Snell, G.P.; Behnke, C.A.; Okada, K.; Hideyuki, O.; Sang, B.C.; Lane, W.
Deposited on : 2016-10-12
Resolution : 2.20 Å(reported)

This is a Full wwPDB X-ray Structure Validation Report for a publicly released PDB entry.

We welcome your comments at validation@mail.wwpdb.org

A user guide is available at

<https://www.wwpdb.org/validation/2017/XrayValidationReportHelp>

with specific help available everywhere you see the ⓘ symbol.

The types of validation reports are described at

<http://www.wwpdb.org/validation/2017/FAQs#types>.

The following versions of software and data (see [references ⓘ](#)) were used in the production of this report:

MolProbity : 4.02b-467
Mogul : 2022.3.0, CSD as543be (2022)
Xtrriage (Phenix) : 1.20.1
EDS : 3.0
buster-report : 1.1.7 (2018)
Percentile statistics : 20231227.v01 (using entries in the PDB archive December 27th 2023)
CCP4 : 9.0.003 (Gargrove)
Density-Fitness : 1.0.11
Ideal geometry (proteins) : Engh & Huber (2001)
Ideal geometry (DNA, RNA) : Parkinson et al. (1996)
Validation Pipeline (wwPDB-VP) : 2.39

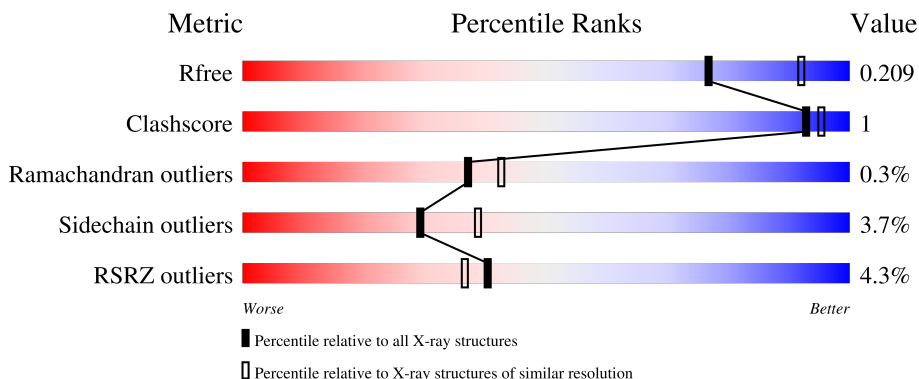
1 Overall quality at a glance

The following experimental techniques were used to determine the structure:

X-RAY DIFFRACTION

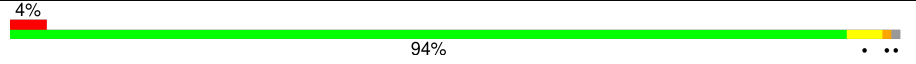
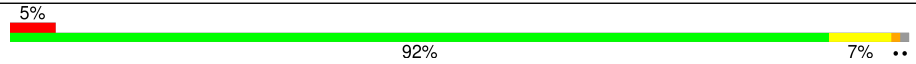
The reported resolution of this entry is 2.20 Å.

Percentile scores (ranging between 0-100) for global validation metrics of the entry are shown in the following graphic. The table shows the number of entries on which the scores are based.



Metric	Whole archive (#Entries)	Similar resolution (#Entries, resolution range(Å))
R_{free}	164625	5791 (2.20-2.20)
Clashscore	180529	6634 (2.20-2.20)
Ramachandran outliers	177936	6560 (2.20-2.20)
Sidechain outliers	177891	6561 (2.20-2.20)
RSRZ outliers	164620	5791 (2.20-2.20)

The table below summarises the geometric issues observed across the polymeric chains and their fit to the electron density. The red, orange, yellow and green segments of the lower bar indicate the fraction of residues that contain outliers for ≥ 3 , 2, 1 and 0 types of geometric quality criteria respectively. A grey segment represents the fraction of residues that are not modelled. The numeric value for each fraction is indicated below the corresponding segment, with a dot representing fractions $\leq 5\%$. The upper red bar (where present) indicates the fraction of residues that have poor fit to the electron density. The numeric value is given above the bar.

Mol	Chain	Length	Quality of chain
1	A	337	 4% 94%
1	B	337	 5% 92% 7%

2 Entry composition [i](#)

There are 7 unique types of molecules in this entry. The entry contains 5520 atoms, of which 0 are hydrogens and 0 are deuteriums.

In the tables below, the ZeroOcc column contains the number of atoms modelled with zero occupancy, the AltConf column contains the number of residues with at least one atom in alternate conformation and the Trace column contains the number of residues modelled with at most 2 atoms.

- Molecule 1 is a protein called Renin.

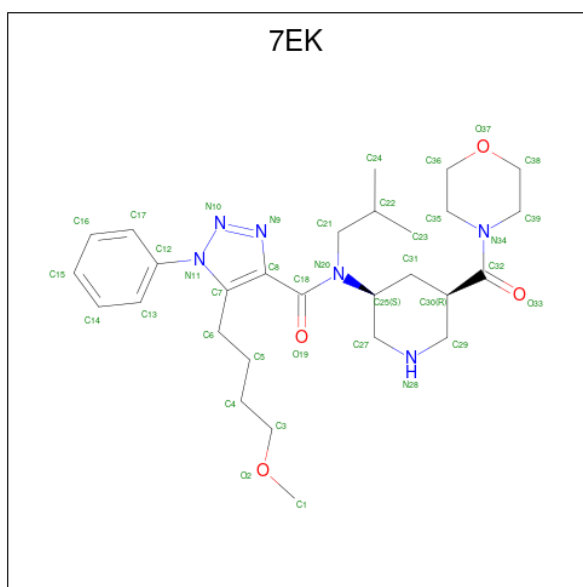
Mol	Chain	Residues	Atoms					ZeroOcc	AltConf	Trace
			Total	C	N	O	S			
1	A	334	Total 2561	C 1636	N 414	O 497	S 14	0	1	0
1	B	334	Total 2561	C 1635	N 413	O 499	S 14	0	0	0

- Molecule 2 is 2-acetamido-2-deoxy-beta-D-glucopyranose (three-letter code: NAG) (formula: $C_8H_{15}NO_6$).



Mol	Chain	Residues	Atoms				ZeroOcc	AltConf
			Total	C	N	O		
2	A	1	Total 14	C 8	N 1	O 5	0	0
2	B	1	Total 14	C 8	N 1	O 5	0	0

- Molecule 3 is 5-(4-methoxybutyl)-N-(2-methylpropyl)-N-[(3S,5R)-5-(morpholine-4-carbonyl)piperidin-3-yl]-1-phenyl-1H-1,2,3-triazole-4-carboxamide (three-letter code: 7EK) (formula: $C_{28}H_{42}N_6O_4$).



Mol	Chain	Residues	Atoms			ZeroOcc	AltConf	
3	A	1	Total	C	N	O	0	0
			38	28	6	4		
3	B	1	Total	C	N	O	0	0
			38	28	6	4		

- Molecule 4 is TRIETHYLENE GLYCOL (three-letter code: PGE) (formula: C₆H₁₄O₄).



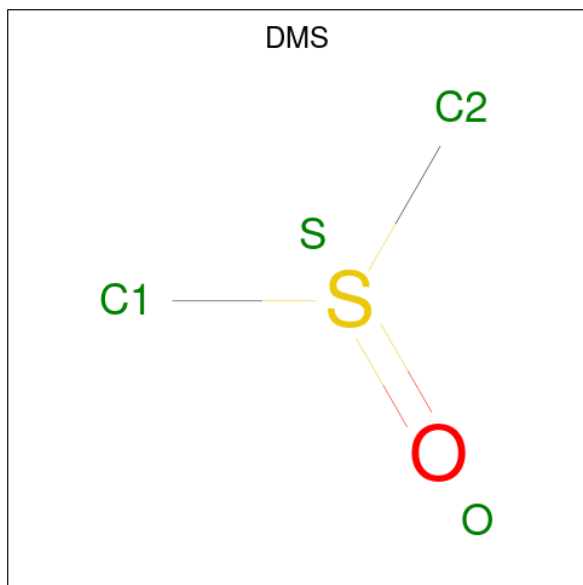
Mol	Chain	Residues	Atoms			ZeroOcc	AltConf
4	A	1	Total	C	O	0	0
			10	6	4		
4	B	1	Total	C	O	0	0
			10	6	4		

- Molecule 5 is DI(HYDROXYETHYL)ETHER (three-letter code: PEG) (formula: C₄H₁₀O₃).



Mol	Chain	Residues	Atoms			ZeroOcc	AltConf
5	A	1	Total	C	O	0	0
			7	4	3		

- Molecule 6 is DIMETHYL SULFOXIDE (three-letter code: DMS) (formula: C₂H₆OS).



Mol	Chain	Residues	Atoms				ZeroOcc	AltConf
6	A	1	Total	C	O	S	0	0
			4	2	1	1		
6	A	1	Total	C	O	S	0	0
			4	2	1	1		

Continued on next page...

Continued from previous page...

Mol	Chain	Residues	Atoms				ZeroOcc	AltConf
			Total	C	O	S		
6	A	1	4	2	1	1	0	0

- Molecule 7 is water.

Mol	Chain	Residues	Atoms		ZeroOcc	AltConf
7	A	139	Total	O	0	0
			139	139		
7	B	116	Total	O	0	0
			116	116		

3 Residue-property plots [i](#)

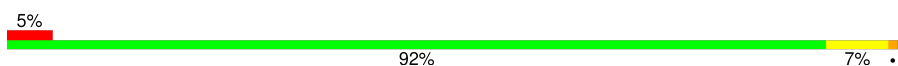
These plots are drawn for all protein, RNA, DNA and oligosaccharide chains in the entry. The first graphic for a chain summarises the proportions of the various outlier classes displayed in the second graphic. The second graphic shows the sequence view annotated by issues in geometry and electron density. Residues are color-coded according to the number of geometric quality criteria for which they contain at least one outlier: green = 0, yellow = 1, orange = 2 and red = 3 or more. A red dot above a residue indicates a poor fit to the electron density ($RSRZ > 2$). Stretches of 2 or more consecutive residues without any outlier are shown as a green connector. Residues present in the sample, but not in the model, are shown in grey.

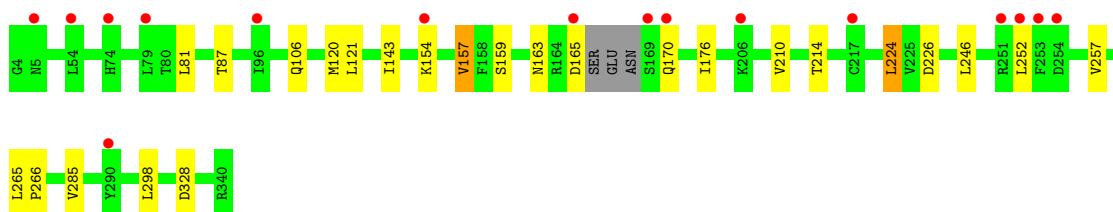
- Molecule 1: Renin

Chain A: 



- Molecule 1: Renin

Chain B: 



4 Data and refinement statistics

Property	Value	Source
Space group	P 21 3	Depositor
Cell constants a, b, c, α , β , γ	140.00Å 140.00Å 140.00Å 90.00° 90.00° 90.00°	Depositor
Resolution (Å)	50.01 – 2.20 50.01 – 2.20	Depositor EDS
% Data completeness (in resolution range)	99.6 (50.01-2.20) 99.6 (50.01-2.20)	Depositor EDS
R_{merge}	0.09	Depositor
R_{sym}	(Not available)	Depositor
$\langle I/\sigma(I) \rangle$ ¹	1.99 (at 2.20Å)	Xtrriage
Refinement program	REFMAC 5.8.0135	Depositor
R, R_{free}	0.184 , 0.210 0.188 , 0.209	Depositor DCC
R_{free} test set	2355 reflections (5.07%)	wwPDB-VP
Wilson B-factor (Å ²)	40.1	Xtrriage
Anisotropy	0.000	Xtrriage
Bulk solvent k_{sol} (e/Å ³), B_{sol} (Å ²)	0.37 , 39.3	EDS
L-test for twinning ²	$\langle L \rangle = 0.51$, $\langle L^2 \rangle = 0.35$	Xtrriage
Estimated twinning fraction	0.019 for l,-k,h	Xtrriage
F_o, F_c correlation	0.96	EDS
Total number of atoms	5520	wwPDB-VP
Average B, all atoms (Å ²)	48.0	wwPDB-VP

Xtrriage's analysis on translational NCS is as follows: *The largest off-origin peak in the Patterson function is 2.26% of the height of the origin peak. No significant pseudotranslation is detected.*

¹Intensities estimated from amplitudes.

²Theoretical values of $\langle |L| \rangle$, $\langle L^2 \rangle$ for acentric reflections are 0.5, 0.333 respectively for untwinned datasets, and 0.375, 0.2 for perfectly twinned datasets.

5 Model quality [i](#)

5.1 Standard geometry [i](#)

Bond lengths and bond angles in the following residue types are not validated in this section: PEG, PGE, NAG, 7EK, DMS

The Z score for a bond length (or angle) is the number of standard deviations the observed value is removed from the expected value. A bond length (or angle) with $|Z| > 5$ is considered an outlier worth inspection. RMSZ is the root-mean-square of all Z scores of the bond lengths (or angles).

Mol	Chain	Bond lengths		Bond angles	
		RMSZ	# Z >5	RMSZ	# Z >5
1	A	0.43	0/2623	0.65	0/3560
1	B	0.41	0/2620	0.65	0/3555
All	All	0.42	0/5243	0.65	0/7115

There are no bond length outliers.

There are no bond angle outliers.

There are no chirality outliers.

There are no planarity outliers.

5.2 Too-close contacts [i](#)

In the following table, the Non-H and H(model) columns list the number of non-hydrogen atoms and hydrogen atoms in the chain respectively. The H(added) column lists the number of hydrogen atoms added and optimized by MolProbity. The Clashes column lists the number of clashes within the asymmetric unit, whereas Symm-Clashes lists symmetry-related clashes.

Mol	Chain	Non-H	H(model)	H(added)	Clashes	Symm-Clashes
1	A	2561	0	2478	7	0
1	B	2561	0	2474	7	0
2	A	14	0	13	0	0
2	B	14	0	13	0	0
3	A	38	0	0	0	0
3	B	38	0	0	0	0
4	A	10	0	14	0	0
4	B	10	0	14	0	0
5	A	7	0	10	0	0
6	A	12	0	18	0	0
7	A	139	0	0	0	0

Continued on next page...

Continued from previous page...

Mol	Chain	Non-H	H(model)	H(added)	Clashes	Symm-Clashes
7	B	116	0	0	0	0
All	All	5520	0	5034	14	0

The all-atom clashscore is defined as the number of clashes found per 1000 atoms (including hydrogen atoms). The all-atom clashscore for this structure is 1.

All (14) close contacts within the same asymmetric unit are listed below, sorted by their clash magnitude.

Atom-1	Atom-2	Interatomic distance (Å)	Clash overlap (Å)
1:A:8:SER:OG	1:A:100:GLY:O	2.23	0.52
1:A:14:ASN:C	1:A:14:ASN:HD22	2.12	0.50
1:A:145:ASP:OD1	1:A:329:ARG:NH1	2.44	0.50
1:B:285:VAL:HG22	1:B:298:LEU:HD22	1.94	0.48
1:B:257:VAL:HG11	1:B:265:LEU:HD11	1.95	0.47
1:A:14:ASN:HD21	1:A:17:ASP:HA	1.80	0.46
1:A:14:ASN:HD21	1:A:17:ASP:H	1.64	0.45
1:A:156:ASP:HB3	1:A:330:ARG:HB2	1.99	0.44
1:B:224:LEU:HD13	1:B:226:ASP:HB2	1.98	0.44
1:A:14:ASN:C	1:A:14:ASN:ND2	2.73	0.42
1:B:106:GLN:NE2	1:B:143:ILE:HA	2.35	0.42
1:B:159:SER:O	1:B:176:ILE:HA	2.20	0.41
1:B:157:VAL:HG22	1:B:328:ASP:HA	2.02	0.41
1:B:210:VAL:HG13	1:B:266:PRO:HG2	2.03	0.41

There are no symmetry-related clashes.

5.3 Torsion angles [i](#)

5.3.1 Protein backbone [i](#)

In the following table, the Percentiles column shows the percent Ramachandran outliers of the chain as a percentile score with respect to all X-ray entries followed by that with respect to entries of similar resolution.

The Analysed column shows the number of residues for which the backbone conformation was analysed, and the total number of residues.

Mol	Chain	Analysed	Favoured	Allowed	Outliers	Percentiles
1	A	331/337 (98%)	327 (99%)	4 (1%)	0	100 100
1	B	330/337 (98%)	321 (97%)	7 (2%)	2 (1%)	22 23

Continued on next page...

Continued from previous page...

Mol	Chain	Analysed	Favoured	Allowed	Outliers	Percentiles	
All	All	661/674 (98%)	648 (98%)	11 (2%)	2 (0%)	37	42

All (2) Ramachandran outliers are listed below:

Mol	Chain	Res	Type
1	B	252	LEU
1	B	214	THR

5.3.2 Protein sidechains [i](#)

In the following table, the Percentiles column shows the percent sidechain outliers of the chain as a percentile score with respect to all X-ray entries followed by that with respect to entries of similar resolution.

The Analysed column shows the number of residues for which the sidechain conformation was analysed, and the total number of residues.

Mol	Chain	Analysed	Rotameric	Outliers	Percentiles	
1	A	281/287 (98%)	271 (96%)	10 (4%)	30	40
1	B	281/287 (98%)	270 (96%)	11 (4%)	27	37
All	All	562/574 (98%)	541 (96%)	21 (4%)	29	39

All (21) residues with a non-rotameric sidechain are listed below:

Mol	Chain	Res	Type
1	A	14	ASN
1	A	23	GLU
1	A	140	VAL
1	A	145	ASP
1	A	163	ASN
1	A	204	GLN
1	A	265	LEU
1	A	301	HIS
1	A	333	ARG
1	A	340	ARG
1	B	81	LEU
1	B	87	THR
1	B	120	MET
1	B	121	LEU
1	B	154	LYS
1	B	157	VAL

Continued on next page...

Continued from previous page...

Mol	Chain	Res	Type
1	B	163	ASN
1	B	165	ASP
1	B	170	GLN
1	B	224	LEU
1	B	246	LEU

Sometimes sidechains can be flipped to improve hydrogen bonding and reduce clashes. All (9) such sidechains are listed below:

Mol	Chain	Res	Type
1	A	14	ASN
1	A	163	ASN
1	A	184	GLN
1	A	202	GLN
1	B	106	GLN
1	B	146	ASN
1	B	163	ASN
1	B	194	ASN
1	B	301	HIS

5.3.3 RNA [i](#)

There are no RNA molecules in this entry.

5.4 Non-standard residues in protein, DNA, RNA chains [i](#)

There are no non-standard protein/DNA/RNA residues in this entry.

5.5 Carbohydrates [i](#)

There are no oligosaccharides in this entry.

5.6 Ligand geometry [i](#)

10 ligands are modelled in this entry.

In the following table, the Counts columns list the number of bonds (or angles) for which Mogul statistics could be retrieved, the number of bonds (or angles) that are observed in the model and the number of bonds (or angles) that are defined in the Chemical Component Dictionary. The Link column lists molecule types, if any, to which the group is linked. The Z score for a bond

length (or angle) is the number of standard deviations the observed value is removed from the expected value. A bond length (or angle) with $|Z| > 2$ is considered an outlier worth inspection. RMSZ is the root-mean-square of all Z scores of the bond lengths (or angles).

Mol	Type	Chain	Res	Link	Bond lengths			Bond angles		
					Counts	RMSZ	# Z > 2	Counts	RMSZ	# Z > 2
6	DMS	A	407	-	3,3,3	0.61	0	3,3,3	0.39	0
6	DMS	A	405	-	3,3,3	0.54	0	3,3,3	0.57	0
4	PGE	B	403	-	9,9,9	0.48	0	8,8,8	0.30	0
2	NAG	B	401	1	14,14,15	0.24	0	17,19,21	0.83	1 (5%)
4	PGE	A	403	-	9,9,9	0.53	0	8,8,8	0.36	0
5	PEG	A	404	-	6,6,6	0.46	0	5,5,5	0.28	0
2	NAG	A	401	1	14,14,15	0.52	0	17,19,21	1.09	1 (5%)
6	DMS	A	406	-	3,3,3	0.58	0	3,3,3	0.47	0
3	7EK	B	402	-	38,41,41	1.13	2 (5%)	46,55,55	1.40	7 (15%)
3	7EK	A	402	-	38,41,41	1.12	2 (5%)	46,55,55	1.52	9 (19%)

In the following table, the Chirals column lists the number of chiral outliers, the number of chiral centers analysed, the number of these observed in the model and the number defined in the Chemical Component Dictionary. Similar counts are reported in the Torsion and Rings columns. '-' means no outliers of that kind were identified.

Mol	Type	Chain	Res	Link	Chirals	Torsions	Rings
4	PGE	B	403	-	-	3/7/7/7	-
2	NAG	B	401	1	-	1/6/23/26	0/1/1/1
4	PGE	A	403	-	-	5/7/7/7	-
5	PEG	A	404	-	-	2/4/4/4	-
2	NAG	A	401	1	-	2/6/23/26	0/1/1/1
3	7EK	B	402	-	-	5/31/52/52	0/4/4/4
3	7EK	A	402	-	-	5/31/52/52	0/4/4/4

All (4) bond length outliers are listed below:

Mol	Chain	Res	Type	Atoms	Z	Observed(Å)	Ideal(Å)
3	B	402	7EK	N9-N10	-3.86	1.27	1.34
3	A	402	7EK	N9-N10	-3.81	1.27	1.34
3	B	402	7EK	C8-C18	-3.15	1.48	1.51
3	A	402	7EK	C8-C18	-2.21	1.49	1.51

All (18) bond angle outliers are listed below:

Mol	Chain	Res	Type	Atoms	Z	Observed(°)	Ideal(°)
3	A	402	7EK	C30-C32-N34	5.08	123.58	118.80
3	B	402	7EK	C6-C7-N11	2.99	127.94	122.55
3	B	402	7EK	C39-N34-C35	2.95	118.70	112.68
3	A	402	7EK	C6-C7-N11	2.72	127.45	122.55
3	B	402	7EK	C8-N9-N10	2.62	110.21	107.08
3	A	402	7EK	C8-N9-N10	2.52	110.09	107.08
3	B	402	7EK	C30-C32-N34	2.51	121.17	118.80
3	B	402	7EK	O37-C36-C35	-2.47	106.46	111.77
3	A	402	7EK	O33-C32-N34	-2.39	118.76	121.61
2	B	401	NAG	O5-C1-C2	-2.33	107.68	111.29
3	A	402	7EK	N9-N10-N11	2.30	108.92	106.37
3	A	402	7EK	C36-C35-N34	-2.24	105.10	109.82
3	B	402	7EK	C25-N20-C18	-2.20	116.56	123.21
3	A	402	7EK	C5-C6-C7	-2.19	108.52	112.94
3	A	402	7EK	O33-C32-C30	-2.18	117.65	120.86
2	A	401	NAG	C1-C2-N2	2.18	113.87	110.43
3	A	402	7EK	C25-N20-C18	-2.07	116.96	123.21
3	B	402	7EK	N9-N10-N11	2.00	108.60	106.37

There are no chirality outliers.

All (23) torsion outliers are listed below:

Mol	Chain	Res	Type	Atoms
4	B	403	PGE	O3-C5-C6-O4
2	A	401	NAG	O5-C5-C6-O6
2	A	401	NAG	C4-C5-C6-O6
4	A	403	PGE	O3-C5-C6-O4
4	A	403	PGE	O1-C1-C2-O2
5	A	404	PEG	O1-C1-C2-O2
3	B	402	7EK	C4-C3-O2-C1
3	A	402	7EK	C22-C21-N20-C18
3	B	402	7EK	C3-C4-C5-C6
2	B	401	NAG	O5-C5-C6-O6
4	B	403	PGE	O2-C3-C4-O3
3	B	402	7EK	C22-C21-N20-C18
3	A	402	7EK	O19-C18-C8-C7
3	B	402	7EK	O19-C18-C8-C7
5	A	404	PEG	C4-C3-O2-C2
4	B	403	PGE	O1-C1-C2-O2
4	A	403	PGE	C3-C4-O3-C5
4	A	403	PGE	C1-C2-O2-C3
3	A	402	7EK	C3-C4-C5-C6
4	A	403	PGE	C6-C5-O3-C4

Continued on next page...

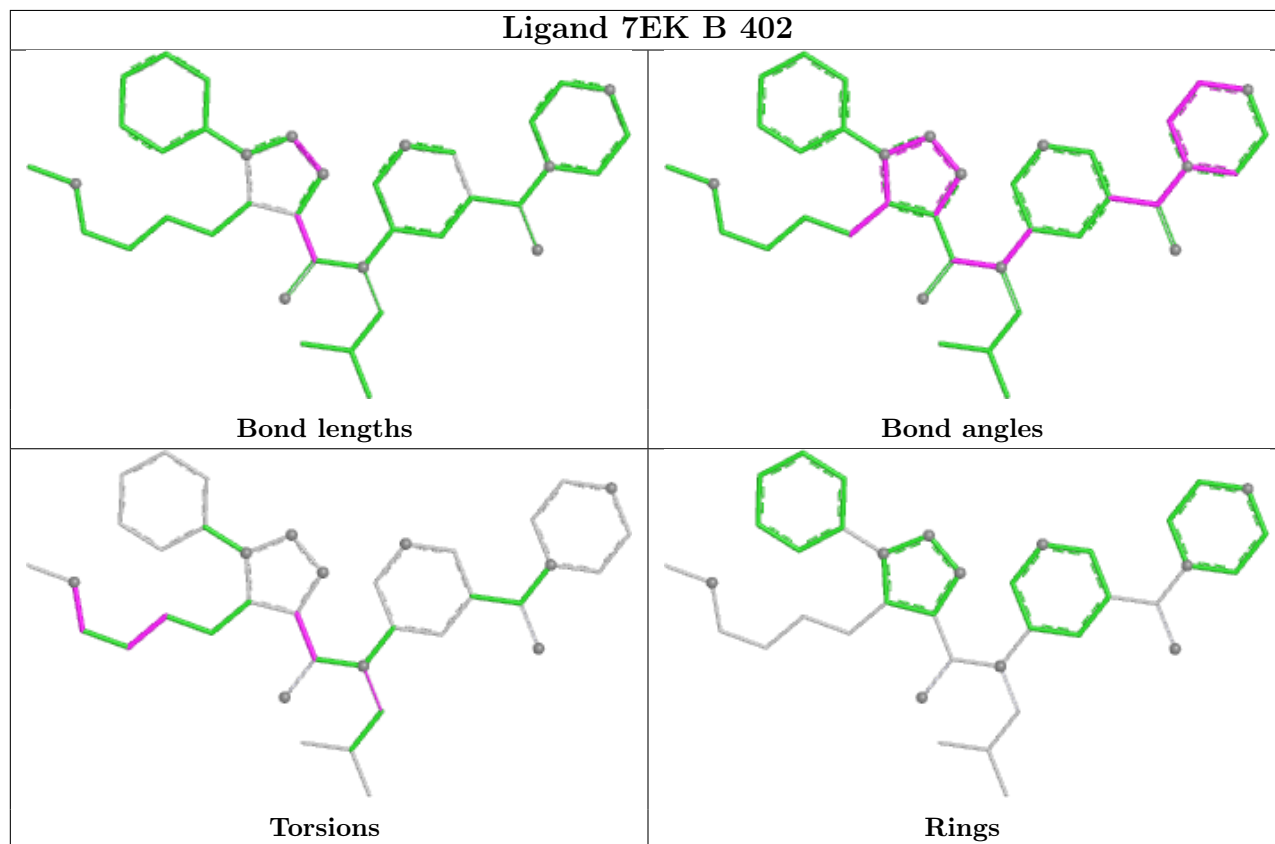
Continued from previous page...

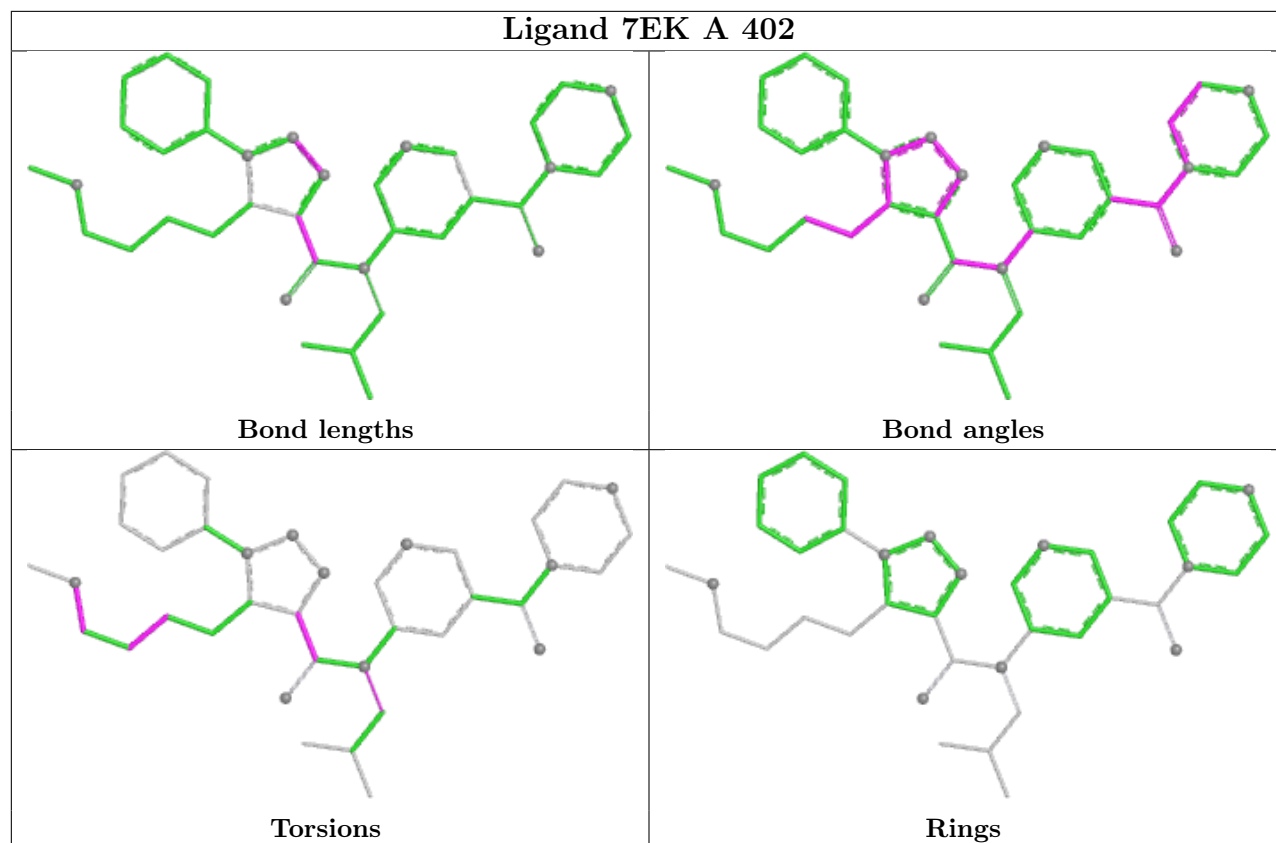
Mol	Chain	Res	Type	Atoms
3	A	402	7EK	C4-C3-O2-C1
3	A	402	7EK	C22-C21-N20-C25
3	B	402	7EK	C22-C21-N20-C25

There are no ring outliers.

No monomer is involved in short contacts.

The following is a two-dimensional graphical depiction of Mogul quality analysis of bond lengths, bond angles, torsion angles, and ring geometry for all instances of the Ligand of Interest. In addition, ligands with molecular weight > 250 and outliers as shown on the validation Tables will also be included. For torsion angles, if less than 5% of the Mogul distribution of torsion angles is within 10 degrees of the torsion angle in question, then that torsion angle is considered an outlier. Any bond that is central to one or more torsion angles identified as an outlier by Mogul will be highlighted in the graph. For rings, the root-mean-square deviation (RMSD) between the ring in question and similar rings identified by Mogul is calculated over all ring torsion angles. If the average RMSD is greater than 60 degrees and the minimal RMSD between the ring in question and any Mogul-identified rings is also greater than 60 degrees, then that ring is considered an outlier. The outliers are highlighted in purple. The color gray indicates Mogul did not find sufficient equivalents in the CSD to analyse the geometry.





5.7 Other polymers [\(i\)](#)

There are no such residues in this entry.

5.8 Polymer linkage issues [\(i\)](#)

There are no chain breaks in this entry.

6 Fit of model and data

6.1 Protein, DNA and RNA chains

In the following table, the column labelled ‘#RSRZ > 2’ contains the number (and percentage) of RSRZ outliers, followed by percent RSRZ outliers for the chain as percentile scores relative to all X-ray entries and entries of similar resolution. The OWAB column contains the minimum, median, 95th percentile and maximum values of the occupancy-weighted average B-factor per residue. The column labelled ‘Q < 0.9’ lists the number of (and percentage) of residues with an average occupancy less than 0.9.

Mol	Chain	Analysed	<RSRZ>	#RSRZ>2	OWAB(Å ²)	Q<0.9
1	A	334/337 (99%)	0.06	13 (3%) 44 40	26, 42, 67, 88	1 (0%)
1	B	334/337 (99%)	0.23	16 (4%) 36 33	30, 51, 75, 88	0
All	All	668/674 (99%)	0.15	29 (4%) 40 36	26, 46, 73, 88	1 (0%)

All (29) RSRZ outliers are listed below:

Mol	Chain	Res	Type	RSRZ
1	A	215	LEU	6.4
1	B	169	SER	4.4
1	B	252	LEU	4.2
1	A	170	GLN	3.8
1	B	79	LEU	3.4
1	B	290	TYR	3.3
1	A	213[A]	SER	3.1
1	B	165	ASP	3.0
1	A	219	ASP	2.9
1	B	170	GLN	2.8
1	B	74	HIS	2.8
1	B	253	PHE	2.7
1	A	165	ASP	2.7
1	B	217	CYS	2.6
1	B	5	ASN	2.5
1	A	214	THR	2.5
1	B	254	ASP	2.4
1	A	206	LYS	2.4
1	A	156	ASP	2.4
1	B	251	ARG	2.3
1	A	212	SER	2.2
1	B	96	ILE	2.2
1	B	154	LYS	2.2
1	B	206	LYS	2.2

Continued on next page...

Continued from previous page...

Mol	Chain	Res	Type	RSRZ
1	A	166	SER	2.1
1	B	54	LEU	2.1
1	A	7	THR	2.1
1	A	211	GLY	2.0
1	A	148	ILE	2.0

6.2 Non-standard residues in protein, DNA, RNA chains [i](#)

There are no non-standard protein/DNA/RNA residues in this entry.

6.3 Carbohydrates [i](#)

There are no monosaccharides in this entry.

6.4 Ligands [i](#)

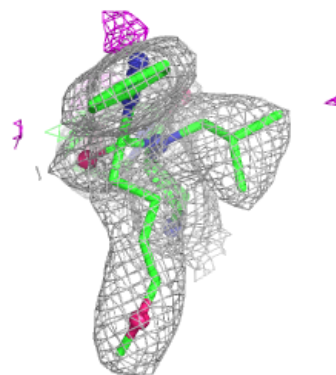
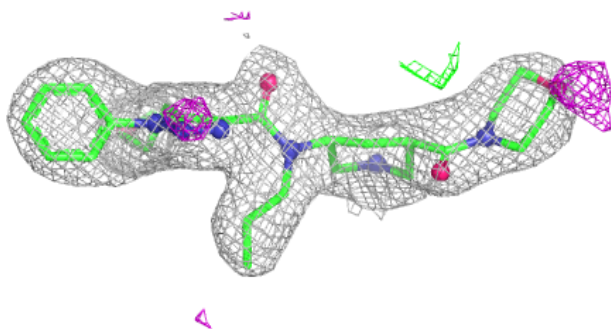
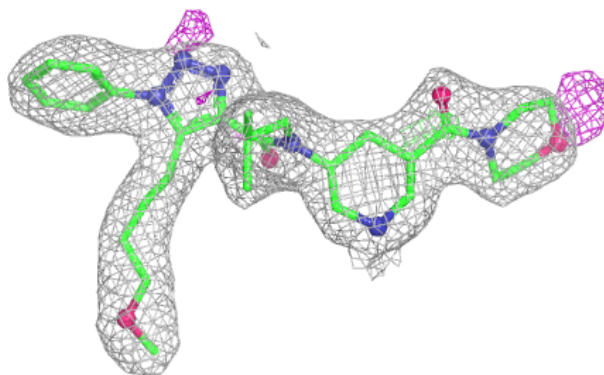
In the following table, the Atoms column lists the number of modelled atoms in the group and the number defined in the chemical component dictionary. The B-factors column lists the minimum, median, 95th percentile and maximum values of B factors of atoms in the group. The column labelled 'Q< 0.9' lists the number of atoms with occupancy less than 0.9.

Mol	Type	Chain	Res	Atoms	RSCC	RSR	B-factors(Å ²)	Q<0.9
2	NAG	B	401	14/15	0.63	0.32	66,71,73,73	14
2	NAG	A	401	14/15	0.76	0.15	52,58,64,65	0
5	PEG	A	404	7/7	0.83	0.23	82,83,85,87	0
6	DMS	A	405	4/4	0.89	0.18	65,68,69,69	0
4	PGE	A	403	10/10	0.90	0.16	59,61,64,64	0
4	PGE	B	403	10/10	0.92	0.11	59,61,63,64	0
3	7EK	B	402	38/38	0.94	0.09	34,39,48,50	0
6	DMS	A	407	4/4	0.94	0.15	63,63,65,67	0
6	DMS	A	406	4/4	0.95	0.15	55,58,59,61	0
3	7EK	A	402	38/38	0.96	0.07	28,30,43,44	0

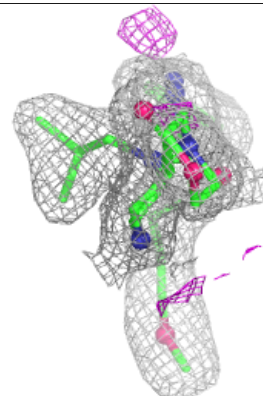
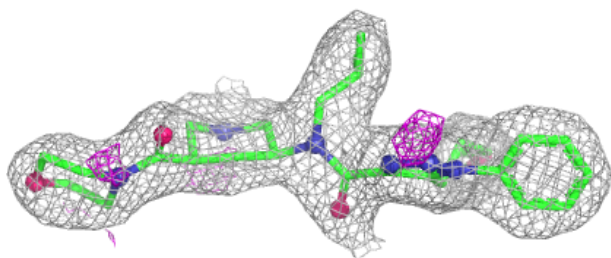
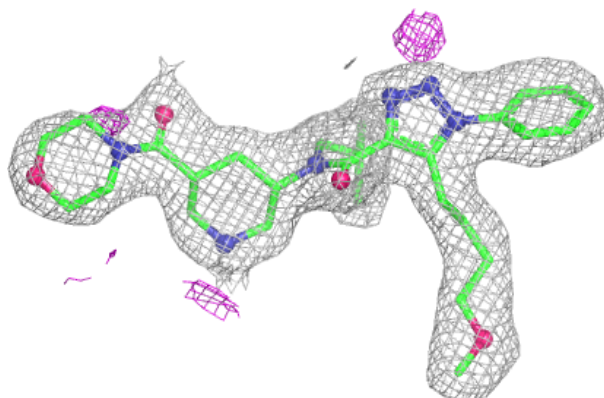
The following is a graphical depiction of the model fit to experimental electron density of all instances of the Ligand of Interest. In addition, ligands with molecular weight > 250 and outliers as shown on the geometry validation Tables will also be included. Each fit is shown from different orientation to approximate a three-dimensional view.

Electron density around 7EK B 402:

$2mF_o-DF_c$ (at 0.7 rmsd) in gray
 mF_o-DF_c (at 3 rmsd) in purple (negative)
and green (positive)

**Electron density around 7EK A 402:**

$2mF_o-DF_c$ (at 0.7 rmsd) in gray
 mF_o-DF_c (at 3 rmsd) in purple (negative)
and green (positive)



6.5 Other polymers [i](#)

There are no such residues in this entry.