



Full wwPDB X-ray Structure Validation Report ⓘ

Nov 1, 2023 – 03:27 PM JST

PDB ID : 5TPS
Title : Structure of a Fc heterodimer
Authors : Zhou, A.; Wei, H.
Deposited on : 2016-10-21
Resolution : 2.70 Å(reported)

This is a Full wwPDB X-ray Structure Validation Report for a publicly released PDB entry.

We welcome your comments at validation@mail.wwpdb.org

A user guide is available at

<https://www.wwpdb.org/validation/2017/XrayValidationReportHelp>

with specific help available everywhere you see the ⓘ symbol.

The types of validation reports are described at

<http://www.wwpdb.org/validation/2017/FAQs#types>.

The following versions of software and data (see [references ⓘ](#)) were used in the production of this report:

MolProbity : 4.02b-467
Mogul : 1.8.5 (274361), CSD as541be (2020)
Xtrriage (Phenix) : 1.13
EDS : 2.36
Percentile statistics : 20191225.v01 (using entries in the PDB archive December 25th 2019)
Refmac : 5.8.0158
CCP4 : 7.0.044 (Gargrove)
Ideal geometry (proteins) : Engh & Huber (2001)
Ideal geometry (DNA, RNA) : Parkinson et al. (1996)
Validation Pipeline (wwPDB-VP) : 2.36

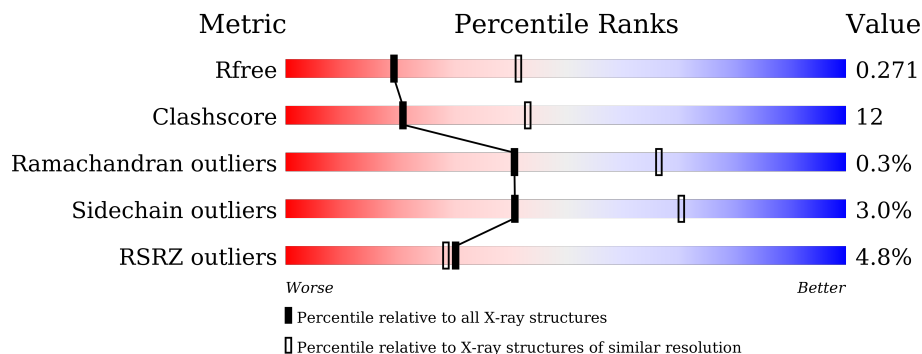
1 Overall quality at a glance

The following experimental techniques were used to determine the structure:

X-RAY DIFFRACTION

The reported resolution of this entry is 2.70 Å.

Percentile scores (ranging between 0-100) for global validation metrics of the entry are shown in the following graphic. The table shows the number of entries on which the scores are based.



Metric	Whole archive (#Entries)	Similar resolution (#Entries, resolution range(Å))
R_{free}	130704	2808 (2.70-2.70)
Clashscore	141614	3122 (2.70-2.70)
Ramachandran outliers	138981	3069 (2.70-2.70)
Sidechain outliers	138945	3069 (2.70-2.70)
RSRZ outliers	127900	2737 (2.70-2.70)

The table below summarises the geometric issues observed across the polymeric chains and their fit to the electron density. The red, orange, yellow and green segments of the lower bar indicate the fraction of residues that contain outliers for ≥ 3 , 2, 1 and 0 types of geometric quality criteria respectively. A grey segment represents the fraction of residues that are not modelled. The numeric value for each fraction is indicated below the corresponding segment, with a dot representing fractions $\leq 5\%$. The upper red bar (where present) indicates the fraction of residues that have poor fit to the electron density. The numeric value is given above the bar.

Mol	Chain	Length	Quality of chain
1	B	243	
2	A	232	
3	C	7	
4	D	9	

2 Entry composition [i](#)

There are 5 unique types of molecules in this entry. The entry contains 3386 atoms, of which 0 are hydrogens and 0 are deuteriums.

In the tables below, the ZeroOcc column contains the number of atoms modelled with zero occupancy, the AltConf column contains the number of residues with at least one atom in alternate conformation and the Trace column contains the number of residues modelled with at most 2 atoms.

- Molecule 1 is a protein called Ig gamma-1 chain C region.

Mol	Chain	Residues	Atoms					ZeroOcc	AltConf	Trace
			Total	C	N	O	S			
1	B	192	1523	963	260	293	7	0	0	0

There are 21 discrepancies between the modelled and reference sequences:

Chain	Residue	Modelled	Actual	Comment	Reference
B	216	GLY	-	expression tag	UNP P01857
B	217	SER	-	expression tag	UNP P01857
B	218	GLY	-	expression tag	UNP P01857
B	219	GLY	-	expression tag	UNP P01857
B	220	GLY	-	expression tag	UNP P01857
B	349	CYS	TYR	engineered mutation	UNP P01857
B	366	SER	THR	engineered mutation	UNP P01857
B	368	ALA	LEU	engineered mutation	UNP P01857
B	405	LYS	PHE	engineered mutation	UNP P01857
B	407	VAL	TYR	engineered mutation	UNP P01857
B	448	GLY	-	expression tag	UNP P01857
B	449	GLY	-	expression tag	UNP P01857
B	450	SER	-	expression tag	UNP P01857
B	451	HIS	-	expression tag	UNP P01857
B	452	HIS	-	expression tag	UNP P01857
B	453	HIS	-	expression tag	UNP P01857
B	454	HIS	-	expression tag	UNP P01857
B	455	HIS	-	expression tag	UNP P01857
B	456	HIS	-	expression tag	UNP P01857
B	457	HIS	-	expression tag	UNP P01857
B	458	HIS	-	expression tag	UNP P01857

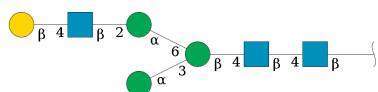
- Molecule 2 is a protein called Ig gamma-1 chain C region.

Mol	Chain	Residues	Atoms					ZeroOcc	AltConf	Trace
			Total	C	N	O	S			
2	A	207	1659	1058	278	316	7	0	0	0

There are 8 discrepancies between the modelled and reference sequences:

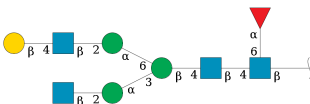
Chain	Residue	Modelled	Actual	Comment	Reference
A	216	GLY	-	expression tag	UNP P01857
A	217	SER	-	expression tag	UNP P01857
A	218	GLY	-	expression tag	UNP P01857
A	219	GLY	-	expression tag	UNP P01857
A	220	GLY	-	expression tag	UNP P01857
A	354	CYS	SER	engineered mutation	UNP P01857
A	366	TRP	THR	engineered mutation	UNP P01857
A	409	ALA	LYS	engineered mutation	UNP P01857

- Molecule 3 is an oligosaccharide called beta-D-galactopyranose-(1-4)-2-acetamido-2-deoxy-beta-D-glucopyranose-(1-2)-alpha-D-mannopyranose-(1-6)-[alpha-D-mannopyranose-(1-3)]beta-D-mannopyranose-(1-4)-2-acetamido-2-deoxy-beta-D-glucopyranose-(1-4)-2-acetamido-2-deoxy-beta-D-glucopyranose.



Mol	Chain	Residues	Atoms				ZeroOcc	AltConf	Trace
			Total	C	N	O			
3	C	7	86	48	3	35	0	0	0

- Molecule 4 is an oligosaccharide called beta-D-galactopyranose-(1-4)-2-acetamido-2-deoxy-beta-D-glucopyranose-(1-2)-alpha-D-mannopyranose-(1-6)-[2-acetamido-2-deoxy-beta-D-glucopyranose-(1-2)-alpha-D-mannopyranose-(1-3)]beta-D-mannopyranose-(1-4)-2-acetamido-2-deoxy-beta-D-glucopyranose-(1-4)-[alpha-L-fucopyranose-(1-6)]2-acetamido-2-deoxy-beta-D-glucopyranose.



Mol	Chain	Residues	Atoms				ZeroOcc	AltConf	Trace
			Total	C	N	O			
4	D	9	110	62	4	44	0	0	0

- Molecule 5 is water.

Mol	Chain	Residues	Atoms	ZeroOcc	AltConf
5	B	1	Total O 1 1	0	0
5	A	7	Total O 7 7	0	0

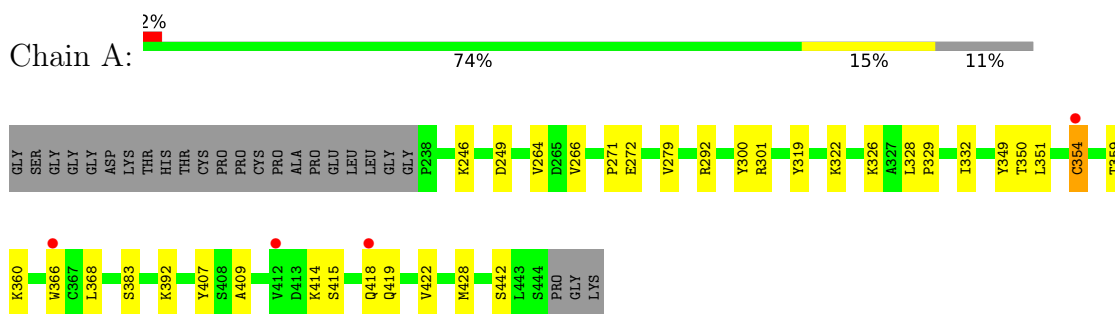
3 Residue-property plots

These plots are drawn for all protein, RNA, DNA and oligosaccharide chains in the entry. The first graphic for a chain summarises the proportions of the various outlier classes displayed in the second graphic. The second graphic shows the sequence view annotated by issues in geometry and electron density. Residues are color-coded according to the number of geometric quality criteria for which they contain at least one outlier: green = 0, yellow = 1, orange = 2 and red = 3 or more. A red dot above a residue indicates a poor fit to the electron density ($RSRZ > 2$). Stretches of 2 or more consecutive residues without any outlier are shown as a green connector. Residues present in the sample, but not in the model, are shown in grey.

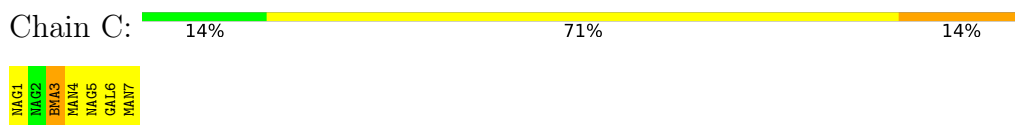
- Molecule 1: Ig gamma-1 chain C region




- Molecule 2: Ig gamma-1 chain C region



- Molecule 3: beta-D-galactopyranose-(1-4)-2-acetamido-2-deoxy-beta-D-glucopyranose-(1-2)-alpha-D-mannopyranose-(1-6)-[alpha-D-mannopyranose-(1-3)]beta-D-mannopyranose-(1-4)-2-acetamido-2-deoxy-beta-D-glucopyranose-(1-4)-2-acetamido-2-deoxy-beta-D-glucopyranose



- Molecule 4: beta-D-galactopyranose-(1-4)-2-acetamido-2-deoxy-beta-D-glucopyranose-(1-2)-alpha-D-mannopyranose-(1-6)-[2-acetamido-2-deoxy-beta-D-glucopyranose-(1-2)-alpha-D-mannopyranose-(1-3)]beta-D-mannopyranose-(1-4)-2-acetamido-2-deoxy-beta-D-glucopyranose-(1-4)-[alpha-L-fucopyranose-(1-6)]2-acetamido-2-deoxy-beta-D-glucopyranose

Chain D:  33% 67%

MAG1
MAG2
BGA3
MAN4
MAG5
GAL6
MAN7
MAG8
FUC9

4 Data and refinement statistics

Property	Value	Source
Space group	P 21 21 21	Depositor
Cell constants a, b, c, α , β , γ	49.26Å 79.52Å 137.98Å 90.00° 90.00° 90.00°	Depositor
Resolution (Å)	46.39 – 2.70 46.39 – 2.70	Depositor EDS
% Data completeness (in resolution range)	98.2 (46.39-2.70) 98.2 (46.39-2.70)	Depositor EDS
R_{merge}	0.11	Depositor
R_{sym}	(Not available)	Depositor
$\langle I/\sigma(I) \rangle$ ¹	2.32 (at 2.69Å)	Xtrriage
Refinement program	PHENIX (1.10.1_2155: ???)	Depositor
R, R_{free}	0.202 , 0.271 0.202 , 0.271	Depositor DCC
R_{free} test set	782 reflections (5.12%)	wwPDB-VP
Wilson B-factor (Å ²)	58.0	Xtrriage
Anisotropy	0.298	Xtrriage
Bulk solvent k_{sol} (e/Å ³), B_{sol} (Å ²)	0.32 , 47.4	EDS
L-test for twinning ²	$\langle L \rangle = 0.46$, $\langle L^2 \rangle = 0.29$	Xtrriage
Estimated twinning fraction	No twinning to report.	Xtrriage
F_o, F_c correlation	0.93	EDS
Total number of atoms	3386	wwPDB-VP
Average B, all atoms (Å ²)	72.0	wwPDB-VP

Xtrriage's analysis on translational NCS is as follows: *The largest off-origin peak in the Patterson function is 6.38% of the height of the origin peak. No significant pseudotranslation is detected.*

¹Intensities estimated from amplitudes.

²Theoretical values of $\langle |L| \rangle$, $\langle L^2 \rangle$ for acentric reflections are 0.5, 0.333 respectively for untwinned datasets, and 0.375, 0.2 for perfectly twinned datasets.

5 Model quality [i](#)

5.1 Standard geometry [i](#)

Bond lengths and bond angles in the following residue types are not validated in this section: NAG, BMA, MAN, FUC, GAL

The Z score for a bond length (or angle) is the number of standard deviations the observed value is removed from the expected value. A bond length (or angle) with $|Z| > 5$ is considered an outlier worth inspection. RMSZ is the root-mean-square of all Z scores of the bond lengths (or angles).

Mol	Chain	Bond lengths		Bond angles	
		RMSZ	# $ Z > 5$	RMSZ	# $ Z > 5$
1	B	0.64	1/1559 (0.1%)	0.81	4/2118 (0.2%)
2	A	0.52	0/1707	0.67	1/2329 (0.0%)
All	All	0.58	1/3266 (0.0%)	0.74	5/4447 (0.1%)

All (1) bond length outliers are listed below:

Mol	Chain	Res	Type	Atoms	Z	Observed(Å)	Ideal(Å)
1	B	363	VAL	CB-CG2	-5.16	1.42	1.52

All (5) bond angle outliers are listed below:

Mol	Chain	Res	Type	Atoms	Z	Observed(°)	Ideal(°)
1	B	295	GLN	CA-CB-CG	-6.62	98.84	113.40
1	B	317	LYS	CD-CE-NZ	-5.68	98.63	111.70
1	B	290	LYS	C-N-CD	5.50	139.96	128.40
1	B	292	ARG	N-CA-C	-5.49	96.17	111.00
2	A	354	CYS	CA-CB-SG	5.43	123.78	114.00

There are no chirality outliers.

There are no planarity outliers.

5.2 Too-close contacts [i](#)

In the following table, the Non-H and H(model) columns list the number of non-hydrogen atoms and hydrogen atoms in the chain respectively. The H(added) column lists the number of hydrogen atoms added and optimized by MolProbity. The Clashes column lists the number of clashes within the asymmetric unit, whereas Symm-Clashes lists symmetry-related clashes.

Mol	Chain	Non-H	H(model)	H(added)	Clashes	Symm-Clashes
1	B	1523	0	1484	62	0
2	A	1659	0	1612	26	0
3	C	86	0	73	2	0
4	D	110	0	94	0	0
5	A	7	0	0	1	0
5	B	1	0	0	0	0
All	All	3386	0	3263	81	0

The all-atom clashscore is defined as the number of clashes found per 1000 atoms (including hydrogen atoms). The all-atom clashscore for this structure is 12.

All (81) close contacts within the same asymmetric unit are listed below, sorted by their clash magnitude.

Atom-1	Atom-2	Interatomic distance (Å)	Clash overlap (Å)
1:B:350:THR:HG21	1:B:441:LEU:HB2	1.62	0.82
1:B:278:TYR:CE1	1:B:322:LYS:HD2	2.16	0.81
1:B:295:GLN:OE1	1:B:299:THR:N	2.15	0.80
1:B:292:ARG:HH22	1:B:300:TYR:HD1	1.27	0.80
2:A:414:LYS:O	2:A:418:GLN:NE2	2.15	0.79
1:B:249:ASP:OD1	1:B:255:ARG:NH1	2.20	0.75
1:B:338:LYS:NZ	1:B:430:GLU:OE1	2.21	0.71
1:B:295:GLN:CD	1:B:297:ASN:OD1	2.29	0.71
1:B:318:GLU:OE2	1:B:335:THR:HG21	1.91	0.70
1:B:276:ASN:HB2	1:B:322:LYS:HD3	1.73	0.70
2:A:383:SER:OG	2:A:422:VAL:O	2.10	0.69
1:B:275:PHE:HZ	1:B:302:VAL:HG12	1.56	0.69
1:B:358:LEU:O	1:B:414:LYS:NZ	2.22	0.68
2:A:414:LYS:HG2	2:A:418:GLN:NE2	2.08	0.68
1:B:339:ALA:HB3	1:B:374:PRO:HB3	1.76	0.67
1:B:295:GLN:NE2	1:B:297:ASN:OD1	2.27	0.66
2:A:428:MET:HG3	5:A:607:HOH:O	1.96	0.65
2:A:414:LYS:HG2	2:A:418:GLN:HE22	1.63	0.62
1:B:292:ARG:NH2	1:B:300:TYR:CD1	2.66	0.62
1:B:274:LYS:NZ	1:B:276:ASN:HD21	1.99	0.60
2:A:271:PRO:O	2:A:292:ARG:NH2	2.35	0.59
1:B:295:GLN:HG2	1:B:299:THR:O	2.03	0.59
1:B:252:MET:HB2	1:B:255:ARG:HG3	1.85	0.58
1:B:276:ASN:HB2	1:B:322:LYS:HZ3	1.69	0.58
1:B:295:GLN:OE1	1:B:297:ASN:OD1	2.22	0.58
2:A:272:GLU:OE1	2:A:326:LYS:NZ	2.31	0.57
1:B:353:PRO:HG3	1:B:363:VAL:HG21	1.87	0.57
1:B:318:GLU:CG	1:B:335:THR:HG21	2.35	0.56

Continued on next page...

Continued from previous page...

Atom-1	Atom-2	Interatomic distance (Å)	Clash overlap (Å)
1:B:343:PRO:HA	1:B:373:TYR:O	2.04	0.56
1:B:350:THR:HG21	1:B:441:LEU:CB	2.32	0.56
1:B:353:PRO:HG3	1:B:363:VAL:CG2	2.35	0.56
1:B:275:PHE:CZ	1:B:302:VAL:HG12	2.40	0.56
1:B:276:ASN:HB2	1:B:322:LYS:CD	2.35	0.55
2:A:359:THR:HG22	2:A:360:LYS:HE2	1.89	0.55
1:B:357:GLU:HG3	2:A:349:TYR:CZ	2.42	0.55
1:B:420:GLY:HA2	1:B:443:LEU:HD21	1.89	0.54
1:B:363:VAL:HG12	1:B:412:VAL:O	2.08	0.54
1:B:443:LEU:O	1:B:444:SER:HB2	2.08	0.53
1:B:351:LEU:HD23	2:A:354:CYS:HB3	1.91	0.53
1:B:243:PHE:CZ	3:C:3:BMA:H62	2.44	0.53
1:B:240:VAL:HG22	1:B:263:VAL:HG22	1.90	0.52
1:B:383:SER:OG	1:B:422:VAL:O	2.22	0.52
1:B:390:ASN:OD1	1:B:411:THR:OG1	2.27	0.52
1:B:420:GLY:HA2	1:B:443:LEU:CD2	2.40	0.52
1:B:385:GLY:O	1:B:386:GLN:NE2	2.43	0.52
2:A:415:SER:O	2:A:419:GLN:OE1	2.28	0.52
1:B:296:TYR:O	1:B:296:TYR:CG	2.64	0.50
1:B:407:VAL:HG11	2:A:407:TYR:CE2	2.47	0.50
1:B:349:CYS:HB3	2:A:354:CYS:SG	2.51	0.50
1:B:280:ASP:OD2	1:B:317:LYS:HD2	2.12	0.50
2:A:422:VAL:HG23	2:A:442:SER:HB2	1.94	0.49
1:B:409:LYS:HD3	2:A:407:TYR:OH	2.12	0.49
1:B:335:THR:HG22	1:B:336:ILE:N	2.28	0.48
2:A:279:VAL:HG12	2:A:319:TYR:CD1	2.50	0.47
1:B:357:GLU:HG3	2:A:349:TYR:CE2	2.50	0.47
1:B:295:GLN:CD	1:B:299:THR:H	2.17	0.47
2:A:266:VAL:HB	2:A:300:TYR:HB2	1.97	0.46
2:A:351:LEU:HB2	2:A:366:TRP:HB2	1.97	0.46
1:B:353:PRO:HD3	1:B:365:LEU:HD23	1.99	0.45
1:B:318:GLU:CG	1:B:335:THR:CG2	2.94	0.45
1:B:276:ASN:HB2	1:B:322:LYS:NZ	2.31	0.45
1:B:275:PHE:HA	1:B:322:LYS:O	2.17	0.45
1:B:308:VAL:HG13	1:B:319:TYR:OH	2.17	0.45
2:A:414:LYS:C	2:A:418:GLN:HE22	2.19	0.45
1:B:278:TYR:CD2	1:B:283:GLU:HA	2.53	0.44
2:A:246:LYS:HB2	2:A:249:ASP:OD1	2.17	0.44
1:B:276:ASN:HB2	1:B:322:LYS:CE	2.48	0.43
1:B:409:LYS:HD2	2:A:368:LEU:HD21	1.99	0.43
2:A:328:LEU:HD13	2:A:332:ILE:HG13	1.99	0.43

Continued on next page...

Continued from previous page...

Atom-1	Atom-2	Interatomic distance (Å)	Clash overlap (Å)
2:A:322:LYS:HE3	2:A:322:LYS:HB2	1.87	0.42
1:B:245:PRO:HD3	1:B:259:VAL:HG12	2.01	0.42
1:B:278:TYR:HD2	1:B:283:GLU:HA	1.85	0.41
2:A:366:TRP:CZ3	2:A:409:ALA:HB2	2.56	0.41
1:B:441:LEU:HG	1:B:442:SER:N	2.35	0.41
1:B:278:TYR:HD2	1:B:283:GLU:CA	2.33	0.41
2:A:264:VAL:HG12	2:A:301:ARG:HG3	2.02	0.41
1:B:274:LYS:HZ1	1:B:276:ASN:HD21	1.68	0.41
1:B:278:TYR:CE1	1:B:322:LYS:CD	2.97	0.41
1:B:353:PRO:HB3	1:B:363:VAL:HG23	2.03	0.41
1:B:278:TYR:CZ	1:B:322:LYS:NZ	2.87	0.40
1:B:243:PHE:CE1	3:C:3:BMA:H62	2.56	0.40

There are no symmetry-related clashes.

5.3 Torsion angles [i](#)

5.3.1 Protein backbone [i](#)

In the following table, the Percentiles column shows the percent Ramachandran outliers of the chain as a percentile score with respect to all X-ray entries followed by that with respect to entries of similar resolution.

The Analysed column shows the number of residues for which the backbone conformation was analysed, and the total number of residues.

Mol	Chain	Analysed	Favoured	Allowed	Outliers	Percentiles	
1	B	186/243 (76%)	180 (97%)	6 (3%)	0	100	100
2	A	205/232 (88%)	202 (98%)	2 (1%)	1 (0%)	29	54
All	All	391/475 (82%)	382 (98%)	8 (2%)	1 (0%)	41	66

All (1) Ramachandran outliers are listed below:

Mol	Chain	Res	Type
2	A	329	PRO

5.3.2 Protein sidechains [i](#)

In the following table, the Percentiles column shows the percent sidechain outliers of the chain as a percentile score with respect to all X-ray entries followed by that with respect to entries of similar resolution.

The Analysed column shows the number of residues for which the sidechain conformation was analysed, and the total number of residues.

Mol	Chain	Analysed	Rotameric	Outliers	Percentiles	
1	B	177/219 (81%)	168 (95%)	9 (5%)	24	50
2	A	192/210 (91%)	190 (99%)	2 (1%)	76	91
All	All	369/429 (86%)	358 (97%)	11 (3%)	41	70

All (11) residues with a non-rotameric sidechain are listed below:

Mol	Chain	Res	Type
1	B	276	ASN
1	B	292	ARG
1	B	337	SER
1	B	360	LYS
1	B	370	LYS
1	B	374	PRO
1	B	399	ASP
1	B	405	LYS
1	B	426	SER
2	A	350	THR
2	A	392	LYS

Sometimes sidechains can be flipped to improve hydrogen bonding and reduce clashes. All (4) such sidechains are listed below:

Mol	Chain	Res	Type
1	B	276	ASN
1	B	386	GLN
2	A	268	HIS
2	A	418	GLN

5.3.3 RNA [i](#)

There are no RNA molecules in this entry.

5.4 Non-standard residues in protein, DNA, RNA chains [i](#)

There are no non-standard protein/DNA/RNA residues in this entry.

5.5 Carbohydrates [i](#)

16 monosaccharides are modelled in this entry.

In the following table, the Counts columns list the number of bonds (or angles) for which Mogul statistics could be retrieved, the number of bonds (or angles) that are observed in the model and the number of bonds (or angles) that are defined in the Chemical Component Dictionary. The Link column lists molecule types, if any, to which the group is linked. The Z score for a bond length (or angle) is the number of standard deviations the observed value is removed from the expected value. A bond length (or angle) with $|Z| > 2$ is considered an outlier worth inspection. RMSZ is the root-mean-square of all Z scores of the bond lengths (or angles).

Mol	Type	Chain	Res	Link	Bond lengths			Bond angles		
					Counts	RMSZ	# Z > 2	Counts	RMSZ	# Z > 2
3	NAG	C	1	1,3	14,14,15	1.34	1 (7%)	17,19,21	1.04	1 (5%)
3	NAG	C	2	3	14,14,15	0.65	0	17,19,21	0.50	0
3	BMA	C	3	3	11,11,12	1.55	2 (18%)	15,15,17	1.15	2 (13%)
3	MAN	C	4	3	11,11,12	1.10	2 (18%)	15,15,17	2.51	3 (20%)
3	NAG	C	5	3	14,14,15	0.44	0	17,19,21	1.35	1 (5%)
3	GAL	C	6	3	11,11,12	1.79	2 (18%)	15,15,17	1.28	2 (13%)
3	MAN	C	7	3	11,11,12	1.61	2 (18%)	15,15,17	1.67	3 (20%)
4	NAG	D	1	4,2	14,14,15	0.22	0	17,19,21	0.48	0
4	NAG	D	2	4	14,14,15	0.82	1 (7%)	17,19,21	0.65	0
4	BMA	D	3	4	11,11,12	1.36	2 (18%)	15,15,17	1.04	1 (6%)
4	MAN	D	4	4	11,11,12	1.28	2 (18%)	15,15,17	2.19	4 (26%)
4	NAG	D	5	4	14,14,15	0.85	1 (7%)	17,19,21	1.30	1 (5%)
4	GAL	D	6	4	11,11,12	1.84	4 (36%)	15,15,17	1.01	1 (6%)
4	MAN	D	7	4	11,11,12	1.31	1 (9%)	15,15,17	1.08	1 (6%)
4	NAG	D	8	4	14,14,15	0.49	0	17,19,21	0.68	0
4	FUC	D	9	4	10,10,11	0.91	0	14,14,16	0.88	0

In the following table, the Chirals column lists the number of chiral outliers, the number of chiral centers analysed, the number of these observed in the model and the number defined in the Chemical Component Dictionary. Similar counts are reported in the Torsion and Rings columns. '-' means no outliers of that kind were identified.

Mol	Type	Chain	Res	Link	Chirals	Torsions	Rings
3	NAG	C	1	1,3	-	0/6/23/26	0/1/1/1

Continued on next page...

Continued from previous page...

Mol	Type	Chain	Res	Link	Chirals	Torsions	Rings
3	NAG	C	2	3	-	0/6/23/26	0/1/1/1
3	BMA	C	3	3	-	2/2/19/22	0/1/1/1
3	MAN	C	4	3	-	0/2/19/22	0/1/1/1
3	NAG	C	5	3	-	2/6/23/26	0/1/1/1
3	GAL	C	6	3	-	2/2/19/22	0/1/1/1
3	MAN	C	7	3	-	1/2/19/22	0/1/1/1
4	NAG	D	1	4,2	-	0/6/23/26	0/1/1/1
4	NAG	D	2	4	-	0/6/23/26	0/1/1/1
4	BMA	D	3	4	-	0/2/19/22	0/1/1/1
4	MAN	D	4	4	-	0/2/19/22	0/1/1/1
4	NAG	D	5	4	-	1/6/23/26	0/1/1/1
4	GAL	D	6	4	-	1/2/19/22	0/1/1/1
4	MAN	D	7	4	-	1/2/19/22	0/1/1/1
4	NAG	D	8	4	-	0/6/23/26	0/1/1/1
4	FUC	D	9	4	-	-	0/1/1/1

All (20) bond length outliers are listed below:

Mol	Chain	Res	Type	Atoms	Z	Observed(Å)	Ideal(Å)
3	C	1	NAG	C1-C2	4.20	1.58	1.52
3	C	6	GAL	C2-C3	4.08	1.58	1.52
3	C	7	MAN	C1-C2	3.93	1.61	1.52
4	D	6	GAL	O5-C1	-3.78	1.37	1.43
3	C	6	GAL	C1-C2	3.58	1.60	1.52
3	C	3	BMA	C1-C2	3.48	1.60	1.52
4	D	3	BMA	O5-C1	-3.33	1.38	1.43
4	D	5	NAG	O5-C1	-3.08	1.38	1.43
4	D	2	NAG	O5-C1	-2.94	1.39	1.43
4	D	7	MAN	O2-C2	-2.51	1.38	1.43
3	C	7	MAN	C2-C3	2.41	1.56	1.52
4	D	6	GAL	O2-C2	2.40	1.48	1.43
3	C	4	MAN	O5-C5	2.38	1.48	1.43
3	C	4	MAN	C1-C2	2.24	1.57	1.52
4	D	4	MAN	O2-C2	-2.23	1.38	1.43
4	D	4	MAN	O5-C5	2.15	1.47	1.43
3	C	3	BMA	C2-C3	2.12	1.55	1.52
4	D	6	GAL	C1-C2	2.11	1.57	1.52
4	D	6	GAL	C4-C3	2.09	1.57	1.52
4	D	3	BMA	C1-C2	2.01	1.56	1.52

All (20) bond angle outliers are listed below:

Mol	Chain	Res	Type	Atoms	Z	Observed(°)	Ideal(°)
4	D	4	MAN	C1-O5-C5	6.86	121.48	112.19
3	C	4	MAN	C1-O5-C5	6.28	120.70	112.19
3	C	4	MAN	O2-C2-C3	-5.92	98.29	110.14
4	D	5	NAG	C1-O5-C5	4.49	118.28	112.19
3	C	5	NAG	C1-O5-C5	3.80	117.34	112.19
3	C	7	MAN	C1-C2-C3	3.56	114.04	109.67
3	C	1	NAG	C4-C3-C2	2.89	115.25	111.02
3	C	4	MAN	C1-C2-C3	2.88	113.20	109.67
3	C	7	MAN	O2-C2-C3	-2.79	104.55	110.14
3	C	6	GAL	C1-C2-C3	2.74	113.03	109.67
4	D	4	MAN	O5-C1-C2	2.72	114.97	110.77
3	C	7	MAN	C1-O5-C5	2.42	115.47	112.19
3	C	6	GAL	O3-C3-C2	2.37	114.53	109.99
4	D	6	GAL	C1-C2-C3	2.29	112.48	109.67
4	D	4	MAN	O2-C2-C3	-2.28	105.57	110.14
3	C	3	BMA	O3-C3-C2	2.19	114.18	109.99
4	D	4	MAN	C1-C2-C3	2.13	112.28	109.67
4	D	3	BMA	C1-O5-C5	2.12	115.06	112.19
4	D	7	MAN	O2-C2-C1	-2.07	104.92	109.15
3	C	3	BMA	C1-O5-C5	2.04	114.96	112.19

There are no chirality outliers.

All (10) torsion outliers are listed below:

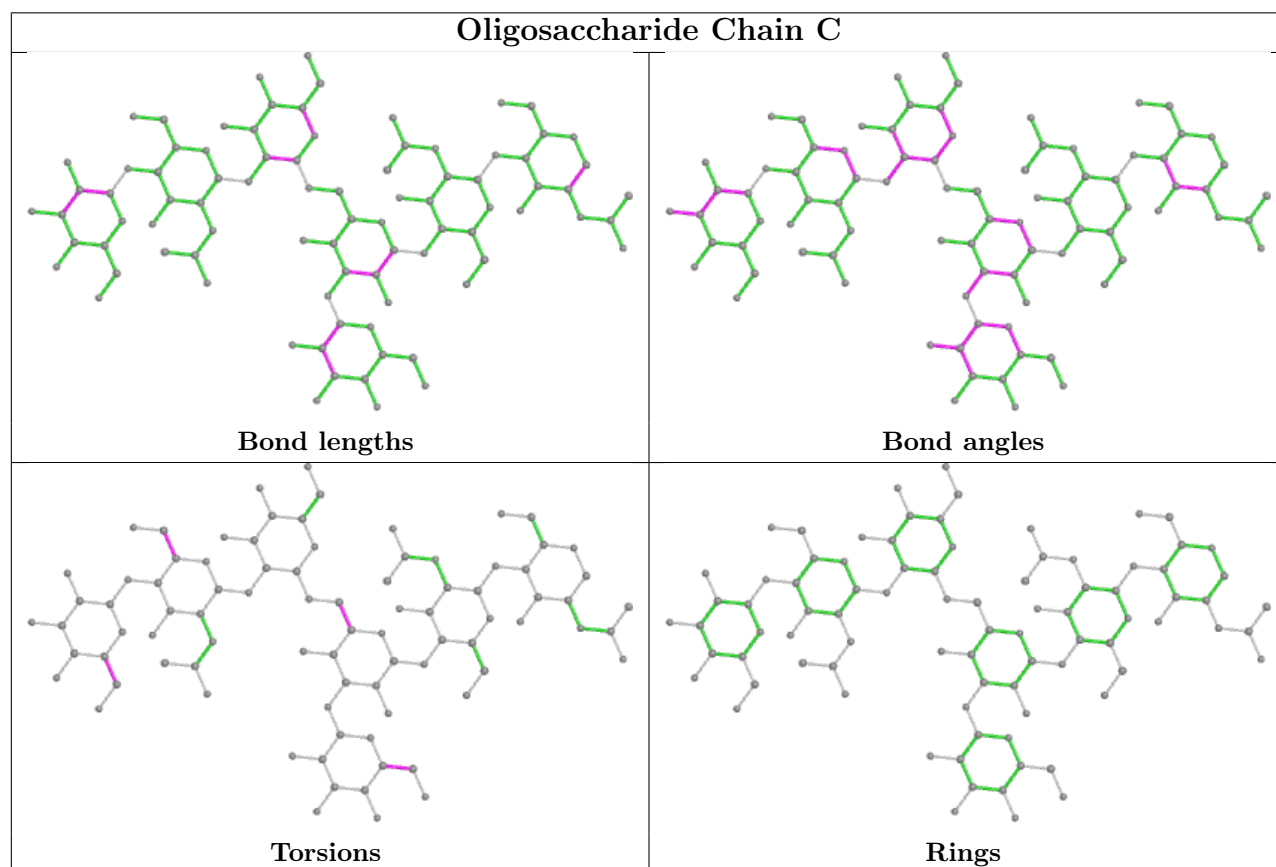
Mol	Chain	Res	Type	Atoms
3	C	3	BMA	O5-C5-C6-O6
3	C	6	GAL	O5-C5-C6-O6
3	C	3	BMA	C4-C5-C6-O6
3	C	6	GAL	C4-C5-C6-O6
3	C	7	MAN	O5-C5-C6-O6
3	C	5	NAG	C4-C5-C6-O6
3	C	5	NAG	O5-C5-C6-O6
4	D	6	GAL	O5-C5-C6-O6
4	D	7	MAN	C4-C5-C6-O6
4	D	5	NAG	O5-C5-C6-O6

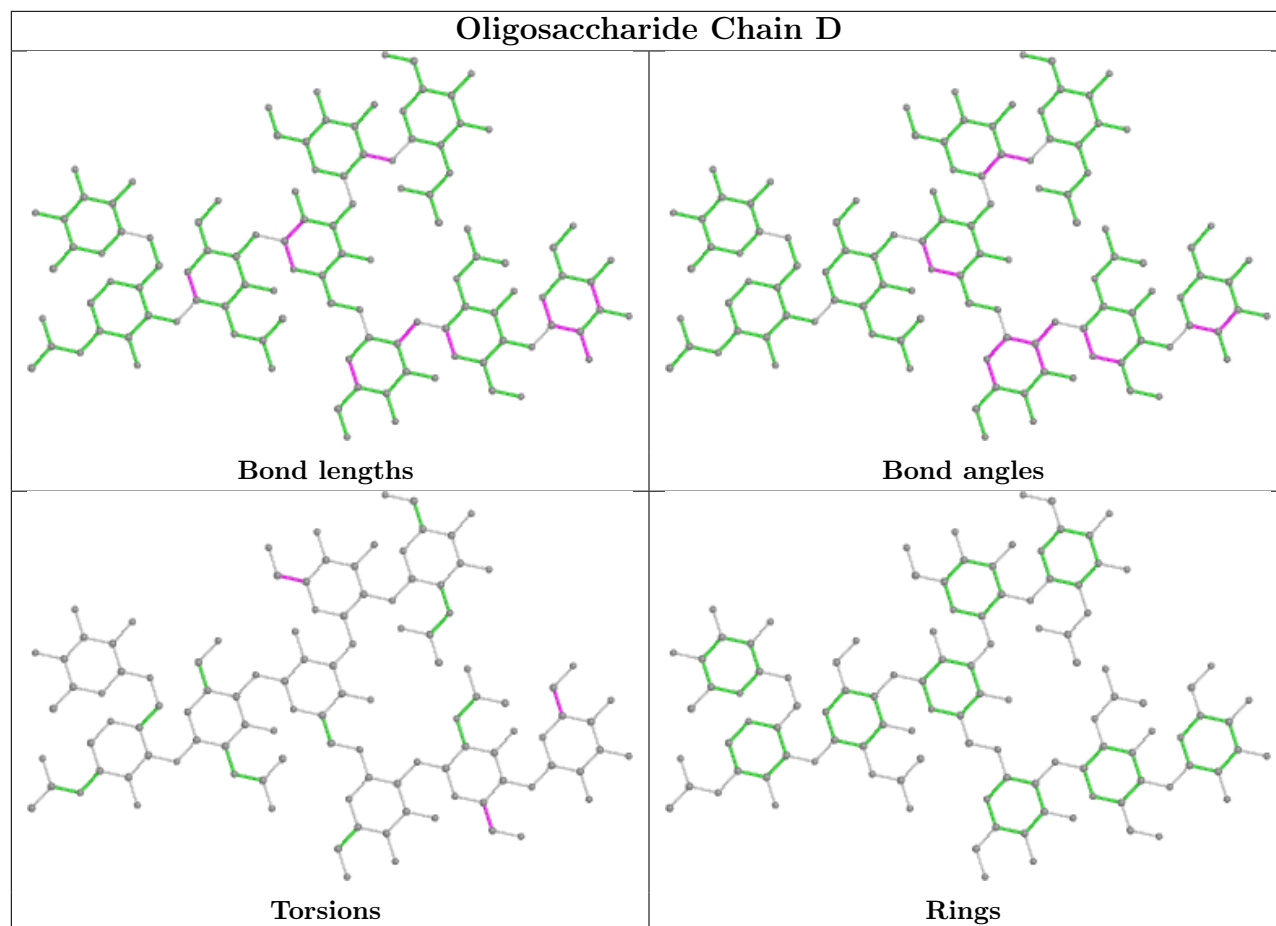
There are no ring outliers.

1 monomer is involved in 2 short contacts:

Mol	Chain	Res	Type	Clashes	Symm-Clashes
3	C	3	BMA	2	0

The following is a two-dimensional graphical depiction of Mogul quality analysis of bond lengths, bond angles, torsion angles, and ring geometry for oligosaccharide.





5.6 Ligand geometry [i](#)

There are no ligands in this entry.

5.7 Other polymers [i](#)

There are no such residues in this entry.

5.8 Polymer linkage issues [i](#)

There are no chain breaks in this entry.

6 Fit of model and data [i](#)

6.1 Protein, DNA and RNA chains [i](#)

In the following table, the column labelled ‘#RSRZ > 2’ contains the number (and percentage) of RSRZ outliers, followed by percent RSRZ outliers for the chain as percentile scores relative to all X-ray entries and entries of similar resolution. The OWAB column contains the minimum, median, 95th percentile and maximum values of the occupancy-weighted average B-factor per residue. The column labelled ‘Q < 0.9’ lists the number of (and percentage) of residues with an average occupancy less than 0.9.

Mol	Chain	Analysed	<RSRZ>	#RSRZ>2	OWAB(Å ²)	Q<0.9
1	B	192/243 (79%)	0.53	15 (7%) 13 11	40, 77, 136, 176	0
2	A	207/232 (89%)	0.06	4 (1%) 66 69	31, 56, 117, 142	0
All	All	399/475 (84%)	0.29	19 (4%) 30 28	31, 66, 127, 176	0

All (19) RSRZ outliers are listed below:

Mol	Chain	Res	Type	RSRZ
1	B	300	TYR	9.1
1	B	302	VAL	4.9
1	B	298	SER	4.2
1	B	281	GLY	4.2
1	B	294	GLU	3.8
1	B	239	SER	3.6
1	B	299	THR	3.5
1	B	291	PRO	3.2
2	A	354	CYS	2.8
2	A	412	VAL	2.6
1	B	278	TYR	2.5
1	B	323	VAL	2.5
1	B	325	ASN	2.5
2	A	366	TRP	2.4
2	A	418	GLN	2.4
1	B	280	ASP	2.3
1	B	418	GLN	2.3
1	B	296	TYR	2.2
1	B	274	LYS	2.0

6.2 Non-standard residues in protein, DNA, RNA chains [i](#)

There are no non-standard protein/DNA/RNA residues in this entry.

6.3 Carbohydrates [i](#)

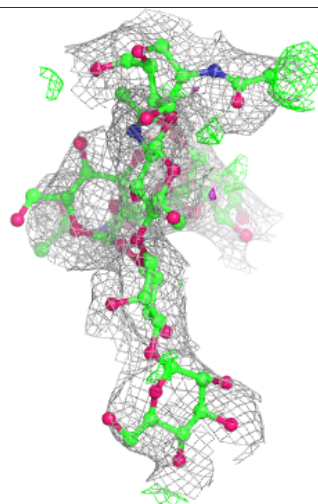
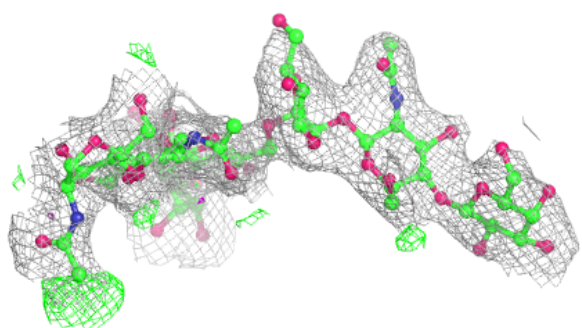
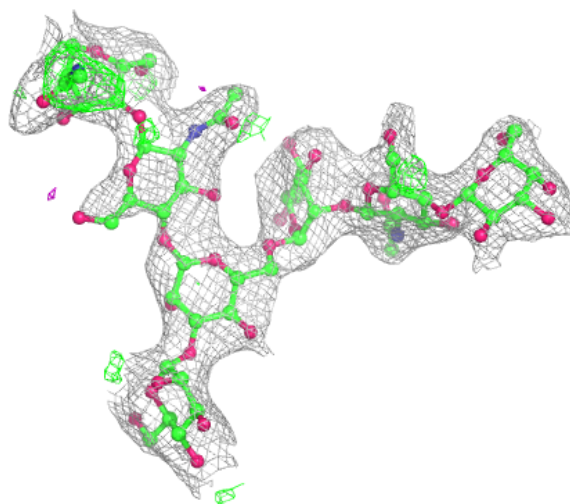
In the following table, the Atoms column lists the number of modelled atoms in the group and the number defined in the chemical component dictionary. The B-factors column lists the minimum, median, 95th percentile and maximum values of B factors of atoms in the group. The column labelled 'Q<0.9' lists the number of atoms with occupancy less than 0.9.

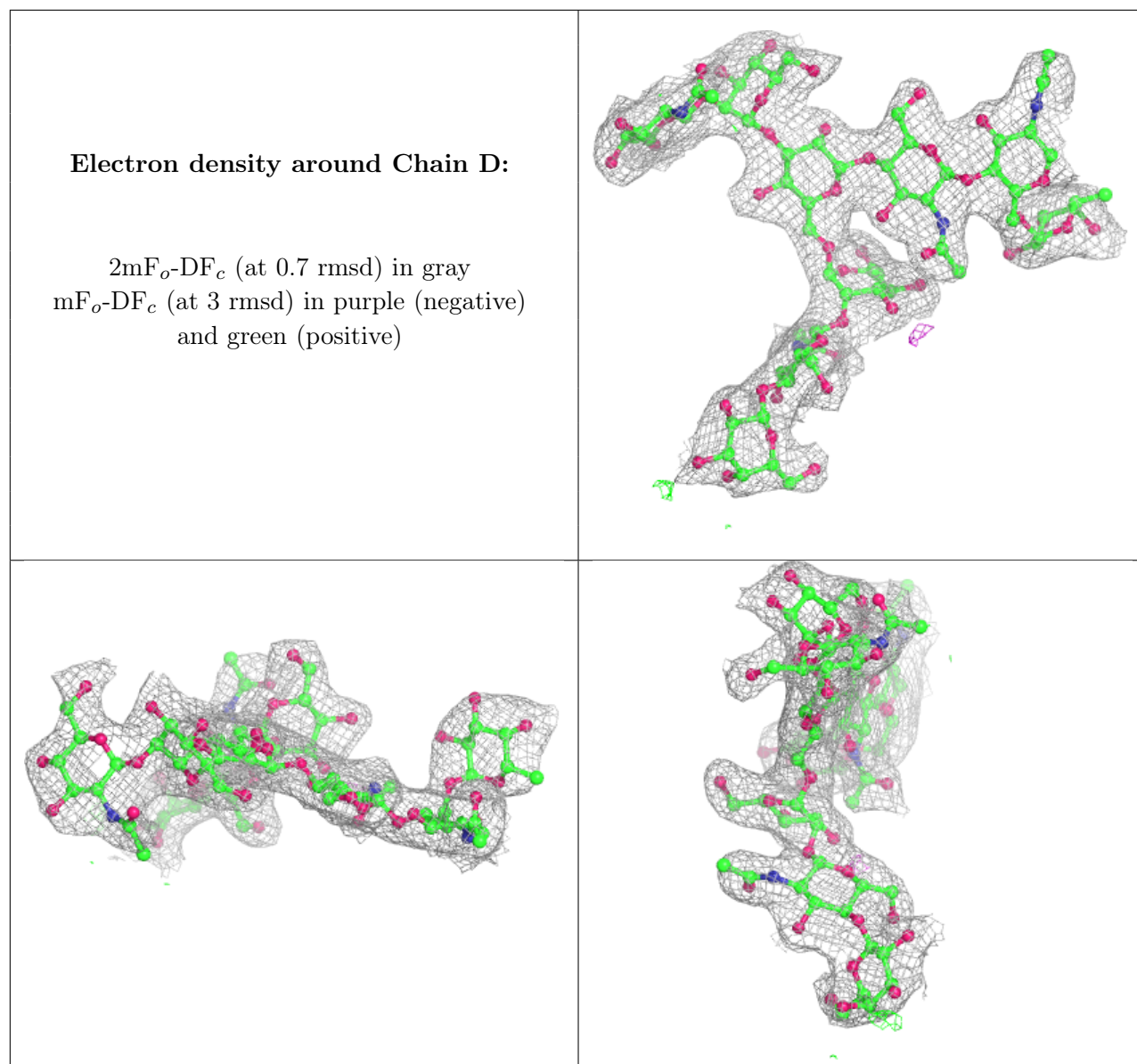
Mol	Type	Chain	Res	Atoms	RSCC	RSR	B-factors(Å ²)	Q<0.9
3	NAG	C	1	14/15	0.61	0.20	75,98,112,114	0
3	NAG	C	2	14/15	0.83	0.26	84,111,119,120	0
3	BMA	C	3	11/12	0.84	0.14	86,97,104,108	0
3	MAN	C	7	11/12	0.84	0.17	77,90,100,104	0
4	NAG	D	8	14/15	0.88	0.16	78,92,101,107	0
3	GAL	C	6	11/12	0.90	0.25	69,82,90,94	0
3	MAN	C	4	11/12	0.91	0.16	80,88,100,106	0
3	NAG	C	5	14/15	0.92	0.15	69,80,87,91	0
4	MAN	D	7	11/12	0.95	0.11	62,68,73,82	0
4	GAL	D	6	11/12	0.95	0.19	52,62,77,79	0
4	FUC	D	9	10/11	0.95	0.15	61,75,84,85	0
4	NAG	D	2	14/15	0.96	0.15	49,57,61,61	0
4	MAN	D	4	11/12	0.96	0.12	51,58,69,69	0
4	NAG	D	1	14/15	0.97	0.12	48,56,64,65	0
4	NAG	D	5	14/15	0.97	0.13	45,54,70,71	0
4	BMA	D	3	11/12	0.97	0.13	37,51,63,70	0

The following is a graphical depiction of the model fit to experimental electron density for oligosaccharide. Each fit is shown from different orientation to approximate a three-dimensional view.

Electron density around Chain C:

$2mF_o-DF_c$ (at 0.7 rmsd) in gray
 mF_o-DF_c (at 3 rmsd) in purple (negative)
and green (positive)





6.4 Ligands [i](#)

There are no ligands in this entry.

6.5 Other polymers [i](#)

There are no such residues in this entry.