



# Full wwPDB X-ray Structure Validation Report

Jun 26, 2024 – 01:52 AM EDT

PDB ID : 6TPF  
Title : Fragment-based discovery of pyrazolopyridones as JAK1 inhibitors with excellent subtype selectivity  
Authors : Hansen, B.B.; Jepsen, T.H.; Larsen, M.; Sindet, R.; Vifian, T.; Burhardt, M.N.; Larsen, J.; Seitzberg, J.G.; Carnerup, M.A.; Jerre, A.; Molck, C.; Rai, S.; Nasipireddy, V.R.; Griessner, A.; Ritzen, A.  
Deposited on : 2019-12-13  
Resolution : 2.31 Å(reported)

This is a Full wwPDB X-ray Structure Validation Report for a publicly released PDB entry.

We welcome your comments at [validation@mail.wwpdb.org](mailto:validation@mail.wwpdb.org)

A user guide is available at

<https://www.wwpdb.org/validation/2017/XrayValidationReportHelp>

with specific help available everywhere you see the  symbol.

The types of validation reports are described at

<http://www.wwpdb.org/validation/2017/FAQs#types>.

---

The following versions of software and data (see [references](#) ①) were used in the production of this report:

MolProbity : 4.02b-467  
Mogul : 1.8.5 (274361), CSD as541be (2020)  
Xtrriage (Phenix) : 1.13  
EDS : 2.37.1  
buster-report : 1.1.7 (2018)  
Percentile statistics : 20191225.v01 (using entries in the PDB archive December 25th 2019)  
Refmac : 5.8.0158  
CCP4 : 7.0.044 (Gargrove)  
Ideal geometry (proteins) : Engh & Huber (2001)  
Ideal geometry (DNA, RNA) : Parkinson et al. (1996)  
Validation Pipeline (wwPDB-VP) : 2.37.1

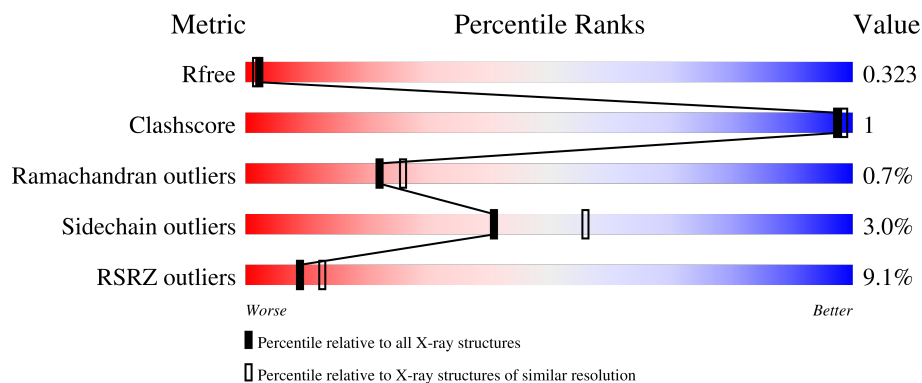
# 1 Overall quality at a glance i

The following experimental techniques were used to determine the structure:

*X-RAY DIFFRACTION*

The reported resolution of this entry is 2.31 Å.

Percentile scores (ranging between 0-100) for global validation metrics of the entry are shown in the following graphic. The table shows the number of entries on which the scores are based.



Metric	Whole archive (#Entries)	Similar resolution (#Entries, resolution range(Å))
$R_{free}$	130704	5974 (2.34-2.30)
Clashscore	141614	6604 (2.34-2.30)
Ramachandran outliers	138981	6523 (2.34-2.30)
Sidechain outliers	138945	6523 (2.34-2.30)
RSRZ outliers	127900	5855 (2.34-2.30)

The table below summarises the geometric issues observed across the polymeric chains and their fit to the electron density. The red, orange, yellow and green segments of the lower bar indicate the fraction of residues that contain outliers for  $\geq 3$ , 2, 1 and 0 types of geometric quality criteria respectively. A grey segment represents the fraction of residues that are not modelled. The numeric value for each fraction is indicated below the corresponding segment, with a dot representing fractions  $\leq 5\%$ . The upper red bar (where present) indicates the fraction of residues that have poor fit to the electron density. The numeric value is given above the bar.

Mol	Chain	Length	Quality of chain
1	A	291	
1	B	291	

## 2 Entry composition [i](#)

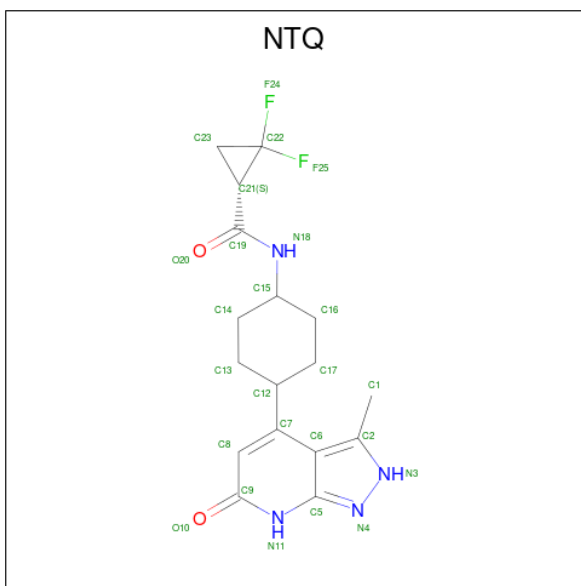
There are 3 unique types of molecules in this entry. The entry contains 4741 atoms, of which 0 are hydrogens and 0 are deuteriums.

In the tables below, the ZeroOcc column contains the number of atoms modelled with zero occupancy, the AltConf column contains the number of residues with at least one atom in alternate conformation and the Trace column contains the number of residues modelled with at most 2 atoms.

- Molecule 1 is a protein called Tyrosine-protein kinase JAK1.

Mol	Chain	Residues	Atoms					ZeroOcc	AltConf	Trace	
			Total	C	N	O	P				S
1	A	288	Total 2351	C 1493	N 398	O 443	P 2	S 15	41	4	0
1	B	278	Total 2269	C 1448	N 384	O 420	P 2	S 15	90	0	0

- Molecule 2 is (1 {S})-2,2-bis(fluoranyl)- {N}-[4-(3-methyl-6-oxidanylidene-2,7-dihydropyr azolo[3,4-b]pyridin-4-yl)cyclohexyl]cyclopropane-1-carboxamide (three-letter code: NTQ) (formula: C<sub>17</sub>H<sub>20</sub>F<sub>2</sub>N<sub>4</sub>O<sub>2</sub>) (labeled as "Ligand of Interest" by depositor).



Mol	Chain	Residues	Atoms				ZeroOcc	AltConf	
			Total	C	F	N			O
2	A	1	Total 25	C 17	F 2	N 4	O 2	0	0
2	B	1	Total 25	C 17	F 2	N 4	O 2	0	0

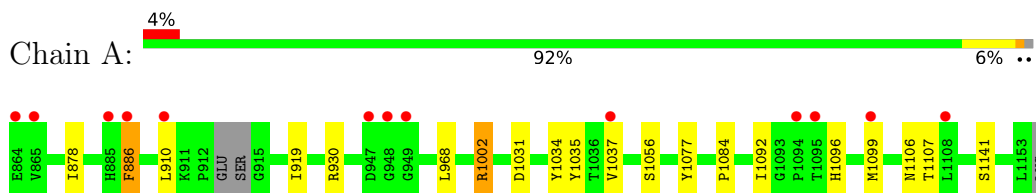
- Molecule 3 is water.

Mol	Chain	Residues	Atoms		ZeroOcc	AltConf
3	A	56	Total 56	O 56	0	0
3	B	15	Total 15	O 15	0	0

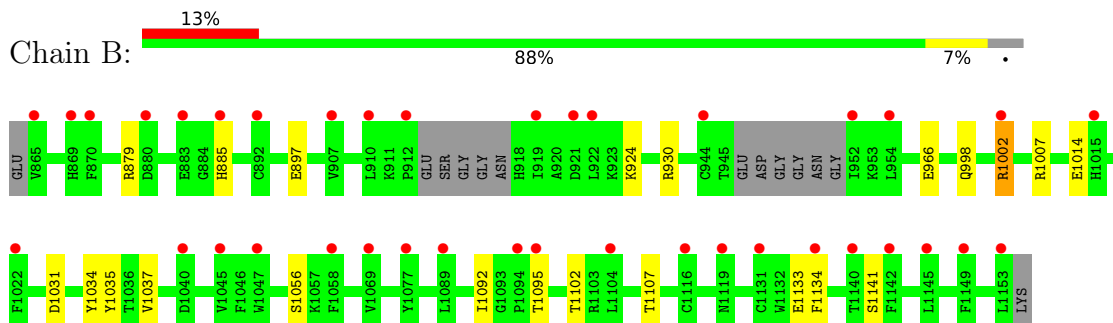
### 3 Residue-property plots [i](#)

These plots are drawn for all protein, RNA, DNA and oligosaccharide chains in the entry. The first graphic for a chain summarises the proportions of the various outlier classes displayed in the second graphic. The second graphic shows the sequence view annotated by issues in geometry and electron density. Residues are color-coded according to the number of geometric quality criteria for which they contain at least one outlier: green = 0, yellow = 1, orange = 2 and red = 3 or more. A red dot above a residue indicates a poor fit to the electron density ( $RSRZ > 2$ ). Stretches of 2 or more consecutive residues without any outlier are shown as a green connector. Residues present in the sample, but not in the model, are shown in grey.

- Molecule 1: Tyrosine-protein kinase JAK1



- Molecule 1: Tyrosine-protein kinase JAK1



## 4 Data and refinement statistics

Property	Value	Source
Space group	P 1 21 1	Depositor
Cell constants a, b, c, $\alpha$ , $\beta$ , $\gamma$	42.73Å 171.20Å 44.33Å 90.00° 91.84° 90.00°	Depositor
Resolution (Å)	85.60 – 2.31 44.31 – 2.31	Depositor EDS
% Data completeness (in resolution range)	95.2 (85.60-2.31) 86.6 (44.31-2.31)	Depositor EDS
$R_{merge}$	0.06	Depositor
$R_{sym}$	(Not available)	Depositor
$\langle I/\sigma(I) \rangle$ <sup>1</sup>	1.77 (at 2.32Å)	Xtriage
Refinement program	REFMAC 5.8.0155	Depositor
R, $R_{free}$	0.263 , 0.327 0.265 , 0.323	Depositor DCC
$R_{free}$ test set	1176 reflections (4.44%)	wwPDB-VP
Wilson B-factor (Å <sup>2</sup> )	45.0	Xtriage
Anisotropy	0.255	Xtriage
Bulk solvent $k_{sol}$ (e/Å <sup>3</sup> ), $B_{sol}$ (Å <sup>2</sup> )	0.30 , 30.6	EDS
L-test for twinning <sup>2</sup>	$\langle  L  \rangle = 0.47$ , $\langle L^2 \rangle = 0.30$	Xtriage
Estimated twinning fraction	0.000 for l,k,-h 0.210 for h,-k,-l 0.036 for l,-k,h	Xtriage
$F_o, F_c$ correlation	0.93	EDS
Total number of atoms	4741	wwPDB-VP
Average B, all atoms (Å <sup>2</sup> )	65.0	wwPDB-VP

Xtriage's analysis on translational NCS is as follows: *The largest off-origin peak in the Patterson function is 7.42% of the height of the origin peak. No significant pseudotranslation is detected.*

<sup>1</sup>Intensities estimated from amplitudes.

<sup>2</sup>Theoretical values of  $\langle |L| \rangle$ ,  $\langle L^2 \rangle$  for acentric reflections are 0.5, 0.333 respectively for untwinned datasets, and 0.375, 0.2 for perfectly twinned datasets.

## 5 Model quality [i](#)

### 5.1 Standard geometry [i](#)

Bond lengths and bond angles in the following residue types are not validated in this section: NTQ, PTR

The Z score for a bond length (or angle) is the number of standard deviations the observed value is removed from the expected value. A bond length (or angle) with  $|Z| > 5$  is considered an outlier worth inspection. RMSZ is the root-mean-square of all Z scores of the bond lengths (or angles).

Mol	Chain	Bond lengths		Bond angles	
		RMSZ	# $ Z  > 5$	RMSZ	# $ Z  > 5$
1	A	0.71	0/2380	0.85	3/3205 (0.1%)
1	B	0.68	1/2284 (0.0%)	0.86	5/3075 (0.2%)
All	All	0.70	1/4664 (0.0%)	0.85	8/6280 (0.1%)

All (1) bond length outliers are listed below:

Mol	Chain	Res	Type	Atoms	Z	Observed(Å)	Ideal(Å)
1	B	966	GLU	CB-CG	-5.67	1.41	1.52

All (8) bond angle outliers are listed below:

Mol	Chain	Res	Type	Atoms	Z	Observed(°)	Ideal(°)
1	A	1002	ARG	NE-CZ-NH1	6.40	123.50	120.30
1	B	1002	ARG	NE-CZ-NH1	6.21	123.40	120.30
1	B	1007	ARG	NE-CZ-NH1	6.09	123.34	120.30
1	A	930	ARG	NE-CZ-NH1	5.47	123.03	120.30
1	B	930	ARG	NE-CZ-NH1	5.39	123.00	120.30
1	A	1002	ARG	NE-CZ-NH2	-5.26	117.67	120.30
1	B	879	ARG	NE-CZ-NH1	5.18	122.89	120.30
1	B	1002	ARG	NE-CZ-NH2	-5.16	117.72	120.30

There are no chirality outliers.

There are no planarity outliers.

### 5.2 Too-close contacts [i](#)

In the following table, the Non-H and H(model) columns list the number of non-hydrogen atoms and hydrogen atoms in the chain respectively. The H(added) column lists the number of hydrogen atoms added and optimized by MolProbity. The Clashes column lists the number of clashes within



the asymmetric unit, whereas Symm-Clashes lists symmetry-related clashes.

Mol	Chain	Non-H	H(model)	H(added)	Clashes	Symm-Clashes
1	A	2351	0	2328	4	1
1	B	2269	0	2264	3	0
2	A	25	0	0	0	0
2	B	25	0	0	0	0
3	A	56	0	0	0	0
3	B	15	0	0	1	0
All	All	4741	0	4592	7	1

The all-atom clashscore is defined as the number of clashes found per 1000 atoms (including hydrogen atoms). The all-atom clashscore for this structure is 1.

All (7) close contacts within the same asymmetric unit are listed below, sorted by their clash magnitude.

Atom-1	Atom-2	Interatomic distance (Å)	Clash overlap (Å)
1:B:1141:SER:OG	3:B:1301:HOH:O	2.16	0.61
1:A:1092:ILE:HG22	1:A:1107:THR:HG21	1.97	0.45
1:B:1092:ILE:HG22	1:B:1107:THR:HG21	1.99	0.44
1:A:968:LEU:HD13	1:A:1077:TYR:HA	1.99	0.42
1:B:1002:ARG:NH2	1:B:1037:VAL:HG21	2.35	0.42
1:A:1002:ARG:NH2	1:A:1037:VAL:HG21	2.35	0.41
1:A:910:LEU:HD11	1:A:919:ILE:HA	2.03	0.40

All (1) symmetry-related close contacts are listed below. The label for Atom-2 includes the symmetry operator and encoded unit-cell translations to be applied.

Atom-1	Atom-2	Interatomic distance (Å)	Clash overlap (Å)
1:A:878:ILE:O	1:A:1141:SER:OG[1_554]	2.14	0.06

## 5.3 Torsion angles [i](#)

### 5.3.1 Protein backbone [i](#)

In the following table, the Percentiles column shows the percent Ramachandran outliers of the chain as a percentile score with respect to all X-ray entries followed by that with respect to entries of similar resolution.

The Analysed column shows the number of residues for which the backbone conformation was analysed, and the total number of residues.

Mol	Chain	Analysed	Favoured	Allowed	Outliers	Percentiles	
1	A	286/291 (98%)	273 (96%)	12 (4%)	1 (0%)	41	50
1	B	270/291 (93%)	256 (95%)	11 (4%)	3 (1%)	14	15
All	All	556/582 (96%)	529 (95%)	23 (4%)	4 (1%)	22	26

All (4) Ramachandran outliers are listed below:

Mol	Chain	Res	Type
1	B	1095	THR
1	A	886	PHE
1	B	1133	GLU
1	B	1134	PHE

### 5.3.2 Protein sidechains [i](#)

In the following table, the Percentiles column shows the percent sidechain outliers of the chain as a percentile score with respect to all X-ray entries followed by that with respect to entries of similar resolution.

The Analysed column shows the number of residues for which the sidechain conformation was analysed, and the total number of residues.

Mol	Chain	Analysed	Rotameric	Outliers	Percentiles	
1	A	259/258 (100%)	252 (97%)	7 (3%)	44	60
1	B	250/258 (97%)	242 (97%)	8 (3%)	39	53
All	All	509/516 (99%)	494 (97%)	15 (3%)	41	57

All (15) residues with a non-rotameric sidechain are listed below:

Mol	Chain	Res	Type
1	A	886	PHE
1	A	1031	ASP
1	A	1056	SER
1	A	1084	PRO
1	A	1096	HIS
1	A	1099	MET
1	A	1106	ASN
1	B	885	HIS
1	B	897	GLU
1	B	924	LYS
1	B	998	GLN
1	B	1014	GLU

*Continued on next page...*

*Continued from previous page...*

Mol	Chain	Res	Type
1	B	1031	ASP
1	B	1056	SER
1	B	1102	THR

Sometimes sidechains can be flipped to improve hydrogen bonding and reduce clashes. There are no such sidechains identified.

### 5.3.3 RNA [i](#)

There are no RNA molecules in this entry.

## 5.4 Non-standard residues in protein, DNA, RNA chains [i](#)

4 non-standard protein/DNA/RNA residues are modelled in this entry.

In the following table, the Counts columns list the number of bonds (or angles) for which Mogul statistics could be retrieved, the number of bonds (or angles) that are observed in the model and the number of bonds (or angles) that are defined in the Chemical Component Dictionary. The Link column lists molecule types, if any, to which the group is linked. The Z score for a bond length (or angle) is the number of standard deviations the observed value is removed from the expected value. A bond length (or angle) with  $|Z| > 2$  is considered an outlier worth inspection. RMSZ is the root-mean-square of all Z scores of the bond lengths (or angles).

Mol	Type	Chain	Res	Link	Bond lengths			Bond angles		
					Counts	RMSZ	# Z  > 2	Counts	RMSZ	# Z  > 2
1	PTR	B	1035	1	15,16,17	1.06	2 (13%)	19,22,24	1.15	0
1	PTR	A	1035	1	15,16,17	0.98	1 (6%)	19,22,24	1.07	0
1	PTR	B	1034	1	15,16,17	1.22	1 (6%)	19,22,24	0.98	0
1	PTR	A	1034	1	15,16,17	0.96	0	19,22,24	0.87	1 (5%)

In the following table, the Chirals column lists the number of chiral outliers, the number of chiral centers analysed, the number of these observed in the model and the number defined in the Chemical Component Dictionary. Similar counts are reported in the Torsion and Rings columns. '-' means no outliers of that kind were identified.

Mol	Type	Chain	Res	Link	Chirals	Torsions	Rings
1	PTR	B	1035	1	-	0/10/11/13	0/1/1/1
1	PTR	A	1035	1	-	0/10/11/13	0/1/1/1
1	PTR	B	1034	1	-	0/10/11/13	0/1/1/1
1	PTR	A	1034	1	-	2/10/11/13	0/1/1/1

All (4) bond length outliers are listed below:

Mol	Chain	Res	Type	Atoms	Z	Observed(Å)	Ideal(Å)
1	B	1034	PTR	P-OH	2.51	1.63	1.59
1	A	1035	PTR	CE2-CZ	2.16	1.43	1.38
1	B	1035	PTR	CE2-CZ	2.06	1.42	1.38
1	B	1035	PTR	P-OH	2.03	1.62	1.59

All (1) bond angle outliers are listed below:

Mol	Chain	Res	Type	Atoms	Z	Observed(°)	Ideal(°)
1	A	1034	PTR	O2P-P-OH	-2.37	97.83	105.24

There are no chirality outliers.

All (2) torsion outliers are listed below:

Mol	Chain	Res	Type	Atoms
1	A	1034	PTR	CZ-OH-P-O1P
1	A	1034	PTR	CZ-OH-P-O2P

There are no ring outliers.

No monomer is involved in short contacts.

## 5.5 Carbohydrates [i](#)

There are no monosaccharides in this entry.

## 5.6 Ligand geometry [i](#)

2 ligands are modelled in this entry.

In the following table, the Counts columns list the number of bonds (or angles) for which Mogul statistics could be retrieved, the number of bonds (or angles) that are observed in the model and the number of bonds (or angles) that are defined in the Chemical Component Dictionary. The Link column lists molecule types, if any, to which the group is linked. The Z score for a bond length (or angle) is the number of standard deviations the observed value is removed from the expected value. A bond length (or angle) with  $|Z| > 2$  is considered an outlier worth inspection. RMSZ is the root-mean-square of all Z scores of the bond lengths (or angles).

Mol	Type	Chain	Res	Link	Bond lengths			Bond angles		
					Counts	RMSZ	# Z  > 2	Counts	RMSZ	# Z  > 2
2	NTQ	A	1201	-	26,28,28	1.53	2 (7%)	31,43,43	2.81	8 (25%)
2	NTQ	B	1201	-	26,28,28	1.50	4 (15%)	31,43,43	3.29	11 (35%)

In the following table, the Chirals column lists the number of chiral outliers, the number of chiral centers analysed, the number of these observed in the model and the number defined in the Chemical Component Dictionary. Similar counts are reported in the Torsion and Rings columns. '-' means no outliers of that kind were identified.

Mol	Type	Chain	Res	Link	Chirals	Torsions	Rings
2	NTQ	A	1201	-	-	1/12/30/30	0/4/4/4
2	NTQ	B	1201	-	-	0/12/30/30	0/4/4/4

All (6) bond length outliers are listed below:

Mol	Chain	Res	Type	Atoms	Z	Observed(Å)	Ideal(Å)
2	A	1201	NTQ	C6-C5	5.56	1.48	1.40
2	B	1201	NTQ	C6-C5	5.14	1.48	1.40
2	A	1201	NTQ	C22-C21	2.98	1.53	1.46
2	B	1201	NTQ	C22-C21	2.75	1.53	1.46
2	B	1201	NTQ	C8-C7	2.44	1.38	1.35
2	B	1201	NTQ	C23-C22	2.37	1.54	1.45

All (19) bond angle outliers are listed below:

Mol	Chain	Res	Type	Atoms	Z	Observed(°)	Ideal(°)
2	A	1201	NTQ	C8-C9-N11	7.78	122.21	115.81
2	B	1201	NTQ	F25-C22-F24	7.66	114.68	107.67
2	B	1201	NTQ	F24-C22-C21	-7.26	113.08	120.11
2	B	1201	NTQ	N11-C5-N4	7.01	132.59	122.21
2	A	1201	NTQ	F25-C22-F24	6.99	114.06	107.67
2	B	1201	NTQ	C8-C9-N11	6.97	121.55	115.81
2	A	1201	NTQ	N11-C5-N4	6.42	131.72	122.21
2	B	1201	NTQ	O10-C9-C8	-5.57	117.66	125.47
2	B	1201	NTQ	C22-C21-C19	-5.28	113.39	119.90
2	B	1201	NTQ	C23-C21-C22	5.27	60.89	57.82
2	A	1201	NTQ	O10-C9-C8	-4.89	118.61	125.47
2	A	1201	NTQ	F25-C22-C21	-4.63	115.62	120.11
2	A	1201	NTQ	C22-C21-C19	-3.97	115.01	119.90
2	A	1201	NTQ	C23-C21-C22	3.27	59.73	57.82
2	B	1201	NTQ	C14-C15-N18	-2.90	104.56	110.56
2	B	1201	NTQ	C13-C14-C15	-2.89	108.29	111.48
2	B	1201	NTQ	C23-C21-C19	2.17	122.88	118.65
2	B	1201	NTQ	C23-C22-C21	-2.08	59.27	61.22
2	A	1201	NTQ	C14-C15-N18	-2.05	106.31	110.56

There are no chirality outliers.

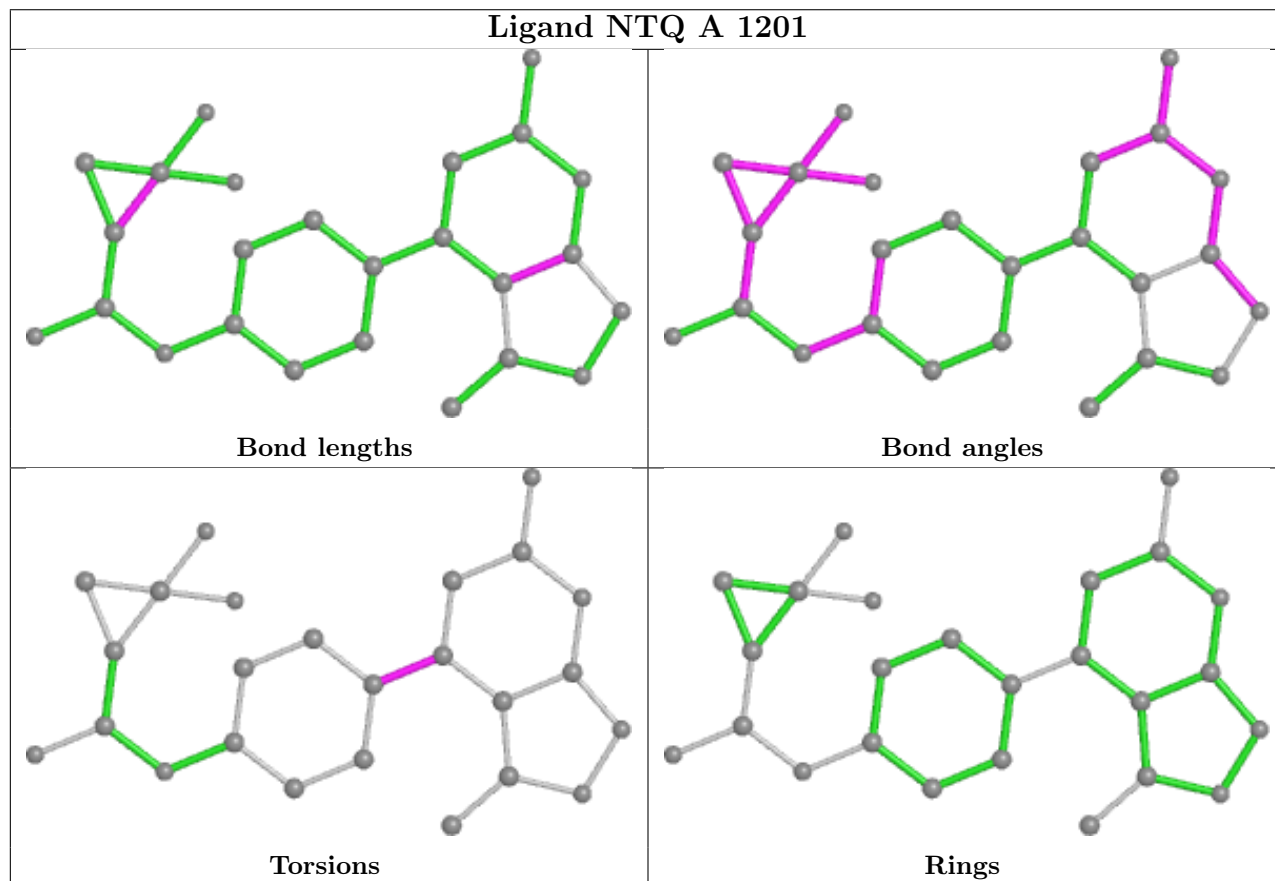
All (1) torsion outliers are listed below:

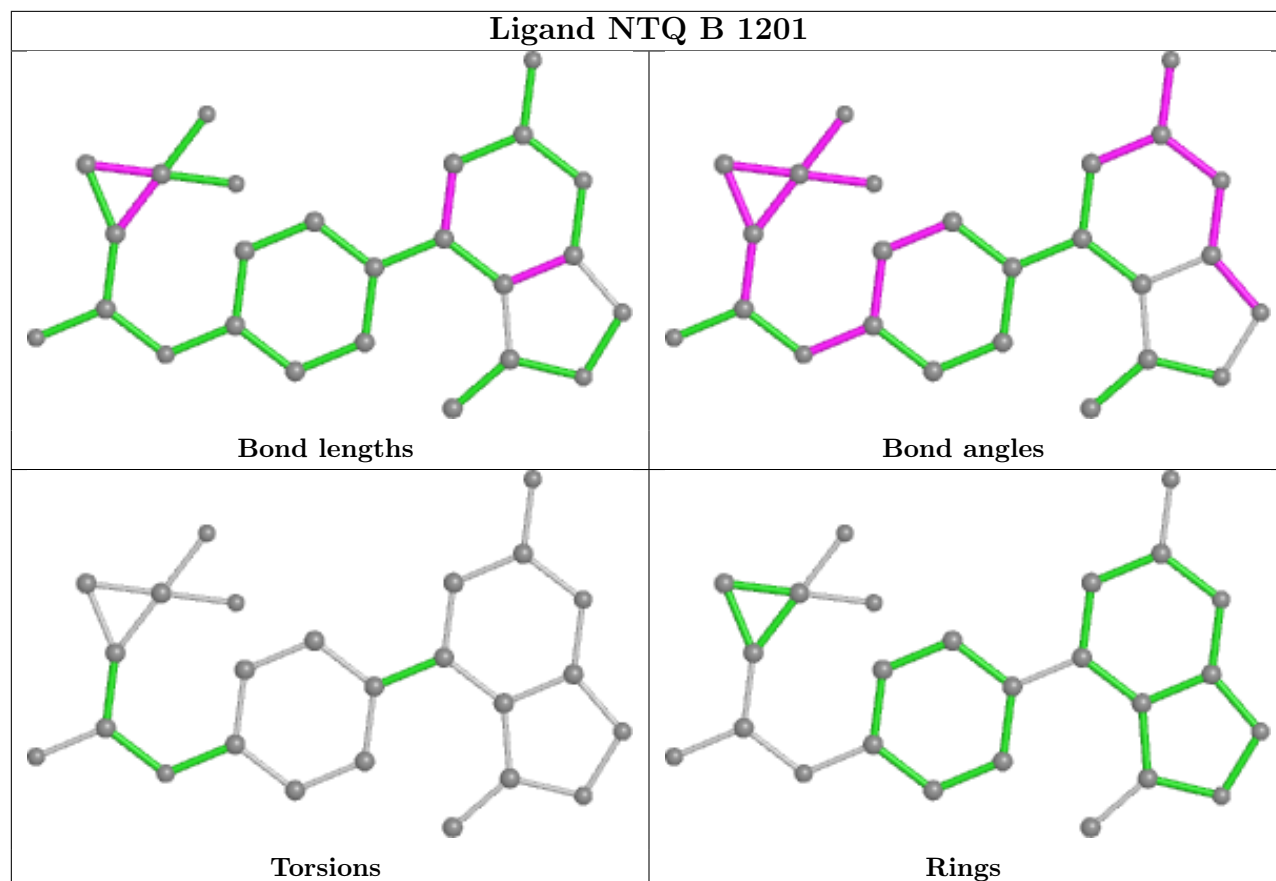
Mol	Chain	Res	Type	Atoms
2	A	1201	NTQ	C17-C12-C7-C8

There are no ring outliers.

No monomer is involved in short contacts.

The following is a two-dimensional graphical depiction of Mogul quality analysis of bond lengths, bond angles, torsion angles, and ring geometry for all instances of the Ligand of Interest. In addition, ligands with molecular weight > 250 and outliers as shown on the validation Tables will also be included. For torsion angles, if less than 5% of the Mogul distribution of torsion angles is within 10 degrees of the torsion angle in question, then that torsion angle is considered an outlier. Any bond that is central to one or more torsion angles identified as an outlier by Mogul will be highlighted in the graph. For rings, the root-mean-square deviation (RMSD) between the ring in question and similar rings identified by Mogul is calculated over all ring torsion angles. If the average RMSD is greater than 60 degrees and the minimal RMSD between the ring in question and any Mogul-identified rings is also greater than 60 degrees, then that ring is considered an outlier. The outliers are highlighted in purple. The color gray indicates Mogul did not find sufficient equivalents in the CSD to analyse the geometry.





## 5.7 Other polymers [i](#)

There are no such residues in this entry.

## 5.8 Polymer linkage issues [i](#)

There are no chain breaks in this entry.

## 6 Fit of model and data

### 6.1 Protein, DNA and RNA chains

In the following table, the column labelled ‘#RSRZ > 2’ contains the number (and percentage) of RSRZ outliers, followed by percent RSRZ outliers for the chain as percentile scores relative to all X-ray entries and entries of similar resolution. The OWAB column contains the minimum, median, 95<sup>th</sup> percentile and maximum values of the occupancy-weighted average B-factor per residue. The column labelled ‘Q < 0.9’ lists the number of (and percentage) of residues with an average occupancy less than 0.9.

Mol	Chain	Analysed	<RSRZ>	#RSRZ>2	OWAB(Å <sup>2</sup> )	Q<0.9
1	A	286/291 (98%)	0.27	13 (4%) 33 40	22, 51, 98, 136	12 (4%)
1	B	276/291 (94%)	0.92	38 (13%) 2 4	45, 75, 102, 130	24 (8%)
All	All	562/582 (96%)	0.59	51 (9%) 9 12	22, 66, 102, 136	36 (6%)

All (51) RSRZ outliers are listed below:

Mol	Chain	Res	Type	RSRZ
1	B	912	PRO	4.9
1	B	1095	THR	4.5
1	B	865	VAL	4.2
1	B	1149	PHE	4.2
1	B	870	PHE	4.2
1	A	947	ASP	4.0
1	A	886	PHE	3.8
1	B	1058	PHE	3.6
1	A	1037	VAL	3.6
1	B	952	ILE	3.6
1	A	865	VAL	3.5
1	B	1140	THR	3.4
1	B	1094	PRO	3.4
1	A	1095	THR	3.4
1	A	885	HIS	3.3
1	A	948	GLY	3.2
1	B	892	CYS	3.1
1	B	944	CYS	3.1
1	B	1069	VAL	3.0
1	B	1089	LEU	2.9
1	B	1153	LEU	2.9
1	B	922	LEU	2.9
1	B	1022	PHE	2.8
1	B	1134	PHE	2.8

*Continued on next page...*



*Continued from previous page...*

Mol	Chain	Res	Type	RSRZ
1	B	1116	CYS	2.8
1	B	883	GLU	2.7
1	B	1142	PHE	2.7
1	B	1047	TRP	2.6
1	B	919	ILE	2.6
1	B	1131	CYS	2.5
1	B	1077	TYR	2.5
1	B	1145	LEU	2.5
1	B	869	HIS	2.5
1	B	880	ASP	2.5
1	B	907	VAL	2.4
1	A	1108	LEU	2.4
1	B	1045	VAL	2.3
1	A	864	GLU	2.3
1	A	949	GLY	2.2
1	B	1119	ASN	2.2
1	A	1099	MET	2.2
1	B	1015	HIS	2.2
1	A	1094	PRO	2.1
1	B	1104	LEU	2.1
1	B	921	ASP	2.1
1	A	910	LEU	2.1
1	B	1040	ASP	2.1
1	B	1002	ARG	2.1
1	B	910	LEU	2.1
1	B	885	HIS	2.0
1	B	954	LEU	2.0

## 6.2 Non-standard residues in protein, DNA, RNA chains [i](#)

In the following table, the Atoms column lists the number of modelled atoms in the group and the number defined in the chemical component dictionary. The B-factors column lists the minimum, median, 95<sup>th</sup> percentile and maximum values of B factors of atoms in the group. The column labelled 'Q< 0.9' lists the number of atoms with occupancy less than 0.9.

Mol	Type	Chain	Res	Atoms	RSCC	RSR	B-factors(Å <sup>2</sup> )	Q<0.9
1	PTR	B	1034	16/17	0.86	0.16	84,96,119,120	0
1	PTR	B	1035	16/17	0.88	0.15	80,85,88,89	0
1	PTR	A	1035	16/17	0.90	0.14	54,57,74,85	0
1	PTR	A	1034	16/17	0.92	0.13	59,67,89,91	0

### 6.3 Carbohydrates [i](#)

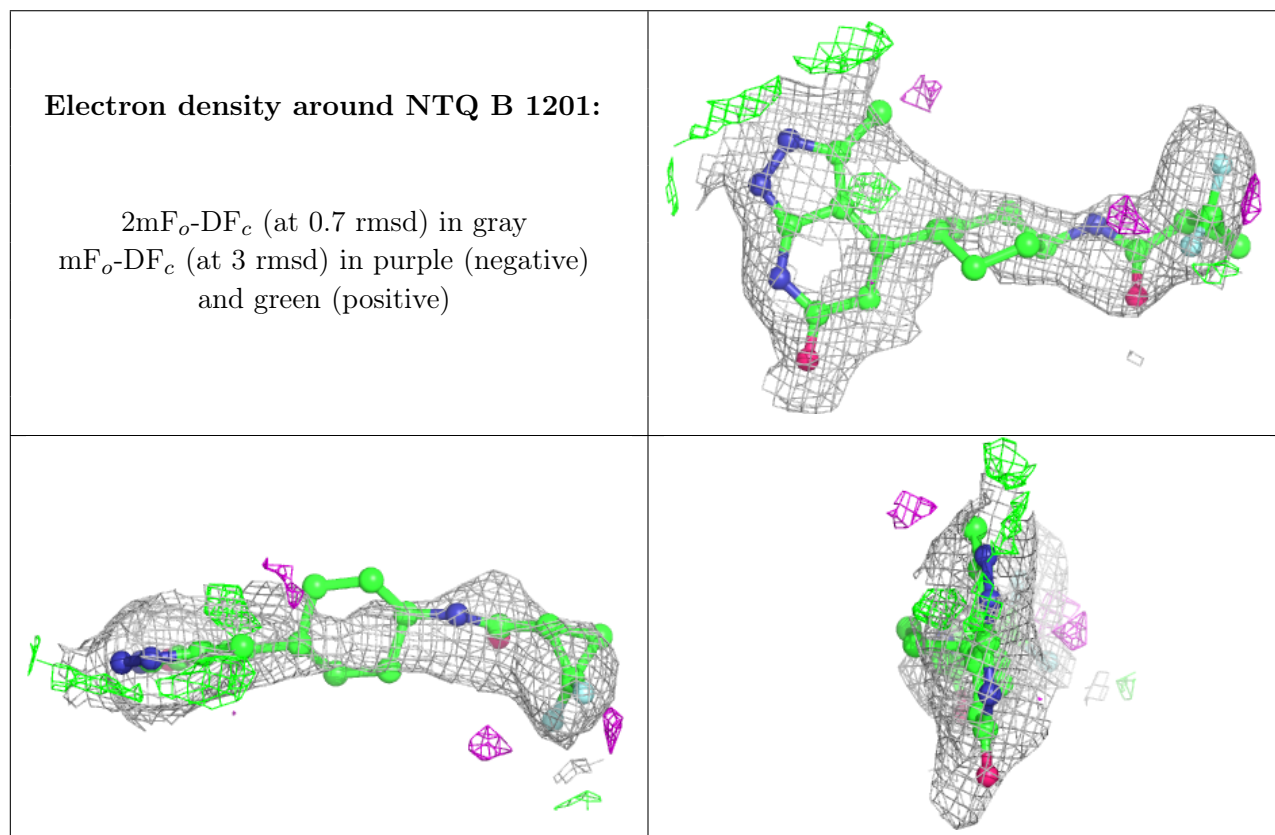
There are no monosaccharides in this entry.

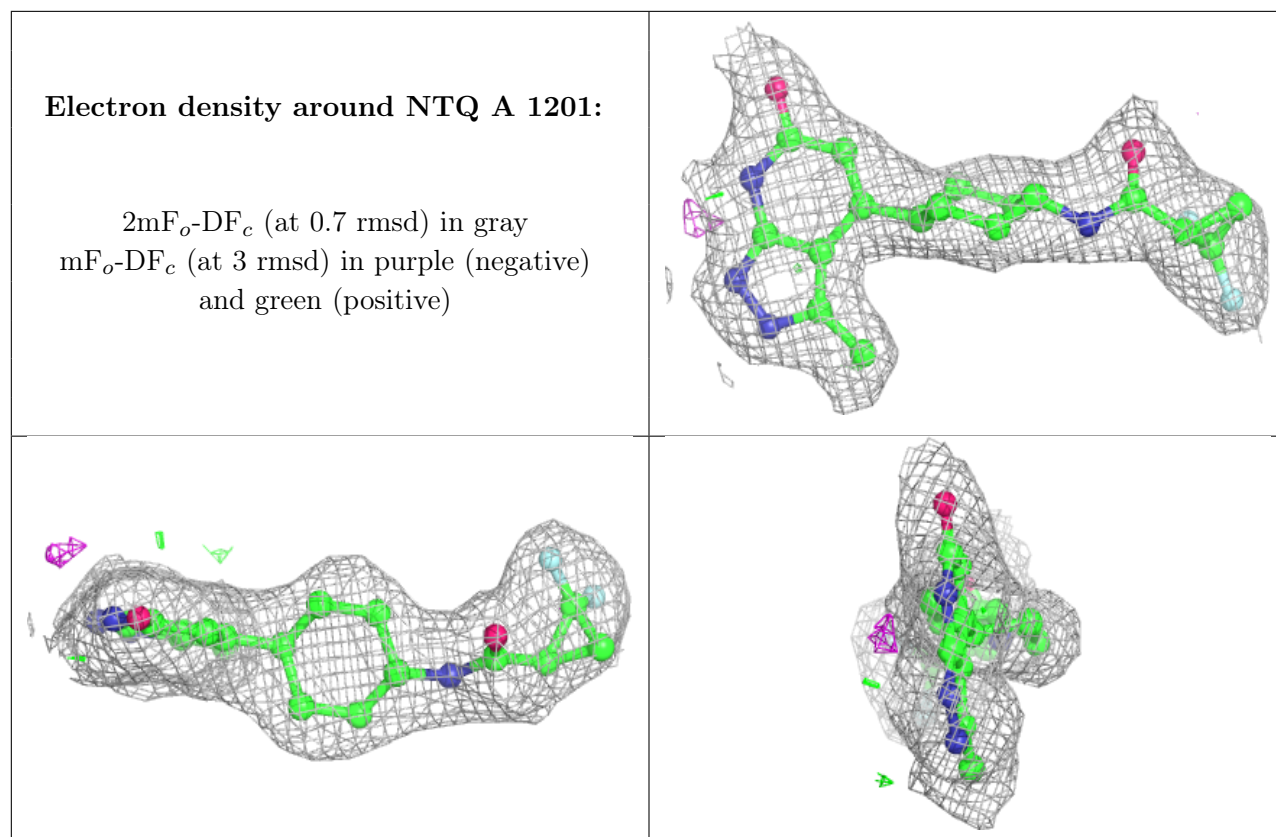
### 6.4 Ligands [i](#)

In the following table, the Atoms column lists the number of modelled atoms in the group and the number defined in the chemical component dictionary. The B-factors column lists the minimum, median, 95<sup>th</sup> percentile and maximum values of B factors of atoms in the group. The column labelled 'Q< 0.9' lists the number of atoms with occupancy less than 0.9.

Mol	Type	Chain	Res	Atoms	RSCC	RSR	B-factors( $\text{\AA}^2$ )	Q<0.9
2	NTQ	B	1201	25/25	0.88	0.25	51,73,112,118	0
2	NTQ	A	1201	25/25	0.94	0.13	29,38,50,51	0

The following is a graphical depiction of the model fit to experimental electron density of all instances of the Ligand of Interest. In addition, ligands with molecular weight > 250 and outliers as shown on the geometry validation Tables will also be included. Each fit is shown from different orientation to approximate a three-dimensional view.





## 6.5 Other polymers [i](#)

There are no such residues in this entry.