



Full wwPDB X-ray Structure Validation Report ⓘ

Oct 15, 2023 – 06:00 AM EDT

PDB ID : 7TQ1
Title : Crystal structure of adaptive laboratory evolved sulfonamide-resistant Dihydropteroate Synthase (DHPS) from Escherichia coli in complex with 6-hydroxymethylpterin
Authors : Stogios, P.J.; Skarina, T.; Tan, K.; Venkatesan, M.; Fruci, M.; Joachimiak, A.; Savchenko, A.; Satchell, K.J.F.; Center for Structural Biology of Infectious Diseases (CSBID); Center for Structural Genomics of Infectious Diseases (CSGID)
Deposited on : 2022-01-26
Resolution : 2.73 Å(reported)

This is a Full wwPDB X-ray Structure Validation Report for a publicly released PDB entry.

We welcome your comments at validation@mail.wwpdb.org

A user guide is available at

<https://www.wwpdb.org/validation/2017/XrayValidationReportHelp>

with specific help available everywhere you see the ⓘ symbol.

The types of validation reports are described at

<http://www.wwpdb.org/validation/2017/FAQs#types>.

The following versions of software and data (see [references ⓘ](#)) were used in the production of this report:

MolProbity : 4.02b-467
Mogul : 1.8.5 (274361), CSD as541be (2020)
Xtriage (Phenix) : 1.13
EDS : 2.36
buster-report : 1.1.7 (2018)
Percentile statistics : 20191225.v01 (using entries in the PDB archive December 25th 2019)
Refmac : 5.8.0158
CCP4 : 7.0.044 (Gargrove)

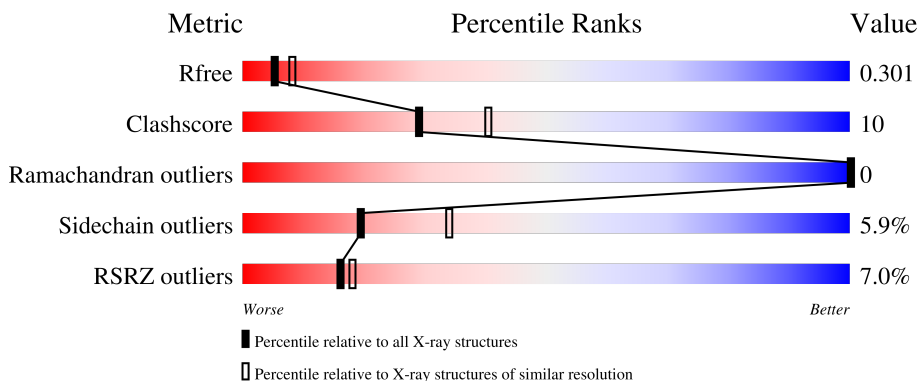
1 Overall quality at a glance

The following experimental techniques were used to determine the structure:

X-RAY DIFFRACTION

The reported resolution of this entry is 2.73 Å.

Percentile scores (ranging between 0-100) for global validation metrics of the entry are shown in the following graphic. The table shows the number of entries on which the scores are based.



Metric	Whole archive (#Entries)	Similar resolution (#Entries, resolution range(Å))
R_{free}	130704	1271 (2.76-2.72)
Clashscore	141614	1322 (2.76-2.72)
Ramachandran outliers	138981	1297 (2.76-2.72)
Sidechain outliers	138945	1298 (2.76-2.72)
RSRZ outliers	127900	1243 (2.76-2.72)

The table below summarises the geometric issues observed across the polymeric chains and their fit to the electron density. The red, orange, yellow and green segments of the lower bar indicate the fraction of residues that contain outliers for ≥ 3 , 2, 1 and 0 types of geometric quality criteria respectively. A grey segment represents the fraction of residues that are not modelled. The numeric value for each fraction is indicated below the corresponding segment, with a dot representing fractions $\leq 5\%$. The upper red bar (where present) indicates the fraction of residues that have poor fit to the electron density. The numeric value is given above the bar.

Mol	Chain	Length	Quality of chain
1	A	285	 7% 75% 19% ••
1	B	285	 6% 68% 24% • 6%

Ideal geometry (proteins) : Engh & Huber (2001)
 Ideal geometry (DNA, RNA) : Parkinson et al. (1996)
 Validation Pipeline (wwPDB-VP) : 2.36

2 Entry composition [i](#)

There are 3 unique types of molecules in this entry. The entry contains 4204 atoms, of which 0 are hydrogens and 0 are deuteriums.

In the tables below, the ZeroOcc column contains the number of atoms modelled with zero occupancy, the AltConf column contains the number of residues with at least one atom in alternate conformation and the Trace column contains the number of residues modelled with at most 2 atoms.

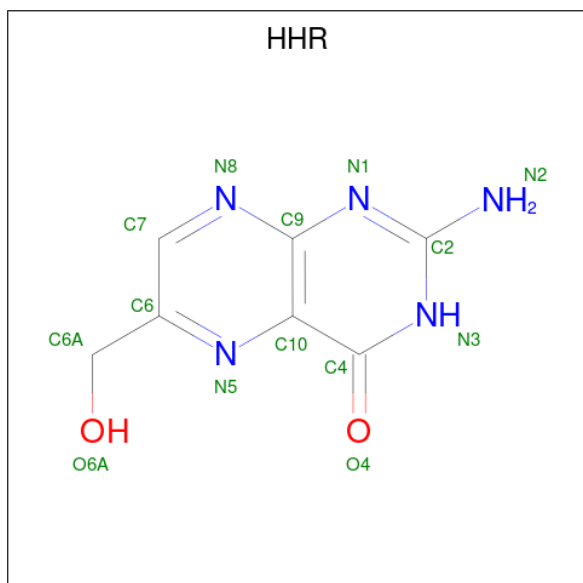
- Molecule 1 is a protein called Dihydropteroate synthase.

Mol	Chain	Residues	Atoms					ZeroOcc	AltConf	Trace
			Total	C	N	O	S			
1	A	274	Total 2088	C 1315	N 368	O 392	S 13	0	0	0
1	B	267	Total 2036	C 1284	N 357	O 383	S 12	0	0	0

There are 6 discrepancies between the modelled and reference sequences:

Chain	Residue	Modelled	Actual	Comment	Reference
A	0	GLY	-	expression tag	UNP P0AC13
A	187	GLY	-	insertion	UNP P0AC13
A	188	PHE	-	insertion	UNP P0AC13
B	0	GLY	-	expression tag	UNP P0AC13
B	187	GLY	-	insertion	UNP P0AC13
B	188	PHE	-	insertion	UNP P0AC13

- Molecule 2 is 6-HYDROXYMETHYLPTERIN (three-letter code: HHR) (formula: $C_7H_7N_5O_2$) (labeled as "Ligand of Interest" by depositor).



Mol	Chain	Residues	Atoms				ZeroOcc	AltConf
2	A	1	Total	C	N	O	0	0
			14	7	5	2		
2	B	1	Total	C	N	O	0	0
			14	7	5	2		

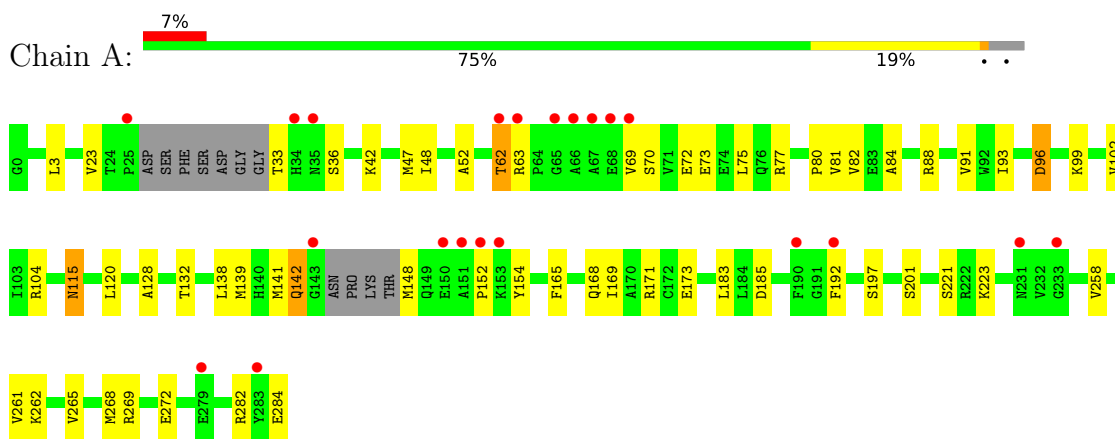
- Molecule 3 is water.

Mol	Chain	Residues	Atoms		ZeroOcc	AltConf
3	A	28	Total	O	0	0
			28	28		
3	B	24	Total	O	0	0
			24	24		

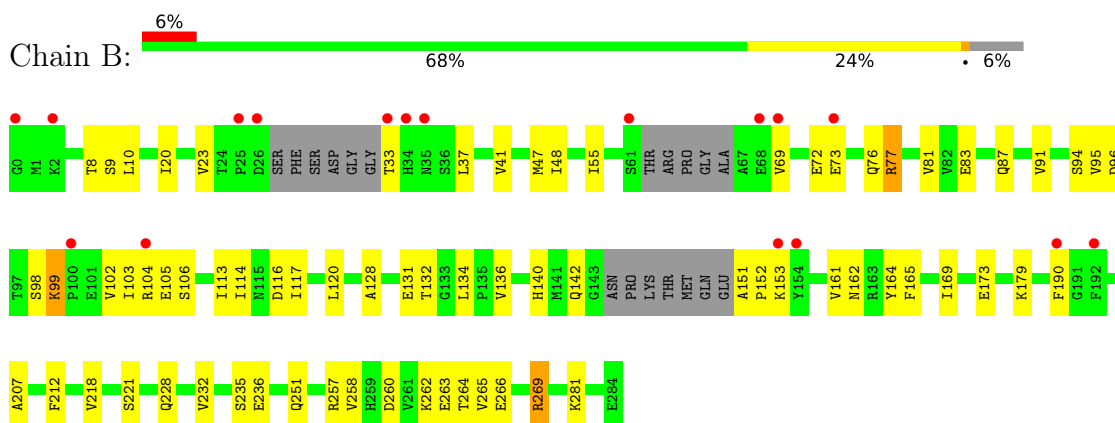
3 Residue-property plots [i](#)

These plots are drawn for all protein, RNA, DNA and oligosaccharide chains in the entry. The first graphic for a chain summarises the proportions of the various outlier classes displayed in the second graphic. The second graphic shows the sequence view annotated by issues in geometry and electron density. Residues are color-coded according to the number of geometric quality criteria for which they contain at least one outlier: green = 0, yellow = 1, orange = 2 and red = 3 or more. A red dot above a residue indicates a poor fit to the electron density ($RSRZ > 2$). Stretches of 2 or more consecutive residues without any outlier are shown as a green connector. Residues present in the sample, but not in the model, are shown in grey.

- Molecule 1: Dihydropteroate synthase



- Molecule 1: Dihydropteroate synthase



4 Data and refinement statistics

Property	Value	Source
Space group	I 2 2 2	Depositor
Cell constants a, b, c, α , β , γ	77.88Å 84.57Å 175.49Å 90.00° 90.00° 90.00°	Depositor
Resolution (Å)	46.77 – 2.73 48.11 – 2.73	Depositor EDS
% Data completeness (in resolution range)	93.5 (46.77-2.73) 82.6 (48.11-2.73)	Depositor EDS
R_{merge}	0.19	Depositor
R_{sym}	(Not available)	Depositor
$\langle I/\sigma(I) \rangle$ ¹	1.06 (at 2.73Å)	Xtrriage
Refinement program	PHENIX 1.20_4459	Depositor
R, R_{free}	0.233 , 0.288 0.240 , 0.301	Depositor DCC
R_{free} test set	744 reflections (4.96%)	wwPDB-VP
Wilson B-factor (Å ²)	53.4	Xtrriage
Anisotropy	0.478	Xtrriage
Bulk solvent k_{sol} (e/Å ³), B_{sol} (Å ²)	0.26 , 16.8	EDS
L-test for twinning ²	$\langle L \rangle = 0.51$, $\langle L^2 \rangle = 0.35$	Xtrriage
Estimated twinning fraction	No twinning to report.	Xtrriage
F_o, F_c correlation	0.93	EDS
Total number of atoms	4204	wwPDB-VP
Average B, all atoms (Å ²)	76.0	wwPDB-VP

Xtrriage's analysis on translational NCS is as follows: *The analyses of the Patterson function reveals a significant off-origin peak that is 48.28 % of the origin peak, indicating pseudo-translational symmetry. The chance of finding a peak of this or larger height randomly in a structure without pseudo-translational symmetry is equal to 8.7928e-05. The detected translational NCS is most likely also responsible for the elevated intensity ratio.*

¹Intensities estimated from amplitudes.

²Theoretical values of $\langle |L| \rangle$, $\langle L^2 \rangle$ for acentric reflections are 0.5, 0.333 respectively for untwinned datasets, and 0.375, 0.2 for perfectly twinned datasets.

5 Model quality [i](#)

5.1 Standard geometry [i](#)

Bond lengths and bond angles in the following residue types are not validated in this section: HHR

The Z score for a bond length (or angle) is the number of standard deviations the observed value is removed from the expected value. A bond length (or angle) with $|Z| > 5$ is considered an outlier worth inspection. RMSZ is the root-mean-square of all Z scores of the bond lengths (or angles).

Mol	Chain	Bond lengths		Bond angles	
		RMSZ	# Z >5	RMSZ	# Z >5
1	A	0.28	0/2122	0.51	0/2865
1	B	0.29	0/2068	0.51	0/2791
All	All	0.28	0/4190	0.51	0/5656

There are no bond length outliers.

There are no bond angle outliers.

There are no chirality outliers.

There are no planarity outliers.

5.2 Too-close contacts [i](#)

In the following table, the Non-H and H(model) columns list the number of non-hydrogen atoms and hydrogen atoms in the chain respectively. The H(added) column lists the number of hydrogen atoms added and optimized by MolProbity. The Clashes column lists the number of clashes within the asymmetric unit, whereas Symm-Clashes lists symmetry-related clashes.

Mol	Chain	Non-H	H(model)	H(added)	Clashes	Symm-Clashes
1	A	2088	0	2106	38	0
1	B	2036	0	2051	42	0
2	A	14	0	6	1	0
2	B	14	0	6	0	0
3	A	28	0	0	0	0
3	B	24	0	0	1	0
All	All	4204	0	4169	80	0

The all-atom clashscore is defined as the number of clashes found per 1000 atoms (including hydrogen atoms). The all-atom clashscore for this structure is 10.

All (80) close contacts within the same asymmetric unit are listed below, sorted by their clash

magnitude.

Atom-1	Atom-2	Interatomic distance (Å)	Clash overlap (Å)
1:A:142:GLN:OE1	1:A:152:PRO:HG2	1.70	0.90
1:A:142:GLN:CD	1:A:152:PRO:HG2	2.02	0.80
1:A:120:LEU:O	1:A:171:ARG:NH2	2.21	0.73
1:A:268:MET:O	1:A:272:GLU:HG3	1.94	0.66
1:B:23:VAL:HG11	1:B:81:VAL:HG21	1.77	0.66
1:B:33:THR:HG22	1:B:77:ARG:HD2	1.77	0.65
1:A:269:ARG:HG2	1:A:269:ARG:HH11	1.61	0.64
1:B:48:ILE:HG12	1:B:91:VAL:HG11	1.77	0.64
1:A:282:ARG:HH11	1:A:282:ARG:HG3	1.62	0.64
1:B:228:GLN:NE2	3:B:401:HOH:O	2.33	0.61
1:B:258:VAL:HG11	1:B:264:THR:HG21	1.83	0.61
1:B:47:MET:HE3	1:B:55:ILE:HD12	1.84	0.58
1:A:165:PHE:O	1:A:169:ILE:HD12	2.03	0.58
1:B:120:LEU:HD11	1:B:136:VAL:HG11	1.87	0.57
1:A:48:ILE:HG12	1:A:91:VAL:HG11	1.86	0.56
1:A:165:PHE:O	1:A:168:GLN:N	2.38	0.56
1:A:23:VAL:HG11	1:A:81:VAL:HG21	1.86	0.55
1:A:115:ASN:O	1:A:115:ASN:ND2	2.39	0.55
1:A:62:THR:O	1:A:62:THR:OG1	2.25	0.54
1:B:23:VAL:O	1:B:77:ARG:HG2	2.06	0.54
1:B:151:ALA:HB2	1:B:190:PHE:HE1	1.73	0.53
1:B:207:ALA:HB2	1:B:251:GLN:HB3	1.89	0.53
1:B:165:PHE:O	1:B:169:ILE:HD12	2.09	0.53
1:A:96:ASP:HA	1:A:115:ASN:O	2.09	0.52
1:B:104:ARG:NH1	1:B:131:GLU:OE1	2.43	0.52
1:A:138:LEU:HD13	1:A:168:GLN:HB3	1.92	0.52
1:B:95:VAL:HG21	1:B:106:SER:HB3	1.90	0.52
1:A:221:SER:HB2	1:A:258:VAL:HA	1.92	0.51
1:B:33:THR:HG23	1:B:76:GLN:HG3	1.92	0.51
1:A:75:LEU:HD13	1:A:102:VAL:HG22	1.93	0.51
1:A:142:GLN:HG3	1:A:154:TYR:OH	2.11	0.51
1:A:72:GLU:HA	1:A:75:LEU:HD23	1.93	0.50
1:B:179:LYS:NZ	1:B:212:PHE:O	2.44	0.49
1:A:3:LEU:HD11	1:A:183:LEU:HD21	1.93	0.49
1:B:99:LYS:HG3	1:B:102:VAL:HG23	1.93	0.49
1:B:265:VAL:O	1:B:269:ARG:HG2	2.12	0.49
1:A:282:ARG:HG3	1:A:282:ARG:NH1	2.26	0.49
1:B:169:ILE:O	1:B:173:GLU:HG3	2.12	0.49
1:B:103:ILE:HG23	1:B:114:ILE:HG12	1.94	0.49
1:B:262:LYS:O	1:B:266:GLU:HG3	2.13	0.49
1:B:263:GLU:OE1	1:B:263:GLU:N	2.37	0.49

Continued on next page...

Continued from previous page...

Atom-1	Atom-2	Interatomic distance (Å)	Clash overlap (Å)
1:A:139:MET:HG3	1:A:185:ASP:HB3	1.94	0.48
1:B:69:VAL:HG13	1:B:73:GLU:HB2	1.95	0.47
1:B:105:GLU:HA	1:B:105:GLU:OE1	2.14	0.47
1:A:269:ARG:HG2	1:A:269:ARG:NH1	2.28	0.47
1:B:103:ILE:HG22	1:B:132:THR:HG21	1.96	0.47
1:A:33:THR:HA	1:A:36:SER:HB3	1.98	0.46
1:B:102:VAL:O	1:B:106:SER:OG	2.30	0.46
1:B:72:GLU:OE2	1:B:73:GLU:HG3	2.16	0.45
1:B:114:ILE:CD1	1:B:134:LEU:HB2	2.47	0.45
1:B:98:SER:OG	1:B:116:ASP:OD1	2.26	0.45
1:B:221:SER:HB2	1:B:258:VAL:HA	1.99	0.45
1:A:165:PHE:C	1:A:169:ILE:HD12	2.37	0.45
1:B:20:ILE:HG12	1:B:257:ARG:CZ	2.47	0.45
1:A:84:ALA:O	1:A:88:ARG:HG3	2.16	0.45
1:B:8:THR:OG1	1:B:9:SER:N	2.49	0.45
1:A:169:ILE:O	1:A:173:GLU:HG3	2.16	0.45
1:B:37:LEU:O	1:B:41:VAL:HG23	2.17	0.45
1:B:140:HIS:ND1	1:B:161:VAL:HG22	2.32	0.44
1:A:128:ALA:O	1:A:132:THR:HG23	2.17	0.44
1:B:117:ILE:HD12	1:B:117:ILE:HA	1.91	0.44
1:B:232:VAL:HB	1:B:236:GLU:HB2	1.99	0.44
1:A:69:VAL:HG23	1:A:99:LYS:NZ	2.34	0.43
1:B:151:ALA:HA	1:B:152:PRO:HD3	1.89	0.43
1:A:142:GLN:NE2	1:A:152:PRO:HB2	2.34	0.43
1:A:73:GLU:HB3	1:A:77:ARG:HH21	1.83	0.43
1:B:140:HIS:HA	1:B:164:TYR:CE2	2.53	0.43
1:A:265:VAL:O	1:A:269:ARG:HG3	2.18	0.42
1:A:82:VAL:HG13	1:A:93:ILE:HG21	2.02	0.42
1:A:52:ALA:HB2	1:A:261:VAL:HG11	2.02	0.42
1:A:69:VAL:HG23	1:A:99:LYS:HZ1	1.85	0.42
1:B:83:GLU:O	1:B:87:GLN:HG3	2.19	0.42
1:A:223:LYS:NZ	2:A:301:HHR:H6A1	2.35	0.41
1:A:141:MET:HE3	1:A:192:PHE:HD1	1.85	0.41
1:A:47:MET:HG2	1:A:261:VAL:HG21	2.02	0.41
1:B:104:ARG:HH12	1:B:131:GLU:CD	2.24	0.40
1:B:114:ILE:HD11	1:B:134:LEU:HB2	2.03	0.40
1:A:115:ASN:ND2	1:A:115:ASN:C	2.75	0.40
1:B:128:ALA:O	1:B:132:THR:HG23	2.21	0.40
1:B:94:SER:HB3	1:B:113:ILE:HB	2.04	0.40

There are no symmetry-related clashes.

5.3 Torsion angles [i](#)

5.3.1 Protein backbone [i](#)

In the following table, the Percentiles column shows the percent Ramachandran outliers of the chain as a percentile score with respect to all X-ray entries followed by that with respect to entries of similar resolution.

The Analysed column shows the number of residues for which the backbone conformation was analysed, and the total number of residues.

Mol	Chain	Analysed	Favoured	Allowed	Outliers	Percentiles	
1	A	268/285 (94%)	255 (95%)	13 (5%)	0	100	100
1	B	259/285 (91%)	249 (96%)	10 (4%)	0	100	100
All	All	527/570 (92%)	504 (96%)	23 (4%)	0	100	100

There are no Ramachandran outliers to report.

5.3.2 Protein sidechains [i](#)

In the following table, the Percentiles column shows the percent sidechain outliers of the chain as a percentile score with respect to all X-ray entries followed by that with respect to entries of similar resolution.

The Analysed column shows the number of residues for which the sidechain conformation was analysed, and the total number of residues.

Mol	Chain	Analysed	Rotameric	Outliers	Percentiles	
1	A	223/232 (96%)	209 (94%)	14 (6%)	18	31
1	B	218/232 (94%)	206 (94%)	12 (6%)	21	37
All	All	441/464 (95%)	415 (94%)	26 (6%)	19	34

All (26) residues with a non-rotameric sidechain are listed below:

Mol	Chain	Res	Type
1	A	42	LYS
1	A	62	THR
1	A	63	ARG
1	A	70	SER
1	A	80	PRO
1	A	96	ASP
1	A	104	ARG
1	A	115	ASN

Continued on next page...

Continued from previous page...

Mol	Chain	Res	Type
1	A	142	GLN
1	A	148	MET
1	A	197	SER
1	A	201	SER
1	A	262	LYS
1	A	284	GLU
1	B	10	LEU
1	B	77	ARG
1	B	96	ASP
1	B	99	LYS
1	B	142	GLN
1	B	153	LYS
1	B	162	ASN
1	B	218	VAL
1	B	235	SER
1	B	260	ASP
1	B	269	ARG
1	B	281	LYS

Sometimes sidechains can be flipped to improve hydrogen bonding and reduce clashes. All (2) such sidechains are listed below:

Mol	Chain	Res	Type
1	B	162	ASN
1	B	210	HIS

5.3.3 RNA [i](#)

There are no RNA molecules in this entry.

5.4 Non-standard residues in protein, DNA, RNA chains [i](#)

There are no non-standard protein/DNA/RNA residues in this entry.

5.5 Carbohydrates [i](#)

There are no monosaccharides in this entry.

5.6 Ligand geometry

2 ligands are modelled in this entry.

In the following table, the Counts columns list the number of bonds (or angles) for which Mogul statistics could be retrieved, the number of bonds (or angles) that are observed in the model and the number of bonds (or angles) that are defined in the Chemical Component Dictionary. The Link column lists molecule types, if any, to which the group is linked. The Z score for a bond length (or angle) is the number of standard deviations the observed value is removed from the expected value. A bond length (or angle) with $|Z| > 2$ is considered an outlier worth inspection. RMSZ is the root-mean-square of all Z scores of the bond lengths (or angles).

Mol	Type	Chain	Res	Link	Bond lengths			Bond angles		
					Counts	RMSZ	# Z > 2	Counts	RMSZ	# Z > 2
2	HHR	A	301	-	15,15,15	2.83	4 (26%)	18,21,21	2.82	9 (50%)
2	HHR	B	301	-	15,15,15	2.82	4 (26%)	18,21,21	2.86	9 (50%)

In the following table, the Chirals column lists the number of chiral outliers, the number of chiral centers analysed, the number of these observed in the model and the number defined in the Chemical Component Dictionary. Similar counts are reported in the Torsion and Rings columns. '-' means no outliers of that kind were identified.

Mol	Type	Chain	Res	Link	Chirals	Torsions	Rings
2	HHR	A	301	-	-	0/2/2/2	0/2/2/2
2	HHR	B	301	-	-	0/2/2/2	0/2/2/2

All (8) bond length outliers are listed below:

Mol	Chain	Res	Type	Atoms	Z	Observed(Å)	Ideal(Å)
2	B	301	HHR	C6A-C6	-7.31	1.39	1.51
2	A	301	HHR	C6A-C6	-7.28	1.39	1.51
2	B	301	HHR	C7-N8	5.43	1.40	1.31
2	A	301	HHR	C7-N8	5.39	1.40	1.31
2	A	301	HHR	C4-N3	4.38	1.40	1.33
2	B	301	HHR	C4-N3	4.29	1.40	1.33
2	A	301	HHR	C2-N3	2.95	1.40	1.35
2	B	301	HHR	C2-N3	2.89	1.40	1.35

All (18) bond angle outliers are listed below:

Mol	Chain	Res	Type	Atoms	Z	Observed(°)	Ideal(°)
2	B	301	HHR	C2-N1-C9	5.36	121.47	115.36
2	B	301	HHR	N1-C2-N3	-5.24	120.24	127.22
2	A	301	HHR	C2-N1-C9	5.20	121.30	115.36

Continued on next page...

Continued from previous page...

Mol	Chain	Res	Type	Atoms	Z	Observed(°)	Ideal(°)
2	A	301	HHR	N1-C2-N3	-5.10	120.41	127.22
2	A	301	HHR	C6-C7-N8	-4.18	119.03	123.13
2	B	301	HHR	C6-C7-N8	-4.08	119.13	123.13
2	B	301	HHR	C6A-C6-N5	3.95	120.03	115.38
2	A	301	HHR	C6A-C6-N5	3.84	119.89	115.38
2	B	301	HHR	N8-C9-N1	3.48	119.80	115.82
2	A	301	HHR	N8-C9-N1	3.41	119.71	115.82
2	A	301	HHR	C10-C4-N3	-3.37	118.82	123.43
2	A	301	HHR	C7-N8-C9	3.29	120.00	116.69
2	B	301	HHR	C10-C4-N3	-3.24	119.00	123.43
2	B	301	HHR	C7-N8-C9	3.22	119.93	116.69
2	B	301	HHR	C6-N5-C10	2.31	121.18	118.45
2	A	301	HHR	C6-N5-C10	2.21	121.06	118.45
2	B	301	HHR	C2-N3-C4	2.10	119.26	115.93
2	A	301	HHR	C2-N3-C4	2.09	119.24	115.93

There are no chirality outliers.

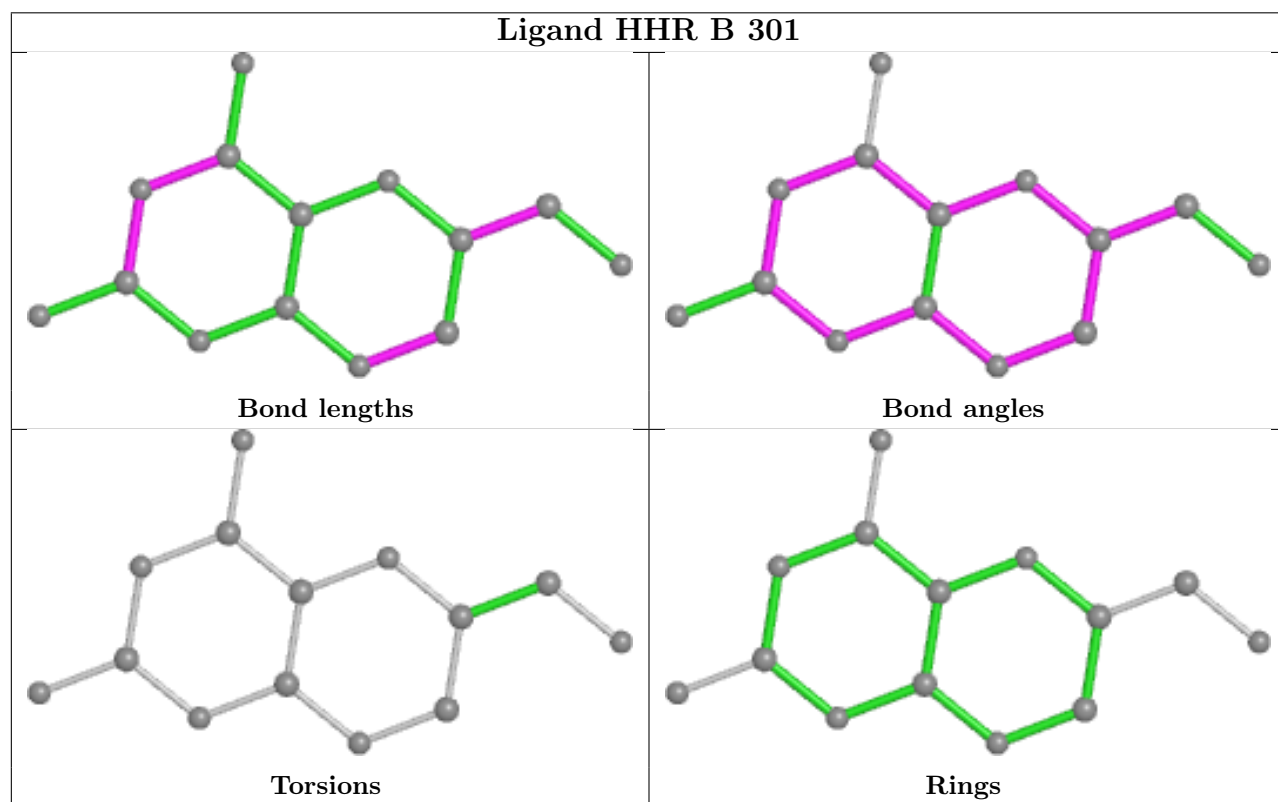
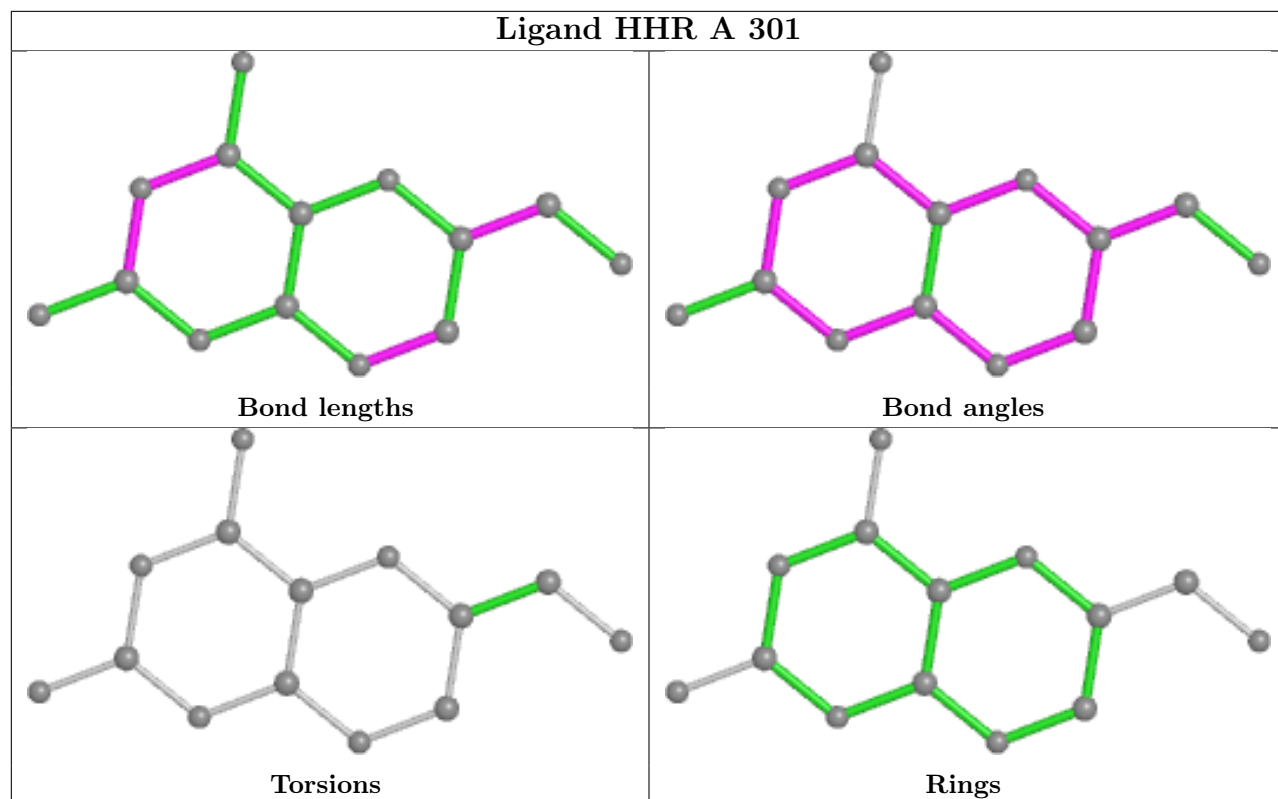
There are no torsion outliers.

There are no ring outliers.

1 monomer is involved in 1 short contact:

Mol	Chain	Res	Type	Clashes	Symm-Clashes
2	A	301	HHR	1	0

The following is a two-dimensional graphical depiction of Mogul quality analysis of bond lengths, bond angles, torsion angles, and ring geometry for all instances of the Ligand of Interest. In addition, ligands with molecular weight > 250 and outliers as shown on the validation Tables will also be included. For torsion angles, if less than 5% of the Mogul distribution of torsion angles is within 10 degrees of the torsion angle in question, then that torsion angle is considered an outlier. Any bond that is central to one or more torsion angles identified as an outlier by Mogul will be highlighted in the graph. For rings, the root-mean-square deviation (RMSD) between the ring in question and similar rings identified by Mogul is calculated over all ring torsion angles. If the average RMSD is greater than 60 degrees and the minimal RMSD between the ring in question and any Mogul-identified rings is also greater than 60 degrees, then that ring is considered an outlier. The outliers are highlighted in purple. The color gray indicates Mogul did not find sufficient equivalents in the CSD to analyse the geometry.



5.7 Other polymers [i](#)

There are no such residues in this entry.

5.8 Polymer linkage issues

There are no chain breaks in this entry.

6 Fit of model and data

6.1 Protein, DNA and RNA chains

In the following table, the column labelled ‘#RSRZ > 2’ contains the number (and percentage) of RSRZ outliers, followed by percent RSRZ outliers for the chain as percentile scores relative to all X-ray entries and entries of similar resolution. The OWAB column contains the minimum, median, 95th percentile and maximum values of the occupancy-weighted average B-factor per residue. The column labelled ‘Q < 0.9’ lists the number of (and percentage) of residues with an average occupancy less than 0.9.

Mol	Chain	Analysed	<RSRZ>	#RSRZ>2	OWAB(Å ²)	Q<0.9
1	A	274/285 (96%)	0.58	21 (7%) 13 15	40, 69, 145, 227	0
1	B	267/285 (93%)	0.26	17 (6%) 19 22	41, 68, 134, 196	0
All	All	541/570 (94%)	0.42	38 (7%) 16 18	40, 69, 140, 227	0

All (38) RSRZ outliers are listed below:

Mol	Chain	Res	Type	RSRZ
1	A	67	ALA	15.3
1	A	68	GLU	13.4
1	A	66	ALA	13.2
1	A	69	VAL	8.2
1	B	33	THR	8.0
1	A	65	GLY	7.5
1	B	25	PRO	7.1
1	B	34	HIS	6.4
1	B	26	ASP	6.3
1	A	152	PRO	5.8
1	A	63	ARG	5.8
1	A	62	THR	5.8
1	B	35	ASN	5.4
1	A	25	PRO	5.2
1	B	0	GLY	5.1
1	B	154	TYR	4.8
1	A	151	ALA	4.8
1	A	150	GLU	4.7
1	B	192	PHE	4.3
1	A	34	HIS	3.6
1	B	61	SER	3.6
1	B	190	PHE	3.0
1	A	153	LYS	2.8
1	B	2	LYS	2.7

Continued on next page...

Continued from previous page...

Mol	Chain	Res	Type	RSRZ
1	A	143	GLY	2.7
1	B	68	GLU	2.6
1	B	153	LYS	2.4
1	A	35	ASN	2.4
1	B	100	PRO	2.4
1	A	283	TYR	2.3
1	A	231	ASN	2.3
1	B	69	VAL	2.2
1	A	190	PHE	2.2
1	B	73	GLU	2.1
1	A	233	GLY	2.1
1	A	279	GLU	2.1
1	A	192	PHE	2.0
1	B	104	ARG	2.0

6.2 Non-standard residues in protein, DNA, RNA chains [i](#)

There are no non-standard protein/DNA/RNA residues in this entry.

6.3 Carbohydrates [i](#)

There are no monosaccharides in this entry.

6.4 Ligands [i](#)

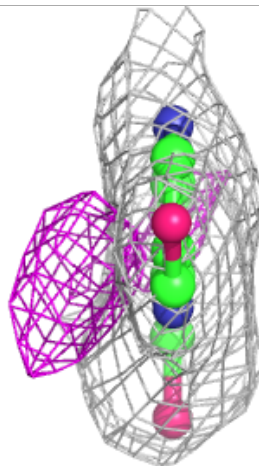
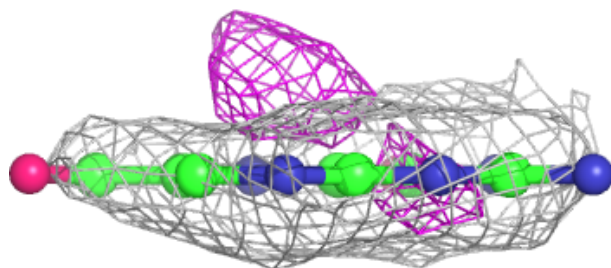
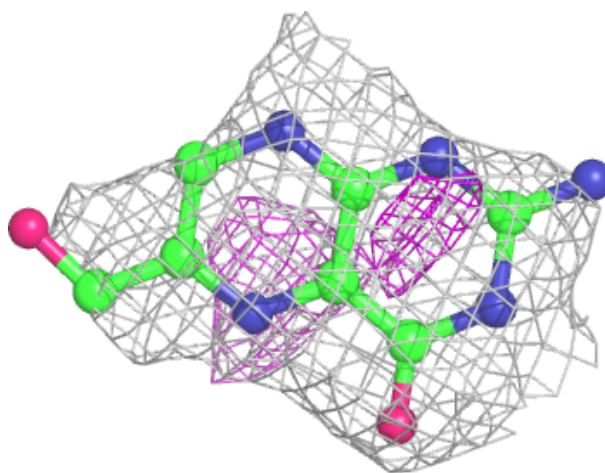
In the following table, the Atoms column lists the number of modelled atoms in the group and the number defined in the chemical component dictionary. The B-factors column lists the minimum, median, 95th percentile and maximum values of B factors of atoms in the group. The column labelled 'Q<0.9' lists the number of atoms with occupancy less than 0.9.

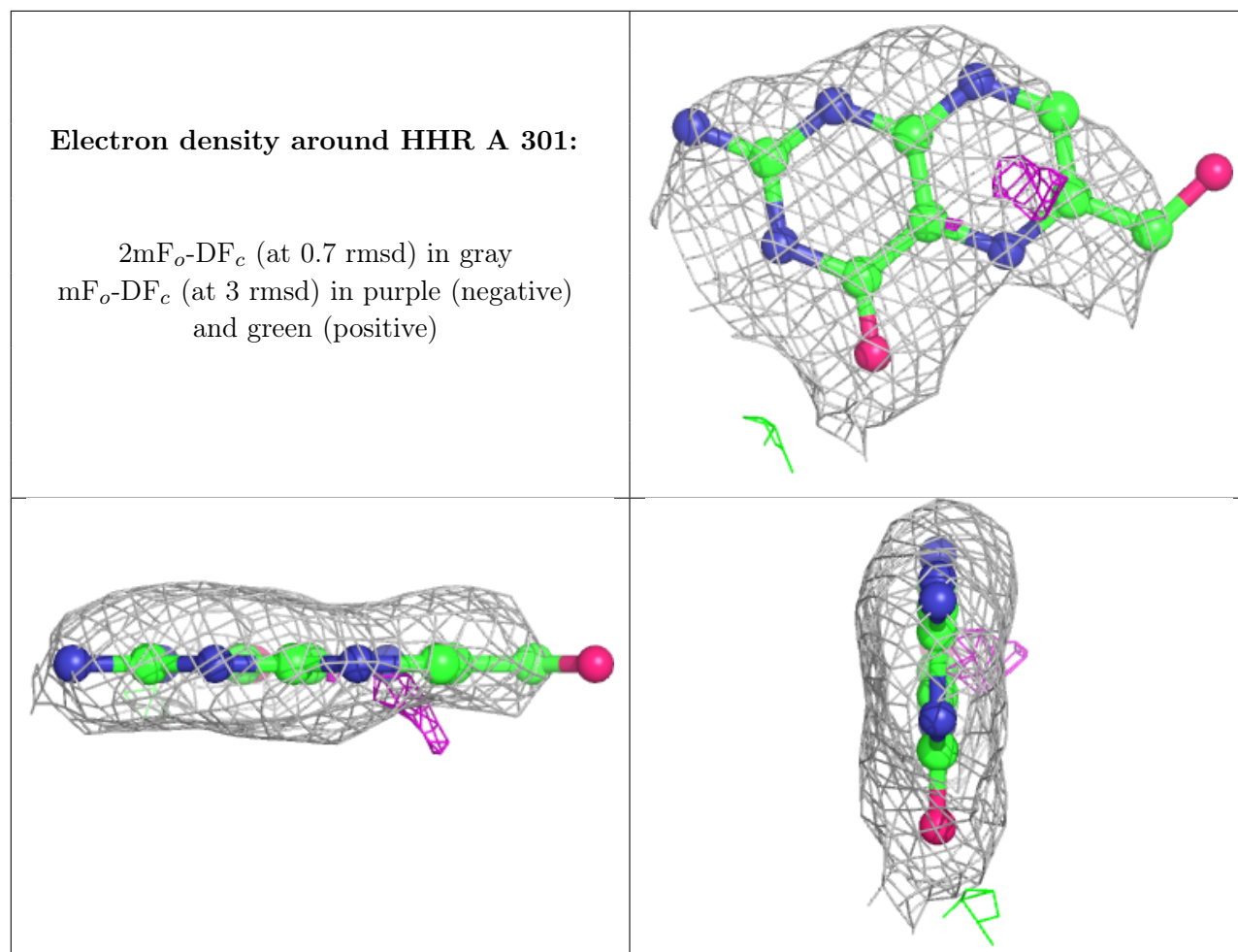
Mol	Type	Chain	Res	Atoms	RSCC	RSR	B-factors(Å ²)	Q<0.9
2	HHR	B	301	14/14	0.87	0.43	71,77,80,83	0
2	HHR	A	301	14/14	0.88	0.31	62,73,77,91	0

The following is a graphical depiction of the model fit to experimental electron density of all instances of the Ligand of Interest. In addition, ligands with molecular weight > 250 and outliers as shown on the geometry validation Tables will also be included. Each fit is shown from different orientation to approximate a three-dimensional view.

Electron density around HHR B 301:

$2mF_o-DF_c$ (at 0.7 rmsd) in gray
 mF_o-DF_c (at 3 rmsd) in purple (negative)
and green (positive)





6.5 Other polymers [i](#)

There are no such residues in this entry.