



# Full wwPDB X-ray Structure Validation Report ⓘ

Oct 21, 2024 – 01:34 PM EDT

PDB ID : 1TR2  
Title : Crystal structure of human full-length vinculin (residues 1-1066)  
Authors : Borgon, R.A.; Vonrhein, C.; Bricogne, G.; Bois, P.R.; Izard, T.  
Deposited on : 2004-06-19  
Resolution : 2.90 Å(reported)

This is a Full wwPDB X-ray Structure Validation Report for a publicly released PDB entry.

We welcome your comments at [validation@mail.wwpdb.org](mailto:validation@mail.wwpdb.org)

A user guide is available at

<https://www.wwpdb.org/validation/2017/XrayValidationReportHelp>

with specific help available everywhere you see the ⓘ symbol.

The types of validation reports are described at

<http://www.wwpdb.org/validation/2017/FAQs#types>.

---

The following versions of software and data (see [references ⓘ](#)) were used in the production of this report:

MolProbity : 4.02b-467  
Mogul : 2022.3.0, CSD as543be (2022)  
Xtrriage (Phenix) : **NOT EXECUTED**  
EDS : **NOT EXECUTED**  
Percentile statistics : 20231227.v01 (using entries in the PDB archive December 27th 2023)  
Ideal geometry (proteins) : Engh & Huber (2001)  
Ideal geometry (DNA, RNA) : Parkinson et al. (1996)  
Validation Pipeline (wwPDB-VP) : 2.39

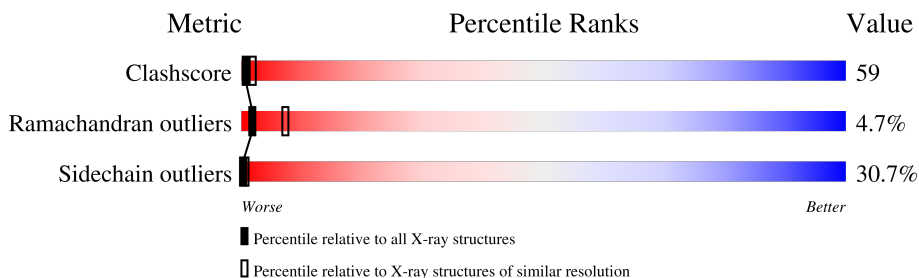
# 1 Overall quality at a glance

The following experimental techniques were used to determine the structure:

*X-RAY DIFFRACTION*

The reported resolution of this entry is 2.90 Å.

Percentile scores (ranging between 0-100) for global validation metrics of the entry are shown in the following graphic. The table shows the number of entries on which the scores are based.



Metric	Whole archive (#Entries)	Similar resolution (#Entries, resolution range(Å))
Clashscore	180529	2564 (2.90-2.90)
Ramachandran outliers	177936	2514 (2.90-2.90)
Sidechain outliers	177891	2516 (2.90-2.90)

The table below summarises the geometric issues observed across the polymeric chains and their fit to the electron density. The red, orange, yellow and green segments of the lower bar indicate the fraction of residues that contain outliers for  $\geq 3$ , 2, 1 and 0 types of geometric quality criteria respectively. A grey segment represents the fraction of residues that are not modelled. The numeric value for each fraction is indicated below the corresponding segment, with a dot representing fractions  $\leq 5\%$ .

Note EDS was not executed.

Mol	Chain	Length	Quality of chain
1	A	1066	 28% 48% 19% . .
1	B	1066	 29% 48% 18% . .

## 2 Entry composition [i](#)

There are 2 unique types of molecules in this entry. The entry contains 16033 atoms, of which 0 are hydrogens and 0 are deuteriums.

In the tables below, the ZeroOcc column contains the number of atoms modelled with zero occupancy, the AltConf column contains the number of residues with at least one atom in alternate conformation and the Trace column contains the number of residues modelled with at most 2 atoms.

- Molecule 1 is a protein called VINCULIN ISOFORM 1.

Mol	Chain	Residues	Atoms						ZeroOcc	AltConf	Trace
			Total	C	N	O	S	Se			
1	A	1028	7908	4876	1436	1550	10	36	99	8	0
1	B	1029	7907	4873	1438	1550	10	36	117	7	0

There are 72 discrepancies between the modelled and reference sequences:

Chain	Residue	Modelled	Actual	Comment	Reference
A	1	MSE	MET	initiating methionine	UNP P18206
A	26	MSE	MET	modified residue	UNP P18206
A	74	MSE	MET	modified residue	UNP P18206
A	94	MSE	MET	modified residue	UNP P18206
A	154	MSE	MET	modified residue	UNP P18206
A	168	MSE	MET	modified residue	UNP P18206
A	171	MSE	MET	modified residue	UNP P18206
A	174	MSE	MET	modified residue	UNP P18206
A	190	MSE	MET	modified residue	UNP P18206
A	195	MSE	MET	modified residue	UNP P18206
A	209	MSE	MET	modified residue	UNP P18206
A	237	MSE	MET	modified residue	UNP P18206
A	266	MSE	MET	modified residue	UNP P18206
A	327	MSE	MET	modified residue	UNP P18206
A	331	MSE	MET	modified residue	UNP P18206
A	350	MSE	MET	modified residue	UNP P18206
A	377	MSE	MET	modified residue	UNP P18206
A	533	MSE	MET	modified residue	UNP P18206
A	534	MSE	MET	modified residue	UNP P18206
A	587	MSE	MET	modified residue	UNP P18206
A	591	MSE	MET	modified residue	UNP P18206
A	698	MSE	MET	modified residue	UNP P18206
A	709	MSE	MET	modified residue	UNP P18206
A	741	MSE	MET	modified residue	UNP P18206
A	748	MSE	MET	modified residue	UNP P18206

*Continued on next page...*

*Continued from previous page...*

Chain	Residue	Modelled	Actual	Comment	Reference
A	797	MSE	MET	modified residue	UNP P18206
A	799	MSE	MET	modified residue	UNP P18206
A	898	MSE	MET	modified residue	UNP P18206
A	899	MSE	MET	modified residue	UNP P18206
A	900	MSE	MET	modified residue	UNP P18206
A	926	MSE	MET	modified residue	UNP P18206
A	930	MSE	MET	modified residue	UNP P18206
A	933	MSE	MET	modified residue	UNP P18206
A	1005	MSE	MET	modified residue	UNP P18206
A	1022	MSE	MET	modified residue	UNP P18206
A	1031	MSE	MET	modified residue	UNP P18206
B	1	MSE	MET	initiating methionine	UNP P18206
B	26	MSE	MET	modified residue	UNP P18206
B	74	MSE	MET	modified residue	UNP P18206
B	94	MSE	MET	modified residue	UNP P18206
B	154	MSE	MET	modified residue	UNP P18206
B	168	MSE	MET	modified residue	UNP P18206
B	171	MSE	MET	modified residue	UNP P18206
B	174	MSE	MET	modified residue	UNP P18206
B	190	MSE	MET	modified residue	UNP P18206
B	195	MSE	MET	modified residue	UNP P18206
B	209	MSE	MET	modified residue	UNP P18206
B	237	MSE	MET	modified residue	UNP P18206
B	266	MSE	MET	modified residue	UNP P18206
B	327	MSE	MET	modified residue	UNP P18206
B	331	MSE	MET	modified residue	UNP P18206
B	350	MSE	MET	modified residue	UNP P18206
B	377	MSE	MET	modified residue	UNP P18206
B	533	MSE	MET	modified residue	UNP P18206
B	534	MSE	MET	modified residue	UNP P18206
B	587	MSE	MET	modified residue	UNP P18206
B	591	MSE	MET	modified residue	UNP P18206
B	698	MSE	MET	modified residue	UNP P18206
B	709	MSE	MET	modified residue	UNP P18206
B	741	MSE	MET	modified residue	UNP P18206
B	748	MSE	MET	modified residue	UNP P18206
B	797	MSE	MET	modified residue	UNP P18206
B	799	MSE	MET	modified residue	UNP P18206
B	898	MSE	MET	modified residue	UNP P18206
B	899	MSE	MET	modified residue	UNP P18206
B	900	MSE	MET	modified residue	UNP P18206
B	926	MSE	MET	modified residue	UNP P18206

*Continued on next page...*

*Continued from previous page...*

Chain	Residue	Modelled	Actual	Comment	Reference
B	930	MSE	MET	modified residue	UNP P18206
B	933	MSE	MET	modified residue	UNP P18206
B	1005	MSE	MET	modified residue	UNP P18206
B	1022	MSE	MET	modified residue	UNP P18206
B	1031	MSE	MET	modified residue	UNP P18206

- Molecule 2 is water.

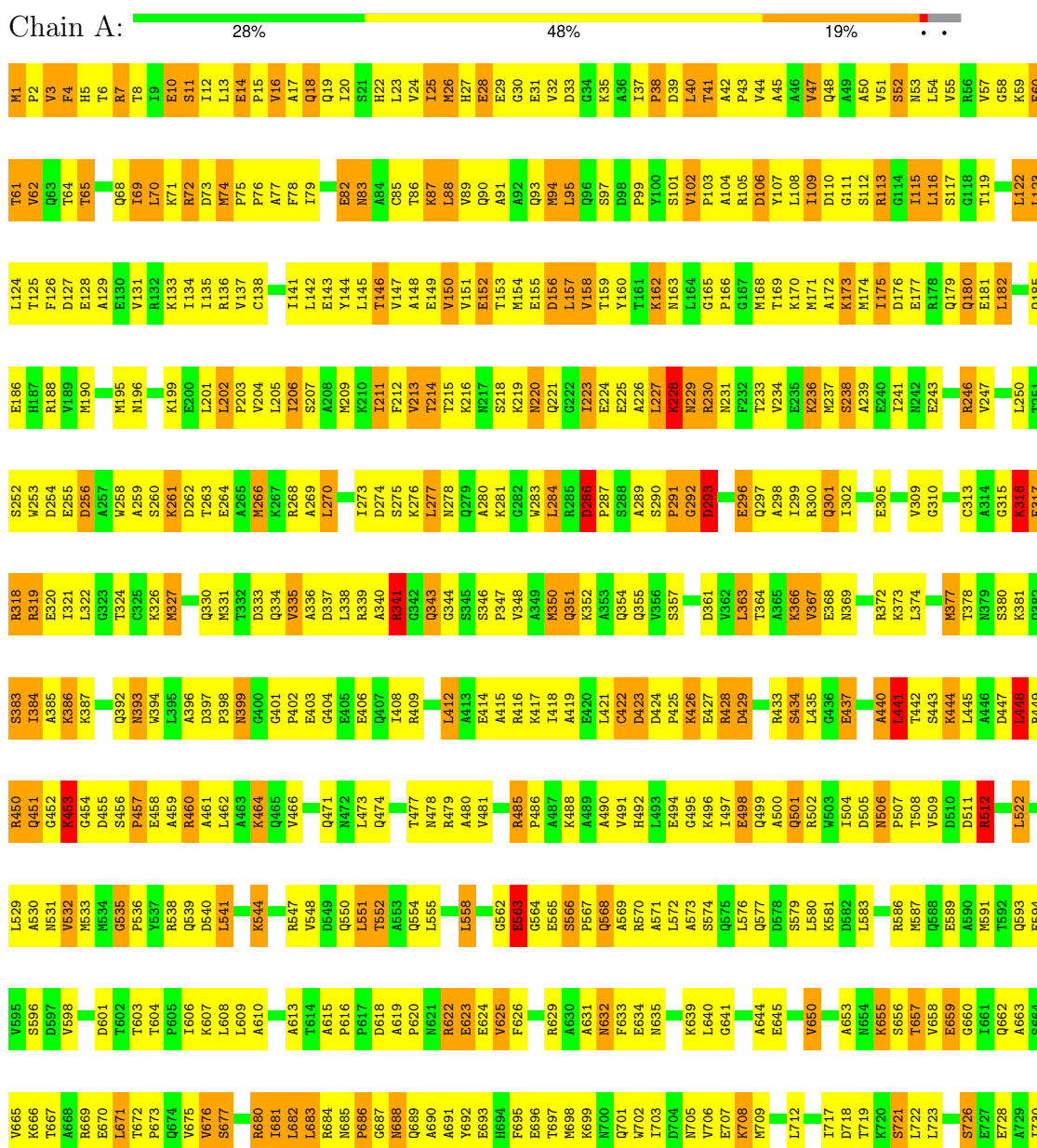
Mol	Chain	Residues	Atoms	ZeroOcc	AltConf
2	A	108	Total O 108 108	0	0
2	B	110	Total O 110 110	0	0

### 3 Residue-property plots

These plots are drawn for all protein, RNA, DNA and oligosaccharide chains in the entry. The first graphic for a chain summarises the proportions of the various outlier classes displayed in the second graphic. The second graphic shows the sequence view annotated by issues in geometry. Residues are color-coded according to the number of geometric quality criteria for which they contain at least one outlier: green = 0, yellow = 1, orange = 2 and red = 3 or more. Stretches of 2 or more consecutive residues without any outlier are shown as a green connector. Residues present in the sample, but not in the model, are shown in grey.

Note EDS was not executed.

- Molecule 1: VINCULIN ISOFORM 1





A1003	S934	PRO	D810	M741	T603
T1004	R335	PRO	P811	A742	T604
M1005	L936	ARG	G812	M743	P605
L1006	V937	PRO	L813	I744	L671
G1007	PRO	PRO	Q814	I745	I672
L1008	PRO	PRO	K815	P746	K607
I1011	G940	P877	S816	Q747	L608
I1012	S941	P878	S817	Q747	L609
S1012	G942	E879	F817	M748	A610
D1013	T943	E880	L818	L749	V611
R944	K881	K881	D819	V750	A612
R945	D882	D882	Y822	A751	A613
A946	E883	E883	R823	T754	T614
L947	E884	E884	I824	S755	A615
I948	F885	F885	I824	I756	P616
Q949	P886	P886	L825	A757	P617
A1018	E887	E887	W828	R758	P618
A1019	K889	K889	R758	Q688	A619
T1020	PRO	PRO	A829	Q689	P620
E1021	D953	D953	K830	A760	M621
M1022	I954	I954	R831	A761	R622
L1023	A955	A955	E832	R762	E623
V1024	K956	K956	I894	I763	E624
H1025	A957	A957	E833	I764	V625
M1026	S958	S958	A834	L764	F626
A1027	D959	D959	F835	L765	D627
Q1028	E960	E960	Q836	V766	E628
I1031	V961	V961	P837	A767	R629
Q1032	T962	T962	Q838	K768	M632
K1035	R963	R963	E839	R769	F633
E1036	L964	L964	P840	E770	E634
R1039	E967	E967	W771	E772	M635
E1042	C972	C972	F842	D776	K639
S1045	T973	T973	PRO	N700	L640
I1046	D974	D974	PRO	K708	G641
R1047	K975	K975	PRO	M709	A644
R1048	R976	R976	ASP	L712	E645
R1049	I977	I977	LEU	I717	A648
T1050	R978	R978	LEU	D718	A649
D1051	T979	T979	LEU	T719	V650
A1052	L981	L981	LEU	K720	PRO
G1053	C985	C985	THR	S721	A653
F1054	E986	E986	ASP	L722	M654
T1055	R987	R987	GLU	L723	K655
L1056	I988	I988	LEU	P796	S656
R1057	P989	P989	ALA	M797	T657
R1060	T990	T990	PRO	S726	V658
K1061	PRO	PRO	PRO	A729	E659
PRO	T993	T993	LYS	I730	G660
TRP	Q994	Q994	PRO	K731	I661
TRP	L995	L995	PRO	K732	Q662
GLN	K996	K996	LEU	D733	A663
	L997	L997	PRO	L734	S664
	L998	L998	GLU	D735	V665
	S999	S999	GLY	K736	K666
	T1000	T1000	VAL	C737	T667
	V1001	V1001	PRO	M807	A668
	E932	E932	PRO	I808	
	M933	M933	PRO	S809	



## 4 Data and refinement statistics

Xtrriage (Phenix) and EDS were not executed - this section is therefore incomplete.

Property	Value	Source
Space group	P 1 21 1	Depositor
Cell constants a, b, c, $\alpha$ , $\beta$ , $\gamma$	66.74Å 154.08Å 108.95Å 90.00° 90.44° 90.00°	Depositor
Resolution (Å)	56.86 – 2.90	Depositor
% Data completeness (in resolution range)	100.0 (56.86-2.90)	Depositor
$R_{merge}$	0.15	Depositor
$R_{sym}$	(Not available)	Depositor
Refinement program	BUSTER-TNT 1.1.1	Depositor
R, $R_{free}$	0.232 , 0.300	Depositor
Estimated twinning fraction	No twinning to report.	Xtrriage
Total number of atoms	16033	wwPDB-VP
Average B, all atoms (Å <sup>2</sup> )	92.0	wwPDB-VP

## 5 Model quality [i](#)

### 5.1 Standard geometry [i](#)

The Z score for a bond length (or angle) is the number of standard deviations the observed value is removed from the expected value. A bond length (or angle) with  $|Z| > 5$  is considered an outlier worth inspection. RMSZ is the root-mean-square of all Z scores of the bond lengths (or angles).

Mol	Chain	Bond lengths		Bond angles	
		RMSZ	# Z  >5	RMSZ	# Z  >5
1	A	0.39	0/7994	0.61	2/10720 (0.0%)
1	B	0.38	0/7992	0.60	1/10717 (0.0%)
All	All	0.38	0/15986	0.61	3/21437 (0.0%)

There are no bond length outliers.

All (3) bond angle outliers are listed below:

Mol	Chain	Res	Type	Atoms	Z	Observed(°)	Ideal(°)
1	A	1054	PHE	CB-CG-CD2	-10.78	113.25	120.80
1	A	1054	PHE	CB-CG-CD1	7.84	126.29	120.80
1	B	616	PRO	CA-N-CD	-5.02	104.48	111.50

There are no chirality outliers.

There are no planarity outliers.

### 5.2 Too-close contacts [i](#)

In the following table, the Non-H and H(model) columns list the number of non-hydrogen atoms and hydrogen atoms in the chain respectively. The H(added) column lists the number of hydrogen atoms added and optimized by MolProbity. The Clashes column lists the number of clashes within the asymmetric unit, whereas Symm-Clashes lists symmetry-related clashes.

Mol	Chain	Non-H	H(model)	H(added)	Clashes	Symm-Clashes
1	A	7908	0	8065	912	0
1	B	7907	0	8072	958	0
2	A	108	0	0	12	0
2	B	110	0	0	12	0
All	All	16033	0	16137	1865	0

The all-atom clashscore is defined as the number of clashes found per 1000 atoms (including hydrogen atoms). The all-atom clashscore for this structure is 59.

All (1865) close contacts within the same asymmetric unit are listed below, sorted by their clash magnitude.

Atom-1	Atom-2	Interatomic distance (Å)	Clash overlap (Å)
1:B:65:THR:HG21	1:B:70:LEU:HD22	1.21	1.18
1:A:74:MSE:HE3	1:A:122:LEU:HD21	1.18	1.18
1:B:913:SER:HB2	1:B:915:LYS:HG3	1.24	1.17
1:B:729:ALA:HA	1:B:732:LYS:HD3	1.24	1.16
1:B:215:THR:HG22	1:B:223:ILE:HG13	1.26	1.16
1:A:732:LYS:HE2	1:A:736:LYS:HE2	1.28	1.14
1:A:898:MSE:HE1	1:A:1023:LEU:HD23	1.30	1.14
1:A:65:THR:HG21	1:A:70:LEU:HD22	1.19	1.12
1:A:426:LYS:HE3	1:A:427:GLU:HG3	1.23	1.10
1:B:153:THR:HB	1:B:156:ASP:HB2	1.12	1.08
1:B:697:THR:HG22	1:B:698:MSE:HE2	1.35	1.08
1:A:153:THR:HB	1:A:156:ASP:HB2	1.10	1.08
1:A:807:ASN:HB3	1:A:810:ASP:HB3	1.37	1.07
1:B:20:ILE:HD11	1:B:115:ILE:HG12	1.09	1.06
1:B:807:ASN:ND2	1:B:807:ASN:H	1.45	1.06
1:A:53:ASN:HB3	1:B:288:SER:HB2	1.35	1.06
1:A:913:SER:HB2	1:A:915:LYS:HG2	1.35	1.03
1:B:613:ALA:HB1	1:B:682:LEU:HD12	1.41	1.02
1:A:158:VAL:HG13	1:A:162:LYS:HE3	1.41	1.02
1:A:281:LYS:HA	1:A:284:LEU:HD12	1.40	1.01
1:B:216:LYS:HA	1:B:223:ILE:HG12	1.40	1.01
1:A:74:MSE:CE	1:A:122:LEU:HD21	1.91	1.01
1:B:158:VAL:HG13	1:B:162:LYS:HE3	1.45	0.99
1:A:445:LEU:HB2	1:A:462:LEU:HD23	1.45	0.99
1:A:441:LEU:HA	1:A:444:LYS:HZ2	1.28	0.98
1:B:256:ASP:HA	1:B:258:TRP:CZ3	1.98	0.98
1:A:770:GLU:HG2	1:A:835:PHE:HE1	1.29	0.97
1:B:898:MSE:HE1	1:B:1023:LEU:HD23	1.47	0.96
1:A:491:VAL:HG11	1:A:658:VAL:HG11	1.44	0.96
1:A:215:THR:HG22	1:A:223:ILE:HG13	1.46	0.95
1:A:811:PRO:HB3	1:A:815:LYS:HE2	1.47	0.95
1:A:589:GLU:HG2	1:A:593:GLN:HE21	1.30	0.94
1:A:441:LEU:HD23	1:A:441:LEU:H	1.33	0.94
1:B:589:GLU:HG2	1:B:593:GLN:HE21	1.27	0.94
1:B:671:LEU:HD23	1:B:671:LEU:H	1.33	0.94
1:A:20:ILE:HD11	1:A:115:ILE:HG12	1.49	0.93
1:A:109:ILE:HD13	1:A:1008[B]:ARG:HH21	1.29	0.93
1:A:113:ARG:HB2	1:A:1004:THR:HG21	1.51	0.93
1:A:447:ASP:HA	1:A:450:ARG:HD2	1.50	0.93
1:B:897:PRO:HB2	1:B:1024:VAL:HG11	1.47	0.93

*Continued on next page...*

*Continued from previous page...*

Atom-1	Atom-2	Interatomic distance (Å)	Clash overlap (Å)
1:B:738:LYS:HA	1:B:741:MSE:HE2	1.50	0.93
1:B:22:HIS:HA	1:B:25:ILE:HG13	1.47	0.93
1:B:31:GLU:HA	1:B:105:ARG:NH2	1.84	0.92
1:B:936:LEU:HB3	1:B:943:THR:HG23	1.49	0.92
1:A:778:LYS:HD2	1:A:1049:ARG:HH12	1.35	0.92
1:B:913:SER:HB2	1:B:915:LYS:CG	2.00	0.92
1:B:448:LEU:HA	1:B:451:GLN:HG2	1.51	0.92
1:A:69:ILE:H	1:A:69:ILE:HD12	1.33	0.91
1:B:40:LEU:HB2	1:B:43:PRO:CG	1.98	0.91
1:A:453:LYS:H	1:A:453:LYS:HD2	1.34	0.91
1:B:1:MSE:HE1	1:B:1018:GLN:NE2	1.86	0.91
1:A:409[B]:ARG:NH2	1:A:442:THR:HB	1.86	0.91
1:B:75:PRO:HA	1:B:78:PHE:CD2	2.06	0.91
1:A:770:GLU:HG2	1:A:835:PHE:CE1	2.05	0.90
1:A:960:GLU:HG2	1:A:963:ARG:HH21	1.36	0.90
1:B:74:MSE:HE3	1:B:122:LEU:HD21	1.54	0.90
1:B:138:CYS:SG	1:B:171:MSE:HE3	2.10	0.90
1:A:51:VAL:HG11	1:A:115:ILE:HD12	1.53	0.90
1:B:906:HIS:HB2	1:B:927:ALA:HB1	1.52	0.90
1:B:926:MSE:HA	1:B:929:LEU:HB2	1.53	0.90
1:B:40:LEU:HB2	1:B:43:PRO:HG2	1.50	0.90
1:B:215:THR:HG23	1:B:220:ASN:HB2	1.52	0.90
1:B:116:LEU:HD13	1:B:1001:VAL:HG23	1.53	0.90
1:B:793:THR:HG23	1:B:824:ILE:HG12	1.52	0.90
1:B:179:GLN:HA	1:B:182:LEU:HD22	1.50	0.90
1:B:445:LEU:HB2	1:B:462:LEU:HD23	1.54	0.90
1:A:28:GLU:HG2	1:A:945:ARG:HE	1.37	0.90
1:A:491:VAL:CG1	1:A:658:VAL:HG11	2.01	0.89
1:A:138:CYS:SG	1:A:171:MSE:HE3	2.12	0.89
1:A:74:MSE:HE2	1:A:78:PHE:CZ	2.07	0.89
1:B:153:THR:HG22	1:B:154:MSE:H	1.36	0.89
1:B:533:MSE:CE	1:B:541:LEU:HD12	2.01	0.89
1:B:807:ASN:H	1:B:807:ASN:HD22	0.94	0.89
1:A:914:SER:N	1:A:915:LYS:HE2	1.88	0.89
1:A:675:VAL:HG22	1:A:698:MSE:HB3	1.54	0.88
1:A:789:GLU:HG2	1:A:830:LYS:NZ	1.88	0.88
1:B:281:LYS:HA	1:B:284:LEU:HD12	1.55	0.88
1:B:770:GLU:HG2	1:B:835:PHE:HE1	1.38	0.88
1:A:688:ASN:O	1:A:690:ALA:N	2.07	0.88
1:A:936:LEU:HB3	1:A:943:THR:HG23	1.56	0.88
1:A:75:PRO:HA	1:A:78:PHE:CD2	2.08	0.87

*Continued on next page...*

*Continued from previous page...*

Atom-1	Atom-2	Interatomic distance (Å)	Clash overlap (Å)
1:B:216:LYS:CA	1:B:223:ILE:HG12	2.03	0.87
1:A:641:GLY:HA2	1:A:709:MSE:HE1	1.56	0.87
1:B:69:ILE:HD12	1:B:69:ILE:H	1.40	0.87
1:B:807:ASN:HD22	1:B:807:ASN:N	1.73	0.87
1:A:558:LEU:HD22	1:A:569:ALA:HB2	1.53	0.87
1:A:153:THR:HB	1:A:156:ASP:CB	2.03	0.87
1:B:95:LEU:HD21	1:B:105:ARG:HG3	1.57	0.86
1:B:27:HIS:CD2	1:B:108:LEU:HD23	2.10	0.86
1:A:153:THR:HG22	1:A:154:MSE:H	1.39	0.86
1:B:898:MSE:HE1	1:B:1023:LEU:CD2	2.04	0.86
1:A:220:ASN:HD22	1:A:220:ASN:H	1.21	0.86
1:B:113:ARG:HB3	1:B:1004:THR:CG2	2.05	0.86
1:B:394:TRP:HE1	1:B:401:GLY:H	1.22	0.86
1:A:441:LEU:HA	1:A:444:LYS:NZ	1.90	0.86
1:B:558:LEU:HD22	1:B:569:ALA:HB2	1.56	0.86
1:B:94:MSE:HE2	1:B:104:ALA:HB2	1.55	0.86
1:B:276:LYS:HE3	1:B:301:GLN:HE21	1.40	0.86
1:A:926:MSE:HA	1:A:929:LEU:HB2	1.56	0.86
1:B:1005:MSE:HE1	1:B:1015:GLU:HG2	1.58	0.86
1:B:530:ALA:HA	1:B:533:MSE:HE3	1.58	0.85
1:A:70:LEU:HG	1:A:74:MSE:HG3	1.57	0.85
1:B:22:HIS:HA	1:B:25:ILE:CG1	2.06	0.85
1:B:412:LEU:HB3	1:B:435:LEU:HD22	1.58	0.85
1:A:259:ALA:HA	1:A:485:ARG:HH12	1.42	0.85
1:B:394:TRP:CD1	1:B:404:GLY:HA3	2.12	0.85
1:B:945:ARG:NH2	1:B:946:ALA:HB2	1.91	0.85
1:A:1024:VAL:O	1:A:1028:GLN:HG3	1.76	0.85
1:B:149:GLU:HA	1:B:230:ARG:NH2	1.92	0.84
1:A:65:THR:HG21	1:A:70:LEU:CD2	2.06	0.84
1:B:74:MSE:CE	1:B:122:LEU:HD21	2.06	0.84
1:B:738:LYS:HA	1:B:741:MSE:CE	2.07	0.84
1:B:729:ALA:CA	1:B:732:LYS:HD3	2.08	0.84
1:B:807:ASN:ND2	1:B:807:ASN:N	2.25	0.84
1:B:533:MSE:HE1	1:B:541:LEU:HD12	1.60	0.84
1:B:40:LEU:O	1:B:43:PRO:HD2	1.78	0.84
1:A:266:MSE:HG3	1:A:309:VAL:HG22	1.60	0.83
1:B:924:LYS:HZ1	1:B:1061:LYS:HE3	1.42	0.83
1:A:917:ASN:HA	1:A:1056:LEU:HD23	1.59	0.83
1:A:289:ALA:HB3	1:A:339:ARG:HH12	1.43	0.83
1:A:933:MSE:HG3	1:A:950:CYS:SG	2.18	0.83
1:B:441:LEU:HD23	1:B:441:LEU:H	1.42	0.82

*Continued on next page...*

*Continued from previous page...*

Atom-1	Atom-2	Interatomic distance (Å)	Clash overlap (Å)
1:B:14:GLU:HA	1:B:997:ILE:HD11	1.60	0.82
1:B:448:LEU:HA	1:B:451:GLN:CG	2.09	0.82
1:A:37:ILE:HD13	1:A:105:ARG:HG2	1.61	0.82
1:B:47:VAL:HG12	1:B:115:ILE:HD13	1.60	0.82
1:A:276:LYS:HE3	1:A:301:GLN:NE2	1.94	0.82
1:A:74:MSE:HE3	1:A:122:LEU:CD2	2.06	0.82
1:A:143:GLU:O	1:A:146:THR:HB	1.78	0.82
1:A:276:LYS:HE3	1:A:301:GLN:HE21	1.42	0.82
1:B:644:ALA:CB	1:B:709:MSE:HE2	2.09	0.82
1:A:448:LEU:HA	1:A:451:GLN:HG2	1.60	0.82
1:B:444:LYS:HB2	1:B:444:LYS:HZ2	1.43	0.82
1:B:75:PRO:HA	1:B:78:PHE:CE2	2.15	0.81
1:A:27:HIS:NE2	1:A:109:ILE:HB	1.94	0.81
1:B:936:LEU:HB3	1:B:943:THR:CG2	2.10	0.81
1:A:179:GLN:HA	1:A:182:LEU:HD22	1.63	0.81
1:A:297[B]:GLN:HG2	1:A:298:ALA:N	1.96	0.81
1:B:205:LEU:HB2	1:B:237:MSE:HE1	1.62	0.81
1:B:297:GLN:NE2	1:B:297:GLN:HA	1.94	0.81
1:A:732:LYS:CE	1:A:736:LYS:HE2	2.09	0.80
1:A:936:LEU:HB3	1:A:943:THR:CG2	2.10	0.80
1:A:836:GLN:NE2	1:A:837:PRO:HD2	1.96	0.80
1:B:594:GLU:O	1:B:598:VAL:HG23	1.82	0.80
1:B:53:ASN:O	1:B:57:VAL:HG22	1.81	0.80
1:B:563:GLU:HG3	1:B:564:GLY:N	1.96	0.80
1:B:216:LYS:HB2	1:B:223:ILE:CG2	2.11	0.80
1:B:506:ASN:HB2	1:B:509:VAL:HG13	1.64	0.80
1:B:932:GLU:HB2	2:B:1132:HOH:O	1.82	0.80
1:A:671:LEU:HD23	1:A:671:LEU:H	1.47	0.80
1:A:811:PRO:CB	1:A:815:LYS:HE2	2.12	0.79
1:A:708:LYS:O	1:A:712:LEU:HG	1.83	0.79
1:B:653:ALA:O	1:B:655:LYS:N	2.15	0.79
1:B:20:ILE:HD11	1:B:115:ILE:CG1	2.04	0.79
1:B:20:ILE:CD1	1:B:115:ILE:HG12	2.04	0.79
1:B:529:LEU:O	1:B:532:VAL:HG12	1.82	0.79
1:B:654:ASN:HB2	1:B:657:THR:CG2	2.12	0.79
1:A:215:THR:HG22	1:A:223:ILE:CG1	2.11	0.79
1:A:220:ASN:HD22	1:A:220:ASN:N	1.78	0.79
1:B:546:ASP:O	1:B:550[A]:GLN:HG3	1.82	0.79
1:A:547:ARG:O	1:A:551:LEU:HD23	1.83	0.79
1:A:793:THR:HG23	1:A:824:ILE:HG12	1.64	0.79
1:A:152:GLU:HB3	1:A:216:LYS:NZ	1.97	0.79

*Continued on next page...*

*Continued from previous page...*

Atom-1	Atom-2	Interatomic distance (Å)	Clash overlap (Å)
1:B:116:LEU:HD13	1:B:1001:VAL:CG2	2.13	0.79
1:B:895:ASN:HB2	1:B:937:VAL:HG11	1.63	0.79
1:B:913:SER:CB	1:B:915:LYS:HG3	2.10	0.79
1:A:914:SER:H	1:A:915:LYS:HE2	1.47	0.79
1:A:149:GLU:HA	1:A:230:ARG:NH2	1.99	0.78
1:A:944:LYS:HD3	1:A:1007:GLY:HA2	1.63	0.78
1:B:127:ASP:O	1:B:131:VAL:HG23	1.82	0.78
1:B:635:ASN:O	1:B:639:LYS:HE3	1.83	0.78
1:A:205:LEU:HB2	1:A:237:MSE:HE1	1.66	0.78
1:B:113:ARG:HB3	1:B:1004:THR:HG21	1.62	0.78
1:B:341[B]:ARG:HG3	1:B:343:GLN:CD	2.04	0.78
1:B:512:ARG:CB	1:B:512:ARG:HH11	1.95	0.78
1:B:113:ARG:HD2	1:B:1004:THR:HG23	1.64	0.78
1:B:324:THR:HG21	1:B:363:LEU:HG	1.62	0.78
1:A:75:PRO:HB2	1:A:76:PRO:HD3	1.65	0.78
1:B:247:VAL:HA	1:B:250:LEU:HD13	1.64	0.78
1:B:1024:VAL:O	1:B:1028:GLN:HG3	1.82	0.78
1:B:153:THR:HB	1:B:156:ASP:CB	2.06	0.78
1:B:770:GLU:HG2	1:B:835:PHE:CE1	2.18	0.78
1:A:529:LEU:O	1:A:532:VAL:HG12	1.84	0.78
1:A:608:LEU:HD23	1:A:629:ARG:CZ	2.14	0.78
1:B:202:LEU:HB3	1:B:203:PRO:HD3	1.65	0.78
1:B:836:GLN:NE2	1:B:837:PRO:HD2	1.99	0.78
1:A:283:TRP:HH2	1:A:336:ALA:HB2	1.48	0.78
1:B:729:ALA:HA	1:B:732:LYS:CD	2.10	0.78
1:A:4:PHE:HZ	1:A:998:LEU:HD21	1.49	0.77
1:A:429:ASP:O	1:A:433:ARG:HG2	1.83	0.77
1:B:563:GLU:HG3	1:B:565:GLU:H	1.48	0.77
1:B:741:MSE:HA	1:B:808:ILE:HD13	1.65	0.77
1:B:86:THR:O	1:B:90:GLN:HG2	1.84	0.77
1:A:635:ASN:O	1:A:639:LYS:HE3	1.84	0.77
1:A:316:LYS:O	1:A:320:GLU:HG3	1.85	0.77
1:A:880:GLU:HG3	1:A:915:LYS:CE	2.13	0.77
1:A:906:HIS:HB2	1:A:927:ALA:HB1	1.65	0.77
1:A:913:SER:HB2	1:A:915:LYS:CG	2.13	0.77
1:A:1045:SER:O	1:A:1048:ILE:HD12	1.84	0.77
1:B:216:LYS:HB2	1:B:223:ILE:HG21	1.63	0.77
1:B:789:GLU:HG2	1:B:830:LYS:NZ	1.99	0.77
1:B:211:ILE:CG1	1:B:690:ALA:O	2.31	0.77
1:B:457:PRO:CD	1:B:460:ARG:HG3	2.15	0.77
1:A:127:ASP:O	1:A:131:VAL:HG23	1.84	0.77

*Continued on next page...*

*Continued from previous page...*

Atom-1	Atom-2	Interatomic distance (Å)	Clash overlap (Å)
1:B:1057:ARG:HG2	1:B:1057:ARG:HH11	1.49	0.76
1:B:4:PHE:HZ	1:B:998:LEU:HD21	1.50	0.76
1:B:760:ALA:CB	1:B:794:ILE:HD11	2.16	0.76
1:A:7:ARG:HG3	1:A:7:ARG:HH11	1.51	0.76
1:A:94:MSE:HG3	1:A:104:ALA:HB1	1.67	0.76
1:A:958:SER:HB3	2:A:1089:HOH:O	1.84	0.76
1:B:8:THR:O	1:B:12:ILE:HG13	1.86	0.76
1:B:776:ASP:O	1:B:780:ARG:HG3	1.85	0.76
1:A:550:GLN:O	1:A:554:GLN:HG3	1.84	0.76
1:B:424:ASP:HB3	1:B:427:GLU:HG2	1.66	0.76
1:B:897:PRO:HB2	1:B:1024:VAL:CG1	2.16	0.76
1:B:944:LYS:HE2	1:B:1006:LEU:O	1.85	0.76
1:A:555:LEU:HD23	1:A:555:LEU:O	1.86	0.76
1:A:568:GLN:HE21	1:A:568:GLN:H	1.33	0.76
1:B:495:GLY:O	1:B:499:GLN:HG3	1.86	0.76
1:B:653:ALA:HB1	1:B:658:VAL:HG23	1.68	0.76
1:A:40:LEU:HB2	1:A:43:PRO:HG2	1.67	0.75
1:A:506:ASN:HB2	1:A:509:VAL:HG13	1.67	0.75
1:A:906:HIS:CE1	1:A:910:ARG:HG3	2.21	0.75
1:B:29:GLU:HG2	1:B:945:ARG:HD3	1.67	0.75
1:B:563:GLU:CG	1:B:565:GLU:H	1.98	0.75
1:B:31:GLU:HG3	1:B:105:ARG:CZ	2.16	0.75
1:B:398:PRO:HB3	1:B:454:GLY:O	1.85	0.75
1:B:149:GLU:HA	1:B:230:ARG:CZ	2.16	0.75
1:A:287:PRO:HG3	1:A:350:MSE:HG2	1.68	0.75
1:B:59:LYS:HA	1:B:62:VAL:CG2	2.16	0.75
1:A:795:SER:O	1:A:798:VAL:HG22	1.87	0.75
1:A:37:ILE:HB	1:A:95:LEU:HD11	1.69	0.74
1:A:109:ILE:HD13	1:A:1008[B]:ARG:NH2	2.02	0.74
1:A:1032:GLN:HA	1:A:1035:LYS:HD2	1.69	0.74
1:B:28:GLU:OE1	1:B:942:GLY:HA2	1.85	0.74
1:A:702:TRP:CZ3	1:A:706:VAL:HG21	2.22	0.74
1:B:225:GLU:HB3	1:B:681:ILE:HG13	1.68	0.74
1:B:921:ALA:O	1:B:925:ARG:HG3	1.87	0.74
1:A:898:MSE:HE1	1:A:1023:LEU:CD2	2.13	0.74
1:B:507:PRO:CG	1:B:555:LEU:HD21	2.17	0.74
1:B:811:PRO:HB3	1:B:815:LYS:HE2	1.69	0.74
1:A:205:LEU:HD13	1:A:234:VAL:HG23	1.68	0.74
1:B:666:LYS:HE2	1:B:670:GLU:OE2	1.87	0.74
1:B:94:MSE:CE	1:B:104:ALA:HB2	2.18	0.74
1:B:793:THR:CG2	1:B:824:ILE:HG12	2.17	0.74

*Continued on next page...*



*Continued from previous page...*

Atom-1	Atom-2	Interatomic distance (Å)	Clash overlap (Å)
1:B:25:ILE:CG2	1:B:945:ARG:HG3	2.17	0.74
1:B:511:ASP:O	1:B:512:ARG:HB2	1.86	0.74
1:A:51:VAL:O	1:A:55:VAL:HG23	1.87	0.74
1:B:74:MSE:HE2	1:B:78:PHE:CZ	2.23	0.73
1:A:256:ASP:HB3	1:A:259:ALA:HB2	1.67	0.73
1:A:798:VAL:O	1:A:802:LYS:HG3	1.88	0.73
1:B:154:MSE:HE1	1:B:158:VAL:HG23	1.70	0.73
1:B:143:GLU:O	1:B:146:THR:HB	1.88	0.73
1:B:301:GLN:O	1:B:305:GLU:HG2	1.88	0.73
1:A:40:LEU:CB	1:A:43:PRO:HG2	2.17	0.73
1:A:75:PRO:HA	1:A:78:PHE:CE2	2.24	0.73
1:A:444:LYS:HZ2	1:A:444:LYS:HB2	1.53	0.73
1:A:447:ASP:HA	1:A:450:ARG:HH11	1.52	0.73
1:A:506:ASN:CB	1:A:509:VAL:HG13	2.18	0.73
1:A:670:GLU:O	1:A:673:PRO:HD2	1.89	0.73
1:A:793:THR:HG23	1:A:824:ILE:CG1	2.19	0.73
1:B:895:ASN:CB	1:B:937:VAL:HG11	2.19	0.73
1:A:738:LYS:HA	1:A:741:MSE:HE2	1.71	0.73
1:A:147:VAL:O	1:A:150:VAL:HG12	1.88	0.73
1:B:272:SER:O	1:B:276:LYS:HG3	1.89	0.73
1:A:608:LEU:HD23	1:A:629:ARG:NH2	2.03	0.73
1:B:142:LEU:HD23	1:B:238:SER:HB3	1.70	0.73
1:B:318:ARG:O	1:B:322:LEU:HG	1.87	0.73
1:B:394:TRP:HE1	1:B:401:GLY:N	1.87	0.73
1:A:53:ASN:HB3	1:B:288:SER:CB	2.18	0.73
1:A:202:LEU:HB3	1:A:203:PRO:HD3	1.71	0.73
1:B:152:GLU:HB3	1:B:216:LYS:NZ	2.04	0.73
1:B:908:GLU:O	1:B:911:LYS:HG3	1.89	0.73
1:B:65:THR:HG21	1:B:70:LEU:CD2	2.10	0.72
1:B:154:MSE:O	1:B:154:MSE:HE3	1.88	0.72
1:B:558:LEU:CD2	1:B:569:ALA:HB2	2.19	0.72
1:B:744:ILE:HA	1:B:808:ILE:HG21	1.70	0.72
1:A:201:LEU:HB3	1:A:237:MSE:HE2	1.70	0.72
1:A:281:LYS:HA	1:A:284:LEU:CD1	2.16	0.72
1:B:158:VAL:HG13	1:B:162:LYS:CE	2.19	0.72
1:B:201:LEU:HB3	1:B:237:MSE:HE2	1.71	0.72
1:A:448:LEU:HA	1:A:451:GLN:CG	2.17	0.72
1:A:511:ASP:O	1:A:512:ARG:HB2	1.88	0.72
1:B:824:ILE:O	1:B:828:VAL:HG13	1.89	0.72
1:B:911:LYS:O	1:B:1060:ARG:HG2	1.89	0.72
1:A:780:ARG:O	1:A:784:LYS:HB2	1.89	0.72

*Continued on next page...*

*Continued from previous page...*

Atom-1	Atom-2	Interatomic distance (Å)	Clash overlap (Å)
1:B:27:HIS:NE2	1:B:108:LEU:HB3	2.04	0.72
1:B:665:VAL:HG22	1:B:709:MSE:CE	2.19	0.72
1:A:225:GLU:OE1	1:A:677:SER:HB2	1.89	0.72
1:A:908:GLU:O	1:A:911:LYS:HG3	1.90	0.72
1:B:398:PRO:HB3	1:B:460:ARG:HH21	1.52	0.72
1:B:737:CYS:HG	1:B:817:PHE:HZ	1.36	0.72
1:A:209:MSE:O	1:A:213:VAL:HG23	1.89	0.72
1:A:769:ARG:NH1	1:A:976:ARG:NH2	2.37	0.72
1:B:445:LEU:HD21	1:B:449:ARG:NE	2.05	0.72
1:B:898:MSE:HE1	1:B:1023:LEU:CG	2.20	0.72
1:A:744:ILE:HA	1:A:808:ILE:HG21	1.72	0.72
1:B:215:THR:CG2	1:B:223:ILE:HG13	2.14	0.72
1:B:269:ALA:O	1:B:273:ILE:HG13	1.90	0.72
1:B:506:ASN:CB	1:B:509:VAL:HG13	2.20	0.72
1:A:37:ILE:CD1	1:A:105:ARG:HE	2.03	0.71
1:B:277:LEU:O	1:B:281:LYS:HG3	1.90	0.71
1:A:718:ASP:HB3	1:A:721:SER:OG	1.90	0.71
1:B:115:ILE:O	1:B:119:THR:HG23	1.90	0.71
1:B:211:ILE:HG21	1:B:681:ILE:HD13	1.72	0.71
1:B:266:MSE:HG3	1:B:309:VAL:HG22	1.70	0.71
1:B:906:HIS:HB2	1:B:927:ALA:CB	2.20	0.71
1:A:498:GLU:HG2	1:A:499:GLN:N	2.05	0.71
1:A:589:GLU:O	1:A:593:GLN:HG2	1.90	0.71
1:A:960:GLU:O	1:A:964:LEU:HG	1.91	0.71
1:B:324:THR:CG2	1:B:363:LEU:HG	2.20	0.71
1:A:86:THR:O	1:A:90:GLN:HG2	1.89	0.71
1:A:776:ASP:O	1:A:780:ARG:HG3	1.90	0.71
1:B:660:GLY:O	1:B:663:ALA:HB3	1.90	0.71
1:A:457:PRO:HB3	1:A:460:ARG:HG2	1.73	0.71
1:B:681:ILE:O	1:B:684:ARG:HG3	1.91	0.71
1:B:960:GLU:HG2	1:B:963[B]:ARG:NH2	2.06	0.71
1:A:434:SER:O	1:A:437:GLU:HG2	1.90	0.71
1:B:51:VAL:O	1:B:55:VAL:HG23	1.91	0.71
1:B:383:SER:OG	1:B:387:LYS:HE2	1.90	0.71
1:B:731:LYS:HG3	1:B:825:LEU:HD11	1.71	0.71
1:A:269:ALA:O	1:A:273:ILE:HG13	1.91	0.71
1:A:944:LYS:HD3	1:A:1007:GLY:CA	2.20	0.71
1:B:211:ILE:HD11	1:B:691:ALA:HA	1.73	0.71
1:B:281:LYS:HA	1:B:284:LEU:CD1	2.21	0.71
1:B:504:ILE:CD1	1:B:576:LEU:HD23	2.20	0.71
1:B:1045:SER:O	1:B:1048:ILE:HG13	1.91	0.71

*Continued on next page...*

*Continued from previous page...*

Atom-1	Atom-2	Interatomic distance (Å)	Clash overlap (Å)
1:A:87:LYS:HE2	1:A:107:TYR:HA	1.73	0.70
1:A:398:PRO:O	1:A:449:ARG:HG2	1.91	0.70
1:B:17:ALA:O	1:B:1000:THR:HG21	1.90	0.70
1:B:793:THR:HG23	1:B:824:ILE:CG1	2.20	0.70
1:B:960:GLU:O	1:B:964:LEU:HG	1.91	0.70
1:A:124:LEU:HD12	1:A:124:LEU:O	1.92	0.70
1:A:158:VAL:HG13	1:A:162:LYS:CE	2.19	0.70
1:A:154:MSE:O	1:A:154:MSE:HE3	1.91	0.70
1:A:789:GLU:HG2	1:A:830:LYS:HZ2	1.53	0.70
1:B:457:PRO:HD2	1:B:460:ARG:HG3	1.73	0.70
1:A:924:LYS:O	1:A:928:LEU:HD12	1.91	0.70
1:B:74:MSE:HG2	1:B:125:THR:HG21	1.73	0.70
1:B:95:LEU:CD1	1:B:104:ALA:HB1	2.22	0.70
1:B:341[B]:ARG:HG3	1:B:343:GLN:NE2	2.07	0.70
1:B:654:ASN:O	1:B:656:SER:N	2.25	0.70
1:B:589:GLU:O	1:B:593:GLN:HG2	1.91	0.70
1:A:113:ARG:HB2	1:A:1004:THR:CG2	2.21	0.70
1:A:812:GLY:N	1:A:815:LYS:HG2	2.06	0.70
1:B:26:MSE:HE3	1:B:40:LEU:HD23	1.73	0.70
1:B:936:LEU:N	1:B:936:LEU:HD23	2.06	0.70
1:A:671:LEU:HD23	1:A:671:LEU:N	2.06	0.70
1:A:530:ALA:HA	1:A:533:MSE:HE3	1.72	0.70
1:B:215:THR:HG22	1:B:223:ILE:CG1	2.12	0.70
1:B:25:ILE:HG22	1:B:945:ARG:HG3	1.72	0.69
1:B:653:ALA:CB	1:B:658:VAL:HG23	2.22	0.69
1:B:665:VAL:HG22	1:B:709:MSE:HE3	1.73	0.69
1:A:152:GLU:HB3	1:A:216:LYS:HZ2	1.55	0.69
1:A:372:ARG:NH1	2:A:1080:HOH:O	2.24	0.69
1:B:507:PRO:HG2	1:B:555:LEU:HD21	1.74	0.69
1:A:1013:ASP:O	1:A:1017:GLU:HG2	1.92	0.69
1:A:28:GLU:HG2	1:A:945:ARG:NE	2.06	0.69
1:A:37:ILE:CD1	1:A:105:ARG:HG2	2.23	0.69
1:A:440:ALA:C	1:A:444:LYS:HD3	2.12	0.69
1:B:608:LEU:HD12	1:B:608:LEU:H	1.57	0.69
1:B:1018:GLN:HG2	1:B:1019:ALA:N	2.05	0.69
1:A:58:GLY:O	1:A:62:VAL:HG22	1.92	0.69
1:A:613:ALA:HA	1:A:683:LEU:HD23	1.73	0.69
1:A:318:ARG:O	1:A:322:LEU:HG	1.93	0.69
1:B:26:MSE:CE	1:B:40:LEU:HD23	2.23	0.69
1:B:124:LEU:O	1:B:124:LEU:HD12	1.92	0.69
1:A:544:LYS:HD2	1:A:586:ARG:NE	2.08	0.69

*Continued on next page...*

*Continued from previous page...*

Atom-1	Atom-2	Interatomic distance (Å)	Clash overlap (Å)
1:A:1054:PHE:H	1:A:1054:PHE:HD1	1.39	0.69
1:B:185:GLN:OE1	1:B:188:ARG:HD3	1.93	0.69
1:B:444:LYS:HB2	1:B:444:LYS:NZ	2.07	0.69
1:B:726:SER:O	1:B:730:ILE:HG13	1.93	0.69
1:B:926:MSE:HE1	1:B:958:SER:HA	1.74	0.69
1:A:936:LEU:HD23	1:A:936:LEU:N	2.07	0.69
1:A:964:LEU:O	1:A:968:VAL:HG23	1.92	0.69
1:B:147:VAL:O	1:B:150:VAL:HG12	1.92	0.69
1:B:441:LEU:HA	1:B:444:LYS:NZ	2.07	0.69
1:B:670:GLU:O	1:B:673:PRO:HD2	1.93	0.68
1:A:444:LYS:NZ	1:A:444:LYS:HB2	2.07	0.68
1:A:613:ALA:HB1	1:A:682:LEU:HD21	1.76	0.68
1:B:457:PRO:O	1:B:460:ARG:HB2	1.93	0.68
1:B:1013:ASP:O	1:B:1017:GLU:HG2	1.92	0.68
1:A:40:LEU:N	1:A:40:LEU:HD23	2.08	0.68
1:A:343:GLN:NE2	2:A:1141:HOH:O	2.27	0.68
1:A:364:THR:O	1:A:368[A]:GLU:HG3	1.93	0.68
1:A:929:LEU:HD11	1:A:953:ASP:HB3	1.76	0.68
1:B:276:LYS:HE3	1:B:301:GLN:NE2	2.07	0.68
1:B:289:ALA:HB3	1:B:339:ARG:HH12	1.58	0.68
1:B:563:GLU:HG3	1:B:564:GLY:H	1.57	0.68
1:A:667:THR:HG23	1:A:671:LEU:HD21	1.76	0.68
1:A:812:GLY:H	1:A:815:LYS:CG	2.06	0.68
1:A:412:LEU:HB3	1:A:435:LEU:HD22	1.76	0.68
1:A:452:GLY:O	1:A:454:GLY:N	2.27	0.68
1:B:498:GLU:HG2	1:B:499:GLN:N	2.06	0.68
1:A:74:MSE:HG2	1:A:125:THR:HG21	1.74	0.68
1:A:318:ARG:HH11	1:A:318:ARG:HG3	1.59	0.68
1:A:381:LYS:HE2	1:A:478:ASN:OD1	1.93	0.68
1:A:960:GLU:HG2	1:A:963:ARG:NH2	2.08	0.68
1:B:330:GLN:O	1:B:333:ASP:HB2	1.94	0.68
1:B:408:ILE:O	1:B:412:LEU:HG	1.94	0.68
1:B:895:ASN:HB2	1:B:937:VAL:CG1	2.23	0.68
1:A:1048:ILE:HD13	1:A:1048:ILE:O	1.95	0.67
1:B:233:THR:HG22	1:B:237:MSE:HE3	1.76	0.67
1:B:943:THR:O	1:B:945:ARG:N	2.27	0.67
1:B:47:VAL:HG12	1:B:115:ILE:CD1	2.24	0.67
1:B:74:MSE:HE3	1:B:122:LEU:CD2	2.23	0.67
1:B:1050:THR:O	1:B:1052:ALA:N	2.27	0.67
1:A:563:GLU:HB3	1:A:566:SER:OG	1.94	0.67
1:B:924:LYS:HZ1	1:B:1061:LYS:CE	2.07	0.67

*Continued on next page...*

*Continued from previous page...*

Atom-1	Atom-2	Interatomic distance (Å)	Clash overlap (Å)
1:A:37:ILE:HB	1:A:95:LEU:CD1	2.24	0.67
1:A:95:LEU:HD13	1:A:99:PRO:HA	1.75	0.67
1:A:533:MSE:CE	1:A:541:LEU:HD12	2.24	0.67
1:B:671:LEU:HD23	1:B:671:LEU:N	2.07	0.67
1:A:75:PRO:HA	1:A:78:PHE:HD2	1.53	0.67
1:A:153:THR:HG22	1:A:154:MSE:N	2.08	0.67
1:A:283:TRP:CH2	1:A:336:ALA:HB2	2.29	0.67
1:A:403:GLU:CD	1:A:403:GLU:H	1.98	0.67
1:B:47:VAL:CG1	1:B:115:ILE:HD13	2.23	0.67
1:B:124:LEU:O	1:B:128:GLU:HG3	1.95	0.67
1:B:756:ILE:CG2	1:B:797:MSE:HE2	2.24	0.67
1:A:263:THR:HG21	1:A:378:THR:OG1	1.94	0.67
1:A:793:THR:HG21	1:A:824:ILE:HA	1.75	0.67
1:B:129:ALA:O	1:B:133:LYS:HE3	1.95	0.67
1:A:27:HIS:HE2	1:A:109:ILE:HB	1.58	0.67
1:B:654:ASN:HB2	1:B:657:THR:HG23	1.76	0.67
1:A:215:THR:CG2	1:A:223:ILE:HG13	2.21	0.67
1:A:926:MSE:HE1	1:A:958:SER:HA	1.76	0.67
1:B:70:LEU:O	1:B:74:MSE:HB2	1.94	0.67
1:B:75:PRO:HA	1:B:78:PHE:HD2	1.57	0.67
1:A:149:GLU:HA	1:A:230:ARG:CZ	2.25	0.67
1:A:551:LEU:HB2	1:A:576:LEU:HD13	1.77	0.67
1:A:812:GLY:H	1:A:815:LYS:HG2	1.59	0.67
1:B:153:THR:HG22	1:B:154:MSE:N	2.09	0.67
1:A:87:LYS:CE	1:A:107:TYR:HA	2.24	0.67
1:A:887:GLU:HB3	1:A:903:ARG:HH21	1.60	0.67
1:B:454:GLY:O	1:B:460:ARG:NE	2.27	0.67
1:B:930:MSE:HG3	1:B:1031:MSE:SE	2.44	0.67
1:B:283:TRP:HH2	1:B:336:ALA:HB2	1.58	0.66
1:B:398:PRO:O	1:B:449:ARG:HG2	1.94	0.66
1:B:717:ILE:HG21	1:B:722:LEU:HB2	1.77	0.66
1:A:811:PRO:HB3	1:A:815:LYS:CE	2.23	0.66
1:A:893:VAL:HG22	1:A:938:ARG:HD3	1.76	0.66
1:B:566:SER:HB3	1:B:567:PRO:HD2	1.77	0.66
1:B:613:ALA:CB	1:B:682:LEU:HD12	2.21	0.66
1:B:812:GLY:N	1:B:815:LYS:HG2	2.10	0.66
1:A:47:VAL:HG12	1:A:115:ILE:HD13	1.76	0.66
1:A:807:ASN:HB3	1:A:810:ASP:CB	2.20	0.66
1:B:236:LYS:N	1:B:236:LYS:HE3	2.10	0.66
1:B:839:GLU:OE1	1:B:839:GLU:HA	1.95	0.66
1:A:898:MSE:CE	1:A:1024:VAL:HA	2.25	0.66

*Continued on next page...*

*Continued from previous page...*

Atom-1	Atom-2	Interatomic distance (Å)	Clash overlap (Å)
1:B:336:ALA:HA	1:B:339:ARG:HD2	1.76	0.66
1:B:684:ARG:NE	1:B:684:ARG:O	2.28	0.66
1:A:327:MSE:O	1:A:331:MSE:HG3	1.95	0.66
1:B:316:LYS:O	1:B:320:GLU:HG3	1.95	0.66
1:B:406:GLU:OE1	1:B:409:ARG:NH1	2.28	0.66
1:B:658:VAL:HG13	1:B:662:GLN:NE2	2.11	0.66
1:A:644:ALA:HB2	1:A:709:MSE:HE2	1.77	0.66
1:A:943:THR:O	1:A:945:ARG:N	2.29	0.66
1:B:40:LEU:HD22	1:B:44:VAL:HG23	1.77	0.66
1:B:58:GLY:O	1:B:62:VAL:HG22	1.95	0.66
1:B:717:ILE:CG2	1:B:722:LEU:HB2	2.26	0.66
1:B:910:ARG:HD3	2:B:1167:HOH:O	1.94	0.66
1:A:289:ALA:HB3	1:A:339:ARG:NH1	2.10	0.66
1:A:490:ALA:O	1:A:496:LYS:HE3	1.95	0.66
1:B:364:THR:O	1:B:368:GLU:HG3	1.96	0.66
1:B:772:GLU:O	1:B:975:LYS:NZ	2.29	0.66
1:B:1:MSE:HE1	1:B:1018:GLN:HE22	1.57	0.66
1:B:457:PRO:HG2	1:B:460:ARG:CG	2.26	0.65
1:B:512:ARG:HH11	1:B:512:ARG:CG	2.08	0.65
1:B:554:GLN:NE2	2:B:1176:HOH:O	2.29	0.65
1:A:233:THR:CG2	1:A:237:MSE:HE3	2.26	0.65
1:A:422:CYS:O	1:A:428:ARG:NH2	2.29	0.65
1:B:65:THR:CG2	1:B:70:LEU:HD22	2.14	0.65
1:B:317:GLU:O	1:B:321:ILE:HG13	1.96	0.65
1:A:608:LEU:H	1:A:608:LEU:HD12	1.61	0.65
1:A:1004:THR:O	1:A:1008[B]:ARG:NH2	2.29	0.65
1:B:760:ALA:HB3	1:B:794:ILE:HD11	1.78	0.65
1:A:613:ALA:HB1	1:A:682:LEU:CD2	2.25	0.65
1:B:27:HIS:NE2	1:B:108:LEU:HD23	2.11	0.65
1:B:266:MSE:HE3	1:B:309:VAL:HG13	1.78	0.65
1:A:660:GLY:O	1:A:663:ALA:HB3	1.96	0.65
1:A:20:ILE:O	1:A:24:VAL:HG23	1.97	0.65
1:A:500:ALA:O	1:A:504:ILE:HG12	1.96	0.65
1:B:16:VAL:HG12	1:B:17:ALA:N	2.10	0.65
1:B:22:HIS:HA	1:B:25:ILE:CD1	2.26	0.65
1:B:297:GLN:NE2	2:B:1099:HOH:O	2.29	0.65
1:B:459:ALA:O	1:B:462:LEU:HB2	1.96	0.65
1:A:626:PHE:CZ	1:A:680:ARG:HG2	2.32	0.65
1:A:635:ASN:C	1:A:639:LYS:HE3	2.16	0.65
1:B:62:VAL:HA	1:B:70:LEU:HD21	1.77	0.65
1:B:186:GLU:O	1:B:190:MSE:HG3	1.97	0.65

*Continued on next page...*

*Continued from previous page...*

Atom-1	Atom-2	Interatomic distance (Å)	Clash overlap (Å)
1:B:216:LYS:N	1:B:223:ILE:HG12	2.11	0.65
1:B:266:MSE:CE	1:B:309:VAL:HG13	2.27	0.65
1:B:628:GLU:O	1:B:632:ASN:ND2	2.30	0.65
1:A:319:ARG:HD3	2:A:1134:HOH:O	1.96	0.65
1:A:589:GLU:HG2	1:A:593:GLN:NE2	2.09	0.65
1:B:343:GLN:N	1:B:343:GLN:OE1	2.29	0.65
1:B:544:LYS:HD2	1:B:586:ARG:NE	2.10	0.65
1:B:760:ALA:HB1	1:B:794:ILE:HD11	1.78	0.65
1:A:53:ASN:O	1:A:57:VAL:HG22	1.97	0.65
1:A:205:LEU:O	1:A:209:MSE:HG3	1.97	0.65
1:A:256:ASP:OD1	1:A:485:ARG:NH2	2.29	0.65
1:B:547:ARG:NH2	1:B:575:GLN:HG2	2.12	0.65
1:B:719:THR:HG22	1:B:723:LEU:CD2	2.26	0.65
1:B:960:GLU:HG2	1:B:963[A]:ARG:HH21	1.62	0.65
1:A:91:ALA:HB2	1:A:107:TYR:CB	2.27	0.65
1:A:880:GLU:HG3	1:A:915:LYS:HD2	1.78	0.65
1:B:40:LEU:HD22	1:B:43:PRO:HG2	1.79	0.65
1:B:207:SER:HB3	1:B:694:HIS:CE1	2.31	0.65
1:B:533:MSE:HE3	1:B:541:LEU:HD12	1.78	0.65
1:B:608:LEU:HD23	1:B:629:ARG:NH2	2.12	0.65
1:B:733:ASP:OD2	1:B:759:ARG:NH1	2.29	0.65
1:A:37:ILE:HD12	1:A:105:ARG:HE	1.62	0.64
1:B:441:LEU:HA	1:B:444:LYS:HZ2	1.60	0.64
1:B:644:ALA:HB3	1:B:709:MSE:HE2	1.79	0.64
1:B:1005:MSE:CE	1:B:1015:GLU:HG2	2.26	0.64
1:A:74:MSE:O	1:A:77:ALA:HB3	1.97	0.64
1:A:403:GLU:O	1:A:406:GLU:N	2.30	0.64
1:B:403:GLU:H	1:B:403:GLU:CD	2.01	0.64
1:B:589:GLU:HG2	1:B:593:GLN:NE2	2.06	0.64
1:B:667:THR:CG2	1:B:671:LEU:HD21	2.26	0.64
1:B:793:THR:HG21	1:B:824:ILE:HA	1.78	0.64
1:A:27:HIS:ND1	2:A:1154:HOH:O	2.30	0.64
1:A:409[B]:ARG:HH22	1:A:442:THR:HB	1.60	0.64
1:A:512:ARG:CB	1:A:512:ARG:HH11	2.11	0.64
1:A:566:SER:HB3	1:A:567:PRO:HD2	1.80	0.64
1:A:594:GLU:O	1:A:598:VAL:HG23	1.98	0.64
1:B:440:ALA:O	1:B:443:SER:N	2.30	0.64
1:B:789:GLU:HG2	1:B:830:LYS:HZ1	1.62	0.64
1:A:211:ILE:HD11	1:A:690:ALA:O	1.96	0.64
1:A:898:MSE:HE3	1:A:1024:VAL:HG22	1.78	0.64
1:A:944:LYS:CD	1:A:1007:GLY:HA2	2.27	0.64

*Continued on next page...*



*Continued from previous page...*

Atom-1	Atom-2	Interatomic distance (Å)	Clash overlap (Å)
1:B:812:GLY:H	1:B:815:LYS:CG	2.10	0.64
1:B:898:MSE:CE	1:B:1023:LEU:HD23	2.24	0.64
1:A:287:PRO:HB3	1:A:344:GLY:O	1.96	0.64
1:B:635:ASN:C	1:B:639:LYS:HE3	2.17	0.64
1:B:798:VAL:O	1:B:802:LYS:HG3	1.97	0.64
1:A:62:VAL:HA	1:A:70:LEU:HD21	1.79	0.64
1:A:815:LYS:O	1:A:819:ASP:HB3	1.97	0.64
1:B:815:LYS:O	1:B:819:ASP:HB3	1.98	0.64
1:A:266:MSE:HE3	1:A:309:VAL:HG13	1.80	0.64
1:A:619:ALA:O	1:A:622:ARG:HB2	1.98	0.64
1:A:756:ILE:CG2	1:A:797:MSE:HE2	2.27	0.64
1:B:341[B]:ARG:NE	1:B:343:GLN:NE2	2.46	0.64
1:B:837:PRO:O	1:B:839:GLU:N	2.31	0.64
1:A:158:VAL:O	1:A:162:LYS:HG3	1.97	0.64
1:A:247:VAL:HA	1:A:250:LEU:HD13	1.79	0.64
1:A:281:LYS:NZ	1:A:361:ASP:OD2	2.31	0.64
1:B:209:MSE:O	1:B:212:PHE:HB3	1.98	0.64
1:B:412:LEU:N	1:B:412:LEU:HD23	2.12	0.64
1:B:564:GLY:HA2	1:B:569:ALA:HB1	1.79	0.64
1:B:1057:ARG:HG2	1:B:1057:ARG:NH1	2.13	0.64
1:B:207:SER:OG	1:B:694:HIS:ND1	2.29	0.64
1:A:1:MSE:HB2	1:A:1018:GLN:CD	2.18	0.64
1:B:1014:GLU:HA	1:B:1017:GLU:CG	2.27	0.64
1:B:281:LYS:NZ	1:B:361:ASP:OD2	2.31	0.63
1:B:708:LYS:O	1:B:712:LEU:HG	1.98	0.63
1:A:152:GLU:O	1:A:213:VAL:HG13	1.98	0.63
1:A:449:ARG:HA	1:A:453:LYS:HA	1.80	0.63
1:B:795:SER:OG	1:B:796:PRO:HD3	1.98	0.63
1:A:108:LEU:O	1:A:112:SER:N	2.32	0.63
1:A:233:THR:HG22	1:A:237:MSE:HE3	1.79	0.63
1:B:28:GLU:HG2	1:B:944:LYS:HB2	1.80	0.63
1:B:83:ASN:OD1	1:B:83:ASN:N	2.31	0.63
1:B:901:ALA:HB1	1:B:1031:MSE:HG3	1.79	0.63
1:A:453:LYS:HD2	1:A:453:LYS:N	2.10	0.63
1:B:682:LEU:O	1:B:682:LEU:HD22	1.98	0.63
1:A:18:GLN:NE2	1:A:22[B]:HIS:NE2	2.47	0.63
1:A:448:LEU:CD1	1:A:448:LEU:H	2.11	0.63
1:A:633:PHE:CD2	1:A:676:VAL:HG23	2.32	0.63
1:B:236:LYS:HE3	1:B:236:LYS:CA	2.29	0.63
1:B:257:ALA:HB2	2:B:1115:HOH:O	1.97	0.63
1:B:718:ASP:HB3	1:B:721:SER:OG	1.99	0.63

*Continued on next page...*



*Continued from previous page...*

Atom-1	Atom-2	Interatomic distance (Å)	Clash overlap (Å)
1:B:505:ASP:C	1:B:507:PRO:HD3	2.18	0.63
1:B:811:PRO:CB	1:B:815:LYS:HE2	2.28	0.63
1:B:394:TRP:CG	1:B:404:GLY:HA3	2.34	0.63
1:B:734:LEU:O	1:B:738:LYS:HG3	1.98	0.63
1:B:335:VAL:HG12	1:B:336:ALA:N	2.14	0.63
1:A:266:MSE:CE	1:A:309:VAL:HG13	2.29	0.63
1:A:880:GLU:HG3	1:A:915:LYS:NZ	2.14	0.63
1:B:318:ARG:HH11	1:B:318:ARG:HG3	1.63	0.63
1:B:441:LEU:HD23	1:B:441:LEU:N	2.14	0.63
1:B:499:GLN:NE2	1:B:514:VAL:HG11	2.14	0.63
1:B:731:LYS:HG3	1:B:825:LEU:CD1	2.29	0.63
1:B:905:LEU:HD12	1:B:1031:MSE:SE	2.49	0.63
1:A:258:TRP:HB3	1:A:488:LYS:HE2	1.81	0.62
1:A:812:GLY:CA	1:A:815:LYS:HG2	2.28	0.62
1:B:440:ALA:C	1:B:444:LYS:HD3	2.19	0.62
1:B:667:THR:O	1:B:670:GLU:N	2.26	0.62
1:A:833:GLU:O	1:A:835:PHE:N	2.32	0.62
1:B:14:GLU:N	1:B:15:PRO:HD2	2.14	0.62
1:B:70:LEU:HG	1:B:74:MSE:HG3	1.81	0.62
1:B:907:ASP:O	1:B:910:ARG:HG3	1.98	0.62
1:A:947:LEU:O	1:A:947:LEU:HD22	1.99	0.62
1:B:59:LYS:HA	1:B:62:VAL:HG23	1.81	0.62
1:A:22[A]:HIS:HD2	1:A:23:LEU:HD23	1.63	0.62
1:B:29:GLU:CG	1:B:945:ARG:HD3	2.30	0.62
1:B:215:THR:HG21	1:B:222:GLY:CA	2.29	0.62
1:B:886:PRO:CG	1:B:928:LEU:HD23	2.29	0.62
1:A:2:PRO:O	1:A:1022:MSE:HE1	2.00	0.62
1:A:610:ALA:HA	1:A:695:PHE:CZ	2.35	0.62
1:B:283:TRP:CZ2	1:B:296:GLU:HG2	2.33	0.62
1:B:347:PRO:HA	1:B:350:MSE:HE1	1.82	0.62
1:B:551:LEU:HB2	1:B:576:LEU:HD13	1.80	0.62
1:A:70:LEU:O	1:A:74:MSE:HB2	1.99	0.62
1:A:91:ALA:HB2	1:A:107:TYR:HB3	1.82	0.62
1:A:109:ILE:CD1	1:A:1008[B]:ARG:HH21	2.10	0.62
1:A:283:TRP:CZ2	1:A:296:GLU:HG2	2.34	0.62
1:A:613:ALA:CB	1:A:682:LEU:HD21	2.29	0.62
1:A:1:MSE:HE2	1:A:1:MSE:O	1.99	0.62
1:A:115:ILE:O	1:A:119:THR:HG23	2.00	0.62
1:A:205:LEU:CD1	1:A:234:VAL:HG23	2.29	0.62
1:A:793:THR:CG2	1:A:824:ILE:HG12	2.29	0.62
1:A:944:LYS:CE	1:A:1007:GLY:HA2	2.29	0.62

*Continued on next page...*

*Continued from previous page...*

Atom-1	Atom-2	Interatomic distance (Å)	Clash overlap (Å)
1:B:2:PRO:O	1:B:1022:MSE:HE1	1.98	0.62
1:B:225:GLU:OE1	1:B:225:GLU:HA	1.98	0.62
1:A:7:ARG:HH11	1:A:7:ARG:CG	2.10	0.62
1:A:90:GLN:C	1:A:94:MSE:HE3	2.20	0.62
1:A:330:GLN:O	1:A:333:ASP:HB2	2.00	0.62
1:A:445:LEU:HD12	1:A:462:LEU:HB3	1.80	0.62
1:B:613:ALA:HB1	1:B:682:LEU:CD1	2.23	0.62
1:B:795:SER:O	1:B:798:VAL:HG22	2.00	0.62
1:A:958:SER:O	1:A:961:VAL:HG23	2.00	0.62
1:B:701:GLN:O	1:B:704:ASP:HB2	2.00	0.62
1:B:940:GLY:O	1:B:944:LYS:NZ	2.31	0.62
1:A:441:LEU:H	1:A:441:LEU:CD2	2.05	0.62
1:B:667:THR:HG23	1:B:671:LEU:HD21	1.81	0.62
1:A:369:ASN:O	1:A:373:LYS:HG3	2.00	0.61
1:A:910:ARG:O	1:A:1061:LYS:HD3	2.00	0.61
1:B:960:GLU:HG2	1:B:963[B]:ARG:HH21	1.64	0.61
1:A:408:ILE:O	1:A:412:LEU:HG	2.00	0.61
1:A:290:SER:O	1:A:292:GLY:N	2.33	0.61
1:A:884:GLU:HG3	1:A:885:PHE:H	1.65	0.61
1:B:51:VAL:HG11	1:B:115:ILE:HD12	1.82	0.61
1:B:684:ARG:NH2	1:B:686:PRO:HB3	2.16	0.61
1:A:335:VAL:HG12	1:A:336:ALA:N	2.15	0.61
1:A:944:LYS:HE2	1:A:1007:GLY:HA2	1.81	0.61
1:B:176:ASP:O	1:B:179:GLN:HG3	2.00	0.61
1:B:310:GLY:O	1:B:318:ARG:HG2	2.00	0.61
1:B:444:LYS:O	1:B:448:LEU:HD13	1.99	0.61
1:B:74:MSE:O	1:B:77:ALA:HB3	2.01	0.61
1:B:93:GLN:HG2	1:B:94:MSE:H	1.65	0.61
1:B:958:SER:O	1:B:961:VAL:HG23	2.01	0.61
1:A:69:ILE:HD12	1:A:69:ILE:N	2.11	0.61
1:A:424:ASP:OD1	1:A:427:GLU:HB2	2.01	0.61
1:B:95:LEU:HD11	1:B:104:ALA:HB1	1.81	0.61
1:A:558:LEU:CD2	1:A:569:ALA:HB2	2.27	0.61
1:A:666:LYS:HE2	1:A:670:GLU:OE2	2.01	0.61
1:A:756:ILE:HG22	1:A:797:MSE:HE2	1.83	0.61
1:A:885:PHE:CZ	1:A:899:MSE:HE3	2.36	0.61
1:B:168:MSE:CE	1:B:202:LEU:HB2	2.31	0.61
1:B:744:ILE:HD12	1:B:744:ILE:N	2.14	0.61
1:B:769:ARG:NH1	1:B:976:ARG:NH2	2.49	0.61
1:A:447:ASP:CA	1:A:450:ARG:HD2	2.29	0.61
1:B:122:LEU:HD13	1:B:126:PHE:HE1	1.64	0.61

*Continued on next page...*

*Continued from previous page...*

Atom-1	Atom-2	Interatomic distance (Å)	Clash overlap (Å)
1:B:547:ARG:HD2	1:B:551:LEU:HD21	1.83	0.61
1:B:1014:GLU:HA	1:B:1017:GLU:HG2	1.83	0.61
1:A:170:LYS:O	1:A:174:MSE:HG3	2.00	0.61
1:A:227:LEU:CD1	1:A:230:ARG:HH12	2.14	0.61
1:A:374:LEU:HD12	1:A:374:LEU:O	2.01	0.60
1:A:825:LEU:O	1:A:828:VAL:HG22	2.01	0.60
1:B:59:LYS:O	1:B:62:VAL:HG23	2.01	0.60
1:A:41:THR:O	1:A:45:ALA:HB2	2.00	0.60
1:A:65:THR:CG2	1:A:70:LEU:HD22	2.13	0.60
1:A:258:TRP:CD1	1:A:488:LYS:HD2	2.36	0.60
1:A:573:ALA:O	1:A:577:GLN:HG2	2.01	0.60
1:A:719:THR:O	1:A:723:LEU:HD23	2.01	0.60
1:A:1049:ARG:HG3	1:A:1050:THR:H	1.67	0.60
1:B:218:SER:OG	1:B:220:ASN:ND2	2.35	0.60
1:B:898:MSE:HE1	1:B:1023:LEU:HG	1.84	0.60
1:B:913:SER:CB	1:B:915:LYS:HE3	2.31	0.60
1:B:300:ARG:HG3	2:B:1099:HOH:O	2.01	0.60
1:A:808:ILE:O	1:A:814:GLN:NE2	2.35	0.60
1:B:87:LYS:HG3	1:B:87:LYS:O	2.02	0.60
1:A:4:PHE:HZ	1:A:998:LEU:CD2	2.15	0.60
1:A:37:ILE:HD12	1:A:37:ILE:H	1.67	0.60
1:A:286:ASP:O	1:A:339:ARG:NH2	2.35	0.60
1:A:444:LYS:O	1:A:448:LEU:HD13	2.01	0.60
1:A:683:LEU:O	1:A:683:LEU:HD13	2.00	0.60
1:B:327:MSE:O	1:B:331:MSE:HG3	2.02	0.60
1:A:533:MSE:HE1	1:A:541:LEU:HD12	1.84	0.60
1:B:152:GLU:HB3	1:B:216:LYS:HZ2	1.65	0.60
1:B:445:LEU:O	1:B:445:LEU:HD23	2.02	0.60
1:A:87:LYS:HG3	1:A:87:LYS:O	2.01	0.59
1:A:880:GLU:HG3	1:A:915:LYS:CD	2.31	0.59
1:A:972:CYS:SG	1:A:1044:ALA:HB1	2.42	0.59
1:B:697:THR:HG22	1:B:698:MSE:CE	2.21	0.59
1:A:48:GLN:O	1:A:52:SER:HB3	2.01	0.59
1:A:69:ILE:HG22	1:A:73:ASP:OD2	2.01	0.59
1:A:512:ARG:HH11	1:A:512:ARG:CG	2.16	0.59
1:A:734:LEU:O	1:A:738:LYS:HG3	2.01	0.59
1:A:930:MSE:HG3	1:A:1031:MSE:SE	2.52	0.59
1:B:7:ARG:HH11	1:B:7:ARG:HG3	1.67	0.59
1:B:75:PRO:HB2	1:B:76:PRO:HD3	1.84	0.59
1:B:211:ILE:HG12	1:B:690:ALA:O	2.00	0.59
1:A:59:LYS:HA	1:A:62:VAL:CG2	2.32	0.59

*Continued on next page...*

*Continued from previous page...*

Atom-1	Atom-2	Interatomic distance (Å)	Clash overlap (Å)
1:A:459:ALA:O	1:A:462:LEU:N	2.34	0.59
1:A:760:ALA:CB	1:A:794:ILE:HD11	2.32	0.59
1:B:209:MSE:O	1:B:213:VAL:HG23	2.01	0.59
1:A:1:MSE:HB2	1:A:1018:GLN:NE2	2.17	0.59
1:A:666:LYS:O	1:A:669:ARG:HB2	2.02	0.59
1:B:40:LEU:HB2	1:B:43:PRO:HG3	1.82	0.59
1:B:69:ILE:HG22	1:B:73:ASP:OD2	2.03	0.59
1:B:113:ARG:HB3	1:B:1004:THR:HG23	1.83	0.59
1:B:211:ILE:HD11	1:B:690:ALA:O	2.02	0.59
1:B:1001:VAL:HG12	1:B:1002:LYS:N	2.16	0.59
1:A:681:ILE:HG22	1:A:682:LEU:N	2.16	0.59
1:A:839:GLU:HA	2:A:1161:HOH:O	2.02	0.59
1:A:83:ASN:N	1:A:83:ASN:OD1	2.35	0.59
1:A:564:GLY:O	1:A:565:GLU:HG3	2.02	0.59
1:A:738:LYS:HA	1:A:741:MSE:CE	2.31	0.59
1:B:7:ARG:HH11	1:B:7:ARG:CG	2.16	0.59
1:B:253:TRP:CD1	1:B:1025:HIS:HD2	2.21	0.59
1:A:16:VAL:HG12	1:A:17:ALA:N	2.17	0.59
1:A:185:GLN:OE1	1:A:188:ARG:HD3	2.02	0.59
1:B:28:GLU:CD	1:B:942:GLY:HA2	2.23	0.59
1:B:256:ASP:OD1	1:B:258:TRP:HZ3	1.86	0.59
1:B:317:GLU:CD	1:B:317:GLU:H	2.03	0.59
1:B:887:GLU:HA	1:B:887:GLU:OE1	2.01	0.59
1:A:42:ALA:N	1:A:43:PRO:HD2	2.18	0.59
1:A:336:ALA:HA	1:A:339:ARG:HD2	1.84	0.59
1:A:377:MSE:HE3	1:A:421:LEU:HD23	1.83	0.59
1:B:215:THR:HG21	1:B:222:GLY:HA3	1.84	0.59
1:B:897:PRO:CB	1:B:1024:VAL:HG11	2.26	0.59
1:A:79:ILE:HG12	2:A:1097:HOH:O	2.03	0.58
1:A:215:THR:HG23	1:A:220:ASN:ND2	2.17	0.58
1:A:641:GLY:HA2	1:A:709:MSE:CE	2.31	0.58
1:A:1052:ALA:O	1:A:1053:GLY:C	2.40	0.58
1:B:22:HIS:CE1	1:B:23:LEU:HD23	2.38	0.58
1:B:40:LEU:O	1:B:43:PRO:CD	2.48	0.58
1:B:720:LYS:HD3	1:B:837:PRO:HD3	1.84	0.58
1:B:917:ASN:HA	1:B:1056:LEU:HD23	1.84	0.58
1:A:216:LYS:HA	1:A:223:ILE:HG12	1.84	0.58
1:B:293:ASP:N	1:B:293:ASP:OD1	2.33	0.58
1:A:94:MSE:HG3	1:A:104:ALA:CB	2.33	0.58
1:A:129:ALA:O	1:A:133:LYS:HE3	2.03	0.58
1:A:1001:VAL:HG12	1:A:1002:LYS:N	2.18	0.58

*Continued on next page...*

*Continued from previous page...*

Atom-1	Atom-2	Interatomic distance (Å)	Clash overlap (Å)
1:B:454:GLY:C	1:B:457:PRO:HD2	2.23	0.58
1:B:667:THR:O	1:B:670:GLU:HB2	2.02	0.58
1:A:51:VAL:HG11	1:A:115:ILE:CD1	2.30	0.58
1:A:536:PRO:O	1:A:540:ASP:N	2.34	0.58
1:B:253:TRP:O	1:B:255:GLU:HG2	2.03	0.58
1:B:563:GLU:HG2	1:B:565:GLU:HB2	1.84	0.58
1:A:14:GLU:N	1:A:15:PRO:HD2	2.19	0.58
1:A:505:ASP:C	1:A:507:PRO:HD3	2.23	0.58
1:A:530:ALA:CA	1:A:533:MSE:HE3	2.33	0.58
1:B:933:MSE:HG3	1:B:950:CYS:SG	2.43	0.58
1:A:53:ASN:CB	1:B:288:SER:HB2	2.21	0.58
1:B:137:VAL:O	1:B:141:ILE:HG12	2.04	0.58
1:B:270:LEU:HD21	1:B:367:VAL:HG23	1.84	0.58
1:A:206:ILE:HG22	1:A:207:SER:N	2.17	0.58
1:A:209:MSE:O	1:A:212:PHE:HB3	2.04	0.58
1:A:644:ALA:CB	1:A:709:MSE:HE2	2.32	0.58
1:A:658:VAL:HG13	1:A:662:GLN:NE2	2.18	0.58
1:A:906:HIS:O	1:A:910:ARG:HB2	2.04	0.58
1:A:112:SER:O	1:A:115:ILE:HG23	2.03	0.58
1:A:394:TRP:CD1	1:A:404:GLY:HA3	2.39	0.58
1:A:702:TRP:CH2	1:A:706:VAL:HG21	2.38	0.58
1:A:896:GLN:HG3	1:A:897:PRO:N	2.18	0.58
1:A:898:MSE:CG	1:A:1024:VAL:HG13	2.34	0.58
1:A:926:MSE:HE2	1:A:957:ALA:CB	2.34	0.58
1:A:986:GLU:HG2	2:A:1151:HOH:O	2.02	0.58
1:A:176:ASP:O	1:A:179:GLN:HG3	2.03	0.58
1:A:726:SER:O	1:A:730:ILE:HG13	2.02	0.58
1:B:154:MSE:CE	1:B:158:VAL:HB	2.34	0.58
1:B:202:LEU:CB	1:B:203:PRO:HD3	2.34	0.58
1:B:741:MSE:SE	1:B:814:GLN:HB3	2.53	0.58
1:A:548:VAL:HG13	1:A:576:LEU:HD11	1.84	0.58
1:A:885:PHE:CE2	1:A:903:ARG:HG3	2.39	0.58
1:B:227:LEU:HD21	1:B:230:ARG:NH2	2.19	0.58
1:B:756:ILE:HG22	1:B:797:MSE:HE2	1.85	0.58
1:B:896:GLN:HG3	1:B:897:PRO:N	2.18	0.58
1:A:87:LYS:HE2	1:A:107:TYR:CA	2.33	0.57
1:A:653:ALA:HB1	1:A:657:THR:OG1	2.04	0.57
1:A:882:ASP:OD2	1:A:924:LYS:NZ	2.30	0.57
1:A:1054:PHE:N	1:A:1054:PHE:CD1	2.71	0.57
1:B:4:PHE:HZ	1:B:998:LEU:CD2	2.15	0.57
1:A:473:LEU:O	1:A:477:THR:HG23	2.03	0.57

*Continued on next page...*

*Continued from previous page...*

Atom-1	Atom-2	Interatomic distance (Å)	Clash overlap (Å)
1:B:281:LYS:CA	1:B:284:LEU:HD12	2.33	0.57
1:B:548:VAL:O	1:B:552:THR:OG1	2.23	0.57
1:B:902:ALA:HB2	1:B:930:MSE:HB3	1.86	0.57
1:A:1:MSE:HE3	1:A:3:VAL:HG23	1.85	0.57
1:A:154:MSE:HE1	1:A:158:VAL:HG23	1.86	0.57
1:A:456:SER:O	1:A:458:GLU:N	2.37	0.57
1:A:717:ILE:CG2	1:A:722:LEU:HB2	2.34	0.57
1:B:69:ILE:HD12	1:B:69:ILE:N	2.16	0.57
1:B:133:LYS:HD3	1:B:136:ARG:NH2	2.20	0.57
1:B:244:ILE:O	1:B:248:LEU:HD12	2.04	0.57
1:B:924:LYS:NZ	1:B:1061:LYS:HE3	2.17	0.57
1:A:440:ALA:O	1:A:443:SER:N	2.30	0.57
1:A:530:ALA:C	1:A:532:VAL:H	2.08	0.57
1:A:667:THR:O	1:A:670:GLU:N	2.35	0.57
1:B:216:LYS:HB2	1:B:223:ILE:HG23	1.86	0.57
1:B:523:VAL:HG13	1:B:545:CYS:HB3	1.85	0.57
1:B:886:PRO:HD3	1:B:928:LEU:HD23	1.86	0.57
1:B:1050:THR:C	1:B:1052:ALA:H	2.07	0.57
1:A:338:LEU:N	1:A:338:LEU:HD23	2.20	0.57
1:A:501:GLN:HA	1:A:501:GLN:NE2	2.20	0.57
1:A:576:LEU:O	1:A:579:SER:N	2.38	0.57
1:B:790:LEU:O	1:B:793:THR:HG22	2.04	0.57
1:A:741:MSE:HA	1:A:808:ILE:HD13	1.85	0.57
1:B:88:LEU:HD11	1:B:111:GLY:O	2.04	0.57
1:B:227:LEU:HD13	1:B:230:ARG:HH12	1.70	0.57
1:B:362:VAL:O	1:B:365:ALA:HB3	2.04	0.57
1:B:477:THR:O	1:B:481:VAL:HG23	2.03	0.57
1:B:501:GLN:HA	1:B:501:GLN:NE2	2.18	0.57
1:B:882:ASP:CG	1:B:1061:LYS:HZ1	2.07	0.57
1:B:930:MSE:HG2	1:B:954:ILE:CD1	2.35	0.57
1:B:1020:THR:O	1:B:1024:VAL:HG23	2.04	0.57
1:A:437:GLU:O	1:A:441:LEU:HG	2.04	0.57
1:B:227:LEU:HD22	1:B:230:ARG:NH1	2.20	0.57
1:B:812:GLY:CA	1:B:815:LYS:HG2	2.35	0.57
1:A:568:GLN:H	1:A:568:GLN:NE2	2.03	0.57
1:A:905:LEU:HD12	1:A:1031:MSE:SE	2.55	0.57
1:B:945:ARG:CZ	1:B:946:ALA:HB2	2.35	0.57
1:A:69:ILE:H	1:A:69:ILE:CD1	2.10	0.57
1:B:732:LYS:HG2	1:B:733:ASP:N	2.19	0.57
1:A:441:LEU:HD23	1:A:441:LEU:N	2.12	0.57
1:A:897:PRO:HB2	1:A:1024:VAL:HG11	1.87	0.57

*Continued on next page...*

*Continued from previous page...*

Atom-1	Atom-2	Interatomic distance (Å)	Clash overlap (Å)
1:B:492:HIS:HB3	1:B:655:LYS:HD3	1.85	0.57
1:A:8:THR:O	1:A:12:ILE:HG13	2.05	0.56
1:B:985:CYS:O	1:B:989:PRO:HD2	2.04	0.56
1:B:1002:LYS:HZ1	1:B:1020:THR:HG1	1.49	0.56
1:A:40:LEU:HB2	1:A:44:VAL:HG23	1.88	0.56
1:A:568:GLN:C	1:A:570:ARG:H	2.08	0.56
1:B:170:LYS:O	1:B:174:MSE:HG3	2.04	0.56
1:B:665:VAL:CG2	1:B:709:MSE:HE3	2.35	0.56
1:B:671:LEU:HD13	1:B:701:GLN:HG2	1.86	0.56
1:A:293:ASP:OD1	1:A:293:ASP:N	2.33	0.56
1:A:604:THR:HA	1:A:607:LYS:HD3	1.86	0.56
1:A:610:ALA:HA	1:A:695:PHE:HZ	1.70	0.56
1:A:685:ASN:N	1:A:686:PRO:HD3	2.20	0.56
1:A:778:LYS:HD2	1:A:1049:ARG:NH1	2.14	0.56
1:A:898:MSE:HE2	1:A:1024:VAL:HA	1.87	0.56
1:B:152:GLU:O	1:B:213:VAL:HG13	2.05	0.56
1:B:376:ALA:CB	1:B:421:LEU:HD21	2.36	0.56
1:B:608:LEU:HD12	1:B:608:LEU:N	2.21	0.56
1:A:258:TRP:CB	1:A:488:LYS:HE2	2.35	0.56
1:B:205:LEU:O	1:B:209:MSE:HG3	2.04	0.56
1:B:289:ALA:HB3	1:B:339:ARG:NH1	2.20	0.56
1:B:547:ARG:O	1:B:551:LEU:HD23	2.06	0.56
1:B:604:THR:O	1:B:607:LYS:HB2	2.06	0.56
1:B:807:ASN:HB2	1:B:810:ASP:HB3	1.87	0.56
1:B:812:GLY:H	1:B:815:LYS:HG2	1.66	0.56
1:A:20:ILE:HD12	1:A:116:LEU:CD2	2.36	0.56
1:A:347:PRO:HA	1:A:350:MSE:HE1	1.88	0.56
1:A:744:ILE:HA	1:A:808:ILE:CG2	2.35	0.56
1:A:760:ALA:HB3	1:A:794:ILE:HD11	1.86	0.56
1:B:224:GLU:OE1	1:B:228:LYS:NZ	2.38	0.56
1:B:886:PRO:HG3	1:B:928:LEU:HD23	1.88	0.56
1:B:893:VAL:O	1:B:893:VAL:HG13	2.06	0.56
1:B:398:PRO:CB	1:B:460:ARG:HH21	2.19	0.56
1:B:913:SER:HB3	1:B:915:LYS:HE3	1.87	0.56
1:A:412:LEU:HD23	1:A:412:LEU:N	2.20	0.56
1:A:533:MSE:O	1:A:538:ARG:NH1	2.39	0.56
1:A:566:SER:CB	1:A:567:PRO:HD2	2.36	0.56
1:A:744:ILE:HG22	1:A:744:ILE:O	2.04	0.56
1:B:452:GLY:C	1:B:454:GLY:H	2.08	0.56
1:B:458:GLU:HG2	1:B:459:ALA:N	2.21	0.56
1:A:281:LYS:CA	1:A:284:LEU:HD12	2.24	0.56

*Continued on next page...*



*Continued from previous page...*

Atom-1	Atom-2	Interatomic distance (Å)	Clash overlap (Å)
1:A:317:GLU:H	1:A:317:GLU:CD	2.07	0.56
1:B:85:CYS:O	1:B:89:VAL:HG23	2.05	0.56
1:B:122:LEU:O	1:B:122:LEU:HD22	2.05	0.56
1:B:675:VAL:HG22	1:B:698:MSE:HB3	1.86	0.56
1:B:1032:GLN:HA	1:B:1035:LYS:HD2	1.88	0.56
1:B:1049:ARG:O	1:B:1051:ASP:N	2.39	0.56
1:A:258:TRP:CG	1:A:488:LYS:HE2	2.40	0.56
1:A:447:ASP:O	1:A:449:ARG:N	2.38	0.56
1:B:447:ASP:O	1:B:451:GLN:HG2	2.06	0.56
1:A:337:ASP:O	1:A:340:ALA:HB3	2.06	0.56
1:A:887:GLU:HB3	1:A:903:ARG:NH2	2.20	0.56
1:A:913:SER:HB2	1:A:915:LYS:CE	2.36	0.56
1:B:836:GLN:C	1:B:838:GLN:H	2.07	0.56
1:A:212:PHE:CE1	1:A:227:LEU:HD23	2.40	0.55
1:B:13:LEU:HD11	1:B:119:THR:OG1	2.05	0.55
1:A:124:LEU:O	1:A:128:GLU:HG3	2.06	0.55
1:B:227:LEU:CD1	1:B:230:ARG:HH12	2.19	0.55
1:B:334:GLN:O	1:B:337:ASP:HB3	2.06	0.55
1:B:41:THR:O	1:B:45:ALA:HB2	2.06	0.55
1:B:216:LYS:HA	1:B:223:ILE:CG1	2.25	0.55
1:B:373:LYS:O	1:B:376:ALA:HB3	2.07	0.55
1:B:744:ILE:O	1:B:744:ILE:HG22	2.06	0.55
1:A:25:ILE:O	1:A:29:GLU:HB2	2.06	0.55
1:A:441:LEU:N	1:A:444:LYS:HD3	2.20	0.55
1:A:719:THR:HG22	1:A:723:LEU:HD23	1.88	0.55
1:B:112:SER:O	1:B:115:ILE:HG23	2.07	0.55
1:B:501:GLN:OE1	1:B:577:GLN:HG3	2.06	0.55
1:A:2:PRO:HB2	1:A:4:PHE:CE2	2.42	0.55
1:A:276:LYS:CE	1:A:301:GLN:HE21	2.17	0.55
1:A:401:GLY:O	1:A:403:GLU:N	2.40	0.55
1:A:665:VAL:O	1:A:669:ARG:HD2	2.07	0.55
1:A:1055:THR:HG22	1:A:1056:LEU:H	1.71	0.55
1:B:253:TRP:CD1	1:B:1025:HIS:CD2	2.94	0.55
1:B:253:TRP:CE2	1:B:1025:HIS:CD2	2.95	0.55
1:A:236:LYS:HA	1:A:236:LYS:HE3	1.89	0.55
1:A:377:MSE:HE3	1:A:421:LEU:CD2	2.37	0.55
1:B:22:HIS:HB2	1:B:25:ILE:CD1	2.35	0.55
1:B:266:MSE:SE	1:B:374:LEU:HD23	2.56	0.55
1:B:316:LYS:HB2	1:B:317:GLU:OE2	2.07	0.55
1:B:374:LEU:HD12	1:B:374:LEU:O	2.07	0.55
1:B:445:LEU:HD12	1:B:462:LEU:HB3	1.89	0.55

*Continued on next page...*



*Continued from previous page...*

Atom-1	Atom-2	Interatomic distance (Å)	Clash overlap (Å)
1:B:461:ALA:HB1	2:B:1084:HOH:O	2.07	0.55
1:A:570:ARG:HH22	1:A:577:GLN:HE22	1.54	0.55
1:B:290:SER:O	1:B:292:GLY:N	2.40	0.55
1:B:351:GLN:NE2	1:B:351:GLN:HA	2.21	0.55
1:B:456:SER:N	1:B:457:PRO:CD	2.70	0.55
1:B:737:CYS:SG	1:B:817:PHE:HZ	2.28	0.55
1:A:744:ILE:HD12	1:A:744:ILE:N	2.21	0.55
1:A:833:GLU:O	1:A:836:GLN:HB2	2.07	0.55
1:B:924:LYS:O	1:B:928:LEU:HD12	2.06	0.55
1:A:922:ALA:O	1:A:926:MSE:HG2	2.07	0.55
1:B:346:SER:OG	1:B:347:PRO:HD2	2.06	0.55
1:B:767:ALA:O	1:B:771:VAL:HG23	2.06	0.55
1:B:800:ASP:O	1:B:804:VAL:HG23	2.07	0.55
1:B:641:GLY:HA2	1:B:709:MSE:HE1	1.90	0.54
1:B:899:MSE:HB2	1:B:934:SER:OG	2.06	0.54
1:B:990:THR:HA	2:B:1128:HOH:O	2.06	0.54
1:A:26:MSE:HE3	1:A:40:LEU:HD13	1.89	0.54
1:A:570:ARG:HH12	1:A:577:GLN:NE2	2.06	0.54
1:A:775:GLU:HG3	1:A:975:LYS:HE3	1.88	0.54
1:B:158:VAL:O	1:B:162:LYS:HG3	2.07	0.54
1:A:227:LEU:HD11	1:A:230:ARG:HH12	1.72	0.54
1:A:789:GLU:HG2	1:A:830:LYS:HZ1	1.71	0.54
1:A:790:LEU:O	1:A:790:LEU:HD12	2.06	0.54
1:B:744:ILE:HA	1:B:808:ILE:CG2	2.34	0.54
1:A:152:GLU:HB3	1:A:216:LYS:HZ1	1.70	0.54
1:A:246:ARG:NH2	1:A:254:ASP:OD1	2.41	0.54
1:A:492:HIS:CD2	1:A:495:GLY:H	2.26	0.54
1:A:885:PHE:CE2	1:A:899:MSE:HE3	2.43	0.54
1:A:893:VAL:HG13	1:A:893:VAL:O	2.08	0.54
1:A:896:GLN:CB	1:A:897:PRO:HD3	2.38	0.54
1:A:939:GLY:HA2	1:A:1006:LEU:CG	2.37	0.54
1:A:1014:GLU:HA	1:A:1017:GLU:CG	2.38	0.54
1:B:22:HIS:CB	1:B:25:ILE:HD11	2.37	0.54
1:B:136:ARG:HD2	2:B:1126:HOH:O	2.07	0.54
1:B:237:MSE:O	1:B:241:ILE:HG13	2.08	0.54
1:B:789:GLU:HG2	1:B:830:LYS:HZ2	1.70	0.54
1:A:501:GLN:O	1:A:504:ILE:HB	2.08	0.54
1:A:507:PRO:HG2	1:A:555:LEU:HD21	1.88	0.54
1:A:717:ILE:HG21	1:A:722:LEU:HB2	1.89	0.54
1:B:13:LEU:CD2	1:B:123:LEU:HD23	2.37	0.54
1:A:511:ASP:OD1	1:A:511:ASP:N	2.31	0.54

*Continued on next page...*

*Continued from previous page...*

Atom-1	Atom-2	Interatomic distance (Å)	Clash overlap (Å)
1:A:626:PHE:CE1	1:A:680:ARG:HG2	2.43	0.54
1:A:719:THR:HG22	1:A:723:LEU:CD2	2.38	0.54
1:B:69:ILE:H	1:B:69:ILE:CD1	2.18	0.54
1:B:233:THR:CG2	1:B:237:MSE:HE3	2.37	0.54
1:B:260:SER:OG	1:B:261:LYS:N	2.40	0.54
1:A:318:ARG:HG3	1:A:318:ARG:NH1	2.21	0.54
1:A:457:PRO:CB	1:A:460:ARG:HG2	2.37	0.54
1:A:409[B]:ARG:HH21	1:A:442:THR:HB	1.71	0.54
1:A:913:SER:CA	1:A:915:LYS:HE2	2.38	0.54
1:B:457:PRO:CG	1:B:460:ARG:HG3	2.38	0.54
1:B:1018:GLN:O	1:B:1021:GLU:HB2	2.08	0.54
1:A:533:MSE:HE3	1:A:541:LEU:HD12	1.89	0.54
1:A:898:MSE:HE3	1:A:1024:VAL:CA	2.37	0.54
1:B:211:ILE:CD1	1:B:690:ALA:O	2.56	0.54
1:B:279:GLN:OE1	1:B:294:ALA:HB1	2.08	0.54
1:B:457:PRO:HG2	1:B:460:ARG:HG3	1.90	0.54
1:B:910:ARG:O	1:B:1061:LYS:HD2	2.08	0.54
1:B:276:LYS:CE	1:B:301:GLN:HE21	2.16	0.54
1:B:490:ALA:O	1:B:496:LYS:HE3	2.08	0.54
1:A:74:MSE:HG2	1:A:125:THR:CG2	2.38	0.53
1:A:237:MSE:O	1:A:241:ILE:HG13	2.08	0.53
1:A:898:MSE:HE3	1:A:1024:VAL:HA	1.89	0.53
1:B:338:LEU:HD23	1:B:338:LEU:N	2.23	0.53
1:B:430:ASP:OD1	1:B:433[B]:ARG:NH2	2.41	0.53
1:A:384:ILE:HG12	1:A:414:GLU:HB3	1.90	0.53
1:A:393:ASN:N	1:A:393:ASN:ND2	2.55	0.53
1:A:495:GLY:O	1:A:499:GLN:HG3	2.08	0.53
1:A:1054:PHE:HD1	1:A:1054:PHE:N	2.04	0.53
1:A:171:MSE:O	1:A:175:ILE:HG13	2.09	0.53
1:A:298:ALA:O	1:A:302:ILE:HD12	2.08	0.53
1:B:341[B]:ARG:CZ	1:B:343:GLN:HE21	2.20	0.53
1:B:732:LYS:NZ	1:B:733:ASP:OD1	2.40	0.53
1:A:14:GLU:HG2	1:A:993:THR:HG23	1.90	0.53
1:A:186:GLU:H	1:A:186:GLU:CD	2.12	0.53
1:A:567:PRO:HD2	1:A:568:GLN:NE2	2.23	0.53
1:A:807:ASN:ND2	1:A:810:ASP:HB2	2.23	0.53
1:B:152:GLU:HB3	1:B:216:LYS:HZ1	1.72	0.53
1:A:641:GLY:CA	1:A:709:MSE:HE1	2.32	0.53
1:A:918:ASP:HB2	1:A:964:LEU:HD13	1.90	0.53
1:A:97:SER:O	1:A:99:PRO:HD3	2.09	0.53
1:A:842:PHE:N	1:A:842:PHE:CD1	2.77	0.53

*Continued on next page...*

*Continued from previous page...*

Atom-1	Atom-2	Interatomic distance (Å)	Clash overlap (Å)
1:B:57:VAL:HA	1:B:60:GLU:HG3	1.90	0.53
1:B:218:SER:O	1:B:219:LYS:HB2	2.08	0.53
1:B:544:LYS:HD2	1:B:586:ARG:HE	1.73	0.53
1:B:547:ARG:HD2	1:B:551:LEU:CD2	2.39	0.53
1:A:26:MSE:O	1:A:29:GLU:N	2.42	0.53
1:A:28:GLU:HA	2:A:1154:HOH:O	2.08	0.53
1:A:144:TYR:CE2	1:A:160:TYR:CD1	2.97	0.53
1:A:448:LEU:CD1	1:A:448:LEU:N	2.72	0.53
1:A:453:LYS:HB2	1:A:455:ASP:OD1	2.09	0.53
1:A:772:GLU:O	1:A:975:LYS:NZ	2.35	0.53
1:A:811:PRO:C	1:A:813:LEU:H	2.12	0.53
1:B:608:LEU:HD23	1:B:629:ARG:CZ	2.38	0.53
1:A:7:ARG:CG	1:A:7:ARG:NH1	2.72	0.53
1:A:151:VAL:O	1:A:212:PHE:HE2	1.92	0.53
1:A:917:ASN:OD1	1:A:1056:LEU:HD22	2.09	0.53
1:B:256:ASP:HA	1:B:258:TRP:CE3	2.42	0.53
1:B:363:LEU:O	1:B:367:VAL:HG13	2.09	0.53
1:B:530:ALA:C	1:B:532:VAL:H	2.12	0.53
1:B:760:ALA:HB3	1:B:794:ILE:CD1	2.38	0.53
1:B:880:GLU:O	1:B:881:LYS:HD2	2.09	0.53
1:B:947:LEU:O	1:B:947:LEU:HD22	2.09	0.53
1:A:91:ALA:HB2	1:A:107:TYR:HB2	1.91	0.53
1:A:236:LYS:HE3	1:A:236:LYS:CA	2.39	0.53
1:A:334:GLN:O	1:A:337:ASP:HB3	2.08	0.52
1:B:318:ARG:HG3	1:B:318:ARG:NH1	2.23	0.52
1:B:906:HIS:CB	1:B:927:ALA:HB1	2.32	0.52
1:B:963[B]:ARG:HG3	2:B:1095:HOH:O	2.09	0.52
1:A:216:LYS:HB2	1:A:223:ILE:HG21	1.92	0.52
1:B:563:GLU:CG	1:B:565:GLU:HB2	2.39	0.52
1:B:1048:ILE:HD12	1:B:1048:ILE:O	2.09	0.52
1:A:419:ALA:O	1:A:422:CYS:HB2	2.09	0.52
1:A:603:THR:O	1:A:606:ILE:HG22	2.08	0.52
1:A:655:LYS:HG2	1:A:659:GLU:OE2	2.09	0.52
1:A:688:ASN:O	1:A:691:ALA:N	2.27	0.52
1:A:898:MSE:HG3	1:A:1024:VAL:HG13	1.90	0.52
1:B:144:TYR:CE2	1:B:160:TYR:CD1	2.97	0.52
1:B:402:PRO:HD2	1:B:403:GLU:OE2	2.09	0.52
1:B:454:GLY:C	1:B:460:ARG:HE	2.11	0.52
1:B:654:ASN:HB2	1:B:657:THR:HG21	1.90	0.52
1:B:919:ILE:HD11	1:B:964:LEU:HB2	1.92	0.52
1:A:698:MSE:HE2	1:A:698:MSE:HA	1.90	0.52

*Continued on next page...*

*Continued from previous page...*

Atom-1	Atom-2	Interatomic distance (Å)	Clash overlap (Å)
1:B:68:GLN:O	1:B:72:ARG:HG2	2.10	0.52
1:B:74:MSE:HG2	1:B:125:THR:CG2	2.38	0.52
1:A:224:GLU:O	1:A:228:LYS:HD3	2.09	0.52
1:A:253:TRP:CD2	1:A:1025:HIS:CD2	2.98	0.52
1:A:604:THR:O	1:A:607:LYS:HB2	2.09	0.52
1:A:987:ARG:O	1:A:991:ILE:HG13	2.10	0.52
1:B:551:LEU:CD1	1:B:575:GLN:HB3	2.40	0.52
1:A:883:GLU:HA	1:A:883:GLU:OE1	2.09	0.52
1:B:551:LEU:CD2	1:B:551:LEU:N	2.73	0.52
1:B:734:LEU:HD13	1:B:822:TYR:CE1	2.44	0.52
1:A:144:TYR:CE2	1:A:160:TYR:CE1	2.98	0.52
1:A:220:ASN:OD1	1:A:685:ASN:OD1	2.27	0.52
1:A:424:ASP:OD1	1:A:424:ASP:O	2.27	0.52
1:B:218:SER:HB3	1:B:220:ASN:CG	2.29	0.52
1:B:283:TRP:CH2	1:B:336:ALA:HB2	2.41	0.52
1:B:457:PRO:HG2	1:B:460:ARG:HG2	1.91	0.52
1:B:530:ALA:CA	1:B:533:MSE:HE3	2.34	0.52
1:B:555:LEU:O	1:B:555:LEU:HD23	2.10	0.52
1:A:75:PRO:HB2	1:A:76:PRO:CD	2.36	0.52
1:A:87:LYS:NZ	1:A:107:TYR:HA	2.24	0.52
1:B:15:PRO:O	1:B:18:GLN:N	2.39	0.52
1:B:113:ARG:CZ	1:B:1005:MSE:HB3	2.40	0.52
1:B:535:GLY:O	1:B:539:GLN:OE1	2.28	0.52
1:A:142:LEU:HD23	1:A:238:SER:HB3	1.91	0.52
1:A:692:TYR:O	1:A:696:GLU:HB2	2.09	0.52
1:B:93:GLN:HG2	1:B:94:MSE:HG3	1.91	0.52
1:B:144:TYR:CE2	1:B:160:TYR:CE1	2.98	0.52
1:B:653:ALA:O	1:B:654:ASN:C	2.48	0.52
1:A:42:ALA:H	1:A:43:PRO:HD2	1.75	0.52
1:A:218:SER:O	1:A:219:LYS:HB2	2.11	0.52
1:A:341:ARG:CB	1:A:343:GLN:HE21	2.23	0.52
1:A:458:GLU:CG	1:A:459:ALA:N	2.73	0.52
1:B:538[A]:ARG:HH11	1:B:539:GLN:HE22	1.57	0.52
1:A:574:SER:HA	1:A:577:GLN:HG2	1.92	0.51
1:A:800:ASP:O	1:A:804:VAL:HG23	2.10	0.51
1:B:205:LEU:HD13	1:B:234:VAL:HG23	1.90	0.51
1:B:808:ILE:O	1:B:814:GLN:NE2	2.43	0.51
1:B:926:MSE:HE2	1:B:957:ALA:C	2.31	0.51
1:B:933:MSE:HE2	1:B:947:LEU:HD21	1.92	0.51
1:A:220:ASN:H	1:A:220:ASN:ND2	2.00	0.51
1:A:1020:THR:O	1:A:1024:VAL:HG23	2.10	0.51

*Continued on next page...*

*Continued from previous page...*

Atom-1	Atom-2	Interatomic distance (Å)	Clash overlap (Å)
1:B:14:GLU:HA	1:B:997:ILE:CD1	2.34	0.51
1:B:93:GLN:CG	1:B:94:MSE:N	2.72	0.51
1:B:154:MSE:O	1:B:157:LEU:N	2.43	0.51
1:B:754:THR:HG22	1:B:758:ARG:HH21	1.76	0.51
1:B:780:ARG:O	1:B:784:LYS:HB2	2.09	0.51
1:A:30:GLY:O	1:A:105:ARG:NH2	2.43	0.51
1:A:59:LYS:O	1:A:62:VAL:HG23	2.10	0.51
1:A:535:GLY:O	1:A:539:GLN:OE1	2.28	0.51
1:A:793:THR:CG2	1:A:824:ILE:HA	2.40	0.51
1:B:142:LEU:CD2	1:B:238:SER:HB3	2.39	0.51
1:B:236:LYS:HE3	1:B:236:LYS:HA	1.90	0.51
1:B:328:LEU:HD22	1:B:356:VAL:HG13	1.92	0.51
1:B:910:ARG:HA	1:B:924:LYS:HE2	1.91	0.51
1:B:1014:GLU:HA	1:B:1017:GLU:CD	2.29	0.51
1:A:896:GLN:HB3	1:A:897:PRO:HD3	1.93	0.51
1:B:634:GLU:HG3	1:B:676:VAL:HG21	1.92	0.51
1:A:123:LEU:HA	1:A:126:PHE:HD1	1.75	0.51
1:A:548:VAL:O	1:A:552:THR:OG1	2.29	0.51
1:A:1014:GLU:HA	1:A:1017:GLU:HG2	1.91	0.51
1:B:22:HIS:HA	1:B:25:ILE:HD11	1.91	0.51
1:B:22:HIS:CA	1:B:25:ILE:HG13	2.30	0.51
1:B:290:SER:O	1:B:293:ASP:OD1	2.28	0.51
1:B:563:GLU:HG3	1:B:565:GLU:N	2.24	0.51
1:B:886:PRO:CD	1:B:928:LEU:HD23	2.41	0.51
1:A:165:GLY:N	1:A:166:PRO:HD2	2.26	0.51
1:A:363:LEU:O	1:A:367:VAL:HG13	2.11	0.51
1:A:731:LYS:NZ	1:A:731:LYS:HB3	2.25	0.51
1:A:985:CYS:O	1:A:989:PRO:HD2	2.10	0.51
1:A:895:ASN:OD1	1:A:895:ASN:O	2.28	0.51
1:A:445:LEU:HD21	1:A:449:ARG:NE	2.25	0.51
1:A:947:LEU:HD22	1:A:947:LEU:C	2.30	0.51
1:B:684:ARG:HH22	1:B:686:PRO:HB3	1.76	0.51
1:B:885:PHE:CZ	1:B:899:MSE:HE3	2.46	0.51
1:A:460:ARG:O	1:A:464:LYS:HB2	2.11	0.51
1:B:297:GLN:HA	1:B:297:GLN:HE21	1.71	0.51
1:B:423:ASP:O	1:B:425:PRO:HD3	2.11	0.51
1:B:454:GLY:HA3	1:B:460:ARG:HE	1.75	0.51
1:A:790:LEU:O	1:A:793:THR:HG22	2.11	0.51
1:A:955:ALA:HA	1:A:958:SER:HB2	1.93	0.51
1:A:998:LEU:HB3	1:A:1023:LEU:HD12	1.93	0.51
1:B:157:LEU:HD23	1:B:157:LEU:C	2.31	0.51

*Continued on next page...*

*Continued from previous page...*

Atom-1	Atom-2	Interatomic distance (Å)	Clash overlap (Å)
1:B:885:PHE:CE2	1:B:899:MSE:HE3	2.46	0.51
1:B:1004:THR:HG22	1:B:1005:MSE:HG3	1.93	0.51
1:A:75:PRO:O	1:A:79:ILE:HD13	2.11	0.50
1:A:506:ASN:HB3	1:A:509:VAL:HG13	1.91	0.50
1:A:667:THR:CG2	1:A:671:LEU:HD21	2.41	0.50
1:B:179:GLN:O	1:B:188:ARG:NE	2.45	0.50
1:B:232:PHE:CE1	1:B:674:GLN:NE2	2.79	0.50
1:B:898:MSE:HE3	1:B:1024:VAL:N	2.26	0.50
1:A:74:MSE:HB2	1:A:75:PRO:HD3	1.94	0.50
1:A:794:ILE:O	1:A:798:VAL:HG13	2.11	0.50
1:A:929:LEU:CD1	1:A:953:ASP:HB3	2.41	0.50
1:A:1050:THR:HG23	1:A:1050:THR:O	2.12	0.50
1:B:445:LEU:HD23	1:B:445:LEU:C	2.31	0.50
1:A:301:GLN:O	1:A:305:GLU:HG2	2.10	0.50
1:A:754:THR:HG22	1:A:758:ARG:HH21	1.76	0.50
1:A:915:LYS:CD	1:A:915:LYS:H	2.22	0.50
1:B:747:GLN:HG3	1:B:748:MSE:N	2.25	0.50
1:A:258:TRP:CE3	1:A:261:LYS:HE2	2.47	0.50
1:A:316:LYS:HB2	1:A:317:GLU:OE2	2.09	0.50
1:A:569:ALA:HB1	2:A:1138:HOH:O	2.12	0.50
1:B:606:ILE:CD1	1:B:699:LYS:HG3	2.41	0.50
1:B:665:VAL:O	1:B:669:ARG:HD2	2.10	0.50
1:B:881:LYS:HG2	2:B:1136:HOH:O	2.12	0.50
1:A:79:ILE:O	1:A:83:ASN:OD1	2.29	0.50
1:A:157:LEU:HD23	1:A:158:VAL:N	2.25	0.50
1:A:270:LEU:N	1:A:270:LEU:HD23	2.26	0.50
1:A:935:ARG:HB2	1:A:936:LEU:HD23	1.94	0.50
1:B:207:SER:CB	1:B:694:HIS:ND1	2.75	0.50
1:B:756:ILE:HG21	1:B:797:MSE:HE2	1.92	0.50
1:B:61:THR:O	1:B:65:THR:HB	2.10	0.50
1:B:333:ASP:O	1:B:337:ASP:HB2	2.11	0.50
1:B:460:ARG:NH1	1:B:460:ARG:HB3	2.27	0.50
1:B:785:ALA:O	1:B:788:ASP:HB2	2.11	0.50
1:B:896:GLN:CB	1:B:897:PRO:HD3	2.42	0.50
1:B:913:SER:HB2	1:B:915:LYS:HE3	1.93	0.50
1:A:568:GLN:O	1:A:572:LEU:HB2	2.11	0.50
1:A:785:ALA:O	1:A:788:ASP:HB2	2.12	0.50
1:B:287:PRO:HG3	1:B:350:MSE:HG2	1.94	0.50
1:B:895:ASN:OD1	1:B:895:ASN:O	2.29	0.50
1:A:108:LEU:O	1:A:112:SER:OG	2.29	0.50
1:A:618:ASP:OD1	1:A:618:ASP:O	2.29	0.50

*Continued on next page...*

*Continued from previous page...*

Atom-1	Atom-2	Interatomic distance (Å)	Clash overlap (Å)
1:B:215:THR:HG21	1:B:223:ILE:N	2.26	0.50
1:B:454:GLY:CA	1:B:460:ARG:HE	2.25	0.50
1:B:608:LEU:H	1:B:608:LEU:CD1	2.25	0.50
1:B:839:GLU:N	1:B:840:PRO:CD	2.75	0.50
1:A:939:GLY:HA2	1:A:1006:LEU:HG	1.92	0.49
1:B:403:GLU:O	1:B:406:GLU:N	2.44	0.49
1:A:113:ARG:NH1	1:A:1005:MSE:HE2	2.27	0.49
1:A:234:VAL:O	1:A:238:SER:OG	2.29	0.49
1:A:952:LYS:NZ	1:B:623[B]:GLU:OE2	2.44	0.49
1:A:1004:THR:HG22	1:A:1005:MSE:HG3	1.93	0.49
1:A:1013:ASP:N	1:A:1013:ASP:OD1	2.44	0.49
1:B:342:GLY:C	1:B:344:GLY:H	2.15	0.49
1:B:558:LEU:HD22	1:B:569:ALA:CB	2.37	0.49
1:A:136:ARG:HG3	1:A:136:ARG:NH1	2.26	0.49
1:A:682:LEU:HD12	1:A:682:LEU:O	2.11	0.49
1:A:737:CYS:HG	1:A:817:PHE:HZ	1.60	0.49
1:A:157:LEU:HD23	1:A:157:LEU:C	2.32	0.49
1:A:313:CYS:O	1:A:486:PRO:HG3	2.12	0.49
1:B:10:GLU:HG2	1:B:11:SER:N	2.26	0.49
1:A:68:GLN:O	1:A:72:ARG:HG2	2.11	0.49
1:A:122:LEU:O	1:A:122:LEU:HD22	2.12	0.49
1:A:626:PHE:CZ	1:A:680:ARG:CG	2.95	0.49
1:B:229:ASN:OD1	1:B:229:ASN:N	2.45	0.49
1:B:885:PHE:CE2	1:B:903:ARG:HG3	2.46	0.49
1:B:894:ILE:CG2	1:B:895:ASN:N	2.75	0.49
1:B:932:GLU:O	1:B:936:LEU:HG	2.13	0.49
1:A:85:CYS:O	1:A:89:VAL:HG23	2.12	0.49
1:A:90:GLN:O	1:A:94:MSE:HE3	2.12	0.49
1:A:426:LYS:HG2	1:A:427:GLU:N	2.27	0.49
1:A:745:GLN:HG3	1:A:748:MSE:HB2	1.95	0.49
1:A:747:GLN:HG3	1:A:748:MSE:N	2.27	0.49
1:A:898:MSE:HE3	1:A:1024:VAL:CG2	2.43	0.49
1:A:901:ALA:HB1	1:A:1031:MSE:HG3	1.93	0.49
1:A:1018:GLN:HG2	1:A:1019:ALA:N	2.24	0.49
1:B:79:ILE:O	1:B:83:ASN:OD1	2.29	0.49
1:A:453:LYS:H	1:A:453:LYS:CD	2.09	0.49
1:A:479:ARG:HB3	2:A:1164:HOH:O	2.11	0.49
1:B:31:GLU:HG3	1:B:105:ARG:NH1	2.27	0.49
1:B:580:LEU:O	1:B:583:LEU:N	2.46	0.49
1:B:790:LEU:O	1:B:790:LEU:HD12	2.13	0.49
1:B:836:GLN:C	1:B:838:GLN:N	2.66	0.49

*Continued on next page...*



*Continued from previous page...*

Atom-1	Atom-2	Interatomic distance (Å)	Clash overlap (Å)
1:A:109:ILE:HD13	1:A:1008[B]:ARG:HE	1.78	0.49
1:A:631:ALA:O	1:A:633:PHE:N	2.45	0.49
1:B:14:GLU:HB3	1:B:15:PRO:HD3	1.94	0.49
1:B:212:PHE:C	1:B:214:THR:H	2.16	0.49
1:A:136:ARG:HG3	1:A:136:ARG:HH11	1.78	0.49
1:A:333:ASP:O	1:A:337:ASP:HB2	2.13	0.49
1:A:498:GLU:CG	1:A:499:GLN:N	2.75	0.49
1:A:912:TRP:O	1:A:1061:LYS:HD2	2.13	0.49
1:B:654:ASN:O	1:B:657:THR:N	2.36	0.49
1:A:168:MSE:CE	1:A:202:LEU:HB2	2.43	0.49
1:A:216:LYS:HB2	1:A:223:ILE:CG2	2.43	0.49
1:A:769:ARG:HH11	1:A:976:ARG:NH2	2.08	0.49
1:A:944:LYS:HE2	1:A:1006:LEU:O	2.13	0.49
1:B:258:TRP:C	1:B:258:TRP:HE3	2.15	0.49
1:B:376:ALA:HB1	1:B:421:LEU:HD21	1.95	0.49
1:B:799:MSE:HE2	1:B:799:MSE:HB2	1.77	0.49
1:B:815:LYS:CD	1:B:815:LYS:N	2.76	0.49
1:A:911:LYS:O	1:A:1060:ARG:HG2	2.13	0.48
1:B:43:PRO:O	1:B:46:ALA:HB3	2.13	0.48
1:B:811:PRO:C	1:B:813:LEU:H	2.15	0.48
1:B:894:ILE:HD13	1:B:934:SER:O	2.13	0.48
1:B:898:MSE:CE	1:B:1024:VAL:HA	2.43	0.48
1:A:310:GLY:O	1:A:318:ARG:HG2	2.13	0.48
1:A:555:LEU:HD23	1:A:555:LEU:C	2.34	0.48
1:A:634:GLU:HG3	1:A:676:VAL:HG21	1.96	0.48
1:A:665:VAL:HG22	1:A:709:MSE:HE3	1.95	0.48
1:B:641:GLY:O	1:B:645:GLU:HG3	2.13	0.48
1:B:841:ASP:OD1	1:B:841:ASP:N	2.40	0.48
1:B:1014:GLU:CA	1:B:1017:GLU:HG2	2.43	0.48
1:B:1055:THR:HG22	1:B:1056:LEU:H	1.78	0.48
1:A:457:PRO:CA	1:A:460:ARG:HG2	2.44	0.48
1:A:477:THR:O	1:A:481:VAL:HG23	2.12	0.48
1:B:2:PRO:HB2	1:B:1022:MSE:SE	2.63	0.48
1:B:22:HIS:HB2	1:B:25:ILE:HD12	1.94	0.48
1:B:530:ALA:O	1:B:532:VAL:N	2.45	0.48
1:B:744:ILE:N	1:B:744:ILE:CD1	2.75	0.48
1:A:448:LEU:H	1:A:448:LEU:HD13	1.77	0.48
1:A:530:ALA:O	1:A:532:VAL:N	2.45	0.48
1:A:898:MSE:CE	1:A:1023:LEU:HD23	2.23	0.48
1:B:14:GLU:HG2	1:B:993:THR:CG2	2.43	0.48
1:B:566:SER:CB	1:B:567:PRO:HD2	2.41	0.48

*Continued on next page...*

*Continued from previous page...*

Atom-1	Atom-2	Interatomic distance (Å)	Clash overlap (Å)
1:A:126:PHE:O	1:A:129:ALA:HB3	2.13	0.48
1:A:769:ARG:NH1	1:A:976:ARG:HH22	2.12	0.48
1:A:833:GLU:C	1:A:835:PHE:H	2.17	0.48
1:B:29:GLU:HG2	1:B:945:ARG:CD	2.38	0.48
1:B:434:SER:O	1:B:438:ILE:HG13	2.14	0.48
1:B:437:GLU:O	1:B:441:LEU:HG	2.14	0.48
1:B:903:ARG:O	1:B:907:ASP:OD2	2.31	0.48
1:A:74:MSE:CE	1:A:78:PHE:CZ	2.91	0.48
1:A:544:LYS:HD2	1:A:586:ARG:HE	1.76	0.48
1:B:253:TRP:CD2	1:B:1025:HIS:CD2	3.02	0.48
1:B:341[B]:ARG:CZ	1:B:343:GLN:NE2	2.77	0.48
1:B:384:ILE:HG12	1:B:414:GLU:HB3	1.95	0.48
1:B:422:CYS:O	1:B:428:ARG:NH2	2.45	0.48
1:B:673:PRO:C	1:B:675:VAL:H	2.17	0.48
1:A:622:ARG:NH1	1:A:683:LEU:HD13	2.28	0.48
1:A:741:MSE:SE	1:A:814:GLN:HB3	2.64	0.48
1:A:906:HIS:HB2	1:A:927:ALA:CB	2.40	0.48
1:A:913:SER:C	1:A:915:LYS:HE2	2.33	0.48
1:B:42:ALA:N	1:B:43:PRO:HD2	2.29	0.48
1:B:159:THR:HA	1:B:162:LYS:NZ	2.29	0.48
1:B:807:ASN:CB	1:B:810:ASP:HB3	2.42	0.48
1:A:173:LYS:O	1:A:177:GLU:HG3	2.14	0.48
1:A:644:ALA:CB	1:A:709:MSE:CE	2.91	0.48
1:A:898:MSE:HG2	1:A:1024:VAL:HG13	1.96	0.48
1:A:921:ALA:O	1:A:925:ARG:HG3	2.14	0.48
1:B:104:ALA:C	1:B:106:ASP:H	2.17	0.48
1:B:502:ARG:O	1:B:505:ASP:HB2	2.14	0.48
1:A:123:LEU:HA	1:A:126:PHE:CD1	2.49	0.48
1:A:697:THR:HG22	1:A:698:MSE:HE2	1.95	0.48
1:A:838:GLN:NE2	1:A:838:GLN:HA	2.27	0.48
1:B:262:ASP:OD2	1:B:485:ARG:HD2	2.12	0.48
1:B:377:MSE:HB3	1:B:481:VAL:HG13	1.95	0.48
1:B:466:VAL:HG12	1:B:467:ALA:N	2.29	0.48
1:B:754:THR:HG22	1:B:758:ARG:NH2	2.29	0.48
1:B:880:GLU:CG	1:B:881:LYS:N	2.77	0.48
1:A:146:THR:HG22	1:A:147:VAL:N	2.27	0.48
1:A:460:ARG:NH2	2:A:1097:HOH:O	2.43	0.48
1:A:836:GLN:OE1	1:A:836:GLN:HA	2.13	0.48
1:A:919:ILE:CD1	1:A:964:LEU:HB2	2.44	0.48
1:B:321:ILE:HG12	1:B:366:LYS:HD2	1.96	0.48
1:B:667:THR:HG22	1:B:671:LEU:HD21	1.95	0.48

*Continued on next page...*

*Continued from previous page...*

Atom-1	Atom-2	Interatomic distance (Å)	Clash overlap (Å)
1:B:685:ASN:C	1:B:687:GLY:H	2.16	0.48
1:B:833:GLU:O	1:B:836:GLN:HB2	2.14	0.48
1:B:902:ALA:HB1	1:B:927:ALA:O	2.13	0.48
1:B:947:LEU:HD22	1:B:947:LEU:C	2.33	0.48
1:A:60:GLU:O	1:A:64:THR:OG1	2.31	0.47
1:A:744:ILE:HG13	1:A:808:ILE:CG2	2.44	0.47
1:A:769:ARG:NH1	1:A:976:ARG:HH21	2.11	0.47
1:B:331:MSE:HE1	1:B:355:GLN:HG2	1.95	0.47
1:B:551:LEU:HD23	1:B:551:LEU:H	1.77	0.47
1:A:253:TRP:CZ3	1:A:1022:MSE:HG2	2.49	0.47
1:A:321:ILE:HG12	1:A:366:LYS:HD2	1.96	0.47
1:A:682:LEU:HB2	1:A:691:ALA:HB1	1.95	0.47
1:A:1008[A]:ARG:CZ	1:A:1008[A]:ARG:HB2	2.44	0.47
1:B:294:ALA:O	1:B:297:GLN:HB2	2.15	0.47
1:B:598:VAL:HG12	1:B:640:LEU:HD23	1.95	0.47
1:A:94:MSE:H	1:A:94:MSE:HG2	1.46	0.47
1:A:512:ARG:CG	1:A:512:ARG:NH1	2.77	0.47
1:A:658:VAL:CG1	1:A:662:GLN:NE2	2.77	0.47
1:A:685:ASN:N	1:A:686:PRO:CD	2.77	0.47
1:B:750:VAL:CG1	1:B:751:ALA:N	2.77	0.47
1:B:972:CYS:O	1:B:978:ARG:NH2	2.47	0.47
1:A:142:LEU:O	1:A:145:LEU:HB2	2.14	0.47
1:B:454:GLY:HA2	1:B:457:PRO:CG	2.44	0.47
1:A:1:MSE:HE3	1:A:3:VAL:CG2	2.44	0.47
1:A:566:SER:CB	1:A:567:PRO:CD	2.93	0.47
1:B:48:GLN:O	1:B:52:SER:HB3	2.13	0.47
1:B:74:MSE:HE1	1:B:122:LEU:HD21	1.94	0.47
1:B:564:GLY:CA	1:B:569:ALA:HB1	2.45	0.47
1:A:153:THR:CG2	1:A:154:MSE:H	2.18	0.47
1:A:223:ILE:HA	1:A:226:ALA:HB3	1.95	0.47
1:A:429:ASP:OD2	1:A:433:ARG:NH2	2.47	0.47
1:A:675:VAL:CG2	1:A:698:MSE:HB3	2.36	0.47
1:A:1014:GLU:CA	1:A:1017:GLU:HG2	2.45	0.47
1:B:456:SER:N	1:B:457:PRO:HD2	2.30	0.47
1:B:603:THR:O	1:B:606:ILE:HG22	2.14	0.47
1:A:122:LEU:HD13	1:A:126:PHE:HE1	1.80	0.47
1:A:324:THR:HG21	1:A:363:LEU:HG	1.96	0.47
1:A:337:ASP:O	1:A:340:ALA:N	2.35	0.47
1:A:626:PHE:CE1	1:A:680:ARG:CG	2.97	0.47
1:A:744:ILE:HG13	1:A:808:ILE:HG22	1.97	0.47
1:A:913:SER:CB	1:A:915:LYS:HG2	2.25	0.47

*Continued on next page...*

*Continued from previous page...*

Atom-1	Atom-2	Interatomic distance (Å)	Clash overlap (Å)
1:A:936:LEU:HD12	1:A:947:LEU:HA	1.96	0.47
1:B:13:LEU:CD2	1:B:123:LEU:CD2	2.93	0.47
1:B:31:GLU:HA	1:B:105:ARG:HH21	1.73	0.47
1:B:211:ILE:CD1	1:B:681:ILE:HG21	2.45	0.47
1:B:253:TRP:CG	1:B:1025:HIS:CD2	3.03	0.47
1:B:377:MSE:HE3	1:B:421:LEU:HD23	1.96	0.47
1:B:682:LEU:HD22	1:B:685:ASN:HB3	1.96	0.47
1:B:929:LEU:O	1:B:950:CYS:SG	2.73	0.47
1:A:82:GLU:O	1:A:86:THR:HG23	2.15	0.47
1:A:131:VAL:O	1:A:135:ILE:HG13	2.15	0.47
1:A:215:THR:HG23	1:A:220:ASN:HD21	1.78	0.47
1:B:122:LEU:HD22	1:B:122:LEU:C	2.35	0.47
1:B:448:LEU:HA	1:B:451:GLN:HG3	1.94	0.47
1:A:227:LEU:CD1	1:A:230:ARG:NH1	2.78	0.47
1:A:227:LEU:HD22	1:A:227:LEU:HA	1.61	0.47
1:A:394:TRP:CG	1:A:404:GLY:HA3	2.50	0.47
1:A:447:ASP:O	1:A:450:ARG:HG3	2.15	0.47
1:A:563:GLU:H	1:A:563:GLU:HG2	1.45	0.47
1:A:619:ALA:HA	1:A:620:PRO:HD3	1.81	0.47
1:A:885:PHE:CZ	1:A:899:MSE:CE	2.98	0.47
1:B:563:GLU:HG2	1:B:565:GLU:H	1.76	0.47
1:B:595:VAL:HG11	1:B:717:ILE:HD11	1.97	0.47
1:B:611:VAL:HG12	1:B:612:ALA:N	2.29	0.47
1:B:790:LEU:HD12	1:B:793:THR:CG2	2.45	0.47
1:A:202:LEU:CB	1:A:203:PRO:HD3	2.44	0.47
1:A:243:GLU:OE1	1:A:243:GLU:HA	2.15	0.47
1:A:622:ARG:CZ	1:A:683:LEU:HD13	2.44	0.47
1:A:1014:GLU:HA	1:A:1017:GLU:CD	2.36	0.47
1:B:10:GLU:O	1:B:14:GLU:HB2	2.15	0.47
1:B:93:GLN:HG2	1:B:94:MSE:N	2.29	0.47
1:B:227:LEU:O	1:B:231:ASN:HB2	2.15	0.47
1:B:402:PRO:O	1:B:406:GLU:HB2	2.15	0.47
1:B:544:LYS:HD3	1:B:582:ASP:OD2	2.14	0.47
1:A:216:LYS:HD3	1:A:216:LYS:C	2.35	0.46
1:A:815:LYS:CD	1:A:815:LYS:N	2.78	0.46
1:A:894:ILE:CG2	1:A:895:ASN:N	2.77	0.46
1:B:24:VAL:O	1:B:27:HIS:HB2	2.15	0.46
1:B:216:LYS:C	1:B:216:LYS:HD3	2.36	0.46
1:B:247:VAL:CA	1:B:250:LEU:HD13	2.39	0.46
1:B:929:LEU:HD11	1:B:953:ASP:HB3	1.97	0.46
1:A:270:LEU:HD22	1:A:270:LEU:HA	1.71	0.46

*Continued on next page...*

*Continued from previous page...*

Atom-1	Atom-2	Interatomic distance (Å)	Clash overlap (Å)
1:A:369:ASN:OD1	1:A:372:ARG:NH2	2.48	0.46
1:A:440:ALA:O	1:A:442:THR:N	2.48	0.46
1:A:460:ARG:C	1:A:462:LEU:H	2.19	0.46
1:B:74:MSE:CE	1:B:78:PHE:CZ	2.97	0.46
1:B:277:LEU:HD23	1:B:277:LEU:HA	1.68	0.46
1:B:460:ARG:HH11	1:B:460:ARG:HA	1.80	0.46
1:A:74:MSE:CB	1:A:75:PRO:HD3	2.46	0.46
1:A:427:GLU:OE1	1:A:480:ALA:HA	2.15	0.46
1:A:688:ASN:C	1:A:690:ALA:H	2.17	0.46
1:A:749:LEU:C	1:A:749:LEU:HD13	2.36	0.46
1:B:6:THR:HG22	1:B:182:LEU:HD12	1.96	0.46
1:B:143:GLU:HG2	1:B:144:TYR:N	2.29	0.46
1:B:223:ILE:HG13	1:B:223:ILE:H	1.50	0.46
1:A:10:GLU:HG2	1:A:11:SER:N	2.29	0.46
1:A:47:VAL:HG12	1:A:115:ILE:CD1	2.44	0.46
1:A:110:ASP:OD1	1:A:1008[B]:ARG:NH1	2.49	0.46
1:A:743:ASN:HB2	1:A:745:GLN:NE2	2.31	0.46
1:B:84:ALA:O	1:B:88:LEU:HD12	2.15	0.46
1:B:223:ILE:C	1:B:225:GLU:H	2.17	0.46
1:B:885:PHE:CE2	1:B:899:MSE:CE	2.99	0.46
1:B:919:ILE:CD1	1:B:964:LEU:HB2	2.46	0.46
1:A:5:HIS:CD2	1:A:6:THR:HG23	2.50	0.46
1:A:28:GLU:OE1	1:A:944:LYS:HD2	2.15	0.46
1:B:45:ALA:O	1:B:48:GLN:HB3	2.16	0.46
1:B:397:ASP:C	1:B:399:ASN:H	2.19	0.46
1:B:619:ALA:HA	1:B:620:PRO:HD3	1.79	0.46
1:A:793:THR:HG23	1:A:824:ILE:HG13	1.97	0.46
1:A:930:MSE:HG2	1:A:954:ILE:CD1	2.46	0.46
1:B:190:MSE:HE2	1:B:247:VAL:HG21	1.97	0.46
1:B:343:GLN:CD	1:B:343:GLN:H	2.14	0.46
1:B:568:GLN:C	1:B:570:ARG:H	2.19	0.46
1:B:754:THR:CG2	1:B:758:ARG:HH21	2.29	0.46
1:A:20:ILE:CD1	1:A:115:ILE:HG23	2.45	0.46
1:A:346:SER:O	1:A:350:MSE:HE2	2.16	0.46
1:A:744:ILE:N	1:A:744:ILE:CD1	2.78	0.46
1:A:769:ARG:HH11	1:A:976:ARG:HH21	1.64	0.46
1:A:915:LYS:CD	1:A:915:LYS:N	2.78	0.46
1:B:943:THR:C	1:B:945:ARG:H	2.18	0.46
1:A:59:LYS:HA	1:A:62:VAL:HG23	1.97	0.46
1:A:150:VAL:O	1:A:150:VAL:HG13	2.14	0.46
1:A:324:THR:CG2	1:A:363:LEU:HG	2.45	0.46

*Continued on next page...*

*Continued from previous page...*

Atom-1	Atom-2	Interatomic distance (Å)	Clash overlap (Å)
1:A:731:LYS:NZ	1:A:731:LYS:CB	2.78	0.46
1:A:824:ILE:HG22	1:A:825:LEU:N	2.30	0.46
1:B:22:HIS:CE1	1:B:23:LEU:CD2	2.99	0.46
1:B:40:LEU:CD2	1:B:43:PRO:HG2	2.45	0.46
1:B:102:VAL:N	1:B:103:PRO:CD	2.79	0.46
1:B:225:GLU:HB3	1:B:681:ILE:CG1	2.41	0.46
1:B:369:ASN:OD1	1:B:372:ARG:NH2	2.49	0.46
1:B:452:GLY:O	1:B:454:GLY:N	2.49	0.46
1:B:512:ARG:CG	1:B:512:ARG:NH1	2.71	0.46
1:A:448:LEU:N	1:A:448:LEU:HD12	2.30	0.46
1:A:741:MSE:O	1:A:744:ILE:HD12	2.16	0.46
1:B:623[B]:GLU:OE2	1:B:624:GLU:HG3	2.16	0.46
1:B:648:ALA:O	1:B:658:VAL:HG22	2.15	0.46
1:A:401:GLY:HA3	1:A:403:GLU:OE1	2.15	0.46
1:A:601:ASP:OD2	1:A:604:THR:OG1	2.22	0.46
1:A:988:ILE:HB	1:A:989:PRO:HD3	1.98	0.46
1:B:54:LEU:HD13	1:B:122:LEU:HD12	1.96	0.46
1:B:458:GLU:O	1:B:459:ALA:HB3	2.15	0.46
1:B:604:THR:HA	1:B:607:LYS:HD3	1.98	0.46
1:B:811:PRO:HB3	1:B:815:LYS:CE	2.43	0.46
1:B:933:MSE:HE2	1:B:947:LEU:CD2	2.45	0.46
1:A:377:MSE:CE	1:A:418:ILE:HA	2.46	0.45
1:A:760:ALA:HB3	1:A:794:ILE:CD1	2.46	0.45
1:A:906:HIS:NE2	1:A:910:ARG:HG3	2.31	0.45
1:A:995:LEU:O	1:A:995:LEU:HD13	2.16	0.45
1:B:625:VAL:CG1	1:B:626:PHE:N	2.80	0.45
1:B:734:LEU:HD22	1:B:818:LEU:CD2	2.45	0.45
1:B:936:LEU:N	1:B:936:LEU:CD2	2.77	0.45
1:A:122:LEU:HD22	1:A:122:LEU:C	2.36	0.45
1:A:220:ASN:N	1:A:220:ASN:ND2	2.51	0.45
1:A:350:MSE:HE3	1:A:350:MSE:HB2	1.61	0.45
1:A:623:GLU:OE1	1:A:623:GLU:HA	2.16	0.45
1:A:122:LEU:HD23	1:A:122:LEU:HA	1.63	0.45
1:A:506:ASN:O	1:A:508:THR:N	2.50	0.45
1:A:622:ARG:NH1	1:A:683:LEU:CD1	2.80	0.45
1:A:644:ALA:HB3	1:A:709:MSE:CE	2.46	0.45
1:A:20:ILE:HD11	1:A:115:ILE:CG2	2.46	0.45
1:A:87:LYS:HZ1	1:A:107:TYR:HA	1.82	0.45
1:A:343:GLN:H	1:A:343:GLN:HG3	1.55	0.45
1:A:593:GLN:HG2	1:A:593:GLN:H	1.58	0.45
1:B:189:VAL:O	1:B:192:VAL:N	2.49	0.45

*Continued on next page...*

*Continued from previous page...*

Atom-1	Atom-2	Interatomic distance (Å)	Clash overlap (Å)
1:B:227:LEU:HD22	1:B:227:LEU:HA	1.71	0.45
1:B:354[A]:GLN:HG2	1:B:355:GLN:N	2.32	0.45
1:B:731:LYS:NZ	1:B:731:LYS:CB	2.79	0.45
1:A:172:ALA:HB2	1:A:195:MSE:HE2	1.98	0.45
1:A:615:ALA:HA	1:A:616:PRO:HD2	1.59	0.45
1:A:893:VAL:CG2	1:A:938:ARG:HD3	2.44	0.45
1:B:108:LEU:O	1:B:112:SER:N	2.49	0.45
1:B:131:VAL:O	1:B:135:ILE:HG13	2.17	0.45
1:B:157:LEU:HD23	1:B:158:VAL:N	2.32	0.45
1:B:168:MSE:HE3	1:B:202:LEU:HB2	1.98	0.45
1:B:419:ALA:O	1:B:422:CYS:HB2	2.16	0.45
1:B:836:GLN:HE22	1:B:837:PRO:HD2	1.79	0.45
1:A:61:THR:O	1:A:65:THR:HB	2.16	0.45
1:A:87:LYS:NZ	1:A:107:TYR:O	2.45	0.45
1:A:225:GLU:O	1:A:229:ASN:OD1	2.34	0.45
1:A:277:LEU:HA	1:A:277:LEU:HD23	1.43	0.45
1:A:331:MSE:HE1	1:A:355:GLN:HG2	1.97	0.45
1:A:456:SER:O	1:A:458:GLU:HG2	2.16	0.45
1:A:756:ILE:HG22	1:A:797:MSE:CE	2.46	0.45
1:A:880:GLU:HG3	1:A:915:LYS:HE3	1.97	0.45
1:A:933:MSE:C	1:A:935:ARG:H	2.20	0.45
1:B:154:MSE:HE3	1:B:158:VAL:HB	1.97	0.45
1:B:499:GLN:NE2	1:B:514:VAL:CG1	2.80	0.45
1:B:618:ASP:OD1	1:B:618:ASP:O	2.35	0.45
1:A:341:ARG:HB3	1:A:343:GLN:HE21	1.82	0.45
1:A:351:GLN:HA	1:A:351:GLN:NE2	2.32	0.45
1:B:819:ASP:OD1	1:B:823:ARG:NH1	2.50	0.45
1:A:280:ALA:HB1	1:A:299:ILE:HG13	1.99	0.45
1:B:40:LEU:C	1:B:43:PRO:HD2	2.35	0.45
1:B:258:TRP:CE3	1:B:258:TRP:C	2.90	0.45
1:B:277:LEU:HD13	1:B:281:LYS:HE2	1.99	0.45
1:B:458:GLU:C	1:B:460:ARG:H	2.20	0.45
1:A:70:LEU:HD23	1:A:70:LEU:C	2.37	0.45
1:A:101:SER:O	1:A:105:ARG:HD2	2.17	0.45
1:A:266:MSE:CG	1:A:309:VAL:HG22	2.41	0.45
1:A:270:LEU:HD21	1:A:367:VAL:HG23	1.99	0.45
1:A:836:GLN:CD	1:A:837:PRO:HD2	2.37	0.45
1:B:523:VAL:HG12	1:B:527:HIS:CE1	2.51	0.45
1:A:734:LEU:HD13	1:A:822:TYR:CE1	2.52	0.45
1:A:993:THR:O	1:A:996:LYS:HB2	2.17	0.45
1:B:16:VAL:CG1	1:B:17:ALA:N	2.77	0.45

*Continued on next page...*



*Continued from previous page...*

Atom-1	Atom-2	Interatomic distance (Å)	Clash overlap (Å)
1:B:615:ALA:HA	1:B:616:PRO:HD2	1.71	0.45
1:B:1005:MSE:HE1	1:B:1015:GLU:CG	2.39	0.45
1:B:1053:GLY:O	1:B:1054:PHE:HD1	1.99	0.45
1:A:95:LEU:HD21	1:A:105:ARG:HG3	1.99	0.44
1:A:544:LYS:H	1:A:544:LYS:HG2	1.42	0.44
1:B:95:LEU:HD11	1:B:104:ALA:CB	2.45	0.44
1:B:190:MSE:HE1	1:B:246:ARG:HH12	1.83	0.44
1:A:444:LYS:NZ	1:A:444:LYS:CB	2.78	0.44
1:A:551:LEU:CB	1:A:576:LEU:HD13	2.45	0.44
1:A:633:PHE:HD2	1:A:676:VAL:HG23	1.79	0.44
1:B:445:LEU:HD23	1:B:449:ARG:HD2	1.99	0.44
1:B:551:LEU:HD11	1:B:575:GLN:HB3	1.98	0.44
1:B:604:THR:N	1:B:605:PRO:HD2	2.32	0.44
1:B:633:PHE:CE2	1:B:676:VAL:HG23	2.52	0.44
1:B:734:LEU:CD2	1:B:818:LEU:HD23	2.47	0.44
1:B:978:ARG:HG3	1:B:979:THR:N	2.31	0.44
1:A:102:VAL:N	1:A:103:PRO:CD	2.80	0.44
1:A:943:THR:O	1:A:946:ALA:N	2.50	0.44
1:B:369:ASN:O	1:B:373:LYS:HG3	2.16	0.44
1:B:743:ASN:HB2	1:B:745:GLN:NE2	2.32	0.44
1:B:744:ILE:HG13	1:B:808:ILE:CG2	2.47	0.44
1:B:836:GLN:OE1	1:B:836:GLN:HA	2.07	0.44
1:B:924:LYS:HZ1	1:B:1061:LYS:NZ	2.16	0.44
1:A:14:GLU:HG2	1:A:993:THR:CG2	2.48	0.44
1:A:87:LYS:NZ	1:A:107:TYR:CA	2.81	0.44
1:A:622:ARG:O	1:A:623:GLU:CB	2.64	0.44
1:A:880:GLU:CG	1:A:915:LYS:NZ	2.81	0.44
1:A:926:MSE:HE2	1:A:957:ALA:C	2.38	0.44
1:B:88:LEU:HD11	1:B:111:GLY:C	2.38	0.44
1:B:331:MSE:HE2	1:B:331:MSE:HB3	1.95	0.44
1:B:501:GLN:NE2	1:B:501:GLN:CA	2.78	0.44
1:B:595:VAL:HG11	1:B:717:ILE:CD1	2.48	0.44
1:B:658:VAL:HG13	1:B:662:GLN:HE21	1.81	0.44
1:B:904:GLN:HB3	1:B:1035:LYS:HE2	2.00	0.44
1:B:1004:THR:HG22	1:B:1005:MSE:CG	2.46	0.44
1:A:706:VAL:O	1:A:709:MSE:N	2.51	0.44
1:B:63:GLN:O	1:B:65:THR:N	2.44	0.44
1:B:153:THR:CG2	1:B:154:MSE:H	2.18	0.44
1:B:512:ARG:HH11	1:B:512:ARG:HB3	1.77	0.44
1:B:990:THR:O	1:B:994:GLN:HG2	2.18	0.44
1:A:27:HIS:ND1	1:A:27:HIS:O	2.50	0.44

*Continued on next page...*

*Continued from previous page...*

Atom-1	Atom-2	Interatomic distance (Å)	Clash overlap (Å)
1:A:71:LYS:O	1:A:75:PRO:HG2	2.18	0.44
1:A:204:VAL:HG22	1:A:698:MSE:HE1	1.99	0.44
1:A:1004:THR:HG22	1:A:1005:MSE:CG	2.47	0.44
1:B:1014:GLU:HA	1:B:1017:GLU:OE2	2.18	0.44
1:A:1030:LEU:O	1:A:1034:VAL:HG23	2.18	0.44
1:B:448:LEU:N	1:B:448:LEU:CD1	2.80	0.44
1:A:838:GLN:CD	1:A:839:GLU:H	2.21	0.44
1:B:27:HIS:CE1	1:B:108:LEU:HB3	2.53	0.44
1:B:266:MSE:HE2	1:B:309:VAL:HG13	2.00	0.44
1:B:341[B]:ARG:CG	1:B:343:GLN:NE2	2.79	0.44
1:B:538[A]:ARG:HD2	1:B:539:GLN:NE2	2.33	0.44
1:B:570:ARG:HD2	1:B:570:ARG:HA	1.72	0.44
1:B:912:TRP:HB2	1:B:920:ILE:HG13	2.00	0.44
1:A:45:ALA:O	1:A:48:GLN:HB3	2.18	0.44
1:A:159:THR:HA	1:A:162:LYS:NZ	2.32	0.44
1:A:580:LEU:O	1:A:583:LEU:N	2.51	0.44
1:A:898:MSE:HE3	1:A:1024:VAL:N	2.33	0.44
1:B:211:ILE:HG13	1:B:690:ALA:O	2.16	0.44
1:B:445:LEU:HD21	1:B:449:ARG:HE	1.80	0.44
1:B:795:SER:N	1:B:796:PRO:CD	2.80	0.44
1:B:930:MSE:HG2	1:B:954:ILE:HD11	1.98	0.44
1:A:4:PHE:CZ	1:A:998:LEU:HD21	2.40	0.43
1:A:317:GLU:O	1:A:321:ILE:HG13	2.18	0.43
1:A:383:SER:O	1:A:386:LYS:HG3	2.17	0.43
1:A:448:LEU:HA	1:A:451:GLN:HG3	1.98	0.43
1:A:898:MSE:CE	1:A:1024:VAL:CA	2.96	0.43
1:A:899:MSE:HG3	1:A:903:ARG:NH1	2.33	0.43
1:B:177:GLU:O	1:B:180:GLN:HB2	2.18	0.43
1:B:233:THR:CG2	1:B:237:MSE:CE	2.96	0.43
1:B:626:PHE:CD1	1:B:627:ASP:N	2.86	0.43
1:B:885:PHE:HA	1:B:886:PRO:HD3	1.67	0.43
1:B:943:THR:O	1:B:946:ALA:N	2.50	0.43
1:B:974:ASP:CG	1:B:977:ILE:HG13	2.39	0.43
1:B:1057:ARG:NH1	1:B:1057:ARG:CG	2.81	0.43
1:A:68:GLN:HB3	1:A:396:ALA:HB1	2.00	0.43
1:A:384:ILE:HD11	1:A:415:ALA:CA	2.48	0.43
1:A:530:ALA:C	1:A:532:VAL:N	2.71	0.43
1:A:591:MSE:HE3	1:A:591:MSE:HB3	1.96	0.43
1:A:769:ARG:HH12	1:A:976:ARG:NH2	2.14	0.43
1:B:653:ALA:HB1	1:B:658:VAL:CG2	2.42	0.43
1:B:666:LYS:O	1:B:669:ARG:HB2	2.17	0.43

*Continued on next page...*

*Continued from previous page...*

Atom-1	Atom-2	Interatomic distance (Å)	Clash overlap (Å)
1:A:447:ASP:HA	1:A:450:ARG:NH1	2.29	0.43
1:A:606:ILE:CD1	1:A:699:LYS:HG3	2.48	0.43
1:A:914:SER:H	1:A:915:LYS:CE	2.26	0.43
1:B:40:LEU:CD2	1:B:44:VAL:HG23	2.46	0.43
1:B:94:MSE:H	1:B:94:MSE:HG3	1.40	0.43
1:B:369:ASN:CG	1:B:373:LYS:HE2	2.38	0.43
1:B:547:ARG:O	1:B:550[A]:GLN:HB2	2.17	0.43
1:B:656:SER:O	1:B:659:GLU:HB2	2.18	0.43
1:A:40:LEU:N	1:A:40:LEU:CD2	2.79	0.43
1:A:227:LEU:HD13	1:A:230:ARG:NH1	2.33	0.43
1:A:227:LEU:O	1:A:231:ASN:HB2	2.18	0.43
1:A:236:LYS:O	1:A:239:ALA:HB3	2.19	0.43
1:A:280:ALA:HB1	1:A:299:ILE:CG1	2.48	0.43
1:A:760:ALA:HB1	1:A:794:ILE:HD11	2.00	0.43
1:A:825:LEU:HA	1:A:828:VAL:HG22	2.00	0.43
1:A:885:PHE:CE2	1:A:899:MSE:CE	3.01	0.43
1:B:59:LYS:CA	1:B:62:VAL:HG23	2.48	0.43
1:B:395:LEU:HD13	1:B:467:ALA:HB2	2.01	0.43
1:B:793:THR:CG2	1:B:824:ILE:HA	2.47	0.43
1:A:223:ILE:HG13	1:A:223:ILE:H	1.44	0.43
1:A:229:ASN:OD1	1:A:229:ASN:N	2.50	0.43
1:A:291:PRO:HB3	1:A:336:ALA:HB1	2.01	0.43
1:A:501:GLN:NE2	1:A:501:GLN:CA	2.82	0.43
1:A:625:VAL:CG1	1:A:626:PHE:N	2.81	0.43
1:A:633:PHE:CE2	1:A:676:VAL:HG23	2.53	0.43
1:A:750:VAL:CG1	1:A:751:ALA:N	2.80	0.43
1:B:42:ALA:H	1:B:43:PRO:HD2	1.83	0.43
1:B:158:VAL:HG12	1:B:159:THR:N	2.34	0.43
1:B:185:GLN:O	1:B:189:VAL:HG23	2.18	0.43
1:B:227:LEU:CD2	1:B:230:ARG:NH1	2.82	0.43
1:B:350:MSE:HE3	1:B:350:MSE:HB2	1.80	0.43
1:B:406:GLU:OE1	1:B:406:GLU:HA	2.17	0.43
1:B:896:GLN:HB3	1:B:897:PRO:HD3	2.01	0.43
1:A:14:GLU:HB3	1:A:15:PRO:HD3	2.01	0.43
1:A:186:GLU:O	1:A:190:MSE:HG3	2.18	0.43
1:A:212:PHE:O	1:A:214:THR:N	2.41	0.43
1:A:258:TRP:CE2	1:A:488:LYS:HD3	2.53	0.43
1:A:309:VAL:HG11	1:A:367:VAL:HB	2.01	0.43
1:A:728:GLU:OE2	1:A:731:LYS:HE3	2.18	0.43
1:A:1002:LYS:NZ	1:A:1020:THR:OG1	2.51	0.43
1:B:216:LYS:CB	1:B:223:ILE:HG21	2.41	0.43

*Continued on next page...*

*Continued from previous page...*

Atom-1	Atom-2	Interatomic distance (Å)	Clash overlap (Å)
1:B:460:ARG:HH11	1:B:460:ARG:CA	2.31	0.43
1:B:738:LYS:CA	1:B:741:MSE:HE2	2.36	0.43
1:B:838:GLN:O	1:B:838:GLN:HG2	2.18	0.43
1:B:840:PRO:C	1:B:842:PHE:H	2.20	0.43
1:B:933:MSE:C	1:B:935:ARG:H	2.21	0.43
1:A:496:LYS:HD2	1:A:522:LEU:HD13	2.01	0.43
1:A:568:GLN:HA	1:A:571:ALA:HB3	2.01	0.43
1:A:836:GLN:HE22	1:A:837:PRO:HD2	1.81	0.43
1:A:950:CYS:O	1:A:954:ILE:HG13	2.18	0.43
1:B:56:ARG:HG2	1:B:57:VAL:N	2.34	0.43
1:B:123:LEU:HA	1:B:126:PHE:HD1	1.82	0.43
1:B:154:MSE:HE1	1:B:158:VAL:CG2	2.42	0.43
1:B:301:GLN:O	1:B:304:ASP:HB3	2.19	0.43
1:B:335:VAL:C	1:B:337:ASP:N	2.72	0.43
1:B:537:TYR:O	1:B:537:TYR:HD1	2.00	0.43
1:B:719:THR:HG22	1:B:723:LEU:HD21	1.97	0.43
1:B:955:ALA:HA	1:B:958:SER:HB2	2.01	0.43
1:A:541:LEU:HD23	1:A:541:LEU:HA	1.80	0.43
1:A:756:ILE:HG21	1:A:797:MSE:HE2	1.97	0.43
1:B:15:PRO:O	1:B:18:GLN:CB	2.67	0.43
1:B:98:ASP:HA	1:B:99:PRO:HD2	1.69	0.43
1:B:144:TYR:HE2	1:B:160:TYR:CD1	2.37	0.43
1:B:263:THR:HG22	1:B:374:LEU:HG	2.00	0.43
1:B:285:ARG:O	1:B:286:ASP:HB2	2.19	0.43
1:B:994:GLN:HG2	1:B:994:GLN:H	1.56	0.43
1:A:10:GLU:O	1:A:14:GLU:HB2	2.19	0.43
1:A:641:GLY:O	1:A:645:GLU:HG3	2.19	0.43
1:A:936:LEU:HD23	1:A:936:LEU:H	1.83	0.43
1:A:1042:GLU:HA	1:A:1045:SER:HB3	2.00	0.43
1:B:61:THR:CG2	1:B:70:LEU:HD11	2.48	0.43
1:B:177:GLU:H	1:B:177:GLU:HG3	1.62	0.43
1:B:202:LEU:N	1:B:203:PRO:CD	2.82	0.43
1:B:270:LEU:HD21	1:B:367:VAL:CG2	2.49	0.43
1:B:900:MSE:HE3	1:B:904:GLN:HE22	1.84	0.43
1:A:683:LEU:HD13	1:A:683:LEU:C	2.40	0.43
1:A:698:MSE:O	1:A:701:GLN:HB3	2.19	0.43
1:B:7:ARG:CG	1:B:7:ARG:NH1	2.78	0.43
1:B:122:LEU:HD23	1:B:122:LEU:HA	1.83	0.43
1:B:270:LEU:HD22	1:B:270:LEU:HA	1.71	0.43
1:B:466:VAL:CG1	1:B:467:ALA:N	2.82	0.43
1:B:926:MSE:HE2	1:B:957:ALA:CB	2.49	0.43

*Continued on next page...*

*Continued from previous page...*

Atom-1	Atom-2	Interatomic distance (Å)	Clash overlap (Å)
1:B:936:LEU:HD12	1:B:947:LEU:HA	2.01	0.43
1:A:613:ALA:O	1:A:682:LEU:HD11	2.18	0.42
1:A:978:ARG:O	1:A:982:LEU:HG	2.19	0.42
1:B:759:ARG:O	1:B:763:ILE:HG13	2.19	0.42
1:A:221:GLN:O	1:A:684:ARG:HB3	2.19	0.42
1:A:650:VAL:O	1:A:650:VAL:CG2	2.66	0.42
1:A:1042:GLU:HB2	1:A:1058:TRP:CD2	2.54	0.42
1:B:15:PRO:O	1:B:18:GLN:HB2	2.18	0.42
1:B:22:HIS:O	1:B:26:MSE:HG2	2.18	0.42
1:B:212:PHE:CE1	1:B:227:LEU:HD23	2.53	0.42
1:B:882:ASP:O	1:B:883:GLU:O	2.37	0.42
1:B:950:CYS:O	1:B:954:ILE:HG13	2.20	0.42
1:A:61:THR:CG2	1:A:70:LEU:HD11	2.50	0.42
1:A:122:LEU:HD13	1:A:126:PHE:CE1	2.53	0.42
1:A:343:GLN:HB2	1:A:346:SER:HB2	2.01	0.42
1:A:485:ARG:HE	1:A:485:ARG:HB2	1.60	0.42
1:A:607:LYS:O	1:A:610:ALA:N	2.52	0.42
1:A:1049:ARG:HG3	1:A:1050:THR:N	2.33	0.42
1:A:88:LEU:HD11	1:A:111:GLY:C	2.39	0.42
1:A:423:ASP:O	1:A:425:PRO:HD3	2.19	0.42
1:A:566:SER:HB3	1:A:567:PRO:CD	2.49	0.42
1:A:658:VAL:HG13	1:A:662:GLN:HE21	1.85	0.42
1:A:804:VAL:O	1:A:804:VAL:HG12	2.20	0.42
1:A:899:MSE:HE2	1:A:903:ARG:NH2	2.34	0.42
1:A:1018:GLN:O	1:A:1021:GLU:HB2	2.20	0.42
1:B:60:GLU:O	1:B:64:THR:OG1	2.37	0.42
1:B:501:GLN:O	1:B:502:ARG:C	2.58	0.42
1:A:268:ARG:CZ	1:A:669:ARG:HH11	2.32	0.42
1:A:331:MSE:HE2	1:A:331:MSE:HB3	1.88	0.42
1:A:447:ASP:C	1:A:449:ARG:H	2.23	0.42
1:B:126:PHE:O	1:B:129:ALA:HB3	2.19	0.42
1:B:445:LEU:HD11	1:B:463:ALA:HB2	2.01	0.42
1:A:37:ILE:CG2	1:A:38:PRO:CD	2.97	0.42
1:A:104:ALA:C	1:A:106:ASP:H	2.22	0.42
1:A:262:ASP:OD2	1:A:485:ARG:HD2	2.20	0.42
1:A:671:LEU:H	1:A:671:LEU:CD2	2.19	0.42
1:A:804:VAL:HG12	1:A:808:ILE:HA	2.02	0.42
1:A:915:LYS:N	1:A:915:LYS:HD3	2.35	0.42
1:B:14:GLU:CA	1:B:997:ILE:HD11	2.41	0.42
1:B:555:LEU:HD23	1:B:555:LEU:C	2.40	0.42
1:B:571:ALA:O	1:B:575:GLN:HB2	2.19	0.42

*Continued on next page...*

*Continued from previous page...*

Atom-1	Atom-2	Interatomic distance (Å)	Clash overlap (Å)
1:B:883:GLU:CG	1:B:884:GLU:H	2.32	0.42
1:B:1001:VAL:CG1	1:B:1002:LYS:N	2.81	0.42
1:B:1002:LYS:NZ	1:B:1020:THR:OG1	2.29	0.42
1:A:152:GLU:OE1	1:A:216:LYS:NZ	2.30	0.42
1:A:284:LEU:HD13	1:A:357:SER:HB2	2.01	0.42
1:A:440:ALA:HB3	1:A:441:LEU:HD23	2.00	0.42
1:B:28:GLU:OE2	1:B:944:LYS:NZ	2.30	0.42
1:B:94:MSE:HE2	1:B:94:MSE:HB2	1.96	0.42
1:B:512:ARG:NH1	1:B:512:ARG:HG3	2.34	0.42
1:B:898:MSE:HE3	1:B:1024:VAL:CA	2.49	0.42
1:A:212:PHE:C	1:A:214:THR:H	2.19	0.42
1:A:529:LEU:CD1	1:A:587:MSE:HB3	2.49	0.42
1:A:650:VAL:O	1:A:650:VAL:HG22	2.18	0.42
1:A:685:ASN:O	1:A:686:PRO:O	2.37	0.42
1:A:886:PRO:C	1:A:887:GLU:HG3	2.39	0.42
1:B:815:LYS:N	1:B:815:LYS:HD3	2.34	0.42
1:B:896:GLN:CG	1:B:897:PRO:HD3	2.50	0.42
1:B:988:ILE:HG22	1:B:989:PRO:N	2.34	0.42
1:A:14:GLU:HB3	1:A:15:PRO:CD	2.50	0.42
1:A:137:VAL:O	1:A:141:ILE:HG12	2.19	0.42
1:A:168:MSE:HE2	1:A:202:LEU:HD12	2.01	0.42
1:A:185:GLN:O	1:A:188:ARG:HB2	2.20	0.42
1:A:397:ASP:C	1:A:399:ASN:H	2.22	0.42
1:A:440:ALA:HB1	1:A:444:LYS:HD2	2.02	0.42
1:A:745:GLN:O	1:A:748:MSE:N	2.52	0.42
1:A:754:THR:HG22	1:A:758:ARG:NH2	2.35	0.42
1:A:833:GLU:C	1:A:835:PHE:N	2.74	0.42
1:B:54:LEU:HD23	1:B:54:LEU:HA	1.73	0.42
1:B:256:ASP:CG	1:B:259:ALA:HB2	2.39	0.42
1:B:504:ILE:HD12	1:B:576:LEU:HD23	2.01	0.42
1:B:756:ILE:HG22	1:B:797:MSE:CE	2.49	0.42
1:B:924:LYS:NZ	1:B:1061:LYS:NZ	2.67	0.42
1:A:148:ALA:O	1:A:209:MSE:HE1	2.19	0.42
1:A:278:ASN:O	1:A:281:LYS:N	2.51	0.42
1:A:785:ALA:O	1:A:788:ASP:N	2.49	0.42
1:A:795:SER:N	1:A:796:PRO:CD	2.83	0.42
1:B:79:ILE:N	1:B:79:ILE:CD1	2.83	0.42
1:B:236:LYS:O	1:B:239:ALA:HB3	2.20	0.42
1:B:505:ASP:O	1:B:507:PRO:HD3	2.20	0.42
1:B:974:ASP:OD1	1:B:977:ILE:HG13	2.20	0.42
1:A:1:MSE:HA	1:A:1018:GLN:OE1	2.19	0.41

*Continued on next page...*

*Continued from previous page...*

Atom-1	Atom-2	Interatomic distance (Å)	Clash overlap (Å)
1:A:926:MSE:HE2	1:A:957:ALA:HB3	2.01	0.41
1:A:984:VAL:O	1:A:984:VAL:HG12	2.20	0.41
1:B:182:LEU:HD13	1:B:182:LEU:N	2.35	0.41
1:B:189:VAL:HG12	1:B:193:ASN:OD1	2.19	0.41
1:B:205:LEU:CD1	1:B:234:VAL:HG23	2.50	0.41
1:B:582:ASP:O	1:B:586:ARG:HB2	2.20	0.41
1:B:737:CYS:SG	1:B:817:PHE:CZ	3.09	0.41
1:A:807:ASN:CB	1:A:810:ASP:HB3	2.27	0.41
1:A:896:GLN:CG	1:A:897:PRO:HD3	2.49	0.41
1:A:919:ILE:HD11	1:A:964:LEU:HB2	2.02	0.41
1:B:196:ASN:O	1:B:199:LYS:HB2	2.19	0.41
1:B:458:GLU:HG2	1:B:459:ALA:H	1.83	0.41
1:A:78:PHE:O	1:A:82:GLU:OE1	2.38	0.41
1:A:162:LYS:HG3	1:A:162:LYS:H	1.68	0.41
1:A:287:PRO:HG3	1:A:350:MSE:CG	2.45	0.41
1:A:888:GLN:H	1:A:888:GLN:HG2	1.37	0.41
1:B:227:LEU:HD22	1:B:230:ARG:CZ	2.50	0.41
1:B:298:ALA:O	1:B:302:ILE:HD12	2.20	0.41
1:B:444:LYS:NZ	1:B:444:LYS:CB	2.81	0.41
1:B:1018:GLN:O	1:B:1021:GLU:N	2.53	0.41
1:A:458:GLU:HG2	1:A:459:ALA:N	2.36	0.41
1:A:506:ASN:HB3	1:A:509:VAL:CG1	2.51	0.41
1:B:14:GLU:N	1:B:15:PRO:CD	2.82	0.41
1:B:63:GLN:C	1:B:65:THR:H	2.22	0.41
1:B:202:LEU:CB	1:B:203:PRO:CD	2.98	0.41
1:B:376:ALA:HB3	1:B:421:LEU:HD21	2.02	0.41
1:B:566:SER:CB	1:B:567:PRO:CD	2.98	0.41
1:B:655:LYS:HA	1:B:655:LYS:HD2	1.34	0.41
1:B:811:PRO:HA	1:B:814:GLN:HG3	2.02	0.41
1:B:894:ILE:HA	1:B:934:SER:O	2.20	0.41
1:B:930:MSE:O	1:B:933:MSE:N	2.42	0.41
1:A:19:GLN:O	1:A:22[A]:HIS:HB3	2.20	0.41
1:A:385:ALA:HA	1:A:474:GLN:HE22	1.86	0.41
1:A:441:LEU:HA	1:A:444:LYS:CE	2.51	0.41
1:A:445:LEU:HD23	1:A:445:LEU:C	2.40	0.41
1:A:506:ASN:C	1:A:508:THR:H	2.22	0.41
1:A:919:ILE:HG23	1:A:961:VAL:HG12	2.02	0.41
1:B:14:GLU:HB3	1:B:15:PRO:CD	2.50	0.41
1:B:22:HIS:CB	1:B:25:ILE:CD1	2.95	0.41
1:B:159:THR:HA	1:B:162:LYS:HZ1	1.84	0.41
1:B:916:GLY:O	1:B:1057:ARG:HB2	2.20	0.41

*Continued on next page...*



*Continued from previous page...*

Atom-1	Atom-2	Interatomic distance (Å)	Clash overlap (Å)
1:B:1050:THR:C	1:B:1052:ALA:N	2.72	0.41
1:A:290:SER:O	1:A:293:ASP:OD1	2.38	0.41
1:B:174:MSE:HE2	1:B:174:MSE:HB3	1.73	0.41
1:B:178:ARG:HA	1:B:178:ARG:HD2	1.89	0.41
1:B:501:GLN:O	1:B:504:ILE:N	2.53	0.41
1:B:732:LYS:O	1:B:736:LYS:HG3	2.21	0.41
1:B:829:ALA:O	1:B:833:GLU:OE2	2.39	0.41
1:B:894:ILE:HD13	1:B:894:ILE:HA	1.95	0.41
1:A:74:MSE:HE2	1:A:74:MSE:HB3	1.98	0.41
1:A:88:LEU:CD2	1:A:108:LEU:CD1	2.99	0.41
1:A:377:MSE:HE1	1:A:418:ILE:HA	2.02	0.41
1:A:633:PHE:HD2	1:A:676:VAL:CG2	2.34	0.41
1:A:939:GLY:HA2	1:A:1006:LEU:HD11	2.03	0.41
1:B:20:ILE:CD1	1:B:115:ILE:CG2	2.99	0.41
1:B:22:HIS:CA	1:B:25:ILE:HD11	2.51	0.41
1:B:40:LEU:O	1:B:43:PRO:HG2	2.21	0.41
1:B:212:PHE:O	1:B:214:THR:N	2.44	0.41
1:B:461:ALA:O	1:B:465:GLN:HB3	2.21	0.41
1:B:506:ASN:HB3	1:B:509:VAL:HG13	1.97	0.41
1:B:996:LYS:O	1:B:999:SER:N	2.54	0.41
1:A:75:PRO:CA	1:A:78:PHE:CE2	3.00	0.41
1:A:196:ASN:O	1:A:199:LYS:HB2	2.21	0.41
1:A:460:ARG:HG3	1:A:461:ALA:N	2.36	0.41
1:A:491:VAL:HG11	1:A:658:VAL:CG1	2.32	0.41
1:A:512:ARG:NH1	1:A:512:ARG:HG3	2.35	0.41
1:B:70:LEU:C	1:B:70:LEU:HD23	2.40	0.41
1:B:583:LEU:HD23	1:B:583:LEU:HA	1.72	0.41
1:B:733:ASP:HB3	1:B:756:ILE:HG13	2.03	0.41
1:B:1001:VAL:O	1:B:1004:THR:N	2.51	0.41
1:A:20:ILE:HD12	1:A:116:LEU:HD21	2.02	0.41
1:A:190:MSE:HE2	1:A:247:VAL:HG21	2.02	0.41
1:A:201:LEU:HD23	1:A:201:LEU:HA	1.86	0.41
1:A:744:ILE:HD12	1:A:744:ILE:H	1.86	0.41
1:A:896:GLN:HG3	1:A:897:PRO:CD	2.51	0.41
1:A:933:MSE:HE2	1:A:947:LEU:HD21	2.03	0.41
1:B:1:MSE:O	1:B:3:VAL:N	2.54	0.41
1:B:152:GLU:OE1	1:B:216:LYS:NZ	2.35	0.41
1:B:153:THR:O	1:B:213:VAL:HG11	2.20	0.41
1:B:253:TRP:C	1:B:255:GLU:H	2.21	0.41
1:B:506:ASN:C	1:B:508:THR:N	2.74	0.41
1:B:626:PHE:O	1:B:629:ARG:N	2.43	0.41

*Continued on next page...*

*Continued from previous page...*

Atom-1	Atom-2	Interatomic distance (Å)	Clash overlap (Å)
1:B:644:ALA:HB2	1:B:709:MSE:HE2	1.95	0.41
1:B:731:LYS:CB	1:B:731:LYS:HZ2	2.33	0.41
1:B:749:LEU:C	1:B:749:LEU:HD13	2.41	0.41
1:A:13:LEU:HD13	1:A:13:LEU:HA	1.84	0.41
1:A:69:ILE:N	1:A:69:ILE:CD1	2.80	0.41
1:B:14:GLU:CB	1:B:15:PRO:CD	2.99	0.41
1:B:154:MSE:CE	1:B:158:VAL:CG2	2.98	0.41
1:B:243:GLU:OE2	1:B:246:ARG:NH1	2.53	0.41
1:B:500:ALA:O	1:B:504:ILE:HG12	2.21	0.41
1:A:37:ILE:CD1	1:A:105:ARG:NE	2.80	0.40
1:A:218:SER:HB3	1:A:220:ASN:ND2	2.36	0.40
1:A:501:GLN:O	1:A:502:ARG:C	2.59	0.40
1:A:731:LYS:HB3	1:A:731:LYS:HZ2	1.86	0.40
1:A:880:GLU:HG3	1:A:915:LYS:HZ2	1.83	0.40
1:A:895:ASN:HB2	1:A:937:VAL:HG11	2.04	0.40
1:B:335:VAL:O	1:B:337:ASP:N	2.54	0.40
1:B:734:LEU:CD2	1:B:818:LEU:CD2	2.99	0.40
1:B:811:PRO:CA	1:B:815:LYS:HE2	2.51	0.40
1:A:460:ARG:HG3	1:A:461:ALA:H	1.86	0.40
1:A:640:LEU:HD23	1:A:640:LEU:HA	1.93	0.40
1:B:40:LEU:CB	1:B:43:PRO:HG2	2.36	0.40
1:B:133:LYS:CD	1:B:136:ARG:HH21	2.34	0.40
1:B:347:PRO:HA	1:B:350:MSE:CE	2.49	0.40
1:B:434:SER:O	1:B:437:GLU:HG2	2.21	0.40
1:B:697:THR:CG2	1:B:698:MSE:HE2	2.26	0.40
1:A:20:ILE:CD1	1:A:115:ILE:CG2	2.99	0.40
1:A:154:MSE:O	1:A:157:LEU:N	2.55	0.40
1:A:574:SER:HA	1:A:577:GLN:HE21	1.85	0.40
1:A:658:VAL:CG1	1:A:662:GLN:HE22	2.34	0.40
1:A:672:THR:O	1:A:676:VAL:HB	2.22	0.40
1:B:190:MSE:HE2	1:B:247:VAL:CG2	2.52	0.40
1:B:733:ASP:OD2	1:B:755:SER:OG	2.35	0.40
1:B:880:GLU:HG2	1:B:881:LYS:N	2.34	0.40
1:A:26:MSE:HA	1:A:29:GLU:HB2	2.02	0.40
1:A:180:GLN:HE21	1:B:358:GLN:CD	2.24	0.40
1:A:506:ASN:C	1:A:508:THR:N	2.75	0.40
1:A:717:ILE:HG22	1:A:722:LEU:HB2	2.03	0.40
1:A:896:GLN:CB	1:A:897:PRO:CD	2.99	0.40
1:B:227:LEU:CD2	1:B:230:ARG:CZ	2.99	0.40
1:B:377:MSE:HG2	1:B:421:LEU:HD23	2.04	0.40
1:B:412:LEU:N	1:B:412:LEU:CD2	2.80	0.40

*Continued on next page...*

Continued from previous page...

Atom-1	Atom-2	Interatomic distance (Å)	Clash overlap (Å)
1:B:491:VAL:CG1	1:B:658:VAL:HG11	2.51	0.40
1:B:506:ASN:O	1:B:508:THR:N	2.54	0.40
1:B:882:ASP:OD2	1:B:1061:LYS:NZ	2.48	0.40
1:B:901:ALA:HB1	1:B:1031:MSE:CG	2.49	0.40
1:A:583:LEU:HD12	1:A:583:LEU:HA	1.93	0.40
1:A:910:ARG:HH12	1:A:1061:LYS:HE2	1.86	0.40
1:B:108:LEU:O	1:B:112:SER:OG	2.34	0.40
1:B:316:LYS:CB	2:B:1108:HOH:O	2.68	0.40
1:B:566:SER:HB3	1:B:567:PRO:CD	2.48	0.40
1:B:731:LYS:NZ	1:B:731:LYS:HB3	2.36	0.40
1:B:898:MSE:HE3	1:B:1024:VAL:HA	2.03	0.40
1:B:919:ILE:HG23	1:B:961:VAL:HG12	2.04	0.40
1:B:996:LYS:O	1:B:998:LEU:N	2.55	0.40

There are no symmetry-related clashes.

## 5.3 Torsion angles [i](#)

### 5.3.1 Protein backbone [i](#)

In the following table, the Percentiles column shows the percent Ramachandran outliers of the chain as a percentile score with respect to all X-ray entries followed by that with respect to entries of similar resolution.

The Analysed column shows the number of residues for which the backbone conformation was analysed, and the total number of residues.

Mol	Chain	Analysed	Favoured	Allowed	Outliers	Percentiles	
1	A	1032/1066 (97%)	849 (82%)	140 (14%)	43 (4%)	2	9
1	B	1032/1066 (97%)	849 (82%)	130 (13%)	53 (5%)	1	6
All	All	2064/2132 (97%)	1698 (82%)	270 (13%)	96 (5%)	2	7

All (96) Ramachandran outliers are listed below:

Mol	Chain	Res	Type
1	A	33	ASP
1	A	402	PRO
1	A	441	LEU
1	A	453	LYS
1	A	686	PRO

Continued on next page...

*Continued from previous page...*

<b>Mol</b>	<b>Chain</b>	<b>Res</b>	<b>Type</b>
1	A	689	GLN
1	A	834	ALA
1	A	896	GLN
1	A	944	LYS
1	B	456	SER
1	B	531	ASN
1	B	655	LYS
1	B	838	GLN
1	B	881	LYS
1	B	883	GLU
1	B	887	GLU
1	B	893	VAL
1	B	896	GLN
1	B	944	LYS
1	B	1050	THR
1	B	1051	ASP
1	A	213	VAL
1	A	291	PRO
1	A	315	GLY
1	A	316	LYS
1	A	440	ALA
1	A	448	LEU
1	A	457	PRO
1	A	531	ASN
1	A	535	GLY
1	A	563	GLU
1	A	632	ASN
1	A	687	GLY
1	A	688	ASN
1	A	705	ASN
1	A	890	ALA
1	A	939	GLY
1	B	34	GLY
1	B	41	THR
1	B	101	SER
1	B	213	VAL
1	B	291	PRO
1	B	335	VAL
1	B	440	ALA
1	B	441	LEU
1	B	535	GLY
1	B	622	ARG

*Continued on next page...*

*Continued from previous page...*

<b>Mol</b>	<b>Chain</b>	<b>Res</b>	<b>Type</b>
1	B	654	ASN
1	B	656	SER
1	B	997	ILE
1	A	50	ALA
1	A	116	LEU
1	A	150	VAL
1	A	228	LYS
1	A	335	VAL
1	A	341	ARG
1	A	512	ARG
1	A	656	SER
1	B	30	GLY
1	B	38	PRO
1	B	116	LEU
1	B	253	TRP
1	B	254	ASP
1	B	316	LYS
1	B	451	GLN
1	B	600	SER
1	B	667	THR
1	B	689	GLN
1	B	892	GLU
1	A	38	PRO
1	A	1051	ASP
1	A	1052	ALA
1	B	64	THR
1	B	228	LYS
1	B	315	GLY
1	B	343	GLN
1	B	452	GLY
1	B	453	LYS
1	B	841	ASP
1	A	293	ASP
1	B	50	ALA
1	B	150	VAL
1	B	286	ASP
1	B	663	ALA
1	B	92	ALA
1	B	457	PRO
1	B	910	ARG
1	A	286	ASP
1	A	840	PRO

*Continued on next page...*

*Continued from previous page...*

Mol	Chain	Res	Type
1	B	292	GLY
1	B	989	PRO
1	A	562	GLY
1	A	292	GLY
1	A	744	ILE
1	A	891	GLY
1	B	744	ILE

### 5.3.2 Protein sidechains [i](#)

In the following table, the Percentiles column shows the percent sidechain outliers of the chain as a percentile score with respect to all X-ray entries followed by that with respect to entries of similar resolution.

The Analysed column shows the number of residues for which the sidechain conformation was analysed, and the total number of residues.

Mol	Chain	Analysed	Rotameric	Outliers	Percentiles	
1	A	850/842 (101%)	587 (69%)	263 (31%)	0	0
1	B	850/842 (101%)	590 (69%)	260 (31%)	0	1
All	All	1700/1684 (101%)	1177 (69%)	523 (31%)	0	0

All (523) residues with a non-rotameric sidechain are listed below:

Mol	Chain	Res	Type
1	A	1	MSE
1	A	3	VAL
1	A	4	PHE
1	A	7	ARG
1	A	10	GLU
1	A	11	SER
1	A	14	GLU
1	A	16	VAL
1	A	18	GLN
1	A	25	ILE
1	A	26	MSE
1	A	28	GLU
1	A	31	GLU
1	A	32	VAL
1	A	35	LYS
1	A	39	ASP

*Continued on next page...*

*Continued from previous page...*

<b>Mol</b>	<b>Chain</b>	<b>Res</b>	<b>Type</b>
1	A	40	LEU
1	A	41	THR
1	A	47	VAL
1	A	52	SER
1	A	54	LEU
1	A	60	GLU
1	A	61	THR
1	A	62	VAL
1	A	65	THR
1	A	69	ILE
1	A	70	LEU
1	A	72	ARG
1	A	74	MSE
1	A	82	GLU
1	A	83	ASN
1	A	87	LYS
1	A	88	LEU
1	A	93	GLN
1	A	94	MSE
1	A	95	LEU
1	A	102	VAL
1	A	106	ASP
1	A	109	ILE
1	A	113	ARG
1	A	115	ILE
1	A	117	SER
1	A	122	LEU
1	A	123	LEU
1	A	134	ILE
1	A	146	THR
1	A	152	GLU
1	A	155	GLU
1	A	156	ASP
1	A	157	LEU
1	A	158	VAL
1	A	162	LYS
1	A	163	ASN
1	A	169	THR
1	A	173	LYS
1	A	175	ILE
1	A	180	GLN
1	A	181	GLU

*Continued on next page...*



*Continued from previous page...*

<b>Mol</b>	<b>Chain</b>	<b>Res</b>	<b>Type</b>
1	A	182	LEU
1	A	202	LEU
1	A	206	ILE
1	A	211	ILE
1	A	214	THR
1	A	220	ASN
1	A	223	ILE
1	A	227	LEU
1	A	228	LYS
1	A	229	ASN
1	A	230	ARG
1	A	236	LYS
1	A	238	SER
1	A	246	ARG
1	A	252	SER
1	A	255	GLU
1	A	256	ASP
1	A	260	SER
1	A	261	LYS
1	A	264	GLU
1	A	266	MSE
1	A	270	LEU
1	A	274	ASP
1	A	275	SER
1	A	277	LEU
1	A	284	LEU
1	A	286	ASP
1	A	293	ASP
1	A	296	GLU
1	A	301	GLN
1	A	316	LYS
1	A	317	GLU
1	A	318	ARG
1	A	319	ARG
1	A	326	LYS
1	A	327	MSE
1	A	341	ARG
1	A	343	GLN
1	A	348	VAL
1	A	350	MSE
1	A	351	GLN
1	A	352	LYS

*Continued on next page...*

*Continued from previous page...*

<b>Mol</b>	<b>Chain</b>	<b>Res</b>	<b>Type</b>
1	A	354[A]	GLN
1	A	354[B]	GLN
1	A	363	LEU
1	A	366	LYS
1	A	367	VAL
1	A	377	MSE
1	A	380	SER
1	A	383	SER
1	A	384	ILE
1	A	386	LYS
1	A	387	LYS
1	A	392	GLN
1	A	393	ASN
1	A	399	ASN
1	A	412	LEU
1	A	416	ARG
1	A	417	LYS
1	A	422	CYS
1	A	423	ASP
1	A	426	LYS
1	A	428	ARG
1	A	429	ASP
1	A	434	SER
1	A	437	GLU
1	A	441	LEU
1	A	444	LYS
1	A	448	LEU
1	A	450	ARG
1	A	451	GLN
1	A	453	LYS
1	A	460	ARG
1	A	464	LYS
1	A	466	VAL
1	A	471	GLN
1	A	485	ARG
1	A	497	ILE
1	A	498	GLU
1	A	501	GLN
1	A	506	ASN
1	A	512	ARG
1	A	522	LEU
1	A	532	VAL

*Continued on next page...*

*Continued from previous page...*

<b>Mol</b>	<b>Chain</b>	<b>Res</b>	<b>Type</b>
1	A	541	LEU
1	A	544	LYS
1	A	551	LEU
1	A	552	THR
1	A	558	LEU
1	A	563	GLU
1	A	566	SER
1	A	568	GLN
1	A	581	LYS
1	A	596	SER
1	A	609	LEU
1	A	622	ARG
1	A	623	GLU
1	A	624	GLU
1	A	625	VAL
1	A	632	ASN
1	A	650	VAL
1	A	655	LYS
1	A	657	THR
1	A	659	GLU
1	A	671	LEU
1	A	676	VAL
1	A	677	SER
1	A	680	ARG
1	A	681	ILE
1	A	682	LEU
1	A	683	LEU
1	A	693	GLU
1	A	703	ILE
1	A	707	GLU
1	A	708	LYS
1	A	721	SER
1	A	726	SER
1	A	731	LYS
1	A	732	LYS
1	A	734	LEU
1	A	745	GLN
1	A	750	VAL
1	A	759	ARG
1	A	762	ARG
1	A	765	LEU
1	A	768	LYS

*Continued on next page...*

*Continued from previous page...*

<b>Mol</b>	<b>Chain</b>	<b>Res</b>	<b>Type</b>
1	A	772	GLU
1	A	784	LYS
1	A	787	SER
1	A	789	GLU
1	A	791	SER
1	A	793	THR
1	A	795	SER
1	A	799	MSE
1	A	808	ILE
1	A	813	LEU
1	A	814	GLN
1	A	815	LYS
1	A	819	ASP
1	A	830	LYS
1	A	832	ARG
1	A	833	GLU
1	A	836	GLN
1	A	841	ASP
1	A	842	PHE
1	A	879	GLU
1	A	880	GLU
1	A	881	LYS
1	A	887	GLU
1	A	888	GLN
1	A	889	LYS
1	A	900	MSE
1	A	905	LEU
1	A	910	ARG
1	A	914	SER
1	A	915	LYS
1	A	918	ASP
1	A	919	ILE
1	A	926	MSE
1	A	930	MSE
1	A	933	MSE
1	A	936	LEU
1	A	944	LYS
1	A	947	LEU
1	A	949	GLN
1	A	956	LYS
1	A	958	SER
1	A	960	GLU

*Continued on next page...*

*Continued from previous page...*

<b>Mol</b>	<b>Chain</b>	<b>Res</b>	<b>Type</b>
1	A	961	VAL
1	A	967	GLU
1	A	978	ARG
1	A	981	LEU
1	A	986	GLU
1	A	987	ARG
1	A	992	SER
1	A	994	GLN
1	A	999	SER
1	A	1001	VAL
1	A	1002	LYS
1	A	1004	THR
1	A	1005	MSE
1	A	1006	LEU
1	A	1008[A]	ARG
1	A	1008[B]	ARG
1	A	1009	THR
1	A	1011	ILE
1	A	1013	ASP
1	A	1016	SER
1	A	1018	GLN
1	A	1020	THR
1	A	1026	ASN
1	A	1036	GLU
1	A	1039	ARG
1	A	1042	GLU
1	A	1045	SER
1	A	1046	ILE
1	A	1048	ILE
1	A	1050	THR
1	A	1054	PHE
1	A	1055	THR
1	A	1056	LEU
1	A	1057[A]	ARG
1	A	1057[B]	ARG
1	A	1060	ARG
1	A	1061	LYS
1	B	3	VAL
1	B	4	PHE
1	B	7	ARG
1	B	10	GLU
1	B	11	SER

*Continued on next page...*

*Continued from previous page...*

<b>Mol</b>	<b>Chain</b>	<b>Res</b>	<b>Type</b>
1	B	14	GLU
1	B	16	VAL
1	B	18	GLN
1	B	22	HIS
1	B	25	ILE
1	B	26	MSE
1	B	28	GLU
1	B	33	ASP
1	B	35	LYS
1	B	37	ILE
1	B	40	LEU
1	B	41	THR
1	B	47	VAL
1	B	52	SER
1	B	54	LEU
1	B	60	GLU
1	B	61	THR
1	B	62	VAL
1	B	65	THR
1	B	70	LEU
1	B	72	ARG
1	B	74	MSE
1	B	79	ILE
1	B	82	GLU
1	B	83	ASN
1	B	87	LYS
1	B	88	LEU
1	B	93	GLN
1	B	94	MSE
1	B	95	LEU
1	B	102	VAL
1	B	106	ASP
1	B	109	ILE
1	B	113	ARG
1	B	115	ILE
1	B	122	LEU
1	B	123	LEU
1	B	133	LYS
1	B	143	GLU
1	B	146	THR
1	B	152	GLU
1	B	155	GLU

*Continued on next page...*

*Continued from previous page...*

<b>Mol</b>	<b>Chain</b>	<b>Res</b>	<b>Type</b>
1	B	156	ASP
1	B	158	VAL
1	B	162	LYS
1	B	163	ASN
1	B	169	THR
1	B	173	LYS
1	B	180	GLN
1	B	181	GLU
1	B	182	LEU
1	B	186	GLU
1	B	202	LEU
1	B	206	ILE
1	B	211	ILE
1	B	214	THR
1	B	223	ILE
1	B	225	GLU
1	B	227	LEU
1	B	228	LYS
1	B	229	ASN
1	B	230	ARG
1	B	236	LYS
1	B	238	SER
1	B	252	SER
1	B	256	ASP
1	B	258	TRP
1	B	260	SER
1	B	261	LYS
1	B	264	GLU
1	B	266	MSE
1	B	270	LEU
1	B	274	ASP
1	B	277	LEU
1	B	284	LEU
1	B	286	ASP
1	B	293	ASP
1	B	296	GLU
1	B	297	GLN
1	B	301	GLN
1	B	316	LYS
1	B	317	GLU
1	B	318	ARG
1	B	319	ARG

*Continued on next page...*



*Continued from previous page...*

<b>Mol</b>	<b>Chain</b>	<b>Res</b>	<b>Type</b>
1	B	326	LYS
1	B	343	GLN
1	B	345	SER
1	B	348	VAL
1	B	350	MSE
1	B	351	GLN
1	B	352	LYS
1	B	354[A]	GLN
1	B	354[B]	GLN
1	B	363	LEU
1	B	366	LYS
1	B	367	VAL
1	B	377	MSE
1	B	386	LYS
1	B	387	LYS
1	B	392	GLN
1	B	393	ASN
1	B	399	ASN
1	B	412	LEU
1	B	417	LYS
1	B	422	CYS
1	B	423	ASP
1	B	426	LYS
1	B	428	ARG
1	B	429	ASP
1	B	433[A]	ARG
1	B	433[B]	ARG
1	B	434	SER
1	B	437	GLU
1	B	441	LEU
1	B	444	LYS
1	B	447	ASP
1	B	448	LEU
1	B	450	ARG
1	B	451	GLN
1	B	464	LYS
1	B	465	GLN
1	B	466	VAL
1	B	471	GLN
1	B	484	SER
1	B	485	ARG
1	B	497	ILE

*Continued on next page...*

*Continued from previous page...*

<b>Mol</b>	<b>Chain</b>	<b>Res</b>	<b>Type</b>
1	B	498	GLU
1	B	501	GLN
1	B	506	ASN
1	B	509	VAL
1	B	512	ARG
1	B	522	LEU
1	B	537	TYR
1	B	541	LEU
1	B	544	LYS
1	B	551	LEU
1	B	552	THR
1	B	558	LEU
1	B	561	ARG
1	B	563	GLU
1	B	565	GLU
1	B	566	SER
1	B	568	GLN
1	B	575	GLN
1	B	577	GLN
1	B	581	LYS
1	B	583	LEU
1	B	586	ARG
1	B	596	SER
1	B	609	LEU
1	B	624	GLU
1	B	625	VAL
1	B	650	VAL
1	B	655	LYS
1	B	671	LEU
1	B	681	ILE
1	B	682	LEU
1	B	683	LEU
1	B	684	ARG
1	B	685	ASN
1	B	689	GLN
1	B	692	TYR
1	B	693	GLU
1	B	703	ILE
1	B	705	ASN
1	B	708	LYS
1	B	721	SER
1	B	726	SER

*Continued on next page...*

*Continued from previous page...*

<b>Mol</b>	<b>Chain</b>	<b>Res</b>	<b>Type</b>
1	B	731	LYS
1	B	732	LYS
1	B	734	LEU
1	B	745	GLN
1	B	750	VAL
1	B	762	ARG
1	B	765	LEU
1	B	768	LYS
1	B	769	ARG
1	B	772	GLU
1	B	784	LYS
1	B	787	SER
1	B	789	GLU
1	B	793	THR
1	B	799	MSE
1	B	807	ASN
1	B	808	ILE
1	B	813	LEU
1	B	814	GLN
1	B	816	SER
1	B	819	ASP
1	B	830	LYS
1	B	831	VAL
1	B	833	GLU
1	B	836	GLN
1	B	839	GLU
1	B	841	ASP
1	B	879	GLU
1	B	880	GLU
1	B	881	LYS
1	B	882	ASP
1	B	887	GLU
1	B	888	GLN
1	B	889	LYS
1	B	900	MSE
1	B	905	LEU
1	B	910	ARG
1	B	914	SER
1	B	915	LYS
1	B	918	ASP
1	B	919	ILE
1	B	920	ILE

*Continued on next page...*

*Continued from previous page...*

<b>Mol</b>	<b>Chain</b>	<b>Res</b>	<b>Type</b>
1	B	926	MSE
1	B	930	MSE
1	B	933	MSE
1	B	935	ARG
1	B	936	LEU
1	B	944	LYS
1	B	945	ARG
1	B	947	LEU
1	B	949	GLN
1	B	956	LYS
1	B	958	SER
1	B	960	GLU
1	B	961	VAL
1	B	967	GLU
1	B	976	ARG
1	B	978	ARG
1	B	981	LEU
1	B	986	GLU
1	B	987	ARG
1	B	994	GLN
1	B	997	ILE
1	B	999	SER
1	B	1002	LYS
1	B	1004	THR
1	B	1005	MSE
1	B	1008	ARG
1	B	1011	ILE
1	B	1012	SER
1	B	1013	ASP
1	B	1016	SER
1	B	1018	GLN
1	B	1020	THR
1	B	1026	ASN
1	B	1036	GLU
1	B	1039	ARG
1	B	1042	GLU
1	B	1045	SER
1	B	1046	ILE
1	B	1050	THR
1	B	1051	ASP
1	B	1055	THR
1	B	1056	LEU

*Continued on next page...*

*Continued from previous page...*

Mol	Chain	Res	Type
1	B	1057	ARG
1	B	1060	ARG
1	B	1062	THR

Sometimes sidechains can be flipped to improve hydrogen bonding and reduce clashes. All (42) such sidechains are listed below:

Mol	Chain	Res	Type
1	A	18	GLN
1	A	180	GLN
1	A	193	ASN
1	A	220	ASN
1	A	279	GLN
1	A	301	GLN
1	A	343	GLN
1	A	351	GLN
1	A	379	ASN
1	A	393	ASN
1	A	472	ASN
1	A	474	GLN
1	A	492	HIS
1	A	550	GLN
1	A	568	GLN
1	A	577	GLN
1	A	593	GLN
1	A	632	ASN
1	A	662	GLN
1	A	701	GLN
1	A	895	ASN
1	A	904	GLN
1	A	949	GLN
1	A	1025	HIS
1	B	93	GLN
1	B	220	ASN
1	B	297	GLN
1	B	301	GLN
1	B	351	GLN
1	B	472	ASN
1	B	539	GLN
1	B	575	GLN
1	B	593	GLN
1	B	662	GLN
1	B	701	GLN

*Continued on next page...*

*Continued from previous page...*

Mol	Chain	Res	Type
1	B	807	ASN
1	B	836	GLN
1	B	888	GLN
1	B	895	ASN
1	B	904	GLN
1	B	949	GLN
1	B	1018	GLN

### 5.3.3 RNA [i](#)

There are no RNA molecules in this entry.

### 5.4 Non-standard residues in protein, DNA, RNA chains [i](#)

There are no non-standard protein/DNA/RNA residues in this entry.

### 5.5 Carbohydrates [i](#)

There are no oligosaccharides in this entry.

### 5.6 Ligand geometry [i](#)

There are no ligands in this entry.

### 5.7 Other polymers [i](#)

There are no such residues in this entry.

### 5.8 Polymer linkage issues [i](#)

There are no chain breaks in this entry.

## 6 Fit of model and data [i](#)

### 6.1 Protein, DNA and RNA chains [i](#)

EDS was not executed - this section is therefore empty.

### 6.2 Non-standard residues in protein, DNA, RNA chains [i](#)

EDS was not executed - this section is therefore empty.

### 6.3 Carbohydrates [i](#)

EDS was not executed - this section is therefore empty.

### 6.4 Ligands [i](#)

EDS was not executed - this section is therefore empty.

### 6.5 Other polymers [i](#)

EDS was not executed - this section is therefore empty.