



Full wwPDB X-ray Structure Validation Report ⓘ

Jun 16, 2024 – 02:07 AM EDT

PDB ID : 2TRX
Title : CRYSTAL STRUCTURE OF THIOREDOXIN FROM ESCHERICHIA COLI
AT 1.68 ANGSTROMS RESOLUTION
Authors : Katti, S.K.; Lemaster, D.M.; Eklund, H.
Deposited on : 1990-03-19
Resolution : 1.68 Å(reported)

This is a Full wwPDB X-ray Structure Validation Report for a publicly released PDB entry.

We welcome your comments at validation@mail.wwpdb.org

A user guide is available at

<https://www.wwpdb.org/validation/2017/XrayValidationReportHelp>

with specific help available everywhere you see the ⓘ symbol.

The types of validation reports are described at

<http://www.wwpdb.org/validation/2017/FAQs#types>.

The following versions of software and data (see [references ⓘ](#)) were used in the production of this report:

MolProbity : 4.02b-467
Mogul : 2022.3.0, CSD as543be (2022)
Xtrriage (Phenix) : **NOT EXECUTED**
EDS : **NOT EXECUTED**
Percentile statistics : 20191225.v01 (using entries in the PDB archive December 25th 2019)
Ideal geometry (proteins) : Engh & Huber (2001)
Ideal geometry (DNA, RNA) : Parkinson et al. (1996)
Validation Pipeline (wwPDB-VP) : 2.37.1

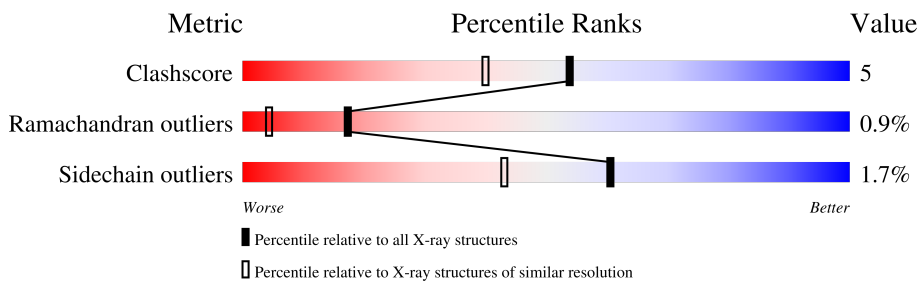
1 Overall quality at a glance

The following experimental techniques were used to determine the structure:

X-RAY DIFFRACTION

The reported resolution of this entry is 1.68 Å.

Percentile scores (ranging between 0-100) for global validation metrics of the entry are shown in the following graphic. The table shows the number of entries on which the scores are based.



Metric	Whole archive (#Entries)	Similar resolution (#Entries, resolution range(Å))
Clashscore	141614	7310 (1.70-1.66)
Ramachandran outliers	138981	7173 (1.70-1.66)
Sidechain outliers	138945	7172 (1.70-1.66)

The table below summarises the geometric issues observed across the polymeric chains and their fit to the electron density. The red, orange, yellow and green segments of the lower bar indicate the fraction of residues that contain outliers for ≥ 3 , 2, 1 and 0 types of geometric quality criteria respectively. A grey segment represents the fraction of residues that are not modelled. The numeric value for each fraction is indicated below the corresponding segment, with a dot representing fractions $\leq 5\%$.

Note EDS was not executed.

Mol	Chain	Length	Quality of chain
1	A	108	
1	B	108	

2 Entry composition [i](#)

There are 4 unique types of molecules in this entry. The entry contains 1886 atoms, of which 0 are hydrogens and 0 are deuteriums.

In the tables below, the ZeroOcc column contains the number of atoms modelled with zero occupancy, the AltConf column contains the number of residues with at least one atom in alternate conformation and the Trace column contains the number of residues modelled with at most 2 atoms.

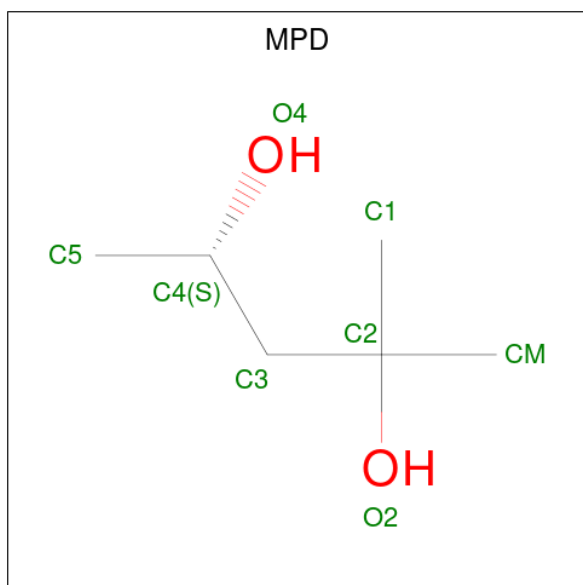
- Molecule 1 is a protein called THIOREDOXIN.

Mol	Chain	Residues	Atoms					ZeroOcc	AltConf	Trace
			Total	C	N	O	S			
1	A	108	Total 849	C 545	N 136	O 165	S 3	0	8	0
1	B	108	Total 839	C 539	N 135	O 162	S 3	0	4	0

- Molecule 2 is COPPER (II) ION (three-letter code: CU) (formula: Cu).

Mol	Chain	Residues	Atoms		ZeroOcc	AltConf
2	A	1	Total 1	Cu 1	0	0
2	B	1	Total 1	Cu 1	0	0

- Molecule 3 is (4S)-2-METHYL-2,4-PENTANEDIOL (three-letter code: MPD) (formula: C₆H₁₄O₂).



Mol	Chain	Residues	Atoms			ZeroOcc	AltConf
3	A	1	Total	C	O	0	0
			8	6	2		
3	A	1	Total	C	O	0	0
			8	6	2		
3	A	1	Total	C	O	0	0
			8	6	2		
3	A	1	Total	C	O	0	0
			8	6	2		
3	B	1	Total	C	O	0	0
			8	6	2		
3	B	1	Total	C	O	0	0
			8	6	2		
3	B	1	Total	C	O	0	0
			8	6	2		

- Molecule 4 is water.


Mol	Chain	Residues	Atoms		ZeroOcc	AltConf
4	A	75	Total	O	0	0
			75	75		
4	B	65	Total	O	0	0
			65	65		

3 Residue-property plots [i](#)

These plots are drawn for all protein, RNA, DNA and oligosaccharide chains in the entry. The first graphic for a chain summarises the proportions of the various outlier classes displayed in the second graphic. The second graphic shows the sequence view annotated by issues in geometry. Residues are color-coded according to the number of geometric quality criteria for which they contain at least one outlier: green = 0, yellow = 1, orange = 2 and red = 3 or more. Stretches of 2 or more consecutive residues without any outlier are shown as a green connector. Residues present in the sample, but not in the model, are shown in grey.


Note EDS was not executed.

- Molecule 1: THIOREDOXIN

Chain A:  84% 15%



- Molecule 1: THIOREDOXIN

Chain B:  81% 16%



4 Data and refinement statistics

Xtriage (Phenix) and EDS were not executed - this section is therefore incomplete.

Property	Value	Source
Space group	C 1 2 1	Depositor
Cell constants a, b, c, α , β , γ	89.50Å 51.06Å 60.45Å 90.00° 113.50° 90.00°	Depositor
Resolution (Å)	8.00 – 1.68	Depositor
% Data completeness (in resolution range)	(Not available) (8.00-1.68)	Depositor
R_{merge}	(Not available)	Depositor
R_{sym}	(Not available)	Depositor
Refinement program	PROFFT	Depositor
R, R_{free}	0.165 , (Not available)	Depositor
Estimated twinning fraction	No twinning to report.	Xtriage
Total number of atoms	1886	wwPDB-VP
Average B, all atoms (Å ²)	22.0	wwPDB-VP

5 Model quality i

5.1 Standard geometry i

Bond lengths and bond angles in the following residue types are not validated in this section: MPD, CU

The Z score for a bond length (or angle) is the number of standard deviations the observed value is removed from the expected value. A bond length (or angle) with $|Z| > 5$ is considered an outlier worth inspection. RMSZ is the root-mean-square of all Z scores of the bond lengths (or angles).

Mol	Chain	Bond lengths		Bond angles	
		RMSZ	# Z >5	RMSZ	# Z >5
1	A	0.92	0/905	1.51	11/1227 (0.9%)
1	B	0.93	0/872	1.53	9/1182 (0.8%)
All	All	0.92	0/1777	1.52	20/2409 (0.8%)

There are no bond length outliers.

All (20) bond angle outliers are listed below:

Mol	Chain	Res	Type	Atoms	Z	Observed(°)	Ideal(°)
1	A	73	ARG	NE-CZ-NH1	12.96	126.78	120.30
1	B	12	PHE	CB-CA-C	7.77	125.94	110.40
1	B	20	ASP	CB-CG-OD1	7.51	125.06	118.30
1	A	101	GLU	OE1-CD-OE2	7.31	132.08	123.30
1	A	73	ARG	NE-CZ-NH2	-7.22	116.69	120.30
1	A	85	GLU	OE1-CD-OE2	7.22	131.96	123.30
1	A	70	TYR	CB-CG-CD2	-6.66	117.00	121.00
1	B	85	GLU	CA-CB-CG	6.17	126.99	113.40
1	A	13	ASP	CB-CG-OD1	6.15	123.84	118.30
1	A	104	ASP	CB-CG-OD2	-5.95	112.95	118.30
1	A	61	ASP	CB-CG-OD2	-5.80	113.08	118.30
1	A	85	GLU	CG-CD-OE2	-5.73	106.84	118.30
1	A	104	ASP	CB-CG-OD1	5.70	123.43	118.30
1	B	10	ASP	CB-CG-OD2	5.65	123.39	118.30
1	B	12	PHE	CA-C-N	-5.29	105.56	117.20
1	B	107	LEU	O-C-N	5.27	131.14	122.70
1	A	61	ASP	CB-CG-OD1	5.16	122.94	118.30
1	B	48	GLU	CG-CD-OE1	-5.15	108.00	118.30
1	B	15	ASP	CB-CG-OD1	5.10	122.89	118.30
1	B	70	TYR	CB-CG-CD1	5.04	124.03	121.00

There are no chirality outliers.

There are no planarity outliers.

5.2 Too-close contacts

In the following table, the Non-H and H(model) columns list the number of non-hydrogen atoms and hydrogen atoms in the chain respectively. The H(added) column lists the number of hydrogen atoms added and optimized by MolProbity. The Clashes column lists the number of clashes within the asymmetric unit, whereas Symm-Clashes lists symmetry-related clashes.

Mol	Chain	Non-H	H(model)	H(added)	Clashes	Symm-Clashes
1	A	849	0	836	8	0
1	B	839	0	842	11	0
2	A	1	0	0	0	0
2	B	1	0	0	0	0
3	A	32	0	56	4	0
3	B	24	0	42	3	0
4	A	75	0	0	0	0
4	B	65	0	0	1	0
All	All	1886	0	1776	19	0

The all-atom clashscore is defined as the number of clashes found per 1000 atoms (including hydrogen atoms). The all-atom clashscore for this structure is 5.

All (19) close contacts within the same asymmetric unit are listed below, sorted by their clash magnitude.

Atom-1	Atom-2	Interatomic distance (Å)	Clash overlap (Å)
1:A:67:ALA:HB3	1:A:68:PRO:HD3	1.78	0.63
1:A:23[B]:ILE:HG12	1:A:54:THR:HB	1.84	0.59
1:B:6[A]:HIS:HD2	4:B:433:HOH:O	1.84	0.59
1:A:80[B]:LEU:HD23	1:A:87:ALA:HB3	1.86	0.57
1:B:60:ILE:HD13	3:B:604:MPD:H53	1.91	0.53
1:B:67:ALA:HB3	1:B:68:PRO:HD3	1.92	0.51
1:B:18:LYS:HA	1:B:18:LYS:NZ	2.27	0.50
1:A:37:MET:CE	3:A:605:MPD:H32	2.42	0.50
1:B:45:ILE:HG13	1:B:99:LEU:HD23	1.95	0.49
1:B:33:GLY:HA2	3:B:602:MPD:H53	1.93	0.48
1:B:31:TRP:O	3:B:602:MPD:H12	2.15	0.47
1:B:14:THR:O	1:B:18:LYS:HB2	2.14	0.47
1:B:12:PHE:O	1:B:13:ASP:HB2	2.14	0.47
1:A:37:MET:HE3	3:A:605:MPD:H32	1.99	0.45
1:A:75:ILE:HG12	3:A:607:MPD:C1	2.47	0.44
1:B:39:ALA:N	1:B:40:PRO:HD2	2.33	0.43

Continued on next page...

Continued from previous page...

Atom-1	Atom-2	Interatomic distance (Å)	Clash overlap (Å)
1:A:67:ALA:N	1:A:68:PRO:CD	2.81	0.42
1:B:67:ALA:N	1:B:68:PRO:CD	2.84	0.41
1:A:72:ILE:O	3:A:607:MPD:H53	2.21	0.41

There are no symmetry-related clashes.

5.3 Torsion angles [i](#)

5.3.1 Protein backbone [i](#)

In the following table, the Percentiles column shows the percent Ramachandran outliers of the chain as a percentile score with respect to all X-ray entries followed by that with respect to entries of similar resolution.

The Analysed column shows the number of residues for which the backbone conformation was analysed, and the total number of residues.

Mol	Chain	Analysed	Favoured	Allowed	Outliers	Percentiles
1	A	114/108 (106%)	114 (100%)	0	0	100 100
1	B	110/108 (102%)	106 (96%)	2 (2%)	2 (2%)	8 1
All	All	224/216 (104%)	220 (98%)	2 (1%)	2 (1%)	17 4

All (2) Ramachandran outliers are listed below:

Mol	Chain	Res	Type
1	B	13	ASP
1	B	14	THR

5.3.2 Protein sidechains [i](#)

In the following table, the Percentiles column shows the percent sidechain outliers of the chain as a percentile score with respect to all X-ray entries followed by that with respect to entries of similar resolution.

The Analysed column shows the number of residues for which the sidechain conformation was analysed, and the total number of residues.

Mol	Chain	Analysed	Rotameric	Outliers	Percentiles
1	A	95/87 (109%)	93 (98%)	2 (2%)	53 33

Continued on next page...

Continued from previous page...

Mol	Chain	Analysed	Rotameric	Outliers	Percentiles	
1	B	91/87 (105%)	90 (99%)	1 (1%)	73	61
All	All	186/174 (107%)	183 (98%)	3 (2%)	60	46

All (3) residues with a non-rotameric sidechain are listed below:

Mol	Chain	Res	Type
1	A	30	GLU
1	A	73	ARG
1	B	18	LYS

Sometimes sidechains can be flipped to improve hydrogen bonding and reduce clashes. All (2) such sidechains are listed below:

Mol	Chain	Res	Type
1	B	62	GLN
1	B	83	ASN

5.3.3 RNA [i](#)

There are no RNA molecules in this entry.

5.4 Non-standard residues in protein, DNA, RNA chains [i](#)

There are no non-standard protein/DNA/RNA residues in this entry.

5.5 Carbohydrates [i](#)

There are no monosaccharides in this entry.

5.6 Ligand geometry [i](#)

Of 9 ligands modelled in this entry, 2 are monoatomic - leaving 7 for Mogul analysis.

In the following table, the Counts columns list the number of bonds (or angles) for which Mogul statistics could be retrieved, the number of bonds (or angles) that are observed in the model and the number of bonds (or angles) that are defined in the Chemical Component Dictionary. The Link column lists molecule types, if any, to which the group is linked. The Z score for a bond length (or angle) is the number of standard deviations the observed value is removed from the

expected value. A bond length (or angle) with $|Z| > 2$ is considered an outlier worth inspection. RMSZ is the root-mean-square of all Z scores of the bond lengths (or angles).

Mol	Type	Chain	Res	Link	Bond lengths			Bond angles		
					Counts	RMSZ	# Z > 2	Counts	RMSZ	# Z > 2
3	MPD	A	606	-	7,7,7	0.38	0	9,10,10	0.51	0
3	MPD	A	601	-	7,7,7	0.64	0	9,10,10	0.79	0
3	MPD	B	604	-	7,7,7	0.52	0	9,10,10	0.62	0
3	MPD	B	603	-	7,7,7	0.63	0	9,10,10	1.01	1 (11%)
3	MPD	A	607	-	7,7,7	0.59	0	9,10,10	0.78	0
3	MPD	B	602	-	7,7,7	0.70	0	9,10,10	0.70	0
3	MPD	A	605	-	7,7,7	0.53	0	9,10,10	0.67	0

In the following table, the Chirals column lists the number of chiral outliers, the number of chiral centers analysed, the number of these observed in the model and the number defined in the Chemical Component Dictionary. Similar counts are reported in the Torsion and Rings columns. '-' means no outliers of that kind were identified.

Mol	Type	Chain	Res	Link	Chirals	Torsions	Rings
3	MPD	A	606	-	-	0/5/5/5	-
3	MPD	A	601	-	-	0/5/5/5	-
3	MPD	B	604	-	-	2/5/5/5	-
3	MPD	B	603	-	-	2/5/5/5	-
3	MPD	A	607	-	-	2/5/5/5	-
3	MPD	B	602	-	-	3/5/5/5	-
3	MPD	A	605	-	-	1/5/5/5	-

There are no bond length outliers.

All (1) bond angle outliers are listed below:

Mol	Chain	Res	Type	Atoms	Z	Observed(°)	Ideal(°)
3	B	603	MPD	CM-C2-C1	-2.43	105.18	110.63

There are no chirality outliers.

All (10) torsion outliers are listed below:

Mol	Chain	Res	Type	Atoms
3	A	607	MPD	C2-C3-C4-O4
3	A	607	MPD	C2-C3-C4-C5
3	B	602	MPD	CM-C2-C3-C4
3	B	603	MPD	C2-C3-C4-O4
3	B	603	MPD	C2-C3-C4-C5
3	B	602	MPD	C1-C2-C3-C4
3	B	602	MPD	C2-C3-C4-C5
3	A	605	MPD	O2-C2-C3-C4

Continued on next page...

Continued from previous page...

Mol	Chain	Res	Type	Atoms
3	B	604	MPD	O2-C2-C3-C4
3	B	604	MPD	C2-C3-C4-O4

There are no ring outliers.

4 monomers are involved in 7 short contacts:

Mol	Chain	Res	Type	Clashes	Symm-Clashes
3	B	604	MPD	1	0
3	A	607	MPD	2	0
3	B	602	MPD	2	0
3	A	605	MPD	2	0

5.7 Other polymers [i](#)

There are no such residues in this entry.

5.8 Polymer linkage issues [i](#)

There are no chain breaks in this entry.

6 Fit of model and data

6.1 Protein, DNA and RNA chains

EDS was not executed - this section is therefore empty.

6.2 Non-standard residues in protein, DNA, RNA chains

EDS was not executed - this section is therefore empty.

6.3 Carbohydrates

EDS was not executed - this section is therefore empty.

6.4 Ligands

EDS was not executed - this section is therefore empty.

6.5 Other polymers

EDS was not executed - this section is therefore empty.