



Full wwPDB EM Validation Report ⓘ

Nov 20, 2022 – 02:43 AM EST

PDB ID : 7TT1
EMDB ID : EMD-26107
Title : BamABCDE bound to substrate EspP class 4
Authors : Doyle, M.T.; Jimah, J.R.; Dowdy, T.; Ohlemacher, S.I.; Larion, M.; Hinshaw, J.E.; Bernstein, H.D.
Deposited on : 2022-01-31
Resolution : 4.30 Å(reported)

This is a Full wwPDB EM Validation Report for a publicly released PDB entry.

We welcome your comments at validation@mail.wwpdb.org

A user guide is available at

<https://www.wwpdb.org/validation/2017/EMValidationReportHelp>

with specific help available everywhere you see the ⓘ symbol.

The types of validation reports are described at

<http://www.wwpdb.org/validation/2017/FAQs#types>.

The following versions of software and data (see [references ⓘ](#)) were used in the production of this report:

EMDB validation analysis : 0.0.1.dev43
MolProbity : 4.02b-467
Percentile statistics : 20191225.v01 (using entries in the PDB archive December 25th 2019)
MapQ : 1.9.9
Ideal geometry (proteins) : Engh & Huber (2001)
Ideal geometry (DNA, RNA) : Parkinson et al. (1996)
Validation Pipeline (wwPDB-VP) : 2.31.3

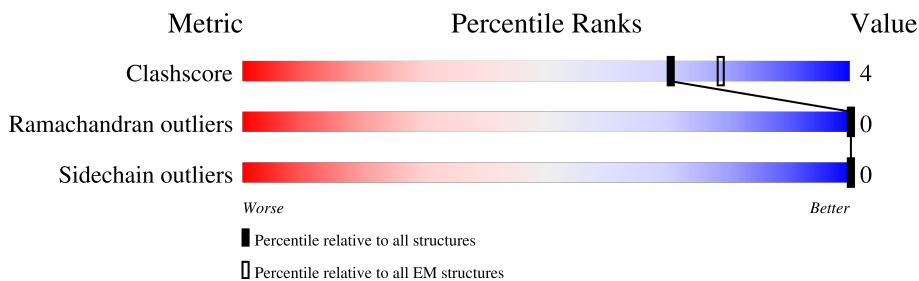
1 Overall quality at a glance

The following experimental techniques were used to determine the structure:

ELECTRON MICROSCOPY

The reported resolution of this entry is 4.30 Å.

Percentile scores (ranging between 0-100) for global validation metrics of the entry are shown in the following graphic. The table shows the number of entries on which the scores are based.



Metric	Whole archive (#Entries)	EM structures (#Entries)
Clashscore	158937	4297
Ramachandran outliers	154571	4023
Sidechain outliers	154315	3826

The table below summarises the geometric issues observed across the polymeric chains and their fit to the map. The red, orange, yellow and green segments of the bar indicate the fraction of residues that contain outliers for ≥ 3 , 2, 1 and 0 types of geometric quality criteria respectively. A grey segment represents the fraction of residues that are not modelled. The numeric value for each fraction is indicated below the corresponding segment, with a dot representing fractions $\leq 5\%$. The upper red bar (where present) indicates the fraction of residues that have poor fit to the EM map (all-atom inclusion $< 40\%$). The numeric value is given above the bar.

Mol	Chain	Length	Quality of chain
1	P	764	
2	A	800	
3	B	373	
4	E	94	
5	D	226	
6	C	320	

2 Entry composition [i](#)

There are 6 unique types of molecules in this entry. The entry contains 20398 atoms, of which 10005 are hydrogens and 0 are deuteriums.

In the tables below, the AltConf column contains the number of residues with at least one atom in alternate conformation and the Trace column contains the number of residues modelled with at most 2 atoms.

- Molecule 1 is a protein called Maltose/maltodextrin-binding periplasmic protein,Serine protease EspP chimera.

Mol	Chain	Residues	Atoms					AltConf	Trace	
			Total	C	H	N	O			S
1	P	18	287	96	136	27	27	1	0	0

There are 46 discrepancies between the modelled and reference sequences:

Chain	Residue	Modelled	Actual	Comment	Reference
P	537	ALA	-	expression tag	UNP P0AEX9
P	538	TRP	-	expression tag	UNP P0AEX9
P	539	SER	-	expression tag	UNP P0AEX9
P	540	HIS	-	expression tag	UNP P0AEX9
P	541	PRO	-	expression tag	UNP P0AEX9
P	542	GLN	-	expression tag	UNP P0AEX9
P	543	PHE	-	expression tag	UNP P0AEX9
P	544	GLU	-	expression tag	UNP P0AEX9
P	545	LYS	-	expression tag	UNP P0AEX9
P	546	GLY	-	expression tag	UNP P0AEX9
P	547	GLY	-	expression tag	UNP P0AEX9
P	548	GLY	-	expression tag	UNP P0AEX9
P	549	SER	-	expression tag	UNP P0AEX9
P	550	GLY	-	expression tag	UNP P0AEX9
P	551	GLY	-	expression tag	UNP P0AEX9
P	552	GLY	-	expression tag	UNP P0AEX9
P	553	SER	-	expression tag	UNP P0AEX9
P	554	GLY	-	expression tag	UNP P0AEX9
P	555	GLY	-	expression tag	UNP P0AEX9
P	556	SER	-	expression tag	UNP P0AEX9
P	557	ALA	-	expression tag	UNP P0AEX9
P	558	TRP	-	expression tag	UNP P0AEX9
P	559	SER	-	expression tag	UNP P0AEX9
P	560	HIS	-	expression tag	UNP P0AEX9
P	561	PRO	-	expression tag	UNP P0AEX9
P	562	GLN	-	expression tag	UNP P0AEX9
P	563	PHE	-	expression tag	UNP P0AEX9

Continued on next page...

Continued from previous page...

Chain	Residue	Modelled	Actual	Comment	Reference
P	564	GLU	-	expression tag	UNP P0AEX9
P	565	LYS	-	expression tag	UNP P0AEX9
P	566	GLY	-	expression tag	UNP P0AEX9
P	567	GLY	-	expression tag	UNP P0AEX9
P	935	ASN	-	linker	UNP P0AEX9
P	936	SER	-	linker	UNP P0AEX9
P	937	GLY	-	linker	UNP P0AEX9
P	938	SER	-	linker	UNP P0AEX9
P	976	GLY	-	insertion	UNP Q7BSW5
P	977	GLU	-	insertion	UNP Q7BSW5
P	978	ASN	-	insertion	UNP Q7BSW5
P	979	LEU	-	insertion	UNP Q7BSW5
P	980	TYR	-	insertion	UNP Q7BSW5
P	981	PHE	-	insertion	UNP Q7BSW5
P	982	GLN	-	insertion	UNP Q7BSW5
P	983	GLY	-	insertion	UNP Q7BSW5
P	984	GLY	-	insertion	UNP Q7BSW5
P	1299	CYS	-	expression tag	UNP Q7BSW5
P	1300	PHE	-	expression tag	UNP Q7BSW5

- Molecule 2 is a protein called Outer membrane protein assembly factor BamA.

Mol	Chain	Residues	Atoms					AltConf	Trace	
			Total	C	H	N	O			S
2	A	612	9476	3079	4605	818	959	15	0	0

There are 12 discrepancies between the modelled and reference sequences:

Chain	Residue	Modelled	Actual	Comment	Reference
A	11	ALA	-	expression tag	UNP C3TPJ2
A	12	HIS	-	expression tag	UNP C3TPJ2
A	13	HIS	-	expression tag	UNP C3TPJ2
A	14	HIS	-	expression tag	UNP C3TPJ2
A	15	HIS	-	expression tag	UNP C3TPJ2
A	16	HIS	-	expression tag	UNP C3TPJ2
A	17	HIS	-	expression tag	UNP C3TPJ2
A	18	HIS	-	expression tag	UNP C3TPJ2
A	19	HIS	-	expression tag	UNP C3TPJ2
A	20	GLY	-	expression tag	UNP C3TPJ2
A	21	GLY	-	expression tag	UNP C3TPJ2
A	425	CYS	SER	conflict	UNP C3TPJ2

- Molecule 3 is a protein called Outer membrane protein assembly factor BamB.

Mol	Chain	Residues	Atoms					AltConf	Trace	
			Total	C	H	N	O			S
3	B	349	5187	1640	2576	449	516	6	0	0

- Molecule 4 is a protein called Outer membrane protein assembly factor BamE.

Mol	Chain	Residues	Atoms					AltConf	Trace	
			Total	C	H	N	O			S
4	E	89	1382	441	683	121	135	2	0	0

- Molecule 5 is a protein called Outer membrane protein assembly factor BamD.

Mol	Chain	Residues	Atoms					AltConf	Trace	
			Total	C	H	N	O			S
5	D	213	3390	1086	1668	303	326	7	0	0

- Molecule 6 is a protein called Outer membrane protein assembly factor BamC.

Mol	Chain	Residues	Atoms					AltConf	Trace	
			Total	C	H	N	O			S
6	C	48	676	216	337	55	67	1	0	0

CYS	GLN	LEU	LEU	ALA
SER	VAL	ASN	PRO	SER
ASP	VAL	LEU	MET	GLY
SER	SER	LEU	ASP	TYR
ARG	VAL	VAL	VAL	LYS
TYR	LEU	ALA	ARG	LEU
LYS	GLN	GLY	GLY	GLN
ARG	ALA	PRO	PRO	VAL
GLN	LYS	VAL	PHE	GLY
VAL	ASN	ALA	ASN	ASP
SER	TYR	VAL	VAL	LEU
GLY	THR	ALA	TRP	ASN
D38	THR	ALA	GLN	ARG
E39	GLN	SER	GLN	ARG
A52	ARG	MET	ARG	SER
M56	ASP	GLN	LEU	SER
I57	ASP	ARG	PRO	LEU
L58	ALA	TYR	ALA	GLN
T70	GLY	SER	ALA	ILE
N71	GLN	THR	LEU	GLU
G72	LEU	MET	LYS	ASP
P85	THR	ASN	GLY	THR
ALA	ASP	VAL	MET	ASP
GLN	TRP	ILE	LYS	THR
PRO	VAL	SER	VAL	LEU
LEU	GLN	ALA	THR	GLN
ALA	TRP	GLY	ASP	THR
LEU	ASN	LEU	SER	GLN
ALA	ARG	ASP	THR	LEU
LEU	ALA	LYS	ARG	ASN
VAL	VAL	SER	ALA	ASP
SER	SER	ALA	GLN	LEU
GLY	ASP	GLY	THR	GLY
ALA	THR	ASN	ALA	ASN
ALA	GLU	ASP	ALA	ARG
VAL	GLN	ASP	ALA	THR
ALA	TYR	ALA	ALA	ALA
PHE	GLN	LYS	TYR	GLN
SER	TYR	ASN	ASN	TYR
LYS	ILE	ARG	ALA	ILE
		ALA	SER	VAL
		THR	THR	LYS
		ASP	ASP	PRO
		TRP	ASP	PRO
		GLN	TRP	GLN
		GLU	GLN	GLY
		LEU	LEU	GLN
		GLY	GLY	ARG
		ALA	ALA	GLY
		SER	SER	ASN
		ASP	ASP	THR
		PRO	PRO	LEU
		GLY	GLY	VAL
		LEU	LEU	GLU

4 Experimental information

Property	Value	Source
EM reconstruction method	SINGLE PARTICLE	Depositor
Imposed symmetry	POINT, Not provided	
Number of particles used	148165	Depositor
Resolution determination method	FSC 0.143 CUT-OFF	Depositor
CTF correction method	NONE	Depositor
Microscope	FEI TITAN KRIOS	Depositor
Voltage (kV)	300	Depositor
Electron dose ($e^-/\text{\AA}^2$)	60, 60	Depositor
Minimum defocus (nm)	600	Depositor
Maximum defocus (nm)	1800	Depositor
Magnification	Not provided	
Image detector	GATAN K2 SUMMIT (4k x 4k), GATAN K3 (6k x 4k)	Depositor
Maximum map value	2.734	Depositor
Minimum map value	-2.135	Depositor
Average map value	0.007	Depositor
Map value standard deviation	0.056	Depositor
Recommended contour level	0.113	Depositor
Map size (Å)	257.7168, 257.7168, 257.7168	wwPDB
Map dimensions	240, 240, 240	wwPDB
Map angles (°)	90.0, 90.0, 90.0	wwPDB
Pixel spacing (Å)	1.07382, 1.07382, 1.07382	Depositor

5 Model quality [i](#)

5.1 Standard geometry [i](#)

The Z score for a bond length (or angle) is the number of standard deviations the observed value is removed from the expected value. A bond length (or angle) with $|Z| > 5$ is considered an outlier worth inspection. RMSZ is the root-mean-square of all Z scores of the bond lengths (or angles).

Mol	Chain	Bond lengths		Bond angles	
		RMSZ	# Z >5	RMSZ	# Z >5
1	P	0.28	0/153	0.46	0/202
2	A	0.30	0/4990	0.53	0/6760
3	B	0.26	0/2656	0.54	0/3620
4	E	0.29	0/714	0.50	0/974
5	D	0.31	0/1761	0.51	0/2390
6	C	0.26	0/347	0.48	0/477
All	All	0.29	0/10621	0.53	0/14423

There are no bond length outliers.

There are no bond angle outliers.

There are no chirality outliers.

There are no planarity outliers.

5.2 Too-close contacts [i](#)

In the following table, the Non-H and H(model) columns list the number of non-hydrogen atoms and hydrogen atoms in the chain respectively. The H(added) column lists the number of hydrogen atoms added and optimized by MolProbity. The Clashes column lists the number of clashes within the asymmetric unit, whereas Symm-Clashes lists symmetry-related clashes.

Mol	Chain	Non-H	H(model)	H(added)	Clashes	Symm-Clashes
1	P	151	136	134	0	0
2	A	4871	4605	4600	38	0
3	B	2611	2576	2574	27	0
4	E	699	683	682	4	0
5	D	1722	1668	1668	9	0
6	C	339	337	336	4	0
All	All	10393	10005	9994	74	0

The all-atom clashscore is defined as the number of clashes found per 1000 atoms (including hydrogen atoms). The all-atom clashscore for this structure is 4.

All (74) close contacts within the same asymmetric unit are listed below, sorted by their clash magnitude.

Atom-1	Atom-2	Interatomic distance (Å)	Clash overlap (Å)
3:B:263:TYR:O	3:B:301:GLN:NE2	2.04	0.90
2:A:699:LEU:O	2:A:757:TYR:OH	1.97	0.82
2:A:624:ASP:OD2	2:A:626:LYS:NZ	2.18	0.76
2:A:569:ASP:OD2	2:A:606:ASN:ND2	2.18	0.76
3:B:319:GLN:NE2	3:B:354:GLY:O	2.23	0.71
3:B:271:ASP:OD1	3:B:272:LEU:N	2.25	0.70
4:E:105:ASP:OD2	4:E:107:LYS:NZ	2.25	0.69
6:C:38:ASP:OD1	6:C:39:GLU:N	2.32	0.62
2:A:765:ASN:O	2:A:767:ARG:NH1	2.34	0.60
3:B:198:SER:N	3:B:245:SER:O	2.38	0.56
3:B:54:SER:N	3:B:76:ASP:OD1	2.38	0.56
4:E:44:SER:O	4:E:47:ARG:NH1	2.34	0.56
2:A:391:ARG:NH2	2:A:581:LEU:O	2.40	0.54
6:C:70:THR:HG22	6:C:72:GLY:H	1.74	0.53
2:A:374:GLY:O	4:E:35:GLY:N	2.39	0.53
2:A:314:ARG:NE	2:A:380:ASP:OD2	2.34	0.53
2:A:352:ILE:N	2:A:373:GLU:OE2	2.39	0.53
3:B:129:ALA:O	3:B:146:LYS:HA	2.10	0.51
2:A:248:THR:OG1	2:A:253:GLY:N	2.44	0.51
5:D:70:GLN:N	5:D:70:GLN:OE1	2.44	0.51
2:A:809:THR:O	2:A:810:TRP:HB2	2.10	0.50
2:A:444:VAL:N	2:A:458:ILE:O	2.42	0.50
2:A:361:LYS:NZ	5:D:134:ASP:OD2	2.35	0.50
2:A:569:ASP:OD1	2:A:605:ASP:N	2.32	0.50
2:A:559:SER:O	2:A:678:GLN:N	2.45	0.48
3:B:238:SER:HB2	3:B:243:ARG:HE	1.77	0.48
5:D:175:ALA:HB1	5:D:210:ALA:HB3	1.96	0.48
2:A:628:VAL:O	2:A:719:ILE:N	2.37	0.47
3:B:48:TRP:CE2	3:B:389:SER:HB2	2.49	0.47
2:A:589:ASP:OD1	2:A:590:GLY:N	2.41	0.47
2:A:537:SER:HA	2:A:564:SER:HA	1.96	0.46
2:A:672:ALA:N	2:A:704:ASP:O	2.34	0.46
4:E:56:ALA:O	4:E:60:GLY:N	2.44	0.46
2:A:312:LEU:HB3	2:A:317:TYR:HB2	1.98	0.45
2:A:255:TYR:CD1	3:B:194:LEU:HD22	2.51	0.45
5:D:233:LYS:HB3	6:C:56:MET:HE1	1.97	0.45
3:B:170:GLN:OE1	3:B:172:GLN:NE2	2.47	0.45
2:A:463:ASN:OD1	2:A:466:GLN:N	2.43	0.45
2:A:664:GLN:HB3	2:A:667:THR:HG21	1.99	0.45
3:B:131:VAL:O	3:B:144:GLN:HA	2.17	0.45

Continued on next page...

Continued from previous page...

Atom-1	Atom-2	Interatomic distance (Å)	Clash overlap (Å)
3:B:135:ASN:HB2	3:B:138:ASP:O	2.17	0.44
2:A:264:ASP:OD1	2:A:265:GLN:N	2.44	0.44
3:B:217:SER:HB2	3:B:226:MET:SD	2.57	0.44
2:A:246:SER:HB3	3:B:194:LEU:CA	2.48	0.44
5:D:47:ASN:OD1	5:D:49:ARG:N	2.48	0.44
2:A:247:LEU:H	3:B:193:SER:HA	1.83	0.43
2:A:583:ARG:HB2	2:A:587:PRO:HA	2.00	0.43
2:A:197:PHE:O	2:A:200:ARG:NH1	2.47	0.43
3:B:300:ASP:OD1	3:B:301:GLN:N	2.44	0.43
2:A:593:VAL:HG13	2:A:613:LEU:HD11	2.01	0.43
3:B:113:GLY:O	3:B:154:ARG:HA	2.19	0.43
2:A:770:ALA:HB3	2:A:791:PHE:HE1	1.84	0.43
2:A:190:THR:O	2:A:194:ILE:HG12	2.19	0.42
5:D:49:ARG:O	5:D:52:ILE:HG22	2.19	0.42
2:A:246:SER:HB3	3:B:194:LEU:N	2.35	0.42
3:B:242:ASP:O	3:B:263:TYR:HB3	2.19	0.42
2:A:297:ASN:OD1	2:A:299:THR:HB	2.20	0.42
2:A:362:ASP:HB2	5:D:134:ASP:O	2.20	0.41
5:D:110:TYR:CE2	5:D:114:LEU:HD11	2.55	0.41
6:C:52:ALA:HB2	6:C:58:LEU:HG	2.01	0.41
3:B:154:ARG:HB3	3:B:199:ALA:HB2	2.02	0.41
3:B:165:HIS:HB3	3:B:197:GLU:HB2	2.02	0.41
2:A:586:PHE:CZ	2:A:777:MET:HG2	2.55	0.41
3:B:78:ALA:O	3:B:98:ALA:HB2	2.21	0.41
5:D:134:ASP:OD1	5:D:180:SER:CB	2.68	0.41
2:A:674:TYR:O	2:A:699:LEU:HD12	2.20	0.41
2:A:622:ASP:OD2	2:A:627:TRP:N	2.54	0.41
3:B:48:TRP:CD1	3:B:88:ASP:HA	2.56	0.41
3:B:129:ALA:CB	3:B:149:GLY:H	2.34	0.40
2:A:682:TYR:O	2:A:686:TYR:HB2	2.22	0.40
3:B:85:ASN:N	3:B:90:LYS:O	2.33	0.40
3:B:189:MET:N	3:B:189:MET:SD	2.94	0.40
3:B:263:TYR:HB2	3:B:286:VAL:HG13	2.03	0.40
2:A:718:PHE:O	2:A:736:SER:HA	2.22	0.40

There are no symmetry-related clashes.

5.3 Torsion angles [i](#)

5.3.1 Protein backbone [i](#)

In the following table, the Percentiles column shows the percent Ramachandran outliers of the chain as a percentile score with respect to all PDB entries followed by that with respect to all EM entries.

The Analysed column shows the number of residues for which the backbone conformation was analysed, and the total number of residues.

Mol	Chain	Analysed	Favoured	Allowed	Outliers	Percentiles	
1	P	14/764 (2%)	14 (100%)	0	0	100	100
2	A	602/800 (75%)	597 (99%)	5 (1%)	0	100	100
3	B	343/373 (92%)	337 (98%)	6 (2%)	0	100	100
4	E	87/94 (93%)	84 (97%)	3 (3%)	0	100	100
5	D	211/226 (93%)	208 (99%)	3 (1%)	0	100	100
6	C	46/320 (14%)	46 (100%)	0	0	100	100
All	All	1303/2577 (51%)	1286 (99%)	17 (1%)	0	100	100

There are no Ramachandran outliers to report.

5.3.2 Protein sidechains [i](#)

In the following table, the Percentiles column shows the percent sidechain outliers of the chain as a percentile score with respect to all PDB entries followed by that with respect to all EM entries.

The Analysed column shows the number of residues for which the sidechain conformation was analysed, and the total number of residues.

Mol	Chain	Analysed	Rotameric	Outliers	Percentiles	
1	P	15/604 (2%)	15 (100%)	0	100	100
2	A	521/680 (77%)	521 (100%)	0	100	100
3	B	281/304 (92%)	281 (100%)	0	100	100
4	E	78/82 (95%)	78 (100%)	0	100	100
5	D	178/190 (94%)	178 (100%)	0	100	100
6	C	34/258 (13%)	34 (100%)	0	100	100
All	All	1107/2118 (52%)	1107 (100%)	0	100	100

There are no protein residues with a non-rotameric sidechain to report.

Sometimes sidechains can be flipped to improve hydrogen bonding and reduce clashes. There are no such sidechains identified.

5.3.3 RNA [i](#)

There are no RNA molecules in this entry.

5.4 Non-standard residues in protein, DNA, RNA chains [i](#)

There are no non-standard protein/DNA/RNA residues in this entry.

5.5 Carbohydrates [i](#)

There are no monosaccharides in this entry.

5.6 Ligand geometry [i](#)

There are no ligands in this entry.

5.7 Other polymers [i](#)

There are no such residues in this entry.

5.8 Polymer linkage issues [i](#)

There are no chain breaks in this entry.

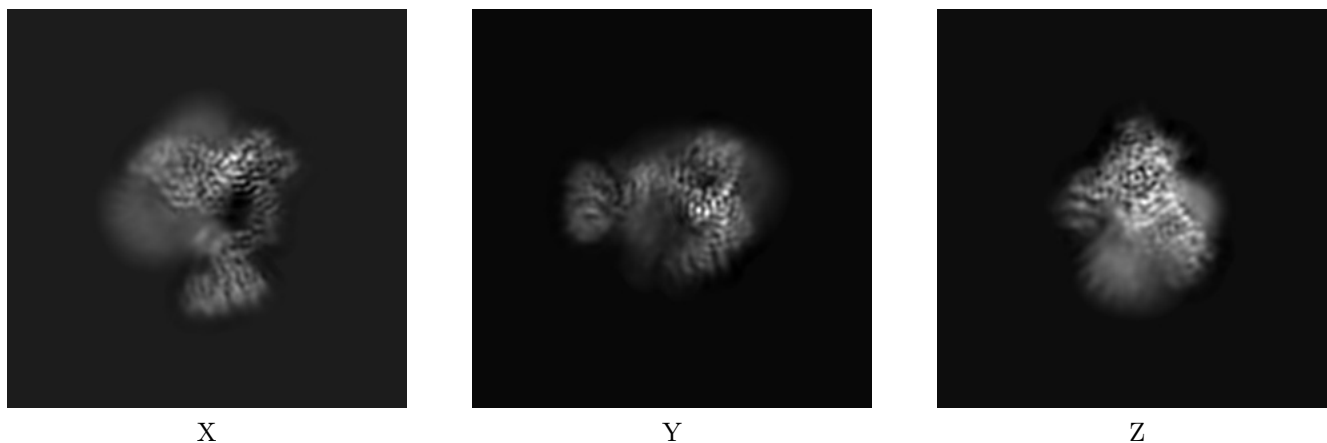
6 Map visualisation [i](#)

This section contains visualisations of the EMDB entry EMD-26107. These allow visual inspection of the internal detail of the map and identification of artifacts.

No raw map or half-maps were deposited for this entry and therefore no images, graphs, etc. pertaining to the raw map can be shown.

6.1 Orthogonal projections [i](#)

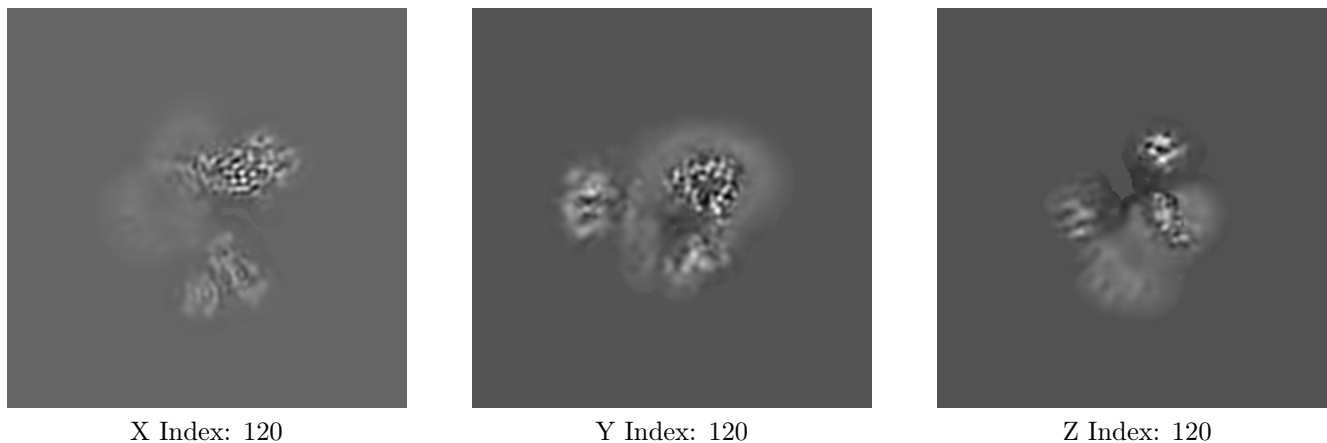
6.1.1 Primary map



The images above show the map projected in three orthogonal directions.

6.2 Central slices [i](#)

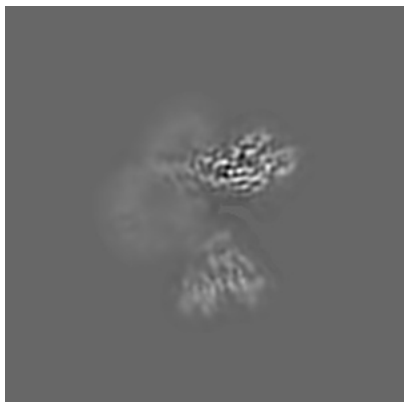
6.2.1 Primary map



The images above show central slices of the map in three orthogonal directions.

6.3 Largest variance slices [i](#)

6.3.1 Primary map



X Index: 118



Y Index: 136

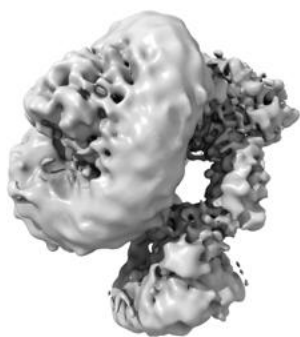


Z Index: 150

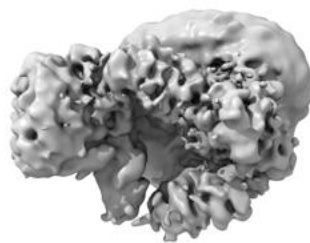
The images above show the largest variance slices of the map in three orthogonal directions.

6.4 Orthogonal surface views [i](#)

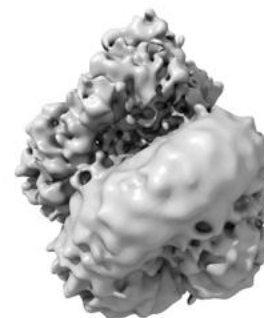
6.4.1 Primary map



X



Y



Z

The images above show the 3D surface view of the map at the recommended contour level 0.113. These images, in conjunction with the slice images, may facilitate assessment of whether an appropriate contour level has been provided.

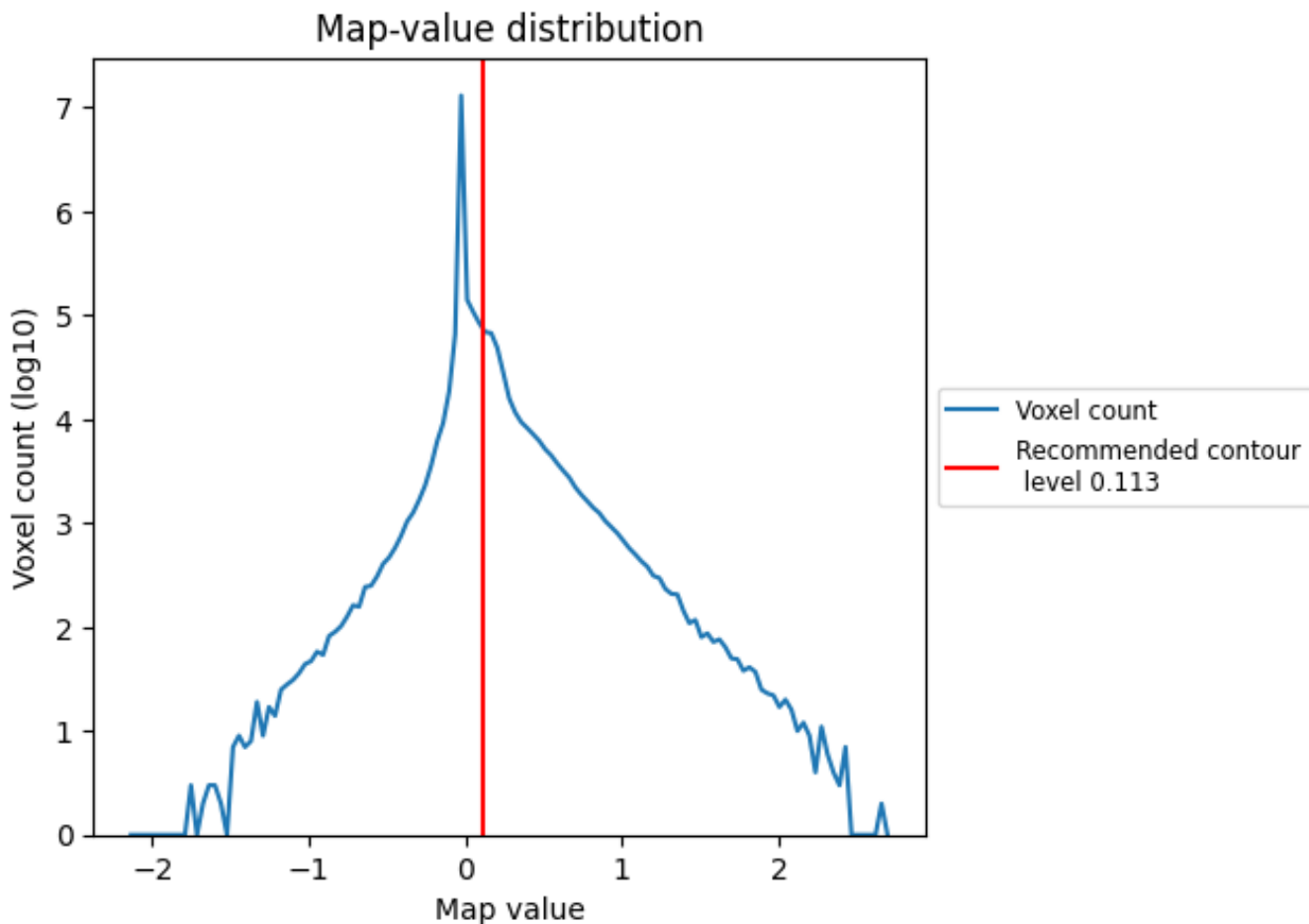
6.5 Mask visualisation

This section was not generated. No masks/segmentation were deposited.

7 Map analysis [i](#)

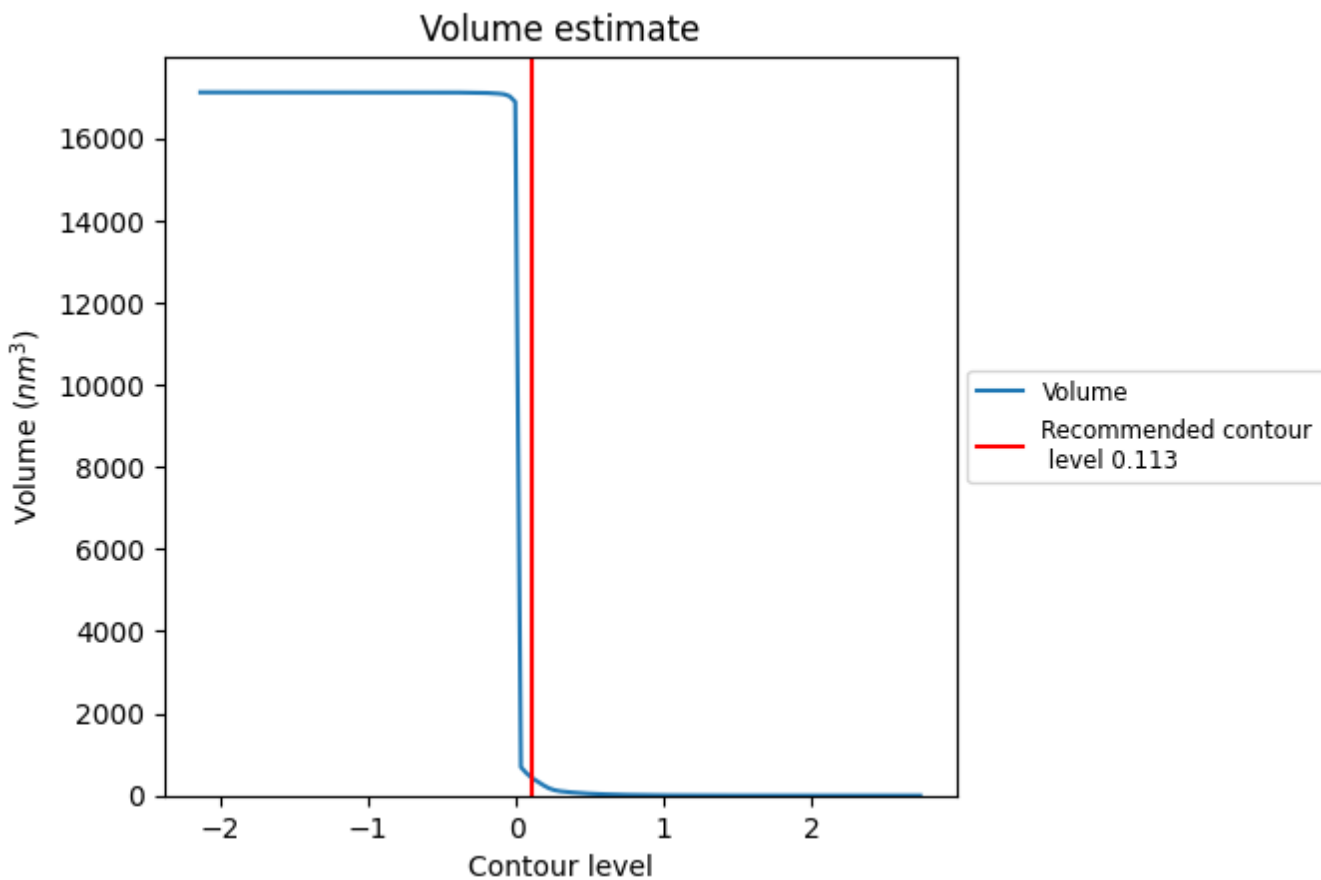
This section contains the results of statistical analysis of the map.

7.1 Map-value distribution [i](#)



The map-value distribution is plotted in 128 intervals along the x-axis. The y-axis is logarithmic. A spike in this graph at zero usually indicates that the volume has been masked.

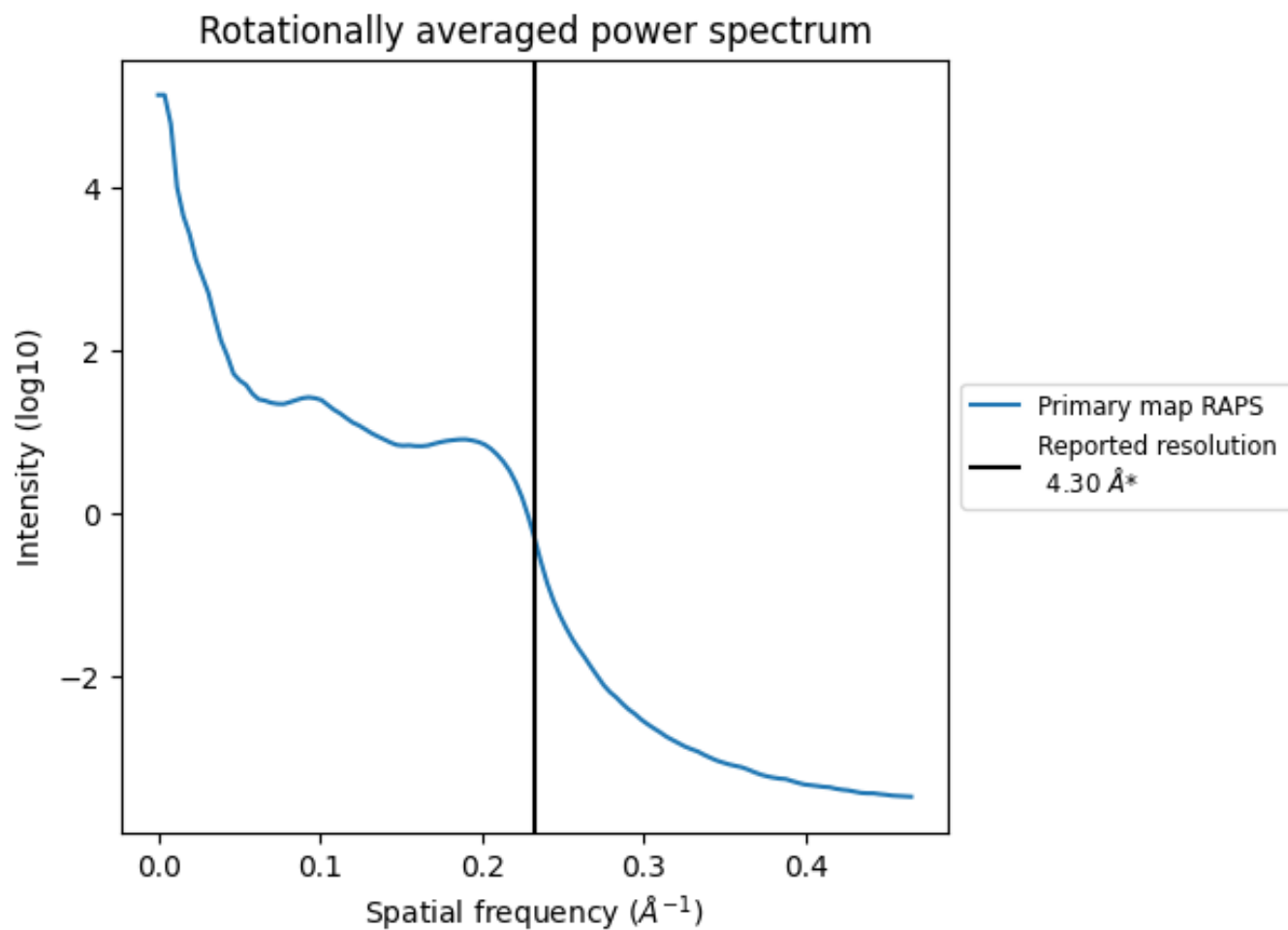
7.2 Volume estimate [i](#)



The volume at the recommended contour level is 416 nm³; this corresponds to an approximate mass of 376 kDa.

The volume estimate graph shows how the enclosed volume varies with the contour level. The recommended contour level is shown as a vertical line and the intersection between the line and the curve gives the volume of the enclosed surface at the given level.

7.3 Rotationally averaged power spectrum [i](#)

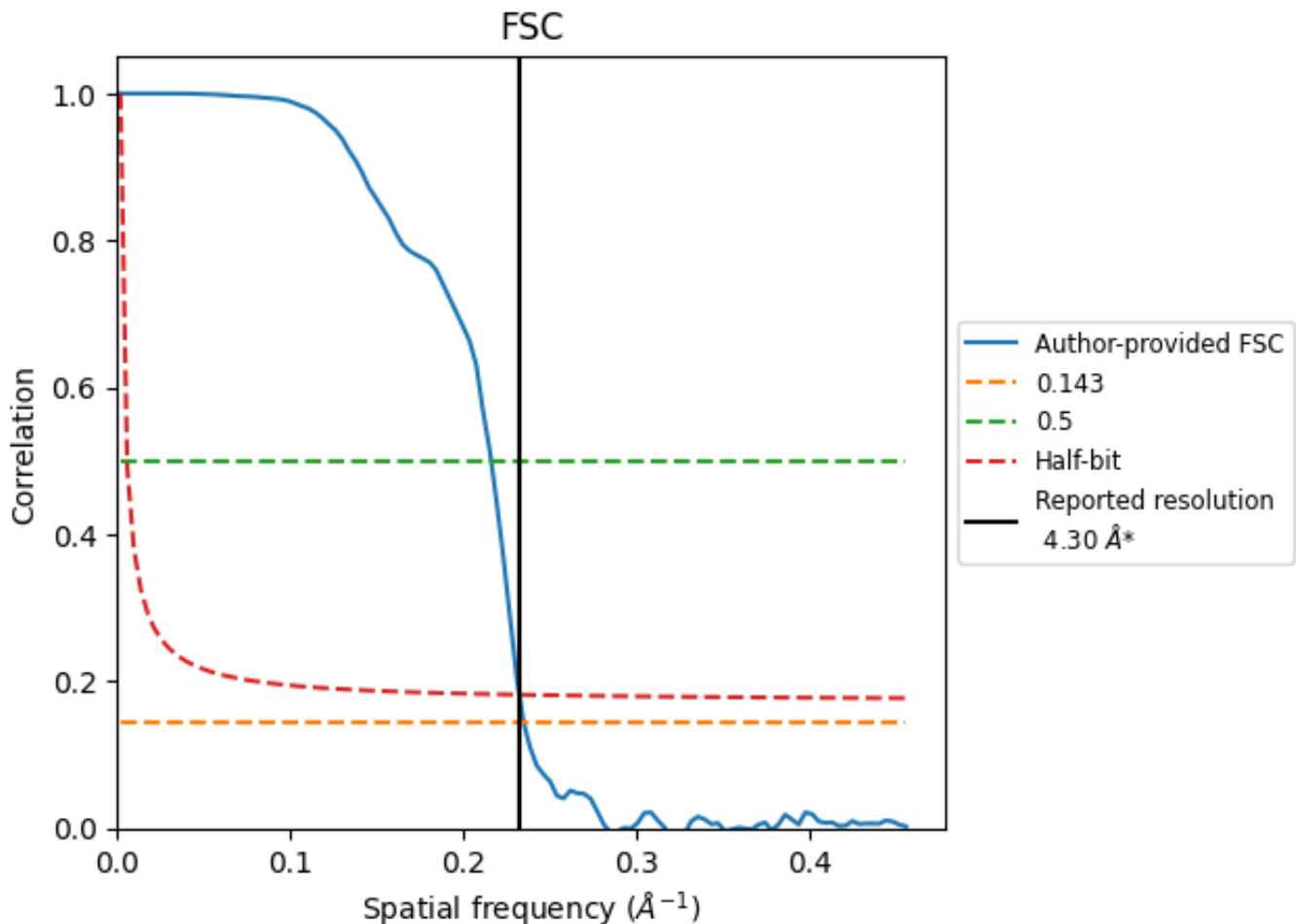


*Reported resolution corresponds to spatial frequency of 0.233\AA^{-1}

8 Fourier-Shell correlation [i](#)

Fourier-Shell Correlation (FSC) is the most commonly used method to estimate the resolution of single-particle and subtomogram-averaged maps. The shape of the curve depends on the imposed symmetry, mask and whether or not the two 3D reconstructions used were processed from a common reference. The reported resolution is shown as a black line. A curve is displayed for the half-bit criterion in addition to lines showing the 0.143 gold standard cut-off and 0.5 cut-off.

8.1 FSC [i](#)



*Reported resolution corresponds to spatial frequency of 0.233 Å⁻¹

8.2 Resolution estimates [i](#)

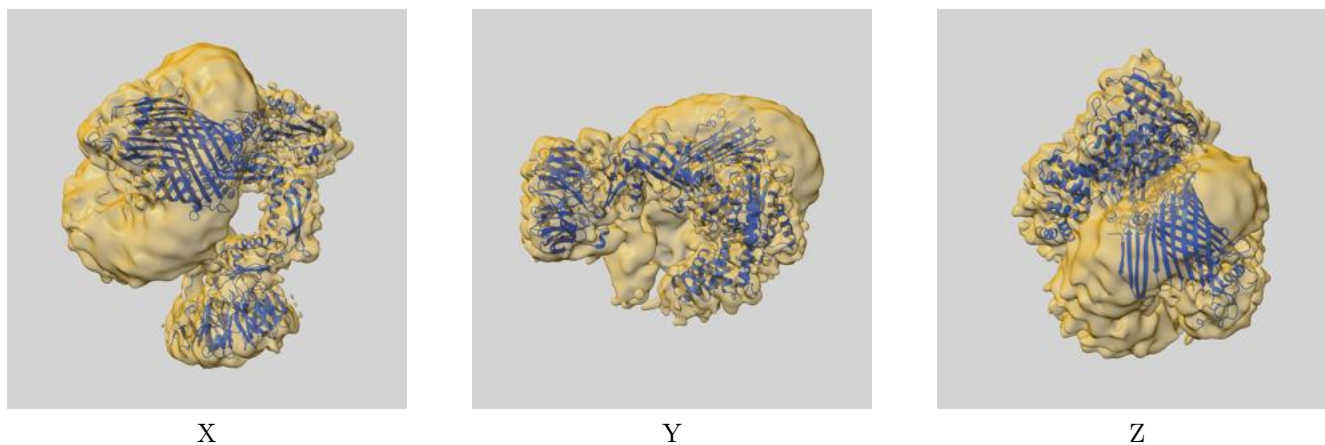
Resolution estimate (Å)	Estimation criterion (FSC cut-off)		
	0.143	0.5	Half-bit
Reported by author	4.30	-	-
Author-provided FSC curve	4.26	4.63	4.30
Unmasked-calculated*	-	-	-

*Resolution estimate based on FSC curve calculated by comparison of deposited half-maps.

9 Map-model fit [i](#)

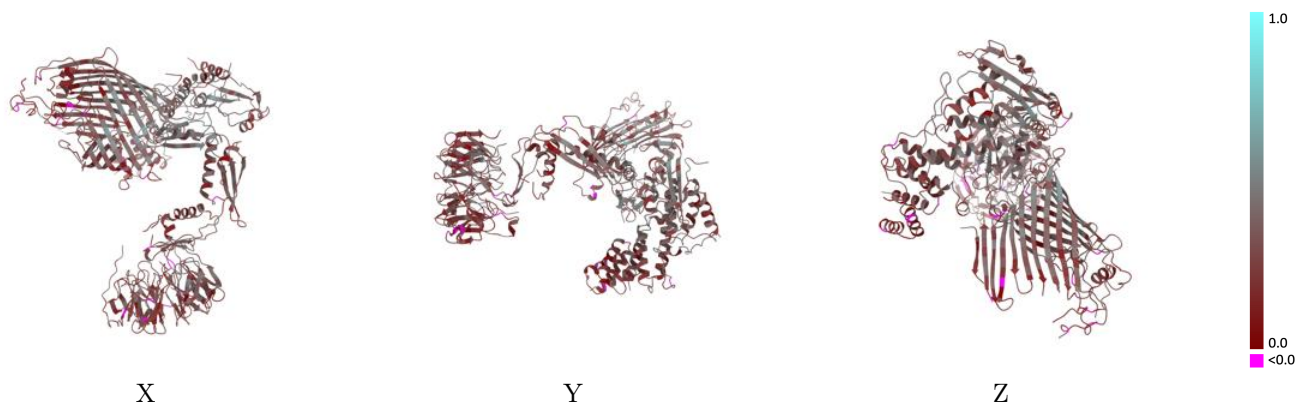
This section contains information regarding the fit between EMDB map EMD-26107 and PDB model 7TT1. Per-residue inclusion information can be found in section 3 on page 6.

9.1 Map-model overlay [i](#)



The images above show the 3D surface view of the map at the recommended contour level 0.113 at 50% transparency in yellow overlaid with a ribbon representation of the model coloured in blue. These images allow for the visual assessment of the quality of fit between the atomic model and the map.

9.2 Q-score mapped to coordinate model [i](#)



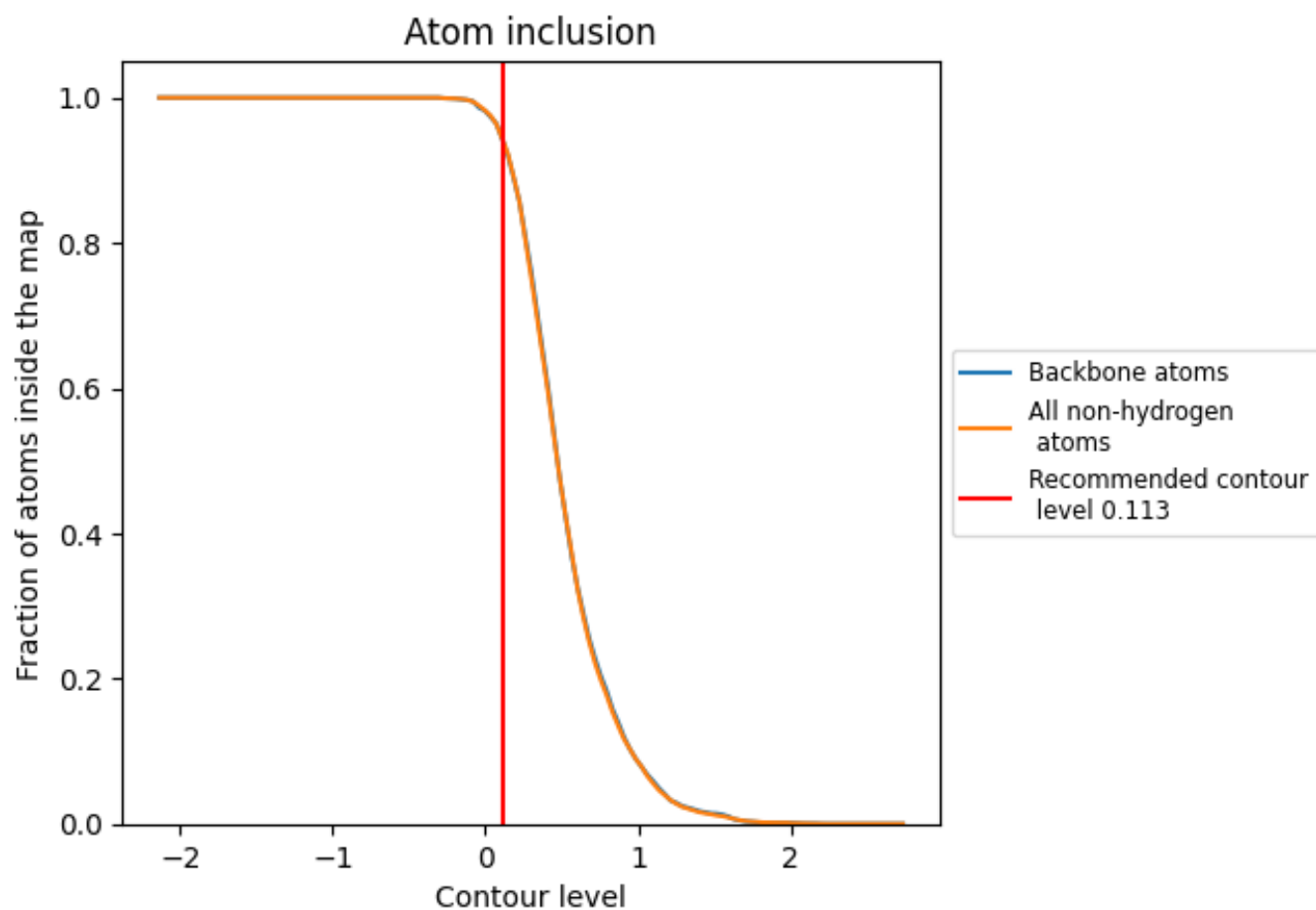
The images above show the model with each residue coloured according to its Q-score. This shows their resolvability in the map with higher Q-score values reflecting better resolvability. Please note: Q-score is calculating the resolvability of atoms, and thus high values are only expected at resolutions at which atoms can be resolved. Low Q-score values may therefore be expected for many entries.

9.3 Atom inclusion mapped to coordinate model [i](#)



The images above show the model with each residue coloured according to its atom inclusion. This shows to what extent they are inside the map at the recommended contour level (0.113).















9.4 Atom inclusion [i](#)



At the recommended contour level, 94% of all backbone atoms, 94% of all non-hydrogen atoms, are inside the map.

9.5 Map-model fit summary

The table lists the average atom inclusion at the recommended contour level (0.113) and Q-score for the entire model and for each chain.

Chain	Atom inclusion	Q-score
All	 0.9416	 0.3070
A	 0.9402	 0.3260
B	 0.9494	 0.2650
C	 0.9552	 0.3530
D	 0.9276	 0.2840
E	 0.9767	 0.3770
P	 0.9726	 0.2830

