



Full wwPDB X-ray Structure Validation Report ⓘ

Aug 8, 2020 – 04:33 AM BST

PDB ID : 3TV3
Title : Crystal structure of broad and potent HIV-1 neutralizing antibody PGT128
in complex with Man9
Authors : Pejchal, R.; Wilson, I.A.
Deposited on : 2011-09-19
Resolution : 1.29 Å(reported)

This is a Full wwPDB X-ray Structure Validation Report for a publicly released PDB entry.

We welcome your comments at validation@mail.wwpdb.org

A user guide is available at

<https://www.wwpdb.org/validation/2017/XrayValidationReportHelp>

with specific help available everywhere you see the ⓘ symbol.

The following versions of software and data (see [references ⓘ](#)) were used in the production of this report:

MolProbity : 4.02b-467
Mogul : 1.8.5 (274361), CSD as541be (2020)
Xtriage (Phenix) : 1.13
EDS : 2.13.1
Percentile statistics : 20191225.v01 (using entries in the PDB archive December 25th 2019)
Refmac : 5.8.0158
CCP4 : 7.0.044 (Gargrove)
Ideal geometry (proteins) : Engh & Huber (2001)
Ideal geometry (DNA, RNA) : Parkinson et al. (1996)
Validation Pipeline (wwPDB-VP) : 2.13.1

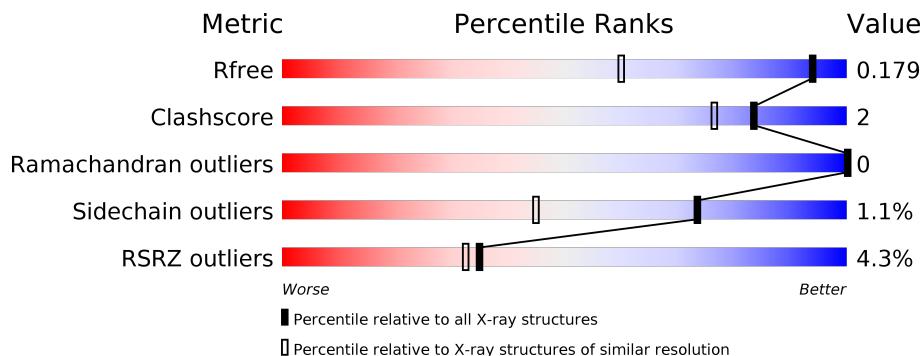
1 Overall quality at a glance

The following experimental techniques were used to determine the structure:

X-RAY DIFFRACTION

The reported resolution of this entry is 1.29 Å.

Percentile scores (ranging between 0-100) for global validation metrics of the entry are shown in the following graphic. The table shows the number of entries on which the scores are based.



Metric	Whole archive (#Entries)	Similar resolution (#Entries, resolution range(Å))
R_{free}	130704	1058 (1.30-1.30)
Clashscore	141614	1101 (1.30-1.30)
Ramachandran outliers	138981	1058 (1.30-1.30)
Sidechain outliers	138945	1058 (1.30-1.30)
RSRZ outliers	127900	1029 (1.30-1.30)

The table below summarises the geometric issues observed across the polymeric chains and their fit to the electron density. The red, orange, yellow and green segments on the lower bar indicate the fraction of residues that contain outliers for ≥ 3 , 2, 1 and 0 types of geometric quality criteria respectively. A grey segment represents the fraction of residues that are not modelled. The numeric value for each fraction is indicated below the corresponding segment, with a dot representing fractions $\leq 5\%$. The upper red bar (where present) indicates the fraction of residues that have poor fit to the electron density. The numeric value is given above the bar.

Mol	Chain	Length	Quality of chain
1	L	211	<p>2% 90% 7%</p>
2	H	239	<p>6% 92% 5%</p>
3	A	8	<p>75% 25%</p>

2 Entry composition i

There are 7 unique types of molecules in this entry. The entry contains 6988 atoms, of which 3238 are hydrogens and 0 are deuteriums.

In the tables below, the ZeroOcc column contains the number of atoms modelled with zero occupancy, the AltConf column contains the number of residues with at least one atom in alternate conformation and the Trace column contains the number of residues modelled with at most 2 atoms.

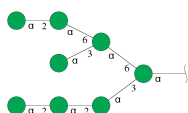
- Molecule 1 is a protein called PGT128 light chain, Ig lambda-2 chain C regions.

Mol	Chain	Residues	Atoms						ZeroOcc	AltConf	Trace
			Total	C	H	N	O	S			
1	L	205	3026	960	1496	256	310	4	0	4	0

- Molecule 2 is a protein called PGT128 heavy chain, Ig gamma-1 chain C region.

Mol	Chain	Residues	Atoms						ZeroOcc	AltConf	Trace
			Total	C	H	N	O	S			
2	H	234	3519	1136	1742	294	341	6	0	6	0

- Molecule 3 is an oligosaccharide called alpha-D-mannopyranose-(1-2)-alpha-D-mannopyranose-(1-2)-alpha-D-mannopyranose-(1-3)-[alpha-D-mannopyranose-(1-2)-alpha-D-mannopyranose-(1-6)-[alpha-D-mannopyranose-(1-3)]alpha-D-mannopyranose-(1-6)]alpha-D-mannopyranose.



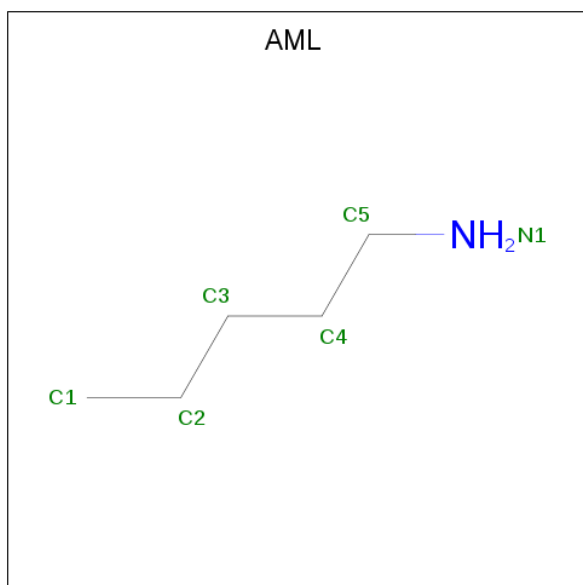
Mol	Chain	Residues	Atoms			ZeroOcc	AltConf	Trace
			Total	C	O			
3	A	8	88	48	40	0	0	0

- Molecule 4 is GLYCEROL (three-letter code: GOL) (formula: C₃H₈O₃).



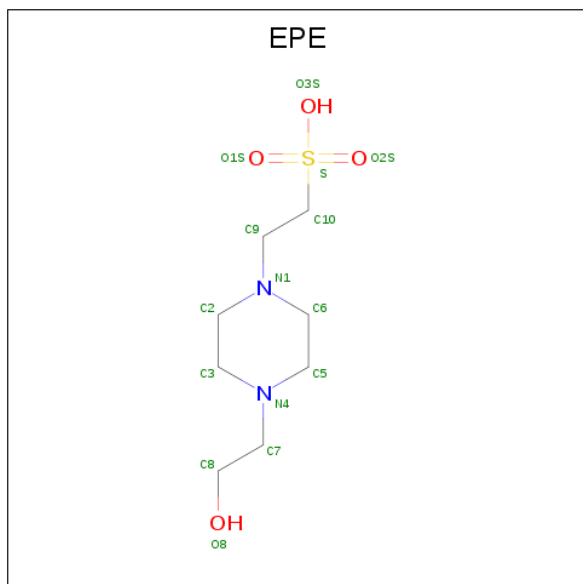
Mol	Chain	Residues	Atoms			ZeroOcc	AltConf
4	L	1	Total	C	O	0	0
			6	3	3		
4	H	1	Total	C	O	0	0
			6	3	3		
4	H	1	Total	C	O	0	0
			6	3	3		
4	H	1	Total	C	O	0	1
			12	6	6		

- Molecule 5 is AMYLAMINE (three-letter code: AML) (formula: C₅H₁₃N).



Mol	Chain	Residues	Atoms	ZeroOcc	AltConf
5	H	1	Total C 4 4	0	0

- Molecule 6 is 4-(2-HYDROXYETHYL)-1-PIPERAZINE ETHANESULFONIC ACID (three-letter code: EPE) (formula: C₈H₁₈N₂O₄S).



Mol	Chain	Residues	Atoms					ZeroOcc	AltConf
			Total	C	N	O	S		
6	H	1	15	8	2	4	1	0	0

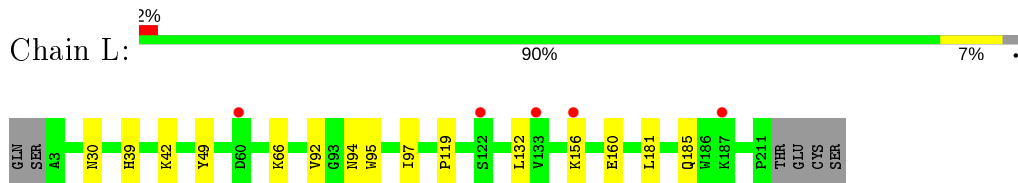
- Molecule 7 is water.

Mol	Chain	Residues	Atoms	ZeroOcc	AltConf
7	L	151	Total O 151 151	0	0
7	H	155	Total O 155 155	0	0

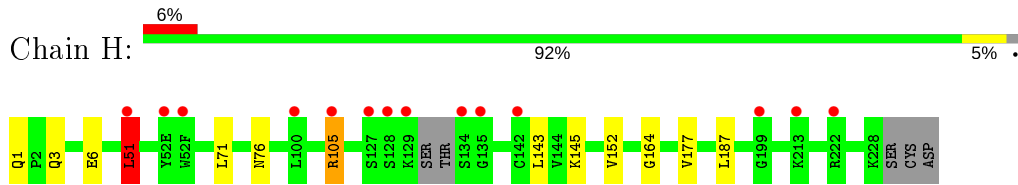
3 Residue-property plots [i](#)

These plots are drawn for all protein, RNA, DNA and oligosaccharide chains in the entry. The first graphic for a chain summarises the proportions of the various outlier classes displayed in the second graphic. The second graphic shows the sequence view annotated by issues in geometry and electron density. Residues are color-coded according to the number of geometric quality criteria for which they contain at least one outlier: green = 0, yellow = 1, orange = 2 and red = 3 or more. A red dot above a residue indicates a poor fit to the electron density ($RSRZ > 2$). Stretches of 2 or more consecutive residues without any outlier are shown as a green connector. Residues present in the sample, but not in the model, are shown in grey.

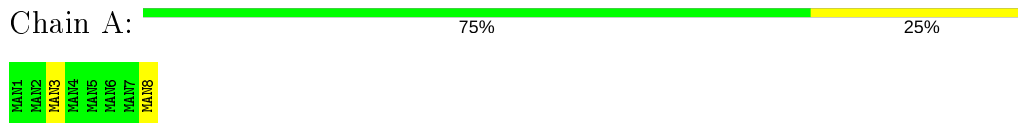
- Molecule 1: PGT128 light chain, Ig lambda-2 chain C regions



- Molecule 2: PGT128 heavy chain, Ig gamma-1 chain C region



- Molecule 3: alpha-D-mannopyranose-(1-2)-alpha-D-mannopyranose-(1-2)-alpha-D-mannopyranose-(1-3)-[alpha-D-mannopyranose-(1-2)-alpha-D-mannopyranose-(1-6)-[alpha-D-mannopyranose-(1-3)]alpha-D-mannopyranose-(1-6)]alpha-D-mannopyranose



4 Data and refinement statistics

Property	Value	Source
Space group	C 2 2 21	Depositor
Cell constants a, b, c, α , β , γ	72.14Å 106.02Å 145.31Å 90.00° 90.00° 90.00°	Depositor
Resolution (Å)	24.90 – 1.29 24.90 – 1.20	Depositor EDS
% Data completeness (in resolution range)	99.8 (24.90-1.29) 98.0 (24.90-1.20)	Depositor EDS
R_{merge}	(Not available)	Depositor
R_{sym}	0.08	Depositor
$\langle I/\sigma(I) \rangle$ ¹	2.41 (at 1.20Å)	Xtrriage
Refinement program	PHENIX (phenix.refine: 1.7.2_865)	Depositor
R, R_{free}	0.159 , 0.184 0.153 , 0.179	Depositor DCC
R_{free} test set	2000 reflections (1.18%)	wwPDB-VP
Wilson B-factor (Å ²)	13.6	Xtrriage
Anisotropy	0.388	Xtrriage
Bulk solvent k_{sol} (e/Å ³), B_{sol} (Å ²)	0.47 , 44.6	EDS
L-test for twinning ²	$\langle L \rangle = 0.49$, $\langle L^2 \rangle = 0.32$	Xtrriage
Estimated twinning fraction	No twinning to report.	Xtrriage
F_o, F_c correlation	0.97	EDS
Total number of atoms	6988	wwPDB-VP
Average B, all atoms (Å ²)	20.0	wwPDB-VP

Xtrriage's analysis on translational NCS is as follows: *The largest off-origin peak in the Patterson function is 4.15% of the height of the origin peak. No significant pseudotranslation is detected.*

¹ Intensities estimated from amplitudes.

² Theoretical values of $\langle |L| \rangle$, $\langle L^2 \rangle$ for acentric reflections are 0.5, 0.333 respectively for untwinned datasets, and 0.375, 0.2 for perfectly twinned datasets.

5 Model quality [i](#)

5.1 Standard geometry [i](#)

Bond lengths and bond angles in the following residue types are not validated in this section: EPE, GOL, PCA, AML, MAN

The Z score for a bond length (or angle) is the number of standard deviations the observed value is removed from the expected value. A bond length (or angle) with $|Z| > 5$ is considered an outlier worth inspection. RMSZ is the root-mean-square of all Z scores of the bond lengths (or angles).

Mol	Chain	Bond lengths		Bond angles	
		RMSZ	# Z >5	RMSZ	# Z >5
1	L	0.40	0/1578	0.56	0/2156
2	H	0.35	0/1839	0.61	2/2525 (0.1%)
All	All	0.37	0/3417	0.59	2/4681 (0.0%)

There are no bond length outliers.

All (2) bond angle outliers are listed below:

Mol	Chain	Res	Type	Atoms	Z	Observed(°)	Ideal(°)
2	H	51[A]	LEU	CA-CB-CG	8.21	134.19	115.30
2	H	51[B]	LEU	CA-CB-CG	8.21	134.19	115.30

There are no chirality outliers.

There are no planarity outliers.

5.2 Too-close contacts [i](#)

In the following table, the Non-H and H(model) columns list the number of non-hydrogen atoms and hydrogen atoms in the chain respectively. The H(added) column lists the number of hydrogen atoms added and optimized by MolProbity. The Clashes column lists the number of clashes within the asymmetric unit, whereas Symm-Clashes lists symmetry related clashes.

Mol	Chain	Non-H	H(model)	H(added)	Clashes	Symm-Clashes
1	L	1530	1496	1487	9	0
2	H	1777	1742	1730	7	1
3	A	88	0	73	0	0
4	H	24	0	32	2	0
4	L	6	0	8	0	0
5	H	4	0	7	0	0
6	H	15	0	17	0	0

Continued on next page...

Continued from previous page...

Mol	Chain	Non-H	H(model)	H(added)	Clashes	Symm-Clashes
7	H	155	0	0	2	0
7	L	151	0	0	0	0
All	All	3750	3238	3354	16	1

The all-atom clashscore is defined as the number of clashes found per 1000 atoms (including hydrogen atoms). The all-atom clashscore for this structure is 2.

All (16) close contacts within the same asymmetric unit are listed below, sorted by their clash magnitude.

Atom-1	Atom-2	Interatomic distance (Å)	Clash overlap (Å)
2:H:3[B]:GLN:NE2	7:H:427:HOH:O	2.09	0.83
4:H:311[B]:GOL:H11	7:H:369:HOH:O	1.86	0.75
2:H:51[B]:LEU:HD11	2:H:71:LEU:HG	1.89	0.54
1:L:30:ASN:O	1:L:66:LYS:NZ	2.47	0.48
2:H:152:VAL:CG2	2:H:187:LEU:HD21	2.46	0.46
1:L:119:PRO:HA	1:L:132:LEU:HD23	1.98	0.46
2:H:152:VAL:HG23	2:H:187:LEU:HD21	1.99	0.45
1:L:94:ASN:HB3	1:L:95:TRP:CE3	2.53	0.43
1:L:92:VAL:HG11	1:L:97:ILE:HD11	2.00	0.43
1:L:49:TYR:CE2	4:H:310:GOL:H11	2.55	0.42
2:H:6:GLU:OE2	2:H:105:ARG:HD3	2.19	0.42
1:L:181:LEU:HB3	1:L:185:GLN:HG3	2.01	0.42
1:L:160:GLU:HB3	2:H:177:VAL:HG11	2.02	0.42
1:L:92:VAL:HG11	1:L:97:ILE:CD1	2.50	0.42
2:H:143:LEU:HG	2:H:145:LYS:HG3	2.03	0.41
1:L:39:HIS:HB2	1:L:42:LYS:HE3	2.04	0.40

All (1) symmetry-related close contacts are listed below. The label for Atom-2 includes the symmetry operator and encoded unit-cell translations to be applied.

Atom-1	Atom-2	Interatomic distance (Å)	Clash overlap (Å)
2:H:3[B]:GLN:HE22	2:H:164:GLY:O[4_555]	1.56	0.04

5.3 Torsion angles [\(i\)](#)

5.3.1 Protein backbone [\(i\)](#)

In the following table, the Percentiles column shows the percent Ramachandran outliers of the chain as a percentile score with respect to all X-ray entries followed by that with respect to entries

of similar resolution.

The Analysed column shows the number of residues for which the backbone conformation was analysed, and the total number of residues.

Mol	Chain	Analysed	Favoured	Allowed	Outliers	Percentiles	
1	L	207/211 (98%)	203 (98%)	4 (2%)	0	100	100
2	H	236/239 (99%)	233 (99%)	3 (1%)	0	100	100
All	All	443/450 (98%)	436 (98%)	7 (2%)	0	100	100

There are no Ramachandran outliers to report.

5.3.2 Protein sidechains [i](#)

In the following table, the Percentiles column shows the percent sidechain outliers of the chain as a percentile score with respect to all X-ray entries followed by that with respect to entries of similar resolution.

The Analysed column shows the number of residues for which the sidechain conformation was analysed, and the total number of residues.

Mol	Chain	Analysed	Rotameric	Outliers	Percentiles	
1	L	173/177 (98%)	172 (99%)	1 (1%)	86	65
2	H	198/202 (98%)	194 (98%)	4 (2%)	55	17
All	All	371/379 (98%)	366 (99%)	5 (1%)	73	35

All (5) residues with a non-rotameric sidechain are listed below:

Mol	Chain	Res	Type
1	L	156	LYS
2	H	51[A]	LEU
2	H	51[B]	LEU
2	H	76	ASN
2	H	105	ARG

Some sidechains can be flipped to improve hydrogen bonding and reduce clashes. There are no such sidechains identified.

5.3.3 RNA [i](#)

There are no RNA molecules in this entry.

5.4 Non-standard residues in protein, DNA, RNA chains [i](#)

1 non-standard protein/DNA/RNA residue is modelled in this entry.

In the following table, the Counts columns list the number of bonds (or angles) for which Mogul statistics could be retrieved, the number of bonds (or angles) that are observed in the model and the number of bonds (or angles) that are defined in the Chemical Component Dictionary. The Link column lists molecule types, if any, to which the group is linked. The Z score for a bond length (or angle) is the number of standard deviations the observed value is removed from the expected value. A bond length (or angle) with $|Z| > 2$ is considered an outlier worth inspection. RMSZ is the root-mean-square of all Z scores of the bond lengths (or angles).

Mol	Type	Chain	Res	Link	Bond lengths			Bond angles		
					Counts	RMSZ	# Z > 2	Counts	RMSZ	# Z > 2
2	PCA	H	1	2	7,8,9	1.74	1 (14%)	9,10,12	1.59	2 (22%)

In the following table, the Chirals column lists the number of chiral outliers, the number of chiral centers analysed, the number of these observed in the model and the number defined in the Chemical Component Dictionary. Similar counts are reported in the Torsion and Rings columns. '-' means no outliers of that kind were identified.

Mol	Type	Chain	Res	Link	Chirals	Torsions	Rings
2	PCA	H	1	2	-	0/0/11/13	0/1/1/1

All (1) bond length outliers are listed below:

Mol	Chain	Res	Type	Atoms	Z	Observed(Å)	Ideal(Å)
2	H	1	PCA	CD-N	4.50	1.46	1.34

All (2) bond angle outliers are listed below:

Mol	Chain	Res	Type	Atoms	Z	Observed(°)	Ideal(°)
2	H	1	PCA	CA-N-CD	-2.13	106.27	113.58
2	H	1	PCA	OE-CD-CG	-2.11	123.08	126.76

There are no chirality outliers.

There are no torsion outliers.

There are no ring outliers.

No monomer is involved in short contacts.

5.5 Carbohydrates [i](#)

8 monosaccharides are modelled in this entry.

In the following table, the Counts columns list the number of bonds (or angles) for which Mogul statistics could be retrieved, the number of bonds (or angles) that are observed in the model and the number of bonds (or angles) that are defined in the Chemical Component Dictionary. The Link column lists molecule types, if any, to which the group is linked. The Z score for a bond length (or angle) is the number of standard deviations the observed value is removed from the expected value. A bond length (or angle) with $|Z| > 2$ is considered an outlier worth inspection. RMSZ is the root-mean-square of all Z scores of the bond lengths (or angles).

Mol	Type	Chain	Res	Link	Bond lengths			Bond angles		
					Counts	RMSZ	# Z > 2	Counts	RMSZ	# Z > 2
3	MAN	A	1	3,5	11,11,12	0.62	0	15,15,17	0.76	0
3	MAN	A	2	3	11,11,12	0.51	0	15,15,17	0.69	0
3	MAN	A	3	3	11,11,12	0.66	0	15,15,17	1.32	1 (6%)
3	MAN	A	4	3	11,11,12	0.49	0	15,15,17	0.68	0
3	MAN	A	5	3	11,11,12	0.59	0	15,15,17	0.78	0
3	MAN	A	6	3	11,11,12	0.67	0	15,15,17	1.00	0
3	MAN	A	7	3	11,11,12	0.54	0	15,15,17	0.67	0
3	MAN	A	8	3	11,11,12	0.65	0	15,15,17	0.91	1 (6%)

In the following table, the Chirals column lists the number of chiral outliers, the number of chiral centers analysed, the number of these observed in the model and the number defined in the Chemical Component Dictionary. Similar counts are reported in the Torsion and Rings columns. '-' means no outliers of that kind were identified.

Mol	Type	Chain	Res	Link	Chirals	Torsions	Rings
3	MAN	A	1	3,5	-	0/2/19/22	0/1/1/1
3	MAN	A	2	3	-	0/2/19/22	0/1/1/1
3	MAN	A	3	3	-	0/2/19/22	0/1/1/1
3	MAN	A	4	3	-	0/2/19/22	0/1/1/1
3	MAN	A	5	3	-	0/2/19/22	0/1/1/1
3	MAN	A	6	3	-	2/2/19/22	0/1/1/1
3	MAN	A	7	3	-	0/2/19/22	0/1/1/1
3	MAN	A	8	3	-	1/2/19/22	0/1/1/1

There are no bond length outliers.

All (2) bond angle outliers are listed below:

Mol	Chain	Res	Type	Atoms	Z	Observed(°)	Ideal(°)
3	A	3	MAN	C1-O5-C5	3.72	117.23	112.19
3	A	8	MAN	C2-C3-C4	-2.14	107.19	110.89

There are no chirality outliers.

All (3) torsion outliers are listed below:

Mol	Chain	Res	Type	Atoms
3	A	8	MAN	O5-C5-C6-O6
3	A	6	MAN	C4-C5-C6-O6
3	A	6	MAN	O5-C5-C6-O6

There are no ring outliers.

No monomer is involved in short contacts.

5.6 Ligand geometry [i](#)

7 ligands are modelled in this entry.

In the following table, the Counts columns list the number of bonds (or angles) for which Mogul statistics could be retrieved, the number of bonds (or angles) that are observed in the model and the number of bonds (or angles) that are defined in the Chemical Component Dictionary. The Link column lists molecule types, if any, to which the group is linked. The Z score for a bond length (or angle) is the number of standard deviations the observed value is removed from the expected value. A bond length (or angle) with $|Z| > 2$ is considered an outlier worth inspection. RMSZ is the root-mean-square of all Z scores of the bond lengths (or angles).

Mol	Type	Chain	Res	Link	Bond lengths			Bond angles		
					Counts	RMSZ	# Z > 2	Counts	RMSZ	# Z > 2
4	GOL	L	312	-	5,5,5	0.37	0	5,5,5	0.24	0
6	EPE	H	313	-	15,15,15	0.72	1 (6%)	18,20,20	1.59	4 (22%)
4	GOL	H	309	-	5,5,5	0.32	0	5,5,5	0.33	0
4	GOL	H	311[B]	-	5,5,5	0.40	0	5,5,5	0.25	0
4	GOL	H	310	-	5,5,5	0.35	0	5,5,5	0.39	0
5	AML	H	300	3	3,3,5	0.43	0	2,2,4	0.74	0
4	GOL	H	311[A]	-	5,5,5	0.41	0	5,5,5	0.31	0

In the following table, the Chirals column lists the number of chiral outliers, the number of chiral centers analysed, the number of these observed in the model and the number defined in the Chemical Component Dictionary. Similar counts are reported in the Torsion and Rings columns. '-' means no outliers of that kind were identified.

Mol	Type	Chain	Res	Link	Chirals	Torsions	Rings
4	GOL	L	312	-	-	2/4/4/4	-
6	EPE	H	313	-	-	0/9/19/19	0/1/1/1
4	GOL	H	309	-	-	1/4/4/4	-
4	GOL	H	311[B]	-	-	2/4/4/4	-
4	GOL	H	310	-	-	2/4/4/4	-
5	AML	H	300	3	-	0/1/1/3	-
4	GOL	H	311[A]	-	-	0/4/4/4	-

All (1) bond length outliers are listed below:

Mol	Chain	Res	Type	Atoms	Z	Observed(Å)	Ideal(Å)
6	H	313	EPE	C10-S	2.33	1.80	1.77

All (4) bond angle outliers are listed below:

Mol	Chain	Res	Type	Atoms	Z	Observed(°)	Ideal(°)
6	H	313	EPE	O2S-S-C10	3.33	110.93	106.92
6	H	313	EPE	C5-N4-C3	3.29	116.24	108.83
6	H	313	EPE	C7-N4-C5	3.00	118.90	111.23
6	H	313	EPE	O1S-S-C10	-2.54	103.86	106.92

There are no chirality outliers.

All (7) torsion outliers are listed below:

Mol	Chain	Res	Type	Atoms
4	L	312	GOL	C1-C2-C3-O3
4	H	311[B]	GOL	O1-C1-C2-C3
4	H	310	GOL	O1-C1-C2-C3
4	L	312	GOL	O2-C2-C3-O3
4	H	311[B]	GOL	O1-C1-C2-O2
4	H	310	GOL	O1-C1-C2-O2
4	H	309	GOL	C1-C2-C3-O3

There are no ring outliers.

2 monomers are involved in 2 short contacts:

Mol	Chain	Res	Type	Clashes	Symm-Clashes
4	H	311[B]	GOL	1	0
4	H	310	GOL	1	0

5.7 Other polymers [i](#)

There are no such residues in this entry.

5.8 Polymer linkage issues [i](#)

There are no chain breaks in this entry.

6 Fit of model and data [i](#)

6.1 Protein, DNA and RNA chains [i](#)

In the following table, the column labelled ‘#RSRZ> 2’ contains the number (and percentage) of RSRZ outliers, followed by percent RSRZ outliers for the chain as percentile scores relative to all X-ray entries and entries of similar resolution. The OWAB column contains the minimum, median, 95th percentile and maximum values of the occupancy-weighted average B-factor per residue. The column labelled ‘Q< 0.9’ lists the number of (and percentage) of residues with an average occupancy less than 0.9.

Mol	Chain	Analysed	<RSRZ>	#RSRZ>2	OWAB(Å ²)	Q<0.9
1	L	205/211 (97%)	0.16	5 (2%) 59 58	10, 17, 29, 37	0
2	H	233/239 (97%)	0.28	14 (6%) 21 18	11, 17, 29, 36	0
All	All	438/450 (97%)	0.23	19 (4%) 35 32	10, 17, 29, 37	0

All (19) RSRZ outliers are listed below:

Mol	Chain	Res	Type	RSRZ
2	H	128	SER	5.3
2	H	129	LYS	5.2
2	H	51[A]	LEU	4.6
2	H	52(E)	TYR	4.3
2	H	105	ARG	4.2
2	H	52(F)	TRP	3.8
2	H	135	GLY	3.4
2	H	127	SER	3.3
2	H	142	CYS	3.1
1	L	156	LYS	3.1
2	H	134	SER	3.0
1	L	122	SER	2.8
2	H	100	LEU	2.5
2	H	213	LYS	2.4
1	L	60	ASP	2.4
2	H	199	GLY	2.3
2	H	222	ARG	2.3
1	L	133	VAL	2.2
1	L	187	LYS	2.0

6.2 Non-standard residues in protein, DNA, RNA chains [i](#)

In the following table, the Atoms column lists the number of modelled atoms in the group and the number defined in the chemical component dictionary. The B-factors column lists the minimum,

median, 95th percentile and maximum values of B factors of atoms in the group. The column labelled 'Q< 0.9' lists the number of atoms with occupancy less than 0.9.

Mol	Type	Chain	Res	Atoms	RSCC	RSR	B-factors(Å ²)	Q<0.9
2	PCA	H	1	8/9	0.97	0.07	17,19,25,25	0

6.3 Carbohydrates [i](#)

In the following table, the Atoms column lists the number of modelled atoms in the group and the number defined in the chemical component dictionary. The B-factors column lists the minimum, median, 95th percentile and maximum values of B factors of atoms in the group. The column labelled 'Q< 0.9' lists the number of atoms with occupancy less than 0.9.

Mol	Type	Chain	Res	Atoms	RSCC	RSR	B-factors(Å ²)	Q<0.9
3	MAN	A	8	11/12	0.80	0.34	40,45,47,48	0
3	MAN	A	6	11/12	0.91	0.15	24,32,34,35	0
3	MAN	A	5	11/12	0.91	0.15	25,27,35,36	0
3	MAN	A	4	11/12	0.96	0.07	13,15,18,20	0
3	MAN	A	2	11/12	0.96	0.07	17,21,26,30	0
3	MAN	A	7	11/12	0.97	0.07	16,18,23,23	0
3	MAN	A	1	11/12	0.98	0.09	19,22,25,26	0
3	MAN	A	3	11/12	0.98	0.07	14,15,17,18	0

6.4 Ligands [i](#)

In the following table, the Atoms column lists the number of modelled atoms in the group and the number defined in the chemical component dictionary. The B-factors column lists the minimum, median, 95th percentile and maximum values of B factors of atoms in the group. The column labelled 'Q< 0.9' lists the number of atoms with occupancy less than 0.9.

Mol	Type	Chain	Res	Atoms	RSCC	RSR	B-factors(Å ²)	Q<0.9
4	GOL	H	311[A]	6/6	0.74	0.30	18,24,26,30	6
4	GOL	H	311[B]	6/6	0.74	0.30	14,23,25,27	6
4	GOL	H	310	6/6	0.89	0.17	21,33,35,37	0
4	GOL	L	312	6/6	0.94	0.16	21,33,36,37	0
5	AML	H	300	4/6	0.95	0.11	24,29,32,34	0
6	EPE	H	313	15/15	0.96	0.10	13,21,23,23	0
4	GOL	H	309	6/6	0.96	0.09	17,21,21,22	0

6.5 Other polymers [i](#)

There are no such residues in this entry.