



# Full wwPDB X-ray Structure Validation Report ⓘ

Jun 17, 2024 – 03:16 PM EDT

PDB ID : 3TW5  
Title : Crystal structure of the GP42 transglutaminase from *Phytophthora sojae*  
Authors : Reiss, K.; Kirchner, E.; Zocher, G.; Stehle, T.  
Deposited on : 2011-09-21  
Resolution : 2.95 Å(reported)

This is a Full wwPDB X-ray Structure Validation Report for a publicly released PDB entry.

We welcome your comments at [validation@mail.wwpdb.org](mailto:validation@mail.wwpdb.org)

A user guide is available at

<https://www.wwpdb.org/validation/2017/XrayValidationReportHelp>

with specific help available everywhere you see the ⓘ symbol.

The types of validation reports are described at

<http://www.wwpdb.org/validation/2017/FAQs#types>.

---

The following versions of software and data (see [references ⓘ](#)) were used in the production of this report:

MolProbity : 4.02b-467  
Mogul : 2022.3.0, CSD as543be (2022)  
Xtriage (Phenix) : 1.20.1  
EDS : 2.37.1  
Percentile statistics : 20191225.v01 (using entries in the PDB archive December 25th 2019)  
Refmac : 5.8.0158  
CCP4 : 7.0.044 (Gargrove)  
Ideal geometry (proteins) : Engh & Huber (2001)  
Ideal geometry (DNA, RNA) : Parkinson et al. (1996)  
Validation Pipeline (wwPDB-VP) : 2.37.1

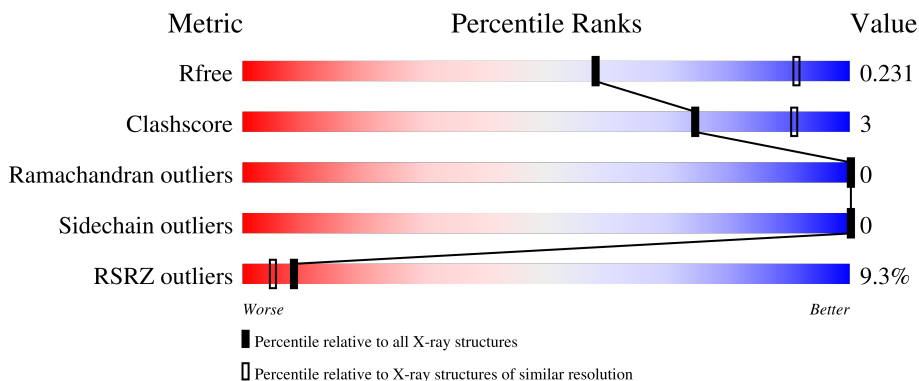
# 1 Overall quality at a glance

The following experimental techniques were used to determine the structure:

*X-RAY DIFFRACTION*

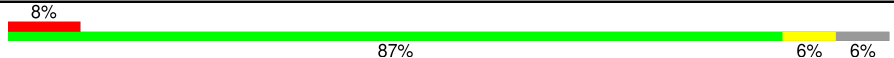
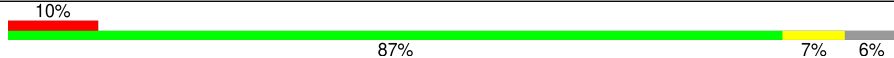
The reported resolution of this entry is 2.95 Å.

Percentile scores (ranging between 0-100) for global validation metrics of the entry are shown in the following graphic. The table shows the number of entries on which the scores are based.



Metric	Whole archive (#Entries)	Similar resolution (#Entries, resolution range(Å))
$R_{free}$	130704	3104 (3.00-2.92)
Clashscore	141614	3462 (3.00-2.92)
Ramachandran outliers	138981	3340 (3.00-2.92)
Sidechain outliers	138945	3343 (3.00-2.92)
RSRZ outliers	127900	2986 (3.00-2.92)

The table below summarises the geometric issues observed across the polymeric chains and their fit to the electron density. The red, orange, yellow and green segments of the lower bar indicate the fraction of residues that contain outliers for  $\geq 3$ , 2, 1 and 0 types of geometric quality criteria respectively. A grey segment represents the fraction of residues that are not modelled. The numeric value for each fraction is indicated below the corresponding segment, with a dot representing fractions  $\leq 5\%$ . The upper red bar (where present) indicates the fraction of residues that have poor fit to the electron density. The numeric value is given above the bar.

Mol	Chain	Length	Quality of chain
1	A	367	
1	B	367	

## 2 Entry composition [i](#)

There are 2 unique types of molecules in this entry. The entry contains 5255 atoms, of which 0 are hydrogens and 0 are deuteriums.

In the tables below, the ZeroOcc column contains the number of atoms modelled with zero occupancy, the AltConf column contains the number of residues with at least one atom in alternate conformation and the Trace column contains the number of residues modelled with at most 2 atoms.

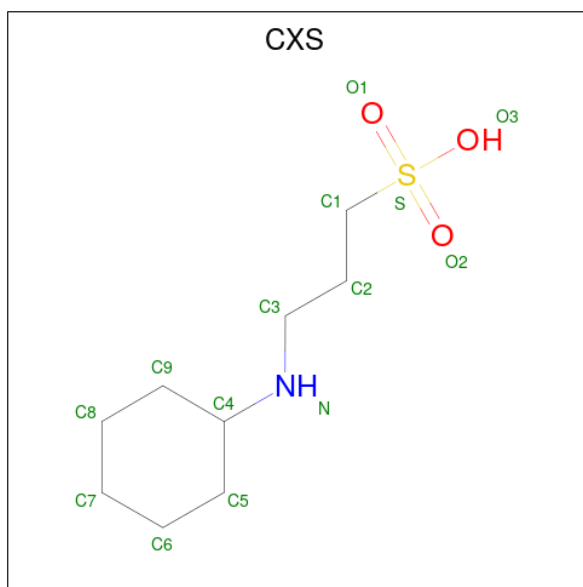
- Molecule 1 is a protein called Transglutaminase elicitor.

Mol	Chain	Residues	Atoms					ZeroOcc	AltConf	Trace
			Total	C	N	O	S			
1	A	344	2619	1669	417	521	12	0	0	0
1	B	344	2608	1663	415	518	12	0	0	0

There are 2 discrepancies between the modelled and reference sequences:

Chain	Residue	Modelled	Actual	Comment	Reference
A	290	SER	CYS	engineered mutation	UNP Q6Q475
B	290	SER	CYS	engineered mutation	UNP Q6Q475

- Molecule 2 is 3-CYCLOHEXYL-1-PROPYLSULFONIC ACID (three-letter code: CXS) (formula: C<sub>9</sub>H<sub>19</sub>NO<sub>3</sub>S).



Mol	Chain	Residues	Atoms					ZeroOcc	AltConf
			Total	C	N	O	S		
2	A	1	14	9	1	3	1	0	0

*Continued on next page...*

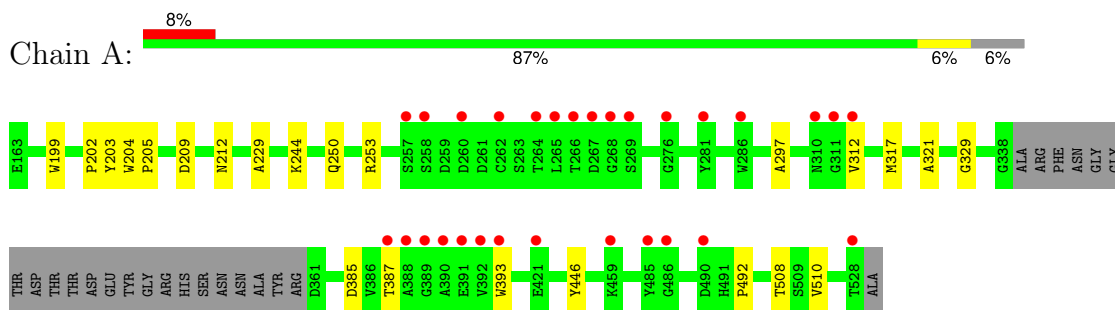
*Continued from previous page...*

Mol	Chain	Residues	Atoms					ZeroOcc	AltConf
			Total	C	N	O	S		
2	A	1	14	9	1	3	1	0	0

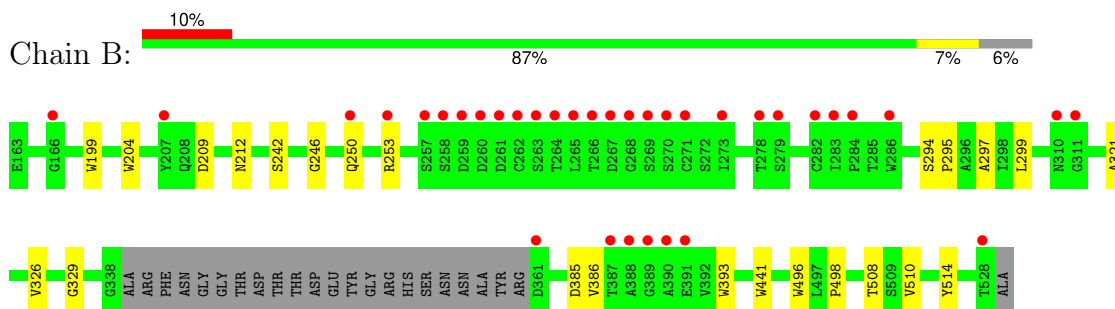
### 3 Residue-property plots [i](#)

These plots are drawn for all protein, RNA, DNA and oligosaccharide chains in the entry. The first graphic for a chain summarises the proportions of the various outlier classes displayed in the second graphic. The second graphic shows the sequence view annotated by issues in geometry and electron density. Residues are color-coded according to the number of geometric quality criteria for which they contain at least one outlier: green = 0, yellow = 1, orange = 2 and red = 3 or more. A red dot above a residue indicates a poor fit to the electron density ( $RSRZ > 2$ ). Stretches of 2 or more consecutive residues without any outlier are shown as a green connector. Residues present in the sample, but not in the model, are shown in grey.

- Molecule 1: Transglutaminase elicitor



- Molecule 1: Transglutaminase elicitor



## 4 Data and refinement statistics

Property	Value	Source
Space group	P 62 2 2	Depositor
Cell constants a, b, c, $\alpha$ , $\beta$ , $\gamma$	195.48Å 195.48Å 137.30Å 90.00° 90.00° 120.00°	Depositor
Resolution (Å)	30.00 – 2.95 33.86 – 2.86	Depositor EDS
% Data completeness (in resolution range)	96.6 (30.00-2.95) 96.7 (33.86-2.86)	Depositor EDS
$R_{merge}$	0.14	Depositor
$R_{sym}$	0.09	Depositor
$\langle I/\sigma(I) \rangle$ <sup>1</sup>	2.21 (at 2.85Å)	Xtrriage
Refinement program	REFMAC 5.5.0109	Depositor
R, $R_{free}$	0.215 , 0.234 0.211 , 0.231	Depositor DCC
$R_{free}$ test set	1737 reflections (4.97%)	wwPDB-VP
Wilson B-factor (Å <sup>2</sup> )	48.5	Xtrriage
Anisotropy	0.428	Xtrriage
Bulk solvent $k_{sol}$ (e/Å <sup>3</sup> ), $B_{sol}$ (Å <sup>2</sup> )	0.41 , 22.8	EDS
L-test for twinning <sup>2</sup>	$\langle  L  \rangle = 0.50$ , $\langle L^2 \rangle = 0.33$	Xtrriage
Estimated twinning fraction	No twinning to report.	Xtrriage
$F_o, F_c$ correlation	0.92	EDS
Total number of atoms	5255	wwPDB-VP
Average B, all atoms (Å <sup>2</sup> )	46.0	wwPDB-VP

Xtrriage's analysis on translational NCS is as follows: *The largest off-origin peak in the Patterson function is 3.03% of the height of the origin peak. No significant pseudotranslation is detected.*

<sup>1</sup>Intensities estimated from amplitudes.

<sup>2</sup>Theoretical values of  $\langle |L| \rangle$ ,  $\langle L^2 \rangle$  for acentric reflections are 0.5, 0.333 respectively for untwinned datasets, and 0.375, 0.2 for perfectly twinned datasets.

## 5 Model quality [i](#)

### 5.1 Standard geometry [i](#)

Bond lengths and bond angles in the following residue types are not validated in this section: CXS

The Z score for a bond length (or angle) is the number of standard deviations the observed value is removed from the expected value. A bond length (or angle) with  $|Z| > 5$  is considered an outlier worth inspection. RMSZ is the root-mean-square of all Z scores of the bond lengths (or angles).

Mol	Chain	Bond lengths		Bond angles	
		RMSZ	# Z  >5	RMSZ	# Z  >5
1	A	0.32	0/2690	0.46	0/3674
1	B	0.32	0/2679	0.46	0/3661
All	All	0.32	0/5369	0.46	0/7335

There are no bond length outliers.

There are no bond angle outliers.

There are no chirality outliers.

There are no planarity outliers.

### 5.2 Too-close contacts [i](#)

In the following table, the Non-H and H(model) columns list the number of non-hydrogen atoms and hydrogen atoms in the chain respectively. The H(added) column lists the number of hydrogen atoms added and optimized by MolProbity. The Clashes column lists the number of clashes within the asymmetric unit, whereas Symm-Clashes lists symmetry-related clashes.

Mol	Chain	Non-H	H(model)	H(added)	Clashes	Symm-Clashes
1	A	2619	0	2451	20	0
1	B	2608	0	2432	13	0
2	A	28	0	38	0	0
All	All	5255	0	4921	33	0

The all-atom clashscore is defined as the number of clashes found per 1000 atoms (including hydrogen atoms). The all-atom clashscore for this structure is 3.

All (33) close contacts within the same asymmetric unit are listed below, sorted by their clash magnitude.

Atom-1	Atom-2	Interatomic distance (Å)	Clash overlap (Å)
1:A:387:THR:HG21	1:A:393:TRP:HD1	1.59	0.66
1:B:508:THR:HG22	1:B:510:VAL:H	1.59	0.65
1:A:202:PRO:HD3	1:A:317:MET:HE1	1.81	0.63
1:A:508:THR:HG22	1:A:510:VAL:H	1.64	0.62
1:A:244:LYS:HG3	1:A:510:VAL:HG12	1.84	0.59
1:A:204:TRP:CZ2	1:A:321:ALA:HB2	2.38	0.58
1:A:385:ASP:HA	1:A:393:TRP:O	2.07	0.55
1:A:202:PRO:HD3	1:A:317:MET:CE	2.37	0.54
1:A:317:MET:HE1	1:A:446:TYR:HA	1.89	0.54
1:B:299:LEU:HD11	1:B:498:PRO:HB2	1.90	0.53
1:A:229:ALA:HB2	1:A:312:VAL:CG1	2.38	0.53
1:B:386:VAL:HG11	1:B:441:TRP:CZ2	2.43	0.53
1:A:202:PRO:HG2	1:A:204:TRP:CE2	2.43	0.53
1:A:317:MET:CE	1:A:446:TYR:HA	2.40	0.51
1:B:204:TRP:CZ2	1:B:321:ALA:HB2	2.46	0.50
1:A:250:GLN:HE21	1:A:253:ARG:HE	1.60	0.49
1:A:329:GLY:HA3	1:A:508:THR:HG23	1.94	0.49
1:A:250:GLN:NE2	1:A:253:ARG:HE	2.11	0.49
1:B:295:PRO:HG3	1:B:496:TRP:CH2	2.49	0.48
1:A:387:THR:HG21	1:A:393:TRP:CD1	2.43	0.48
1:B:385:ASP:HA	1:B:393:TRP:O	2.15	0.47
1:B:199:TRP:CE2	1:B:297:ALA:HA	2.49	0.47
1:B:294:SER:HB2	1:B:295:PRO:HD3	1.97	0.45
1:A:199:TRP:CE2	1:A:297:ALA:HA	2.51	0.44
1:A:385:ASP:O	1:A:492:PRO:HA	2.18	0.44
1:A:203:TYR:CZ	1:A:205:PRO:HG3	2.52	0.44
1:B:209:ASP:O	1:B:212:ASN:HB2	2.19	0.43
1:B:242:SER:HA	1:B:246:GLY:HA3	2.01	0.42
1:B:326:VAL:HG11	1:B:514:TYR:CD1	2.53	0.42
1:A:209:ASP:O	1:A:212:ASN:HB2	2.19	0.42
1:A:229:ALA:HB2	1:A:312:VAL:HG11	2.02	0.41
1:B:250:GLN:HE21	1:B:253:ARG:HE	1.68	0.41
1:B:329:GLY:HA3	1:B:508:THR:HG23	2.03	0.40

There are no symmetry-related clashes.

## 5.3 Torsion angles [\(i\)](#)

### 5.3.1 Protein backbone [\(i\)](#)

In the following table, the Percentiles column shows the percent Ramachandran outliers of the chain as a percentile score with respect to all X-ray entries followed by that with respect to entries



of similar resolution.

The Analysed column shows the number of residues for which the backbone conformation was analysed, and the total number of residues.

Mol	Chain	Analysed	Favoured	Allowed	Outliers	Percentiles	
1	A	340/367 (93%)	323 (95%)	17 (5%)	0	100	100
1	B	340/367 (93%)	324 (95%)	16 (5%)	0	100	100
All	All	680/734 (93%)	647 (95%)	33 (5%)	0	100	100

There are no Ramachandran outliers to report.

### 5.3.2 Protein sidechains [i](#)

In the following table, the Percentiles column shows the percent sidechain outliers of the chain as a percentile score with respect to all X-ray entries followed by that with respect to entries of similar resolution.

The Analysed column shows the number of residues for which the sidechain conformation was analysed, and the total number of residues.

Mol	Chain	Analysed	Rotameric	Outliers	Percentiles	
1	A	275/300 (92%)	275 (100%)	0	100	100
1	B	272/300 (91%)	272 (100%)	0	100	100
All	All	547/600 (91%)	547 (100%)	0	100	100

There are no protein residues with a non-rotameric sidechain to report.

Sometimes sidechains can be flipped to improve hydrogen bonding and reduce clashes. All (6) such sidechains are listed below:

Mol	Chain	Res	Type
1	A	250	GLN
1	A	491	HIS
1	B	250	GLN
1	B	333	GLN
1	B	415	GLN
1	B	505	ASN

### 5.3.3 RNA [i](#)

There are no RNA molecules in this entry.

## 5.4 Non-standard residues in protein, DNA, RNA chains [i](#)

There are no non-standard protein/DNA/RNA residues in this entry.

## 5.5 Carbohydrates [i](#)

There are no monosaccharides in this entry.

## 5.6 Ligand geometry [i](#)

2 ligands are modelled in this entry.

In the following table, the Counts columns list the number of bonds (or angles) for which Mogul statistics could be retrieved, the number of bonds (or angles) that are observed in the model and the number of bonds (or angles) that are defined in the Chemical Component Dictionary. The Link column lists molecule types, if any, to which the group is linked. The Z score for a bond length (or angle) is the number of standard deviations the observed value is removed from the expected value. A bond length (or angle) with  $|Z| > 2$  is considered an outlier worth inspection. RMSZ is the root-mean-square of all Z scores of the bond lengths (or angles).

Mol	Type	Chain	Res	Link	Bond lengths			Bond angles		
					Counts	RMSZ	# Z  > 2	Counts	RMSZ	# Z  > 2
2	CXS	A	530	-	14,14,14	1.29	1 (7%)	18,18,18	0.97	1 (5%)
2	CXS	A	1	-	14,14,14	1.39	1 (7%)	18,18,18	0.97	1 (5%)

In the following table, the Chirals column lists the number of chiral outliers, the number of chiral centers analysed, the number of these observed in the model and the number defined in the Chemical Component Dictionary. Similar counts are reported in the Torsion and Rings columns. '-' means no outliers of that kind were identified.

Mol	Type	Chain	Res	Link	Chirals	Torsions	Rings
2	CXS	A	530	-	-	1/8/16/16	0/1/1/1
2	CXS	A	1	-	-	5/8/16/16	0/1/1/1

All (2) bond length outliers are listed below:

Mol	Chain	Res	Type	Atoms	Z	Observed(Å)	Ideal(Å)
2	A	1	CXS	C1-S	4.34	1.83	1.77
2	A	530	CXS	C1-S	3.83	1.83	1.77

All (2) bond angle outliers are listed below:

Mol	Chain	Res	Type	Atoms	Z	Observed(°)	Ideal(°)
2	A	1	CXS	O1-S-C1	2.02	109.79	106.73
2	A	530	CXS	O3-S-C1	2.02	109.96	106.00

There are no chirality outliers.

All (6) torsion outliers are listed below:

Mol	Chain	Res	Type	Atoms
2	A	1	CXS	C2-C1-S-O3
2	A	1	CXS	S-C1-C2-C3
2	A	1	CXS	C2-C3-N-C4
2	A	1	CXS	C2-C1-S-O1
2	A	1	CXS	C2-C1-S-O2
2	A	530	CXS	C9-C4-N-C3

There are no ring outliers.

No monomer is involved in short contacts.

## 5.7 Other polymers [i](#)

There are no such residues in this entry.

## 5.8 Polymer linkage issues [i](#)

There are no chain breaks in this entry.

## 6 Fit of model and data

### 6.1 Protein, DNA and RNA chains

In the following table, the column labelled ‘#RSRZ > 2’ contains the number (and percentage) of RSRZ outliers, followed by percent RSRZ outliers for the chain as percentile scores relative to all X-ray entries and entries of similar resolution. The OWAB column contains the minimum, median, 95<sup>th</sup> percentile and maximum values of the occupancy-weighted average B-factor per residue. The column labelled ‘Q < 0.9’ lists the number of (and percentage) of residues with an average occupancy less than 0.9.

Mol	Chain	Analysed	<RSRZ>	#RSRZ>2	OWAB(Å <sup>2</sup> )	Q<0.9
1	A	344/367 (93%)	0.28	29 (8%) <b>11</b> <b>6</b>	35, 44, 67, 75	0
1	B	344/367 (93%)	0.33	35 (10%) <b>6</b> <b>4</b>	35, 44, 68, 76	0
All	All	688/734 (93%)	0.31	64 (9%) <b>8</b> <b>5</b>	35, 44, 68, 76	0

All (64) RSRZ outliers are listed below:

Mol	Chain	Res	Type	RSRZ
1	A	390	ALA	7.2
1	B	264	THR	5.3
1	A	387	THR	5.2
1	B	390	ALA	4.9
1	B	263	SER	4.9
1	A	265	LEU	4.8
1	B	389	GLY	4.7
1	B	268	GLY	4.6
1	A	389	GLY	4.4
1	B	262	CYS	4.3
1	B	388	ALA	4.3
1	A	267	ASP	4.3
1	B	266	THR	4.2
1	B	278	THR	4.1
1	B	267	ASP	4.1
1	B	269	SER	3.9
1	B	387	THR	3.9
1	B	260	ASP	3.8
1	A	266	THR	3.7
1	B	265	LEU	3.6
1	B	258	SER	3.3
1	A	388	ALA	3.2
1	B	286	TRP	3.2
1	A	268	GLY	3.1

*Continued on next page...*

*Continued from previous page...*

<b>Mol</b>	<b>Chain</b>	<b>Res</b>	<b>Type</b>	<b>RSRZ</b>
1	B	259	ASP	3.1
1	A	391	GLU	3.0
1	A	393	TRP	3.0
1	B	391	GLU	3.0
1	A	260	ASP	2.9
1	B	284	PRO	2.8
1	A	528	THR	2.8
1	A	286	TRP	2.8
1	B	257	SER	2.7
1	B	528	THR	2.6
1	B	271	CYS	2.6
1	A	269	SER	2.6
1	A	262	CYS	2.5
1	A	392	VAL	2.5
1	B	207	TYR	2.5
1	B	253	ARG	2.5
1	B	166	GLY	2.4
1	B	270	SER	2.4
1	A	276	GLY	2.4
1	A	257	SER	2.4
1	B	279	SER	2.4
1	B	261	ASP	2.3
1	B	282	CYS	2.3
1	B	250	GLN	2.3
1	A	490	ASP	2.3
1	A	421	GLU	2.3
1	A	311	GLY	2.2
1	A	258	SER	2.2
1	B	310	ASN	2.2
1	B	283	ILE	2.2
1	A	312	VAL	2.2
1	A	310	ASN	2.1
1	B	273	ILE	2.1
1	A	459	LYS	2.1
1	A	264	THR	2.1
1	A	485	TYR	2.1
1	A	486	GLY	2.0
1	B	361	ASP	2.0
1	A	281	TYR	2.0
1	B	311	GLY	2.0

## 6.2 Non-standard residues in protein, DNA, RNA chains [i](#)

There are no non-standard protein/DNA/RNA residues in this entry.

## 6.3 Carbohydrates [i](#)

There are no monosaccharides in this entry.

## 6.4 Ligands [i](#)

In the following table, the Atoms column lists the number of modelled atoms in the group and the number defined in the chemical component dictionary. The B-factors column lists the minimum, median, 95<sup>th</sup> percentile and maximum values of B factors of atoms in the group. The column labelled 'Q< 0.9' lists the number of atoms with occupancy less than 0.9.

Mol	Type	Chain	Res	Atoms	RSCC	RSR	B-factors(Å <sup>2</sup> )	Q<0.9
2	CXS	A	530	14/14	0.96	0.17	34,35,39,39	0
2	CXS	A	1	14/14	0.97	0.17	42,43,46,47	0

## 6.5 Other polymers [i](#)

There are no such residues in this entry.