



Full wwPDB X-ray Structure Validation Report ⓘ

Sep 24, 2023 – 09:05 AM EDT

PDB ID : 5TZ1
Title : Crystal structure of sterol 14-alpha demethylase (CYP51) from *Candida albicans* in complex with the tetrazole-based antifungal drug candidate VT1161 (VT1)
Authors : Hargrove, T.; Wawrzak, Z.; Lepesheva, G.
Deposited on : 2016-11-21
Resolution : 2.00 Å(reported)

This is a Full wwPDB X-ray Structure Validation Report for a publicly released PDB entry.

We welcome your comments at validation@mail.wwpdb.org

A user guide is available at

<https://www.wwpdb.org/validation/2017/XrayValidationReportHelp>

with specific help available everywhere you see the ⓘ symbol.

The types of validation reports are described at

<http://www.wwpdb.org/validation/2017/FAQs#types>.

The following versions of software and data (see [references ⓘ](#)) were used in the production of this report:

MolProbity : 4.02b-467
Mogul : 1.8.5 (274361), CSD as541be (2020)
Xtrriage (Phenix) : 1.13
EDS : 2.35.1
buster-report : 1.1.7 (2018)
Percentile statistics : 20191225.v01 (using entries in the PDB archive December 25th 2019)
Refmac : 5.8.0158
CCP4 : 7.0.044 (Gargrove)
Ideal geometry (proteins) : Engh & Huber (2001)
Ideal geometry (DNA, RNA) : Parkinson et al. (1996)
Validation Pipeline (wwPDB-VP) : 2.35.1

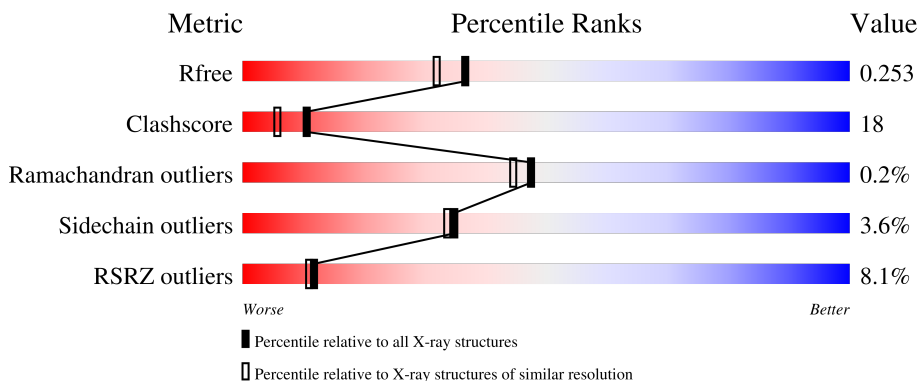
1 Overall quality at a glance

The following experimental techniques were used to determine the structure:

X-RAY DIFFRACTION



The reported resolution of this entry is 2.00 Å.

Percentile scores (ranging between 0-100) for global validation metrics of the entry are shown in the following graphic. The table shows the number of entries on which the scores are based.



Metric	Whole archive (#Entries)	Similar resolution (#Entries, resolution range(Å))
R_{free}	130704	8085 (2.00-2.00)
Clashscore	141614	9178 (2.00-2.00)
Ramachandran outliers	138981	9054 (2.00-2.00)
Sidechain outliers	138945	9053 (2.00-2.00)
RSRZ outliers	127900	7900 (2.00-2.00)

The table below summarises the geometric issues observed across the polymeric chains and their fit to the electron density. The red, orange, yellow and green segments of the lower bar indicate the fraction of residues that contain outliers for ≥ 3 , 2, 1 and 0 types of geometric quality criteria respectively. A grey segment represents the fraction of residues that are not modelled. The numeric value for each fraction is indicated below the corresponding segment, with a dot representing fractions $\leq 5\%$. The upper red bar (where present) indicates the fraction of residues that have poor fit to the electron density. The numeric value is given above the bar.

Mol	Chain	Length	Quality of chain
1	A	490	
1	B	490	

2 Entry composition

There are 4 unique types of molecules in this entry. The entry contains 8333 atoms, of which 0 are hydrogens and 0 are deuteriums.

In the tables below, the ZeroOcc column contains the number of atoms modelled with zero occupancy, the AltConf column contains the number of residues with at least one atom in alternate conformation and the Trace column contains the number of residues modelled with at most 2 atoms.

- Molecule 1 is a protein called Sterol 14-alpha demethylase.

Mol	Chain	Residues	Atoms					ZeroOcc	AltConf	Trace
			Total	C	N	O	S			
1	A	484	3928	2539	652	721	16	0	0	0
1	B	484	3929	2539	652	722	16	0	0	0

There are 22 discrepancies between the modelled and reference sequences:

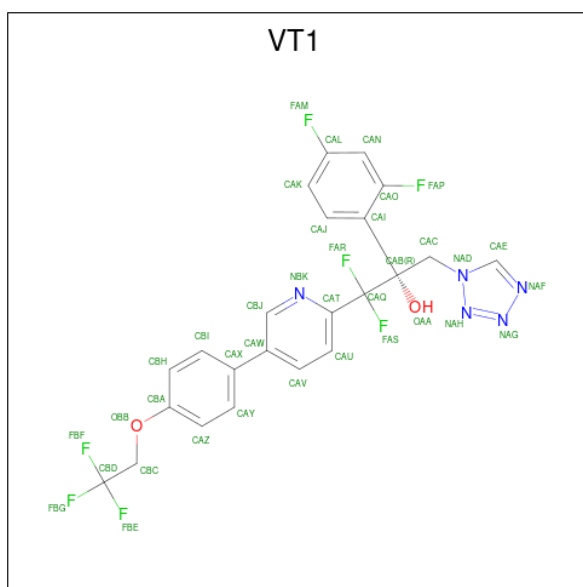
Chain	Residue	Modelled	Actual	Comment	Reference
A	43	MET	-	expression tag	UNP Q9P4W0
A	44	ALA	-	expression tag	UNP Q9P4W0
A	45	LYS	-	expression tag	UNP Q9P4W0
A	46	LYS	-	expression tag	UNP Q9P4W0
A	47	THR	-	expression tag	UNP Q9P4W0
A	48	PRO	ALA	engineered mutation	UNP Q9P4W0
A	263	LEU	SER	engineered mutation	UNP Q9P4W0
A	529	HIS	-	expression tag	UNP Q9P4W0
A	530	HIS	-	expression tag	UNP Q9P4W0
A	531	HIS	-	expression tag	UNP Q9P4W0
A	532	HIS	-	expression tag	UNP Q9P4W0
B	43	MET	-	expression tag	UNP Q9P4W0
B	44	ALA	-	expression tag	UNP Q9P4W0
B	45	LYS	-	expression tag	UNP Q9P4W0
B	46	LYS	-	expression tag	UNP Q9P4W0
B	47	THR	-	expression tag	UNP Q9P4W0
B	48	PRO	ALA	engineered mutation	UNP Q9P4W0
B	263	LEU	SER	engineered mutation	UNP Q9P4W0
B	529	HIS	-	expression tag	UNP Q9P4W0
B	530	HIS	-	expression tag	UNP Q9P4W0
B	531	HIS	-	expression tag	UNP Q9P4W0
B	532	HIS	-	expression tag	UNP Q9P4W0

- Molecule 2 is PROTOPORPHYRIN IX CONTAINING FE (three-letter code: HEM) (formula: C₃₄H₃₂FeN₄O₄).



Mol	Chain	Residues	Atoms				ZeroOcc	AltConf	
2	A	1	Total	C	Fe	N	O	0	0
			43	34	1	4	4		
2	B	1	Total	C	Fe	N	O	0	0
			43	34	1	4	4		

- Molecule 3 is (R)-2-(2,4-Difluorophenyl)-1,1-difluoro-3-(1H-tetrazol-1-yl)-1-(5-(4-(2,2,2-trifluoroethoxy)phenyl)pyridin-2-yl)propan-2-ol (three-letter code: VT1) (formula: $C_{23}H_{16}F_7N_5O_2$).



Mol	Chain	Residues	Atoms				ZeroOcc	AltConf	
3	A	1	Total	C	F	N	O	0	0
			37	23	7	5	2		

Continued on next page...

Continued from previous page...

Mol	Chain	Residues	Atoms					ZeroOcc	AltConf
			Total	C	F	N	O		
3	B	1	37	23	7	5	2	0	0

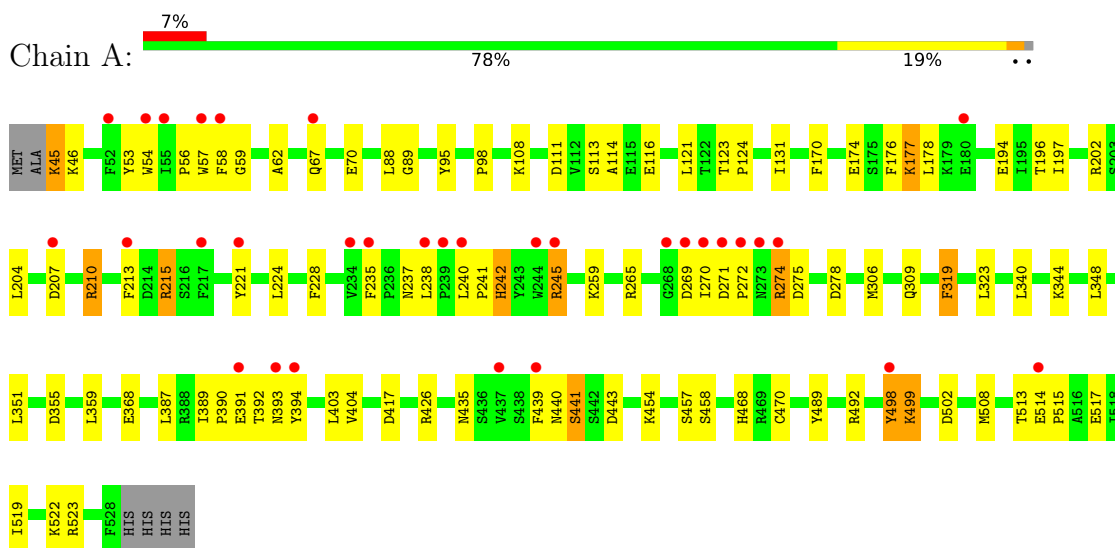
- Molecule 4 is water.

Mol	Chain	Residues	Atoms		ZeroOcc	AltConf
4	A	143	Total	O	0	0
			143	143		
4	B	173	Total	O	0	0
			173	173		

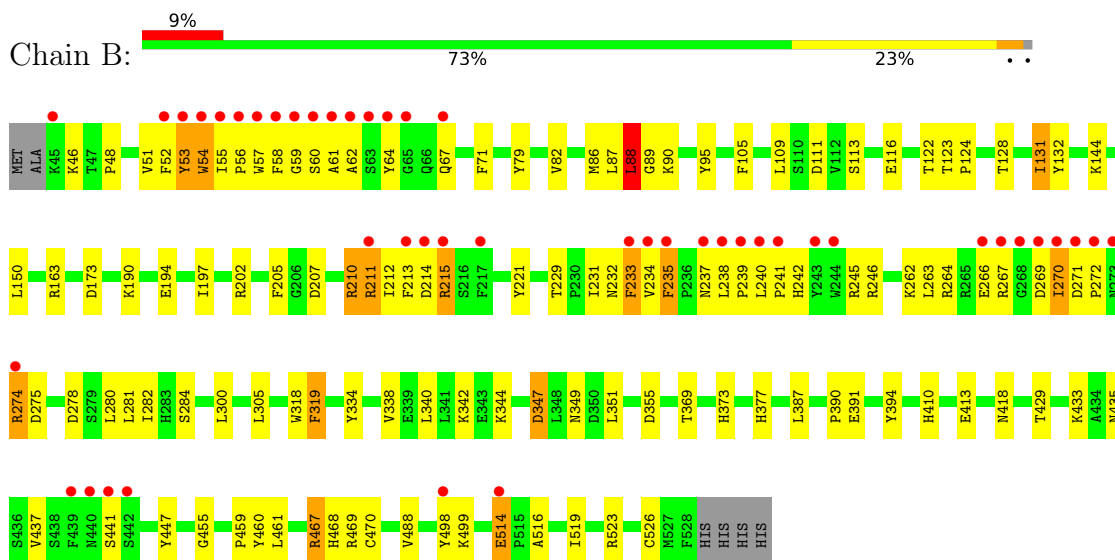
3 Residue-property plots [i](#)

These plots are drawn for all protein, RNA, DNA and oligosaccharide chains in the entry. The first graphic for a chain summarises the proportions of the various outlier classes displayed in the second graphic. The second graphic shows the sequence view annotated by issues in geometry and electron density. Residues are color-coded according to the number of geometric quality criteria for which they contain at least one outlier: green = 0, yellow = 1, orange = 2 and red = 3 or more. A red dot above a residue indicates a poor fit to the electron density ($RSRZ > 2$). Stretches of 2 or more consecutive residues without any outlier are shown as a green connector. Residues present in the sample, but not in the model, are shown in grey.

- Molecule 1: Sterol 14-alpha demethylase



- Molecule 1: Sterol 14-alpha demethylase



4 Data and refinement statistics

Property	Value	Source
Space group	C 1 2 1	Depositor
Cell constants a, b, c, α , β , γ	177.64Å 71.44Å 79.19Å 90.00° 96.63° 90.00°	Depositor
Resolution (Å)	49.61 – 2.00 49.61 – 2.00	Depositor EDS
% Data completeness (in resolution range)	98.6 (49.61-2.00) 98.6 (49.61-2.00)	Depositor EDS
R_{merge}	0.07	Depositor
R_{sym}	(Not available)	Depositor
$\langle I/\sigma(I) \rangle$ ¹	2.06 (at 2.00Å)	Xtrriage
Refinement program	REFMAC 5.8.0155	Depositor
R, R_{free}	0.218 , 0.224 0.231 , 0.253	Depositor DCC
R_{free} test set	3269 reflections (4.97%)	wwPDB-VP
Wilson B-factor (Å ²)	29.4	Xtrriage
Anisotropy	0.259	Xtrriage
Bulk solvent k_{sol} (e/Å ³), B_{sol} (Å ²)	0.37 , 57.9	EDS
L-test for twinning ²	$\langle L \rangle = 0.48$, $\langle L^2 \rangle = 0.31$	Xtrriage
Estimated twinning fraction	No twinning to report.	Xtrriage
F_o, F_c correlation	0.94	EDS
Total number of atoms	8333	wwPDB-VP
Average B, all atoms (Å ²)	42.0	wwPDB-VP

Xtrriage's analysis on translational NCS is as follows: *The largest off-origin peak in the Patterson function is 9.79% of the height of the origin peak. No significant pseudotranslation is detected.*

¹Intensities estimated from amplitudes.

²Theoretical values of $\langle |L| \rangle$, $\langle L^2 \rangle$ for acentric reflections are 0.5, 0.333 respectively for untwinned datasets, and 0.375, 0.2 for perfectly twinned datasets.

5 Model quality [i](#)

5.1 Standard geometry [i](#)

Bond lengths and bond angles in the following residue types are not validated in this section: VT1, HEM

The Z score for a bond length (or angle) is the number of standard deviations the observed value is removed from the expected value. A bond length (or angle) with $|Z| > 5$ is considered an outlier worth inspection. RMSZ is the root-mean-square of all Z scores of the bond lengths (or angles).

Mol	Chain	Bond lengths		Bond angles	
		RMSZ	# Z >5	RMSZ	# Z >5
1	A	0.40	0/4039	0.55	0/5474
1	B	0.44	0/4040	0.64	4/5475 (0.1%)
All	All	0.42	0/8079	0.60	4/10949 (0.0%)

Chiral center outliers are detected by calculating the chiral volume of a chiral center and verifying if the center is modelled as a planar moiety or with the opposite hand. A planarity outlier is detected by checking planarity of atoms in a peptide group, atoms in a mainchain group or atoms of a sidechain that are expected to be planar.

Mol	Chain	#Chirality outliers	#Planarity outliers
1	B	0	4

There are no bond length outliers.

All (4) bond angle outliers are listed below:

Mol	Chain	Res	Type	Atoms	Z	Observed(°)	Ideal(°)
1	B	88	LEU	CA-CB-CG	9.81	137.88	115.30
1	B	54	TRP	N-CA-C	6.67	129.02	111.00
1	B	270	ILE	N-CA-C	-5.85	95.21	111.00
1	B	514	GLU	N-CA-C	5.03	124.59	111.00

There are no chirality outliers.

All (4) planarity outliers are listed below:

Mol	Chain	Res	Type	Group
1	B	150	LEU	Mainchain
1	B	233	PHE	Sidechain
1	B	319	PHE	Sidechain
1	B	347	ASP	Mainchain

5.2 Too-close contacts

In the following table, the Non-H and H(model) columns list the number of non-hydrogen atoms and hydrogen atoms in the chain respectively. The H(added) column lists the number of hydrogen atoms added and optimized by MolProbity. The Clashes column lists the number of clashes within the asymmetric unit, whereas Symm-Clashes lists symmetry-related clashes.

Mol	Chain	Non-H	H(model)	H(added)	Clashes	Symm-Clashes
1	A	3928	0	3861	120	0
1	B	3929	0	3865	170	0
2	A	43	0	30	3	0
2	B	43	0	30	8	0
3	A	37	0	16	1	0
3	B	37	0	16	7	0
4	A	143	0	0	2	1
4	B	173	0	0	7	2
All	All	8333	0	7818	293	2

The all-atom clashscore is defined as the number of clashes found per 1000 atoms (including hydrogen atoms). The all-atom clashscore for this structure is 18.

All (293) close contacts within the same asymmetric unit are listed below, sorted by their clash magnitude.

Atom-1	Atom-2	Interatomic distance (Å)	Clash overlap (Å)
1:B:235:PHE:CD1	1:B:238:LEU:HD11	1.68	1.27
1:B:270:ILE:HD11	1:B:281:LEU:HD13	1.20	1.15
1:B:235:PHE:CG	1:B:238:LEU:HD11	1.81	1.14
1:B:55:ILE:O	1:B:58:PHE:HB3	1.54	1.07
1:B:52:PHE:CD1	1:B:54:TRP:HZ2	1.72	1.06
1:B:60:SER:O	1:B:64:TYR:HB3	1.59	1.02
1:A:270:ILE:N	1:A:274:ARG:HH12	1.60	1.00
1:A:274:ARG:HD3	1:A:278:ASP:OD2	1.61	1.00
1:B:87:LEU:HD23	1:B:88:LEU:HD12	1.42	0.99
1:B:211:ARG:HG3	1:B:211:ARG:HH11	1.25	0.97
1:B:52:PHE:CD1	1:B:54:TRP:CZ2	2.54	0.95
1:B:235:PHE:CE1	1:B:238:LEU:HD11	2.04	0.93
1:B:271:ASP:HB3	1:B:272:PRO:HD3	1.48	0.93
1:B:235:PHE:CG	1:B:238:LEU:CD1	2.53	0.92
1:B:235:PHE:CD2	1:B:238:LEU:CD1	2.54	0.91
1:B:270:ILE:HD11	1:B:281:LEU:CD1	2.00	0.90
1:B:207:ASP:HB3	1:B:211:ARG:HH12	1.36	0.90
1:A:271:ASP:OD1	1:A:272:PRO:CD	2.22	0.87
1:B:269:ASP:OD1	1:B:271:ASP:HB2	1.77	0.84

Continued on next page...

Continued from previous page...

Atom-1	Atom-2	Interatomic distance (Å)	Clash overlap (Å)
1:B:240:LEU:HD13	1:B:242:HIS:ND1	1.92	0.84
1:A:271:ASP:CG	1:A:272:PRO:HD2	1.98	0.84
1:B:131:ILE:HG22	1:B:132:TYR:N	1.93	0.83
2:A:601:HEM:HMB2	2:A:601:HEM:HBB2	1.60	0.83
1:A:271:ASP:O	1:A:274:ARG:HG3	1.78	0.83
1:A:54:TRP:CD1	1:B:54:TRP:HE3	1.96	0.82
1:B:131:ILE:HG22	1:B:132:TYR:H	1.43	0.82
1:A:269:ASP:HA	1:A:274:ARG:NH1	1.95	0.81
1:A:121:LEU:HD11	1:A:508:MET:CE	2.11	0.81
1:A:270:ILE:HG22	1:A:274:ARG:CZ	2.11	0.81
1:B:235:PHE:CE2	1:B:238:LEU:HD13	2.16	0.81
1:A:269:ASP:CA	1:A:274:ARG:HH12	1.94	0.80
1:A:269:ASP:C	1:A:274:ARG:HH12	1.84	0.80
1:A:270:ILE:N	1:A:274:ARG:NH1	2.28	0.80
1:A:271:ASP:OD1	1:A:272:PRO:HD2	1.82	0.79
1:B:52:PHE:HD2	1:B:71:PHE:HE1	1.30	0.79
1:B:87:LEU:O	1:B:88:LEU:HD13	1.82	0.79
1:B:334:TYR:CE1	1:B:523:ARG:HD2	2.16	0.79
1:B:52:PHE:HD2	1:B:71:PHE:CE1	2.02	0.78
1:A:113:SER:OG	1:A:116:GLU:HG2	1.84	0.77
1:A:269:ASP:HA	1:A:274:ARG:HH12	1.48	0.77
1:B:344:LYS:HE3	1:B:355:ASP:OD2	1.84	0.77
1:B:52:PHE:HD1	1:B:54:TRP:HZ2	1.29	0.77
1:B:271:ASP:HB3	1:B:272:PRO:CD	2.14	0.77
1:B:51:VAL:O	1:B:52:PHE:CD1	2.37	0.77
1:A:271:ASP:OD1	1:A:272:PRO:HD3	1.84	0.76
1:A:265:ARG:NH1	4:A:701:HOH:O	1.96	0.76
1:B:235:PHE:CD2	1:B:238:LEU:HD11	2.20	0.76
1:B:232:ASN:HA	1:B:234:VAL:O	1.85	0.75
1:B:51:VAL:O	1:B:52:PHE:HD1	1.70	0.75
1:B:514:GLU:HB2	4:B:726:HOH:O	1.87	0.75
1:A:54:TRP:HD1	1:B:54:TRP:HE3	1.35	0.74
1:B:498:TYR:C	1:B:499:LYS:HD2	2.09	0.73
1:B:52:PHE:HD1	1:B:54:TRP:CZ2	2.03	0.73
1:B:235:PHE:CE2	1:B:238:LEU:CD1	2.72	0.71
1:A:202:ARG:NE	1:A:207:ASP:OD1	2.23	0.71
1:A:111:ASP:HB3	1:A:387:LEU:HD21	1.73	0.70
1:B:57:TRP:O	1:B:88:LEU:CB	2.38	0.70
1:B:58:PHE:CE1	1:B:61:ALA:HB3	2.27	0.70
1:A:274:ARG:CD	1:A:274:ARG:H	2.04	0.70
1:B:270:ILE:CD1	1:B:281:LEU:HD13	2.12	0.70

Continued on next page...

Continued from previous page...

Atom-1	Atom-2	Interatomic distance (Å)	Clash overlap (Å)
1:B:57:TRP:HA	1:B:88:LEU:HA	1.75	0.69
1:A:176:PHE:HB3	1:A:178:LEU:HD13	1.75	0.69
1:A:54:TRP:NE1	1:B:54:TRP:O	2.25	0.69
1:A:274:ARG:HD3	1:A:274:ARG:H	1.58	0.69
1:A:271:ASP:O	1:A:274:ARG:CG	2.41	0.68
1:B:232:ASN:C	1:B:234:VAL:H	1.93	0.68
1:A:274:ARG:CD	1:A:278:ASP:OD2	2.39	0.68
1:B:274:ARG:HD2	1:B:278:ASP:OD2	1.94	0.68
1:A:270:ILE:H	1:A:274:ARG:NH1	1.91	0.67
1:B:57:TRP:C	1:B:88:LEU:HA	2.16	0.67
1:B:207:ASP:HB3	1:B:211:ARG:NH1	2.08	0.67
1:B:237:ASN:O	1:B:238:LEU:HG	1.94	0.66
1:B:211:ARG:HH11	1:B:211:ARG:CG	2.06	0.66
1:B:334:TYR:CD1	1:B:523:ARG:HD2	2.31	0.66
1:B:202:ARG:HD3	1:B:210:ARG:HD3	1.77	0.65
1:B:87:LEU:O	1:B:88:LEU:CD1	2.45	0.65
2:B:601:HEM:HMC2	2:B:601:HEM:HBC2	1.79	0.64
1:A:241:PRO:O	1:A:245:ARG:HD3	1.96	0.64
1:B:87:LEU:CD2	1:B:88:LEU:HD12	2.24	0.64
1:A:389:ILE:O	1:A:392:THR:OG1	2.12	0.64
1:B:340:LEU:HD23	1:B:340:LEU:C	2.18	0.63
1:A:207:ASP:OD2	1:A:270:ILE:HD11	1.99	0.63
1:A:242:HIS:HA	1:A:245:ARG:NH1	2.13	0.63
1:B:90:LYS:HE2	1:B:233:PHE:CE1	2.33	0.63
1:A:215:ARG:CD	1:A:215:ARG:H	2.12	0.62
1:A:54:TRP:CD1	1:B:54:TRP:CE3	2.85	0.62
1:A:271:ASP:O	1:A:274:ARG:HD2	1.99	0.62
1:B:57:TRP:O	1:B:88:LEU:HB2	1.99	0.62
1:A:58:PHE:HE2	1:A:62:ALA:HB2	1.64	0.61
1:B:57:TRP:CA	1:B:88:LEU:HA	2.30	0.61
1:B:57:TRP:O	1:B:88:LEU:HB3	2.00	0.61
1:B:55:ILE:O	1:B:58:PHE:CB	2.41	0.61
1:B:52:PHE:CD2	1:B:71:PHE:HE1	2.17	0.61
1:B:240:LEU:CD1	1:B:242:HIS:ND1	2.63	0.61
1:B:270:ILE:HG21	1:B:282:ILE:HD11	1.82	0.61
1:B:235:PHE:CE1	1:B:238:LEU:CD1	2.82	0.60
1:A:108:LYS:HE3	1:A:111:ASP:OD2	2.01	0.60
1:B:88:LEU:HD22	1:B:89:GLY:H	1.67	0.60
2:B:601:HEM:HMB2	2:B:601:HEM:HBB2	1.82	0.60
1:A:441:SER:HB3	1:A:443:ASP:OD1	2.01	0.60
1:B:215:ARG:O	1:B:215:ARG:HG3	2.00	0.60

Continued on next page...

Continued from previous page...

Atom-1	Atom-2	Interatomic distance (Å)	Clash overlap (Å)
1:B:235:PHE:CD2	1:B:238:LEU:HD13	2.34	0.60
1:A:67:GLN:CG	1:A:70:GLU:HB2	2.32	0.59
1:A:121:LEU:HD11	1:A:508:MET:HE1	1.83	0.59
1:A:213:PHE:CE2	1:A:221:TYR:HE2	2.21	0.59
1:B:211:ARG:HG3	1:B:211:ARG:NH1	2.07	0.59
3:B:602:VT1:HAC2	3:B:602:VT1:FAP	1.91	0.59
1:B:235:PHE:CZ	1:B:238:LEU:CD1	2.86	0.59
1:A:237:ASN:O	1:A:238:LEU:HD22	2.02	0.58
2:B:601:HEM:HBC2	2:B:601:HEM:CMC	2.34	0.58
1:A:54:TRP:HD1	1:B:54:TRP:CE3	2.19	0.58
1:B:278:ASP:O	1:B:282:ILE:HD12	2.04	0.58
1:B:231:ILE:O	1:B:234:VAL:O	2.22	0.58
1:B:270:ILE:CD1	1:B:281:LEU:CD1	2.77	0.57
1:B:111:ASP:HB3	1:B:387:LEU:HD21	1.85	0.57
1:B:271:ASP:CB	1:B:272:PRO:HD3	2.27	0.57
1:B:113:SER:OG	1:B:116:GLU:HG2	2.04	0.57
1:A:340:LEU:C	1:A:340:LEU:HD23	2.25	0.57
1:B:514:GLU:CB	4:B:726:HOH:O	2.50	0.57
1:B:272:PRO:HB2	1:B:274:ARG:HG2	1.86	0.57
1:A:270:ILE:H	1:A:274:ARG:HH12	1.42	0.57
1:B:526:CYS:N	4:B:703:HOH:O	2.38	0.57
1:B:235:PHE:CE1	1:B:238:LEU:HD21	2.40	0.56
1:B:51:VAL:HG11	1:B:79:TYR:CD2	2.40	0.56
1:A:403:LEU:C	1:A:403:LEU:HD23	2.26	0.56
1:B:232:ASN:C	1:B:234:VAL:N	2.59	0.56
1:B:213:PHE:HD1	1:B:213:PHE:O	1.89	0.56
1:B:338:VAL:O	1:B:342:LYS:HG2	2.06	0.56
1:B:347:ASP:OD1	1:B:349:ASN:HB2	2.06	0.56
1:B:514:GLU:O	1:B:516:ALA:N	2.40	0.56
1:A:514:GLU:HB3	1:A:515:PRO:HD3	1.88	0.55
1:A:57:TRP:CH2	1:A:89:GLY:HA3	2.42	0.55
1:A:492:ARG:HG3	1:A:523:ARG:HH11	1.71	0.55
1:B:523:ARG:HB2	4:B:703:HOH:O	2.05	0.55
1:A:235:PHE:HB3	1:A:238:LEU:HD23	1.89	0.55
1:B:58:PHE:HE2	1:B:62:ALA:HB2	1.70	0.55
1:A:270:ILE:H	1:A:274:ARG:NH2	2.05	0.55
1:B:429:THR:O	1:B:433:LYS:HG3	2.07	0.55
1:A:270:ILE:H	1:A:274:ARG:CZ	2.20	0.54
1:B:235:PHE:CZ	1:B:238:LEU:HD11	2.42	0.54
1:A:53:TYR:CD2	1:A:59:GLY:HA2	2.42	0.54
1:A:54:TRP:HE1	1:B:54:TRP:HA	1.73	0.54

Continued on next page...

Continued from previous page...

Atom-1	Atom-2	Interatomic distance (Å)	Clash overlap (Å)
1:B:122:THR:HB	4:B:842:HOH:O	2.08	0.54
1:B:53:TYR:HB3	1:B:86:MET:HB2	1.89	0.54
1:A:213:PHE:CE2	1:A:221:TYR:CE2	2.95	0.54
1:B:131:ILE:CG2	1:B:132:TYR:N	2.62	0.53
1:B:53:TYR:N	1:B:53:TYR:CD1	2.76	0.53
1:A:498:TYR:CD1	1:A:499:LYS:HD2	2.43	0.53
2:A:601:HEM:HBB2	2:A:601:HEM:CMB	2.33	0.53
1:A:271:ASP:O	1:A:274:ARG:CD	2.56	0.53
1:B:280:LEU:O	1:B:284:SER:HB3	2.08	0.52
1:A:204:LEU:O	1:A:275:ASP:HB2	2.09	0.52
1:A:241:PRO:O	1:A:245:ARG:CD	2.57	0.52
1:B:205:PHE:O	4:B:701:HOH:O	2.19	0.52
1:A:67:GLN:HG3	1:A:70:GLU:HB2	1.90	0.52
1:B:237:ASN:HD22	1:B:246:ARG:HH22	1.55	0.52
1:B:52:PHE:CD2	1:B:71:PHE:CE1	2.92	0.52
1:A:228:PHE:CE1	1:A:508:MET:HE2	2.44	0.52
1:B:55:ILE:CG2	1:B:56:PRO:HD2	2.40	0.52
1:B:131:ILE:CG2	1:B:132:TYR:H	2.09	0.52
1:A:498:TYR:OH	1:B:413:GLU:OE1	2.28	0.52
1:A:242:HIS:HA	1:A:245:ARG:CZ	2.40	0.51
1:A:45:LYS:HG3	1:A:393:ASN:O	2.10	0.51
1:A:67:GLN:HG2	1:A:70:GLU:CD	2.30	0.51
1:A:170:PHE:HB3	1:A:178:LEU:HD22	1.92	0.51
1:A:121:LEU:HD13	1:A:121:LEU:O	2.11	0.51
1:A:390:PRO:O	1:A:391:GLU:HB2	2.11	0.51
1:B:194:GLU:O	1:B:197:ILE:HG22	2.12	0.50
1:A:202:ARG:CD	1:A:210:ARG:HD2	2.41	0.50
1:B:488:VAL:O	1:B:523:ARG:NH1	2.44	0.50
1:A:499:LYS:HE3	1:B:413:GLU:OE2	2.12	0.50
1:A:523:ARG:NH1	4:A:710:HOH:O	2.45	0.50
1:B:270:ILE:HG21	1:B:282:ILE:CD1	2.42	0.50
1:A:215:ARG:H	1:A:215:ARG:HD3	1.77	0.49
1:A:499:LYS:N	1:A:499:LYS:CD	2.74	0.49
1:B:56:PRO:C	1:B:58:PHE:H	2.14	0.49
1:B:123:THR:N	1:B:124:PRO:CD	2.74	0.49
1:A:470:CYS:HA	2:A:601:HEM:C4D	2.47	0.49
1:A:502:ASP:O	1:A:513:THR:HG23	2.12	0.49
1:B:262:LYS:O	1:B:266:GLU:HB2	2.13	0.49
1:B:468:HIS:HD2	2:B:601:HEM:O2D	1.95	0.49
1:A:194:GLU:O	1:A:197:ILE:HG22	2.12	0.49
1:A:270:ILE:H	1:A:274:ARG:HH22	1.60	0.49

Continued on next page...

Continued from previous page...

Atom-1	Atom-2	Interatomic distance (Å)	Clash overlap (Å)
1:B:338:VAL:HG13	1:B:342:LYS:CE	2.42	0.49
1:A:271:ASP:CG	1:A:272:PRO:CD	2.73	0.49
1:B:267:ARG:NH2	1:B:274:ARG:NH2	2.60	0.49
1:B:338:VAL:HG13	1:B:342:LYS:HE2	1.94	0.49
3:A:602:VT1:FAP	3:A:602:VT1:HAC2	2.02	0.48
1:B:232:ASN:CA	1:B:234:VAL:O	2.57	0.48
1:A:54:TRP:O	1:A:56:PRO:HD3	2.13	0.48
1:A:245:ARG:HH11	1:A:245:ARG:HB2	1.77	0.48
1:B:435:ASN:O	1:B:459:PRO:HD2	2.14	0.48
1:A:270:ILE:CG2	1:A:274:ARG:HG2	2.44	0.48
1:B:235:PHE:CZ	1:B:238:LEU:HD13	2.49	0.48
1:A:174:GLU:HA	1:A:177:LYS:HD3	1.96	0.47
1:B:59:GLY:HA3	1:B:87:LEU:HA	1.95	0.47
1:A:196:THR:HG22	1:A:309:GLN:HG2	1.96	0.47
1:B:318:TRP:CE3	1:B:373:HIS:CE1	3.02	0.47
1:A:417:ASP:O	1:A:426:ARG:NH2	2.38	0.47
1:B:58:PHE:CZ	1:B:61:ALA:HB3	2.50	0.47
1:A:57:TRP:CZ3	1:A:89:GLY:HA3	2.49	0.47
1:B:51:VAL:HG11	1:B:79:TYR:CE2	2.50	0.47
1:B:202:ARG:CD	1:B:210:ARG:HD3	2.42	0.47
1:A:123:THR:N	1:A:124:PRO:CD	2.78	0.46
1:A:492:ARG:HG3	1:A:523:ARG:NH1	2.29	0.46
1:B:144:LYS:HB3	1:B:144:LYS:HE3	1.84	0.46
1:A:121:LEU:HD11	1:A:508:MET:HE2	1.90	0.46
1:B:498:TYR:O	1:B:499:LYS:HD2	2.14	0.46
1:B:213:PHE:O	1:B:213:PHE:CD1	2.67	0.46
1:A:319:PHE:O	1:A:323:LEU:HG	2.16	0.46
1:B:173:ASP:OD2	1:B:190:LYS:NZ	2.47	0.46
1:B:390:PRO:O	1:B:391:GLU:HB2	2.16	0.46
1:A:98:PRO:HB3	1:A:457:SER:O	2.15	0.46
1:B:238:LEU:HA	1:B:239:PRO:HD3	1.77	0.45
1:A:45:LYS:CD	1:A:393:ASN:HB3	2.46	0.45
1:B:48:PRO:HB3	1:B:82:VAL:HG12	1.98	0.45
1:A:271:ASP:CB	1:A:272:PRO:HD2	2.46	0.45
1:A:340:LEU:HD23	1:A:340:LEU:O	2.17	0.45
1:B:274:ARG:H	1:B:274:ARG:HG3	1.49	0.45
1:B:410:HIS:CD2	1:B:460:TYR:HA	2.51	0.45
1:A:240:LEU:HD12	1:A:242:HIS:H	1.82	0.45
1:A:45:LYS:CG	1:A:393:ASN:HB3	2.46	0.45
1:A:368:GLU:OE2	1:A:426:ARG:HD3	2.16	0.45
1:A:121:LEU:HD13	1:A:121:LEU:C	2.37	0.45

Continued on next page...

Continued from previous page...

Atom-1	Atom-2	Interatomic distance (Å)	Clash overlap (Å)
1:A:240:LEU:CD1	1:A:242:HIS:HB3	2.48	0.45
1:B:221:TYR:OH	1:B:305:LEU:HD23	2.17	0.45
1:B:90:LYS:CD	1:B:233:PHE:CZ	3.01	0.44
1:B:264:ARG:HD3	1:B:278:ASP:OD1	2.17	0.44
1:B:274:ARG:CD	1:B:278:ASP:OD2	2.63	0.44
1:A:45:LYS:HD3	1:A:393:ASN:HB3	1.99	0.44
1:A:178:LEU:O	1:A:522:LYS:NZ	2.44	0.44
1:B:469:ARG:HG2	1:B:470:CYS:N	2.31	0.44
1:A:435:ASN:O	1:A:458:SER:OG	2.35	0.44
1:B:55:ILE:HG23	1:B:56:PRO:HD2	2.00	0.44
1:B:235:PHE:CE2	1:B:238:LEU:HD11	2.48	0.44
1:B:319:PHE:HB3	1:B:369:THR:OG1	2.17	0.44
1:B:499:LYS:HD2	1:B:499:LYS:N	2.33	0.44
1:A:67:GLN:HG2	1:A:70:GLU:CG	2.47	0.44
1:B:377:HIS:NE2	3:B:602:VT1:OBB	2.51	0.44
3:B:602:VT1:FAP	3:B:602:VT1:CAC	2.55	0.44
1:A:202:ARG:HD3	1:A:210:ARG:HD2	1.98	0.44
2:B:601:HEM:HBB2	2:B:601:HEM:CMB	2.48	0.44
1:B:109:LEU:HD23	1:B:109:LEU:HA	1.87	0.44
1:A:113:SER:CB	1:A:116:GLU:HG2	2.47	0.44
1:B:111:ASP:CB	1:B:387:LEU:HD21	2.48	0.43
1:A:340:LEU:HD13	1:A:359:LEU:HD21	1.99	0.43
1:A:498:TYR:HH	1:B:413:GLU:CD	2.22	0.43
1:B:128:THR:HG22	4:B:833:HOH:O	2.18	0.43
1:B:264:ARG:HH12	1:B:275:ASP:CG	2.21	0.43
1:A:228:PHE:CZ	1:A:508:MET:HE2	2.54	0.43
1:B:377:HIS:CE1	3:B:602:VT1:OBB	2.71	0.43
1:B:470:CYS:HA	2:B:601:HEM:C4D	2.53	0.43
1:B:64:TYR:CE2	1:B:87:LEU:HD12	2.53	0.43
1:B:55:ILE:CG2	1:B:56:PRO:CD	2.97	0.43
1:A:46:LYS:O	1:A:394:TYR:HA	2.18	0.43
1:A:319:PHE:CD1	1:A:319:PHE:C	2.92	0.43
1:A:351:LEU:C	1:A:351:LEU:HD23	2.39	0.43
1:A:498:TYR:CZ	1:B:418:ASN:N	2.86	0.43
1:B:519:ILE:N	1:B:519:ILE:HD12	2.34	0.43
2:B:601:HEM:HMC2	2:B:601:HEM:CBC	2.47	0.43
1:B:334:TYR:CE1	1:B:523:ARG:CD	2.95	0.43
1:B:270:ILE:CG2	1:B:282:ILE:HD11	2.49	0.42
1:A:499:LYS:H	1:A:499:LYS:HD3	1.84	0.42
1:B:105:PHE:CE2	1:B:461:LEU:HD23	2.54	0.42
1:B:215:ARG:HH11	1:B:215:ARG:CG	2.32	0.42

Continued on next page...

Continued from previous page...

Atom-1	Atom-2	Interatomic distance (Å)	Clash overlap (Å)
3:B:602:VT1:HBC2	3:B:602:VT1:HAZ	1.64	0.42
1:A:224:LEU:HG	1:A:306:MET:HE3	2.02	0.42
1:B:46:LYS:O	1:B:394:TYR:HA	2.20	0.42
1:B:441:SER:HB2	1:B:455:GLY:CA	2.50	0.42
1:B:64:TYR:HE2	1:B:87:LEU:CD1	2.33	0.42
1:B:163:ARG:NH1	1:B:351:LEU:HB3	2.35	0.42
1:A:57:TRP:CZ2	1:A:88:LEU:O	2.73	0.42
1:A:348:LEU:HB2	1:A:489:TYR:CE2	2.55	0.42
1:A:403:LEU:HD23	1:A:404:VAL:N	2.35	0.41
1:A:519:ILE:HD12	1:A:519:ILE:N	2.35	0.41
1:B:55:ILE:HG23	1:B:56:PRO:CD	2.50	0.41
1:B:342:LYS:HA	1:B:342:LYS:HD3	1.77	0.41
2:B:601:HEM:HBD1	3:B:602:VT1:HAK	2.01	0.41
1:B:113:SER:CB	1:B:116:GLU:HG2	2.51	0.41
1:A:259:LYS:HE2	1:A:259:LYS:HB2	1.84	0.41
1:B:116:GLU:OE1	1:B:116:GLU:HA	2.21	0.41
1:B:231:ILE:O	1:B:234:VAL:CG2	2.68	0.41
1:A:344:LYS:HE3	1:A:355:ASP:OD2	2.20	0.41
1:B:241:PRO:O	1:B:245:ARG:HG2	2.21	0.41
1:B:267:ARG:HH22	1:B:274:ARG:NH2	2.19	0.41
1:B:369:THR:O	1:B:373:HIS:N	2.46	0.41
1:B:447:TYR:CD2	1:B:467:ARG:HA	2.56	0.41
1:B:318:TRP:CZ3	1:B:373:HIS:CE1	3.09	0.41
1:A:443:ASP:OD2	1:A:454:LYS:HD3	2.21	0.41
1:B:56:PRO:C	1:B:58:PHE:N	2.74	0.41
3:B:602:VT1:NBK	3:B:602:VT1:HAC1	2.35	0.41
1:A:114:ALA:HB3	1:A:468:HIS:CE1	2.56	0.40
1:B:52:PHE:HA	1:B:54:TRP:CZ2	2.57	0.40

All (2) symmetry-related close contacts are listed below. The label for Atom-2 includes the symmetry operator and encoded unit-cell translations to be applied.

Atom-1	Atom-2	Interatomic distance (Å)	Clash overlap (Å)
4:B:859:HOH:O	4:B:859:HOH:O[2_656]	2.06	0.14
4:A:829:HOH:O	4:B:770:HOH:O[1_564]	2.11	0.09

5.3 Torsion angles [i](#)

5.3.1 Protein backbone [i](#)

In the following table, the Percentiles column shows the percent Ramachandran outliers of the chain as a percentile score with respect to all X-ray entries followed by that with respect to entries of similar resolution.

The Analysed column shows the number of residues for which the backbone conformation was analysed, and the total number of residues.

Mol	Chain	Analysed	Favoured	Allowed	Outliers	Percentiles	
1	A	482/490 (98%)	467 (97%)	14 (3%)	1 (0%)	47	44
1	B	482/490 (98%)	464 (96%)	17 (4%)	1 (0%)	47	44
All	All	964/980 (98%)	931 (97%)	31 (3%)	2 (0%)	47	44

All (2) Ramachandran outliers are listed below:

Mol	Chain	Res	Type
1	A	131	ILE
1	B	131	ILE

5.3.2 Protein sidechains [i](#)

In the following table, the Percentiles column shows the percent sidechain outliers of the chain as a percentile score with respect to all X-ray entries followed by that with respect to entries of similar resolution.

The Analysed column shows the number of residues for which the sidechain conformation was analysed, and the total number of residues.

Mol	Chain	Analysed	Rotameric	Outliers	Percentiles	
1	A	430/436 (99%)	415 (96%)	15 (4%)	36	35
1	B	431/436 (99%)	415 (96%)	16 (4%)	34	32
All	All	861/872 (99%)	830 (96%)	31 (4%)	35	34

All (31) residues with a non-rotameric sidechain are listed below:

Mol	Chain	Res	Type
1	A	45	LYS
1	A	95	TYR
1	A	177	LYS
1	A	210	ARG

Continued on next page...

Continued from previous page...

Mol	Chain	Res	Type
1	A	215	ARG
1	A	242	HIS
1	A	245	ARG
1	A	274	ARG
1	A	319	PHE
1	A	439	PHE
1	A	440	ASN
1	A	441	SER
1	A	498	TYR
1	A	499	LYS
1	A	517	GLU
1	B	53	TYR
1	B	67	GLN
1	B	88	LEU
1	B	95	TYR
1	B	210	ARG
1	B	211	ARG
1	B	212	ILE
1	B	214	ASP
1	B	215	ARG
1	B	229	THR
1	B	235	PHE
1	B	263	LEU
1	B	274	ARG
1	B	300	LEU
1	B	437	VAL
1	B	467	ARG

Sometimes sidechains can be flipped to improve hydrogen bonding and reduce clashes. All (7) such sidechains are listed below:

Mol	Chain	Res	Type
1	A	400	HIS
1	A	440	ASN
1	B	237	ASN
1	B	363	ASN
1	B	400	HIS
1	B	440	ASN
1	B	468	HIS

5.3.3 RNA [i](#)

There are no RNA molecules in this entry.

5.4 Non-standard residues in protein, DNA, RNA chains [i](#)

There are no non-standard protein/DNA/RNA residues in this entry.

5.5 Carbohydrates [i](#)

There are no monosaccharides in this entry.

5.6 Ligand geometry [i](#)

4 ligands are modelled in this entry.

In the following table, the Counts columns list the number of bonds (or angles) for which Mogul statistics could be retrieved, the number of bonds (or angles) that are observed in the model and the number of bonds (or angles) that are defined in the Chemical Component Dictionary. The Link column lists molecule types, if any, to which the group is linked. The Z score for a bond length (or angle) is the number of standard deviations the observed value is removed from the expected value. A bond length (or angle) with $|Z| > 2$ is considered an outlier worth inspection. RMSZ is the root-mean-square of all Z scores of the bond lengths (or angles).

Mol	Type	Chain	Res	Link	Bond lengths			Bond angles		
					Counts	RMSZ	# Z > 2	Counts	RMSZ	# Z > 2
2	HEM	A	601	3,1	41,50,50	1.86	9 (21%)	45,82,82	1.67	11 (24%)
3	VT1	B	602	2	36,40,40	3.16	6 (16%)	46,60,60	1.53	10 (21%)
2	HEM	B	601	3,1	41,50,50	1.87	10 (24%)	45,82,82	1.83	13 (28%)
3	VT1	A	602	2	36,40,40	3.15	6 (16%)	46,60,60	1.51	10 (21%)

In the following table, the Chirals column lists the number of chiral outliers, the number of chiral centers analysed, the number of these observed in the model and the number defined in the Chemical Component Dictionary. Similar counts are reported in the Torsion and Rings columns. '-' means no outliers of that kind were identified.

Mol	Type	Chain	Res	Link	Chirals	Torsions	Rings
2	HEM	A	601	3,1	-	1/12/54/54	-
3	VT1	B	602	2	-	5/33/36/36	0/4/4/4
2	HEM	B	601	3,1	-	2/12/54/54	-
3	VT1	A	602	2	-	8/33/36/36	0/4/4/4

All (31) bond length outliers are listed below:

Mol	Chain	Res	Type	Atoms	Z	Observed(Å)	Ideal(Å)
3	B	602	VT1	CAB-CAI	-13.36	1.39	1.52
3	A	602	VT1	CAB-CAI	-13.27	1.39	1.52
3	A	602	VT1	NAH-NAD	-9.64	1.15	1.34
3	B	602	VT1	NAH-NAD	-9.54	1.16	1.34
3	B	602	VT1	NAF-NAG	-5.64	1.15	1.33
3	A	602	VT1	NAF-NAG	-5.60	1.15	1.33
3	B	602	VT1	NAH-NAG	-5.05	1.19	1.30
3	A	602	VT1	NAH-NAG	-5.03	1.19	1.30
2	A	601	HEM	C4D-ND	-4.95	1.31	1.40
2	B	601	HEM	C4D-ND	-4.66	1.32	1.40
2	B	601	HEM	C1B-NB	-4.50	1.32	1.40
2	B	601	HEM	C4B-NB	-4.18	1.30	1.38
2	A	601	HEM	C1B-NB	-3.88	1.33	1.40
2	A	601	HEM	C3C-C2C	-3.79	1.35	1.40
3	B	602	VT1	CAW-CAX	-3.77	1.39	1.49
3	A	602	VT1	CAW-CAX	-3.75	1.39	1.49
2	A	601	HEM	C4B-NB	-3.66	1.31	1.38
2	B	601	HEM	C1D-ND	-3.51	1.31	1.38
2	A	601	HEM	O2A-CGA	-3.16	1.20	1.30
2	B	601	HEM	O2D-CGD	-3.13	1.20	1.30
2	B	601	HEM	O2A-CGA	-2.95	1.20	1.30
3	A	602	VT1	CBJ-NBK	2.94	1.40	1.34
3	B	602	VT1	CBJ-NBK	2.94	1.40	1.34
2	A	601	HEM	O2D-CGD	-2.82	1.21	1.30
2	B	601	HEM	FE-NB	2.68	2.10	1.96
2	A	601	HEM	FE-NB	2.67	2.10	1.96
2	A	601	HEM	C1D-ND	-2.42	1.33	1.38
2	B	601	HEM	C3D-C2D	-2.32	1.31	1.36
2	B	601	HEM	C3C-C2C	-2.23	1.37	1.40
2	B	601	HEM	FE-ND	-2.20	1.86	1.96
2	A	601	HEM	C3B-C2B	-2.02	1.33	1.37

All (44) bond angle outliers are listed below:

Mol	Chain	Res	Type	Atoms	Z	Observed(°)	Ideal(°)
2	B	601	HEM	C1B-NB-C4B	4.69	109.92	105.07
2	B	601	HEM	CHC-C4B-NB	4.43	129.25	124.43
2	A	601	HEM	C1B-NB-C4B	3.83	109.03	105.07
2	A	601	HEM	CHC-C4B-NB	3.68	128.43	124.43
2	A	601	HEM	O2D-CGD-O1D	-3.48	114.62	123.30
3	A	602	VT1	CAO-CAN-CAL	3.43	120.22	116.62
3	B	602	VT1	CAN-CAO-CAI	-3.42	120.30	124.00

Continued on next page...

Continued from previous page...

Mol	Chain	Res	Type	Atoms	Z	Observed(°)	Ideal(°)
2	B	601	HEM	CHA-C4D-ND	3.40	128.58	124.38
3	A	602	VT1	CAN-CAO-CAI	-3.39	120.32	124.00
2	B	601	HEM	CHD-C1D-ND	3.38	128.10	124.43
3	B	602	VT1	CAO-CAN-CAL	3.35	120.14	116.62
2	A	601	HEM	CHA-C4D-ND	3.06	128.17	124.38
3	B	602	VT1	CAE-NAD-NAH	-2.95	105.24	108.17
2	B	601	HEM	O2A-CGA-CBA	2.83	123.13	114.03
3	B	602	VT1	OBB-CBC-CBD	-2.81	101.76	108.15
3	A	602	VT1	CAK-CAL-CAN	-2.80	119.65	123.29
3	B	602	VT1	CAB-CAI-CAO	-2.79	120.54	122.84
3	A	602	VT1	CAU-CAT-NBK	-2.78	118.85	122.28
2	A	601	HEM	O2A-CGA-CBA	2.78	122.96	114.03
2	A	601	HEM	CHA-C4D-C3D	-2.77	120.14	125.33
2	A	601	HEM	O2D-CGD-CBD	2.74	122.84	114.03
3	B	602	VT1	CAK-CAL-CAN	-2.74	119.74	123.29
2	B	601	HEM	C4B-CHC-C1C	2.73	126.17	122.56
3	A	602	VT1	OBB-CBC-CBD	-2.71	101.97	108.15
3	A	602	VT1	CAE-NAD-NAH	-2.68	105.50	108.17
2	B	601	HEM	O2D-CGD-O1D	-2.64	116.71	123.30
3	B	602	VT1	CAJ-CAI-CAO	2.64	119.38	116.10
2	B	601	HEM	CHD-C1D-C2D	-2.59	120.93	124.98
2	B	601	HEM	CHA-C4D-C3D	-2.57	120.51	125.33
3	B	602	VT1	CAU-CAT-NBK	-2.53	119.17	122.28
3	A	602	VT1	CAJ-CAI-CAO	2.52	119.24	116.10
3	B	602	VT1	CAW-CBJ-NBK	-2.50	120.20	124.32
2	A	601	HEM	CHD-C1D-ND	2.45	127.09	124.43
2	B	601	HEM	O2D-CGD-CBD	2.40	121.74	114.03
2	A	601	HEM	CBD-CAD-C3D	2.35	119.17	112.63
2	A	601	HEM	O2A-CGA-O1A	-2.35	117.43	123.30
2	B	601	HEM	O2A-CGA-O1A	-2.35	117.45	123.30
3	A	602	VT1	CAW-CBJ-NBK	-2.32	120.50	124.32
3	A	602	VT1	NAF-NAG-NAH	2.28	112.65	110.09
3	B	602	VT1	NAF-NAG-NAH	2.19	112.55	110.09
2	B	601	HEM	CHB-C1B-NB	2.16	127.05	124.38
2	A	601	HEM	C4B-CHC-C1C	2.13	125.36	122.56
3	A	602	VT1	CAV-CAU-CAT	2.08	120.97	118.99
2	B	601	HEM	C3C-C4C-NC	-2.04	107.08	110.94

There are no chirality outliers.

All (16) torsion outliers are listed below:

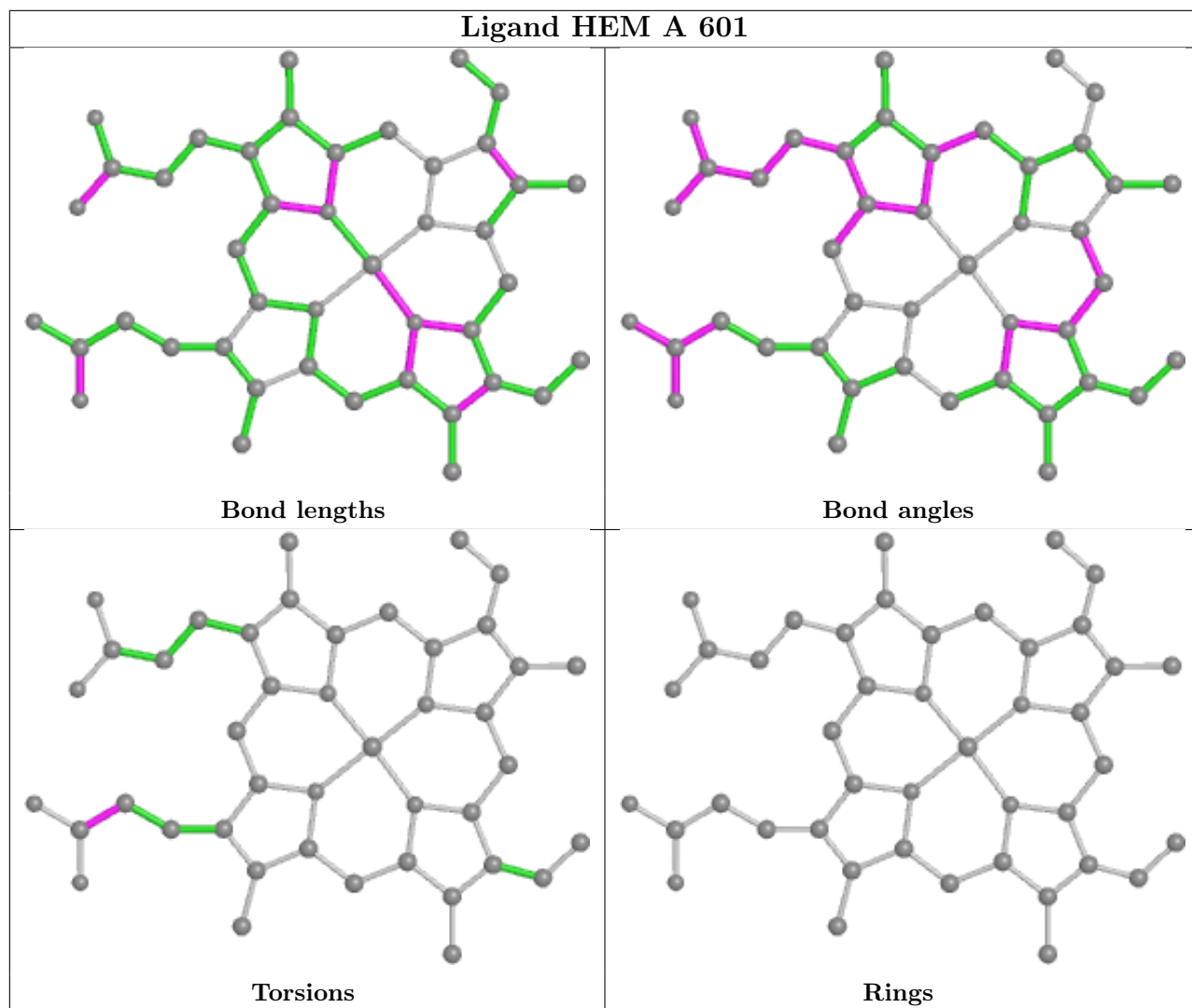
Mol	Chain	Res	Type	Atoms
3	A	602	VT1	CAB-CAC-NAD-CAE
3	B	602	VT1	CAB-CAC-NAD-CAE
3	B	602	VT1	FAR-CAQ-CAT-CAU
3	B	602	VT1	FAS-CAQ-CAT-CAU
3	A	602	VT1	FAS-CAQ-CAT-CAU
3	A	602	VT1	CAZ-CBA-OBB-CBC
3	A	602	VT1	CBH-CBA-OBB-CBC
3	A	602	VT1	FAR-CAQ-CAT-CAU
2	B	601	HEM	CAA-CBA-CGA-O2A
3	A	602	VT1	OBB-CBC-CBD-FBE
2	A	601	HEM	CAA-CBA-CGA-O2A
3	A	602	VT1	OBB-CBC-CBD-FBF
3	A	602	VT1	CAB-CAC-NAD-NAH
3	B	602	VT1	CAB-CAC-NAD-NAH
3	B	602	VT1	CAZ-CBA-OBB-CBC
2	B	601	HEM	CAA-CBA-CGA-O1A

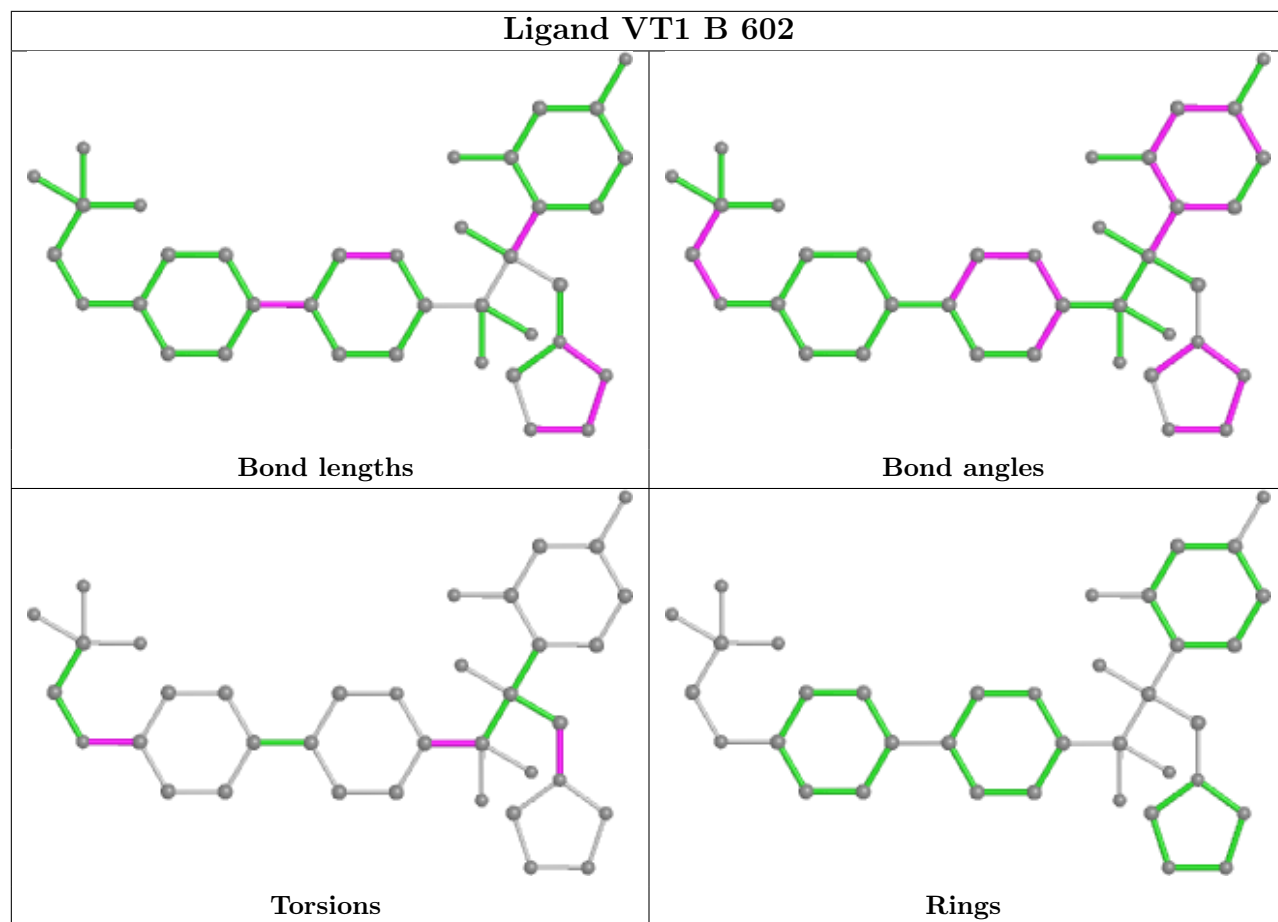
There are no ring outliers.

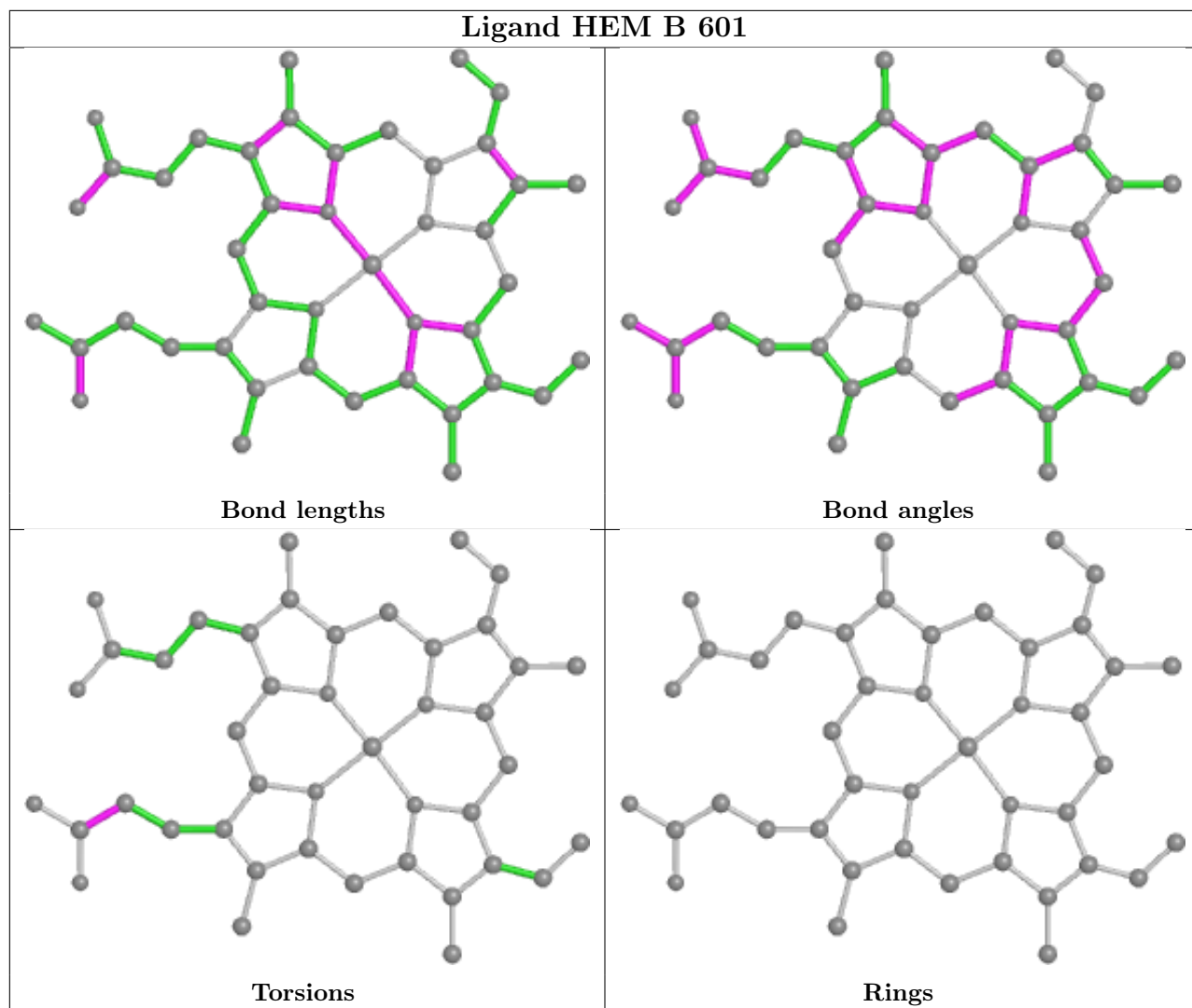
4 monomers are involved in 18 short contacts:

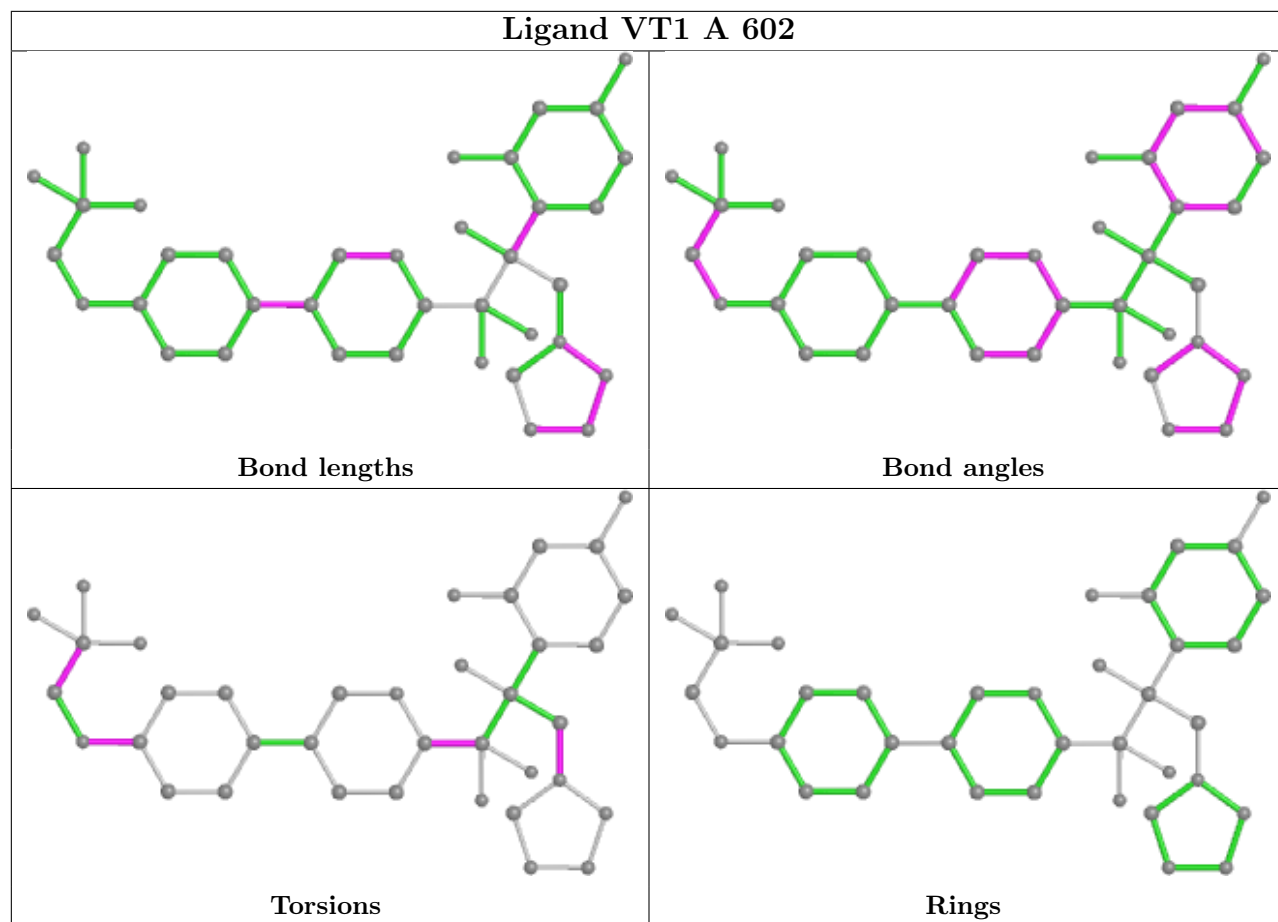
Mol	Chain	Res	Type	Clashes	Symm-Clashes
2	A	601	HEM	3	0
3	B	602	VT1	7	0
2	B	601	HEM	8	0
3	A	602	VT1	1	0

The following is a two-dimensional graphical depiction of Mogul quality analysis of bond lengths, bond angles, torsion angles, and ring geometry for all instances of the Ligand of Interest. In addition, ligands with molecular weight > 250 and outliers as shown on the validation Tables will also be included. For torsion angles, if less than 5% of the Mogul distribution of torsion angles is within 10 degrees of the torsion angle in question, then that torsion angle is considered an outlier. Any bond that is central to one or more torsion angles identified as an outlier by Mogul will be highlighted in the graph. For rings, the root-mean-square deviation (RMSD) between the ring in question and similar rings identified by Mogul is calculated over all ring torsion angles. If the average RMSD is greater than 60 degrees and the minimal RMSD between the ring in question and any Mogul-identified rings is also greater than 60 degrees, then that ring is considered an outlier. The outliers are highlighted in purple. The color gray indicates Mogul did not find sufficient equivalents in the CSD to analyse the geometry.









5.7 Other polymers [i](#)

There are no such residues in this entry.

5.8 Polymer linkage issues [i](#)

There are no chain breaks in this entry.

6 Fit of model and data

6.1 Protein, DNA and RNA chains

In the following table, the column labelled ‘#RSRZ > 2’ contains the number (and percentage) of RSRZ outliers, followed by percent RSRZ outliers for the chain as percentile scores relative to all X-ray entries and entries of similar resolution. The OWAB column contains the minimum, median, 95th percentile and maximum values of the occupancy-weighted average B-factor per residue. The column labelled ‘Q < 0.9’ lists the number of (and percentage) of residues with an average occupancy less than 0.9.

Mol	Chain	Analysed	<RSRZ>	#RSRZ>2	OWAB(Å ²)	Q<0.9
1	A	484/490 (98%)	0.34	32 (6%) 18 17	21, 35, 75, 123	0
1	B	484/490 (98%)	0.60	46 (9%) 8 7	21, 34, 94, 255	0
All	All	968/980 (98%)	0.47	78 (8%) 12 11	21, 34, 83, 255	0

All (78) RSRZ outliers are listed below:

Mol	Chain	Res	Type	RSRZ
1	B	55	ILE	30.4
1	B	56	PRO	22.0
1	B	54	TRP	16.1
1	B	57	TRP	11.5
1	B	65	GLY	10.0
1	B	271	ASP	8.7
1	A	273	ASN	7.8
1	A	439	PHE	7.8
1	A	272	PRO	7.6
1	B	244	TRP	7.3
1	B	63	SER	7.3
1	B	241	PRO	7.3
1	B	273	ASN	7.1
1	A	514	GLU	7.1
1	B	234	VAL	6.9
1	B	58	PHE	6.9
1	B	214	ASP	6.4
1	B	64	TYR	6.4
1	B	52	PHE	6.0
1	A	270	ILE	5.4
1	B	439	PHE	5.3
1	B	60	SER	5.0
1	A	54	TRP	4.7
1	B	269	ASP	4.4

Continued on next page...

Continued from previous page...

Mol	Chain	Res	Type	RSRZ
1	B	213	PHE	4.3
1	B	266	GLU	4.2
1	B	270	ILE	4.1
1	B	211	ARG	4.1
1	B	268	GLY	4.0
1	B	45	LYS	4.0
1	A	55	ILE	3.9
1	B	267	ARG	3.8
1	B	498	TYR	3.8
1	B	272	PRO	3.8
1	A	498	TYR	3.8
1	B	233	PHE	3.8
1	A	244	TRP	3.7
1	B	235	PHE	3.7
1	A	58	PHE	3.7
1	B	53	TYR	3.7
1	B	215	ARG	3.7
1	A	269	ASP	3.6
1	B	514	GLU	3.6
1	A	271	ASP	3.6
1	B	238	LEU	3.5
1	B	243	TYR	3.5
1	B	217	PHE	3.3
1	A	240	LEU	3.3
1	A	235	PHE	3.2
1	A	239	PRO	3.2
1	B	239	PRO	3.1
1	A	391	GLU	3.1
1	A	180	GLU	3.1
1	B	441	SER	3.0
1	B	67	GLN	2.9
1	B	237	ASN	2.9
1	A	394	TYR	2.8
1	B	59	GLY	2.8
1	B	240	LEU	2.8
1	A	393	ASN	2.6
1	A	213	PHE	2.6
1	A	67	GLN	2.5
1	A	437	VAL	2.5
1	A	238	LEU	2.5
1	B	442	SER	2.4
1	B	274	ARG	2.4

Continued on next page...

Continued from previous page...

Mol	Chain	Res	Type	RSRZ
1	B	61	ALA	2.4
1	A	245	ARG	2.4
1	A	234	VAL	2.4
1	A	268	GLY	2.4
1	A	217	PHE	2.3
1	B	440	ASN	2.3
1	B	62	ALA	2.2
1	A	274	ARG	2.1
1	A	207	ASP	2.1
1	A	57	TRP	2.1
1	A	52	PHE	2.0
1	A	221	TYR	2.0

6.2 Non-standard residues in protein, DNA, RNA chains [i](#)

There are no non-standard protein/DNA/RNA residues in this entry.

6.3 Carbohydrates [i](#)

There are no monosaccharides in this entry.

6.4 Ligands [i](#)

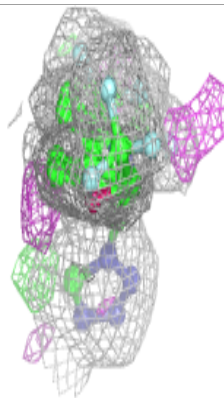
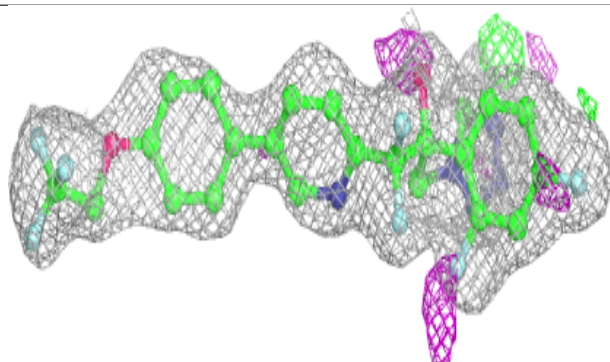
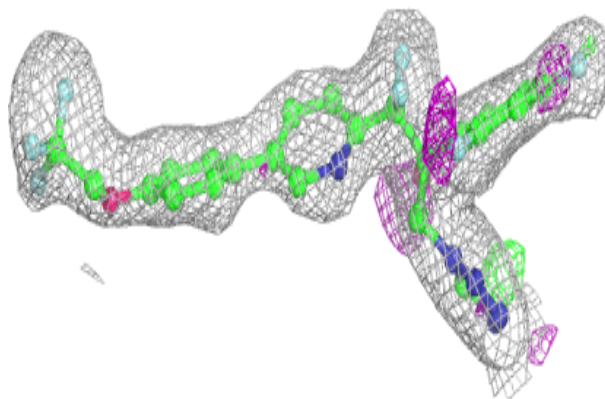
In the following table, the Atoms column lists the number of modelled atoms in the group and the number defined in the chemical component dictionary. The B-factors column lists the minimum, median, 95th percentile and maximum values of B factors of atoms in the group. The column labelled 'Q< 0.9' lists the number of atoms with occupancy less than 0.9.

Mol	Type	Chain	Res	Atoms	RSCC	RSR	B-factors(Å ²)	Q<0.9
3	VT1	A	602	37/37	0.92	0.15	21,30,69,71	0
3	VT1	B	602	37/37	0.94	0.13	20,30,82,89	0
2	HEM	A	601	43/43	0.97	0.10	20,25,30,31	0
2	HEM	B	601	43/43	0.97	0.10	18,25,28,31	0

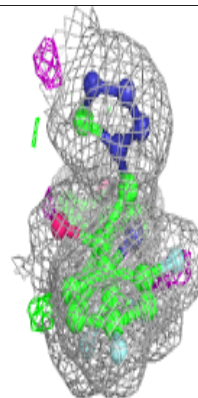
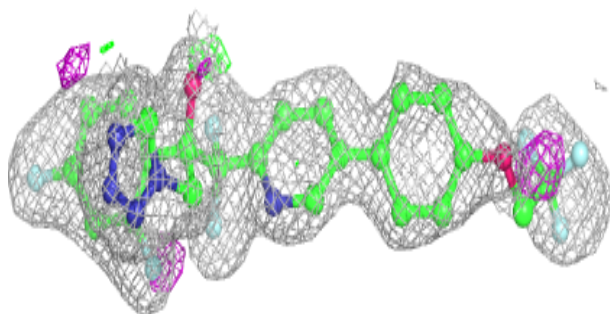
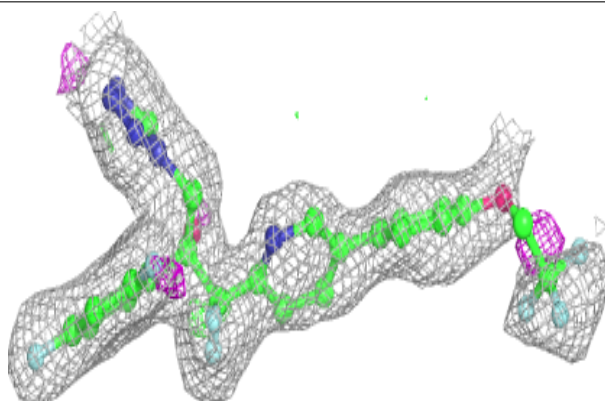
The following is a graphical depiction of the model fit to experimental electron density of all instances of the Ligand of Interest. In addition, ligands with molecular weight > 250 and outliers as shown on the geometry validation Tables will also be included. Each fit is shown from different orientation to approximate a three-dimensional view.

Electron density around VT1 A 602:

$2mF_o-DF_c$ (at 0.7 rmsd) in gray
 mF_o-DF_c (at 3 rmsd) in purple (negative)
and green (positive)

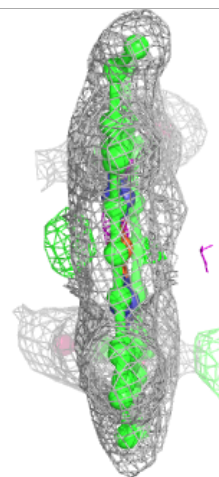
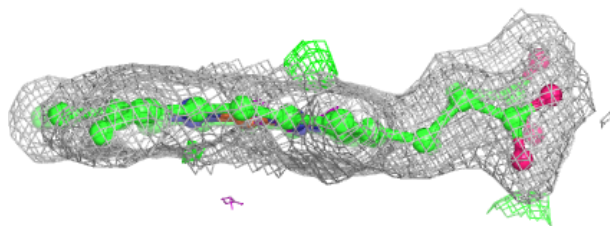
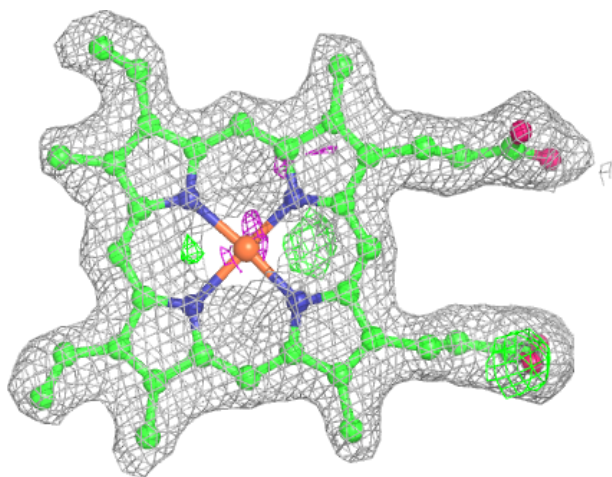
**Electron density around VT1 B 602:**

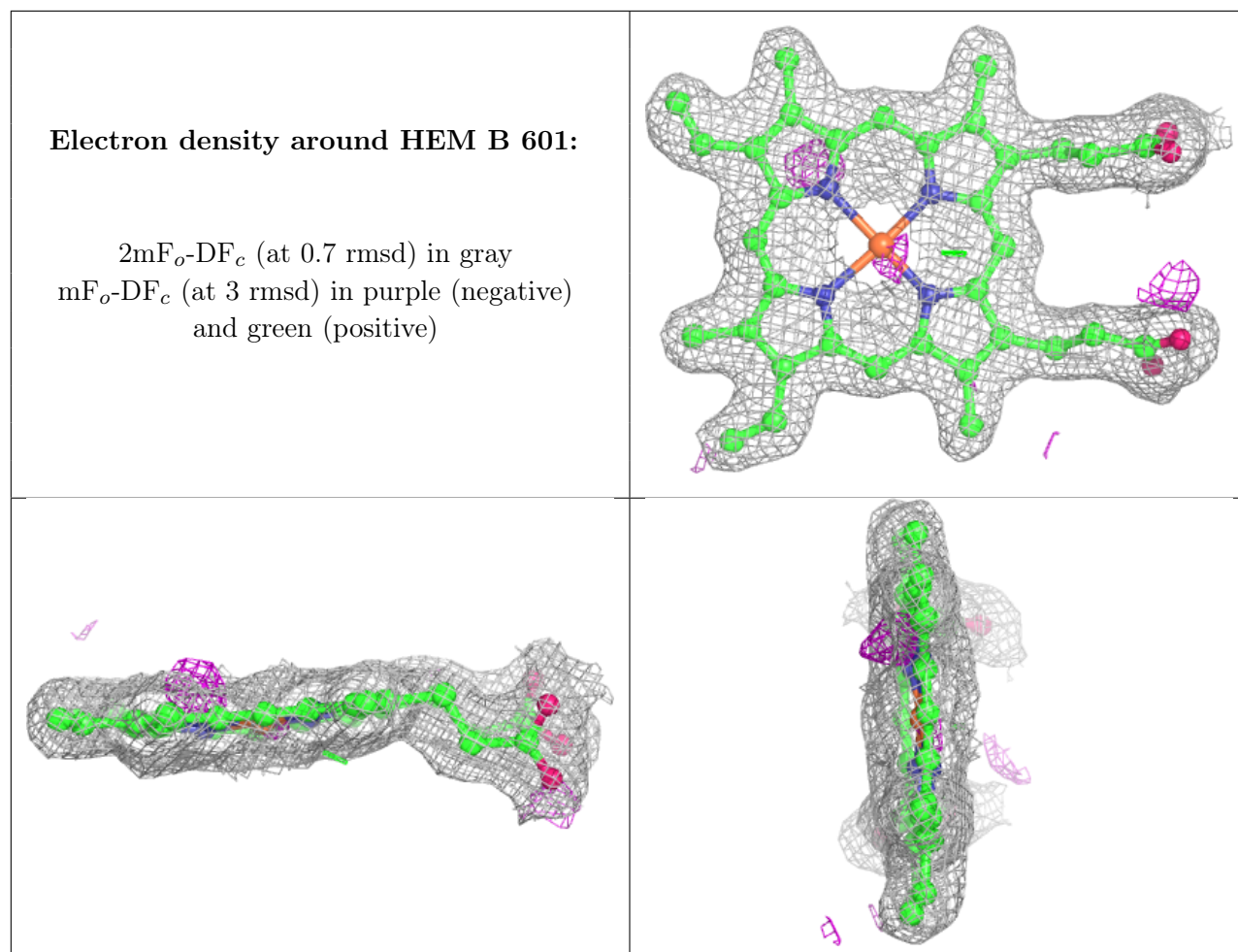
$2mF_o-DF_c$ (at 0.7 rmsd) in gray
 mF_o-DF_c (at 3 rmsd) in purple (negative)
and green (positive)



Electron density around HEM A 601:

$2mF_o-DF_c$ (at 0.7 rmsd) in gray
 mF_o-DF_c (at 3 rmsd) in purple (negative)
and green (positive)





6.5 Other polymers [i](#)

There are no such residues in this entry.