



Full wwPDB X-ray Structure Validation Report ⓘ

Oct 9, 2023 – 09:40 AM EDT

PDB ID : 7TZ7
Title : PI3K alpha in complex with an inhibitor
Authors : Knapp, M.S.; Tang, J.
Deposited on : 2022-02-15
Resolution : 2.41 Å(reported)

This is a Full wwPDB X-ray Structure Validation Report for a publicly released PDB entry.

We welcome your comments at validation@mail.wwpdb.org

A user guide is available at

<https://www.wwpdb.org/validation/2017/XrayValidationReportHelp>

with specific help available everywhere you see the ⓘ symbol.

The types of validation reports are described at

<http://www.wwpdb.org/validation/2017/FAQs#types>.

The following versions of software and data (see [references ⓘ](#)) were used in the production of this report:

MolProbity : 4.02b-467
Mogul : 1.8.5 (274361), CSD as541be (2020)
Xtriage (Phenix) : 1.13
EDS : 2.35.1
buster-report : 1.1.7 (2018)
Percentile statistics : 20191225.v01 (using entries in the PDB archive December 25th 2019)
Refmac : 5.8.0158
CCP4 : 7.0.044 (Gargrove)
Ideal geometry (proteins) : Engh & Huber (2001)
Ideal geometry (DNA, RNA) : Parkinson et al. (1996)
Validation Pipeline (wwPDB-VP) : 2.35.1

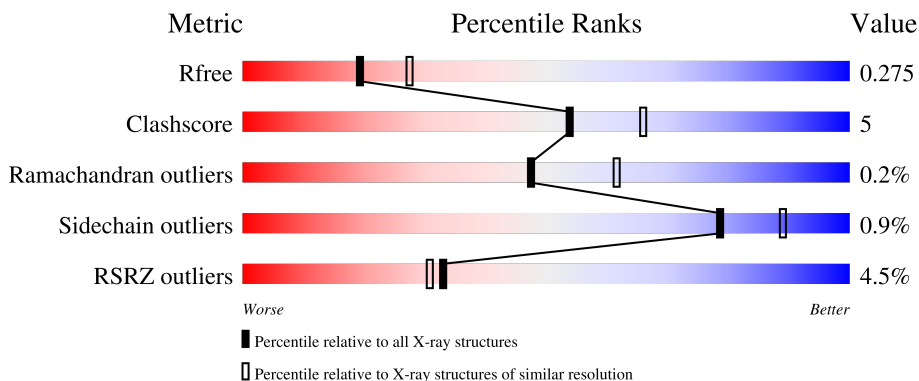
1 Overall quality at a glance

The following experimental techniques were used to determine the structure:

X-RAY DIFFRACTION

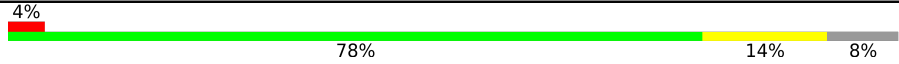
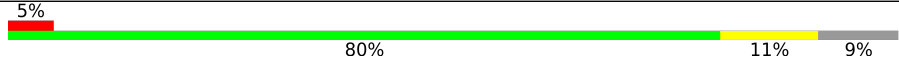
The reported resolution of this entry is 2.41 Å.

Percentile scores (ranging between 0-100) for global validation metrics of the entry are shown in the following graphic. The table shows the number of entries on which the scores are based.



Metric	Whole archive (#Entries)	Similar resolution (#Entries, resolution range(Å))
R_{free}	130704	4647 (2.44-2.40)
Clashscore	141614	5161 (2.44-2.40)
Ramachandran outliers	138981	5073 (2.44-2.40)
Sidechain outliers	138945	5074 (2.44-2.40)
RSRZ outliers	127900	4543 (2.44-2.40)

The table below summarises the geometric issues observed across the polymeric chains and their fit to the electron density. The red, orange, yellow and green segments of the lower bar indicate the fraction of residues that contain outliers for ≥ 3 , 2, 1 and 0 types of geometric quality criteria respectively. A grey segment represents the fraction of residues that are not modelled. The numeric value for each fraction is indicated below the corresponding segment, with a dot representing fractions $\leq 5\%$. The upper red bar (where present) indicates the fraction of residues that have poor fit to the electron density. The numeric value is given above the bar.

Mol	Chain	Length	Quality of chain
1	A	1074	 4% 78% 14% 8%
2	B	291	 5% 80% 11% 9%

2 Entry composition [i](#)

There are 4 unique types of molecules in this entry. The entry contains 10019 atoms, of which 0 are hydrogens and 0 are deuteriums.

In the tables below, the ZeroOcc column contains the number of atoms modelled with zero occupancy, the AltConf column contains the number of residues with at least one atom in alternate conformation and the Trace column contains the number of residues modelled with at most 2 atoms.

- Molecule 1 is a protein called Phosphatidylinositol 4,5-bisphosphate 3-kinase catalytic subunit alpha isoform.

Mol	Chain	Residues	Atoms					ZeroOcc	AltConf	Trace
			Total	C	N	O	S			
1	A	988	7815	5001	1325	1427	62	0	1	0

There are 8 discrepancies between the modelled and reference sequences:

Chain	Residue	Modelled	Actual	Comment	Reference
A	232	LYS	MET	engineered mutation	UNP P42336
A	233	LYS	LEU	engineered mutation	UNP P42336
A	1069	HIS	-	expression tag	UNP P42336
A	1070	HIS	-	expression tag	UNP P42336
A	1071	HIS	-	expression tag	UNP P42336
A	1072	HIS	-	expression tag	UNP P42336
A	1073	HIS	-	expression tag	UNP P42336
A	1074	HIS	-	expression tag	UNP P42336

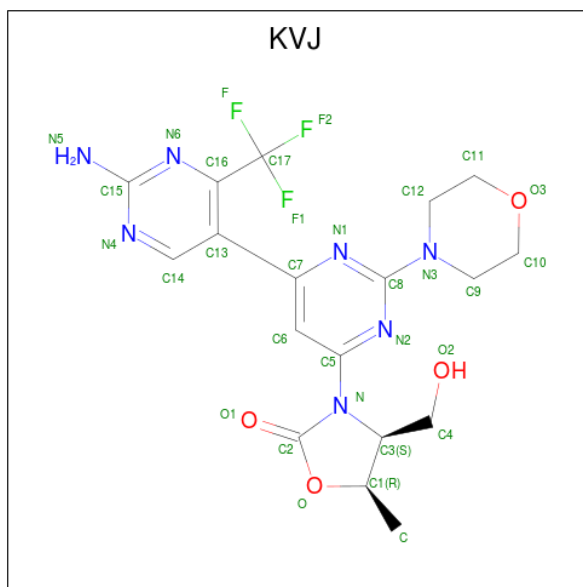
- Molecule 2 is a protein called Isoform 3 of Phosphatidylinositol 3-kinase regulatory subunit alpha.

Mol	Chain	Residues	Atoms					ZeroOcc	AltConf	Trace
			Total	C	N	O	S			
2	B	266	2141	1333	383	420	5	0	1	0

There is a discrepancy between the modelled and reference sequences:

Chain	Residue	Modelled	Actual	Comment	Reference
B	306	TYR	THR	conflict	UNP P27986

- Molecule 3 is (4S,5R)-3-[2'-amino-2-(morpholin-4-yl)-4'-(trifluoromethyl)[4,5'-bipyrimidin]-6-yl]-4-(hydroxymethyl)-5-methyl-1,3-oxazolidin-2-one (three-letter code: KVJ) (formula: C₁₈H₂₀F₃N₇O₄) (labeled as "Ligand of Interest" by depositor).



Mol	Chain	Residues	Atoms				ZeroOcc	AltConf	
			Total	C	F	N			O
3	A	1	32	18	3	7	4	0	0

- Molecule 4 is water.

Mol	Chain	Residues	Atoms	ZeroOcc	AltConf
4	A	26	Total 26 O 26	0	0
4	B	5	Total 5 O 5	0	0

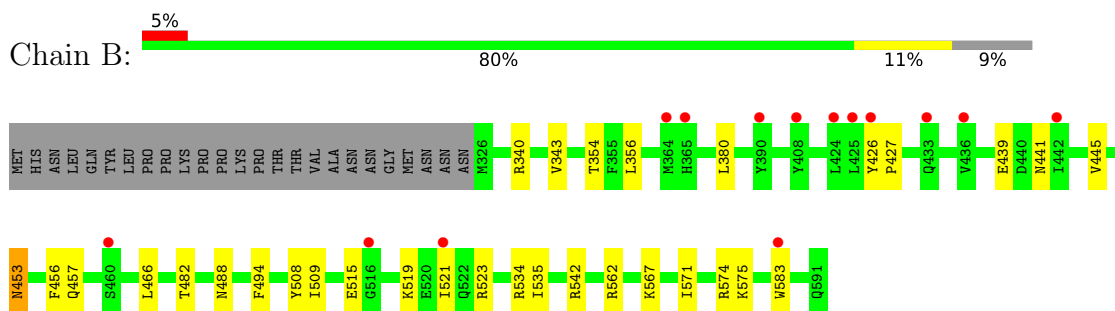
3 Residue-property plots [i](#)

These plots are drawn for all protein, RNA, DNA and oligosaccharide chains in the entry. The first graphic for a chain summarises the proportions of the various outlier classes displayed in the second graphic. The second graphic shows the sequence view annotated by issues in geometry and electron density. Residues are color-coded according to the number of geometric quality criteria for which they contain at least one outlier: green = 0, yellow = 1, orange = 2 and red = 3 or more. A red dot above a residue indicates a poor fit to the electron density ($RSRZ > 2$). Stretches of 2 or more consecutive residues without any outlier are shown as a green connector. Residues present in the sample, but not in the model, are shown in grey.

- Molecule 1: Phosphatidylinositol 4,5-bisphosphate 3-kinase catalytic subunit alpha isoform



- Molecule 2: Isoform 3 of Phosphatidylinositol 3-kinase regulatory subunit alpha



4 Data and refinement statistics

Property	Value	Source
Space group	P 21 21 21	Depositor
Cell constants a, b, c, α , β , γ	99.87Å 109.67Å 135.24Å 90.00° 90.00° 90.00°	Depositor
Resolution (Å)	54.84 – 2.41 64.81 – 2.41	Depositor EDS
% Data completeness (in resolution range)	99.7 (54.84-2.41) 89.4 (64.81-2.41)	Depositor EDS
R_{merge}	0.09	Depositor
R_{sym}	(Not available)	Depositor
$\langle I/\sigma(I) \rangle$ ¹	0.73 (at 2.42Å)	Xtrriage
Refinement program	PHENIX 1.19.2-4158-000	Depositor
R, R_{free}	0.239 , 0.277 0.236 , 0.275	Depositor DCC
R_{free} test set	2809 reflections (4.87%)	wwPDB-VP
Wilson B-factor (Å ²)	56.8	Xtrriage
Anisotropy	0.342	Xtrriage
Bulk solvent k_{sol} (e/Å ³), B_{sol} (Å ²)	0.29 , 52.2	EDS
L-test for twinning ²	$\langle L \rangle = 0.50$, $\langle L^2 \rangle = 0.34$	Xtrriage
Estimated twinning fraction	No twinning to report.	Xtrriage
F_o, F_c correlation	0.94	EDS
Total number of atoms	10019	wwPDB-VP
Average B, all atoms (Å ²)	90.0	wwPDB-VP

Xtrriage's analysis on translational NCS is as follows: *The largest off-origin peak in the Patterson function is 3.57% of the height of the origin peak. No significant pseudotranslation is detected.*

¹Intensities estimated from amplitudes.

²Theoretical values of $\langle |L| \rangle$, $\langle L^2 \rangle$ for acentric reflections are 0.5, 0.333 respectively for untwinned datasets, and 0.375, 0.2 for perfectly twinned datasets.

5 Model quality

5.1 Standard geometry

Bond lengths and bond angles in the following residue types are not validated in this section: KVJ

The Z score for a bond length (or angle) is the number of standard deviations the observed value is removed from the expected value. A bond length (or angle) with $|Z| > 5$ is considered an outlier worth inspection. RMSZ is the root-mean-square of all Z scores of the bond lengths (or angles).

Mol	Chain	Bond lengths		Bond angles	
		RMSZ	# Z >5	RMSZ	# Z >5
1	A	0.24	0/7999	0.45	0/10858
2	B	0.25	0/2174	0.47	0/2933
All	All	0.24	0/10173	0.46	0/13791

There are no bond length outliers.

There are no bond angle outliers.

There are no chirality outliers.

There are no planarity outliers.

5.2 Too-close contacts

In the following table, the Non-H and H(model) columns list the number of non-hydrogen atoms and hydrogen atoms in the chain respectively. The H(added) column lists the number of hydrogen atoms added and optimized by MolProbity. The Clashes column lists the number of clashes within the asymmetric unit, whereas Symm-Clashes lists symmetry-related clashes.

Mol	Chain	Non-H	H(model)	H(added)	Clashes	Symm-Clashes
1	A	7815	0	7513	88	0
2	B	2141	0	1999	20	0
3	A	32	0	0	0	0
4	A	26	0	0	1	0
4	B	5	0	0	1	0
All	All	10019	0	9512	104	0

The all-atom clashscore is defined as the number of clashes found per 1000 atoms (including hydrogen atoms). The all-atom clashscore for this structure is 5.

All (104) close contacts within the same asymmetric unit are listed below, sorted by their clash magnitude.

Atom-1	Atom-2	Interatomic distance (Å)	Clash overlap (Å)
1:A:738:GLN:HG3	1:A:741:ARG:HH21	1.55	0.71
1:A:937:PHE:HD1	1:A:938:LEU:HG	1.57	0.69
1:A:741:ARG:HG2	1:A:742:PRO:HD2	1.75	0.68
1:A:193:VAL:HG22	1:A:208:THR:HG22	1.77	0.66
1:A:793:LEU:HD22	1:A:794:PHE:HD2	1.61	0.66
1:A:1030:LYS:HB3	1:A:1034:GLU:HB3	1.79	0.64
1:A:619:LEU:HD22	1:A:623:LEU:HD22	1.82	0.62
1:A:970:GLU:OE1	1:A:973:LYS:NZ	2.27	0.62
2:B:515:GLU:N	2:B:515:GLU:OE1	2.35	0.60
1:A:157:ASN:HB3	1:A:161:SER:HB3	1.84	0.59
1:A:360:ILE:HG22	1:A:367:LEU:HD12	1.85	0.58
1:A:395:ASP:OD1	1:A:577[A]:ARG:NH1	2.37	0.58
1:A:2:PRO:HG2	2:B:482:THR:HG23	1.87	0.57
1:A:1044:ASN:ND2	1:A:1051:TRP:O	2.38	0.56
1:A:328:TRP:HA	1:A:394:PRO:HB3	1.87	0.56
1:A:898:THR:HG22	1:A:983:MET:HE1	1.88	0.56
2:B:466:LEU:HD11	2:B:562:ARG:HD2	1.88	0.55
1:A:936:HIS:ND1	1:A:1012:GLU:OE2	2.35	0.55
2:B:494:PHE:HB3	2:B:535:ILE:HG12	1.87	0.55
1:A:39:GLU:HB2	1:A:88:ARG:HE	1.73	0.54
1:A:739:MET:HA	1:A:744:PHE:CD2	2.43	0.53
2:B:571:ILE:HG22	2:B:575:LYS:HE2	1.90	0.53
1:A:809:GLN:HG2	1:A:1010:MET:HE3	1.90	0.53
1:A:794:PHE:HE1	1:A:797:ASN:HB2	1.72	0.53
1:A:255:CYS:SG	1:A:286:MET:HB2	2.49	0.52
1:A:594:LYS:H	1:A:594:LYS:HD2	1.75	0.52
2:B:439:GLU:HB2	2:B:445:VAL:HG22	1.91	0.52
1:A:774:SER:HB3	1:A:778:PRO:HD3	1.92	0.52
1:A:181:ILE:HD12	1:A:278:MET:HB3	1.91	0.51
1:A:587:VAL:HA	1:A:590:TRP:HB2	1.91	0.51
2:B:567:LYS:O	2:B:571:ILE:HG12	2.10	0.51
1:A:214:ASP:OD1	1:A:214:ASP:N	2.44	0.51
1:A:941:LYS:HD2	1:A:951:ARG:HD2	1.92	0.51
1:A:736:VAL:O	1:A:740:ARG:HG3	2.11	0.51
1:A:723:LYS:HE3	1:A:734:PHE:CG	2.45	0.51
1:A:336:ILE:HD13	1:A:402:LEU:HD22	1.94	0.50
1:A:800:ILE:HB	1:A:848:ILE:HB	1.93	0.49
1:A:802:LYS:HE3	1:A:805:ASP:HB2	1.93	0.49
1:A:1027:ALA:HB1	1:A:1030:LYS:HD2	1.93	0.49
1:A:217:PRO:HD3	1:A:265:TYR:O	2.12	0.49
1:A:861:GLN:HB3	1:A:872:PHE:CD2	2.47	0.49
1:A:743:ASP:OD1	1:A:743:ASP:N	2.45	0.48

Continued on next page...

Continued from previous page...

Atom-1	Atom-2	Interatomic distance (Å)	Clash overlap (Å)
2:B:534:ARG:NH2	4:B:602:HOH:O	2.45	0.48
2:B:354:THR:HA	2:B:426:TYR:O	2.13	0.48
1:A:192:VAL:HG12	1:A:283:PRO:HG2	1.96	0.47
1:A:542:GLU:HB3	2:B:380:LEU:HD13	1.96	0.47
1:A:193:VAL:HG23	1:A:282:MET:HG2	1.95	0.47
1:A:488:ASP:O	1:A:492:ILE:HG12	2.14	0.47
1:A:216:VAL:HG12	1:A:218:GLU:H	1.79	0.47
1:A:744:PHE:CE2	1:A:748:LEU:HD22	2.50	0.47
1:A:723:LYS:HE3	1:A:734:PHE:CD2	2.50	0.47
2:B:343:VAL:HG13	2:B:356:LEU:HD21	1.97	0.46
2:B:453:ASN:O	2:B:457:GLN:HG2	2.16	0.46
2:B:519:LYS:O	2:B:523:ARG:HG3	2.16	0.46
1:A:917:HIS:CE1	1:A:919:SER:HB2	2.50	0.46
1:A:540:LEU:O	2:B:340:ARG:NH2	2.43	0.46
2:B:456:PHE:CE1	2:B:574:ARG:HB2	2.51	0.46
1:A:944:LYS:HE2	1:A:944:LYS:HB2	1.84	0.45
1:A:326:SER:HB3	1:A:329:VAL:HG23	1.99	0.45
1:A:983:MET:HE2	1:A:983:MET:HB2	1.75	0.45
1:A:149:GLU:O	1:A:153:LEU:HD12	2.17	0.45
1:A:655:LYS:HE2	1:A:655:LYS:HB3	1.77	0.45
1:A:135:GLU:OE2	1:A:644:TYR:HB3	2.17	0.45
1:A:348:ILE:H	1:A:348:ILE:HG13	1.58	0.44
1:A:628:LEU:HD22	1:A:663:ILE:HD13	1.99	0.44
1:A:783:TRP:O	1:A:797:ASN:N	2.47	0.44
1:A:969:GLN:HG2	1:A:970:GLU:HG3	2.00	0.44
1:A:394:PRO:HB2	1:A:577[A]:ARG:NH1	2.32	0.44
1:A:1031:THR:OG1	1:A:1034:GLU:HB2	2.16	0.44
1:A:95:PHE:CD2	1:A:96:GLN:HG2	2.52	0.44
1:A:27:PRO:HD3	1:A:101:VAL:HB	1.99	0.44
1:A:600:GLU:HB2	1:A:1000:ASN:ND2	2.32	0.44
1:A:260:TYR:HB3	1:A:262:LEU:HD21	1.99	0.44
1:A:440:LYS:HA	1:A:476:GLU:HA	2.01	0.43
1:A:689:GLU:O	1:A:693:ARG:HG3	2.18	0.43
1:A:410:LYS:HG2	1:A:412:ARG:HG3	2.01	0.43
2:B:441:ASN:OD1	2:B:441:ASN:N	2.48	0.43
1:A:60:GLN:HE21	2:B:508:TYR:HE2	1.67	0.43
1:A:195:TRP:CD1	1:A:195:TRP:N	2.86	0.43
1:A:290:LYS:HD3	1:A:294:TYR:HE2	1.83	0.43
1:A:171:VAL:HG12	1:A:270:TYR:CD1	2.55	0.42
1:A:889:ILE:H	1:A:889:ILE:HG12	1.66	0.42
1:A:81:GLU:OE2	4:A:1201:HOH:O	2.22	0.42

Continued on next page...

Continued from previous page...

Atom-1	Atom-2	Interatomic distance (Å)	Clash overlap (Å)
1:A:543:ILE:HD11	1:A:567:LYS:HD3	2.00	0.42
2:B:488:ASN:OD1	2:B:542:ARG:NH1	2.51	0.42
2:B:509:ILE:HG22	2:B:521:ILE:HD12	2.02	0.42
1:A:794:PHE:CE1	1:A:797:ASN:HB2	2.53	0.42
1:A:562:PRO:HG3	1:A:591:PRO:HG2	2.02	0.41
1:A:43:ILE:HG13	1:A:85:GLU:O	2.20	0.41
1:A:140:ARG:NH2	1:A:689:GLU:OE2	2.44	0.41
1:A:831:LEU:HD21	1:A:983:MET:HB3	2.01	0.41
1:A:937:PHE:CD1	1:A:938:LEU:HG	2.46	0.41
1:A:678:LYS:HA	1:A:678:LYS:HD3	1.82	0.41
1:A:723:LYS:HE2	1:A:723:LYS:HB2	1.78	0.41
1:A:162:ARG:HB3	1:A:297:LEU:HD21	2.03	0.41
1:A:196:VAL:O	1:A:204:LYS:HA	2.21	0.41
1:A:6:SER:OG	1:A:7:SER:N	2.54	0.41
1:A:44:THR:O	1:A:48:GLU:HG2	2.20	0.41
1:A:19:ARG:HD2	1:A:35:GLU:CD	2.42	0.40
2:B:445:VAL:HG11	2:B:583:TRP:CE3	2.57	0.40
1:A:375:ARG:CZ	1:A:409:VAL:HG21	2.50	0.40
1:A:279:LEU:HD21	1:A:832:ARG:HD3	2.02	0.40
1:A:637:GLN:NE2	1:A:674:GLU:OE2	2.45	0.40
1:A:676:HIS:CG	1:A:843:ASP:HB2	2.57	0.40

There are no symmetry-related clashes.

5.3 Torsion angles [i](#)

5.3.1 Protein backbone [i](#)

In the following table, the Percentiles column shows the percent Ramachandran outliers of the chain as a percentile score with respect to all X-ray entries followed by that with respect to entries of similar resolution.

The Analysed column shows the number of residues for which the backbone conformation was analysed, and the total number of residues.

Mol	Chain	Analysed	Favoured	Allowed	Outliers	Percentiles
1	A	977/1074 (91%)	930 (95%)	45 (5%)	2 (0%)	47 61
2	B	265/291 (91%)	255 (96%)	9 (3%)	1 (0%)	34 47
All	All	1242/1365 (91%)	1185 (95%)	54 (4%)	3 (0%)	47 61

All (3) Ramachandran outliers are listed below:

Mol	Chain	Res	Type
1	A	158	SER
2	B	427	PRO
1	A	762	GLY

5.3.2 Protein sidechains [i](#)

In the following table, the Percentiles column shows the percent sidechain outliers of the chain as a percentile score with respect to all X-ray entries followed by that with respect to entries of similar resolution.

The Analysed column shows the number of residues for which the sidechain conformation was analysed, and the total number of residues.

Mol	Chain	Analysed	Rotameric	Outliers	Percentiles
1	A	833/980 (85%)	825 (99%)	8 (1%)	76 87
2	B	217/270 (80%)	216 (100%)	1 (0%)	88 95
All	All	1050/1250 (84%)	1041 (99%)	9 (1%)	78 89

All (9) residues with a non-rotameric sidechain are listed below:

Mol	Chain	Res	Type
1	A	76	GLU
1	A	177	LEU
1	A	478	ASP
1	A	555	ARG
1	A	748	LEU
1	A	789	MET
1	A	834	LEU
1	A	945	PHE
2	B	453	ASN

Sometimes sidechains can be flipped to improve hydrogen bonding and reduce clashes. All (3) such sidechains are listed below:

Mol	Chain	Res	Type
1	A	827	GLN
1	A	994	HIS
2	B	522	GLN

5.3.3 RNA [i](#)

There are no RNA molecules in this entry.

5.4 Non-standard residues in protein, DNA, RNA chains [i](#)

There are no non-standard protein/DNA/RNA residues in this entry.

5.5 Carbohydrates [i](#)

There are no monosaccharides in this entry.

5.6 Ligand geometry [i](#)

1 ligand is modelled in this entry.

In the following table, the Counts columns list the number of bonds (or angles) for which Mogul statistics could be retrieved, the number of bonds (or angles) that are observed in the model and the number of bonds (or angles) that are defined in the Chemical Component Dictionary. The Link column lists molecule types, if any, to which the group is linked. The Z score for a bond length (or angle) is the number of standard deviations the observed value is removed from the expected value. A bond length (or angle) with $|Z| > 2$ is considered an outlier worth inspection. RMSZ is the root-mean-square of all Z scores of the bond lengths (or angles).

Mol	Type	Chain	Res	Link	Bond lengths			Bond angles		
					Counts	RMSZ	# Z > 2	Counts	RMSZ	# Z > 2
3	KVJ	A	1101	-	34,35,35	0.22	0	43,52,52	0.49	0

In the following table, the Chirals column lists the number of chiral outliers, the number of chiral centers analysed, the number of these observed in the model and the number defined in the Chemical Component Dictionary. Similar counts are reported in the Torsion and Rings columns. '-' means no outliers of that kind were identified.

Mol	Type	Chain	Res	Link	Chirals	Torsions	Rings
3	KVJ	A	1101	-	-	1/20/44/44	0/4/4/4

There are no bond length outliers.

There are no bond angle outliers.

There are no chirality outliers.

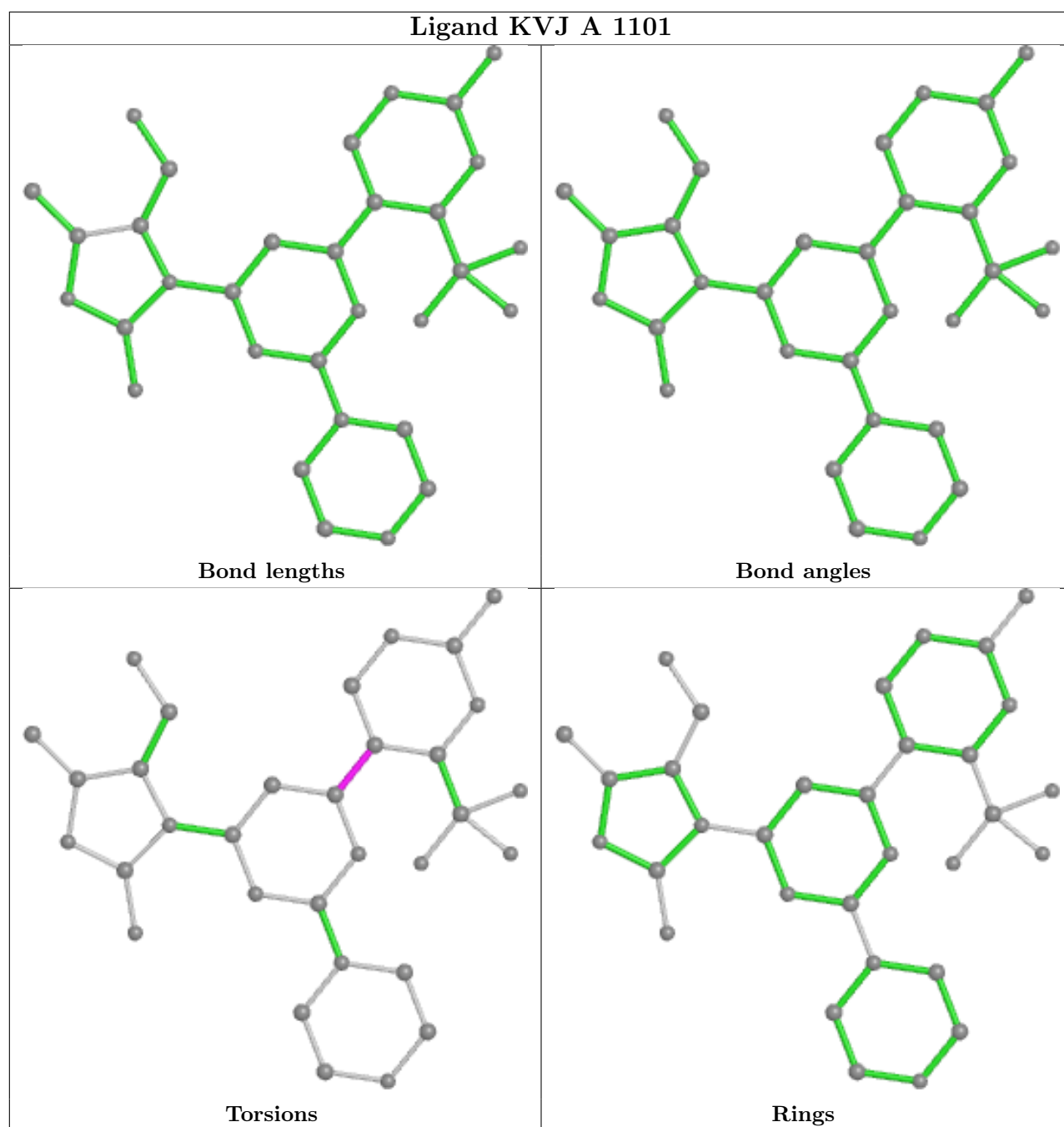
All (1) torsion outliers are listed below:

Mol	Chain	Res	Type	Atoms
3	A	1101	KVJ	C16-C13-C7-C6

There are no ring outliers.

No monomer is involved in short contacts.

The following is a two-dimensional graphical depiction of Mogul quality analysis of bond lengths, bond angles, torsion angles, and ring geometry for all instances of the Ligand of Interest. In addition, ligands with molecular weight > 250 and outliers as shown on the validation Tables will also be included. For torsion angles, if less than 5% of the Mogul distribution of torsion angles is within 10 degrees of the torsion angle in question, then that torsion angle is considered an outlier. Any bond that is central to one or more torsion angles identified as an outlier by Mogul will be highlighted in the graph. For rings, the root-mean-square deviation (RMSD) between the ring in question and similar rings identified by Mogul is calculated over all ring torsion angles. If the average RMSD is greater than 60 degrees and the minimal RMSD between the ring in question and any Mogul-identified rings is also greater than 60 degrees, then that ring is considered an outlier. The outliers are highlighted in purple. The color gray indicates Mogul did not find sufficient equivalents in the CSD to analyse the geometry.



5.7 Other polymers [i](#)

There are no such residues in this entry.

5.8 Polymer linkage issues [i](#)

There are no chain breaks in this entry.

6 Fit of model and data

6.1 Protein, DNA and RNA chains

In the following table, the column labelled ‘#RSRZ > 2’ contains the number (and percentage) of RSRZ outliers, followed by percent RSRZ outliers for the chain as percentile scores relative to all X-ray entries and entries of similar resolution. The OWAB column contains the minimum, median, 95th percentile and maximum values of the occupancy-weighted average B-factor per residue. The column labelled ‘Q < 0.9’ lists the number of (and percentage) of residues with an average occupancy less than 0.9.

Mol	Chain	Analysed	<RSRZ>	#RSRZ>2	OWAB(Å ²)	Q<0.9
1	A	988/1074 (91%)	0.31	42 (4%) 35 32	49, 85, 138, 195	0
2	B	266/291 (91%)	0.28	14 (5%) 26 24	53, 90, 149, 186	0
All	All	1254/1365 (91%)	0.30	56 (4%) 33 31	49, 86, 140, 195	0

All (56) RSRZ outliers are listed below:

Mol	Chain	Res	Type	RSRZ
1	A	747	ALA	4.4
1	A	191	ILE	4.0
1	A	217	PRO	3.8
2	B	426	TYR	3.8
1	A	221	ILE	3.7
2	B	424	LEU	3.6
1	A	557	TYR	3.4
1	A	200	PRO	3.4
1	A	301	CYS	3.4
1	A	889	ILE	3.3
1	A	262	LEU	3.3
2	B	516	GLY	3.1
2	B	433	GLN	3.1
1	A	261	PHE	3.0
1	A	559	VAL	3.0
1	A	521	ASN	2.9
1	A	480	PHE	2.9
1	A	531	LEU	2.9
1	A	522	GLU	2.9
1	A	264	LYS	2.9
1	A	328	TRP	2.9
1	A	216	VAL	2.8
1	A	270	TYR	2.8
1	A	171	VAL	2.7

Continued on next page...

Continued from previous page...

Mol	Chain	Res	Type	RSRZ
2	B	436	VAL	2.7
2	B	408	TYR	2.7
1	A	523	LEU	2.7
1	A	483	VAL	2.7
1	A	220	VAL	2.7
1	A	500	VAL	2.6
1	A	885	ASN	2.6
1	A	192	VAL	2.6
1	A	793	LEU	2.6
1	A	183	ASN	2.6
1	A	871	GLN	2.5
1	A	282	MET	2.5
1	A	194	ILE	2.5
1	A	265	TYR	2.5
2	B	364	MET	2.4
2	B	583	TRP	2.4
2	B	425	LEU	2.3
1	A	587	VAL	2.3
1	A	199	SER	2.3
1	A	945	PHE	2.2
1	A	205	GLN	2.2
1	A	294	TYR	2.2
1	A	641	TYR	2.2
2	B	460	SER	2.2
2	B	442	ILE	2.2
2	B	365	HIS	2.2
1	A	492	ILE	2.1
1	A	562	PRO	2.1
1	A	558	CYS	2.0
2	B	390	TYR	2.0
2	B	521	ILE	2.0
1	A	211	ILE	2.0

6.2 Non-standard residues in protein, DNA, RNA chains [i](#)

There are no non-standard protein/DNA/RNA residues in this entry.

6.3 Carbohydrates [i](#)

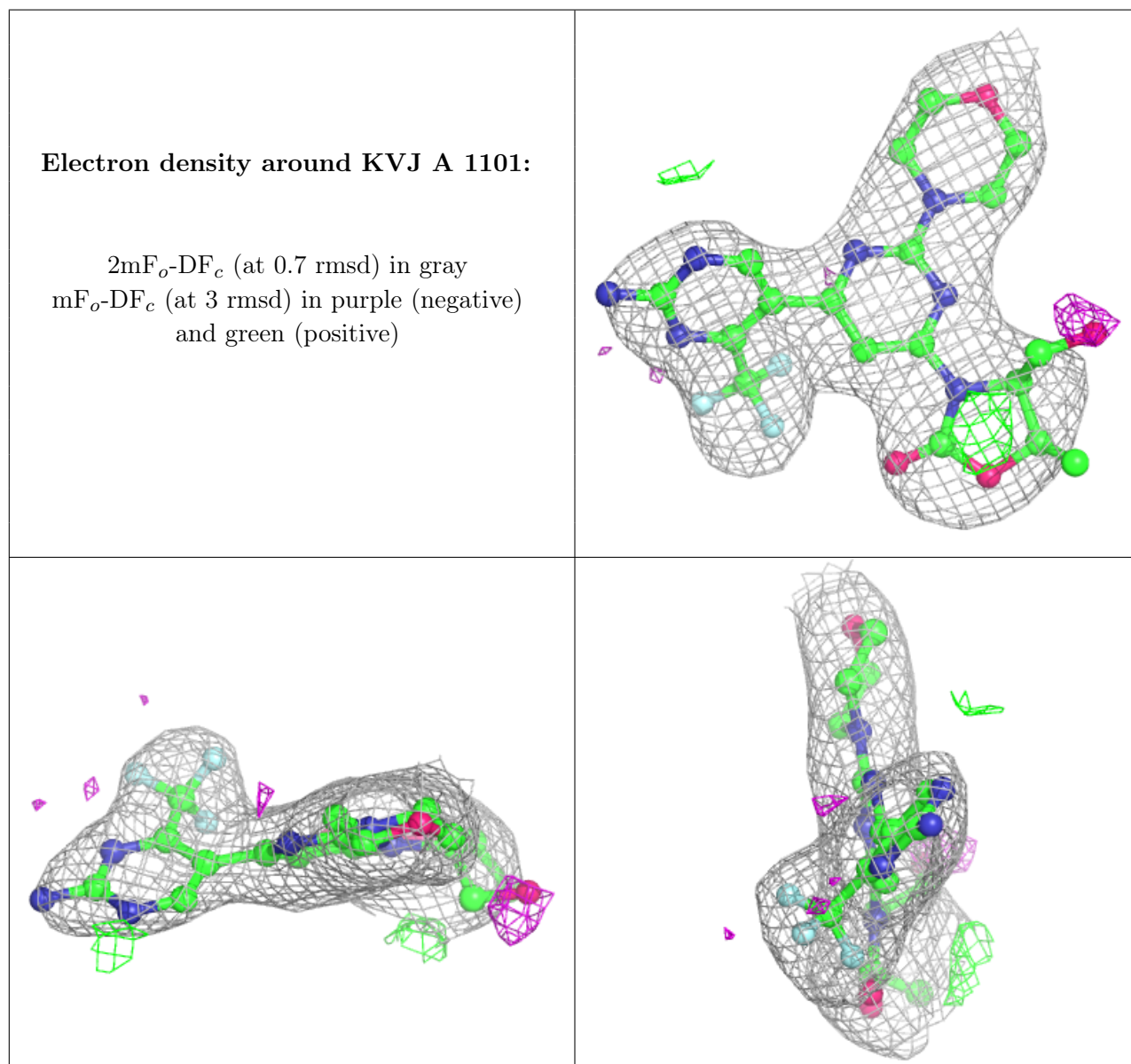
There are no monosaccharides in this entry.

6.4 Ligands [i](#)

In the following table, the Atoms column lists the number of modelled atoms in the group and the number defined in the chemical component dictionary. The B-factors column lists the minimum, median, 95th percentile and maximum values of B factors of atoms in the group. The column labelled 'Q< 0.9' lists the number of atoms with occupancy less than 0.9.

Mol	Type	Chain	Res	Atoms	RSCC	RSR	B-factors(\AA^2)	Q<0.9
3	KVJ	A	1101	32/32	0.94	0.18	62,73,87,100	0

The following is a graphical depiction of the model fit to experimental electron density of all instances of the Ligand of Interest. In addition, ligands with molecular weight > 250 and outliers as shown on the geometry validation Tables will also be included. Each fit is shown from different orientation to approximate a three-dimensional view.



6.5 Other polymers [i](#)

There are no such residues in this entry.