



wwPDB EM Validation Summary Report ⓘ

Feb 5, 2024 – 10:37 AM EST

PDB ID : 8TZL
EMDB ID : EMD-41762
Title : Cryo-EM structure of Vibrio cholerae FtsE/FtsX/EnvC complex, full-length
Authors : Hao, A.; Lee, S.-Y.
Deposited on : 2023-08-27
Resolution : 3.55 Å(reported)
Based on initial model : .

This is a wwPDB EM Validation Summary Report for a publicly released PDB entry.

We welcome your comments at validation@mail.wwpdb.org

A user guide is available at

<https://www.wwpdb.org/validation/2017/EMValidationReportHelp>

with specific help available everywhere you see the ⓘ symbol.

The types of validation reports are described at

<http://www.wwpdb.org/validation/2017/FAQs#types>.

The following versions of software and data (see [references ⓘ](#)) were used in the production of this report:

EMDB validation analysis : 0.0.1.dev70
Mogul : 1.8.5 (274361), CSD as541be (2020)
MolProbity : 4.02b-467
buster-report : 1.1.7 (2018)
Percentile statistics : 20191225.v01 (using entries in the PDB archive December 25th 2019)
MapQ : 1.9.9
Ideal geometry (proteins) : Engh & Huber (2001)
Ideal geometry (DNA, RNA) : Parkinson et al. (1996)
Validation Pipeline (wwPDB-VP) : 2.36

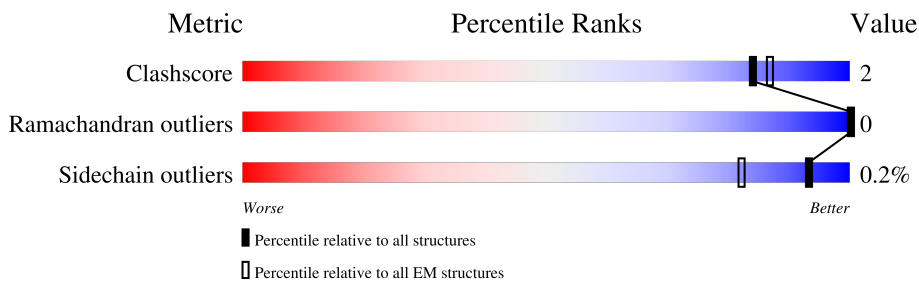
1 Overall quality at a glance

The following experimental techniques were used to determine the structure:

ELECTRON MICROSCOPY

The reported resolution of this entry is 3.55 Å.

Percentile scores (ranging between 0-100) for global validation metrics of the entry are shown in the following graphic. The table shows the number of entries on which the scores are based.



Metric	Whole archive (#Entries)	EM structures (#Entries)
Clashscore	158937	4297
Ramachandran outliers	154571	4023
Sidechain outliers	154315	3826

The table below summarises the geometric issues observed across the polymeric chains and their fit to the map. The red, orange, yellow and green segments of the bar indicate the fraction of residues that contain outliers for ≥ 3 , 2, 1 and 0 types of geometric quality criteria respectively. A grey segment represents the fraction of residues that are not modelled. The numeric value for each fraction is indicated below the corresponding segment, with a dot representing fractions $\leq 5\%$. The upper red bar (where present) indicates the fraction of residues that have poor fit to the EM map (all-atom inclusion $< 40\%$). The numeric value is given above the bar.

Mol	Chain	Length	Quality of chain
1	A	232	
1	B	232	
2	C	330	
2	D	330	
3	E	382	

2 Entry composition [i](#)

There are 5 unique types of molecules in this entry. The entry contains 18875 atoms, of which 9042 are hydrogens and 0 are deuteriums.

In the tables below, the AltConf column contains the number of residues with at least one atom in alternate conformation and the Trace column contains the number of residues modelled with at most 2 atoms.

- Molecule 1 is a protein called Cell division ATP-binding protein FtsE.

Mol	Chain	Residues	Atoms					AltConf	Trace	
			Total	C	H	N	O			S
1	A	220	Total	C	H	N	O	S	0	0
			3494	1082	1769	332	306	5		
1	B	220	Total	C	H	N	O	S	0	0
			3494	1082	1769	332	306	5		

There are 18 discrepancies between the modelled and reference sequences:

Chain	Residue	Modelled	Actual	Comment	Reference
A	2	PRO	-	expression tag	UNP A0A085R4L6
A	3	ALA	-	expression tag	UNP A0A085R4L6
A	4	LEU	-	expression tag	UNP A0A085R4L6
A	5	SER	-	expression tag	UNP A0A085R4L6
A	6	GLY	-	expression tag	UNP A0A085R4L6
A	7	GLY	-	expression tag	UNP A0A085R4L6
A	8	ASP	-	expression tag	UNP A0A085R4L6
A	9	GLY	-	expression tag	UNP A0A085R4L6
A	10	VAL	-	expression tag	UNP A0A085R4L6
B	2	PRO	-	expression tag	UNP A0A085R4L6
B	3	ALA	-	expression tag	UNP A0A085R4L6
B	4	LEU	-	expression tag	UNP A0A085R4L6
B	5	SER	-	expression tag	UNP A0A085R4L6
B	6	GLY	-	expression tag	UNP A0A085R4L6
B	7	GLY	-	expression tag	UNP A0A085R4L6
B	8	ASP	-	expression tag	UNP A0A085R4L6
B	9	GLY	-	expression tag	UNP A0A085R4L6
B	10	VAL	-	expression tag	UNP A0A085R4L6

- Molecule 2 is a protein called Cell division protein FtsX.

Mol	Chain	Residues	Atoms					AltConf	Trace	
			Total	C	H	N	O			S
2	C	304	Total	C	H	N	O	S	0	0
			4369	1435	2177	367	382	8		

Continued on next page...

Continued from previous page...

Mol	Chain	Residues	Atoms					AltConf	Trace	
2	D	304	Total	C	H	N	O	S	0	0
			4359	1434	2158	373	385	9		

- Molecule 3 is a protein called Peptidase M23.

Mol	Chain	Residues	Atoms					AltConf	Trace
3	E	350	Total	C	H	N	O	0	0
			3103	1164	1169	385	385		

There are 12 discrepancies between the modelled and reference sequences:

Chain	Residue	Modelled	Actual	Comment	Reference
E	20	HIS	ARG	conflict	UNP A0A7Z7YE94
E	171	THR	ALA	conflict	UNP A0A7Z7YE94
E	172	GLU	ASP	conflict	UNP A0A7Z7YE94
E	175	SER	ALA	conflict	UNP A0A7Z7YE94
E	176	ASN	SER	conflict	UNP A0A7Z7YE94
E	178	LYS	GLN	conflict	UNP A0A7Z7YE94
E	182	THR	ALA	conflict	UNP A0A7Z7YE94
E	222	ASN	ASP	conflict	UNP A0A7Z7YE94
E	224	THR	VAL	conflict	UNP A0A7Z7YE94
E	234	THR	LYS	conflict	UNP A0A7Z7YE94
E	344	THR	ILE	conflict	UNP A0A7Z7YE94
E	345	THR	ALA	conflict	UNP A0A7Z7YE94

- Molecule 4 is MAGNESIUM ION (three-letter code: MG) (formula: Mg) (labeled as "Ligand of Interest" by depositor).

Mol	Chain	Residues	Atoms		AltConf
4	A	1	Total	Mg	0
			1	1	
4	B	1	Total	Mg	0
			1	1	

- Molecule 5 is ADENOSINE-5'-DIPHOSPHATE (three-letter code: ADP) (formula: C₁₀H₁₅N₅O₁₀P₂) (labeled as "Ligand of Interest" by depositor).

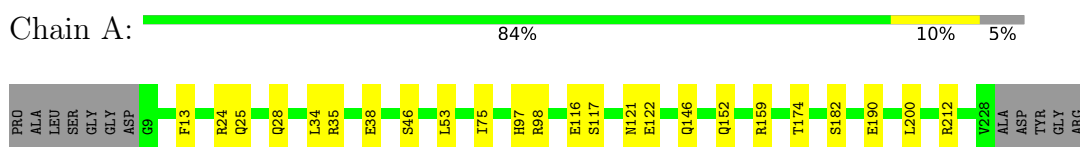


Mol	Chain	Residues	Atoms					AltConf
			Total	C	N	O	P	
5	A	1	27	10	5	10	2	0
5	B	1	27	10	5	10	2	0

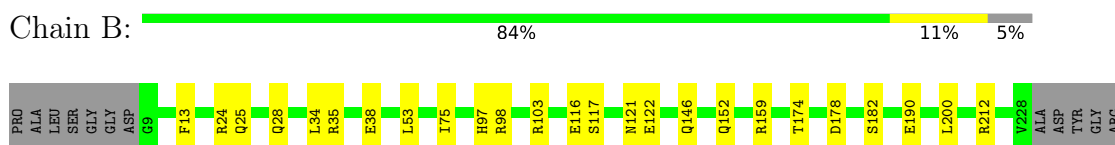
3 Residue-property plots [i](#)

These plots are drawn for all protein, RNA, DNA and oligosaccharide chains in the entry. The first graphic for a chain summarises the proportions of the various outlier classes displayed in the second graphic. The second graphic shows the sequence view annotated by issues in geometry and atom inclusion in map density. Residues are color-coded according to the number of geometric quality criteria for which they contain at least one outlier: green = 0, yellow = 1, orange = 2 and red = 3 or more. A red diamond above a residue indicates a poor fit to the EM map for this residue (all-atom inclusion < 40%). Stretches of 2 or more consecutive residues without any outlier are shown as a green connector. Residues present in the sample, but not in the model, are shown in grey.

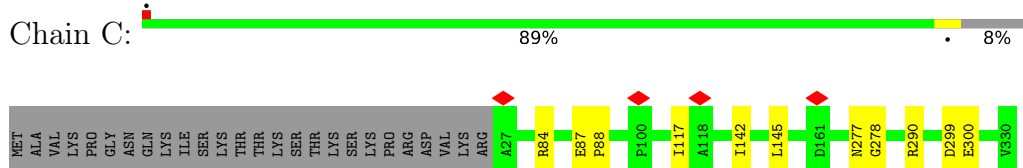
- Molecule 1: Cell division ATP-binding protein FtsE



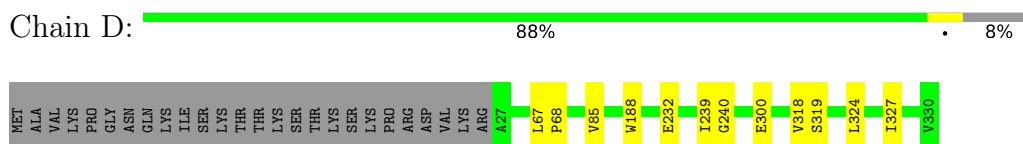
- Molecule 1: Cell division ATP-binding protein FtsE



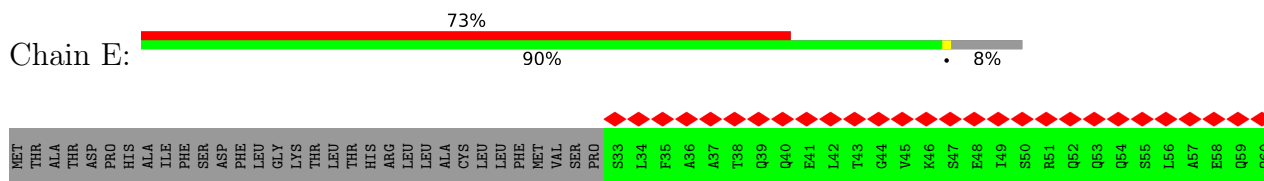
- Molecule 2: Cell division protein FtsX



- Molecule 2: Cell division protein FtsX



- Molecule 3: Peptidase M23



K61	S62	L63	D64	Q65	L66	Q67	Q68	A69	L70	K71	Q72	Q73	E74	L75	G76	I77	N78	S79	I80	E81	N82	Q83	I84	T85	K86	T87	K88	N89	D90	L91	E92	N93	A94	N95	R96	N97	I98	A99	Q100	L101	N102	S103	M104	I105	Q106	E120	R121	L122	L123	Q124	T125	F138	L173	N174	K178					
Q179	R180	Q181	T182	E183	R184	E185	Q186	I187	E188	K189	L190	L191	A192	E193	Q194	T195	Q196	Q197	R198	D199	K200	L201	A202	K203	T204	Q205	S206	E207	R208	K209	Q210	T211	V212	K213	K214	E215	I216	E217	S217	S218	I219	S220	G221	N222	K223	T224	Y225	L226	A227	E228	L229	Q230	R231	N232	E233	T234	R235	L236	K237	A238
E239	I240	A241	K242	A243	A244	K245	R246	N247	A248	V249	L250	M251	N252	G253	I254	A255	S256	Q257	R258	G259	K260	L261	P262	W263	P264	L265	K266	G267	R268	V269	L270	H271	N272	F273	G274	E275	R276	Q277	T278	G279	Q280	I281	D282	W283	K284	G285	L286	V287	I288	D289	A290	N291	Y292	G293	Q294	E295	V296	K297	A298	
V299	Y300	P301	G302	T303	I304	V305	F306	A307	E308	Y309	L310	R311	G312	Y313	G314	L315	V316	V317	L318	L319	D320	H321	G322	K323	G324	D325	M326	T327	L328	Y329	G330	F331	N332	Q333	T334	L335	L336	K337	K338	E339	G340	D341	K342	V343	T344	T345	G346	E347	T348	I349	A350	L351	A352	G353	D354	T355	G356	G357	Q358	
S359	R360	P361	A362	L363	Y364	F365	E366	I367	R368	R369	N370	S371	R372	A373	E374	N375	P376	S377	Q378	W379	L380	Q381	R382																																					

4 Experimental information

Property	Value	Source
EM reconstruction method	SINGLE PARTICLE	Depositor
Imposed symmetry	POINT, Not provided	
Number of particles used	179239	Depositor
Resolution determination method	FSC 0.143 CUT-OFF	Depositor
CTF correction method	PHASE FLIPPING ONLY	Depositor
Microscope	FEI TITAN KRIOS	Depositor
Voltage (kV)	300	Depositor
Electron dose ($e^-/\text{\AA}^2$)	60	Depositor
Minimum defocus (nm)	1000	Depositor
Maximum defocus (nm)	2000	Depositor
Magnification	81000	Depositor
Image detector	GATAN K3 BIOQUANTUM (6k x 4k)	Depositor
Maximum map value	1.516	Depositor
Minimum map value	-0.903	Depositor
Average map value	0.000	Depositor
Map value standard deviation	0.017	Depositor
Recommended contour level	0.2	Depositor
Map size (\AA)	486.00003, 486.00003, 486.00003	wwPDB
Map dimensions	450, 450, 450	wwPDB
Map angles ($^\circ$)	90.0, 90.0, 90.0	wwPDB
Pixel spacing (\AA)	1.08, 1.08, 1.08	Depositor

5 Model quality [i](#)

5.1 Standard geometry [i](#)

Bond lengths and bond angles in the following residue types are not validated in this section: ADP, MG

The Z score for a bond length (or angle) is the number of standard deviations the observed value is removed from the expected value. A bond length (or angle) with $|Z| > 5$ is considered an outlier worth inspection. RMSZ is the root-mean-square of all Z scores of the bond lengths (or angles).

Mol	Chain	Bond lengths		Bond angles	
		RMSZ	# Z >5	RMSZ	# Z >5
1	A	0.25	0/1752	0.52	0/2360
1	B	0.24	0/1752	0.52	0/2360
2	C	0.24	0/2232	0.41	0/3052
2	D	0.24	0/2239	0.42	0/3056
3	E	0.24	0/1941	0.41	0/2673
All	All	0.24	0/9916	0.45	0/13501

There are no bond length outliers.

There are no bond angle outliers.

There are no chirality outliers.

There are no planarity outliers.

5.2 Too-close contacts [i](#)

In the following table, the Non-H and H(model) columns list the number of non-hydrogen atoms and hydrogen atoms in the chain respectively. The H(added) column lists the number of hydrogen atoms added and optimized by MolProbity. The Clashes column lists the number of clashes within the asymmetric unit, whereas Symm-Clashes lists symmetry-related clashes.

Mol	Chain	Non-H	H(model)	H(added)	Clashes	Symm-Clashes
1	A	1725	1769	1769	15	0
1	B	1725	1769	1769	16	0
2	C	2192	2177	2177	6	0
2	D	2201	2158	2157	8	0
3	E	1934	1169	1169	2	0
4	A	1	0	0	0	0
4	B	1	0	0	0	0
5	A	27	0	12	0	0

Continued on next page...

Continued from previous page...

Mol	Chain	Non-H	H(model)	H(added)	Clashes	Symm-Clashes
5	B	27	0	12	0	0
All	All	9833	9042	9065	43	0

The all-atom clashscore is defined as the number of clashes found per 1000 atoms (including hydrogen atoms). The all-atom clashscore for this structure is 2.

The worst 5 of 43 close contacts within the same asymmetric unit are listed below, sorted by their clash magnitude.

Atom-1	Atom-2	Interatomic distance (Å)	Clash overlap (Å)
2:C:277:ASN:OD1	2:C:278:GLY:N	2.19	0.75
3:E:120:GLU:OE2	3:E:124:GLN:NE2	2.28	0.67
1:A:121:ASN:OD1	1:A:122:GLU:N	2.35	0.58
1:B:121:ASN:OD1	1:B:122:GLU:N	2.36	0.58
1:B:35:ARG:NE	1:B:38:GLU:OE2	2.37	0.57

There are no symmetry-related clashes.

5.3 Torsion angles [i](#)

5.3.1 Protein backbone [i](#)

In the following table, the Percentiles column shows the percent Ramachandran outliers of the chain as a percentile score with respect to all PDB entries followed by that with respect to all EM entries.

The Analysed column shows the number of residues for which the backbone conformation was analysed, and the total number of residues.

Mol	Chain	Analysed	Favoured	Allowed	Outliers	Percentiles	
1	A	218/232 (94%)	211 (97%)	7 (3%)	0	100	100
1	B	218/232 (94%)	208 (95%)	10 (5%)	0	100	100
2	C	302/330 (92%)	292 (97%)	10 (3%)	0	100	100
2	D	302/330 (92%)	297 (98%)	5 (2%)	0	100	100
3	E	348/382 (91%)	345 (99%)	3 (1%)	0	100	100
All	All	1388/1506 (92%)	1353 (98%)	35 (2%)	0	100	100

There are no Ramachandran outliers to report.

5.3.2 Protein sidechains [i](#)

In the following table, the Percentiles column shows the percent sidechain outliers of the chain as a percentile score with respect to all PDB entries followed by that with respect to all EM entries.

The Analysed column shows the number of residues for which the sidechain conformation was analysed, and the total number of residues.

Mol	Chain	Analysed	Rotameric	Outliers	Percentiles	
1	A	184/195 (94%)	184 (100%)	0	100	100
1	B	184/195 (94%)	184 (100%)	0	100	100
2	C	206/277 (74%)	206 (100%)	0	100	100
2	D	203/277 (73%)	202 (100%)	1 (0%)	88	95
3	E	53/327 (16%)	52 (98%)	1 (2%)	57	80
All	All	830/1271 (65%)	828 (100%)	2 (0%)	93	98

All (2) residues with a non-rotameric sidechain are listed below:

Mol	Chain	Res	Type
2	D	188	TRP
3	E	138	PHE

Sometimes sidechains can be flipped to improve hydrogen bonding and reduce clashes. There are no such sidechains identified.

5.3.3 RNA [i](#)

There are no RNA molecules in this entry.

5.4 Non-standard residues in protein, DNA, RNA chains [i](#)

There are no non-standard protein/DNA/RNA residues in this entry.

5.5 Carbohydrates [i](#)

There are no monosaccharides in this entry.

5.6 Ligand geometry [i](#)

Of 4 ligands modelled in this entry, 2 are monoatomic - leaving 2 for Mogul analysis.

In the following table, the Counts columns list the number of bonds (or angles) for which Mogul statistics could be retrieved, the number of bonds (or angles) that are observed in the model and the number of bonds (or angles) that are defined in the Chemical Component Dictionary. The Link column lists molecule types, if any, to which the group is linked. The Z score for a bond length (or angle) is the number of standard deviations the observed value is removed from the expected value. A bond length (or angle) with $|Z| > 2$ is considered an outlier worth inspection. RMSZ is the root-mean-square of all Z scores of the bond lengths (or angles).

Mol	Type	Chain	Res	Link	Bond lengths			Bond angles		
					Counts	RMSZ	# Z > 2	Counts	RMSZ	# Z > 2
5	ADP	A	302	4	24,29,29	1.03	3 (12%)	29,45,45	1.34	2 (6%)
5	ADP	B	302	4	24,29,29	1.03	3 (12%)	29,45,45	1.32	2 (6%)

In the following table, the Chirals column lists the number of chiral outliers, the number of chiral centers analysed, the number of these observed in the model and the number defined in the Chemical Component Dictionary. Similar counts are reported in the Torsion and Rings columns. '-' means no outliers of that kind were identified.

Mol	Type	Chain	Res	Link	Chirals	Torsions	Rings
5	ADP	A	302	4	-	4/12/32/32	0/3/3/3
5	ADP	B	302	4	-	4/12/32/32	0/3/3/3

The worst 5 of 6 bond length outliers are listed below:

Mol	Chain	Res	Type	Atoms	Z	Observed(Å)	Ideal(Å)
5	A	302	ADP	C6-N6	3.12	1.45	1.34
5	B	302	ADP	C6-N6	3.11	1.45	1.34
5	B	302	ADP	O4'-C1'	2.11	1.44	1.41
5	A	302	ADP	O4'-C1'	2.05	1.43	1.41
5	B	302	ADP	PA-O5'	2.04	1.67	1.59

All (4) bond angle outliers are listed below:

Mol	Chain	Res	Type	Atoms	Z	Observed(°)	Ideal(°)
5	A	302	ADP	N3-C2-N1	-4.70	121.33	128.68
5	B	302	ADP	N3-C2-N1	-4.67	121.38	128.68
5	A	302	ADP	PA-O3A-PB	-3.16	121.98	132.83
5	B	302	ADP	PA-O3A-PB	-2.91	122.85	132.83

There are no chirality outliers.

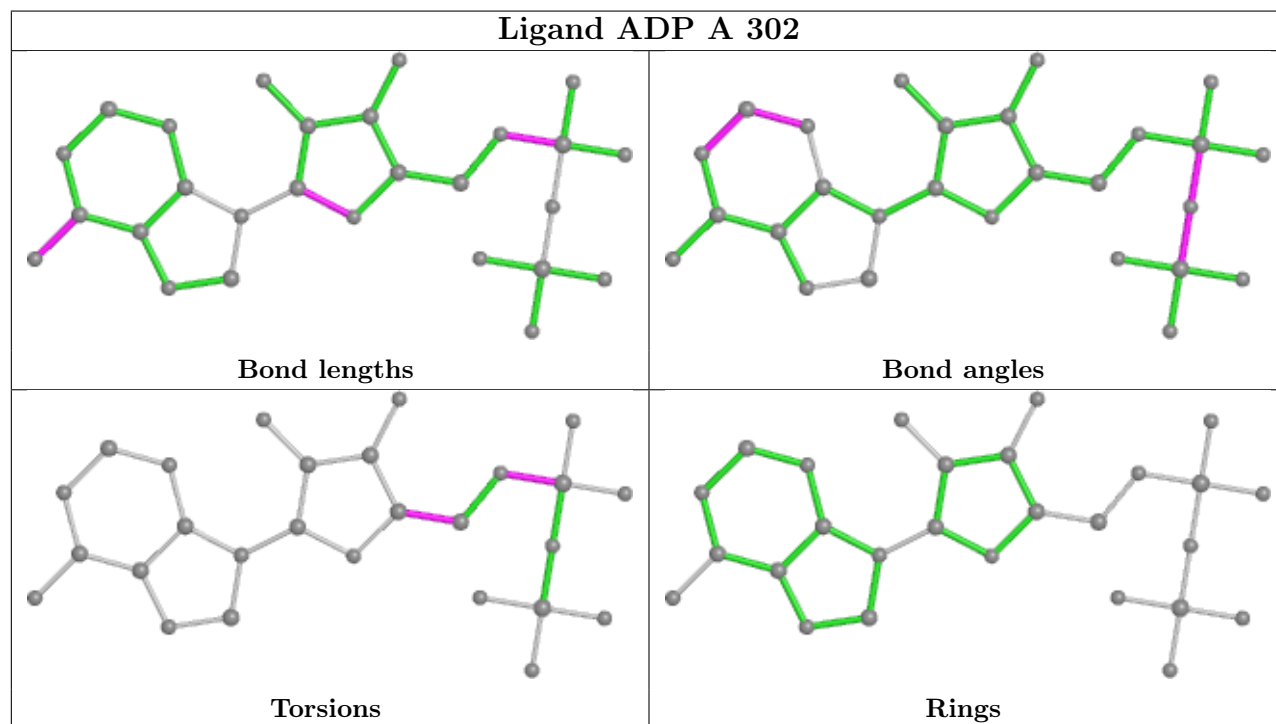
5 of 8 torsion outliers are listed below:

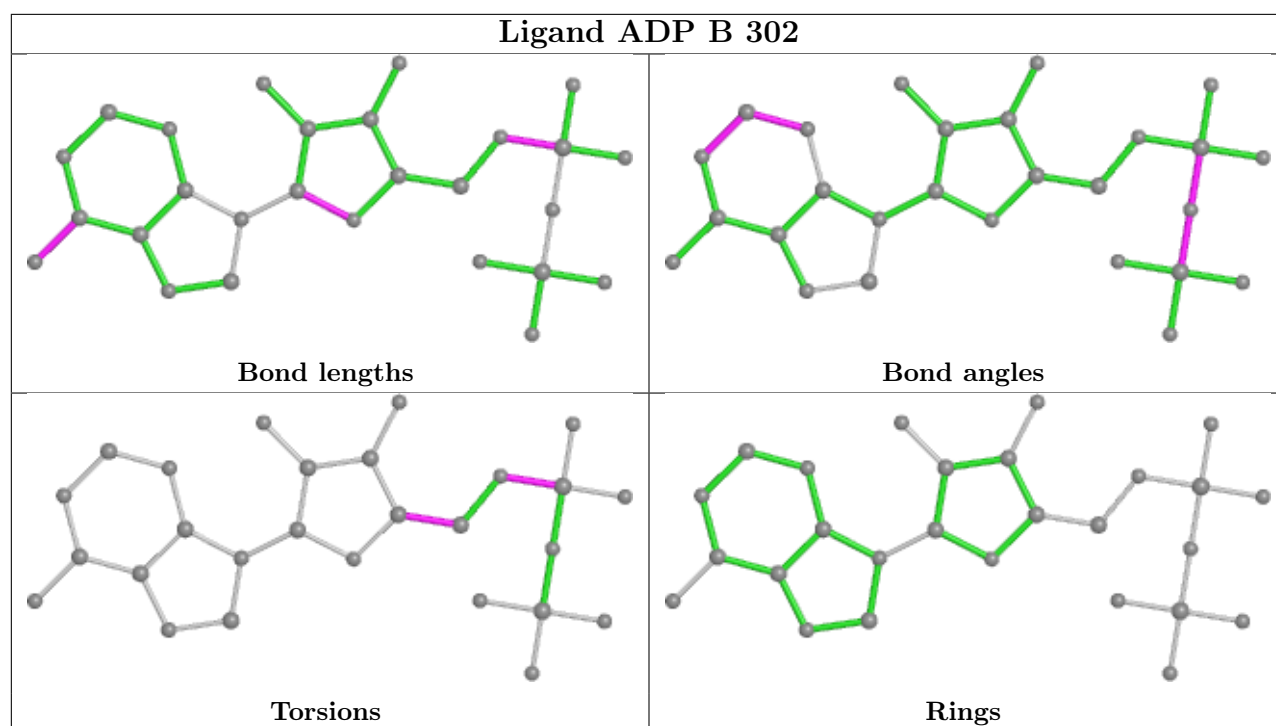
Mol	Chain	Res	Type	Atoms
5	A	302	ADP	C5'-O5'-PA-O1A
5	A	302	ADP	O4'-C4'-C5'-O5'
5	B	302	ADP	C5'-O5'-PA-O1A
5	B	302	ADP	O4'-C4'-C5'-O5'
5	A	302	ADP	C3'-C4'-C5'-O5'

There are no ring outliers.

No monomer is involved in short contacts.

The following is a two-dimensional graphical depiction of Mogul quality analysis of bond lengths, bond angles, torsion angles, and ring geometry for all instances of the Ligand of Interest. In addition, ligands with molecular weight > 250 and outliers as shown on the validation Tables will also be included. For torsion angles, if less than 5% of the Mogul distribution of torsion angles is within 10 degrees of the torsion angle in question, then that torsion angle is considered an outlier. Any bond that is central to one or more torsion angles identified as an outlier by Mogul will be highlighted in the graph. For rings, the root-mean-square deviation (RMSD) between the ring in question and similar rings identified by Mogul is calculated over all ring torsion angles. If the average RMSD is greater than 60 degrees and the minimal RMSD between the ring in question and any Mogul-identified rings is also greater than 60 degrees, then that ring is considered an outlier. The outliers are highlighted in purple. The color gray indicates Mogul did not find sufficient equivalents in the CSD to analyse the geometry.





5.7 Other polymers [i](#)

There are no such residues in this entry.

5.8 Polymer linkage issues [i](#)

There are no chain breaks in this entry.

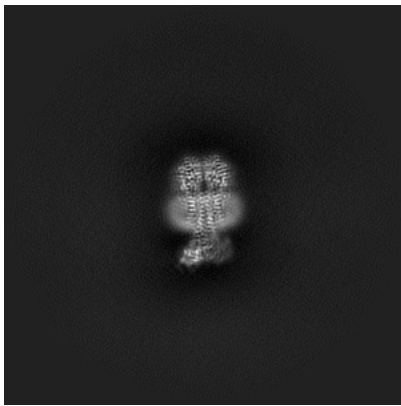
6 Map visualisation [i](#)

This section contains visualisations of the EMDB entry EMD-41762. These allow visual inspection of the internal detail of the map and identification of artifacts.

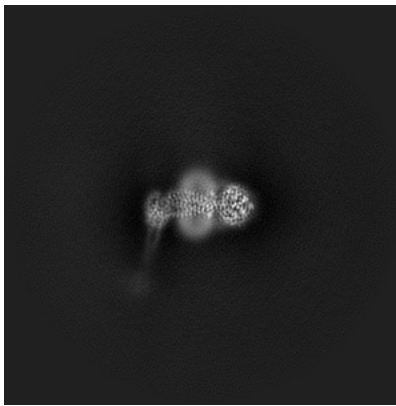
Images derived from a raw map, generated by summing the deposited half-maps, are presented below the corresponding image components of the primary map to allow further visual inspection and comparison with those of the primary map.

6.1 Orthogonal projections [i](#)

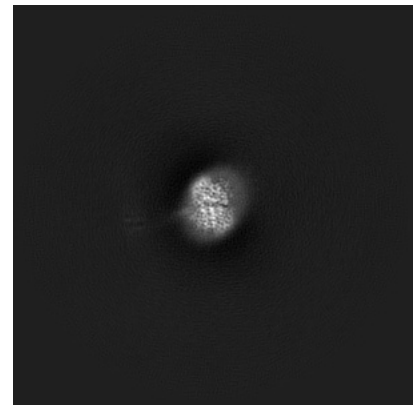
6.1.1 Primary map



X

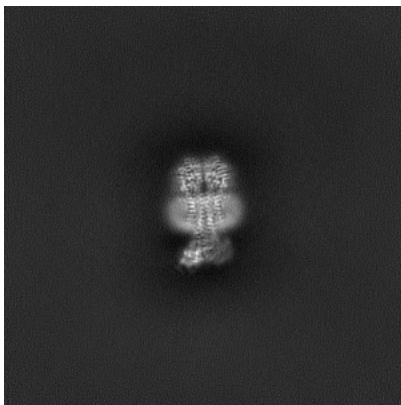


Y

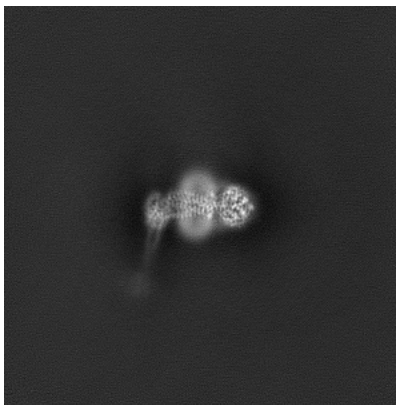


Z

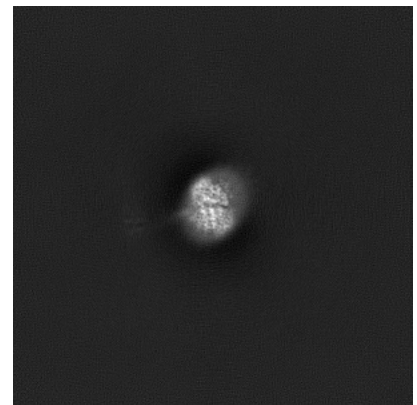
6.1.2 Raw map



X



Y



Z

The images above show the map projected in three orthogonal directions.

6.2 Central slices [i](#)

6.2.1 Primary map



X Index: 225

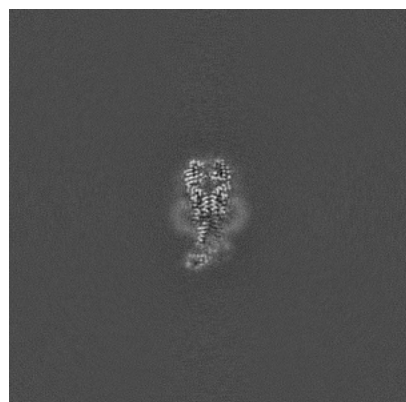


Y Index: 225



Z Index: 225

6.2.2 Raw map



X Index: 225



Y Index: 225

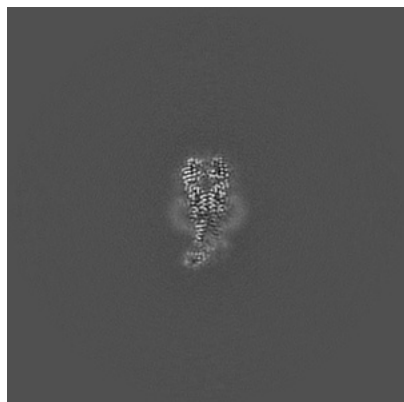


Z Index: 225

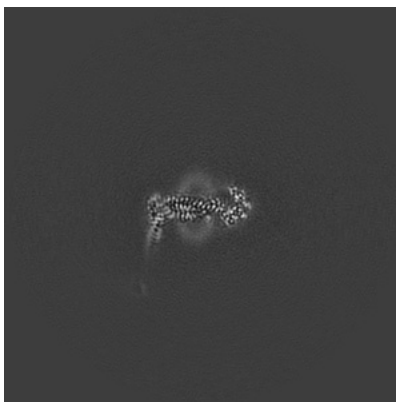
The images above show central slices of the map in three orthogonal directions.

6.3 Largest variance slices [i](#)

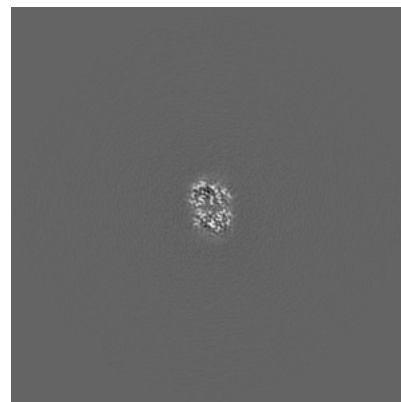
6.3.1 Primary map



X Index: 225

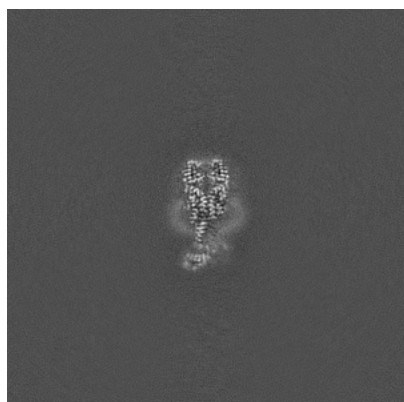


Y Index: 218

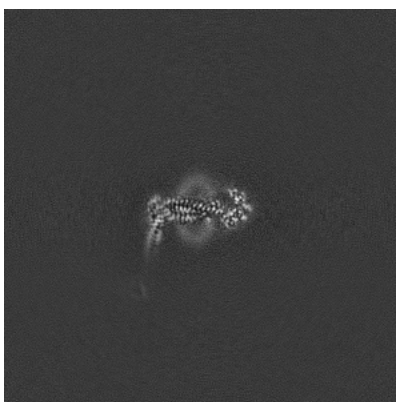


Z Index: 260

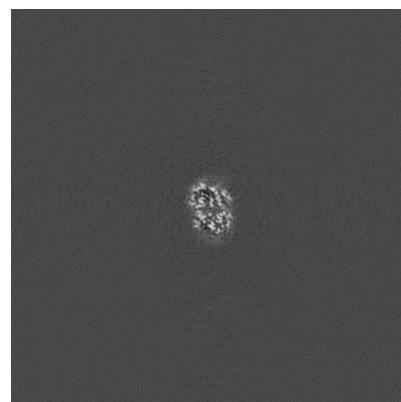
6.3.2 Raw map



X Index: 224



Y Index: 218

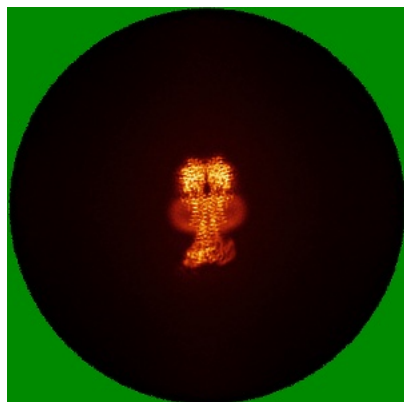


Z Index: 260

The images above show the largest variance slices of the map in three orthogonal directions.

6.4 Orthogonal standard-deviation projections (False-color) [i](#)

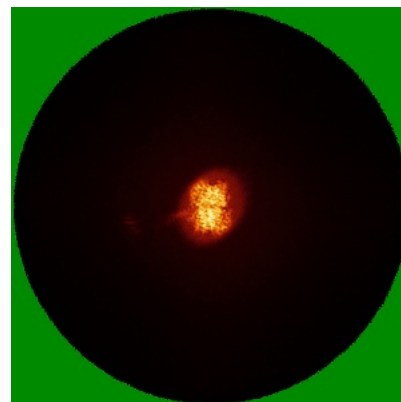
6.4.1 Primary map



X

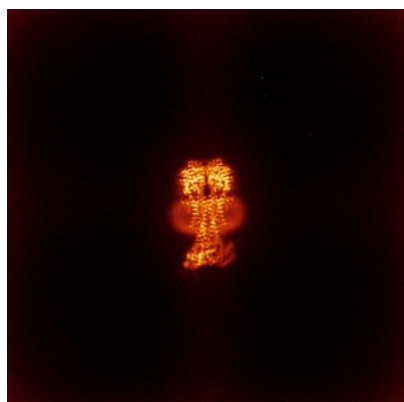


Y

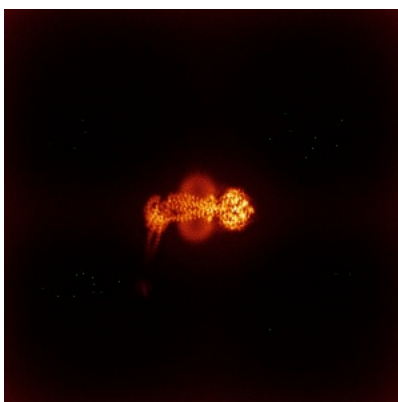


Z

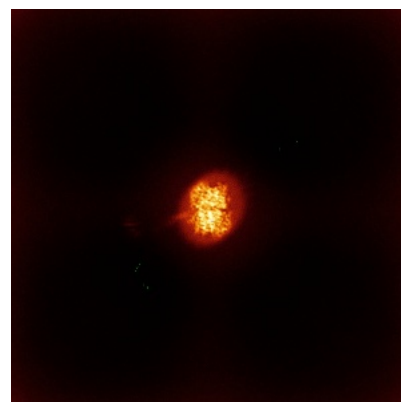
6.4.2 Raw map



X



Y

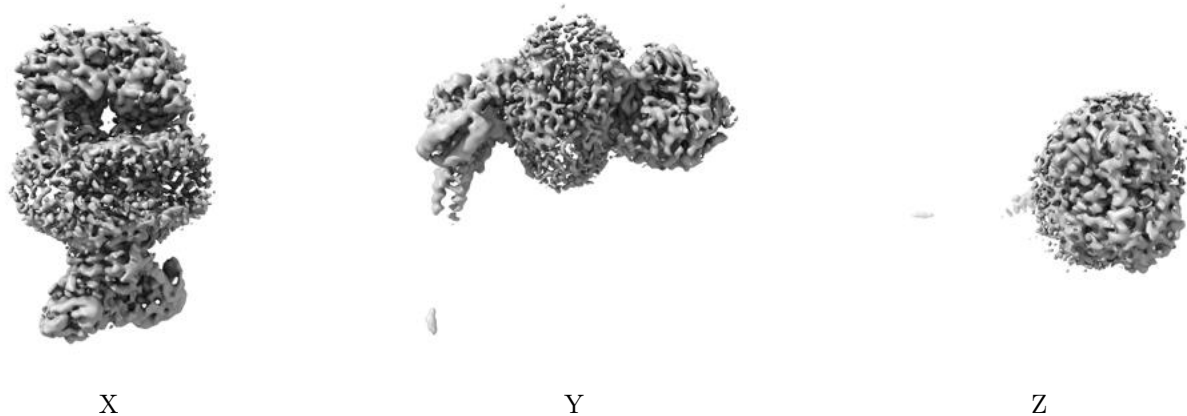


Z

The images above show the map standard deviation projections with false color in three orthogonal directions. Minimum values are shown in green, max in blue, and dark to light orange shades represent small to large values respectively.

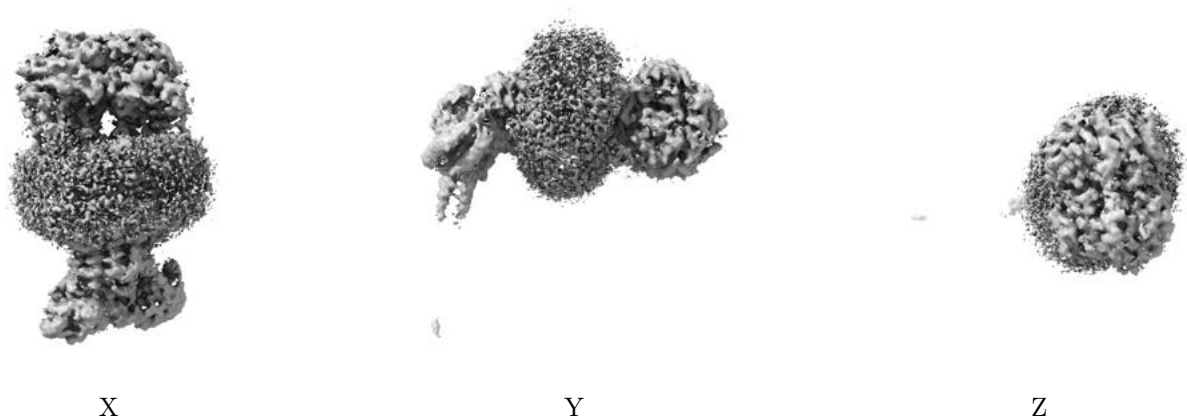
6.5 Orthogonal surface views [i](#)

6.5.1 Primary map



The images above show the 3D surface view of the map at the recommended contour level 0.2. These images, in conjunction with the slice images, may facilitate assessment of whether an appropriate contour level has been provided.

6.5.2 Raw map



These images show the 3D surface of the raw map. The raw map's contour level was selected so that its surface encloses the same volume as the primary map does at its recommended contour level.

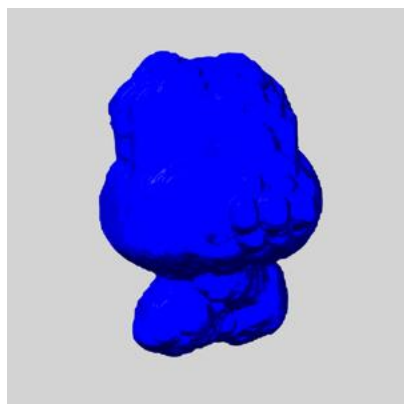
6.6 Mask visualisation [i](#)

This section shows the 3D surface view of the primary map at 50% transparency overlaid with the specified mask at 0% transparency

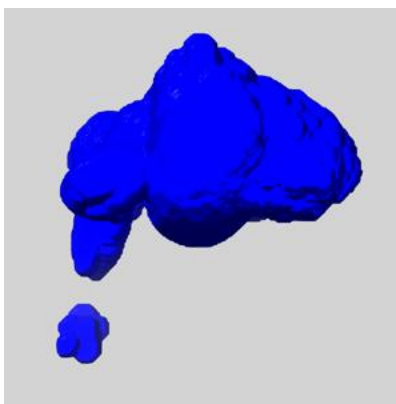
A mask typically either:

- Encompasses the whole structure
- Separates out a domain, a functional unit, a monomer or an area of interest from a larger structure

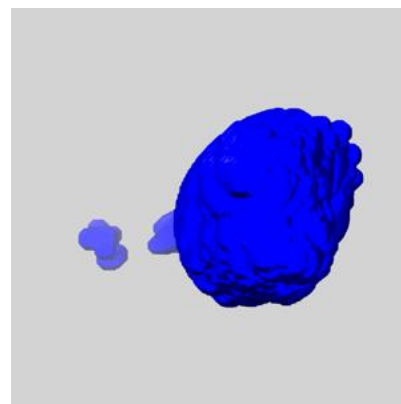
6.6.1 emd_41762_msk_1.map [i](#)



X



Y

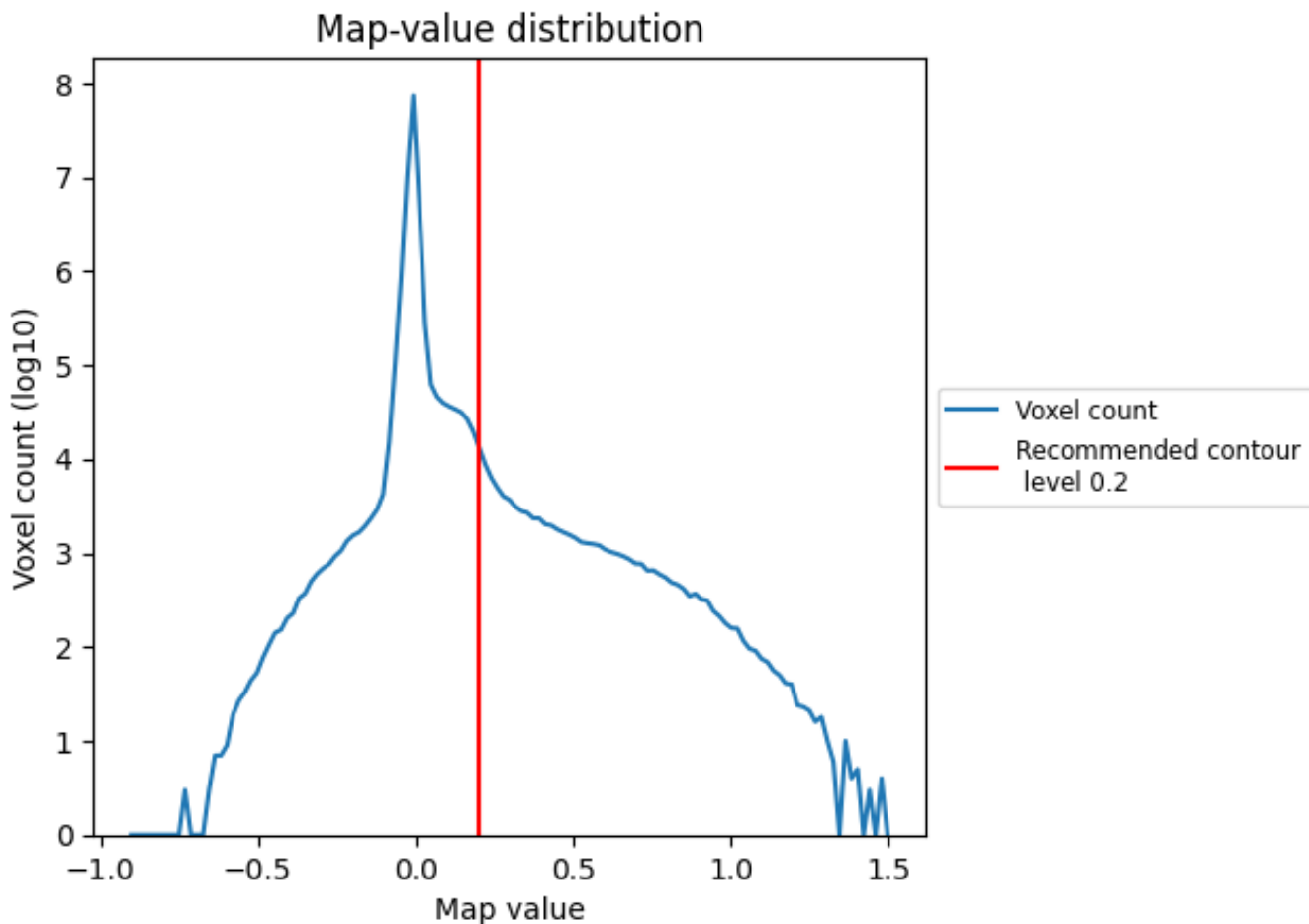


Z

7 Map analysis [i](#)

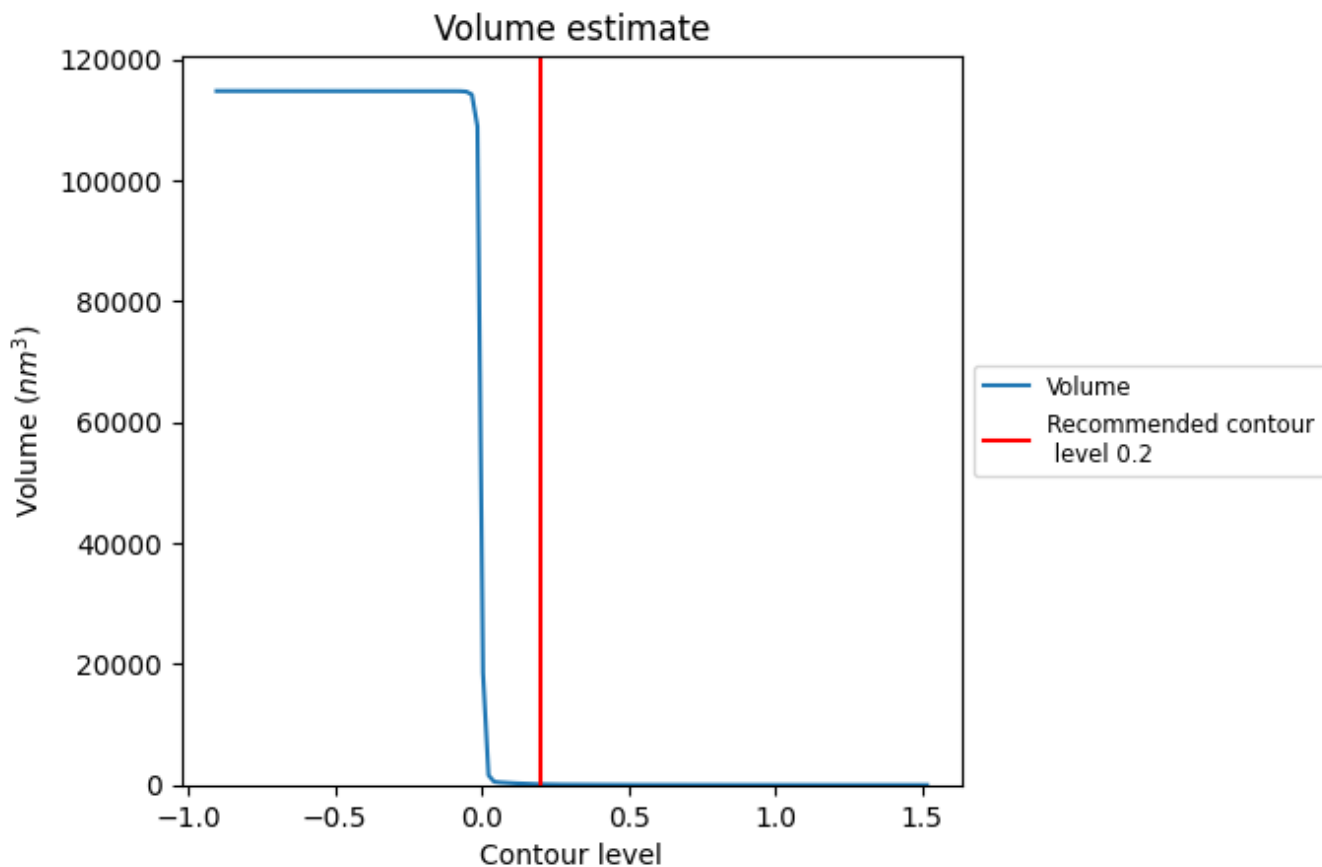
This section contains the results of statistical analysis of the map.

7.1 Map-value distribution [i](#)



The map-value distribution is plotted in 128 intervals along the x-axis. The y-axis is logarithmic. A spike in this graph at zero usually indicates that the volume has been masked.

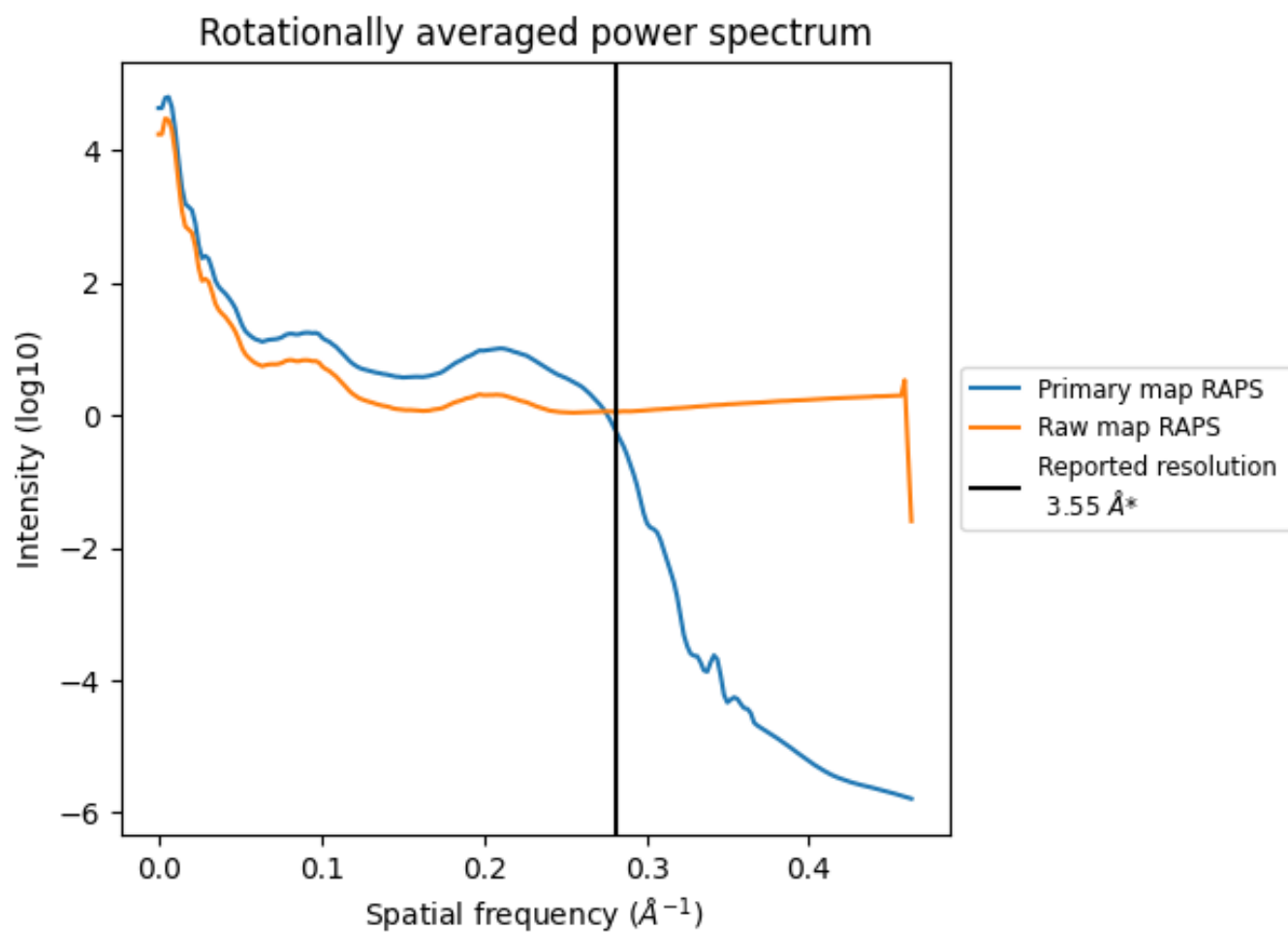
7.2 Volume estimate [i](#)



The volume at the recommended contour level is 107 nm³; this corresponds to an approximate mass of 97 kDa.

The volume estimate graph shows how the enclosed volume varies with the contour level. The recommended contour level is shown as a vertical line and the intersection between the line and the curve gives the volume of the enclosed surface at the given level.

7.3 Rotationally averaged power spectrum i

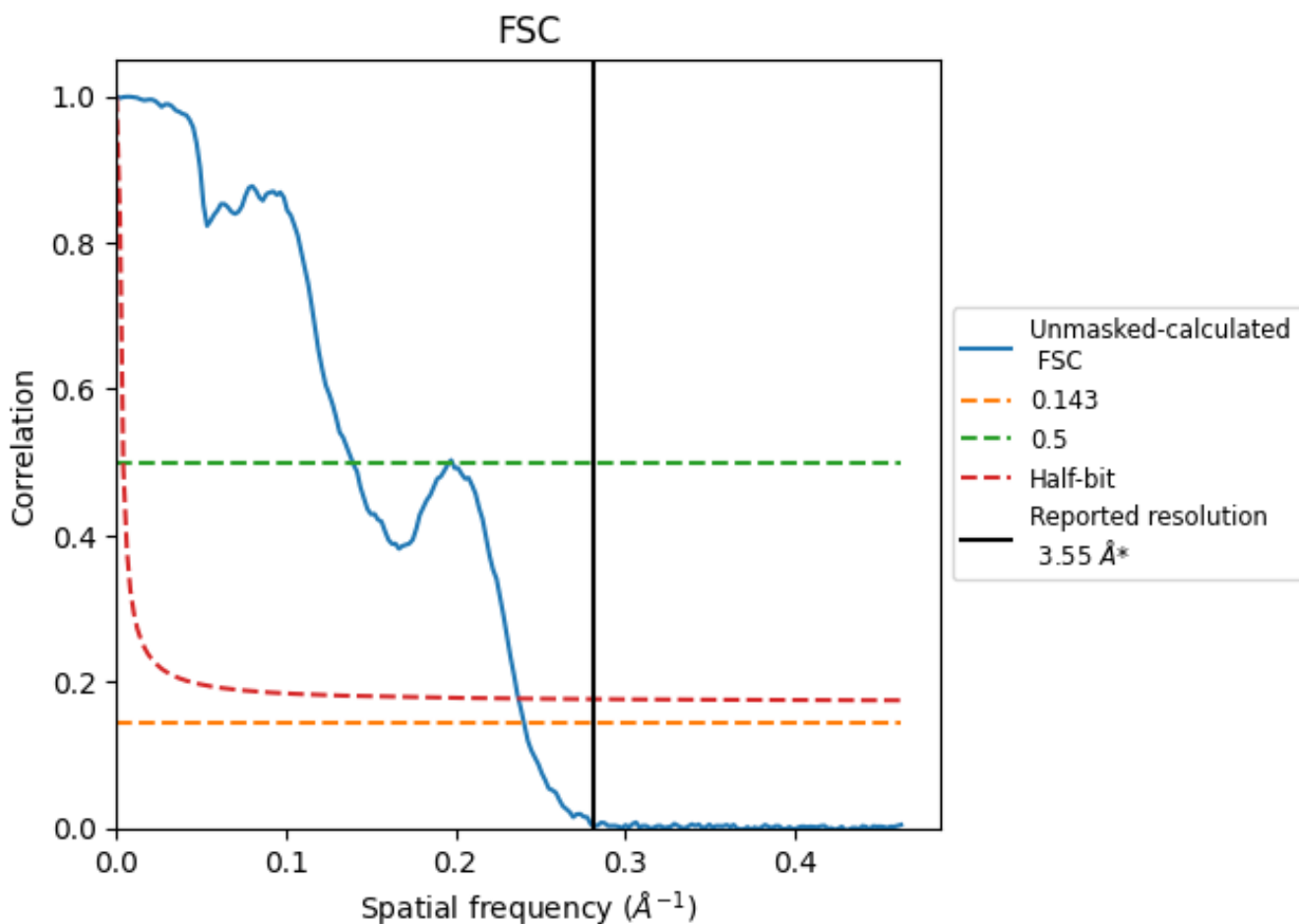


*Reported resolution corresponds to spatial frequency of 0.282 Å⁻¹

8 Fourier-Shell correlation [i](#)

Fourier-Shell Correlation (FSC) is the most commonly used method to estimate the resolution of single-particle and subtomogram-averaged maps. The shape of the curve depends on the imposed symmetry, mask and whether or not the two 3D reconstructions used were processed from a common reference. The reported resolution is shown as a black line. A curve is displayed for the half-bit criterion in addition to lines showing the 0.143 gold standard cut-off and 0.5 cut-off.

8.1 FSC [i](#)



*Reported resolution corresponds to spatial frequency of 0.282 \AA^{-1}

8.2 Resolution estimates [i](#)

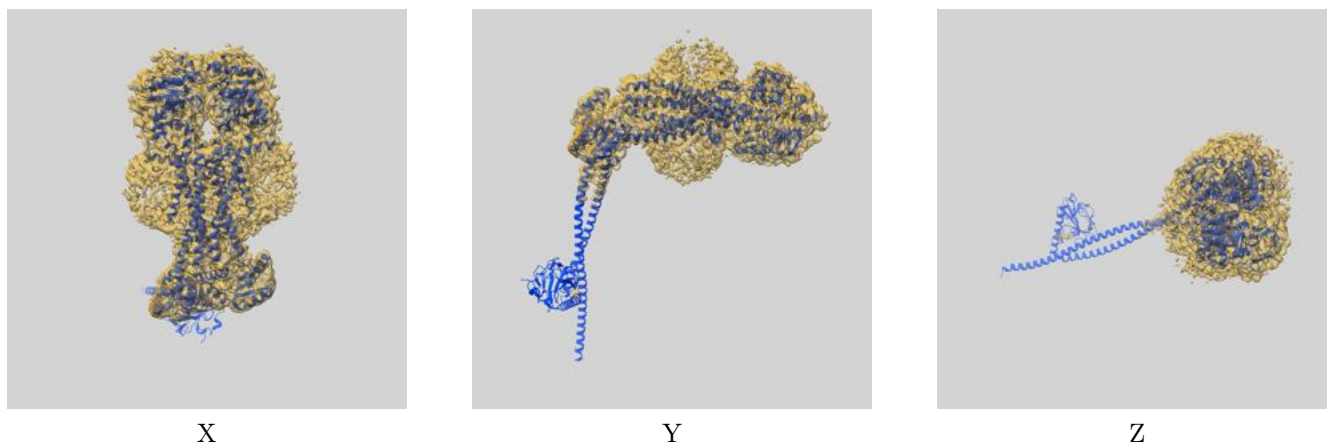
Resolution estimate (Å)	Estimation criterion (FSC cut-off)		
	0.143	0.5	Half-bit
Reported by author	3.55	-	-
Author-provided FSC curve	-	-	-
Unmasked-calculated*	4.16	7.18	4.22

*Resolution estimate based on FSC curve calculated by comparison of deposited half-maps. The value from deposited half-maps intersecting FSC 0.143 CUT-OFF 4.16 differs from the reported value 3.55 by more than 10 %

9 Map-model fit [i](#)

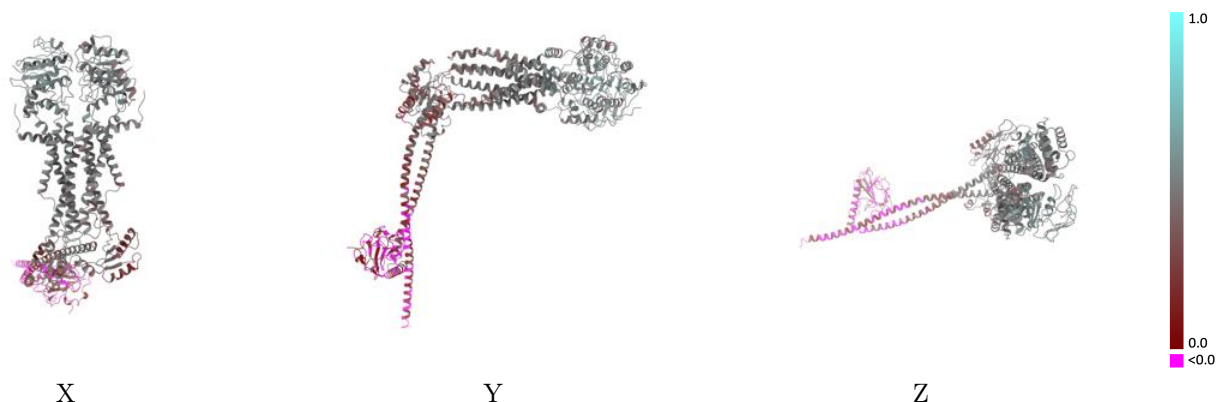
This section contains information regarding the fit between EMDB map EMD-41762 and PDB model 8TZL. Per-residue inclusion information can be found in section 3 on page 6.

9.1 Map-model overlay [i](#)



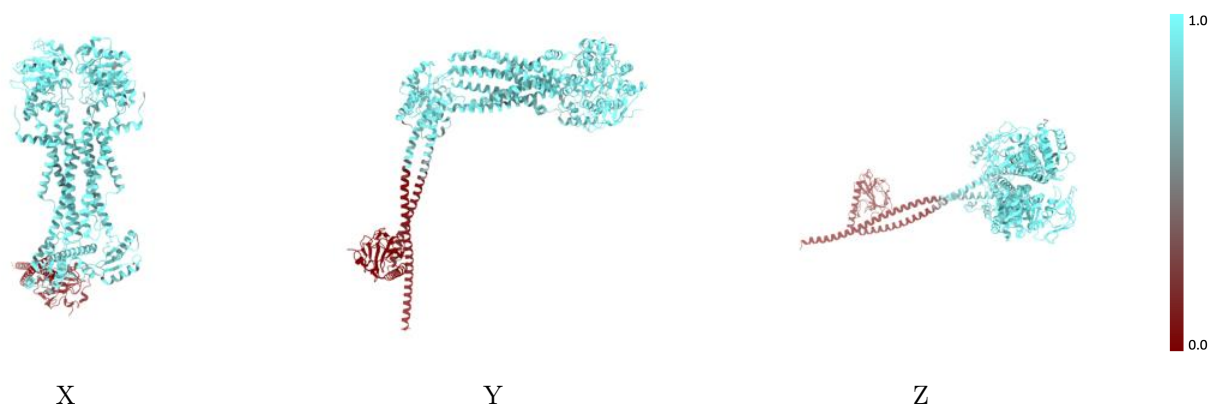
The images above show the 3D surface view of the map at the recommended contour level 0.2 at 50% transparency in yellow overlaid with a ribbon representation of the model coloured in blue. These images allow for the visual assessment of the quality of fit between the atomic model and the map.

9.2 Q-score mapped to coordinate model [\(i\)](#)



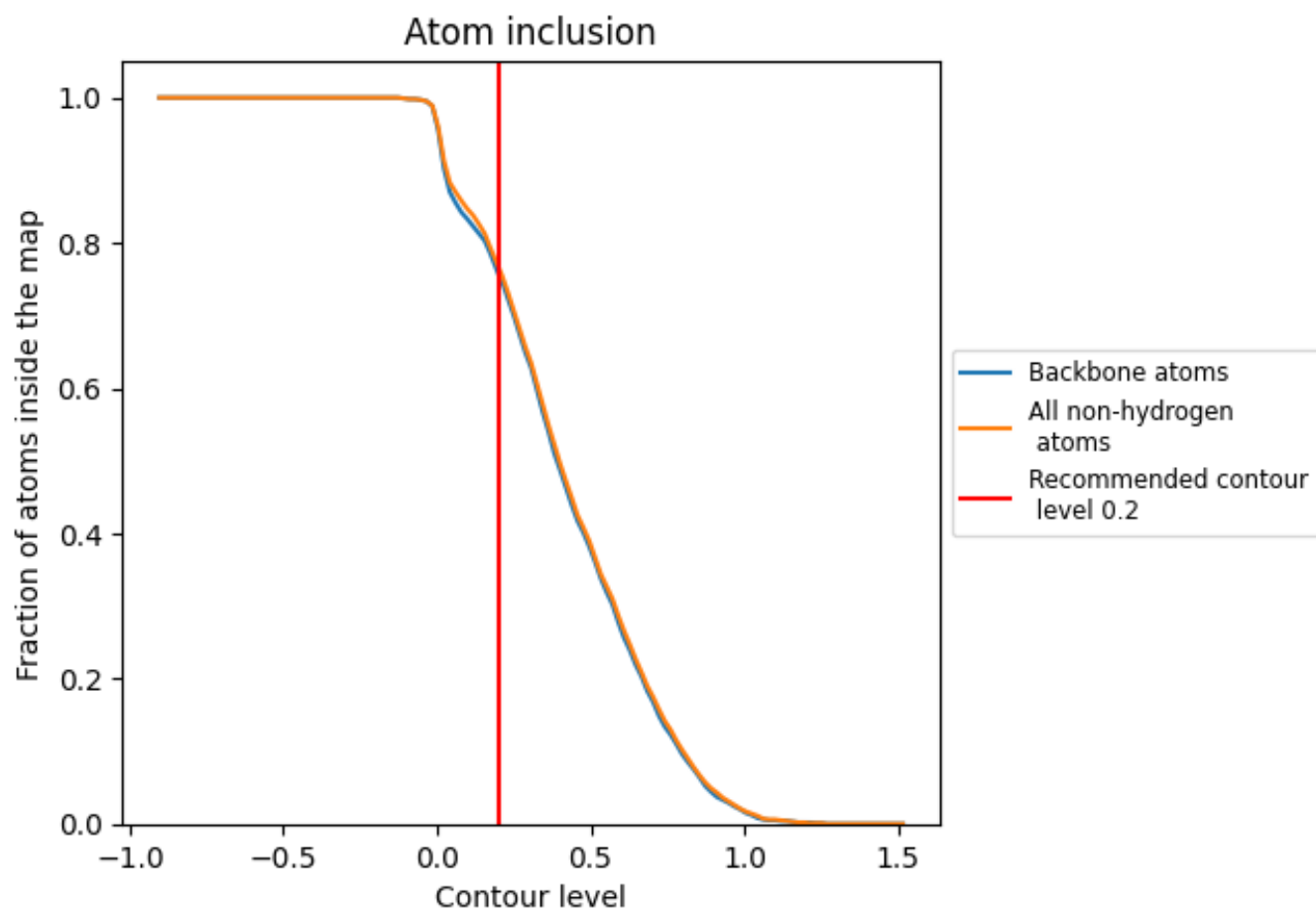
The images above show the model with each residue coloured according to its Q-score. This shows their resolvability in the map with higher Q-score values reflecting better resolvability. Please note: Q-score is calculating the resolvability of atoms, and thus high values are only expected at resolutions at which atoms can be resolved. Low Q-score values may therefore be expected for many entries.

9.3 Atom inclusion mapped to coordinate model [\(i\)](#)



The images above show the model with each residue coloured according to its atom inclusion. This shows to what extent they are inside the map at the recommended contour level (0.2).









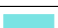



9.4 Atom inclusion [i](#)



At the recommended contour level, 76% of all backbone atoms, 77% of all non-hydrogen atoms, are inside the map.

9.5 Map-model fit summary

The table lists the average atom inclusion at the recommended contour level (0.2) and Q-score for the entire model and for each chain.

Chain	Atom inclusion	Q-score
All	 0.7670	 0.4080
A	 0.9440	 0.4960
B	 0.9350	 0.4990
C	 0.8790	 0.4330
D	 0.8940	 0.4560
E	 0.2540	 0.1600

