



# Full wwPDB X-ray Structure Validation Report ⓘ

Aug 26, 2024 – 10:18 AM EDT

PDB ID : 8U0F  
Title : Bacterial fluorescent protein  
Authors : Gully, B.S.; Rossjohn, J.  
Deposited on : 2023-08-29  
Resolution : 2.07 Å(reported)

This is a Full wwPDB X-ray Structure Validation Report for a publicly released PDB entry.

We welcome your comments at [validation@mail.wwpdb.org](mailto:validation@mail.wwpdb.org)

A user guide is available at

<https://www.wwpdb.org/validation/2017/XrayValidationReportHelp>

with specific help available everywhere you see the ⓘ symbol.

The types of validation reports are described at

<http://www.wwpdb.org/validation/2017/FAQs#types>.

---

The following versions of software and data (see [references ⓘ](#)) were used in the production of this report:

MolProbity : 4.02b-467  
Mogul : 2022.3.0, CSD as543be (2022)  
Xtriage (Phenix) : 1.20.1  
EDS : 3.0  
buster-report : 1.1.7 (2018)  
Percentile statistics : 20231227.v01 (using entries in the PDB archive December 27th 2023)  
CCP4 : 9.0.002 (Gargrove)  
Density-Fitness : 1.0.11  
Ideal geometry (proteins) : Engh & Huber (2001)  
Ideal geometry (DNA, RNA) : Parkinson et al. (1996)  
Validation Pipeline (wwPDB-VP) : 2.38.3

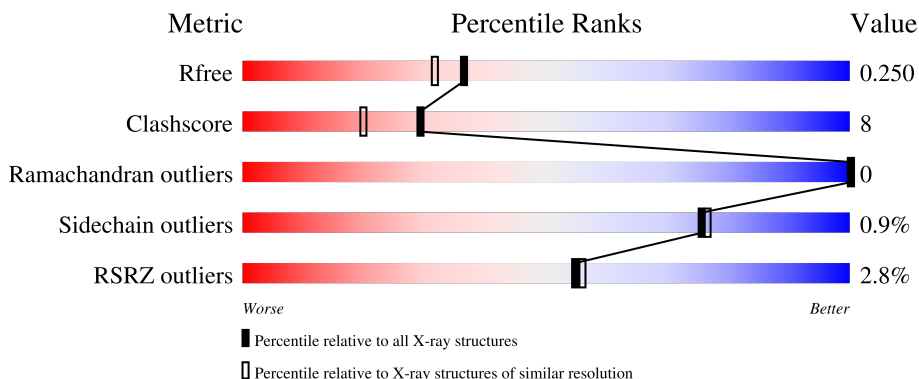
# 1 Overall quality at a glance

The following experimental techniques were used to determine the structure:

*X-RAY DIFFRACTION*

The reported resolution of this entry is 2.07 Å.

Percentile scores (ranging between 0-100) for global validation metrics of the entry are shown in the following graphic. The table shows the number of entries on which the scores are based.



Metric	Whole archive (#Entries)	Similar resolution (#Entries, resolution range(Å))
$R_{free}$	164625	3436 (2.08-2.04)
Clashscore	180529	3661 (2.08-2.04)
Ramachandran outliers	177936	3649 (2.08-2.04)
Sidechain outliers	177891	3649 (2.08-2.04)
RSRZ outliers	164620	3436 (2.08-2.04)

The table below summarises the geometric issues observed across the polymeric chains and their fit to the electron density. The red, orange, yellow and green segments of the lower bar indicate the fraction of residues that contain outliers for  $\geq 3$ , 2, 1 and 0 types of geometric quality criteria respectively. A grey segment represents the fraction of residues that are not modelled. The numeric value for each fraction is indicated below the corresponding segment, with a dot representing fractions  $\leq 5\%$ . The upper red bar (where present) indicates the fraction of residues that have poor fit to the electron density. The numeric value is given above the bar.

Mol	Chain	Length	Quality of chain
1	B	164	 3% 85% 15%
1	K	164	 2% 85% 15%
2	C	176	 2% 86% 14%
2	L	176	 4% 90% 9%

## 2 Entry composition [i](#)

There are 5 unique types of molecules in this entry. The entry contains 5748 atoms, of which 0 are hydrogens and 0 are deuteriums.

In the tables below, the ZeroOcc column contains the number of atoms modelled with zero occupancy, the AltConf column contains the number of residues with at least one atom in alternate conformation and the Trace column contains the number of residues modelled with at most 2 atoms.

- Molecule 1 is a protein called Bacterial fluorescent protein alpha.

Mol	Chain	Residues	Atoms					ZeroOcc	AltConf	Trace
			Total	C	N	O	S			
1	B	164	1243	774	217	245	7	0	0	0
1	K	164	1243	774	217	245	7	0	0	0

There are 16 discrepancies between the modelled and reference sequences:

Chain	Residue	Modelled	Actual	Comment	Reference
B	34	ALA	SER	conflict	UNP Q1AH74
B	35	ALA	GLY	conflict	UNP Q1AH74
B	36	SER	ALA	conflict	UNP Q1AH74
B	46	GLY	SER	conflict	UNP Q1AH74
B	76	GLN	THR	conflict	UNP Q1AH74
B	109	CYS	GLY	conflict	UNP Q1AH74
B	124	SER	ALA	conflict	UNP Q1AH74
B	125	SER	ALA	conflict	UNP Q1AH74
K	34	ALA	SER	conflict	UNP Q1AH74
K	35	ALA	GLY	conflict	UNP Q1AH74
K	36	SER	ALA	conflict	UNP Q1AH74
K	46	GLY	SER	conflict	UNP Q1AH74
K	76	GLN	THR	conflict	UNP Q1AH74
K	109	CYS	GLY	conflict	UNP Q1AH74
K	124	SER	ALA	conflict	UNP Q1AH74
K	125	SER	ALA	conflict	UNP Q1AH74

- Molecule 2 is a protein called Bacterial fluorescent protein beta.

Mol	Chain	Residues	Atoms					ZeroOcc	AltConf	Trace
			Total	C	N	O	S			
2	C	176	1275	783	222	258	12	1	0	0
2	L	176	1275	783	222	258	12	1	0	0

There are 66 discrepancies between the modelled and reference sequences:

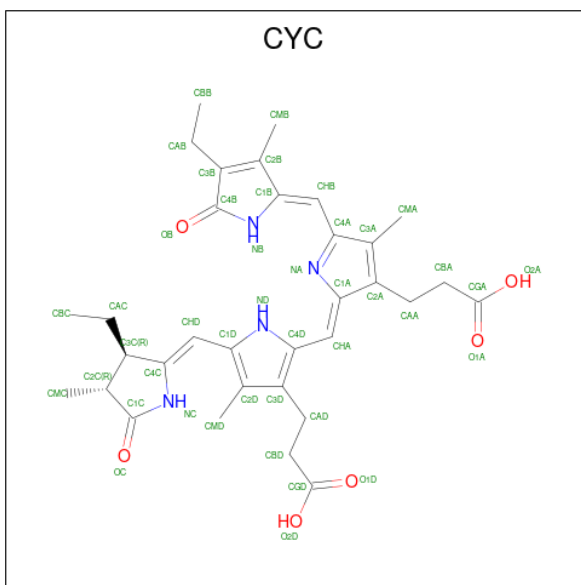
Chain	Residue	Modelled	Actual	Comment	Reference
C	1	MET	-	expression tag	UNP Q1AH60
C	2	LEU	-	expression tag	UNP Q1AH60
C	3	ASP	-	expression tag	UNP Q1AH60
C	4	ALA	-	expression tag	UNP Q1AH60
C	5	PHE	-	expression tag	UNP Q1AH60
C	6	SER	-	expression tag	UNP Q1AH60
C	7	ARG	-	expression tag	UNP Q1AH60
C	8	VAL	-	expression tag	UNP Q1AH60
C	9	VAL	-	expression tag	UNP Q1AH60
C	10	VAL	-	expression tag	UNP Q1AH60
C	11	ASN	-	expression tag	UNP Q1AH60
C	14	SER	ALA	conflict	UNP Q1AH60
C	22	SER	GLY	conflict	UNP Q1AH60
C	25	GLN	GLY	conflict	UNP Q1AH60
C	29	THR	SER	conflict	UNP Q1AH60
C	33	ASP	GLU	conflict	UNP Q1AH60
C	68	ALA	SER	conflict	UNP Q1AH60
C	93	THR	VAL	conflict	UNP Q1AH60
C	99	ALA	SER	conflict	UNP Q1AH60
C	102	SER	ALA	conflict	UNP Q1AH60
C	127	SER	THR	conflict	UNP Q1AH60
C	136	SER	ALA	conflict	UNP Q1AH60
C	142	ILE	VAL	conflict	UNP Q1AH60
C	143	SER	THR	conflict	UNP Q1AH60
C	150	LYS	THR	conflict	UNP Q1AH60
C	151	MET	ILE	conflict	UNP Q1AH60
C	152	ALA	GLU	conflict	UNP Q1AH60
C	153	THR	ILE	conflict	UNP Q1AH60
C	154	THR	ALA	conflict	UNP Q1AH60
C	155	ASP	ALA	conflict	UNP Q1AH60
C	162	SER	ALA	conflict	UNP Q1AH60
C	171	LYS	ARG	conflict	UNP Q1AH60
C	176	ILE	VAL	conflict	UNP Q1AH60
L	1	MET	-	expression tag	UNP Q1AH60
L	2	LEU	-	expression tag	UNP Q1AH60
L	3	ASP	-	expression tag	UNP Q1AH60
L	4	ALA	-	expression tag	UNP Q1AH60
L	5	PHE	-	expression tag	UNP Q1AH60
L	6	SER	-	expression tag	UNP Q1AH60
L	7	ARG	-	expression tag	UNP Q1AH60
L	8	VAL	-	expression tag	UNP Q1AH60
L	9	VAL	-	expression tag	UNP Q1AH60

*Continued on next page...*

Continued from previous page...

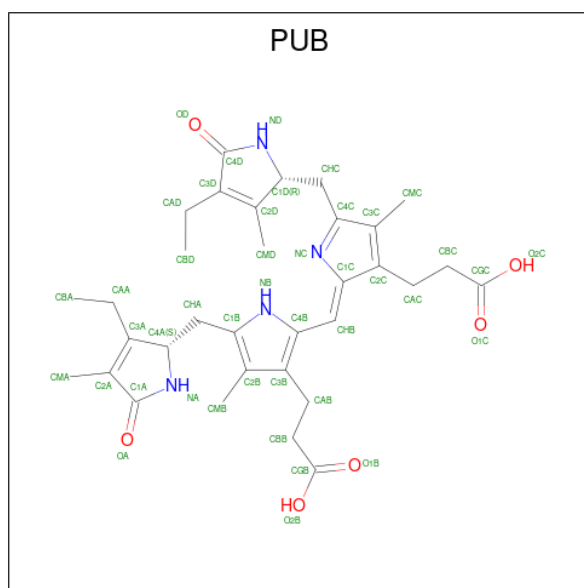
Chain	Residue	Modelled	Actual	Comment	Reference
L	10	VAL	-	expression tag	UNP Q1AH60
L	11	ASN	-	expression tag	UNP Q1AH60
L	14	SER	ALA	conflict	UNP Q1AH60
L	22	SER	GLY	conflict	UNP Q1AH60
L	25	GLN	GLY	conflict	UNP Q1AH60
L	29	THR	SER	conflict	UNP Q1AH60
L	33	ASP	GLU	conflict	UNP Q1AH60
L	68	ALA	SER	conflict	UNP Q1AH60
L	93	THR	VAL	conflict	UNP Q1AH60
L	99	ALA	SER	conflict	UNP Q1AH60
L	102	SER	ALA	conflict	UNP Q1AH60
L	127	SER	THR	conflict	UNP Q1AH60
L	136	SER	ALA	conflict	UNP Q1AH60
L	142	ILE	VAL	conflict	UNP Q1AH60
L	143	SER	THR	conflict	UNP Q1AH60
L	150	LYS	THR	conflict	UNP Q1AH60
L	151	MET	ILE	conflict	UNP Q1AH60
L	152	ALA	GLU	conflict	UNP Q1AH60
L	153	THR	ILE	conflict	UNP Q1AH60
L	154	THR	ALA	conflict	UNP Q1AH60
L	155	ASP	ALA	conflict	UNP Q1AH60
L	162	SER	ALA	conflict	UNP Q1AH60
L	171	LYS	ARG	conflict	UNP Q1AH60
L	176	ILE	VAL	conflict	UNP Q1AH60

- Molecule 3 is PHYCOCYANOBILIN (three-letter code: CYC) (formula:  $C_{33}H_{40}N_4O_6$ ).



Mol	Chain	Residues	Atoms				ZeroOcc	AltConf
3	B	1	Total	C	N	O	0	0
			43	33	4	6		
3	B	1	Total	C	N	O	0	0
			43	33	4	6		
3	C	1	Total	C	N	O	0	0
			43	33	4	6		
3	C	1	Total	C	N	O	0	0
			43	33	4	6		
3	K	1	Total	C	N	O	0	0
			43	33	4	6		
3	K	1	Total	C	N	O	0	0
			43	33	4	6		
3	L	1	Total	C	N	O	0	0
			43	33	4	6		
3	L	1	Total	C	N	O	0	0
			43	33	4	6		

- Molecule 4 is PHYCOUROBILIN (three-letter code: PUB) (formula:  $C_{33}H_{42}N_4O_6$ ).



Mol	Chain	Residues	Atoms				ZeroOcc	AltConf
4	C	1	Total	C	N	O	0	0
			43	33	4	6		
4	L	1	Total	C	N	O	0	0
			43	33	4	6		

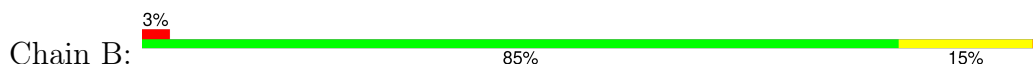
- Molecule 5 is water.

Mol	Chain	Residues	Atoms	ZeroOcc	AltConf
5	B	67	Total O 67 67	0	0
5	C	61	Total O 61 61	0	0
5	K	78	Total O 78 78	0	0
5	L	76	Total O 76 76	0	0

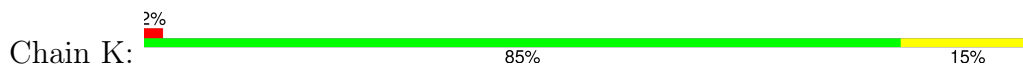
### 3 Residue-property plots [i](#)

These plots are drawn for all protein, RNA, DNA and oligosaccharide chains in the entry. The first graphic for a chain summarises the proportions of the various outlier classes displayed in the second graphic. The second graphic shows the sequence view annotated by issues in geometry and electron density. Residues are color-coded according to the number of geometric quality criteria for which they contain at least one outlier: green = 0, yellow = 1, orange = 2 and red = 3 or more. A red dot above a residue indicates a poor fit to the electron density ( $RSRZ > 2$ ). Stretches of 2 or more consecutive residues without any outlier are shown as a green connector. Residues present in the sample, but not in the model, are shown in grey.

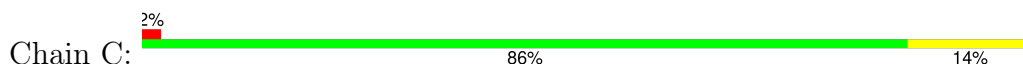
- Molecule 1: Bacterial fluorescent protein alpha



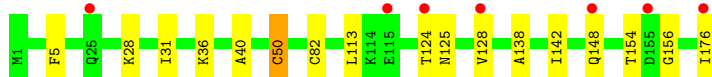
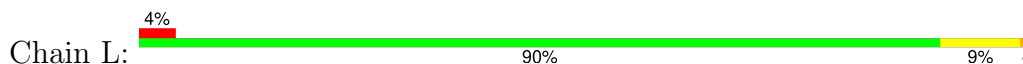
- Molecule 1: Bacterial fluorescent protein alpha



- Molecule 2: Bacterial fluorescent protein beta



- Molecule 2: Bacterial fluorescent protein beta





## 4 Data and refinement statistics i

Property	Value	Source
Space group	H 3	Depositor
Cell constants a, b, c, $\alpha$ , $\beta$ , $\gamma$	186.61Å 186.61Å 59.42Å 90.00° 90.00° 120.00°	Depositor
Resolution (Å)	42.59 – 2.07 42.59 – 2.07	Depositor EDS
% Data completeness (in resolution range)	99.7 (42.59-2.07) 99.8 (42.59-2.07)	Depositor EDS
$R_{merge}$	(Not available)	Depositor
$R_{sym}$	(Not available)	Depositor
$\langle I/\sigma(I) \rangle$ <sup>1</sup>	2.20 (at 2.06Å)	Xtrriage
Refinement program	PHENIX 1.17.1_3660	Depositor
R, $R_{free}$	0.199 , 0.251 0.200 , 0.250	Depositor DCC
$R_{free}$ test set	2411 reflections (5.13%)	wwPDB-VP
Wilson B-factor (Å <sup>2</sup> )	19.5	Xtrriage
Anisotropy	0.056	Xtrriage
Bulk solvent $k_{sol}$ (e/Å <sup>3</sup> ), $B_{sol}$ (Å <sup>2</sup> )	0.40 , 60.4	EDS
L-test for twinning <sup>2</sup>	$\langle  L  \rangle = 0.48$ , $\langle L^2 \rangle = 0.30$	Xtrriage
Estimated twinning fraction	0.029 for h,-h-k,-l	Xtrriage
$F_o, F_c$ correlation	0.93	EDS
Total number of atoms	5748	wwPDB-VP
Average B, all atoms (Å <sup>2</sup> )	23.0	wwPDB-VP

Xtrriage's analysis on translational NCS is as follows: *The largest off-origin peak in the Patterson function is 3.67% of the height of the origin peak. No significant pseudotranslation is detected.*

<sup>1</sup>Intensities estimated from amplitudes.

<sup>2</sup>Theoretical values of  $\langle |L| \rangle$ ,  $\langle L^2 \rangle$  for acentric reflections are 0.5, 0.333 respectively for untwinned datasets, and 0.375, 0.2 for perfectly twinned datasets.

## 5 Model quality [i](#)

### 5.1 Standard geometry [i](#)

Bond lengths and bond angles in the following residue types are not validated in this section: CYC, PUB

The Z score for a bond length (or angle) is the number of standard deviations the observed value is removed from the expected value. A bond length (or angle) with  $|Z| > 5$  is considered an outlier worth inspection. RMSZ is the root-mean-square of all Z scores of the bond lengths (or angles).

Mol	Chain	Bond lengths		Bond angles	
		RMSZ	# Z  >5	RMSZ	# Z  >5
1	B	0.43	0/1264	0.56	0/1711
1	K	0.42	0/1264	0.55	0/1711
2	C	0.37	0/1286	0.53	0/1740
2	L	0.39	0/1286	0.55	0/1740
All	All	0.40	0/5100	0.55	0/6902

There are no bond length outliers.

There are no bond angle outliers.

There are no chirality outliers.

There are no planarity outliers.

### 5.2 Too-close contacts [i](#)

In the following table, the Non-H and H(model) columns list the number of non-hydrogen atoms and hydrogen atoms in the chain respectively. The H(added) column lists the number of hydrogen atoms added and optimized by MolProbity. The Clashes column lists the number of clashes within the asymmetric unit, whereas Symm-Clashes lists symmetry-related clashes.

Mol	Chain	Non-H	H(model)	H(added)	Clashes	Symm-Clashes
1	B	1243	0	1213	24	0
1	K	1243	0	1212	25	0
2	C	1275	0	1282	19	0
2	L	1275	0	1282	15	1
3	B	86	0	76	6	0
3	C	86	0	76	12	0
3	K	86	0	75	8	1
3	L	86	0	75	11	0
4	C	43	0	39	4	0

*Continued on next page...*

Continued from previous page...

Mol	Chain	Non-H	H(model)	H(added)	Clashes	Symm-Clashes
4	L	43	0	40	3	0
5	B	67	0	0	5	0
5	C	61	0	0	2	0
5	K	78	0	0	6	0
5	L	76	0	0	1	0
All	All	5748	0	5370	92	1

The all-atom clashscore is defined as the number of clashes found per 1000 atoms (including hydrogen atoms). The all-atom clashscore for this structure is 8.

All (92) close contacts within the same asymmetric unit are listed below, sorted by their clash magnitude.

Atom-1	Atom-2	Interatomic distance (Å)	Clash overlap (Å)
1:B:32:GLN:HG3	1:K:32:GLN:HG3	1.37	1.04
1:K:139:CYS:SG	3:K:202:CYC:H2C	2.08	0.94
2:L:50:CYS:SG	4:L:201:PUB:HAA1	2.08	0.94
2:L:128:VAL:HG13	2:L:176:ILE:HD11	1.54	0.88
2:C:128:VAL:HG13	2:C:176:ILE:HD11	1.57	0.87
1:B:145:SER:O	5:B:301:HOH:O	1.98	0.81
1:B:135:ARG:NH2	5:B:302:HOH:O	2.16	0.78
1:K:121:ASN:ND2	5:K:301:HOH:O	2.20	0.75
3:K:202:CYC:HHA	3:K:202:CYC:HBD1	1.70	0.74
3:L:202:CYC:HMD2	3:L:202:CYC:HC	1.52	0.74
1:K:90:MET:SD	5:K:354:HOH:O	2.46	0.72
3:C:202:CYC:HC	3:C:202:CYC:HMD2	1.53	0.72
2:C:158:CYS:SG	3:C:203:CYC:HAC1	2.31	0.71
1:B:82:CYS:SG	3:B:201:CYC:HAC2	2.31	0.71
1:K:114:ARG:HB3	1:K:118:ARG:NH1	2.10	0.67
1:B:127:TYR:CZ	3:B:201:CYC:HAC1	2.30	0.67
2:C:77:ARG:NH1	3:C:202:CYC:O1D	2.25	0.65
2:L:113:LEU:HD13	3:L:202:CYC:HMB3	1.79	0.64
2:C:40:ALA:HB1	2:C:142:ILE:HD12	1.82	0.62
1:K:155:ALA:O	1:K:159:VAL:HG23	2.00	0.62
1:B:8:THR:HG21	1:B:23:ASP:HA	1.84	0.59
1:B:81:LYS:NZ	3:B:201:CYC:O2A	2.35	0.58
2:L:148:GLN:HB2	4:L:201:PUB:HMA2	1.86	0.57
1:B:32:GLN:HG3	1:K:32:GLN:CG	2.24	0.57
2:C:36:LYS:HD3	3:C:203:CYC:HMD3	1.85	0.57
1:K:24:LEU:HB3	3:L:203:CYC:HAB1	1.88	0.56
1:K:139:CYS:SG	3:K:202:CYC:C2C	2.92	0.54
2:L:40:ALA:HB1	2:L:142:ILE:HD12	1.90	0.53

Continued on next page...

*Continued from previous page...*

Atom-1	Atom-2	Interatomic distance (Å)	Clash overlap (Å)
1:B:114:ARG:HH12	1:B:163:LEU:C	2.12	0.53
1:K:30:ASN:ND2	5:K:306:HOH:O	2.41	0.53
4:C:201:PUB:HMD1	4:C:201:PUB:HBD2	1.91	0.52
1:B:121:ASN:ND2	5:B:309:HOH:O	2.42	0.52
1:K:114:ARG:HB3	1:K:118:ARG:HH12	1.73	0.52
3:L:203:CYC:HMD2	3:L:203:CYC:NC	2.24	0.51
1:B:32:GLN:CG	1:K:32:GLN:HG3	2.26	0.51
1:K:138:LEU:HD22	1:K:152:TYR:HD2	1.75	0.51
2:L:138:ALA:O	2:L:142:ILE:HG12	2.10	0.51
2:C:158:CYS:SG	3:C:203:CYC:CAC	2.99	0.51
1:K:38:LEU:O	1:K:42:GLU:HG2	2.11	0.50
2:C:136:SER:OG	4:C:201:PUB:HBC2	2.11	0.50
1:K:37:ARG:NH1	1:K:98:VAL:O	2.44	0.50
1:B:126:SER:OG	3:B:201:CYC:HMC1	2.13	0.49
3:C:203:CYC:O2D	5:C:302:HOH:O	2.19	0.49
1:B:114:ARG:HB3	1:B:118:ARG:NH1	2.26	0.49
1:K:81:LYS:NZ	3:K:201:CYC:O2A	2.43	0.49
3:K:202:CYC:HBD1	3:K:202:CYC:CHA	2.42	0.49
4:L:201:PUB:HBD2	4:L:201:PUB:HMD1	1.95	0.48
1:B:63:TYR:OH	1:B:125:SER:OG	2.31	0.48
1:B:24:LEU:HB3	3:C:203:CYC:HAB1	1.96	0.48
5:K:305:HOH:O	2:L:28:LYS:NZ	2.46	0.48
2:C:82:CYS:SG	3:C:202:CYC:H2C	2.54	0.47
2:C:113:LEU:HD13	3:C:202:CYC:HMB3	1.97	0.46
3:L:203:CYC:HBC3	3:L:203:CYC:HHD	1.98	0.46
2:L:82:CYS:SG	3:L:202:CYC:HAC2	2.56	0.46
1:K:71:GLU:HA	5:K:301:HOH:O	2.16	0.45
2:C:5:PHE:HZ	2:C:31:ILE:HD11	1.82	0.45
2:L:36:LYS:HG2	3:L:203:CYC:C1D	2.46	0.45
2:L:125:ASN:OD1	2:L:125:ASN:N	2.50	0.45
1:B:114:ARG:NH1	1:B:163:LEU:C	2.70	0.45
2:C:84:ARG:NH2	3:C:202:CYC:O1A	2.49	0.45
1:K:24:LEU:HB3	3:L:203:CYC:CAB	2.47	0.45
1:B:82:CYS:SG	3:B:201:CYC:CAC	3.04	0.44
1:B:155:ALA:O	1:B:159:VAL:HG23	2.18	0.44
3:C:203:CYC:HMD2	3:C:203:CYC:NC	2.32	0.44
1:K:114:ARG:HG2	1:K:114:ARG:HH21	1.82	0.44
2:C:148:GLN:HB2	4:C:201:PUB:HMA2	1.99	0.44
2:C:88:ILE:HG21	3:C:202:CYC:CAB	2.48	0.43
1:K:39:GLU:O	1:K:43:LYS:HD3	2.18	0.43
2:C:138:ALA:O	2:C:142:ILE:HG12	2.18	0.43

*Continued on next page...*

Continued from previous page...

Atom-1	Atom-2	Interatomic distance (Å)	Clash overlap (Å)
1:K:82:CYS:HA	3:K:201:CYC:HHD	1.99	0.43
2:C:164:GLU:HG2	2:C:168:TYR:CE2	2.53	0.43
1:K:139:CYS:SG	3:K:202:CYC:HBC2	2.59	0.43
1:B:59:CYS:SG	1:B:126:SER:HB2	2.59	0.43
2:C:124:THR:HG23	5:C:307:HOH:O	2.17	0.43
2:L:124:THR:O	2:L:128:VAL:HG22	2.18	0.43
2:C:125:ASN:OD1	2:C:125:ASN:N	2.52	0.43
1:K:120:LEU:HD21	3:K:201:CYC:HAA2	2.01	0.42
1:B:140:VAL:HG22	5:B:301:HOH:O	2.18	0.42
2:L:5:PHE:HZ	2:L:31:ILE:HD11	1.84	0.42
1:B:144:MET:HG3	5:B:301:HOH:O	2.20	0.42
1:B:139:CYS:SG	3:B:202:CYC:HBC2	2.59	0.42
1:K:8:THR:HG21	1:K:26:SER:CB	2.49	0.42
2:C:139:VAL:HG13	2:C:162:SER:HB2	2.02	0.41
2:L:36:LYS:HD3	3:L:203:CYC:HMD3	2.01	0.41
1:B:72:ALA:O	1:B:78:LYS:HB3	2.21	0.41
2:L:124:THR:HG23	5:L:311:HOH:O	2.20	0.41
2:L:82:CYS:SG	3:L:202:CYC:H2C	2.61	0.41
1:B:43:LYS:HZ3	1:B:144:MET:HA	1.86	0.41
2:C:124:THR:HB	2:C:176:ILE:HD12	2.04	0.40
1:K:114:ARG:HG3	5:K:319:HOH:O	2.21	0.40
4:C:201:PUB:HMA1	4:C:201:PUB:HBA3	2.03	0.40
3:L:202:CYC:HAB2	3:L:202:CYC:HMB1	1.97	0.40

All (1) symmetry-related close contacts are listed below. The label for Atom-2 includes the symmetry operator and encoded unit-cell translations to be applied.

Atom-1	Atom-2	Interatomic distance (Å)	Clash overlap (Å)
2:L:156:GLY:O	3:K:202:CYC:CMC[9_674]	1.38	0.82

## 5.3 Torsion angles [i](#)

### 5.3.1 Protein backbone [i](#)

In the following table, the Percentiles column shows the percent Ramachandran outliers of the chain as a percentile score with respect to all X-ray entries followed by that with respect to entries of similar resolution.

The Analysed column shows the number of residues for which the backbone conformation was analysed, and the total number of residues.

Mol	Chain	Analysed	Favoured	Allowed	Outliers	Percentiles	
1	B	162/164 (99%)	159 (98%)	3 (2%)	0	100	100
1	K	162/164 (99%)	160 (99%)	2 (1%)	0	100	100
2	C	174/176 (99%)	172 (99%)	2 (1%)	0	100	100
2	L	174/176 (99%)	172 (99%)	2 (1%)	0	100	100
All	All	672/680 (99%)	663 (99%)	9 (1%)	0	100	100

There are no Ramachandran outliers to report.

### 5.3.2 Protein sidechains [i](#)

In the following table, the Percentiles column shows the percent sidechain outliers of the chain as a percentile score with respect to all X-ray entries followed by that with respect to entries of similar resolution.

The Analysed column shows the number of residues for which the sidechain conformation was analysed, and the total number of residues.

Mol	Chain	Analysed	Rotameric	Outliers	Percentiles	
1	B	129/130 (99%)	128 (99%)	1 (1%)	79	80
1	K	129/130 (99%)	129 (100%)	0	100	100
2	C	139/139 (100%)	137 (99%)	2 (1%)	62	62
2	L	139/139 (100%)	137 (99%)	2 (1%)	62	62
All	All	536/538 (100%)	531 (99%)	5 (1%)	75	76

All (5) residues with a non-rotameric sidechain are listed below:

Mol	Chain	Res	Type
1	B	8	THR
2	C	50	CYS
2	C	161	LEU
2	L	50	CYS
2	L	154	THR

Sometimes sidechains can be flipped to improve hydrogen bonding and reduce clashes. There are no such sidechains identified.

### 5.3.3 RNA [i](#)

There are no RNA molecules in this entry.

## 5.4 Non-standard residues in protein, DNA, RNA chains [i](#)

There are no non-standard protein/DNA/RNA residues in this entry.

## 5.5 Carbohydrates [i](#)

There are no oligosaccharides in this entry.

## 5.6 Ligand geometry [i](#)

10 ligands are modelled in this entry.

In the following table, the Counts columns list the number of bonds (or angles) for which Mogul statistics could be retrieved, the number of bonds (or angles) that are observed in the model and the number of bonds (or angles) that are defined in the Chemical Component Dictionary. The Link column lists molecule types, if any, to which the group is linked. The Z score for a bond length (or angle) is the number of standard deviations the observed value is removed from the expected value. A bond length (or angle) with  $|Z| > 2$  is considered an outlier worth inspection. RMSZ is the root-mean-square of all Z scores of the bond lengths (or angles).

Mol	Type	Chain	Res	Link	Bond lengths			Bond angles		
					Counts	RMSZ	# Z  > 2	Counts	RMSZ	# Z  > 2
3	CYC	B	201	-	42,46,46	3.36	20 (47%)	52,67,67	1.84	14 (26%)
3	CYC	L	203	2	42,46,46	3.30	17 (40%)	52,67,67	1.59	12 (23%)
4	PUB	C	201	2	42,46,46	3.90	15 (35%)	38,67,67	2.27	9 (23%)
4	PUB	L	201	-	42,46,46	3.95	16 (38%)	38,67,67	2.26	10 (26%)
3	CYC	K	201	1	42,46,46	3.36	20 (47%)	52,67,67	1.89	17 (32%)
3	CYC	C	203	-	42,46,46	3.32	20 (47%)	52,67,67	2.05	18 (34%)
3	CYC	B	202	-	42,46,46	3.48	19 (45%)	52,67,67	1.67	11 (21%)
3	CYC	L	202	-	42,46,46	3.34	20 (47%)	52,67,67	1.84	16 (30%)
3	CYC	K	202	-	42,46,46	3.41	17 (40%)	52,67,67	1.83	15 (28%)
3	CYC	C	202	-	42,46,46	3.46	19 (45%)	52,67,67	1.77	15 (28%)

In the following table, the Chirals column lists the number of chiral outliers, the number of chiral centers analysed, the number of these observed in the model and the number defined in the Chemical Component Dictionary. Similar counts are reported in the Torsion and Rings columns. '-' means no outliers of that kind were identified.

Mol	Type	Chain	Res	Link	Chirals	Torsions	Rings
3	CYC	B	201	-	-	14/25/74/74	0/4/4/4
3	CYC	L	203	2	-	10/25/74/74	0/4/4/4

*Continued on next page...*

Continued from previous page...

Mol	Type	Chain	Res	Link	Chirals	Torsions	Rings
4	PUB	C	201	2	-	8/24/74/74	0/4/4/4
4	PUB	L	201	-	-	8/24/74/74	0/4/4/4
3	CYC	K	201	1	-	13/25/74/74	0/4/4/4
3	CYC	C	203	-	-	10/25/74/74	0/4/4/4
3	CYC	B	202	-	-	12/25/74/74	0/4/4/4
3	CYC	L	202	-	-	11/25/74/74	0/4/4/4
3	CYC	K	202	-	-	14/25/74/74	0/4/4/4
3	CYC	C	202	-	-	9/25/74/74	0/4/4/4

All (183) bond length outliers are listed below:

Mol	Chain	Res	Type	Atoms	Z	Observed(Å)	Ideal(Å)
4	C	201	PUB	C1A-NA	13.53	1.51	1.35
4	L	201	PUB	C1A-NA	13.37	1.51	1.35
4	L	201	PUB	C4D-ND	13.00	1.51	1.35
4	C	201	PUB	C4D-ND	12.74	1.50	1.35
3	B	202	CYC	C1B-NB	9.61	1.54	1.37
3	K	202	CYC	C1B-NB	9.36	1.53	1.37
3	B	201	CYC	C1B-NB	9.32	1.53	1.37
3	C	202	CYC	C1B-NB	9.29	1.53	1.37
3	L	202	CYC	C1B-NB	9.19	1.53	1.37
3	B	202	CYC	C1C-NC	8.97	1.49	1.37
3	C	202	CYC	C1C-NC	8.93	1.49	1.37
3	K	202	CYC	C1C-NC	8.84	1.49	1.37
3	C	203	CYC	C1C-NC	8.80	1.49	1.37
3	L	203	CYC	C1B-NB	8.77	1.52	1.37
3	K	201	CYC	C1B-NB	8.58	1.52	1.37
3	B	201	CYC	C1C-NC	8.46	1.48	1.37
3	C	203	CYC	C1B-NB	8.40	1.52	1.37
3	L	203	CYC	C1C-NC	8.24	1.48	1.37
3	K	201	CYC	C1C-NC	8.14	1.48	1.37
3	L	202	CYC	C1C-NC	7.82	1.48	1.37
3	C	202	CYC	C4C-NC	7.59	1.52	1.37
3	L	203	CYC	C4C-NC	7.51	1.51	1.37
3	B	202	CYC	C4C-NC	7.36	1.51	1.37
3	L	202	CYC	C4C-NC	7.31	1.51	1.37
3	C	203	CYC	C4C-NC	7.30	1.51	1.37
4	L	201	PUB	C4C-NC	7.15	1.47	1.35
3	K	202	CYC	C4C-NC	7.11	1.51	1.37
3	B	201	CYC	C4C-NC	7.06	1.51	1.37

Continued on next page...



*Continued from previous page...*

Mol	Chain	Res	Type	Atoms	Z	Observed(Å)	Ideal(Å)
3	K	201	CYC	C4C-NC	6.98	1.50	1.37
4	C	201	PUB	C4C-NC	6.96	1.47	1.35
3	C	202	CYC	C4B-NB	6.71	1.53	1.38
3	B	202	CYC	C4B-NB	6.70	1.53	1.38
3	L	202	CYC	C4B-NB	6.63	1.53	1.38
3	K	202	CYC	C4B-NB	6.50	1.53	1.38
4	L	201	PUB	C1D-ND	6.36	1.54	1.45
3	B	201	CYC	C4B-NB	6.23	1.52	1.38
4	C	201	PUB	C1D-ND	6.04	1.54	1.45
3	K	201	CYC	C4B-NB	6.04	1.52	1.38
3	L	202	CYC	CHA-C1A	-5.99	1.29	1.35
3	L	203	CYC	C4B-NB	5.97	1.51	1.38
3	C	203	CYC	C4B-NB	5.89	1.51	1.38
4	L	201	PUB	C1C-NC	5.83	1.51	1.38
3	B	202	CYC	C1A-NA	5.82	1.51	1.38
4	C	201	PUB	C4A-NA	5.74	1.53	1.45
4	C	201	PUB	C1C-NC	5.72	1.50	1.38
4	L	201	PUB	C4A-NA	5.71	1.53	1.45
3	B	201	CYC	CHB-C4A	5.65	1.53	1.40
4	L	201	PUB	C3A-C2A	5.54	1.42	1.33
3	C	202	CYC	C1A-NA	5.41	1.50	1.38
4	C	201	PUB	C3A-C2A	5.40	1.42	1.33
3	C	202	CYC	CHB-C4A	5.33	1.52	1.40
3	K	202	CYC	C1A-NA	5.31	1.50	1.38
3	C	203	CYC	CHB-C4A	5.23	1.52	1.40
3	L	202	CYC	C1A-NA	5.22	1.49	1.38
3	K	201	CYC	CHA-C1A	-5.18	1.30	1.35
3	K	201	CYC	CHB-C4A	5.16	1.52	1.40
3	L	202	CYC	CHB-C4A	5.16	1.52	1.40
3	K	201	CYC	C2C-C1C	-5.14	1.47	1.52
3	B	202	CYC	CHB-C4A	5.08	1.52	1.40
3	L	203	CYC	C2A-C3A	5.01	1.47	1.36
3	C	203	CYC	C1A-NA	4.99	1.49	1.38
3	K	202	CYC	C1A-C2A	4.97	1.53	1.45
3	B	201	CYC	C1A-NA	4.91	1.49	1.38
3	C	203	CYC	C2A-C3A	4.90	1.47	1.36
3	B	202	CYC	C4A-NA	4.87	1.47	1.36
3	B	202	CYC	C2A-C3A	4.87	1.47	1.36
3	L	203	CYC	CHA-C1A	-4.85	1.30	1.35
3	C	202	CYC	CHA-C1A	-4.83	1.30	1.35
3	L	203	CYC	C1A-NA	4.79	1.48	1.38
3	K	201	CYC	C2A-C3A	4.78	1.47	1.36

*Continued on next page...*

*Continued from previous page...*

Mol	Chain	Res	Type	Atoms	Z	Observed(Å)	Ideal(Å)
3	B	201	CYC	C2A-C3A	4.77	1.47	1.36
3	L	203	CYC	CHB-C4A	4.76	1.51	1.40
3	K	201	CYC	C1A-NA	4.72	1.48	1.38
3	C	202	CYC	C2A-C3A	4.69	1.46	1.36
3	K	202	CYC	C2A-C3A	4.65	1.46	1.36
3	L	202	CYC	C2A-C3A	4.63	1.46	1.36
3	B	202	CYC	CHA-C1A	-4.62	1.30	1.35
3	C	202	CYC	C4A-NA	4.61	1.47	1.36
3	K	202	CYC	CHA-C1A	-4.58	1.30	1.35
3	K	202	CYC	C4A-NA	4.55	1.47	1.36
3	C	203	CYC	C4A-NA	4.50	1.46	1.36
4	L	201	PUB	C2C-C3C	4.50	1.46	1.36
3	C	203	CYC	C2C-C1C	-4.49	1.48	1.52
3	K	202	CYC	CHB-C4A	4.43	1.50	1.40
3	B	201	CYC	C4A-NA	4.42	1.46	1.36
3	C	202	CYC	C1A-C2A	4.39	1.52	1.45
3	B	202	CYC	C1A-C2A	4.39	1.52	1.45
3	L	203	CYC	C2C-C1C	-4.33	1.48	1.52
3	L	202	CYC	C4A-NA	4.31	1.46	1.36
4	C	201	PUB	C2C-C3C	4.30	1.46	1.36
3	B	201	CYC	CHA-C1A	-4.27	1.31	1.35
3	C	203	CYC	C1A-C2A	4.20	1.52	1.45
3	K	201	CYC	C1A-C2A	4.18	1.52	1.45
3	L	203	CYC	C4A-NA	4.15	1.46	1.36
3	B	201	CYC	C2C-C1C	-4.13	1.48	1.52
3	C	203	CYC	CHA-C1A	-4.12	1.31	1.35
3	K	201	CYC	C4A-NA	4.06	1.45	1.36
3	L	203	CYC	C1A-C2A	3.96	1.51	1.45
4	C	201	PUB	C1C-C2C	3.95	1.51	1.45
3	C	202	CYC	C2C-C1C	-3.89	1.48	1.52
3	K	202	CYC	C2C-C1C	-3.87	1.48	1.52
3	L	202	CYC	C1A-C2A	3.85	1.51	1.45
3	B	201	CYC	C1A-C2A	3.82	1.51	1.45
4	L	201	PUB	C1C-C2C	3.82	1.51	1.45
3	B	202	CYC	C2C-C1C	-3.81	1.48	1.52
4	L	201	PUB	CHB-C1C	-3.56	1.31	1.35
3	C	202	CYC	C1D-CHD	3.41	1.55	1.41
3	K	201	CYC	C1D-CHD	3.36	1.55	1.41
3	L	203	CYC	C1D-CHD	3.22	1.54	1.41
3	L	202	CYC	C2C-C1C	-3.19	1.49	1.52
3	K	202	CYC	C1D-CHD	3.16	1.54	1.41
3	B	202	CYC	C1D-CHD	3.14	1.54	1.41

*Continued on next page...*

*Continued from previous page...*

Mol	Chain	Res	Type	Atoms	Z	Observed(Å)	Ideal(Å)
3	L	202	CYC	C1D-CHD	3.12	1.54	1.41
3	K	201	CYC	CHB-C1B	-3.11	1.30	1.37
4	C	201	PUB	CHC-C1D	-3.09	1.47	1.53
3	L	203	CYC	CHB-C1B	-3.07	1.30	1.37
3	B	201	CYC	C1D-CHD	3.04	1.53	1.41
3	C	203	CYC	C4D-CHA	3.01	1.53	1.41
4	C	201	PUB	CHB-C1C	-2.95	1.32	1.35
3	C	203	CYC	CHB-C1B	-2.95	1.30	1.37
3	K	202	CYC	C4D-CHA	2.94	1.53	1.41
3	K	202	CYC	OC-C1C	-2.93	1.17	1.23
3	K	201	CYC	OC-C1C	-2.93	1.17	1.23
4	C	201	PUB	CHA-C4A	-2.92	1.47	1.54
3	C	203	CYC	C1D-CHD	2.88	1.53	1.41
3	K	201	CYC	C3B-C2B	2.85	1.42	1.36
3	K	202	CYC	C3B-C2B	2.83	1.42	1.36
3	B	201	CYC	C4D-CHA	2.82	1.52	1.41
4	L	201	PUB	CHC-C1D	-2.81	1.47	1.53
3	K	202	CYC	CHB-C1B	-2.81	1.31	1.37
3	B	202	CYC	CHB-C1B	-2.80	1.31	1.37
3	L	203	CYC	C4D-CHA	2.78	1.52	1.41
4	L	201	PUB	C4B-CHB	2.77	1.52	1.41
3	B	202	CYC	C4D-CHA	2.77	1.52	1.41
4	C	201	PUB	OA-C1A	-2.75	1.18	1.23
3	L	202	CYC	CHB-C1B	-2.75	1.31	1.37
3	B	202	CYC	C3B-C2B	2.74	1.42	1.36
3	L	203	CYC	C3B-C2B	2.73	1.42	1.36
3	B	201	CYC	CHB-C1B	-2.72	1.31	1.37
3	L	203	CYC	OB-C4B	-2.71	1.18	1.23
3	C	202	CYC	OC-C1C	-2.70	1.18	1.23
3	K	201	CYC	C4D-CHA	2.66	1.52	1.41
3	K	201	CYC	OB-C4B	-2.65	1.18	1.23
4	C	201	PUB	C4B-CHB	2.64	1.52	1.41
4	L	201	PUB	OA-C1A	-2.64	1.18	1.23
3	C	202	CYC	C4D-CHA	2.60	1.52	1.41
3	C	202	CYC	C3B-C2B	2.60	1.42	1.36
3	B	201	CYC	C3B-C2B	2.60	1.42	1.36
3	C	202	CYC	OB-C4B	-2.50	1.18	1.23
4	C	201	PUB	OD-C4D	-2.49	1.18	1.23
3	L	202	CYC	OB-C4B	-2.48	1.18	1.23
3	B	201	CYC	OC-C1C	-2.47	1.18	1.23
3	K	202	CYC	OB-C4B	-2.46	1.18	1.23
3	C	202	CYC	CHB-C1B	-2.45	1.32	1.37

*Continued on next page...*

*Continued from previous page...*

Mol	Chain	Res	Type	Atoms	Z	Observed(Å)	Ideal(Å)
3	L	202	CYC	CHD-C4C	-2.45	1.31	1.37
3	C	203	CYC	C3B-C2B	2.44	1.42	1.36
3	L	202	CYC	C4D-CHA	2.43	1.51	1.41
3	B	201	CYC	CHD-C4C	-2.43	1.32	1.37
3	L	203	CYC	OC-C1C	-2.38	1.18	1.23
4	L	201	PUB	OD-C4D	-2.37	1.19	1.23
3	B	202	CYC	OB-C4B	-2.36	1.19	1.23
3	L	202	CYC	OC-C1C	-2.34	1.18	1.23
4	L	201	PUB	C3C-C4C	2.32	1.50	1.43
3	C	203	CYC	OB-C4B	-2.32	1.19	1.23
3	C	203	CYC	C4A-C3A	2.29	1.50	1.45
3	B	201	CYC	OB-C4B	-2.26	1.19	1.23
3	C	202	CYC	C1B-C2B	2.24	1.49	1.45
3	B	202	CYC	OC-C1C	-2.24	1.19	1.23
3	L	202	CYC	C1B-C2B	2.23	1.49	1.45
3	C	203	CYC	C1B-C2B	2.19	1.49	1.45
3	C	203	CYC	CHD-C4C	-2.15	1.32	1.37
3	B	202	CYC	CHD-C4C	-2.14	1.32	1.37
3	K	201	CYC	C4A-C3A	2.13	1.50	1.45
3	K	201	CYC	C1B-C2B	2.10	1.48	1.45
3	C	203	CYC	OC-C1C	-2.10	1.19	1.23
3	B	202	CYC	C1B-C2B	2.08	1.48	1.45
3	C	202	CYC	C4A-C3A	2.06	1.50	1.45
3	K	201	CYC	CHD-C4C	-2.04	1.32	1.37
3	B	201	CYC	C4A-C3A	2.03	1.50	1.45
3	L	202	CYC	C3B-C2B	2.03	1.41	1.36
4	L	201	PUB	CMD-C2D	2.03	1.53	1.50
3	L	202	CYC	C4A-C3A	2.01	1.50	1.45
3	B	201	CYC	C1B-C2B	2.00	1.48	1.45

All (137) bond angle outliers are listed below:

Mol	Chain	Res	Type	Atoms	Z	Observed(°)	Ideal(°)
4	L	201	PUB	CHC-C1D-ND	-7.04	105.09	113.73
4	C	201	PUB	CHC-C1D-ND	-6.34	105.95	113.73
4	L	201	PUB	CHA-C4A-NA	-6.09	107.28	113.84
3	B	202	CYC	C1D-CHD-C4C	-5.30	121.19	128.47
4	C	201	PUB	CBB-CAB-C3B	5.10	121.12	112.54
3	B	201	CYC	C2C-C3C-C4C	5.02	108.86	101.34
3	K	202	CYC	C1C-NC-C4C	-4.87	107.30	113.41
3	C	203	CYC	C3C-C4C-NC	-4.77	101.80	107.94
3	K	202	CYC	C1B-CHB-C4A	-4.74	116.41	128.06

*Continued on next page...*

*Continued from previous page...*

Mol	Chain	Res	Type	Atoms	Z	Observed(°)	Ideal(°)
3	K	201	CYC	C2C-C3C-C4C	4.71	108.40	101.34
4	C	201	PUB	CHA-C4A-NA	-4.69	108.78	113.84
3	B	201	CYC	C1B-CHB-C4A	-4.68	116.57	128.06
3	K	201	CYC	C1B-CHB-C4A	-4.62	116.71	128.06
3	B	202	CYC	C1C-NC-C4C	-4.60	107.64	113.41
4	C	201	PUB	C4B-CHB-C1C	-4.38	122.87	128.73
4	L	201	PUB	C4B-CHB-C1C	-4.38	122.87	128.73
3	C	203	CYC	CAC-C3C-C4C	4.32	123.77	112.67
3	C	202	CYC	C3C-C4C-NC	-4.29	102.42	107.94
3	L	202	CYC	C1C-NC-C4C	-4.07	108.30	113.41
4	C	201	PUB	C4A-NA-C1A	-4.05	107.19	113.42
4	L	201	PUB	C4A-NA-C1A	-4.04	107.21	113.42
4	C	201	PUB	C1D-ND-C4D	-3.90	107.43	113.42
3	C	202	CYC	C1C-NC-C4C	-3.79	108.65	113.41
3	L	203	CYC	C1C-NC-C4C	-3.74	108.71	113.41
3	K	202	CYC	C1D-CHD-C4C	-3.67	123.42	128.47
3	C	203	CYC	C1C-NC-C4C	-3.64	108.84	113.41
3	C	203	CYC	CMA-C3A-C4A	3.62	130.72	125.10
3	L	203	CYC	C2C-C3C-C4C	3.56	106.67	101.34
3	L	202	CYC	OC-C1C-C2C	3.53	128.98	126.17
4	L	201	PUB	C1D-ND-C4D	-3.51	108.02	113.42
3	C	203	CYC	C3B-C4B-NB	-3.47	104.00	106.77
3	C	203	CYC	C1D-CHD-C4C	-3.44	123.75	128.47
3	B	201	CYC	C4D-CHA-C1A	-3.42	124.16	128.73
3	L	203	CYC	C1B-CHB-C4A	-3.39	119.73	128.06
4	C	201	PUB	C2C-C1C-NC	-3.34	105.32	110.04
3	C	202	CYC	C2C-C3C-C4C	3.34	106.34	101.34
3	K	201	CYC	CHB-C4A-NA	-3.30	117.84	124.95
3	K	202	CYC	C3C-C4C-NC	-3.28	103.72	107.94
3	K	202	CYC	C1B-NB-C4B	-3.27	106.64	110.66
3	L	203	CYC	CHB-C4A-NA	-3.27	117.90	124.95
3	C	203	CYC	CHB-C4A-NA	-3.21	118.02	124.95
3	L	202	CYC	C1B-CHB-C4A	-3.20	120.19	128.06
3	K	201	CYC	CMA-C3A-C4A	3.20	130.07	125.10
3	L	202	CYC	C1B-NB-C4B	-3.19	106.75	110.66
3	B	202	CYC	C1B-NB-C4B	-3.18	106.75	110.66
3	L	202	CYC	C4D-CHA-C1A	-3.17	124.49	128.73
3	B	202	CYC	C2C-C3C-C4C	3.13	106.02	101.34
3	B	201	CYC	C1C-NC-C4C	-3.12	109.49	113.41
4	C	201	PUB	C1C-C2C-C3C	3.11	110.09	106.73
3	K	202	CYC	C4D-CHA-C1A	-3.11	124.57	128.73
3	C	203	CYC	CHB-C4A-C3A	3.08	132.78	124.87

*Continued on next page...*

*Continued from previous page...*

Mol	Chain	Res	Type	Atoms	Z	Observed(°)	Ideal(°)
3	L	202	CYC	CAB-C3B-C4B	3.07	126.12	121.37
3	B	202	CYC	C1B-CHB-C4A	-3.06	120.53	128.06
3	L	202	CYC	CMA-C3A-C4A	3.01	129.77	125.10
3	K	201	CYC	C1C-NC-C4C	-2.97	109.69	113.41
3	K	201	CYC	C4D-CHA-C1A	-2.94	124.79	128.73
3	K	201	CYC	CAD-CBD-CGD	-2.92	105.96	113.83
3	C	202	CYC	C4D-CHA-C1A	-2.91	124.83	128.73
3	B	201	CYC	C2A-C1A-NA	-2.91	105.92	110.04
3	L	203	CYC	CHB-C4A-C3A	2.90	132.33	124.87
4	L	201	PUB	C2C-C1C-NC	-2.90	105.94	110.04
3	K	201	CYC	C1B-NB-C4B	-2.90	107.10	110.66
3	C	203	CYC	CBC-CAC-C3C	2.90	119.56	113.41
4	L	201	PUB	C1C-C2C-C3C	2.85	109.81	106.73
3	K	201	CYC	CMC-C2C-C1C	-2.85	106.27	112.40
3	L	203	CYC	CMA-C3A-C4A	2.84	129.51	125.10
3	L	203	CYC	C1D-CHD-C4C	-2.82	124.59	128.47
3	K	201	CYC	CHB-C4A-C3A	2.81	132.09	124.87
3	L	202	CYC	C2C-C3C-C4C	2.79	105.52	101.34
3	C	202	CYC	CHD-C4C-NC	2.78	129.11	125.63
3	K	202	CYC	CAC-C3C-C4C	-2.78	105.54	112.67
3	K	201	CYC	C3C-C4C-NC	-2.77	104.38	107.94
3	B	201	CYC	C1B-NB-C4B	-2.73	107.31	110.66
3	L	202	CYC	C3C-C4C-NC	-2.72	104.44	107.94
3	C	202	CYC	C1B-NB-C4B	-2.71	107.34	110.66
3	C	202	CYC	CAD-CBD-CGD	-2.69	106.58	113.83
3	C	202	CYC	CMA-C3A-C4A	2.69	129.27	125.10
3	B	202	CYC	C3C-C4C-NC	-2.66	104.52	107.94
3	C	202	CYC	C1B-C2B-C3B	2.65	110.59	107.86
3	C	203	CYC	C2A-C1A-NA	-2.62	106.33	110.04
3	K	202	CYC	CBA-CAA-C2A	-2.61	105.31	112.53
3	C	203	CYC	O2D-CGD-CBD	2.61	122.25	114.00
3	L	202	CYC	CHB-C4A-NA	-2.58	119.37	124.95
3	K	202	CYC	CMC-C2C-C3C	2.57	123.94	113.98
4	L	201	PUB	C1D-CHC-C4C	-2.57	107.72	113.74
3	C	203	CYC	C1B-CHB-C4A	-2.56	121.77	128.06
3	B	202	CYC	CMC-C2C-C1C	-2.55	106.90	112.40
3	C	203	CYC	OB-C4B-C3B	2.55	130.71	128.03
3	C	202	CYC	C1B-CHB-C4A	-2.54	121.81	128.06
3	B	201	CYC	CMA-C3A-C4A	2.54	129.04	125.10
3	B	201	CYC	CMC-C2C-C1C	-2.53	106.95	112.40
3	B	202	CYC	C4D-CHA-C1A	-2.53	125.34	128.73
3	L	203	CYC	CMC-C2C-C1C	-2.52	106.97	112.40

*Continued on next page...*

*Continued from previous page...*

Mol	Chain	Res	Type	Atoms	Z	Observed(°)	Ideal(°)
3	B	201	CYC	CAB-C3B-C4B	2.51	125.25	121.37
3	B	201	CYC	CBD-CAD-C3D	-2.50	108.33	112.54
3	L	203	CYC	C3B-C4B-NB	-2.48	104.78	106.77
3	L	203	CYC	C2A-C1A-NA	-2.47	106.54	110.04
3	L	202	CYC	C1B-C2B-C3B	2.46	110.39	107.86
4	L	201	PUB	CBC-CAC-C2C	-2.45	105.76	112.53
3	L	202	CYC	CAB-C3B-C2B	-2.45	123.06	127.56
3	C	202	CYC	C2A-C1A-NA	-2.44	106.59	110.04
3	C	203	CYC	C2C-C1C-NC	-2.44	106.26	108.29
3	B	201	CYC	C1A-C2A-C3A	2.43	109.36	106.73
3	B	202	CYC	CAA-CBA-CGA	-2.42	107.26	113.67
3	C	203	CYC	CAD-CBD-CGD	-2.41	107.33	113.83
3	K	201	CYC	C2A-C1A-NA	-2.40	106.65	110.04
3	L	202	CYC	O2A-CGA-CBA	2.39	121.56	114.00
3	K	201	CYC	CHA-C1A-NA	-2.38	125.53	128.76
3	K	202	CYC	C2A-C1A-NA	-2.33	106.75	110.04
3	L	202	CYC	CHD-C4C-NC	2.32	128.53	125.63
3	B	201	CYC	C1B-C2B-C3B	2.32	110.24	107.86
3	L	203	CYC	C1B-NB-C4B	-2.31	107.82	110.66
3	C	202	CYC	CAB-C3B-C4B	2.31	124.94	121.37
3	B	201	CYC	O2A-CGA-CBA	2.31	121.29	114.00
3	L	202	CYC	CHB-C4A-C3A	2.30	130.78	124.87
3	K	202	CYC	CBC-CAC-C3C	2.30	118.29	113.41
3	K	201	CYC	O2D-CGD-CBD	2.26	121.14	114.00
3	C	202	CYC	CBC-CAC-C3C	-2.25	108.65	113.41
3	C	203	CYC	CAB-C3B-C2B	-2.22	123.47	127.56
3	C	203	CYC	C1A-C2A-C3A	2.22	109.13	106.73
3	B	202	CYC	C2A-C1A-NA	-2.21	106.92	110.04
3	C	202	CYC	O2A-CGA-CBA	2.19	120.92	114.00
3	K	202	CYC	O2D-CGD-CBD	2.18	120.88	114.00
3	L	203	CYC	C3C-C4C-NC	-2.16	105.16	107.94
3	C	202	CYC	O2D-CGD-CBD	2.16	120.83	114.00
3	K	202	CYC	C1B-C2B-C3B	2.14	110.06	107.86
3	L	202	CYC	CAD-CBD-CGD	-2.13	108.08	113.83
3	K	202	CYC	CMB-C2B-C1B	-2.13	121.57	124.16
3	B	202	CYC	C1B-C2B-C3B	2.10	110.03	107.86
3	K	201	CYC	C1A-C2A-C3A	2.10	109.00	106.73
3	C	203	CYC	O2A-CGA-CBA	2.10	120.64	114.00
4	L	201	PUB	CBD-CAD-C3D	2.10	118.10	112.42
3	K	201	CYC	O2A-CGA-CBA	2.08	120.57	114.00
4	C	201	PUB	CAC-CBC-CGC	-2.05	108.22	113.67
3	B	201	CYC	CHB-C4A-C3A	2.02	130.07	124.87

*Continued on next page...*

*Continued from previous page...*

Mol	Chain	Res	Type	Atoms	Z	Observed(°)	Ideal(°)
3	K	202	CYC	O2A-CGA-CBA	2.02	120.38	114.00
3	K	201	CYC	CAB-C3B-C4B	2.01	124.47	121.37

There are no chirality outliers.

All (109) torsion outliers are listed below:

Mol	Chain	Res	Type	Atoms
3	B	201	CYC	NA-C1A-CHA-C4D
3	B	201	CYC	NA-C4A-CHB-C1B
3	B	201	CYC	C3A-C4A-CHB-C1B
3	B	201	CYC	C2C-C3C-CAC-CBC
3	B	201	CYC	NC-C4C-CHD-C1D
3	B	201	CYC	ND-C1D-CHD-C4C
3	B	201	CYC	C2D-C1D-CHD-C4C
3	B	202	CYC	ND-C4D-CHA-C1A
3	B	202	CYC	NA-C4A-CHB-C1B
3	B	202	CYC	C3A-C4A-CHB-C1B
3	B	202	CYC	C2C-C3C-CAC-CBC
3	B	202	CYC	C4C-C3C-CAC-CBC
3	C	202	CYC	NA-C4A-CHB-C1B
3	C	202	CYC	C3A-C4A-CHB-C1B
3	C	202	CYC	C2C-C3C-CAC-CBC
3	C	202	CYC	C4C-C3C-CAC-CBC
3	C	202	CYC	ND-C1D-CHD-C4C
3	C	202	CYC	C2D-C1D-CHD-C4C
3	C	203	CYC	NA-C4A-CHB-C1B
3	C	203	CYC	C3A-C4A-CHB-C1B
3	C	203	CYC	C4C-C3C-CAC-CBC
3	K	201	CYC	NA-C4A-CHB-C1B
3	K	201	CYC	C3A-C4A-CHB-C1B
3	K	201	CYC	NC-C4C-CHD-C1D
3	K	201	CYC	ND-C1D-CHD-C4C
3	K	201	CYC	C2D-C1D-CHD-C4C
3	K	202	CYC	ND-C4D-CHA-C1A
3	K	202	CYC	C3D-C4D-CHA-C1A
3	K	202	CYC	NA-C4A-CHB-C1B
3	K	202	CYC	C3A-C4A-CHB-C1B
3	K	202	CYC	C2C-C3C-CAC-CBC
3	K	202	CYC	C4C-C3C-CAC-CBC
3	K	202	CYC	C2D-C3D-CAD-CBD
3	K	202	CYC	C4D-C3D-CAD-CBD
3	L	202	CYC	NA-C4A-CHB-C1B

*Continued on next page...*



*Continued from previous page...*

Mol	Chain	Res	Type	Atoms
3	L	202	CYC	C3A-C4A-CHB-C1B
3	L	202	CYC	C2C-C3C-CAC-CBC
3	L	202	CYC	C4C-C3C-CAC-CBC
3	L	202	CYC	ND-C1D-CHD-C4C
3	L	202	CYC	C2D-C1D-CHD-C4C
3	L	203	CYC	NA-C4A-CHB-C1B
3	L	203	CYC	C3A-C4A-CHB-C1B
3	L	203	CYC	C2A-CAA-CBA-CGA
3	L	203	CYC	C2C-C3C-CAC-CBC
3	L	203	CYC	C4C-C3C-CAC-CBC
4	C	201	PUB	C4D-C3D-CAD-CBD
4	C	201	PUB	C3B-CAB-CBB-CGB
4	L	201	PUB	C4D-C3D-CAD-CBD
3	B	201	CYC	C2B-C3B-CAB-CBB
3	K	201	CYC	C2B-C3B-CAB-CBB
4	C	201	PUB	C2D-C3D-CAD-CBD
4	L	201	PUB	C2D-C3D-CAD-CBD
3	B	202	CYC	NA-C1A-CHA-C4D
3	K	201	CYC	NA-C1A-CHA-C4D
3	K	202	CYC	NA-C1A-CHA-C4D
3	B	201	CYC	C4B-C3B-CAB-CBB
3	K	201	CYC	C4B-C3B-CAB-CBB
4	L	201	PUB	C4A-C3A-CAA-CBA
4	C	201	PUB	C4A-C3A-CAA-CBA
4	L	201	PUB	C3B-CAB-CBB-CGB
3	B	201	CYC	C2A-C1A-CHA-C4D
3	K	201	CYC	C2A-C1A-CHA-C4D
3	K	202	CYC	C2A-C1A-CHA-C4D
3	C	203	CYC	C2B-C3B-CAB-CBB
3	B	202	CYC	NC-C4C-CHD-C1D
3	B	202	CYC	C2A-C1A-CHA-C4D
3	L	203	CYC	C2B-C3B-CAB-CBB
3	K	201	CYC	CAA-CBA-CGA-O2A
3	C	203	CYC	CAA-CBA-CGA-O2A
3	L	202	CYC	CAD-CBD-CGD-O1D
3	L	202	CYC	CAD-CBD-CGD-O2D
4	L	201	PUB	CAC-CBC-CGC-O1C
4	L	201	PUB	CAB-CBB-CGB-O1B
3	B	201	CYC	CAA-CBA-CGA-O2A
3	K	202	CYC	CAA-CBA-CGA-O1A
3	L	203	CYC	CAA-CBA-CGA-O2A
3	B	201	CYC	CAA-CBA-CGA-O1A

*Continued on next page...*

*Continued from previous page...*

Mol	Chain	Res	Type	Atoms
3	B	202	CYC	CAA-CBA-CGA-O1A
3	C	202	CYC	CAA-CBA-CGA-O2A
3	K	201	CYC	CAA-CBA-CGA-O1A
3	L	202	CYC	CAA-CBA-CGA-O2A
4	C	201	PUB	CAC-CBC-CGC-O1C
4	L	201	PUB	CAB-CBB-CGB-O2B
3	C	203	CYC	C2C-C3C-CAC-CBC
3	C	202	CYC	CAA-CBA-CGA-O1A
3	L	202	CYC	CAA-CBA-CGA-O1A
3	L	203	CYC	CAA-CBA-CGA-O1A
4	C	201	PUB	CAC-CBC-CGC-O2C
3	C	203	CYC	CAA-CBA-CGA-O1A
3	C	203	CYC	C2A-CAA-CBA-CGA
4	L	201	PUB	CAC-CBC-CGC-O2C
3	C	203	CYC	CAD-CBD-CGD-O2D
3	K	202	CYC	CAD-CBD-CGD-O2D
3	B	202	CYC	CAD-CBD-CGD-O2D
3	K	202	CYC	CAA-CBA-CGA-O2A
3	L	203	CYC	CAD-CBD-CGD-O2D
4	C	201	PUB	CAB-CBB-CGB-O2B
3	B	202	CYC	CAA-CBA-CGA-O2A
3	B	201	CYC	CAD-CBD-CGD-O2D
3	K	201	CYC	CAD-CBD-CGD-O2D
3	B	202	CYC	CAD-CBD-CGD-O1D
4	C	201	PUB	CAB-CBB-CGB-O1B
3	L	203	CYC	CAD-CBD-CGD-O1D
3	C	203	CYC	CAD-CBD-CGD-O1D
3	B	201	CYC	CAD-CBD-CGD-O1D
3	K	201	CYC	CAD-CBD-CGD-O1D
3	K	202	CYC	CAD-CBD-CGD-O1D
3	L	202	CYC	C2B-C3B-CAB-CBB
3	C	202	CYC	C2B-C3B-CAB-CBB

There are no ring outliers.

10 monomers are involved in 45 short contacts:

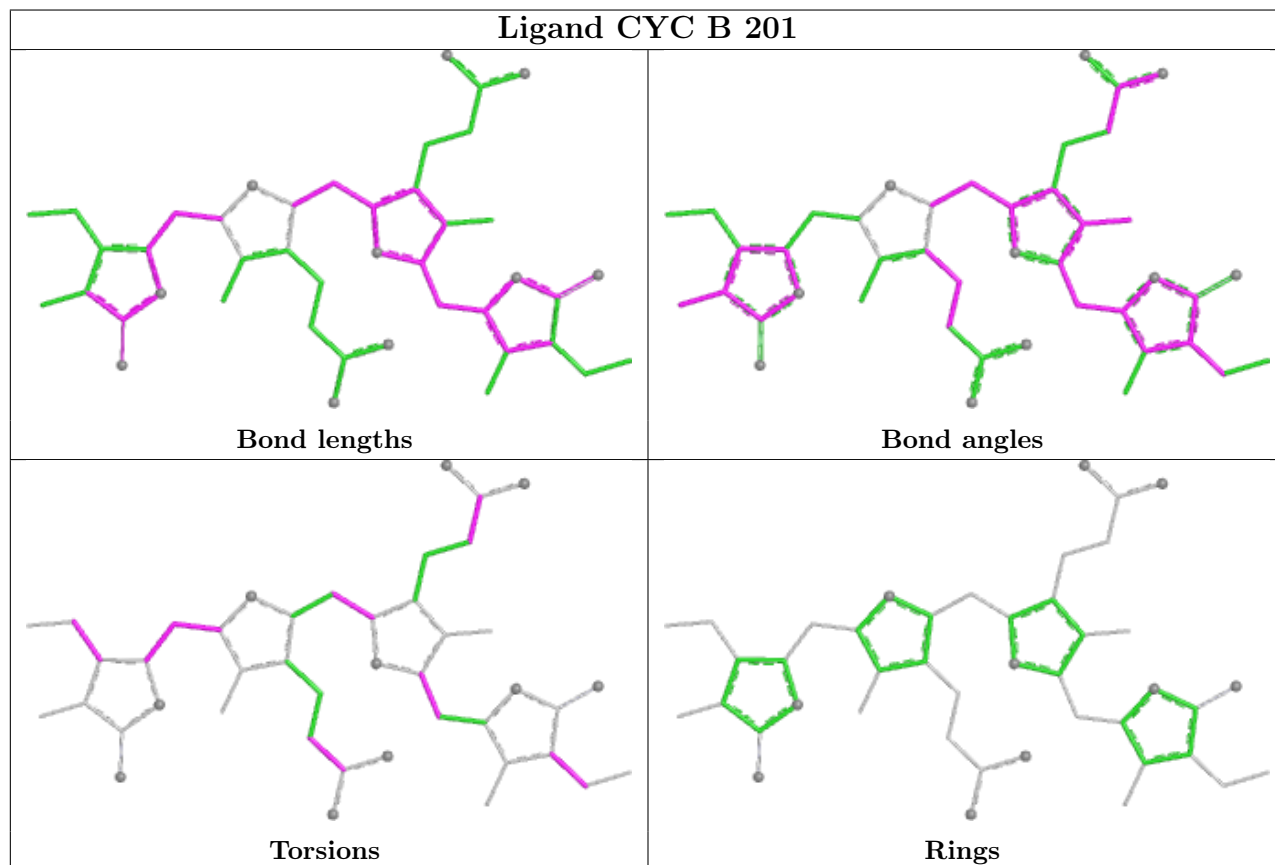
Mol	Chain	Res	Type	Clashes	Symm-Clashes
3	B	201	CYC	5	0
3	L	203	CYC	6	0
4	C	201	PUB	4	0
4	L	201	PUB	3	0
3	K	201	CYC	3	0

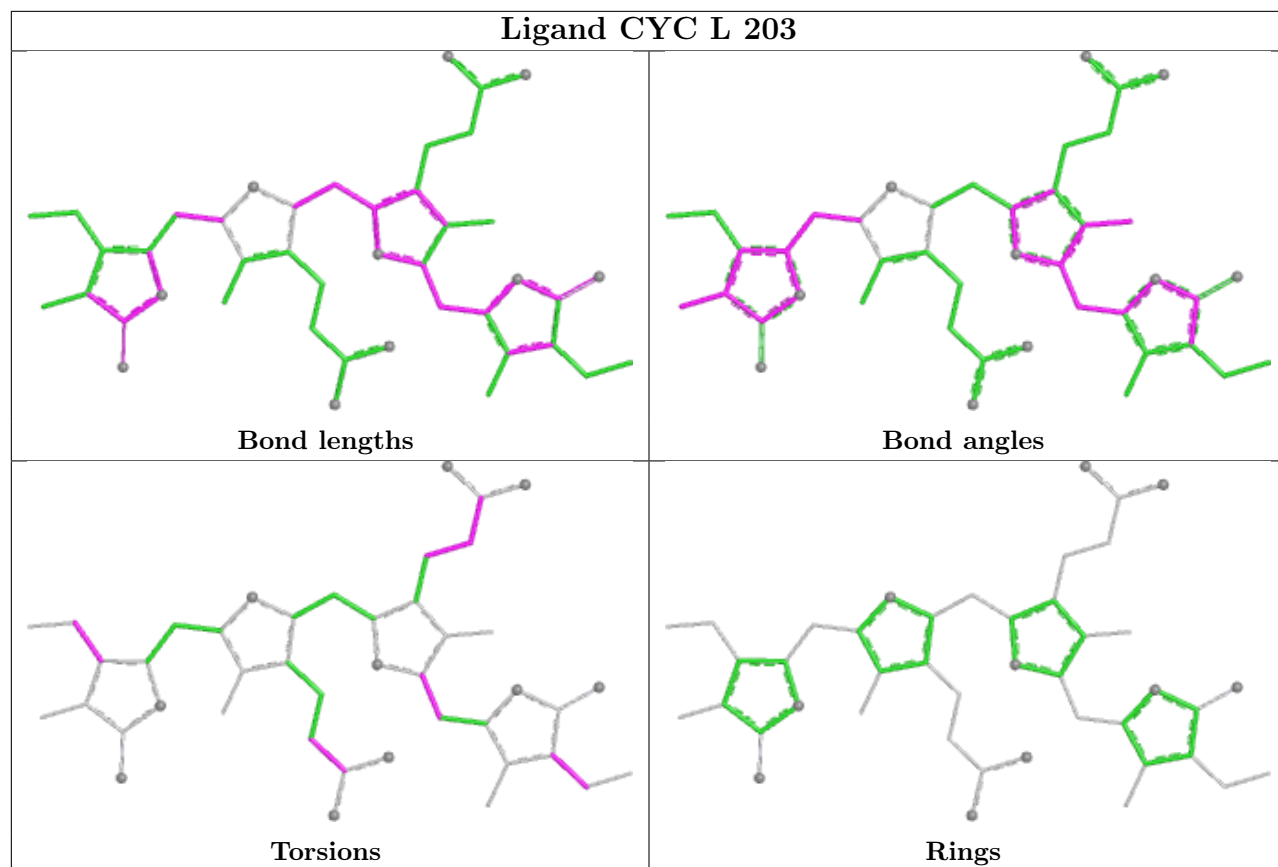
*Continued on next page...*

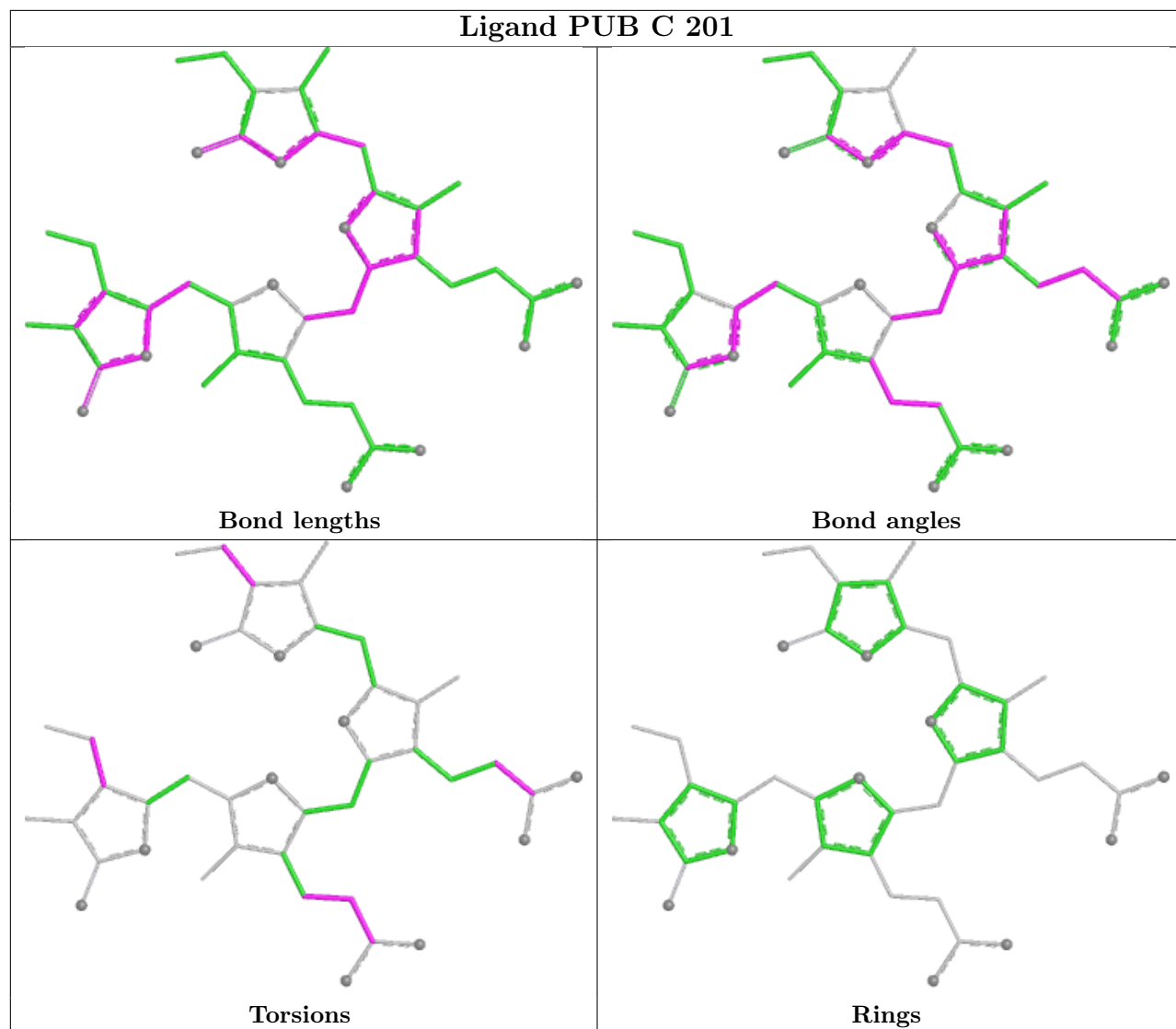
Continued from previous page...

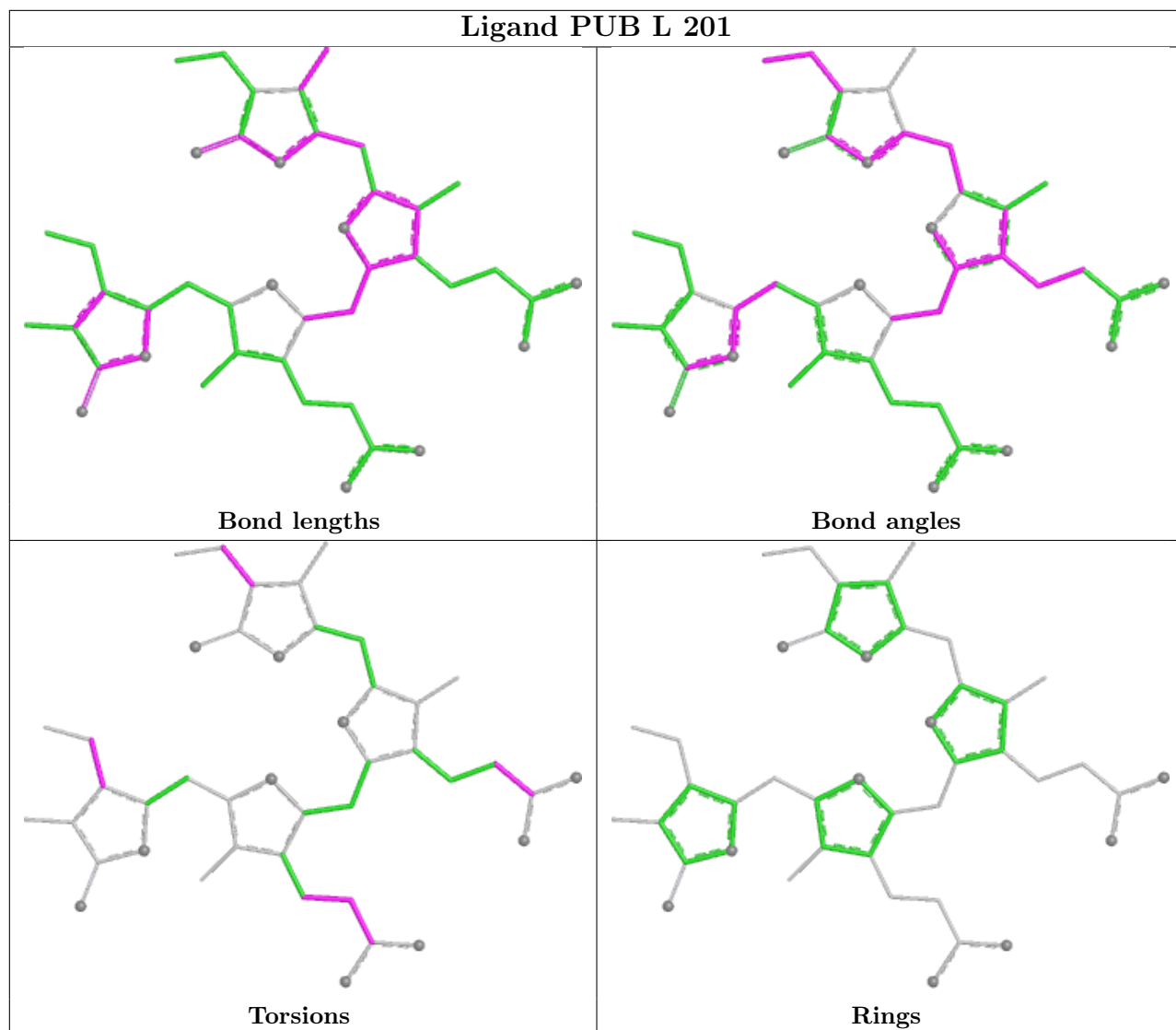
Mol	Chain	Res	Type	Clashes	Symm-Clashes
3	C	203	CYC	6	0
3	B	202	CYC	1	0
3	L	202	CYC	5	0
3	K	202	CYC	5	1
3	C	202	CYC	6	0

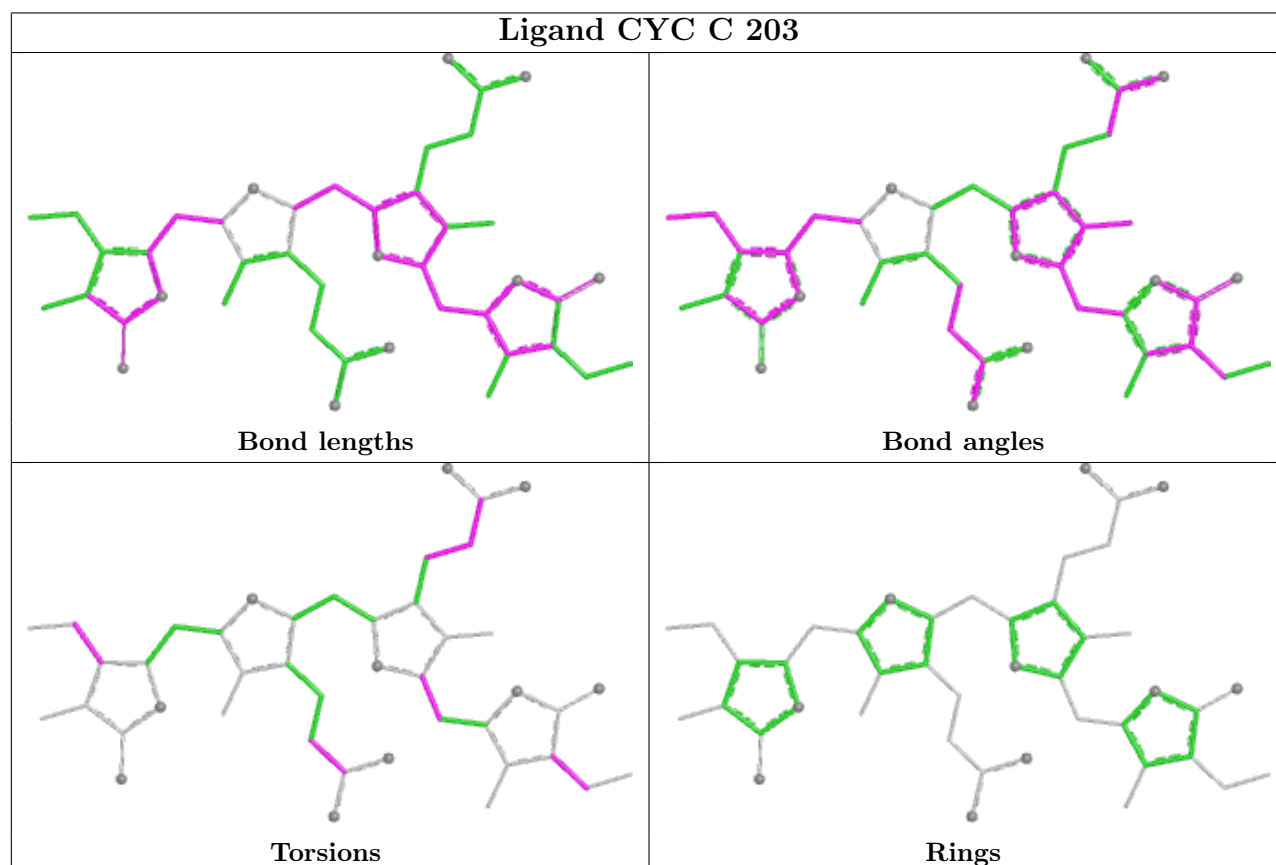
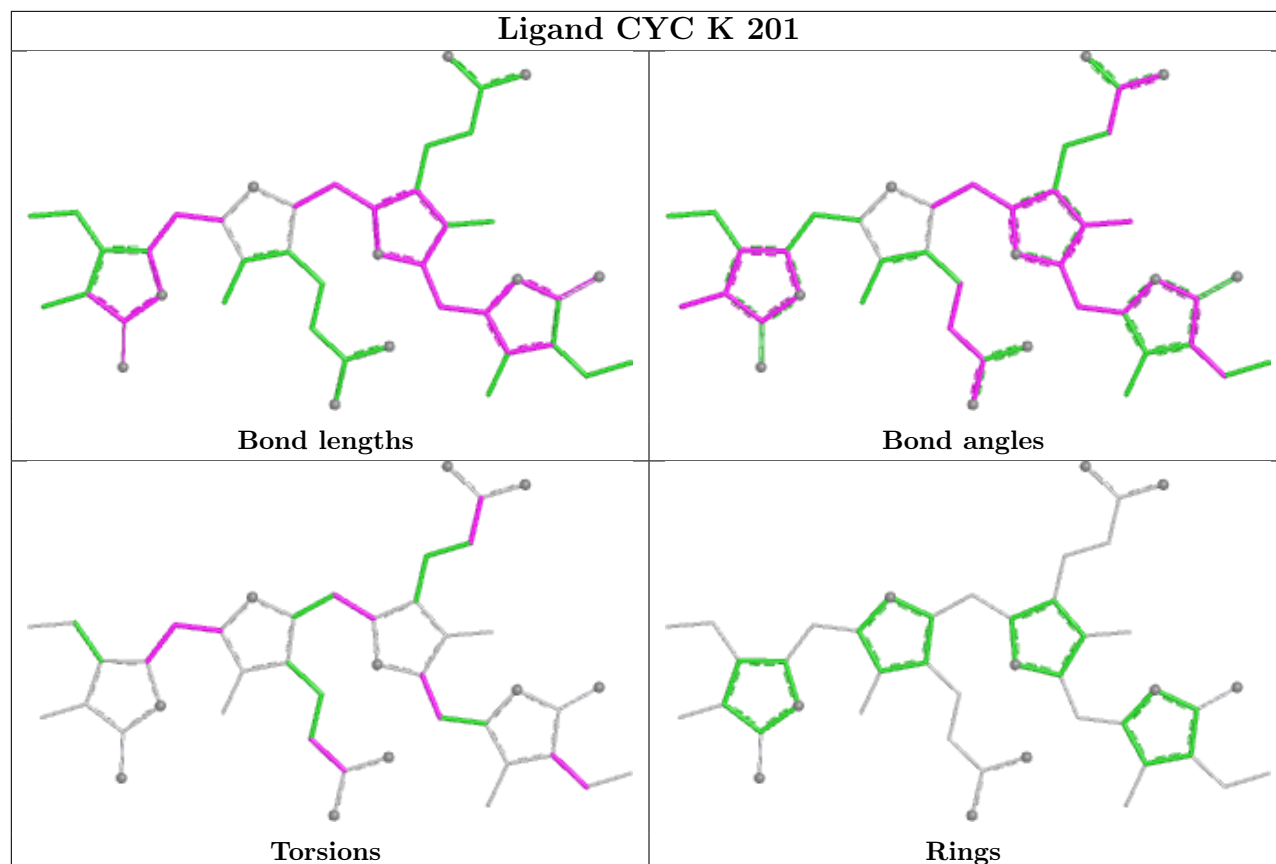
The following is a two-dimensional graphical depiction of Mogul quality analysis of bond lengths, bond angles, torsion angles, and ring geometry for all instances of the Ligand of Interest. In addition, ligands with molecular weight > 250 and outliers as shown on the validation Tables will also be included. For torsion angles, if less than 5% of the Mogul distribution of torsion angles is within 10 degrees of the torsion angle in question, then that torsion angle is considered an outlier. Any bond that is central to one or more torsion angles identified as an outlier by Mogul will be highlighted in the graph. For rings, the root-mean-square deviation (RMSD) between the ring in question and similar rings identified by Mogul is calculated over all ring torsion angles. If the average RMSD is greater than 60 degrees and the minimal RMSD between the ring in question and any Mogul-identified rings is also greater than 60 degrees, then that ring is considered an outlier. The outliers are highlighted in purple. The color gray indicates Mogul did not find sufficient equivalents in the CSD to analyse the geometry.

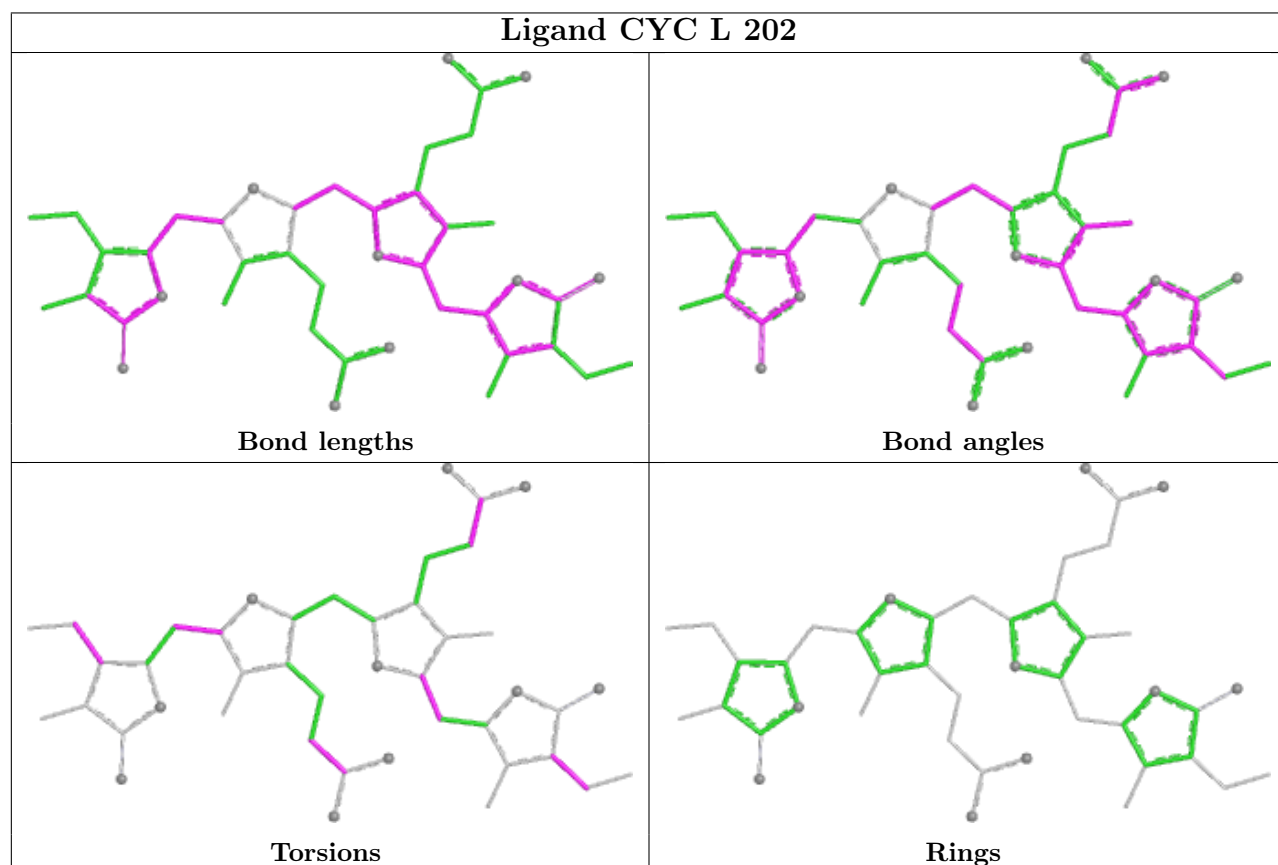
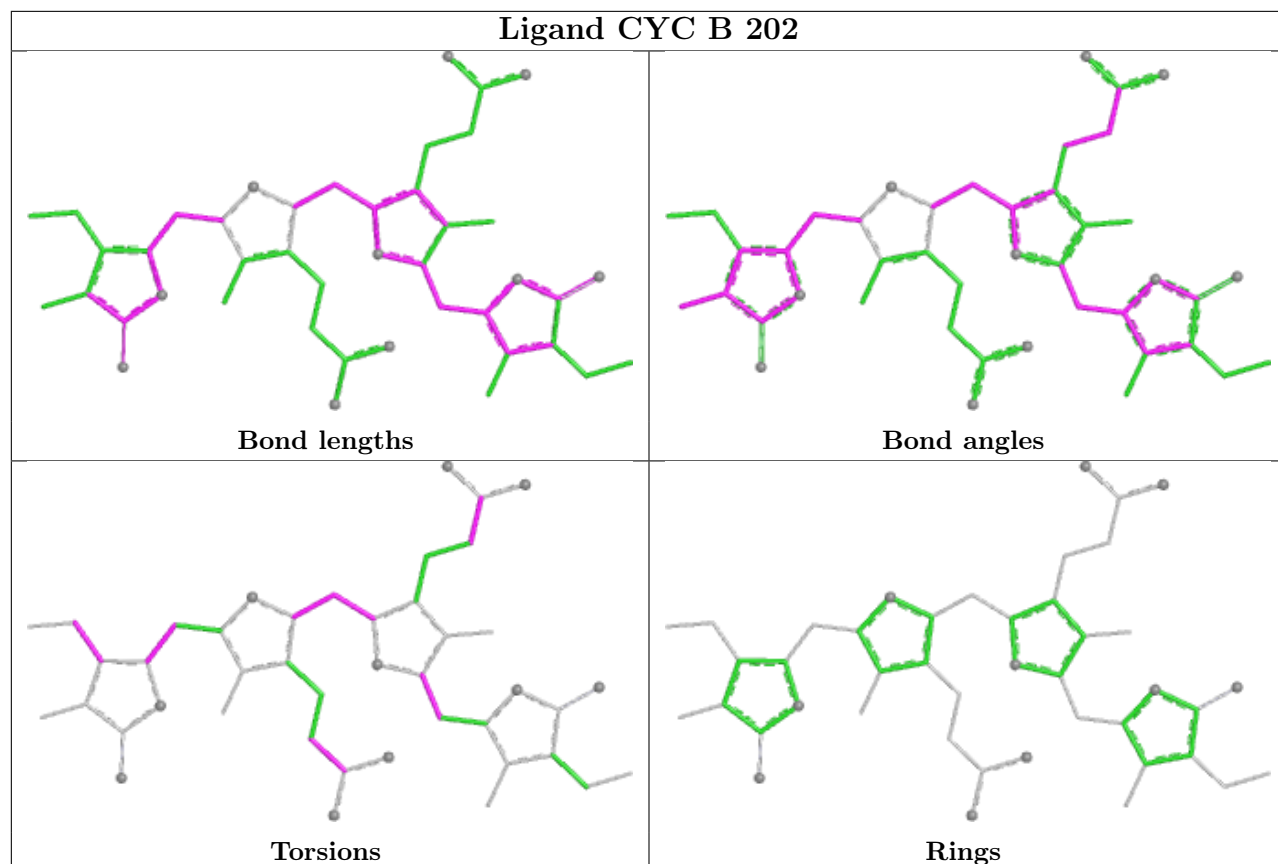




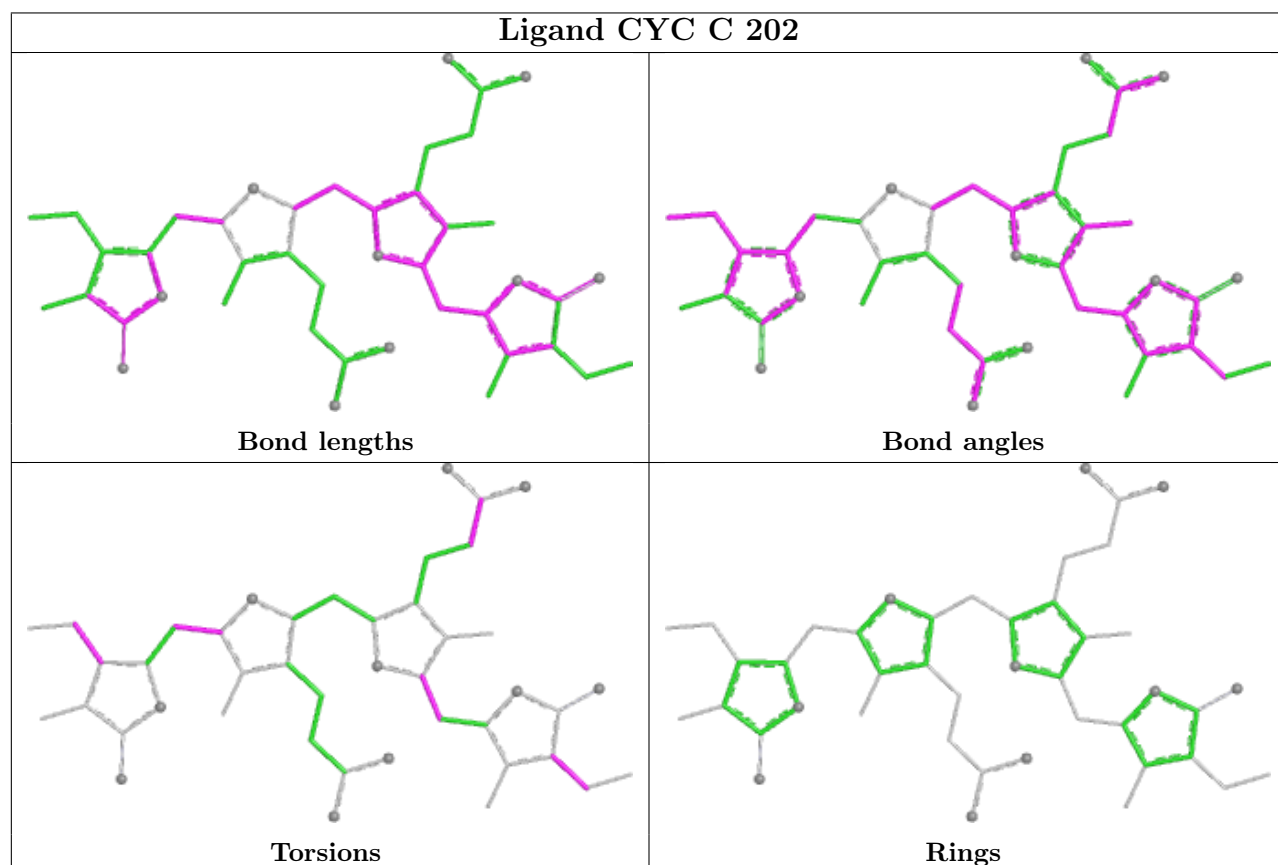
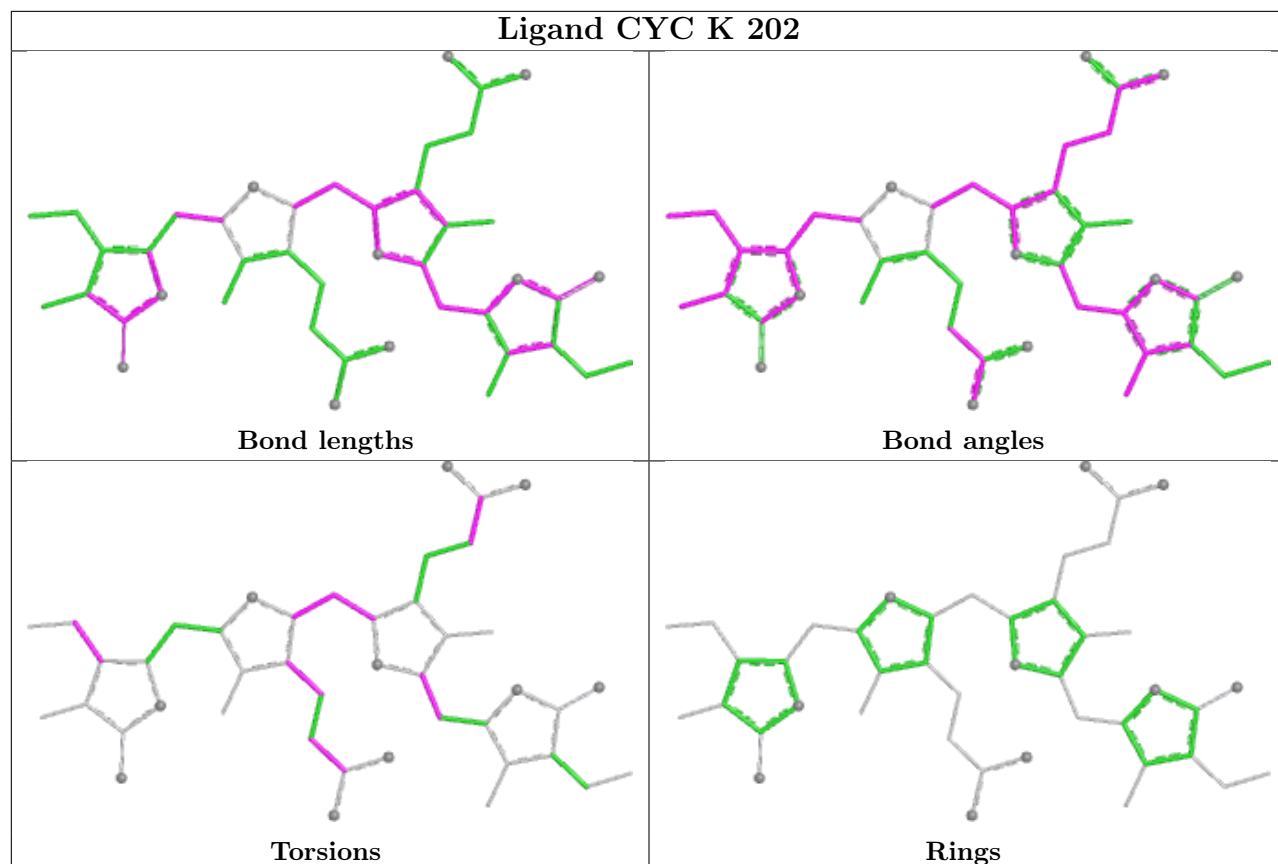












## 5.7 Other polymers [i](#)

There are no such residues in this entry.

## 5.8 Polymer linkage issues [i](#)

There are no chain breaks in this entry.

## 6 Fit of model and data [i](#)

### 6.1 Protein, DNA and RNA chains [i](#)

In the following table, the column labelled ‘#RSRZ > 2’ contains the number (and percentage) of RSRZ outliers, followed by percent RSRZ outliers for the chain as percentile scores relative to all X-ray entries and entries of similar resolution. The OWAB column contains the minimum, median, 95<sup>th</sup> percentile and maximum values of the occupancy-weighted average B-factor per residue. The column labelled ‘Q < 0.9’ lists the number of (and percentage) of residues with an average occupancy less than 0.9.

Mol	Chain	Analysed	<RSRZ>	#RSRZ>2	OWAB(Å <sup>2</sup> )	Q<0.9
1	B	164/164 (100%)	-0.08	5 (3%) 52 54	11, 21, 35, 54	0
1	K	164/164 (100%)	-0.05	3 (1%) 67 69	11, 21, 37, 52	0
2	C	176/176 (100%)	0.02	4 (2%) 61 62	12, 21, 36, 48	1 (0%)
2	L	176/176 (100%)	0.04	7 (3%) 43 44	11, 20, 37, 50	1 (0%)
All	All	680/680 (100%)	-0.02	19 (2%) 55 56	11, 21, 37, 54	2 (0%)

All (19) RSRZ outliers are listed below:

Mol	Chain	Res	Type	RSRZ
2	L	176	ILE	3.5
1	B	124	SER	3.2
1	K	124	SER	2.9
2	L	128	VAL	2.9
1	K	118	ARG	2.9
1	B	164	CYS	2.7
1	K	164	CYS	2.7
1	B	35	ALA	2.7
2	L	155	ASP	2.5
2	L	25	GLN	2.5
2	C	148	GLN	2.4
2	C	160	ALA	2.3
2	C	154	THR	2.3
2	L	124	THR	2.3
1	B	45	ALA	2.2
2	L	148	GLN	2.2
2	L	115	GLU	2.2
1	B	119	THR	2.1
2	C	155	ASP	2.0

## 6.2 Non-standard residues in protein, DNA, RNA chains [i](#)

There are no non-standard protein/DNA/RNA residues in this entry.

## 6.3 Carbohydrates [i](#)

There are no monosaccharides in this entry.

## 6.4 Ligands [i](#)

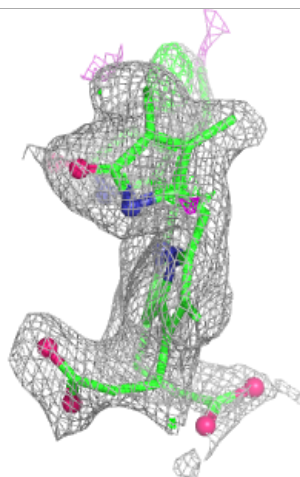
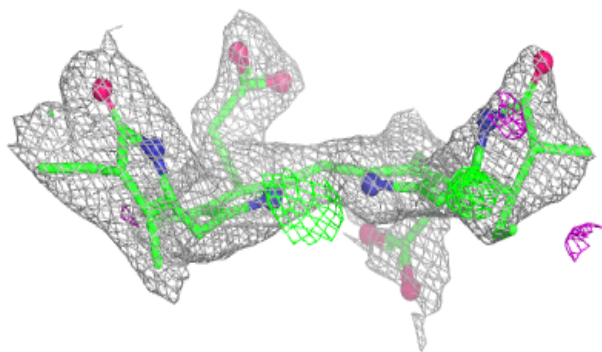
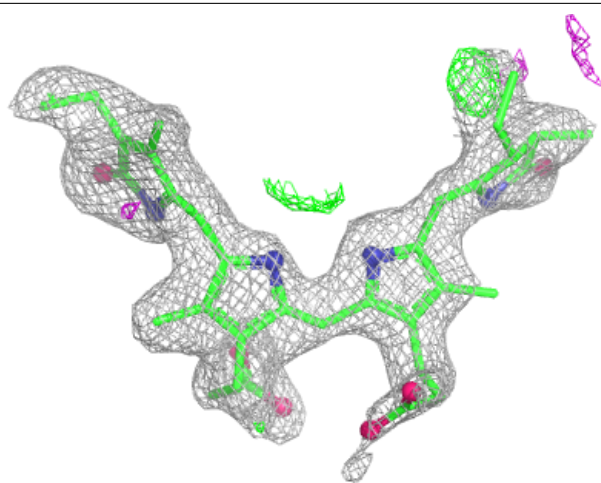
In the following table, the Atoms column lists the number of modelled atoms in the group and the number defined in the chemical component dictionary. The B-factors column lists the minimum, median, 95<sup>th</sup> percentile and maximum values of B factors of atoms in the group. The column labelled 'Q< 0.9' lists the number of atoms with occupancy less than 0.9.

Mol	Type	Chain	Res	Atoms	RSCC	RSR	B-factors(Å <sup>2</sup> )	Q<0.9
3	CYC	B	202	43/43	0.87	0.15	21,39,58,62	0
3	CYC	K	202	43/43	0.87	0.13	15,29,53,59	0
3	CYC	C	202	43/43	0.88	0.12	11,22,50,62	0
3	CYC	B	201	43/43	0.89	0.11	9,24,41,46	0
4	PUB	C	201	43/43	0.90	0.11	15,22,52,59	0
4	PUB	L	201	43/43	0.90	0.12	16,25,60,75	0
3	CYC	C	203	43/43	0.91	0.13	10,23,52,77	0
3	CYC	L	202	43/43	0.91	0.11	8,23,39,44	0
3	CYC	K	201	43/43	0.92	0.09	12,19,29,44	0
3	CYC	L	203	43/43	0.92	0.11	12,27,53,57	0

The following is a graphical depiction of the model fit to experimental electron density of all instances of the Ligand of Interest. In addition, ligands with molecular weight > 250 and outliers as shown on the geometry validation Tables will also be included. Each fit is shown from different orientation to approximate a three-dimensional view.

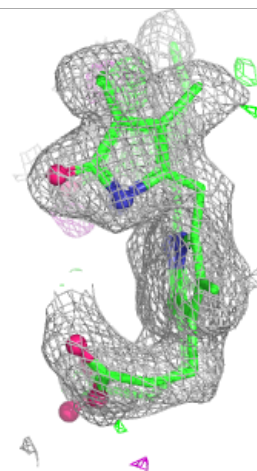
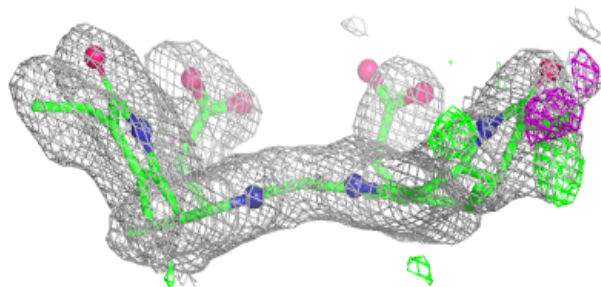
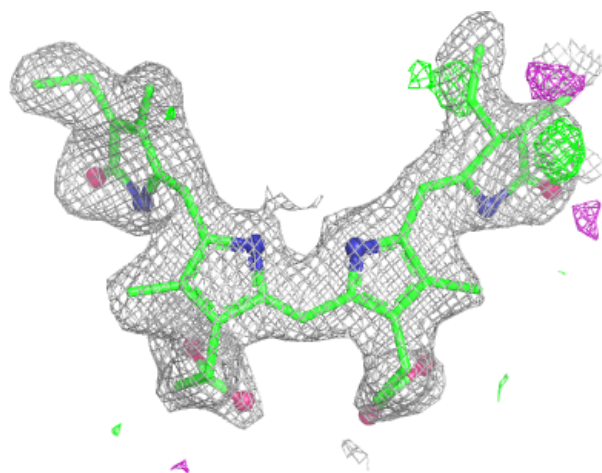
**Electron density around CYC B 202:**

$2mF_o-DF_c$  (at 0.7 rmsd) in gray  
 $mF_o-DF_c$  (at 3 rmsd) in purple (negative)  
and green (positive)



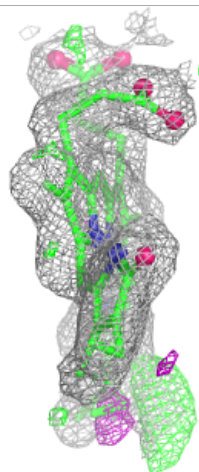
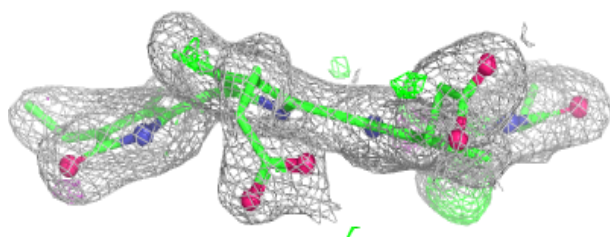
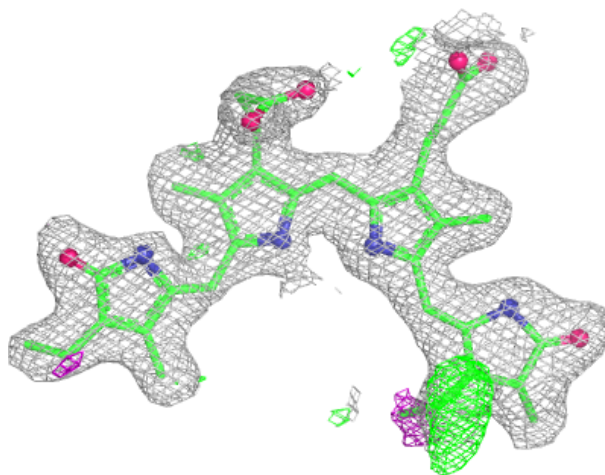
**Electron density around CYC K 202:**

$2mF_o-DF_c$  (at 0.7 rmsd) in gray  
 $mF_o-DF_c$  (at 3 rmsd) in purple (negative)  
and green (positive)



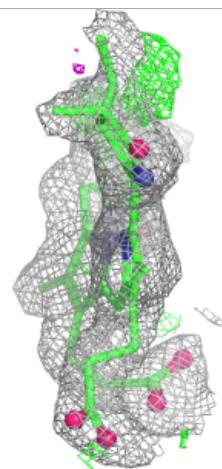
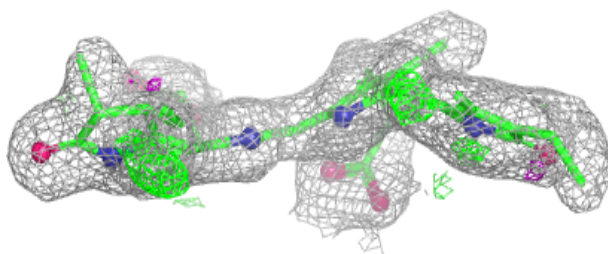
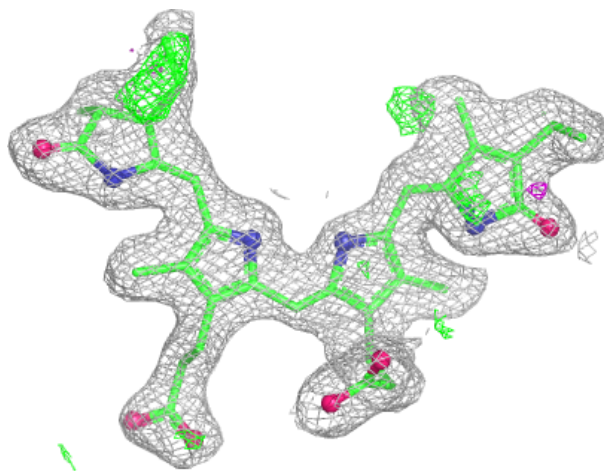
**Electron density around CYC C 202:**

$2mF_o-DF_c$  (at 0.7 rmsd) in gray  
 $mF_o-DF_c$  (at 3 rmsd) in purple (negative)  
and green (positive)

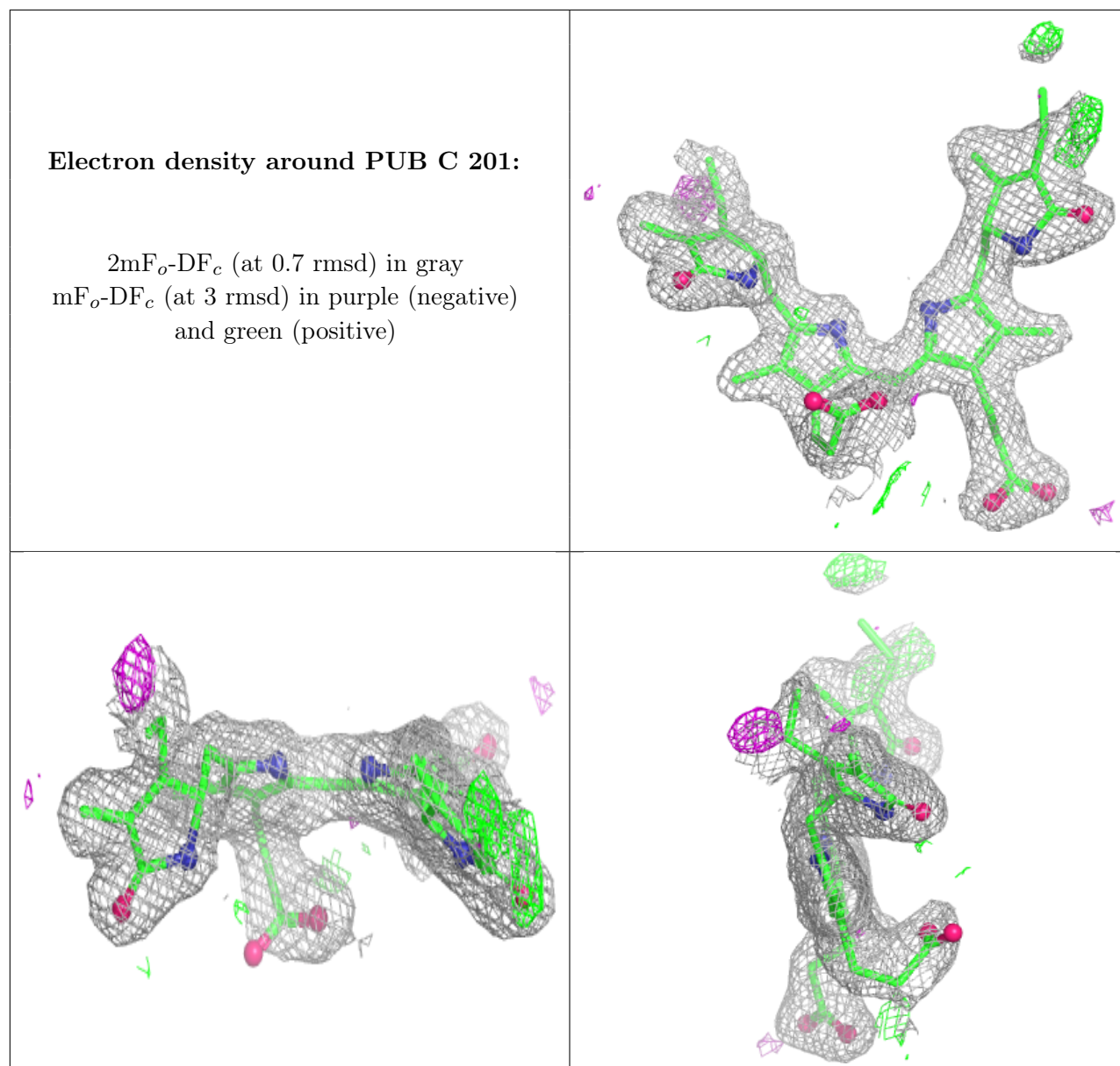


**Electron density around CYC B 201:**

$2mF_o-DF_c$  (at 0.7 rmsd) in gray  
 $mF_o-DF_c$  (at 3 rmsd) in purple (negative)  
and green (positive)

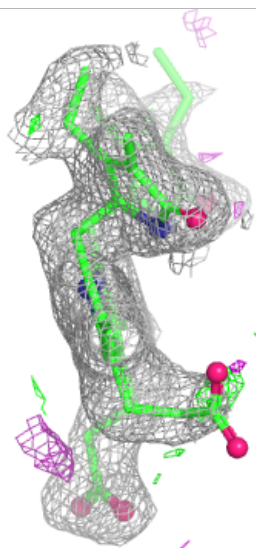
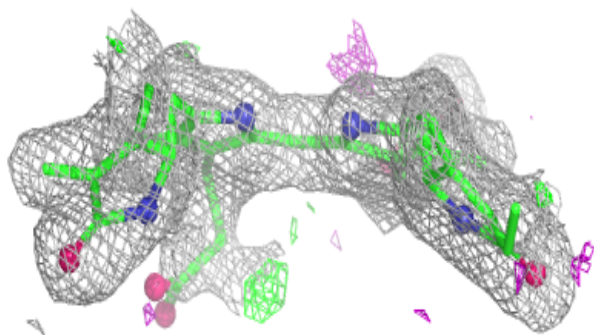
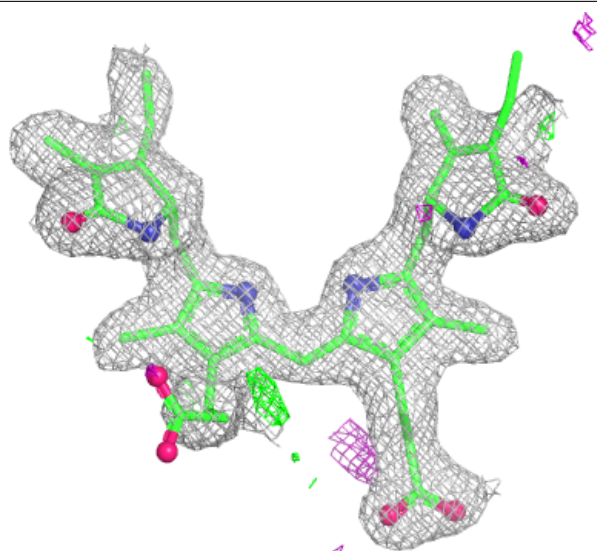


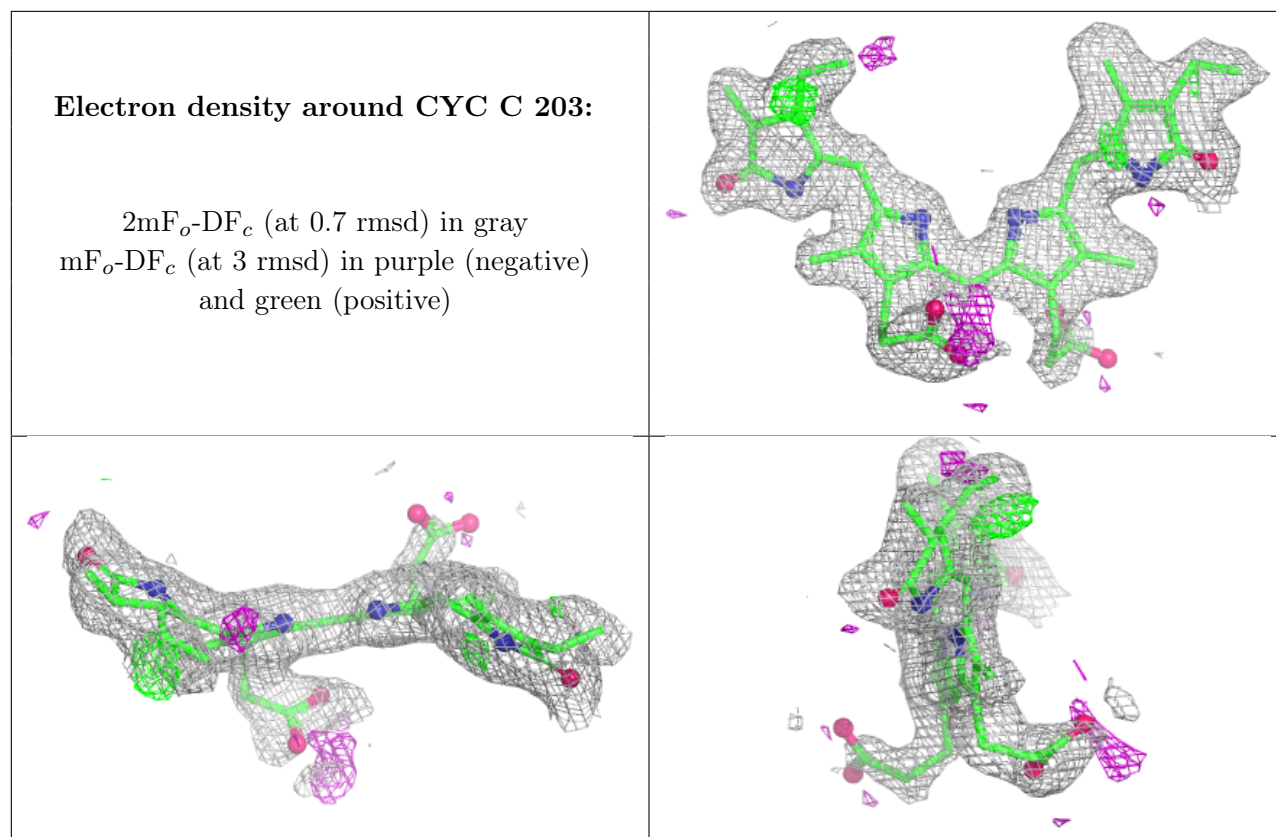




**Electron density around PUB L 201:**

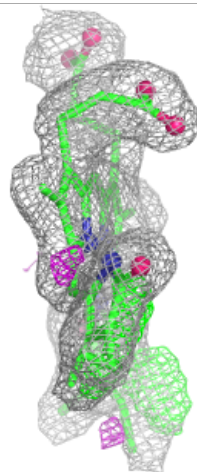
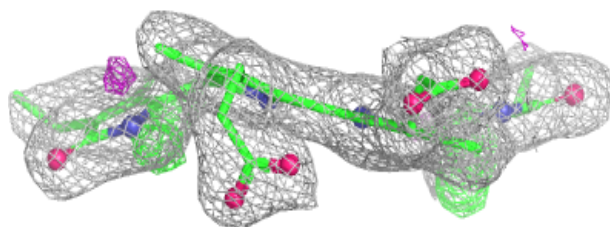
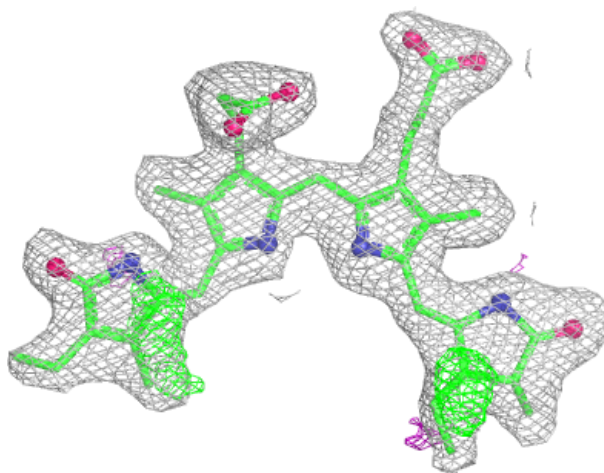
$2mF_o-DF_c$  (at 0.7 rmsd) in gray  
 $mF_o-DF_c$  (at 3 rmsd) in purple (negative)  
and green (positive)





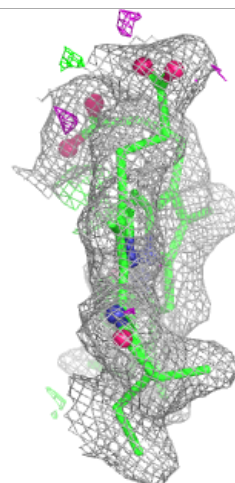
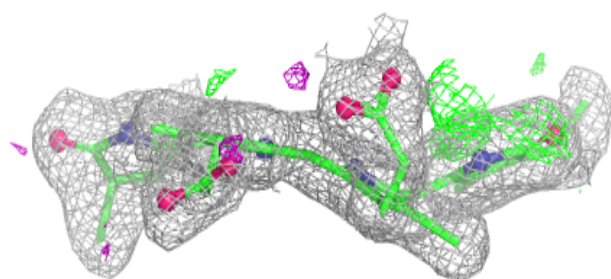
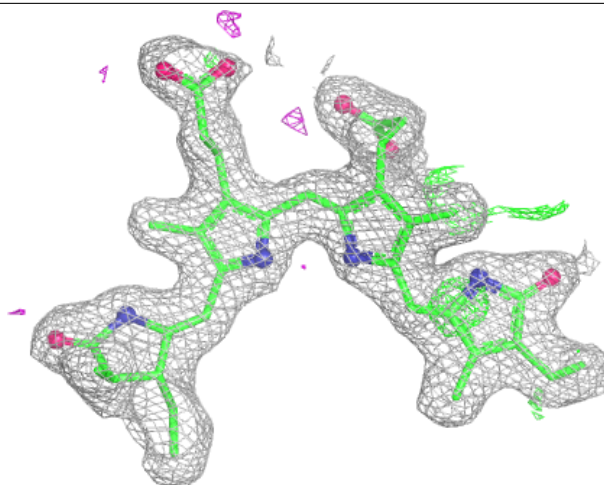
**Electron density around CYC L 202:**

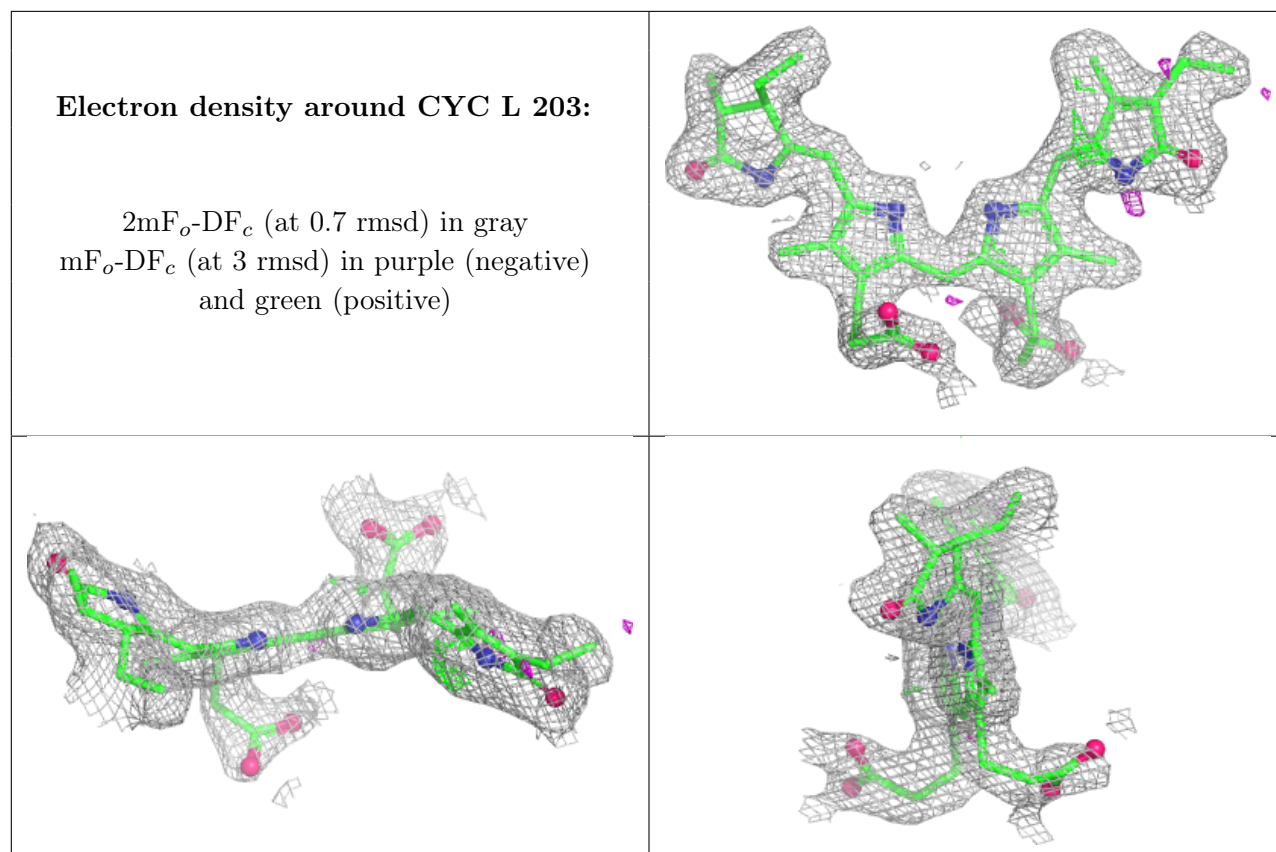
$2mF_o-DF_c$  (at 0.7 rmsd) in gray  
 $mF_o-DF_c$  (at 3 rmsd) in purple (negative)  
and green (positive)



**Electron density around CYC K 201:**

$2mF_o-DF_c$  (at 0.7 rmsd) in gray  
 $mF_o-DF_c$  (at 3 rmsd) in purple (negative)  
and green (positive)





## 6.5 Other polymers [i](#)

There are no such residues in this entry.