



Full wwPDB EM Validation Report ⓘ

Jul 1, 2024 – 10:35 AM EDT

PDB ID : 8U3K
EMDB ID : EMD-41865
Title : DdmDE handover complex
Authors : Bravo, J.P.K.
Deposited on : 2023-09-07
Resolution : 2.50 Å (reported)

This is a Full wwPDB EM Validation Report for a publicly released PDB entry.

We welcome your comments at validation@mail.wwpdb.org

A user guide is available at

<https://www.wwpdb.org/validation/2017/EMValidationReportHelp>

with specific help available everywhere you see the ⓘ symbol.

The types of validation reports are described at

<http://www.wwpdb.org/validation/2017/FAQs#types>.

The following versions of software and data (see [references ⓘ](#)) were used in the production of this report:

EMDB validation analysis : 0.0.1.dev92
MolProbity : 4.02b-467
Percentile statistics : 20191225.v01 (using entries in the PDB archive December 25th 2019)
MapQ : 1.9.13
Ideal geometry (proteins) : Engh & Huber (2001)
Ideal geometry (DNA, RNA) : Parkinson et al. (1996)
Validation Pipeline (wwPDB-VP) : 2.37.1

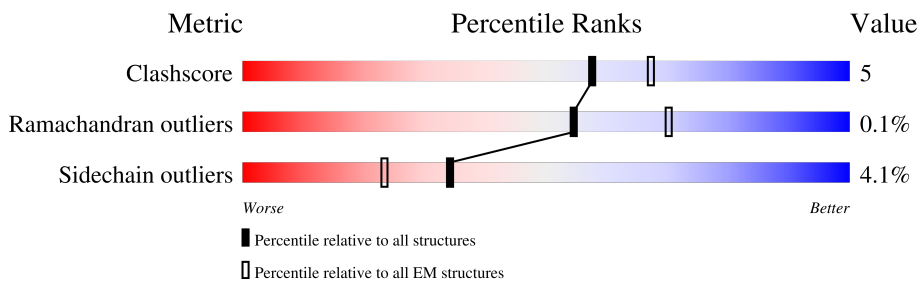
1 Overall quality at a glance i

The following experimental techniques were used to determine the structure:

ELECTRON MICROSCOPY

The reported resolution of this entry is 2.50 Å.

Percentile scores (ranging between 0-100) for global validation metrics of the entry are shown in the following graphic. The table shows the number of entries on which the scores are based.



Metric	Whole archive (#Entries)	EM structures (#Entries)
Clashscore	158937	4297
Ramachandran outliers	154571	4023
Sidechain outliers	154315	3826

The table below summarises the geometric issues observed across the polymeric chains and their fit to the map. The red, orange, yellow and green segments of the bar indicate the fraction of residues that contain outliers for ≥ 3 , 2, 1 and 0 types of geometric quality criteria respectively. A grey segment represents the fraction of residues that are not modelled. The numeric value for each fraction is indicated below the corresponding segment, with a dot representing fractions $\leq 5\%$. The upper red bar (where present) indicates the fraction of residues that have poor fit to the EM map (all-atom inclusion $< 40\%$). The numeric value is given above the bar.

Mol	Chain	Length	Quality of chain
1	A	1220	5% 78% 15% • 6%
1	F	1220	7% 80% 11% • 7%
2	C	29	10% 79% 21%
3	D	15	73% 27%
4	E	687	6% 82% 15% • •
5	G	11	73% 27%

2 Entry composition [i](#)

There are 6 unique types of molecules in this entry. The entry contains 24990 atoms, of which 0 are hydrogens and 0 are deuteriums.

In the tables below, the AltConf column contains the number of residues with at least one atom in alternate conformation and the Trace column contains the number of residues modelled with at most 2 atoms.

- Molecule 1 is a protein called Helicase/UvrB N-terminal domain-containing protein.

Mol	Chain	Residues	Atoms					AltConf	Trace
			Total	C	N	O	S		
1	A	1150	Total	C	N	O	S	0	0
			9279	5878	1616	1762	23		
1	F	1133	Total	C	N	O	S	0	0
			9142	5794	1593	1732	23		

- Molecule 2 is a DNA chain called DNA (29-MER).

Mol	Chain	Residues	Atoms					AltConf	Trace
			Total	C	N	O	P		
2	C	29	Total	C	N	O	P	0	0
			582	286	77	190	29		

- Molecule 3 is a DNA chain called DNA (5'-D(P*GP*GP*AP*AP*AP*TP*GP*TP*TP*GP*AP*AP*TP*AP*C)-3').

Mol	Chain	Residues	Atoms					AltConf	Trace
			Total	C	N	O	P		
3	D	15	Total	C	N	O	P	0	0
			313	149	61	88	15		

- Molecule 4 is a protein called DdmE.

Mol	Chain	Residues	Atoms					AltConf	Trace
			Total	C	N	O	S		
4	E	669	Total	C	N	O	S	0	0
			5453	3506	913	1020	14		

- Molecule 5 is a DNA chain called DNA (5'-D(P*TP*TP*TP*TP*TP*TP*TP*TP*TP*TP*T)-3').

Mol	Chain	Residues	Atoms					AltConf	Trace
			Total	C	N	O	P		
5	G	11	Total	C	N	O	P	0	0
			220	110	22	77	11		

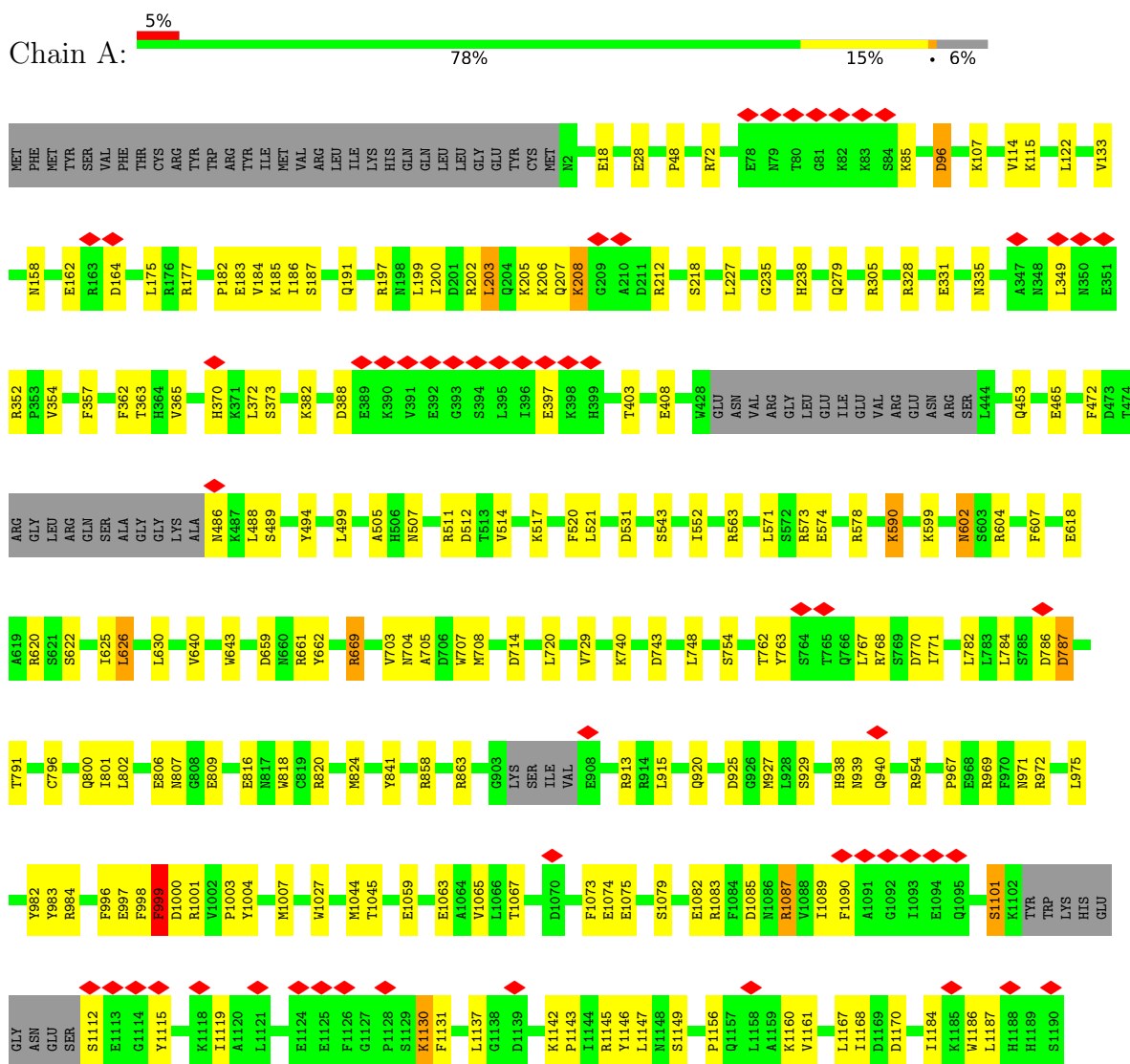
- Molecule 6 is MAGNESIUM ION (three-letter code: MG) (formula: Mg) (labeled as "Ligand of Interest" by depositor).

Mol	Chain	Residues	Atoms		AltConf
6	D	1	Total	Mg	0
			1	1	

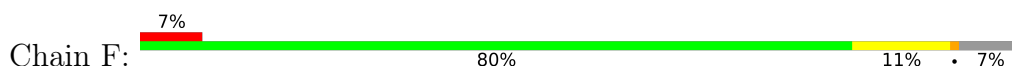
3 Residue-property plots

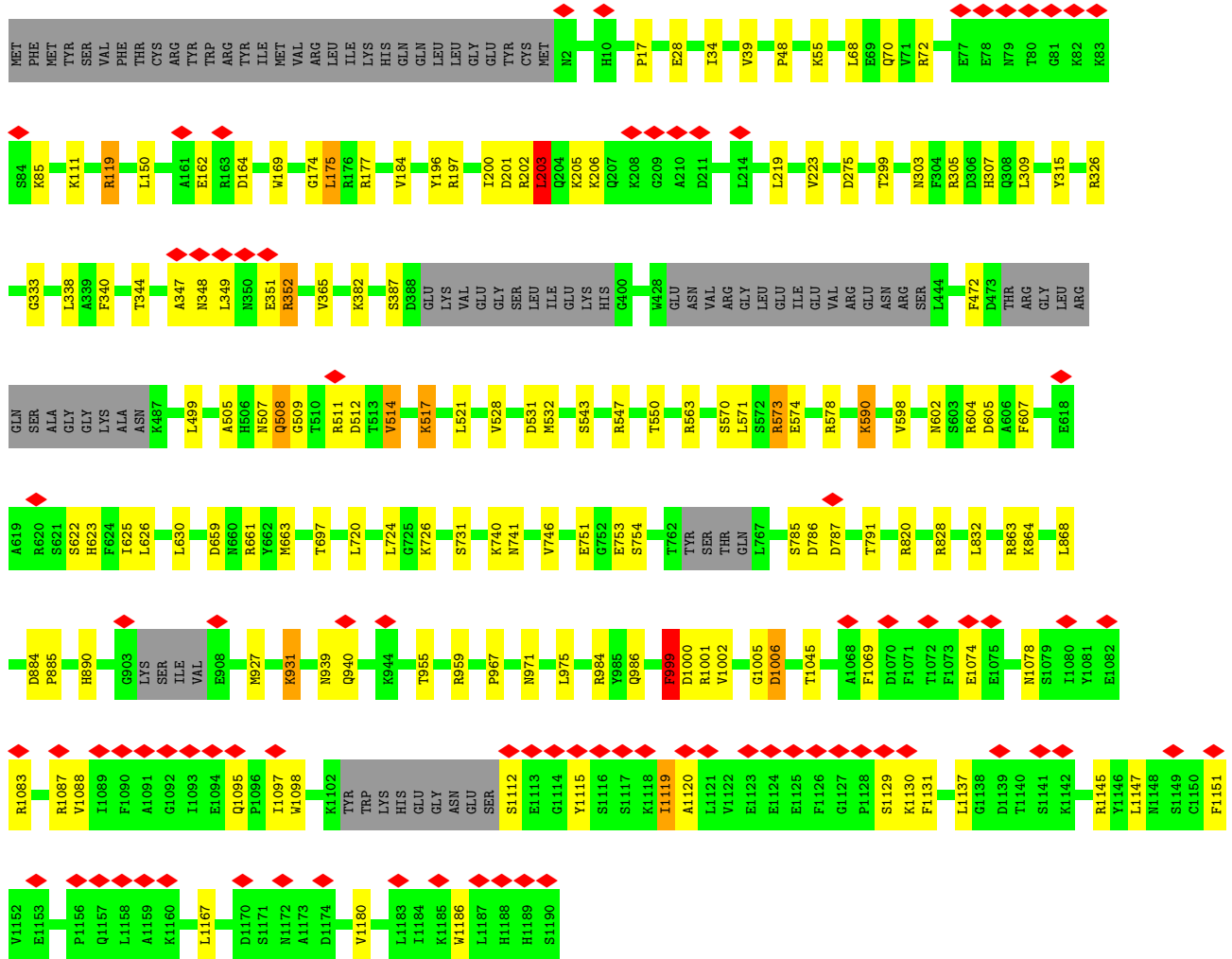
These plots are drawn for all protein, RNA, DNA and oligosaccharide chains in the entry. The first graphic for a chain summarises the proportions of the various outlier classes displayed in the second graphic. The second graphic shows the sequence view annotated by issues in geometry and atom inclusion in map density. Residues are color-coded according to the number of geometric quality criteria for which they contain at least one outlier: green = 0, yellow = 1, orange = 2 and red = 3 or more. A red diamond above a residue indicates a poor fit to the EM map for this residue (all-atom inclusion < 40%). Stretches of 2 or more consecutive residues without any outlier are shown as a green connector. Residues present in the sample, but not in the model, are shown in grey.

- Molecule 1: Helicase/UvrB N-terminal domain-containing protein

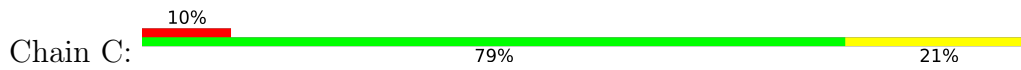


- Molecule 1: Helicase/UvrB N-terminal domain-containing protein





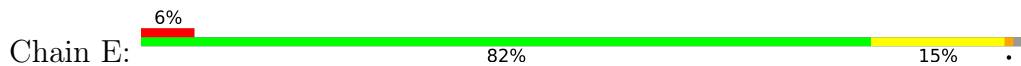
• Molecule 2: DNA (29-MER)

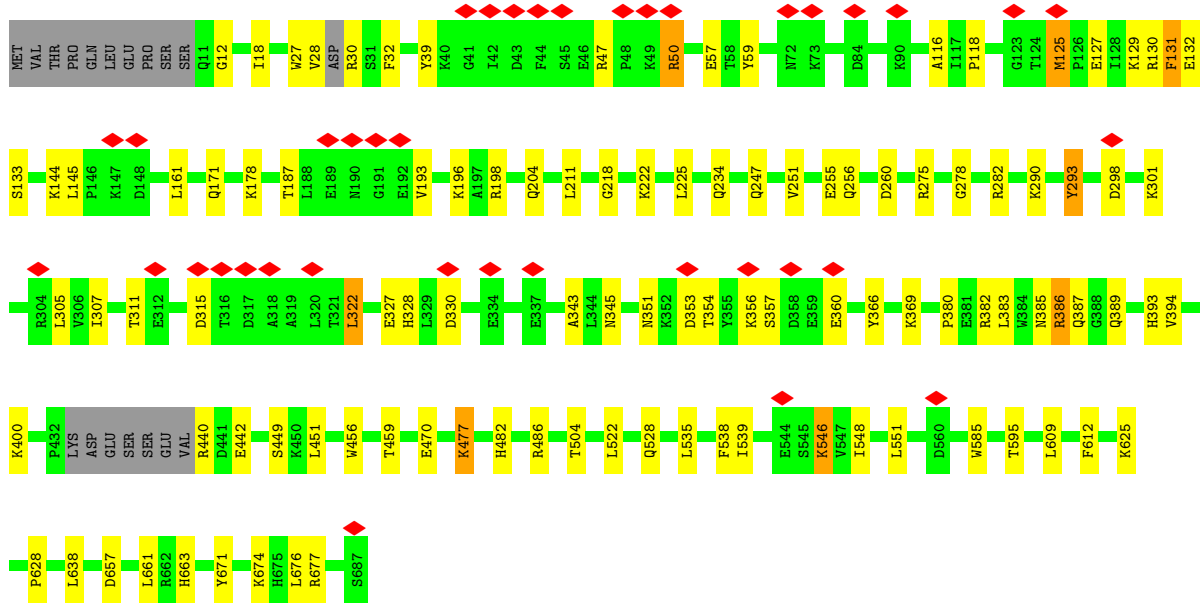


• Molecule 3: DNA (5'-D(P*GP*GP*AP*AP*AP*TP*GP*TP*TP*GP*AP*AP*TP*AP*C)-3')

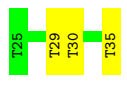


• Molecule 4: DdmE





• Molecule 5: DNA (5'-D(P*TP*TP*TP*TP*TP*TP*TP*TP*TP*TP*T)-3')



4 Experimental information

Property	Value	Source
EM reconstruction method	SINGLE PARTICLE	Depositor
Imposed symmetry	POINT, Not provided	
Number of particles used	1497134	Depositor
Resolution determination method	FSC 0.143 CUT-OFF	Depositor
CTF correction method	PHASE FLIPPING AND AMPLITUDE CORRECTION	Depositor
Microscope	TFS GLACIOS	Depositor
Voltage (kV)	200	Depositor
Electron dose ($e^-/\text{\AA}^2$)	40	Depositor
Minimum defocus (nm)	1500	Depositor
Maximum defocus (nm)	2500	Depositor
Magnification	Not provided	
Image detector	GATAN K3 (6k x 4k)	Depositor
Maximum map value	0.786	Depositor
Minimum map value	-0.217	Depositor
Average map value	0.001	Depositor
Map value standard deviation	0.011	Depositor
Recommended contour level	0.1	Depositor
Map size (Å)	426.5984, 426.5984, 426.5984	wwPDB
Map dimensions	512, 512, 512	wwPDB
Map angles (°)	90.0, 90.0, 90.0	wwPDB
Pixel spacing (Å)	0.8332, 0.8332, 0.8332	Depositor

5 Model quality i

5.1 Standard geometry i

Bond lengths and bond angles in the following residue types are not validated in this section: MG

The Z score for a bond length (or angle) is the number of standard deviations the observed value is removed from the expected value. A bond length (or angle) with $|Z| > 5$ is considered an outlier worth inspection. RMSZ is the root-mean-square of all Z scores of the bond lengths (or angles).

Mol	Chain	Bond lengths		Bond angles	
		RMSZ	# Z >5	RMSZ	# Z >5
1	A	0.45	0/9464	0.54	3/12790 (0.0%)
1	F	0.39	0/9323	0.50	5/12597 (0.0%)
2	C	0.93	0/644	1.19	0/991
3	D	1.05	0/352	0.94	0/542
4	E	0.43	0/5586	0.50	1/7555 (0.0%)
5	G	1.00	0/241	1.30	0/370
All	All	0.47	0/25610	0.57	9/34845 (0.0%)

Chiral center outliers are detected by calculating the chiral volume of a chiral center and verifying if the center is modelled as a planar moiety or with the opposite hand. A planarity outlier is detected by checking planarity of atoms in a peptide group, atoms in a mainchain group or atoms of a sidechain that are expected to be planar.

Mol	Chain	#Chirality outliers	#Planarity outliers
1	A	0	1
1	F	0	1
All	All	0	2

There are no bond length outliers.

All (9) bond angle outliers are listed below:

Mol	Chain	Res	Type	Atoms	Z	Observed(°)	Ideal(°)
1	A	203	LEU	CA-CB-CG	7.63	132.85	115.30
1	A	787	ASP	CB-CG-OD1	7.19	124.77	118.30
1	F	1119	ILE	CG1-CB-CG2	-6.54	97.01	111.40
1	F	203	LEU	CA-CB-CG	6.49	130.22	115.30
1	F	201	ASP	CB-CG-OD2	5.48	123.23	118.30
1	F	1167	LEU	CA-CB-CG	5.34	127.58	115.30
1	F	724	LEU	CA-CB-CG	5.13	127.10	115.30
1	A	824	MET	CB-CG-SD	5.05	127.55	112.40

Continued on next page...

Continued from previous page...

Mol	Chain	Res	Type	Atoms	Z	Observed($^{\circ}$)	Ideal($^{\circ}$)
4	E	305	LEU	CA-CB-CG	5.05	126.91	115.30

There are no chirality outliers.

All (2) planarity outliers are listed below:

Mol	Chain	Res	Type	Group
1	A	999	PHE	Peptide
1	F	999	PHE	Peptide

5.2 Too-close contacts [i](#)

In the following table, the Non-H and H(model) columns list the number of non-hydrogen atoms and hydrogen atoms in the chain respectively. The H(added) column lists the number of hydrogen atoms added and optimized by MolProbity. The Clashes column lists the number of clashes within the asymmetric unit, whereas Symm-Clashes lists symmetry-related clashes.

Mol	Chain	Non-H	H(model)	H(added)	Clashes	Symm-Clashes
1	A	9279	0	9169	106	0
1	F	9142	0	9035	82	0
2	C	582	0	340	9	0
3	D	313	0	170	4	0
4	E	5453	0	5409	56	0
5	G	220	0	133	2	0
6	D	1	0	0	0	0
All	All	24990	0	24256	243	0

The all-atom clashscore is defined as the number of clashes found per 1000 atoms (including hydrogen atoms). The all-atom clashscore for this structure is 5.

All (243) close contacts within the same asymmetric unit are listed below, sorted by their clash magnitude.

Atom-1	Atom-2	Interatomic distance (\AA)	Clash overlap (\AA)
1:A:1131:PHE:HB2	1:A:1161:VAL:HG12	1.64	0.77
1:A:357:PHE:HE1	1:A:499:LEU:HD12	1.53	0.74
4:E:28:VAL:O	4:E:30:ARG:N	2.22	0.72
1:F:382:LYS:NZ	1:F:512:ASP:O	2.23	0.71
1:A:590:LYS:H	1:A:590:LYS:HD2	1.54	0.71
1:F:70:GLN:HE21	1:F:85:LYS:HD2	1.55	0.71
1:F:17:PRO:HD3	1:F:119:ARG:HH11	1.54	0.71

Continued on next page...

Continued from previous page...

Atom-1	Atom-2	Interatomic distance (Å)	Clash overlap (Å)
1:A:1149:SER:HB3	1:A:1160:LYS:HD2	1.73	0.70
1:F:1069:PHE:HD2	1:F:1180:VAL:HG11	1.56	0.70
1:A:305:ARG:HH21	1:F:305:ARG:HD2	1.57	0.70
1:F:999:PHE:O	1:F:1001:ARG:N	2.26	0.68
1:A:999:PHE:O	1:A:1001:ARG:N	2.28	0.67
1:A:365:VAL:HG11	1:A:820:ARG:HA	1.77	0.66
4:E:535:LEU:HD22	4:E:551:LEU:HD11	1.77	0.66
1:A:552:ILE:HD12	1:A:800:GLN:HG2	1.79	0.65
1:A:205:LYS:HA	1:A:208:LYS:HD3	1.78	0.65
1:A:305:ARG:HD2	1:F:305:ARG:HH21	1.60	0.65
1:F:68:LEU:HD11	1:F:119:ARG:HH22	1.62	0.64
1:F:347:ALA:HB1	1:F:352:ARG:HH12	1.62	0.64
1:A:754:SER:OG	1:A:863:ARG:NH2	2.29	0.64
1:A:743:ASP:OD1	1:A:768:ARG:NE	2.28	0.64
1:A:1156:PRO:O	1:A:1186:TRP:NE1	2.31	0.64
1:F:307:HIS:O	1:F:326:ARG:NH1	2.31	0.63
1:F:754:SER:OG	1:F:863:ARG:NH2	2.31	0.63
1:F:531:ASP:OD1	1:F:563:ARG:NH1	2.29	0.63
5:G:29:DT:H2''	5:G:30:DT:H5''	1.81	0.63
4:E:116:ALA:HA	4:E:132:GLU:HG3	1.81	0.62
4:E:353:ASP:OD1	4:E:353:ASP:N	2.32	0.62
1:F:1130:LYS:NZ	1:F:1186:TRP:O	2.33	0.62
1:A:620:ARG:NH1	4:E:247:GLN:O	2.33	0.62
4:E:609:LEU:HD11	4:E:628:PRO:HG3	1.80	0.62
1:A:453:GLN:NE2	1:A:465:GLU:OE1	2.32	0.61
1:F:967:PRO:HG2	1:F:971:ASN:HA	1.83	0.61
2:C:19:DT:OP2	4:E:393:HIS:NE2	2.32	0.61
4:E:343:ALA:O	4:E:345:ASN:ND2	2.33	0.61
1:A:164:ASP:OD2	1:A:164:ASP:N	2.33	0.61
1:A:531:ASP:OD1	1:A:563:ARG:NH1	2.26	0.61
1:F:605:ASP:OD2	1:F:605:ASP:N	2.33	0.60
1:A:816:GLU:OE2	1:A:820:ARG:NH1	2.34	0.60
1:A:740:LYS:O	1:A:858:ARG:NH2	2.35	0.60
4:E:449:SER:HB3	4:E:676:LEU:HD13	1.83	0.60
1:A:207:GLN:O	1:A:212:ARG:NH2	2.34	0.60
2:C:18:DC:H42	4:E:293:TYR:HB3	1.67	0.59
1:F:351:GLU:HB3	1:F:352:ARG:HH21	1.67	0.59
2:C:21:DT:H5''	4:E:386:ARG:HH11	1.66	0.59
1:A:748:LEU:HD21	1:A:767:LEU:HD12	1.85	0.58
1:A:494:TYR:HB3	1:A:806:GLU:HG3	1.86	0.58
1:A:85:LYS:NZ	1:A:235:GLY:O	2.37	0.58

Continued on next page...

Continued from previous page...

Atom-1	Atom-2	Interatomic distance (Å)	Clash overlap (Å)
1:A:925:ASP:OD2	1:A:972:ARG:NH2	2.37	0.57
4:E:661:LEU:HD11	4:E:671:TYR:HA	1.85	0.57
1:A:357:PHE:CE1	1:A:499:LEU:HD12	2.37	0.57
3:D:4:DA:OP1	4:E:677:ARG:NH2	2.37	0.57
4:E:178:LYS:HD2	4:E:222:LYS:HD3	1.86	0.57
1:A:1142:LYS:NZ	1:A:1143:PRO:O	2.35	0.57
1:F:622:SER:HA	1:F:625:ILE:HD12	1.86	0.56
1:F:1129:SER:HB2	1:F:1131:PHE:HE1	1.69	0.56
4:E:129:LYS:HE2	4:E:131:PHE:HE2	1.70	0.56
1:F:975:LEU:HD23	1:F:1045:THR:HG22	1.88	0.56
1:A:626:LEU:HD23	1:A:630:LEU:HD12	1.86	0.56
1:A:938:HIS:NE2	1:A:1082:GLU:OE1	2.38	0.55
1:A:984:ARG:NH2	1:A:1003:PRO:O	2.36	0.55
1:A:940:GLN:NE2	1:A:1079:SER:O	2.38	0.55
1:A:1085:ASP:OD2	1:A:1101:SER:N	2.38	0.55
4:E:522:LEU:HD11	4:E:595:THR:HG22	1.88	0.55
1:F:349:LEU:HD11	1:F:505:ALA:HA	1.89	0.55
1:A:807:ASN:HB3	1:A:809:GLU:HG2	1.88	0.55
1:F:219:LEU:O	1:F:223:VAL:HG23	2.07	0.55
2:C:17:DC:H2'	4:E:393:HIS:CD2	2.42	0.55
1:F:275:ASP:OD1	1:F:275:ASP:N	2.34	0.55
1:A:28:GLU:OE1	1:A:578:ARG:NH1	2.40	0.54
1:A:1085:ASP:OD2	1:A:1101:SER:OG	2.26	0.54
1:A:488:LEU:HD21	1:A:929:SER:HB3	1.88	0.54
1:A:704:ASN:H	1:A:707:TRP:HB3	1.72	0.53
1:A:954:ARG:NH1	1:A:1059:GLU:OE2	2.42	0.53
1:A:499:LEU:HD23	1:A:521:LEU:HB2	1.90	0.53
1:A:574:GLU:OE1	1:A:578:ARG:NE	2.40	0.53
1:F:590:LYS:H	1:F:590:LYS:HD2	1.72	0.53
1:A:1087:ARG:HH11	1:A:1089:ILE:HD11	1.73	0.53
1:A:705:ALA:HB2	2:C:27:DT:H5''	1.90	0.53
4:E:12:GLY:O	4:E:275:ARG:NH2	2.38	0.53
4:E:59:TYR:OH	4:E:133:SER:HB2	2.09	0.53
4:E:307:ILE:HD12	4:E:322:LEU:HD23	1.91	0.53
1:A:182:PRO:O	1:A:186:ILE:HD12	2.09	0.53
4:E:482:HIS:HA	4:E:486:ARG:HH11	1.73	0.53
1:A:983:TYR:OH	1:A:1044:MET:O	2.21	0.52
4:E:50:ARG:NH1	4:E:57:GLU:OE1	2.34	0.52
1:F:626:LEU:HD23	1:F:630:LEU:HD12	1.90	0.52
1:A:328:ARG:NH1	1:A:408:GLU:OE1	2.41	0.51
1:A:382:LYS:NZ	1:A:512:ASP:O	2.41	0.51

Continued on next page...

Continued from previous page...

Atom-1	Atom-2	Interatomic distance (Å)	Clash overlap (Å)
1:A:182:PRO:O	1:A:185:LYS:N	2.42	0.51
1:F:753:GLU:O	1:F:864:LYS:NZ	2.38	0.50
4:E:357:SER:HB2	4:E:360:GLU:HG3	1.93	0.50
1:F:197:ARG:HH11	5:G:35:DT:H3'	1.76	0.50
1:F:164:ASP:OD2	1:F:202:ARG:NH1	2.45	0.50
1:A:1065:VAL:HG11	1:A:1167:LEU:HD11	1.93	0.50
4:E:539:ILE:HG23	4:E:548:ILE:HD11	1.93	0.50
4:E:193:VAL:O	4:E:198:ARG:NH1	2.44	0.49
1:F:785:SER:OG	1:F:828:ARG:NH2	2.45	0.49
1:A:85:LYS:HG3	1:A:238:HIS:HB3	1.94	0.49
1:A:114:VAL:HG12	1:A:115:LYS:HG2	1.94	0.49
1:A:1119:ILE:HA	1:A:1131:PHE:HE1	1.77	0.49
4:E:298:ASP:OD1	4:E:301:LYS:NZ	2.45	0.49
1:F:365:VAL:HG11	1:F:820:ARG:HA	1.94	0.49
1:A:162:GLU:OE1	1:A:202:ARG:NH2	2.46	0.49
1:F:986:GLN:HB2	1:F:1002:VAL:HG11	1.94	0.49
1:F:340:PHE:HB3	1:F:382:LYS:HA	1.94	0.49
4:E:282:ARG:NH1	4:E:657:ASP:OD1	2.46	0.49
1:A:331:GLU:OE2	1:A:335:ASN:ND2	2.43	0.49
1:F:1006:ASP:OD1	1:F:1006:ASP:N	2.45	0.49
1:A:782:LEU:HD12	1:A:841:TYR:HE1	1.78	0.49
1:A:1145:ARG:NH2	1:A:1147:LEU:HD11	2.28	0.49
1:F:28:GLU:OE1	1:F:578:ARG:NH1	2.45	0.49
1:F:150:LEU:HD22	1:F:169:TRP:CE2	2.48	0.49
1:A:975:LEU:HD23	1:A:1045:THR:HG22	1.95	0.48
4:E:187:THR:HA	4:E:193:VAL:HA	1.94	0.48
4:E:125:MET:O	4:E:127:GLU:N	2.46	0.48
1:F:787:ASP:OD1	1:F:787:ASP:N	2.43	0.48
1:A:1170:ASP:N	1:A:1170:ASP:OD2	2.43	0.48
1:A:982:TYR:HB2	1:A:1007:MET:HE3	1.96	0.48
1:A:199:LEU:O	1:A:203:LEU:HD12	2.14	0.48
1:F:177:ARG:CZ	1:F:177:ARG:HA	2.44	0.47
1:F:1074:GLU:HB2	1:F:1087:ARG:HB3	1.95	0.47
1:F:547:ARG:NH1	1:F:570:SER:OG	2.47	0.47
1:A:352:ARG:NH1	4:E:315:ASP:OD2	2.36	0.47
4:E:538:PHE:HB2	4:E:585:TRP:CZ3	2.49	0.47
1:F:1088:VAL:HG12	1:F:1097:ILE:HD12	1.95	0.47
1:F:34:ILE:HD12	1:F:39:VAL:HA	1.95	0.47
1:A:96:ASP:OD2	1:A:96:ASP:N	2.44	0.47
1:A:183:GLU:HG2	1:F:174:GLY:HA3	1.96	0.47
4:E:661:LEU:HD22	4:E:674:LYS:HG2	1.96	0.47

Continued on next page...

Continued from previous page...

Atom-1	Atom-2	Interatomic distance (Å)	Clash overlap (Å)
1:F:1112:SER:HA	1:F:1115:TYR:HD2	1.79	0.47
1:F:590:LYS:HZ1	1:F:890:HIS:CD2	2.33	0.47
1:A:370:HIS:HB3	1:A:388:ASP:O	2.15	0.47
1:A:1119:ILE:HG12	1:A:1131:PHE:CD1	2.49	0.46
4:E:351:ASN:HB3	4:E:354:THR:HG23	1.96	0.46
1:F:70:GLN:HE22	1:F:85:LYS:HA	1.78	0.46
1:A:48:PRO:HA	1:A:543:SER:O	2.15	0.46
1:A:640:VAL:HA	1:A:643:TRP:CD1	2.51	0.46
1:F:175:LEU:HD22	1:F:184:VAL:HG13	1.98	0.46
1:A:1146:TYR:HE1	1:A:1186:TRP:HD1	1.64	0.46
2:C:21:DT:H1'	4:E:387:GLN:HB2	1.97	0.46
1:A:1130:LYS:HE2	1:A:1186:TRP:CZ2	2.51	0.46
1:A:362:PHE:CD2	1:A:363:THR:HG23	2.51	0.46
1:F:48:PRO:HA	1:F:543:SER:O	2.16	0.46
1:A:599:LYS:HB3	1:A:599:LYS:HE3	1.63	0.46
1:A:997:GLU:N	1:A:997:GLU:OE1	2.49	0.46
1:A:1184:ILE:HD12	1:A:1187:LEU:HB2	1.97	0.46
1:A:328:ARG:NH2	1:A:331:GLU:OE1	2.50	0.45
1:F:196:TYR:O	1:F:200:ILE:HG12	2.16	0.45
1:F:1098:TRP:HD1	1:F:1131:PHE:CE1	2.35	0.45
4:E:311:THR:HG21	4:E:380:PRO:HG3	1.98	0.45
1:F:955:THR:HG22	1:F:959:ARG:HH22	1.82	0.45
1:A:202:ARG:HA	1:A:205:LYS:NZ	2.32	0.45
1:A:622:SER:HA	1:A:625:ILE:HD12	1.99	0.45
4:E:551:LEU:HD12	4:E:551:LEU:HA	1.78	0.45
1:A:784:LEU:HB2	1:A:800:GLN:NE2	2.31	0.45
4:E:366:TYR:HA	4:E:369:LYS:HB3	1.98	0.45
1:F:70:GLN:NE2	1:F:85:LYS:HA	2.32	0.45
4:E:440:ARG:NE	4:E:442:GLU:OE2	2.49	0.45
1:F:940:GLN:HE21	1:F:1083:ARG:HH11	1.64	0.45
1:F:517:LYS:HB2	1:F:517:LYS:HE2	1.72	0.45
1:F:348:ASN:O	1:F:352:ARG:NH2	2.50	0.44
1:A:187:SER:O	1:A:191:GLN:HG3	2.17	0.44
2:C:16:DT:H3	3:D:3:DA:H61	1.64	0.44
1:A:200:ILE:HD12	1:A:227:LEU:HD11	1.99	0.44
1:A:602:ASN:OD1	1:A:602:ASN:N	2.36	0.44
3:D:14:DA:H2''	3:D:15:DC:C5	2.52	0.44
1:A:801:ILE:H	1:A:801:ILE:HG13	1.62	0.44
3:D:14:DA:H1'	3:D:15:DC:C2	2.53	0.44
1:F:661:ARG:NH1	1:F:720:LEU:O	2.50	0.44
4:E:145:LEU:HD23	4:E:145:LEU:HA	1.80	0.43

Continued on next page...

Continued from previous page...

Atom-1	Atom-2	Interatomic distance (Å)	Clash overlap (Å)
4:E:504:THR:OG1	4:E:638:LEU:O	2.31	0.43
1:F:746:VAL:HG13	1:F:751:GLU:HG3	1.99	0.43
1:F:1119:ILE:HD12	1:F:1120:ALA:N	2.32	0.43
1:A:186:ILE:HD12	1:A:186:ILE:H	1.82	0.43
1:A:175:LEU:HD22	1:A:184:VAL:HG13	1.99	0.43
4:E:118:PRO:HG3	4:E:211:LEU:HD13	2.00	0.43
1:F:659:ASP:OD1	1:F:659:ASP:N	2.48	0.43
1:F:697:THR:HG22	1:F:726:LYS:HB2	1.99	0.43
1:A:967:PRO:HG2	1:A:971:ASN:HA	2.01	0.43
1:F:574:GLU:OE2	1:F:578:ARG:NE	2.50	0.43
2:C:18:DC:N4	4:E:293:TYR:HB3	2.33	0.43
4:E:256:GLN:NE2	4:E:260:ASP:OD1	2.51	0.43
1:F:598:VAL:HG22	1:F:868:LEU:HD12	2.01	0.43
1:A:486:ASN:OD1	1:A:489:SER:OG	2.37	0.43
1:A:708:MET:HE1	1:A:740:LYS:HG2	2.01	0.43
1:A:1112:SER:HA	1:A:1115:TYR:HD2	1.84	0.42
4:E:470:GLU:HG2	4:E:477:LYS:HE3	2.01	0.42
1:A:354:VAL:HG21	1:A:372:LEU:HD11	2.00	0.42
1:A:998:PHE:HB3	1:A:999:PHE:H	1.64	0.42
4:E:129:LYS:HE2	4:E:131:PHE:CE2	2.53	0.42
1:A:489:SER:O	1:A:969:ARG:NE	2.49	0.42
4:E:18:ILE:HD11	4:E:161:LEU:HD22	2.02	0.42
1:A:494:TYR:HB3	1:A:806:GLU:CG	2.49	0.42
1:A:786:ASP:HB2	1:A:791:THR:HG21	2.02	0.42
1:F:309:LEU:HD13	1:F:315:TYR:HB3	2.00	0.42
1:F:70:GLN:NE2	1:F:85:LYS:HD2	2.29	0.42
1:A:185:LYS:HB3	1:A:185:LYS:HE3	1.79	0.42
1:A:915:LEU:HD23	1:A:915:LEU:HA	1.85	0.42
4:E:204:GLN:HG2	4:E:218:GLY:HA2	2.01	0.42
1:F:508:GLN:OE1	1:F:509:GLY:N	2.53	0.42
1:F:203:LEU:HA	1:F:206:LYS:HD2	2.01	0.42
4:E:278:GLY:HA2	4:E:612:PHE:CE2	2.56	0.41
1:F:344:THR:HG23	1:F:514:VAL:HG21	2.02	0.41
1:A:1167:LEU:O	1:A:1168:ILE:HD13	2.20	0.41
1:A:1027:TRP:HZ3	1:A:1067:THR:HG21	1.85	0.41
4:E:385:ASN:HB2	4:E:389:GLN:OE1	2.20	0.41
4:E:546:LYS:H	4:E:546:LYS:HG2	1.66	0.41
1:F:111:LYS:HE3	1:F:111:LYS:HA	2.03	0.41
1:A:1063:GLU:HG3	1:A:1073:PHE:CD2	2.55	0.41
4:E:382:ARG:O	4:E:394:VAL:HG11	2.20	0.41
1:F:573:ARG:NH2	1:F:884:ASP:OD2	2.46	0.41

Continued on next page...

Continued from previous page...

Atom-1	Atom-2	Interatomic distance (Å)	Clash overlap (Å)
1:F:786:ASP:HB2	1:F:791:THR:HG21	2.03	0.41
1:F:927:MET:O	1:F:931:LYS:HD3	2.20	0.41
1:F:1078:ASN:OD1	1:F:1078:ASN:N	2.54	0.41
1:A:349:LEU:HD21	1:A:505:ALA:HA	2.03	0.41
1:F:333:GLY:HA2	1:F:338:LEU:HG	2.01	0.41
1:F:299:THR:O	1:F:303:ASN:ND2	2.51	0.41
1:F:499:LEU:HG	1:F:521:LEU:HB2	2.03	0.41
1:A:801:ILE:HG23	1:A:818:TRP:CE3	2.56	0.41
1:A:1090:PHE:CE2	1:A:1184:ILE:HD11	2.56	0.41
1:F:984:ARG:HH21	1:F:1005:GLY:H	1.67	0.41
4:E:451:LEU:HD13	4:E:456:TRP:CE2	2.56	0.41
1:F:528:VAL:O	1:F:532:MET:HG3	2.21	0.41
1:F:1115:TYR:O	1:F:1119:ILE:HG13	2.21	0.41
1:A:604:ARG:HB3	1:A:607:PHE:HB3	2.03	0.41
1:A:920:GLN:NE2	1:A:996:PHE:O	2.53	0.41
1:F:604:ARG:HD3	1:F:604:ARG:HA	1.94	0.41
1:A:661:ARG:NH1	1:A:720:LEU:O	2.54	0.40
1:A:357:PHE:HZ	1:A:802:LEU:HD11	1.86	0.40
1:F:828:ARG:O	1:F:832:LEU:HB2	2.21	0.40
1:A:703:VAL:HG21	1:A:729:VAL:HG13	2.03	0.40
4:E:145:LEU:HD21	4:E:225:LEU:HD21	2.03	0.40
1:F:202:ARG:O	1:F:206:LYS:HD2	2.21	0.40
1:F:884:ASP:HA	1:F:885:PRO:HD3	1.94	0.40
1:F:1147:LEU:HB3	1:F:1151:PHE:HA	2.02	0.40
2:C:17:DC:H1'	4:E:663:HIS:HD2	1.85	0.40
4:E:27:TRP:CE3	4:E:28:VAL:HG13	2.57	0.40
4:E:28:VAL:HG12	4:E:32:PHE:HD2	1.87	0.40
1:F:1119:ILE:HG22	1:F:1131:PHE:CE2	2.57	0.40
1:A:659:ASP:OD1	1:A:659:ASP:N	2.54	0.40
1:A:669:ARG:HH21	1:A:669:ARG:HG2	1.85	0.40
1:A:770:ASP:HB2	1:A:771:ILE:H	1.77	0.40

There are no symmetry-related clashes.

5.3 Torsion angles [i](#)

5.3.1 Protein backbone [i](#)

In the following table, the Percentiles column shows the percent Ramachandran outliers of the chain as a percentile score with respect to all PDB entries followed by that with respect to all EM entries.

The Analysed column shows the number of residues for which the backbone conformation was analysed, and the total number of residues.

Mol	Chain	Analysed	Favoured	Allowed	Outliers	Percentiles	
1	A	1140/1220 (93%)	1098 (96%)	40 (4%)	2 (0%)	47	68
1	F	1119/1220 (92%)	1087 (97%)	30 (3%)	2 (0%)	47	68
4	E	663/687 (96%)	642 (97%)	21 (3%)	0	100	100
All	All	2922/3127 (93%)	2827 (97%)	91 (3%)	4 (0%)	54	73

All (4) Ramachandran outliers are listed below:

Mol	Chain	Res	Type
1	A	1000	ASP
1	F	1000	ASP
1	A	999	PHE
1	F	999	PHE

5.3.2 Protein sidechains [i](#)

In the following table, the Percentiles column shows the percent sidechain outliers of the chain as a percentile score with respect to all PDB entries followed by that with respect to all EM entries.

The Analysed column shows the number of residues for which the sidechain conformation was analysed, and the total number of residues.

Mol	Chain	Analysed	Rotameric	Outliers	Percentiles	
1	A	1020/1082 (94%)	973 (95%)	47 (5%)	27	50
1	F	1004/1082 (93%)	971 (97%)	33 (3%)	38	64
4	E	597/615 (97%)	570 (96%)	27 (4%)	27	51
All	All	2621/2779 (94%)	2514 (96%)	107 (4%)	34	55

All (107) residues with a non-rotameric sidechain are listed below:

Mol	Chain	Res	Type
1	A	18	GLU
1	A	72	ARG
1	A	96	ASP
1	A	107	LYS
1	A	122	LEU
1	A	133	VAL

Continued on next page...

Continued from previous page...

Mol	Chain	Res	Type
1	A	158	ASN
1	A	177	ARG
1	A	197	ARG
1	A	206	LYS
1	A	208	LYS
1	A	218	SER
1	A	279	GLN
1	A	373	SER
1	A	397	GLU
1	A	403	THR
1	A	472	PHE
1	A	507	ASN
1	A	511	ARG
1	A	514	VAL
1	A	517	LYS
1	A	520	PHE
1	A	571	LEU
1	A	573	ARG
1	A	590	LYS
1	A	602	ASN
1	A	618	GLU
1	A	626	LEU
1	A	662	TYR
1	A	669	ARG
1	A	714	ASP
1	A	762	THR
1	A	763	TYR
1	A	787	ASP
1	A	796	CYS
1	A	913	ARG
1	A	927	MET
1	A	939	ASN
1	A	999	PHE
1	A	1004	TYR
1	A	1074	GLU
1	A	1075	GLU
1	A	1083	ARG
1	A	1087	ARG
1	A	1101	SER
1	A	1130	LYS
1	A	1137	LEU
4	E	39	TYR

Continued on next page...

Continued from previous page...

Mol	Chain	Res	Type
4	E	47	ARG
4	E	50	ARG
4	E	125	MET
4	E	130	ARG
4	E	131	PHE
4	E	144	LYS
4	E	171	GLN
4	E	196	LYS
4	E	234	GLN
4	E	251	VAL
4	E	255	GLU
4	E	290	LYS
4	E	293	TYR
4	E	322	LEU
4	E	327	GLU
4	E	328	HIS
4	E	330	ASP
4	E	356	LYS
4	E	383	LEU
4	E	386	ARG
4	E	400	LYS
4	E	459	THR
4	E	477	LYS
4	E	528	GLN
4	E	546	LYS
4	E	625	LYS
1	F	55	LYS
1	F	72	ARG
1	F	119	ARG
1	F	162	GLU
1	F	175	LEU
1	F	203	LEU
1	F	205	LYS
1	F	352	ARG
1	F	387	SER
1	F	472	PHE
1	F	507	ASN
1	F	508	GLN
1	F	511	ARG
1	F	514	VAL
1	F	517	LYS
1	F	550	THR

Continued on next page...

Continued from previous page...

Mol	Chain	Res	Type
1	F	571	LEU
1	F	573	ARG
1	F	590	LYS
1	F	602	ASN
1	F	607	PHE
1	F	623	HIS
1	F	663	MET
1	F	731	SER
1	F	740	LYS
1	F	741	ASN
1	F	931	LYS
1	F	939	ASN
1	F	999	PHE
1	F	1006	ASP
1	F	1095	GLN
1	F	1137	LEU
1	F	1145	ARG

Sometimes sidechains can be flipped to improve hydrogen bonding and reduce clashes. All (5) such sidechains are listed below:

Mol	Chain	Res	Type
1	A	70	GLN
1	A	836	HIS
1	F	70	GLN
1	F	781	GLN
1	F	940	GLN

5.3.3 RNA [i](#)

There are no RNA molecules in this entry.

5.4 Non-standard residues in protein, DNA, RNA chains [i](#)

There are no non-standard protein/DNA/RNA residues in this entry.

5.5 Carbohydrates [i](#)

There are no monosaccharides in this entry.

5.6 Ligand geometry

Of 1 ligands modelled in this entry, 1 is monoatomic - leaving 0 for Mogul analysis.

There are no bond length outliers.

There are no bond angle outliers.

There are no chirality outliers.

There are no torsion outliers.

There are no ring outliers.

No monomer is involved in short contacts.

5.7 Other polymers

There are no such residues in this entry.

5.8 Polymer linkage issues

There are no chain breaks in this entry.

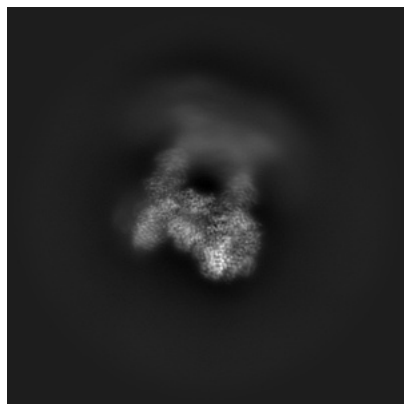
6 Map visualisation [i](#)

This section contains visualisations of the EMDB entry EMD-41865. These allow visual inspection of the internal detail of the map and identification of artifacts.

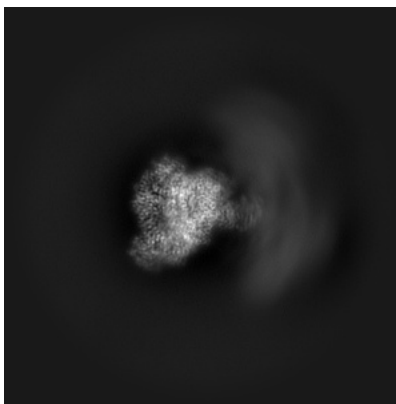
Images derived from a raw map, generated by summing the deposited half-maps, are presented below the corresponding image components of the primary map to allow further visual inspection and comparison with those of the primary map.

6.1 Orthogonal projections [i](#)

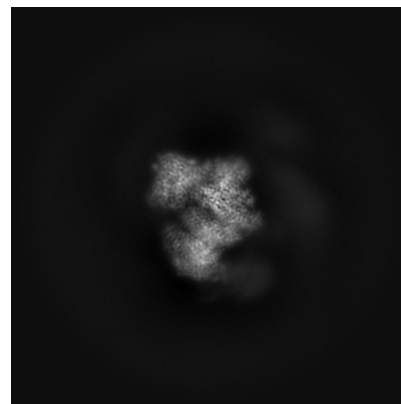
6.1.1 Primary map



X

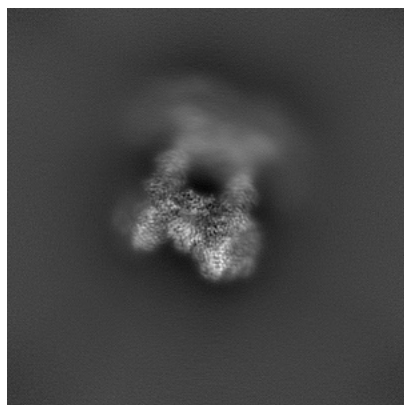


Y

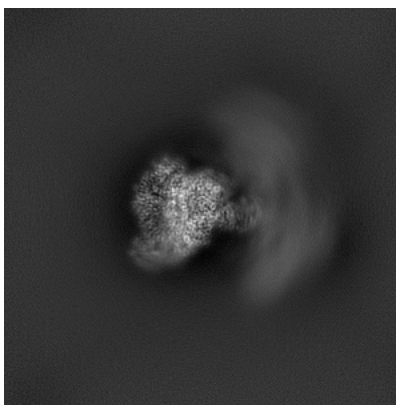


Z

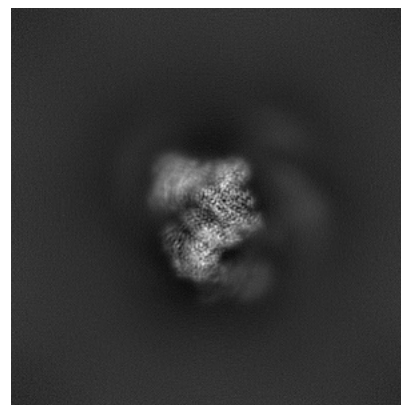
6.1.2 Raw map



X



Y

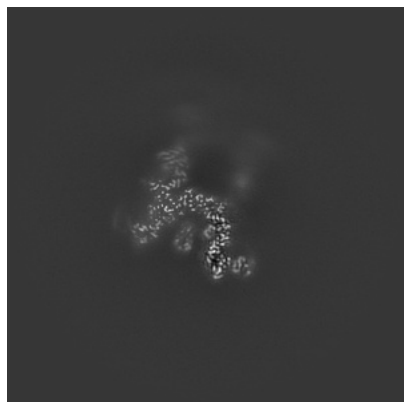


Z

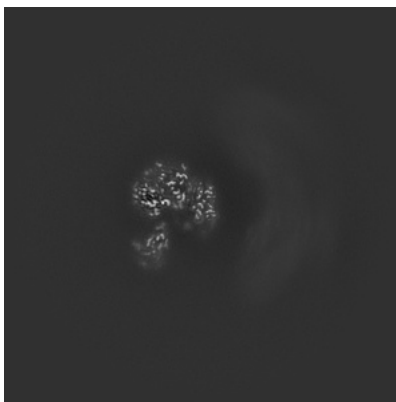
The images above show the map projected in three orthogonal directions.

6.2 Central slices [i](#)

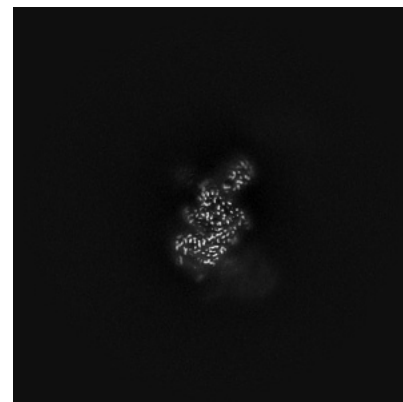
6.2.1 Primary map



X Index: 256

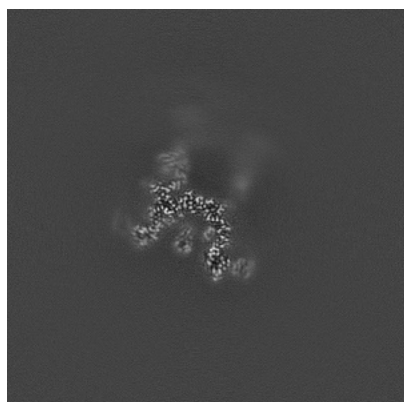


Y Index: 256

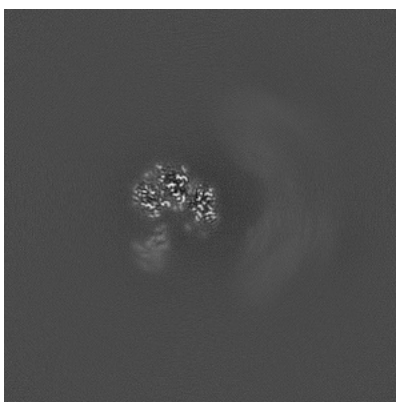


Z Index: 256

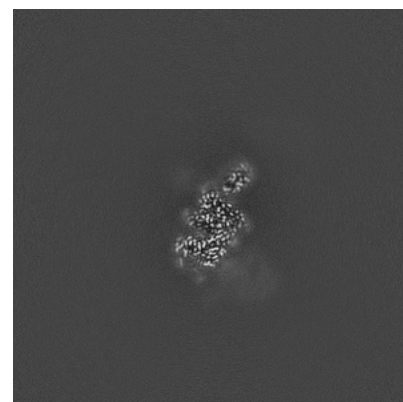
6.2.2 Raw map



X Index: 256



Y Index: 256

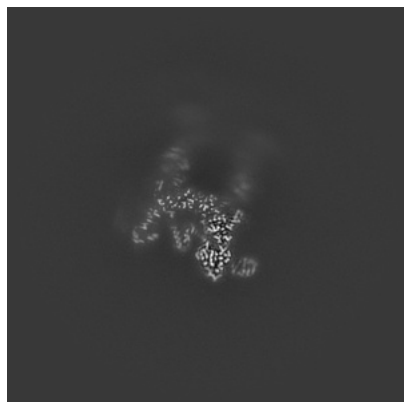


Z Index: 256

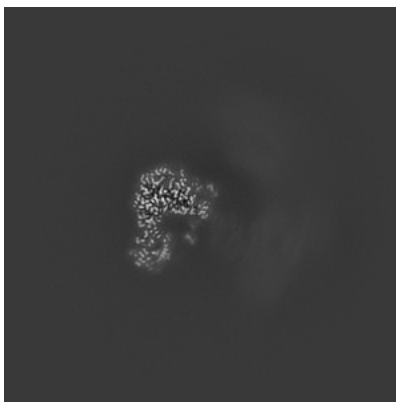
The images above show central slices of the map in three orthogonal directions.

6.3 Largest variance slices [i](#)

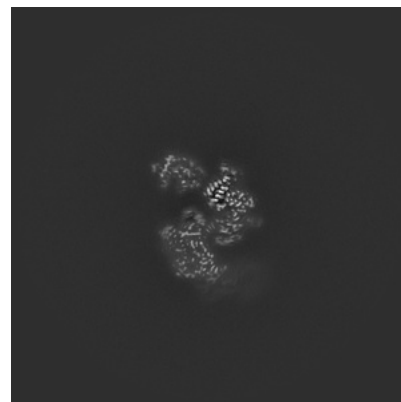
6.3.1 Primary map



X Index: 263

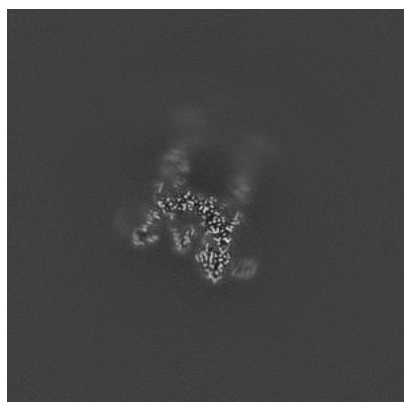


Y Index: 273

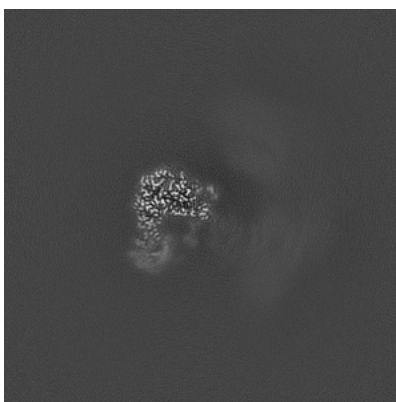


Z Index: 229

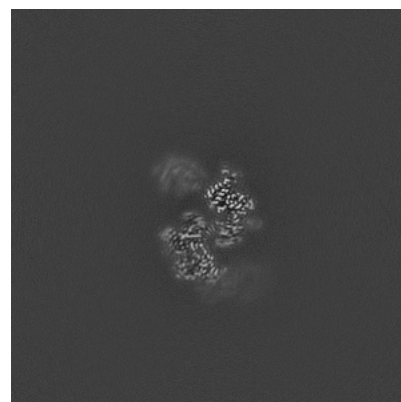
6.3.2 Raw map



X Index: 263



Y Index: 273

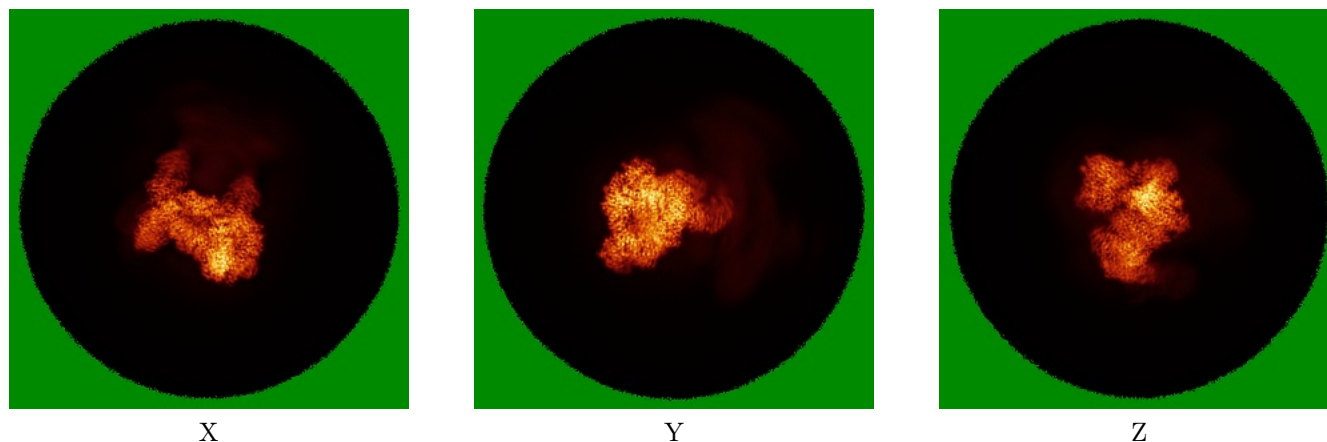


Z Index: 229

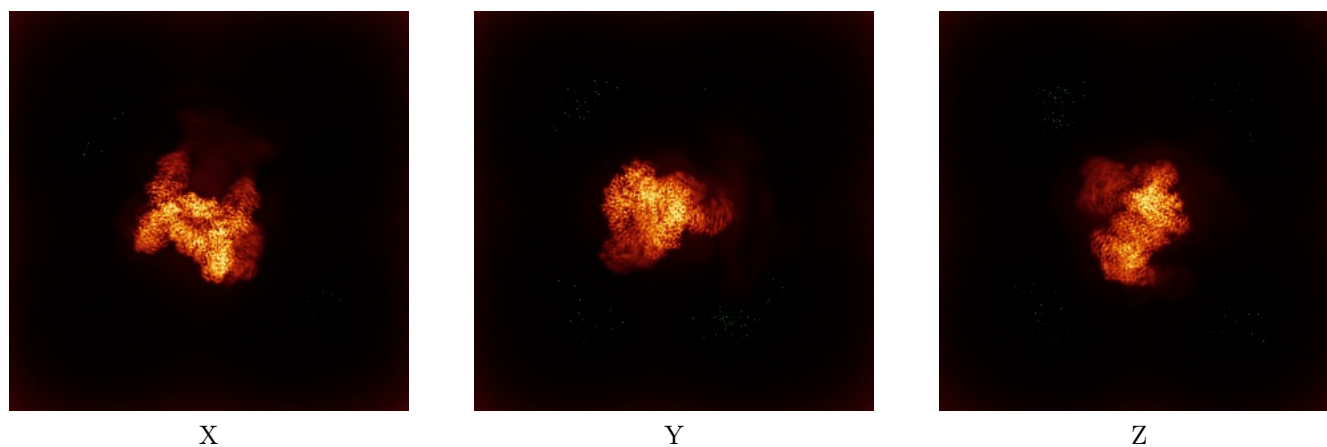
The images above show the largest variance slices of the map in three orthogonal directions.

6.4 Orthogonal standard-deviation projections (False-color) [i](#)

6.4.1 Primary map



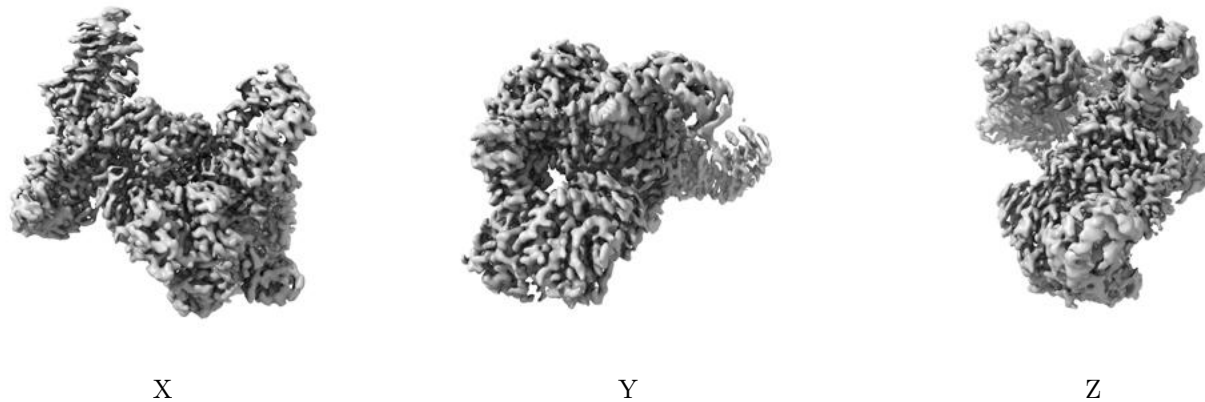
6.4.2 Raw map



The images above show the map standard deviation projections with false color in three orthogonal directions. Minimum values are shown in green, max in blue, and dark to light orange shades represent small to large values respectively.

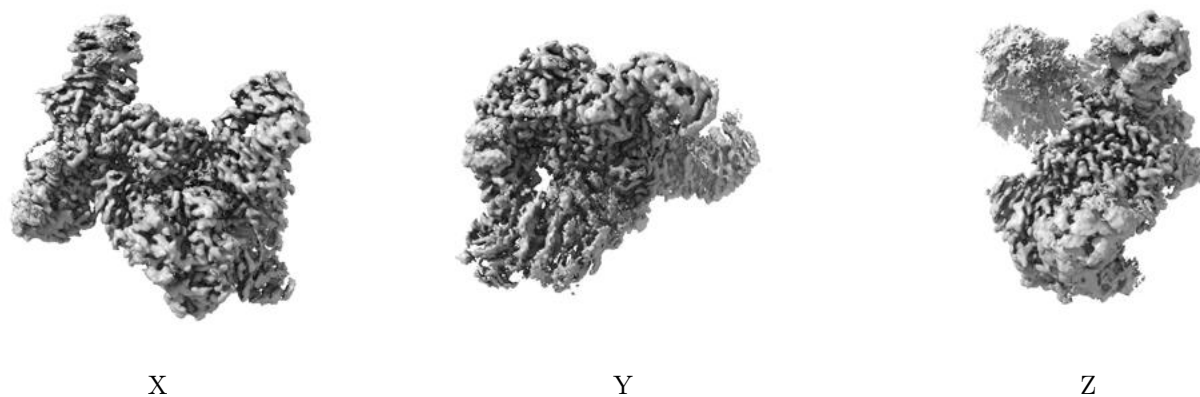
6.5 Orthogonal surface views [i](#)

6.5.1 Primary map



The images above show the 3D surface view of the map at the recommended contour level 0.1. These images, in conjunction with the slice images, may facilitate assessment of whether an appropriate contour level has been provided.

6.5.2 Raw map



These images show the 3D surface of the raw map. The raw map's contour level was selected so that its surface encloses the same volume as the primary map does at its recommended contour level.

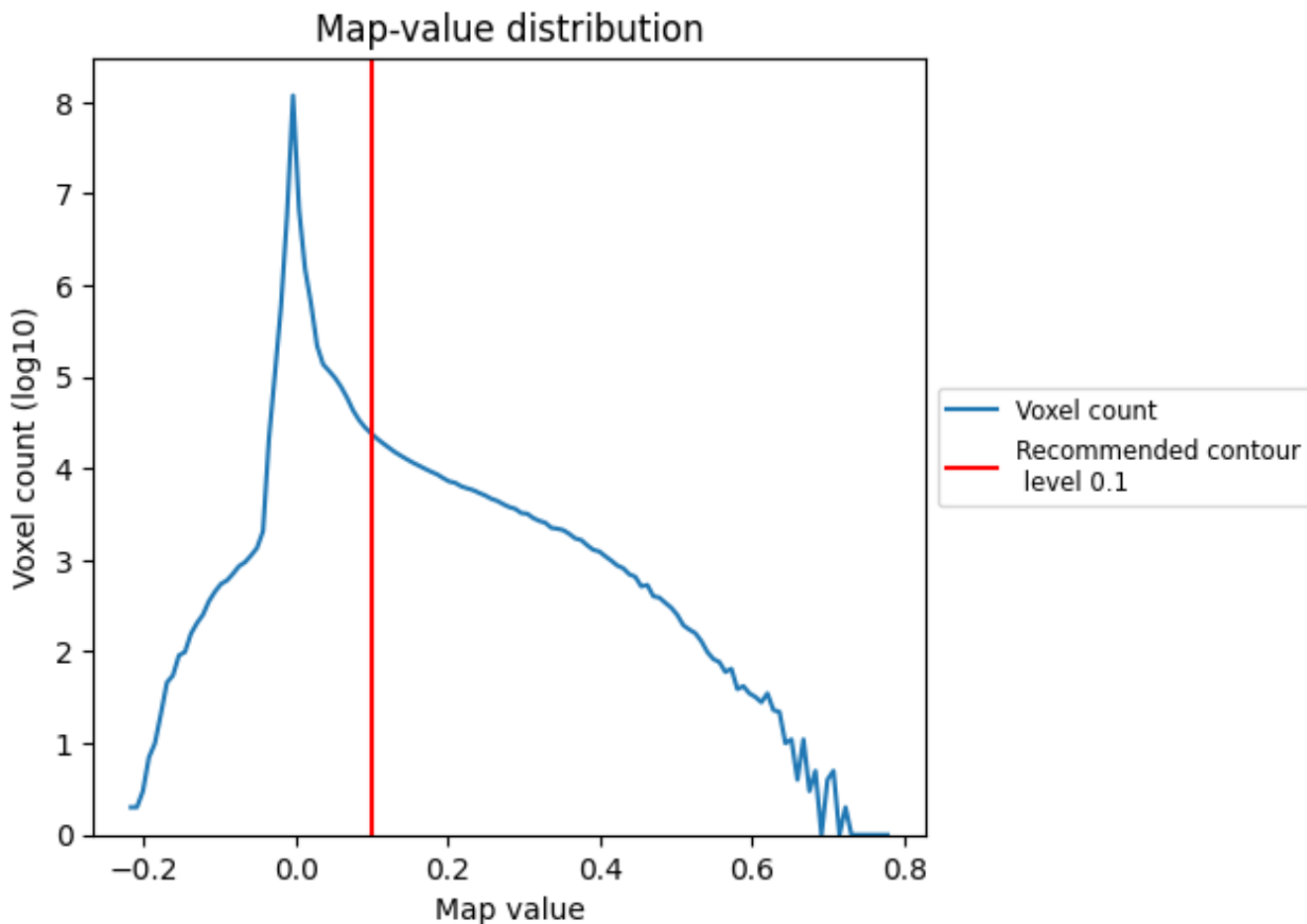
6.6 Mask visualisation [i](#)

This section was not generated. No masks/segmentation were deposited.

7 Map analysis [i](#)

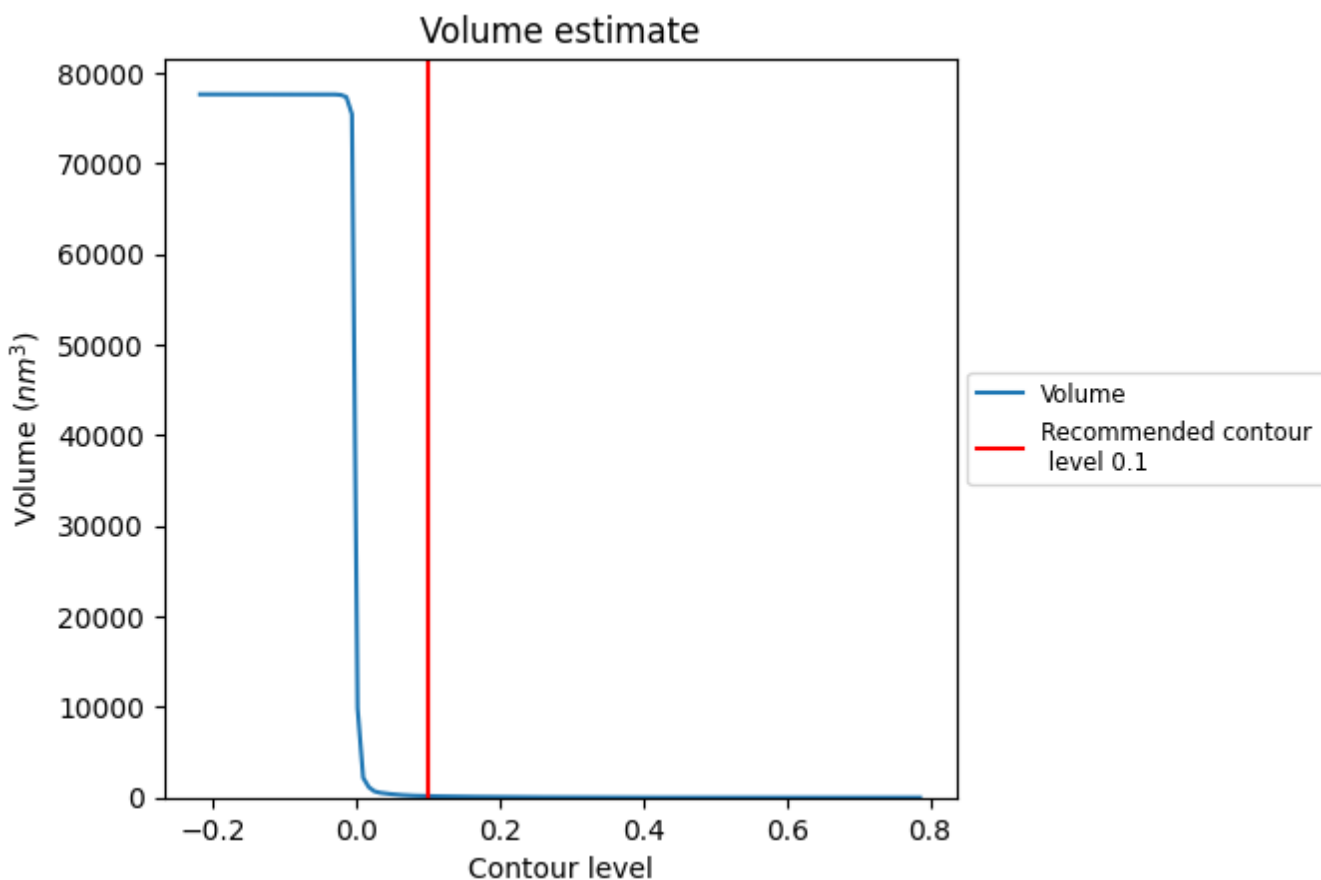
This section contains the results of statistical analysis of the map.

7.1 Map-value distribution [i](#)



The map-value distribution is plotted in 128 intervals along the x-axis. The y-axis is logarithmic. A spike in this graph at zero usually indicates that the volume has been masked.

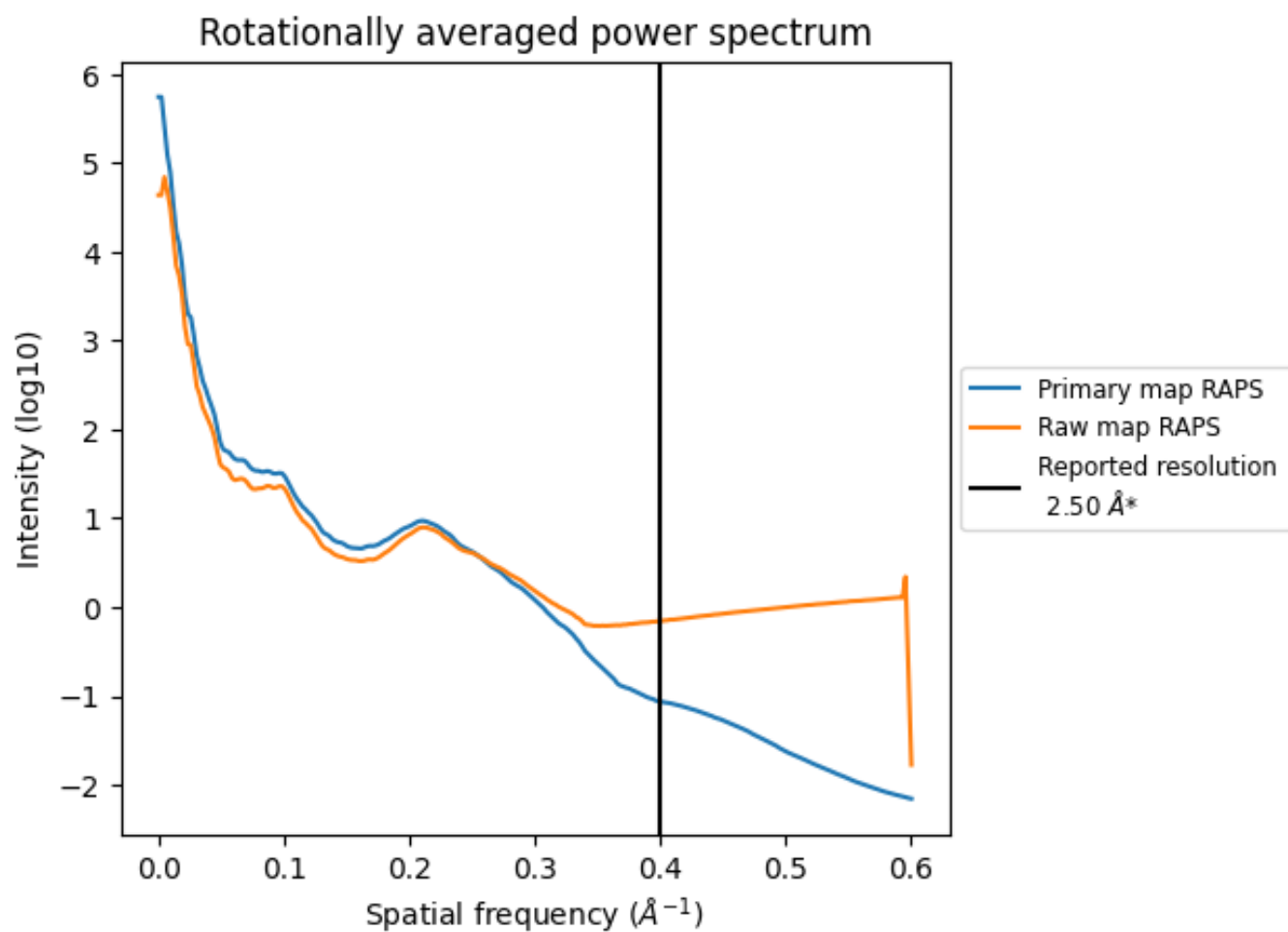
7.2 Volume estimate [\(i\)](#)



The volume at the recommended contour level is 161 nm³; this corresponds to an approximate mass of 146 kDa.

The volume estimate graph shows how the enclosed volume varies with the contour level. The recommended contour level is shown as a vertical line and the intersection between the line and the curve gives the volume of the enclosed surface at the given level.

7.3 Rotationally averaged power spectrum [i](#)

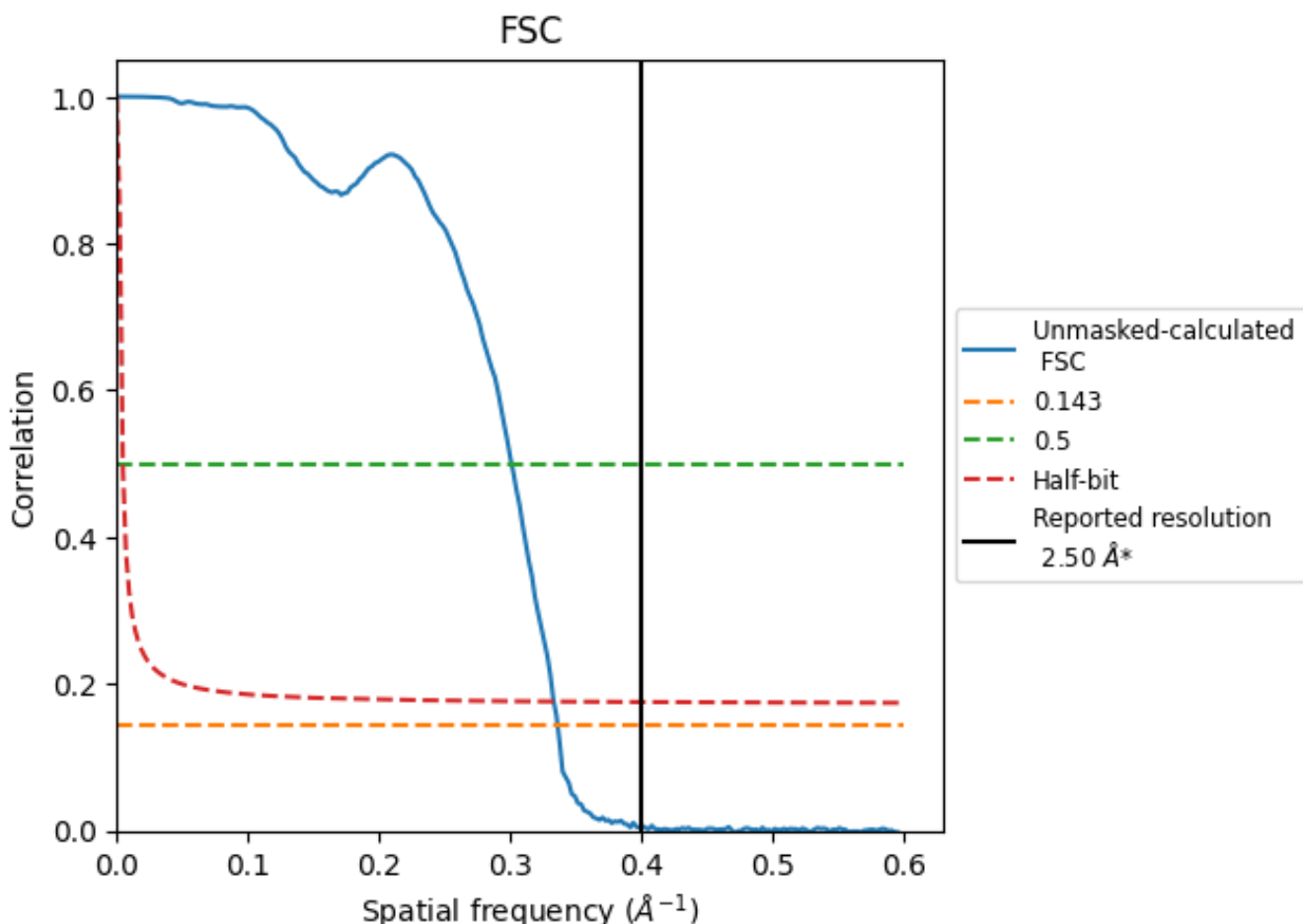


*Reported resolution corresponds to spatial frequency of 0.400 Å⁻¹

8 Fourier-Shell correlation [\(i\)](#)

Fourier-Shell Correlation (FSC) is the most commonly used method to estimate the resolution of single-particle and subtomogram-averaged maps. The shape of the curve depends on the imposed symmetry, mask and whether or not the two 3D reconstructions used were processed from a common reference. The reported resolution is shown as a black line. A curve is displayed for the half-bit criterion in addition to lines showing the 0.143 gold standard cut-off and 0.5 cut-off.

8.1 FSC [\(i\)](#)



*Reported resolution corresponds to spatial frequency of 0.400 \AA^{-1}

8.2 Resolution estimates [i](#)

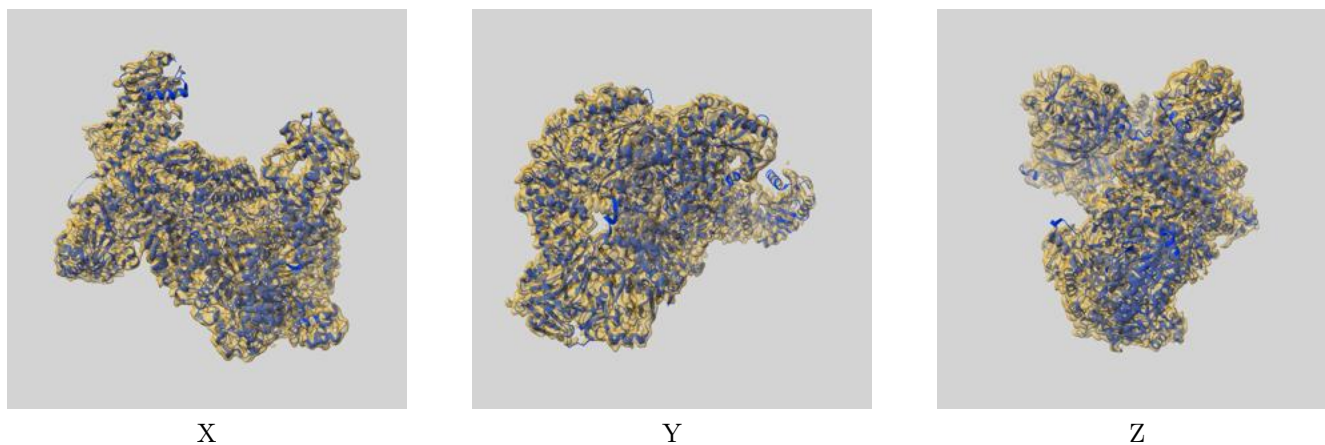
Resolution estimate (Å)	Estimation criterion (FSC cut-off)		
	0.143	0.5	Half-bit
Reported by author	2.50	-	-
Author-provided FSC curve	-	-	-
Unmasked-calculated*	2.98	3.32	3.00

*Resolution estimate based on FSC curve calculated by comparison of deposited half-maps. The value from deposited half-maps intersecting FSC 0.143 CUT-OFF 2.98 differs from the reported value 2.5 by more than 10 %

9 Map-model fit [i](#)

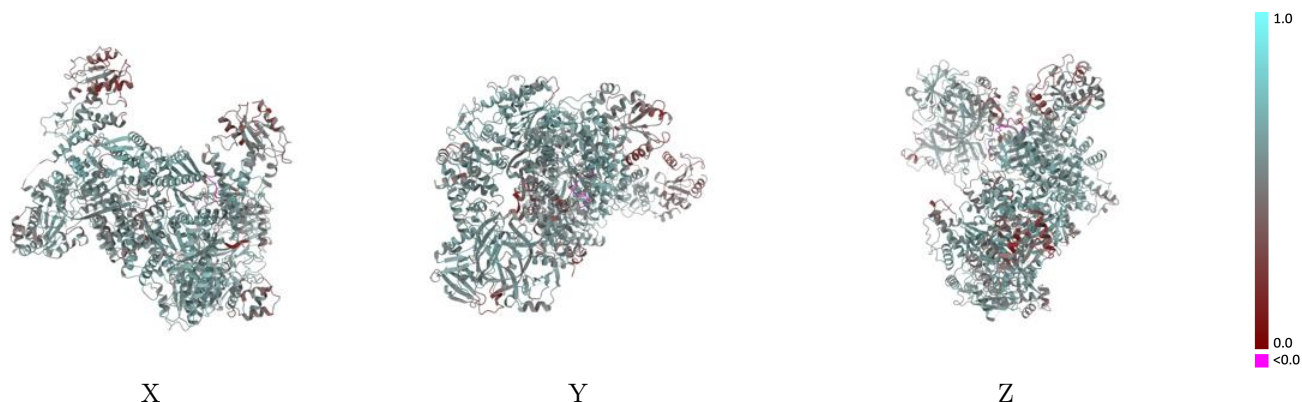
This section contains information regarding the fit between EMDB map EMD-41865 and PDB model 8U3K. Per-residue inclusion information can be found in section 3 on page 5.

9.1 Map-model overlay [i](#)



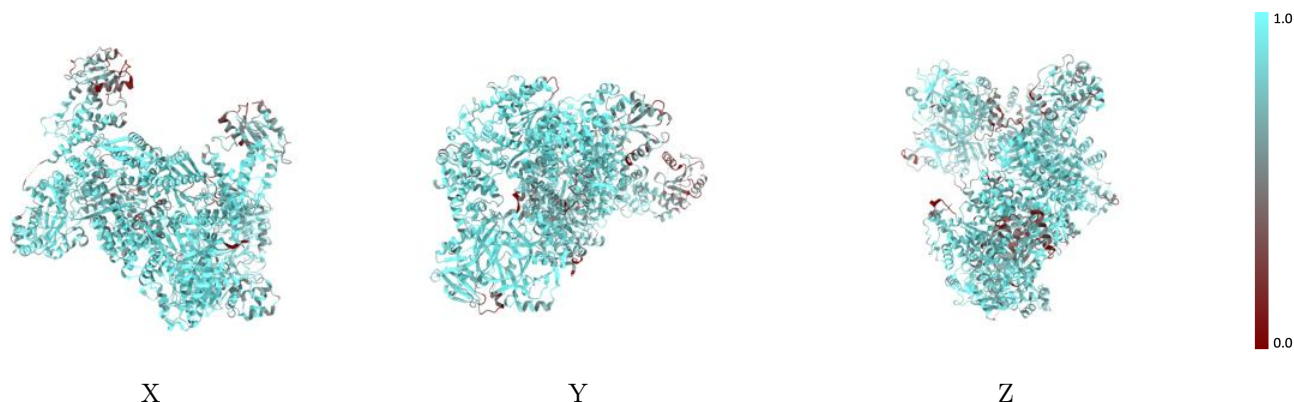
The images above show the 3D surface view of the map at the recommended contour level 0.1 at 50% transparency in yellow overlaid with a ribbon representation of the model coloured in blue. These images allow for the visual assessment of the quality of fit between the atomic model and the map.

9.2 Q-score mapped to coordinate model [i](#)



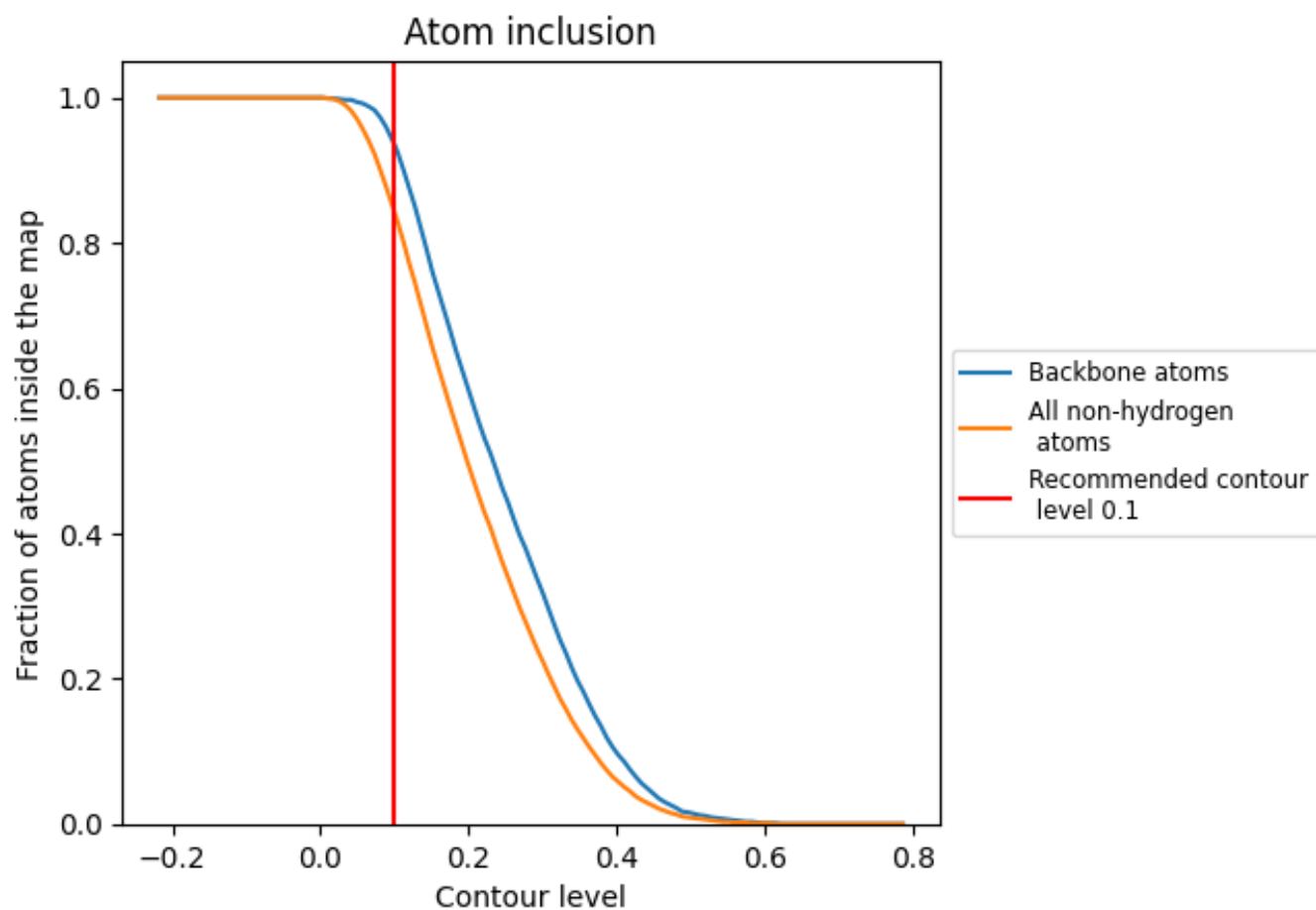
The images above show the model with each residue coloured according to its Q-score. This shows their resolvability in the map with higher Q-score values reflecting better resolvability. Please note: Q-score is calculating the resolvability of atoms, and thus high values are only expected at resolutions at which atoms can be resolved. Low Q-score values may therefore be expected for many entries.

9.3 Atom inclusion mapped to coordinate model [i](#)



The images above show the model with each residue coloured according to its atom inclusion. This shows to what extent they are inside the map at the recommended contour level (0.1).



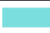











9.4 Atom inclusion [i](#)



At the recommended contour level, 94% of all backbone atoms, 84% of all non-hydrogen atoms, are inside the map.

9.5 Map-model fit summary [i](#)

The table lists the average atom inclusion at the recommended contour level (0.1) and Q-score for the entire model and for each chain.

Chain	Atom inclusion	Q-score
All	 0.8420	 0.5450
A	 0.8730	 0.5600
C	 0.8350	 0.5010
D	 0.9430	 0.5540
E	 0.8090	 0.5240
F	 0.8240	 0.5440
G	 0.9410	 0.5840

