



Full wwPDB EM Validation Report ⓘ

Aug 15, 2024 – 10:17 AM EDT

PDB ID : 8U4X
EMDB ID : EMD-41903
Title : Cryo-EM structure of PsBphP in Pr state
Authors : Basore, K.; Burgie, E.S.; Vierstra, D.
Deposited on : 2023-09-11
Resolution : 2.81 Å (reported)

This is a Full wwPDB EM Validation Report for a publicly released PDB entry.

We welcome your comments at validation@mail.wwpdb.org

A user guide is available at

<https://www.wwpdb.org/validation/2017/EMValidationReportHelp>

with specific help available everywhere you see the ⓘ symbol.

The types of validation reports are described at

<http://www.wwpdb.org/validation/2017/FAQs#types>.

The following versions of software and data (see [references ⓘ](#)) were used in the production of this report:

EMDB validation analysis : 0.0.1.dev92
Mogul : 1.8.5 (274361), CSD as541be (2020)
MolProbity : 4.02b-467
buster-report : 1.1.7 (2018)
Percentile statistics : 20191225.v01 (using entries in the PDB archive December 25th 2019)
MapQ : 1.9.13
Ideal geometry (proteins) : Engh & Huber (2001)
Ideal geometry (DNA, RNA) : Parkinson et al. (1996)
Validation Pipeline (wwPDB-VP) : 2.37.1

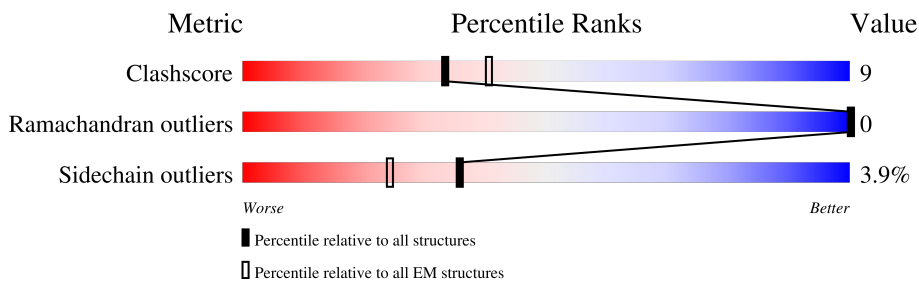
1 Overall quality at a glance i

The following experimental techniques were used to determine the structure:

ELECTRON MICROSCOPY

The reported resolution of this entry is 2.81 Å.

Percentile scores (ranging between 0-100) for global validation metrics of the entry are shown in the following graphic. The table shows the number of entries on which the scores are based.



Metric	Whole archive (#Entries)	EM structures (#Entries)
Clashscore	158937	4297
Ramachandran outliers	154571	4023
Sidechain outliers	154315	3826

The table below summarises the geometric issues observed across the polymeric chains and their fit to the map. The red, orange, yellow and green segments of the bar indicate the fraction of residues that contain outliers for ≥ 3 , 2, 1 and 0 types of geometric quality criteria respectively. A grey segment represents the fraction of residues that are not modelled. The numeric value for each fraction is indicated below the corresponding segment, with a dot representing fractions $\leq 5\%$. The upper red bar (where present) indicates the fraction of residues that have poor fit to the EM map (all-atom inclusion $< 40\%$). The numeric value is given above the bar.

Mol	Chain	Length	Quality of chain
1	A	746	
1	B	746	

2 Entry composition [i](#)

There are 2 unique types of molecules in this entry. The entry contains 7873 atoms, of which 0 are hydrogens and 0 are deuteriums.

In the tables below, the AltConf column contains the number of residues with at least one atom in alternate conformation and the Trace column contains the number of residues modelled with at most 2 atoms.

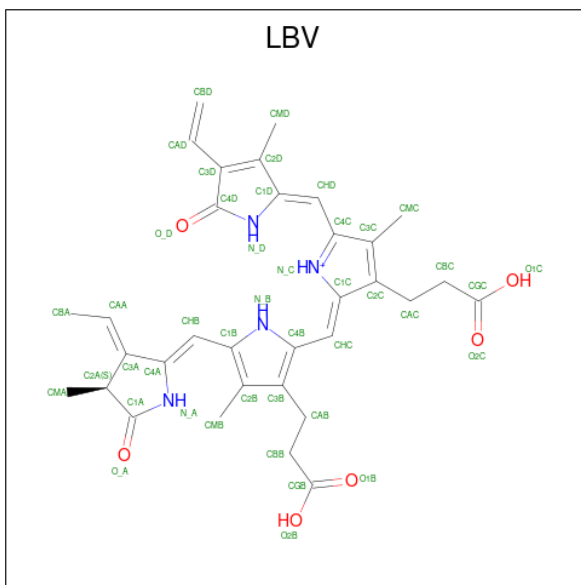
- Molecule 1 is a protein called histidine kinase.

Mol	Chain	Residues	Atoms					AltConf	Trace
			Total	C	N	O	S		
1	A	499	Total	C	N	O	S	0	0
			3890	2446	682	739	23		
1	B	500	Total	C	N	O	S	0	0
			3897	2451	683	740	23		

There are 2 discrepancies between the modelled and reference sequences:

Chain	Residue	Modelled	Actual	Comment	Reference
A	0	GLY	-	expression tag	UNP Q885D3
B	0	GLY	-	expression tag	UNP Q885D3

- Molecule 2 is 3-[2-[(Z)-[3-(2-carboxyethyl)-5-[(Z)-(4-ethenyl-3-methyl-5-oxidanylidene-pyrrol-2-ylidene)methyl]-4-methyl-pyrrol-1-ium -2-ylidene]methyl]-5-[(Z)-[(3E)-3-ethylidene-4-methyl-5-oxidanylidene-pyrrolidin-2-ylidene]methyl]-4-methyl-1H-pyrrol-3-yl]propanoic acid (three-letter code: LBV) (formula: C₃₃H₃₇N₄O₆) (labeled as "Ligand of Interest" by depositor).



Mol	Chain	Residues	Atoms				AltConf
2	A	1	Total 43	C 33	N 4	O 6	0
2	B	1	Total 43	C 33	N 4	O 6	0

S128	Y129	R132	M136	M139	L140	T151	L152	Y153	E154	V155	S156	V157	R158	E159	M163	Y166	D167	R168	Y169	L170	R173	V182	I183	A184	F194	L197	E206	Q207	A208	R209	W216	L217	R218	I219	I220	A223	R235	Q241	L244	L249	R250	S251				
V252	I255	L266	S267	M268	M269	S270	V271	S272	C285	Y292	V293	S294	H295	E296	L297	R298	Q302	Q306	I312	M315	Q323	R324	E325	T326	K327	I328	S341	D342	T343	D344	V345	F346	L349	A350	I351	Q352	L356	M357	D358	L359	V360	I367	I368	E369	D370	
H374	C379	P380	F381	P382	I385	R386	T390	S402	H403	Q416	T417	S420	M425	P428	V435	I436	W437	F438	E441	D451	D459	ALA	SER	ASP	ASN	THR	LEU	R466	W476	K477	V478	E479	M480	K486	G490	F493	L498	L503	E504	N505	D506					
L507	A508	R509	Q510	K513	Q516	ALA	VAL	ARG	GLU	LEU	ALA	ASP	GLN	LEU	THR	VAL	LEU	ALA	VAL	VAL	SER	GLY	ALA	HIS	ASP	LEU	ALA	SER	THR	PHE	SER	ASP	ARG	GLY	ILE	SER	THR	ALA	ILE	ALA	THR	ASN	THR	ALA	MET	
GLN	GLN	ALA	ALA	SER	ARG	MET	ASN	VAL	VAL	LEU	LEU	ARG	GLU	LEU	THR	VAL	LEU	ALA	VAL	VAL	SER	GLY	ALA	HIS	ASP	LEU	ALA	SER	THR	PHE	SER	ASP	ARG	GLY	ILE	SER	THR	ALA	ILE	ALA	THR	ASN	THR	ALA	MET	
GLU	PRO	ASP	ILE	PHE	GLU	ARG	ASN	ALA	ASP	PRO	THR	GLY	THR	ASN	LEU	ILE	ILE	GLY	GLY	TYR	ALA	ASN	GLY	ALA	ASP	LEU	ALA	SER	THR	PHE	VAL	VAL	LEU	VAL	ALA	ALA	THR	GLY	ILE	ALA	PRO	PRO	GLU	GLN	ALA	MET
LEU	PRO	HIS	ILE	PHE	GLU	ARG	ASN	ALA	ASP	PRO	THR	GLY	THR	ASN	LEU	ILE	ILE	GLY	GLY	TYR	ALA	ASN	GLY	ALA	ASP	LEU	ALA	SER	THR	PHE	VAL	VAL	LEU	VAL	ALA	ALA	THR	GLY	ILE	ALA	PRO	PRO	GLU	GLN	ALA	MET

4 Experimental information

Property	Value	Source
EM reconstruction method	SINGLE PARTICLE	Depositor
Imposed symmetry	POINT, C1	Depositor
Number of particles used	1666098	Depositor
Resolution determination method	FSC 0.143 CUT-OFF	Depositor
CTF correction method	PHASE FLIPPING AND AMPLITUDE CORRECTION	Depositor
Microscope	FEI TITAN KRIOS	Depositor
Voltage (kV)	300	Depositor
Electron dose ($e^-/\text{\AA}^2$)	51.78	Depositor
Minimum defocus (nm)	1000	Depositor
Maximum defocus (nm)	2400	Depositor
Magnification	96000	Depositor
Image detector	FEI FALCON IV (4k x 4k)	Depositor
Maximum map value	1.948	Depositor
Minimum map value	-0.002	Depositor
Average map value	0.001	Depositor
Map value standard deviation	0.020	Depositor
Recommended contour level	0.1	Depositor
Map size (Å)	262.8, 262.8, 262.8	wwPDB
Map dimensions	400, 400, 400	wwPDB
Map angles (°)	90.0, 90.0, 90.0	wwPDB
Pixel spacing (Å)	0.65699995, 0.65699995, 0.65699995	Depositor

5 Model quality [i](#)

5.1 Standard geometry [i](#)

Bond lengths and bond angles in the following residue types are not validated in this section: LBV

The Z score for a bond length (or angle) is the number of standard deviations the observed value is removed from the expected value. A bond length (or angle) with $|Z| > 5$ is considered an outlier worth inspection. RMSZ is the root-mean-square of all Z scores of the bond lengths (or angles).

Mol	Chain	Bond lengths		Bond angles	
		RMSZ	# Z >5	RMSZ	# Z >5
1	A	0.24	0/3969	0.48	0/5393
1	B	0.24	0/3976	0.48	0/5403
All	All	0.24	0/7945	0.48	0/10796

There are no bond length outliers.

There are no bond angle outliers.

There are no chirality outliers.

There are no planarity outliers.

5.2 Too-close contacts [i](#)

In the following table, the Non-H and H(model) columns list the number of non-hydrogen atoms and hydrogen atoms in the chain respectively. The H(added) column lists the number of hydrogen atoms added and optimized by MolProbity. The Clashes column lists the number of clashes within the asymmetric unit, whereas Symm-Clashes lists symmetry-related clashes.

Mol	Chain	Non-H	H(model)	H(added)	Clashes	Symm-Clashes
1	A	3890	0	3856	73	0
1	B	3897	0	3865	74	0
2	A	43	0	33	2	0
2	B	43	0	33	2	0
All	All	7873	0	7787	142	0

The all-atom clashscore is defined as the number of clashes found per 1000 atoms (including hydrogen atoms). The all-atom clashscore for this structure is 9.

All (142) close contacts within the same asymmetric unit are listed below, sorted by their clash magnitude.

Atom-1	Atom-2	Interatomic distance (Å)	Clash overlap (Å)
1:A:153:TYR:HB3	1:A:184:ALA:HB2	1.77	0.67
1:B:153:TYR:HB3	1:B:184:ALA:HB2	1.77	0.67
1:A:31:GLY:HA2	1:A:119:ILE:HG13	1.79	0.64
1:A:37:LYS:HG3	1:A:39:PRO:HD2	1.80	0.64
1:A:173:ARG:HH21	1:A:183:ILE:HD13	1.63	0.63
1:B:31:GLY:HA2	1:B:119:ILE:HG13	1.79	0.63
1:A:506:ASP:O	1:A:510:GLN:HG2	1.99	0.63
1:B:173:ARG:HH21	1:B:183:ILE:HD13	1.63	0.62
1:B:386:ARG:O	1:B:390:THR:HG23	1.99	0.62
1:A:505:ASN:O	1:A:509:ARG:HG3	1.99	0.62
1:B:505:ASN:O	1:B:509:ARG:HG3	1.99	0.62
1:B:506:ASP:O	1:B:510:GLN:HG2	2.00	0.62
1:B:37:LYS:HG3	1:B:39:PRO:HD2	1.80	0.62
1:A:386:ARG:O	1:A:390:THR:HG23	1.99	0.62
1:B:97:VAL:HG12	1:B:98:GLU:OE1	2.00	0.62
1:A:159:GLU:O	1:A:163:MET:HG2	2.01	0.61
1:B:159:GLU:O	1:B:163:MET:HG2	2.01	0.60
1:A:97:VAL:HG12	1:A:98:GLU:OE1	2.00	0.60
1:B:255:ILE:HD12	2:B:900:LBV:HAA1	1.84	0.60
1:B:350:ALA:HB2	1:B:367:ILE:HD13	1.83	0.60
1:A:98:GLU:OE1	1:A:98:GLU:N	2.35	0.59
1:A:255:ILE:HD12	2:A:900:LBV:HAA1	1.84	0.59
1:A:350:ALA:HB2	1:A:367:ILE:HD13	1.83	0.59
1:B:98:GLU:OE1	1:B:98:GLU:N	2.35	0.59
1:A:349:LEU:HD21	1:A:498:LEU:HD21	1.85	0.59
1:B:349:LEU:HD21	1:B:498:LEU:HD21	1.85	0.58
1:B:250:ARG:NH1	2:B:900:LBV:O2B	2.37	0.57
1:A:136:MET:HG2	1:B:136:MET:HG2	1.86	0.57
1:A:34:PHE:HB3	1:A:36:LEU:HD21	1.87	0.56
1:A:294:SER:HB3	1:A:297:LEU:HD12	1.87	0.56
1:A:139:MET:HG3	1:A:159:GLU:HG2	1.89	0.55
1:B:34:PHE:HB3	1:B:36:LEU:HD21	1.87	0.55
1:B:294:SER:HB3	1:B:297:LEU:HD12	1.87	0.55
1:A:218:ARG:NH2	1:A:272:SER:OG	2.38	0.55
1:B:139:MET:HG3	1:B:159:GLU:HG2	1.88	0.55
1:B:218:ARG:NH2	1:B:272:SER:OG	2.38	0.53
1:A:40:GLU:HB3	1:A:42:THR:HG23	1.91	0.53
1:B:40:GLU:HB3	1:B:42:THR:HG23	1.91	0.52
1:B:416:GLN:O	1:B:420:SER:OG	2.26	0.52
1:B:302:GLN:O	1:B:306:GLN:HG3	2.10	0.52
1:A:250:ARG:NH1	2:A:900:LBV:O2B	2.37	0.52
1:A:302:GLN:O	1:A:306:GLN:HG3	2.10	0.52

Continued on next page...

Continued from previous page...

Atom-1	Atom-2	Interatomic distance (Å)	Clash overlap (Å)
1:A:360:VAL:HG21	1:A:437:TRP:CG	2.45	0.51
1:A:153:TYR:O	1:A:157:VAL:HG13	2.11	0.51
1:B:136:MET:O	1:B:140:LEU:HD12	2.11	0.51
1:A:136:MET:O	1:A:140:LEU:HD12	2.11	0.50
1:B:360:VAL:HG21	1:B:437:TRP:CG	2.45	0.50
1:B:153:TYR:O	1:B:157:VAL:HG13	2.11	0.50
1:A:416:GLN:O	1:A:420:SER:OG	2.26	0.50
1:B:323:GLN:HB3	1:B:490:GLY:HA3	1.94	0.50
1:A:127:ILE:HG23	1:A:132:ARG:HD2	1.94	0.49
1:A:31:GLY:HA3	1:A:249:LEU:HD21	1.95	0.49
1:A:428:PRO:HG3	1:B:504:GLU:HG2	1.94	0.49
1:A:323:GLN:HB3	1:A:490:GLY:HA3	1.94	0.49
1:A:216:TRP:HA	1:A:272:SER:HB2	1.94	0.48
1:B:166:TYR:HD2	1:B:285:CYS:HB3	1.78	0.48
1:B:127:ILE:HG23	1:B:132:ARG:HD2	1.94	0.48
1:B:216:TRP:HA	1:B:272:SER:HB2	1.94	0.48
1:A:194:PHE:HD1	1:A:197:LEU:HD12	1.79	0.48
1:B:206:GLU:OE1	1:B:209:ARG:NH1	2.47	0.48
1:B:194:PHE:HD1	1:B:197:LEU:HD12	1.79	0.48
1:A:151:THR:O	1:A:155:VAL:HG13	2.14	0.48
1:A:478:VAL:HG12	1:A:480:MET:HG2	1.96	0.47
1:B:31:GLY:HA3	1:B:249:LEU:HD21	1.95	0.47
1:B:151:THR:O	1:B:155:VAL:HG13	2.14	0.47
1:B:478:VAL:HG12	1:B:480:MET:HG2	1.96	0.47
1:A:206:GLU:OE1	1:A:209:ARG:NH1	2.47	0.47
1:A:507:LEU:HD22	1:B:503:LEU:HD23	1.97	0.47
1:A:166:TYR:HD2	1:A:285:CYS:HB3	1.78	0.47
1:A:504:GLU:HG2	1:B:428:PRO:HG3	1.97	0.47
1:B:129:TYR:CD1	1:B:296:GLU:HB3	2.51	0.46
1:A:129:TYR:CD1	1:A:296:GLU:HB3	2.51	0.46
1:A:168:ARG:HD2	1:A:170:LEU:HD11	1.98	0.46
1:B:223:ALA:HB3	1:B:266:LEU:HD23	1.98	0.45
1:B:152:LEU:HA	1:B:152:LEU:HD12	1.79	0.45
1:A:223:ALA:HB3	1:A:266:LEU:HD23	1.98	0.45
1:B:158:ARG:HD2	1:B:158:ARG:HA	1.80	0.45
1:B:168:ARG:HD2	1:B:170:LEU:HD11	1.98	0.45
1:A:170:LEU:HD23	1:A:182:VAL:HG11	1.98	0.45
1:A:346:PHE:HB2	1:A:369:GLU:CD	2.37	0.45
1:B:110:GLN:OE1	1:B:235:ARG:NH1	2.50	0.45
1:B:173:ARG:NH2	1:B:183:ILE:HG21	2.32	0.45
1:B:346:PHE:HB2	1:B:369:GLU:CD	2.38	0.44

Continued on next page...

Continued from previous page...

Atom-1	Atom-2	Interatomic distance (Å)	Clash overlap (Å)
1:A:110:GLN:OE1	1:A:235:ARG:NH1	2.51	0.44
1:B:170:LEU:HD23	1:B:182:VAL:HG11	1.98	0.44
1:B:356:LEU:HG	1:B:437:TRP:HE1	1.83	0.44
1:A:24:PRO:HG3	1:A:250:ARG:HG3	2.00	0.44
1:B:24:PRO:HG3	1:B:250:ARG:HG3	2.00	0.44
1:B:217:LEU:HD21	1:B:298:ARG:HB3	2.00	0.44
1:A:167:ASP:OD1	1:A:167:ASP:N	2.51	0.44
1:B:167:ASP:N	1:B:167:ASP:OD1	2.51	0.44
1:B:382:PRO:HA	1:B:385:ILE:HD12	1.99	0.43
1:B:341:SER:OG	1:B:343:THR:OG1	2.33	0.43
1:B:509:ARG:HB3	1:B:509:ARG:CZ	2.49	0.43
1:A:382:PRO:HA	1:A:385:ILE:HD12	2.00	0.43
1:A:153:TYR:HE1	1:A:312:ILE:HD11	1.83	0.43
1:A:217:LEU:HD21	1:A:298:ARG:HB3	2.00	0.43
1:A:356:LEU:HG	1:A:437:TRP:HE1	1.83	0.43
1:A:220:ILE:HD13	1:A:252:VAL:HG21	2.01	0.43
1:A:53:VAL:HG12	1:A:54:LEU:HG	2.01	0.43
1:A:509:ARG:HB3	1:A:509:ARG:CZ	2.49	0.43
1:A:173:ARG:NH2	1:A:183:ILE:HG21	2.32	0.43
1:B:153:TYR:HE1	1:B:312:ILE:HD11	1.83	0.43
1:B:53:VAL:HG12	1:B:54:LEU:HG	2.01	0.42
1:A:221:PRO:O	1:A:267:SER:OG	2.33	0.42
1:A:503:LEU:HD23	1:B:507:LEU:HD22	2.01	0.42
1:B:118:GLU:OE2	1:B:292:TYR:OH	2.26	0.42
1:B:220:ILE:HD13	1:B:252:VAL:HG21	2.01	0.42
1:A:17:ALA:HA	1:A:207:GLN:HE21	1.84	0.41
1:A:41:LEU:HD13	1:A:66:LEU:HD12	2.02	0.41
1:A:244:LEU:O	1:A:250:ARG:HD3	2.20	0.41
1:A:323:GLN:HA	1:A:326:THR:HG22	2.02	0.41
1:A:324:ARG:HG2	1:A:493:PHE:CD2	2.55	0.41
1:A:420:SER:OG	1:A:441:GLU:HB2	2.20	0.41
1:B:17:ALA:HA	1:B:207:GLN:HE21	1.84	0.41
1:B:323:GLN:HA	1:B:326:THR:HG22	2.02	0.41
1:A:118:GLU:CD	1:A:298:ARG:HH22	2.24	0.41
1:A:367:ILE:HG12	1:A:435:VAL:HG22	2.02	0.41
1:A:374:HIS:N	1:A:374:HIS:ND1	2.68	0.41
1:B:374:HIS:ND1	1:B:374:HIS:N	2.68	0.41
1:B:244:LEU:O	1:B:250:ARG:HD3	2.20	0.41
1:A:100:VAL:HG13	1:A:102:PHE:CE1	2.55	0.41
1:B:100:VAL:HG13	1:B:102:PHE:CE1	2.55	0.41
1:B:118:GLU:CD	1:B:298:ARG:HH22	2.24	0.41

Continued on next page...

Continued from previous page...

Atom-1	Atom-2	Interatomic distance (Å)	Clash overlap (Å)
1:B:324:ARG:HG2	1:B:493:PHE:CD2	2.55	0.41
1:A:341:SER:OG	1:A:343:THR:OG1	2.33	0.41
1:B:324:ARG:O	1:B:328:ILE:HG13	2.21	0.41
1:B:420:SER:OG	1:B:441:GLU:HB2	2.20	0.41
1:A:102:PHE:HB3	1:A:117:LEU:HB3	2.03	0.41
1:B:385:ILE:HG23	1:B:438:PHE:HZ	1.86	0.41
1:A:166:TYR:HE2	1:A:269:MET:HB2	1.85	0.41
1:B:102:PHE:HB3	1:B:117:LEU:HB3	2.03	0.41
1:B:152:LEU:HD22	1:B:315:MET:CE	2.51	0.41
1:B:271:VAL:HG11	1:B:302:GLN:HA	2.03	0.41
1:A:470:ARG:H	1:A:470:ARG:HG2	1.71	0.41
1:B:367:ILE:HG12	1:B:435:VAL:HG22	2.02	0.41
1:A:267:SER:HB2	1:A:287:HIS:HB3	2.04	0.40
1:A:70:LEU:HD23	1:A:70:LEU:HA	1.90	0.40
1:A:102:PHE:CD2	1:A:117:LEU:HB3	2.57	0.40
1:A:386:ARG:HD3	1:A:386:ARG:HA	1.85	0.40
1:B:41:LEU:HD13	1:B:66:LEU:HD12	2.02	0.40
1:B:166:TYR:HE2	1:B:269:MET:HB2	1.85	0.40

There are no symmetry-related clashes.

5.3 Torsion angles [i](#)

5.3.1 Protein backbone [i](#)

In the following table, the Percentiles column shows the percent Ramachandran outliers of the chain as a percentile score with respect to all PDB entries followed by that with respect to all EM entries.

The Analysed column shows the number of residues for which the backbone conformation was analysed, and the total number of residues.

Mol	Chain	Analysed	Favoured	Allowed	Outliers	Percentiles	
1	A	495/746 (66%)	482 (97%)	13 (3%)	0	100	100
1	B	496/746 (66%)	482 (97%)	14 (3%)	0	100	100
All	All	991/1492 (66%)	964 (97%)	27 (3%)	0	100	100

There are no Ramachandran outliers to report.

5.3.2 Protein sidechains [i](#)

In the following table, the Percentiles column shows the percent sidechain outliers of the chain as a percentile score with respect to all PDB entries followed by that with respect to all EM entries.

The Analysed column shows the number of residues for which the sidechain conformation was analysed, and the total number of residues.

Mol	Chain	Analysed	Rotameric	Outliers	Percentiles	
1	A	426/633 (67%)	410 (96%)	16 (4%)	33	65
1	B	427/633 (68%)	410 (96%)	17 (4%)	31	64
All	All	853/1266 (67%)	820 (96%)	33 (4%)	36	64

All (33) residues with a non-rotameric sidechain are listed below:

Mol	Chain	Res	Type
1	A	35	THR
1	A	122	LYS
1	A	167	ASP
1	A	173	ARG
1	A	241	GLN
1	A	268	SER
1	A	351	GLN
1	A	374	HIS
1	A	379	CYS
1	A	402	SER
1	A	403	HIS
1	A	417	THR
1	A	425	MET
1	A	451	ASP
1	A	476	TRP
1	A	486	LYS
1	B	35	THR
1	B	122	LYS
1	B	163	MET
1	B	167	ASP
1	B	173	ARG
1	B	241	GLN
1	B	268	SER
1	B	351	GLN
1	B	374	HIS
1	B	379	CYS
1	B	402	SER

Continued on next page...

Continued from previous page...

Mol	Chain	Res	Type
1	B	403	HIS
1	B	417	THR
1	B	425	MET
1	B	451	ASP
1	B	476	TRP
1	B	486	LYS

Sometimes sidechains can be flipped to improve hydrogen bonding and reduce clashes. All (2) such sidechains are listed below:

Mol	Chain	Res	Type
1	A	306	GLN
1	B	306	GLN

5.3.3 RNA [i](#)

There are no RNA molecules in this entry.

5.4 Non-standard residues in protein, DNA, RNA chains [i](#)

There are no non-standard protein/DNA/RNA residues in this entry.

5.5 Carbohydrates [i](#)

There are no monosaccharides in this entry.

5.6 Ligand geometry [i](#)

2 ligands are modelled in this entry.

In the following table, the Counts columns list the number of bonds (or angles) for which Mogul statistics could be retrieved, the number of bonds (or angles) that are observed in the model and the number of bonds (or angles) that are defined in the Chemical Component Dictionary. The Link column lists molecule types, if any, to which the group is linked. The Z score for a bond length (or angle) is the number of standard deviations the observed value is removed from the expected value. A bond length (or angle) with $|Z| > 2$ is considered an outlier worth inspection. RMSZ is the root-mean-square of all Z scores of the bond lengths (or angles).

Mol	Type	Chain	Res	Link	Bond lengths			Bond angles		
					Counts	RMSZ	$\# Z > 2$	Counts	RMSZ	$\# Z > 2$
2	LBV	A	900	1	42,46,46	1.51	3 (7%)	47,67,67	1.10	5 (10%)

Mol	Type	Chain	Res	Link	Bond lengths			Bond angles		
					Counts	RMSZ	# Z > 2	Counts	RMSZ	# Z > 2
2	LBV	B	900	1	42,46,46	1.51	3 (7%)	47,67,67	1.10	5 (10%)

In the following table, the Chirals column lists the number of chiral outliers, the number of chiral centers analysed, the number of these observed in the model and the number defined in the Chemical Component Dictionary. Similar counts are reported in the Torsion and Rings columns. '-' means no outliers of that kind were identified.

Mol	Type	Chain	Res	Link	Chirals	Torsions	Rings
2	LBV	A	900	1	-	13/26/74/74	0/4/4/4
2	LBV	B	900	1	-	13/26/74/74	0/4/4/4

All (6) bond length outliers are listed below:

Mol	Chain	Res	Type	Atoms	Z	Observed(Å)	Ideal(Å)
2	A	900	LBV	CHC-C1C	6.68	1.40	1.35
2	B	900	LBV	CHC-C1C	6.63	1.40	1.35
2	B	900	LBV	C1C-C2C	-3.34	1.40	1.45
2	A	900	LBV	C1C-C2C	-3.28	1.40	1.45
2	A	900	LBV	C4C-C3C	-2.50	1.40	1.45
2	B	900	LBV	C4C-C3C	-2.47	1.40	1.45

All (10) bond angle outliers are listed below:

Mol	Chain	Res	Type	Atoms	Z	Observed(°)	Ideal(°)
2	B	900	LBV	C4B-CHC-C1C	2.46	131.75	128.81
2	A	900	LBV	C4B-CHC-C1C	2.41	131.69	128.81
2	A	900	LBV	CAA-C3A-C4A	-2.28	123.61	126.36
2	B	900	LBV	CAA-C3A-C4A	-2.27	123.61	126.36
2	A	900	LBV	O-A-C1A-C2A	2.10	128.31	126.28
2	B	900	LBV	O-A-C1A-C2A	2.07	128.28	126.28
2	A	900	LBV	CMC-C3C-C4C	2.05	128.22	125.06
2	B	900	LBV	CHC-C1C-N-C	-2.04	126.00	128.83
2	A	900	LBV	CHC-C1C-N-C	-2.02	126.02	128.83
2	B	900	LBV	CMC-C3C-C4C	2.01	128.16	125.06

There are no chirality outliers.

All (26) torsion outliers are listed below:

Mol	Chain	Res	Type	Atoms
2	A	900	LBV	C2A-C3A-CAA-CBA

Continued on next page...

Continued from previous page...

Mol	Chain	Res	Type	Atoms
2	A	900	LBV	C4A-C3A-CAA-CBA
2	A	900	LBV	C3B-C4B-CHC-C1C
2	A	900	LBV	B-N-C4B-CHC-C1C
2	A	900	LBV	C3C-C4C-CHD-C1D
2	A	900	LBV	C-N-C4C-CHD-C1D
2	B	900	LBV	C2A-C3A-CAA-CBA
2	B	900	LBV	C4A-C3A-CAA-CBA
2	B	900	LBV	C3B-C4B-CHC-C1C
2	B	900	LBV	B-N-C4B-CHC-C1C
2	B	900	LBV	C3C-C4C-CHD-C1D
2	B	900	LBV	C-N-C4C-CHD-C1D
2	A	900	LBV	C-N-C1C-CHC-C4B
2	B	900	LBV	C-N-C1C-CHC-C4B
2	A	900	LBV	D-N-C1D-CHD-C4C
2	B	900	LBV	D-N-C1D-CHD-C4C
2	A	900	LBV	C2C-C1C-CHC-C4B
2	B	900	LBV	C2C-C1C-CHC-C4B
2	A	900	LBV	A-N-C4A-CHB-C1B
2	B	900	LBV	A-N-C4A-CHB-C1B
2	A	900	LBV	C2D-C1D-CHD-C4C
2	B	900	LBV	C2D-C1D-CHD-C4C
2	A	900	LBV	CAC-CBC-CGC-O1C
2	A	900	LBV	CAC-CBC-CGC-O2C
2	B	900	LBV	CAC-CBC-CGC-O1C
2	B	900	LBV	CAC-CBC-CGC-O2C

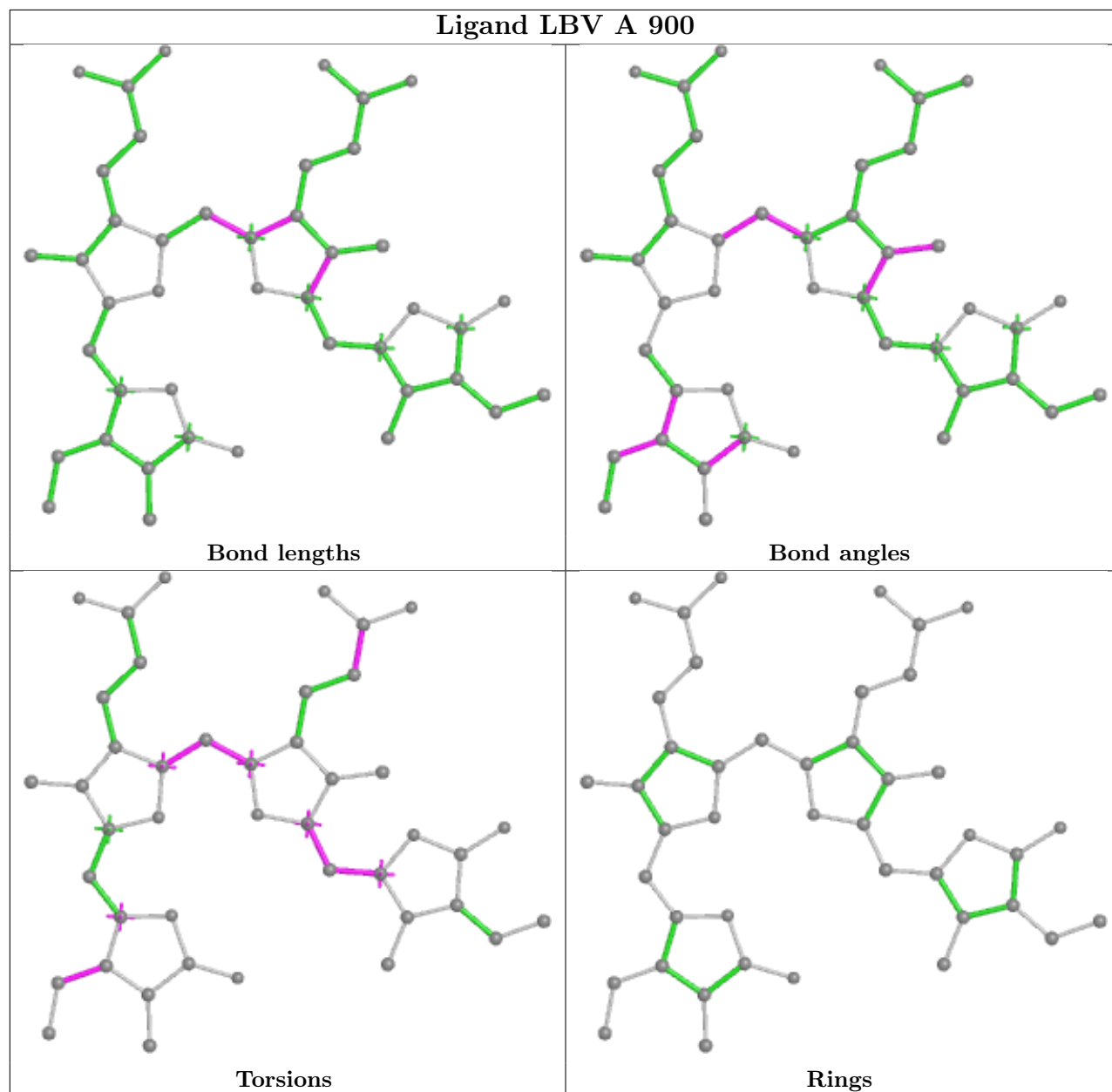
There are no ring outliers.

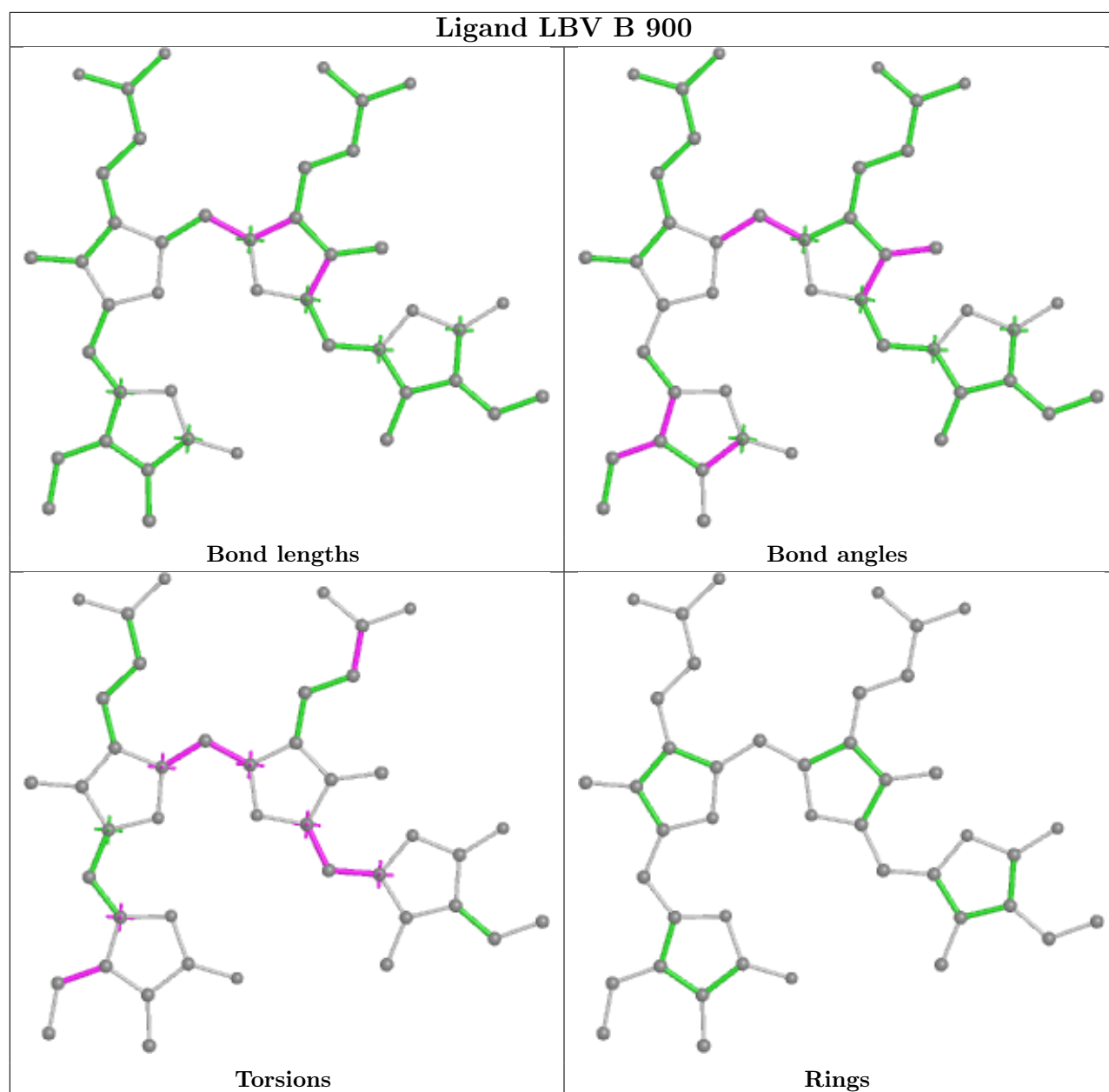
2 monomers are involved in 4 short contacts:

Mol	Chain	Res	Type	Clashes	Symm-Clashes
2	A	900	LBV	2	0
2	B	900	LBV	2	0

The following is a two-dimensional graphical depiction of Mogul quality analysis of bond lengths, bond angles, torsion angles, and ring geometry for all instances of the Ligand of Interest. In addition, ligands with molecular weight > 250 and outliers as shown on the validation Tables will also be included. For torsion angles, if less than 5% of the Mogul distribution of torsion angles is within 10 degrees of the torsion angle in question, then that torsion angle is considered an outlier. Any bond that is central to one or more torsion angles identified as an outlier by Mogul will be highlighted in the graph. For rings, the root-mean-square deviation (RMSD) between the ring in question and similar rings identified by Mogul is calculated over all ring torsion angles. If the average RMSD is greater than 60 degrees and the minimal RMSD between the ring in question and

any Mogul-identified rings is also greater than 60 degrees, then that ring is considered an outlier. The outliers are highlighted in purple. The color gray indicates Mogul did not find sufficient equivalents in the CSD to analyse the geometry.





5.7 Other polymers [i](#)

There are no such residues in this entry.

5.8 Polymer linkage issues [i](#)

There are no chain breaks in this entry.

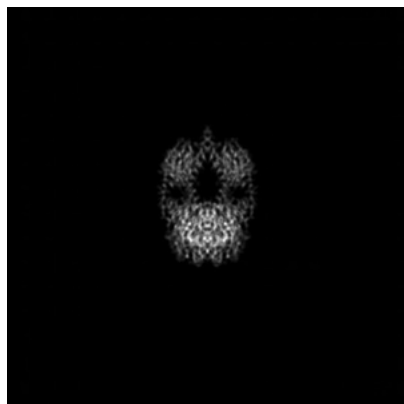
6 Map visualisation [i](#)

This section contains visualisations of the EMDB entry EMD-41903. These allow visual inspection of the internal detail of the map and identification of artifacts.

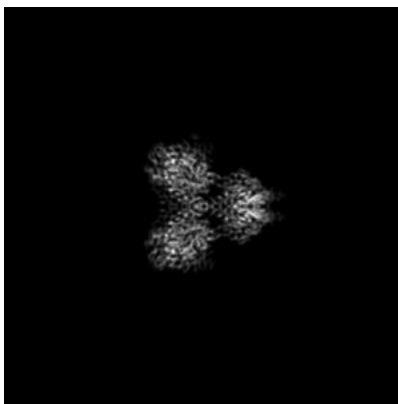
Images derived from a raw map, generated by summing the deposited half-maps, are presented below the corresponding image components of the primary map to allow further visual inspection and comparison with those of the primary map.

6.1 Orthogonal projections [i](#)

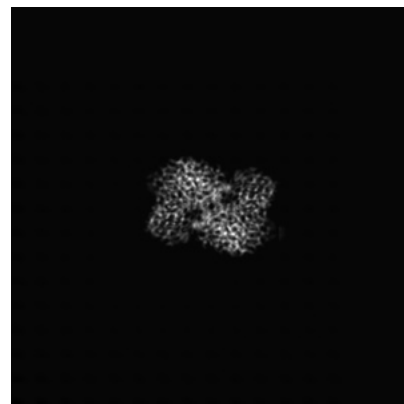
6.1.1 Primary map



X

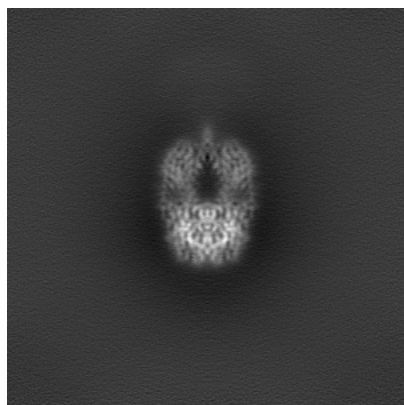


Y

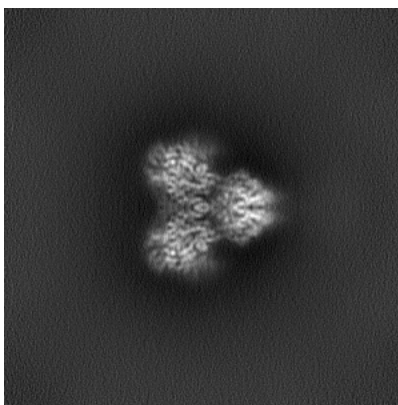


Z

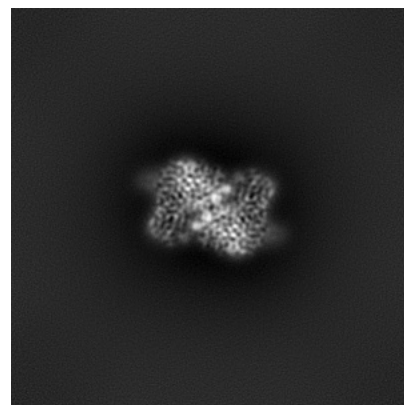
6.1.2 Raw map



X



Y



Z

The images above show the map projected in three orthogonal directions.

6.2 Central slices [i](#)

6.2.1 Primary map



X Index: 200

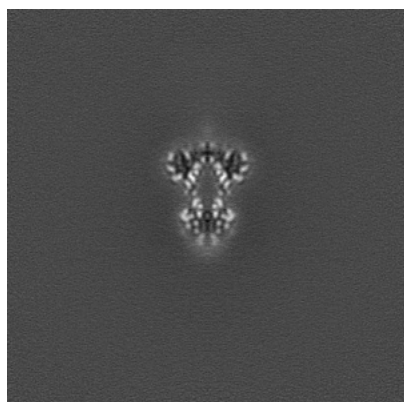


Y Index: 200

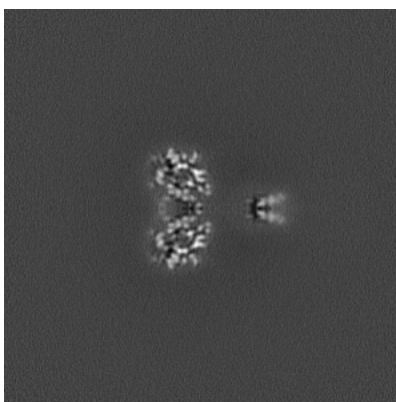


Z Index: 200

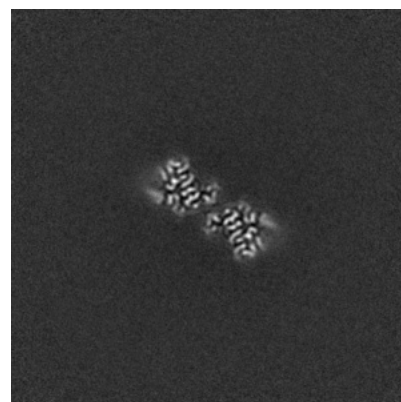
6.2.2 Raw map



X Index: 200



Y Index: 200



Z Index: 200

The images above show central slices of the map in three orthogonal directions.

6.3 Largest variance slices [i](#)

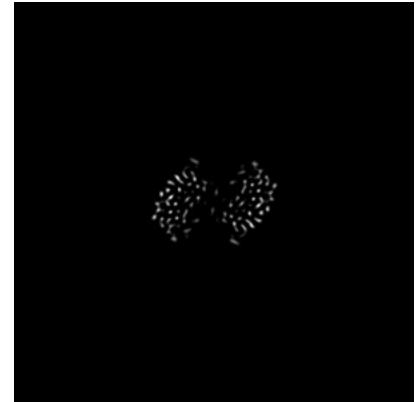
6.3.1 Primary map



X Index: 190

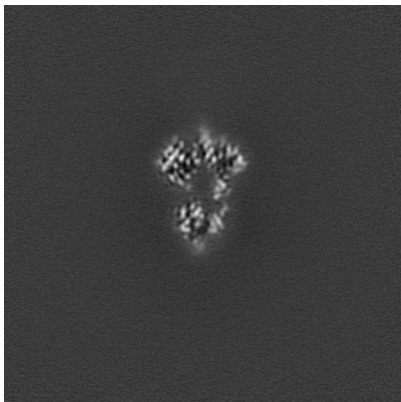


Y Index: 183

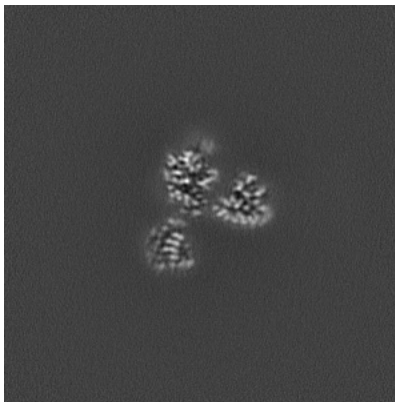


Z Index: 169

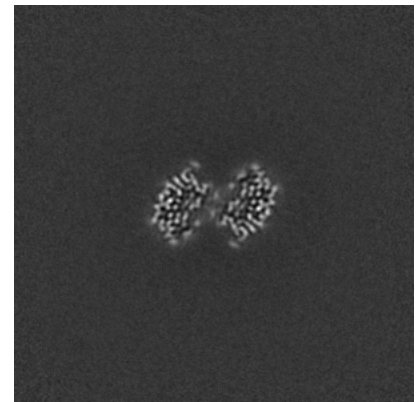
6.3.2 Raw map



X Index: 207



Y Index: 182

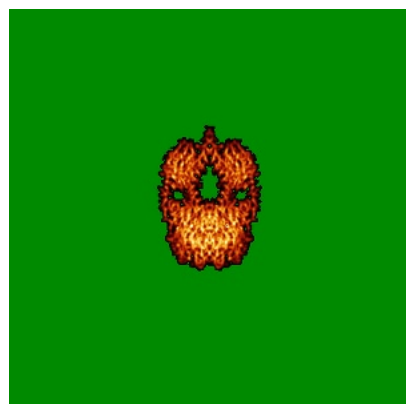


Z Index: 168

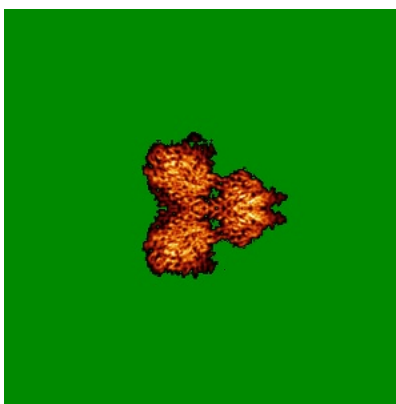
The images above show the largest variance slices of the map in three orthogonal directions.

6.4 Orthogonal standard-deviation projections (False-color) [i](#)

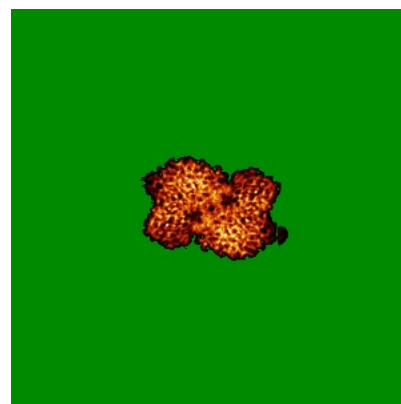
6.4.1 Primary map



X

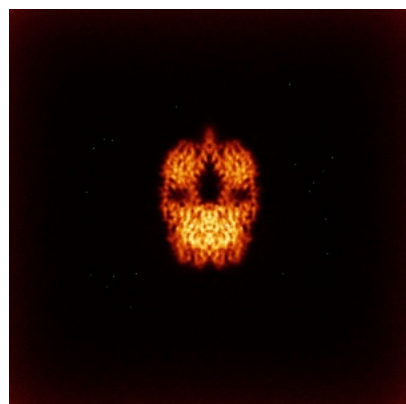


Y

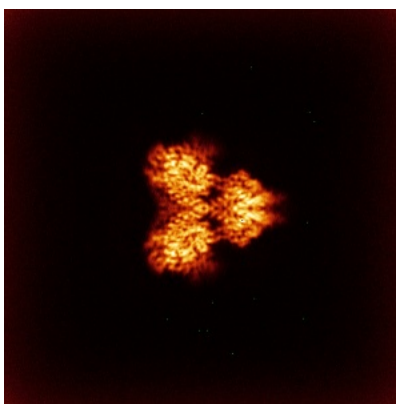


Z

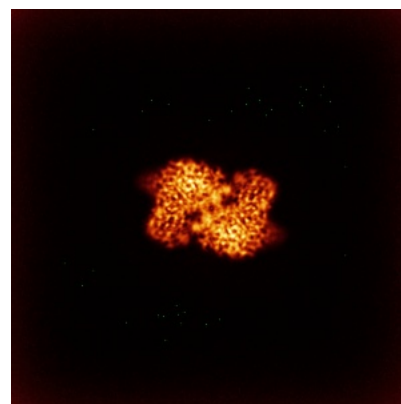
6.4.2 Raw map



X



Y

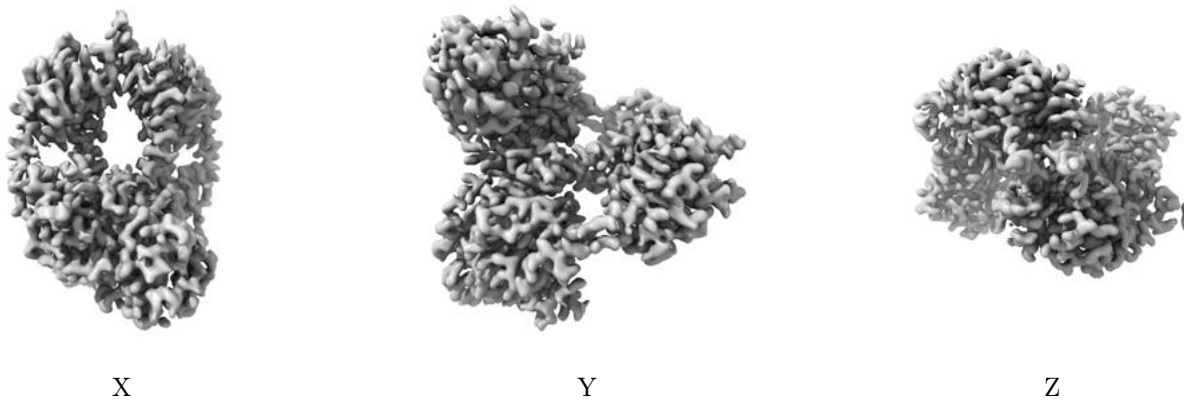


Z

The images above show the map standard deviation projections with false color in three orthogonal directions. Minimum values are shown in green, max in blue, and dark to light orange shades represent small to large values respectively.

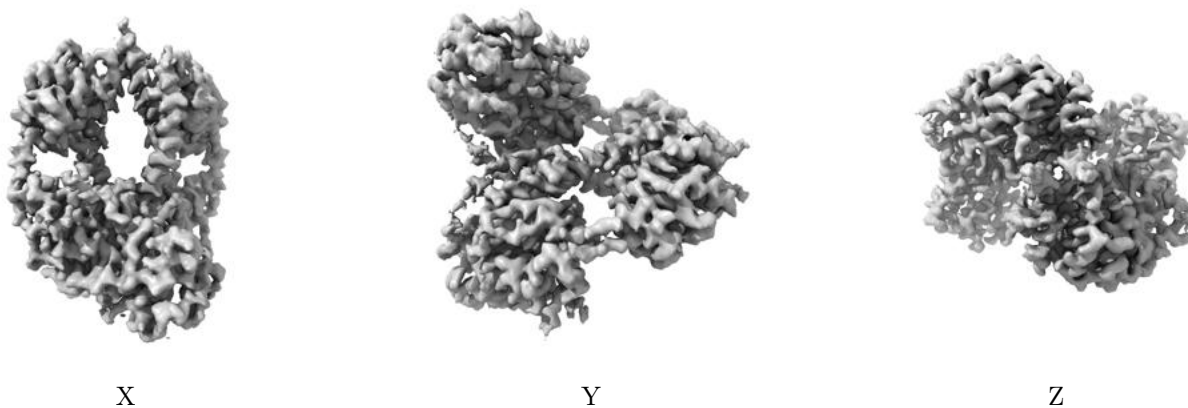
6.5 Orthogonal surface views [i](#)

6.5.1 Primary map



The images above show the 3D surface view of the map at the recommended contour level 0.1. These images, in conjunction with the slice images, may facilitate assessment of whether an appropriate contour level has been provided.

6.5.2 Raw map



These images show the 3D surface of the raw map. The raw map's contour level was selected so that its surface encloses the same volume as the primary map does at its recommended contour level.

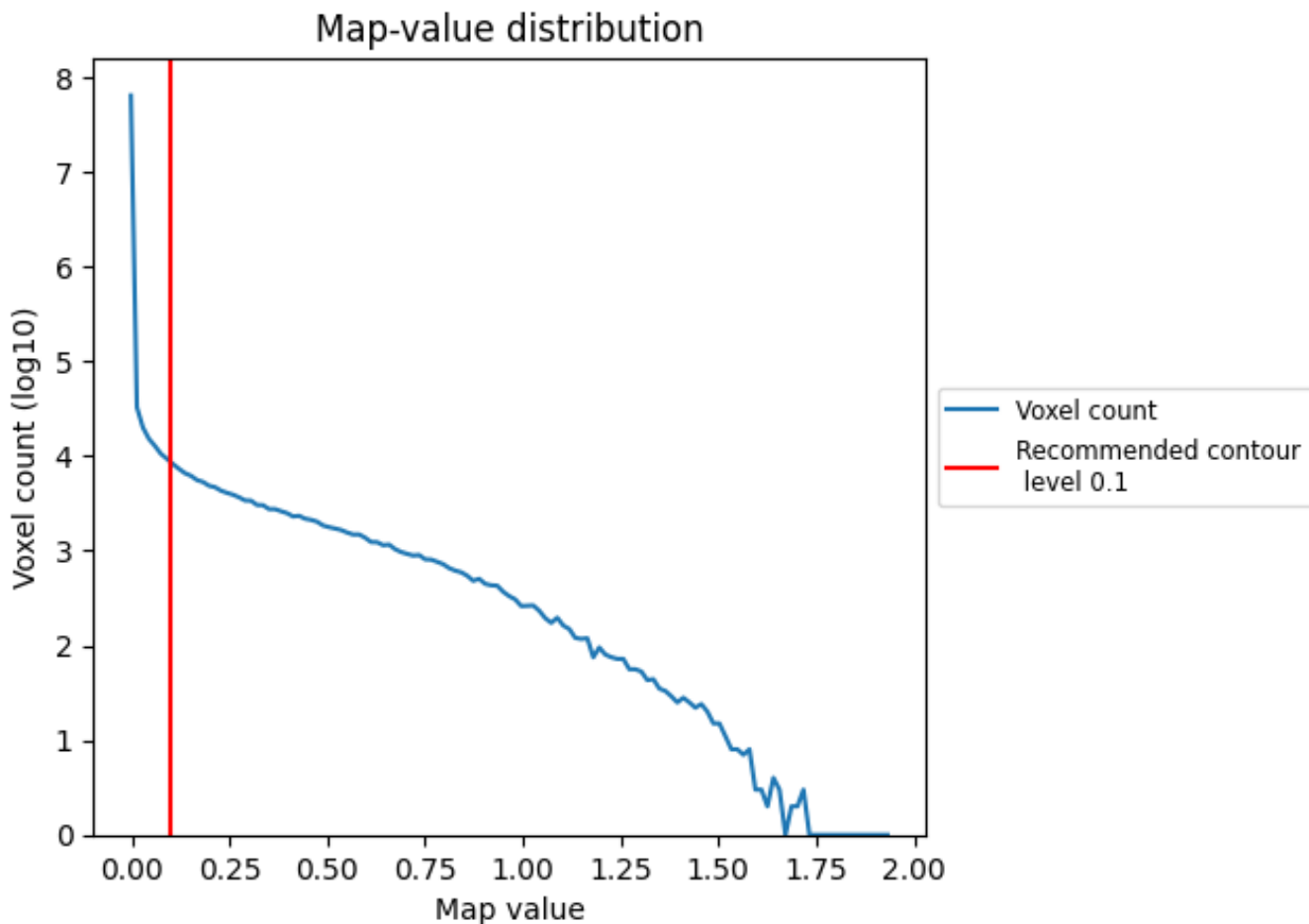
6.6 Mask visualisation [i](#)

This section was not generated. No masks/segmentation were deposited.

7 Map analysis [i](#)

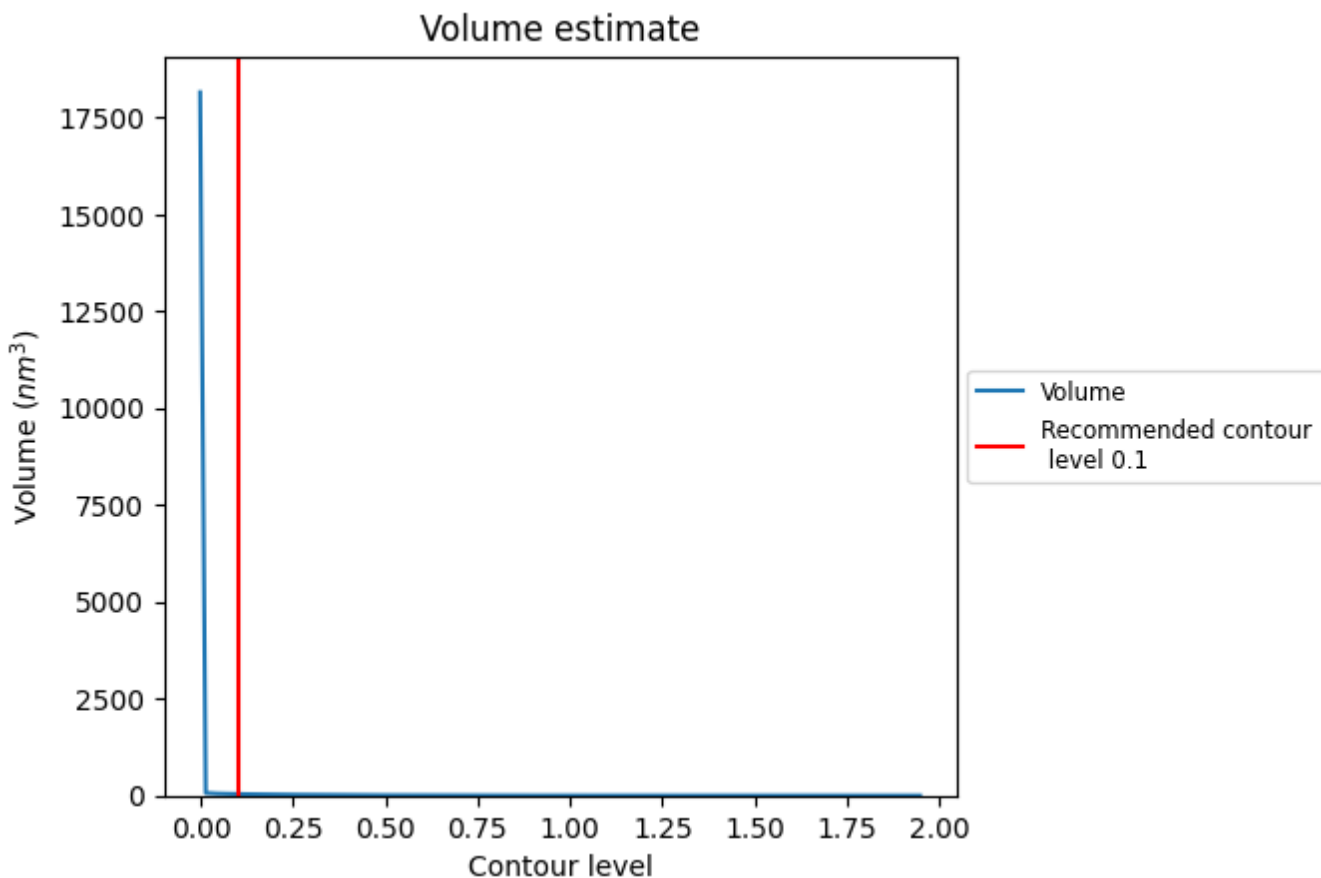
This section contains the results of statistical analysis of the map.

7.1 Map-value distribution [i](#)



The map-value distribution is plotted in 128 intervals along the x-axis. The y-axis is logarithmic. A spike in this graph at zero usually indicates that the volume has been masked.

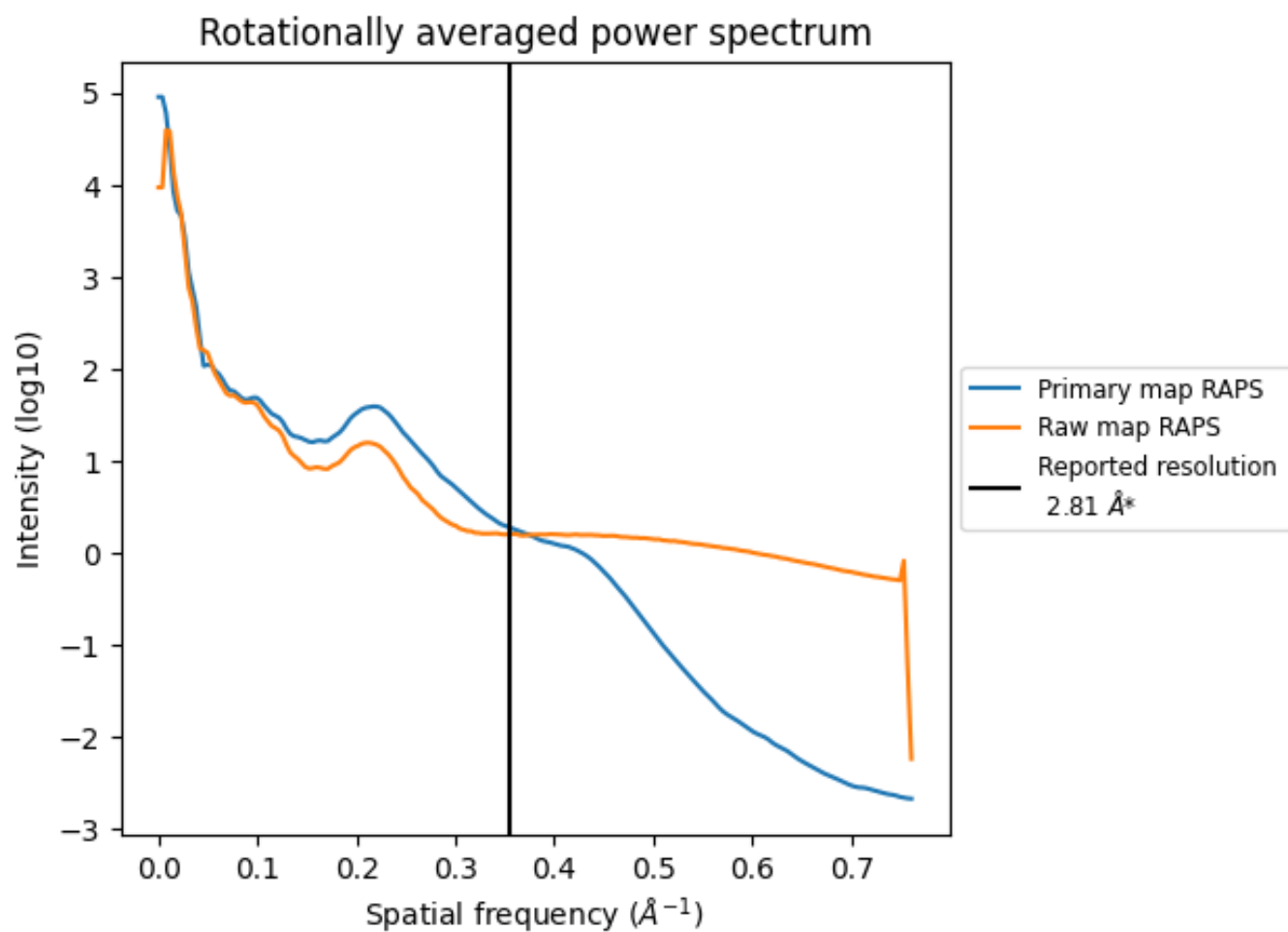
7.2 Volume estimate [i](#)



The volume at the recommended contour level is 39 nm^3 ; this corresponds to an approximate mass of 35 kDa.

The volume estimate graph shows how the enclosed volume varies with the contour level. The recommended contour level is shown as a vertical line and the intersection between the line and the curve gives the volume of the enclosed surface at the given level.

7.3 Rotationally averaged power spectrum i

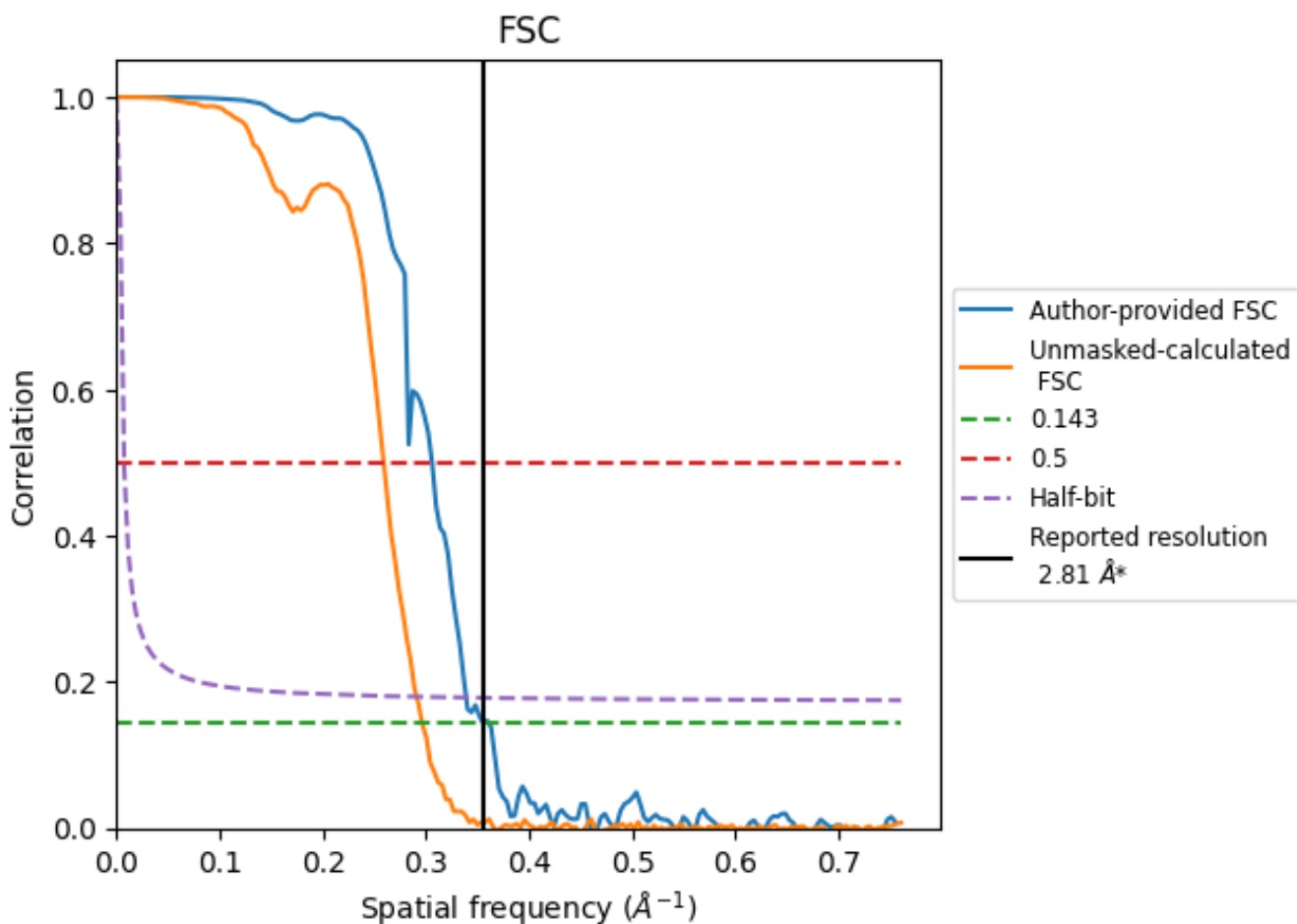


*Reported resolution corresponds to spatial frequency of 0.356 Å⁻¹

8 Fourier-Shell correlation [i](#)

Fourier-Shell Correlation (FSC) is the most commonly used method to estimate the resolution of single-particle and subtomogram-averaged maps. The shape of the curve depends on the imposed symmetry, mask and whether or not the two 3D reconstructions used were processed from a common reference. The reported resolution is shown as a black line. A curve is displayed for the half-bit criterion in addition to lines showing the 0.143 gold standard cut-off and 0.5 cut-off.

8.1 FSC [i](#)



*Reported resolution corresponds to spatial frequency of 0.356 Å⁻¹

8.2 Resolution estimates [i](#)

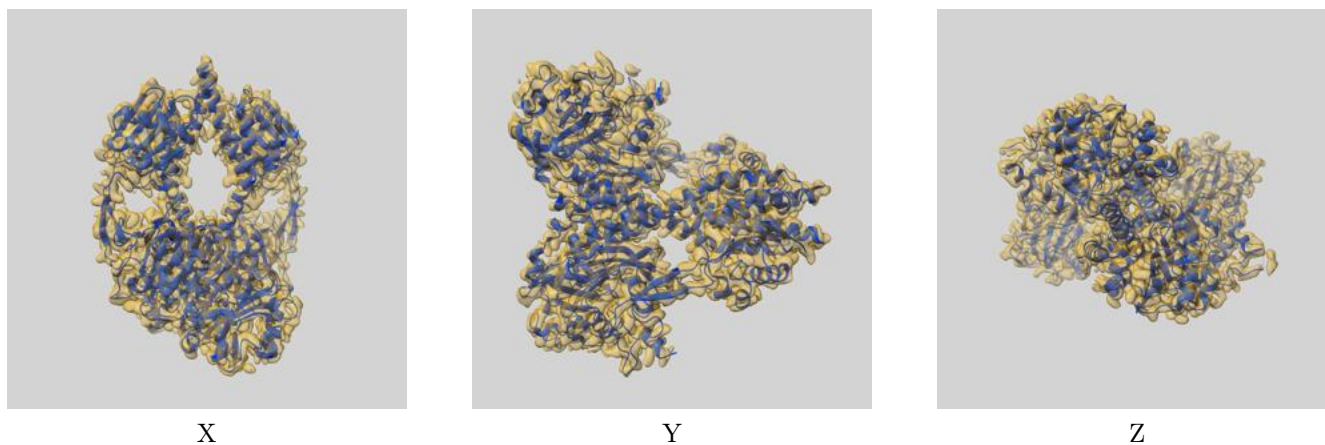
Resolution estimate (Å)	Estimation criterion (FSC cut-off)		
	0.143	0.5	Half-bit
Reported by author	2.81	-	-
Author-provided FSC curve	2.81	3.27	2.95
Unmasked-calculated*	3.37	3.86	3.43

*Resolution estimate based on FSC curve calculated by comparison of deposited half-maps. The value from deposited half-maps intersecting FSC 0.143 CUT-OFF 3.37 differs from the reported value 2.81 by more than 10 %

9 Map-model fit [i](#)

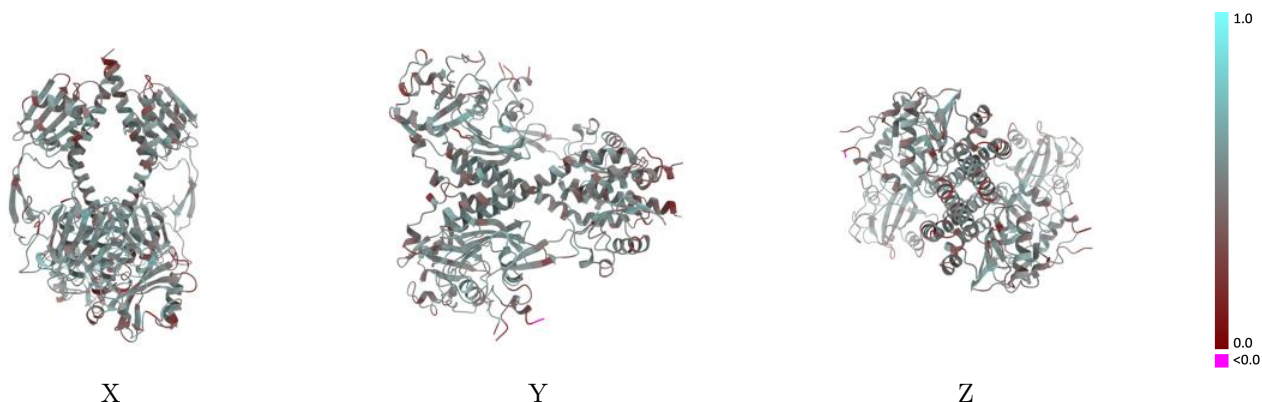
This section contains information regarding the fit between EMDB map EMD-41903 and PDB model 8U4X. Per-residue inclusion information can be found in section 3 on page 5.

9.1 Map-model overlay [i](#)



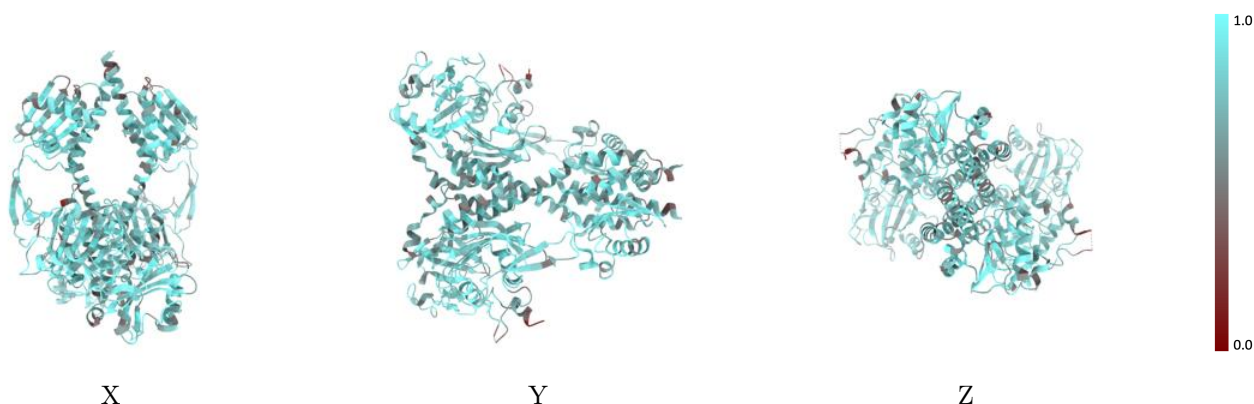
The images above show the 3D surface view of the map at the recommended contour level 0.1 at 50% transparency in yellow overlaid with a ribbon representation of the model coloured in blue. These images allow for the visual assessment of the quality of fit between the atomic model and the map.

9.2 Q-score mapped to coordinate model [i](#)



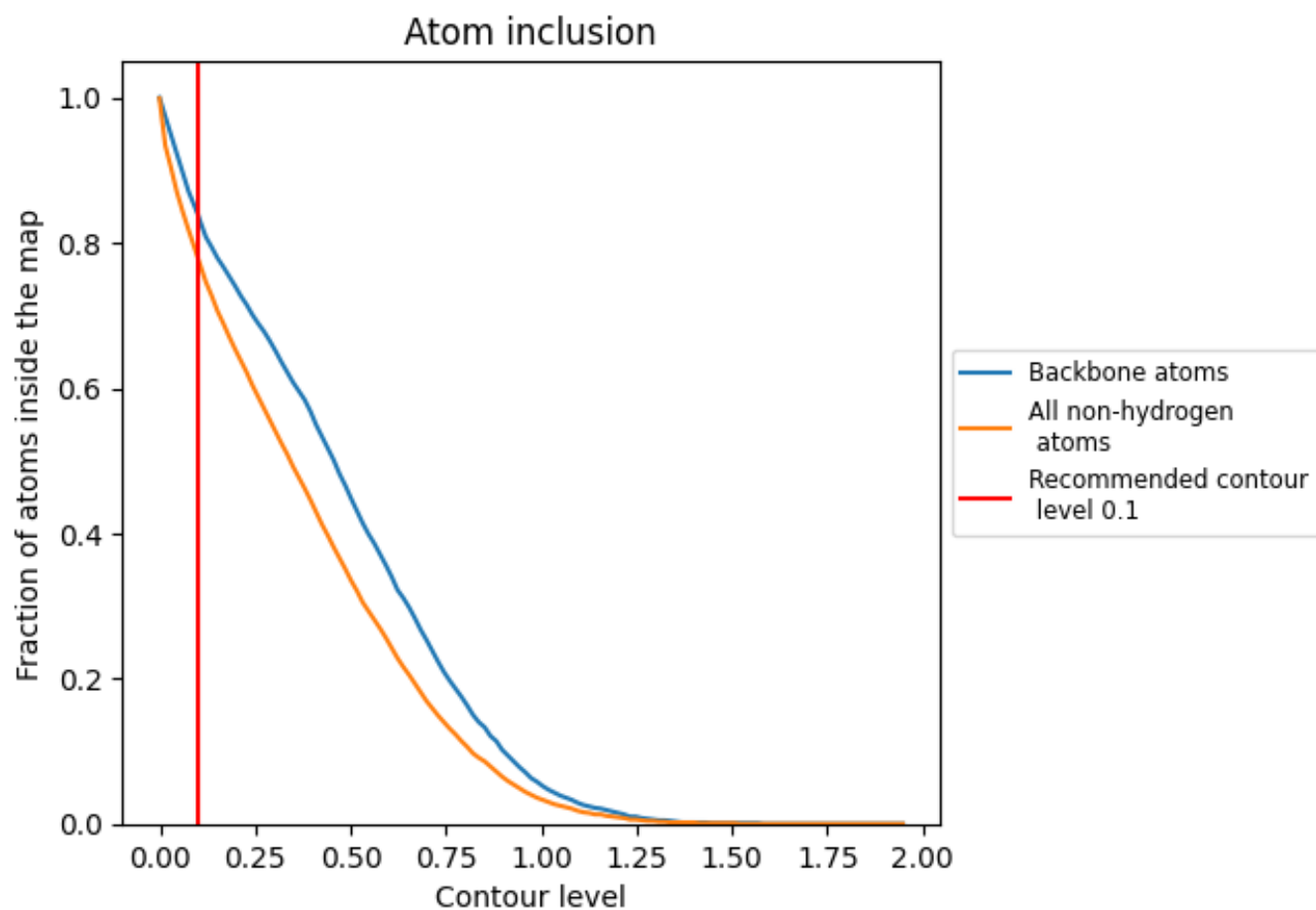
The images above show the model with each residue coloured according to its Q-score. This shows their resolvability in the map with higher Q-score values reflecting better resolvability. Please note: Q-score is calculating the resolvability of atoms, and thus high values are only expected at resolutions at which atoms can be resolved. Low Q-score values may therefore be expected for many entries.

9.3 Atom inclusion mapped to coordinate model [i](#)



The images above show the model with each residue coloured according to its atom inclusion. This shows to what extent they are inside the map at the recommended contour level (0.1).





9.4 Atom inclusion [i](#)



At the recommended contour level, 84% of all backbone atoms, 78% of all non-hydrogen atoms, are inside the map.

9.5 Map-model fit summary [i](#)

The table lists the average atom inclusion at the recommended contour level (0.1) and Q-score for the entire model and for each chain.

Chain	Atom inclusion	Q-score
All	 0.7780	 0.4850
A	 0.7800	 0.4860
B	 0.7760	 0.4840

