



Full wwPDB X-ray Structure Validation Report ⓘ

Mar 14, 2018 – 11:58 am GMT

PDB ID : 1U71
Title : Understanding the Role of Leu22 Variants in Methotrexate Resistance: Comparison of Wild-type and Leu22Arg Variant Mouse and Human Dihydrofolate Reductase Ternary Crystal Complexes with Methotrexate and NADPH
Authors : Cody, V.; Luft, J.R.; Pangborn, W.
Deposited on : 2004-08-02
Resolution : 2.20 Å(reported)

This is a Full wwPDB X-ray Structure Validation Report for a publicly released PDB entry.

We welcome your comments at validation@mail.wwpdb.org

A user guide is available at

<https://www.wwpdb.org/validation/2017/XrayValidationReportHelp>

with specific help available everywhere you see the ⓘ symbol.

The following versions of software and data (see [references ⓘ](#)) were used in the production of this report:

MolProbity : 4.02b-467
Mogul : 1.7.3 (157068), CSD as539be (2018)
Xtriage (Phenix) : 1.13
EDS : trunk31020
Percentile statistics : 20171227.v01 (using entries in the PDB archive December 27th 2017)
Refmac : 5.8.0158
CCP4 : 7.0 (Gargrove)
Ideal geometry (proteins) : Engh & Huber (2001)
Ideal geometry (DNA, RNA) : Parkinson et al. (1996)
Validation Pipeline (wwPDB-VP) : trunk31020

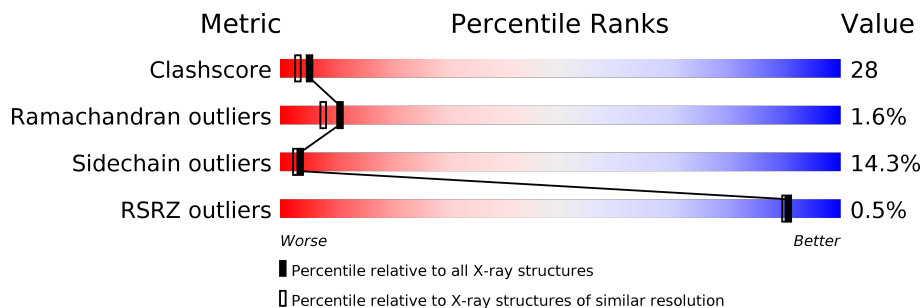
1 Overall quality at a glance

The following experimental techniques were used to determine the structure:

X-RAY DIFFRACTION

The reported resolution of this entry is 2.20 Å.

Percentile scores (ranging between 0-100) for global validation metrics of the entry are shown in the following graphic. The table shows the number of entries on which the scores are based.



Metric	Whole archive (#Entries)	Similar resolution (#Entries, resolution range(Å))
Clashscore	122126	5027 (2.20-2.20)
Ramachandran outliers	120053	4952 (2.20-2.20)
Sidechain outliers	120020	4953 (2.20-2.20)
RSRZ outliers	108989	4245 (2.20-2.20)

The table below summarises the geometric issues observed across the polymeric chains and their fit to the electron density. The red, orange, yellow and green segments on the lower bar indicate the fraction of residues that contain outliers for ≥ 3 , 2, 1 and 0 types of geometric quality criteria. A grey segment represents the fraction of residues that are not modelled. The numeric value for each fraction is indicated below the corresponding segment, with a dot representing fractions $\leq 5\%$. The upper red bar (where present) indicates the fraction of residues that have poor fit to the electron density. The numeric value is given above the bar.

Mol	Chain	Length	Quality of chain
1	A	186	<p>41% 45% 12%</p>

The following table lists non-polymeric compounds, carbohydrate monomers and non-standard residues in protein, DNA, RNA chains that are outliers for geometric or electron-density-fit criteria:

Mol	Type	Chain	Res	Chirality	Geometry	Clashes	Electron density
2	SO4	A	189	-	-	X	-

2 Entry composition [i](#)

There are 4 unique types of molecules in this entry. The entry contains 1607 atoms, of which 0 are hydrogens and 0 are deuteriums.

In the tables below, the ZeroOcc column contains the number of atoms modelled with zero occupancy, the AltConf column contains the number of residues with at least one atom in alternate conformation and the Trace column contains the number of residues modelled with at most 2 atoms.

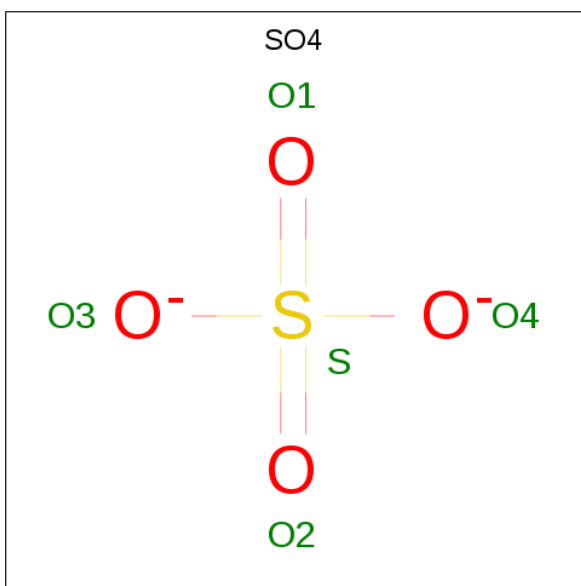
- Molecule 1 is a protein called Dihydrofolate reductase.

Mol	Chain	Residues	Atoms					ZeroOcc	AltConf	Trace
			Total	C	N	O	S			
1	A	186	1505	963	256	279	7	0	0	0

There is a discrepancy between the modelled and reference sequences:

Chain	Residue	Modelled	Actual	Comment	Reference
A	22	ARG	LEU	ENGINEERED	UNP P00374

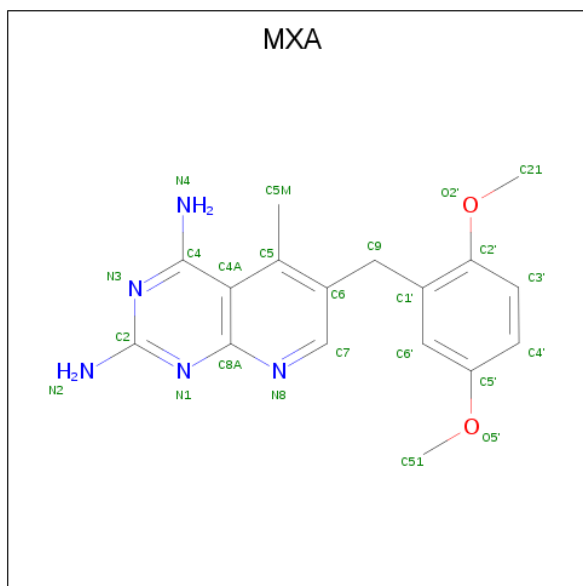
- Molecule 2 is SULFATE ION (three-letter code: SO₄) (formula: O₄S).



Mol	Chain	Residues	Atoms			ZeroOcc	AltConf
			Total	O	S		
2	A	1	5	4	1	0	0
2	A	1	5	4	1	0	0

- Molecule 3 is 6-(2,5-DIMETHOXY-BENZYL)-5-METHYL-PYRIDO[2,3-D]PYRIMIDINE-

2,4-DIAMINE (three-letter code: MXA) (formula: C₁₇H₁₉N₅O₂).



Mol	Chain	Residues	Atoms				ZeroOcc	AltConf
			Total	C	N	O		
3	A	1	24	17	5	2	0	0

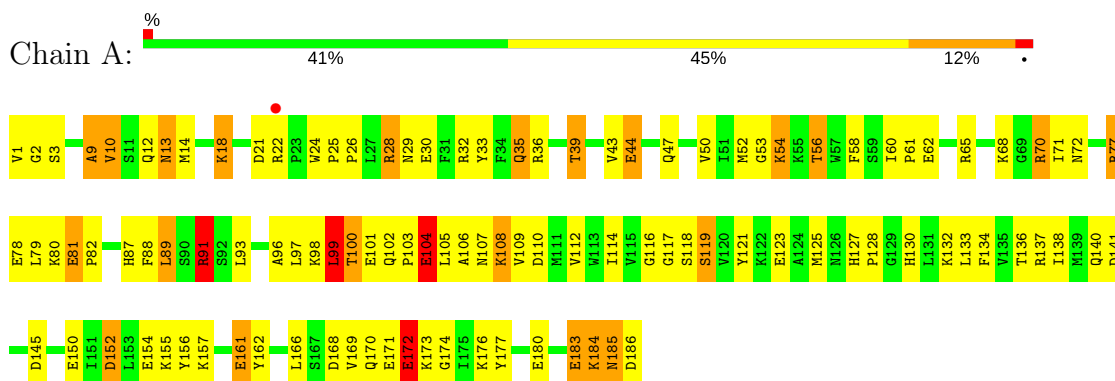
- Molecule 4 is water.

Mol	Chain	Residues	Atoms		ZeroOcc	AltConf
			Total	O		
4	A	68	68	68	0	0

3 Residue-property plots [i](#)

These plots are drawn for all protein, RNA and DNA chains in the entry. The first graphic for a chain summarises the proportions of the various outlier classes displayed in the second graphic. The second graphic shows the sequence view annotated by issues in geometry and electron density. Residues are color-coded according to the number of geometric quality criteria for which they contain at least one outlier: green = 0, yellow = 1, orange = 2 and red = 3 or more. A red dot above a residue indicates a poor fit to the electron density ($RSRZ > 2$). Stretches of 2 or more consecutive residues without any outlier are shown as a green connector. Residues present in the sample, but not in the model, are shown in grey.

- Molecule 1: Dihydrofolate reductase



4 Data and refinement statistics i

Property	Value	Source
Space group	H 3	Depositor
Cell constants a, b, c, α , β , γ	85.14Å 85.14Å 78.04Å 90.00° 90.00° 120.00°	Depositor
Resolution (Å)	50.00 – 2.20 42.57 – 2.18	Depositor EDS
% Data completeness (in resolution range)	87.1 (50.00-2.20) 62.6 (42.57-2.18)	Depositor EDS
R_{merge}	0.06	Depositor
R_{sym}	(Not available)	Depositor
$\langle I/\sigma(I) \rangle$ ¹	5.00 (at 2.18Å)	Xtrriage
Refinement program	PROLSQ	Depositor
R, R_{free}	0.211 , 0.236 0.203 , (Not available)	Depositor DCC
R_{free} test set	No test flags present.	wwPDB-VP
Wilson B-factor (Å ²)	10.6	Xtrriage
Anisotropy	0.157	Xtrriage
Bulk solvent k_{sol} (e/Å ³), B_{sol} (Å ²)	0.34 , 130.7	EDS
L-test for twinning ²	$\langle L \rangle = 0.28$, $\langle L^2 \rangle = 0.11$	Xtrriage
Estimated twinning fraction	0.238 for h,-h-k,-l	Xtrriage
F_o, F_c correlation	0.82	EDS
Total number of atoms	1607	wwPDB-VP
Average B, all atoms (Å ²)	24.0	wwPDB-VP

Xtrriage's analysis on translational NCS is as follows: *The largest off-origin peak in the Patterson function is 3.70% of the height of the origin peak. No significant pseudotranslation is detected.*

¹Intensities estimated from amplitudes.

²Theoretical values of $\langle |L| \rangle$, $\langle L^2 \rangle$ for acentric reflections are 0.5, 0.333 respectively for untwinned datasets, and 0.375, 0.2 for perfectly twinned datasets.

5 Model quality [i](#)

5.1 Standard geometry [i](#)

Bond lengths and bond angles in the following residue types are not validated in this section: SO4, MXA

The Z score for a bond length (or angle) is the number of standard deviations the observed value is removed from the expected value. A bond length (or angle) with $|Z| > 5$ is considered an outlier worth inspection. RMSZ is the root-mean-square of all Z scores of the bond lengths (or angles).

Mol	Chain	Bond lengths		Bond angles	
		RMSZ	# Z >5	RMSZ	# Z >5
1	A	1.16	3/1540 (0.2%)	2.46	82/2076 (3.9%)

All (3) bond length outliers are listed below:

Mol	Chain	Res	Type	Atoms	Z	Observed(Å)	Ideal(Å)
1	A	119	SER	CB-OG	7.84	1.52	1.42
1	A	183	GLU	CD-OE1	-6.67	1.18	1.25
1	A	30	GLU	CD-OE1	-5.69	1.19	1.25

All (82) bond angle outliers are listed below:

Mol	Chain	Res	Type	Atoms	Z	Observed(°)	Ideal(°)
1	A	91	ARG	CD-NE-CZ	29.88	165.43	123.60
1	A	137	ARG	NE-CZ-NH1	-12.48	114.06	120.30
1	A	65	ARG	NE-CZ-NH2	-11.78	114.41	120.30
1	A	77	ARG	NE-CZ-NH1	11.40	126.00	120.30
1	A	21	ASP	CB-CG-OD1	10.58	127.82	118.30
1	A	10	VAL	CA-CB-CG1	9.87	125.71	110.90
1	A	21	ASP	CB-CG-OD2	-9.30	109.93	118.30
1	A	171	GLU	OE1-CD-OE2	9.11	134.24	123.30
1	A	177	TYR	CB-CG-CD2	8.75	126.25	121.00
1	A	172	GLU	CG-CD-OE1	8.72	135.74	118.30
1	A	140	GLN	OE1-CD-NE2	8.54	141.55	121.90
1	A	77	ARG	NE-CZ-NH2	-8.51	116.05	120.30
1	A	22	ARG	NE-CZ-NH1	8.27	124.43	120.30
1	A	110	ASP	CB-CG-OD2	-8.00	111.10	118.30
1	A	110	ASP	CB-CG-OD1	7.90	125.41	118.30
1	A	180	GLU	OE1-CD-OE2	-7.87	113.85	123.30
1	A	162	TYR	CB-CG-CD2	-7.69	116.39	121.00
1	A	141	ASP	CB-CG-OD1	7.57	125.11	118.30

Continued on next page...

Continued from previous page...

Mol	Chain	Res	Type	Atoms	Z	Observed(°)	Ideal(°)
1	A	145	ASP	CB-CA-C	7.35	125.10	110.40
1	A	88	PHE	O-C-N	7.21	134.23	122.70
1	A	12	GLN	N-CA-CB	7.03	123.26	110.60
1	A	171	GLU	O-C-N	6.96	133.83	122.70
1	A	30	GLU	OE1-CD-OE2	-6.85	115.08	123.30
1	A	44	GLU	CB-CG-CD	6.79	132.55	114.20
1	A	180	GLU	CG-CD-OE1	6.79	131.87	118.30
1	A	138	ILE	O-C-N	6.78	133.55	122.70
1	A	174	GLY	C-N-CA	6.76	138.60	121.70
1	A	145	ASP	CB-CG-OD1	6.47	124.13	118.30
1	A	123	GLU	CA-CB-CG	6.43	127.56	113.40
1	A	9	ALA	CA-C-N	6.39	131.26	117.20
1	A	152	ASP	CB-CG-OD1	6.35	124.02	118.30
1	A	91	ARG	CG-CD-NE	6.32	125.08	111.80
1	A	137	ARG	NE-CZ-NH2	6.32	123.46	120.30
1	A	81	GLU	CG-CD-OE1	6.29	130.88	118.30
1	A	161	GLU	CG-CD-OE2	-6.28	105.75	118.30
1	A	134	PHE	CB-CG-CD2	-6.22	116.45	120.80
1	A	58	PHE	O-C-N	6.18	132.59	122.70
1	A	3	SER	O-C-N	6.14	132.52	122.70
1	A	10	VAL	CB-CA-C	-6.13	99.75	111.40
1	A	140	GLN	CG-CD-OE1	-6.08	109.44	121.60
1	A	12	GLN	CA-CB-CG	-6.04	100.12	113.40
1	A	33	TYR	CB-CG-CD2	-5.96	117.42	121.00
1	A	170	GLN	O-C-N	5.93	132.18	122.70
1	A	78	GLU	CG-CD-OE2	-5.88	106.54	118.30
1	A	18	LYS	N-CA-CB	5.85	121.12	110.60
1	A	12	GLN	OE1-CD-NE2	5.84	135.33	121.90
1	A	30	GLU	CA-CB-CG	5.84	126.25	113.40
1	A	140	GLN	CB-CG-CD	-5.84	96.43	111.60
1	A	56	THR	CA-CB-OG1	-5.83	96.75	109.00
1	A	58	PHE	CA-C-O	-5.83	107.86	120.10
1	A	81	GLU	OE1-CD-OE2	-5.76	116.39	123.30
1	A	172	GLU	CG-CD-OE2	-5.65	107.00	118.30
1	A	30	GLU	CG-CD-OE1	5.61	129.52	118.30
1	A	116	GLY	C-N-CA	5.60	134.06	122.30
1	A	78	GLU	N-CA-CB	5.59	120.67	110.60
1	A	3	SER	CA-CB-OG	-5.57	96.17	111.20
1	A	81	GLU	CA-CB-CG	5.52	125.54	113.40
1	A	33	TYR	N-CA-CB	-5.51	100.69	110.60
1	A	9	ALA	C-N-CA	5.50	135.44	121.70
1	A	99	LEU	CA-CB-CG	5.47	127.88	115.30

Continued on next page...

Continued from previous page...

Mol	Chain	Res	Type	Atoms	Z	Observed(°)	Ideal(°)
1	A	121	TYR	O-C-N	5.43	131.38	122.70
1	A	96	ALA	N-CA-CB	5.42	117.69	110.10
1	A	70	ARG	NE-CZ-NH1	5.42	123.01	120.30
1	A	177	TYR	CB-CG-CD1	-5.38	117.78	121.00
1	A	161	GLU	OE1-CD-OE2	5.37	129.75	123.30
1	A	50	VAL	CG1-CB-CG2	-5.36	102.32	110.90
1	A	2	GLY	N-CA-C	-5.35	99.73	113.10
1	A	184	LYS	CD-CE-NZ	-5.31	99.49	111.70
1	A	28	ARG	NE-CZ-NH1	5.26	122.93	120.30
1	A	78	GLU	CB-CA-C	-5.22	99.96	110.40
1	A	78	GLU	CA-CB-CG	5.21	124.85	113.40
1	A	117	GLY	CA-C-O	-5.17	111.30	120.60
1	A	132	LYS	O-C-N	5.17	130.97	122.70
1	A	157	LYS	CA-CB-CG	-5.16	102.06	113.40
1	A	28	ARG	CB-CA-C	5.15	120.70	110.40
1	A	28	ARG	N-CA-CB	-5.12	101.39	110.60
1	A	172	GLU	OE1-CD-OE2	-5.10	117.17	123.30
1	A	172	GLU	CA-CB-CG	5.10	124.63	113.40
1	A	170	GLN	N-CA-CB	5.10	119.78	110.60
1	A	3	SER	N-CA-CB	-5.04	102.95	110.50
1	A	150	GLU	CA-CB-CG	5.02	124.44	113.40
1	A	168	ASP	N-CA-CB	-5.01	101.57	110.60

There are no chirality outliers.

There are no planarity outliers.

5.2 Too-close contacts

In the following table, the Non-H and H(model) columns list the number of non-hydrogen atoms and hydrogen atoms in the chain respectively. The H(added) column lists the number of hydrogen atoms added and optimized by MolProbity. The Clashes column lists the number of clashes within the asymmetric unit, whereas Symm-Clashes lists symmetry related clashes.

Mol	Chain	Non-H	H(model)	H(added)	Clashes	Symm-Clashes
1	A	1505	0	1512	86	0
2	A	10	0	0	3	0
3	A	24	0	19	2	0
4	A	68	0	0	6	0
All	All	1607	0	1531	87	0

The all-atom clashscore is defined as the number of clashes found per 1000 atoms (including

hydrogen atoms). The all-atom clashscore for this structure is 28.

All (87) close contacts within the same asymmetric unit are listed below, sorted by their clash magnitude.

Atom-1	Atom-2	Interatomic distance (Å)	Clash overlap (Å)
1:A:105:LEU:HA	1:A:108:LYS:HG3	1.34	1.05
1:A:35:GLN:HE21	1:A:70:ARG:HH12	1.19	0.88
1:A:103:PRO:HD2	4:A:207:HOH:O	1.75	0.86
1:A:47:GLN:HG3	4:A:235:HOH:O	1.78	0.83
1:A:35:GLN:NE2	1:A:70:ARG:HH12	1.77	0.82
1:A:28:ARG:O	1:A:32:ARG:HG3	1.82	0.80
1:A:35:GLN:HE22	1:A:70:ARG:HH22	1.29	0.79
1:A:93:LEU:HD11	1:A:114:ILE:HD11	1.67	0.76
1:A:105:LEU:HA	1:A:108:LYS:CG	2.18	0.72
1:A:79:LEU:O	1:A:91:ARG:NH2	2.24	0.71
1:A:26:PRO:O	1:A:173:LYS:HE2	1.91	0.71
1:A:97:LEU:O	1:A:100:THR:HB	1.92	0.70
1:A:184:LYS:HE3	1:A:186:ASP:OD1	1.92	0.70
1:A:35:GLN:NE2	1:A:70:ARG:HH22	1.90	0.69
1:A:89:LEU:HG	1:A:91:ARG:HH11	1.58	0.68
1:A:35:GLN:O	1:A:39:THR:OG1	2.12	0.67
1:A:26:PRO:O	1:A:173:LYS:CE	2.42	0.67
1:A:72:ASN:H	1:A:87:HIS:HD2	1.40	0.67
1:A:154:GLU:OE2	4:A:222:HOH:O	2.12	0.66
1:A:99:LEU:HA	1:A:102:GLN:HG2	1.78	0.66
1:A:35:GLN:HE21	1:A:70:ARG:NH1	1.93	0.65
1:A:184:LYS:HG2	1:A:185:ASN:N	2.10	0.65
1:A:105:LEU:CA	1:A:108:LYS:HG3	2.21	0.65
1:A:104:GLU:O	1:A:108:LYS:NZ	2.31	0.62
1:A:72:ASN:H	1:A:87:HIS:CD2	2.16	0.61
1:A:102:GLN:O	1:A:106:ALA:HB2	2.00	0.61
1:A:102:GLN:C	1:A:104:GLU:H	2.04	0.60
1:A:61:PRO:HD2	3:A:187:MXA:H213	1.85	0.59
1:A:93:LEU:HD11	1:A:114:ILE:CD1	2.33	0.59
1:A:1:VAL:HG13	1:A:100:THR:HG23	1.85	0.58
1:A:71:ILE:HD13	1:A:105:LEU:HD22	1.86	0.58
1:A:161:GLU:O	4:A:228:HOH:O	2.17	0.58
1:A:130:HIS:HE1	1:A:183:GLU:OE1	1.88	0.57
1:A:130:HIS:CE1	1:A:183:GLU:OE1	2.58	0.56
1:A:98:LYS:O	1:A:102:GLN:NE2	2.38	0.56
1:A:71:ILE:HD13	1:A:105:LEU:CD2	2.35	0.56
1:A:127:HIS:HB2	4:A:257:HOH:O	2.05	0.55
1:A:35:GLN:NE2	1:A:70:ARG:NH1	2.51	0.55

Continued on next page...

Continued from previous page...

Atom-1	Atom-2	Interatomic distance (Å)	Clash overlap (Å)
1:A:81:GLU:HB2	1:A:82:PRO:HD2	1.87	0.55
1:A:102:GLN:C	1:A:104:GLU:N	2.60	0.54
1:A:1:VAL:CG1	1:A:100:THR:CG2	2.86	0.53
1:A:101:GLU:O	1:A:102:GLN:C	2.47	0.53
1:A:93:LEU:O	1:A:97:LEU:HG	2.08	0.53
1:A:156:TYR:CD2	1:A:184:LYS:HB2	2.45	0.52
1:A:105:LEU:O	1:A:108:LYS:N	2.40	0.52
1:A:29:ASN:HB2	1:A:172:GLU:OE1	2.12	0.50
1:A:89:LEU:HD11	1:A:91:ARG:HH12	1.75	0.49
1:A:1:VAL:HG11	1:A:100:THR:HG21	1.93	0.49
1:A:89:LEU:CG	1:A:91:ARG:HH11	2.25	0.49
1:A:89:LEU:CG	1:A:91:ARG:NH1	2.76	0.48
1:A:89:LEU:HD21	1:A:91:ARG:NH1	2.28	0.48
1:A:105:LEU:HB3	1:A:109:VAL:CG2	2.43	0.48
1:A:54:LYS:HE3	4:A:240:HOH:O	2.13	0.48
1:A:184:LYS:HE3	1:A:186:ASP:CG	2.34	0.47
1:A:89:LEU:HD11	1:A:91:ARG:NH1	2.28	0.47
1:A:100:THR:O	1:A:106:ALA:HA	2.15	0.47
1:A:97:LEU:O	1:A:98:LYS:C	2.51	0.47
1:A:184:LYS:CE	1:A:186:ASP:OD1	2.62	0.47
1:A:54:LYS:HG3	1:A:79:LEU:HD11	1.96	0.47
1:A:52:MET:HB2	1:A:56:THR:HB	1.97	0.46
1:A:105:LEU:HB3	1:A:109:VAL:HG23	1.97	0.46
1:A:1:VAL:HG11	1:A:100:THR:CG2	2.45	0.46
1:A:35:GLN:NE2	1:A:70:ARG:NH2	2.61	0.46
1:A:125:MET:HE3	1:A:125:MET:HB3	1.58	0.46
1:A:184:LYS:HG2	1:A:185:ASN:H	1.81	0.45
1:A:29:ASN:OD1	1:A:32:ARG:NH1	2.50	0.45
1:A:169:VAL:HG11	1:A:176:LYS:HD3	1.99	0.44
1:A:186:ASP:OD1	1:A:186:ASP:C	2.53	0.44
1:A:24:TRP:HB2	1:A:25:PRO:HD2	1.99	0.44
1:A:1:VAL:HG21	1:A:100:THR:HG21	1.99	0.43
1:A:60:ILE:O	1:A:61:PRO:C	2.56	0.43
1:A:77:ARG:N	2:A:189:SO4:O1	2.44	0.42
1:A:9:ALA:HA	1:A:136:THR:HB	2.01	0.42
1:A:156:TYR:CE2	1:A:184:LYS:HB2	2.55	0.42
1:A:36:ARG:HG2	1:A:36:ARG:NH1	2.35	0.42
1:A:105:LEU:C	1:A:108:LYS:HG3	2.40	0.42
1:A:1:VAL:CG1	1:A:100:THR:HG21	2.48	0.42
1:A:81:GLU:HB2	1:A:82:PRO:CD	2.49	0.42
1:A:100:THR:O	1:A:106:ALA:CA	2.68	0.42

Continued on next page...

Continued from previous page...

Atom-1	Atom-2	Interatomic distance (Å)	Clash overlap (Å)
1:A:77:ARG:HB2	2:A:189:SO4:O1	2.20	0.42
1:A:152:ASP:OD1	1:A:155:LYS:CE	2.68	0.41
1:A:99:LEU:HD23	1:A:105:LEU:HD12	2.03	0.41
1:A:79:LEU:HB2	1:A:89:LEU:HD11	2.03	0.41
3:A:187:MXA:H91	3:A:187:MXA:H5M1	1.65	0.41
1:A:105:LEU:O	1:A:106:ALA:C	2.59	0.41
1:A:13:ASN:O	1:A:14:MET:HB2	2.21	0.41
1:A:53:GLY:HA3	2:A:188:SO4:S	2.61	0.40

There are no symmetry-related clashes.

5.3 Torsion angles [i](#)

5.3.1 Protein backbone [i](#)

In the following table, the Percentiles column shows the percent Ramachandran outliers of the chain as a percentile score with respect to all X-ray entries followed by that with respect to entries of similar resolution.

The Analysed column shows the number of residues for which the backbone conformation was analysed, and the total number of residues.

Mol	Chain	Analysed	Favoured	Allowed	Outliers	Percentiles
1	A	184/186 (99%)	171 (93%)	10 (5%)	3 (2%)	11 8

All (3) Ramachandran outliers are listed below:

Mol	Chain	Res	Type
1	A	44	GLU
1	A	43	VAL
1	A	104	GLU

5.3.2 Protein sidechains [i](#)

In the following table, the Percentiles column shows the percent sidechain outliers of the chain as a percentile score with respect to all X-ray entries followed by that with respect to entries of similar resolution.

The Analysed column shows the number of residues for which the sidechain conformation was analysed, and the total number of residues.

Mol	Chain	Analysed	Rotameric	Outliers	Percentiles
1	A	168/168 (100%)	144 (86%)	24 (14%)	3 3

All (24) residues with a non-rotameric sidechain are listed below:

Mol	Chain	Res	Type
1	A	10	VAL
1	A	13	ASN
1	A	18	LYS
1	A	35	GLN
1	A	39	THR
1	A	54	LYS
1	A	62	GLU
1	A	68	LYS
1	A	80	LYS
1	A	89	LEU
1	A	91	ARG
1	A	99	LEU
1	A	100	THR
1	A	104	GLU
1	A	107	ASN
1	A	108	LYS
1	A	112	VAL
1	A	118	SER
1	A	119	SER
1	A	128	PRO
1	A	133	LEU
1	A	166	LEU
1	A	172	GLU
1	A	185	ASN

Some sidechains can be flipped to improve hydrogen bonding and reduce clashes. All (6) such sidechains are listed below:

Mol	Chain	Res	Type
1	A	5	ASN
1	A	12	GLN
1	A	35	GLN
1	A	87	HIS
1	A	102	GLN
1	A	185	ASN

5.3.3 RNA [i](#)

There are no RNA molecules in this entry.

5.4 Non-standard residues in protein, DNA, RNA chains [i](#)

There are no non-standard protein/DNA/RNA residues in this entry.

5.5 Carbohydrates [i](#)

There are no carbohydrates in this entry.

5.6 Ligand geometry [i](#)

3 ligands are modelled in this entry.

In the following table, the Counts columns list the number of bonds (or angles) for which Mogul statistics could be retrieved, the number of bonds (or angles) that are observed in the model and the number of bonds (or angles) that are defined in the Chemical Component Dictionary. The Link column lists molecule types, if any, to which the group is linked. The Z score for a bond length (or angle) is the number of standard deviations the observed value is removed from the expected value. A bond length (or angle) with $|Z| > 2$ is considered an outlier worth inspection. RMSZ is the root-mean-square of all Z scores of the bond lengths (or angles).

Mol	Type	Chain	Res	Link	Bond lengths			Bond angles		
					Counts	RMSZ	# Z > 2	Counts	RMSZ	# Z > 2
3	MXA	A	187	-	26,26,26	1.07	2 (7%)	34,37,37	1.60	8 (23%)
2	SO4	A	188	-	4,4,4	0.61	0	6,6,6	0.65	0
2	SO4	A	189	-	4,4,4	0.51	0	6,6,6	0.80	0

In the following table, the Chirals column lists the number of chiral outliers, the number of chiral centers analysed, the number of these observed in the model and the number defined in the Chemical Component Dictionary. Similar counts are reported in the Torsion and Rings columns. '-' means no outliers of that kind were identified.

Mol	Type	Chain	Res	Link	Chirals	Torsions	Rings
3	MXA	A	187	-	-	0/8/8/8	0/3/3/3
2	SO4	A	188	-	-	0/0/0/0	0/0/0/0
2	SO4	A	189	-	-	0/0/0/0	0/0/0/0

All (2) bond length outliers are listed below:

Mol	Chain	Res	Type	Atoms	Z	Observed(Å)	Ideal(Å)
3	A	187	MXA	C4'-C5'	-2.34	1.33	1.38
3	A	187	MXA	C4-N3	-2.29	1.29	1.33

All (8) bond angle outliers are listed below:

Mol	Chain	Res	Type	Atoms	Z	Observed(°)	Ideal(°)
3	A	187	MXA	C51-O5'-C5'	-3.34	110.26	117.51
3	A	187	MXA	C5M-C5-C6	-2.83	117.48	120.69
3	A	187	MXA	C9-C6-C7	-2.73	117.95	121.73
3	A	187	MXA	N8-C8A-N1	-2.61	112.81	115.97
3	A	187	MXA	O5'-C5'-C6'	-2.35	108.68	119.94
3	A	187	MXA	C4A-C4-N4	2.11	126.67	122.72
3	A	187	MXA	O5'-C5'-C4'	2.47	131.69	119.83
3	A	187	MXA	C1'-C9-C6	3.17	121.65	112.72

There are no chirality outliers.

There are no torsion outliers.

There are no ring outliers.

3 monomers are involved in 5 short contacts:

Mol	Chain	Res	Type	Clashes	Symm-Clashes
3	A	187	MXA	2	0
2	A	188	SO4	1	0
2	A	189	SO4	2	0

5.7 Other polymers [i](#)

There are no such residues in this entry.

5.8 Polymer linkage issues [i](#)

There are no chain breaks in this entry.

6 Fit of model and data [i](#)

6.1 Protein, DNA and RNA chains [i](#)

In the following table, the column labelled ‘#RSRZ> 2’ contains the number (and percentage) of RSRZ outliers, followed by percent RSRZ outliers for the chain as percentile scores relative to all X-ray entries and entries of similar resolution. The OWAB column contains the minimum, median, 95th percentile and maximum values of the occupancy-weighted average B-factor per residue. The column labelled ‘Q< 0.9’ lists the number of (and percentage) of residues with an average occupancy less than 0.9.

Mol	Chain	Analysed	<RSRZ>	#RSRZ>2	OWAB(Å ²)	Q<0.9
1	A	186/186 (100%)	-0.08	1 (0%) 90 90	10, 22, 43, 53	1 (0%)

All (1) RSRZ outliers are listed below:

Mol	Chain	Res	Type	RSRZ
1	A	22	ARG	3.0

6.2 Non-standard residues in protein, DNA, RNA chains [i](#)

There are no non-standard protein/DNA/RNA residues in this entry.

6.3 Carbohydrates [i](#)

There are no carbohydrates in this entry.

6.4 Ligands [i](#)

In the following table, the Atoms column lists the number of modelled atoms in the group and the number defined in the chemical component dictionary. The B-factors column lists the minimum, median, 95th percentile and maximum values of B factors of atoms in the group. The column labelled ‘Q< 0.9’ lists the number of atoms with occupancy less than 0.9.

Mol	Type	Chain	Res	Atoms	RSCC	RSR	B-factors(Å ²)	Q<0.9
3	MXA	A	187	24/24	0.71	0.38	2,5,14,16	24
2	SO4	A	189	5/5	0.96	0.13	45,45,45,45	0
2	SO4	A	188	5/5	0.98	0.11	20,20,20,21	0

6.5 Other polymers [i](#)

There are no such residues in this entry.