



# Full wwPDB X-ray Structure Validation Report ⓘ

Jan 12, 2025 – 08:08 PM EST

PDB ID : 8U7C  
Title : Engineered NEMO minimal IKK-binding domain  
Authors : Kennedy, A.E.; Pellegrini, M.  
Deposited on : 2023-09-15  
Resolution : 1.44 Å(reported)

This is a Full wwPDB X-ray Structure Validation Report for a publicly released PDB entry.

We welcome your comments at [validation@mail.wwpdb.org](mailto:validation@mail.wwpdb.org)

A user guide is available at

<https://www.wwpdb.org/validation/2017/XrayValidationReportHelp>

with specific help available everywhere you see the ⓘ symbol.

The types of validation reports are described at

<http://www.wwpdb.org/validation/2017/FAQs#types>.

---

The following versions of software and data (see [references ⓘ](#)) were used in the production of this report:

MolProbity : 4.02b-467  
Mogul : 2022.3.0, CSD as543be (2022)  
Xtriage (Phenix) : 1.21  
EDS : 3.0  
Percentile statistics : 20231227.v01 (using entries in the PDB archive December 27th 2023)  
CCP4 : 9.0.004 (Gargrove)  
Density-Fitness : 1.0.11  
Ideal geometry (proteins) : Engh & Huber (2001)  
Ideal geometry (DNA, RNA) : Parkinson et al. (1996)  
Validation Pipeline (wwPDB-VP) : 2.40

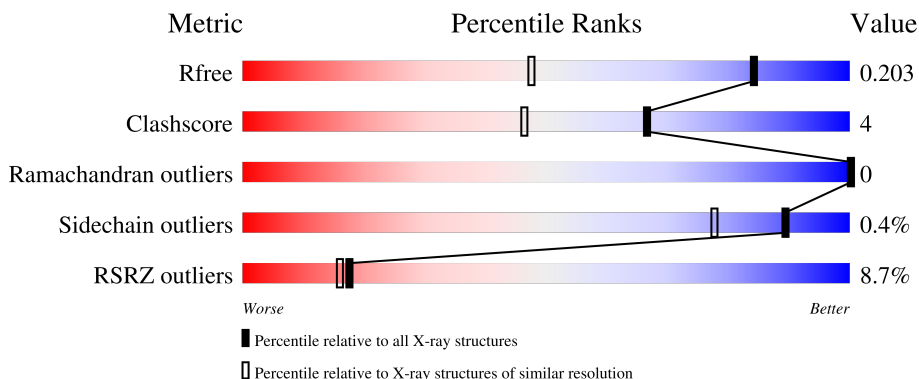
# 1 Overall quality at a glance

The following experimental techniques were used to determine the structure:

*X-RAY DIFFRACTION*

The reported resolution of this entry is 1.44 Å.

Percentile scores (ranging between 0-100) for global validation metrics of the entry are shown in the following graphic. The table shows the number of entries on which the scores are based.



Metric	Whole archive (#Entries)	Similar resolution (#Entries, resolution range(Å))
$R_{free}$	164625	2809 (1.46-1.42)
Clashscore	180529	3008 (1.46-1.42)
Ramachandran outliers	177936	2971 (1.46-1.42)
Sidechain outliers	177891	2971 (1.46-1.42)
RSRZ outliers	164620	2809 (1.46-1.42)

The table below summarises the geometric issues observed across the polymeric chains and their fit to the electron density. The red, orange, yellow and green segments of the lower bar indicate the fraction of residues that contain outliers for  $\geq 3$ , 2, 1 and 0 types of geometric quality criteria respectively. A grey segment represents the fraction of residues that are not modelled. The numeric value for each fraction is indicated below the corresponding segment, with a dot representing fractions  $\leq 5\%$ . The upper red bar (where present) indicates the fraction of residues that have poor fit to the electron density. The numeric value is given above the bar.

Mol	Chain	Length	Quality of chain
1	A	67	 12% 88% 10%
1	B	67	 13% 82% 6% 12%
1	C	67	 6% 81% 13% 6%
1	D	67	 85% 9% 6%

## 2 Entry composition

There are 9 unique types of molecules in this entry. The entry contains 2524 atoms, of which 0 are hydrogens and 0 are deuteriums.

In the tables below, the ZeroOcc column contains the number of atoms modelled with zero occupancy, the AltConf column contains the number of residues with at least one atom in alternate conformation and the Trace column contains the number of residues modelled with at most 2 atoms.

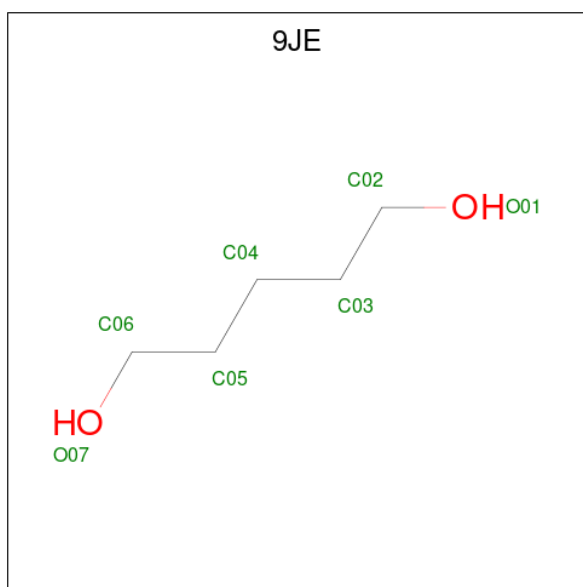
- Molecule 1 is a protein called Engineered NEMO minimal IKK-binding domain.

Mol	Chain	Residues	Atoms						ZeroOcc	AltConf	Trace
			Total	C	N	O	S	Se			
1	A	60	528	324	100	101	2	1	0	2	0
1	B	59	539	329	106	101	2	1	0	4	0
1	C	63	594	364	112	115	2	1	0	8	0
1	D	63	574	356	109	106	2	1	0	5	0

- Molecule 2 is TERBIUM(III) ION (three-letter code: Tb) (formula: Tb).

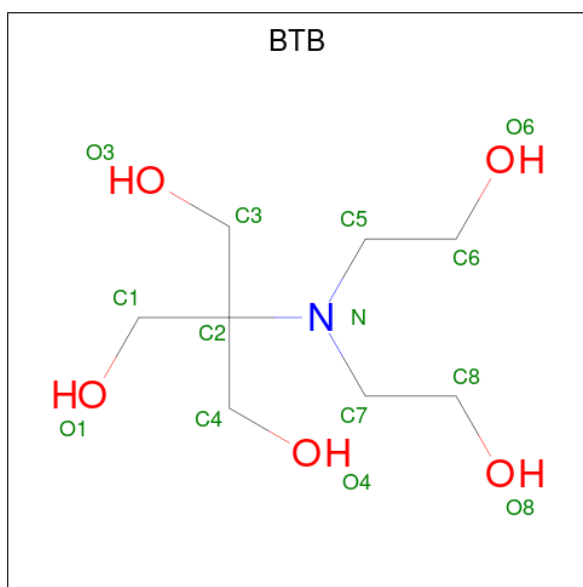
Mol	Chain	Residues	Atoms		ZeroOcc	AltConf
2	A	1	Total	Tb	0	0
			1	1		
2	D	2	Total	Tb	0	0
			2	2		

- Molecule 3 is pentane-1,5-diol (three-letter code: 9JE) (formula: C<sub>5</sub>H<sub>12</sub>O<sub>2</sub>).



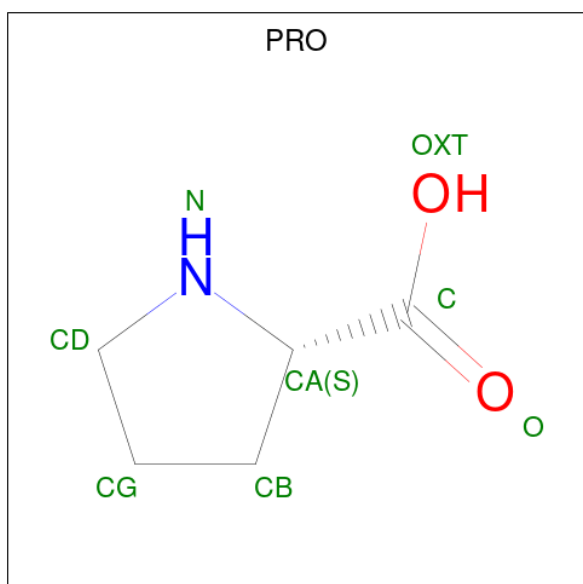
Mol	Chain	Residues	Atoms	ZeroOcc	AltConf
3	A	1	Total C O 7 5 2	0	0
3	A	1	Total C O 7 5 2	0	0
3	B	1	Total C O 7 5 2	0	0
3	B	1	Total C O 7 5 2	0	0
3	D	1	Total C O 7 5 2	0	0

- Molecule 4 is 2-[BIS-(2-HYDROXY-ETHYL)-AMINO]-2-HYDROXYMETHYL-PROPAN E-1,3-DIOL (three-letter code: BTB) (formula: C<sub>8</sub>H<sub>19</sub>NO<sub>5</sub>).



Mol	Chain	Residues	Atoms				ZeroOcc	AltConf
			Total	C	N	O		
4	A	1	Total 14	C 8	N 1	O 5	0	0
4	D	1	Total 14	C 8	N 1	O 5	0	0
4	D	1	Total 14	C 8	N 1	O 5	0	0
4	D	1	Total 14	C 8	N 1	O 5	0	0
4	D	1	Total 14	C 8	N 1	O 5	0	0

- Molecule 5 is PROLINE (three-letter code: PRO) (formula:  $C_5H_9NO_2$ ).

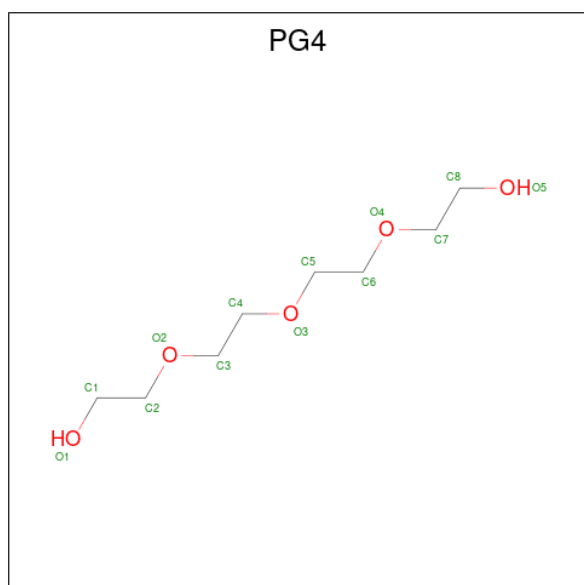


Mol	Chain	Residues	Atoms				ZeroOcc	AltConf
5	A	1	Total	C	N	O	0	0
			8	5	1	2		
5	B	1	Total	C	N	O	0	0
			8	5	1	2		

- Molecule 6 is YTTRIUM (III) ION (three-letter code: YT3) (formula: Y).

Mol	Chain	Residues	Atoms		ZeroOcc	AltConf
6	B	1	Total	Y	0	0
			1	1		
6	D	1	Total	Y	0	0
			1	1		

- Molecule 7 is TETRAETHYLENE GLYCOL (three-letter code: PG4) (formula: C<sub>8</sub>H<sub>18</sub>O<sub>5</sub>).



Mol	Chain	Residues	Atoms			ZeroOcc	AltConf
7	B	1	Total	C	O	0	0
			10	6	4		
7	D	1	Total	C	O	0	0
			13	8	5		

- Molecule 8 is ERBIUM (III) ION (three-letter code: ER3) (formula: Er).

Mol	Chain	Residues	Atoms		ZeroOcc	AltConf
8	D	1	Total	Er	0	0
			1	1		

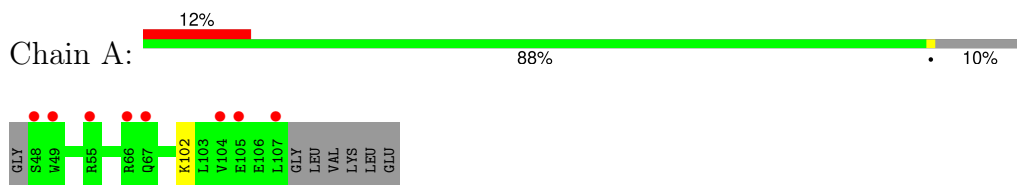
- Molecule 9 is water.

Mol	Chain	Residues	Atoms	ZeroOcc	AltConf
9	A	37	Total O 37 37	0	0
9	B	25	Total O 25 25	0	0
9	C	31	Total O 31 31	0	0
9	D	46	Total O 46 46	0	0

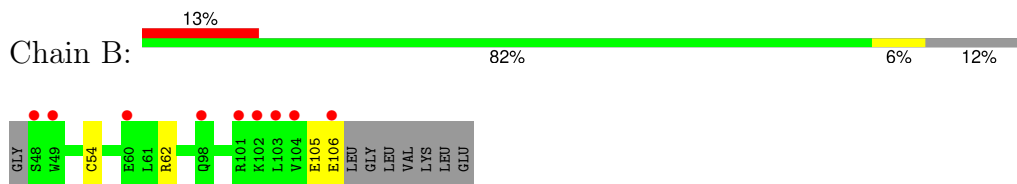
### 3 Residue-property plots [i](#)

These plots are drawn for all protein, RNA, DNA and oligosaccharide chains in the entry. The first graphic for a chain summarises the proportions of the various outlier classes displayed in the second graphic. The second graphic shows the sequence view annotated by issues in geometry and electron density. Residues are color-coded according to the number of geometric quality criteria for which they contain at least one outlier: green = 0, yellow = 1, orange = 2 and red = 3 or more. A red dot above a residue indicates a poor fit to the electron density ( $RSRZ > 2$ ). Stretches of 2 or more consecutive residues without any outlier are shown as a green connector. Residues present in the sample, but not in the model, are shown in grey.

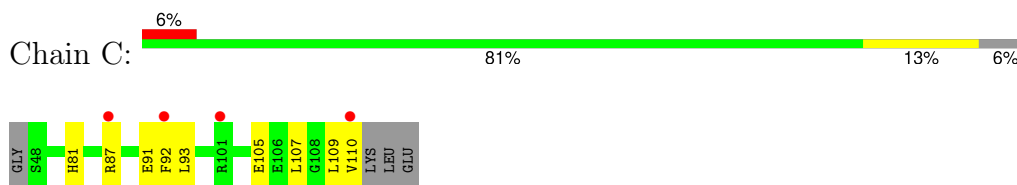
- Molecule 1: Engineered NEMO minimal IKK-binding domain



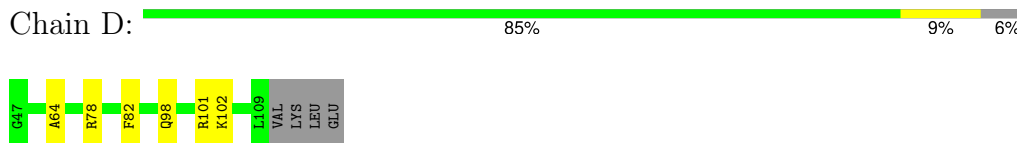
- Molecule 1: Engineered NEMO minimal IKK-binding domain



- Molecule 1: Engineered NEMO minimal IKK-binding domain



- Molecule 1: Engineered NEMO minimal IKK-binding domain





## 4 Data and refinement statistics

Property	Value	Source
Space group	P 1	Depositor
Cell constants a, b, c, $\alpha$ , $\beta$ , $\gamma$	37.51Å 40.89Å 50.15Å 92.62° 106.14° 98.87°	Depositor
Resolution (Å)	40.23 – 1.44 40.23 – 1.44	Depositor EDS
% Data completeness (in resolution range)	61.6 (40.23-1.44) 62.4 (40.23-1.44)	Depositor EDS
$R_{merge}$	0.17	Depositor
$R_{sym}$	(Not available)	Depositor
$\langle I/\sigma(I) \rangle$ <sup>1</sup>	1.24 (at 1.43Å)	Xtrriage
Refinement program	PHENIX 1.20.1_4487	Depositor
R, $R_{free}$	0.173 , 0.202 0.173 , 0.203	Depositor DCC
$R_{free}$ test set	48775 reflections (6.32%)	wwPDB-VP
Wilson B-factor (Å <sup>2</sup> )	13.0	Xtrriage
Anisotropy	0.046	Xtrriage
Bulk solvent $k_{sol}$ (e/Å <sup>3</sup> ), $B_{sol}$ (Å <sup>2</sup> )	0.35 , 40.9	EDS
L-test for twinning <sup>2</sup>	$\langle  L  \rangle = 0.51$ , $\langle L^2 \rangle = 0.35$	Xtrriage
Estimated twinning fraction	No twinning to report.	Xtrriage
$F_o, F_c$ correlation	0.96	EDS
Total number of atoms	2524	wwPDB-VP
Average B, all atoms (Å <sup>2</sup> )	24.0	wwPDB-VP

Xtrriage's analysis on translational NCS is as follows: *The largest off-origin peak in the Patterson function is 11.84% of the height of the origin peak. No significant pseudotranslation is detected.*

<sup>1</sup>Intensities estimated from amplitudes.

<sup>2</sup>Theoretical values of  $\langle |L| \rangle$ ,  $\langle L^2 \rangle$  for acentric reflections are 0.5, 0.333 respectively for untwinned datasets, and 0.375, 0.2 for perfectly twinned datasets.

## 5 Model quality [i](#)

### 5.1 Standard geometry [i](#)

Bond lengths and bond angles in the following residue types are not validated in this section: TB, ER3, YT3, BTB, PG4, 9JE

The Z score for a bond length (or angle) is the number of standard deviations the observed value is removed from the expected value. A bond length (or angle) with  $|Z| > 5$  is considered an outlier worth inspection. RMSZ is the root-mean-square of all Z scores of the bond lengths (or angles).

Mol	Chain	Bond lengths		Bond angles	
		RMSZ	# Z  >5	RMSZ	# Z  >5
1	A	0.54	0/535	0.67	0/710
1	B	0.56	0/549	0.75	0/727
1	C	0.68	0/604	0.72	0/802
1	D	0.60	0/585	0.70	0/776
All	All	0.60	0/2273	0.71	0/3015

There are no bond length outliers.

There are no bond angle outliers.

There are no chirality outliers.

There are no planarity outliers.

### 5.2 Too-close contacts [i](#)

In the following table, the Non-H and H(model) columns list the number of non-hydrogen atoms and hydrogen atoms in the chain respectively. The H(added) column lists the number of hydrogen atoms added and optimized by MolProbity. The Clashes column lists the number of clashes within the asymmetric unit, whereas Symm-Clashes lists symmetry-related clashes.

Mol	Chain	Non-H	H(model)	H(added)	Clashes	Symm-Clashes
1	A	528	0	520	0	2
1	B	539	0	534	4	0
1	C	594	0	584	9	0
1	D	574	0	571	6	0
2	A	1	0	0	0	0
2	D	2	0	0	0	0
3	A	14	0	0	0	0
3	B	14	0	0	0	0
3	D	7	0	0	1	0

*Continued on next page...*

Continued from previous page...

Mol	Chain	Non-H	H(model)	H(added)	Clashes	Symm-Clashes
4	A	14	0	15	0	0
4	D	56	0	68	2	2
5	A	8	0	7	0	0
5	B	8	0	7	1	0
6	B	1	0	0	0	0
6	D	1	0	0	0	0
7	B	10	0	13	1	0
7	D	13	0	18	0	0
8	D	1	0	0	0	0
9	A	37	0	0	0	0
9	B	25	0	0	0	0
9	C	31	0	0	1	0
9	D	46	0	0	0	0
All	All	2524	0	2337	17	2

The all-atom clashscore is defined as the number of clashes found per 1000 atoms (including hydrogen atoms). The all-atom clashscore for this structure is 4.

All (17) close contacts within the same asymmetric unit are listed below, sorted by their clash magnitude.

Atom-1	Atom-2	Interatomic distance (Å)	Clash overlap (Å)
1:D:98:GLN:HE21	1:D:102:LYS:HE2	1.55	0.72
1:C:105:GLU:HG2	1:C:110:VAL:HG21	1.78	0.64
1:C:93:LEU:HG	1:D:78[B]:ARG:HG2	1.83	0.61
1:C:81:HIS:CE1	9:C:211:HOH:O	2.52	0.61
1:B:105:GLU:O	1:B:106:GLU:HB2	2.02	0.60
1:B:62[B]:ARG:HD2	1:C:109:LEU:HD21	1.85	0.58
1:C:92:PHE:HB2	1:D:78[B]:ARG:HD2	1.87	0.56
1:B:54[B]:CYS:SG	5:B:205:PRO:HB3	2.46	0.56
1:C:105:GLU:CG	1:C:110:VAL:HG21	2.36	0.55
1:D:98:GLN:OE1	1:D:101:ARG:NH2	2.41	0.53
1:D:101:ARG:NH2	3:D:205:9JE:O01	2.39	0.53
1:C:87:ARG:O	1:C:91:GLU:HG2	2.11	0.49
4:D:209:BTB:O1	4:D:209:BTB:H51	2.19	0.42
1:B:62[B]:ARG:CD	1:C:109:LEU:HD21	2.49	0.42
7:B:203:PG4:H62	7:B:203:PG4:H42	1.69	0.41
4:D:208:BTB:H32	4:D:208:BTB:H51	1.80	0.41
1:C:107:LEU:HD11	1:D:64:ALA:CB	2.51	0.40

All (2) symmetry-related close contacts are listed below. The label for Atom-2 includes the symmetry operator and encoded unit-cell translations to be applied.

Atom-1	Atom-2	Interatomic distance (Å)	Clash overlap (Å)
1:A:102:LYS:CE	4:D:210:BTB:O3[1_545]	1.40	0.80
1:A:102:LYS:CE	4:D:210:BTB:C3[1_545]	1.96	0.24

### 5.3 Torsion angles [i](#)

#### 5.3.1 Protein backbone [i](#)

In the following table, the Percentiles column shows the percent Ramachandran outliers of the chain as a percentile score with respect to all X-ray entries followed by that with respect to entries of similar resolution.

The Analysed column shows the number of residues for which the backbone conformation was analysed, and the total number of residues.

Mol	Chain	Analysed	Favoured	Allowed	Outliers	Percentiles	
1	A	60/67 (90%)	60 (100%)	0	0	100	100
1	B	61/67 (91%)	60 (98%)	1 (2%)	0	100	100
1	C	69/67 (103%)	69 (100%)	0	0	100	100
1	D	66/67 (98%)	66 (100%)	0	0	100	100
All	All	256/268 (96%)	255 (100%)	1 (0%)	0	100	100

There are no Ramachandran outliers to report.

#### 5.3.2 Protein sidechains [i](#)

In the following table, the Percentiles column shows the percent sidechain outliers of the chain as a percentile score with respect to all X-ray entries followed by that with respect to entries of similar resolution.

The Analysed column shows the number of residues for which the sidechain conformation was analysed, and the total number of residues.

Mol	Chain	Analysed	Rotameric	Outliers	Percentiles	
1	A	58/60 (97%)	58 (100%)	0	100	100
1	B	59/60 (98%)	59 (100%)	0	100	100
1	C	66/60 (110%)	66 (100%)	0	100	100
1	D	62/60 (103%)	61 (98%)	1 (2%)	58	26
All	All	245/240 (102%)	244 (100%)	1 (0%)	89	78

All (1) residues with a non-rotameric sidechain are listed below:

Mol	Chain	Res	Type
1	D	82	PHE

Sometimes sidechains can be flipped to improve hydrogen bonding and reduce clashes. All (3) such sidechains are listed below:

Mol	Chain	Res	Type
1	C	81	HIS
1	D	83	GLN
1	D	86	GLN

### 5.3.3 RNA [i](#)

There are no RNA molecules in this entry.

## 5.4 Non-standard residues in protein, DNA, RNA chains [i](#)

There are no non-standard protein/DNA/RNA residues in this entry.

## 5.5 Carbohydrates [i](#)

There are no oligosaccharides in this entry.

## 5.6 Ligand geometry [i](#)

Of 20 ligands modelled in this entry, 6 are monoatomic - leaving 14 for Mogul analysis.

In the following table, the Counts columns list the number of bonds (or angles) for which Mogul statistics could be retrieved, the number of bonds (or angles) that are observed in the model and the number of bonds (or angles) that are defined in the Chemical Component Dictionary. The Link column lists molecule types, if any, to which the group is linked. The Z score for a bond length (or angle) is the number of standard deviations the observed value is removed from the expected value. A bond length (or angle) with  $|Z| > 2$  is considered an outlier worth inspection. RMSZ is the root-mean-square of all Z scores of the bond lengths (or angles).

Mol	Type	Chain	Res	Link	Bond lengths			Bond angles		
					Counts	RMSZ	$\# Z  > 2$	Counts	RMSZ	$\# Z  > 2$
3	9JE	D	205	-	6,6,6	0.19	0	5,5,5	0.39	0
4	BTB	D	209	2	13,13,13	0.84	1 (7%)	7,16,16	0.87	0
4	BTB	A	204	2	13,13,13	1.03	1 (7%)	7,16,16	0.46	0

Mol	Type	Chain	Res	Link	Bond lengths			Bond angles		
					Counts	RMSZ	# Z  > 2	Counts	RMSZ	# Z  > 2
4	BTB	D	207	2,8	13,13,13	1.21	1 (7%)	7,16,16	0.90	0
3	9JE	A	202	-	6,6,6	0.10	0	5,5,5	0.42	0
4	BTB	D	208	2,8	13,13,13	1.22	1 (7%)	7,16,16	1.71	3 (42%)
3	9JE	A	203	-	6,6,6	0.18	0	5,5,5	0.36	0
7	PG4	D	206	-	12,12,12	0.73	0	11,11,11	0.92	0
5	PRO	A	205	-	8,8,8	0.92	1 (12%)	10,10,10	1.61	2 (20%)
5	PRO	B	205	-	8,8,8	0.95	1 (12%)	10,10,10	1.49	2 (20%)
3	9JE	B	204	-	6,6,6	0.13	0	5,5,5	0.45	0
3	9JE	B	202	-	6,6,6	0.19	0	5,5,5	0.27	0
4	BTB	D	210	6	13,13,13	2.13	4 (30%)	7,16,16	2.18	2 (28%)
7	PG4	B	203	-	9,9,12	0.69	0	8,8,11	0.92	0

In the following table, the Chirals column lists the number of chiral outliers, the number of chiral centers analysed, the number of these observed in the model and the number defined in the Chemical Component Dictionary. Similar counts are reported in the Torsion and Rings columns. '-' means no outliers of that kind were identified.

Mol	Type	Chain	Res	Link	Chirals	Torsions	Rings
3	9JE	D	205	-	-	1/4/4/4	-
4	BTB	D	209	2	-	3/21/21/21	-
4	BTB	A	204	2	-	5/21/21/21	-
4	BTB	D	207	2,8	-	2/21/21/21	-
3	9JE	A	202	-	-	0/4/4/4	-
4	BTB	D	208	2,8	-	3/21/21/21	-
3	9JE	A	203	-	-	0/4/4/4	-
7	PG4	D	206	-	-	5/10/10/10	-
5	PRO	A	205	-	-	2/4/11/11	0/1/1/1
5	PRO	B	205	-	-	1/4/11/11	0/1/1/1
3	9JE	B	204	-	-	4/4/4/4	-
3	9JE	B	202	-	-	2/4/4/4	-
4	BTB	D	210	6	-	10/21/21/21	-
7	PG4	B	203	-	-	5/7/7/10	-

All (10) bond length outliers are listed below:

Mol	Chain	Res	Type	Atoms	Z	Observed(Å)	Ideal(Å)
4	D	210	BTB	C1-C2	4.47	1.58	1.53
4	D	210	BTB	C4-C2	3.64	1.57	1.53
4	D	208	BTB	C3-C2	3.27	1.57	1.53

*Continued on next page...*

*Continued from previous page...*

Mol	Chain	Res	Type	Atoms	Z	Observed(Å)	Ideal(Å)
4	D	210	BTB	C2-N	3.11	1.54	1.48
4	D	207	BTB	C3-C2	2.75	1.56	1.53
5	B	205	PRO	OXT-C	-2.38	1.23	1.30
5	A	205	PRO	OXT-C	-2.16	1.23	1.30
4	D	209	BTB	C3-C2	2.10	1.55	1.53
4	D	210	BTB	C7-C8	2.07	1.59	1.51
4	A	204	BTB	C3-C2	2.05	1.55	1.53

All (9) bond angle outliers are listed below:

Mol	Chain	Res	Type	Atoms	Z	Observed(°)	Ideal(°)
4	D	210	BTB	O1-C1-C2	4.45	121.86	111.40
5	A	205	PRO	OXT-C-O	-3.30	116.58	124.08
4	D	208	BTB	O1-C1-C2	-3.04	104.24	111.40
5	B	205	PRO	OXT-C-O	-3.00	117.26	124.08
4	D	210	BTB	C8-C7-N	2.33	120.69	111.59
5	B	205	PRO	OXT-C-CA	2.33	121.39	113.51
4	D	208	BTB	O4-C4-C2	-2.33	105.93	111.40
5	A	205	PRO	OXT-C-CA	2.28	121.21	113.51
4	D	208	BTB	O8-C8-C7	2.04	119.63	111.22

There are no chirality outliers.

All (43) torsion outliers are listed below:

Mol	Chain	Res	Type	Atoms
4	A	204	BTB	O1-C1-C2-C3
4	A	204	BTB	O1-C1-C2-C4
4	A	204	BTB	O1-C1-C2-N
4	D	210	BTB	O1-C1-C2-C4
4	D	210	BTB	C1-C2-C3-O3
4	D	210	BTB	C4-C2-C3-O3
4	D	210	BTB	N-C2-C3-O3
4	D	210	BTB	C1-C2-C4-O4
4	D	210	BTB	C3-C2-C4-O4
4	D	210	BTB	N-C2-C4-O4
4	D	210	BTB	C1-C2-N-C7
5	A	205	PRO	O-C-CA-N
5	A	205	PRO	OXT-C-CA-N
7	B	203	PG4	C6-C5-O3-C4
7	D	206	PG4	O2-C3-C4-O3
4	D	208	BTB	N-C7-C8-O8
4	A	204	BTB	N-C7-C8-O8

*Continued on next page...*

*Continued from previous page...*

Mol	Chain	Res	Type	Atoms
4	D	207	BTB	N-C7-C8-O8
4	D	209	BTB	C3-C2-C4-O4
3	B	204	9JE	C02-C03-C04-C05
3	B	202	9JE	O01-C02-C03-C04
7	B	203	PG4	O2-C3-C4-O3
3	B	204	9JE	O01-C02-C03-C04
7	B	203	PG4	O3-C5-C6-O4
3	B	204	9JE	C04-C05-C06-O07
4	D	207	BTB	C4-C2-C3-O3
4	D	210	BTB	N-C5-C6-O6
4	D	208	BTB	N-C5-C6-O6
7	D	206	PG4	C4-C3-O2-C2
7	D	206	PG4	C8-C7-O4-C6
4	D	208	BTB	C3-C2-C4-O4
7	D	206	PG4	C6-C5-O3-C4
4	D	210	BTB	C3-C2-N-C7
3	B	204	9JE	C03-C04-C05-C06
7	B	203	PG4	C8-C7-O4-C6
4	D	209	BTB	N-C7-C8-O8
7	B	203	PG4	C5-C6-O4-C7
3	B	202	9JE	C04-C05-C06-O07
7	D	206	PG4	O1-C1-C2-O2
5	B	205	PRO	OXT-C-CA-N
4	A	204	BTB	C4-C2-C3-O3
4	D	209	BTB	N-C5-C6-O6
3	D	205	9JE	C02-C03-C04-C05

There are no ring outliers.

6 monomers are involved in 7 short contacts:

Mol	Chain	Res	Type	Clashes	Symm-Clashes
3	D	205	9JE	1	0
4	D	209	BTB	1	0
4	D	208	BTB	1	0
5	B	205	PRO	1	0
4	D	210	BTB	0	2
7	B	203	PG4	1	0

## 5.7 Other polymers [\(i\)](#)

There are no such residues in this entry.



## 5.8 Polymer linkage issues

There are no chain breaks in this entry.

## 6 Fit of model and data

### 6.1 Protein, DNA and RNA chains

In the following table, the column labelled ‘#RSRZ > 2’ contains the number (and percentage) of RSRZ outliers, followed by percent RSRZ outliers for the chain as percentile scores relative to all X-ray entries and entries of similar resolution. The OWAB column contains the minimum, median, 95<sup>th</sup> percentile and maximum values of the occupancy-weighted average B-factor per residue. The column labelled ‘Q < 0.9’ lists the number of (and percentage) of residues with an average occupancy less than 0.9.

Mol	Chain	Analysed	<RSRZ>	#RSRZ>2	OWAB(Å <sup>2</sup> )	Q<0.9
1	A	59/67 (88%)	0.36	8 (13%) <span style="border: 1px solid red; padding: 2px;">8</span> <span style="border: 1px solid red; padding: 2px;">7</span>	6, 20, 49, 59	2 (3%)
1	B	58/67 (86%)	0.60	9 (15%) <span style="border: 1px solid red; padding: 2px;">6</span> <span style="border: 1px solid red; padding: 2px;">5</span>	7, 20, 50, 63	4 (6%)
1	C	62/67 (92%)	0.49	4 (6%) <span style="border: 1px solid red; padding: 2px;">26</span> <span style="border: 1px solid red; padding: 2px;">25</span>	8, 20, 43, 55	8 (12%)
1	D	62/67 (92%)	-0.07	0 <span style="border: 1px solid blue; padding: 2px;">100</span> <span style="border: 1px solid blue; padding: 2px;">100</span>	5, 16, 30, 40	5 (8%)
All	All	241/268 (89%)	0.34	21 (8%) <span style="border: 1px solid red; padding: 2px;">17</span> <span style="border: 1px solid red; padding: 2px;">16</span>	5, 19, 47, 63	19 (7%)

All (21) RSRZ outliers are listed below:

Mol	Chain	Res	Type	RSRZ
1	B	103	LEU	4.7
1	B	104	VAL	4.2
1	B	49	TRP	3.8
1	C	110	VAL	3.7
1	A	49	TRP	3.1
1	A	104	VAL	3.1
1	C	101	ARG	3.1
1	B	101	ARG	3.0
1	A	107	LEU	3.0
1	A	48	SER	2.5
1	A	67	GLN	2.5
1	A	55	ARG	2.4
1	A	66	ARG	2.4
1	A	105	GLU	2.4
1	C	92	PHE	2.4
1	C	87	ARG	2.3
1	B	60	GLU	2.3
1	B	106	GLU	2.3
1	B	48	SER	2.2
1	B	102	LYS	2.1
1	B	98	GLN	2.1

## 6.2 Non-standard residues in protein, DNA, RNA chains [i](#)

There are no non-standard protein/DNA/RNA residues in this entry.

## 6.3 Carbohydrates [i](#)

There are no monosaccharides in this entry.

## 6.4 Ligands [i](#)

In the following table, the Atoms column lists the number of modelled atoms in the group and the number defined in the chemical component dictionary. The B-factors column lists the minimum, median, 95<sup>th</sup> percentile and maximum values of B factors of atoms in the group. The column labelled 'Q< 0.9' lists the number of atoms with occupancy less than 0.9.

Mol	Type	Chain	Res	Atoms	RSCC	RSR	B-factors( $\text{\AA}^2$ )	Q<0.9
5	PRO	A	205	8/8	0.64	0.23	63,65,73,74	0
4	BTB	D	210	14/14	0.65	0.20	55,60,70,74	0
3	9JE	B	204	7/7	0.78	0.20	39,40,43,45	0
7	PG4	B	203	10/13	0.80	0.14	44,46,48,49	0
3	9JE	A	202	7/7	0.82	0.23	33,36,41,41	7
3	9JE	B	202	7/7	0.84	0.14	38,40,42,43	0
5	PRO	B	205	8/8	0.85	0.19	58,59,64,66	8
7	PG4	D	206	13/13	0.86	0.13	32,42,47,49	0
3	9JE	D	205	7/7	0.88	0.10	33,35,42,45	0
3	9JE	A	203	7/7	0.90	0.10	28,33,36,41	0
4	BTB	A	204	14/14	0.91	0.09	23,26,31,37	0
4	BTB	D	208	14/14	0.95	0.08	12,15,25,25	0
6	YT3	B	201	1/1	0.95	0.10	69,69,69,69	0
4	BTB	D	207	14/14	0.96	0.06	6,11,15,16	0
4	BTB	D	209	14/14	0.96	0.06	10,13,17,23	0
6	YT3	D	204	1/1	0.99	0.04	38,38,38,38	0
2	TB	D	201	1/1	1.00	0.01	12,12,12,12	0
2	TB	D	202	1/1	1.00	0.00	11,11,11,11	0
2	TB	A	201	1/1	1.00	0.04	27,27,27,27	0
8	ER3	D	203	1/1	1.00	0.01	13,13,13,13	0

## 6.5 Other polymers [i](#)

There are no such residues in this entry.