



# Full wwPDB X-ray Structure Validation Report ⓘ

May 29, 2020 – 03:54 pm BST

PDB ID : 1U9E  
Title : CRYSTAL STRUCTURE OF ESTROGEN RECEPTOR BETA COM-  
PLEXED WITH WAY-397  
Authors : Manas, E.S.; Unwalla, R.J.; Xu, Z.B.; Malamas, M.S.; Miller, C.P.; Harris,  
H.A.; Hsiao, C.; Akopian, T.; Hum, W.T.; Malakian, K.; Wolfrom, S.; Bapat,  
A.; Bhat, R.A.; Stahl, M.L.; Somers, W.S.; Alvarez, J.C.  
Deposited on : 2004-08-09  
Resolution : 2.40 Å(reported)

This is a Full wwPDB X-ray Structure Validation Report for a publicly released PDB entry.

We welcome your comments at [validation@mail.wwpdb.org](mailto:validation@mail.wwpdb.org)

A user guide is available at

<https://www.wwpdb.org/validation/2017/XrayValidationReportHelp>

with specific help available everywhere you see the ⓘ symbol.

---

The following versions of software and data (see [references ⓘ](#)) were used in the production of this report:

MolProbity : 4.02b-467  
Mogul : 1.8.5 (274361), CSD as541be (2020)  
Xtriage (Phenix) : **NOT EXECUTED**  
EDS : **NOT EXECUTED**  
Percentile statistics : 20191225.v01 (using entries in the PDB archive December 25th 2019)  
Ideal geometry (proteins) : Engh & Huber (2001)  
Ideal geometry (DNA, RNA) : Parkinson et al. (1996)  
Validation Pipeline (wwPDB-VP) : 2.11

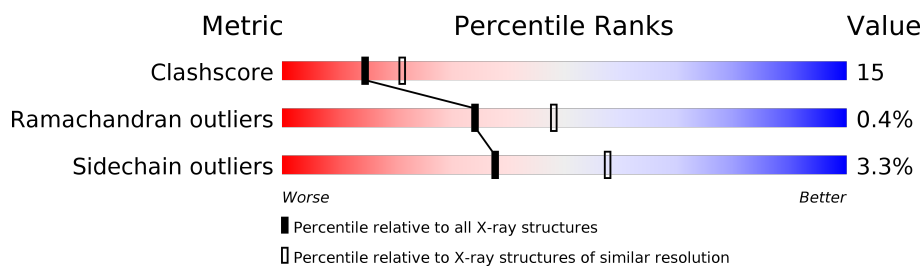
# 1 Overall quality at a glance i

The following experimental techniques were used to determine the structure:

*X-RAY DIFFRACTION*

The reported resolution of this entry is 2.40 Å.

Percentile scores (ranging between 0-100) for global validation metrics of the entry are shown in the following graphic. The table shows the number of entries on which the scores are based.



Metric	Whole archive (#Entries)	Similar resolution (#Entries, resolution range(Å))
Clashscore	141614	4398 (2.40-2.40)
Ramachandran outliers	138981	4318 (2.40-2.40)
Sidechain outliers	138945	4319 (2.40-2.40)

The table below summarises the geometric issues observed across the polymeric chains and their fit to the electron density. The red, orange, yellow and green segments on the lower bar indicate the fraction of residues that contain outliers for  $\geq 3$ , 2, 1 and 0 types of geometric quality criteria respectively. A grey segment represents the fraction of residues that are not modelled. The numeric value for each fraction is indicated below the corresponding segment, with a dot representing fractions  $\leq 5\%$ .

Note EDS was not executed.

Mol	Chain	Length	Quality of chain
1	A	241	
1	B	241	
2	C	9	
2	D	9	

## 2 Entry composition [i](#)

There are 4 unique types of molecules in this entry. The entry contains 3848 atoms, of which 0 are hydrogens and 0 are deuteriums.

In the tables below, the ZeroOcc column contains the number of atoms modelled with zero occupancy, the AltConf column contains the number of residues with at least one atom in alternate conformation and the Trace column contains the number of residues modelled with at most 2 atoms.

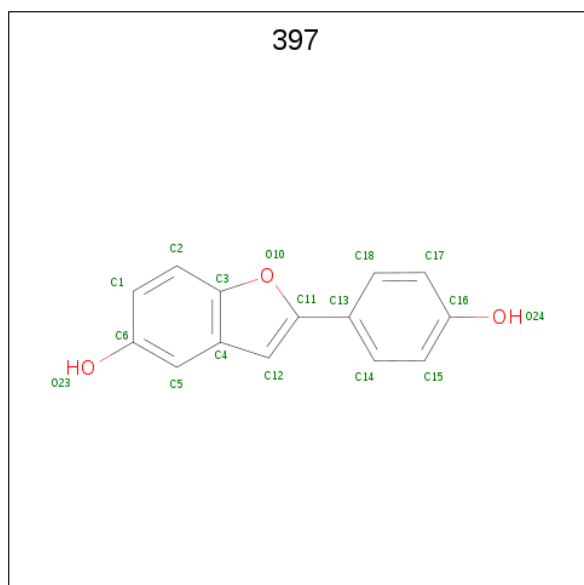
- Molecule 1 is a protein called Estrogen receptor beta.

Mol	Chain	Residues	Atoms					ZeroOcc	AltConf	Trace
			Total	C	N	O	S			
1	A	223	Total 1760	C 1132	N 297	O 312	S 19	0	0	0
1	B	228	Total 1805	C 1160	N 307	O 318	S 20	0	0	0

- Molecule 2 is a protein called STEROID RECEPTOR COACTIVATOR-1.

Mol	Chain	Residues	Atoms				ZeroOcc	AltConf	Trace
			Total	C	N	O			
2	C	9	Total 71	C 46	N 11	O 14	0	0	0
2	D	9	Total 71	C 46	N 11	O 14	0	0	0

- Molecule 3 is 2-(4-HYDROXY-PHENYL)BENZOFURAN-5-OL (three-letter code: 397) (formula: C<sub>14</sub>H<sub>10</sub>O<sub>3</sub>).



Mol	Chain	Residues	Atoms			ZeroOcc	AltConf
3	A	1	Total	C	O	0	0
			17	14	3		
3	B	1	Total	C	O	0	0
			17	14	3		

- Molecule 4 is water.

Mol	Chain	Residues	Atoms		ZeroOcc	AltConf
4	A	52	Total	O	0	0
			52	52		
4	B	49	Total	O	0	0
			49	49		
4	C	2	Total	O	0	0
			2	2		
4	D	4	Total	O	0	0
			4	4		

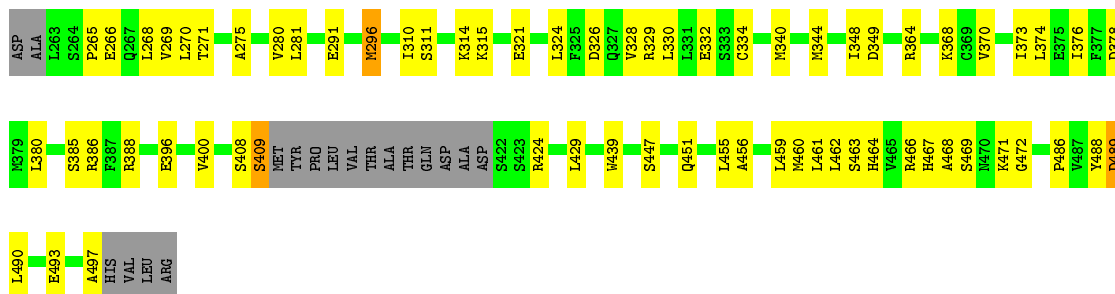
### 3 Residue-property plots [i](#)

These plots are drawn for all protein, RNA and DNA chains in the entry. The first graphic for a chain summarises the proportions of the various outlier classes displayed in the second graphic. The second graphic shows the sequence view annotated by issues in geometry. Residues are color-coded according to the number of geometric quality criteria for which they contain at least one outlier: green = 0, yellow = 1, orange = 2 and red = 3 or more. Stretches of 2 or more consecutive residues without any outlier are shown as a green connector. Residues present in the sample, but not in the model, are shown in grey.

Note EDS was not executed.

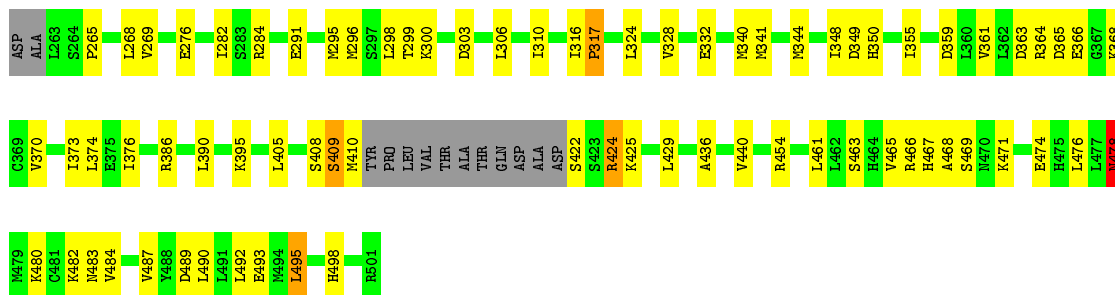
- Molecule 1: Estrogen receptor beta

Chain A: 




- Molecule 1: Estrogen receptor beta

Chain B: 



- Molecule 2: STEROID RECEPTOR COACTIVATOR-1

Chain C: 



- Molecule 2: STEROID RECEPTOR COACTIVATOR-1

Chain D: 



## 4 Data and refinement statistics

Xtrriage (Phenix) and EDS were not executed - this section is therefore incomplete.

Property	Value	Source
Space group	P 21 21 21	Depositor
Cell constants a, b, c, $\alpha$ , $\beta$ , $\gamma$	52.11Å 87.94Å 99.52Å 90.00° 90.00° 90.00°	Depositor
Resolution (Å)	19.85 – 2.40	Depositor
% Data completeness (in resolution range)	99.1 (19.85-2.40)	Depositor
$R_{merge}$	0.08	Depositor
$R_{sym}$	0.08	Depositor
Refinement program	CNS 1.1	Depositor
R, $R_{free}$	0.231 , 0.279	Depositor
Estimated twinning fraction	No twinning to report.	Xtrriage
Total number of atoms	3848	wwPDB-VP
Average B, all atoms (Å <sup>2</sup> )	30.0	wwPDB-VP

## 5 Model quality [i](#)

### 5.1 Standard geometry [i](#)

Bond lengths and bond angles in the following residue types are not validated in this section: 397

The Z score for a bond length (or angle) is the number of standard deviations the observed value is removed from the expected value. A bond length (or angle) with  $|Z| > 5$  is considered an outlier worth inspection. RMSZ is the root-mean-square of all Z scores of the bond lengths (or angles).

Mol	Chain	Bond lengths		Bond angles	
		RMSZ	# Z  >5	RMSZ	# Z  >5
1	A	0.28	0/1791	0.49	0/2417
1	B	0.34	0/1837	0.54	2/2477 (0.1%)
2	C	0.39	0/70	0.59	0/93
2	D	0.38	0/70	0.64	0/93
All	All	0.32	0/3768	0.52	2/5080 (0.0%)

There are no bond length outliers.

All (2) bond angle outliers are listed below:

Mol	Chain	Res	Type	Atoms	Z	Observed(°)	Ideal(°)
1	B	478	ASN	CB-CG-ND2	-5.72	102.97	116.70
1	B	478	ASN	CB-CG-OD1	5.01	131.63	121.60

There are no chirality outliers.

There are no planarity outliers.

### 5.2 Too-close contacts [i](#)

In the following table, the Non-H and H(model) columns list the number of non-hydrogen atoms and hydrogen atoms in the chain respectively. The H(added) column lists the number of hydrogen atoms added and optimized by MolProbity. The Clashes column lists the number of clashes within the asymmetric unit, whereas Symm-Clashes lists symmetry related clashes.

Mol	Chain	Non-H	H(model)	H(added)	Clashes	Symm-Clashes
1	A	1760	0	1842	54	0
1	B	1805	0	1891	69	0
2	C	71	0	83	2	0
2	D	71	0	83	2	0
3	A	17	0	10	0	0

*Continued on next page...*



*Continued from previous page...*

Mol	Chain	Non-H	H(model)	H(added)	Clashes	Symm-Clashes
3	B	17	0	10	0	0
4	A	52	0	0	3	0
4	B	49	0	0	7	0
4	C	2	0	0	0	0
4	D	4	0	0	0	0
All	All	3848	0	3919	117	0

The all-atom clashscore is defined as the number of clashes found per 1000 atoms (including hydrogen atoms). The all-atom clashscore for this structure is 15.

All (117) close contacts within the same asymmetric unit are listed below, sorted by their clash magnitude.

Atom-1	Atom-2	Interatomic distance (Å)	Clash overlap (Å)
1:A:329:ARG:HH12	1:A:409:SER:HB3	1.42	0.84
1:B:482:LYS:HB3	1:B:484:VAL:HG23	1.60	0.82
1:A:340:MET:HE1	1:A:469:SER:N	1.98	0.78
1:B:340:MET:HE1	1:B:469:SER:N	1.99	0.77
1:A:463:SER:HA	4:B:89:HOH:O	1.85	0.77
1:B:303:ASP:OD1	1:B:490:LEU:HB3	1.91	0.70
1:A:386:ARG:NH1	1:A:461:LEU:HD21	2.09	0.67
1:B:409:SER:HB2	4:B:27:HOH:O	1.94	0.66
1:B:363:ASP:HB3	1:B:365:ASP:OD2	1.96	0.66
1:A:467:HIS:HB2	1:B:466:ARG:NH1	2.11	0.65
1:A:386:ARG:HH11	1:A:461:LEU:HD21	1.60	0.65
1:B:480:LYS:HB2	1:B:487:VAL:HG21	1.78	0.65
1:A:386:ARG:HG2	1:A:461:LEU:HD21	1.80	0.64
1:B:425:LYS:O	1:B:429:LEU:HD13	1.97	0.63
1:B:340:MET:O	1:B:344:MET:HG3	1.99	0.62
1:A:467:HIS:HB2	1:B:466:ARG:HH11	1.66	0.61
1:B:408:SER:C	1:B:410:MET:H	2.03	0.61
1:B:284:ARG:NH1	1:B:366:GLU:OE2	2.33	0.60
1:B:265:PRO:HB3	1:B:436:ALA:HA	1.82	0.60
1:A:329:ARG:HH12	1:A:409:SER:CB	2.14	0.60
1:A:486:PRO:HG2	1:A:488:TYR:CE1	2.37	0.59
1:A:466:ARG:NH1	1:B:467:HIS:HB2	2.18	0.59
1:A:291:GLU:HG3	1:A:370:VAL:HG22	1.86	0.58
1:B:463:SER:HA	4:B:89:HOH:O	2.03	0.57
1:A:400:VAL:HG13	1:A:462:LEU:HD21	1.85	0.57
1:B:480:LYS:HE2	1:B:492:LEU:HD13	1.86	0.57
1:B:328:VAL:O	1:B:332:GLU:HG3	2.05	0.57
1:A:296:MET:HB2	4:A:69:HOH:O	2.05	0.56

*Continued on next page...*

*Continued from previous page...*

Atom-1	Atom-2	Interatomic distance (Å)	Clash overlap (Å)
1:B:282:ILE:HD12	4:B:50:HOH:O	2.04	0.55
1:B:291:GLU:HG3	1:B:370:VAL:HA	1.88	0.55
1:A:340:MET:HE1	1:A:469:SER:CA	2.37	0.55
2:D:608:GLN:O	2:D:612:THR:HB	2.07	0.54
1:A:396:GLU:O	1:A:400:VAL:HG23	2.08	0.54
1:B:316:ILE:HD12	1:B:405:LEU:HD23	1.90	0.53
1:A:400:VAL:CG1	1:A:462:LEU:HD21	2.39	0.52
1:B:480:LYS:HE2	1:B:492:LEU:CD1	2.40	0.52
1:B:295:MET:HE1	1:B:298:LEU:HD12	1.90	0.52
1:B:482:LYS:O	1:B:483:ASN:HB2	2.09	0.52
1:A:489:ASP:HB3	2:C:605:LYS:CE	2.40	0.52
1:A:340:MET:HE1	1:A:468:ALA:C	2.30	0.52
1:B:373:ILE:HA	1:B:376:ILE:HD12	1.92	0.52
1:B:493:GLU:OE2	2:D:605:LYS:HB3	2.10	0.51
1:B:365:ASP:O	1:B:368:LYS:HG2	2.09	0.51
1:A:376:ILE:O	1:A:380:LEU:HG	2.09	0.51
1:B:340:MET:HE1	1:B:469:SER:CA	2.40	0.51
1:A:265:PRO:O	1:A:269:VAL:HG23	2.10	0.50
1:B:390:LEU:O	1:B:454:ARG:NH2	2.36	0.50
1:B:422:SER:N	4:B:25:HOH:O	2.44	0.50
1:B:370:VAL:HB	1:B:373:ILE:CG2	2.41	0.50
1:A:266:GLU:O	1:A:270:LEU:HD13	2.12	0.49
1:B:355:ILE:HD12	1:B:361:VAL:HG22	1.93	0.49
1:A:329:ARG:NH1	1:A:409:SER:HB3	2.20	0.49
1:A:268:LEU:O	1:A:271:THR:HG22	2.13	0.49
1:B:348:ILE:HG23	1:B:349:ASP:N	2.27	0.49
1:A:281:LEU:N	1:A:281:LEU:HD12	2.29	0.48
1:B:316:ILE:CD1	1:B:405:LEU:HD23	2.43	0.48
1:A:324:LEU:HD13	1:A:324:LEU:O	2.13	0.48
1:A:328:VAL:O	1:A:332:GLU:HG3	2.13	0.48
1:B:471:LYS:NZ	1:B:471:LYS:HB3	2.28	0.48
1:A:368:LYS:HG2	1:A:374:LEU:HD22	1.95	0.48
1:B:364:ARG:HD3	1:B:364:ARG:C	2.35	0.47
1:B:364:ARG:O	1:B:364:ARG:HD3	2.14	0.47
1:A:310:ILE:O	1:A:314:LYS:HG3	2.14	0.47
1:B:368:LYS:HD3	1:B:374:LEU:HD13	1.97	0.47
1:A:455:LEU:O	1:A:459:LEU:HG	2.14	0.47
1:B:480:LYS:HB2	1:B:487:VAL:CG2	2.44	0.47
1:A:266:GLU:HB2	1:A:439:TRP:CZ2	2.50	0.47
1:B:265:PRO:O	1:B:269:VAL:HG23	2.14	0.47
1:A:456:ALA:O	1:A:460:MET:HG3	2.15	0.46

*Continued on next page...*

*Continued from previous page...*

Atom-1	Atom-2	Interatomic distance (Å)	Clash overlap (Å)
1:A:275:ALA:HA	1:A:315:LYS:HD2	1.96	0.46
1:A:280:VAL:C	1:A:281:LEU:HD12	2.35	0.46
1:B:365:ASP:OD2	1:B:366:GLU:N	2.48	0.46
1:A:268:LEU:O	1:A:271:THR:CG2	2.63	0.46
1:B:306:LEU:O	1:B:310:ILE:HG12	2.15	0.46
1:B:471:LYS:HA	1:B:474:GLU:OE1	2.16	0.46
1:B:364:ARG:CZ	1:B:374:LEU:HD11	2.46	0.46
1:A:334:CYS:HB3	1:A:408:SER:OG	2.17	0.45
1:A:376:ILE:HD13	1:A:472:GLY:HA2	1.98	0.45
1:B:424:ARG:NE	4:B:25:HOH:O	2.50	0.45
1:B:478:ASN:HA	1:B:478:ASN:HD22	1.04	0.45
1:B:370:VAL:HB	1:B:373:ILE:HG21	1.98	0.44
1:A:467:HIS:O	1:A:471:LYS:HG2	2.17	0.44
1:B:461:LEU:O	1:B:465:VAL:HG23	2.17	0.44
1:A:364:ARG:HB2	4:A:79:HOH:O	2.18	0.44
1:B:268:LEU:CD1	1:B:317:PRO:HG2	2.47	0.44
1:A:386:ARG:HG2	1:A:386:ARG:HH11	1.81	0.44
1:A:311:SER:HB2	4:A:42:HOH:O	2.17	0.43
1:A:466:ARG:HH12	1:B:467:HIS:HB2	1.82	0.43
1:A:364:ARG:HD2	1:A:378:ASP:OD1	2.17	0.43
1:A:467:HIS:HB3	1:B:410:MET:HE1	2.01	0.43
1:B:476:LEU:HG	1:B:495:LEU:HD11	2.01	0.43
1:B:340:MET:HE1	1:B:468:ALA:C	2.39	0.43
1:B:436:ALA:O	1:B:440:VAL:HG23	2.19	0.43
1:A:464:HIS:HA	1:B:410:MET:SD	2.59	0.43
1:B:359:ASP:CG	1:B:359:ASP:O	2.56	0.43
1:A:385:SER:HA	1:A:388:ARG:NH1	2.34	0.42
1:A:463:SER:HB3	1:B:466:ARG:NH2	2.33	0.42
1:B:341:MET:HA	1:B:344:MET:HE3	2.00	0.42
1:A:334:CYS:HB3	1:A:408:SER:CB	2.48	0.42
1:B:296:MET:CE	1:B:300:LYS:HE2	2.49	0.42
1:B:350:HIS:HD2	4:B:38:HOH:O	2.02	0.42
1:B:408:SER:C	1:B:410:MET:N	2.70	0.42
1:B:295:MET:CE	1:B:298:LEU:HD12	2.50	0.42
1:B:408:SER:O	1:B:410:MET:N	2.51	0.42
1:B:269:VAL:CG1	1:B:395:LYS:HG3	2.50	0.42
1:A:326:ASP:O	1:A:330:LEU:HG	2.21	0.41
1:B:386:ARG:HG2	1:B:461:LEU:HD21	2.02	0.41
1:A:344:MET:HB2	1:A:344:MET:HE3	1.82	0.41
1:B:368:LYS:CD	1:B:374:LEU:HD22	2.49	0.41
1:A:493:GLU:OE1	2:C:605:LYS:HB2	2.20	0.41

*Continued on next page...*

Continued from previous page...

Atom-1	Atom-2	Interatomic distance (Å)	Clash overlap (Å)
1:A:348:ILE:HG23	1:A:349:ASP:N	2.35	0.41
1:A:447:SER:O	1:A:451:GLN:HG3	2.21	0.41
1:A:332:GLU:HB3	1:A:497:ALA:O	2.21	0.40
1:B:295:MET:O	1:B:299:THR:OG1	2.36	0.40
1:B:269:VAL:HG11	1:B:395:LYS:HG3	2.03	0.40
1:B:324:LEU:HG	1:B:324:LEU:O	2.21	0.40
1:B:348:ILE:CG2	1:B:349:ASP:N	2.85	0.40

There are no symmetry-related clashes.

### 5.3 Torsion angles [i](#)

#### 5.3.1 Protein backbone [i](#)

In the following table, the Percentiles column shows the percent Ramachandran outliers of the chain as a percentile score with respect to all X-ray entries followed by that with respect to entries of similar resolution.

The Analysed column shows the number of residues for which the backbone conformation was analysed, and the total number of residues.

Mol	Chain	Analysed	Favoured	Allowed	Outliers	Percentiles	
1	A	219/241 (91%)	211 (96%)	8 (4%)	0	100	100
1	B	224/241 (93%)	216 (96%)	6 (3%)	2 (1%)	17	25
2	C	7/9 (78%)	7 (100%)	0	0	100	100
2	D	7/9 (78%)	7 (100%)	0	0	100	100
All	All	457/500 (91%)	441 (96%)	14 (3%)	2 (0%)	34	48

All (2) Ramachandran outliers are listed below:

Mol	Chain	Res	Type
1	B	409	SER
1	B	317	PRO

#### 5.3.2 Protein sidechains [i](#)

In the following table, the Percentiles column shows the percent sidechain outliers of the chain as a percentile score with respect to all X-ray entries followed by that with respect to entries of similar resolution.

The Analysed column shows the number of residues for which the sidechain conformation was analysed, and the total number of residues.

Mol	Chain	Analysed	Rotameric	Outliers	Percentiles	
1	A	201/216 (93%)	193 (96%)	8 (4%)	31	49
1	B	206/216 (95%)	200 (97%)	6 (3%)	42	62
2	C	9/9 (100%)	9 (100%)	0	100	100
2	D	9/9 (100%)	9 (100%)	0	100	100
All	All	425/450 (94%)	411 (97%)	14 (3%)	38	57

All (14) residues with a non-rotameric sidechain are listed below:

Mol	Chain	Res	Type
1	A	296	MET
1	A	321	GLU
1	A	373	ILE
1	A	409	SER
1	A	424	ARG
1	A	429	LEU
1	A	489	ASP
1	A	490	LEU
1	B	276	GLU
1	B	424	ARG
1	B	478	ASN
1	B	489	ASP
1	B	495	LEU
1	B	498	HIS

Some sidechains can be flipped to improve hydrogen bonding and reduce clashes. All (10) such sidechains are listed below:

Mol	Chain	Res	Type
1	A	407	ASN
1	A	449	GLN
1	A	470	ASN
1	B	279	HIS
1	B	308	HIS
1	B	407	ASN
1	B	478	ASN
1	B	483	ASN
1	B	496	ASN
1	B	498	HIS

### 5.3.3 RNA [i](#)

There are no RNA molecules in this entry.

## 5.4 Non-standard residues in protein, DNA, RNA chains [i](#)

There are no non-standard protein/DNA/RNA residues in this entry.

## 5.5 Carbohydrates [i](#)

There are no carbohydrates in this entry.

## 5.6 Ligand geometry [i](#)

2 ligands are modelled in this entry.

In the following table, the Counts columns list the number of bonds (or angles) for which Mogul statistics could be retrieved, the number of bonds (or angles) that are observed in the model and the number of bonds (or angles) that are defined in the Chemical Component Dictionary. The Link column lists molecule types, if any, to which the group is linked. The Z score for a bond length (or angle) is the number of standard deviations the observed value is removed from the expected value. A bond length (or angle) with  $|Z| > 2$  is considered an outlier worth inspection. RMSZ is the root-mean-square of all Z scores of the bond lengths (or angles).

Mol	Type	Chain	Res	Link	Bond lengths			Bond angles		
					Counts	RMSZ	# Z  > 2	Counts	RMSZ	# Z  > 2
3	397	B	202	-	15,19,19	1.89	5 (33%)	18,27,27	0.88	0
3	397	A	201	-	15,19,19	1.88	5 (33%)	18,27,27	0.87	0

In the following table, the Chirals column lists the number of chiral outliers, the number of chiral centers analysed, the number of these observed in the model and the number defined in the Chemical Component Dictionary. Similar counts are reported in the Torsion and Rings columns. '-' means no outliers of that kind were identified.

Mol	Type	Chain	Res	Link	Chirals	Torsions	Rings
3	397	B	202	-	-	0/2/4/4	0/3/3/3
3	397	A	201	-	-	0/2/4/4	0/3/3/3

All (10) bond length outliers are listed below:

Mol	Chain	Res	Type	Atoms	Z	Observed(Å)	Ideal(Å)
3	A	201	397	C2-C1	2.92	1.42	1.36

*Continued on next page...*

*Continued from previous page...*

Mol	Chain	Res	Type	Atoms	Z	Observed(Å)	Ideal(Å)
3	B	202	397	C5-C6	2.90	1.42	1.37
3	B	202	397	C2-C1	2.88	1.42	1.36
3	A	201	397	C5-C6	2.80	1.42	1.37
3	A	201	397	C18-C13	2.77	1.45	1.39
3	A	201	397	C14-C13	2.69	1.45	1.39
3	B	202	397	C14-C13	2.65	1.45	1.39
3	B	202	397	C18-C13	2.62	1.44	1.39
3	B	202	397	C13-C11	-2.58	1.41	1.46
3	A	201	397	C13-C11	-2.46	1.42	1.46

There are no bond angle outliers.

There are no chirality outliers.

There are no torsion outliers.

There are no ring outliers.

No monomer is involved in short contacts.

## 5.7 Other polymers [i](#)

There are no such residues in this entry.

## 5.8 Polymer linkage issues [i](#)

There are no chain breaks in this entry.

## 6 Fit of model and data

### 6.1 Protein, DNA and RNA chains

EDS was not executed - this section is therefore empty.

### 6.2 Non-standard residues in protein, DNA, RNA chains

EDS was not executed - this section is therefore empty.

### 6.3 Carbohydrates

EDS was not executed - this section is therefore empty.

### 6.4 Ligands

EDS was not executed - this section is therefore empty.

### 6.5 Other polymers

EDS was not executed - this section is therefore empty.