



Full wwPDB X-ray Structure Validation Report ⓘ

Sep 17, 2023 – 08:12 AM EDT

PDB ID : 4U9J
Title : Crystal structure of an H-NOX protein from *S. oneidensis* in the Mn(II) ligation state, Q154A/Q155A/K156A mutant
Authors : Herzik Jr., M.A.; Jonnalagadda, R.; Kuriyan, J.; Marletta, M.A.
Deposited on : 2014-08-06
Resolution : 2.10 Å(reported)

This is a Full wwPDB X-ray Structure Validation Report for a publicly released PDB entry.

We welcome your comments at validation@mail.wwpdb.org

A user guide is available at

<https://www.wwpdb.org/validation/2017/XrayValidationReportHelp>

with specific help available everywhere you see the ⓘ symbol.

The types of validation reports are described at

<http://www.wwpdb.org/validation/2017/FAQs#types>.

The following versions of software and data (see [references ⓘ](#)) were used in the production of this report:

MolProbity : 4.02b-467
Mogul : 1.8.5 (274361), CSD as541be (2020)
Xtriage (Phenix) : 1.13
EDS : 2.35.1
buster-report : 1.1.7 (2018)
Percentile statistics : 20191225.v01 (using entries in the PDB archive December 25th 2019)
Refmac : 5.8.0158
CCP4 : 7.0.044 (Gargrove)
Ideal geometry (proteins) : Engh & Huber (2001)
Ideal geometry (DNA, RNA) : Parkinson et al. (1996)
Validation Pipeline (wwPDB-VP) : 2.35.1

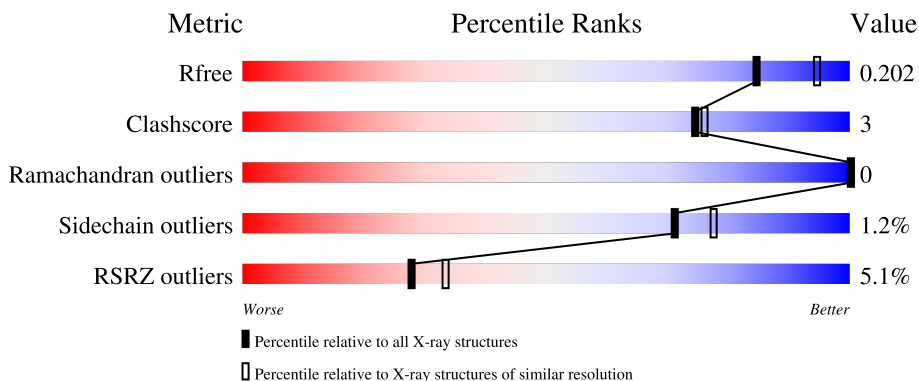
1 Overall quality at a glance i

The following experimental techniques were used to determine the structure:

X-RAY DIFFRACTION

The reported resolution of this entry is 2.10 Å.

Percentile scores (ranging between 0-100) for global validation metrics of the entry are shown in the following graphic. The table shows the number of entries on which the scores are based.



Metric	Whole archive (#Entries)	Similar resolution (#Entries, resolution range(Å))
R_{free}	130704	5197 (2.10-2.10)
Clashscore	141614	5710 (2.10-2.10)
Ramachandran outliers	138981	5647 (2.10-2.10)
Sidechain outliers	138945	5648 (2.10-2.10)
RSRZ outliers	127900	5083 (2.10-2.10)

The table below summarises the geometric issues observed across the polymeric chains and their fit to the electron density. The red, orange, yellow and green segments of the lower bar indicate the fraction of residues that contain outliers for ≥ 3 , 2, 1 and 0 types of geometric quality criteria respectively. A grey segment represents the fraction of residues that are not modelled. The numeric value for each fraction is indicated below the corresponding segment, with a dot representing fractions $\leq 5\%$. The upper red bar (where present) indicates the fraction of residues that have poor fit to the electron density. The numeric value is given above the bar.

Mol	Chain	Length	Quality of chain
1	A	187	 2% 92% 7% .
1	B	187	 9% 88% 11% ..

2 Entry composition

There are 5 unique types of molecules in this entry. The entry contains 6202 atoms, of which 2972 are hydrogens and 0 are deuteriums.

In the tables below, the ZeroOcc column contains the number of atoms modelled with zero occupancy, the AltConf column contains the number of residues with at least one atom in alternate conformation and the Trace column contains the number of residues modelled with at most 2 atoms.

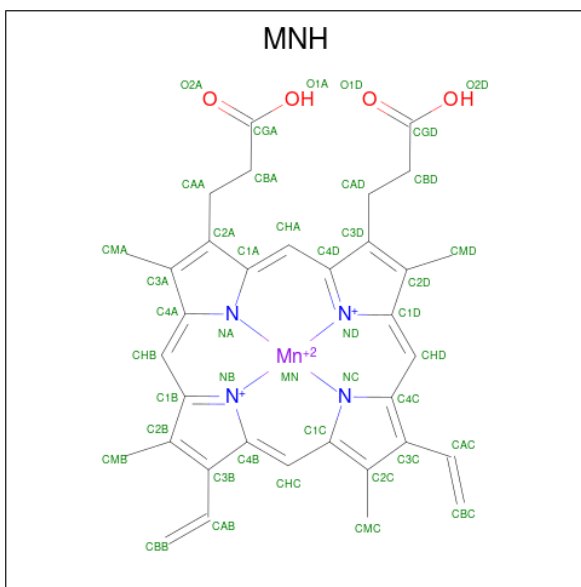
- Molecule 1 is a protein called NO-binding heme-dependent sensor protein.

Mol	Chain	Residues	Atoms						ZeroOcc	AltConf	Trace
			Total	C	H	N	O	S			
1	A	187	2986	959	1477	260	277	13	0	3	0
1	B	186	2902	937	1435	252	266	12	0	0	0

There are 18 discrepancies between the modelled and reference sequences:

Chain	Residue	Modelled	Actual	Comment	Reference
A	154	ALA	GLN	engineered mutation	UNP Q8EF49
A	155	ALA	GLN	engineered mutation	UNP Q8EF49
A	156	ALA	LYS	engineered mutation	UNP Q8EF49
A	182	GLU	-	expression tag	UNP Q8EF49
A	183	ASN	-	expression tag	UNP Q8EF49
A	184	LEU	-	expression tag	UNP Q8EF49
A	185	TYR	-	expression tag	UNP Q8EF49
A	186	PHE	-	expression tag	UNP Q8EF49
A	187	GLN	-	expression tag	UNP Q8EF49
B	154	ALA	GLN	engineered mutation	UNP Q8EF49
B	155	ALA	GLN	engineered mutation	UNP Q8EF49
B	156	ALA	LYS	engineered mutation	UNP Q8EF49
B	182	GLU	-	expression tag	UNP Q8EF49
B	183	ASN	-	expression tag	UNP Q8EF49
B	184	LEU	-	expression tag	UNP Q8EF49
B	185	TYR	-	expression tag	UNP Q8EF49
B	186	PHE	-	expression tag	UNP Q8EF49
B	187	GLN	-	expression tag	UNP Q8EF49

- Molecule 2 is MANGANESE PROTOPORPHYRIN IX (three-letter code: MNH) (formula: $C_{34}H_{32}MnN_4O_4$).



Mol	Chain	Residues	Atoms					ZeroOcc	AltConf	
			Total	C	H	Mn	N			O
2	A	1	73	34	30	1	4	4	0	0
2	B	1	73	34	30	1	4	4	0	0

- Molecule 3 is ZINC ION (three-letter code: ZN) (formula: Zn).

Mol	Chain	Residues	Atoms		ZeroOcc	AltConf
			Total	Zn		
3	A	1	1	1	0	0
3	B	1	1	1	0	0

- Molecule 4 is SODIUM ION (three-letter code: NA) (formula: Na).

Mol	Chain	Residues	Atoms		ZeroOcc	AltConf
			Total	Na		
4	A	1	1	1	0	0

- Molecule 5 is water.

Mol	Chain	Residues	Atoms		ZeroOcc	AltConf
			Total	O		
5	A	98	98	98	0	0
5	B	67	67	67	0	0

3 Residue-property plots [i](#)


These plots are drawn for all protein, RNA, DNA and oligosaccharide chains in the entry. The first graphic for a chain summarises the proportions of the various outlier classes displayed in the second graphic. The second graphic shows the sequence view annotated by issues in geometry and electron density. Residues are color-coded according to the number of geometric quality criteria for which they contain at least one outlier: green = 0, yellow = 1, orange = 2 and red = 3 or more. A red dot above a residue indicates a poor fit to the electron density ($RSRZ > 2$). Stretches of 2 or more consecutive residues without any outlier are shown as a green connector. Residues present in the sample, but not in the model, are shown in grey.

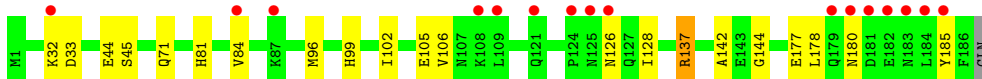
- Molecule 1: NO-binding heme-dependent sensor protein

Chain A: 



- Molecule 1: NO-binding heme-dependent sensor protein

Chain B: 



4 Data and refinement statistics

Property	Value	Source
Space group	P 63 2 2	Depositor
Cell constants a, b, c, α , β , γ	163.80Å 163.80Å 102.08Å 90.00° 90.00° 120.00°	Depositor
Resolution (Å)	48.03 – 2.10 48.03 – 2.10	Depositor EDS
% Data completeness (in resolution range)	96.5 (48.03-2.10) 98.0 (48.03-2.10)	Depositor EDS
R_{merge}	0.03	Depositor
R_{sym}	(Not available)	Depositor
$\langle I/\sigma(I) \rangle$ ¹	1.44 (at 2.10Å)	Xtrriage
Refinement program	PHENIX (phenix.refine: 1.9_1692)	Depositor
R, R_{free}	0.171 , 0.197 0.181 , 0.202	Depositor DCC
R_{free} test set	2359 reflections (5.07%)	wwPDB-VP
Wilson B-factor (Å ²)	41.9	Xtrriage
Anisotropy	0.507	Xtrriage
Bulk solvent k_{sol} (e/Å ³), B_{sol} (Å ²)	0.41 , 47.3	EDS
L-test for twinning ²	$\langle L \rangle = 0.50$, $\langle L^2 \rangle = 0.33$	Xtrriage
Estimated twinning fraction	No twinning to report.	Xtrriage
F_o, F_c correlation	0.97	EDS
Total number of atoms	6202	wwPDB-VP
Average B, all atoms (Å ²)	63.0	wwPDB-VP

Xtrriage's analysis on translational NCS is as follows: *The largest off-origin peak in the Patterson function is 2.57% of the height of the origin peak. No significant pseudotranslation is detected.*

¹Intensities estimated from amplitudes.

²Theoretical values of $\langle |L| \rangle$, $\langle L^2 \rangle$ for acentric reflections are 0.5, 0.333 respectively for untwinned datasets, and 0.375, 0.2 for perfectly twinned datasets.

5 Model quality [i](#)

5.1 Standard geometry [i](#)

Bond lengths and bond angles in the following residue types are not validated in this section: ZN, NA, MNH

The Z score for a bond length (or angle) is the number of standard deviations the observed value is removed from the expected value. A bond length (or angle) with $|Z| > 5$ is considered an outlier worth inspection. RMSZ is the root-mean-square of all Z scores of the bond lengths (or angles).

Mol	Chain	Bond lengths		Bond angles	
		RMSZ	# Z >5	RMSZ	# Z >5
1	A	0.92	2/1542 (0.1%)	0.83	4/2085 (0.2%)
1	B	0.91	2/1500 (0.1%)	0.73	1/2032 (0.0%)
All	All	0.91	4/3042 (0.1%)	0.78	5/4117 (0.1%)

All (4) bond length outliers are listed below:

Mol	Chain	Res	Type	Atoms	Z	Observed(Å)	Ideal(Å)
1	B	185	TYR	CZ-OH	-9.68	1.21	1.37
1	B	44	GLU	CB-CG	-6.36	1.40	1.52
1	A	151	GLN	CG-CD	6.32	1.65	1.51
1	A	133	SER	CB-OG	-5.45	1.35	1.42

All (5) bond angle outliers are listed below:

Mol	Chain	Res	Type	Atoms	Z	Observed(°)	Ideal(°)
1	B	137	ARG	NE-CZ-NH1	6.74	123.67	120.30
1	A	170	ASP	CB-CG-OD1	5.61	123.34	118.30
1	A	181	ASP	CB-CG-OD1	5.54	123.29	118.30
1	A	89	ASP	CB-CG-OD2	-5.16	113.65	118.30
1	A	170	ASP	CB-CG-OD2	-5.08	113.73	118.30

There are no chirality outliers.

There are no planarity outliers.

5.2 Too-close contacts [i](#)

In the following table, the Non-H and H(model) columns list the number of non-hydrogen atoms and hydrogen atoms in the chain respectively. The H(added) column lists the number of hydrogen atoms added and optimized by MolProbity. The Clashes column lists the number of clashes within

the asymmetric unit, whereas Symm-Clashes lists symmetry-related clashes.

Mol	Chain	Non-H	H(model)	H(added)	Clashes	Symm-Clashes
1	A	1509	1477	1474	6	0
1	B	1467	1435	1436	13	0
2	A	43	30	30	0	0
2	B	43	30	30	2	0
3	A	1	0	0	0	0
3	B	1	0	0	0	0
4	A	1	0	0	0	0
5	A	98	0	0	3	0
5	B	67	0	0	5	0
All	All	3230	2972	2970	19	0

The all-atom clashscore is defined as the number of clashes found per 1000 atoms (including hydrogen atoms). The all-atom clashscore for this structure is 3.

All (19) close contacts within the same asymmetric unit are listed below, sorted by their clash magnitude.

Atom-1	Atom-2	Interatomic distance (Å)	Clash overlap (Å)
1:B:45:SER:OG	5:B:330:HOH:O	2.11	0.67
1:B:99:HIS:ND1	5:B:335:HOH:O	2.32	0.58
1:A:4:ILE:CD1	1:A:80[B]:ARG:HG2	2.37	0.55
1:A:44:GLU:OE1	5:A:394:HOH:O	2.18	0.54
1:A:183:ASN:ND2	5:A:377:HOH:O	2.11	0.53
1:B:180:ASN:ND2	5:B:303:HOH:O	2.45	0.49
1:A:158:GLN:HG2	1:A:179:GLN:NE2	2.27	0.49
1:B:84:VAL:HG22	1:B:105:GLU:HG2	1.95	0.49
1:B:180:ASN:CB	5:B:303:HOH:O	2.62	0.48
1:B:96:MET:CE	1:B:128:ILE:HG23	2.44	0.47
1:A:8:VAL:HG11	1:A:73:LEU:HA	1.98	0.45
1:B:142:ALA:HB2	2:B:201:MNH:HMA1	1.99	0.45
1:B:102:ILE:O	1:B:106:VAL:HG23	2.17	0.44
1:A:125:ASN:ND2	5:A:302:HOH:O	2.34	0.44
1:B:126:ASN:HB3	1:B:178:LEU:HB3	2.00	0.43
1:B:81:HIS:CG	2:B:201:MNH:HBC2	2.55	0.42
1:B:71:GLN:HA	1:B:144:GLY:O	2.19	0.41
1:B:180:ASN:CG	5:B:303:HOH:O	2.58	0.41
1:B:32:LYS:O	1:B:33:ASP:HB2	2.21	0.40

There are no symmetry-related clashes.

5.3 Torsion angles [i](#)

5.3.1 Protein backbone [i](#)

In the following table, the Percentiles column shows the percent Ramachandran outliers of the chain as a percentile score with respect to all X-ray entries followed by that with respect to entries of similar resolution.

The Analysed column shows the number of residues for which the backbone conformation was analysed, and the total number of residues.

Mol	Chain	Analysed	Favoured	Allowed	Outliers	Percentiles	
1	A	188/187 (100%)	184 (98%)	4 (2%)	0	100	100
1	B	184/187 (98%)	176 (96%)	8 (4%)	0	100	100
All	All	372/374 (100%)	360 (97%)	12 (3%)	0	100	100

There are no Ramachandran outliers to report.

5.3.2 Protein sidechains [i](#)

In the following table, the Percentiles column shows the percent sidechain outliers of the chain as a percentile score with respect to all X-ray entries followed by that with respect to entries of similar resolution.

The Analysed column shows the number of residues for which the sidechain conformation was analysed, and the total number of residues.

Mol	Chain	Analysed	Rotameric	Outliers	Percentiles	
1	A	166/163 (102%)	164 (99%)	2 (1%)	71	77
1	B	160/163 (98%)	158 (99%)	2 (1%)	69	75
All	All	326/326 (100%)	322 (99%)	4 (1%)	71	77

All (4) residues with a non-rotameric sidechain are listed below:

Mol	Chain	Res	Type
1	A	133	SER
1	A	184	LEU
1	B	137	ARG
1	B	177	GLU

Sometimes sidechains can be flipped to improve hydrogen bonding and reduce clashes. All (1) such sidechains are listed below:

Mol	Chain	Res	Type
1	A	179	GLN

5.3.3 RNA [i](#)

There are no RNA molecules in this entry.

5.4 Non-standard residues in protein, DNA, RNA chains [i](#)

There are no non-standard protein/DNA/RNA residues in this entry.

5.5 Carbohydrates [i](#)

There are no monosaccharides in this entry.

5.6 Ligand geometry [i](#)

Of 5 ligands modelled in this entry, 3 are monoatomic - leaving 2 for Mogul analysis.

In the following table, the Counts columns list the number of bonds (or angles) for which Mogul statistics could be retrieved, the number of bonds (or angles) that are observed in the model and the number of bonds (or angles) that are defined in the Chemical Component Dictionary. The Link column lists molecule types, if any, to which the group is linked. The Z score for a bond length (or angle) is the number of standard deviations the observed value is removed from the expected value. A bond length (or angle) with $|Z| > 2$ is considered an outlier worth inspection. RMSZ is the root-mean-square of all Z scores of the bond lengths (or angles).

Mol	Type	Chain	Res	Link	Bond lengths			Bond angles		
					Counts	RMSZ	# $ Z > 2$	Counts	RMSZ	# $ Z > 2$
2	MNH	A	201	1	36,50,50	1.79	8 (22%)	34,82,82	4.83	19 (55%)
2	MNH	B	201	1	36,50,50	1.91	10 (27%)	34,82,82	5.20	20 (58%)

In the following table, the Chirals column lists the number of chiral outliers, the number of chiral centers analysed, the number of these observed in the model and the number defined in the Chemical Component Dictionary. Similar counts are reported in the Torsion and Rings columns. '-' means no outliers of that kind were identified.

Mol	Type	Chain	Res	Link	Chirals	Torsions	Rings
2	MNH	A	201	1	-	0/12/114/114	-
2	MNH	B	201	1	-	0/12/114/114	-

All (18) bond length outliers are listed below:

Mol	Chain	Res	Type	Atoms	Z	Observed(Å)	Ideal(Å)
2	A	201	MNH	C3C-C2C	-4.97	1.33	1.40
2	B	201	MNH	C3C-C2C	-4.95	1.33	1.40
2	A	201	MNH	C4D-ND	4.23	1.44	1.36
2	B	201	MNH	CBB-CAB	3.97	1.50	1.30
2	B	201	MNH	C1B-NB	3.74	1.43	1.36
2	A	201	MNH	C1B-NB	3.69	1.43	1.36
2	B	201	MNH	CMB-C2B	3.23	1.55	1.50
2	A	201	MNH	CBB-CAB	3.13	1.45	1.30
2	B	201	MNH	C4D-ND	3.05	1.42	1.36
2	B	201	MNH	CBC-CAC	3.03	1.49	1.29
2	A	201	MNH	CHB-C1B	2.88	1.42	1.37
2	A	201	MNH	CMB-C2B	2.59	1.54	1.50
2	B	201	MNH	CHD-C4C	-2.23	1.35	1.40
2	A	201	MNH	CHC-C1C	-2.18	1.35	1.40
2	B	201	MNH	CHA-C4D	2.17	1.41	1.37
2	A	201	MNH	CBC-CAC	2.08	1.43	1.29
2	B	201	MNH	C4B-C3B	-2.08	1.42	1.45
2	B	201	MNH	CHB-C1B	2.04	1.41	1.37

All (39) bond angle outliers are listed below:

Mol	Chain	Res	Type	Atoms	Z	Observed(°)	Ideal(°)
2	B	201	MNH	CHD-C1D-ND	-16.07	106.61	120.84
2	A	201	MNH	CHD-C1D-ND	-13.06	109.27	120.84
2	B	201	MNH	C1D-CHD-C4C	12.25	151.81	118.67
2	B	201	MNH	C4D-CHA-C1A	11.06	148.58	118.67
2	A	201	MNH	C4D-CHA-C1A	9.63	144.72	118.67
2	A	201	MNH	C1D-CHD-C4C	9.39	144.08	118.67
2	B	201	MNH	C1B-CHB-C4A	8.81	142.50	118.67
2	A	201	MNH	CHB-C1B-NB	-8.72	113.12	120.84
2	A	201	MNH	C4B-CHC-C1C	8.62	141.98	118.67
2	A	201	MNH	C1B-CHB-C4A	8.59	141.91	118.67
2	B	201	MNH	C4B-CHC-C1C	8.15	140.71	118.67
2	B	201	MNH	C1D-C2D-C3D	-6.72	103.02	108.61
2	A	201	MNH	C1D-C2D-C3D	-6.48	103.22	108.61
2	B	201	MNH	CHB-C1B-NB	-6.17	115.37	120.84
2	B	201	MNH	CHC-C4B-C3B	6.00	136.24	126.66
2	A	201	MNH	CHC-C4B-C3B	5.56	135.54	126.66
2	A	201	MNH	CMB-C2B-C3B	4.70	139.80	128.30
2	B	201	MNH	CMB-C2B-C3B	4.55	139.45	128.30
2	A	201	MNH	CMA-C3A-C2A	4.54	133.50	124.94
2	B	201	MNH	CHA-C4D-ND	-4.39	116.95	120.84
2	A	201	MNH	CMC-C2C-C3C	4.01	132.18	124.68

Continued on next page...

Continued from previous page...

Mol	Chain	Res	Type	Atoms	Z	Observed(°)	Ideal(°)
2	A	201	MNH	C4B-C3B-CAB	-3.36	116.82	128.42
2	B	201	MNH	CHC-C4B-NB	-3.34	117.88	120.84
2	A	201	MNH	O2A-CGA-CBA	-3.17	112.89	123.08
2	A	201	MNH	CHA-C4D-ND	-3.15	118.05	120.84
2	A	201	MNH	CAA-CBA-CGA	3.09	122.41	113.76
2	B	201	MNH	O2A-CGA-CBA	-3.00	113.45	123.08
2	A	201	MNH	O2D-CGD-CBD	2.89	123.33	114.03
2	B	201	MNH	CBA-CAA-C2A	2.82	117.36	112.60
2	A	201	MNH	CMD-C2D-C3D	2.81	133.75	126.12
2	B	201	MNH	CMA-C3A-C2A	2.76	130.15	124.94
2	B	201	MNH	C4B-C3B-CAB	-2.63	119.33	128.42
2	B	201	MNH	CAA-CBA-CGA	2.60	121.05	113.76
2	B	201	MNH	CMD-C2D-C3D	2.39	132.62	126.12
2	B	201	MNH	CMC-C2C-C3C	2.28	128.94	124.68
2	A	201	MNH	O1A-CGA-CBA	2.11	120.82	114.03
2	B	201	MNH	O1A-CGA-CBA	2.06	120.66	114.03
2	A	201	MNH	CBA-CAA-C2A	2.04	116.04	112.60
2	B	201	MNH	CBB-CAB-C3B	2.03	137.36	127.49

There are no chirality outliers.

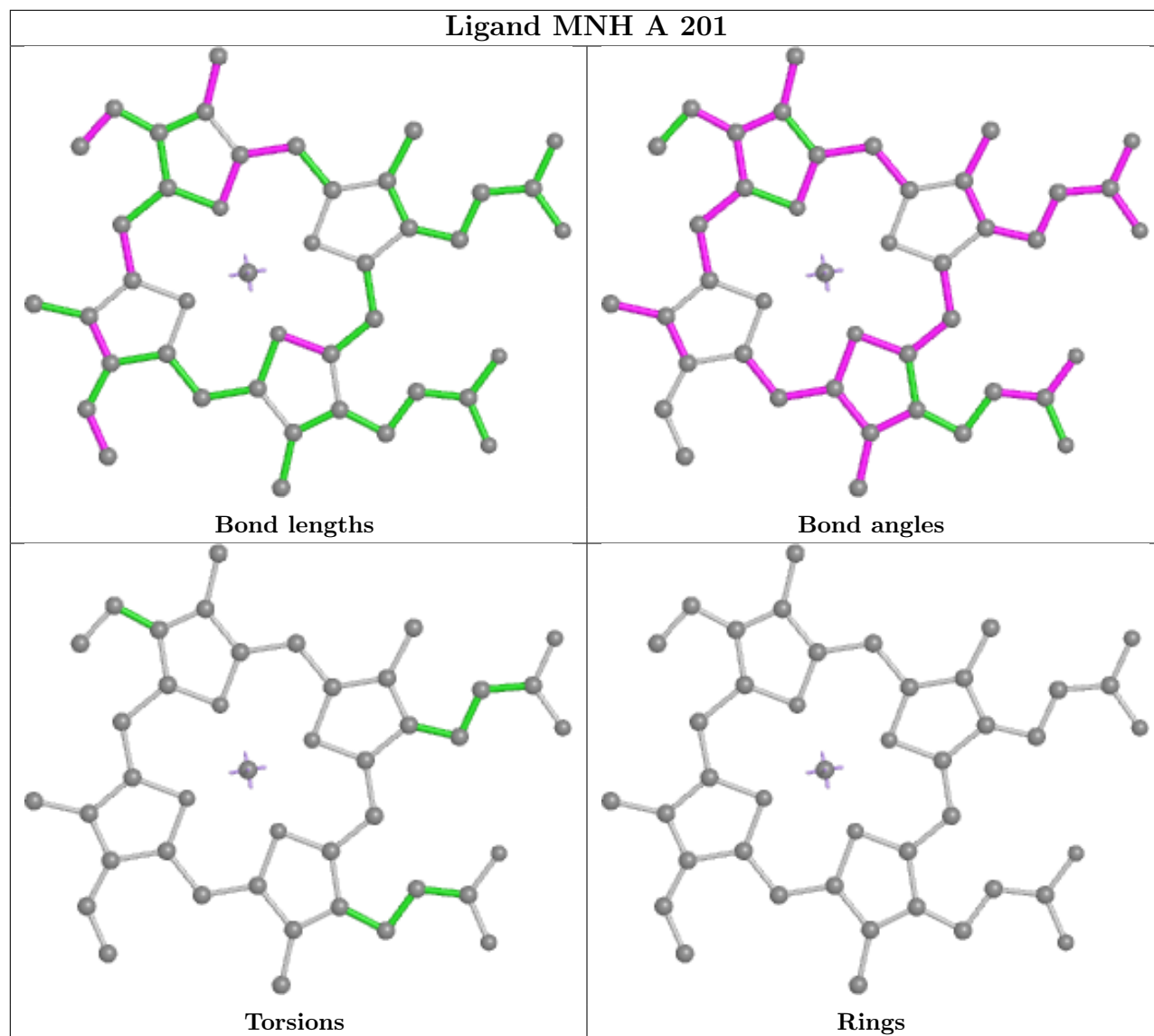
There are no torsion outliers.

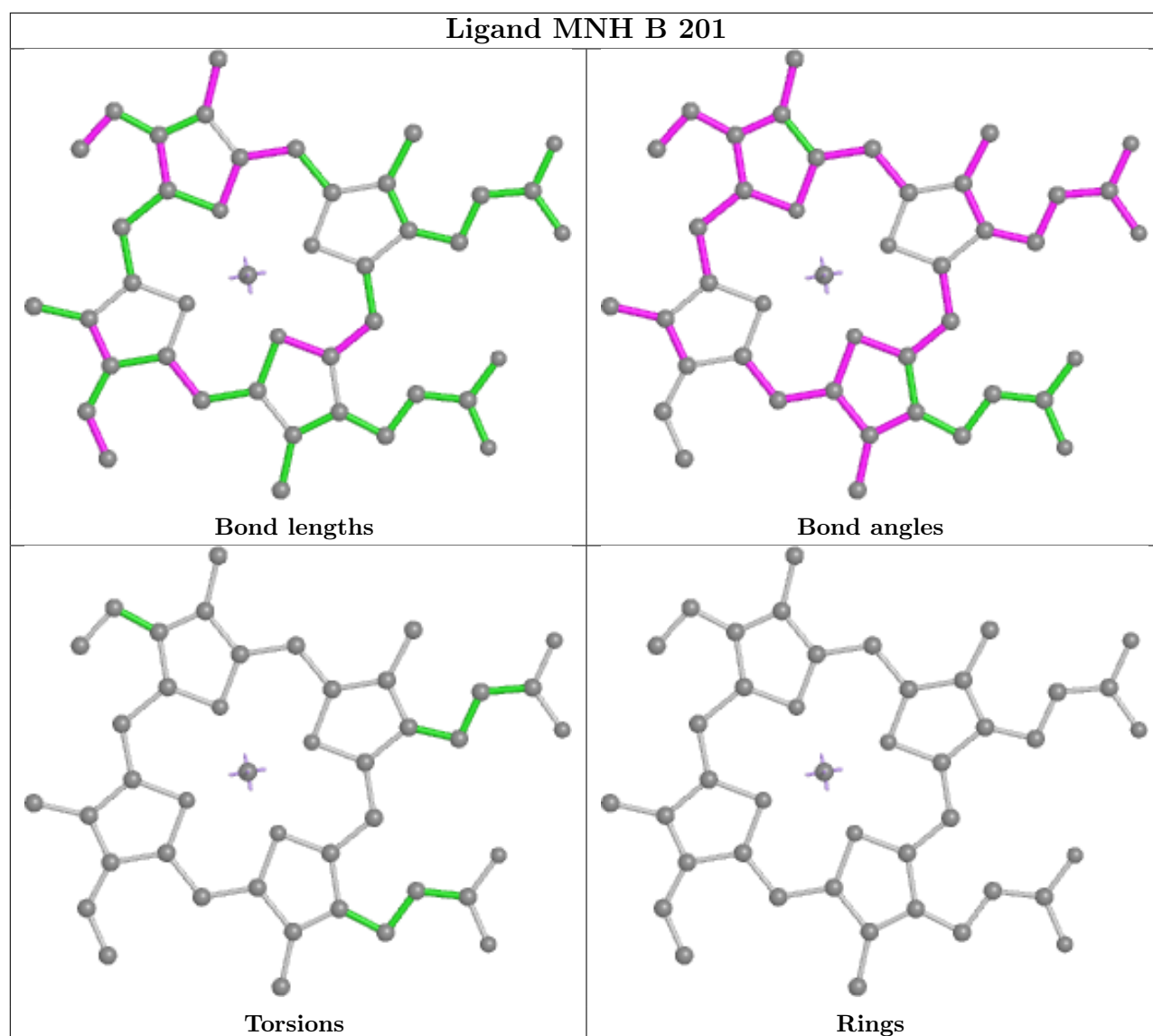
There are no ring outliers.

1 monomer is involved in 2 short contacts:

Mol	Chain	Res	Type	Clashes	Symm-Clashes
2	B	201	MNH	2	0

The following is a two-dimensional graphical depiction of Mogul quality analysis of bond lengths, bond angles, torsion angles, and ring geometry for all instances of the Ligand of Interest. In addition, ligands with molecular weight > 250 and outliers as shown on the validation Tables will also be included. For torsion angles, if less than 5% of the Mogul distribution of torsion angles is within 10 degrees of the torsion angle in question, then that torsion angle is considered an outlier. Any bond that is central to one or more torsion angles identified as an outlier by Mogul will be highlighted in the graph. For rings, the root-mean-square deviation (RMSD) between the ring in question and similar rings identified by Mogul is calculated over all ring torsion angles. If the average RMSD is greater than 60 degrees and the minimal RMSD between the ring in question and any Mogul-identified rings is also greater than 60 degrees, then that ring is considered an outlier. The outliers are highlighted in purple. The color gray indicates Mogul did not find sufficient equivalents in the CSD to analyse the geometry.





5.7 Other polymers [\(i\)](#)

There are no such residues in this entry.

5.8 Polymer linkage issues [\(i\)](#)

There are no chain breaks in this entry.

6 Fit of model and data [i](#)

6.1 Protein, DNA and RNA chains [i](#)

In the following table, the column labelled ‘#RSRZ > 2’ contains the number (and percentage) of RSRZ outliers, followed by percent RSRZ outliers for the chain as percentile scores relative to all X-ray entries and entries of similar resolution. The OWAB column contains the minimum, median, 95th percentile and maximum values of the occupancy-weighted average B-factor per residue. The column labelled ‘Q < 0.9’ lists the number of (and percentage) of residues with an average occupancy less than 0.9.

Mol	Chain	Analysed	<RSRZ>	#RSRZ>2	OWAB(Å ²)	Q<0.9
1	A	187/187 (100%)	-0.08	3 (1%) 72 75	39, 48, 77, 90	0
1	B	186/187 (99%)	0.30	16 (8%) 10 13	40, 60, 101, 134	0
All	All	373/374 (99%)	0.11	19 (5%) 28 33	39, 52, 90, 134	0

All (19) RSRZ outliers are listed below:

Mol	Chain	Res	Type	RSRZ
1	B	183	ASN	9.2
1	B	182	GLU	6.5
1	B	184	LEU	4.5
1	B	181	ASP	4.4
1	B	185	TYR	4.2
1	B	124	PRO	3.7
1	B	84	VAL	3.4
1	A	32	LYS	3.4
1	A	33	ASP	3.2
1	B	126	ASN	3.0
1	B	108	LYS	2.8
1	B	109	LEU	2.8
1	B	179	GLN	2.4
1	B	180	ASN	2.4
1	B	121	GLN	2.4
1	A	27	GLU	2.3
1	B	32	LYS	2.2
1	B	87	LYS	2.2
1	B	125	ASN	2.1

6.2 Non-standard residues in protein, DNA, RNA chains [i](#)

There are no non-standard protein/DNA/RNA residues in this entry.

6.3 Carbohydrates [i](#)

There are no monosaccharides in this entry.

6.4 Ligands [i](#)

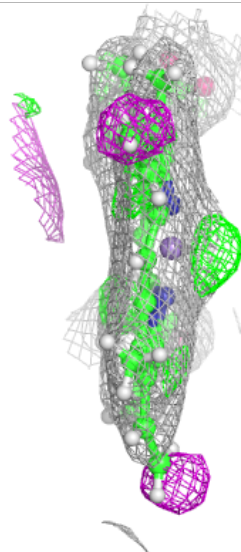
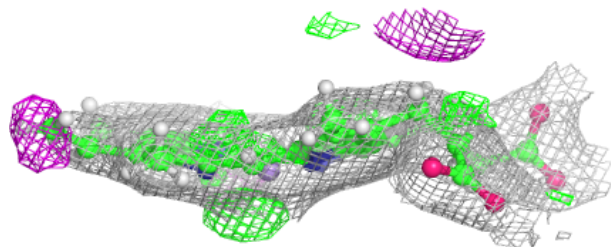
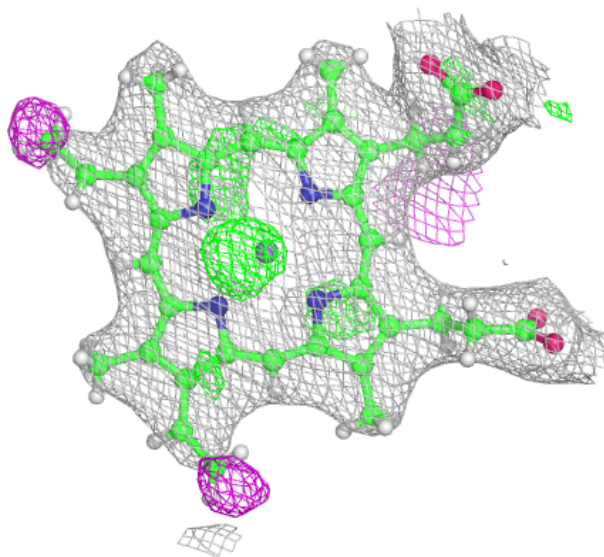
In the following table, the Atoms column lists the number of modelled atoms in the group and the number defined in the chemical component dictionary. The B-factors column lists the minimum, median, 95th percentile and maximum values of B factors of atoms in the group. The column labelled 'Q< 0.9' lists the number of atoms with occupancy less than 0.9.

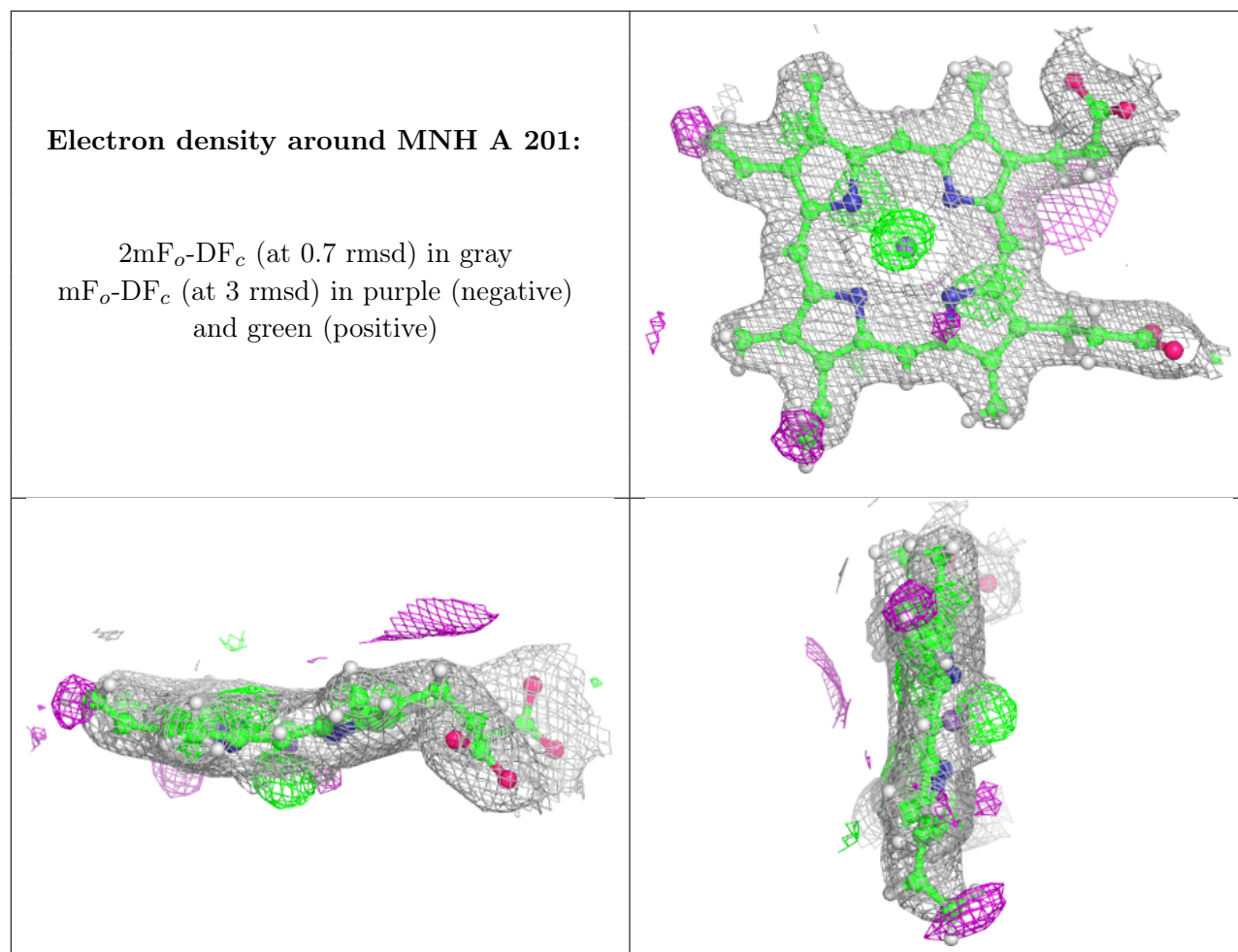
Mol	Type	Chain	Res	Atoms	RSCC	RSR	B-factors(Å ²)	Q<0.9
2	MNH	B	201	43/43	0.97	0.14	44,57,77,83	0
4	NA	A	203	1/1	0.97	0.04	44,44,44,44	0
2	MNH	A	201	43/43	0.98	0.15	37,42,51,56	0
3	ZN	A	202	1/1	0.99	0.17	41,41,41,41	0
3	ZN	B	202	1/1	1.00	0.15	51,51,51,51	0

The following is a graphical depiction of the model fit to experimental electron density of all instances of the Ligand of Interest. In addition, ligands with molecular weight > 250 and outliers as shown on the geometry validation Tables will also be included. Each fit is shown from different orientation to approximate a three-dimensional view.

Electron density around MNH B 201:

$2mF_o-DF_c$ (at 0.7 rmsd) in gray
 mF_o-DF_c (at 3 rmsd) in purple (negative)
and green (positive)





6.5 Other polymers [i](#)

There are no such residues in this entry.