



# Full wwPDB X-ray Structure Validation Report ⓘ

Sep 24, 2023 – 01:21 PM EDT

PDB ID : 5UEG  
Title : RNA primer-template complex with guanosine dinucleotide G(5')pppp(5')G  
ligand  
Authors : Zhang, W.; Tam, C.P.; Szostak, J.W.  
Deposited on : 2017-01-02  
Resolution : 2.60 Å(reported)

This is a Full wwPDB X-ray Structure Validation Report for a publicly released PDB entry.

We welcome your comments at [validation@mail.wwpdb.org](mailto:validation@mail.wwpdb.org)

A user guide is available at

<https://www.wwpdb.org/validation/2017/XrayValidationReportHelp>

with specific help available everywhere you see the ⓘ symbol.

The types of validation reports are described at

<http://www.wwpdb.org/validation/2017/FAQs#types>.

---

The following versions of software and data (see [references ⓘ](#)) were used in the production of this report:

MolProbity : 4.02b-467  
Mogul : 1.8.5 (274361), CSD as541be (2020)  
Xtrriage (Phenix) : 1.13  
EDS : 2.35.1  
buster-report : 1.1.7 (2018)  
Percentile statistics : 20191225.v01 (using entries in the PDB archive December 25th 2019)  
Refmac : 5.8.0158  
CCP4 : 7.0.044 (Gargrove)  
Ideal geometry (proteins) : Engh & Huber (2001)  
Ideal geometry (DNA, RNA) : Parkinson et al. (1996)  
Validation Pipeline (wwPDB-VP) : 2.35.1

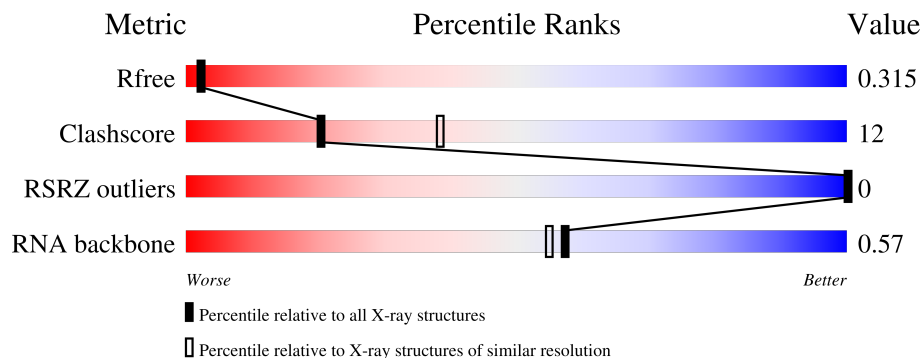
# 1 Overall quality at a glance

The following experimental techniques were used to determine the structure:

*X-RAY DIFFRACTION*

The reported resolution of this entry is 2.60 Å.

Percentile scores (ranging between 0-100) for global validation metrics of the entry are shown in the following graphic. The table shows the number of entries on which the scores are based.



Metric	Whole archive (#Entries)	Similar resolution (#Entries, resolution range(Å))
$R_{free}$	130704	3163 (2.60-2.60)
Clashscore	141614	3518 (2.60-2.60)
RSRZ outliers	127900	3104 (2.60-2.60)
RNA backbone	3102	1040 (2.90-2.30)

The table below summarises the geometric issues observed across the polymeric chains and their fit to the electron density. The red, orange, yellow and green segments of the lower bar indicate the fraction of residues that contain outliers for  $\geq 3$ , 2, 1 and 0 types of geometric quality criteria respectively. A grey segment represents the fraction of residues that are not modelled. The numeric value for each fraction is indicated below the corresponding segment, with a dot representing fractions  $\leq 5\%$ . The upper red bar (where present) indicates the fraction of residues that have poor fit to the electron density. The numeric value is given above the bar.

Mol	Chain	Length	Quality of chain
1	A	14	 64% 36%
1	B	14	 64% 21% 14%
1	C	14	 57% 36% 7%
1	D	14	 71% 21% 7%

## 2 Entry composition i

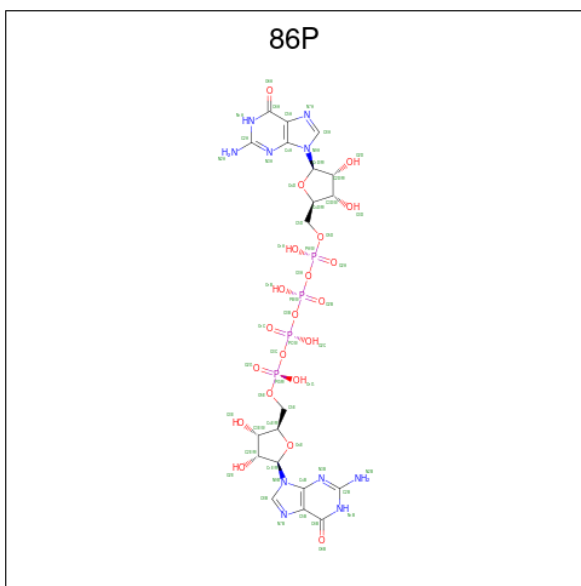
There are 2 unique types of molecules in this entry. The entry contains 1632 atoms, of which 0 are hydrogens and 0 are deuteriums.

In the tables below, the ZeroOcc column contains the number of atoms modelled with zero occupancy, the AltConf column contains the number of residues with at least one atom in alternate conformation and the Trace column contains the number of residues modelled with at most 2 atoms.

- Molecule 1 is a RNA chain called RNA (5'-R\*(LCC)P\*(LCC)P\*(LCC)P\*GP\*AP\*CP\*UP\*UP\*AP\*AP\*GP\*UP\*CP\*G)-3').

Mol	Chain	Residues	Atoms					ZeroOcc	AltConf	Trace
			Total	C	N	O	P			
1	A	14	Total 298	C 138	N 51	O 96	P 13	0	0	0
1	B	14	Total 298	C 138	N 51	O 96	P 13	0	0	0
1	C	14	Total 298	C 138	N 51	O 96	P 13	0	0	0
1	D	14	Total 298	C 138	N 51	O 96	P 13	0	0	0

- Molecule 2 is [[[2 {R},3 {S},4 {R},5 {R}]-5-(2-azanyl-6-oxidanylidene-1 {H}-purin-9-yl)-3,4-bis(oxidanyl)oxolan-2-yl]methoxy-oxidanyl-phosphoryl] [[[2 {R},3 {S},4 {R},5 {R}]-5-(2-azanyl-6-oxidanylidene-1 {H}-purin-9-yl)-3,4-bis(oxidanyl)oxolan-2-yl]methoxy-oxidanyl-phosphoryl]oxy-oxidanyl-phosphoryl] hydrogen phosphate (three-letter code: 86P) (formula: C<sub>20</sub>H<sub>28</sub>N<sub>10</sub>O<sub>21</sub>P<sub>4</sub>).



<b>Mol</b>	<b>Chain</b>	<b>Residues</b>	<b>Atoms</b>					<b>ZeroOcc</b>	<b>AltConf</b>
2	A	1	Total 110	C 40	N 20	O 42	P 8	0	1
2	B	1	Total 110	C 40	N 20	O 42	P 8	0	1
2	C	1	Total 110	C 40	N 20	O 42	P 8	0	1
2	D	1	Total 110	C 40	N 20	O 42	P 8	0	1

### 3 Residue-property plots [i](#)

These plots are drawn for all protein, RNA, DNA and oligosaccharide chains in the entry. The first graphic for a chain summarises the proportions of the various outlier classes displayed in the second graphic. The second graphic shows the sequence view annotated by issues in geometry and electron density. Residues are color-coded according to the number of geometric quality criteria for which they contain at least one outlier: green = 0, yellow = 1, orange = 2 and red = 3 or more. A red dot above a residue indicates a poor fit to the electron density ( $RSRZ > 2$ ). Stretches of 2 or more consecutive residues without any outlier are shown as a green connector. Residues present in the sample, but not in the model, are shown in grey.

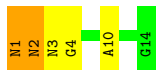
- Molecule 1: RNA (5'-R\*(LCC)P\*(LCC)P\*(LCC)P\*GP\*AP\*CP\*UP\*UP\*AP\*AP\*GP\*UP\*C P\*G)-3')

Chain A:  64% 36%



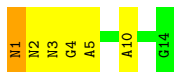
- Molecule 1: RNA (5'-R\*(LCC)P\*(LCC)P\*(LCC)P\*GP\*AP\*CP\*UP\*UP\*AP\*AP\*GP\*UP\*C P\*G)-3')

Chain B:  64% 21% 14%



- Molecule 1: RNA (5'-R\*(LCC)P\*(LCC)P\*(LCC)P\*GP\*AP\*CP\*UP\*UP\*AP\*AP\*GP\*UP\*C P\*G)-3')

Chain C:  57% 36% 7%



- Molecule 1: RNA (5'-R\*(LCC)P\*(LCC)P\*(LCC)P\*GP\*AP\*CP\*UP\*UP\*AP\*AP\*GP\*UP\*C P\*G)-3')

Chain D:  71% 21% 7%



## 4 Data and refinement statistics

Property	Value	Source
Space group	P 3	Depositor
Cell constants a, b, c, $\alpha$ , $\beta$ , $\gamma$	48.42Å 48.42Å 81.97Å 90.00° 90.00° 120.00°	Depositor
Resolution (Å)	50.00 – 2.60 41.93 – 2.60	Depositor EDS
% Data completeness (in resolution range)	96.3 (50.00-2.60) 96.3 (41.93-2.60)	Depositor EDS
$R_{merge}$	0.10	Depositor
$R_{sym}$	(Not available)	Depositor
$\langle I/\sigma(I) \rangle$ <sup>1</sup>	1.98 (at 2.61Å)	Xtriage
Refinement program	REFMAC 5.8.0135	Depositor
R, $R_{free}$	0.208 , 0.301 0.212 , 0.315	Depositor DCC
$R_{free}$ test set	325 reflections (5.07%)	wwPDB-VP
Wilson B-factor (Å <sup>2</sup> )	86.0	Xtriage
Anisotropy	0.165	Xtriage
Bulk solvent $k_{sol}$ (e/Å <sup>3</sup> ), $B_{sol}$ (Å <sup>2</sup> )	0.12 , -2.5	EDS
L-test for twinning <sup>2</sup>	$\langle  L  \rangle = 0.57$ , $\langle L^2 \rangle = 0.42$	Xtriage
Estimated twinning fraction	0.457 for -h,-k,l 0.470 for h,-h-k,-l 0.459 for -k,-h,-l	Xtriage
$F_o, F_c$ correlation	0.96	EDS
Total number of atoms	1632	wwPDB-VP
Average B, all atoms (Å <sup>2</sup> )	89.0	wwPDB-VP

Xtriage's analysis on translational NCS is as follows: *The largest off-origin peak in the Patterson function is 8.97% of the height of the origin peak. No significant pseudotranslation is detected.*

<sup>1</sup>Intensities estimated from amplitudes.

<sup>2</sup>Theoretical values of  $\langle |L| \rangle$ ,  $\langle L^2 \rangle$  for acentric reflections are 0.5, 0.333 respectively for untwinned datasets, and 0.375, 0.2 for perfectly twinned datasets.

## 5 Model quality [i](#)

### 5.1 Standard geometry [i](#)

Bond lengths and bond angles in the following residue types are not validated in this section: 86P, LCC

The Z score for a bond length (or angle) is the number of standard deviations the observed value is removed from the expected value. A bond length (or angle) with  $|Z| > 5$  is considered an outlier worth inspection. RMSZ is the root-mean-square of all Z scores of the bond lengths (or angles).

Mol	Chain	Bond lengths		Bond angles	
		RMSZ	# $ Z  > 5$	RMSZ	# $ Z  > 5$
1	A	0.46	0/262	0.97	1/406 (0.2%)
1	B	0.79	1/262 (0.4%)	0.99	1/406 (0.2%)
1	C	0.62	0/262	1.00	2/406 (0.5%)
1	D	0.84	1/262 (0.4%)	0.93	1/406 (0.2%)
All	All	0.70	2/1048 (0.2%)	0.97	5/1624 (0.3%)

All (2) bond length outliers are listed below:

Mol	Chain	Res	Type	Atoms	Z	Observed(Å)	Ideal(Å)
1	D	4	G	P-OP2	10.13	1.66	1.49
1	B	4	G	P-OP2	9.51	1.65	1.49

All (5) bond angle outliers are listed below:

Mol	Chain	Res	Type	Atoms	Z	Observed(°)	Ideal(°)
1	A	8	U	O5'-P-OP2	-6.75	99.63	105.70
1	D	4	G	P-O5'-C5'	-6.29	110.83	120.90
1	C	5	A	O5'-P-OP2	-5.67	100.60	105.70
1	B	4	G	P-O5'-C5'	-5.62	111.90	120.90
1	C	4	G	P-O5'-C5'	-5.53	112.05	120.90

There are no chirality outliers.

There are no planarity outliers.

### 5.2 Too-close contacts [i](#)

In the following table, the Non-H and H(model) columns list the number of non-hydrogen atoms and hydrogen atoms in the chain respectively. The H(added) column lists the number of hydrogen atoms added and optimized by MolProbity. The Clashes column lists the number of clashes within

the asymmetric unit, whereas Symm-Clashes lists symmetry-related clashes.

Mol	Chain	Non-H	H(model)	H(added)	Clashes	Symm-Clashes
1	A	298	0	158	0	0
1	B	298	0	158	2	0
1	C	298	0	158	1	0
1	D	298	0	158	1	0
2	A	110	0	0	4	0
2	B	110	0	0	6	0
2	C	110	0	0	6	0
2	D	110	0	0	8	0
All	All	1632	0	632	28	0

The all-atom clashscore is defined as the number of clashes found per 1000 atoms (including hydrogen atoms). The all-atom clashscore for this structure is 12.

All (28) close contacts within the same asymmetric unit are listed below, sorted by their clash magnitude.

Atom-1	Atom-2	Interatomic distance (Å)	Clash overlap (Å)
2:D:101[B]:86P:C8B	2:D:101[B]:86P:C5E	1.97	1.42
2:D:101[A]:86P:C4E	2:D:101[A]:86P:O1G	1.92	1.14
2:C:101[A]:86P:C8B	2:C:101[A]:86P:C5E	2.54	0.86
2:C:101[A]:86P:O2G	2:C:101[A]:86P:O2B	1.99	0.81
2:A:101[A]:86P:O3C	2:A:101[A]:86P:O2B	2.01	0.79
2:A:101[A]:86P:O2B	2:A:101[A]:86P:O2G	2.06	0.74
2:D:101[B]:86P:O1G	2:D:101[B]:86P:PB	2.46	0.73
2:D:101[B]:86P:O1G	2:D:101[B]:86P:O1B	2.07	0.73
2:D:101[B]:86P:O3B	2:D:101[B]:86P:O5D	2.12	0.68
2:D:101[B]:86P:O1B	2:D:101[B]:86P:N7B	2.30	0.65
2:A:101[A]:86P:O2B	2:A:101[A]:86P:PG	2.58	0.61
2:B:101[A]:86P:O2C	2:B:101[A]:86P:C5E	2.52	0.57
2:D:101[B]:86P:O5D	2:D:101[B]:86P:PC	2.63	0.57
2:C:101[A]:86P:O2G	2:C:101[A]:86P:PB	2.64	0.56
2:B:101[B]:86P:O1C	2:B:101[B]:86P:C5E	2.54	0.56
2:A:101[A]:86P:C8B	2:A:101[A]:86P:C5E	2.92	0.47
2:B:101[A]:86P:O2C	2:B:101[A]:86P:O5E	2.33	0.47
1:B:1:LCC:C5'	1:B:2:LCC:P	3.03	0.47
2:C:101[A]:86P:C5E	2:C:101[A]:86P:N9B	2.75	0.45
2:B:101[B]:86P:C5E	2:B:101[B]:86P:PC	3.06	0.43
1:C:1:LCC:H41	1:C:1:LCC:H5M1	1.71	0.43
2:B:101[A]:86P:O1G	2:B:101[A]:86P:O1B	2.37	0.43
2:B:101[B]:86P:O1C	2:B:101[B]:86P:C3D	2.66	0.43
2:C:101[B]:86P:C5E	2:C:101[B]:86P:C8B	2.97	0.42

*Continued on next page...*



Continued from previous page...

Atom-1	Atom-2	Interatomic distance (Å)	Clash overlap (Å)
2:D:101[B]:86P:O1G	2:D:101[B]:86P:N7B	2.52	0.42
1:D:1:LCC:H41	1:D:1:LCC:H5M1	1.66	0.42
1:B:1:LCC:H41	1:B:1:LCC:H5M1	1.72	0.41
2:C:101[B]:86P:N3B	2:C:101[B]:86P:C2E	2.83	0.41

There are no symmetry-related clashes.

## 5.3 Torsion angles [i](#)

### 5.3.1 Protein backbone [i](#)

There are no protein molecules in this entry.

### 5.3.2 Protein sidechains [i](#)

There are no protein molecules in this entry.

### 5.3.3 RNA [i](#)

Mol	Chain	Analysed	Backbone Outliers	Pucker Outliers
1	A	10/14 (71%)	1 (10%)	0
1	B	10/14 (71%)	1 (10%)	0
1	C	10/14 (71%)	1 (10%)	0
1	D	10/14 (71%)	0	0
All	All	40/56 (71%)	3 (7%)	0

All (3) RNA backbone outliers are listed below:

Mol	Chain	Res	Type
1	A	10	A
1	B	10	A
1	C	10	A

There are no RNA pucker outliers to report.

## 5.4 Non-standard residues in protein, DNA, RNA chains [i](#)

12 non-standard protein/DNA/RNA residues are modelled in this entry.

In the following table, the Counts columns list the number of bonds (or angles) for which Mogul statistics could be retrieved, the number of bonds (or angles) that are observed in the model and the number of bonds (or angles) that are defined in the Chemical Component Dictionary. The Link column lists molecule types, if any, to which the group is linked. The Z score for a bond length (or angle) is the number of standard deviations the observed value is removed from the expected value. A bond length (or angle) with  $|Z| > 2$  is considered an outlier worth inspection. RMSZ is the root-mean-square of all Z scores of the bond lengths (or angles).

Mol	Type	Chain	Res	Link	Bond lengths			Bond angles		
					Counts	RMSZ	# Z  > 2	Counts	RMSZ	# Z  > 2
1	LCC	A	2	1	20,24,25	2.71	8 (40%)	28,37,40	1.74	8 (28%)
1	LCC	B	2	1	20,24,25	3.04	9 (45%)	28,37,40	2.58	11 (39%)
1	LCC	B	3	1	20,24,25	2.73	8 (40%)	28,37,40	2.26	8 (28%)
1	LCC	A	3	1	20,24,25	3.00	7 (35%)	28,37,40	2.46	10 (35%)
1	LCC	C	3	1	20,24,25	3.16	9 (45%)	28,37,40	2.68	9 (32%)
1	LCC	C	2	1	20,24,25	2.95	7 (35%)	28,37,40	2.37	11 (39%)
1	LCC	D	1	1	20,21,25	2.79	9 (45%)	30,33,40	2.06	10 (33%)
1	LCC	D	2	1	20,24,25	2.78	8 (40%)	28,37,40	1.79	8 (28%)
1	LCC	A	1	1	20,21,25	2.93	10 (50%)	30,33,40	1.99	9 (30%)
1	LCC	C	1	1	20,21,25	2.64	6 (30%)	30,33,40	2.58	12 (40%)
1	LCC	D	3	1	20,24,25	2.68	9 (45%)	28,37,40	2.01	7 (25%)
1	LCC	B	1	1	20,21,25	2.70	10 (50%)	30,33,40	2.63	12 (40%)

In the following table, the Chirals column lists the number of chiral outliers, the number of chiral centers analysed, the number of these observed in the model and the number defined in the Chemical Component Dictionary. Similar counts are reported in the Torsion and Rings columns. '-' means no outliers of that kind were identified.

Mol	Type	Chain	Res	Link	Chirals	Torsions	Rings
1	LCC	A	2	1	-	0/8/35/36	0/4/3/3
1	LCC	B	2	1	-	4/8/35/36	0/4/3/3
1	LCC	B	3	1	-	3/8/35/36	0/4/3/3
1	LCC	A	3	1	-	1/8/35/36	0/4/3/3
1	LCC	C	3	1	-	3/8/35/36	0/4/3/3
1	LCC	C	2	1	-	1/8/35/36	0/4/3/3
1	LCC	D	1	1	-	0/7/32/36	0/4/3/3
1	LCC	D	2	1	-	0/8/35/36	0/4/3/3
1	LCC	A	1	1	-	0/7/32/36	0/4/3/3
1	LCC	C	1	1	-	0/7/32/36	0/4/3/3
1	LCC	D	3	1	-	0/8/35/36	0/4/3/3
1	LCC	B	1	1	-	3/7/32/36	0/4/3/3

All (100) bond length outliers are listed below:

Mol	Chain	Res	Type	Atoms	Z	Observed(Å)	Ideal(Å)
1	C	2	LCC	C4'-C3'	-9.90	1.42	1.53
1	A	3	LCC	C4'-C3'	-9.61	1.42	1.53
1	C	1	LCC	C4'-C3'	-9.14	1.42	1.53
1	C	3	LCC	C4'-C3'	-8.95	1.43	1.53
1	D	1	LCC	C4'-C3'	-8.89	1.43	1.53
1	A	1	LCC	C4'-C3'	-8.88	1.43	1.53
1	D	2	LCC	C4'-C3'	-8.18	1.44	1.53
1	A	2	LCC	C4'-C3'	-7.81	1.44	1.53
1	D	3	LCC	C4'-C3'	-6.98	1.45	1.53
1	B	2	LCC	O2'-C6'	6.17	1.55	1.43
1	B	3	LCC	O2'-C6'	5.52	1.54	1.43
1	B	2	LCC	C4'-C3'	-5.38	1.47	1.53
1	C	3	LCC	O4'-C4'	-5.27	1.38	1.45
1	B	3	LCC	O4'-C4'	-5.25	1.38	1.45
1	B	2	LCC	O3'-C3'	5.19	1.53	1.42
1	B	1	LCC	C2'-C3'	-4.88	1.42	1.53
1	B	3	LCC	C2'-C3'	-4.85	1.42	1.53
1	A	3	LCC	C5M-C5	-4.84	1.38	1.50
1	C	3	LCC	C5M-C5	-4.83	1.38	1.50
1	C	3	LCC	O2'-C6'	4.69	1.52	1.43
1	D	3	LCC	C5M-C5	-4.64	1.39	1.50
1	B	2	LCC	O4'-C4'	-4.60	1.39	1.45
1	B	1	LCC	O4'-C4'	-4.60	1.39	1.45
1	B	3	LCC	C5M-C5	-4.52	1.39	1.50
1	B	1	LCC	C4'-C3'	-4.47	1.48	1.53
1	B	2	LCC	C2'-C3'	-4.44	1.43	1.53
1	D	3	LCC	O2'-C6'	4.31	1.51	1.43
1	B	1	LCC	O2'-C6'	4.26	1.51	1.43
1	B	2	LCC	C5M-C5	-4.23	1.40	1.50
1	B	1	LCC	O3'-C3'	-4.20	1.34	1.42
1	A	1	LCC	O3'-C3'	-4.16	1.34	1.42
1	B	3	LCC	C4'-C3'	-4.02	1.49	1.53
1	D	2	LCC	O4'-C4'	-3.95	1.40	1.45
1	A	2	LCC	O4'-C4'	-3.93	1.40	1.45
1	A	2	LCC	C5M-C5	-3.85	1.41	1.50
1	A	3	LCC	C2'-C1'	-3.81	1.43	1.53
1	A	3	LCC	O2'-C6'	3.77	1.50	1.43
1	D	2	LCC	C5M-C5	-3.68	1.41	1.50
1	A	2	LCC	C6'-C4'	3.64	1.59	1.53
1	C	2	LCC	O4'-C4'	-3.63	1.40	1.45
1	C	1	LCC	C5M-C5	-3.62	1.41	1.50
1	D	2	LCC	O2'-C6'	3.59	1.50	1.43

*Continued on next page...*

*Continued from previous page...*

Mol	Chain	Res	Type	Atoms	Z	Observed(Å)	Ideal(Å)
1	C	3	LCC	C2'-C1'	-3.53	1.44	1.53
1	A	1	LCC	C2'-C3'	-3.51	1.45	1.53
1	D	2	LCC	C6'-C4'	3.51	1.59	1.53
1	D	1	LCC	C6-C5	3.49	1.40	1.34
1	C	2	LCC	C6'-C4'	3.48	1.59	1.53
1	A	1	LCC	C5M-C5	-3.46	1.42	1.50
1	C	2	LCC	C5M-C5	-3.45	1.42	1.50
1	A	2	LCC	O2'-C6'	3.36	1.50	1.43
1	D	3	LCC	O4'-C4'	-3.36	1.41	1.45
1	D	1	LCC	C5M-C5	-3.36	1.42	1.50
1	A	1	LCC	C6-C5	3.26	1.39	1.34
1	B	1	LCC	C6-C5	3.16	1.39	1.34
1	D	1	LCC	O2'-C2'	3.13	1.50	1.43
1	C	1	LCC	C6-C5	3.13	1.39	1.34
1	B	1	LCC	C5M-C5	-3.07	1.43	1.50
1	C	1	LCC	C2'-C1'	-3.07	1.45	1.53
1	D	2	LCC	C6-C5	3.03	1.39	1.34
1	D	1	LCC	C2'-C3'	-2.99	1.46	1.53
1	A	1	LCC	O2'-C6'	2.97	1.49	1.43
1	C	2	LCC	C2'-C3'	-2.92	1.46	1.53
1	C	3	LCC	C6-C5	2.88	1.39	1.34
1	B	3	LCC	C6-C5	2.87	1.39	1.34
1	B	2	LCC	C6'-C4'	2.85	1.58	1.53
1	D	1	LCC	O3'-C3'	-2.84	1.37	1.42
1	D	3	LCC	C2'-C3'	-2.84	1.46	1.53
1	C	1	LCC	C6'-C4'	2.81	1.58	1.53
1	D	3	LCC	C6-C5	2.77	1.39	1.34
1	D	1	LCC	C6'-C4'	2.77	1.58	1.53
1	A	2	LCC	C6-C5	2.76	1.39	1.34
1	D	3	LCC	C2'-C1'	-2.65	1.46	1.53
1	A	3	LCC	C6-C5	2.58	1.38	1.34
1	B	3	LCC	C6-N1	2.57	1.42	1.38
1	C	3	LCC	C2'-C3'	-2.51	1.47	1.53
1	A	3	LCC	O4'-C4'	-2.51	1.42	1.45
1	C	2	LCC	O2'-C6'	2.51	1.48	1.43
1	B	2	LCC	C6-C5	2.50	1.38	1.34
1	C	3	LCC	C6-N1	2.48	1.42	1.38
1	B	1	LCC	O4'-C1'	-2.47	1.39	1.42
1	A	2	LCC	O2'-C2'	2.46	1.49	1.43
1	B	2	LCC	O2'-C2'	2.46	1.49	1.43
1	D	2	LCC	O2'-C2'	2.42	1.49	1.43
1	A	1	LCC	O4'-C1'	2.39	1.46	1.42

*Continued on next page...*

*Continued from previous page...*

Mol	Chain	Res	Type	Atoms	Z	Observed(Å)	Ideal(Å)
1	D	1	LCC	O2'-C6'	2.34	1.48	1.43
1	A	1	LCC	C6'-C4'	2.32	1.57	1.53
1	D	3	LCC	C2-N1	-2.32	1.35	1.40
1	A	1	LCC	O2'-C2'	2.28	1.48	1.43
1	B	3	LCC	O3'-C3'	2.26	1.47	1.42
1	A	2	LCC	C6-N1	2.26	1.41	1.38
1	D	1	LCC	C2-N1	-2.26	1.35	1.40
1	A	1	LCC	O4'-C4'	-2.23	1.42	1.45
1	C	2	LCC	O2'-C2'	2.22	1.48	1.43
1	D	2	LCC	C6-N1	2.18	1.41	1.38
1	C	1	LCC	C6-N1	2.18	1.41	1.38
1	C	3	LCC	C2-N1	-2.18	1.35	1.40
1	D	3	LCC	C6'-C4'	2.17	1.57	1.53
1	B	1	LCC	C6-N1	2.15	1.41	1.38
1	B	1	LCC	C2-N1	-2.13	1.35	1.40
1	A	3	LCC	O2'-C2'	2.02	1.48	1.43

All (115) bond angle outliers are listed below:

Mol	Chain	Res	Type	Atoms	Z	Observed(°)	Ideal(°)
1	C	3	LCC	O4'-C1'-N1	-8.85	97.38	108.77
1	B	1	LCC	O3'-C3'-C2'	7.41	136.03	112.57
1	C	1	LCC	O4'-C4'-C5'	6.96	121.56	108.97
1	A	3	LCC	O4'-C1'-N1	-6.75	100.07	108.77
1	C	3	LCC	C5-C6-N1	-6.46	116.70	123.34
1	A	3	LCC	C5-C6-N1	-5.59	117.59	123.34
1	C	1	LCC	C5-C6-N1	-5.53	117.65	123.34
1	B	2	LCC	C5-C6-N1	-5.43	117.76	123.34
1	B	2	LCC	O3'-C3'-C4'	-5.38	98.13	112.52
1	D	1	LCC	C5-C6-N1	-5.35	117.83	123.34
1	D	3	LCC	O4'-C1'-N1	-5.33	101.90	108.77
1	C	2	LCC	C5-C6-N1	-5.21	117.98	123.34
1	B	3	LCC	O4'-C1'-N1	-5.07	102.24	108.77
1	B	1	LCC	O5'-C5'-C4'	-4.77	102.08	111.71
1	B	2	LCC	O3'-C3'-C2'	4.68	127.40	112.57
1	B	3	LCC	C5-C6-N1	-4.64	118.56	123.34
1	C	1	LCC	O4'-C4'-C3'	-4.63	96.09	102.22
1	C	2	LCC	C5M-C5-C6	-4.61	116.69	122.85
1	B	2	LCC	O2-C2-N3	-4.53	114.97	122.33
1	B	3	LCC	O2-C2-N3	-4.49	115.03	122.33
1	A	1	LCC	O5'-C5'-C4'	-4.42	102.79	111.71
1	C	3	LCC	C2'-C1'-N1	4.41	122.80	114.22

*Continued on next page...*

*Continued from previous page...*

Mol	Chain	Res	Type	Atoms	Z	Observed(°)	Ideal(°)
1	B	1	LCC	C5-C6-N1	-4.41	118.80	123.34
1	B	2	LCC	C5M-C5-C6	-4.40	116.98	122.85
1	D	3	LCC	C5-C6-N1	-4.29	118.92	123.34
1	B	1	LCC	O2-C2-N3	-4.21	115.49	122.33
1	A	1	LCC	C5-C6-N1	-4.12	119.10	123.34
1	B	3	LCC	C2'-C1'-N1	4.09	122.16	114.22
1	A	3	LCC	C2'-C1'-N1	4.04	122.07	114.22
1	C	1	LCC	O5'-C5'-C4'	-4.04	103.57	111.71
1	C	2	LCC	O4'-C4'-C6'	3.98	114.39	105.97
1	C	2	LCC	C4'-O4'-C1'	-3.94	100.69	107.58
1	A	2	LCC	C5-C6-N1	-3.90	119.32	123.34
1	B	1	LCC	C2'-C1'-N1	3.89	121.79	114.22
1	A	1	LCC	O4'-C4'-C5'	3.83	115.91	108.97
1	B	1	LCC	O4'-C4'-C5'	-3.83	102.04	108.97
1	D	3	LCC	C5M-C5-C6	-3.82	117.75	122.85
1	D	2	LCC	C5M-C5-C6	-3.80	117.78	122.85
1	A	3	LCC	C5M-C5-C6	-3.79	117.79	122.85
1	D	2	LCC	C5-C6-N1	-3.73	119.50	123.34
1	B	1	LCC	O2'-C6'-C4'	-3.69	96.62	103.78
1	A	3	LCC	O2-C2-N3	-3.68	116.34	122.33
1	C	2	LCC	O4'-C1'-N1	-3.64	104.08	108.77
1	B	3	LCC	C5M-C5-C6	-3.63	118.00	122.85
1	B	2	LCC	C4'-O4'-C1'	-3.53	101.41	107.58
1	C	1	LCC	O2-C2-N3	-3.42	116.78	122.33
1	D	2	LCC	C2'-C1'-N1	3.39	120.81	114.22
1	C	1	LCC	O2'-C2'-C3'	3.39	110.08	103.42
1	C	3	LCC	C5M-C5-C6	-3.38	118.33	122.85
1	D	1	LCC	O3'-C3'-C4'	-3.38	103.49	112.52
1	A	2	LCC	O2-C2-N3	-3.37	116.84	122.33
1	D	2	LCC	O2-C2-N3	-3.37	116.86	122.33
1	D	1	LCC	O5'-C5'-C4'	-3.33	104.99	111.71
1	B	3	LCC	O2'-C6'-C4'	-3.31	97.37	103.78
1	C	2	LCC	O2-C2-N3	-3.31	116.95	122.33
1	D	3	LCC	C2'-C1'-N1	3.31	120.65	114.22
1	D	3	LCC	O2'-C6'-C4'	-3.27	97.43	103.78
1	A	3	LCC	O3'-C3'-C4'	3.25	121.20	112.52
1	B	1	LCC	O3'-C3'-C4'	-3.17	104.03	112.52
1	D	1	LCC	O4'-C4'-C5'	3.10	114.58	108.97
1	C	3	LCC	O2-C2-N3	-3.08	117.33	122.33
1	C	2	LCC	C2'-C1'-N1	3.05	120.15	114.22
1	D	1	LCC	O2-C2-N3	-3.00	117.45	122.33
1	D	3	LCC	O2-C2-N3	-2.96	117.51	122.33

*Continued on next page...*

*Continued from previous page...*

Mol	Chain	Res	Type	Atoms	Z	Observed(°)	Ideal(°)
1	B	3	LCC	C4'-O4'-C1'	-2.93	102.47	107.58
1	C	1	LCC	O3'-C3'-C2'	-2.88	103.44	112.57
1	B	2	LCC	O4'-C4'-C6'	2.87	112.05	105.97
1	D	1	LCC	O4'-C4'-C6'	2.87	112.04	105.97
1	A	3	LCC	O2'-C6'-C4'	-2.82	98.31	103.78
1	A	1	LCC	O4'-C4'-C3'	-2.82	98.48	102.22
1	A	2	LCC	C5M-C5-C6	-2.82	119.08	122.85
1	C	3	LCC	O2'-C6'-C4'	-2.81	98.33	103.78
1	A	2	LCC	O4'-C4'-C6'	2.77	111.84	105.97
1	A	1	LCC	C5-C4-N4	-2.75	117.36	121.48
1	C	2	LCC	O3'-C3'-C4'	2.72	119.78	112.52
1	A	2	LCC	O2'-C6'-C4'	-2.69	98.56	103.78
1	C	1	LCC	O3'-C3'-C4'	2.66	119.62	112.52
1	D	1	LCC	C5-C4-N4	-2.60	117.59	121.48
1	B	2	LCC	O2'-C6'-C4'	-2.59	98.75	103.78
1	D	2	LCC	O2'-C6'-C4'	-2.59	98.76	103.78
1	A	3	LCC	N1-C2-N3	2.57	123.49	118.81
1	A	1	LCC	O2'-C6'-C4'	-2.52	98.89	103.78
1	D	1	LCC	N1-C2-N3	2.52	123.39	118.81
1	A	1	LCC	O2-C2-N3	-2.51	118.25	122.33
1	B	1	LCC	O4'-C4'-C6'	2.51	111.27	105.97
1	D	2	LCC	O4'-C4'-C3'	-2.50	98.91	102.22
1	B	2	LCC	C3'-C2'-C1'	-2.49	94.62	100.22
1	B	3	LCC	O2'-C2'-C3'	-2.45	98.60	103.42
1	C	2	LCC	O4'-C4'-C3'	-2.43	99.00	102.22
1	D	2	LCC	O4'-C4'-C6'	2.40	111.05	105.97
1	D	1	LCC	O2'-C6'-C4'	-2.40	99.13	103.78
1	A	1	LCC	O4'-C4'-C6'	2.39	111.03	105.97
1	A	2	LCC	C5-C4-N4	-2.39	117.90	121.48
1	A	3	LCC	O4'-C4'-C3'	-2.39	99.06	102.22
1	C	1	LCC	C6'-C4'-C5'	-2.35	109.69	116.17
1	A	2	LCC	O4'-C4'-C3'	-2.33	99.13	102.22
1	C	3	LCC	O3'-C3'-C4'	2.31	118.69	112.52
1	C	2	LCC	C6'-O2'-C2'	-2.24	103.54	107.65
1	C	1	LCC	O4'-C1'-N1	2.23	111.64	108.77
1	B	1	LCC	O4'-C1'-N1	-2.22	105.91	108.77
1	D	3	LCC	N1-C2-N3	2.21	122.84	118.81
1	B	2	LCC	C2'-C1'-N1	2.18	118.46	114.22
1	C	3	LCC	C4'-O4'-C1'	-2.16	103.81	107.58
1	C	3	LCC	N1-C2-N3	2.13	122.69	118.81
1	C	2	LCC	O2'-C6'-C4'	-2.12	99.66	103.78
1	A	1	LCC	C4'-O4'-C1'	-2.11	103.89	107.58

*Continued on next page...*

Continued from previous page...

Mol	Chain	Res	Type	Atoms	Z	Observed(°)	Ideal(°)
1	C	1	LCC	C5-C4-N4	-2.09	118.35	121.48
1	A	2	LCC	C4'-O4'-C1'	-2.07	103.97	107.58
1	B	2	LCC	O2'-C2'-C1'	2.06	111.96	105.66
1	A	3	LCC	C5-C4-N4	-2.06	118.39	121.48
1	B	1	LCC	O2'-C2'-C1'	2.05	111.92	105.66
1	C	1	LCC	C5'-C4'-C3'	-2.02	111.86	117.07
1	D	2	LCC	N1-C2-N3	2.00	122.46	118.81
1	D	1	LCC	O2'-C2'-C1'	2.00	111.77	105.66
1	B	1	LCC	N1-C2-N3	2.00	122.45	118.81

There are no chirality outliers.

All (15) torsion outliers are listed below:

Mol	Chain	Res	Type	Atoms
1	B	2	LCC	O4'-C4'-C5'-O5'
1	B	2	LCC	C3'-C4'-C5'-O5'
1	B	2	LCC	C6'-C4'-C5'-O5'
1	C	2	LCC	O4'-C4'-C5'-O5'
1	A	3	LCC	O4'-C4'-C5'-O5'
1	B	3	LCC	O4'-C4'-C5'-O5'
1	B	3	LCC	C3'-C4'-C5'-O5'
1	B	3	LCC	C6'-C4'-C5'-O5'
1	C	3	LCC	O4'-C4'-C5'-O5'
1	B	1	LCC	C2'-C1'-N1-C6
1	B	1	LCC	C6'-C4'-C5'-O5'
1	B	1	LCC	C2'-C1'-N1-C2
1	B	2	LCC	C2'-C1'-N1-C2
1	C	3	LCC	C3'-C4'-C5'-O5'
1	C	3	LCC	C6'-C4'-C5'-O5'

There are no ring outliers.

4 monomers are involved in 4 short contacts:

Mol	Chain	Res	Type	Clashes	Symm-Clashes
1	B	2	LCC	1	0
1	D	1	LCC	1	0
1	C	1	LCC	1	0
1	B	1	LCC	2	0



## 5.5 Carbohydrates [i](#)

There are no monosaccharides in this entry.

## 5.6 Ligand geometry [i](#)

8 ligands are modelled in this entry.

In the following table, the Counts columns list the number of bonds (or angles) for which Mogul statistics could be retrieved, the number of bonds (or angles) that are observed in the model and the number of bonds (or angles) that are defined in the Chemical Component Dictionary. The Link column lists molecule types, if any, to which the group is linked. The Z score for a bond length (or angle) is the number of standard deviations the observed value is removed from the expected value. A bond length (or angle) with  $|Z| > 2$  is considered an outlier worth inspection. RMSZ is the root-mean-square of all Z scores of the bond lengths (or angles).

Mol	Type	Chain	Res	Link	Bond lengths			Bond angles		
					Counts	RMSZ	# Z  > 2	Counts	RMSZ	# Z  > 2
2	86P	A	101[A]	-	46,60,60	1.99	7 (15%)	51,95,95	1.57	11 (21%)
2	86P	B	101[B]	-	46,60,60	1.82	7 (15%)	51,95,95	1.66	11 (21%)
2	86P	C	101[B]	-	46,60,60	1.87	6 (13%)	51,95,95	1.66	12 (23%)
2	86P	B	101[A]	-	46,60,60	1.87	6 (13%)	51,95,95	1.78	11 (21%)
2	86P	D	101[B]	-	46,60,60	2.00	9 (19%)	51,95,95	2.08	19 (37%)
2	86P	C	101[A]	-	46,60,60	1.96	6 (13%)	51,95,95	1.61	11 (21%)
2	86P	D	101[A]	-	46,60,60	1.88	7 (15%)	51,95,95	2.01	14 (27%)
2	86P	A	101[B]	-	46,60,60	1.97	8 (17%)	51,95,95	1.74	13 (25%)

In the following table, the Chirals column lists the number of chiral outliers, the number of chiral centers analysed, the number of these observed in the model and the number defined in the Chemical Component Dictionary. Similar counts are reported in the Torsion and Rings columns. '-' means no outliers of that kind were identified.

Mol	Type	Chain	Res	Link	Chirals	Torsions	Rings
2	86P	A	101[A]	-	-	14/30/70/70	0/6/6/6
2	86P	B	101[B]	-	-	7/30/70/70	0/6/6/6
2	86P	C	101[B]	-	-	9/30/70/70	0/6/6/6
2	86P	B	101[A]	-	-	9/30/70/70	0/6/6/6
2	86P	D	101[B]	-	-	11/30/70/70	0/6/6/6
2	86P	C	101[A]	-	-	10/30/70/70	0/6/6/6
2	86P	D	101[A]	-	-	10/30/70/70	0/6/6/6
2	86P	A	101[B]	-	-	12/30/70/70	0/6/6/6

All (56) bond length outliers are listed below:

Mol	Chain	Res	Type	Atoms	Z	Observed(Å)	Ideal(Å)
2	C	101[A]	86P	C5A-C6A	-6.99	1.33	1.47
2	A	101[B]	86P	C5A-C6A	-6.98	1.33	1.47
2	C	101[B]	86P	C5A-C6A	-6.98	1.33	1.47
2	C	101[A]	86P	C5B-C6B	-6.84	1.33	1.47
2	B	101[A]	86P	C5A-C6A	-6.81	1.33	1.47
2	A	101[B]	86P	C5B-C6B	-6.72	1.33	1.47
2	A	101[A]	86P	C5B-C6B	-6.69	1.33	1.47
2	A	101[A]	86P	C5A-C6A	-6.65	1.33	1.47
2	B	101[B]	86P	C5B-C6B	-6.56	1.34	1.47
2	D	101[B]	86P	C5B-C6B	-6.55	1.34	1.47
2	D	101[B]	86P	C5A-C6A	-6.48	1.34	1.47
2	D	101[A]	86P	C5A-C6A	-6.44	1.34	1.47
2	C	101[B]	86P	C5B-C6B	-6.32	1.34	1.47
2	B	101[A]	86P	C5B-C6B	-6.30	1.34	1.47
2	B	101[B]	86P	C5A-C6A	-6.26	1.34	1.47
2	D	101[A]	86P	C5B-C6B	-6.18	1.34	1.47
2	D	101[A]	86P	O4E-C1E	4.35	1.47	1.41
2	A	101[A]	86P	PC-O1C	3.93	1.64	1.50
2	A	101[A]	86P	PC-O2C	3.61	1.72	1.55
2	B	101[A]	86P	PC-O1C	3.55	1.63	1.50
2	D	101[B]	86P	O4D-C1D	3.53	1.46	1.41
2	D	101[B]	86P	C6B-N1B	3.50	1.43	1.37
2	C	101[A]	86P	PC-O1C	3.42	1.63	1.50
2	B	101[A]	86P	C5A-C4A	-3.41	1.34	1.43
2	A	101[B]	86P	C5A-C4A	-3.40	1.34	1.43
2	A	101[A]	86P	C5A-C4A	-3.34	1.34	1.43
2	D	101[B]	86P	PC-O1C	3.33	1.62	1.50
2	C	101[A]	86P	C5B-C4B	-3.29	1.34	1.43
2	A	101[B]	86P	C5B-C4B	-3.28	1.34	1.43
2	C	101[B]	86P	C5A-C4A	-3.27	1.34	1.43
2	A	101[A]	86P	C5B-C4B	-3.26	1.34	1.43
2	D	101[B]	86P	C5A-C4A	-3.21	1.34	1.43
2	A	101[B]	86P	PC-O1C	3.18	1.62	1.50
2	C	101[A]	86P	C5A-C4A	-3.15	1.35	1.43
2	D	101[A]	86P	C5B-C4B	-3.15	1.35	1.43
2	B	101[B]	86P	C5A-C4A	-3.11	1.35	1.43
2	B	101[A]	86P	O4D-C1D	3.08	1.45	1.41
2	C	101[B]	86P	C5B-C4B	-3.07	1.35	1.43
2	D	101[A]	86P	C5A-C4A	-3.03	1.35	1.43
2	B	101[A]	86P	C5B-C4B	-3.02	1.35	1.43
2	D	101[B]	86P	O4E-C1E	2.94	1.45	1.41
2	B	101[B]	86P	C5B-C4B	-2.93	1.35	1.43

*Continued on next page...*

*Continued from previous page...*

Mol	Chain	Res	Type	Atoms	Z	Observed(Å)	Ideal(Å)
2	C	101[B]	86P	PC-O1C	2.91	1.61	1.50
2	D	101[A]	86P	O4D-C1D	2.91	1.45	1.41
2	A	101[B]	86P	O3D-C3D	2.88	1.49	1.43
2	D	101[B]	86P	C5B-C4B	-2.87	1.35	1.43
2	A	101[B]	86P	O4E-C1E	2.87	1.45	1.41
2	A	101[A]	86P	O4E-C1E	2.84	1.45	1.41
2	D	101[A]	86P	PC-O1C	2.83	1.60	1.50
2	B	101[B]	86P	PC-O2C	-2.72	1.42	1.55
2	C	101[A]	86P	O4E-C1E	2.69	1.44	1.41
2	C	101[B]	86P	O4E-C1E	2.67	1.44	1.41
2	B	101[B]	86P	O4E-C1E	2.53	1.44	1.41
2	A	101[B]	86P	PB-O1B	-2.44	1.43	1.55
2	B	101[B]	86P	O3D-C3D	2.05	1.47	1.43
2	D	101[B]	86P	PA-O5D	2.02	1.67	1.59

All (102) bond angle outliers are listed below:

Mol	Chain	Res	Type	Atoms	Z	Observed(°)	Ideal(°)
2	D	101[B]	86P	PG-O3C-PC	-5.84	112.80	132.83
2	D	101[A]	86P	PG-O3C-PC	-5.09	115.37	132.83
2	D	101[A]	86P	PC-O3B-PB	-5.02	115.59	132.83
2	B	101[A]	86P	PG-O3C-PC	-4.44	117.59	132.83
2	B	101[B]	86P	C2B-N1B-C6B	-4.11	117.53	125.10
2	C	101[A]	86P	C2B-N1B-C6B	-4.01	117.72	125.10
2	D	101[B]	86P	PB-O3A-PA	-3.96	119.22	132.83
2	A	101[B]	86P	O4D-C4D-C5D	-3.95	96.39	109.37
2	D	101[B]	86P	PC-O3B-PB	-3.95	119.29	132.83
2	A	101[A]	86P	C2B-N1B-C6B	-3.93	117.86	125.10
2	D	101[A]	86P	C3D-C2D-C1D	3.83	106.75	100.98
2	C	101[B]	86P	C2B-N1B-C6B	-3.81	118.08	125.10
2	D	101[A]	86P	C2A-N1A-C6A	-3.80	118.11	125.10
2	B	101[A]	86P	C2A-N1A-C6A	-3.79	118.12	125.10
2	B	101[A]	86P	C2B-N1B-C6B	-3.76	118.18	125.10
2	A	101[B]	86P	C2B-N1B-C6B	-3.75	118.19	125.10
2	B	101[A]	86P	C3E-C2E-C1E	3.75	106.62	100.98
2	D	101[A]	86P	C5B-C6B-N1B	3.74	120.56	113.95
2	B	101[B]	86P	C2A-N1A-C6A	-3.70	118.28	125.10
2	D	101[B]	86P	C5A-C6A-N1A	3.68	120.44	113.95
2	A	101[B]	86P	C5B-C6B-N1B	3.67	120.44	113.95
2	C	101[B]	86P	C2A-N1A-C6A	-3.66	118.36	125.10
2	D	101[B]	86P	O4E-C1E-C2E	-3.62	101.64	106.93
2	A	101[A]	86P	C5B-C6B-N1B	3.61	120.32	113.95

*Continued on next page...*

*Continued from previous page...*

Mol	Chain	Res	Type	Atoms	Z	Observed(°)	Ideal(°)
2	B	101[B]	86P	C3D-C2D-C1D	3.59	106.38	100.98
2	C	101[B]	86P	C5B-C6B-N1B	3.56	120.24	113.95
2	B	101[A]	86P	C5A-C6A-N1A	3.56	120.24	113.95
2	A	101[A]	86P	C2A-N1A-C6A	-3.55	118.57	125.10
2	D	101[B]	86P	C2A-N1A-C6A	-3.53	118.59	125.10
2	C	101[A]	86P	C2A-N1A-C6A	-3.52	118.62	125.10
2	A	101[B]	86P	C2A-N1A-C6A	-3.49	118.67	125.10
2	D	101[B]	86P	C2B-N1B-C6B	-3.44	118.77	125.10
2	D	101[A]	86P	C2B-N1B-C6B	-3.39	118.85	125.10
2	B	101[A]	86P	C5B-C6B-N1B	3.38	119.92	113.95
2	C	101[A]	86P	C5B-C6B-N1B	3.38	119.92	113.95
2	C	101[B]	86P	PC-O3B-PB	-3.32	121.45	132.83
2	D	101[A]	86P	O1G-PG-O2G	3.30	128.58	112.24
2	B	101[B]	86P	C5B-C6B-N1B	3.27	119.72	113.95
2	A	101[B]	86P	C5A-C6A-N1A	3.26	119.71	113.95
2	C	101[B]	86P	C5A-C6A-N1A	3.26	119.70	113.95
2	C	101[A]	86P	C3D-C2D-C1D	3.24	105.85	100.98
2	A	101[B]	86P	C3D-C2D-C1D	3.23	105.85	100.98
2	D	101[B]	86P	C3D-C2D-C1D	3.15	105.72	100.98
2	B	101[B]	86P	C5A-C6A-N1A	3.11	119.45	113.95
2	C	101[A]	86P	C5A-C6A-N1A	3.09	119.41	113.95
2	A	101[A]	86P	C3D-C2D-C1D	3.08	105.62	100.98
2	B	101[B]	86P	C3E-C2E-C1E	3.07	105.60	100.98
2	B	101[B]	86P	O2C-PC-O1C	3.01	127.11	112.24
2	B	101[A]	86P	PB-O3A-PA	-3.00	122.53	132.83
2	A	101[A]	86P	C5A-C6A-N1A	2.96	119.19	113.95
2	B	101[A]	86P	C3D-C2D-C1D	2.96	105.43	100.98
2	D	101[A]	86P	C5A-C6A-N1A	2.92	119.11	113.95
2	D	101[A]	86P	O6B-C6B-N1B	-2.83	117.30	120.65
2	D	101[A]	86P	PB-O3A-PA	-2.80	123.21	132.83
2	A	101[A]	86P	C3E-C2E-C1E	2.75	105.12	100.98
2	D	101[B]	86P	O1G-PG-O5E	2.74	120.46	107.75
2	C	101[A]	86P	PC-O3B-PB	-2.73	123.44	132.83
2	A	101[B]	86P	PC-O3B-PB	-2.72	123.48	132.83
2	A	101[B]	86P	C3E-C2E-C1E	2.69	105.02	100.98
2	C	101[B]	86P	O6B-C6B-N1B	-2.66	117.50	120.65
2	D	101[B]	86P	O6B-C6B-C5B	-2.63	119.23	124.37
2	C	101[B]	86P	C3E-C2E-C1E	2.60	104.90	100.98
2	D	101[B]	86P	O4E-C4E-C3E	-2.59	99.99	105.11
2	C	101[B]	86P	C3D-C2D-C1D	2.59	104.88	100.98
2	A	101[B]	86P	O6B-C6B-N1B	-2.59	117.59	120.65
2	B	101[A]	86P	O4E-C4E-C5E	-2.57	100.91	109.37

*Continued on next page...*

Continued from previous page...

Mol	Chain	Res	Type	Atoms	Z	Observed(°)	Ideal(°)
2	A	101[B]	86P	O1B-PB-O2B	2.54	124.79	112.24
2	C	101[A]	86P	PG-O3C-PC	-2.52	124.17	132.83
2	D	101[B]	86P	N1A-C2A-N3A	-2.40	118.83	123.32
2	D	101[B]	86P	C3E-C2E-C1E	2.39	104.58	100.98
2	A	101[A]	86P	C8A-N7A-C5A	2.34	107.44	102.99
2	D	101[B]	86P	N2B-C2B-N1B	2.33	121.68	116.71
2	D	101[A]	86P	O5E-C5E-C4E	-2.32	101.02	108.99
2	D	101[B]	86P	O4D-C4D-C5D	-2.31	101.77	109.37
2	B	101[B]	86P	O6A-C6A-N1A	-2.30	117.94	120.65
2	C	101[B]	86P	PG-O3C-PC	-2.27	125.04	132.83
2	B	101[A]	86P	PC-O3B-PB	-2.26	125.06	132.83
2	C	101[B]	86P	O4E-C4E-C5E	-2.26	101.93	109.37
2	B	101[B]	86P	O2D-C2D-C3D	-2.26	104.51	111.82
2	B	101[A]	86P	C8A-N7A-C5A	2.22	107.23	102.99
2	A	101[B]	86P	N1A-C2A-N3A	-2.22	119.18	123.32
2	A	101[B]	86P	C8A-N7A-C5A	2.16	107.11	102.99
2	D	101[B]	86P	O6A-C6A-C5A	-2.15	120.17	124.37
2	D	101[A]	86P	C8B-N7B-C5B	2.15	107.08	102.99
2	B	101[B]	86P	PG-O3C-PC	-2.15	125.46	132.83
2	D	101[B]	86P	O6B-C6B-N1B	2.13	123.16	120.65
2	D	101[A]	86P	N1B-C2B-N3B	-2.11	119.37	123.32
2	D	101[B]	86P	C8A-N7A-C5A	2.10	107.00	102.99
2	C	101[A]	86P	C3E-C2E-C1E	2.10	104.14	100.98
2	C	101[B]	86P	C8A-N7A-C5A	2.10	106.99	102.99
2	D	101[B]	86P	C5B-C6B-N1B	2.07	117.61	113.95
2	C	101[A]	86P	C8A-N7A-C5A	2.07	106.92	102.99
2	D	101[A]	86P	O2D-C2D-C3D	-2.07	105.14	111.82
2	C	101[A]	86P	C8B-N7B-C5B	2.06	106.92	102.99
2	C	101[A]	86P	O6B-C6B-C5B	-2.06	120.34	124.37
2	A	101[B]	86P	O6A-C6A-C5A	-2.04	120.39	124.37
2	A	101[A]	86P	N1A-C2A-N3A	-2.02	119.55	123.32
2	A	101[A]	86P	C8B-N7B-C5B	2.01	106.81	102.99
2	A	101[A]	86P	N2A-C2A-N1A	2.01	120.99	116.71
2	C	101[B]	86P	PB-O3A-PA	-2.01	125.94	132.83
2	B	101[B]	86P	C8A-N7A-C5A	2.00	106.81	102.99
2	A	101[A]	86P	O6B-C6B-N1B	-2.00	118.28	120.65

There are no chirality outliers.

All (82) torsion outliers are listed below:

Mol	Chain	Res	Type	Atoms
2	A	101[A]	86P	C5D-O5D-PA-O3A

Continued on next page...

*Continued from previous page...*

Mol	Chain	Res	Type	Atoms
2	A	101[A]	86P	C5D-O5D-PA-O2A
2	A	101[A]	86P	C5E-O5E-PG-O1G
2	A	101[A]	86P	C5E-O5E-PG-O2G
2	A	101[B]	86P	C3D-C4D-C5D-O5D
2	A	101[B]	86P	O4D-C4D-C5D-O5D
2	A	101[B]	86P	O4E-C4E-C5E-O5E
2	B	101[A]	86P	C5D-O5D-PA-O3A
2	B	101[A]	86P	C5D-O5D-PA-O1A
2	B	101[A]	86P	PC-O3C-PG-O5E
2	B	101[B]	86P	PC-O3C-PG-O5E
2	B	101[B]	86P	O4E-C4E-C5E-O5E
2	C	101[A]	86P	C5E-O5E-PG-O1G
2	C	101[A]	86P	O4D-C4D-C5D-O5D
2	C	101[B]	86P	C5E-O5E-PG-O1G
2	C	101[B]	86P	C5E-O5E-PG-O3C
2	D	101[A]	86P	C5D-O5D-PA-O2A
2	D	101[A]	86P	C4E-C5E-O5E-PG
2	D	101[B]	86P	C5D-O5D-PA-O2A
2	D	101[B]	86P	PC-O3C-PG-O5E
2	D	101[B]	86P	C5E-O5E-PG-O1G
2	A	101[B]	86P	C3E-C4E-C5E-O5E
2	B	101[A]	86P	O4D-C4D-C5D-O5D
2	B	101[B]	86P	C3E-C4E-C5E-O5E
2	C	101[A]	86P	C3D-C4D-C5D-O5D
2	D	101[A]	86P	C3E-C4E-C5E-O5E
2	D	101[B]	86P	O4D-C4D-C5D-O5D
2	D	101[B]	86P	O4E-C4E-C5E-O5E
2	B	101[A]	86P	C3D-C4D-C5D-O5D
2	B	101[B]	86P	O4D-C4D-C5D-O5D
2	C	101[B]	86P	O4D-C4D-C5D-O5D
2	C	101[B]	86P	C3D-C4D-C5D-O5D
2	B	101[B]	86P	C3D-C4D-C5D-O5D
2	C	101[B]	86P	C3E-C4E-C5E-O5E
2	D	101[A]	86P	O4E-C4E-C5E-O5E
2	C	101[B]	86P	O4E-C4E-C5E-O5E
2	A	101[A]	86P	PA-O3A-PB-O2B
2	D	101[A]	86P	PC-O3B-PB-O2B
2	B	101[A]	86P	PA-O3A-PB-O3B
2	C	101[A]	86P	PC-O3B-PB-O3A
2	A	101[A]	86P	PC-O3C-PG-O5E
2	A	101[B]	86P	PC-O3C-PG-O5E
2	C	101[B]	86P	PC-O3C-PG-O5E

*Continued on next page...*

*Continued from previous page...*

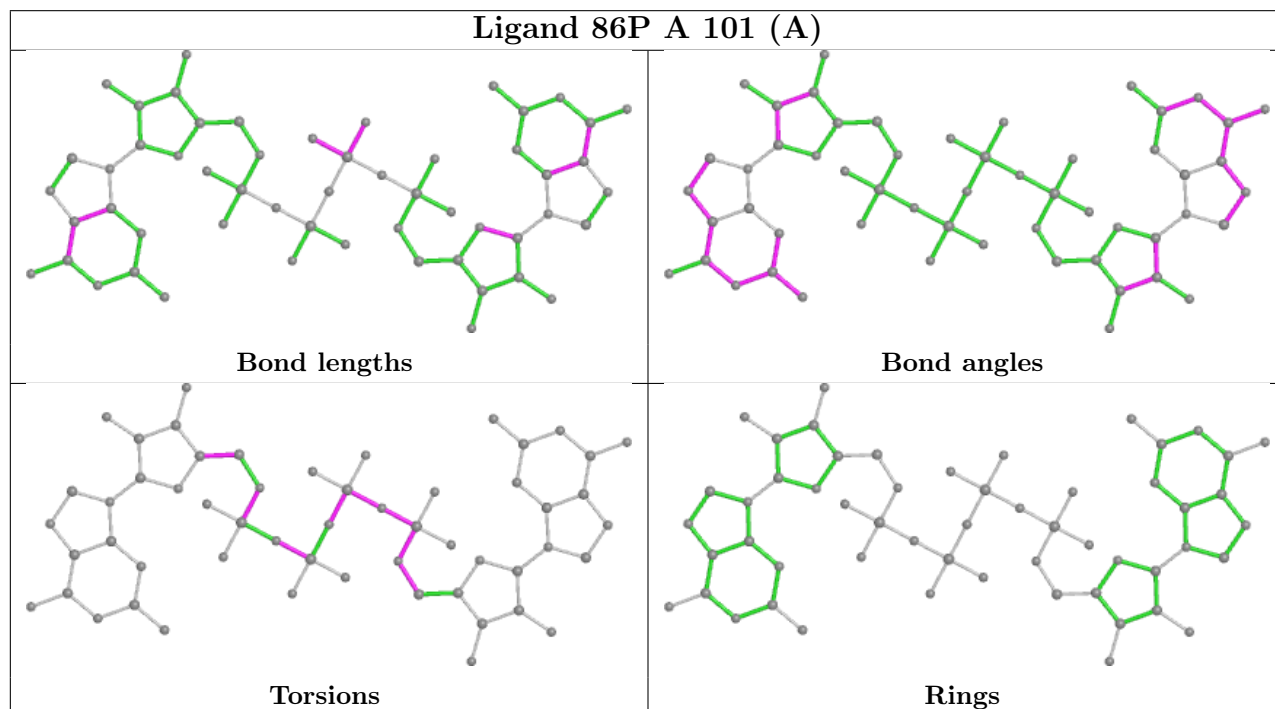
Mol	Chain	Res	Type	Atoms
2	D	101[B]	86P	PB-O3A-PA-O5D
2	D	101[B]	86P	C3D-C4D-C5D-O5D
2	A	101[A]	86P	C4E-C5E-O5E-PG
2	A	101[A]	86P	C5E-O5E-PG-O3C
2	C	101[A]	86P	C5E-O5E-PG-O3C
2	D	101[B]	86P	C5E-O5E-PG-O3C
2	D	101[A]	86P	C5D-O5D-PA-O1A
2	D	101[A]	86P	C5E-O5E-PG-O2G
2	D	101[B]	86P	C5E-O5E-PG-O2G
2	A	101[A]	86P	O4D-C4D-C5D-O5D
2	A	101[B]	86P	PB-O3B-PC-O3C
2	A	101[B]	86P	PB-O3A-PA-O2A
2	A	101[B]	86P	PG-O3C-PC-O1C
2	D	101[A]	86P	PC-O3B-PB-O1B
2	D	101[B]	86P	C4D-C5D-O5D-PA
2	B	101[B]	86P	PB-O3B-PC-O3C
2	A	101[A]	86P	PC-O3C-PG-O2G
2	B	101[A]	86P	PC-O3B-PB-O2B
2	C	101[A]	86P	PB-O3A-PA-O2A
2	C	101[A]	86P	PG-O3C-PC-O1C
2	C	101[B]	86P	PG-O3C-PC-O1C
2	D	101[B]	86P	PC-O3B-PB-O2B
2	A	101[A]	86P	PB-O3B-PC-O3C
2	A	101[A]	86P	C3D-C4D-C5D-O5D
2	D	101[A]	86P	C5D-O5D-PA-O3A
2	D	101[A]	86P	C5E-O5E-PG-O3C
2	A	101[A]	86P	PG-O3C-PC-O1C
2	A	101[A]	86P	PG-O3C-PC-O2C
2	A	101[B]	86P	PA-O3A-PB-O1B
2	A	101[B]	86P	PB-O3B-PC-O2C
2	A	101[B]	86P	PG-O3C-PC-O2C
2	A	101[B]	86P	PC-O3C-PG-O2G
2	B	101[A]	86P	PA-O3A-PB-O1B
2	B	101[A]	86P	PC-O3B-PB-O1B
2	B	101[B]	86P	PC-O3C-PG-O2G
2	C	101[A]	86P	PB-O3A-PA-O1A
2	C	101[A]	86P	PC-O3B-PB-O2B
2	C	101[B]	86P	PG-O3C-PC-O2C
2	C	101[A]	86P	C5E-O5E-PG-O2G

There are no ring outliers.

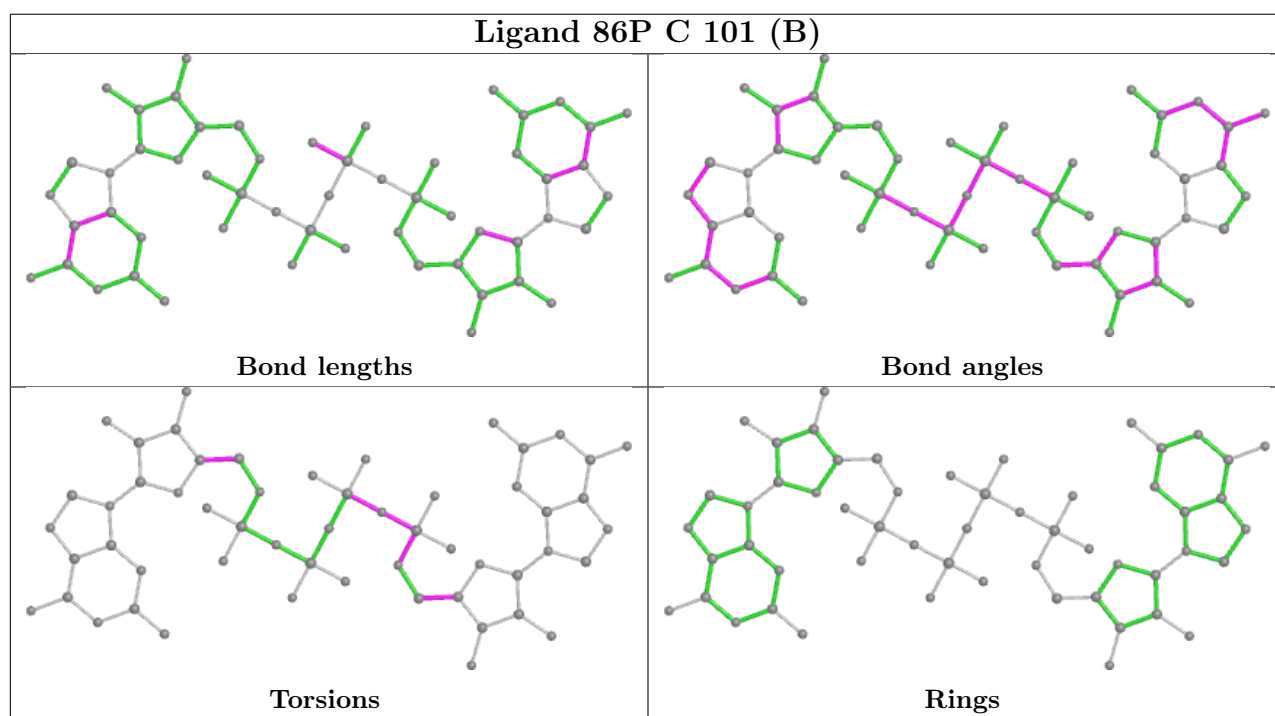
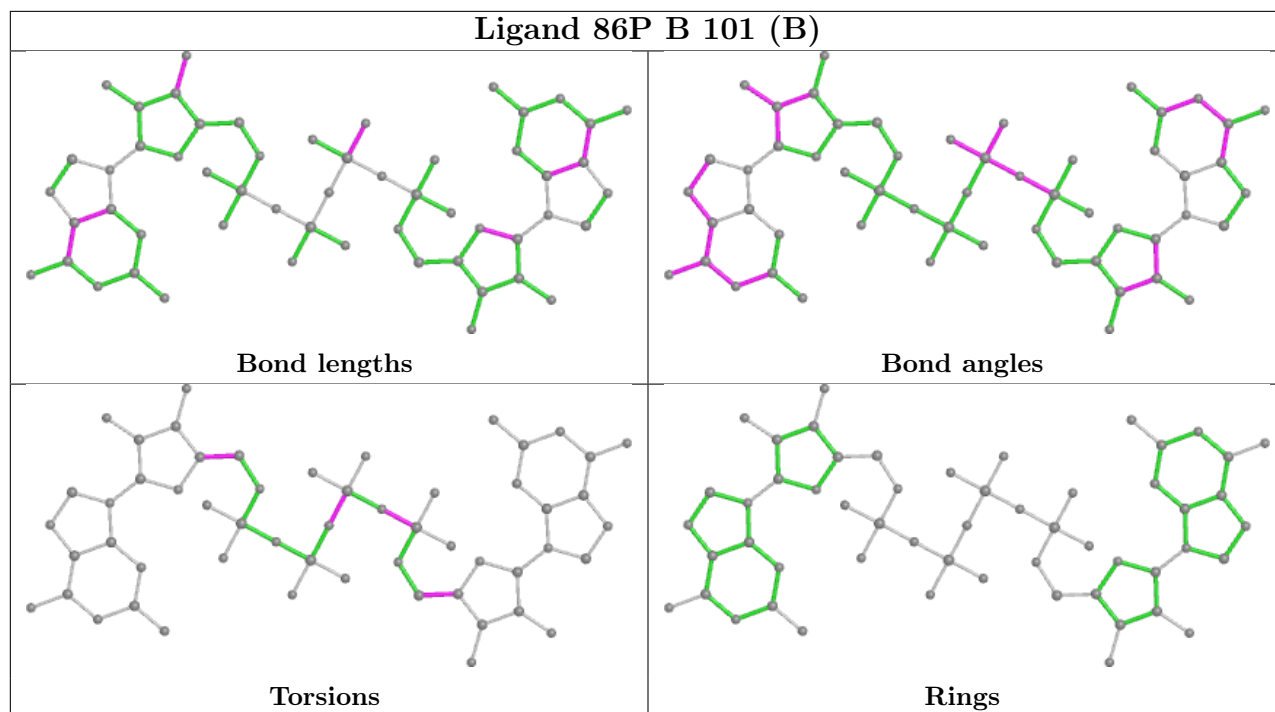
7 monomers are involved in 24 short contacts:

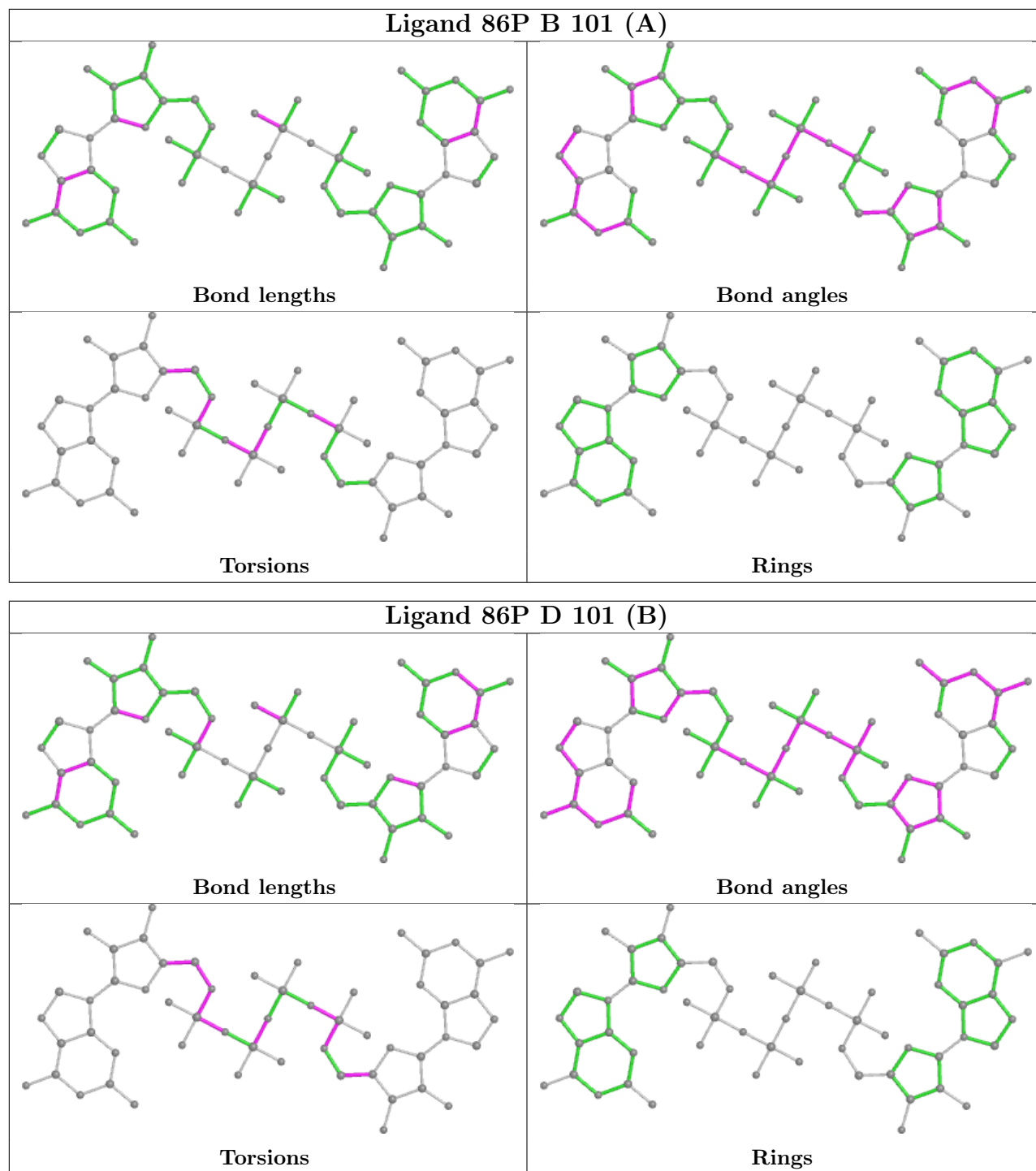
Mol	Chain	Res	Type	Clashes	Symm-Clashes
2	A	101[A]	86P	4	0
2	B	101[B]	86P	3	0
2	C	101[B]	86P	2	0
2	B	101[A]	86P	3	0
2	D	101[B]	86P	7	0
2	C	101[A]	86P	4	0
2	D	101[A]	86P	1	0

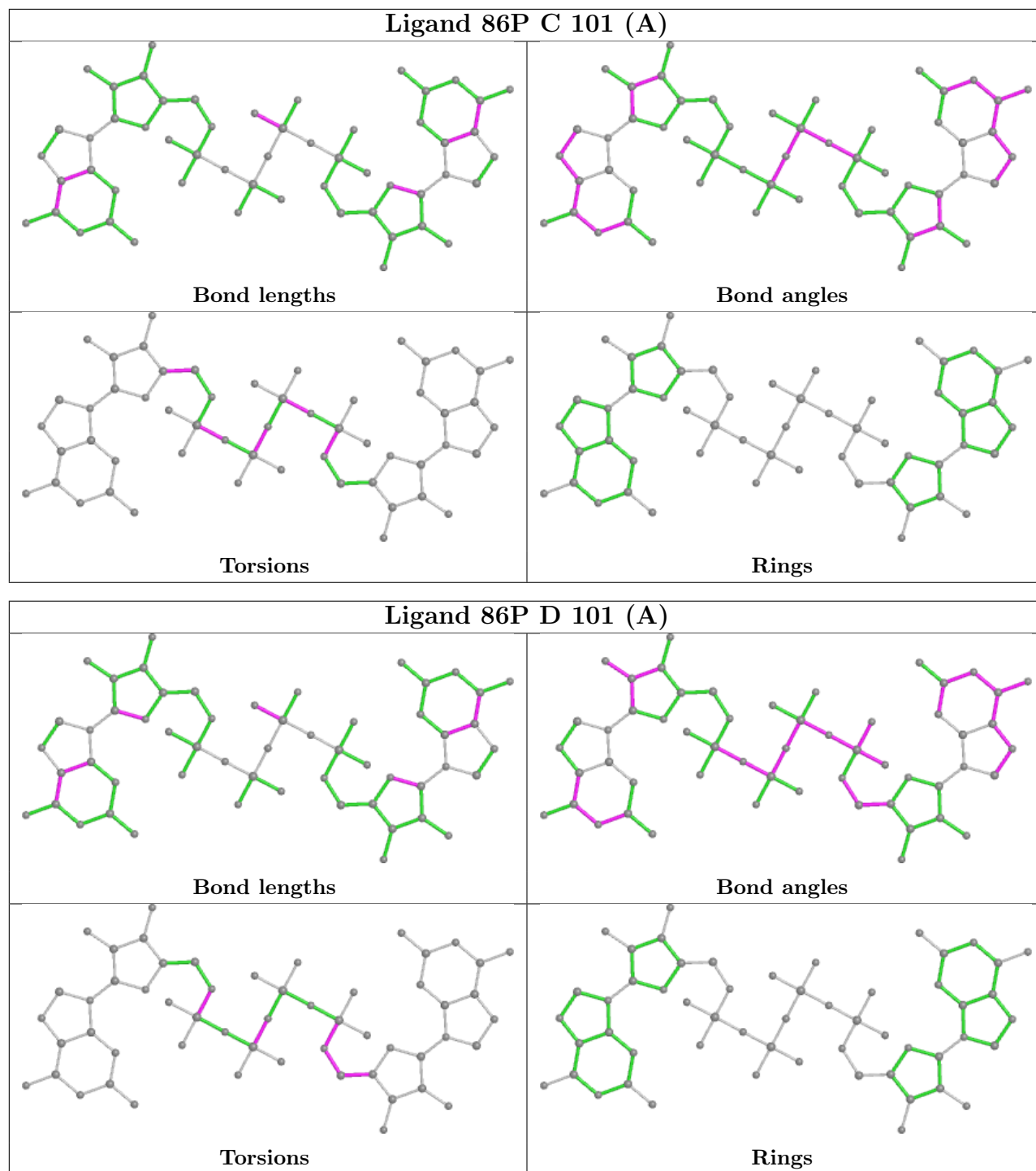
The following is a two-dimensional graphical depiction of Mogul quality analysis of bond lengths, bond angles, torsion angles, and ring geometry for all instances of the Ligand of Interest. In addition, ligands with molecular weight > 250 and outliers as shown on the validation Tables will also be included. For torsion angles, if less than 5% of the Mogul distribution of torsion angles is within 10 degrees of the torsion angle in question, then that torsion angle is considered an outlier. Any bond that is central to one or more torsion angles identified as an outlier by Mogul will be highlighted in the graph. For rings, the root-mean-square deviation (RMSD) between the ring in question and similar rings identified by Mogul is calculated over all ring torsion angles. If the average RMSD is greater than 60 degrees and the minimal RMSD between the ring in question and any Mogul-identified rings is also greater than 60 degrees, then that ring is considered an outlier. The outliers are highlighted in purple. The color gray indicates Mogul did not find sufficient equivalents in the CSD to analyse the geometry.

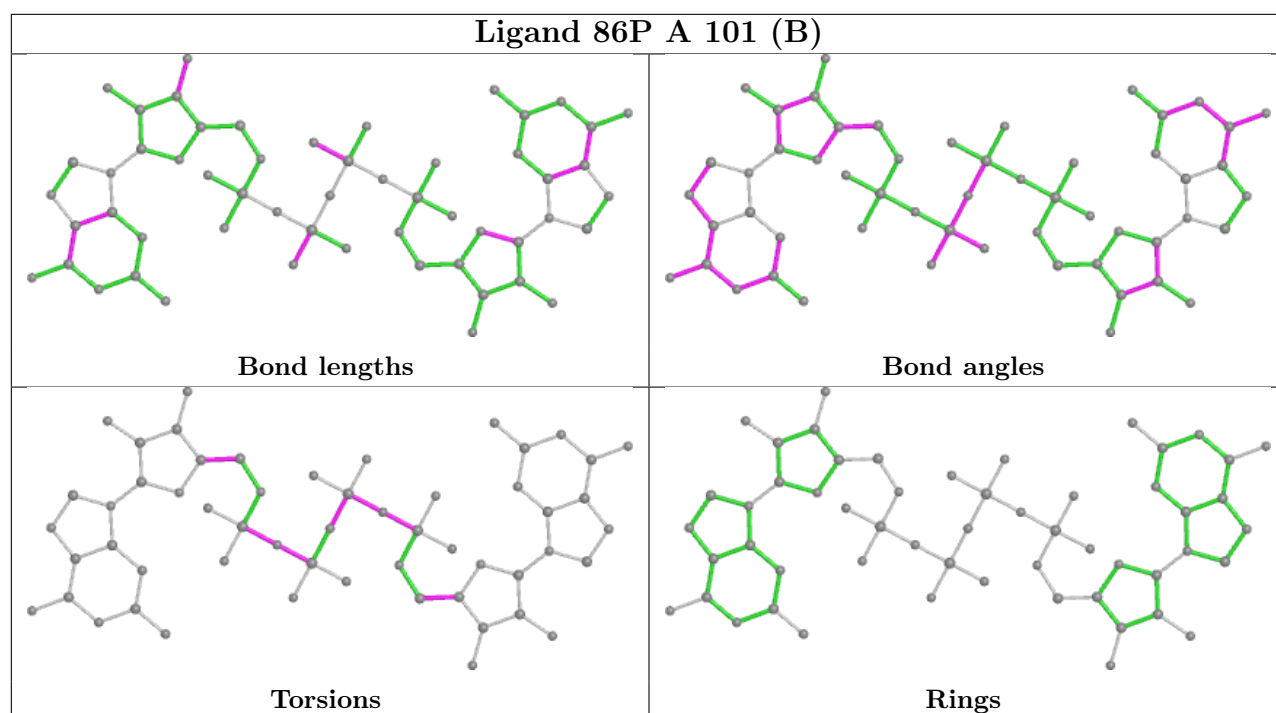












## 5.7 Other polymers [i](#)

There are no such residues in this entry.

## 5.8 Polymer linkage issues [i](#)

There are no chain breaks in this entry.

## 6 Fit of model and data [i](#)

### 6.1 Protein, DNA and RNA chains [i](#)

In the following table, the column labelled ‘#RSRZ > 2’ contains the number (and percentage) of RSRZ outliers, followed by percent RSRZ outliers for the chain as percentile scores relative to all X-ray entries and entries of similar resolution. The OWAB column contains the minimum, median, 95<sup>th</sup> percentile and maximum values of the occupancy-weighted average B-factor per residue. The column labelled ‘Q < 0.9’ lists the number of (and percentage) of residues with an average occupancy less than 0.9.

Mol	Chain	Analysed	<RSRZ>	#RSRZ>2	OWAB(Å <sup>2</sup> )	Q<0.9
1	A	11/14 (78%)	-1.38	0 100 100	74, 86, 111, 115	0
1	B	11/14 (78%)	-1.41	0 100 100	67, 88, 114, 118	0
1	C	11/14 (78%)	-1.45	0 100 100	70, 89, 112, 116	0
1	D	11/14 (78%)	-1.32	0 100 100	71, 89, 109, 114	0
All	All	44/56 (78%)	-1.39	0 100 100	67, 94, 114, 118	0

There are no RSRZ outliers to report.

### 6.2 Non-standard residues in protein, DNA, RNA chains [i](#)

In the following table, the Atoms column lists the number of modelled atoms in the group and the number defined in the chemical component dictionary. The B-factors column lists the minimum, median, 95<sup>th</sup> percentile and maximum values of B factors of atoms in the group. The column labelled ‘Q < 0.9’ lists the number of atoms with occupancy less than 0.9.

Mol	Type	Chain	Res	Atoms	RSCC	RSR	B-factors(Å <sup>2</sup> )	Q<0.9
1	LCC	A	1	19/23	0.91	0.17	73,84,102,104	0
1	LCC	C	1	19/23	0.94	0.17	73,82,106,109	0
1	LCC	B	3	22/23	0.94	0.16	63,74,82,104	0
1	LCC	C	3	22/23	0.94	0.15	58,67,75,90	0
1	LCC	D	3	22/23	0.94	0.14	59,68,76,97	0
1	LCC	A	3	22/23	0.95	0.15	57,67,82,109	0
1	LCC	D	2	22/23	0.96	0.11	70,75,86,92	0
1	LCC	B	1	19/23	0.96	0.14	64,74,101,106	0
1	LCC	D	1	19/23	0.96	0.11	62,77,98,105	0
1	LCC	B	2	22/23	0.96	0.10	65,76,88,100	0
1	LCC	C	2	22/23	0.96	0.09	61,74,81,84	0
1	LCC	A	2	22/23	0.97	0.11	68,74,85,94	0

### 6.3 Carbohydrates

There are no monosaccharides in this entry.

### 6.4 Ligands

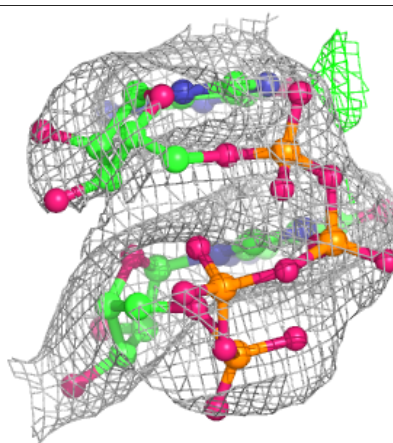
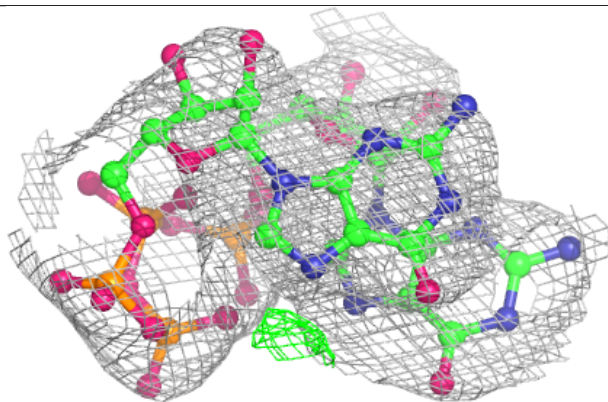
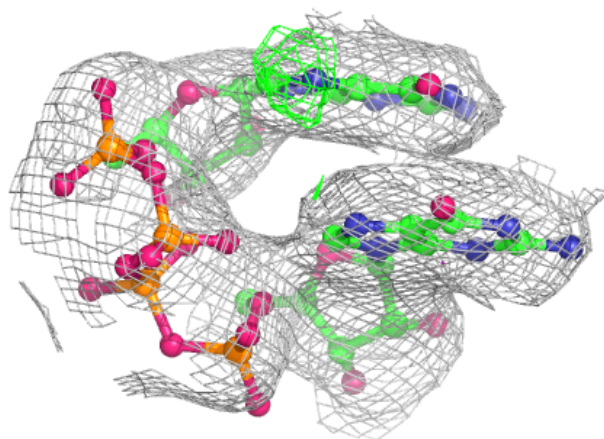
In the following table, the Atoms column lists the number of modelled atoms in the group and the number defined in the chemical component dictionary. The B-factors column lists the minimum, median, 95<sup>th</sup> percentile and maximum values of B factors of atoms in the group. The column labelled 'Q< 0.9' lists the number of atoms with occupancy less than 0.9.

Mol	Type	Chain	Res	Atoms	RSCC	RSR	B-factors(Å <sup>2</sup> )	Q<0.9
2	86P	B	101[A]	55/55	0.94	0.10	66,108,138,150	55
2	86P	B	101[B]	55/55	0.94	0.10	52,69,98,113	55
2	86P	D	101[A]	55/55	0.94	0.11	56,71,101,101	55
2	86P	D	101[B]	55/55	0.94	0.11	66,100,133,138	55
2	86P	C	101[A]	55/55	0.95	0.10	66,88,112,125	55
2	86P	C	101[B]	55/55	0.95	0.10	58,88,116,121	55
2	86P	A	101[A]	55/55	0.95	0.10	68,83,109,120	55
2	86P	A	101[B]	55/55	0.95	0.10	69,86,120,128	55

The following is a graphical depiction of the model fit to experimental electron density of all instances of the Ligand of Interest. In addition, ligands with molecular weight > 250 and outliers as shown on the geometry validation Tables will also be included. Each fit is shown from different orientation to approximate a three-dimensional view.

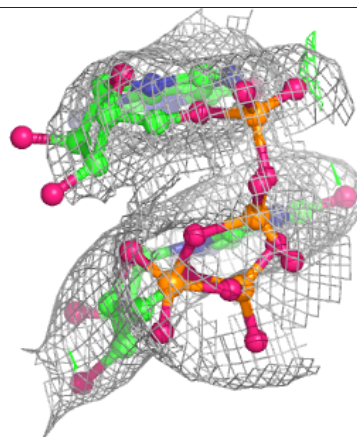
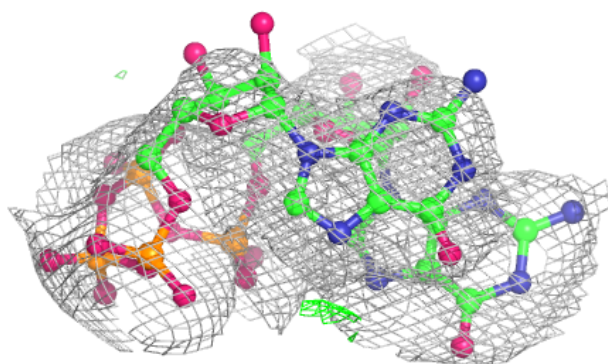
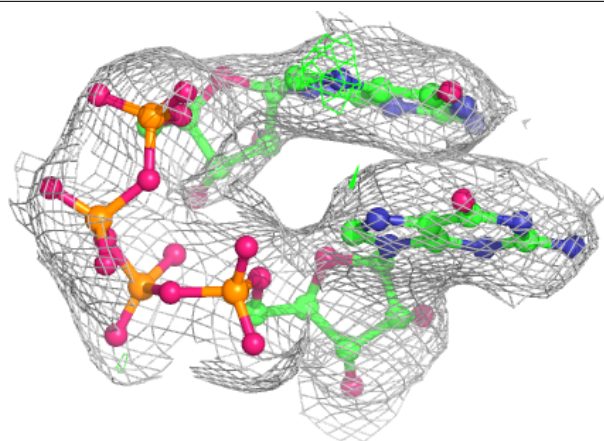
**Electron density around 86P B 101 (A):**

$2mF_o-DF_c$  (at 0.7 rmsd) in gray  
 $mF_o-DF_c$  (at 3 rmsd) in purple (negative)  
and green (positive)

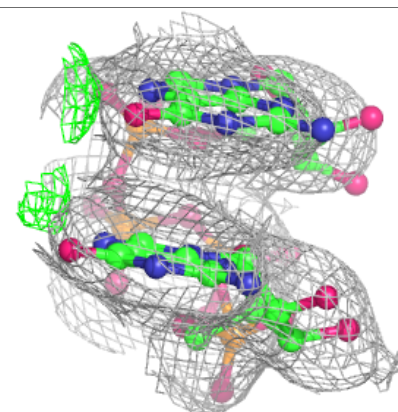
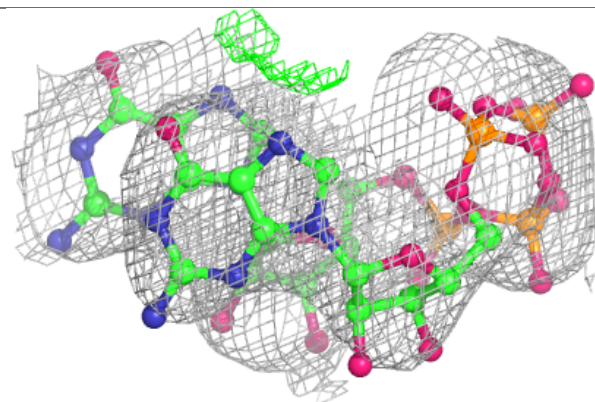
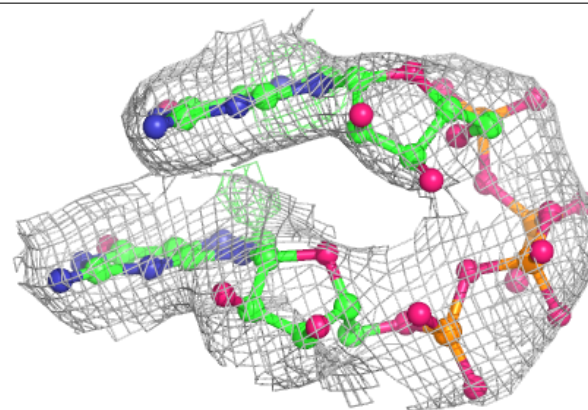


**Electron density around 86P B 101 (B):**

$2mF_o-DF_c$  (at 0.7 rmsd) in gray  
 $mF_o-DF_c$  (at 3 rmsd) in purple (negative)  
and green (positive)

**Electron density around 86P D 101 (A):**

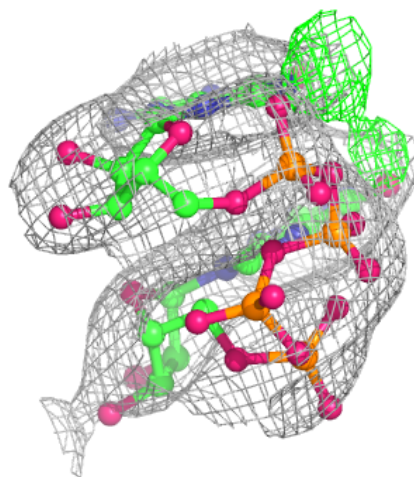
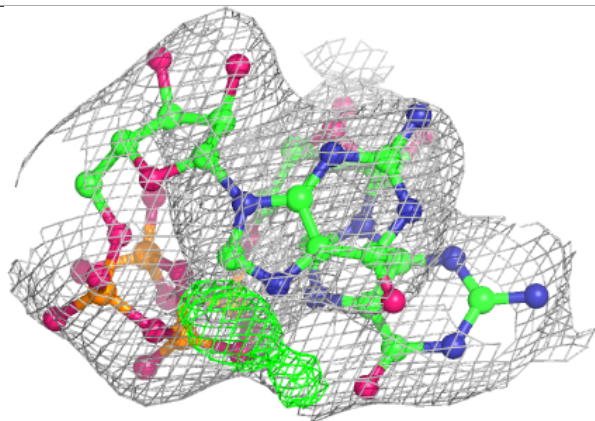
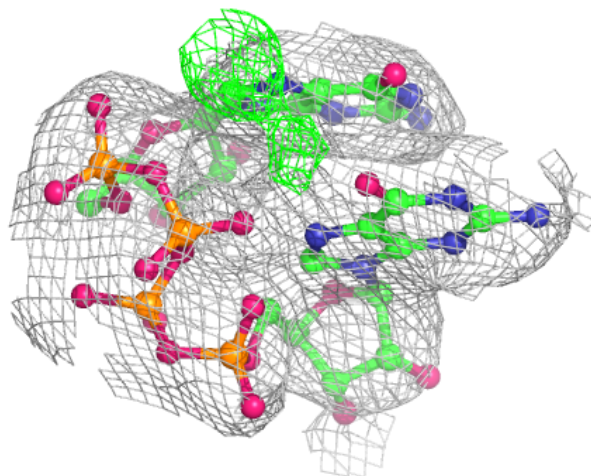
$2mF_o-DF_c$  (at 0.7 rmsd) in gray  
 $mF_o-DF_c$  (at 3 rmsd) in purple (negative)  
and green (positive)





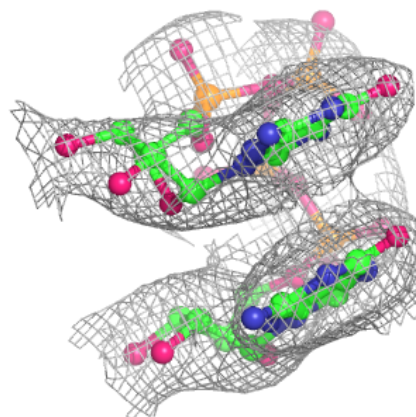
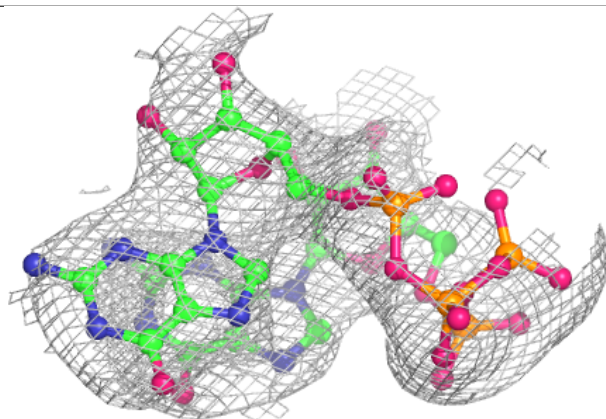
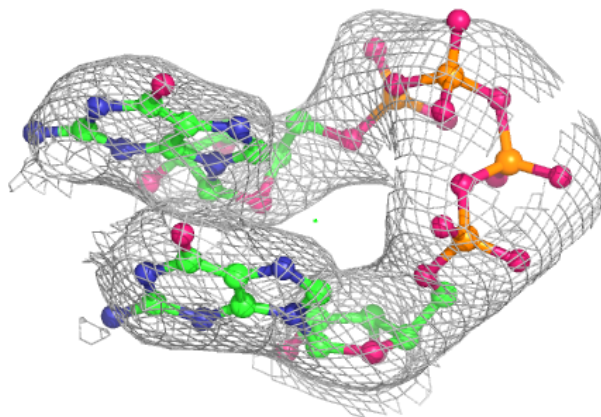
**Electron density around 86P D 101 (B):**

$2mF_o-DF_c$  (at 0.7 rmsd) in gray  
 $mF_o-DF_c$  (at 3 rmsd) in purple (negative)  
and green (positive)



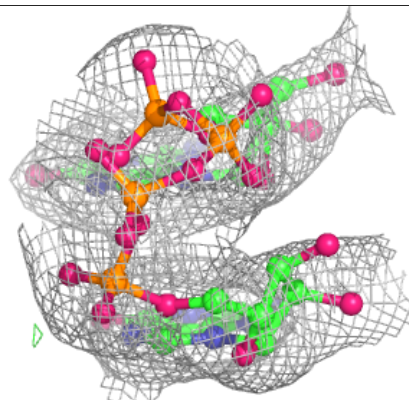
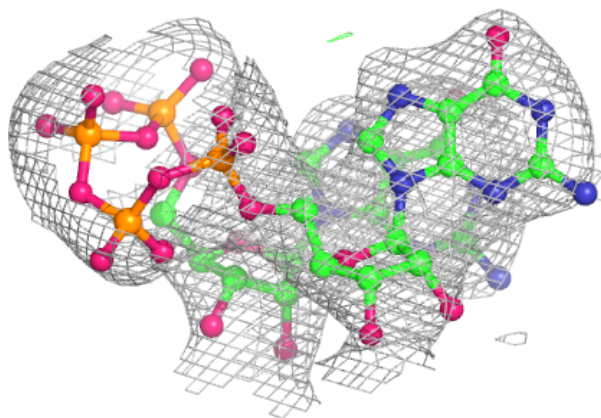
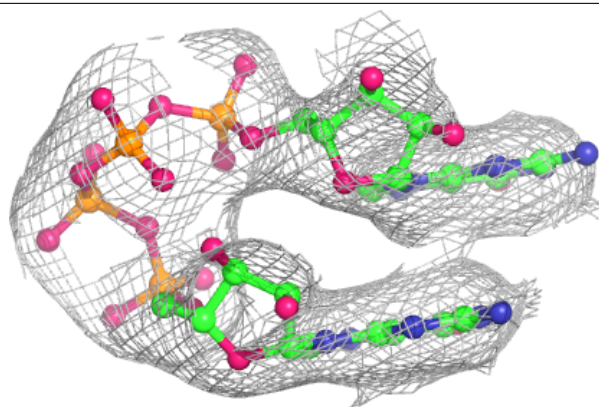
**Electron density around 86P C 101 (A):**

$2mF_o-DF_c$  (at 0.7 rmsd) in gray  
 $mF_o-DF_c$  (at 3 rmsd) in purple (negative)  
and green (positive)

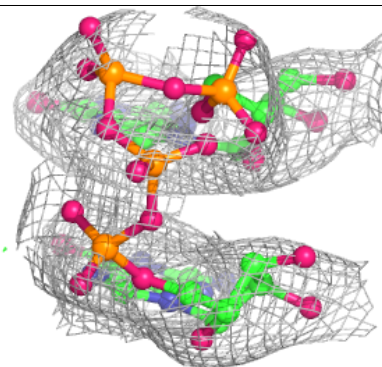
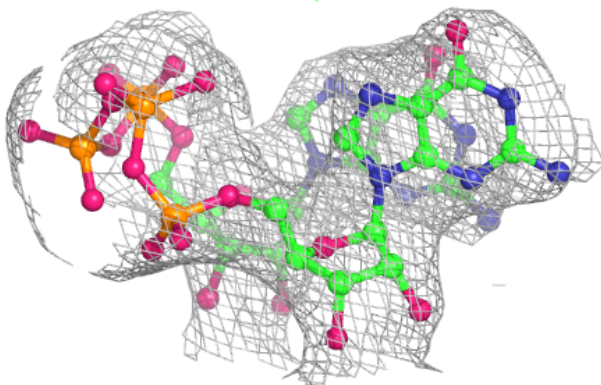
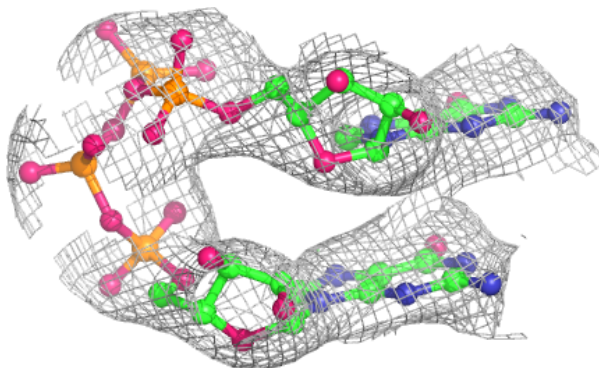


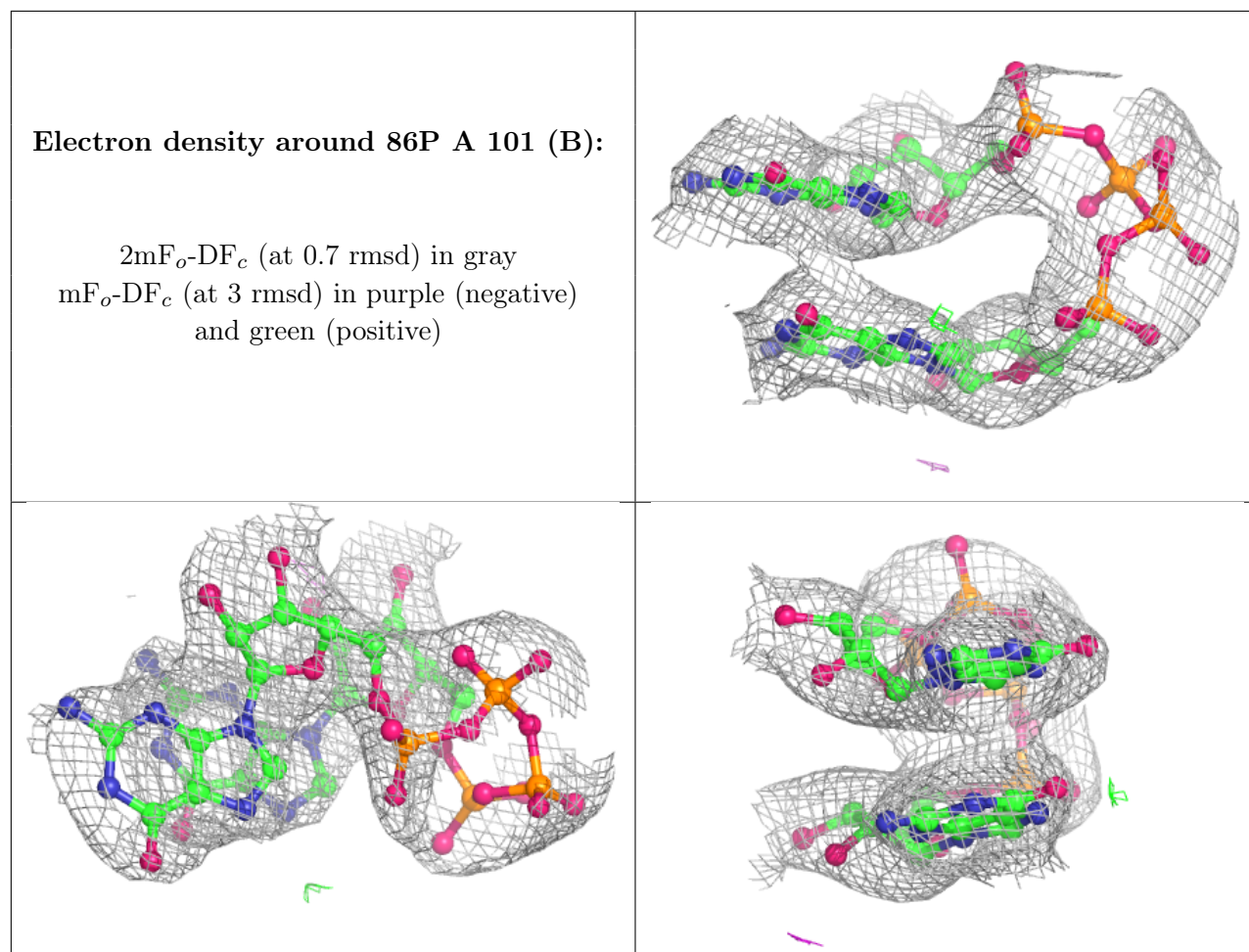
**Electron density around 86P C 101 (B):**

$2mF_o-DF_c$  (at 0.7 rmsd) in gray  
 $mF_o-DF_c$  (at 3 rmsd) in purple (negative)  
and green (positive)

**Electron density around 86P A 101 (A):**

$2mF_o-DF_c$  (at 0.7 rmsd) in gray  
 $mF_o-DF_c$  (at 3 rmsd) in purple (negative)  
and green (positive)





## 6.5 Other polymers [i](#)

There are no such residues in this entry.