



# Full wwPDB X-ray Structure Validation Report ⓘ

Mar 8, 2018 – 05:16 pm GMT

PDB ID : 3UFR  
Title : Structure of rat nitric oxide synthase heme domain in complex with 6-(((3R,4R)-4-(((E)-5-(3-fluorophenyl)pent-4-en-1-yl)oxy)pyrrolidin-3-yl)methyl)-4-methylpyridin-2-amine  
Authors : Li, H.; Poulos, T.L.  
Deposited on : 2011-11-01  
Resolution : 2.10 Å(reported)

This is a Full wwPDB X-ray Structure Validation Report for a publicly released PDB entry.

We welcome your comments at [validation@mail.wwpdb.org](mailto:validation@mail.wwpdb.org)

A user guide is available at

<https://www.wwpdb.org/validation/2017/XrayValidationReportHelp>

with specific help available everywhere you see the ⓘ symbol.

---

The following versions of software and data (see [references ⓘ](#)) were used in the production of this report:

MolProbity : 4.02b-467  
Mogul : 1.7.3 (157068), CSD as539be (2018)  
Xtriage (Phenix) : 1.13  
EDS : trunk30967  
Percentile statistics : 20171227.v01 (using entries in the PDB archive December 27th 2017)  
Refmac : 5.8.0158  
CCP4 : 7.0 (Gargrove)  
Ideal geometry (proteins) : Engh & Huber (2001)  
Ideal geometry (DNA, RNA) : Parkinson et al. (1996)  
Validation Pipeline (wwPDB-VP) : trunk30967

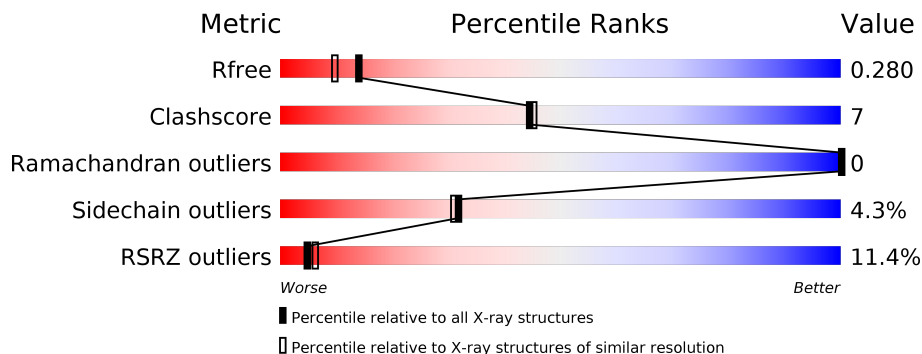
# 1 Overall quality at a glance

The following experimental techniques were used to determine the structure:

*X-RAY DIFFRACTION*

The reported resolution of this entry is 2.10 Å.

Percentile scores (ranging between 0-100) for global validation metrics of the entry are shown in the following graphic. The table shows the number of entries on which the scores are based.



Metric	Whole archive (#Entries)	Similar resolution (#Entries, resolution range(Å))
$R_{free}$	111664	4608 (2.10-2.10)
Clashscore	122126	5109 (2.10-2.10)
Ramachandran outliers	120053	5059 (2.10-2.10)
Sidechain outliers	120020	5060 (2.10-2.10)
RSRZ outliers	108989	4497 (2.10-2.10)

The table below summarises the geometric issues observed across the polymeric chains and their fit to the electron density. The red, orange, yellow and green segments on the lower bar indicate the fraction of residues that contain outliers for  $\geq 3$ , 2, 1 and 0 types of geometric quality criteria. A grey segment represents the fraction of residues that are not modelled. The numeric value for each fraction is indicated below the corresponding segment, with a dot representing fractions  $\leq 5\%$ . The upper red bar (where present) indicates the fraction of residues that have poor fit to the electron density. The numeric value is given above the bar.

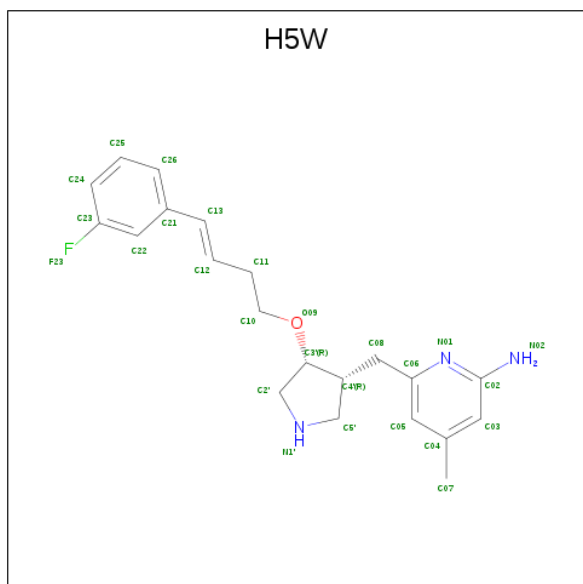
Mol	Chain	Length	Quality of chain
1	A	422	 14% 80% 15% ..
1	B	422	 8% 81% 15% ..





Mol	Chain	Residues	Atoms				ZeroOcc	AltConf
			Total	C	N	O		
3	A	1	17	9	5	3	0	0
3	B	1	17	9	5	3	0	0

- Molecule 4 is 6-[[[(3R,4R)-4-[[[(3E)-4-(3-fluorophenyl)but-3-en-1-yl]oxy]pyrrolidin-3-yl]methyl]-4-methylpyridin-2-amine (three-letter code: H5W) (formula: C<sub>21</sub>H<sub>26</sub>FN<sub>3</sub>O).



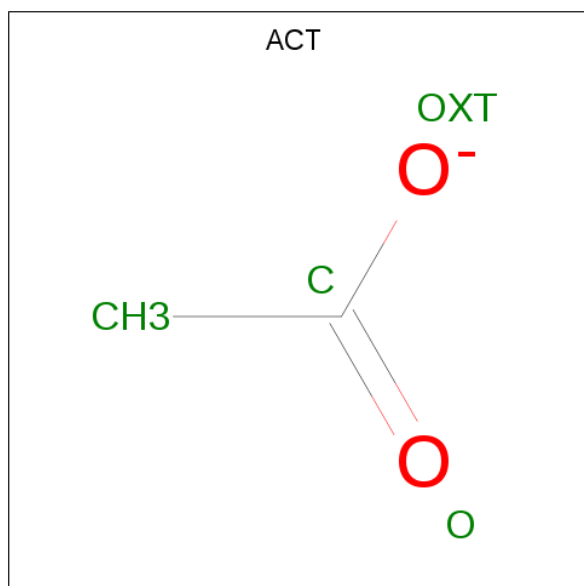
Mol	Chain	Residues	Atoms					ZeroOcc	AltConf
			Total	C	F	N	O		
4	A	1	26	21	1	3	1	0	0

*Continued on next page...*

Continued from previous page...

Mol	Chain	Residues	Atoms					ZeroOcc	AltConf
			Total	C	F	N	O		
4	B	1	52	42	2	6	2	0	1

- Molecule 5 is ACETATE ION (three-letter code: ACT) (formula: C<sub>2</sub>H<sub>3</sub>O<sub>2</sub>).



Mol	Chain	Residues	Atoms			ZeroOcc	AltConf
			Total	C	O		
5	A	1	4	2	2	0	0
5	B	1	4	2	2	0	0

- Molecule 6 is ZINC ION (three-letter code: ZN) (formula: Zn).

Mol	Chain	Residues	Atoms		ZeroOcc	AltConf
			Total	Zn		
6	A	1	1	1	0	0

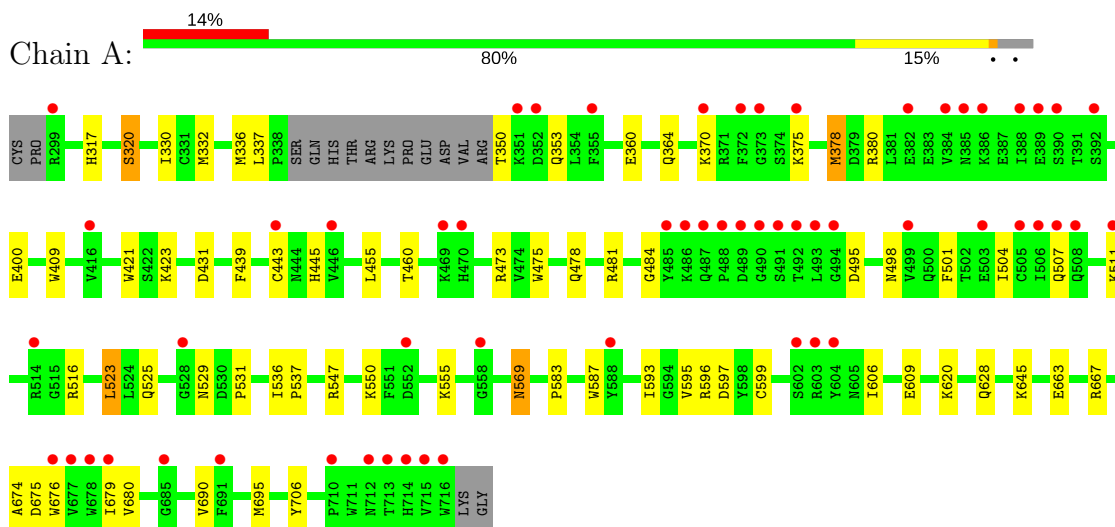
- Molecule 7 is water.

Mol	Chain	Residues	Atoms		ZeroOcc	AltConf
			Total	O		
7	A	84	84	84	0	0
7	B	136	136	136	0	0

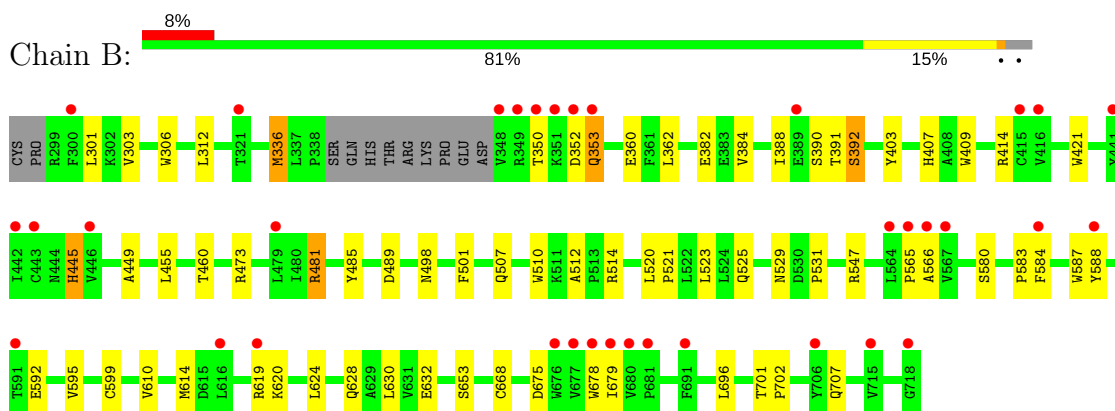
### 3 Residue-property plots

These plots are drawn for all protein, RNA and DNA chains in the entry. The first graphic for a chain summarises the proportions of the various outlier classes displayed in the second graphic. The second graphic shows the sequence view annotated by issues in geometry and electron density. Residues are color-coded according to the number of geometric quality criteria for which they contain at least one outlier: green = 0, yellow = 1, orange = 2 and red = 3 or more. A red dot above a residue indicates a poor fit to the electron density ( $RSRZ > 2$ ). Stretches of 2 or more consecutive residues without any outlier are shown as a green connector. Residues present in the sample, but not in the model, are shown in grey.

- Molecule 1: Nitric oxide synthase, brain



- Molecule 1: Nitric oxide synthase, brain



## 4 Data and refinement statistics

Property	Value	Source
Space group	P 21 21 21	Depositor
Cell constants a, b, c, $\alpha$ , $\beta$ , $\gamma$	51.87Å 111.34Å 164.52Å 90.00° 90.00° 90.00°	Depositor
Resolution (Å)	46.10 – 2.10 46.10 – 2.10	Depositor EDS
% Data completeness (in resolution range)	96.8 (46.10-2.10) 96.7 (46.10-2.10)	Depositor EDS
$R_{merge}$	0.07	Depositor
$R_{sym}$	0.07	Depositor
$\langle I/\sigma(I) \rangle$ <sup>1</sup>	2.31 (at 2.10Å)	Xtrriage
Refinement program	REFMAC	Depositor
R, $R_{free}$	0.199 , 0.249 0.234 , 0.280	Depositor DCC
$R_{free}$ test set	2704 reflections (4.92%)	wwPDB-VP
Wilson B-factor (Å <sup>2</sup> )	39.9	Xtrriage
Anisotropy	0.417	Xtrriage
Bulk solvent $k_{sol}$ (e/Å <sup>3</sup> ), $B_{sol}$ (Å <sup>2</sup> )	0.35 , 48.8	EDS
L-test for twinning <sup>2</sup>	$\langle  L  \rangle = 0.49$ , $\langle L^2 \rangle = 0.32$	Xtrriage
Estimated twinning fraction	No twinning to report.	Xtrriage
$F_o, F_c$ correlation	0.95	EDS
Total number of atoms	7097	wwPDB-VP
Average B, all atoms (Å <sup>2</sup> )	54.0	wwPDB-VP

Xtrriage's analysis on translational NCS is as follows: *The largest off-origin peak in the Patterson function is 5.62% of the height of the origin peak. No significant pseudotranslation is detected.*

<sup>1</sup>Intensities estimated from amplitudes.

<sup>2</sup>Theoretical values of  $\langle |L| \rangle$ ,  $\langle L^2 \rangle$  for acentric reflections are 0.5, 0.333 respectively for untwinned datasets, and 0.375, 0.2 for perfectly twinned datasets.

## 5 Model quality [i](#)

### 5.1 Standard geometry [i](#)

Bond lengths and bond angles in the following residue types are not validated in this section: HEM, ZN, H5W, H4B, ACT

The Z score for a bond length (or angle) is the number of standard deviations the observed value is removed from the expected value. A bond length (or angle) with  $|Z| > 5$  is considered an outlier worth inspection. RMSZ is the root-mean-square of all Z scores of the bond lengths (or angles).

Mol	Chain	Bond lengths		Bond angles	
		RMSZ	# Z  >5	RMSZ	# Z  >5
1	A	0.72	0/3406	0.73	0/4621
1	B	0.83	0/3457	0.80	1/4687 (0.0%)
All	All	0.78	0/6863	0.77	1/9308 (0.0%)

There are no bond length outliers.

All (1) bond angle outliers are listed below:

Mol	Chain	Res	Type	Atoms	Z	Observed(°)	Ideal(°)
1	B	489	ASP	CB-CG-OD2	6.45	124.10	118.30

There are no chirality outliers.

There are no planarity outliers.

### 5.2 Too-close contacts [i](#)

In the following table, the Non-H and H(model) columns list the number of non-hydrogen atoms and hydrogen atoms in the chain respectively. The H(added) column lists the number of hydrogen atoms added and optimized by MolProbity. The Clashes column lists the number of clashes within the asymmetric unit, whereas Symm-Clashes lists symmetry related clashes.

Mol	Chain	Non-H	H(model)	H(added)	Clashes	Symm-Clashes
1	A	3313	0	3221	43	0
1	B	3357	0	3273	49	0
2	A	43	0	30	3	0
2	B	43	0	30	7	0
3	A	17	0	15	1	0
3	B	17	0	15	2	0
4	A	26	0	26	3	0
4	B	52	0	52	5	0

*Continued on next page...*



*Continued from previous page...*

Mol	Chain	Non-H	H(model)	H(added)	Clashes	Symm-Clashes
5	A	4	0	3	0	0
5	B	4	0	3	0	0
6	A	1	0	0	0	0
7	A	84	0	0	3	0
7	B	136	0	0	0	0
All	All	7097	0	6668	96	0

The all-atom clashscore is defined as the number of clashes found per 1000 atoms (including hydrogen atoms). The all-atom clashscore for this structure is 7.

All (96) close contacts within the same asymmetric unit are listed below, sorted by their clash magnitude.

Atom-1	Atom-2	Interatomic distance (Å)	Clash overlap (Å)
1:B:592:GLU:OE1	4:B:800[B]:H5W:H3	1.57	1.04
1:B:481:ARG:HD3	1:B:498:ASN:HD21	1.26	0.99
2:A:750:HEM:HMC2	2:A:750:HEM:HBC2	1.55	0.89
1:A:523:LEU:HD22	1:A:531:PRO:HB2	1.58	0.85
1:B:353:GLN:H	1:B:353:GLN:HE21	1.30	0.76
1:B:481:ARG:HD3	1:B:498:ASN:ND2	2.02	0.71
1:A:317:HIS:O	1:A:320:SER:HB3	1.89	0.70
1:B:584:PHE:CD1	2:B:750:HEM:HAC	2.32	0.64
2:B:750:HEM:C1C	4:B:800[A]:H5W:H27	2.33	0.63
1:B:350:THR:HB	1:B:353:GLN:HE22	1.63	0.63
1:B:587:TRP:H	2:B:750:HEM:HAB	1.64	0.63
1:A:596:ARG:HH22	3:A:760:H4B:C4	2.11	0.62
1:A:525:GLN:HG3	1:A:529:ASN:O	2.00	0.62
1:B:336:MET:HG2	4:B:800[B]:H5W:H27	1.83	0.60
1:A:380:ARG:HD3	1:A:400:GLU:OE1	2.02	0.59
1:A:706:TYR:CE2	4:A:800:H5W:H3	2.38	0.58
1:A:478:GLN:HB2	1:A:481:ARG:HG3	1.86	0.57
1:B:350:THR:HB	1:B:353:GLN:NE2	2.20	0.56
1:B:481:ARG:NH1	1:B:498:ASN:OD1	2.37	0.56
1:B:595:VAL:O	1:B:599:CYS:HB2	2.06	0.56
1:A:596:ARG:NH1	1:A:596:ARG:HG3	2.21	0.56
1:B:350:THR:HG22	1:B:352:ASP:H	1.71	0.56
1:A:507:GLN:O	1:A:507:GLN:HG2	2.07	0.55
1:B:460:THR:O	1:B:583:PRO:HD2	2.05	0.55
1:B:584:PHE:CD1	2:B:750:HEM:CAC	2.89	0.55
1:A:330:ILE:HD11	1:B:696:LEU:HB3	1.88	0.55
2:A:750:HEM:CMC	2:A:750:HEM:HBC2	2.34	0.54
1:B:353:GLN:N	1:B:353:GLN:HE21	2.02	0.54

*Continued on next page...*

*Continued from previous page...*

Atom-1	Atom-2	Interatomic distance (Å)	Clash overlap (Å)
1:A:569:ASN:H	1:A:569:ASN:HD22	1.55	0.54
1:A:674:ALA:HB3	1:A:695:MET:HB3	1.91	0.52
1:A:475:TRP:CZ2	1:A:531:PRO:HG3	2.46	0.51
1:A:336:MET:HG3	1:B:306:TRP:CE2	2.45	0.51
1:A:460:THR:O	1:A:583:PRO:HD2	2.12	0.50
2:A:750:HEM:C1C	4:A:800:H5W:H27	2.46	0.50
2:B:750:HEM:O2D	4:B:800[B]:H5W:N01	2.45	0.49
1:A:501:PHE:HA	1:A:504:ILE:HD12	1.95	0.49
1:A:595:VAL:O	1:A:599:CYS:HB2	2.13	0.49
4:A:800:H5W:H12	4:A:800:H5W:H7	1.95	0.48
1:B:565:PRO:HB3	1:B:588:TYR:CZ	2.48	0.48
1:B:473:ARG:HD2	1:B:580:SER:O	2.13	0.48
1:B:388:ILE:O	1:B:392:SER:HA	2.14	0.47
1:B:675:ASP:O	1:B:679:ILE:HG12	2.15	0.47
1:B:445:HIS:C	1:B:445:HIS:CD2	2.88	0.47
1:B:523:LEU:CD1	1:B:531:PRO:HB2	2.45	0.47
1:A:628:GLN:NE2	1:B:632:GLU:OE2	2.47	0.46
1:A:596:ARG:HH11	1:A:596:ARG:HG3	1.80	0.46
1:A:378:MET:HA	1:A:378:MET:CE	2.45	0.46
1:B:391:THR:O	1:B:392:SER:HB2	2.14	0.46
1:B:353:GLN:H	1:B:353:GLN:NE2	2.08	0.46
1:B:409:TRP:CE3	1:B:421:TRP:HA	2.51	0.46
1:A:596:ARG:NH2	7:A:87:HOH:O	2.48	0.45
1:B:619:ARG:HB2	1:B:619:ARG:CZ	2.46	0.45
2:B:750:HEM:O1A	3:B:760:H4B:N2	2.41	0.45
1:A:439:PHE:CZ	1:A:443:CYS:SG	3.10	0.45
1:B:485:TYR:CE1	1:B:514:ARG:HA	2.51	0.45
1:A:593:ILE:HA	1:A:597:ASP:HB2	1.99	0.44
1:B:303:VAL:HG22	1:B:312:LEU:HB2	1.98	0.44
1:A:439:PHE:CE2	1:A:443:CYS:SG	3.11	0.44
1:B:455:LEU:CD1	1:B:455:LEU:N	2.80	0.44
1:A:445:HIS:C	1:A:445:HIS:CD2	2.90	0.44
1:B:403:TYR:CE1	1:B:407:HIS:CE1	3.06	0.44
1:A:667:ARG:HD3	7:A:136:HOH:O	2.17	0.44
1:B:624:LEU:O	1:B:628:GLN:HG3	2.18	0.44
1:A:536:ILE:O	1:A:537:PRO:C	2.55	0.43
1:B:388:ILE:O	1:B:392:SER:N	2.51	0.43
1:B:336:MET:HE1	3:B:760:H4B:H9	2.00	0.43
1:B:362:LEU:HD11	1:B:384:VAL:HG21	2.00	0.43
1:B:414:ARG:HD3	1:B:678:TRP:CD2	2.53	0.43
1:B:595:VAL:HG22	1:B:630:LEU:HD11	2.00	0.43

*Continued on next page...*

Continued from previous page...

Atom-1	Atom-2	Interatomic distance (Å)	Clash overlap (Å)
1:A:455:LEU:HD12	1:A:587:TRP:HB3	2.01	0.43
1:B:501:PHE:HD2	1:B:520:LEU:HD13	1.84	0.43
1:B:610:VAL:O	1:B:614:MET:HG3	2.19	0.42
1:A:676:TRP:CE2	1:A:680:VAL:HG21	2.54	0.42
1:B:336:MET:HB2	1:B:336:MET:HE2	1.69	0.42
1:B:525:GLN:HG3	1:B:529:ASN:O	2.19	0.42
1:B:566:ALA:HA	1:B:584:PHE:O	2.19	0.42
1:A:455:LEU:HD12	1:A:587:TRP:CB	2.49	0.42
1:A:550:LYS:HB2	1:A:550:LYS:HE3	1.96	0.42
1:B:701:THR:HA	1:B:702:PRO:C	2.40	0.42
1:A:431:ASP:C	1:A:431:ASP:OD2	2.56	0.42
1:A:409:TRP:CE3	1:A:421:TRP:HA	2.55	0.41
1:A:484:GLY:HA3	1:A:495:ASP:O	2.20	0.41
1:A:569:ASN:N	1:A:569:ASN:HD22	2.17	0.41
1:A:473:ARG:NH2	7:A:72:HOH:O	2.54	0.41
1:A:606:ILE:HA	1:A:609:GLU:OE1	2.20	0.41
1:A:475:TRP:HB2	1:A:523:LEU:HB3	2.03	0.41
1:B:391:THR:O	1:B:392:SER:CB	2.68	0.41
1:B:485:TYR:OH	1:B:512:ALA:HB1	2.21	0.41
1:A:675:ASP:O	1:A:679:ILE:HG12	2.21	0.41
1:B:449:ALA:O	1:B:455:LEU:HA	2.21	0.41
1:A:680:VAL:HG22	1:A:690:VAL:HG23	2.03	0.41
1:A:332:MET:CE	1:B:301:LEU:HD13	2.51	0.40
1:A:360:GLU:O	1:A:364:GLN:HG2	2.21	0.40
1:A:481:ARG:HD3	1:A:498:ASN:HD21	1.86	0.40
1:B:510:TRP:CE2	1:B:521:PRO:HD3	2.57	0.40
2:B:750:HEM:C2C	4:B:800[A]:H5W:H27	2.56	0.40

There are no symmetry-related clashes.

## 5.3 Torsion angles [i](#)

### 5.3.1 Protein backbone [i](#)

In the following table, the Percentiles column shows the percent Ramachandran outliers of the chain as a percentile score with respect to all X-ray entries followed by that with respect to entries of similar resolution.

The Analysed column shows the number of residues for which the backbone conformation was analysed, and the total number of residues.

Mol	Chain	Analysed	Favoured	Allowed	Outliers	Percentiles	
1	A	403/422 (96%)	386 (96%)	17 (4%)	0	100	100
1	B	409/422 (97%)	391 (96%)	18 (4%)	0	100	100
All	All	812/844 (96%)	777 (96%)	35 (4%)	0	100	100

There are no Ramachandran outliers to report.

### 5.3.2 Protein sidechains [i](#)

In the following table, the Percentiles column shows the percent sidechain outliers of the chain as a percentile score with respect to all X-ray entries followed by that with respect to entries of similar resolution.

The Analysed column shows the number of residues for which the sidechain conformation was analysed, and the total number of residues.

Mol	Chain	Analysed	Rotameric	Outliers	Percentiles	
1	A	363/377 (96%)	346 (95%)	17 (5%)	29	27
1	B	368/377 (98%)	353 (96%)	15 (4%)	33	33
All	All	731/754 (97%)	699 (96%)	32 (4%)	32	30

All (32) residues with a non-rotameric sidechain are listed below:

Mol	Chain	Res	Type
1	A	320	SER
1	A	337	LEU
1	A	350	THR
1	A	353	GLN
1	A	370	LYS
1	A	375	LYS
1	A	378	MET
1	A	423	LYS
1	A	511	LYS
1	A	516	ARG
1	A	523	LEU
1	A	547	ARG
1	A	555	LYS
1	A	569	ASN
1	A	620	LYS
1	A	645	LYS
1	A	663	GLU
1	B	336	MET

*Continued on next page...*

*Continued from previous page...*

Mol	Chain	Res	Type
1	B	353	GLN
1	B	360	GLU
1	B	382	GLU
1	B	390	SER
1	B	392	SER
1	B	445	HIS
1	B	481	ARG
1	B	507	GLN
1	B	547	ARG
1	B	620	LYS
1	B	653	SER
1	B	668[A]	CYS
1	B	668[B]	CYS
1	B	707	GLN

Some sidechains can be flipped to improve hydrogen bonding and reduce clashes. All (13) such sidechains are listed below:

Mol	Chain	Res	Type
1	A	353	GLN
1	A	454	ASN
1	A	569	ASN
1	A	697	ASN
1	B	353	GLN
1	B	385	ASN
1	B	425	GLN
1	B	454	ASN
1	B	535	GLN
1	B	601	ASN
1	B	605	ASN
1	B	642	GLN
1	B	697	ASN

### 5.3.3 RNA [i](#)

There are no RNA molecules in this entry.

### 5.4 Non-standard residues in protein, DNA, RNA chains [i](#)

There are no non-standard protein/DNA/RNA residues in this entry.

## 5.5 Carbohydrates [i](#)

There are no carbohydrates in this entry.

## 5.6 Ligand geometry [i](#)

Of 10 ligands modelled in this entry, 1 is monoatomic - leaving 9 for Mogul analysis.

In the following table, the Counts columns list the number of bonds (or angles) for which Mogul statistics could be retrieved, the number of bonds (or angles) that are observed in the model and the number of bonds (or angles) that are defined in the Chemical Component Dictionary. The Link column lists molecule types, if any, to which the group is linked. The Z score for a bond length (or angle) is the number of standard deviations the observed value is removed from the expected value. A bond length (or angle) with  $|Z| > 2$  is considered an outlier worth inspection. RMSZ is the root-mean-square of all Z scores of the bond lengths (or angles).

Mol	Type	Chain	Res	Link	Bond lengths			Bond angles		
					Counts	RMSZ	# Z  > 2	Counts	RMSZ	# Z  > 2
2	HEM	A	750	1	27,50,50	2.13	8 (29%)	17,82,82	2.54	8 (47%)
3	H4B	A	760	-	15,18,18	0.81	0	11,26,26	2.27	4 (36%)
4	H5W	A	800	-	25,28,28	1.02	3 (12%)	31,37,37	1.77	7 (22%)
5	ACT	A	860	-	1,3,3	2.32	1 (100%)	0,3,3	0.00	-
2	HEM	B	750	1	27,50,50	2.24	8 (29%)	17,82,82	1.89	5 (29%)
3	H4B	B	760	-	15,18,18	1.00	0	11,26,26	2.57	4 (36%)
4	H5W	B	800[A]	-	25,28,28	0.93	0	31,37,37	2.08	8 (25%)
4	H5W	B	800[B]	-	25,28,28	0.66	0	31,37,37	1.93	6 (19%)
5	ACT	B	860	-	1,3,3	1.70	0	0,3,3	0.00	-

In the following table, the Chirals column lists the number of chiral outliers, the number of chiral centers analysed, the number of these observed in the model and the number defined in the Chemical Component Dictionary. Similar counts are reported in the Torsion and Rings columns. '-' means no outliers of that kind were identified.

Mol	Type	Chain	Res	Link	Chirals	Torsions	Rings
2	HEM	A	750	1	-	0/6/54/54	0/0/8/8
3	H4B	A	760	-	-	0/8/17/17	0/2/2/2
4	H5W	A	800	-	-	0/12/22/22	0/3/3/3
5	ACT	A	860	-	-	0/0/0/0	0/0/0/0
2	HEM	B	750	1	-	0/6/54/54	0/0/8/8
3	H4B	B	760	-	-	0/8/17/17	0/2/2/2
4	H5W	B	800[A]	-	-	0/12/22/22	0/3/3/3
4	H5W	B	800[B]	-	-	0/12/22/22	0/3/3/3
5	ACT	B	860	-	-	0/0/0/0	0/0/0/0

All (20) bond length outliers are listed below:

Mol	Chain	Res	Type	Atoms	Z	Observed(Å)	Ideal(Å)
2	B	750	HEM	C3C-C2C	-5.58	1.32	1.40
2	A	750	HEM	C3B-C2B	-4.83	1.33	1.40
2	B	750	HEM	C3B-C2B	-4.59	1.34	1.40
2	A	750	HEM	C3C-C2C	-3.72	1.35	1.40
2	B	750	HEM	C4A-NA	2.03	1.40	1.36
4	A	800	H5W	C22-C23	2.15	1.41	1.37
2	A	750	HEM	C1D-ND	2.19	1.40	1.36
4	A	800	H5W	C24-C23	2.22	1.41	1.37
4	A	800	H5W	C11-C10	2.28	1.55	1.51
5	A	860	ACT	CH3-C	2.32	1.51	1.48
2	B	750	HEM	CMD-C2D	2.37	1.56	1.51
2	A	750	HEM	CMC-C2C	2.37	1.57	1.51
2	A	750	HEM	CMD-C2D	2.38	1.56	1.51
2	B	750	HEM	CMA-C3A	2.79	1.57	1.51
2	B	750	HEM	C3B-CAB	2.88	1.53	1.47
2	A	750	HEM	C3C-CAC	2.97	1.53	1.47
2	B	750	HEM	C3C-CAC	3.56	1.54	1.47
2	A	750	HEM	C3B-CAB	3.64	1.55	1.47
2	B	750	HEM	C3D-C2D	4.51	1.51	1.37
2	A	750	HEM	C3D-C2D	4.83	1.52	1.37

All (42) bond angle outliers are listed below:

Mol	Chain	Res	Type	Atoms	Z	Observed(°)	Ideal(°)
2	A	750	HEM	CBA-CAA-C2A	-5.03	102.86	112.48
4	B	800[A]	H5W	C05-C06-N01	-4.55	118.12	122.91
2	A	750	HEM	CBD-CAD-C3D	-4.25	104.37	112.47
4	B	800[B]	H5W	C05-C06-N01	-4.08	118.61	122.91
4	A	800	H5W	C05-C06-N01	-3.70	119.00	122.91
2	B	750	HEM	CBD-CAD-C3D	-3.57	105.65	112.47
2	A	750	HEM	CAD-CBD-CGD	-3.42	106.81	112.66
4	B	800[B]	H5W	C11-C12-C13	-3.33	118.95	125.49
4	B	800[A]	H5W	C11-C12-C13	-3.07	119.45	125.49
2	A	750	HEM	C1D-C2D-C3D	-2.93	104.96	107.00
3	B	760	H4B	N3-C2-N1	-2.90	120.82	125.43
2	B	750	HEM	C1D-C2D-C3D	-2.87	105.00	107.00
4	A	800	H5W	C11-C12-C13	-2.71	120.17	125.49
2	A	750	HEM	CAA-CBA-CGA	-2.68	108.08	112.66
2	B	750	HEM	CAA-CBA-CGA	-2.44	108.50	112.66
3	A	760	H4B	N3-C2-N1	-2.37	121.67	125.43
2	B	750	HEM	C3C-C4C-NC	-2.33	106.55	110.94
2	A	750	HEM	CMA-C3A-C4A	-2.31	124.91	128.46

*Continued on next page...*

Continued from previous page...

Mol	Chain	Res	Type	Atoms	Z	Observed(°)	Ideal(°)
4	A	800	H5W	C24-C23-C22	-2.20	120.40	123.29
4	B	800[A]	H5W	C24-C23-C22	-2.10	120.52	123.29
3	B	760	H4B	C2-N1-C8A	2.02	119.04	114.50
3	A	760	H4B	C2-N1-C8A	2.24	119.53	114.50
4	A	800	H5W	O09-C10-C11	2.33	111.82	107.47
4	B	800[B]	H5W	N02-C02-N01	2.39	120.46	116.56
2	A	750	HEM	CMD-C2D-C1D	2.47	132.26	128.46
4	B	800[B]	H5W	C5'-C4'-C3'	2.73	106.88	103.40
4	B	800[A]	H5W	C2'-N1'-C5'	2.93	112.17	105.33
4	A	800	H5W	C2'-N1'-C5'	2.93	112.18	105.33
4	A	800	H5W	C02-N01-C06	3.26	120.46	118.17
4	B	800[B]	H5W	C2'-N1'-C5'	3.57	113.66	105.33
3	A	760	H4B	C4-N3-C2	3.62	121.26	116.06
4	B	800[A]	H5W	N02-C02-N01	3.77	122.73	116.56
2	B	750	HEM	C4C-C3C-C2C	3.88	109.61	106.90
2	A	750	HEM	C4C-C3C-C2C	3.99	109.68	106.90
4	B	800[A]	H5W	O09-C10-C11	4.03	115.00	107.47
4	B	800[A]	H5W	C08-C06-N01	4.06	123.52	117.12
3	B	760	H4B	C4-N3-C2	4.41	122.41	116.06
4	A	800	H5W	C08-C06-N01	4.50	124.22	117.12
3	A	760	H4B	C4-C4A-C8A	4.74	118.85	114.56
4	B	800[A]	H5W	C02-N01-C06	4.97	121.66	118.17
3	B	760	H4B	C4-C4A-C8A	5.13	119.20	114.56
4	B	800[B]	H5W	C02-N01-C06	6.36	122.64	118.17

There are no chirality outliers.

There are no torsion outliers.

There are no ring outliers.

7 monomers are involved in 16 short contacts:

Mol	Chain	Res	Type	Clashes	Symm-Clashes
2	A	750	HEM	3	0
3	A	760	H4B	1	0
4	A	800	H5W	3	0
2	B	750	HEM	7	0
3	B	760	H4B	2	0
4	B	800[A]	H5W	2	0
4	B	800[B]	H5W	3	0



## 5.7 Other polymers [i](#)

There are no such residues in this entry.

## 5.8 Polymer linkage issues [i](#)

There are no chain breaks in this entry.

## 6 Fit of model and data [i](#)

### 6.1 Protein, DNA and RNA chains [i](#)

In the following table, the column labelled ‘#RSRZ > 2’ contains the number (and percentage) of RSRZ outliers, followed by percent RSRZ outliers for the chain as percentile scores relative to all X-ray entries and entries of similar resolution. The OWAB column contains the minimum, median, 95<sup>th</sup> percentile and maximum values of the occupancy-weighted average B-factor per residue. The column labelled ‘Q < 0.9’ lists the number of (and percentage) of residues with an average occupancy less than 0.9.

Mol	Chain	Analysed	<RSRZ>	#RSRZ>2	OWAB(Å <sup>2</sup> )	Q<0.9
1	A	407/422 (96%)	0.84	58 (14%) <b>2</b> <b>3</b>	28, 57, 98, 131	0
1	B	411/422 (97%)	0.52	35 (8%) <b>11</b> <b>14</b>	29, 46, 69, 95	0
All	All	818/844 (96%)	0.68	93 (11%) <b>5</b> <b>6</b>	28, 51, 93, 131	0

All (93) RSRZ outliers are listed below:

Mol	Chain	Res	Type	RSRZ
1	B	350	THR	8.4
1	A	488	PRO	6.7
1	B	300	PHE	6.1
1	A	486	LYS	5.9
1	A	716	TRP	5.6
1	B	718	GLY	5.5
1	A	373	GLY	4.9
1	B	348	VAL	4.6
1	A	505	CYS	4.4
1	A	355	PHE	4.3
1	B	706[A]	TYR	4.0
1	A	715	VAL	4.0
1	A	713	THR	3.7
1	A	388	ILE	3.7
1	B	352	ASP	3.7
1	A	493	LEU	3.7
1	B	677	VAL	3.6
1	A	351	LYS	3.5
1	A	385	ASN	3.4
1	A	677	VAL	3.4
1	A	714	HIS	3.3
1	B	567	VAL	3.3
1	B	619	ARG	3.3
1	A	491	SER	3.2

*Continued on next page...*

*Continued from previous page...*

<b>Mol</b>	<b>Chain</b>	<b>Res</b>	<b>Type</b>	<b>RSRZ</b>
1	A	375	LYS	3.2
1	A	507	GLN	3.2
1	A	389	GLU	3.1
1	A	506	ILE	2.9
1	B	565	PRO	2.9
1	A	503	GLU	2.9
1	B	566	ALA	2.9
1	A	676	TRP	2.9
1	A	679	ILE	2.8
1	A	386	LYS	2.8
1	A	712	ASN	2.8
1	A	352	ASP	2.7
1	A	602	SER	2.7
1	A	390	SER	2.7
1	B	584	PHE	2.7
1	B	691	PHE	2.7
1	B	591	THR	2.7
1	B	679	ILE	2.6
1	A	485	TYR	2.6
1	A	678	TRP	2.6
1	B	564	LEU	2.6
1	A	487	GLN	2.6
1	A	490	GLY	2.6
1	B	676	TRP	2.6
1	B	616	LEU	2.6
1	A	604	TYR	2.5
1	B	321	THR	2.5
1	B	349	ARG	2.5
1	B	446	VAL	2.5
1	B	351	LYS	2.5
1	B	443	CYS	2.5
1	A	494	GLY	2.5
1	A	691	PHE	2.5
1	B	416	VAL	2.4
1	A	528	GLY	2.4
1	A	446	VAL	2.4
1	A	685	GLY	2.4
1	B	588	TYR	2.4
1	B	353	GLN	2.4
1	A	299	ARG	2.4
1	A	514	ARG	2.4
1	A	370	LYS	2.4

*Continued on next page...*

*Continued from previous page...*

Mol	Chain	Res	Type	RSRZ
1	A	558	GLY	2.4
1	A	489	ASP	2.3
1	B	681	PRO	2.3
1	A	443	CYS	2.3
1	B	389	GLU	2.3
1	A	384	VAL	2.2
1	B	715	VAL	2.2
1	A	392	SER	2.2
1	A	372	PHE	2.2
1	A	499	VAL	2.2
1	A	508	GLN	2.2
1	A	603	ARG	2.2
1	A	492	THR	2.2
1	B	442	ILE	2.2
1	A	416	VAL	2.2
1	A	382	GLU	2.2
1	A	470	HIS	2.1
1	A	710	PRO	2.1
1	B	479	LEU	2.1
1	B	680	VAL	2.1
1	A	588	TYR	2.1
1	A	511	LYS	2.1
1	B	678	TRP	2.1
1	B	415	CYS	2.1
1	A	552	ASP	2.0
1	A	469	LYS	2.0
1	B	441	TYR	2.0

## 6.2 Non-standard residues in protein, DNA, RNA chains [i](#)

There are no non-standard protein/DNA/RNA residues in this entry.

## 6.3 Carbohydrates [i](#)

There are no carbohydrates in this entry.

## 6.4 Ligands [i](#)

In the following table, the Atoms column lists the number of modelled atoms in the group and the number defined in the chemical component dictionary. The B-factors column lists the minimum,

median, 95<sup>th</sup> percentile and maximum values of B factors of atoms in the group. The column labelled 'Q< 0.9' lists the number of atoms with occupancy less than 0.9.

Mol	Type	Chain	Res	Atoms	RSCC	RSR	B-factors(Å <sup>2</sup> )	Q<0.9
4	H5W	B	800[B]	26/26	0.86	0.38	47,56,64,66	26
4	H5W	B	800[A]	26/26	0.86	0.38	41,66,86,88	26
4	H5W	A	800	26/26	0.88	0.26	39,69,96,97	0
3	H4B	A	760	17/17	0.90	0.21	44,47,55,56	0
3	H4B	B	760	17/17	0.92	0.21	34,40,46,48	0
5	ACT	B	860	4/4	0.96	0.11	49,49,52,52	0
5	ACT	A	860	4/4	0.96	0.19	59,60,60,60	0
2	HEM	A	750	43/43	0.97	0.19	31,37,50,57	0
2	HEM	B	750	43/43	0.98	0.23	25,35,47,58	0
6	ZN	A	900	1/1	1.00	0.13	40,40,40,40	0

## 6.5 Other polymers [i](#)

There are no such residues in this entry.