



Full wwPDB X-ray Structure Validation Report ⓘ

Mar 13, 2018 – 07:54 pm GMT

PDB ID : 5UGU
Title : Crystal structure of M. tuberculosis InhA inhibited by PT506
Authors : Eltschkner, S.; Pschibul, A.; Spagnuolo, L.A.; Yu, W.; Tonge, P.J.; Kisker, C.
Deposited on : 2017-01-10
Resolution : 1.95 Å(reported)

This is a Full wwPDB X-ray Structure Validation Report for a publicly released PDB entry.

We welcome your comments at validation@mail.wwpdb.org

A user guide is available at

<https://www.wwpdb.org/validation/2017/XrayValidationReportHelp>

with specific help available everywhere you see the ⓘ symbol.

The following versions of software and data (see [references ⓘ](#)) were used in the production of this report:

MolProbity : 4.02b-467
Mogul : 1.7.3 (157068), CSD as539be (2018)
Xtriage (Phenix) : 1.13
EDS : trunk31020
Percentile statistics : 20171227.v01 (using entries in the PDB archive December 27th 2017)
Refmac : 5.8.0158
CCP4 : 7.0 (Gargrove)
Ideal geometry (proteins) : Engh & Huber (2001)
Ideal geometry (DNA, RNA) : Parkinson et al. (1996)
Validation Pipeline (wwPDB-VP) : trunk31020

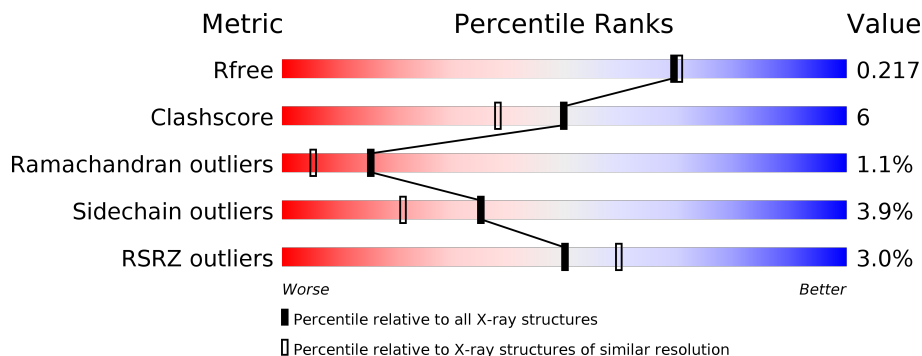
1 Overall quality at a glance

The following experimental techniques were used to determine the structure:

X-RAY DIFFRACTION

The reported resolution of this entry is 1.95 Å.

Percentile scores (ranging between 0-100) for global validation metrics of the entry are shown in the following graphic. The table shows the number of entries on which the scores are based.



Metric	Whole archive (#Entries)	Similar resolution (#Entries, resolution range(Å))
R_{free}	111664	2220 (1.96-1.96)
Clashscore	122126	2333 (1.96-1.96)
Ramachandran outliers	120053	2314 (1.96-1.96)
Sidechain outliers	120020	2314 (1.96-1.96)
RSRZ outliers	108989	2174 (1.96-1.96)

The table below summarises the geometric issues observed across the polymeric chains and their fit to the electron density. The red, orange, yellow and green segments on the lower bar indicate the fraction of residues that contain outliers for ≥ 3 , 2, 1 and 0 types of geometric quality criteria. A grey segment represents the fraction of residues that are not modelled. The numeric value for each fraction is indicated below the corresponding segment, with a dot representing fractions $\leq 5\%$. The upper red bar (where present) indicates the fraction of residues that have poor fit to the electron density. The numeric value is given above the bar.

Mol	Chain	Length	Quality of chain
1	A	289	

2 Entry composition [i](#)

There are 4 unique types of molecules in this entry. The entry contains 2306 atoms, of which 0 are hydrogens and 0 are deuteriums.

In the tables below, the ZeroOcc column contains the number of atoms modelled with zero occupancy, the AltConf column contains the number of residues with at least one atom in alternate conformation and the Trace column contains the number of residues modelled with at most 2 atoms.

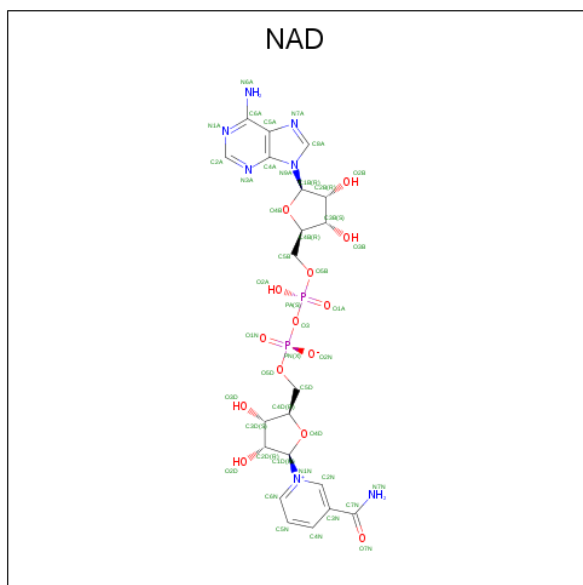
- Molecule 1 is a protein called Enoyl-[acyl-carrier-protein] reductase [NADH].

Mol	Chain	Residues	Atoms					ZeroOcc	AltConf	Trace
			Total	C	N	O	S			
1	A	268	2063	1310	359	383	11	0	12	0

There are 20 discrepancies between the modelled and reference sequences:

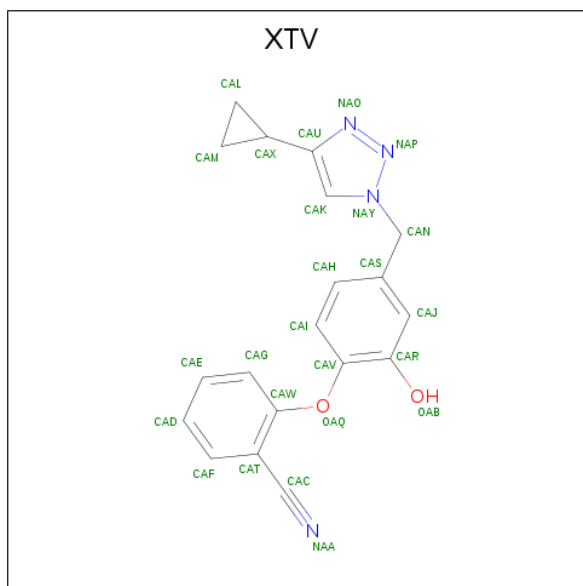
Chain	Residue	Modelled	Actual	Comment	Reference
A	-19	MET	-	initiating methionine	UNP P9WGR1
A	-18	GLY	-	expression tag	UNP P9WGR1
A	-17	SER	-	expression tag	UNP P9WGR1
A	-16	SER	-	expression tag	UNP P9WGR1
A	-15	HIS	-	expression tag	UNP P9WGR1
A	-14	HIS	-	expression tag	UNP P9WGR1
A	-13	HIS	-	expression tag	UNP P9WGR1
A	-12	HIS	-	expression tag	UNP P9WGR1
A	-11	HIS	-	expression tag	UNP P9WGR1
A	-10	HIS	-	expression tag	UNP P9WGR1
A	-9	SER	-	expression tag	UNP P9WGR1
A	-8	SER	-	expression tag	UNP P9WGR1
A	-7	GLY	-	expression tag	UNP P9WGR1
A	-6	LEU	-	expression tag	UNP P9WGR1
A	-5	VAL	-	expression tag	UNP P9WGR1
A	-4	PRO	-	expression tag	UNP P9WGR1
A	-3	ARG	-	expression tag	UNP P9WGR1
A	-2	GLY	-	expression tag	UNP P9WGR1
A	-1	SER	-	expression tag	UNP P9WGR1
A	0	HIS	-	expression tag	UNP P9WGR1

- Molecule 2 is NICOTINAMIDE-ADENINE-DINUCLEOTIDE (three-letter code: NAD) (formula: C₂₁H₂₇N₇O₁₄P₂).



Mol	Chain	Residues	Atoms					ZeroOcc	AltConf
			Total	C	N	O	P		
2	A	1	44	21	7	14	2	0	0

- Molecule 3 is 2-[4-[(4-cyclopropyl-1,2,3-triazol-1-yl)methyl]-2-oxidanyl-phenoxy]benzenecarbonitrile (three-letter code: XTV) (formula: C₁₉H₁₆N₄O₂).



Mol	Chain	Residues	Atoms				ZeroOcc	AltConf
			Total	C	N	O		
3	A	1	25	19	4	2	0	0


- Molecule 4 is water.

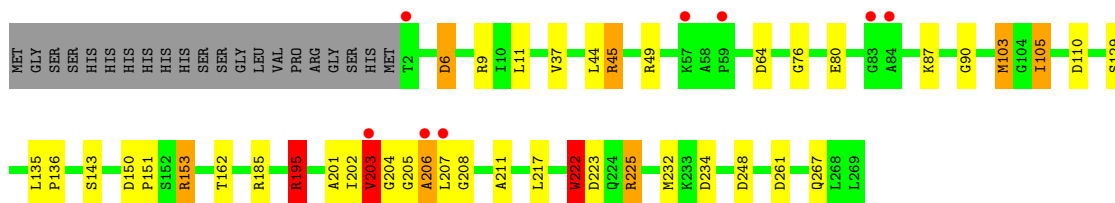
Mol	Chain	Residues	Atoms		ZeroOcc	AltConf
4	A	174	Total 174	O 174	0	0

3 Residue-property plots [i](#)

These plots are drawn for all protein, RNA and DNA chains in the entry. The first graphic for a chain summarises the proportions of the various outlier classes displayed in the second graphic. The second graphic shows the sequence view annotated by issues in geometry and electron density. Residues are color-coded according to the number of geometric quality criteria for which they contain at least one outlier: green = 0, yellow = 1, orange = 2 and red = 3 or more. A red dot above a residue indicates a poor fit to the electron density ($RSRZ > 2$). Stretches of 2 or more consecutive residues without any outlier are shown as a green connector. Residues present in the sample, but not in the model, are shown in grey.

- Molecule 1: Enoyl-[acyl-carrier-protein] reductase [NADH]

Chain A: 



4 Data and refinement statistics

Property	Value	Source
Space group	I 41 2 2	Depositor
Cell constants a, b, c, α , β , γ	90.66Å 90.66Å 182.88Å 90.00° 90.00° 90.00°	Depositor
Resolution (Å)	45.72 – 1.95 45.72 – 1.95	Depositor EDS
% Data completeness (in resolution range)	100.0 (45.72-1.95) 100.0 (45.72-1.95)	Depositor EDS
R_{merge}	0.12	Depositor
R_{sym}	(Not available)	Depositor
$\langle I/\sigma(I) \rangle$ ¹	1.90 (at 1.95Å)	Xtrriage
Refinement program	REFMAC 5.8.0155	Depositor
R, R_{free}	0.164 , 0.212 0.174 , 0.217	Depositor DCC
R_{free} test set	1433 reflections (5.08%)	wwPDB-VP
Wilson B-factor (Å ²)	33.6	Xtrriage
Anisotropy	0.248	Xtrriage
Bulk solvent k_{sol} (e/Å ³), B_{sol} (Å ²)	0.34 , 40.0	EDS
L-test for twinning ²	$\langle L \rangle = 0.48$, $\langle L^2 \rangle = 0.31$	Xtrriage
Estimated twinning fraction	No twinning to report.	Xtrriage
F_o, F_c correlation	0.97	EDS
Total number of atoms	2306	wwPDB-VP
Average B, all atoms (Å ²)	46.0	wwPDB-VP

Xtrriage's analysis on translational NCS is as follows: *The largest off-origin peak in the Patterson function is 4.90% of the height of the origin peak. No significant pseudotranslation is detected.*

¹Intensities estimated from amplitudes.

²Theoretical values of $\langle |L| \rangle$, $\langle L^2 \rangle$ for acentric reflections are 0.5, 0.333 respectively for untwinned datasets, and 0.375, 0.2 for perfectly twinned datasets.

5 Model quality i

5.1 Standard geometry i

Bond lengths and bond angles in the following residue types are not validated in this section: XTV, NAD

The Z score for a bond length (or angle) is the number of standard deviations the observed value is removed from the expected value. A bond length (or angle) with $|Z| > 5$ is considered an outlier worth inspection. RMSZ is the root-mean-square of all Z scores of the bond lengths (or angles).

Mol	Chain	Bond lengths		Bond angles	
		RMSZ	# Z >5	RMSZ	# Z >5
1	A	1.25	2/2116 (0.1%)	1.27	22/2870 (0.8%)

Chiral center outliers are detected by calculating the chiral volume of a chiral center and verifying if the center is modelled as a planar moiety or with the opposite hand. A planarity outlier is detected by checking planarity of atoms in a peptide group, atoms in a mainchain group or atoms of a sidechain that are expected to be planar.

Mol	Chain	#Chirality outliers	#Planarity outliers
1	A	0	2

All (2) bond length outliers are listed below:

Mol	Chain	Res	Type	Atoms	Z	Observed(Å)	Ideal(Å)
1	A	129	SER	CB-OG	-7.99	1.31	1.42
1	A	222	TRP	CB-CG	-5.81	1.39	1.50

All (22) bond angle outliers are listed below:

Mol	Chain	Res	Type	Atoms	Z	Observed(°)	Ideal(°)
1	A	225	ARG	NE-CZ-NH2	9.92	125.26	120.30
1	A	223	ASP	CB-CG-OD1	9.21	126.59	118.30
1	A	195	ARG	NE-CZ-NH2	7.81	124.20	120.30
1	A	103	MET	CA-CB-CG	7.73	126.44	113.30
1	A	103	MET	CB-CG-SD	-7.65	89.45	112.40
1	A	153[A]	ARG	NE-CZ-NH2	7.59	124.10	120.30
1	A	153[B]	ARG	NE-CZ-NH2	7.59	124.10	120.30
1	A	45	ARG	NE-CZ-NH1	-6.80	116.90	120.30
1	A	150	ASP	CB-CG-OD2	-6.77	112.21	118.30
1	A	195	ARG	NE-CZ-NH1	-6.58	117.01	120.30
1	A	225	ARG	NE-CZ-NH1	-6.21	117.19	120.30

Continued on next page...

Continued from previous page...

Mol	Chain	Res	Type	Atoms	Z	Observed(°)	Ideal(°)
1	A	223	ASP	CB-CG-OD2	-6.20	112.72	118.30
1	A	105	ILE	CB-CA-C	-6.00	99.59	111.60
1	A	248	ASP	CB-CG-OD1	5.70	123.43	118.30
1	A	234	ASP	CB-CG-OD1	5.69	123.42	118.30
1	A	185	ARG	NE-CZ-NH2	5.65	123.12	120.30
1	A	185	ARG	NE-CZ-NH1	-5.61	117.50	120.30
1	A	44	LEU	CB-CG-CD1	-5.40	101.81	111.00
1	A	6	ASP	CB-CG-OD2	-5.25	113.58	118.30
1	A	9	ARG	NE-CZ-NH2	5.20	122.90	120.30
1	A	110	ASP	CB-CG-OD1	5.13	122.92	118.30
1	A	64	ASP	CB-CG-OD2	5.09	122.88	118.30

There are no chirality outliers.

All (2) planarity outliers are listed below:

Mol	Chain	Res	Type	Group
1	A	201	ALA	Peptide
1	A	206[A]	ALA	Peptide

5.2 Too-close contacts [i](#)

In the following table, the Non-H and H(model) columns list the number of non-hydrogen atoms and hydrogen atoms in the chain respectively. The H(added) column lists the number of hydrogen atoms added and optimized by MolProbity. The Clashes column lists the number of clashes within the asymmetric unit, whereas Symm-Clashes lists symmetry related clashes.

Mol	Chain	Non-H	H(model)	H(added)	Clashes	Symm-Clashes
1	A	2063	0	2103	27	0
2	A	44	0	26	0	0
3	A	25	0	0	0	0
4	A	174	0	0	5	0
All	All	2306	0	2129	27	0

The all-atom clashscore is defined as the number of clashes found per 1000 atoms (including hydrogen atoms). The all-atom clashscore for this structure is 6.

All (27) close contacts within the same asymmetric unit are listed below, sorted by their clash magnitude.

Atom-1	Atom-2	Interatomic distance (Å)	Clash overlap (Å)
1:A:153[B]:ARG:CZ	4:A:410:HOH:O	2.25	0.85

Continued on next page...

Continued from previous page...

Atom-1	Atom-2	Interatomic distance (Å)	Clash overlap (Å)
1:A:203[A]:VAL:HG23	1:A:205[A]:GLY:N	1.97	0.79
1:A:203[A]:VAL:HG23	1:A:205[A]:GLY:H	1.51	0.75
1:A:203[A]:VAL:HG23	1:A:205[A]:GLY:CA	2.21	0.71
1:A:207[B]:LEU:HD23	1:A:208[B]:GLY:N	2.06	0.70
1:A:103:MET:HE2	1:A:202[A]:ILE:HG23	1.83	0.59
1:A:203[B]:VAL:O	1:A:203[B]:VAL:HG12	2.04	0.57
1:A:105:ILE:HG22	1:A:105:ILE:O	2.07	0.55
1:A:105:ILE:HD13	1:A:211:ALA:HB3	1.88	0.55
1:A:87:LYS:O	4:A:401:HOH:O	2.18	0.54
1:A:206[B]:ALA:O	1:A:207[B]:LEU:C	2.45	0.53
1:A:205[A]:GLY:O	1:A:206[A]:ALA:O	2.27	0.52
1:A:105:ILE:CD1	1:A:211:ALA:HB3	2.43	0.49
1:A:203[A]:VAL:HG23	1:A:205[A]:GLY:HA2	1.94	0.48
1:A:153[B]:ARG:CZ	4:A:497:HOH:O	2.61	0.47
1:A:105:ILE:HD11	1:A:206[B]:ALA:HA	1.98	0.45
1:A:195:ARG:CZ	1:A:232[A]:MET:HE2	2.47	0.45
1:A:207[B]:LEU:HD23	1:A:207[B]:LEU:C	2.37	0.45
1:A:76:GLY:O	1:A:80:GLU:HG3	2.17	0.44
1:A:90:GLY:HA2	1:A:143:SER:O	2.18	0.43
1:A:222:TRP:HE1	1:A:261:ASP:HB2	1.84	0.43
1:A:135:LEU:N	1:A:136:PRO:CD	2.82	0.42
1:A:225:ARG:HD2	1:A:267:GLN:O	2.19	0.42
1:A:153[B]:ARG:NE	4:A:410:HOH:O	2.48	0.42
1:A:105:ILE:O	1:A:105:ILE:CG2	2.68	0.41
1:A:11:LEU:HA	1:A:37:VAL:O	2.20	0.41
1:A:153[B]:ARG:NH1	4:A:410:HOH:O	2.49	0.41

There are no symmetry-related clashes.

5.3 Torsion angles [i](#)

5.3.1 Protein backbone [i](#)

In the following table, the Percentiles column shows the percent Ramachandran outliers of the chain as a percentile score with respect to all X-ray entries followed by that with respect to entries of similar resolution.

The Analysed column shows the number of residues for which the backbone conformation was analysed, and the total number of residues.

Mol	Chain	Analysed	Favoured	Allowed	Outliers	Percentiles
1	A	278/289 (96%)	258 (93%)	15 (5%)	5 (2%)	9 2

All (5) Ramachandran outliers are listed below:

Mol	Chain	Res	Type
1	A	203[A]	VAL
1	A	203[B]	VAL
1	A	204[A]	GLY
1	A	204[B]	GLY
1	A	151	PRO

5.3.2 Protein sidechains [i](#)

In the following table, the Percentiles column shows the percent sidechain outliers of the chain as a percentile score with respect to all X-ray entries followed by that with respect to entries of similar resolution.

The Analysed column shows the number of residues for which the sidechain conformation was analysed, and the total number of residues.

Mol	Chain	Analysed	Rotameric	Outliers	Percentiles
1	A	212/222 (96%)	202 (95%)	10 (5%)	29 14

All (10) residues with a non-rotameric sidechain are listed below:

Mol	Chain	Res	Type
1	A	6	ASP
1	A	45	ARG
1	A	49	ARG
1	A	162	THR
1	A	195	ARG
1	A	203[A]	VAL
1	A	203[B]	VAL
1	A	217[A]	LEU
1	A	217[B]	LEU
1	A	222	TRP

Some sidechains can be flipped to improve hydrogen bonding and reduce clashes. All (1) such sidechains are listed below:

Mol	Chain	Res	Type
1	A	100	GLN

5.3.3 RNA [i](#)

There are no RNA molecules in this entry.

5.4 Non-standard residues in protein, DNA, RNA chains [i](#)

There are no non-standard protein/DNA/RNA residues in this entry.

5.5 Carbohydrates [i](#)

There are no carbohydrates in this entry.

5.6 Ligand geometry [i](#)

2 ligands are modelled in this entry.

In the following table, the Counts columns list the number of bonds (or angles) for which Mogul statistics could be retrieved, the number of bonds (or angles) that are observed in the model and the number of bonds (or angles) that are defined in the Chemical Component Dictionary. The Link column lists molecule types, if any, to which the group is linked. The Z score for a bond length (or angle) is the number of standard deviations the observed value is removed from the expected value. A bond length (or angle) with $|Z| > 2$ is considered an outlier worth inspection. RMSZ is the root-mean-square of all Z scores of the bond lengths (or angles).

Mol	Type	Chain	Res	Link	Bond lengths			Bond angles		
					Counts	RMSZ	# Z > 2	Counts	RMSZ	# Z > 2
2	NAD	A	301	-	40,48,48	0.71	0	44,73,73	1.49	4 (9%)
3	XTV	A	302	-	28,28,28	1.77	5 (17%)	37,39,39	1.85	7 (18%)

In the following table, the Chirals column lists the number of chiral outliers, the number of chiral centers analysed, the number of these observed in the model and the number defined in the Chemical Component Dictionary. Similar counts are reported in the Torsion and Rings columns. '-' means no outliers of that kind were identified.

Mol	Type	Chain	Res	Link	Chirals	Torsions	Rings
2	NAD	A	301	-	-	0/22/62/62	0/5/5/5
3	XTV	A	302	-	-	0/14/16/16	0/3/4/4

All (5) bond length outliers are listed below:

Mol	Chain	Res	Type	Atoms	Z	Observed(Å)	Ideal(Å)
3	A	302	XTV	NAO-NAP	-5.03	1.24	1.34

Continued on next page...

Continued from previous page...

Mol	Chain	Res	Type	Atoms	Z	Observed(Å)	Ideal(Å)
3	A	302	XTV	CAC-NAA	-4.46	1.03	1.14
3	A	302	XTV	CAN-CAS	-4.41	1.41	1.51
3	A	302	XTV	NAP-NAY	-3.16	1.28	1.34
3	A	302	XTV	CAU-NAO	-2.05	1.31	1.33

All (11) bond angle outliers are listed below:

Mol	Chain	Res	Type	Atoms	Z	Observed(°)	Ideal(°)
2	A	301	NAD	C4B-O4B-C1B	-5.22	104.38	109.83
3	A	302	XTV	CAM-CAX-CAU	-4.11	115.50	120.33
3	A	302	XTV	CAE-CAD-CAF	-3.22	115.79	120.20
2	A	301	NAD	C4D-O4D-C1D	-2.95	106.75	109.83
3	A	302	XTV	CAU-CAK-NAY	-2.19	103.08	106.42
3	A	302	XTV	CAJ-CAR-CAV	-2.17	117.52	119.78
3	A	302	XTV	CAN-NAY-CAK	3.22	133.30	129.19
2	A	301	NAD	O2A-PA-O1A	3.46	129.74	112.14
3	A	302	XTV	CAD-CAE-CAG	4.13	125.85	120.20
2	A	301	NAD	PN-O3-PA	4.80	148.77	132.63
3	A	302	XTV	NAO-NAP-NAY	5.60	111.54	107.31

There are no chirality outliers.

There are no torsion outliers.

There are no ring outliers.

No monomer is involved in short contacts.

5.7 Other polymers [i](#)

There are no such residues in this entry.

5.8 Polymer linkage issues [i](#)

There are no chain breaks in this entry.

6 Fit of model and data [i](#)

6.1 Protein, DNA and RNA chains [i](#)

In the following table, the column labelled ‘#RSRZ> 2’ contains the number (and percentage) of RSRZ outliers, followed by percent RSRZ outliers for the chain as percentile scores relative to all X-ray entries and entries of similar resolution. The OWAB column contains the minimum, median, 95th percentile and maximum values of the occupancy-weighted average B-factor per residue. The column labelled ‘Q< 0.9’ lists the number of (and percentage) of residues with an average occupancy less than 0.9.

Mol	Chain	Analysed	<RSRZ>	#RSRZ>2	OWAB(Å ²)	Q<0.9
1	A	268/289 (92%)	0.01	8 (2%) 50 59	24, 45, 70, 87	0

All (8) RSRZ outliers are listed below:

Mol	Chain	Res	Type	RSRZ
1	A	2	THR	5.0
1	A	203[A]	VAL	4.4
1	A	207[A]	LEU	4.0
1	A	84	ALA	3.9
1	A	206[A]	ALA	3.4
1	A	57	LYS	3.2
1	A	83	GLY	2.3
1	A	59	PRO	2.0

6.2 Non-standard residues in protein, DNA, RNA chains [i](#)

There are no non-standard protein/DNA/RNA residues in this entry.

6.3 Carbohydrates [i](#)

There are no carbohydrates in this entry.

6.4 Ligands [i](#)

In the following table, the Atoms column lists the number of modelled atoms in the group and the number defined in the chemical component dictionary. The B-factors column lists the minimum, median, 95th percentile and maximum values of B factors of atoms in the group. The column labelled ‘Q< 0.9’ lists the number of atoms with occupancy less than 0.9.

Mol	Type	Chain	Res	Atoms	RSCC	RSR	B-factors(\AA^2)	Q<0.9
3	XTV	A	302	25/25	0.98	0.08	28,33,38,39	0
2	NAD	A	301	44/44	0.98	0.08	30,35,42,45	0

6.5 Other polymers [i](#)

There are no such residues in this entry.