



Full wwPDB EM Validation Report ⓘ

Feb 25, 2023 – 02:37 PM EST

PDB ID : 7UIK
EMDB ID : EMD-26547
Title : Mediator-PIC Early (Tail A + Upstream DNA & Activator)
Authors : Gorbea Colon, J.J.; Chen, S.-F.; Tsai, K.L.; Murakami, K.
Deposited on : 2022-03-29
Resolution : 7.70 Å (reported)

This is a Full wwPDB EM Validation Report for a publicly released PDB entry.

We welcome your comments at validation@mail.wwpdb.org

A user guide is available at

<https://www.wwpdb.org/validation/2017/EMValidationReportHelp>

with specific help available everywhere you see the ⓘ symbol.

The types of validation reports are described at

<http://www.wwpdb.org/validation/2017/FAQs#types>.

The following versions of software and data (see [references ⓘ](#)) were used in the production of this report:

EMDB validation analysis : 0.0.1.dev43
MolProbity : 4.02b-467
Percentile statistics : 20191225.v01 (using entries in the PDB archive December 25th 2019)
MapQ : 1.9.9
Ideal geometry (proteins) : Engh & Huber (2001)
Ideal geometry (DNA, RNA) : Parkinson et al. (1996)
Validation Pipeline (wwPDB-VP) : 2.32.1

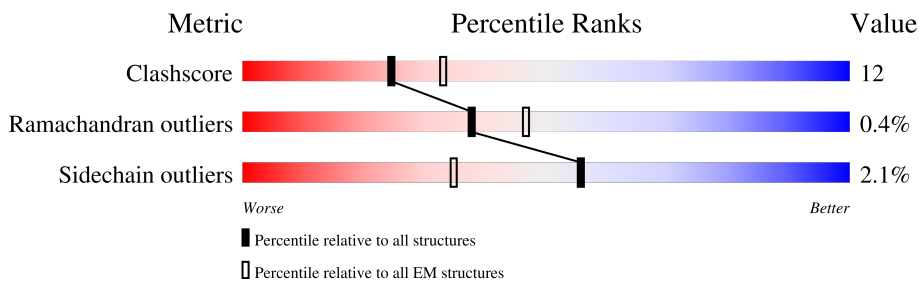
1 Overall quality at a glance i

The following experimental techniques were used to determine the structure:

ELECTRON MICROSCOPY

The reported resolution of this entry is 7.70 Å.

Percentile scores (ranging between 0-100) for global validation metrics of the entry are shown in the following graphic. The table shows the number of entries on which the scores are based.




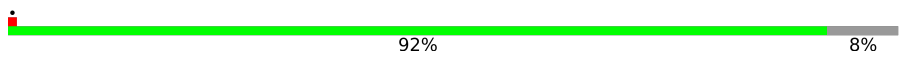
Metric	Whole archive (#Entries)	EM structures (#Entries)
Clashscore	158937	4297
Ramachandran outliers	154571	4023
Sidechain outliers	154315	3826

The table below summarises the geometric issues observed across the polymeric chains and their fit to the map. The red, orange, yellow and green segments of the bar indicate the fraction of residues that contain outliers for ≥ 3 , 2, 1 and 0 types of geometric quality criteria respectively. A grey segment represents the fraction of residues that are not modelled. The numeric value for each fraction is indicated below the corresponding segment, with a dot representing fractions $\leq 5\%$. The upper red bar (where present) indicates the fraction of residues that have poor fit to the EM map (all-atom inclusion $< 40\%$). The numeric value is given above the bar.

Mol	Chain	Length	Quality of chain
1	X	38	<div style="display: flex; align-items: center;"> <div style="width: 18%; height: 10px; background-color: red; margin-right: 5px;"></div> <div style="width: 87%; height: 10px; background-color: yellow; margin-right: 5px;"></div> <div style="width: 11%; height: 10px; background-color: orange;"></div> </div> <p style="font-size: small; margin-top: 5px;">. 18% 87% 11%</p>
2	Y	37	<div style="display: flex; align-items: center;"> <div style="width: 8%; height: 10px; background-color: green; margin-right: 5px;"></div> <div style="width: 30%; height: 10px; background-color: red; margin-right: 5px;"></div> <div style="width: 76%; height: 10px; background-color: yellow; margin-right: 5px;"></div> <div style="width: 16%; height: 10px; background-color: orange;"></div> </div> <p style="font-size: small; margin-top: 5px;">8% 30% 76% 16%</p>
3	T	147	<div style="display: flex; align-items: center;"> <div style="width: 23%; height: 10px; background-color: green; margin-right: 5px;"></div> <div style="width: 27%; height: 10px; background-color: red; margin-right: 5px;"></div> <div style="width: 22%; height: 10px; background-color: yellow; margin-right: 5px;"></div> <div style="width: 14%; height: 10px; background-color: orange; margin-right: 5px;"></div> <div style="width: 39%; height: 10px; background-color: grey;"></div> </div> <p style="font-size: small; margin-top: 5px;">23% 27% 22% 14% . 39%</p>
3	U	147	<div style="display: flex; align-items: center;"> <div style="width: 22%; height: 10px; background-color: green; margin-right: 5px;"></div> <div style="width: 31%; height: 10px; background-color: red; margin-right: 5px;"></div> <div style="width: 24%; height: 10px; background-color: yellow; margin-right: 5px;"></div> <div style="width: 12%; height: 10px; background-color: orange; margin-right: 5px;"></div> <div style="width: 39%; height: 10px; background-color: grey;"></div> </div> <p style="font-size: small; margin-top: 5px;">22% 31% 24% 12% . 39%</p>
4	o	1081	<div style="display: flex; align-items: center;"> <div style="width: 10%; height: 10px; background-color: green; margin-right: 5px;"></div> <div style="width: 90%; height: 10px; background-color: grey;"></div> </div> <p style="font-size: small; margin-top: 5px;">. 10% 90%</p>
5	b	431	<div style="display: flex; align-items: center;"> <div style="width: 15%; height: 10px; background-color: green; margin-right: 5px;"></div> <div style="width: 85%; height: 10px; background-color: grey;"></div> </div> <p style="font-size: small; margin-top: 5px;">. 15% 85%</p>
6	c	397	<div style="display: flex; align-items: center;"> <div style="width: 28%; height: 10px; background-color: green; margin-right: 5px;"></div> <div style="width: 72%; height: 10px; background-color: grey;"></div> </div> <p style="font-size: small; margin-top: 5px;">. 28% 72%</p>
7	n	241	<div style="display: flex; align-items: center;"> <div style="width: 9%; height: 10px; background-color: red; margin-right: 5px;"></div> <div style="width: 90%; height: 10px; background-color: green; margin-right: 5px;"></div> <div style="width: 9%; height: 10px; background-color: grey;"></div> </div> <p style="font-size: small; margin-top: 5px;">. 9% 90% . 9%</p>

Continued on next page...

Continued from previous page...

Mol	Chain	Length	Quality of chain
8	e	1132	 64% 36%
9	p	974	 92% 8%

The following table lists non-polymeric compounds, carbohydrate monomers and non-standard residues in protein, DNA, RNA chains that are outliers for geometric or electron-density-fit criteria:

Mol	Type	Chain	Res	Chirality	Geometry	Clashes	Electron density
10	ZN	T	201	-	-	X	-

2 Entry composition i

There are 10 unique types of molecules in this entry. The entry contains 20237 atoms, of which 0 are hydrogens and 0 are deuteriums.

In the tables below, the AltConf column contains the number of residues with at least one atom in alternate conformation and the Trace column contains the number of residues modelled with at most 2 atoms.

- Molecule 1 is a DNA chain called DNA (38-MER).

Mol	Chain	Residues	Atoms					AltConf	Trace
			Total	C	N	O	P		
1	X	38	774	367	146	224	37	0	0

- Molecule 2 is a DNA chain called DNA (37-MER).

Mol	Chain	Residues	Atoms					AltConf	Trace
			Total	C	N	O	P		
2	Y	37	761	359	142	223	37	0	0

- Molecule 3 is a protein called Regulatory protein GAL4.

Mol	Chain	Residues	Atoms					AltConf	Trace
			Total	C	N	O	S		
3	T	89	727	459	130	130	8	0	0
3	U	89	727	459	130	130	8	0	0

- Molecule 4 is a protein called Mediator of RNA polymerase II transcription subunit 15.

Mol	Chain	Residues	Atoms					AltConf	Trace
			Total	C	N	O	S		
4	o	111	894	558	161	169	6	0	0

- Molecule 5 is a protein called Mediator of RNA polymerase II transcription subunit 2.

Mol	Chain	Residues	Atoms					AltConf	Trace
			Total	C	N	O	S		
5	b	65	516	328	82	102	4	0	0

- Molecule 6 is a protein called Mediator of RNA polymerase II transcription subunit 3.

Mol	Chain	Residues	Atoms					AltConf	Trace
			Total	C	N	O	S		
6	c	110	891	560	155	172	4	0	0

- Molecule 7 is a protein called Mediator of RNA polymerase II transcription subunit 14.

Mol	Chain	Residues	Atoms					AltConf	Trace
			Total	C	N	O	S		
7	n	220	1780	1136	302	333	9	0	0

- Molecule 8 is a protein called Mediator of RNA polymerase II transcription subunit 5.

Mol	Chain	Residues	Atoms					AltConf	Trace
			Total	C	N	O	S		
8	e	729	5916	3826	956	1120	14	0	0

- Molecule 9 is a protein called Mediator of RNA polymerase II transcription subunit 16.

Mol	Chain	Residues	Atoms					AltConf	Trace
			Total	C	N	O	S		
9	p	895	7247	4668	1202	1342	35	0	0

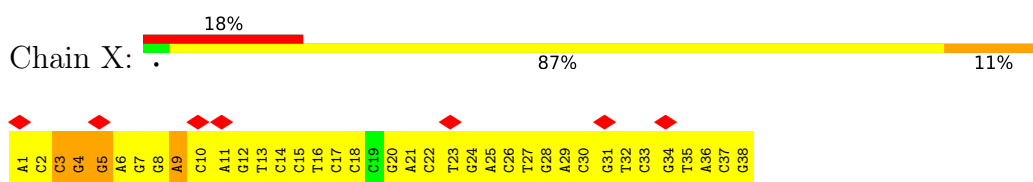
- Molecule 10 is ZINC ION (three-letter code: ZN) (formula: Zn) (labeled as "Ligand of Interest" by depositor).

Mol	Chain	Residues	Atoms		AltConf
			Total	Zn	
10	T	2	2	2	0
10	U	2	2	2	0

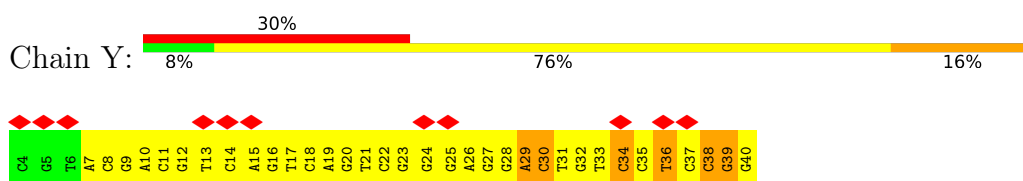
3 Residue-property plots [i](#)

These plots are drawn for all protein, RNA, DNA and oligosaccharide chains in the entry. The first graphic for a chain summarises the proportions of the various outlier classes displayed in the second graphic. The second graphic shows the sequence view annotated by issues in geometry and atom inclusion in map density. Residues are color-coded according to the number of geometric quality criteria for which they contain at least one outlier: green = 0, yellow = 1, orange = 2 and red = 3 or more. A red diamond above a residue indicates a poor fit to the EM map for this residue (all-atom inclusion < 40%). Stretches of 2 or more consecutive residues without any outlier are shown as a green connector. Residues present in the sample, but not in the model, are shown in grey.

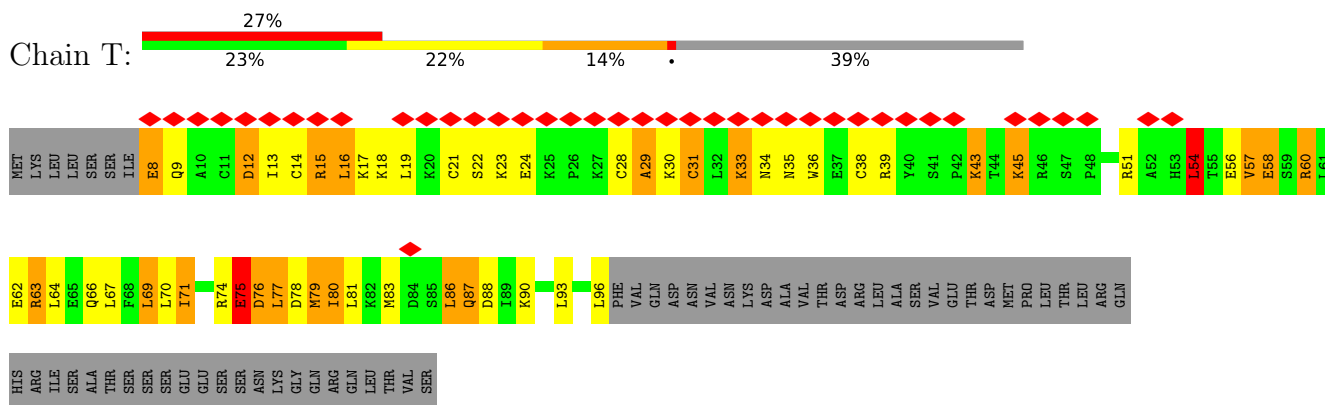
- Molecule 1: DNA (38-MER)



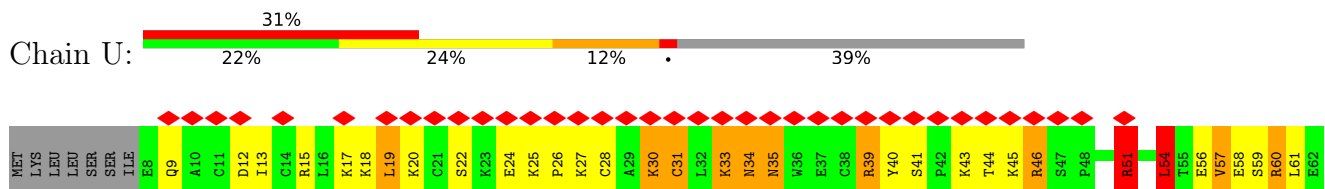
- Molecule 2: DNA (37-MER)



- Molecule 3: Regulatory protein GAL4



- Molecule 3: Regulatory protein GAL4



4 Experimental information

Property	Value	Source
EM reconstruction method	SINGLE PARTICLE	Depositor
Imposed symmetry	POINT, Not provided	
Number of particles used	199834	Depositor
Resolution determination method	FSC 0.143 CUT-OFF	Depositor
CTF correction method	NONE	Depositor
Microscope	FEI TITAN KRIOS	Depositor
Voltage (kV)	300	Depositor
Electron dose ($e^-/\text{\AA}^2$)	42	Depositor
Minimum defocus (nm)	500	Depositor
Maximum defocus (nm)	3000	Depositor
Magnification	64000	Depositor
Image detector	GATAN K3 (6k x 4k)	Depositor
Maximum map value	0.050	Depositor
Minimum map value	-0.020	Depositor
Average map value	-0.001	Depositor
Map value standard deviation	0.003	Depositor
Recommended contour level	0.008	Depositor
Map size (\AA)	331.2, 331.2, 331.2	wwPDB
Map dimensions	240, 240, 240	wwPDB
Map angles ($^\circ$)	90.0, 90.0, 90.0	wwPDB
Pixel spacing (\AA)	1.38, 1.38, 1.38	Depositor

5 Model quality i

5.1 Standard geometry i

Bond lengths and bond angles in the following residue types are not validated in this section:
ZN

The Z score for a bond length (or angle) is the number of standard deviations the observed value is removed from the expected value. A bond length (or angle) with $|Z| > 5$ is considered an outlier worth inspection. RMSZ is the root-mean-square of all Z scores of the bond lengths (or angles).

Mol	Chain	Bond lengths		Bond angles	
		RMSZ	# Z >5	RMSZ	# Z >5
1	X	1.64	17/868 (2.0%)	2.30	67/1337 (5.0%)
2	Y	1.67	11/853 (1.3%)	2.56	87/1315 (6.6%)
3	T	1.55	10/736 (1.4%)	1.56	12/983 (1.2%)
3	U	1.59	11/736 (1.5%)	1.57	13/983 (1.3%)
4	o	0.24	0/904	0.53	0/1202
5	b	0.26	0/520	0.49	0/693
6	c	0.26	0/902	0.52	0/1215
7	n	0.25	0/1818	0.45	0/2459
8	e	0.24	0/6033	0.42	0/8183
9	p	0.25	0/7413	0.44	0/10031
All	All	0.67	49/20783 (0.2%)	0.94	179/28401 (0.6%)

Chiral center outliers are detected by calculating the chiral volume of a chiral center and verifying if the center is modelled as a planar moiety or with the opposite hand. A planarity outlier is detected by checking planarity of atoms in a peptide group, atoms in a mainchain group or atoms of a sidechain that are expected to be planar.

Mol	Chain	#Chirality outliers	#Planarity outliers
3	T	0	2

All (49) bond length outliers are listed below:

Mol	Chain	Res	Type	Atoms	Z	Observed(Å)	Ideal(Å)
3	U	31	CYS	CB-SG	13.55	2.05	1.82
1	X	7	DG	C6-O6	10.95	1.34	1.24
3	T	31	CYS	CB-SG	10.34	1.99	1.82
1	X	13	DT	C1'-N1	9.15	1.61	1.49
2	Y	29	DA	N3-C4	-8.99	1.29	1.34
2	Y	39	DG	C3'-O3'	8.95	1.55	1.44
1	X	11	DA	C6-N1	8.47	1.41	1.35
3	T	62	GLU	CG-CD	7.85	1.63	1.51

Continued on next page...

Continued from previous page...

Mol	Chain	Res	Type	Atoms	Z	Observed(Å)	Ideal(Å)
2	Y	31	DT	C5-C7	7.84	1.54	1.50
2	Y	32	DG	C6-O6	7.80	1.31	1.24
1	X	12	DG	C6-O6	7.75	1.31	1.24
2	Y	34	DC	O4'-C1'	-7.67	1.33	1.42
1	X	8	DG	N7-C5	7.50	1.43	1.39
1	X	14	DC	C4'-O4'	7.36	1.52	1.45
2	Y	31	DT	C2-O2	-7.25	1.16	1.22
3	U	59	SER	CB-OG	-7.10	1.33	1.42
2	Y	28	DG	C3'-O3'	-6.90	1.34	1.44
1	X	1	DA	N9-C4	-6.86	1.33	1.37
1	X	11	DA	O3'-P	-6.84	1.52	1.61
3	U	72	PHE	CB-CG	-6.78	1.39	1.51
3	T	56	GLU	CD-OE1	6.63	1.32	1.25
3	T	58	GLU	CG-CD	6.51	1.61	1.51
3	U	46	ARG	CG-CD	6.51	1.68	1.51
1	X	12	DG	C2-N2	6.22	1.40	1.34
3	U	56	GLU	CG-CD	6.16	1.61	1.51
3	U	68	PHE	CE1-CZ	6.11	1.49	1.37
1	X	10	DC	C3'-O3'	-6.11	1.36	1.44
3	T	56	GLU	CG-CD	6.01	1.60	1.51
2	Y	36	DT	C2-O2	-5.93	1.17	1.22
1	X	11	DA	C8-N7	5.85	1.35	1.31
1	X	7	DG	C6-N1	5.65	1.43	1.39
3	U	60	ARG	CG-CD	5.64	1.66	1.51
1	X	13	DT	C2-N3	-5.63	1.33	1.37
3	T	75	GLU	CB-CG	5.62	1.62	1.52
3	U	51	ARG	N-CA	-5.61	1.35	1.46
3	U	57	VAL	CB-CG1	-5.53	1.41	1.52
2	Y	33	DT	C2-N3	-5.52	1.33	1.37
1	X	13	DT	O3'-P	-5.48	1.54	1.61
2	Y	40	DG	N9-C8	5.42	1.41	1.37
3	T	51	ARG	CZ-NH2	5.39	1.40	1.33
3	U	56	GLU	CD-OE1	5.38	1.31	1.25
3	T	75	GLU	CG-CD	5.34	1.59	1.51
1	X	10	DC	P-O5'	5.31	1.65	1.59
3	U	77	LEU	CG-CD1	-5.22	1.32	1.51
2	Y	31	DT	C5-C6	5.17	1.38	1.34
3	T	57	VAL	CB-CG1	-5.17	1.42	1.52
1	X	15	DC	N3-C4	-5.13	1.30	1.33
3	T	90	LYS	CD-CE	5.06	1.63	1.51
1	X	11	DA	N3-C4	-5.03	1.31	1.34

All (179) bond angle outliers are listed below:

Mol	Chain	Res	Type	Atoms	Z	Observed(°)	Ideal(°)
2	Y	31	DT	N3-C2-O2	-25.43	107.05	122.30
1	X	13	DT	O4'-C1'-N1	-17.59	95.69	108.00
2	Y	31	DT	N3-C4-O4	-15.39	110.67	119.90
2	Y	33	DT	O4'-C1'-N1	-13.52	98.53	108.00
2	Y	37	DC	O4'-C1'-N1	-13.19	98.77	108.00
3	U	51	ARG	NE-CZ-NH2	-12.70	113.95	120.30
1	X	1	DA	O4'-C1'-N9	-12.64	99.15	108.00
1	X	1	DA	C2-N3-C4	-12.62	104.29	110.60
1	X	7	DG	N1-C6-O6	11.43	126.76	119.90
2	Y	32	DG	C4-C5-N7	-11.41	106.23	110.80
2	Y	32	DG	C5-N7-C8	11.26	109.93	104.30
2	Y	32	DG	P-O3'-C3'	11.19	133.12	119.70
2	Y	31	DT	N1-C2-N3	10.94	121.16	114.60
2	Y	31	DT	N1-C2-O2	10.87	131.79	123.10
1	X	13	DT	N3-C4-O4	10.27	126.06	119.90
1	X	1	DA	C5-C6-N1	-10.13	112.64	117.70
1	X	11	DA	O5'-P-OP2	-10.03	96.68	105.70
2	Y	32	DG	N7-C8-N9	-9.99	108.10	113.10
2	Y	39	DG	P-O3'-C3'	9.98	131.68	119.70
2	Y	34	DC	C2-N3-C4	-9.84	114.98	119.90
2	Y	34	DC	N1-C2-O2	-9.74	113.06	118.90
3	U	76	ASP	CB-CG-OD1	-9.44	109.80	118.30
3	U	76	ASP	CB-CG-OD2	9.37	126.73	118.30
2	Y	37	DC	N3-C4-C5	-9.18	118.23	121.90
2	Y	38	DC	N1-C2-O2	-9.15	113.41	118.90
2	Y	29	DA	N1-C2-N3	9.12	133.86	129.30
1	X	12	DG	P-O3'-C3'	9.07	130.59	119.70
1	X	11	DA	C5-N7-C8	-9.02	99.39	103.90
2	Y	27	DG	C8-N9-C4	-9.00	102.80	106.40
2	Y	34	DC	N3-C4-C5	8.82	125.43	121.90
1	X	7	DG	O5'-P-OP2	-8.79	97.79	105.70
1	X	9	DA	O5'-P-OP1	-8.74	97.83	105.70
3	U	51	ARG	NE-CZ-NH1	8.61	124.61	120.30
2	Y	31	DT	C5-C4-O4	8.54	130.88	124.90
1	X	3	DC	C6-N1-C2	-8.41	116.94	120.30
2	Y	26	DA	O5'-P-OP2	-8.33	98.20	105.70
1	X	6	DA	O4'-C1'-N9	-8.27	102.21	108.00
1	X	7	DG	C5-C6-N1	-8.25	107.37	111.50
1	X	12	DG	O4'-C1'-C2'	-8.21	99.33	105.90
2	Y	37	DC	C4-C5-C6	8.21	121.50	117.40
1	X	13	DT	C2-N3-C4	8.15	132.09	127.20
3	T	88	ASP	CB-CG-OD2	-8.13	110.98	118.30
3	T	63	ARG	NE-CZ-NH1	-8.13	116.24	120.30

Continued on next page...

Continued from previous page...

Mol	Chain	Res	Type	Atoms	Z	Observed(°)	Ideal(°)
2	Y	31	DT	C2-N3-C4	-8.09	122.34	127.20
2	Y	38	DC	O4'-C1'-N1	-8.09	102.33	108.00
2	Y	29	DA	C5-C6-N6	8.06	130.15	123.70
2	Y	32	DG	N9-C4-C5	7.99	108.59	105.40
2	Y	29	DA	N9-C4-C5	7.86	108.94	105.80
1	X	4	DG	P-O3'-C3'	7.81	129.07	119.70
1	X	11	DA	OP1-P-OP2	7.80	131.30	119.60
2	Y	34	DC	C6-N1-C2	7.79	123.41	120.30
1	X	11	DA	N7-C8-N9	7.77	117.68	113.80
2	Y	37	DC	N1-C2-O2	-7.75	114.25	118.90
1	X	4	DG	N1-C2-N3	7.71	128.52	123.90
1	X	11	DA	C6-N1-C2	-7.55	114.07	118.60
1	X	5	DG	C4-C5-N7	-7.53	107.79	110.80
2	Y	36	DT	N1-C2-N3	7.52	119.11	114.60
2	Y	32	DG	O5'-P-OP2	-7.50	98.95	105.70
1	X	7	DG	C6-C5-N7	-7.46	125.93	130.40
2	Y	38	DC	C2-N3-C4	-7.42	116.19	119.90
3	U	15	ARG	NE-CZ-NH1	7.41	124.00	120.30
2	Y	36	DT	N3-C2-O2	-7.35	117.89	122.30
2	Y	26	DA	O4'-C1'-N9	-7.33	102.87	108.00
2	Y	37	DC	C3'-C2'-C1'	-7.28	93.76	102.50
2	Y	34	DC	C5-C6-N1	-7.27	117.37	121.00
3	T	16	LEU	CB-CG-CD2	-7.24	98.69	111.00
1	X	4	DG	O3'-P-O5'	7.24	117.76	104.00
2	Y	39	DG	C5-C6-O6	7.24	132.94	128.60
3	U	77	LEU	CB-CG-CD1	-7.22	98.72	111.00
3	T	58	GLU	OE1-CD-OE2	-7.18	114.69	123.30
2	Y	40	DG	O4'-C1'-N9	7.07	112.95	108.00
1	X	10	DC	N3-C2-O2	-7.01	116.99	121.90
2	Y	32	DG	C6-C5-N7	6.94	134.56	130.40
1	X	14	DC	N3-C4-C5	6.91	124.67	121.90
1	X	12	DG	N1-C2-N2	6.88	122.39	116.20
2	Y	40	DG	N1-C6-O6	6.85	124.01	119.90
2	Y	33	DT	OP1-P-OP2	-6.80	109.39	119.60
3	T	54	LEU	CB-CG-CD2	6.80	122.57	111.00
2	Y	34	DC	C5-C4-N4	-6.80	115.44	120.20
1	X	8	DG	C5-C6-N1	6.79	114.90	111.50
1	X	11	DA	C5-C6-N6	-6.71	118.33	123.70
2	Y	40	DG	C5-C6-O6	-6.63	124.62	128.60
2	Y	39	DG	N1-C2-N2	-6.59	110.27	116.20
2	Y	39	DG	N1-C6-O6	-6.58	115.95	119.90
2	Y	30	DC	OP2-P-O3'	6.56	119.63	105.20

Continued on next page...

Continued from previous page...

Mol	Chain	Res	Type	Atoms	Z	Observed(°)	Ideal(°)
3	U	67	LEU	CB-CG-CD2	6.54	122.11	111.00
1	X	7	DG	C4-C5-C6	6.53	122.72	118.80
2	Y	30	DC	O3'-P-O5'	-6.52	91.62	104.00
1	X	14	DC	C4-C5-C6	-6.46	114.17	117.40
3	U	60	ARG	NE-CZ-NH2	-6.44	117.08	120.30
2	Y	29	DA	P-O5'-C5'	-6.43	110.62	120.90
2	Y	29	DA	N1-C6-N6	-6.40	114.76	118.60
2	Y	34	DC	N3-C2-O2	6.37	126.36	121.90
3	T	12	ASP	CB-CG-OD1	6.31	123.98	118.30
1	X	2	DC	O5'-P-OP1	-6.31	100.02	105.70
1	X	13	DT	O4'-C1'-C2'	-6.30	100.86	105.90
2	Y	33	DT	C4-C5-C7	6.25	122.75	119.00
1	X	5	DG	C3'-C2'-C1'	-6.18	95.08	102.50
2	Y	32	DG	O4'-C1'-C2'	-6.16	100.97	105.90
2	Y	29	DA	N3-C4-N9	-6.15	122.48	127.40
2	Y	32	DG	OP2-P-O3'	6.13	118.69	105.20
2	Y	34	DC	C2-N1-C1'	-6.13	112.06	118.80
1	X	3	DC	N3-C4-N4	6.12	122.28	118.00
2	Y	27	DG	N3-C4-C5	-6.11	125.55	128.60
2	Y	32	DG	N3-C4-N9	-6.08	122.35	126.00
2	Y	27	DG	N9-C4-C5	6.08	107.83	105.40
2	Y	29	DA	C2-N3-C4	-6.04	107.58	110.60
3	U	54	LEU	CB-CG-CD2	6.04	121.27	111.00
1	X	11	DA	C2-N3-C4	5.99	113.59	110.60
2	Y	29	DA	OP2-P-O3'	5.98	118.36	105.20
1	X	11	DA	C8-N9-C4	-5.92	103.43	105.80
1	X	11	DA	N1-C6-N6	5.91	122.15	118.60
1	X	13	DT	N3-C4-C5	-5.91	111.66	115.20
2	Y	33	DT	N3-C4-O4	-5.91	116.36	119.90
2	Y	34	DC	O4'-C4'-C3'	-5.89	102.14	104.50
1	X	1	DA	N3-C4-C5	5.88	130.92	126.80
1	X	8	DG	C4-C5-C6	-5.87	115.28	118.80
2	Y	28	DG	N1-C6-O6	5.84	123.40	119.90
2	Y	37	DC	N1-C1'-C2'	5.83	123.67	112.60
2	Y	33	DT	C6-N1-C2	-5.82	118.39	121.30
3	U	88	ASP	CB-CG-OD1	5.82	123.53	118.30
3	T	31	CYS	CA-CB-SG	5.80	124.44	114.00
3	T	54	LEU	CB-CA-C	-5.79	99.19	110.20
1	X	1	DA	C5-N7-C8	-5.77	101.02	103.90
1	X	12	DG	C2-N3-C4	5.72	114.76	111.90
1	X	8	DG	C5-N7-C8	-5.71	101.44	104.30
2	Y	26	DA	O4'-C1'-C2'	5.67	110.43	105.90

Continued on next page...

Continued from previous page...

Mol	Chain	Res	Type	Atoms	Z	Observed(°)	Ideal(°)
3	T	60	ARG	NE-CZ-NH2	-5.65	117.47	120.30
1	X	10	DC	C4'-C3'-O3'	-5.59	95.73	109.70
1	X	10	DC	N3-C4-N4	-5.58	114.09	118.00
2	Y	39	DG	O4'-C4'-C3'	5.58	109.35	106.00
2	Y	27	DG	C2-N3-C4	5.57	114.69	111.90
1	X	2	DC	N1-C1'-C2'	5.54	123.12	112.60
1	X	1	DA	N1-C2-N3	5.54	132.07	129.30
2	Y	35	DC	O4'-C1'-N1	-5.52	104.13	108.00
1	X	13	DT	C6-N1-C2	-5.52	118.54	121.30
2	Y	36	DT	C2-N3-C4	-5.51	123.89	127.20
1	X	12	DG	OP2-P-O3'	5.47	117.24	105.20
1	X	9	DA	O5'-P-OP2	5.46	117.26	110.70
1	X	14	DC	O4'-C1'-N1	5.46	111.82	108.00
3	U	54	LEU	CB-CA-C	-5.46	99.82	110.20
1	X	12	DG	N1-C2-N3	-5.46	120.62	123.90
1	X	1	DA	N3-C4-N9	-5.46	123.03	127.40
2	Y	27	DG	C5'-C4'-C3'	-5.45	104.30	114.10
2	Y	32	DG	N1-C6-O6	-5.44	116.64	119.90
1	X	12	DG	N1-C6-O6	5.42	123.15	119.90
1	X	10	DC	C2-N3-C4	-5.36	117.22	119.90
2	Y	31	DT	N3-C4-C5	5.36	118.41	115.20
2	Y	40	DG	N3-C2-N2	-5.35	116.16	119.90
2	Y	38	DC	N1-C2-N3	5.34	122.94	119.20
2	Y	30	DC	P-O3'-C3'	-5.33	113.30	119.70
2	Y	36	DT	O5'-P-OP2	-5.33	100.91	105.70
1	X	15	DC	O4'-C1'-N1	5.33	111.73	108.00
3	U	72	PHE	CB-CA-C	-5.31	99.77	110.40
1	X	14	DC	O4'-C1'-C2'	5.31	110.15	105.90
2	Y	31	DT	OP2-P-O3'	5.31	116.88	105.20
2	Y	38	DC	C4'-C3'-C2'	5.28	107.85	103.10
2	Y	35	DC	OP2-P-O3'	5.27	116.79	105.20
3	T	69	LEU	CA-CB-CG	5.26	127.41	115.30
1	X	1	DA	N7-C8-N9	5.25	116.42	113.80
2	Y	29	DA	C5-C6-N1	-5.22	115.09	117.70
2	Y	30	DC	N1-C2-N3	5.22	122.85	119.20
2	Y	31	DT	C6-N1-C2	-5.21	118.69	121.30
2	Y	32	DG	C5-C6-O6	5.18	131.71	128.60
2	Y	40	DG	O4'-C1'-C2'	5.18	110.05	105.90
1	X	4	DG	N1-C2-N2	-5.17	111.55	116.20
2	Y	40	DG	C1'-O4'-C4'	-5.16	104.94	110.10
1	X	4	DG	C6-N1-C2	-5.13	122.02	125.10
1	X	14	DC	O3'-P-O5'	-5.12	94.27	104.00

Continued on next page...

Continued from previous page...

Mol	Chain	Res	Type	Atoms	Z	Observed(°)	Ideal(°)
1	X	4	DG	O4'-C1'-N9	-5.12	104.42	108.00
1	X	10	DC	N1-C1'-C2'	5.12	122.32	112.60
1	X	14	DC	C2-N1-C1'	-5.10	113.19	118.80
3	T	60	ARG	CG-CD-NE	-5.09	101.11	111.80
3	U	31	CYS	CA-CB-SG	5.08	123.14	114.00
2	Y	28	DG	N9-C1'-C2'	5.07	122.22	112.60
3	T	69	LEU	CB-CG-CD1	-5.04	102.42	111.00
2	Y	30	DC	N3-C4-C5	-5.02	119.89	121.90
1	X	6	DA	C5-N7-C8	5.02	106.41	103.90
1	X	10	DC	OP2-P-O3'	5.02	116.24	105.20

There are no chirality outliers.

All (2) planarity outliers are listed below:

Mol	Chain	Res	Type	Group
3	T	74	ARG	Peptide
3	T	75	GLU	Peptide

5.2 Too-close contacts [i](#)

In the following table, the Non-H and H(model) columns list the number of non-hydrogen atoms and hydrogen atoms in the chain respectively. The H(added) column lists the number of hydrogen atoms added and optimized by MolProbity. The Clashes column lists the number of clashes within the asymmetric unit, whereas Symm-Clashes lists symmetry-related clashes.

Mol	Chain	Non-H	H(model)	H(added)	Clashes	Symm-Clashes
1	X	774	0	425	25	0
2	Y	761	0	414	23	0
3	T	727	0	770	57	0
3	U	727	0	769	66	0
4	o	894	0	930	0	0
5	b	516	0	527	0	0
6	c	891	0	907	0	0
7	n	1780	0	1766	0	0
8	e	5916	0	5956	0	0
9	p	7247	0	7292	0	0
10	T	2	0	0	2	0
10	U	2	0	0	0	0
All	All	20237	0	19756	145	0

The all-atom clashscore is defined as the number of clashes found per 1000 atoms (including

hydrogen atoms). The all-atom clashscore for this structure is 12.

All (145) close contacts within the same asymmetric unit are listed below, sorted by their clash magnitude.

Atom-1	Atom-2	Interatomic distance (Å)	Clash overlap (Å)
3:U:31:CYS:SG	3:U:31:CYS:CB	2.05	1.44
2:Y:25:DG:O6	3:U:18:LYS:NZ	1.72	1.20
3:T:75:GLU:HG2	3:T:76:ASP:H	0.98	1.10
3:T:75:GLU:CG	3:T:76:ASP:H	1.75	0.98
3:T:75:GLU:HG2	3:T:76:ASP:N	1.84	0.91
3:U:83:MET:HE1	3:U:89:ILE:HA	1.58	0.86
1:X:18:DC:OP1	3:U:20:LYS:HD3	1.78	0.82
3:U:80:ILE:HD11	3:U:92:LEU:HG	1.63	0.79
2:Y:25:DG:C6	3:U:18:LYS:NZ	2.51	0.79
1:X:20:DG:C2	2:Y:23:DG:N2	2.50	0.78
3:U:83:MET:CE	3:U:89:ILE:HA	2.13	0.78
3:U:17:LYS:HB3	3:U:19:LEU:CD1	2.16	0.75
2:Y:24:DG:H1'	2:Y:25:DG:H5'	1.68	0.74
3:T:31:CYS:HB3	3:T:38:CYS:HB2	1.69	0.74
3:U:39:ARG:HB2	3:U:39:ARG:NH1	2.07	0.70
3:T:31:CYS:CB	3:T:38:CYS:HB2	2.22	0.69
1:X:4:DG:H1'	1:X:5:DG:H5'	1.75	0.68
1:X:18:DC:OP1	3:U:20:LYS:CD	2.43	0.67
3:U:83:MET:HE1	3:U:89:ILE:CA	2.25	0.67
3:U:17:LYS:HB3	3:U:19:LEU:HD12	1.76	0.66
3:T:12:ASP:O	3:T:15:ARG:HB3	1.97	0.65
3:U:73:PRO:HD2	3:U:76:ASP:OD2	1.96	0.65
3:T:80:ILE:HA	3:T:83:MET:CE	2.28	0.64
3:U:80:ILE:HA	3:U:83:MET:HG3	1.81	0.63
3:U:83:MET:CE	3:U:89:ILE:CA	2.77	0.63
3:T:79:MET:HG2	3:T:80:ILE:N	2.13	0.62
3:U:80:ILE:CD1	3:U:92:LEU:HG	2.28	0.62
2:Y:29:DA:H1'	2:Y:30:DC:H5'	1.81	0.61
2:Y:34:DC:OP2	3:U:51:ARG:HD2	2.01	0.61
3:U:83:MET:HE1	3:U:88:ASP:C	2.21	0.61
3:T:71:ILE:N	3:T:71:ILE:HD13	2.16	0.61
3:T:8:GLU:HA	3:T:8:GLU:OE2	2.00	0.60
3:T:22:SER:HB3	3:T:29:ALA:HB2	1.83	0.60
3:T:21:CYS:SG	10:T:201:ZN:ZN	1.89	0.60
3:T:31:CYS:HA	3:T:36:TRP:HB2	1.83	0.60
3:T:33:LYS:C	3:T:35:ASN:H	2.04	0.60
3:T:21:CYS:HG	10:T:201:ZN:ZN	1.14	0.59
3:U:72:PHE:HB3	3:U:73:PRO:CD	2.32	0.59

Continued on next page...

Continued from previous page...

Atom-1	Atom-2	Interatomic distance (Å)	Clash overlap (Å)
3:U:17:LYS:HB3	3:U:19:LEU:HD11	1.83	0.59
2:Y:38:DC:H2''	2:Y:39:DG:O5'	2.04	0.58
3:U:39:ARG:HB2	3:U:39:ARG:HH11	1.69	0.58
3:U:54:LEU:HD22	3:U:58:GLU:HG3	1.86	0.58
3:U:9:GLN:NE2	3:U:41:SER:O	2.34	0.57
3:U:35:ASN:C	3:U:35:ASN:HD22	2.07	0.57
3:T:14:CYS:SG	3:T:21:CYS:SG	3.01	0.57
3:U:80:ILE:HD11	3:U:92:LEU:CG	2.34	0.57
3:T:24:GLU:HG2	3:T:28:CYS:HA	1.88	0.56
3:U:83:MET:CE	3:U:89:ILE:N	2.69	0.55
3:T:80:ILE:HA	3:T:83:MET:HE2	1.89	0.55
3:T:57:VAL:HG12	3:U:57:VAL:CG1	2.37	0.54
3:T:71:ILE:HD11	3:U:93:LEU:HD21	1.89	0.54
3:U:80:ILE:HD11	3:U:92:LEU:CD1	2.38	0.54
1:X:20:DG:N2	2:Y:23:DG:C2	2.75	0.54
3:T:67:LEU:HD23	3:U:89:ILE:HG23	1.89	0.53
3:T:81:LEU:HD21	3:U:64:LEU:CD1	2.40	0.52
3:T:39:ARG:NH1	3:T:39:ARG:HB2	2.25	0.52
1:X:9:DA:H2'	1:X:9:DA:O5'	2.10	0.51
3:T:77:LEU:HD22	3:T:81:LEU:HG	1.93	0.50
1:X:3:DC:C5	3:T:18:LYS:HB2	2.47	0.50
3:T:75:GLU:CG	3:T:76:ASP:N	2.55	0.50
3:T:43:LYS:O	3:T:45:LYS:HD2	2.12	0.50
3:T:64:LEU:HD13	3:U:64:LEU:HB3	1.94	0.50
1:X:16:DT:H1'	1:X:17:DC:H5'	1.93	0.49
3:T:39:ARG:HB2	3:T:39:ARG:HH11	1.77	0.49
3:U:83:MET:CE	3:U:88:ASP:C	2.81	0.49
3:T:57:VAL:CG1	3:U:57:VAL:HG12	2.43	0.49
3:U:25:LYS:HE3	3:U:40:TYR:CE2	2.48	0.48
3:T:33:LYS:O	3:T:35:ASN:N	2.47	0.48
1:X:37:DC:H2''	1:X:38:DG:C8	2.49	0.47
3:U:22:SER:OG	3:U:28:CYS:HB2	2.13	0.47
1:X:20:DG:C2	2:Y:23:DG:C2	3.01	0.47
3:T:86:LEU:O	3:T:87:GLN:C	2.52	0.47
3:U:51:ARG:O	3:U:51:ARG:HG3	2.12	0.47
3:U:83:MET:HE2	3:U:89:ILE:HG12	1.95	0.47
2:Y:14:DC:H2''	2:Y:15:DA:C8	2.51	0.46
3:T:17:LYS:O	3:T:18:LYS:HB2	2.15	0.46
3:U:83:MET:HE1	3:U:89:ILE:N	2.29	0.46
2:Y:18:DC:H2''	2:Y:19:DA:C8	2.51	0.46
1:X:21:DA:H2''	1:X:22:DC:C6	2.51	0.46

Continued on next page...

Continued from previous page...

Atom-1	Atom-2	Interatomic distance (Å)	Clash overlap (Å)
1:X:24:DG:H2''	1:X:25:DA:C8	2.51	0.46
2:Y:9:DG:H2''	2:Y:10:DA:C8	2.51	0.46
3:T:54:LEU:HD22	3:T:58:GLU:OE1	2.16	0.46
1:X:20:DG:N2	2:Y:23:DG:N2	2.64	0.46
3:U:33:LYS:O	3:U:35:ASN:N	2.49	0.46
3:U:71:ILE:O	3:U:71:ILE:HG22	2.15	0.46
3:T:70:LEU:HD13	3:U:90:LYS:HG3	1.97	0.46
2:Y:19:DA:H2''	2:Y:20:DG:C8	2.52	0.45
3:U:83:MET:HE1	3:U:88:ASP:O	2.15	0.45
3:T:60:ARG:NH1	3:U:81:LEU:HD13	2.31	0.45
3:T:66:GLN:NE2	3:U:86:LEU:CD2	2.79	0.45
2:Y:15:DA:H2''	2:Y:16:DG:C8	2.52	0.45
1:X:23:DT:H2''	1:X:24:DG:C8	2.52	0.45
1:X:27:DT:H2''	1:X:28:DG:C8	2.52	0.45
1:X:33:DC:H2''	1:X:34:DG:C8	2.52	0.45
2:Y:11:DC:H2''	2:Y:12:DG:C8	2.52	0.45
3:T:87:GLN:HE21	3:T:87:GLN:HA	1.81	0.45
3:U:54:LEU:HD22	3:U:58:GLU:CG	2.46	0.45
1:X:28:DG:H2''	1:X:29:DA:C8	2.51	0.45
1:X:30:DC:H2''	1:X:31:DG:C8	2.52	0.45
1:X:35:DT:H2''	1:X:36:DA:C8	2.52	0.45
2:Y:36:DT:P	3:T:15:ARG:HH11	2.40	0.45
2:Y:8:DC:H2''	2:Y:9:DG:C8	2.52	0.44
3:T:8:GLU:N	3:T:23:LYS:HD3	2.32	0.44
3:T:71:ILE:CD1	3:U:93:LEU:HD21	2.47	0.44
3:U:24:GLU:HG3	3:U:28:CYS:HA	1.98	0.44
1:X:20:DG:H2''	1:X:21:DA:C8	2.52	0.44
3:T:13:ILE:O	3:T:14:CYS:C	2.55	0.44
3:U:12:ASP:HB2	3:U:13:ILE:HD12	1.99	0.44
3:T:33:LYS:HE3	3:T:33:LYS:HB3	1.64	0.44
3:U:13:ILE:HD12	3:U:13:ILE:N	2.33	0.44
1:X:4:DG:N7	3:T:18:LYS:NZ	2.63	0.44
3:T:57:VAL:HG11	3:U:57:VAL:HG12	2.00	0.44
3:T:76:ASP:O	3:T:79:MET:N	2.37	0.43
3:U:68:PHE:CD1	3:U:68:PHE:C	2.92	0.43
1:X:36:DA:H2''	1:X:37:DC:C6	2.52	0.43
3:T:80:ILE:HA	3:T:83:MET:HE3	1.97	0.43
1:X:32:DT:H2''	1:X:33:DC:C6	2.54	0.43
3:T:76:ASP:HB3	3:T:79:MET:HB3	2.01	0.43
1:X:25:DA:H2''	1:X:26:DC:C6	2.53	0.43
2:Y:21:DT:H2''	2:Y:22:DC:C5	2.54	0.43

Continued on next page...

Continued from previous page...

Atom-1	Atom-2	Interatomic distance (Å)	Clash overlap (Å)
3:T:54:LEU:HD22	3:T:58:GLU:CD	2.39	0.43
3:T:67:LEU:HD23	3:U:89:ILE:CG2	2.49	0.43
2:Y:10:DA:H2''	2:Y:11:DC:C6	2.54	0.42
3:T:64:LEU:HA	3:T:64:LEU:HD23	1.80	0.42
3:U:69:LEU:HD12	3:U:69:LEU:HA	1.75	0.42
3:U:94:THR:C	3:U:96:LEU:H	2.22	0.42
1:X:29:DA:H2''	1:X:30:DC:C6	2.54	0.42
2:Y:7:DA:H2''	2:Y:8:DC:C6	2.54	0.42
3:T:63:ARG:HH11	3:T:63:ARG:HD2	1.61	0.42
3:U:30:LYS:O	3:U:34:ASN:HB2	2.19	0.42
3:U:77:LEU:HA	3:U:77:LEU:HD23	1.76	0.42
3:U:80:ILE:HD12	3:U:80:ILE:HG23	1.64	0.42
2:Y:17:DT:H2''	2:Y:18:DC:C6	2.54	0.42
3:T:14:CYS:O	3:T:18:LYS:N	2.53	0.42
3:U:60:ARG:O	3:U:61:LEU:C	2.54	0.41
2:Y:13:DT:H2''	2:Y:14:DC:C6	2.54	0.41
3:T:93:LEU:O	3:T:96:LEU:HG	2.20	0.41
3:U:83:MET:HE2	3:U:89:ILE:CG1	2.50	0.41
3:T:57:VAL:CG1	3:U:57:VAL:CG1	2.99	0.41
3:T:81:LEU:HD21	3:U:64:LEU:HD12	2.03	0.41
3:U:83:MET:HE3	3:U:89:ILE:N	2.35	0.41
3:T:77:LEU:O	3:T:81:LEU:HG	2.21	0.41
3:U:76:ASP:O	3:U:77:LEU:C	2.59	0.40
3:U:71:ILE:HG22	3:U:72:PHE:CD1	2.56	0.40
3:U:17:LYS:CB	3:U:19:LEU:HD12	2.47	0.40

There are no symmetry-related clashes.

5.3 Torsion angles [i](#)

5.3.1 Protein backbone [i](#)

In the following table, the Percentiles column shows the percent Ramachandran outliers of the chain as a percentile score with respect to all PDB entries followed by that with respect to all EM entries.

The Analysed column shows the number of residues for which the backbone conformation was analysed, and the total number of residues.

Mol	Chain	Analysed	Favoured	Allowed	Outliers	Percentiles
3	T	87/147 (59%)	72 (83%)	10 (12%)	5 (6%)	1 18

Continued on next page...

Continued from previous page...

Mol	Chain	Analysed	Favoured	Allowed	Outliers	Percentiles	
3	U	87/147 (59%)	76 (87%)	8 (9%)	3 (3%)	3	26
4	o	109/1081 (10%)	109 (100%)	0	0	100	100
5	b	61/431 (14%)	61 (100%)	0	0	100	100
6	c	108/397 (27%)	107 (99%)	1 (1%)	0	100	100
7	n	216/241 (90%)	212 (98%)	4 (2%)	0	100	100
8	e	721/1132 (64%)	711 (99%)	10 (1%)	0	100	100
9	p	885/974 (91%)	876 (99%)	9 (1%)	0	100	100
All	All	2274/4550 (50%)	2224 (98%)	42 (2%)	8 (0%)	38	72

All (8) Ramachandran outliers are listed below:

Mol	Chain	Res	Type
3	T	29	ALA
3	T	75	GLU
3	T	76	ASP
3	T	33	LYS
3	U	33	LYS
3	T	34	ASN
3	U	27	LYS
3	U	26	PRO

5.3.2 Protein sidechains [i](#)

In the following table, the Percentiles column shows the percent sidechain outliers of the chain as a percentile score with respect to all PDB entries followed by that with respect to all EM entries.

The Analysed column shows the number of residues for which the sidechain conformation was analysed, and the total number of residues.

Mol	Chain	Analysed	Rotameric	Outliers	Percentiles	
3	T	84/138 (61%)	67 (80%)	17 (20%)	1	7
3	U	84/138 (61%)	66 (79%)	18 (21%)	1	6
4	o	103/944 (11%)	100 (97%)	3 (3%)	42	64
5	b	60/389 (15%)	59 (98%)	1 (2%)	60	78
6	c	100/339 (30%)	100 (100%)	0	100	100
7	n	205/222 (92%)	202 (98%)	3 (2%)	65	80

Continued on next page...

Continued from previous page...

Mol	Chain	Analysed	Rotameric	Outliers	Percentiles	
8	e	684/1053 (65%)	683 (100%)	1 (0%)	93	97
9	p	826/897 (92%)	824 (100%)	2 (0%)	93	96
All	All	2146/4120 (52%)	2101 (98%)	45 (2%)	56	72

All (45) residues with a non-rotameric sidechain are listed below:

Mol	Chain	Res	Type
3	T	8	GLU
3	T	9	GLN
3	T	15	ARG
3	T	16	LEU
3	T	19	LEU
3	T	30	LYS
3	T	43	LYS
3	T	45	LYS
3	T	54	LEU
3	T	69	LEU
3	T	71	ILE
3	T	77	LEU
3	T	78	ASP
3	T	79	MET
3	T	80	ILE
3	T	86	LEU
3	T	87	GLN
3	U	19	LEU
3	U	30	LYS
3	U	34	ASN
3	U	35	ASN
3	U	39	ARG
3	U	43	LYS
3	U	44	THR
3	U	45	LYS
3	U	46	ARG
3	U	51	ARG
3	U	54	LEU
3	U	63	ARG
3	U	64	LEU
3	U	67	LEU
3	U	69	LEU
3	U	74	ARG
3	U	77	LEU

Continued on next page...

Continued from previous page...

Mol	Chain	Res	Type
3	U	93	LEU
4	o	862	LYS
4	o	870	LYS
4	o	907	LYS
5	b	78	LYS
7	n	979	LYS
7	n	994	ARG
7	n	1050	ARG
8	e	1128	LYS
9	p	220	ARG
9	p	558	LYS

Sometimes sidechains can be flipped to improve hydrogen bonding and reduce clashes. All (12) such sidechains are listed below:

Mol	Chain	Res	Type
3	T	66	GLN
3	T	87	GLN
3	U	35	ASN
6	c	32	GLN
7	n	913	ASN
8	e	360	HIS
8	e	916	ASN
9	p	161	ASN
9	p	313	HIS
9	p	327	ASN
9	p	536	GLN
9	p	846	HIS

5.3.3 RNA [i](#)

There are no RNA molecules in this entry.

5.4 Non-standard residues in protein, DNA, RNA chains [i](#)

There are no non-standard protein/DNA/RNA residues in this entry.

5.5 Carbohydrates [i](#)

There are no monosaccharides in this entry.

5.6 Ligand geometry

Of 4 ligands modelled in this entry, 4 are monoatomic - leaving 0 for Mogul analysis.

There are no bond length outliers.

There are no bond angle outliers.

There are no chirality outliers.

There are no torsion outliers.

There are no ring outliers.

No monomer is involved in short contacts.

5.7 Other polymers

There are no such residues in this entry.

5.8 Polymer linkage issues

There are no chain breaks in this entry.

6 Map visualisation [i](#)

This section contains visualisations of the EMDB entry EMD-26547. These allow visual inspection of the internal detail of the map and identification of artifacts.

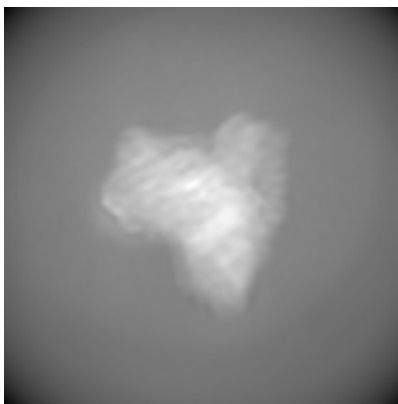
Images derived from a raw map, generated by summing the deposited half-maps, are presented below the corresponding image components of the primary map to allow further visual inspection and comparison with those of the primary map.

6.1 Orthogonal projections [i](#)

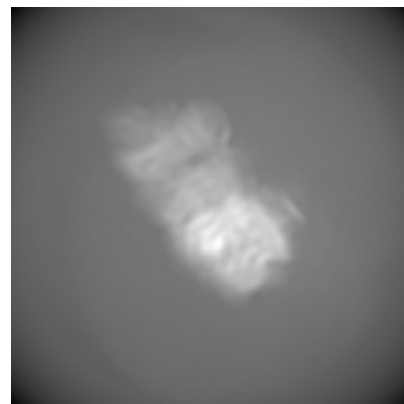
6.1.1 Primary map



X

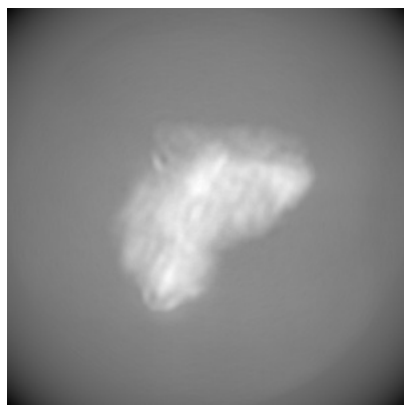


Y

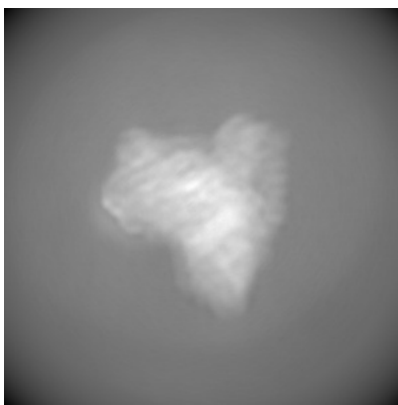


Z

6.1.2 Raw map



X



Y

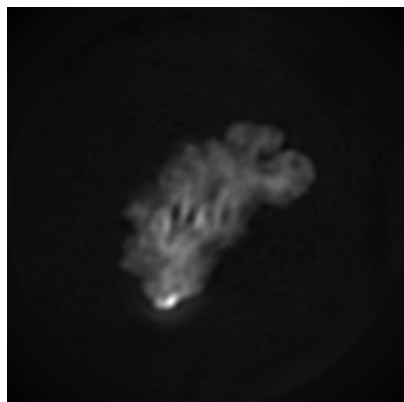


Z

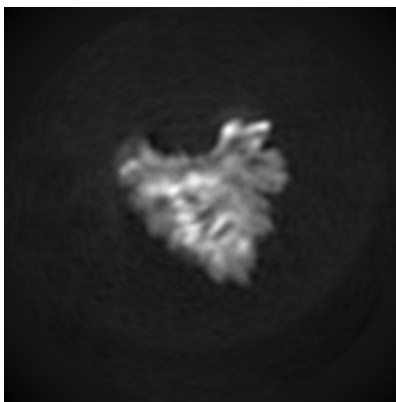
The images above show the map projected in three orthogonal directions.

6.2 Central slices [i](#)

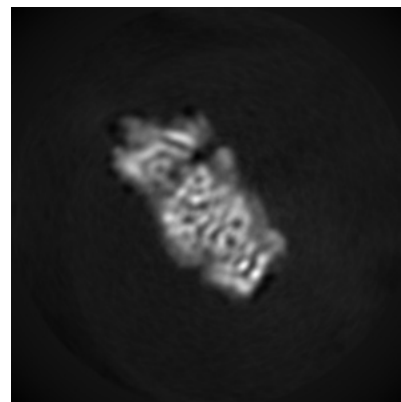
6.2.1 Primary map



X Index: 120

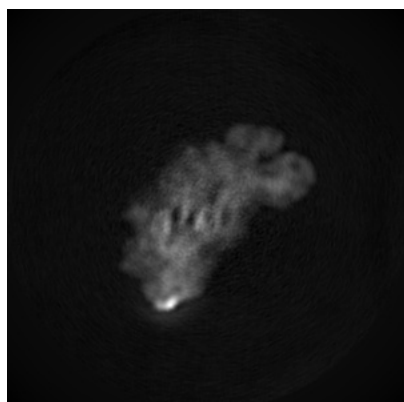


Y Index: 120

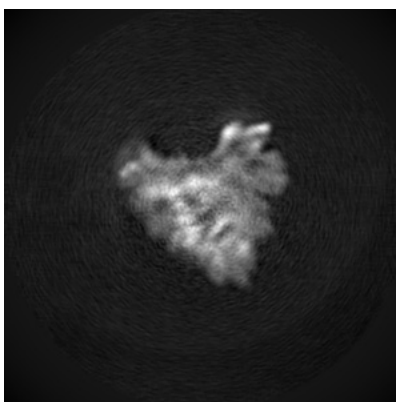


Z Index: 120

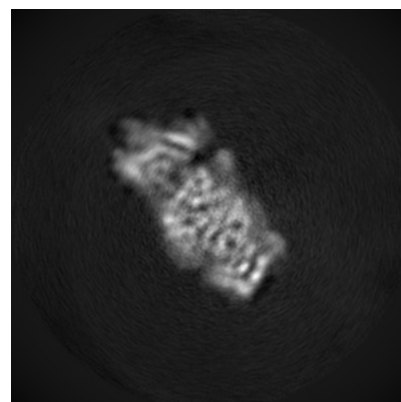
6.2.2 Raw map



X Index: 120



Y Index: 120

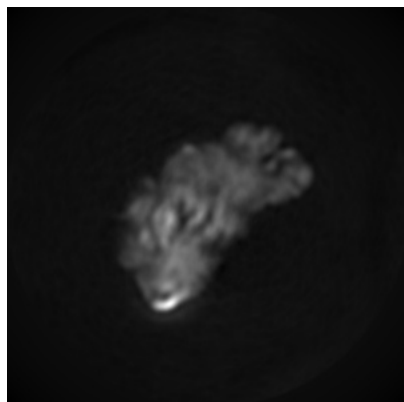


Z Index: 120

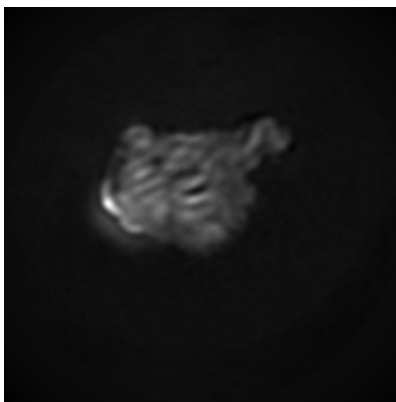
The images above show central slices of the map in three orthogonal directions.

6.3 Largest variance slices [i](#)

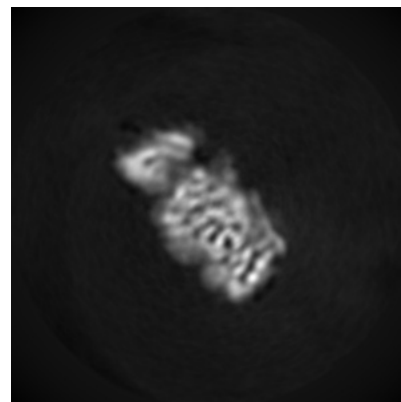
6.3.1 Primary map



X Index: 123

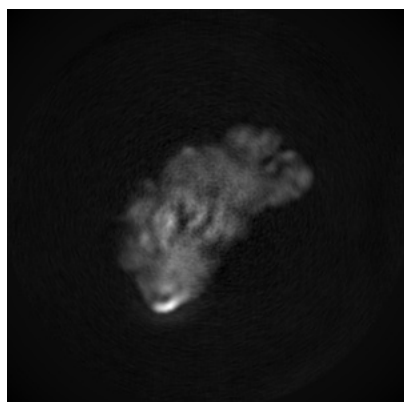


Y Index: 98

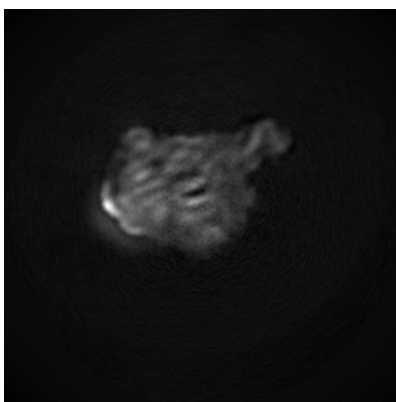


Z Index: 116

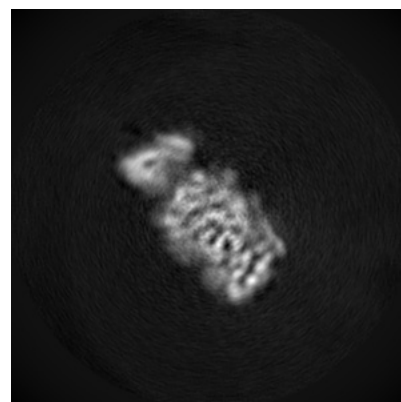
6.3.2 Raw map



X Index: 123



Y Index: 98

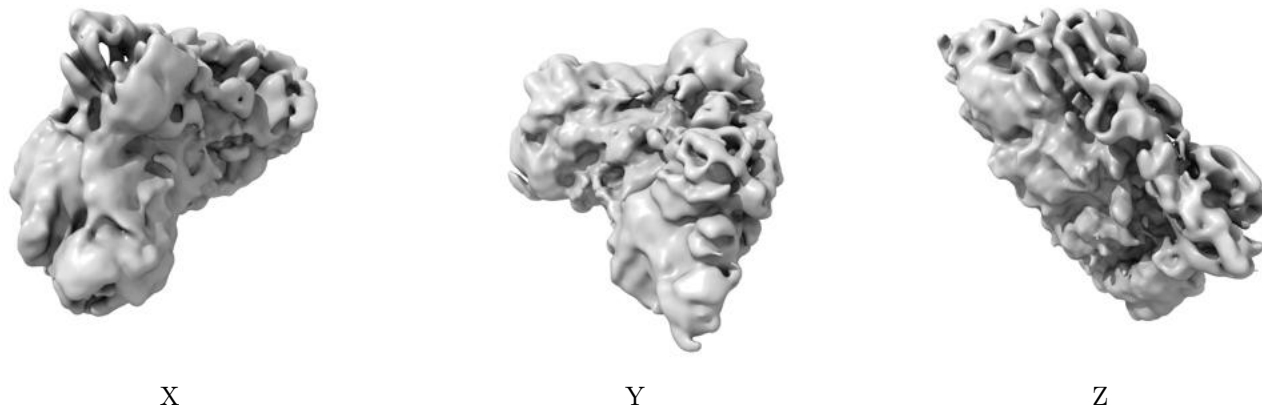


Z Index: 115

The images above show the largest variance slices of the map in three orthogonal directions.

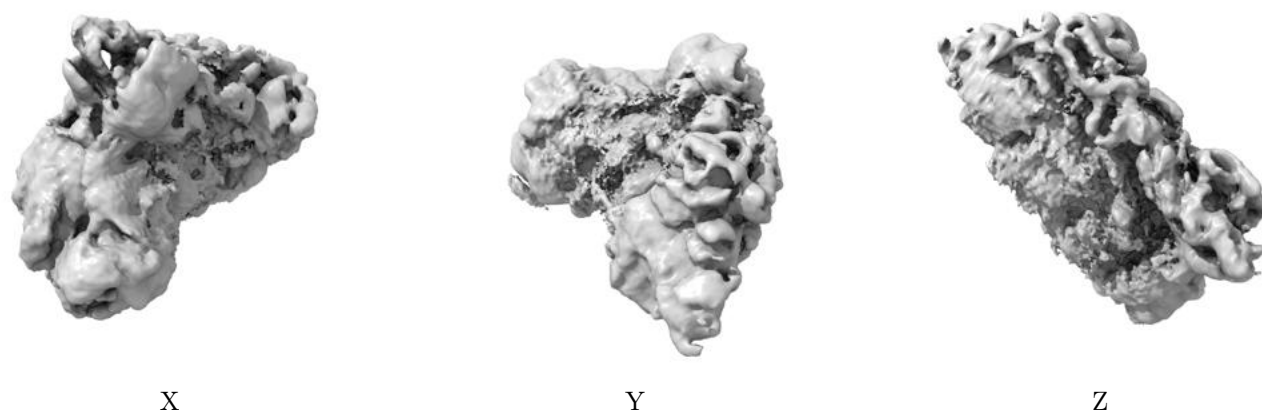
6.4 Orthogonal surface views [i](#)

6.4.1 Primary map



The images above show the 3D surface view of the map at the recommended contour level 0.008. These images, in conjunction with the slice images, may facilitate assessment of whether an appropriate contour level has been provided.

6.4.2 Raw map



These images show the 3D surface of the raw map. The raw map's contour level was selected so that its surface encloses the same volume as the primary map does at its recommended contour level.

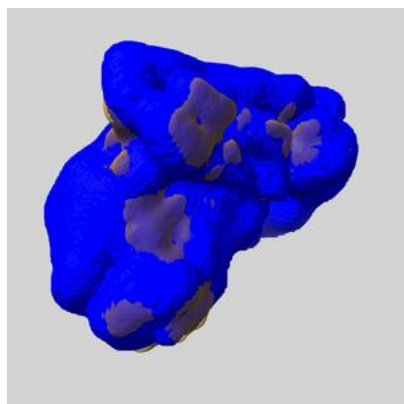
6.5 Mask visualisation [i](#)

This section shows the 3D surface view of the primary map at 50% transparency overlaid with the specified mask at 0% transparency

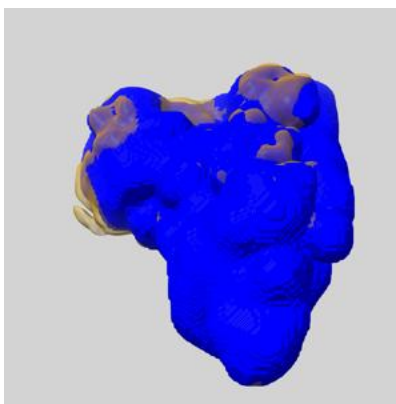
A mask typically either:

- Encompasses the whole structure
- Separates out a domain, a functional unit, a monomer or an area of interest from a larger structure

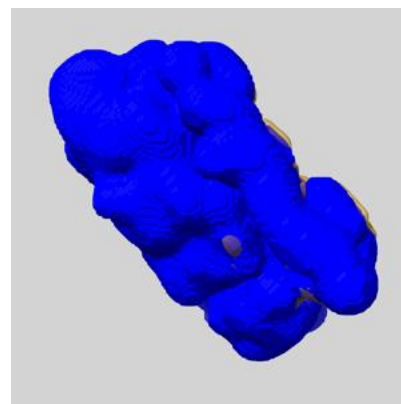
6.5.1 emd_26547_msk_1.map [i](#)



X



Y

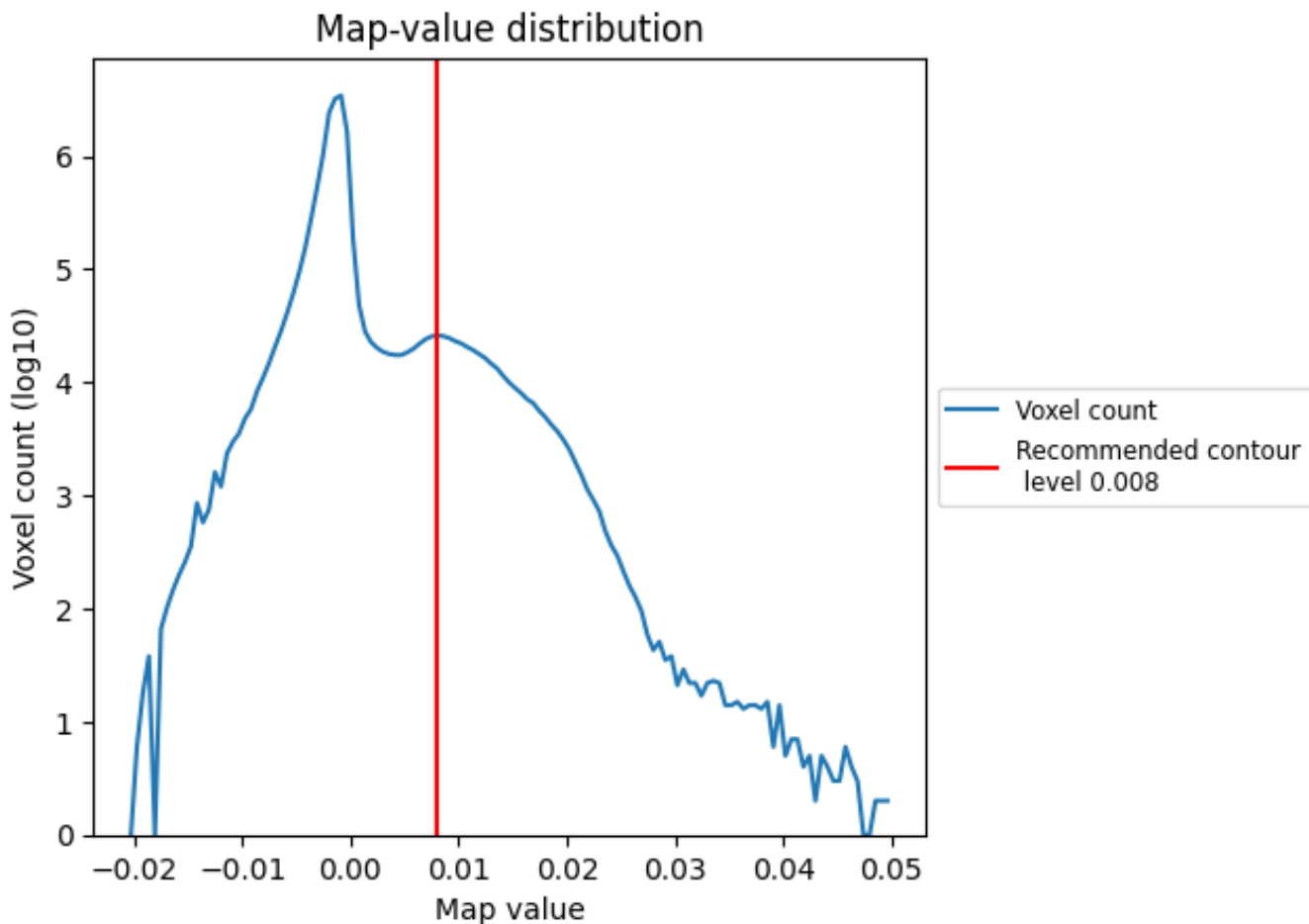


Z

7 Map analysis [i](#)

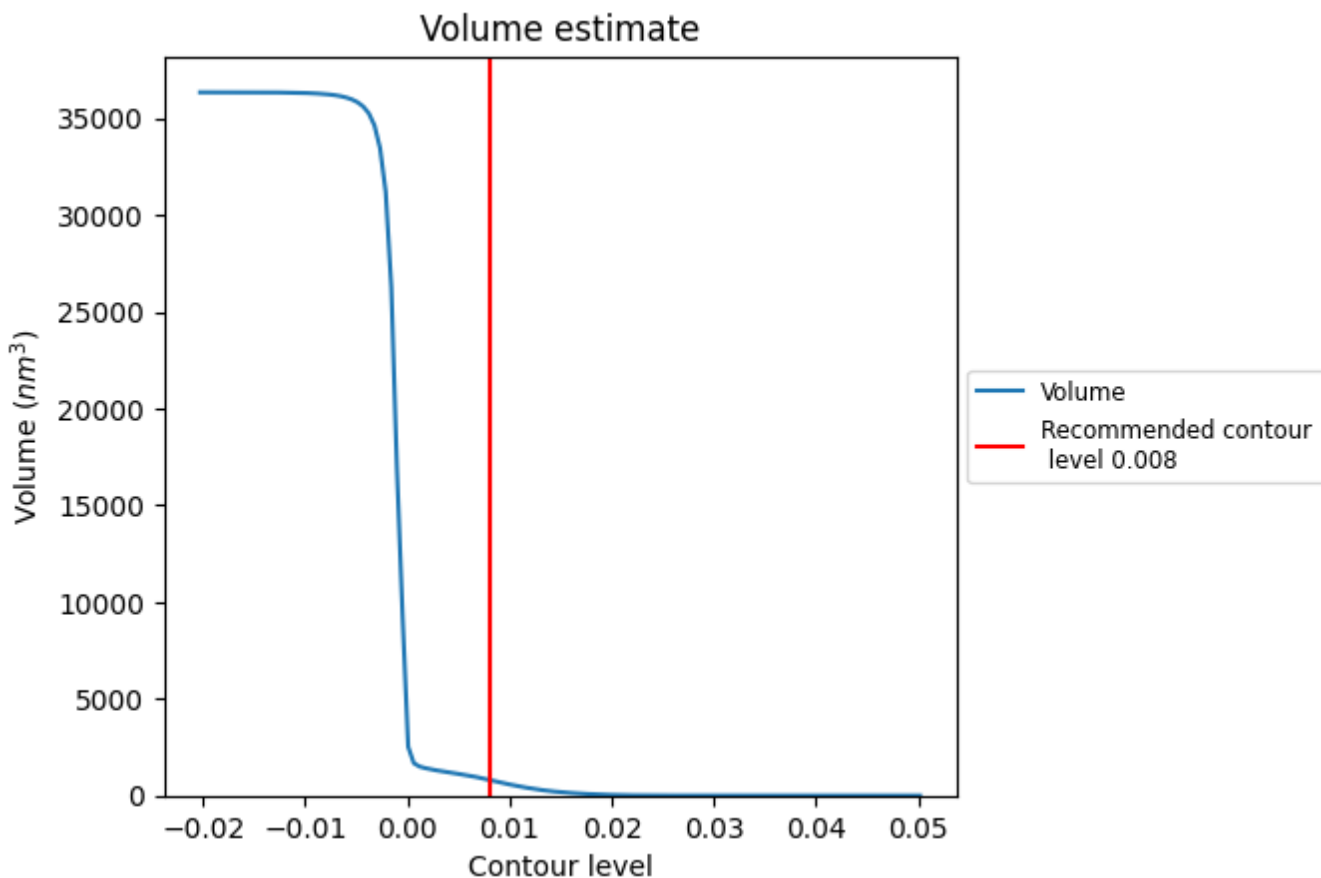
This section contains the results of statistical analysis of the map.

7.1 Map-value distribution [i](#)



The map-value distribution is plotted in 128 intervals along the x-axis. The y-axis is logarithmic. A spike in this graph at zero usually indicates that the volume has been masked.

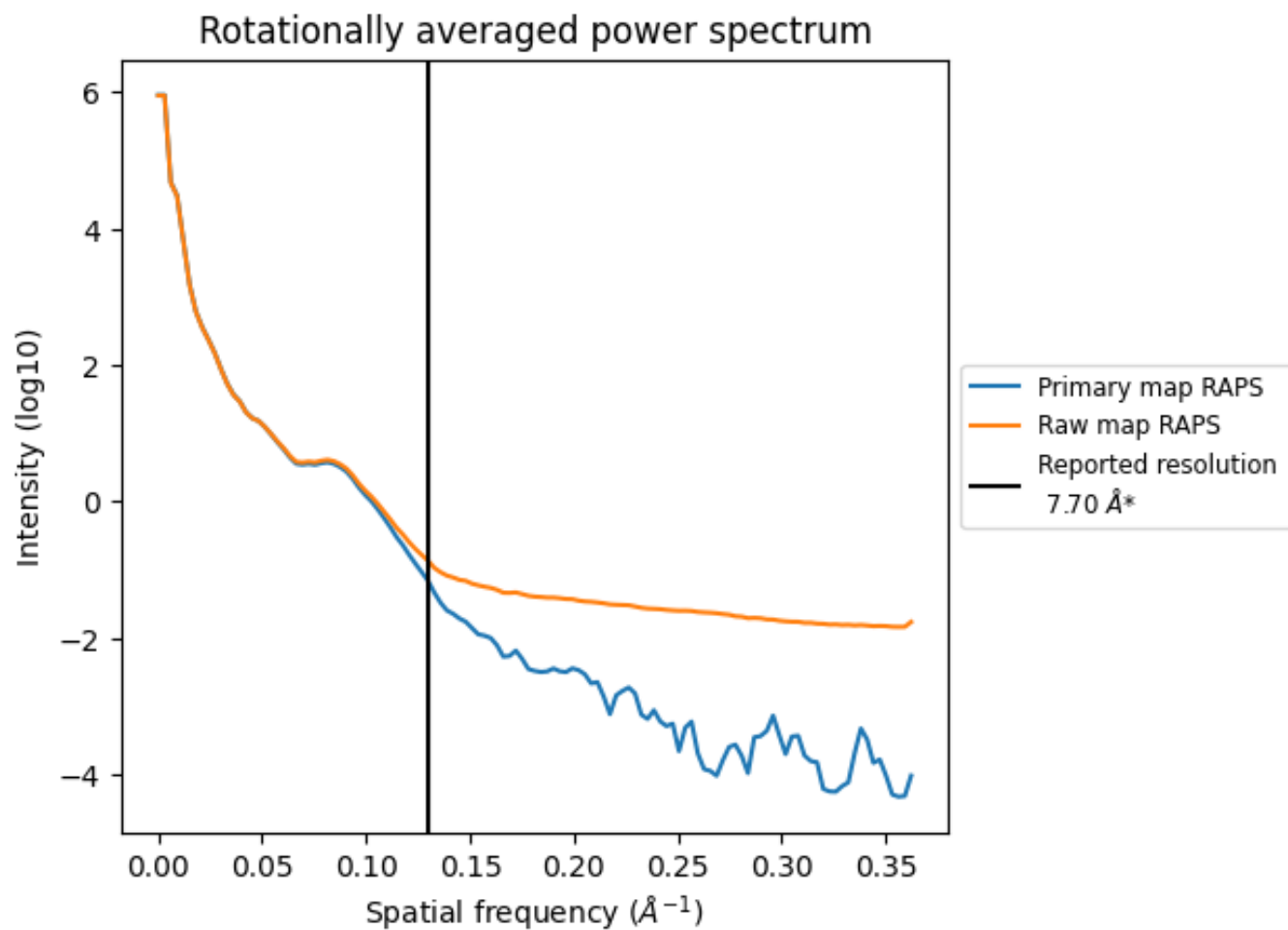
7.2 Volume estimate [i](#)



The volume at the recommended contour level is 812 nm³; this corresponds to an approximate mass of 733 kDa.

The volume estimate graph shows how the enclosed volume varies with the contour level. The recommended contour level is shown as a vertical line and the intersection between the line and the curve gives the volume of the enclosed surface at the given level.

7.3 Rotationally averaged power spectrum i

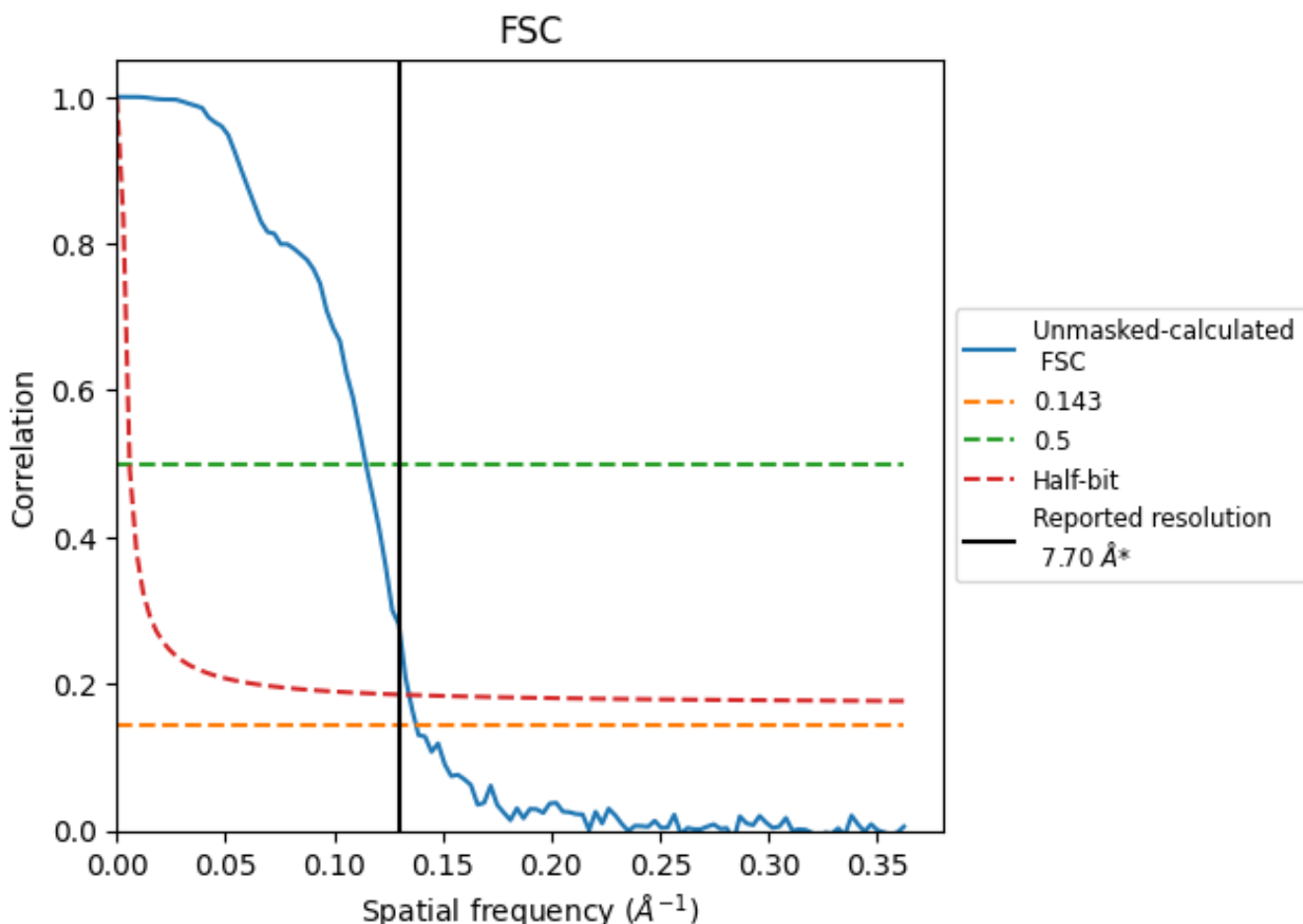


*Reported resolution corresponds to spatial frequency of 0.130 Å⁻¹

8 Fourier-Shell correlation [i](#)

Fourier-Shell Correlation (FSC) is the most commonly used method to estimate the resolution of single-particle and subtomogram-averaged maps. The shape of the curve depends on the imposed symmetry, mask and whether or not the two 3D reconstructions used were processed from a common reference. The reported resolution is shown as a black line. A curve is displayed for the half-bit criterion in addition to lines showing the 0.143 gold standard cut-off and 0.5 cut-off.

8.1 FSC [i](#)



*Reported resolution corresponds to spatial frequency of 0.130 Å⁻¹

8.2 Resolution estimates [i](#)

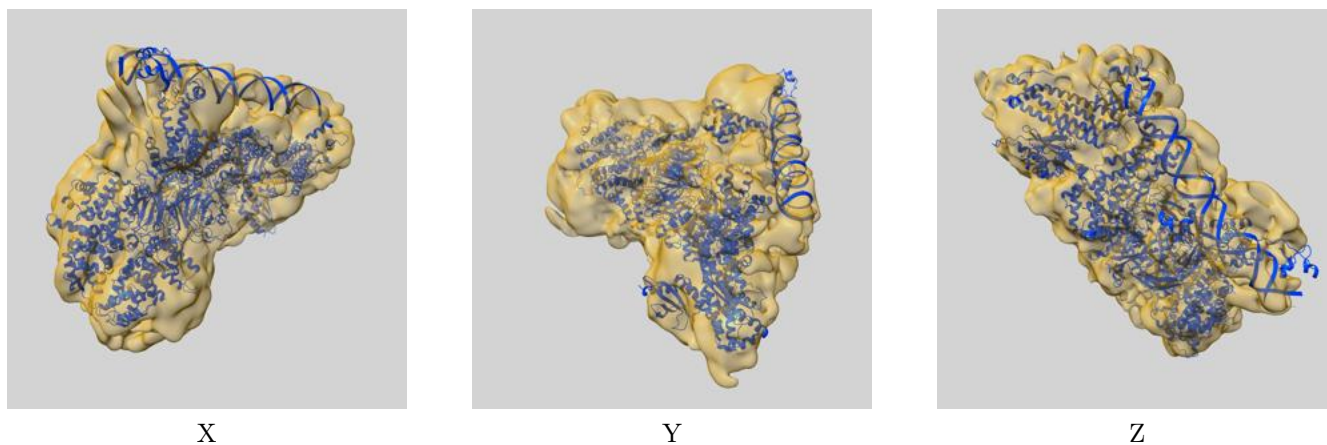
Resolution estimate (Å)	Estimation criterion (FSC cut-off)		
	0.143	0.5	Half-bit
Reported by author	7.70	-	-
Author-provided FSC curve	-	-	-
Unmasked-calculated*	7.26	8.72	7.43

*Resolution estimate based on FSC curve calculated by comparison of deposited half-maps.

9 Map-model fit [i](#)

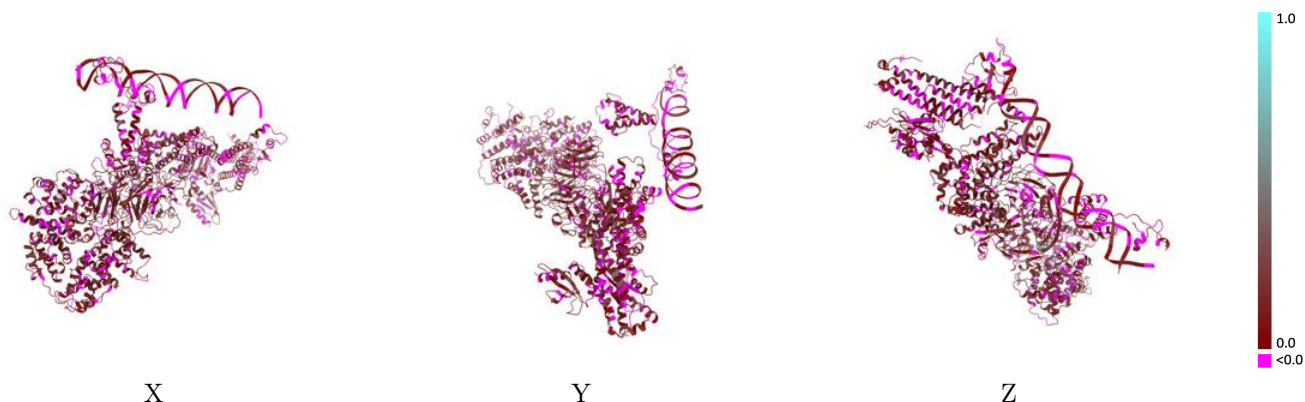
This section contains information regarding the fit between EMDB map EMD-26547 and PDB model 7UIK. Per-residue inclusion information can be found in section 3 on page 6.

9.1 Map-model overlay [i](#)



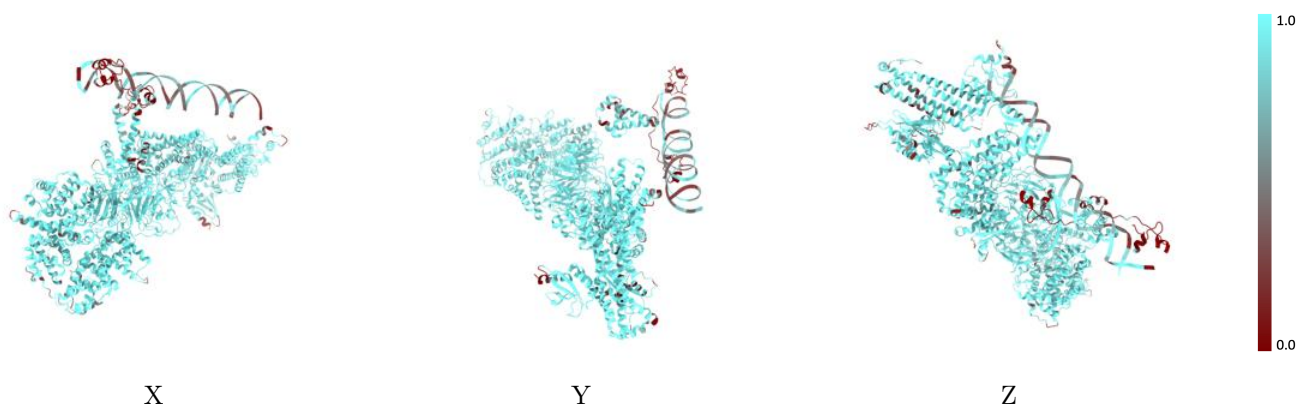
The images above show the 3D surface view of the map at the recommended contour level 0.008 at 50% transparency in yellow overlaid with a ribbon representation of the model coloured in blue. These images allow for the visual assessment of the quality of fit between the atomic model and the map.

9.2 Q-score mapped to coordinate model [i](#)



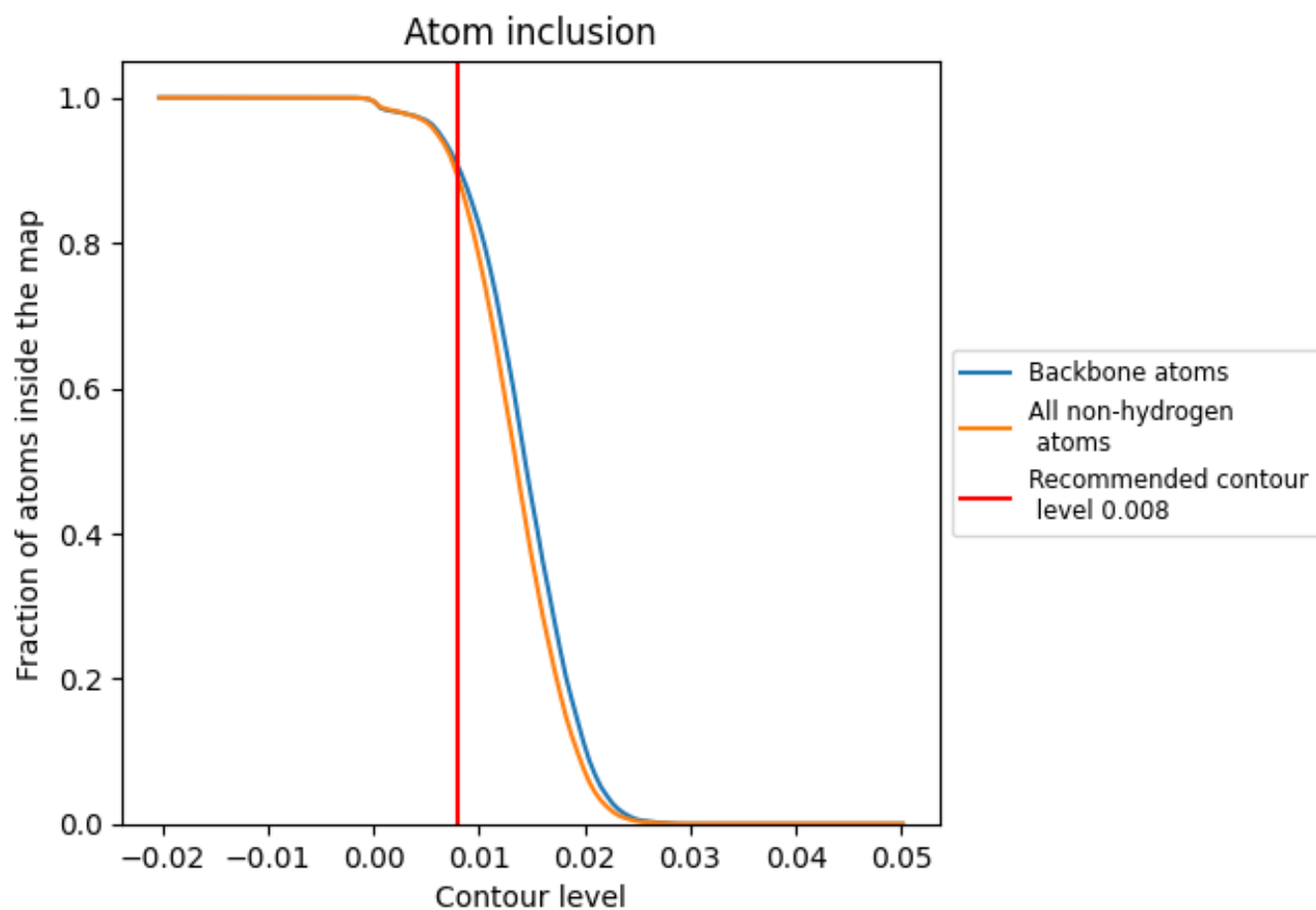
The images above show the model with each residue coloured according to its Q-score. This shows their resolvability in the map with higher Q-score values reflecting better resolvability. Please note: Q-score is calculating the resolvability of atoms, and thus high values are only expected at resolutions at which atoms can be resolved. Low Q-score values may therefore be expected for many entries.

9.3 Atom inclusion mapped to coordinate model [i](#)



The images above show the model with each residue coloured according to its atom inclusion. This shows to what extent they are inside the map at the recommended contour level (0.008).























9.4 Atom inclusion [i](#)



At the recommended contour level, 91% of all backbone atoms, 89% of all non-hydrogen atoms, are inside the map.

9.5 Map-model fit summary

The table lists the average atom inclusion at the recommended contour level (0.008) and Q-score for the entire model and for each chain.

Chain	Atom inclusion	Q-score
All	 0.8911	 0.0910
T	 0.5245	 0.0360
U	 0.4614	 -0.0080
X	 0.6305	 0.0630
Y	 0.5756	 0.0510
b	 0.9339	 0.0430
c	 0.9088	 0.0890
e	 0.9560	 0.1090
n	 0.8837	 0.0600
o	 0.9168	 0.0310
p	 0.9730	 0.1170

