



Full wwPDB X-ray Structure Validation Report ⓘ

Sep 24, 2023 – 12:51 PM EDT

PDB ID : 5UJB
Title : Structure of a Mcl-1 Inhibitor Binding to Site 3 of Human Serum Albumin
Authors : Zhao, B.
Deposited on : 2017-01-17
Resolution : 2.70 Å(reported)

This is a Full wwPDB X-ray Structure Validation Report for a publicly released PDB entry.

We welcome your comments at validation@mail.wwpdb.org

A user guide is available at

<https://www.wwpdb.org/validation/2017/XrayValidationReportHelp>

with specific help available everywhere you see the ⓘ symbol.

The types of validation reports are described at

<http://www.wwpdb.org/validation/2017/FAQs#types>.

The following versions of software and data (see [references ⓘ](#)) were used in the production of this report:

MolProbity : 4.02b-467
Mogul : 1.8.5 (274361), CSD as541be (2020)
Xtriage (Phenix) : 1.13
EDS : 2.35.1
buster-report : 1.1.7 (2018)
Percentile statistics : 20191225.v01 (using entries in the PDB archive December 25th 2019)
Refmac : 5.8.0158
CCP4 : 7.0.044 (Gargrove)
Ideal geometry (proteins) : Engh & Huber (2001)
Ideal geometry (DNA, RNA) : Parkinson et al. (1996)
Validation Pipeline (wwPDB-VP) : 2.35.1

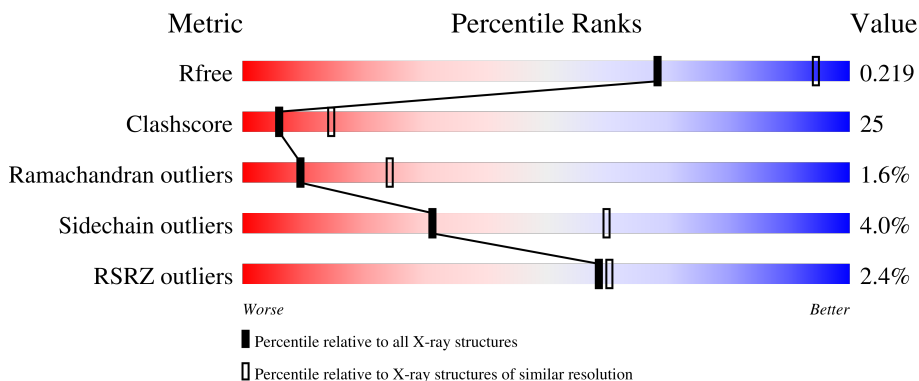
1 Overall quality at a glance

The following experimental techniques were used to determine the structure:

X-RAY DIFFRACTION

The reported resolution of this entry is 2.70 Å.

Percentile scores (ranging between 0-100) for global validation metrics of the entry are shown in the following graphic. The table shows the number of entries on which the scores are based.



Metric	Whole archive (#Entries)	Similar resolution (#Entries, resolution range(Å))
R_{free}	130704	2808 (2.70-2.70)
Clashscore	141614	3122 (2.70-2.70)
Ramachandran outliers	138981	3069 (2.70-2.70)
Sidechain outliers	138945	3069 (2.70-2.70)
RSRZ outliers	127900	2737 (2.70-2.70)

The table below summarises the geometric issues observed across the polymeric chains and their fit to the electron density. The red, orange, yellow and green segments of the lower bar indicate the fraction of residues that contain outliers for ≥ 3 , 2, 1 and 0 types of geometric quality criteria respectively. A grey segment represents the fraction of residues that are not modelled. The numeric value for each fraction is indicated below the corresponding segment, with a dot representing fractions $\leq 5\%$. The upper red bar (where present) indicates the fraction of residues that have poor fit to the electron density. The numeric value is given above the bar.

Mol	Chain	Length	Quality of chain
1	A	609	 2% 54% 36% 7%
1	B	609	 2% 52% 38% 7%

2 Entry composition i

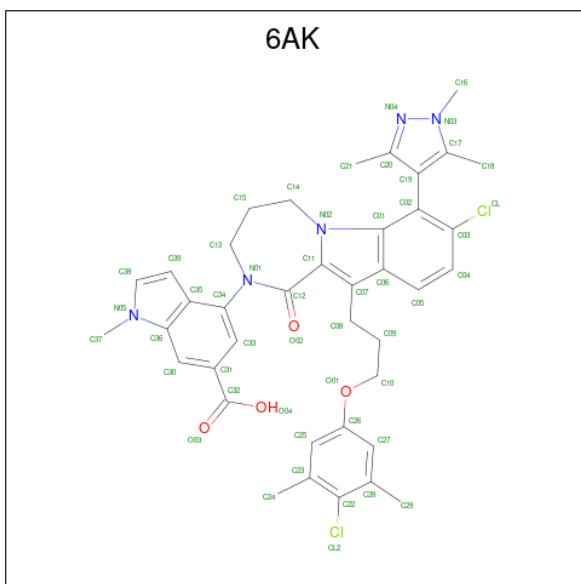
There are 3 unique types of molecules in this entry. The entry contains 8812 atoms, of which 0 are hydrogens and 0 are deuteriums.

In the tables below, the ZeroOcc column contains the number of atoms modelled with zero occupancy, the AltConf column contains the number of residues with at least one atom in alternate conformation and the Trace column contains the number of residues modelled with at most 2 atoms.

- Molecule 1 is a protein called Serum albumin.

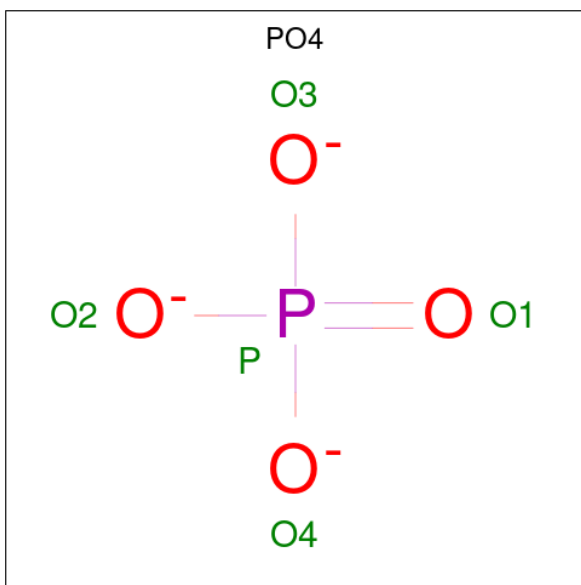
Mol	Chain	Residues	Atoms					ZeroOcc	AltConf	Trace
			Total	C	N	O	S			
1	A	568	Total 4364	C 2760	N 736	O 828	S 40	0	0	0
1	B	565	Total 4338	C 2749	N 722	O 826	S 41	0	0	0

- Molecule 2 is 4-{8-chloro-11-[3-(4-chloro-3,5-dimethylphenoxy)propyl]-1-oxo-7-(1,3,5-trimethyl-1H-pyrazol-4-yl)-4,5-dihydro-1H-[1,4]diazepino[1,2-a]indol-2(3H)-yl}-1-methyl-1H-indole-6-carboxylic acid (three-letter code: 6AK) (formula: C₃₉H₃₉Cl₂N₅O₄).



Mol	Chain	Residues	Atoms				ZeroOcc	AltConf	
			Total	C	Cl	N			O
2	A	1	Total 50	C 39	Cl 2	N 5	O 4	0	0
2	B	1	Total 50	C 39	Cl 2	N 5	O 4	0	0

- Molecule 3 is PHOSPHATE ION (three-letter code: PO4) (formula: O₄P).

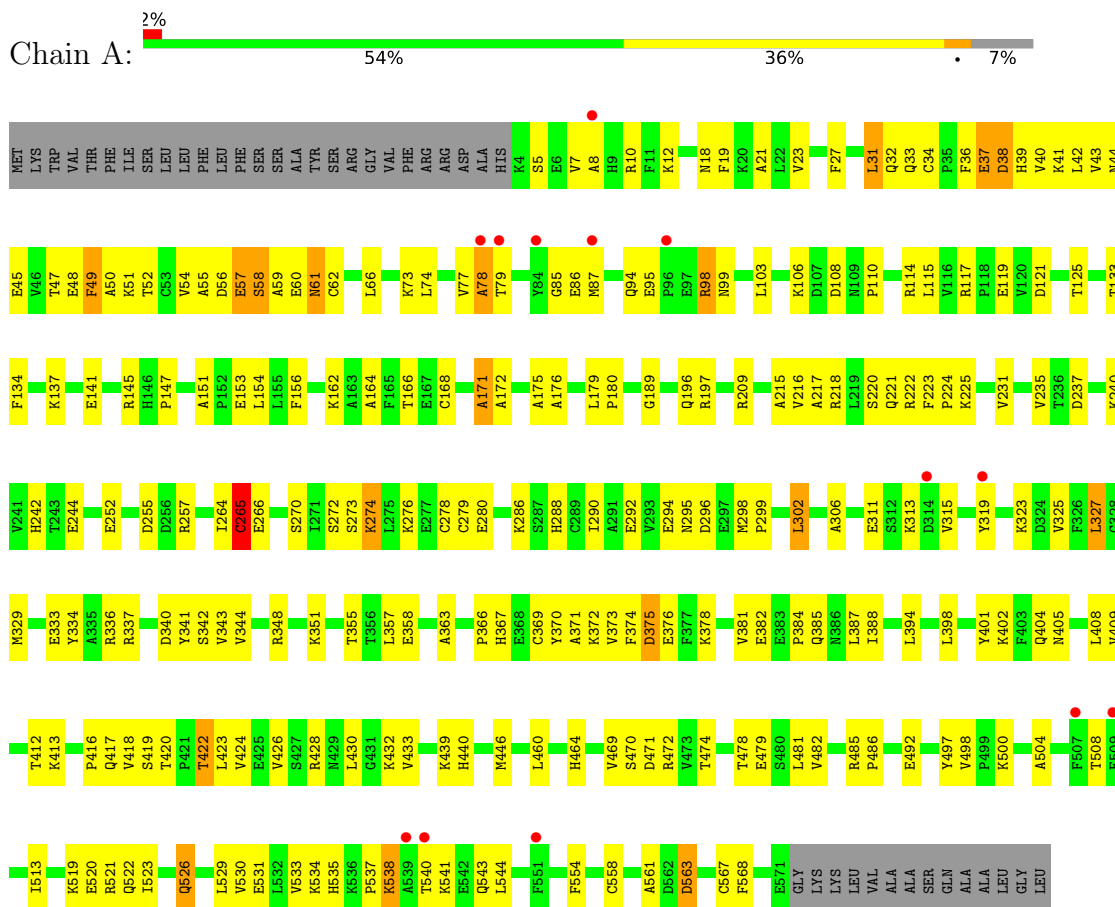


Mol	Chain	Residues	Atoms			ZeroOcc	AltConf
3	A	1	Total	O	P	0	0
			5	4	1		
3	B	1	Total	O	P	0	0
			5	4	1		

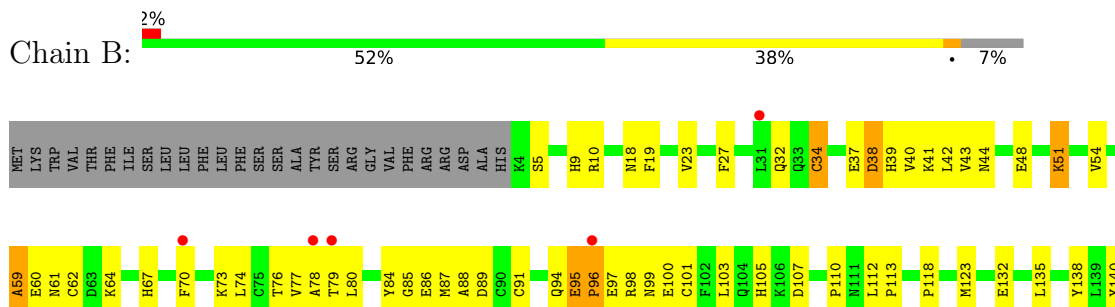
3 Residue-property plots i

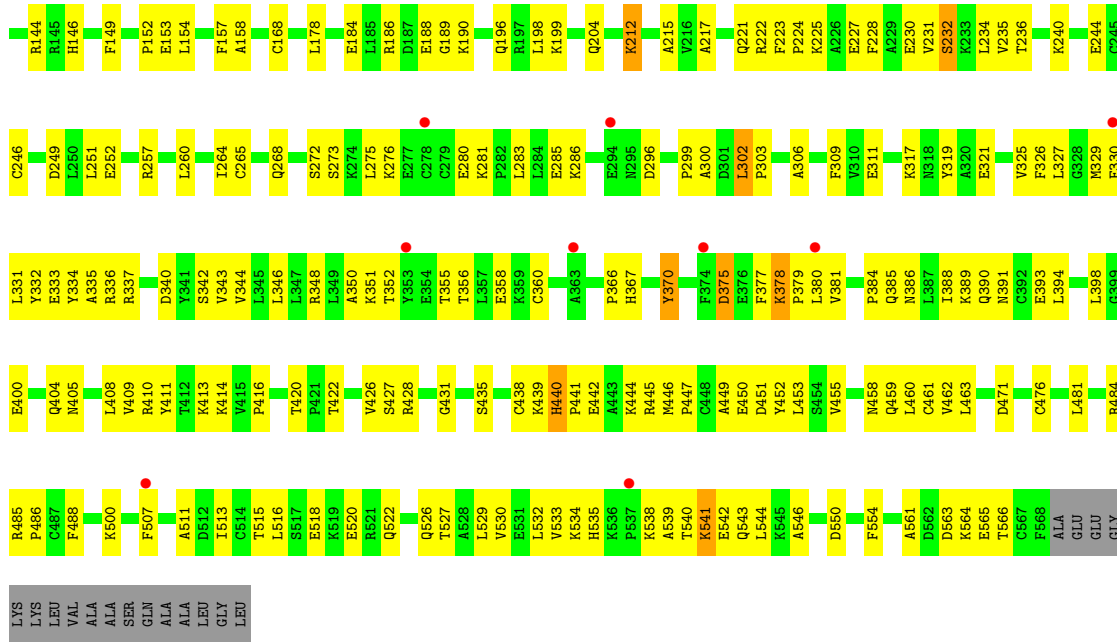
These plots are drawn for all protein, RNA, DNA and oligosaccharide chains in the entry. The first graphic for a chain summarises the proportions of the various outlier classes displayed in the second graphic. The second graphic shows the sequence view annotated by issues in geometry and electron density. Residues are color-coded according to the number of geometric quality criteria for which they contain at least one outlier: green = 0, yellow = 1, orange = 2 and red = 3 or more. A red dot above a residue indicates a poor fit to the electron density ($RSRZ > 2$). Stretches of 2 or more consecutive residues without any outlier are shown as a green connector. Residues present in the sample, but not in the model, are shown in grey.

- Molecule 1: Serum albumin



- Molecule 1: Serum albumin





4 Data and refinement statistics i

Property	Value	Source
Space group	P 1 21 1	Depositor
Cell constants a, b, c, α , β , γ	58.84Å 182.34Å 58.92Å 90.00° 105.15° 90.00°	Depositor
Resolution (Å)	28.76 – 2.70 48.26 – 2.70	Depositor EDS
% Data completeness (in resolution range)	92.9 (28.76-2.70) 92.4 (48.26-2.70)	Depositor EDS
R_{merge}	0.09	Depositor
R_{sym}	0.07	Depositor
$\langle I/\sigma(I) \rangle$ ¹	2.17 (at 2.69Å)	Xtrriage
Refinement program	PHENIX (1.10_2155: ???)	Depositor
R, R_{free}	0.174 , 0.215 0.186 , 0.219	Depositor DCC
R_{free} test set	2003 reflections (6.55%)	wwPDB-VP
Wilson B-factor (Å ²)	51.0	Xtrriage
Anisotropy	0.232	Xtrriage
Bulk solvent k_{sol} (e/Å ³), B_{sol} (Å ²)	0.29 , 50.4	EDS
L-test for twinning ²	$\langle L \rangle = 0.42$, $\langle L^2 \rangle = 0.25$	Xtrriage
Estimated twinning fraction	0.299 for l,-k,h	Xtrriage
F_o, F_c correlation	0.95	EDS
Total number of atoms	8812	wwPDB-VP
Average B, all atoms (Å ²)	70.0	wwPDB-VP

Xtrriage's analysis on translational NCS is as follows: *The largest off-origin peak in the Patterson function is 5.39% of the height of the origin peak. No significant pseudotranslation is detected.*

¹Intensities estimated from amplitudes.

²Theoretical values of $\langle |L| \rangle$, $\langle L^2 \rangle$ for acentric reflections are 0.5, 0.333 respectively for untwinned datasets, and 0.375, 0.2 for perfectly twinned datasets.

5 Model quality [i](#)

5.1 Standard geometry [i](#)

Bond lengths and bond angles in the following residue types are not validated in this section: PO4, 6AK

The Z score for a bond length (or angle) is the number of standard deviations the observed value is removed from the expected value. A bond length (or angle) with $|Z| > 5$ is considered an outlier worth inspection. RMSZ is the root-mean-square of all Z scores of the bond lengths (or angles).

Mol	Chain	Bond lengths		Bond angles	
		RMSZ	# Z >5	RMSZ	# Z >5
1	A	0.56	0/4448	0.80	3/6024 (0.0%)
1	B	0.57	1/4425 (0.0%)	0.78	1/6001 (0.0%)
All	All	0.56	1/8873 (0.0%)	0.79	4/12025 (0.0%)

All (1) bond length outliers are listed below:

Mol	Chain	Res	Type	Atoms	Z	Observed(Å)	Ideal(Å)
1	B	476	CYS	CB-SG	5.09	1.90	1.82

All (4) bond angle outliers are listed below:

Mol	Chain	Res	Type	Atoms	Z	Observed(°)	Ideal(°)
1	A	66	LEU	CA-CB-CG	6.53	130.31	115.30
1	A	567	CYS	CA-CB-SG	6.33	125.40	114.00
1	A	327	LEU	CB-CG-CD2	-5.68	101.34	111.00
1	B	375	ASP	C-N-CA	-5.14	108.86	121.70

There are no chirality outliers.

There are no planarity outliers.

5.2 Too-close contacts [i](#)

In the following table, the Non-H and H(model) columns list the number of non-hydrogen atoms and hydrogen atoms in the chain respectively. The H(added) column lists the number of hydrogen atoms added and optimized by MolProbity. The Clashes column lists the number of clashes within the asymmetric unit, whereas Symm-Clashes lists symmetry-related clashes.

Mol	Chain	Non-H	H(model)	H(added)	Clashes	Symm-Clashes
1	A	4364	0	4111	215	0

Continued on next page...

Continued from previous page...

Mol	Chain	Non-H	H(model)	H(added)	Clashes	Symm-Clashes
1	B	4338	0	4082	208	0
2	A	50	0	0	4	0
2	B	50	0	0	4	0
3	A	5	0	0	1	0
3	B	5	0	0	0	0
All	All	8812	0	8193	421	0

The all-atom clashscore is defined as the number of clashes found per 1000 atoms (including hydrogen atoms). The all-atom clashscore for this structure is 25.

All (421) close contacts within the same asymmetric unit are listed below, sorted by their clash magnitude.

Atom-1	Atom-2	Interatomic distance (Å)	Clash overlap (Å)
1:A:59:ALA:HB3	1:A:62:CYS:SG	1.46	1.55
1:A:302:LEU:HD12	1:A:337:ARG:NH1	1.27	1.48
1:A:302:LEU:CD1	1:A:337:ARG:HH12	1.38	1.35
1:A:59:ALA:CB	1:A:62:CYS:SG	2.20	1.28
1:A:265:CYS:SG	1:A:279:CYS:SG	1.45	1.23
1:A:265:CYS:SG	1:A:279:CYS:CB	2.39	1.10
1:A:540:THR:HB	1:A:544:LEU:HD11	1.37	1.01
1:A:302:LEU:CD1	1:A:337:ARG:NH1	2.10	0.97
1:B:408:LEU:HD23	1:B:427:SER:CB	1.94	0.97
1:A:57:GLU:O	1:A:59:ALA:N	1.98	0.96
1:B:438:CYS:O	1:B:440:HIS:N	2.02	0.92
1:B:408:LEU:HD23	1:B:427:SER:HB3	1.49	0.91
1:B:51:LYS:HA	1:B:54:VAL:HG12	1.54	0.89
1:B:95:GLU:O	1:B:97:GLU:N	2.08	0.86
1:A:302:LEU:HD12	1:A:337:ARG:CZ	2.06	0.86
1:A:540:THR:CB	1:A:544:LEU:HD11	2.04	0.86
1:A:274:LYS:NZ	1:A:294:GLU:OE1	2.11	0.84
1:A:367:HIS:HA	1:A:370:TYR:CE1	2.13	0.84
1:A:412:THR:HG22	1:A:423:LEU:HD13	1.58	0.84
1:A:319:TYR:OH	1:A:358:GLU:OE1	1.97	0.82
1:A:42:LEU:HD22	1:A:73:LYS:HG3	1.59	0.81
1:B:204:GLN:NE2	1:B:246:CYS:HB3	1.95	0.81
1:A:216:VAL:O	1:A:220:SER:OG	1.98	0.81
1:A:531:GLU:O	1:A:535:HIS:ND1	2.13	0.81
1:B:377:PHE:O	1:B:380:LEU:HB2	1.81	0.81
1:B:96:PRO:O	1:B:97:GLU:HG3	1.82	0.80
1:A:114:ARG:H	1:A:114:ARG:HD2	1.44	0.80
1:B:408:LEU:CD2	1:B:427:SER:HB2	2.12	0.80

Continued on next page...

Continued from previous page...

Atom-1	Atom-2	Interatomic distance (Å)	Clash overlap (Å)
1:B:80:LEU:N	1:B:84:TYR:OH	2.15	0.79
1:B:228:PHE:O	1:B:232:SER:OG	1.99	0.79
1:A:540:THR:CA	1:A:544:LEU:HD11	2.14	0.78
1:B:408:LEU:CD2	1:B:427:SER:CB	2.62	0.78
1:B:414:LYS:NZ	1:B:488:PHE:O	2.17	0.77
1:B:67:HIS:CD2	1:B:99:ASN:HD22	2.02	0.77
1:B:408:LEU:HD11	1:B:526:GLN:HB3	1.66	0.77
1:B:204:GLN:HE22	1:B:246:CYS:HB3	1.49	0.76
1:B:34:CYS:HB3	1:B:39:HIS:CE1	2.21	0.75
1:B:300:ALA:O	1:B:302:LEU:HD12	1.86	0.75
1:B:152:PRO:HB2	1:B:257:ARG:HH11	1.52	0.74
1:A:10:ARG:NH1	1:A:255:ASP:OD2	2.21	0.74
1:A:162:LYS:O	1:A:166:THR:HG23	1.88	0.74
1:B:67:HIS:NE2	1:B:249:ASP:OD1	2.22	0.72
1:A:540:THR:HA	1:A:544:LEU:CD1	2.19	0.72
1:B:408:LEU:CD1	1:B:526:GLN:HB3	2.20	0.72
1:B:67:HIS:CG	1:B:99:ASN:ND2	2.58	0.71
1:A:323:LYS:O	1:A:327:LEU:HD12	1.90	0.71
1:A:432:LYS:NZ	3:A:801:PO4:O2	2.20	0.71
1:A:513:ILE:O	1:A:521:ARG:NH1	2.23	0.71
1:A:40:VAL:O	1:A:44:ASN:ND2	2.22	0.71
1:B:352:THR:O	1:B:355:THR:OG1	2.09	0.71
1:A:222:ARG:HG2	1:A:223:PHE:CE1	2.26	0.71
1:B:306:ALA:O	1:B:311:GLU:HG3	1.90	0.71
1:A:59:ALA:HB2	1:A:62:CYS:SG	2.26	0.70
1:B:260:LEU:O	1:B:264:ILE:HG13	1.90	0.70
1:B:352:THR:HG21	1:B:380:LEU:HD11	1.71	0.70
1:A:344:VAL:HG22	1:A:348:ARG:HH12	1.56	0.70
1:A:302:LEU:HB3	1:A:337:ARG:NH1	2.07	0.70
1:A:36:PHE:O	1:A:40:VAL:HG23	1.92	0.70
1:B:224:PRO:HD2	1:B:296:ASP:HB3	1.73	0.70
1:B:232:SER:O	1:B:236:THR:OG1	2.10	0.69
1:B:231:VAL:O	1:B:235:VAL:HG12	1.91	0.69
1:B:32:GLN:HE22	1:B:107:ASP:H	1.39	0.69
1:B:317:LYS:O	1:B:321:GLU:HB2	1.91	0.69
1:A:98:ARG:HG3	1:A:99:ASN:N	2.08	0.68
1:A:540:THR:HA	1:A:544:LEU:HD11	1.73	0.68
1:A:77:VAL:O	1:A:79:THR:N	2.26	0.68
1:A:216:VAL:HG12	1:A:235:VAL:HG21	1.75	0.68
1:A:439:LYS:HE2	1:A:440:HIS:CE1	2.29	0.68
1:A:114:ARG:HD2	1:A:114:ARG:N	2.09	0.67

Continued on next page...

Continued from previous page...

Atom-1	Atom-2	Interatomic distance (Å)	Clash overlap (Å)
1:A:474:THR:O	1:A:478:THR:HG23	1.93	0.67
1:B:342:SER:O	1:B:346:LEU:HD12	1.93	0.67
1:B:386:ASN:OD1	1:B:390:GLN:NE2	2.28	0.67
1:B:461:CYS:SG	1:B:484:ARG:NH1	2.67	0.67
1:A:439:LYS:HE2	1:A:440:HIS:NE2	2.10	0.66
1:B:539:ALA:HB1	1:B:543:GLN:HE21	1.61	0.66
1:A:540:THR:CA	1:A:544:LEU:CD1	2.74	0.66
1:A:272:SER:OG	1:A:273:SER:N	2.27	0.66
1:B:522:GLN:O	1:B:526:GLN:HG3	1.96	0.66
1:B:283:LEU:HA	1:B:286:LYS:HB2	1.78	0.65
1:B:273:SER:OG	1:B:296:ASP:OD1	2.14	0.65
1:A:366:PRO:CB	1:A:370:TYR:CE2	2.80	0.65
1:A:313:LYS:NZ	1:A:367:HIS:H	1.95	0.64
1:A:561:ALA:C	1:A:563:ASP:H	2.00	0.64
1:A:59:ALA:O	1:A:60:GLU:HB3	1.97	0.64
1:A:215:ALA:HB3	1:A:235:VAL:HG13	1.79	0.64
1:B:138:TYR:HA	2:B:802:6AK:C04	2.27	0.64
1:B:538:LYS:O	1:B:540:THR:OG1	2.13	0.64
1:A:252:GLU:OE1	1:A:252:GLU:N	2.30	0.64
1:A:409:VAL:O	1:A:413:LYS:HG3	1.98	0.63
1:A:408:LEU:O	1:A:412:THR:HG23	1.98	0.63
1:B:481:LEU:O	1:B:484:ARG:HG3	1.97	0.63
1:B:198:LEU:HD22	1:B:455:VAL:HG12	1.80	0.62
1:A:48:GLU:O	1:A:52:THR:HG23	2.00	0.62
1:B:409:VAL:O	1:B:413:LYS:HG3	2.00	0.61
1:A:41:LYS:O	1:A:45:GLU:HG3	2.00	0.61
1:A:428:ARG:HD2	1:A:526:GLN:NE2	2.15	0.61
1:A:344:VAL:HG22	1:A:348:ARG:NH1	2.16	0.61
1:B:416:PRO:O	1:B:534:LYS:HE2	2.00	0.60
1:A:37:GLU:CD	1:A:37:GLU:H	2.04	0.60
1:A:302:LEU:HD13	1:A:337:ARG:HH12	1.57	0.60
1:B:110:PRO:HB2	1:B:112:LEU:HG	1.82	0.60
1:A:333:GLU:O	1:A:336:ARG:HG2	2.02	0.60
1:A:464:HIS:HE1	1:A:470:SER:H	1.47	0.60
1:B:240:LYS:O	1:B:244:GLU:HG2	2.02	0.59
1:A:133:THR:O	1:A:137:LYS:HG2	2.01	0.59
1:B:39:HIS:O	1:B:43:VAL:HG23	2.02	0.59
1:B:67:HIS:CG	1:B:99:ASN:HD22	2.20	0.59
1:A:172:ALA:N	1:B:515:THR:O	2.36	0.59
1:A:50:ALA:O	1:A:54:VAL:HG23	2.02	0.58
1:B:61:ASN:HB3	1:B:64:LYS:HG3	1.85	0.58

Continued on next page...

Continued from previous page...

Atom-1	Atom-2	Interatomic distance (Å)	Clash overlap (Å)
1:A:85:GLY:C	1:A:87:MET:H	2.07	0.58
1:A:95:GLU:HA	1:A:98:ARG:HG2	1.84	0.58
1:A:240:LYS:O	1:A:244:GLU:HG2	2.03	0.58
1:B:449:ALA:O	1:B:453:LEU:HD12	2.03	0.58
1:A:49:PHE:HZ	1:A:61:ASN:HB3	1.68	0.58
1:A:366:PRO:HB3	1:A:370:TYR:CE2	2.39	0.58
1:A:422:THR:O	1:A:426:VAL:HG23	2.03	0.58
1:A:224:PRO:HB2	1:A:299:PRO:HD3	1.85	0.58
1:A:313:LYS:HZ2	1:A:367:HIS:H	1.51	0.58
1:B:225:LYS:HG2	1:B:299:PRO:HG3	1.84	0.58
1:A:19:PHE:O	1:A:23:VAL:HG23	2.03	0.58
1:A:38:ASP:N	1:A:38:ASP:OD1	2.37	0.58
1:A:265:CYS:SG	1:A:279:CYS:CA	2.91	0.58
1:B:272:SER:HA	1:B:296:ASP:OD2	2.04	0.58
1:A:225:LYS:HG2	1:A:299:PRO:HG3	1.86	0.57
1:B:5:SER:HB2	1:B:62:CYS:HB3	1.86	0.57
1:B:232:SER:HA	1:B:235:VAL:CG1	2.34	0.57
1:B:394:LEU:HD13	1:B:398:LEU:HD12	1.86	0.57
1:B:225:LYS:NZ	1:B:296:ASP:OD2	2.38	0.57
1:A:378:LYS:O	1:A:382:GLU:HG3	2.05	0.57
1:A:504:ALA:O	1:A:508:THR:HG23	2.04	0.57
1:A:302:LEU:HB3	1:A:337:ARG:HH12	1.68	0.57
1:B:222:ARG:HG2	1:B:223:PHE:CE1	2.39	0.57
1:A:31:LEU:HD11	1:A:78:ALA:HB2	1.86	0.56
1:A:366:PRO:HB3	1:A:370:TYR:HE2	1.70	0.56
1:A:224:PRO:HD2	1:A:296:ASP:HB3	1.87	0.56
1:B:386:ASN:O	1:B:390:GLN:HG3	2.05	0.56
1:A:39:HIS:O	1:A:43:VAL:HG23	2.04	0.56
1:B:404:GLN:HG3	1:B:431:GLY:HA3	1.87	0.56
1:A:115:LEU:HG	2:A:800:6AK:C21	2.35	0.56
1:A:121:ASP:O	1:A:125:THR:HG23	2.05	0.56
1:A:264:ILE:C	1:A:266:GLU:H	2.09	0.55
1:B:539:ALA:HB1	1:B:543:GLN:NE2	2.20	0.55
1:B:543:GLN:OE1	1:B:543:GLN:N	2.28	0.55
1:B:132:GLU:OE2	1:B:132:GLU:N	2.39	0.55
1:A:265:CYS:CB	1:A:279:CYS:SG	2.84	0.55
1:A:302:LEU:CG	1:A:337:ARG:HH12	2.14	0.55
1:A:196:GLN:HE22	1:A:242:HIS:HD2	1.55	0.55
1:A:398:LEU:HB3	1:A:402:LYS:HB2	1.88	0.55
1:B:346:LEU:HD12	1:B:346:LEU:H	1.71	0.55
1:A:541:LYS:N	1:A:543:GLN:OE1	2.35	0.55

Continued on next page...

Continued from previous page...

Atom-1	Atom-2	Interatomic distance (Å)	Clash overlap (Å)
1:A:8:ALA:O	1:A:12:LYS:HG3	2.07	0.55
1:A:302:LEU:HD11	1:A:336:ARG:NH1	2.23	0.55
1:B:9:HIS:CE1	1:B:10:ARG:NH1	2.75	0.54
1:B:367:HIS:HA	1:B:370:TYR:CZ	2.42	0.54
1:B:422:THR:O	1:B:426:VAL:HG23	2.07	0.54
1:B:367:HIS:HA	1:B:370:TYR:CE1	2.42	0.54
1:B:485:ARG:HB3	1:B:486:PRO:HD3	1.89	0.54
1:A:561:ALA:O	1:A:563:ASP:N	2.39	0.54
1:B:88:ALA:O	1:B:91:CYS:HB2	2.08	0.54
1:A:141:GLU:O	1:A:145:ARG:HG3	2.07	0.54
1:A:497:TYR:CD1	1:A:498:VAL:N	2.73	0.54
1:A:325:VAL:HG12	1:A:329:MET:HE3	1.88	0.54
1:B:303:PRO:O	1:B:337:ARG:NH1	2.39	0.54
1:B:342:SER:H	1:B:446:MET:CE	2.21	0.54
1:B:212:LYS:O	1:B:215:ALA:N	2.41	0.54
1:A:540:THR:HA	1:A:544:LEU:HD12	1.90	0.53
1:B:542:GLU:O	1:B:546:ALA:HB2	2.08	0.53
1:B:94:GLN:HA	1:B:98:ARG:HD2	1.91	0.53
1:B:381:VAL:O	1:B:385:GLN:HG3	2.07	0.53
1:B:389:LYS:O	1:B:393:GLU:HG3	2.09	0.53
1:B:61:ASN:CG	1:B:64:LYS:HE2	2.29	0.53
1:A:424:VAL:O	1:A:428:ARG:HG3	2.09	0.53
1:A:34:CYS:HB3	1:A:39:HIS:NE2	2.24	0.53
1:A:500:LYS:O	1:A:500:LYS:HG2	2.08	0.53
1:A:47:THR:O	1:A:51:LYS:HG3	2.09	0.53
1:B:232:SER:HA	1:B:235:VAL:HG12	1.89	0.53
1:B:232:SER:CA	1:B:235:VAL:HG12	2.39	0.53
1:A:171:ALA:HA	1:B:515:THR:HA	1.91	0.52
1:A:420:THR:HG23	1:A:530:VAL:CG2	2.39	0.52
1:A:337:ARG:HG2	1:A:337:ARG:HH11	1.73	0.52
1:B:96:PRO:C	1:B:97:GLU:HG3	2.29	0.52
1:A:231:VAL:O	1:A:235:VAL:HG23	2.09	0.52
1:A:265:CYS:SG	1:A:279:CYS:HA	2.49	0.52
1:A:278:CYS:HB3	1:A:290:ILE:CD1	2.40	0.52
1:A:384:PRO:O	1:A:388:ILE:HG12	2.09	0.52
1:A:430:LEU:O	1:A:433:VAL:HG12	2.09	0.52
1:B:70:PHE:O	1:B:74:LEU:HD12	2.09	0.52
1:B:384:PRO:O	1:B:388:ILE:HG12	2.09	0.52
1:B:516:LEU:HB3	1:B:520:GLU:OE1	2.10	0.52
1:A:375:ASP:OD1	1:A:375:ASP:N	2.42	0.52
1:A:176:ALA:O	1:A:180:PRO:HG2	2.10	0.51

Continued on next page...

Continued from previous page...

Atom-1	Atom-2	Interatomic distance (Å)	Clash overlap (Å)
1:A:416:PRO:O	1:A:534:LYS:HE2	2.10	0.51
1:B:27:PHE:CE1	1:B:74:LEU:HD11	2.45	0.51
1:B:186:ARG:O	1:B:190:LYS:HG2	2.10	0.51
1:A:278:CYS:HB3	1:A:290:ILE:HD12	1.92	0.51
1:B:100:GLU:HA	1:B:103:LEU:HD12	1.91	0.51
1:B:348:ARG:HH22	1:B:485:ARG:NH2	2.07	0.51
1:A:426:VAL:HG11	1:A:460:LEU:HB2	1.92	0.51
1:B:317:LYS:O	1:B:321:GLU:CB	2.57	0.51
1:B:80:LEU:N	1:B:84:TYR:HH	2.08	0.51
1:B:19:PHE:O	1:B:23:VAL:HG23	2.10	0.51
1:B:481:LEU:HA	1:B:484:ARG:HE	1.76	0.51
1:A:419:SER:OG	1:A:422:THR:HG23	2.11	0.51
1:B:343:VAL:HA	1:B:346:LEU:HD13	1.92	0.51
1:A:117:ARG:HG2	2:A:800:6AK:C13	2.41	0.50
1:A:218:ARG:NH2	1:A:222:ARG:HH11	2.09	0.50
1:A:302:LEU:CB	1:A:337:ARG:HH12	2.25	0.50
1:A:522:GLN:O	1:A:526:GLN:HG2	2.11	0.50
1:B:232:SER:C	1:B:235:VAL:HG12	2.32	0.50
1:B:391:ASN:HD21	1:B:410:ARG:HH22	1.59	0.50
1:A:95:GLU:OE1	1:A:98:ARG:NE	2.34	0.50
1:B:153:GLU:O	1:B:157:PHE:HD1	1.94	0.50
1:B:319:TYR:OH	1:B:358:GLU:OE2	2.26	0.50
1:B:442:GLU:HA	1:B:445:ARG:HB2	1.94	0.50
1:A:394:LEU:O	1:A:398:LEU:HD12	2.12	0.50
1:B:168:CYS:HB2	1:B:178:LEU:HD13	1.94	0.50
1:B:40:VAL:HG12	1:B:44:ASN:OD1	2.12	0.49
1:A:313:LYS:C	1:A:315:VAL:H	2.15	0.49
1:A:366:PRO:CB	1:A:370:TYR:HE2	2.24	0.49
1:A:470:SER:O	1:A:474:THR:HG23	2.11	0.49
1:A:153:GLU:HG2	1:A:257:ARG:HH12	1.77	0.49
1:A:218:ARG:HH21	1:A:222:ARG:HH11	1.59	0.49
1:B:34:CYS:HB3	1:B:39:HIS:HE1	1.76	0.49
1:B:459:GLN:O	1:B:463:LEU:HG	2.12	0.49
1:B:529:LEU:O	1:B:533:VAL:HG23	2.12	0.49
1:A:175:ALA:O	1:A:179:LEU:HD12	2.13	0.49
1:A:151:ALA:O	1:A:154:LEU:N	2.46	0.49
1:A:276:LYS:HE3	1:A:280:GLU:OE2	2.12	0.49
1:B:265:CYS:SG	1:B:286:LYS:HE2	2.52	0.49
1:B:378:LYS:N	1:B:379:PRO:HD2	2.28	0.49
1:A:196:GLN:HE22	1:A:242:HIS:CD2	2.30	0.49
1:A:164:ALA:O	1:A:168:CYS:HB2	2.12	0.49

Continued on next page...

Continued from previous page...

Atom-1	Atom-2	Interatomic distance (Å)	Clash overlap (Å)
1:B:378:LYS:HA	1:B:381:VAL:HG22	1.94	0.48
1:B:118:PRO:HG2	1:B:123:MET:CG	2.43	0.48
1:A:153:GLU:O	1:A:156:PHE:HB3	2.13	0.48
1:A:464:HIS:CE1	1:A:469:VAL:H	2.30	0.48
1:B:42:LEU:HD23	1:B:73:LYS:HE3	1.94	0.48
1:A:49:PHE:CZ	1:A:61:ASN:HB3	2.48	0.48
1:B:27:PHE:HB3	1:B:39:HIS:HD2	1.79	0.48
1:A:408:LEU:HD23	1:A:408:LEU:HA	1.40	0.48
1:A:531:GLU:OE1	1:A:535:HIS:HE1	1.96	0.48
1:A:298:MET:SD	1:A:337:ARG:HA	2.53	0.48
1:B:37:GLU:CD	1:B:37:GLU:H	2.17	0.48
1:B:404:GLN:HG2	1:B:428:ARG:HA	1.96	0.48
1:B:550:ASP:O	1:B:554:PHE:CB	2.61	0.48
1:B:400:GLU:OE1	1:B:435:SER:OG	2.20	0.48
1:B:449:ALA:O	1:B:452:TYR:N	2.46	0.48
1:A:106:LYS:HD3	1:A:147:PRO:HB2	1.96	0.48
1:B:79:THR:N	1:B:84:TYR:OH	2.47	0.48
1:B:440:HIS:ND1	1:B:441:PRO:HD2	2.29	0.48
1:A:224:PRO:CD	1:A:296:ASP:HB3	2.44	0.48
1:B:330:PHE:HE2	1:B:350:ALA:HA	1.77	0.48
1:B:332:TYR:HD1	1:B:333:GLU:HG2	1.78	0.47
1:B:541:LYS:H	1:B:544:LEU:HG	1.79	0.47
1:B:543:GLN:O	1:B:546:ALA:HB3	2.14	0.47
1:B:420:THR:HG23	1:B:530:VAL:CG2	2.44	0.47
1:B:149:PHE:CD1	1:B:154:LEU:HB2	2.49	0.47
1:B:408:LEU:HD21	1:B:427:SER:HB2	1.94	0.47
1:B:452:TYR:O	1:B:455:VAL:HG22	2.14	0.47
1:A:485:ARG:HB3	1:A:486:PRO:HD3	1.95	0.47
1:B:217:ALA:HB2	1:B:331:LEU:HD21	1.96	0.47
1:A:18:ASN:HA	1:A:21:ALA:HB3	1.96	0.47
1:A:529:LEU:O	1:A:533:VAL:HG23	2.14	0.47
1:B:10:ARG:HH21	1:B:252:GLU:CB	2.28	0.47
1:B:196:GLN:O	1:B:196:GLN:HG3	2.14	0.47
1:B:500:LYS:H	1:B:535:HIS:HA	1.78	0.47
1:A:413:LYS:HZ1	1:A:537:PRO:HA	1.79	0.47
1:B:230:GLU:O	1:B:234:LEU:HG	2.15	0.47
1:B:458:ASN:O	1:B:462:VAL:HG13	2.15	0.47
1:A:306:ALA:O	1:A:311:GLU:HG3	2.15	0.46
1:A:561:ALA:C	1:A:563:ASP:N	2.66	0.46
1:B:84:TYR:CD1	1:B:85:GLY:N	2.83	0.46
1:B:77:VAL:HG22	1:B:77:VAL:O	2.15	0.46

Continued on next page...

Continued from previous page...

Atom-1	Atom-2	Interatomic distance (Å)	Clash overlap (Å)
1:A:222:ARG:HG2	1:A:223:PHE:CD1	2.50	0.46
1:B:140:TYR:O	1:B:144:ARG:HG2	2.15	0.46
1:A:218:ARG:O	1:A:218:ARG:NH1	2.49	0.46
1:A:540:THR:HB	1:A:544:LEU:CD1	2.27	0.46
1:A:340:ASP:OD1	1:A:340:ASP:N	2.31	0.46
1:B:352:THR:O	1:B:356:THR:HG23	2.15	0.46
1:A:341:TYR:HA	1:A:446:MET:CE	2.46	0.46
1:A:418:VAL:HG23	1:A:423:LEU:HG	1.98	0.46
1:B:10:ARG:HE	1:B:252:GLU:HB3	1.81	0.46
1:A:36:PHE:CE2	1:A:137:LYS:HD3	2.51	0.46
1:A:215:ALA:CB	1:A:235:VAL:HG13	2.44	0.46
1:A:538:LYS:O	1:A:540:THR:HG23	2.16	0.46
1:B:10:ARG:HH21	1:B:252:GLU:HB3	1.80	0.46
1:B:342:SER:H	1:B:446:MET:HE3	1.80	0.46
1:A:418:VAL:O	1:A:534:LYS:NZ	2.35	0.45
1:A:179:LEU:HD23	2:A:800:6AK:C37	2.46	0.45
1:A:237:ASP:O	1:A:240:LYS:HB3	2.15	0.45
1:B:38:ASP:O	1:B:41:LYS:HB3	2.16	0.45
1:B:268:GLN:HE22	1:B:276:LYS:HA	1.81	0.45
1:B:447:PRO:O	1:B:451:ASP:HB2	2.17	0.45
1:A:32:GLN:NE2	1:A:110:PRO:HG3	2.32	0.45
1:B:196:GLN:HA	1:B:199:LYS:HG3	1.99	0.45
1:B:223:PHE:CD1	1:B:272:SER:HB2	2.52	0.45
1:B:340:ASP:OD1	1:B:340:ASP:N	2.42	0.45
1:B:281:LYS:HB3	1:B:285:GLU:HB3	1.99	0.45
1:B:513:ILE:HA	1:B:516:LEU:HD12	1.99	0.45
1:B:146:HIS:CD2	2:B:802:6AK:CL2	3.07	0.45
1:B:375:ASP:C	1:B:377:PHE:N	2.70	0.45
1:A:49:PHE:HD1	1:A:49:PHE:O	2.00	0.45
1:B:5:SER:CB	1:B:62:CYS:HB3	2.45	0.45
1:B:42:LEU:HD22	1:B:73:LYS:HG3	1.99	0.45
1:B:98:ARG:O	1:B:101:CYS:HB3	2.17	0.45
1:A:541:LYS:H	1:A:543:GLN:CD	2.18	0.44
1:B:73:LYS:NZ	1:B:76:THR:HG21	2.32	0.44
1:A:323:LYS:C	1:A:327:LEU:HD12	2.38	0.44
1:B:410:ARG:HD2	1:B:411:TYR:CE1	2.53	0.44
1:A:472:ARG:NH2	1:A:492:GLU:O	2.51	0.44
1:B:550:ASP:O	1:B:554:PHE:HB3	2.17	0.44
1:A:119:GLU:OE1	1:A:119:GLU:N	2.51	0.44
1:A:94:GLN:C	1:A:98:ARG:HG2	2.38	0.44
1:A:98:ARG:HG3	1:A:99:ASN:H	1.79	0.44

Continued on next page...

Continued from previous page...

Atom-1	Atom-2	Interatomic distance (Å)	Clash overlap (Å)
1:B:215:ALA:HB1	1:B:235:VAL:HG23	1.99	0.44
1:B:123:MET:HG2	2:B:802:6AK:C16	2.47	0.44
1:B:420:THR:HG21	1:B:527:THR:HG23	2.00	0.44
1:A:27:PHE:CD1	1:A:74:LEU:HD21	2.53	0.44
1:A:357:LEU:HD23	1:A:357:LEU:HA	1.80	0.44
1:B:78:ALA:C	1:B:84:TYR:OH	2.57	0.44
1:A:31:LEU:HD23	1:A:31:LEU:HA	1.70	0.43
1:A:417:GLN:H	1:A:417:GLN:CD	2.19	0.43
1:B:375:ASP:C	1:B:377:PHE:H	2.22	0.43
1:A:99:ASN:O	1:A:103:LEU:HD12	2.18	0.43
1:A:428:ARG:HD2	1:A:526:GLN:HE22	1.81	0.43
1:B:86:GLU:OE1	1:B:105:HIS:NE2	2.52	0.43
1:B:348:ARG:NH1	1:B:450:GLU:OE2	2.50	0.43
1:A:217:ALA:HB3	1:A:343:VAL:HG13	2.01	0.43
1:A:367:HIS:O	1:A:371:ALA:HB2	2.18	0.43
1:A:217:ALA:O	1:A:221:GLN:HG3	2.19	0.43
1:A:348:ARG:HG2	1:A:348:ARG:HH11	1.84	0.43
1:A:342:SER:H	1:A:446:MET:CE	2.32	0.43
1:A:363:ALA:HB3	1:A:369:CYS:SG	2.58	0.43
1:A:384:PRO:O	1:A:387:LEU:N	2.51	0.43
1:B:410:ARG:HD2	1:B:411:TYR:HE1	1.83	0.43
1:B:453:LEU:HD12	1:B:453:LEU:H	1.84	0.43
1:A:95:GLU:CA	1:A:98:ARG:HG2	2.47	0.43
1:A:218:ARG:HH22	1:A:295:ASN:HD21	1.65	0.43
1:A:401:TYR:O	1:A:404:GLN:HB2	2.19	0.43
1:B:152:PRO:HB2	1:B:257:ARG:NH1	2.29	0.43
1:A:554:PHE:HE1	1:A:558:CYS:SG	2.42	0.43
1:A:134:PHE:O	1:A:137:LYS:HB2	2.19	0.43
1:A:222:ARG:O	1:A:224:PRO:HD3	2.19	0.43
1:A:367:HIS:HA	1:A:370:TYR:CD1	2.53	0.43
1:A:153:GLU:HG2	1:A:257:ARG:NH1	2.33	0.42
1:B:67:HIS:CD2	1:B:99:ASN:ND2	2.76	0.42
1:B:221:GLN:HG2	1:B:335:ALA:O	2.19	0.42
1:A:554:PHE:HZ	1:A:568:PHE:HA	1.84	0.42
1:A:554:PHE:CZ	1:A:568:PHE:HA	2.54	0.42
1:B:332:TYR:OH	1:B:336:ARG:NH2	2.52	0.42
1:B:530:VAL:O	1:B:534:LYS:HG3	2.19	0.42
1:A:264:ILE:C	1:A:266:GLU:N	2.71	0.42
1:A:366:PRO:HB2	1:A:370:TYR:CE2	2.53	0.42
1:B:511:ALA:HB2	1:B:565:GLU:HB2	1.99	0.42
1:A:372:LYS:HG2	1:A:375:ASP:OD2	2.18	0.42

Continued on next page...

Continued from previous page...

Atom-1	Atom-2	Interatomic distance (Å)	Clash overlap (Å)
1:B:360:CYS:O	1:B:366:PRO:HA	2.18	0.42
1:B:540:THR:HG23	1:B:544:LEU:HD11	2.00	0.42
1:B:544:LEU:C	1:B:546:ALA:N	2.73	0.42
1:B:251:LEU:H	1:B:251:LEU:HD12	1.84	0.42
1:A:373:VAL:HG13	1:A:374:PHE:CD1	2.54	0.42
1:B:27:PHE:HB3	1:B:39:HIS:CD2	2.53	0.42
1:B:564:LYS:C	1:B:566:THR:N	2.73	0.42
1:A:302:LEU:HD22	1:A:302:LEU:HA	1.82	0.42
1:A:337:ARG:HH11	1:A:337:ARG:CG	2.33	0.42
1:A:384:PRO:O	1:A:385:GLN:C	2.56	0.42
1:A:412:THR:CG2	1:A:423:LEU:HD13	2.40	0.42
1:B:135:LEU:HD11	1:B:158:ALA:HB1	2.02	0.42
1:B:276:LYS:H	1:B:276:LYS:HG2	1.64	0.42
1:B:325:VAL:O	1:B:329:MET:HB2	2.20	0.42
1:A:286:LYS:O	1:A:290:ILE:HD13	2.20	0.42
1:A:288:HIS:O	1:A:292:GLU:HG3	2.20	0.42
1:B:231:VAL:O	1:B:235:VAL:CG1	2.66	0.42
1:B:344:VAL:HG12	1:B:451:ASP:OD1	2.20	0.42
1:B:227:GLU:HG2	1:B:228:PHE:N	2.34	0.41
1:B:394:LEU:HD13	1:B:398:LEU:CD1	2.50	0.41
1:B:540:THR:HA	1:B:544:LEU:HG	2.01	0.41
1:A:325:VAL:O	1:A:329:MET:HB2	2.20	0.41
1:A:85:GLY:C	1:A:87:MET:N	2.73	0.41
1:B:348:ARG:HH22	1:B:485:ARG:HH21	1.69	0.41
1:A:189:GLY:HA3	2:A:800:6AK:C24	2.50	0.41
1:A:313:LYS:CG	1:A:367:HIS:HB2	2.50	0.41
1:A:405:ASN:O	1:A:409:VAL:HG23	2.20	0.41
1:B:281:LYS:HB3	1:B:285:GLU:CB	2.51	0.41
1:B:426:VAL:HG11	1:B:460:LEU:HB2	2.03	0.41
1:A:554:PHE:CE1	1:A:558:CYS:SG	3.13	0.41
1:B:157:PHE:CE2	1:B:189:GLY:HA2	2.55	0.41
1:B:405:ASN:O	1:B:408:LEU:HB2	2.20	0.41
1:B:44:ASN:O	1:B:48:GLU:HG2	2.20	0.41
1:B:225:LYS:NZ	1:B:296:ASP:CG	2.73	0.41
1:B:309:PHE:CE1	1:B:326:PHE:HE1	2.39	0.41
1:B:329:MET:O	1:B:332:TYR:HB3	2.19	0.41
1:B:507:PHE:HZ	1:B:532:LEU:HA	1.85	0.41
1:A:464:HIS:HE1	1:A:469:VAL:H	1.69	0.41
1:A:108:ASP:OD1	1:A:197:ARG:NE	2.53	0.41
1:A:306:ALA:C	1:A:311:GLU:HG3	2.41	0.41
1:A:351:LYS:O	1:A:355:THR:HG23	2.21	0.41

Continued on next page...

Continued from previous page...

Atom-1	Atom-2	Interatomic distance (Å)	Clash overlap (Å)
1:B:59:ALA:HB3	1:B:62:CYS:SG	2.61	0.41
1:A:55:ALA:O	1:A:56:ASP:HB3	2.21	0.41
1:A:179:LEU:HD12	1:A:179:LEU:H	1.86	0.41
1:A:376:GLU:H	1:A:376:GLU:HG2	1.62	0.41
1:B:87:MET:HE2	1:B:105:HIS:HB3	2.02	0.41
1:B:184:GLU:O	1:B:188:GLU:HB2	2.21	0.41
1:B:541:LYS:N	1:B:544:LEU:HG	2.36	0.41
1:B:9:HIS:CE1	1:B:10:ARG:HH11	2.38	0.41
1:B:51:LYS:CA	1:B:54:VAL:HG12	2.39	0.41
1:B:186:ARG:HA	2:B:802:6AK:C27	2.51	0.41
1:B:386:ASN:HD21	1:B:390:GLN:HE21	1.69	0.41
1:A:381:VAL:O	1:A:385:GLN:HG3	2.20	0.40
1:B:327:LEU:O	1:B:330:PHE:N	2.53	0.40
1:A:94:GLN:O	1:A:98:ARG:HB3	2.20	0.40
1:A:439:LYS:HG2	1:A:440:HIS:CD2	2.57	0.40
1:A:196:GLN:NE2	1:A:242:HIS:HD2	2.17	0.40
1:A:519:LYS:O	1:A:523:ILE:HG13	2.22	0.40
1:B:217:ALA:O	1:B:221:GLN:HG3	2.21	0.40
1:B:561:ALA:C	1:B:563:ASP:H	2.24	0.40
1:B:276:LYS:O	1:B:280:GLU:HG2	2.21	0.40
1:B:351:LYS:O	1:B:355:THR:HG23	2.21	0.40
1:A:85:GLY:O	1:A:87:MET:N	2.54	0.40
1:B:99:ASN:O	1:B:103:LEU:HG	2.22	0.40
1:B:272:SER:HB3	1:B:275:LEU:HG	2.03	0.40

There are no symmetry-related clashes.

5.3 Torsion angles [i](#)

5.3.1 Protein backbone [i](#)

In the following table, the Percentiles column shows the percent Ramachandran outliers of the chain as a percentile score with respect to all X-ray entries followed by that with respect to entries of similar resolution.

The Analysed column shows the number of residues for which the backbone conformation was analysed, and the total number of residues.

Mol	Chain	Analysed	Favoured	Allowed	Outliers	Percentiles
1	A	566/609 (93%)	506 (89%)	50 (9%)	10 (2%)	8 21

Continued on next page...

Continued from previous page...

Mol	Chain	Analysed	Favoured	Allowed	Outliers	Percentiles
1	B	563/609 (92%)	505 (90%)	50 (9%)	8 (1%)	11 28
All	All	1129/1218 (93%)	1011 (90%)	100 (9%)	18 (2%)	9 24

All (18) Ramachandran outliers are listed below:

Mol	Chain	Res	Type
1	A	58	SER
1	A	78	ALA
1	B	60	GLU
1	B	439	LYS
1	A	57	GLU
1	A	171	ALA
1	A	86	GLU
1	A	563	ASP
1	B	96	PRO
1	B	212	LYS
1	B	541	LYS
1	A	5	SER
1	A	265	CYS
1	B	113	PRO
1	A	479	GLU
1	A	538	LYS
1	B	59	ALA
1	B	95	GLU

5.3.2 Protein sidechains [i](#)

In the following table, the Percentiles column shows the percent sidechain outliers of the chain as a percentile score with respect to all X-ray entries followed by that with respect to entries of similar resolution.

The Analysed column shows the number of residues for which the sidechain conformation was analysed, and the total number of residues.

Mol	Chain	Analysed	Rotameric	Outliers	Percentiles
1	A	446/533 (84%)	424 (95%)	22 (5%)	25 52
1	B	448/533 (84%)	434 (97%)	14 (3%)	40 69
All	All	894/1066 (84%)	858 (96%)	36 (4%)	31 60

All (36) residues with a non-rotameric sidechain are listed below:

Mol	Chain	Res	Type
1	A	7	VAL
1	A	31	LEU
1	A	33	GLN
1	A	37	GLU
1	A	38	ASP
1	A	49	PHE
1	A	58	SER
1	A	61	ASN
1	A	98	ARG
1	A	209	ARG
1	A	265	CYS
1	A	270	SER
1	A	274	LYS
1	A	302	LEU
1	A	334	TYR
1	A	375	ASP
1	A	422	THR
1	A	471	ASP
1	A	481	LEU
1	A	482	VAL
1	A	520	GLU
1	A	526	GLN
1	B	18	ASN
1	B	34	CYS
1	B	38	ASP
1	B	51	LYS
1	B	89	ASP
1	B	232	SER
1	B	302	LEU
1	B	334	TYR
1	B	370	TYR
1	B	378	LYS
1	B	440	HIS
1	B	444	LYS
1	B	471	ASP
1	B	518	GLU

Sometimes sidechains can be flipped to improve hydrogen bonding and reduce clashes. All (17) such sidechains are listed below:

Mol	Chain	Res	Type
1	A	99	ASN
1	A	146	HIS
1	A	242	HIS

Continued on next page...

Continued from previous page...

Mol	Chain	Res	Type
1	A	295	ASN
1	A	429	ASN
1	A	464	HIS
1	A	526	GLN
1	B	9	HIS
1	B	32	GLN
1	B	39	HIS
1	B	99	ASN
1	B	104	GLN
1	B	204	GLN
1	B	268	GLN
1	B	386	ASN
1	B	390	GLN
1	B	391	ASN

5.3.3 RNA [i](#)

There are no RNA molecules in this entry.

5.4 Non-standard residues in protein, DNA, RNA chains [i](#)

There are no non-standard protein/DNA/RNA residues in this entry.

5.5 Carbohydrates [i](#)

There are no monosaccharides in this entry.

5.6 Ligand geometry [i](#)

4 ligands are modelled in this entry.

In the following table, the Counts columns list the number of bonds (or angles) for which Mogul statistics could be retrieved, the number of bonds (or angles) that are observed in the model and the number of bonds (or angles) that are defined in the Chemical Component Dictionary. The Link column lists molecule types, if any, to which the group is linked. The Z score for a bond length (or angle) is the number of standard deviations the observed value is removed from the expected value. A bond length (or angle) with $|Z| > 2$ is considered an outlier worth inspection. RMSZ is the root-mean-square of all Z scores of the bond lengths (or angles).

Mol	Type	Chain	Res	Link	Bond lengths			Bond angles		
					Counts	RMSZ	# Z > 2	Counts	RMSZ	# Z > 2
3	PO4	B	801	-	4,4,4	1.07	0	6,6,6	1.55	1 (16%)
3	PO4	A	801	-	4,4,4	1.12	0	6,6,6	2.59	3 (50%)
2	6AK	A	800	-	47,56,56	1.76	8 (17%)	56,85,85	2.82	22 (39%)
2	6AK	B	802	-	47,56,56	1.45	6 (12%)	56,85,85	2.75	11 (19%)

In the following table, the Chirals column lists the number of chiral outliers, the number of chiral centers analysed, the number of these observed in the model and the number defined in the Chemical Component Dictionary. Similar counts are reported in the Torsion and Rings columns. '-' means no outliers of that kind were identified.

Mol	Type	Chain	Res	Link	Chirals	Torsions	Rings
2	6AK	A	800	-	-	7/19/33/33	0/6/7/7
2	6AK	B	802	-	-	5/19/33/33	0/6/7/7

All (14) bond length outliers are listed below:

Mol	Chain	Res	Type	Atoms	Z	Observed(Å)	Ideal(Å)
2	A	800	6AK	C14-N02	-5.76	1.45	1.49
2	A	800	6AK	C12-N01	5.33	1.43	1.37
2	B	802	6AK	C12-N01	5.24	1.43	1.37
2	A	800	6AK	C08-C07	-3.37	1.46	1.52
2	B	802	6AK	C30-C31	3.33	1.43	1.37
2	A	800	6AK	C19-C02	-3.19	1.48	1.50
2	B	802	6AK	C19-C02	-3.12	1.48	1.50
2	B	802	6AK	C05-C04	3.04	1.43	1.36
2	A	800	6AK	C13-N01	2.74	1.51	1.47
2	A	800	6AK	C30-C31	2.66	1.42	1.37
2	A	800	6AK	O03-C32	2.37	1.29	1.22
2	B	802	6AK	O03-C32	2.29	1.29	1.22
2	B	802	6AK	C31-C32	2.23	1.54	1.49
2	A	800	6AK	C21-C20	-2.03	1.46	1.50

All (37) bond angle outliers are listed below:

Mol	Chain	Res	Type	Atoms	Z	Observed(°)	Ideal(°)
2	A	800	6AK	C15-C14-N02	-11.37	102.27	111.18
2	B	802	6AK	C14-C15-C13	-11.04	100.64	112.31
2	B	802	6AK	O02-C12-N01	8.34	129.52	121.01
2	B	802	6AK	C11-C12-N01	-7.69	107.48	119.53
2	A	800	6AK	C09-C08-C07	-7.21	98.71	113.24
2	A	800	6AK	C11-C12-N01	-6.30	109.66	119.53

Continued on next page...

Continued from previous page...

Mol	Chain	Res	Type	Atoms	Z	Observed(°)	Ideal(°)
2	B	802	6AK	C19-C02-C03	-5.25	115.34	121.63
3	A	801	PO4	O4-P-O2	-5.00	91.91	107.97
2	A	800	6AK	O02-C12-N01	4.50	125.60	121.01
2	A	800	6AK	C14-C15-C13	-4.33	107.74	112.31
2	B	802	6AK	C16-N03-C17	-4.18	123.35	128.82
2	B	802	6AK	C15-C14-N02	4.05	114.36	111.18
2	B	802	6AK	C09-C08-C07	-3.99	105.19	113.24
2	B	802	6AK	C30-C31-C32	3.98	129.14	120.67
2	A	800	6AK	C02-C19-C20	3.95	134.86	127.52
2	A	800	6AK	C33-C31-C32	-3.81	113.08	119.98
2	B	802	6AK	C33-C31-C32	-3.72	113.24	119.98
2	B	802	6AK	O01-C10-C09	-3.45	95.50	108.33
2	A	800	6AK	C23-C22-CL2	3.23	124.58	118.19
2	A	800	6AK	O01-C10-C09	-3.22	96.36	108.33
2	A	800	6AK	C29-C28-C27	3.17	125.35	119.49
2	A	800	6AK	C28-C22-CL2	-3.05	112.17	118.19
3	A	801	PO4	O4-P-O3	2.96	117.48	107.97
2	A	800	6AK	C02-C19-C17	-2.96	122.02	127.52
2	A	800	6AK	C04-C05-C06	-2.75	117.30	121.13
2	A	800	6AK	C10-O01-C26	2.73	125.05	117.93
2	A	800	6AK	C16-N03-C17	-2.54	125.50	128.82
3	B	801	PO4	O4-P-O2	2.49	115.95	107.97
2	A	800	6AK	C26-C27-C28	2.47	123.25	120.59
2	A	800	6AK	C30-C31-C32	2.47	125.92	120.67
2	A	800	6AK	C19-C02-C03	-2.34	118.83	121.63
2	A	800	6AK	C04-C03-CL	-2.31	113.77	118.41
2	A	800	6AK	C05-C06-C01	2.26	120.95	116.73
3	A	801	PO4	O2-P-O1	2.25	119.11	110.89
2	A	800	6AK	O01-C26-C27	2.21	130.46	119.86
2	A	800	6AK	C13-N01-C34	2.09	119.57	115.62
2	B	802	6AK	C10-O01-C26	2.03	123.23	117.93

There are no chirality outliers.

All (12) torsion outliers are listed below:

Mol	Chain	Res	Type	Atoms
2	B	802	6AK	C07-C08-C09-C10
2	B	802	6AK	C08-C09-C10-O01
2	A	800	6AK	C33-C31-C32-O04
2	A	800	6AK	C08-C09-C10-O01
2	A	800	6AK	C30-C31-C32-O04
2	A	800	6AK	C33-C31-C32-O03

Continued on next page...

Continued from previous page...

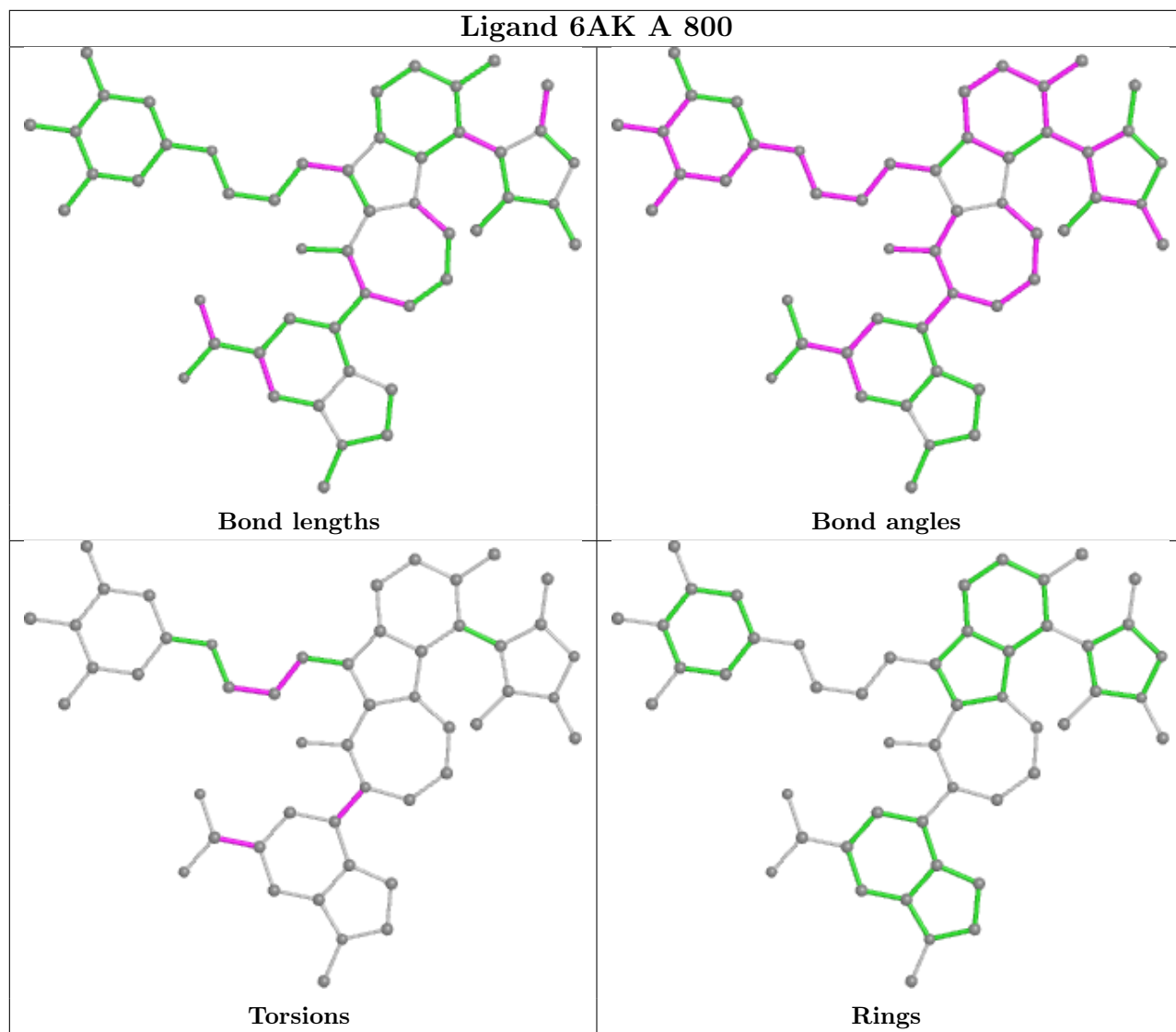
Mol	Chain	Res	Type	Atoms
2	A	800	6AK	C30-C31-C32-O03
2	B	802	6AK	C33-C31-C32-O04
2	A	800	6AK	C35-C34-N01-C12
2	B	802	6AK	C30-C31-C32-O04
2	A	800	6AK	C07-C08-C09-C10
2	B	802	6AK	C33-C31-C32-O03

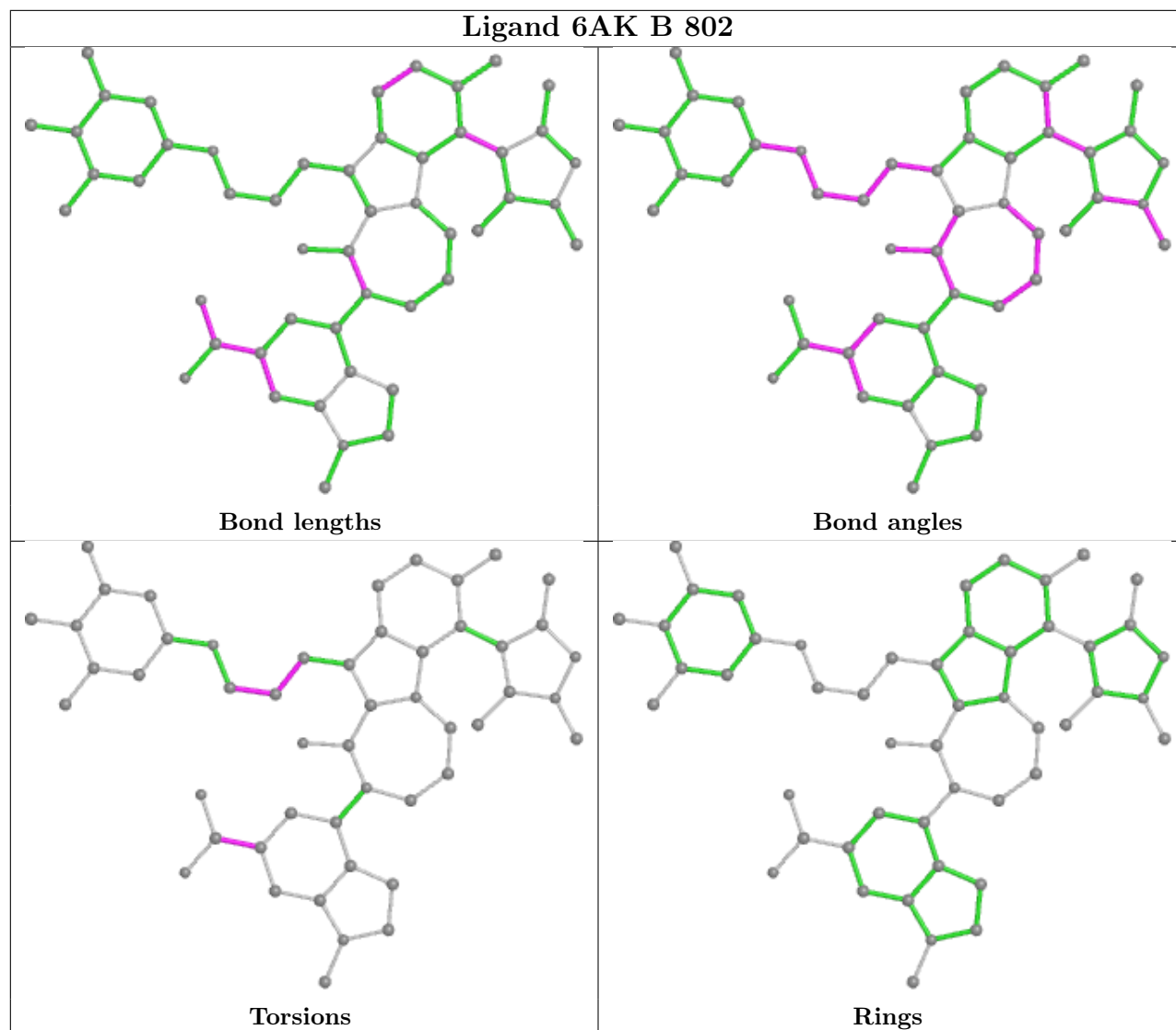
There are no ring outliers.

3 monomers are involved in 9 short contacts:

Mol	Chain	Res	Type	Clashes	Symm-Clashes
3	A	801	PO4	1	0
2	A	800	6AK	4	0
2	B	802	6AK	4	0

The following is a two-dimensional graphical depiction of Mogul quality analysis of bond lengths, bond angles, torsion angles, and ring geometry for all instances of the Ligand of Interest. In addition, ligands with molecular weight > 250 and outliers as shown on the validation Tables will also be included. For torsion angles, if less than 5% of the Mogul distribution of torsion angles is within 10 degrees of the torsion angle in question, then that torsion angle is considered an outlier. Any bond that is central to one or more torsion angles identified as an outlier by Mogul will be highlighted in the graph. For rings, the root-mean-square deviation (RMSD) between the ring in question and similar rings identified by Mogul is calculated over all ring torsion angles. If the average RMSD is greater than 60 degrees and the minimal RMSD between the ring in question and any Mogul-identified rings is also greater than 60 degrees, then that ring is considered an outlier. The outliers are highlighted in purple. The color gray indicates Mogul did not find sufficient equivalents in the CSD to analyse the geometry.





5.7 Other polymers [\(i\)](#)

There are no such residues in this entry.

5.8 Polymer linkage issues [\(i\)](#)

There are no chain breaks in this entry.

6 Fit of model and data

6.1 Protein, DNA and RNA chains

In the following table, the column labelled ‘#RSRZ > 2’ contains the number (and percentage) of RSRZ outliers, followed by percent RSRZ outliers for the chain as percentile scores relative to all X-ray entries and entries of similar resolution. The OWAB column contains the minimum, median, 95th percentile and maximum values of the occupancy-weighted average B-factor per residue. The column labelled ‘Q < 0.9’ lists the number of (and percentage) of residues with an average occupancy less than 0.9.

Mol	Chain	Analysed	<RSRZ>	#RSRZ>2	OWAB(Å ²)	Q<0.9
1	A	568/609 (93%)	0.03	13 (2%) 60 62	36, 64, 110, 134	0
1	B	565/609 (92%)	0.06	14 (2%) 57 59	42, 70, 110, 139	0
All	All	1133/1218 (93%)	0.04	27 (2%) 59 60	36, 67, 110, 139	0

All (27) RSRZ outliers are listed below:

Mol	Chain	Res	Type	RSRZ
1	A	78	ALA	8.0
1	A	79	THR	5.6
1	B	353	TYR	4.2
1	B	363	ALA	4.2
1	B	507	PHE	4.2
1	A	84	TYR	4.1
1	A	87	MET	4.0
1	B	31	LEU	3.9
1	A	539	ALA	3.6
1	A	509	PHE	3.4
1	A	551	PHE	3.4
1	B	96	PRO	3.2
1	A	507	PHE	3.1
1	B	374	PHE	3.0
1	A	314	ASP	2.9
1	B	380	LEU	2.6
1	B	330	PHE	2.6
1	B	537	PRO	2.5
1	B	70	PHE	2.5
1	B	294	GLU	2.4
1	A	540	THR	2.4
1	B	79	THR	2.3
1	B	278	CYS	2.3
1	A	8	ALA	2.2

Continued on next page...

Continued from previous page...

Mol	Chain	Res	Type	RSRZ
1	A	319	TYR	2.2
1	A	96	PRO	2.2
1	B	78	ALA	2.1

6.2 Non-standard residues in protein, DNA, RNA chains [i](#)

There are no non-standard protein/DNA/RNA residues in this entry.

6.3 Carbohydrates [i](#)

There are no monosaccharides in this entry.

6.4 Ligands [i](#)

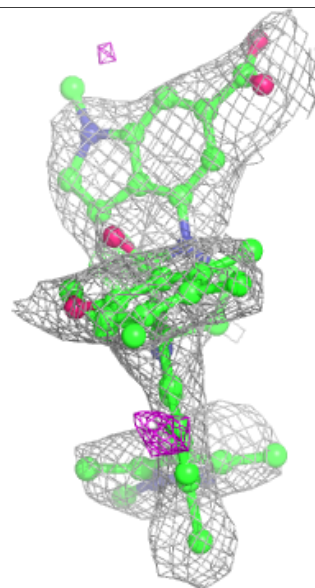
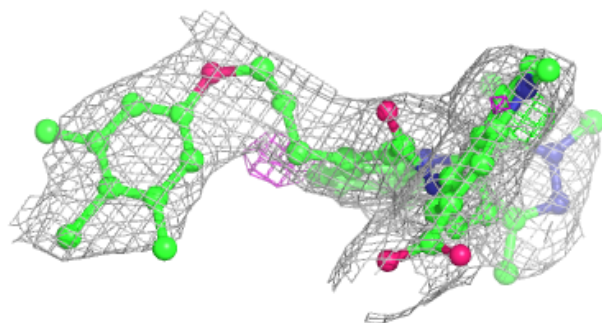
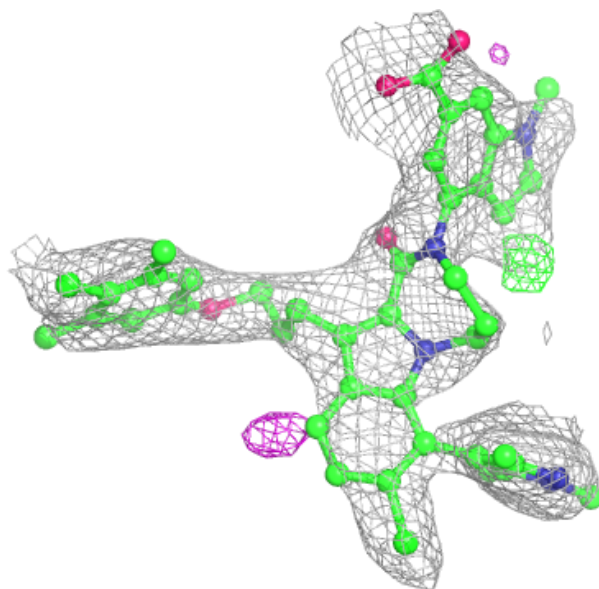
In the following table, the Atoms column lists the number of modelled atoms in the group and the number defined in the chemical component dictionary. The B-factors column lists the minimum, median, 95th percentile and maximum values of B factors of atoms in the group. The column labelled 'Q< 0.9' lists the number of atoms with occupancy less than 0.9.

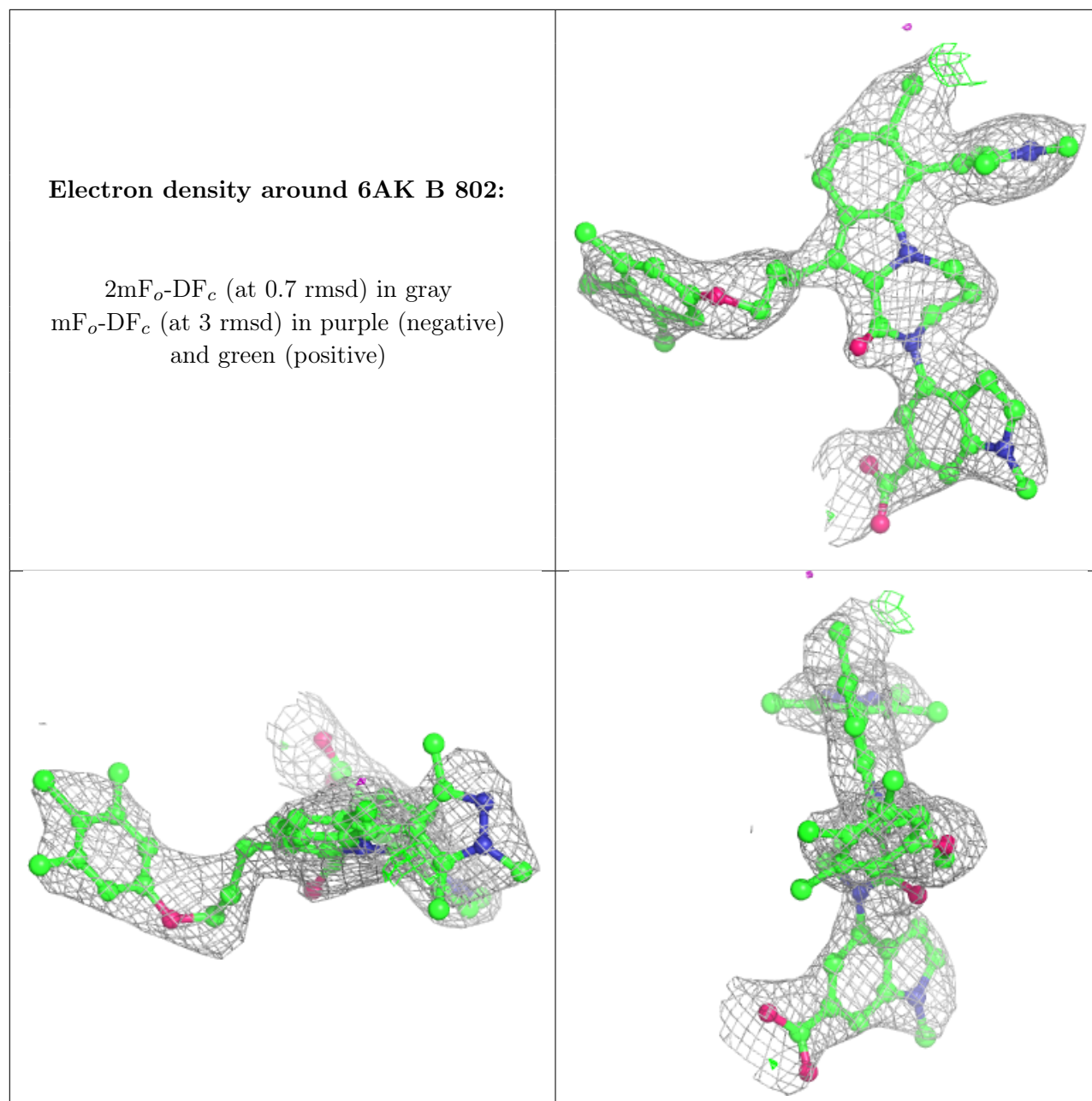
Mol	Type	Chain	Res	Atoms	RSCC	RSR	B-factors(Å ²)	Q<0.9
2	6AK	A	800	50/50	0.86	0.30	26,61,87,91	50
3	PO4	A	801	5/5	0.89	0.16	37,47,60,77	0
2	6AK	B	802	50/50	0.90	0.32	23,51,61,88	50
3	PO4	B	801	5/5	0.96	0.11	30,42,55,56	0

The following is a graphical depiction of the model fit to experimental electron density of all instances of the Ligand of Interest. In addition, ligands with molecular weight > 250 and outliers as shown on the geometry validation Tables will also be included. Each fit is shown from different orientation to approximate a three-dimensional view.

Electron density around 6AK A 800:

$2mF_o-DF_c$ (at 0.7 rmsd) in gray
 mF_o-DF_c (at 3 rmsd) in purple (negative)
and green (positive)





6.5 Other polymers [\(i\)](#)

There are no such residues in this entry.