



## Full wwPDB EM Validation Report ⓘ

Feb 5, 2024 – 12:56 PM EST

PDB ID : 7UKE  
EMDB ID : EMD-26578  
Title : Human Kv4.2-KChIP2 channel complex in an intermediate state, transmembrane region  
Authors : Zhao, H.; Dai, Y.; Lee, C.H.  
Deposited on : 2022-04-01  
Resolution : 3.01 Å(reported)

This is a Full wwPDB EM Validation Report for a publicly released PDB entry.

We welcome your comments at [validation@mail.wwpdb.org](mailto:validation@mail.wwpdb.org)

A user guide is available at

<https://www.wwpdb.org/validation/2017/EMValidationReportHelp>

with specific help available everywhere you see the ⓘ symbol.

The types of validation reports are described at

<http://www.wwpdb.org/validation/2017/FAQs#types>.

---

The following versions of software and data (see [references ⓘ](#)) were used in the production of this report:

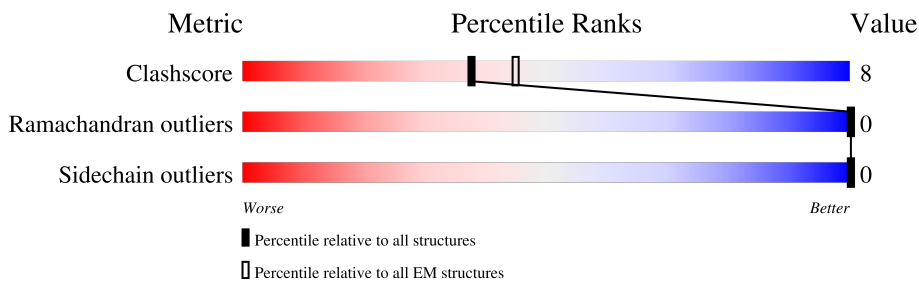
EMDB validation analysis : 0.0.1.dev70  
MolProbity : 4.02b-467  
Percentile statistics : 20191225.v01 (using entries in the PDB archive December 25th 2019)  
MapQ : 1.9.9  
Ideal geometry (proteins) : Engh & Huber (2001)  
Ideal geometry (DNA, RNA) : Parkinson et al. (1996)  
Validation Pipeline (wwPDB-VP) : 2.36

# 1 Overall quality at a glance

The following experimental techniques were used to determine the structure:  
*ELECTRON MICROSCOPY*

The reported resolution of this entry is 3.01 Å.

Percentile scores (ranging between 0-100) for global validation metrics of the entry are shown in the following graphic. The table shows the number of entries on which the scores are based.



Metric	Whole archive (#Entries)	EM structures (#Entries)
Clashscore	158937	4297
Ramachandran outliers	154571	4023
Sidechain outliers	154315	3826

The table below summarises the geometric issues observed across the polymeric chains and their fit to the map. The red, orange, yellow and green segments of the bar indicate the fraction of residues that contain outliers for  $\geq 3$ , 2, 1 and 0 types of geometric quality criteria respectively. A grey segment represents the fraction of residues that are not modelled. The numeric value for each fraction is indicated below the corresponding segment, with a dot representing fractions  $\leq 5\%$ . The upper red bar (where present) indicates the fraction of residues that have poor fit to the EM map (all-atom inclusion  $< 40\%$ ). The numeric value is given above the bar.

Mol	Chain	Length	Quality of chain
1	A	524	
1	B	524	
1	C	524	
1	D	524	

## 2 Entry composition

There are 2 unique types of molecules in this entry. The entry contains 8000 atoms, of which 0 are hydrogens and 0 are deuteriums.

In the tables below, the AltConf column contains the number of residues with at least one atom in alternate conformation and the Trace column contains the number of residues modelled with at most 2 atoms.

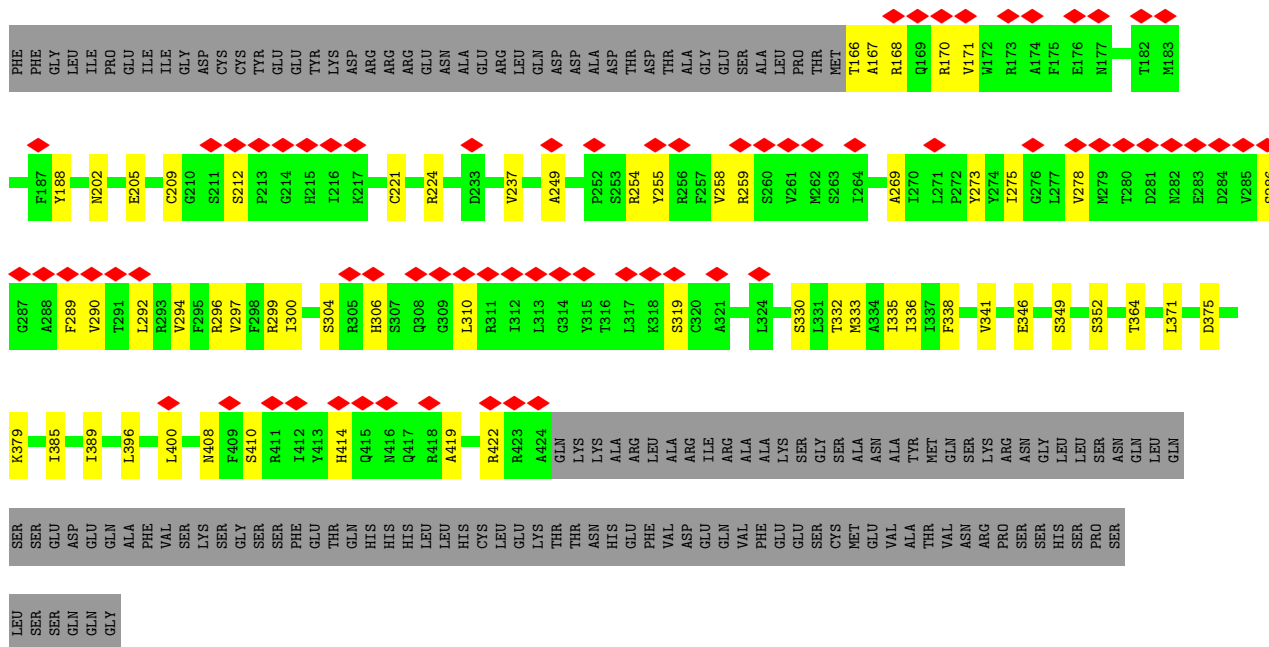
- Molecule 1 is a protein called Potassium voltage-gated channel subfamily D member 2.

Mol	Chain	Residues	Atoms					AltConf	Trace
			Total	C	N	O	S		
1	A	259	1999	1313	333	339	14	0	0
1	B	259	1999	1313	333	339	14	0	0
1	C	259	1999	1313	333	339	14	0	0
1	D	259	1999	1313	333	339	14	0	0

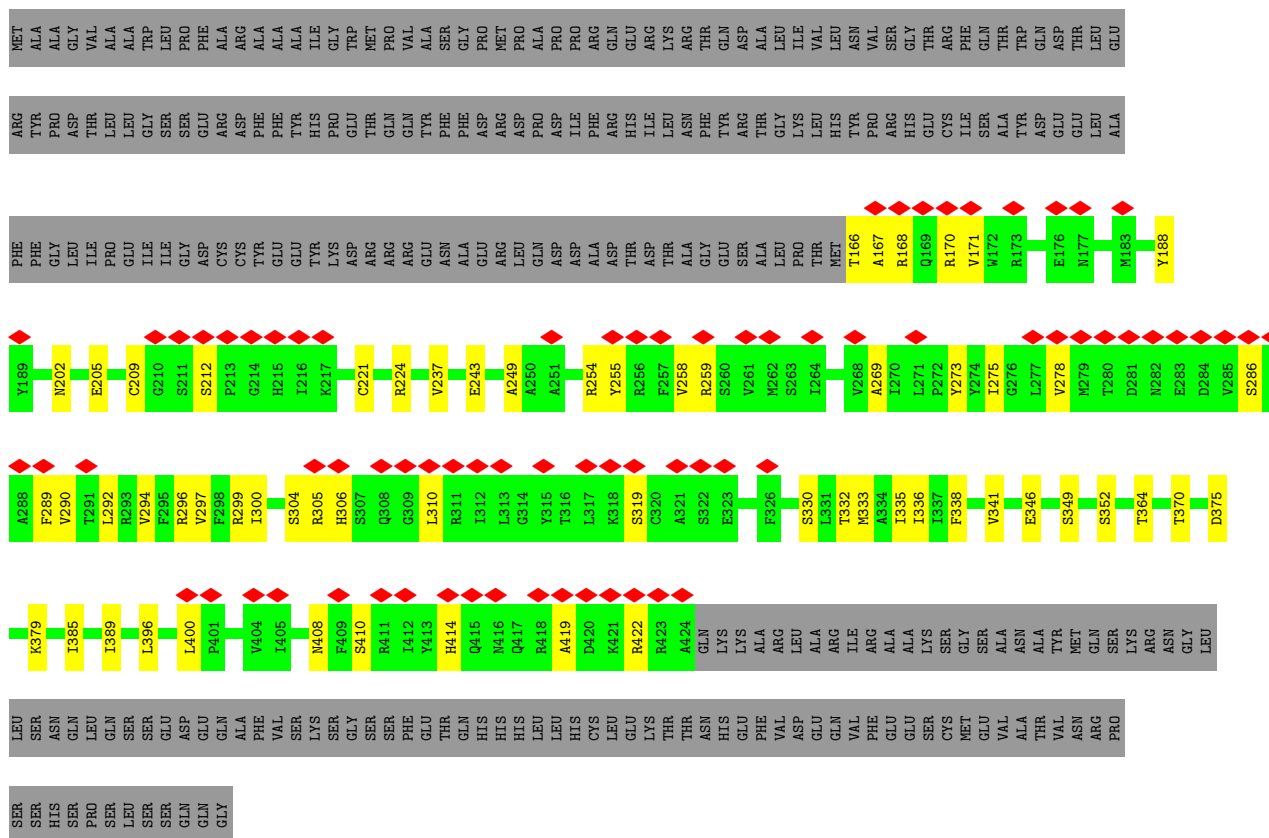
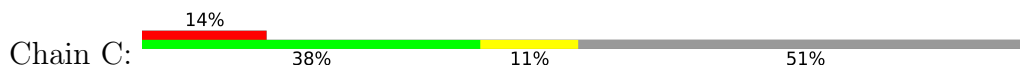
- Molecule 2 is POTASSIUM ION (three-letter code: K) (formula: K) (labeled as "Ligand of Interest" by depositor).

Mol	Chain	Residues	Atoms		AltConf
2	A	4	Total	K	0
			4	4	

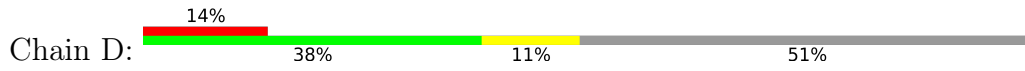




• Molecule 1: Potassium voltage-gated channel subfamily D member 2



• Molecule 1: Potassium voltage-gated channel subfamily D member 2



MET  
ALA  
ALA  
GLY  
VAL  
ALA  
ALA  
TRP  
LEU  
LEU  
SER  
PHE  
GLU  
GLU  
ASP  
ARG  
ALA  
ALA  
ALA  
ALA  
ILE  
ILE  
GLY  
PRO  
GLY  
TRP  
MET  
PRO  
GLN  
VAL  
ALA  
ALA  
SER  
GLY  
PRO  
PRO  
MET  
ARG  
GLN  
GLU  
ARG  
ILE  
ARG  
GLY  
LYS  
ARG  
THR  
GLN  
ASP  
ALA  
LEU  
LEU  
VAL  
LEU  
LEU  
ASN  
VAL  
VAL  
SER  
SER  
GLY  
THR  
ARG  
PHE  
GLN  
THR  
THR  
TRP  
GLN  
ASP  
THR  
LEU  
LEU  
GLU

ARG  
TYR  
PRO  
ASP  
THR  
LEU  
LEU  
GLY  
SER  
GLU  
ASP  
ARG  
ASP  
PHE  
PHE  
GLU  
TYR  
HIS  
TYR  
PRO  
GLY  
THR  
THR  
GLN  
GLN  
TYR  
PHE  
PHE  
ASP  
ASP  
ARG  
ARG  
PRO  
GLN  
ASP  
ASP  
ILE  
PHE  
ARG  
PHE  
HIS  
ILE  
LEU  
LEU  
ASN  
PHE  
TYR  
ARG  
THR  
GLY  
LYS  
LEU  
LEU  
VAL  
HIS  
TYR  
PRO  
VAL  
ARG  
HIS  
GLY  
THR  
CYS  
ILE  
SER  
GLN  
ALA  
ALA  
ASP  
GLU  
LEU  
ALA

PHE  
PHE  
GLY  
LEU  
ILE  
PRO  
GLU  
ILE  
ILE  
GLY  
ASP  
CYS  
CYS  
TYR  
GLU  
GLY  
TYR  
LYS  
ASP  
ARG  
ARG  
ARG  
GLN  
ASN  
ALA  
ALA  
GLU  
ARG  
LEU  
GLN  
ASP  
ASP  
ALA  
ASP  
ALA  
THR  
THR  
THR  
ALA  
GLY  
GLU  
SER  
SER  
ALA  
LEU  
PRO  
THR  
MET  
T166  
A167  
R168  
Q169  
R170  
V171  
W172  
R173  
A174  
F175  
E176  
M177  
P178  
H179

T182  
M183  
A184  
L185  
V186  
F187  
Y188  
M202  
E205  
C209  
G210  
S211  
S212  
P213  
G214  
H215  
I216  
K217  
C221  
R224  
D233  
V237  
A249  
P252  
S253  
R254  
Y255  
R256  
F257  
V258  
R259  
S260  
V261  
M262  
S263  
I264  
A269  
I270  
L271  
P272  
Y273  
V274  
I275  
G276  
L277  
V278  
M279  
T280  
D281  
M282

E283  
D284  
V285  
S286  
A288  
F289  
V290  
T291  
L292  
R293  
V294  
F295  
R296  
V297  
F298  
R299  
I300  
S304  
R305  
H306  
Q308  
G309  
L310  
R311  
I312  
L313  
G314  
Y315  
T316  
L317  
S319  
G320  
A321  
L324  
S330  
L331  
T332  
M333  
A334  
I336  
M342  
E346  
S349  
S352  
T364  
L371

D375  
P378  
K379  
I385  
I389  
L396  
L400  
N408  
F409  
S410  
R411  
I412  
Y413  
H414  
Q415  
M416  
Q417  
R418  
A419  
R422  
R423  
A424  
GLN  
LYS  
ALA  
ARG  
LEU  
ALA  
ARG  
ARG  
ILE  
ARG  
ALA  
ALA  
LYS  
SER  
GLY  
SER  
ALA  
ASN  
ALA  
TYR  
MET  
GLN  
SER  
LYS  
ARG  
ASN  
GLY  
LEU  
LEU  
SER  
ASN

GLN  
LEU  
GLN  
SER  
SER  
GLU  
ASP  
GLU  
GLN  
ALA  
PHE  
VAL  
SER  
LYS  
SER  
GLY  
SER  
SER  
PHE  
GLU  
THR  
GLN  
HIS  
HIS  
HIS  
LEU  
LEU  
HIS  
CYS  
LEU  
GLU  
LYS  
THR  
THR  
ASN  
HIS  
GLU  
PHE  
VAL  
ASP  
GLU  
GLN  
VAL  
PHE  
GLU  
SER  
CYS  
MET  
GLU  
VAL  
ALA  
THR  
VAL  
ASN  
ARG  
PRO  
SER  
SER  
HIS

SER  
PRO  
SER  
LEU  
SER  
SER  
SER  
GLN  
GLY

## 4 Experimental information

Property	Value	Source
EM reconstruction method	SINGLE PARTICLE	Depositor
Imposed symmetry	POINT, Not provided	
Number of particles used	199309	Depositor
Resolution determination method	FSC 0.143 CUT-OFF	Depositor
CTF correction method	NONE	Depositor
Microscope	FEI TITAN KRIOS	Depositor
Voltage (kV)	300	Depositor
Electron dose ( $e^-/\text{\AA}^2$ )	76.4	Depositor
Minimum defocus (nm)	600	Depositor
Maximum defocus (nm)	1600	Depositor
Magnification	Not provided	
Image detector	GATAN K3 (6k x 4k)	Depositor
Maximum map value	3.396	Depositor
Minimum map value	-2.140	Depositor
Average map value	0.005	Depositor
Map value standard deviation	0.060	Depositor
Recommended contour level	0.5	Depositor
Map size ( $\text{\AA}$ )	290.75198, 290.75198, 290.75198	wwPDB
Map dimensions	352, 352, 352	wwPDB
Map angles ( $^\circ$ )	90.0, 90.0, 90.0	wwPDB
Pixel spacing ( $\text{\AA}$ )	0.826, 0.826, 0.826	Depositor

## 5 Model quality [i](#)

### 5.1 Standard geometry [i](#)

Bond lengths and bond angles in the following residue types are not validated in this section: K

The Z score for a bond length (or angle) is the number of standard deviations the observed value is removed from the expected value. A bond length (or angle) with  $|Z| > 5$  is considered an outlier worth inspection. RMSZ is the root-mean-square of all Z scores of the bond lengths (or angles).

Mol	Chain	Bond lengths		Bond angles	
		RMSZ	# Z  >5	RMSZ	# Z  >5
1	A	0.27	0/2047	0.43	0/2781
1	B	0.27	0/2047	0.43	0/2781
1	C	0.27	0/2047	0.43	0/2781
1	D	0.27	0/2047	0.43	0/2781
All	All	0.27	0/8188	0.43	0/11124

There are no bond length outliers.

There are no bond angle outliers.

There are no chirality outliers.

There are no planarity outliers.

### 5.2 Too-close contacts [i](#)

In the following table, the Non-H and H(model) columns list the number of non-hydrogen atoms and hydrogen atoms in the chain respectively. The H(added) column lists the number of hydrogen atoms added and optimized by MolProbity. The Clashes column lists the number of clashes within the asymmetric unit, whereas Symm-Clashes lists symmetry-related clashes.

Mol	Chain	Non-H	H(model)	H(added)	Clashes	Symm-Clashes
1	A	1999	0	2031	33	0
1	B	1999	0	2031	32	0
1	C	1999	0	2031	34	0
1	D	1999	0	2031	33	0
2	A	4	0	0	0	0
All	All	8000	0	8124	130	0

The all-atom clashscore is defined as the number of clashes found per 1000 atoms (including hydrogen atoms). The all-atom clashscore for this structure is 8.



All (130) close contacts within the same asymmetric unit are listed below, sorted by their clash magnitude.

Atom-1	Atom-2	Interatomic distance (Å)	Clash overlap (Å)
1:C:410:SER:O	1:C:414:HIS:ND1	2.21	0.73
1:B:410:SER:O	1:B:414:HIS:ND1	2.21	0.73
1:A:410:SER:O	1:A:414:HIS:ND1	2.21	0.73
1:D:410:SER:O	1:D:414:HIS:ND1	2.21	0.72
1:D:168:ARG:NH1	1:D:249:ALA:O	2.36	0.59
1:A:168:ARG:NH1	1:A:249:ALA:O	2.36	0.58
1:B:168:ARG:NH1	1:B:249:ALA:O	2.36	0.58
1:C:168:ARG:NH1	1:C:249:ALA:O	2.36	0.57
1:B:269:ALA:HB1	1:B:299:ARG:HG2	1.88	0.56
1:D:202:ASN:OD1	1:D:296:ARG:NH2	2.38	0.56
1:C:269:ALA:HB1	1:C:299:ARG:HG2	1.88	0.56
1:A:202:ASN:OD1	1:A:296:ARG:NH2	2.39	0.55
1:B:202:ASN:OD1	1:B:296:ARG:NH2	2.38	0.55
1:C:202:ASN:OD1	1:C:296:ARG:NH2	2.38	0.55
1:A:269:ALA:HB1	1:A:299:ARG:HG2	1.88	0.55
1:C:297:VAL:O	1:C:300:ILE:HG22	2.07	0.54
1:A:370:THR:HA	1:B:371:LEU:HD23	1.89	0.54
1:B:297:VAL:O	1:B:300:ILE:HG22	2.07	0.54
1:D:269:ALA:HB1	1:D:299:ARG:HG2	1.88	0.54
1:D:297:VAL:O	1:D:300:ILE:HG22	2.07	0.54
1:A:297:VAL:O	1:A:300:ILE:HG22	2.07	0.54
1:A:349:SER:HB2	1:A:352:SER:HB3	1.91	0.53
1:D:349:SER:HB2	1:D:352:SER:HB3	1.91	0.53
1:B:349:SER:HB2	1:B:352:SER:HB3	1.91	0.53
1:C:370:THR:HA	1:D:371:LEU:HD23	1.89	0.52
1:C:349:SER:HB2	1:C:352:SER:HB3	1.91	0.52
1:A:319:SER:OG	1:A:408:ASN:OD1	2.14	0.52
1:B:205:GLU:OE2	1:B:296:ARG:NH2	2.46	0.49
1:D:205:GLU:OE2	1:D:296:ARG:NH2	2.45	0.49
1:C:205:GLU:OE2	1:C:296:ARG:NH2	2.46	0.49
1:A:205:GLU:OE2	1:A:296:ARG:NH2	2.46	0.49
1:B:212:SER:O	1:B:212:SER:OG	2.31	0.49
1:C:319:SER:OG	1:C:408:ASN:OD1	2.14	0.49
1:C:385:ILE:O	1:C:389:ILE:HG12	2.13	0.49
1:A:375:ASP:OD1	1:A:375:ASP:N	2.46	0.49
1:B:188:TYR:OH	1:B:306:HIS:HA	2.14	0.48
1:D:346:GLU:OE2	1:D:379:LYS:N	2.46	0.48
1:D:375:ASP:N	1:D:375:ASP:OD1	2.46	0.48
1:A:188:TYR:OH	1:A:306:HIS:HA	2.14	0.48
1:C:188:TYR:OH	1:C:306:HIS:HA	2.14	0.48

*Continued on next page...*

*Continued from previous page...*

Atom-1	Atom-2	Interatomic distance (Å)	Clash overlap (Å)
1:D:188:TYR:OH	1:D:306:HIS:HA	2.14	0.48
1:C:212:SER:OG	1:C:212:SER:O	2.31	0.48
1:D:385:ILE:O	1:D:389:ILE:HG12	2.13	0.48
1:B:375:ASP:OD1	1:B:375:ASP:N	2.46	0.48
1:C:346:GLU:OE2	1:C:379:LYS:N	2.46	0.48
1:C:375:ASP:OD1	1:C:375:ASP:N	2.46	0.48
1:C:286:SER:HA	1:C:289:PHE:HE1	1.78	0.48
1:D:286:SER:HA	1:D:289:PHE:HE1	1.78	0.47
1:A:385:ILE:O	1:A:389:ILE:HG12	2.13	0.47
1:B:275:ILE:HA	1:B:278:VAL:HG22	1.97	0.47
1:B:385:ILE:O	1:B:389:ILE:HG12	2.13	0.47
1:C:275:ILE:HA	1:C:278:VAL:HG22	1.97	0.47
1:A:286:SER:HA	1:A:289:PHE:HE1	1.78	0.47
1:A:346:GLU:OE2	1:A:379:LYS:N	2.46	0.47
1:B:330:SER:HA	1:B:333:MET:HG2	1.97	0.47
1:B:286:SER:HA	1:B:289:PHE:HE1	1.78	0.47
1:B:346:GLU:OE2	1:B:379:LYS:N	2.46	0.47
1:D:275:ILE:HA	1:D:278:VAL:HG22	1.97	0.47
1:D:330:SER:HA	1:D:333:MET:HG2	1.97	0.46
1:A:275:ILE:HA	1:A:278:VAL:HG22	1.97	0.46
1:A:330:SER:HA	1:A:333:MET:HG2	1.97	0.46
1:C:330:SER:HA	1:C:333:MET:HG2	1.97	0.46
1:C:167:ALA:O	1:C:171:VAL:HG23	2.17	0.45
1:D:419:ALA:HA	1:D:422:ARG:HD2	1.99	0.45
1:B:319:SER:OG	1:B:408:ASN:OD1	2.14	0.45
1:B:167:ALA:O	1:B:171:VAL:HG23	2.17	0.45
1:A:419:ALA:HA	1:A:422:ARG:HD2	1.99	0.45
1:C:419:ALA:HA	1:C:422:ARG:HD2	1.99	0.45
1:A:167:ALA:O	1:A:171:VAL:HG23	2.17	0.44
1:A:209:CYS:SG	1:A:224:ARG:HD3	2.58	0.44
1:D:167:ALA:O	1:D:171:VAL:HG23	2.17	0.44
1:C:255:TYR:O	1:C:259:ARG:HG2	2.18	0.44
1:C:304:SER:HA	1:C:310:LEU:HD23	1.99	0.44
1:A:289:PHE:HA	1:A:292:LEU:HD12	1.99	0.44
1:B:209:CYS:SG	1:B:224:ARG:HD3	2.58	0.44
1:B:419:ALA:HA	1:B:422:ARG:HD2	1.99	0.44
1:D:209:CYS:SG	1:D:224:ARG:HD3	2.58	0.44
1:B:255:TYR:O	1:B:259:ARG:HG2	2.18	0.44
1:C:289:PHE:HA	1:C:292:LEU:HD12	1.99	0.44
1:D:255:TYR:O	1:D:259:ARG:HG2	2.18	0.44
1:A:304:SER:HA	1:A:310:LEU:HD23	1.99	0.43

*Continued on next page...*

*Continued from previous page...*

Atom-1	Atom-2	Interatomic distance (Å)	Clash overlap (Å)
1:C:209:CYS:SG	1:C:224:ARG:HD3	2.58	0.43
1:A:290:VAL:O	1:A:294:VAL:HG23	2.19	0.43
1:C:243:GLU:OE2	1:C:305:ARG:NH1	2.43	0.43
1:D:289:PHE:HA	1:D:292:LEU:HD12	1.99	0.43
1:B:289:PHE:HA	1:B:292:LEU:HD12	1.99	0.43
1:D:304:SER:HA	1:D:310:LEU:HD23	1.99	0.43
1:C:290:VAL:O	1:C:294:VAL:HG23	2.19	0.43
1:A:255:TYR:O	1:A:259:ARG:HG2	2.18	0.43
1:A:212:SER:O	1:A:212:SER:OG	2.31	0.43
1:B:290:VAL:O	1:B:294:VAL:HG23	2.19	0.43
1:B:304:SER:HA	1:B:310:LEU:HD23	2.00	0.43
1:D:166:THR:HG23	1:D:170:ARG:HE	1.84	0.43
1:A:166:THR:HG23	1:A:170:ARG:HE	1.84	0.43
1:C:237:VAL:HG11	1:C:273:TYR:CD2	2.54	0.43
1:D:290:VAL:O	1:D:294:VAL:HG23	2.19	0.43
1:B:166:THR:HG23	1:B:170:ARG:HE	1.84	0.42
1:B:237:VAL:HG11	1:B:273:TYR:CD2	2.54	0.42
1:D:237:VAL:HG11	1:D:273:TYR:CD2	2.54	0.42
1:C:166:THR:HG23	1:C:170:ARG:HE	1.84	0.42
1:D:319:SER:OG	1:D:408:ASN:OD1	2.14	0.42
1:D:212:SER:O	1:D:212:SER:OG	2.31	0.42
1:A:209:CYS:HB3	1:A:221:CYS:SG	2.60	0.42
1:A:219:LEU:HD23	1:A:219:LEU:HA	1.91	0.42
1:A:332:THR:O	1:A:336:ILE:HG13	2.20	0.42
1:B:209:CYS:HB3	1:B:221:CYS:SG	2.60	0.42
1:B:332:THR:O	1:B:336:ILE:HG13	2.20	0.42
1:A:237:VAL:HG11	1:A:273:TYR:CD2	2.54	0.42
1:C:332:THR:O	1:C:336:ILE:HG13	2.20	0.41
1:D:254:ARG:O	1:D:258:VAL:HG23	2.20	0.41
1:D:332:THR:O	1:D:336:ILE:HG13	2.20	0.41
1:D:209:CYS:HB3	1:D:221:CYS:SG	2.60	0.41
1:C:209:CYS:HB3	1:C:221:CYS:SG	2.60	0.41
1:C:254:ARG:O	1:C:258:VAL:HG23	2.20	0.41
1:D:396:LEU:O	1:D:400:LEU:HG	2.21	0.41
1:C:335:ILE:HA	1:C:364:THR:HG21	2.02	0.41
1:A:254:ARG:O	1:A:258:VAL:HG23	2.20	0.41
1:B:335:ILE:HA	1:B:364:THR:HG21	2.02	0.41
1:B:254:ARG:O	1:B:258:VAL:HG23	2.20	0.41
1:A:335:ILE:HA	1:A:364:THR:HG21	2.02	0.41
1:A:338:PHE:HA	1:A:341:VAL:HG22	2.03	0.41
1:D:335:ILE:HA	1:D:364:THR:HG21	2.02	0.41

*Continued on next page...*

Continued from previous page...

Atom-1	Atom-2	Interatomic distance (Å)	Clash overlap (Å)
1:C:286:SER:HA	1:C:289:PHE:CE1	2.56	0.41
1:C:338:PHE:HA	1:C:341:VAL:HG22	2.03	0.41
1:C:396:LEU:O	1:C:400:LEU:HG	2.21	0.40
1:D:179:HIS:HA	1:D:185:LEU:HD12	2.03	0.40
1:A:396:LEU:O	1:A:400:LEU:HG	2.21	0.40
1:B:338:PHE:HA	1:B:341:VAL:HG22	2.03	0.40
1:B:396:LEU:O	1:B:400:LEU:HG	2.21	0.40
1:D:342:MET:HE1	1:D:378:PRO:HB3	2.04	0.40

There are no symmetry-related clashes.

## 5.3 Torsion angles [i](#)

### 5.3.1 Protein backbone [i](#)

In the following table, the Percentiles column shows the percent Ramachandran outliers of the chain as a percentile score with respect to all PDB entries followed by that with respect to all EM entries.

The Analysed column shows the number of residues for which the backbone conformation was analysed, and the total number of residues.

Mol	Chain	Analysed	Favoured	Allowed	Outliers	Percentiles	
1	A	257/524 (49%)	254 (99%)	3 (1%)	0	100	100
1	B	257/524 (49%)	254 (99%)	3 (1%)	0	100	100
1	C	257/524 (49%)	254 (99%)	3 (1%)	0	100	100
1	D	257/524 (49%)	254 (99%)	3 (1%)	0	100	100
All	All	1028/2096 (49%)	1016 (99%)	12 (1%)	0	100	100

There are no Ramachandran outliers to report.

### 5.3.2 Protein sidechains [i](#)

In the following table, the Percentiles column shows the percent sidechain outliers of the chain as a percentile score with respect to all PDB entries followed by that with respect to all EM entries.

The Analysed column shows the number of residues for which the sidechain conformation was analysed, and the total number of residues.

Mol	Chain	Analysed	Rotameric	Outliers	Percentiles	
1	A	211/447 (47%)	211 (100%)	0	100	100
1	B	211/447 (47%)	211 (100%)	0	100	100
1	C	211/447 (47%)	211 (100%)	0	100	100
1	D	211/447 (47%)	211 (100%)	0	100	100
All	All	844/1788 (47%)	844 (100%)	0	100	100

There are no protein residues with a non-rotameric sidechain to report.

Sometimes sidechains can be flipped to improve hydrogen bonding and reduce clashes. There are no such sidechains identified.

### 5.3.3 RNA [i](#)

There are no RNA molecules in this entry.

## 5.4 Non-standard residues in protein, DNA, RNA chains [i](#)

There are no non-standard protein/DNA/RNA residues in this entry.

## 5.5 Carbohydrates [i](#)

There are no monosaccharides in this entry.

## 5.6 Ligand geometry [i](#)

Of 4 ligands modelled in this entry, 4 are monoatomic - leaving 0 for Mogul analysis.

There are no bond length outliers.

There are no bond angle outliers.

There are no chirality outliers.

There are no torsion outliers.

There are no ring outliers.

No monomer is involved in short contacts.

## 5.7 Other polymers [i](#)

There are no such residues in this entry.

## 5.8 Polymer linkage issues

There are no chain breaks in this entry.

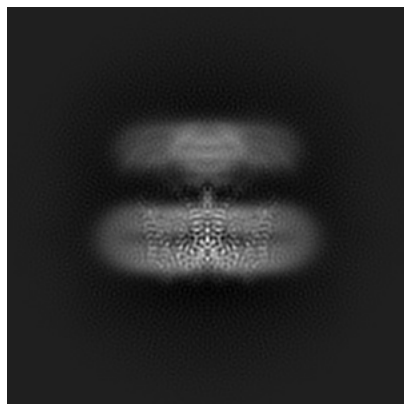
## 6 Map visualisation [i](#)

This section contains visualisations of the EMDB entry EMD-26578. These allow visual inspection of the internal detail of the map and identification of artifacts.

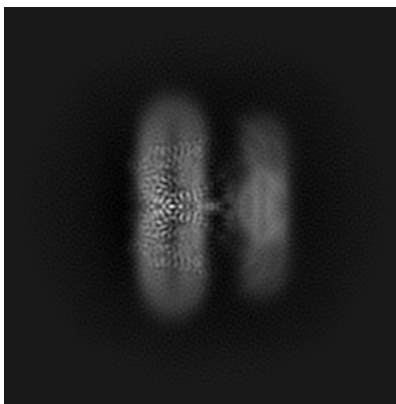
Images derived from a raw map, generated by summing the deposited half-maps, are presented below the corresponding image components of the primary map to allow further visual inspection and comparison with those of the primary map.

### 6.1 Orthogonal projections [i](#)

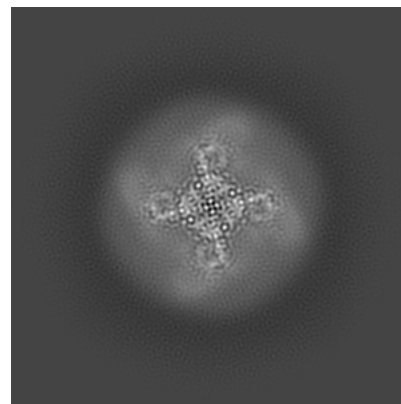
#### 6.1.1 Primary map



X

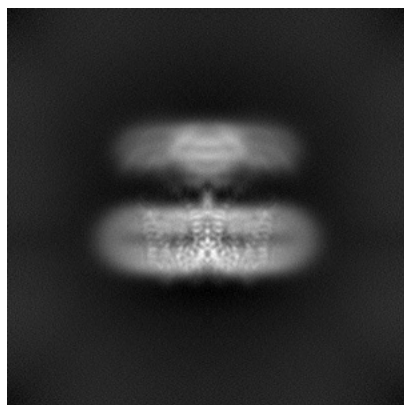


Y

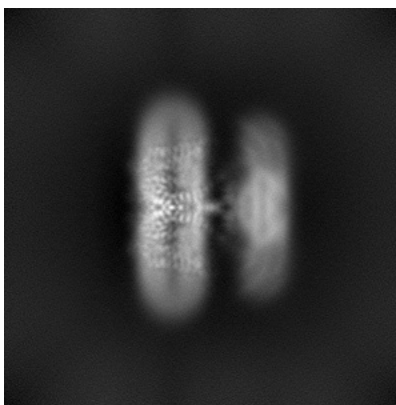


Z

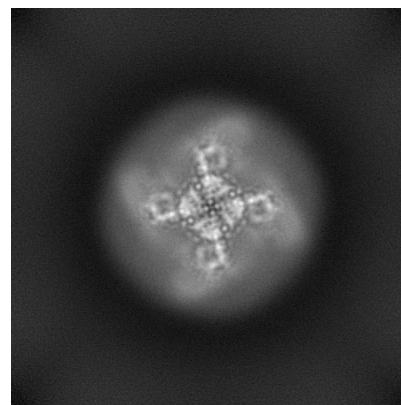
#### 6.1.2 Raw map



X



Y



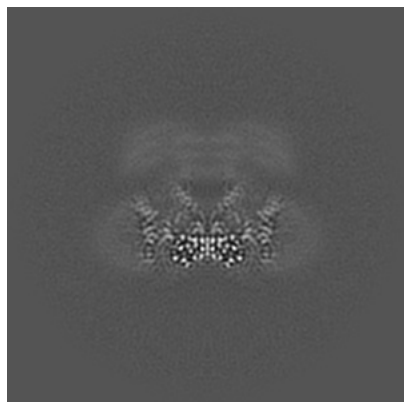
Z

The images above show the map projected in three orthogonal directions.

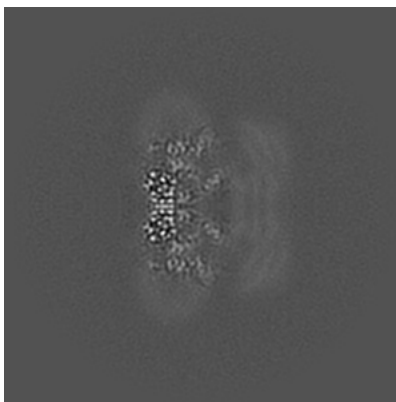


## 6.2 Central slices [i](#)

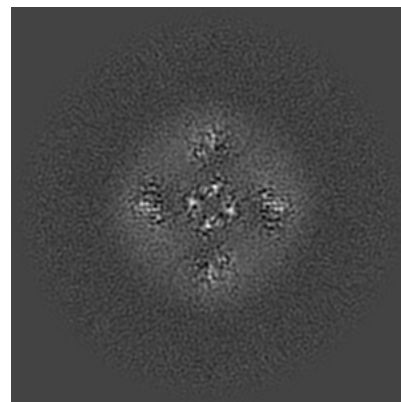
### 6.2.1 Primary map



X Index: 176

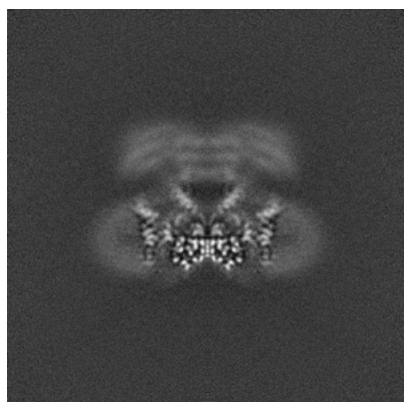


Y Index: 176

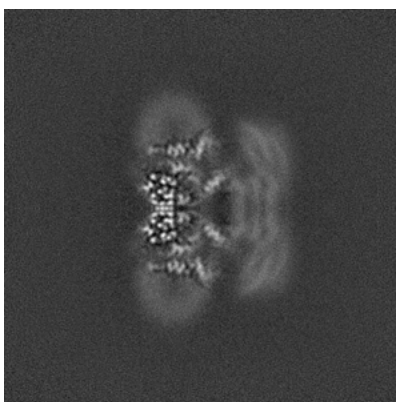


Z Index: 176

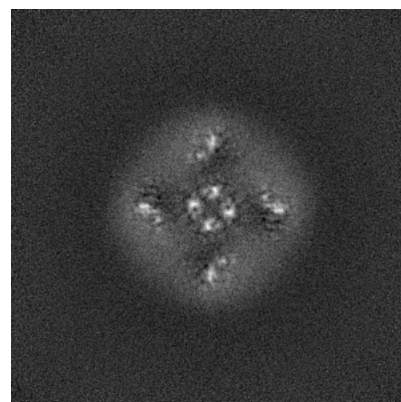
### 6.2.2 Raw map



X Index: 176



Y Index: 176



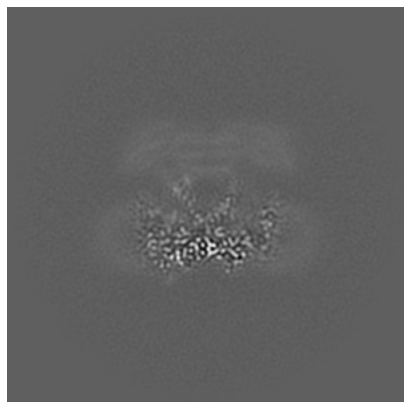
Z Index: 176

The images above show central slices of the map in three orthogonal directions.

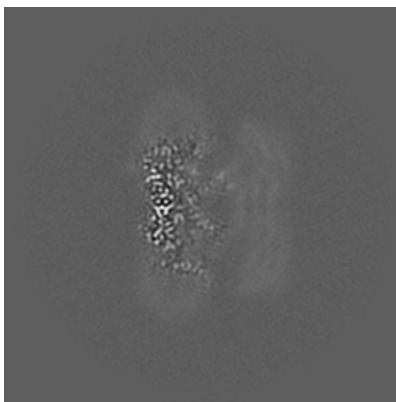


## 6.3 Largest variance slices [i](#)

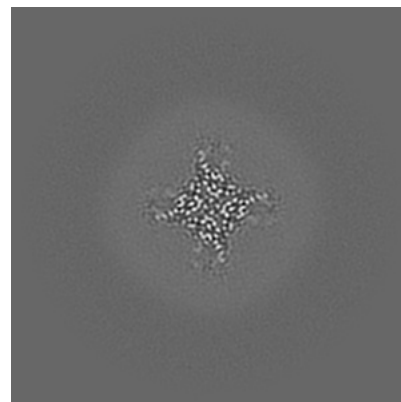
### 6.3.1 Primary map



X Index: 180

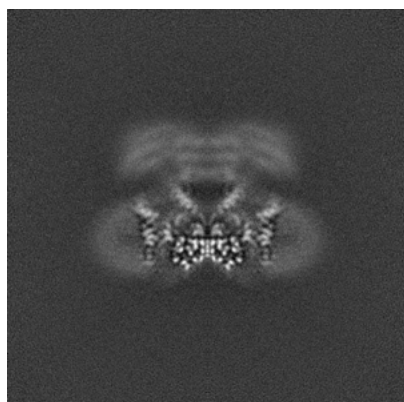


Y Index: 180

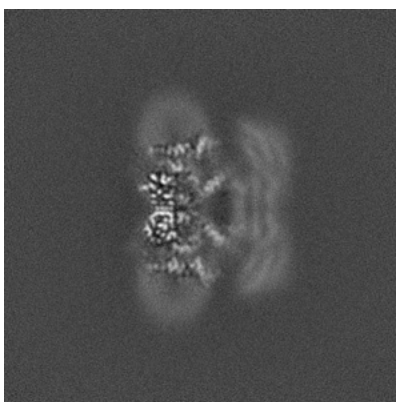


Z Index: 132

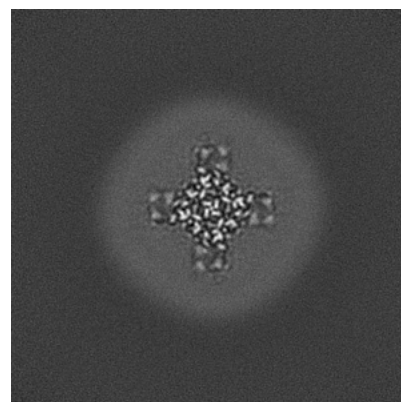
### 6.3.2 Raw map



X Index: 176



Y Index: 175

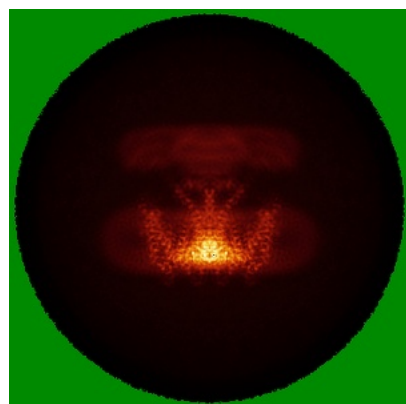


Z Index: 135

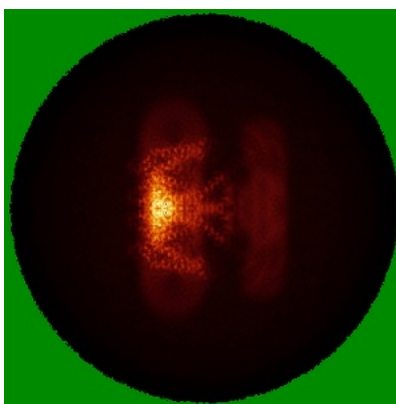
The images above show the largest variance slices of the map in three orthogonal directions.

## 6.4 Orthogonal standard-deviation projections (False-color) [i](#)

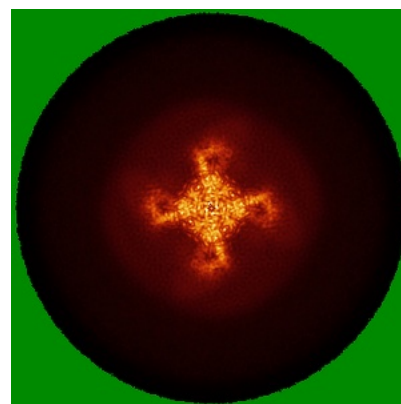
### 6.4.1 Primary map



X



Y

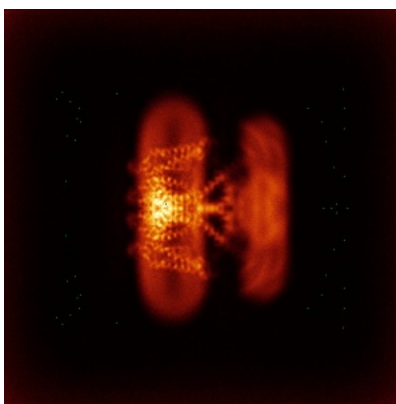


Z

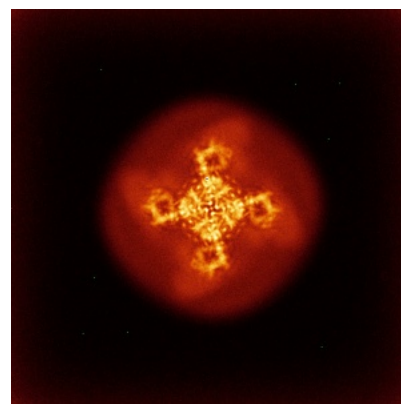
### 6.4.2 Raw map



X



Y

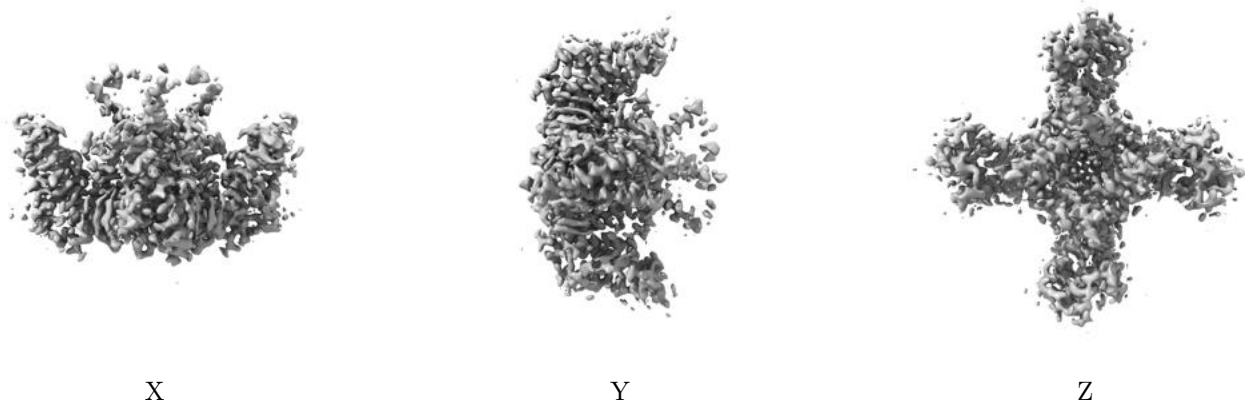


Z

The images above show the map standard deviation projections with false color in three orthogonal directions. Minimum values are shown in green, max in blue, and dark to light orange shades represent small to large values respectively.

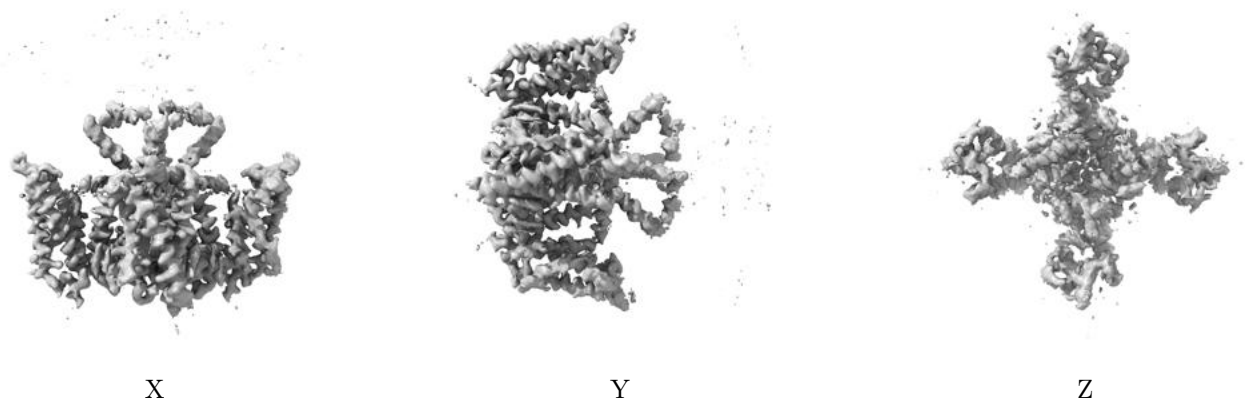
## 6.5 Orthogonal surface views [i](#)

### 6.5.1 Primary map



The images above show the 3D surface view of the map at the recommended contour level 0.5. These images, in conjunction with the slice images, may facilitate assessment of whether an appropriate contour level has been provided.

### 6.5.2 Raw map



These images show the 3D surface of the raw map. The raw map's contour level was selected so that its surface encloses the same volume as the primary map does at its recommended contour level.

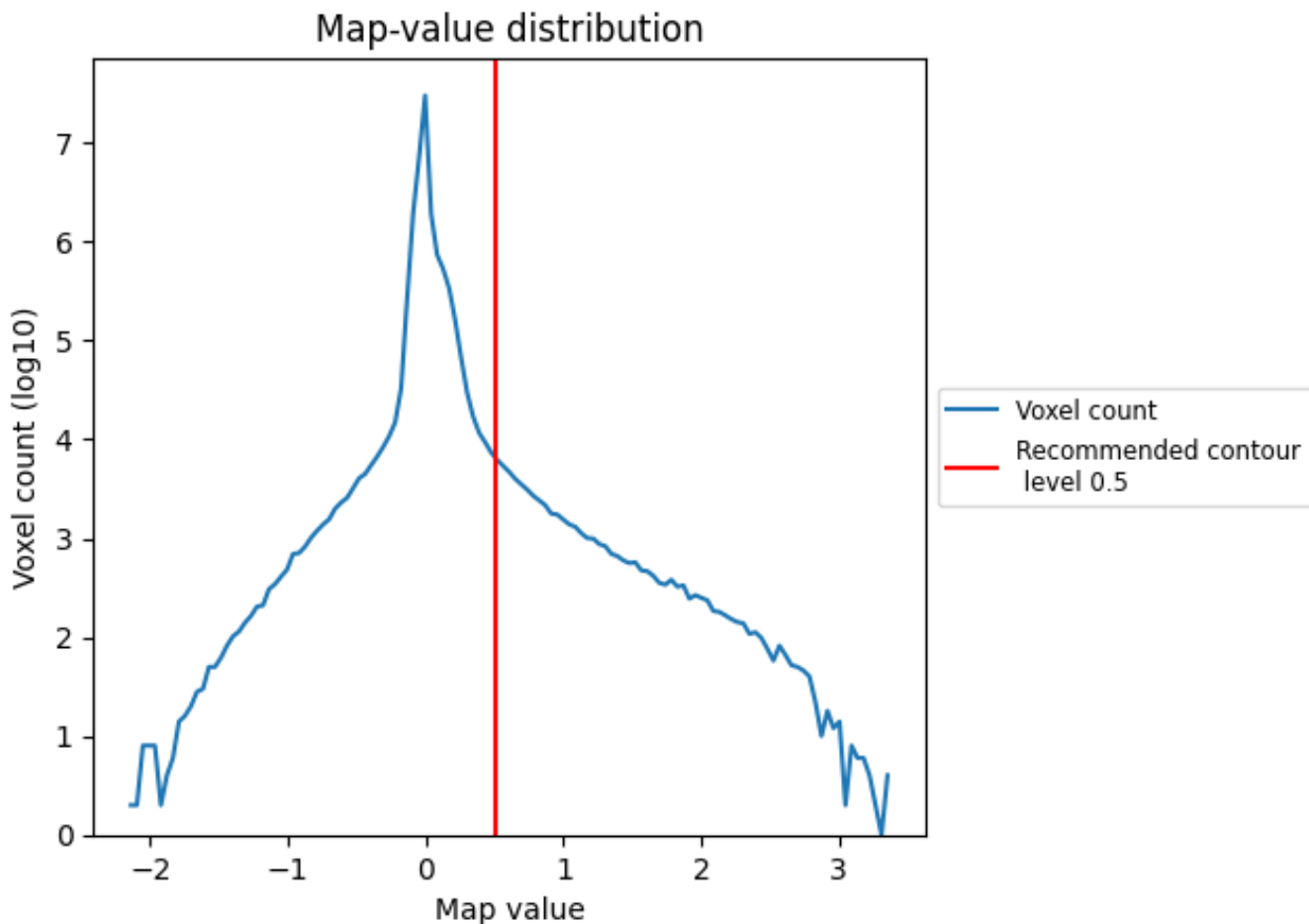
## 6.6 Mask visualisation [i](#)

This section was not generated. No masks/segmentation were deposited.

## 7 Map analysis [i](#)

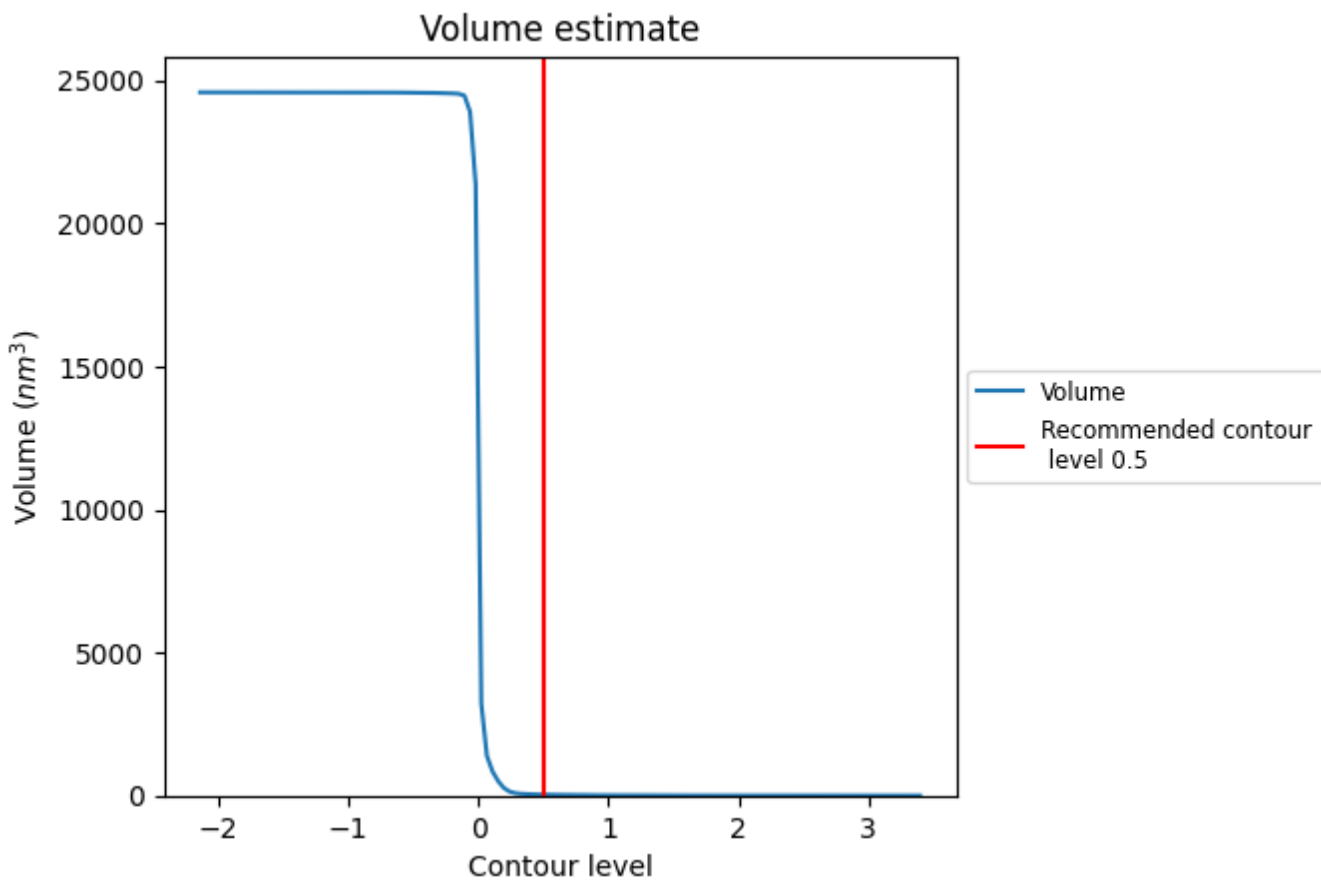
This section contains the results of statistical analysis of the map.

### 7.1 Map-value distribution [i](#)



The map-value distribution is plotted in 128 intervals along the x-axis. The y-axis is logarithmic. A spike in this graph at zero usually indicates that the volume has been masked.

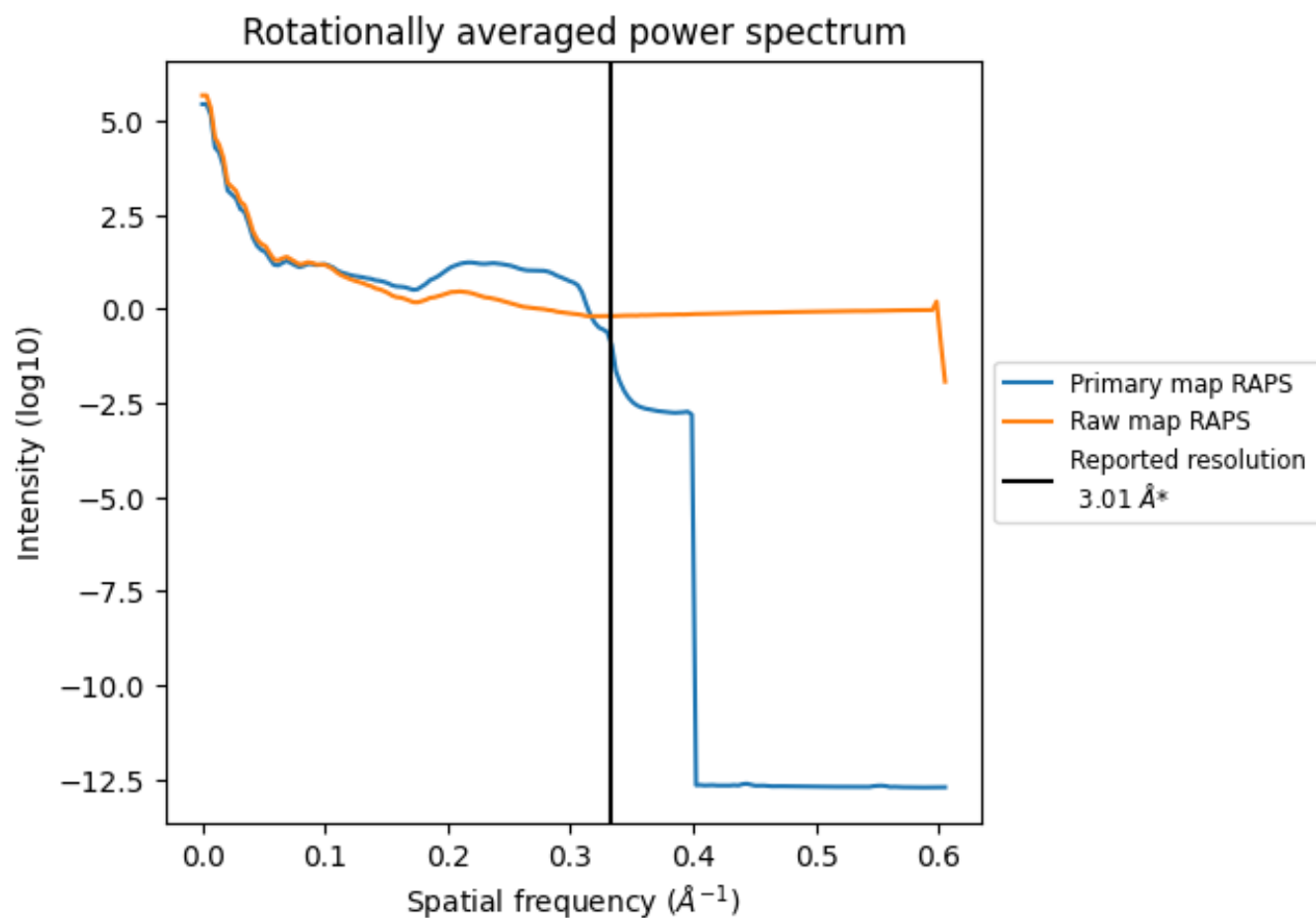
## 7.2 Volume estimate [i](#)



The volume at the recommended contour level is 33 nm<sup>3</sup>; this corresponds to an approximate mass of 30 kDa.

The volume estimate graph shows how the enclosed volume varies with the contour level. The recommended contour level is shown as a vertical line and the intersection between the line and the curve gives the volume of the enclosed surface at the given level.

### 7.3 Rotationally averaged power spectrum [i](#)

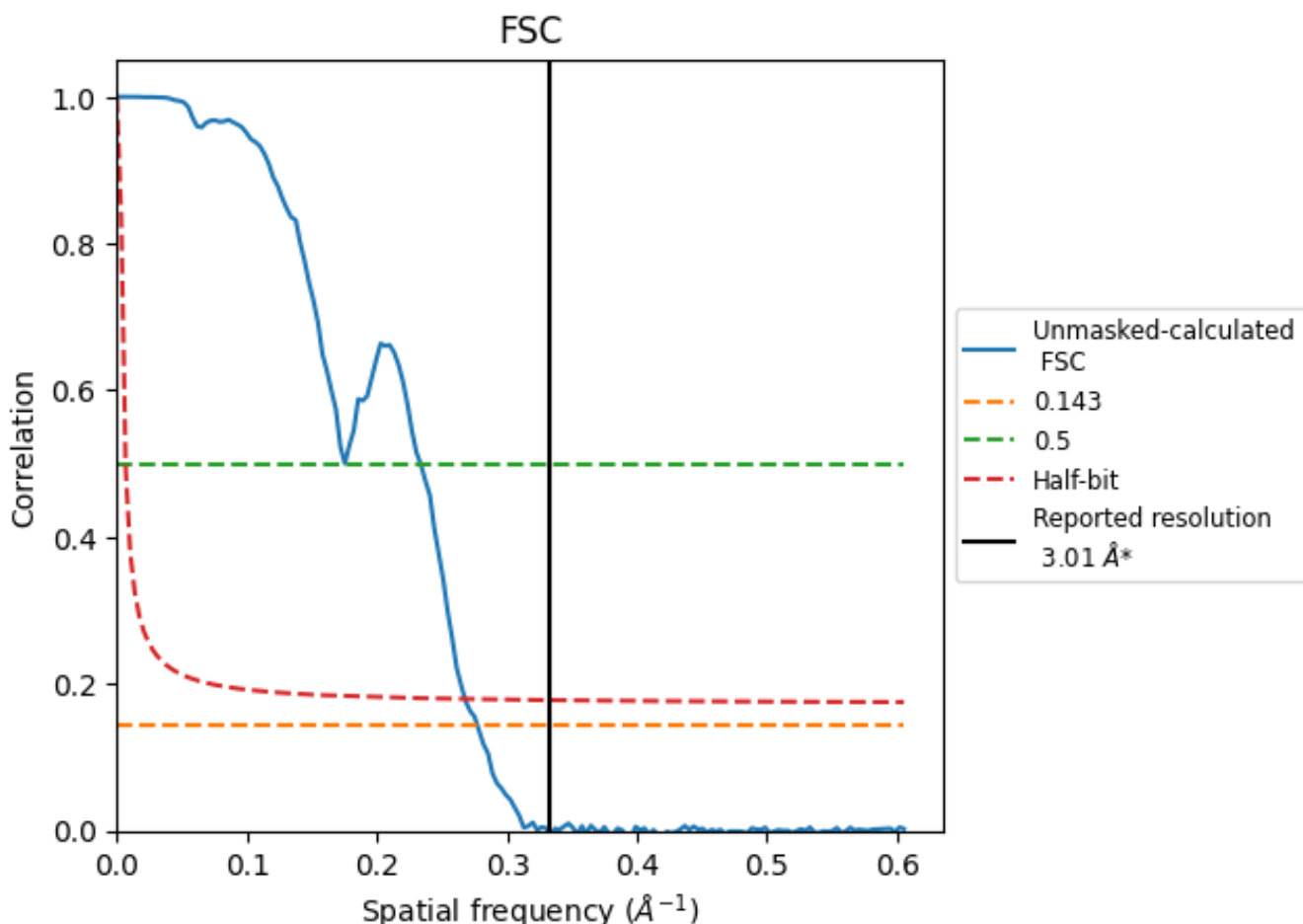


\*Reported resolution corresponds to spatial frequency of 0.332 Å<sup>-1</sup>

## 8 Fourier-Shell correlation [i](#)

Fourier-Shell Correlation (FSC) is the most commonly used method to estimate the resolution of single-particle and subtomogram-averaged maps. The shape of the curve depends on the imposed symmetry, mask and whether or not the two 3D reconstructions used were processed from a common reference. The reported resolution is shown as a black line. A curve is displayed for the half-bit criterion in addition to lines showing the 0.143 gold standard cut-off and 0.5 cut-off.

### 8.1 FSC [i](#)



\*Reported resolution corresponds to spatial frequency of 0.332 Å<sup>-1</sup>

## 8.2 Resolution estimates [i](#)

Resolution estimate (Å)	Estimation criterion (FSC cut-off)		
	0.143	0.5	Half-bit
Reported by author	3.01	-	-
Author-provided FSC curve	-	-	-
Unmasked-calculated*	3.61	4.28	3.73

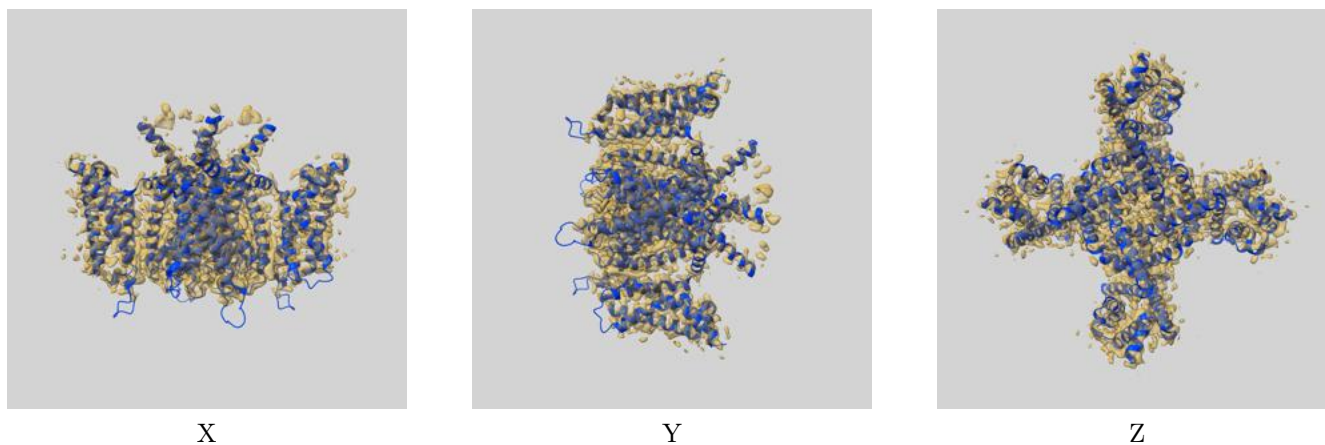
\*Resolution estimate based on FSC curve calculated by comparison of deposited half-maps. The value from deposited half-maps intersecting FSC 0.143 CUT-OFF 3.61 differs from the reported value 3.01 by more than 10 %



## 9 Map-model fit [i](#)

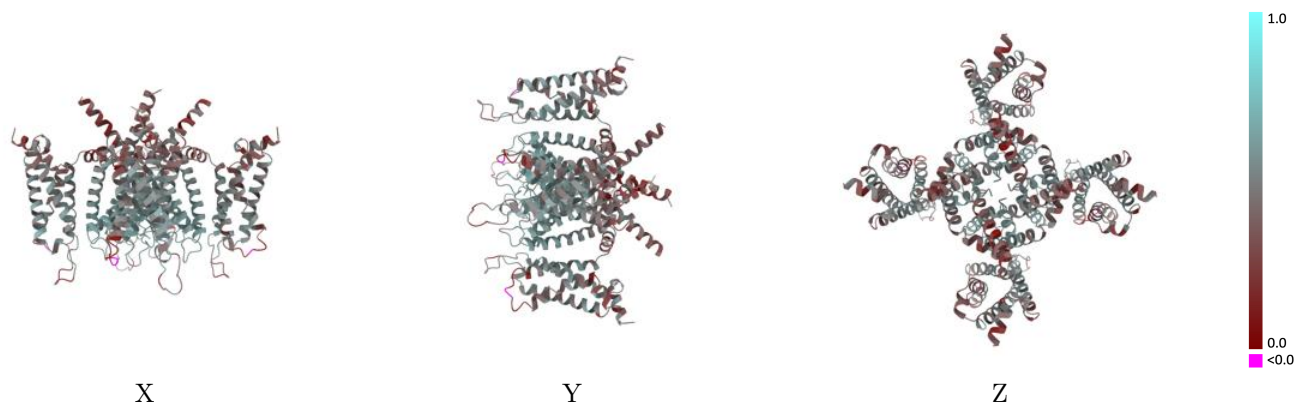
This section contains information regarding the fit between EMDB map EMD-26578 and PDB model 7UKE. Per-residue inclusion information can be found in section 3 on page 4.

### 9.1 Map-model overlay [i](#)



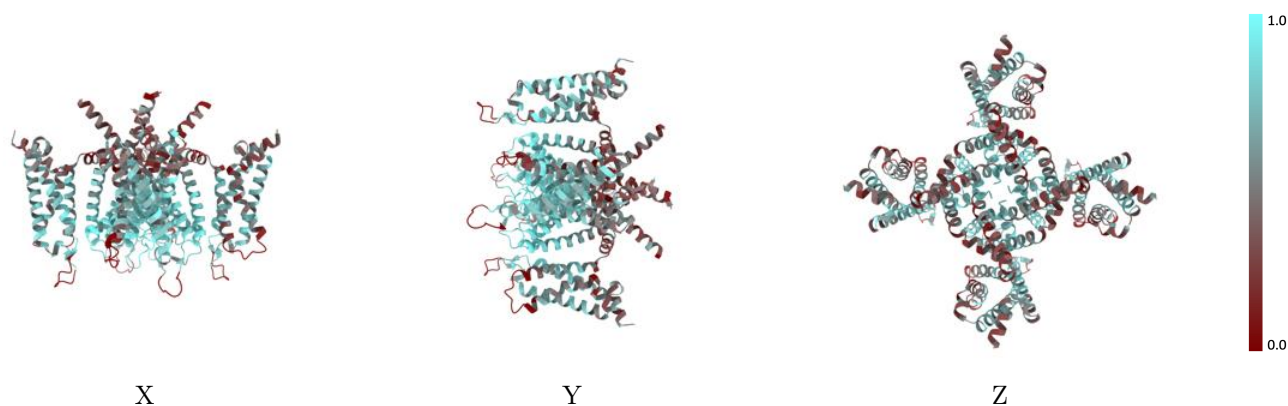
The images above show the 3D surface view of the map at the recommended contour level 0.5 at 50% transparency in yellow overlaid with a ribbon representation of the model coloured in blue. These images allow for the visual assessment of the quality of fit between the atomic model and the map.

## 9.2 Q-score mapped to coordinate model [\(i\)](#)



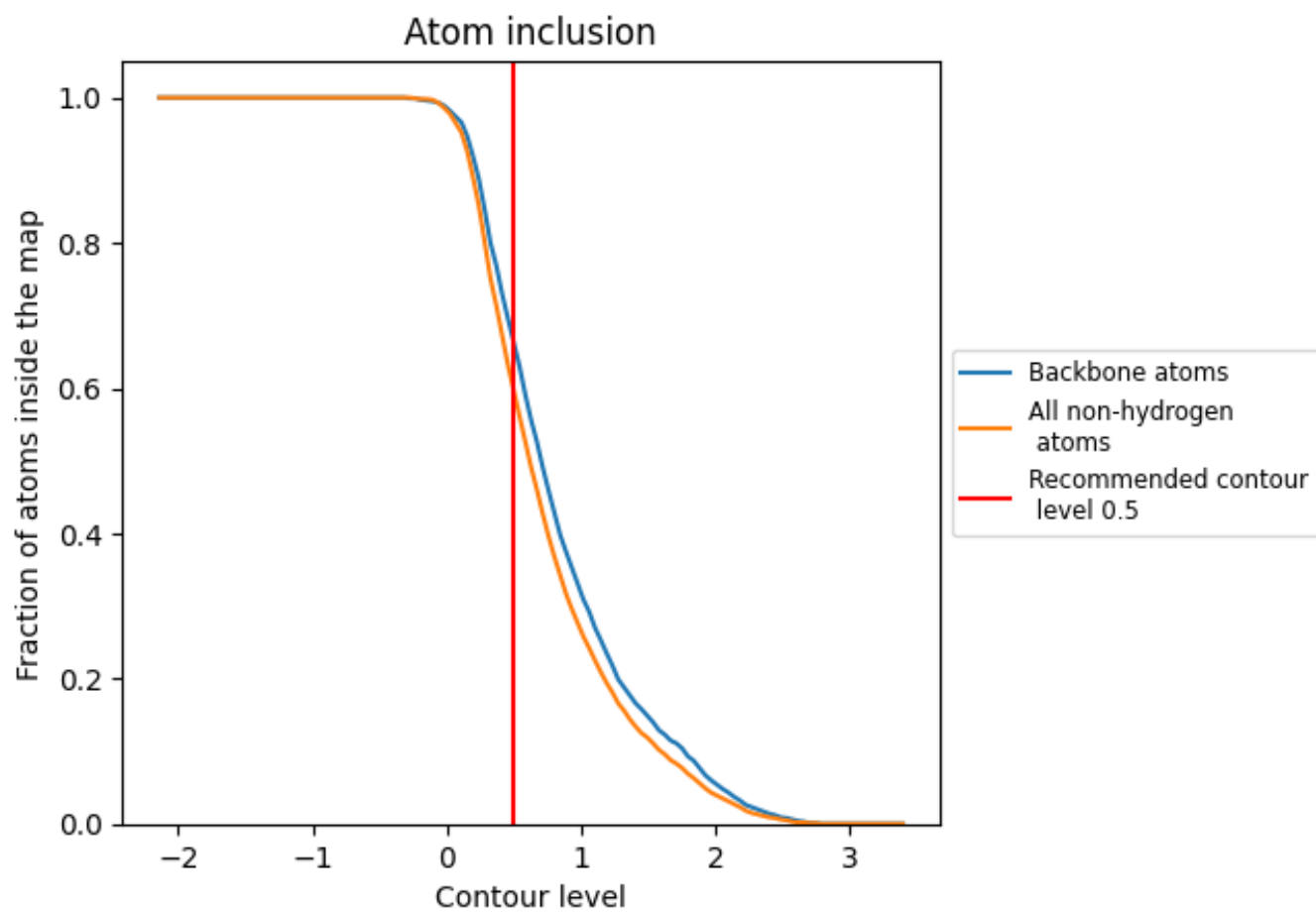
The images above show the model with each residue coloured according to its Q-score. This shows their resolvability in the map with higher Q-score values reflecting better resolvability. Please note: Q-score is calculating the resolvability of atoms, and thus high values are only expected at resolutions at which atoms can be resolved. Low Q-score values may therefore be expected for many entries.

## 9.3 Atom inclusion mapped to coordinate model [\(i\)](#)



The images above show the model with each residue coloured according to its atom inclusion. This shows to what extent they are inside the map at the recommended contour level (0.5).











## 9.4 Atom inclusion [i](#)



At the recommended contour level, 66% of all backbone atoms, 60% of all non-hydrogen atoms, are inside the map.

## 9.5 Map-model fit summary [i](#)

The table lists the average atom inclusion at the recommended contour level (0.5) and Q-score for the entire model and for each chain.

Chain	Atom inclusion	Q-score
All	 0.5950	 0.4600
A	 0.5920	 0.4530
B	 0.5970	 0.4690
C	 0.5930	 0.4500
D	 0.5980	 0.4690

