



Full wwPDB X-ray Structure Validation Report ⓘ

Mar 8, 2018 – 05:21 pm GMT

PDB ID : 3ULV
Title : Structure of quaternary complex of human TLR3ecd with three Fabs (Form2)
Authors : Luo, J.; Gilliland, G.L.; Obmolova, O.; Malia, T.; Teplyakov, A.
Deposited on : 2011-11-11
Resolution : 3.52 Å(reported)

This is a Full wwPDB X-ray Structure Validation Report for a publicly released PDB entry.

We welcome your comments at validation@mail.wwpdb.org

A user guide is available at

<https://www.wwpdb.org/validation/2017/XrayValidationReportHelp>

with specific help available everywhere you see the ⓘ symbol.

The following versions of software and data (see [references ⓘ](#)) were used in the production of this report:

MolProbity : 4.02b-467
Mogul : 1.7.3 (157068), CSD as539be (2018)
Xtriage (Phenix) : 1.13
EDS : trunk30967
Percentile statistics : 20171227.v01 (using entries in the PDB archive December 27th 2017)
Refmac : 5.8.0158
CCP4 : 7.0 (Gargrove)
Ideal geometry (proteins) : Engh & Huber (2001)
Ideal geometry (DNA, RNA) : Parkinson et al. (1996)
Validation Pipeline (wwPDB-VP) : trunk30967

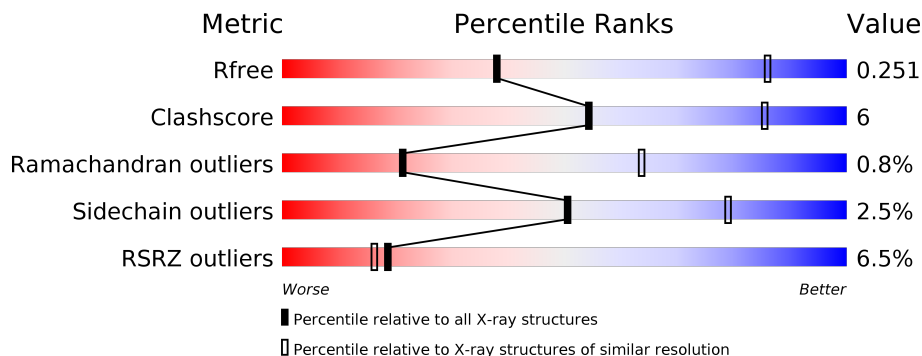
1 Overall quality at a glance

The following experimental techniques were used to determine the structure:

X-RAY DIFFRACTION

The reported resolution of this entry is 3.52 Å.

Percentile scores (ranging between 0-100) for global validation metrics of the entry are shown in the following graphic. The table shows the number of entries on which the scores are based.



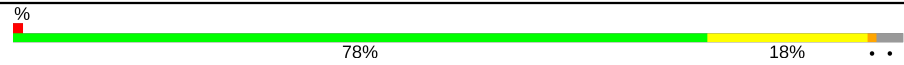
Metric	Whole archive (#Entries)	Similar resolution (#Entries, resolution range(Å))
R_{free}	111664	1052 (3.62-3.42)
Clashscore	122126	1048 (3.60-3.44)
Ramachandran outliers	120053	1014 (3.60-3.44)
Sidechain outliers	120020	1015 (3.60-3.44)
RSRZ outliers	108989	1353 (3.64-3.40)

The table below summarises the geometric issues observed across the polymeric chains and their fit to the electron density. The red, orange, yellow and green segments on the lower bar indicate the fraction of residues that contain outliers for ≥ 3 , 2, 1 and 0 types of geometric quality criteria. A grey segment represents the fraction of residues that are not modelled. The numeric value for each fraction is indicated below the corresponding segment, with a dot representing fractions $\leq 5\%$. The upper red bar (where present) indicates the fraction of residues that have poor fit to the electron density. The numeric value is given above the bar.

Mol	Chain	Length	Quality of chain
1	A	694	 3% 79% 17%
2	L	214	 1% 84% 15%
3	H	225	 8% 84% 16%
4	C	213	 24% 79% 18%
5	D	226	 17% 76% 23%
6	E	215	 87% 12%

Continued on next page...

Continued from previous page...

Mol	Chain	Length	Quality of chain
7	F	223	

The following table lists non-polymeric compounds, carbohydrate monomers and non-standard residues in protein, DNA, RNA chains that are outliers for geometric or electron-density-fit criteria:

Mol	Type	Chain	Res	Chirality	Geometry	Clashes	Electron density
8	NAG	A	801	-	-	-	X

2 Entry composition i

There are 11 unique types of molecules in this entry. The entry contains 15591 atoms, of which 0 are hydrogens and 0 are deuteriums.

In the tables below, the ZeroOcc column contains the number of atoms modelled with zero occupancy, the AltConf column contains the number of residues with at least one atom in alternate conformation and the Trace column contains the number of residues modelled with at most 2 atoms.

- Molecule 1 is a protein called Toll-like receptor 3.

Mol	Chain	Residues	Atoms					ZeroOcc	AltConf	Trace
			Total	C	N	O	S			
1	A	668	5354	3423	908	1005	18	0	0	0

There are 13 discrepancies between the modelled and reference sequences:

Chain	Residue	Modelled	Actual	Comment	Reference
A	17	ALA	-	CLONING ARTIFACT	UNP O15455
A	18	ASP	-	CLONING ARTIFACT	UNP O15455
A	19	LEU	-	CLONING ARTIFACT	UNP O15455
A	20	GLY	-	CLONING ARTIFACT	UNP O15455
A	21	SER	-	CLONING ARTIFACT	UNP O15455
A	703	ALA	-	EXPRESSION TAG	UNP O15455
A	704	SER	-	EXPRESSION TAG	UNP O15455
A	705	HIS	-	EXPRESSION TAG	UNP O15455
A	706	HIS	-	EXPRESSION TAG	UNP O15455
A	707	HIS	-	EXPRESSION TAG	UNP O15455
A	708	HIS	-	EXPRESSION TAG	UNP O15455
A	709	HIS	-	EXPRESSION TAG	UNP O15455
A	710	HIS	-	EXPRESSION TAG	UNP O15455

- Molecule 2 is a protein called Fab15 light chain.

Mol	Chain	Residues	Atoms					ZeroOcc	AltConf	Trace
			Total	C	N	O	S			
2	L	214	1633	1020	273	334	6	0	0	0

- Molecule 3 is a protein called Fab15 heavy chain.

Mol	Chain	Residues	Atoms					ZeroOcc	AltConf	Trace
			Total	C	N	O	S			
3	H	225	1720	1088	286	337	9	0	0	0

- Molecule 4 is a protein called Fab12 light chain.

Mol	Chain	Residues	Atoms					ZeroOcc	AltConf	Trace
			Total	C	N	O	S			
4	C	210	1579	987	260	328	4	0	0	0

- Molecule 5 is a protein called Fab12 heavy chain.

Mol	Chain	Residues	Atoms					ZeroOcc	AltConf	Trace
			Total	C	N	O	S			
5	D	224	1712	1080	294	333	5	0	0	0

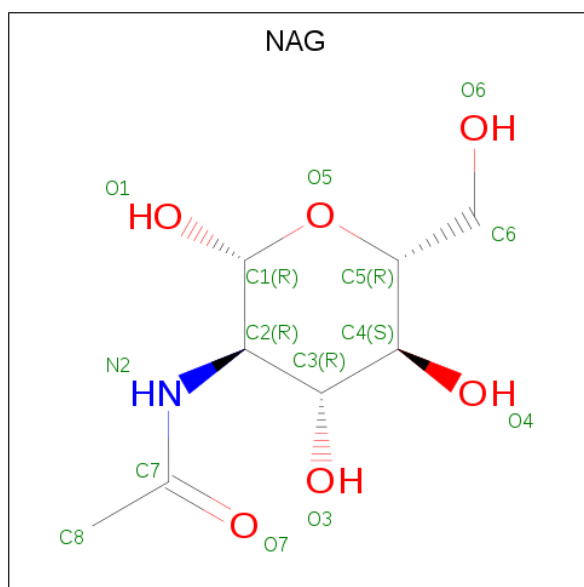
- Molecule 6 is a protein called Fab1068 light chain.

Mol	Chain	Residues	Atoms					ZeroOcc	AltConf	Trace
			Total	C	N	O	S			
6	E	215	1661	1040	279	336	6	0	0	0

- Molecule 7 is a protein called Fab1068 heavy chain.

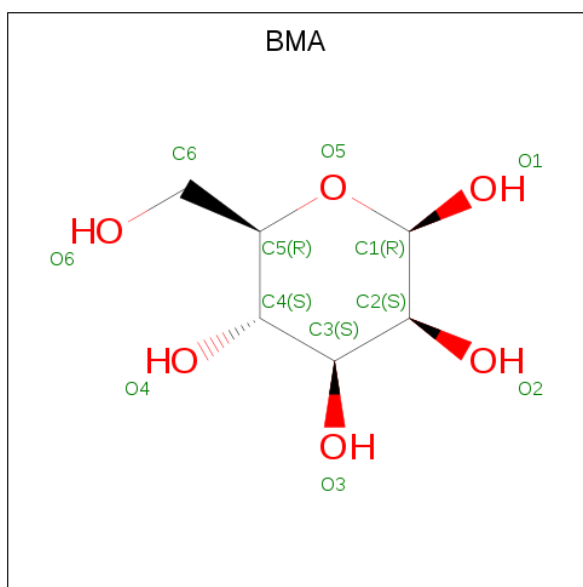
Mol	Chain	Residues	Atoms					ZeroOcc	AltConf	Trace
			Total	C	N	O	S			
7	F	217	1656	1050	279	320	7	0	0	0

- Molecule 8 is N-ACETYL-D-GLUCOSAMINE (three-letter code: NAG) (formula: C₈H₁₅NO₆).



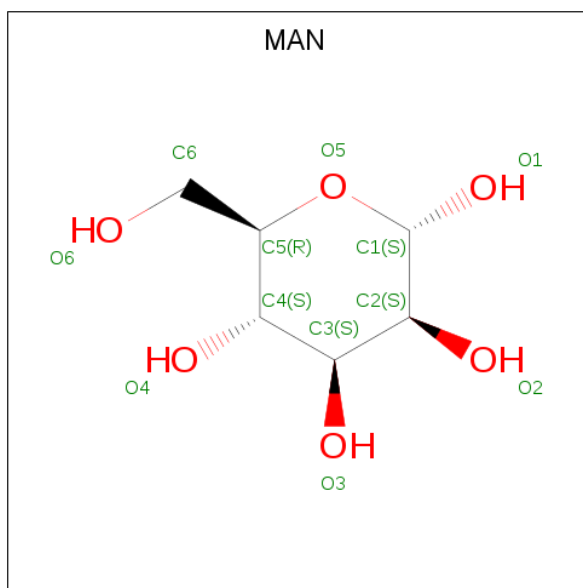
Mol	Chain	Residues	Atoms				ZeroOcc	AltConf
8	A	1	Total 14	C 8	N 1	O 5	0	0
8	A	1	Total 14	C 8	N 1	O 5	0	0
8	A	1	Total 14	C 8	N 1	O 5	0	0
8	A	1	Total 14	C 8	N 1	O 5	0	0
8	A	1	Total 14	C 8	N 1	O 5	0	0
8	A	1	Total 14	C 8	N 1	O 5	0	0
8	A	1	Total 14	C 8	N 1	O 5	0	0
8	A	1	Total 14	C 8	N 1	O 5	0	0
8	A	1	Total 14	C 8	N 1	O 5	0	0
8	A	1	Total 14	C 8	N 1	O 5	0	0
8	A	1	Total 14	C 8	N 1	O 5	0	0
8	A	1	Total 14	C 8	N 1	O 5	0	0
8	A	1	Total 14	C 8	N 1	O 5	0	0
8	A	1	Total 14	C 8	N 1	O 5	0	0
8	A	1	Total 14	C 8	N 1	O 5	0	0
8	A	1	Total 14	C 8	N 1	O 5	0	0
8	A	1	Total 14	C 8	N 1	O 5	0	0
8	A	1	Total 14	C 8	N 1	O 5	0	0
8	A	1	Total 14	C 8	N 1	O 5	0	0

- Molecule 9 is BETA-D-MANNOSE (three-letter code: BMA) (formula: C₆H₁₂O₆).



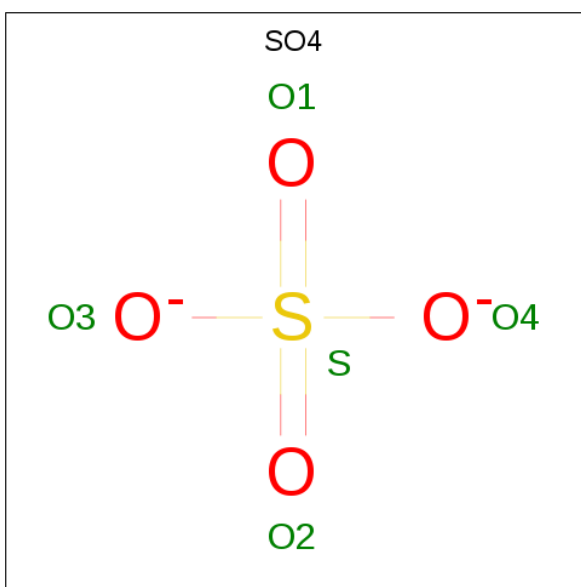
Mol	Chain	Residues	Atoms			ZeroOcc	AltConf
9	A	1	Total	C	O	0	0
			11	6	5		

- Molecule 10 is ALPHA-D-MANNOSE (three-letter code: MAN) (formula: C₆H₁₂O₆).



Mol	Chain	Residues	Atoms			ZeroOcc	AltConf
10	A	1	Total	C	O	0	0
			11	6	5		

- Molecule 11 is SULFATE ION (three-letter code: SO4) (formula: O₄S).

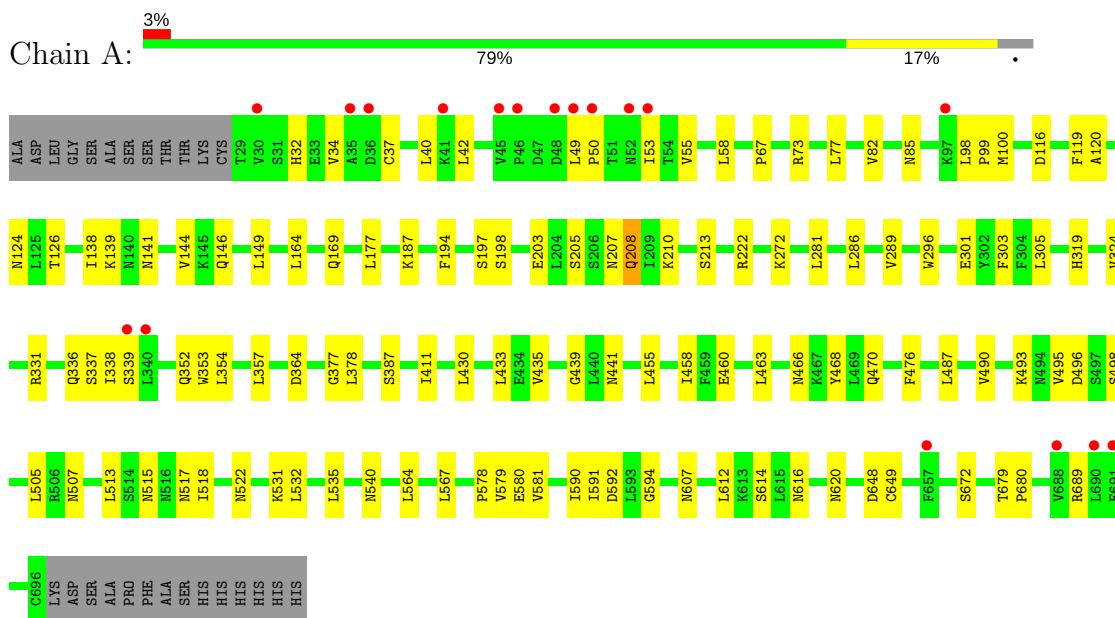


Mol	Chain	Residues	Atoms			ZeroOcc	AltConf
11	A	1	Total	O	S	0	0
			5	4	1		
11	A	1	Total	O	S	0	0
			5	4	1		
11	A	1	Total	O	S	0	0
			5	4	1		
11	E	1	Total	O	S	0	0
			5	4	1		
11	E	1	Total	O	S	0	0
			5	4	1		

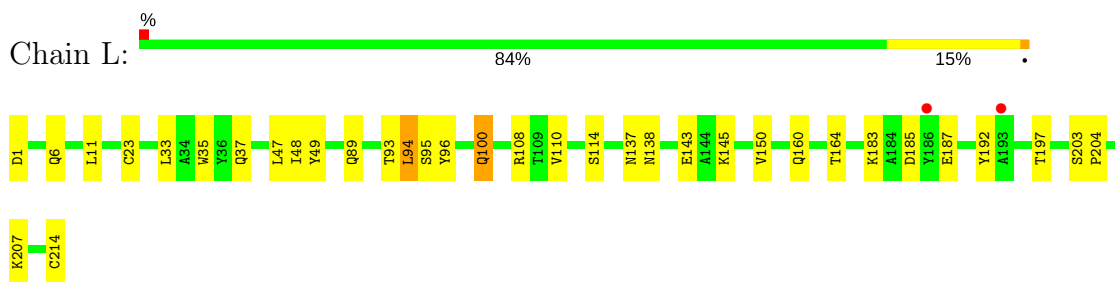
3 Residue-property plots [i](#)

These plots are drawn for all protein, RNA and DNA chains in the entry. The first graphic for a chain summarises the proportions of the various outlier classes displayed in the second graphic. The second graphic shows the sequence view annotated by issues in geometry and electron density. Residues are color-coded according to the number of geometric quality criteria for which they contain at least one outlier: green = 0, yellow = 1, orange = 2 and red = 3 or more. A red dot above a residue indicates a poor fit to the electron density ($RSRZ > 2$). Stretches of 2 or more consecutive residues without any outlier are shown as a green connector. Residues present in the sample, but not in the model, are shown in grey.

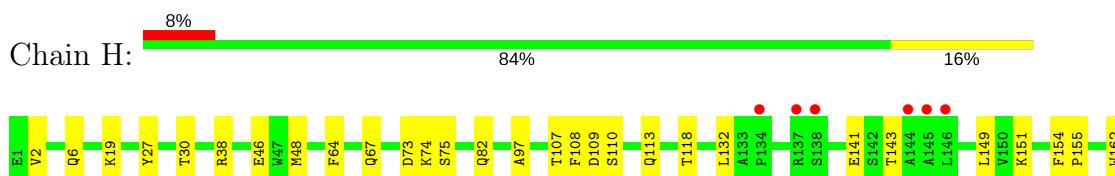
- Molecule 1: Toll-like receptor 3



- Molecule 2: Fab15 light chain



- Molecule 3: Fab15 heavy chain



4 Data and refinement statistics i

Property	Value	Source
Space group	C 1 2 1	Depositor
Cell constants a, b, c, α , β , γ	363.30Å 131.66Å 154.20Å 90.00° 91.35° 90.00°	Depositor
Resolution (Å)	48.45 – 3.52 48.57 – 3.52	Depositor EDS
% Data completeness (in resolution range)	53.5 (48.45-3.52) 53.6 (48.57-3.52)	Depositor EDS
R_{merge}	0.21	Depositor
R_{sym}	(Not available)	Depositor
$\langle I/\sigma(I) \rangle$ ¹	1.30 (at 3.48Å)	Xtrriage
Refinement program	PHENIX (phenix.refine: dev_896)	Depositor
R, R_{free}	0.231 , 0.253 0.228 , 0.251	Depositor DCC
R_{free} test set	2398 reflections (4.97%)	wwPDB-VP
Wilson B-factor (Å ²)	55.7	Xtrriage
Anisotropy	0.043	Xtrriage
Bulk solvent k_{sol} (e/Å ³), B_{sol} (Å ²)	0.33 , 78.3	EDS
L-test for twinning ²	$\langle L \rangle = 0.49$, $\langle L^2 \rangle = 0.32$	Xtrriage
Estimated twinning fraction	0.000 for -h,-k,l	Xtrriage
F_o, F_c correlation	0.88	EDS
Total number of atoms	15591	wwPDB-VP
Average B, all atoms (Å ²)	70.0	wwPDB-VP

Xtrriage's analysis on translational NCS is as follows: *The largest off-origin peak in the Patterson function is 3.99% of the height of the origin peak. No significant pseudotranslation is detected.*

¹Intensities estimated from amplitudes.

²Theoretical values of $\langle |L| \rangle$, $\langle L^2 \rangle$ for acentric reflections are 0.5, 0.333 respectively for untwinned datasets, and 0.375, 0.2 for perfectly twinned datasets.

5 Model quality [i](#)

5.1 Standard geometry [i](#)

Bond lengths and bond angles in the following residue types are not validated in this section: SO4, BMA, NAG, MAN

The Z score for a bond length (or angle) is the number of standard deviations the observed value is removed from the expected value. A bond length (or angle) with $|Z| > 5$ is considered an outlier worth inspection. RMSZ is the root-mean-square of all Z scores of the bond lengths (or angles).

Mol	Chain	Bond lengths		Bond angles	
		RMSZ	# Z >5	RMSZ	# Z >5
1	A	0.21	0/5467	0.37	0/7422
2	L	0.21	0/1666	0.39	0/2259
3	H	0.20	0/1770	0.38	0/2412
4	C	0.21	0/1620	0.41	0/2217
5	D	0.21	0/1759	0.40	0/2405
6	E	0.22	0/1699	0.39	0/2304
7	F	0.21	0/1699	0.41	0/2320
All	All	0.21	0/15680	0.39	0/21339

There are no bond length outliers.

There are no bond angle outliers.

There are no chirality outliers.

There are no planarity outliers.

5.2 Too-close contacts [i](#)

In the following table, the Non-H and H(model) columns list the number of non-hydrogen atoms and hydrogen atoms in the chain respectively. The H(added) column lists the number of hydrogen atoms added and optimized by MolProbity. The Clashes column lists the number of clashes within the asymmetric unit, whereas Symm-Clashes lists symmetry related clashes.

Mol	Chain	Non-H	H(model)	H(added)	Clashes	Symm-Clashes
1	A	5354	0	5352	63	0
2	L	1633	0	1591	16	0
3	H	1720	0	1646	18	0
4	C	1579	0	1501	24	0
5	D	1712	0	1671	29	0
6	E	1661	0	1598	10	0

Continued on next page...

Continued from previous page...

Mol	Chain	Non-H	H(model)	H(added)	Clashes	Symm-Clashes
7	F	1656	0	1626	22	0
8	A	224	0	202	5	0
9	A	11	0	9	1	0
10	A	11	0	10	0	0
11	A	20	0	0	0	0
11	E	10	0	0	0	0
All	All	15591	0	15206	175	0

The all-atom clashscore is defined as the number of clashes found per 1000 atoms (including hydrogen atoms). The all-atom clashscore for this structure is 6.

All (175) close contacts within the same asymmetric unit are listed below, sorted by their clash magnitude.

Atom-1	Atom-2	Interatomic distance (Å)	Clash overlap (Å)
1:A:579:VAL:HG13	1:A:580:GLU:HG2	1.68	0.75
5:D:39:ILE:HG22	5:D:49:TRP:HA	1.74	0.70
1:A:67:PRO:HG2	8:A:802:NAG:HN2	1.59	0.68
1:A:138:ILE:HD12	1:A:164:LEU:HD22	1.75	0.67
1:A:119:PHE:O	1:A:146:GLN:NE2	2.30	0.65
1:A:672:SER:HB3	1:A:689:ARG:HH11	1.61	0.65
7:F:14:PRO:HD2	7:F:119:ALA:HB2	1.78	0.64
3:H:30:THR:HG21	3:H:74:LYS:HE3	1.79	0.64
5:D:35:ALA:HB3	5:D:102:TYR:HB2	1.79	0.62
1:A:100:MET:HG2	8:A:803:NAG:H61	1.82	0.62
1:A:177:LEU:HA	1:A:203:GLU:HB3	1.80	0.62
4:C:121:PRO:HG3	4:C:132:THR:H	1.64	0.62
1:A:387:SER:HG	8:A:813:NAG:HO6	1.48	0.62
6:E:138:ASN:OD1	6:E:139:ASN:ND2	2.31	0.62
1:A:144:VAL:HA	1:A:169:GLN:HG3	1.82	0.61
4:C:90:TYR:HA	4:C:96:GLN:H	1.64	0.61
4:C:20:ILE:HD12	4:C:72:LEU:HD23	1.83	0.61
2:L:145:LYS:HB3	2:L:197:THR:HB	1.82	0.61
5:D:206:ASN:ND2	5:D:217:ASP:OD2	2.34	0.60
5:D:168:LEU:HD21	5:D:191:VAL:HG21	1.84	0.60
4:C:34:TRP:HB2	4:C:47:ILE:HB	1.83	0.60
1:A:517:ASN:HA	1:A:540:ASN:HA	1.83	0.60
7:F:104:THR:O	7:F:104:THR:OG1	2.20	0.59
5:D:13:LYS:HG2	5:D:122:SER:HA	1.85	0.58
2:L:207:LYS:NZ	3:H:141:GLU:OE2	2.37	0.58
6:E:90:HIS:CD2	6:E:97:THR:H	2.22	0.57
2:L:183:LYS:NZ	2:L:187:GLU:OE2	2.36	0.57

Continued on next page...

Continued from previous page...

Atom-1	Atom-2	Interatomic distance (Å)	Clash overlap (Å)
4:C:22:CYS:HB3	4:C:70:ALA:HB3	1.87	0.57
4:C:120:PRO:HG3	4:C:207:VAL:HG11	1.87	0.57
1:A:470:GLN:HA	1:A:493:LYS:HB2	1.86	0.56
3:H:132:LEU:HD21	3:H:149:LEU:HB2	1.88	0.56
4:C:108:GLY:HA2	4:C:109:GLN:HB3	1.87	0.56
5:D:53:ILE:HG13	5:D:61:ASN:HB3	1.88	0.56
1:A:578:PRO:HB2	1:A:581:VAL:HG13	1.88	0.55
4:C:79:ALA:O	4:C:171:ASN:ND2	2.36	0.55
5:D:162:SER:HB2	5:D:206:ASN:HB2	1.87	0.55
1:A:532:LEU:HD21	1:A:535:LEU:HD13	1.88	0.55
1:A:205:SER:O	1:A:207:ASN:ND2	2.39	0.55
1:A:439:GLY:O	1:A:441:ASN:ND2	2.40	0.55
3:H:109:ASP:OD1	3:H:110:SER:N	2.39	0.55
7:F:207:LYS:HG3	7:F:208:PRO:HD3	1.89	0.54
3:H:2:VAL:HG22	3:H:27:TYR:HB3	1.89	0.54
1:A:495:VAL:HG11	1:A:518:ILE:HD13	1.90	0.54
7:F:203:ASN:ND2	7:F:214:ASP:OD2	2.40	0.54
7:F:18:VAL:HG12	7:F:86:LEU:HD11	1.90	0.54
5:D:14:PRO:HD2	5:D:122:SER:HB3	1.90	0.53
7:F:102:MET:HG3	7:F:104:THR:HG23	1.89	0.53
2:L:1:ASP:OD2	2:L:95:SER:OG	2.24	0.53
1:A:141:ASN:HB3	1:A:144:VAL:HB	1.90	0.53
1:A:272:LYS:HD3	1:A:296:TRP:HE3	1.74	0.53
1:A:82:VAL:O	1:A:85:ASN:ND2	2.42	0.53
3:H:73:ASP:OD2	3:H:75:SER:OG	2.25	0.53
3:H:48:MET:HG2	3:H:64:PHE:HE1	1.73	0.52
1:A:49:LEU:O	1:A:73:ARG:NH2	2.29	0.52
4:C:88:SER:OG	4:C:96:GLN:OE1	2.26	0.52
6:E:187:TYR:O	6:E:193:TYR:OH	2.26	0.52
7:F:206:HIS:CD2	7:F:208:PRO:HD2	2.45	0.52
2:L:6:GLN:N	2:L:100:GLN:OE1	2.37	0.52
4:C:95:PHE:O	4:C:96:GLN:HB2	2.10	0.52
8:A:814:NAG:H61	9:A:815:BMA:H2	1.92	0.52
5:D:18:LEU:HD13	5:D:118:VAL:HG11	1.92	0.52
1:A:301:GLU:HA	1:A:324:VAL:HA	1.92	0.52
1:A:194:PHE:HB3	1:A:197:SER:HB2	1.92	0.51
1:A:77:LEU:HB2	1:A:98:LEU:HD22	1.92	0.51
6:E:121:PRO:HD3	6:E:133:VAL:HG22	1.93	0.51
1:A:649:CYS:HB2	1:A:680:PRO:HD2	1.92	0.50
1:A:591:ILE:HG22	1:A:612:LEU:HD11	1.92	0.50
2:L:214:CYS:O	3:H:225:HIS:NE2	2.34	0.50

Continued on next page...

Continued from previous page...

Atom-1	Atom-2	Interatomic distance (Å)	Clash overlap (Å)
4:C:2:SER:HB2	4:C:97:VAL:HG11	1.93	0.50
5:D:20:LEU:HD12	5:D:84:LEU:HD23	1.92	0.50
1:A:590:ILE:HG12	1:A:614:SER:HB3	1.94	0.50
1:A:592:ASP:HA	1:A:616:ASN:HB2	1.94	0.49
1:A:187:LYS:HA	1:A:213:SER:HB3	1.95	0.49
3:H:38:ARG:NH2	3:H:46:GLU:OE1	2.45	0.49
2:L:114:SER:HB2	2:L:137:ASN:HB3	1.95	0.49
7:F:129:PRO:HD3	7:F:215:LYS:HE2	1.93	0.49
1:A:354:LEU:HB3	1:A:357:LEU:HB2	1.95	0.49
1:A:208:GLN:HG2	1:A:210:LYS:HE2	1.93	0.48
3:H:19:LYS:HG3	3:H:82:GLN:HB3	1.95	0.48
1:A:319:HIS:HD2	1:A:353:TRP:CD1	2.32	0.48
5:D:20:LEU:HB2	5:D:84:LEU:HB3	1.94	0.48
7:F:51:ILE:HD12	7:F:70:LEU:HB3	1.96	0.48
7:F:153:PRO:HD2	7:F:208:PRO:HG2	1.94	0.48
2:L:35:TRP:HB2	2:L:48:ILE:HB	1.95	0.48
5:D:43:PRO:HD3	5:D:95:ALA:HA	1.95	0.48
6:E:5:THR:HB	6:E:24:ARG:HB3	1.96	0.48
3:H:199:THR:HG22	3:H:200:LYS:HG3	1.96	0.47
4:C:45:LEU:HD21	4:C:48:TYR:HB3	1.95	0.47
1:A:337:SER:O	1:A:339:SER:N	2.45	0.47
5:D:11:LEU:HD13	5:D:156:PRO:HG3	1.97	0.46
1:A:507:ASN:HA	1:A:531:LYS:HD2	1.97	0.46
7:F:198:LYS:HG2	7:F:199:THR:H	1.80	0.46
1:A:37:CYS:HB2	1:A:58:LEU:HD23	1.97	0.46
4:C:33:HIS:CE1	5:D:108:SER:HB3	2.50	0.46
3:H:143:THR:HG22	3:H:193:PRO:HA	1.98	0.46
5:D:138:ARG:HD2	5:D:140:THR:HG22	1.97	0.46
6:E:114:PRO:HD3	6:E:199:HIS:HD2	1.81	0.46
1:A:50:PRO:HG2	1:A:53:ILE:HG23	1.97	0.46
7:F:177:GLN:OE1	7:F:183:SER:OG	2.33	0.45
5:D:6:GLN:NE2	5:D:116:THR:HG22	2.31	0.45
5:D:49:TRP:HZ2	5:D:52:ILE:HG23	1.80	0.45
1:A:354:LEU:HD22	1:A:357:LEU:HD22	1.98	0.45
2:L:49:TYR:HB2	3:H:107:THR:HG21	1.98	0.45
4:C:98:PHE:HE2	5:D:49:TRP:HB2	1.81	0.45
1:A:387:SER:OG	8:A:813:NAG:O6	2.22	0.45
2:L:150:VAL:HG13	2:L:192:TYR:HE1	1.81	0.45
4:C:165:PRO:HA	4:C:175:ALA:HB2	1.99	0.45
5:D:49:TRP:CZ2	5:D:52:ILE:HG23	2.52	0.45
1:A:99:PRO:O	1:A:124:ASN:ND2	2.50	0.45

Continued on next page...

Continued from previous page...

Atom-1	Atom-2	Interatomic distance (Å)	Clash overlap (Å)
4:C:27:ILE:HG23	4:C:65:ASN:HD21	1.82	0.45
5:D:8:GLY:HA3	5:D:20:LEU:HD23	1.98	0.45
5:D:130:VAL:HG21	5:D:207:VAL:HG21	1.99	0.45
4:C:54:PRO:HD2	4:C:57:ILE:HG13	1.99	0.44
1:A:411:ILE:HG12	1:A:435:VAL:HB	1.99	0.44
1:A:34:VAL:HG13	1:A:55:VAL:HB	1.99	0.44
1:A:594:GLY:HA2	1:A:620:ASN:HD21	1.82	0.44
4:C:103:LYS:HD2	5:D:45:ARG:HH11	1.83	0.44
3:H:6:GLN:HB2	3:H:113:GLN:HE22	1.82	0.44
1:A:435:VAL:HG22	1:A:460:GLU:HG2	1.99	0.43
4:C:160:VAL:HG22	4:C:179:LEU:HD13	2.00	0.43
5:D:27:ASP:OD1	5:D:28:SER:N	2.50	0.43
5:D:96:VAL:HG22	5:D:117:LEU:HD13	1.99	0.43
7:F:67:LYS:NZ	7:F:85:SER:O	2.51	0.43
2:L:89:GLN:HE21	2:L:96:TYR:HB3	1.83	0.43
6:E:124:GLU:HA	6:E:127:LYS:HE3	2.00	0.43
1:A:455:LEU:HB3	1:A:458:ILE:HB	2.00	0.43
4:C:168:GLN:HG2	5:D:173:HIS:CE1	2.54	0.43
2:L:37:GLN:HB2	2:L:47:LEU:HD11	2.01	0.43
5:D:1:GLN:OE1	5:D:111:TYR:OH	2.22	0.43
6:E:146:LYS:HB2	6:E:198:THR:HB	2.01	0.43
3:H:97:ALA:HB1	3:H:108:PHE:HB3	2.01	0.43
1:A:468:TYR:HA	1:A:490:VAL:O	2.19	0.43
1:A:32:HIS:C	1:A:34:VAL:H	2.22	0.42
1:A:463:LEU:O	1:A:466:ASN:ND2	2.52	0.42
7:F:33:TRP:HA	7:F:53:PRO:HD3	2.00	0.42
1:A:564:LEU:HD21	1:A:567:LEU:HD13	2.01	0.42
7:F:36:TRP:NE1	7:F:70:LEU:HD21	2.34	0.42
1:A:515:ASN:HA	2:L:93:THR:HG23	2.00	0.42
7:F:24:ALA:HB3	7:F:29:PHE:HD2	1.83	0.42
1:A:352:GLN:HA	1:A:377:GLY:HA3	2.01	0.42
3:H:154:PHE:HA	3:H:155:PRO:HA	1.73	0.42
2:L:94:LEU:HD13	2:L:94:LEU:HA	1.84	0.42
1:A:198:SER:HA	1:A:222:ARG:HB2	2.01	0.42
4:C:7:PRO:HA	4:C:8:PRO:HD3	1.91	0.42
3:H:149:LEU:HD21	3:H:151:LYS:HD2	2.01	0.42
4:C:20:ILE:HG23	4:C:102:THR:HG21	2.02	0.42
1:A:331:ARG:NE	1:A:364:ASP:HB3	2.35	0.42
5:D:116:THR:HG1	5:D:210:LYS:HZ3	1.64	0.42
2:L:23:CYS:HB2	2:L:35:TRP:CH2	2.55	0.42
1:A:281:LEU:HB2	1:A:305:LEU:HD23	2.02	0.42

Continued on next page...

Continued from previous page...

Atom-1	Atom-2	Interatomic distance (Å)	Clash overlap (Å)
1:A:648:ASP:HA	1:A:679:THR:HG23	2.01	0.42
7:F:40:ARG:HB2	7:F:43:GLN:HB2	2.02	0.41
1:A:286:LEU:HD21	1:A:289:VAL:HG22	2.01	0.41
1:A:476:PHE:HB3	1:A:505:LEU:HD21	2.02	0.41
7:F:152:PHE:HA	7:F:153:PRO:HA	1.79	0.41
1:A:126:THR:HA	1:A:149:LEU:HA	2.03	0.41
2:L:203:SER:HA	2:L:204:PRO:HD3	1.92	0.41
1:A:40:LEU:HB2	1:A:42:LEU:HG	2.02	0.41
1:A:496:ASP:O	1:A:522:ASN:ND2	2.54	0.41
7:F:131:ALA:HA	7:F:132:PRO:HD3	1.86	0.41
6:E:165:THR:OG1	6:E:166:GLU:N	2.53	0.41
6:E:83:PHE:HB3	6:E:106:LEU:HD11	2.02	0.41
1:A:336:GLN:HG2	1:A:338:ILE:H	1.86	0.41
1:A:331:ARG:HE	1:A:364:ASP:HB3	1.85	0.41
4:C:164:THR:HA	4:C:165:PRO:HD3	1.94	0.41
5:D:177:ALA:HB2	5:D:187:LEU:HD12	2.03	0.41
3:H:162:TRP:CZ3	3:H:204:CYS:HB3	2.56	0.41
1:A:430:LEU:HB3	1:A:433:LEU:HB2	2.03	0.41
7:F:219:HIS:HB3	7:F:220:HIS:H	1.61	0.41
1:A:116:ASP:O	1:A:120:ALA:HB2	2.21	0.41
7:F:51:ILE:HB	7:F:70:LEU:HD13	2.03	0.41
5:D:127:GLY:HA2	5:D:128:PRO:HD3	1.88	0.40
4:C:113:ALA:HA	4:C:114:PRO:HD3	1.86	0.40
1:A:487:LEU:HB2	1:A:513:LEU:HD23	2.03	0.40
7:F:11:LEU:HD22	7:F:153:PRO:HD3	2.03	0.40

There are no symmetry-related clashes.

5.3 Torsion angles [i](#)

5.3.1 Protein backbone [i](#)

In the following table, the Percentiles column shows the percent Ramachandran outliers of the chain as a percentile score with respect to all X-ray entries followed by that with respect to entries of similar resolution.

The Analysed column shows the number of residues for which the backbone conformation was analysed, and the total number of residues.

Mol	Chain	Analysed	Favoured	Allowed	Outliers	Percentiles
1	A	666/694 (96%)	609 (91%)	55 (8%)	2 (0%)	43 78

Continued on next page...

Continued from previous page...

Mol	Chain	Analysed	Favoured	Allowed	Outliers	Percentiles	
2	L	212/214 (99%)	204 (96%)	6 (3%)	2 (1%)	19	62
3	H	223/225 (99%)	207 (93%)	15 (7%)	1 (0%)	36	75
4	C	208/213 (98%)	193 (93%)	12 (6%)	3 (1%)	12	52
5	D	222/226 (98%)	202 (91%)	17 (8%)	3 (1%)	12	52
6	E	213/215 (99%)	198 (93%)	12 (6%)	3 (1%)	12	52
7	F	213/223 (96%)	192 (90%)	20 (9%)	1 (0%)	31	72
All	All	1957/2010 (97%)	1805 (92%)	137 (7%)	15 (1%)	21	64

All (15) Ramachandran outliers are listed below:

Mol	Chain	Res	Type
1	A	139	LYS
2	L	143	GLU
7	F	218	HIS
2	L	138	ASN
4	C	93	PRO
4	C	96	GLN
6	E	92	TRP
5	D	105	PRO
5	D	125	THR
6	E	139	ASN
1	A	378	LEU
6	E	9	ALA
5	D	153	ASP
3	H	193	PRO
4	C	8	PRO

5.3.2 Protein sidechains [i](#)

In the following table, the Percentiles column shows the percent sidechain outliers of the chain as a percentile score with respect to all X-ray entries followed by that with respect to entries of similar resolution.

The Analysed column shows the number of residues for which the sidechain conformation was analysed, and the total number of residues.

Mol	Chain	Analysed	Rotameric	Outliers	Percentiles	
1	A	622/644 (97%)	618 (99%)	4 (1%)	87	95
2	L	186/186 (100%)	177 (95%)	9 (5%)	28	64

Continued on next page...

Continued from previous page...

Mol	Chain	Analysed	Rotameric	Outliers	Percentiles	
3	H	194/194 (100%)	190 (98%)	4 (2%)	56	82
4	C	178/181 (98%)	176 (99%)	2 (1%)	76	89
5	D	197/199 (99%)	191 (97%)	6 (3%)	44	75
6	E	188/188 (100%)	178 (95%)	10 (5%)	25	61
7	F	189/195 (97%)	181 (96%)	8 (4%)	32	68
All	All	1754/1787 (98%)	1711 (98%)	43 (2%)	50	79

All (43) residues with a non-rotameric sidechain are listed below:

Mol	Chain	Res	Type
1	A	208	GLN
1	A	303	PHE
1	A	498	SER
1	A	607	ASN
2	L	11	LEU
2	L	33	LEU
2	L	94	LEU
2	L	100	GLN
2	L	108	ARG
2	L	110	VAL
2	L	160	GLN
2	L	164	THR
2	L	185	ASP
3	H	67	GLN
3	H	118	THR
3	H	178	LEU
3	H	205	ASN
4	C	25	ASP
4	C	95	PHE
5	D	17	THR
5	D	32	ASN
5	D	47	LEU
5	D	52	ILE
5	D	106	PHE
5	D	114	GLN
6	E	11	LEU
6	E	21	ILE
6	E	23	CYS
6	E	33	LEU
6	E	81	GLU

Continued on next page...

Continued from previous page...

Mol	Chain	Res	Type
6	E	90	HIS
6	E	106	LEU
6	E	108	ARG
6	E	165	THR
6	E	202	LEU
7	F	57	ARG
7	F	72	VAL
7	F	103	ILE
7	F	104	THR
7	F	165	LEU
7	F	175	VAL
7	F	207	LYS
7	F	217	VAL

Some sidechains can be flipped to improve hydrogen bonding and reduce clashes. All (4) such sidechains are listed below:

Mol	Chain	Res	Type
1	A	208	GLN
1	A	620	ASN
2	L	89	GLN
5	D	173	HIS

5.3.3 RNA [i](#)

There are no RNA molecules in this entry.

5.4 Non-standard residues in protein, DNA, RNA chains [i](#)

There are no non-standard protein/DNA/RNA residues in this entry.

5.5 Carbohydrates [i](#)

There are no carbohydrates in this entry.

5.6 Ligand geometry [i](#)

24 ligands are modelled in this entry.

In the following table, the Counts columns list the number of bonds (or angles) for which Mogul statistics could be retrieved, the number of bonds (or angles) that are observed in the model and the number of bonds (or angles) that are defined in the Chemical Component Dictionary. The Link column lists molecule types, if any, to which the group is linked. The Z score for a bond length (or angle) is the number of standard deviations the observed value is removed from the expected value. A bond length (or angle) with $|Z| > 2$ is considered an outlier worth inspection. RMSZ is the root-mean-square of all Z scores of the bond lengths (or angles).

Mol	Type	Chain	Res	Link	Bond lengths			Bond angles		
					Counts	RMSZ	# Z > 2	Counts	RMSZ	# Z > 2
8	NAG	A	801	1	14,14,15	0.54	0	17,19,21	1.15	2 (11%)
8	NAG	A	802	1	14,14,15	0.51	0	17,19,21	0.72	0
8	NAG	A	803	1	14,14,15	0.54	0	17,19,21	0.83	0
8	NAG	A	804	1	14,14,15	0.50	0	17,19,21	0.72	0
8	NAG	A	805	1	14,14,15	0.54	0	17,19,21	0.66	0
8	NAG	A	806	1,8	14,14,15	0.50	0	17,19,21	0.92	1 (5%)
8	NAG	A	807	8	14,14,15	0.46	0	17,19,21	0.71	0
8	NAG	A	808	1	14,14,15	0.46	0	17,19,21	0.79	0
8	NAG	A	809	1,8	14,14,15	0.55	0	17,19,21	0.67	0
8	NAG	A	810	8	14,14,15	0.51	0	17,19,21	0.68	0
8	NAG	A	811	1,8	14,14,15	0.53	0	17,19,21	1.01	1 (5%)
8	NAG	A	812	8	14,14,15	0.54	0	17,19,21	0.68	0
8	NAG	A	813	1,8	14,14,15	0.50	0	17,19,21	0.70	0
8	NAG	A	814	9,8	14,14,15	0.56	0	17,19,21	0.70	0
9	BMA	A	815	8,10	11,11,12	0.61	0	15,15,17	0.61	0
10	MAN	A	816	9	11,11,12	0.65	0	15,15,17	1.77	5 (33%)
8	NAG	A	817	1,8	14,14,15	0.46	0	17,19,21	1.31	2 (11%)
8	NAG	A	818	8	14,14,15	0.51	0	17,19,21	0.67	0
11	SO4	A	819	-	4,4,4	0.16	0	6,6,6	0.08	0
11	SO4	A	820	-	4,4,4	0.16	0	6,6,6	0.08	0
11	SO4	A	821	-	4,4,4	0.16	0	6,6,6	0.07	0
11	SO4	A	822	-	4,4,4	0.16	0	6,6,6	0.07	0
11	SO4	E	301	-	4,4,4	0.17	0	6,6,6	0.07	0
11	SO4	E	302	-	4,4,4	0.15	0	6,6,6	0.07	0

In the following table, the Chirals column lists the number of chiral outliers, the number of chiral centers analysed, the number of these observed in the model and the number defined in the Chemical Component Dictionary. Similar counts are reported in the Torsion and Rings columns. '-' means no outliers of that kind were identified.

Mol	Type	Chain	Res	Link	Chirals	Torsions	Rings
8	NAG	A	801	1	-	0/6/23/26	0/1/1/1
8	NAG	A	802	1	-	0/6/23/26	0/1/1/1
8	NAG	A	803	1	-	0/6/23/26	0/1/1/1

Continued on next page...

Continued from previous page...

Mol	Type	Chain	Res	Link	Chirals	Torsions	Rings
8	NAG	A	804	1	-	0/6/23/26	0/1/1/1
8	NAG	A	805	1	-	0/6/23/26	0/1/1/1
8	NAG	A	806	1,8	-	0/6/23/26	0/1/1/1
8	NAG	A	807	8	-	0/6/23/26	0/1/1/1
8	NAG	A	808	1	-	0/6/23/26	0/1/1/1
8	NAG	A	809	1,8	-	1/6/23/26	0/1/1/1
8	NAG	A	810	8	-	0/6/23/26	0/1/1/1
8	NAG	A	811	1,8	-	0/6/23/26	0/1/1/1
8	NAG	A	812	8	-	0/6/23/26	0/1/1/1
8	NAG	A	813	1,8	-	0/6/23/26	0/1/1/1
8	NAG	A	814	9,8	-	0/6/23/26	0/1/1/1
9	BMA	A	815	8,10	-	0/2/19/22	0/1/1/1
10	MAN	A	816	9	-	0/2/19/22	0/1/1/1
8	NAG	A	817	1,8	-	0/6/23/26	0/1/1/1
8	NAG	A	818	8	-	0/6/23/26	0/1/1/1
11	SO4	A	819	-	-	0/0/0/0	0/0/0/0
11	SO4	A	820	-	-	0/0/0/0	0/0/0/0
11	SO4	A	821	-	-	0/0/0/0	0/0/0/0
11	SO4	A	822	-	-	0/0/0/0	0/0/0/0
11	SO4	E	301	-	-	0/0/0/0	0/0/0/0
11	SO4	E	302	-	-	0/0/0/0	0/0/0/0

There are no bond length outliers.

All (11) bond angle outliers are listed below:

Mol	Chain	Res	Type	Atoms	Z	Observed(°)	Ideal(°)
8	A	811	NAG	O5-C1-C2	-2.58	107.97	111.52
8	A	806	NAG	O5-C1-C2	-2.32	108.32	111.52
10	A	816	MAN	O2-C2-C3	-2.16	105.97	110.19
10	A	816	MAN	C2-C3-C4	2.04	114.41	110.87
8	A	801	NAG	O5-C1-C2	2.32	114.72	111.52
10	A	816	MAN	O5-C5-C6	2.59	111.25	107.15
8	A	801	NAG	C1-O5-C5	2.84	116.09	112.19
8	A	817	NAG	C1-O5-C5	2.98	116.29	112.19
10	A	816	MAN	C1-O5-C5	3.24	116.65	112.19
8	A	817	NAG	O5-C5-C6	3.59	112.82	107.15
10	A	816	MAN	C1-C2-C3	3.99	114.71	109.66

There are no chirality outliers.

All (1) torsion outliers are listed below:

Mol	Chain	Res	Type	Atoms
8	A	809	NAG	O7-C7-N2-C2

There are no ring outliers.

5 monomers are involved in 5 short contacts:

Mol	Chain	Res	Type	Clashes	Symm-Clashes
8	A	802	NAG	1	0
8	A	803	NAG	1	0
8	A	813	NAG	2	0
8	A	814	NAG	1	0
9	A	815	BMA	1	0

5.7 Other polymers [i](#)

There are no such residues in this entry.

5.8 Polymer linkage issues [i](#)

There are no chain breaks in this entry.

6 Fit of model and data

6.1 Protein, DNA and RNA chains

In the following table, the column labelled ‘#RSRZ> 2’ contains the number (and percentage) of RSRZ outliers, followed by percent RSRZ outliers for the chain as percentile scores relative to all X-ray entries and entries of similar resolution. The OWAB column contains the minimum, median, 95th percentile and maximum values of the occupancy-weighted average B-factor per residue. The column labelled ‘Q< 0.9’ lists the number of (and percentage) of residues with an average occupancy less than 0.9.

Mol	Chain	Analysed	<RSRZ>	#RSRZ>2	OWAB(Å ²)	Q<0.9
1	A	668/694 (96%)	-0.09	18 (2%) 54 48	3, 49, 124, 179	0
2	L	214/214 (100%)	-0.18	2 (0%) 84 79	13, 55, 122, 149	0
3	H	225/225 (100%)	0.22	17 (7%) 14 13	11, 57, 168, 189	0
4	C	210/213 (98%)	1.23	51 (24%) 0 0	60, 149, 206, 228	0
5	D	224/226 (99%)	0.79	39 (17%) 1 2	39, 86, 225, 262	0
6	E	215/215 (100%)	-0.15	0 100 100	5, 34, 75, 112	0
7	F	217/223 (97%)	-0.12	2 (0%) 84 79	6, 32, 99, 127	0
All	All	1973/2010 (98%)	0.17	129 (6%) 19 16	3, 56, 181, 262	0

All (129) RSRZ outliers are listed below:

Mol	Chain	Res	Type	RSRZ
5	D	134	ALA	12.3
5	D	148	GLY	8.9
4	C	116	VAL	8.2
5	D	147	LEU	8.2
5	D	131	PHE	5.7
5	D	194	PRO	5.5
4	C	135	CYS	5.3
4	C	2	SER	5.3
5	D	193	VAL	5.1
5	D	145	ALA	5.0
4	C	118	LEU	4.9
3	H	219	VAL	4.9
5	D	133	LEU	4.8
5	D	224	HIS	4.8
5	D	189	SER	4.7
5	D	203	TYR	4.7
4	C	149	TRP	4.6

Continued on next page...

Continued from previous page...

Mol	Chain	Res	Type	RSRZ
4	C	120	PRO	4.6
3	H	222	HIS	4.5
5	D	220	VAL	4.5
4	C	117	THR	4.5
5	D	146	ALA	4.4
4	C	153	SER	4.4
5	D	204	THR	4.3
5	D	132	PRO	4.3
3	H	202	TYR	4.1
4	C	181	LEU	4.1
3	H	224	HIS	4.0
5	D	192	THR	4.0
5	D	135	PRO	4.0
4	C	157	LYS	3.8
5	D	190	VAL	3.8
4	C	202	THR	3.8
5	D	144	THR	3.8
5	D	219	ARG	3.8
5	D	139	SER	3.8
4	C	145	VAL	3.7
4	C	136	LEU	3.7
4	C	154	SER	3.7
4	C	176	SER	3.7
4	C	206	THR	3.7
5	D	202	THR	3.5
3	H	146	LEU	3.5
4	C	203	VAL	3.5
4	C	201	SER	3.3
5	D	196	SER	3.3
4	C	110	PRO	3.3
3	H	225	HIS	3.3
3	H	196	SER	3.3
4	C	107	LEU	3.2
3	H	223	HIS	3.2
5	D	138	ARG	3.1
4	C	195	GLN	3.1
1	A	53	ILE	3.1
3	H	144	ALA	3.1
1	A	690	LEU	3.1
1	A	339	SER	3.1
5	D	221	HIS	3.0
4	C	109	GLN	3.0

Continued on next page...

Continued from previous page...

Mol	Chain	Res	Type	RSRZ
4	C	197	THR	2.9
1	A	688	VAL	2.9
4	C	115	SER	2.9
4	C	134	VAL	2.9
1	A	52	ASN	2.9
3	H	201	THR	2.8
4	C	114	PRO	2.8
5	D	223	HIS	2.8
3	H	203	THR	2.7
1	A	45	VAL	2.7
3	H	192	VAL	2.7
4	C	185	GLN	2.7
4	C	204	GLU	2.7
1	A	41	LYS	2.7
4	C	196	VAL	2.6
5	D	141	SER	2.6
1	A	50	PRO	2.6
1	A	340	LEU	2.6
5	D	191	VAL	2.6
4	C	150	LYS	2.5
4	C	19	ARG	2.5
1	A	46	PRO	2.5
3	H	200	LYS	2.5
5	D	216	VAL	2.5
4	C	178	TYR	2.5
1	A	35	ALA	2.5
4	C	200	GLY	2.5
4	C	137	ILE	2.5
1	A	30	VAL	2.4
5	D	136	CYS	2.4
4	C	182	THR	2.4
4	C	194	CYS	2.4
5	D	201	LYS	2.3
4	C	183	PRO	2.3
4	C	12	VAL	2.3
3	H	138	SER	2.3
4	C	146	THR	2.3
5	D	197	SER	2.3
5	D	6	GLN	2.3
7	F	217	VAL	2.2
5	D	200	THR	2.2
4	C	207	VAL	2.2

Continued on next page...

Continued from previous page...

Mol	Chain	Res	Type	RSRZ
2	L	186	TYR	2.2
1	A	691	PHE	2.2
5	D	195	SER	2.2
1	A	36	ASP	2.2
5	D	163	TRP	2.2
3	H	137	ARG	2.1
4	C	121	PRO	2.1
4	C	105	THR	2.1
4	C	180	SER	2.1
4	C	193	SER	2.1
3	H	145	ALA	2.1
1	A	657	PHE	2.1
5	D	137	SER	2.1
2	L	193	ALA	2.1
4	C	192	TYR	2.1
4	C	158	ALA	2.1
3	H	134	PRO	2.1
4	C	77	THR	2.1
4	C	108	GLY	2.1
5	D	198	LEU	2.1
4	C	74	ILE	2.1
1	A	48	ASP	2.1
1	A	97	LYS	2.0
1	A	49	LEU	2.0
4	C	175	ALA	2.0
7	F	199	THR	2.0
4	C	119	PHE	2.0
5	D	188	SER	2.0

6.2 Non-standard residues in protein, DNA, RNA chains [i](#)

There are no non-standard protein/DNA/RNA residues in this entry.

6.3 Carbohydrates [i](#)

There are no carbohydrates in this entry.

6.4 Ligands [i](#)

In the following table, the Atoms column lists the number of modelled atoms in the group and the number defined in the chemical component dictionary. The B-factors column lists the minimum,

median, 95th percentile and maximum values of B factors of atoms in the group. The column labelled 'Q< 0.9' lists the number of atoms with occupancy less than 0.9.

Mol	Type	Chain	Res	Atoms	RSCC	RSR	B-factors(Å ²)	Q<0.9
8	NAG	A	801	14/15	0.59	0.50	133,166,191,193	0
8	NAG	A	810	14/15	0.73	0.33	74,124,133,137	0
8	NAG	A	803	14/15	0.77	0.29	105,151,169,172	0
8	NAG	A	802	14/15	0.78	0.27	94,127,144,145	0
8	NAG	A	812	14/15	0.81	0.40	105,138,158,163	0
9	BMA	A	815	11/12	0.81	0.20	48,92,120,142	0
10	MAN	A	816	11/12	0.85	0.17	53,101,116,119	0
11	SO4	A	822	5/5	0.86	0.29	93,94,115,128	0
8	NAG	A	807	14/15	0.87	0.25	94,118,124,125	0
8	NAG	A	817	14/15	0.88	0.19	28,53,88,110	0
8	NAG	A	805	14/15	0.88	0.18	66,87,107,107	0
8	NAG	A	804	14/15	0.89	0.17	57,96,102,111	0
8	NAG	A	814	14/15	0.89	0.17	19,62,78,88	0
11	SO4	E	302	5/5	0.91	0.14	60,84,100,102	0
8	NAG	A	808	14/15	0.91	0.17	47,76,88,88	0
8	NAG	A	806	14/15	0.91	0.30	69,107,119,120	0
8	NAG	A	818	14/15	0.91	0.26	77,100,110,112	0
8	NAG	A	809	14/15	0.92	0.28	54,68,103,117	0
8	NAG	A	811	14/15	0.92	0.18	57,87,103,134	0
11	SO4	A	821	5/5	0.93	0.19	69,82,105,113	0
8	NAG	A	813	14/15	0.96	0.17	21,36,53,58	0
11	SO4	A	820	5/5	0.97	0.16	27,29,36,37	0
11	SO4	A	819	5/5	0.97	0.19	26,28,45,50	0
11	SO4	E	301	5/5	0.97	0.15	38,47,69,72	0

6.5 Other polymers [\(i\)](#)

There are no such residues in this entry.