



# Full wwPDB X-ray Structure Validation Report ⓘ

May 25, 2020 – 08:10 am BST

PDB ID : 6ULX  
Title : Adenylation domain of a keto acid-selecting NRPS module bound to keto acyl  
adenylate space group P43212  
Authors : Alonzo, D.A.; Chiche-Lapierre, C.; Schmeing, T.M.  
Deposited on : 2019-10-08  
Resolution : 2.31 Å(reported)

This is a Full wwPDB X-ray Structure Validation Report for a publicly released PDB entry.

We welcome your comments at [validation@mail.wwpdb.org](mailto:validation@mail.wwpdb.org)

A user guide is available at

<https://www.wwpdb.org/validation/2017/XrayValidationReportHelp>

with specific help available everywhere you see the ⓘ symbol.

---

The following versions of software and data (see [references ⓘ](#)) were used in the production of this report:

MolProbity : 4.02b-467  
Mogul : 1.8.5 (274361), CSD as541be (2020)  
Xtriage (Phenix) : 1.13  
EDS : 2.11  
buster-report : 1.1.7 (2018)  
Percentile statistics : 20191225.v01 (using entries in the PDB archive December 25th 2019)  
Refmac : 5.8.0158  
CCP4 : 7.0.044 (Gargrove)  
Ideal geometry (proteins) : Engh & Huber (2001)  
Ideal geometry (DNA, RNA) : Parkinson et al. (1996)  
Validation Pipeline (wwPDB-VP) : 2.11

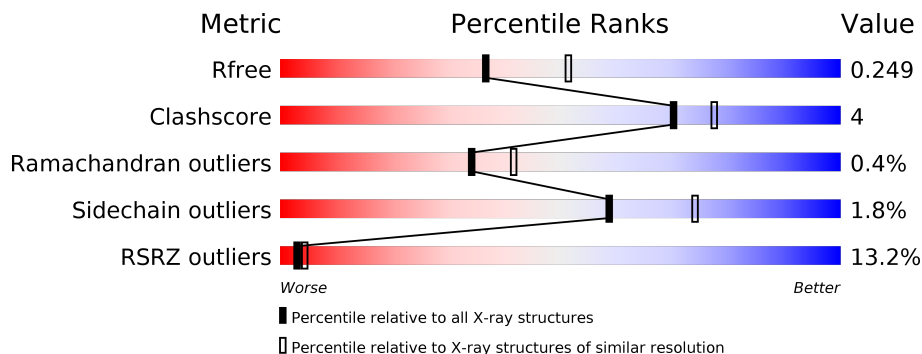
# 1 Overall quality at a glance

The following experimental techniques were used to determine the structure:

*X-RAY DIFFRACTION*

The reported resolution of this entry is 2.31 Å.

Percentile scores (ranging between 0-100) for global validation metrics of the entry are shown in the following graphic. The table shows the number of entries on which the scores are based.



Metric	Whole archive (#Entries)	Similar resolution (#Entries, resolution range(Å))
$R_{free}$	130704	5974 (2.34-2.30)
Clashscore	141614	6604 (2.34-2.30)
Ramachandran outliers	138981	6523 (2.34-2.30)
Sidechain outliers	138945	6523 (2.34-2.30)
RSRZ outliers	127900	5855 (2.34-2.30)

The table below summarises the geometric issues observed across the polymeric chains and their fit to the electron density. The red, orange, yellow and green segments on the lower bar indicate the fraction of residues that contain outliers for  $\geq 3$ , 2, 1 and 0 types of geometric quality criteria respectively. A grey segment represents the fraction of residues that are not modelled. The numeric value for each fraction is indicated below the corresponding segment, with a dot representing fractions  $\leq 5\%$ . The upper red bar (where present) indicates the fraction of residues that have poor fit to the electron density. The numeric value is given above the bar.

Mol	Chain	Length	Quality of chain
1	A	576	

## 2 Entry composition

There are 4 unique types of molecules in this entry. The entry contains 8709 atoms, of which 4239 are hydrogens and 0 are deuteriums.

In the tables below, the ZeroOcc column contains the number of atoms modelled with zero occupancy, the AltConf column contains the number of residues with at least one atom in alternate conformation and the Trace column contains the number of residues modelled with at most 2 atoms.

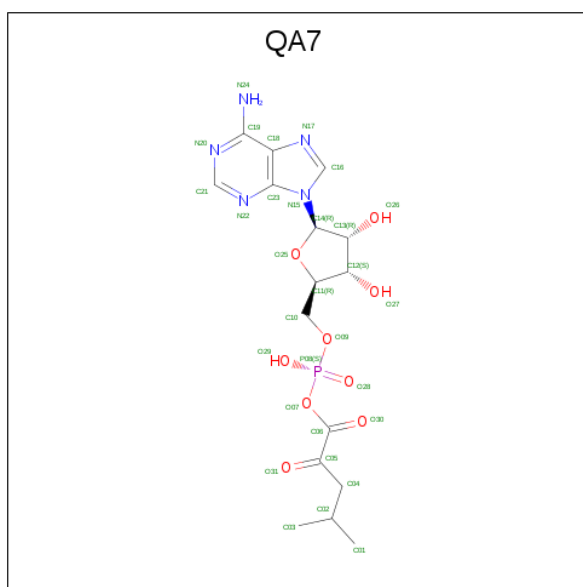
- Molecule 1 is a protein called Amino acid adenylation domain-containing protein.

Mol	Chain	Residues	Atoms						ZeroOcc	AltConf	Trace
			Total	C	H	N	O	S			
1	A	551	8513	2733	4218	737	805	20	0	0	0

There are 9 discrepancies between the modelled and reference sequences:

Chain	Residue	Modelled	Actual	Comment	Reference
A	650	ALA	-	expression tag	UNP M5R382
A	651	ALA	-	expression tag	UNP M5R382
A	652	ALA	-	expression tag	UNP M5R382
A	653	GLU	-	expression tag	UNP M5R382
A	654	ASN	-	expression tag	UNP M5R382
A	655	LEU	-	expression tag	UNP M5R382
A	656	TYR	-	expression tag	UNP M5R382
A	657	PHE	-	expression tag	UNP M5R382
A	658	GLN	-	expression tag	UNP M5R382

- Molecule 2 is 5'-O-{(S)-hydroxy[(4-methyl-2-oxopentanoyl)oxy]phosphoryl}adenosine (three-letter code: QA7) (formula: C<sub>16</sub>H<sub>22</sub>N<sub>5</sub>O<sub>9</sub>P) (labeled as "Ligand of Interest" by author).



Mol	Chain	Residues	Atoms					ZeroOcc	AltConf	
			Total	C	H	N	O			P
2	A	1	52	16	21	5	9	1	0	0

- Molecule 3 is SULFATE ION (three-letter code: SO4) (formula: O<sub>4</sub>S).



Mol	Chain	Residues	Atoms		ZeroOcc	AltConf
			Total	O S		
3	A	1	5	4 1	0	0
3	A	1	5	4 1	0	0
3	A	1	5	4 1	0	0

Continued on next page...

*Continued from previous page...*

Mol	Chain	Residues	Atoms			ZeroOcc	AltConf
3	A	1	Total	O	S	0	0
			5	4	1		
3	A	1	Total	O	S	0	0
			5	4	1		
3	A	1	Total	O	S	0	0
			5	4	1		
3	A	1	Total	O	S	0	0
			5	4	1		
3	A	1	Total	O	S	0	0
			5	4	1		
3	A	1	Total	O	S	0	0
			5	4	1		
3	A	1	Total	O	S	0	0
			5	4	1		
3	A	1	Total	O	S	0	0
			5	4	1		
3	A	1	Total	O	S	0	0
			5	4	1		
3	A	1	Total	O	S	0	0
			5	4	1		
3	A	1	Total	O	S	0	0
			5	4	1		

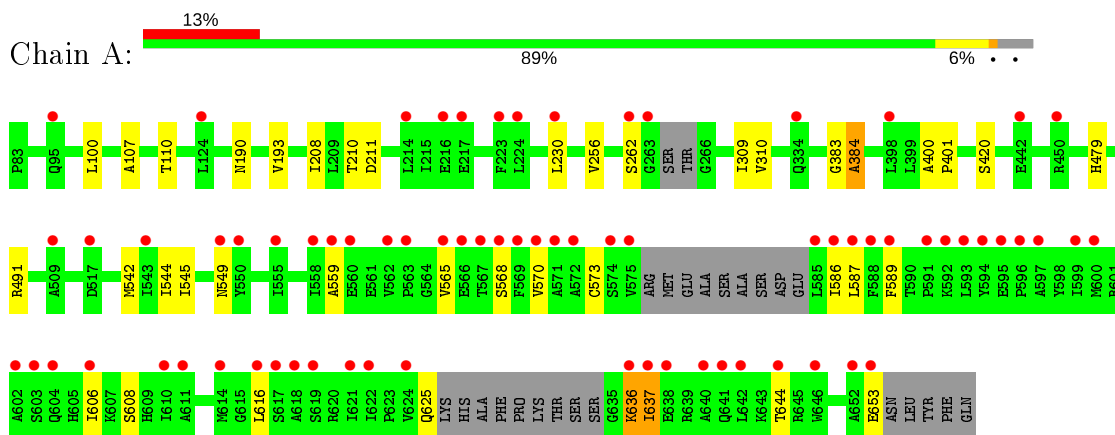
- Molecule 4 is water.

Mol	Chain	Residues	Atoms		ZeroOcc	AltConf
4	A	59	Total	O	0	0
			59	59		

### 3 Residue-property plots [i](#)

These plots are drawn for all protein, RNA and DNA chains in the entry. The first graphic for a chain summarises the proportions of the various outlier classes displayed in the second graphic. The second graphic shows the sequence view annotated by issues in geometry and electron density. Residues are color-coded according to the number of geometric quality criteria for which they contain at least one outlier: green = 0, yellow = 1, orange = 2 and red = 3 or more. A red dot above a residue indicates a poor fit to the electron density ( $RSRZ > 2$ ). Stretches of 2 or more consecutive residues without any outlier are shown as a green connector. Residues present in the sample, but not in the model, are shown in grey.

- Molecule 1: Amino acid adenylation domain-containing protein



## 4 Data and refinement statistics

Property	Value	Source
Space group	P 43 21 2	Depositor
Cell constants a, b, c, $\alpha$ , $\beta$ , $\gamma$	103.27Å 103.27Å 172.75Å 90.00° 90.00° 90.00°	Depositor
Resolution (Å)	73.03 – 2.31 88.64 – 2.31	Depositor EDS
% Data completeness (in resolution range)	99.5 (73.03-2.31) 93.2 (88.64-2.31)	Depositor EDS
$R_{merge}$	(Not available)	Depositor
$R_{sym}$	(Not available)	Depositor
$\langle I/\sigma(I) \rangle$ <sup>1</sup>	1.70 (at 2.32Å)	Xtrriage
Refinement program	PHENIX 1.15.2_3472	Depositor
R, $R_{free}$	0.222 , 0.249 0.222 , 0.249	Depositor DCC
$R_{free}$ test set	1905 reflections (4.55%)	wwPDB-VP
Wilson B-factor (Å <sup>2</sup> )	39.3	Xtrriage
Anisotropy	0.697	Xtrriage
Bulk solvent $k_{sol}$ (e/Å <sup>3</sup> ), $B_{sol}$ (Å <sup>2</sup> )	0.42 , 75.6	EDS
L-test for twinning <sup>2</sup>	$\langle  L  \rangle = 0.49$ , $\langle L^2 \rangle = 0.32$	Xtrriage
Estimated twinning fraction	No twinning to report.	Xtrriage
$F_o, F_c$ correlation	0.94	EDS
Total number of atoms	8709	wwPDB-VP
Average B, all atoms (Å <sup>2</sup> )	69.0	wwPDB-VP

Xtrriage's analysis on translational NCS is as follows: *The largest off-origin peak in the Patterson function is 4.26% of the height of the origin peak. No significant pseudotranslation is detected.*

<sup>1</sup>Intensities estimated from amplitudes.

<sup>2</sup>Theoretical values of  $\langle |L| \rangle$ ,  $\langle L^2 \rangle$  for acentric reflections are 0.5, 0.333 respectively for untwinned datasets, and 0.375, 0.2 for perfectly twinned datasets.

## 5 Model quality [i](#)

### 5.1 Standard geometry [i](#)

Bond lengths and bond angles in the following residue types are not validated in this section: QA7, SO4

The Z score for a bond length (or angle) is the number of standard deviations the observed value is removed from the expected value. A bond length (or angle) with  $|Z| > 5$  is considered an outlier worth inspection. RMSZ is the root-mean-square of all Z scores of the bond lengths (or angles).

Mol	Chain	Bond lengths		Bond angles	
		RMSZ	# Z  >5	RMSZ	# Z  >5
1	A	0.29	0/4394	0.44	0/5967

There are no bond length outliers.

There are no bond angle outliers.

There are no chirality outliers.

There are no planarity outliers.

### 5.2 Too-close contacts [i](#)

In the following table, the Non-H and H(model) columns list the number of non-hydrogen atoms and hydrogen atoms in the chain respectively. The H(added) column lists the number of hydrogen atoms added and optimized by MolProbity. The Clashes column lists the number of clashes within the asymmetric unit, whereas Symm-Clashes lists symmetry related clashes.

Mol	Chain	Non-H	H(model)	H(added)	Clashes	Symm-Clashes
1	A	4295	4218	4217	31	2
2	A	31	21	0	0	0
3	A	85	0	0	1	0
4	A	59	0	0	0	0
All	All	4470	4239	4217	31	2

The all-atom clashscore is defined as the number of clashes found per 1000 atoms (including hydrogen atoms). The all-atom clashscore for this structure is 4.

All (31) close contacts within the same asymmetric unit are listed below, sorted by their clash magnitude.



Atom-1	Atom-2	Interatomic distance (Å)	Clash overlap (Å)
1:A:636:LYS:C	1:A:637:ILE:HD13	1.76	1.06
1:A:545:ILE:HG12	1:A:616:LEU:HD11	1.66	0.77
1:A:565:VAL:HG21	1:A:606:ILE:HD11	1.69	0.74
1:A:587:LEU:HD23	1:A:606:ILE:CG2	2.19	0.73
1:A:107:ALA:O	1:A:110:THR:HG22	1.89	0.72
1:A:587:LEU:HD23	1:A:606:ILE:HG21	1.73	0.71
1:A:637:ILE:N	1:A:637:ILE:HD13	2.07	0.68
1:A:636:LYS:O	1:A:637:ILE:HD13	1.95	0.66
1:A:309:ILE:HG23	1:A:310:VAL:HG23	1.79	0.63
1:A:559:ALA:HB1	1:A:587:LEU:HD21	1.83	0.61
1:A:636:LYS:C	1:A:637:ILE:CD1	2.62	0.61
1:A:100:LEU:HD22	1:A:256:VAL:HG21	1.83	0.59
1:A:210:THR:HG22	1:A:211:ASP:H	1.68	0.58
1:A:636:LYS:O	1:A:637:ILE:CD1	2.50	0.58
1:A:190:ASN:OD1	1:A:193:VAL:HG23	2.05	0.56
1:A:587:LEU:HD23	1:A:606:ILE:HG23	1.89	0.55
1:A:545:ILE:CG1	1:A:616:LEU:HD11	2.38	0.54
1:A:210:THR:HG22	1:A:211:ASP:N	2.22	0.54
1:A:208:ILE:HD12	1:A:230:LEU:HD11	1.93	0.50
1:A:565:VAL:CG2	1:A:606:ILE:HD11	2.39	0.50
1:A:383:GLY:O	1:A:384:ALA:CB	2.60	0.50
1:A:559:ALA:CB	1:A:587:LEU:HD21	2.42	0.48
1:A:383:GLY:O	1:A:384:ALA:HB3	2.13	0.48
1:A:568:SER:HB2	1:A:587:LEU:HD11	1.95	0.48
1:A:491:ARG:NH1	3:A:709:SO4:O4	2.47	0.47
1:A:636:LYS:HB2	1:A:636:LYS:HE2	1.57	0.47
1:A:570:VAL:HG23	1:A:586:ILE:O	2.18	0.43
1:A:542:MET:HE2	1:A:549:ASN:HB3	2.00	0.43
1:A:400:ALA:N	1:A:401:PRO:HD2	2.34	0.42
1:A:565:VAL:HG13	1:A:589:PHE:HB2	2.02	0.42
1:A:544:ILE:HG12	1:A:549:ASN:OD1	2.21	0.41

All (2) symmetry-related close contacts are listed below. The label for Atom-2 includes the symmetry operator and encoded unit-cell translations to be applied.

Atom-1	Atom-2	Interatomic distance (Å)	Clash overlap (Å)
1:A:573:CYS:SG	1:A:573:CYS:HG[8_554]	1.20	0.40
1:A:573:CYS:CB	1:A:573:CYS:SG[8_554]	1.89	0.31

## 5.3 Torsion angles [i](#)

### 5.3.1 Protein backbone [i](#)

In the following table, the Percentiles column shows the percent Ramachandran outliers of the chain as a percentile score with respect to all X-ray entries followed by that with respect to entries of similar resolution.

The Analysed column shows the number of residues for which the backbone conformation was analysed, and the total number of residues.

Mol	Chain	Analysed	Favoured	Allowed	Outliers	Percentiles
1	A	543/576 (94%)	533 (98%)	8 (2%)	2 (0%)	34 41

All (2) Ramachandran outliers are listed below:

Mol	Chain	Res	Type
1	A	384	ALA
1	A	420	SER

### 5.3.2 Protein sidechains [i](#)

In the following table, the Percentiles column shows the percent sidechain outliers of the chain as a percentile score with respect to all X-ray entries followed by that with respect to entries of similar resolution.

The Analysed column shows the number of residues for which the sidechain conformation was analysed, and the total number of residues.

Mol	Chain	Analysed	Rotameric	Outliers	Percentiles
1	A	455/478 (95%)	447 (98%)	8 (2%)	59 74

All (8) residues with a non-rotameric sidechain are listed below:

Mol	Chain	Res	Type
1	A	262	SER
1	A	479	HIS
1	A	608	SER
1	A	625	GLN
1	A	636	LYS
1	A	637	ILE
1	A	644	THR
1	A	653	GLU

Some sidechains can be flipped to improve hydrogen bonding and reduce clashes. There are no such sidechains identified.

### 5.3.3 RNA [i](#)

There are no RNA molecules in this entry.

## 5.4 Non-standard residues in protein, DNA, RNA chains [i](#)

There are no non-standard protein/DNA/RNA residues in this entry.

## 5.5 Carbohydrates [i](#)

There are no carbohydrates in this entry.

## 5.6 Ligand geometry [i](#)

18 ligands are modelled in this entry.

In the following table, the Counts columns list the number of bonds (or angles) for which Mogul statistics could be retrieved, the number of bonds (or angles) that are observed in the model and the number of bonds (or angles) that are defined in the Chemical Component Dictionary. The Link column lists molecule types, if any, to which the group is linked. The Z score for a bond length (or angle) is the number of standard deviations the observed value is removed from the expected value. A bond length (or angle) with  $|Z| > 2$  is considered an outlier worth inspection. RMSZ is the root-mean-square of all Z scores of the bond lengths (or angles).

Mol	Type	Chain	Res	Link	Bond lengths			Bond angles		
					Counts	RMSZ	$\# Z  > 2$	Counts	RMSZ	$\# Z  > 2$
3	SO4	A	708	-	4,4,4	0.15	0	6,6,6	0.04	0
3	SO4	A	703	-	4,4,4	0.12	0	6,6,6	0.05	0
3	SO4	A	705	-	4,4,4	0.15	0	6,6,6	0.06	0
3	SO4	A	707	-	4,4,4	0.14	0	6,6,6	0.06	0
3	SO4	A	710	-	4,4,4	0.13	0	6,6,6	0.05	0
3	SO4	A	713	-	4,4,4	0.13	0	6,6,6	0.05	0
3	SO4	A	717	-	4,4,4	0.14	0	6,6,6	0.06	0
3	SO4	A	704	-	4,4,4	0.15	0	6,6,6	0.04	0
3	SO4	A	716	-	4,4,4	0.13	0	6,6,6	0.05	0
2	QA7	A	701	-	29,33,33	3.72	12 (41%)	31,49,49	1.34	3 (9%)
3	SO4	A	709	-	4,4,4	0.17	0	6,6,6	0.04	0
3	SO4	A	702	-	4,4,4	0.11	0	6,6,6	0.05	0
3	SO4	A	718	-	4,4,4	0.14	0	6,6,6	0.04	0
3	SO4	A	706	-	4,4,4	0.15	0	6,6,6	0.05	0

Mol	Type	Chain	Res	Link	Bond lengths			Bond angles		
					Counts	RMSZ	# Z  > 2	Counts	RMSZ	# Z  > 2
3	SO4	A	712	-	4,4,4	0.14	0	6,6,6	0.05	0
3	SO4	A	715	-	4,4,4	0.15	0	6,6,6	0.05	0
3	SO4	A	711	-	4,4,4	0.15	0	6,6,6	0.05	0
3	SO4	A	714	-	4,4,4	0.15	0	6,6,6	0.06	0

In the following table, the Chirals column lists the number of chiral outliers, the number of chiral centers analysed, the number of these observed in the model and the number defined in the Chemical Component Dictionary. Similar counts are reported in the Torsion and Rings columns. '-' means no outliers of that kind were identified.

Mol	Type	Chain	Res	Link	Chirals	Torsions	Rings
2	QA7	A	701	-	-	1/19/39/39	0/3/3/3

All (12) bond length outliers are listed below:

Mol	Chain	Res	Type	Atoms	Z	Observed(Å)	Ideal(Å)
2	A	701	QA7	C13-C12	-10.90	1.23	1.53
2	A	701	QA7	C13-C14	9.68	1.68	1.53
2	A	701	QA7	O25-C14	-8.31	1.29	1.41
2	A	701	QA7	O07-C06	4.97	1.42	1.37
2	A	701	QA7	C10-C11	-3.92	1.39	1.51
2	A	701	QA7	P08-O07	3.85	1.68	1.60
2	A	701	QA7	O25-C11	3.41	1.52	1.45
2	A	701	QA7	O27-C12	3.39	1.51	1.43
2	A	701	QA7	C12-C11	3.01	1.60	1.53
2	A	701	QA7	C19-N24	2.99	1.44	1.34
2	A	701	QA7	O26-C13	2.31	1.48	1.43
2	A	701	QA7	O31-C05	-2.17	1.18	1.23

All (3) bond angle outliers are listed below:

Mol	Chain	Res	Type	Atoms	Z	Observed(°)	Ideal(°)
2	A	701	QA7	N22-C21-N20	-4.22	122.08	128.68
2	A	701	QA7	O07-P08-O09	3.57	113.35	102.92
2	A	701	QA7	C12-C13-C14	2.88	105.31	100.98

There are no chirality outliers.

All (1) torsion outliers are listed below:

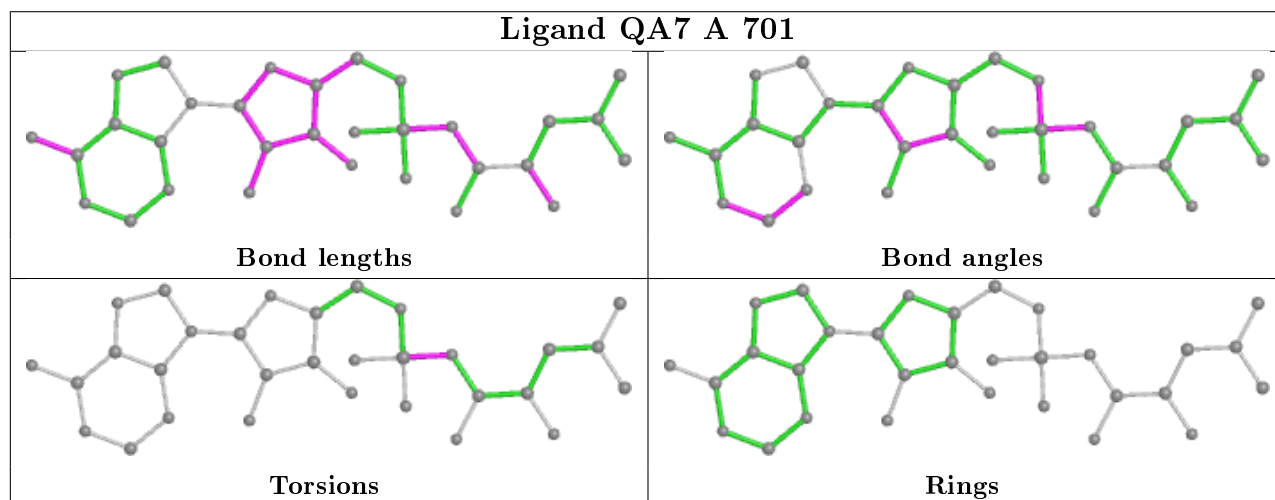
Mol	Chain	Res	Type	Atoms
2	A	701	QA7	C06-O07-P08-O09

There are no ring outliers.

1 monomer is involved in 1 short contact:

Mol	Chain	Res	Type	Clashes	Symm-Clashes
3	A	709	SO4	1	0

The following is a two-dimensional graphical depiction of Mogul quality analysis of bond lengths, bond angles, torsion angles, and ring geometry for all instances of the Ligand of Interest. In addition, ligands with molecular weight > 250 and outliers as shown on the validation Tables will also be included. For torsion angles, if less than 5% of the Mogul distribution of torsion angles is within 10 degrees of the torsion angle in question, then that torsion angle is considered an outlier. Any bond that is central to one or more torsion angles identified as an outlier by Mogul will be highlighted in the graph. For rings, the root-mean-square deviation (RMSD) between the ring in question and similar rings identified by Mogul is calculated over all ring torsion angles. If the average RMSD is greater than 60 degrees and the minimal RMSD between the ring in question and any Mogul-identified rings is also greater than 60 degrees, then that ring is considered an outlier. The outliers are highlighted in purple. The color gray indicates Mogul did not find sufficient equivalents in the CSD to analyse the geometry.



## 5.7 Other polymers [\(i\)](#)

There are no such residues in this entry.

## 5.8 Polymer linkage issues [\(i\)](#)

There are no chain breaks in this entry.

## 6 Fit of model and data

### 6.1 Protein, DNA and RNA chains

In the following table, the column labelled ‘#RSRZ> 2’ contains the number (and percentage) of RSRZ outliers, followed by percent RSRZ outliers for the chain as percentile scores relative to all X-ray entries and entries of similar resolution. The OWAB column contains the minimum, median, 95<sup>th</sup> percentile and maximum values of the occupancy-weighted average B-factor per residue. The column labelled ‘Q< 0.9’ lists the number of (and percentage) of residues with an average occupancy less than 0.9.

Mol	Chain	Analysed	<RSRZ>	#RSRZ>2	OWAB(Å <sup>2</sup> )	Q<0.9
1	A	551/576 (95%)	1.28	73 (13%) <b>3</b> <b>4</b>	33, 53, 125, 141	0

All (73) RSRZ outliers are listed below:

Mol	Chain	Res	Type	RSRZ
1	A	622	ILE	14.8
1	A	624	VAL	9.3
1	A	600	MET	9.0
1	A	575	VAL	8.2
1	A	588	PHE	8.1
1	A	616	LEU	7.7
1	A	602	ALA	7.2
1	A	585	LEU	7.2
1	A	593	LEU	7.1
1	A	586	ILE	6.8
1	A	646	TRP	6.4
1	A	569	PHE	6.4
1	A	555	ILE	6.3
1	A	610	ILE	5.8
1	A	606	ILE	5.7
1	A	559	ALA	5.7
1	A	614	MET	5.7
1	A	603	SER	5.1
1	A	571	ALA	5.0
1	A	640	ALA	4.9
1	A	596	PRO	4.8
1	A	604	GLN	4.7
1	A	611	ALA	4.6
1	A	574	SER	4.6
1	A	595	GLU	4.5
1	A	562	VAL	4.4
1	A	642	LEU	4.1

*Continued on next page...*

*Continued from previous page...*

<b>Mol</b>	<b>Chain</b>	<b>Res</b>	<b>Type</b>	<b>RSRZ</b>
1	A	563	PRO	4.1
1	A	599	ILE	4.1
1	A	566	GLU	3.9
1	A	587	LEU	3.6
1	A	619	SER	3.6
1	A	594	TYR	3.5
1	A	653	GLU	3.5
1	A	591	PRO	3.5
1	A	621	ILE	3.4
1	A	570	VAL	3.4
1	A	124	LEU	3.4
1	A	636	LYS	3.3
1	A	560	GLU	3.3
1	A	617	SER	3.2
1	A	589	PHE	3.1
1	A	568	SER	3.1
1	A	572	ALA	3.0
1	A	95	GLN	3.0
1	A	592	LYS	3.0
1	A	637	ILE	2.9
1	A	216	GLU	2.8
1	A	450	ARG	2.8
1	A	224	LEU	2.7
1	A	618	ALA	2.6
1	A	652	ALA	2.6
1	A	638	GLU	2.6
1	A	263	GLY	2.6
1	A	550	TYR	2.5
1	A	644	THR	2.4
1	A	641	GLN	2.4
1	A	223	PHE	2.4
1	A	398	LEU	2.4
1	A	334	GLN	2.3
1	A	262	SER	2.3
1	A	230	LEU	2.3
1	A	597	ALA	2.3
1	A	558	ILE	2.2
1	A	565	VAL	2.2
1	A	217	GLU	2.1
1	A	549	ASN	2.1
1	A	567	THR	2.1
1	A	442	GLU	2.0

*Continued on next page...*

*Continued from previous page...*

Mol	Chain	Res	Type	RSRZ
1	A	517	ASP	2.0
1	A	214	LEU	2.0
1	A	543	ILE	2.0
1	A	509	ALA	2.0

## 6.2 Non-standard residues in protein, DNA, RNA chains [i](#)

There are no non-standard protein/DNA/RNA residues in this entry.

## 6.3 Carbohydrates [i](#)

There are no carbohydrates in this entry.

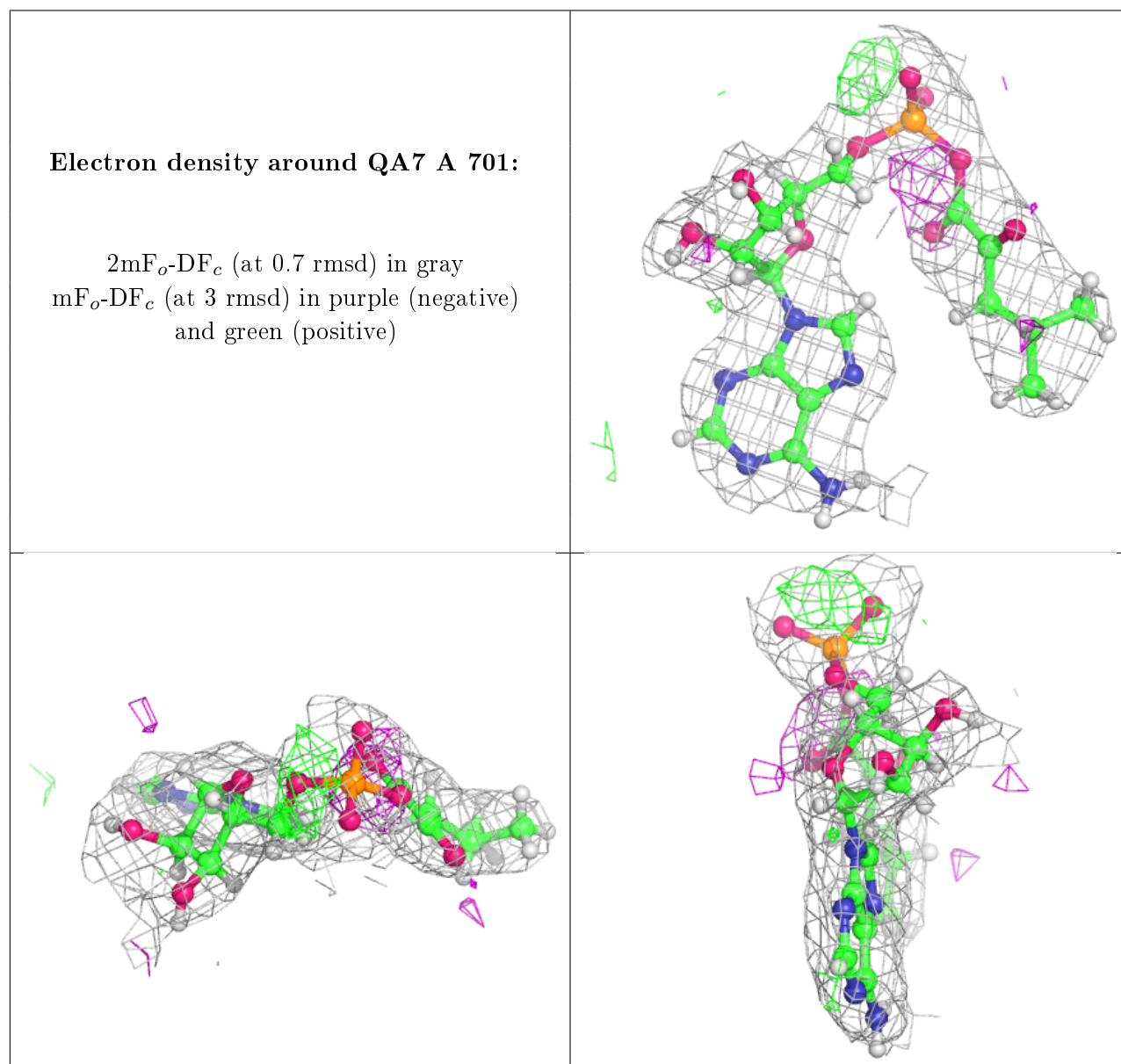
## 6.4 Ligands [i](#)

In the following table, the Atoms column lists the number of modelled atoms in the group and the number defined in the chemical component dictionary. The B-factors column lists the minimum, median, 95<sup>th</sup> percentile and maximum values of B factors of atoms in the group. The column labelled 'Q< 0.9' lists the number of atoms with occupancy less than 0.9.

Mol	Type	Chain	Res	Atoms	RSCC	RSR	B-factors(Å <sup>2</sup> )	Q<0.9
3	SO4	A	717	5/5	0.75	0.21	82,86,107,115	0
3	SO4	A	709	5/5	0.75	0.15	75,97,103,114	0
3	SO4	A	718	5/5	0.79	0.24	94,99,103,110	0
3	SO4	A	714	5/5	0.82	0.20	84,93,111,111	0
3	SO4	A	712	5/5	0.86	0.17	78,82,97,118	0
3	SO4	A	708	5/5	0.86	0.15	93,102,113,123	0
3	SO4	A	713	5/5	0.87	0.35	66,75,94,107	0
3	SO4	A	711	5/5	0.88	0.21	55,74,94,104	0
3	SO4	A	706	5/5	0.88	0.18	80,80,93,95	0
3	SO4	A	703	5/5	0.91	0.21	77,85,95,96	0
3	SO4	A	707	5/5	0.91	0.20	63,64,86,95	0
3	SO4	A	716	5/5	0.91	0.27	67,81,88,105	0
2	QA7	A	701	31/31	0.92	0.18	33,45,57,62	0
3	SO4	A	715	5/5	0.92	0.39	75,79,111,111	0
3	SO4	A	710	5/5	0.93	0.16	66,69,86,91	0
3	SO4	A	704	5/5	0.96	0.16	64,64,67,74	0
3	SO4	A	705	5/5	0.97	0.14	64,65,72,75	0
3	SO4	A	702	5/5	0.98	0.15	50,53,59,67	0



The following is a graphical depiction of the model fit to experimental electron density of all instances of the Ligand of Interest. In addition, ligands with molecular weight > 250 and outliers as shown on the geometry validation Tables will also be included. Each fit is shown from different orientation to approximate a three-dimensional view.



## 6.5 Other polymers [\(i\)](#)

There are no such residues in this entry.