



Full wwPDB X-ray Structure Validation Report ⓘ

May 13, 2020 – 07:33 pm BST

PDB ID : 3UNZ
Title : Aurora A in Complex with RPM1679
Authors : Martin, M.P.; Zhu, J.-Y.; Schonbrunn, E.
Deposited on : 2011-11-16
Resolution : 2.80 Å(reported)

This is a Full wwPDB X-ray Structure Validation Report for a publicly released PDB entry.

We welcome your comments at validation@mail.wwpdb.org

A user guide is available at

<https://www.wwpdb.org/validation/2017/XrayValidationReportHelp>

with specific help available everywhere you see the ⓘ symbol.

The following versions of software and data (see [references ⓘ](#)) were used in the production of this report:

MolProbity : 4.02b-467
Mogul : 1.8.5 (274361), CSD as541be (2020)
Xtriage (Phenix) : 1.13
EDS : 2.11
buster-report : 1.1.7 (2018)
Percentile statistics : 20191225.v01 (using entries in the PDB archive December 25th 2019)
Refmac : 5.8.0158
CCP4 : 7.0.044 (Gargrove)
Ideal geometry (proteins) : Engh & Huber (2001)
Ideal geometry (DNA, RNA) : Parkinson et al. (1996)
Validation Pipeline (wwPDB-VP) : 2.11

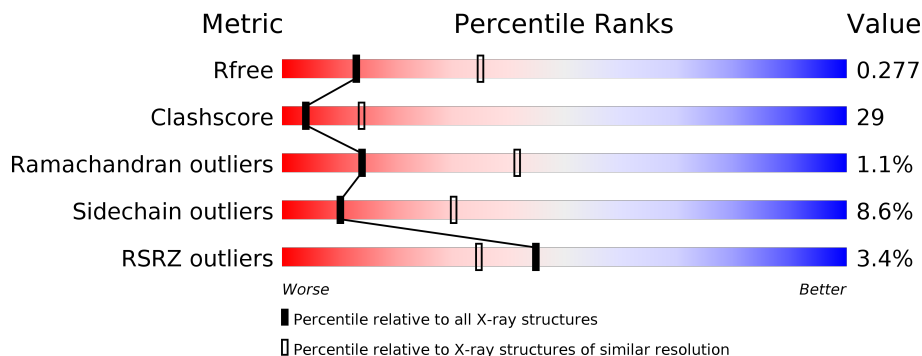
1 Overall quality at a glance

The following experimental techniques were used to determine the structure:

X-RAY DIFFRACTION

The reported resolution of this entry is 2.80 Å.

Percentile scores (ranging between 0-100) for global validation metrics of the entry are shown in the following graphic. The table shows the number of entries on which the scores are based.



Metric	Whole archive (#Entries)	Similar resolution (#Entries, resolution range(Å))
R_{free}	130704	3140 (2.80-2.80)
Clashscore	141614	3569 (2.80-2.80)
Ramachandran outliers	138981	3498 (2.80-2.80)
Sidechain outliers	138945	3500 (2.80-2.80)
RSRZ outliers	127900	3078 (2.80-2.80)

The table below summarises the geometric issues observed across the polymeric chains and their fit to the electron density. The red, orange, yellow and green segments on the lower bar indicate the fraction of residues that contain outliers for ≥ 3 , 2, 1 and 0 types of geometric quality criteria respectively. A grey segment represents the fraction of residues that are not modelled. The numeric value for each fraction is indicated below the corresponding segment, with a dot representing fractions $\leq 5\%$. The upper red bar (where present) indicates the fraction of residues that have poor fit to the electron density. The numeric value is given above the bar.

Mol	Chain	Length	Quality of chain
1	A	279	 3% 51% 37% 5% • 6%
1	B	279	 4% 47% 40% 6% • 6%

2 Entry composition i

There are 4 unique types of molecules in this entry. The entry contains 4418 atoms, of which 0 are hydrogens and 0 are deuteriums.

In the tables below, the ZeroOcc column contains the number of atoms modelled with zero occupancy, the AltConf column contains the number of residues with at least one atom in alternate conformation and the Trace column contains the number of residues modelled with at most 2 atoms.

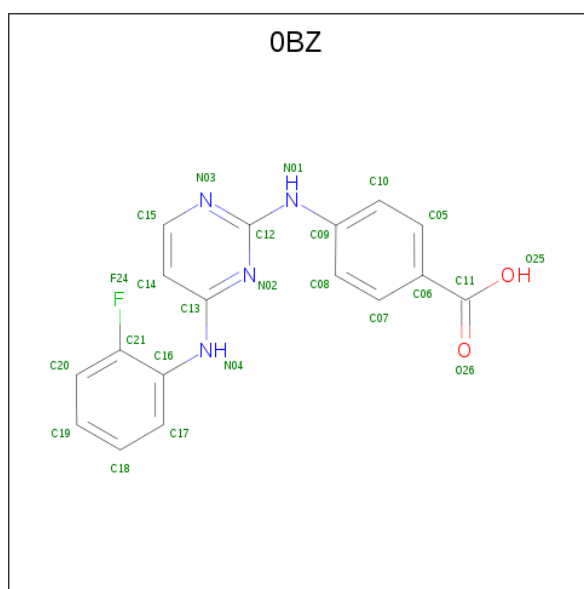
- Molecule 1 is a protein called Aurora kinase A.

Mol	Chain	Residues	Atoms					ZeroOcc	AltConf	Trace
			Total	C	N	O	S			
1	A	263	Total 2158	C 1386	N 380	O 386	S 6	0	0	0
1	B	263	Total 2158	C 1386	N 380	O 386	S 6	0	0	0

There are 2 discrepancies between the modelled and reference sequences:

Chain	Residue	Modelled	Actual	Comment	Reference
A	287	ASP	THR	ENGINEERED MUTATION	UNP O14965
B	287	ASP	THR	ENGINEERED MUTATION	UNP O14965

- Molecule 2 is 4-({4-[(2-fluorophenyl)amino]pyrimidin-2-yl}amino)benzoic acid (three-letter code: 0BZ) (formula: C₁₇H₁₃FN₄O₂).



Mol	Chain	Residues	Atoms					ZeroOcc	AltConf
			Total	C	F	N	O		
2	A	1	Total 24	C 17	F 1	N 4	O 2	0	0

Continued on next page...

Continued from previous page...

Mol	Chain	Residues	Atoms					ZeroOcc	AltConf
2	B	1	Total	C	F	N	O	0	0
			24	17	1	4	2		

- Molecule 3 is 1,2-ETHANEDIOL (three-letter code: EDO) (formula: C₂H₆O₂).



Mol	Chain	Residues	Atoms			ZeroOcc	AltConf
3	A	1	Total	C	O	0	0
			4	2	2		
3	A	1	Total	C	O	0	0
			4	2	2		
3	B	1	Total	C	O	0	0
			4	2	2		
3	B	1	Total	C	O	0	0
			4	2	2		

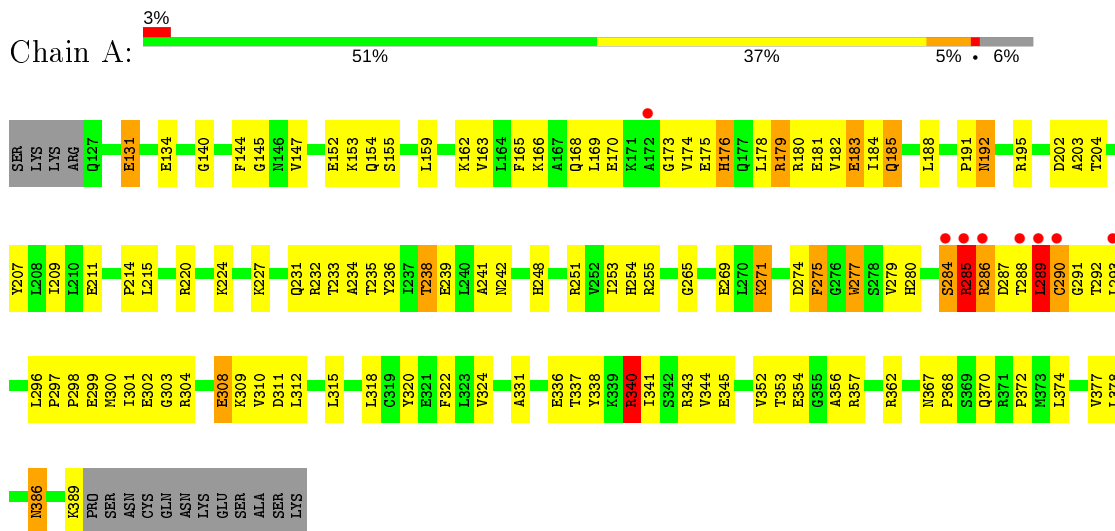
- Molecule 4 is water.

Mol	Chain	Residues	Atoms		ZeroOcc	AltConf
4	A	16	Total	O	0	0
			16	16		
4	B	22	Total	O	0	0
			22	22		

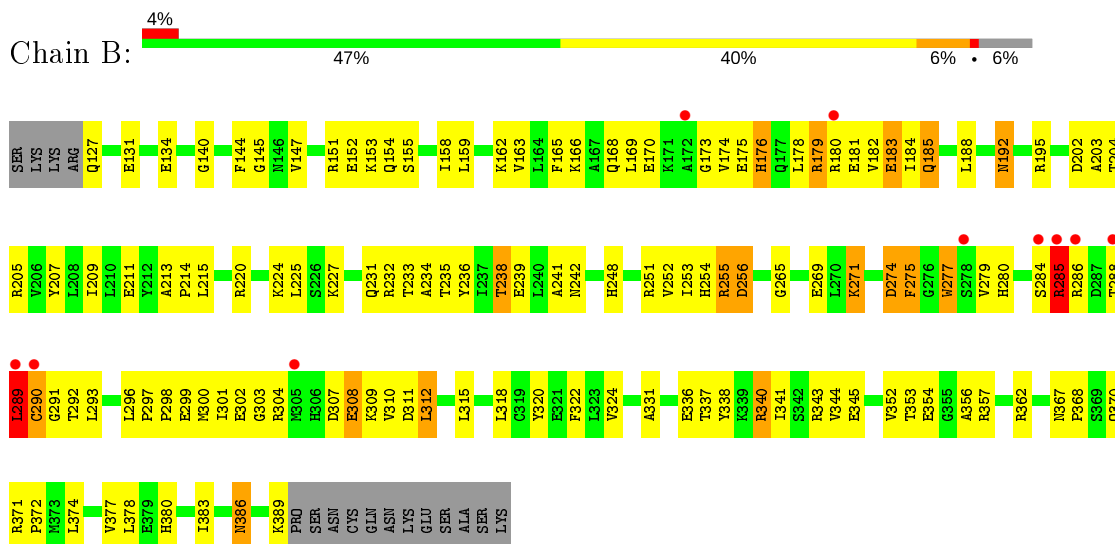
3 Residue-property plots

These plots are drawn for all protein, RNA and DNA chains in the entry. The first graphic for a chain summarises the proportions of the various outlier classes displayed in the second graphic. The second graphic shows the sequence view annotated by issues in geometry and electron density. Residues are color-coded according to the number of geometric quality criteria for which they contain at least one outlier: green = 0, yellow = 1, orange = 2 and red = 3 or more. A red dot above a residue indicates a poor fit to the electron density ($RSRZ > 2$). Stretches of 2 or more consecutive residues without any outlier are shown as a green connector. Residues present in the sample, but not in the model, are shown in grey.

- Molecule 1: Aurora kinase A



- Molecule 1: Aurora kinase A



4 Data and refinement statistics

Property	Value	Source
Space group	P 32	Depositor
Cell constants a, b, c, α , β , γ	85.78 Å 85.78 Å 76.56 Å 90.00° 90.00° 120.00°	Depositor
Resolution (Å)	18.89 – 2.80 18.89 – 2.80	Depositor EDS
% Data completeness (in resolution range)	99.6 (18.89-2.80) 99.6 (18.89-2.80)	Depositor EDS
R_{merge}	0.08	Depositor
R_{sym}	0.04	Depositor
$\langle I/\sigma(I) \rangle$ ¹	4.45 (at 2.79 Å)	Xtriage
Refinement program	PHENIX (phenix.refine: 1.7_650)	Depositor
R, R_{free}	0.231 , 0.278 0.228 , 0.277	Depositor DCC
R_{free} test set	695 reflections (4.51%)	wwPDB-VP
Wilson B-factor (Å ²)	51.8	Xtriage
Anisotropy	0.122	Xtriage
Bulk solvent k_{sol} (e/Å ³), B_{sol} (Å ²)	0.32 , 32.8	EDS
L-test for twinning ²	$\langle L \rangle = 0.50$, $\langle L^2 \rangle = 0.33$	Xtriage
Estimated twinning fraction	0.028 for -h,-k,l 0.488 for h,-h-k,-l 0.027 for -k,-h,-l	Xtriage
F_o, F_c correlation	0.92	EDS
Total number of atoms	4418	wwPDB-VP
Average B, all atoms (Å ²)	56.0	wwPDB-VP

Xtriage's analysis on translational NCS is as follows: *The largest off-origin peak in the Patterson function is 5.37% of the height of the origin peak. No significant pseudotranslation is detected.*

¹ Intensities estimated from amplitudes.

² Theoretical values of $\langle |L| \rangle$, $\langle L^2 \rangle$ for acentric reflections are 0.5, 0.333 respectively for untwinned datasets, and 0.375, 0.2 for perfectly twinned datasets.

5 Model quality i

5.1 Standard geometry i

Bond lengths and bond angles in the following residue types are not validated in this section: EDO, 0BZ

The Z score for a bond length (or angle) is the number of standard deviations the observed value is removed from the expected value. A bond length (or angle) with $|Z| > 5$ is considered an outlier worth inspection. RMSZ is the root-mean-square of all Z scores of the bond lengths (or angles).

Mol	Chain	Bond lengths		Bond angles	
		RMSZ	# Z >5	RMSZ	# Z >5
1	A	0.37	1/2212 (0.0%)	0.80	10/2990 (0.3%)
1	B	0.37	0/2212	0.76	9/2990 (0.3%)
All	All	0.37	1/4424 (0.0%)	0.78	19/5980 (0.3%)

Chiral center outliers are detected by calculating the chiral volume of a chiral center and verifying if the center is modelled as a planar moiety or with the opposite hand. A planarity outlier is detected by checking planarity of atoms in a peptide group, atoms in a mainchain group or atoms of a sidechain that are expected to be planar.

Mol	Chain	#Chirality outliers	#Planarity outliers
1	A	0	6
1	B	0	3
All	All	0	9

All (1) bond length outliers are listed below:

Mol	Chain	Res	Type	Atoms	Z	Observed(Å)	Ideal(Å)
1	A	354	GLU	CB-CG	-5.48	1.41	1.52

All (19) bond angle outliers are listed below:

Mol	Chain	Res	Type	Atoms	Z	Observed(°)	Ideal(°)
1	A	285	ARG	NE-CZ-NH2	13.33	126.97	120.30
1	B	285	ARG	NE-CZ-NH1	13.20	126.90	120.30
1	A	285	ARG	NE-CZ-NH1	-12.03	114.28	120.30
1	B	285	ARG	NE-CZ-NH2	-11.62	114.49	120.30
1	A	340	ARG	NE-CZ-NH2	11.53	126.07	120.30
1	A	340	ARG	NE-CZ-NH1	-11.06	114.77	120.30
1	B	340	ARG	NE-CZ-NH1	10.40	125.50	120.30
1	B	340	ARG	NE-CZ-NH2	-10.09	115.25	120.30

Continued on next page...

Continued from previous page...

Mol	Chain	Res	Type	Atoms	Z	Observed(°)	Ideal(°)
1	A	289	LEU	CA-CB-CG	7.41	132.34	115.30
1	B	289	LEU	CA-CB-CG	7.32	132.13	115.30
1	A	179	ARG	CA-CB-CG	7.00	128.80	113.40
1	B	179	ARG	CB-CA-C	-5.62	99.16	110.40
1	A	354	GLU	CB-CA-C	-5.62	99.17	110.40
1	A	131	GLU	CA-CB-CG	-5.46	101.38	113.40
1	A	285	ARG	CD-NE-CZ	5.43	131.21	123.60
1	B	340	ARG	CD-NE-CZ	5.42	131.19	123.60
1	B	285	ARG	CD-NE-CZ	5.36	131.10	123.60
1	A	340	ARG	CD-NE-CZ	5.31	131.04	123.60
1	B	354	GLU	CB-CA-C	-5.21	99.98	110.40

There are no chirality outliers.

All (9) planarity outliers are listed below:

Mol	Chain	Res	Type	Group
1	A	277	TRP	Peptide
1	A	284	SER	Peptide
1	A	285	ARG	Mainchain,Peptide
1	A	288	THR	Peptide
1	A	289	LEU	Peptide
1	B	277	TRP	Peptide
1	B	288	THR	Peptide
1	B	289	LEU	Peptide

5.2 Too-close contacts [i](#)

In the following table, the Non-H and H(model) columns list the number of non-hydrogen atoms and hydrogen atoms in the chain respectively. The H(added) column lists the number of hydrogen atoms added and optimized by MolProbity. The Clashes column lists the number of clashes within the asymmetric unit, whereas Symm-Clashes lists symmetry related clashes.

Mol	Chain	Non-H	H(model)	H(added)	Clashes	Symm-Clashes
1	A	2158	0	2162	131	0
1	B	2158	0	2162	138	0
2	A	24	0	12	3	0
2	B	24	0	12	4	0
3	A	8	0	12	1	0
3	B	8	0	12	1	0
4	A	16	0	0	0	0
4	B	22	0	0	0	0

Continued on next page...

Continued from previous page...

Mol	Chain	Non-H	H(model)	H(added)	Clashes	Symm-Clashes
All	All	4418	0	4372	258	0

The all-atom clashscore is defined as the number of clashes found per 1000 atoms (including hydrogen atoms). The all-atom clashscore for this structure is 29.

All (258) close contacts within the same asymmetric unit are listed below, sorted by their clash magnitude.

Atom-1	Atom-2	Interatomic distance (Å)	Clash overlap (Å)
1:B:184:ILE:HG13	1:B:185:GLN:H	1.23	1.00
1:A:184:ILE:HG13	1:A:185:GLN:H	1.23	0.98
1:B:165:PHE:HB2	1:B:168:GLN:NE2	1.79	0.98
1:A:165:PHE:HB2	1:A:168:GLN:NE2	1.79	0.97
1:B:232:ARG:O	1:B:235:THR:HG22	1.69	0.92
1:B:290:CYS:H	1:B:292:THR:HG23	1.34	0.91
1:A:290:CYS:H	1:A:292:THR:HG23	1.34	0.91
1:B:184:ILE:HG13	1:B:185:GLN:N	1.85	0.91
1:A:232:ARG:O	1:A:235:THR:HG22	1.70	0.90
1:A:293:LEU:HD11	1:A:337:THR:CG2	2.03	0.88
1:B:293:LEU:HD11	1:B:337:THR:CG2	2.03	0.88
1:B:170:GLU:HG3	1:B:175:GLU:OE1	1.73	0.87
1:A:184:ILE:HG13	1:A:185:GLN:N	1.85	0.86
1:A:170:GLU:HG3	1:A:175:GLU:OE1	1.77	0.85
1:B:165:PHE:HB2	1:B:168:GLN:HE22	1.37	0.85
1:A:338:TYR:CD1	1:B:338:TYR:CD1	2.65	0.84
1:A:165:PHE:HB2	1:A:168:GLN:HE22	1.37	0.83
1:A:367:ASN:HB3	1:A:370:GLN:HG3	1.61	0.83
1:A:176:HIS:O	1:A:179:ARG:HB3	1.78	0.81
1:B:367:ASN:HB3	1:B:370:GLN:HG3	1.61	0.81
1:B:284:SER:OG	1:B:285:ARG:N	2.14	0.80
1:B:293:LEU:CD1	1:B:337:THR:HG22	2.12	0.79
1:A:293:LEU:CD1	1:A:337:THR:HG22	2.13	0.79
1:B:293:LEU:CD1	1:B:337:THR:CG2	2.62	0.78
1:A:234:ALA:O	1:A:238:THR:HG22	1.84	0.77
1:B:234:ALA:O	1:B:238:THR:HG22	1.85	0.77
1:B:176:HIS:O	1:B:179:ARG:HB2	1.84	0.77
1:A:293:LEU:CD1	1:A:337:THR:CG2	2.62	0.76
1:B:252:VAL:HG11	1:B:255:ARG:NH2	1.99	0.76
1:A:343:ARG:HD2	1:A:345:GLU:OE1	1.87	0.75
1:B:293:LEU:HD13	1:B:341:ILE:HD12	1.68	0.75
1:B:343:ARG:HD2	1:B:345:GLU:OE1	1.87	0.74
1:A:165:PHE:CB	1:A:168:GLN:HE22	2.01	0.73

Continued on next page...

Continued from previous page...

Atom-1	Atom-2	Interatomic distance (Å)	Clash overlap (Å)
1:B:165:PHE:CB	1:B:168:GLN:HE22	2.01	0.73
1:A:297:PRO:HD2	1:A:300:MET:HB2	1.71	0.73
1:A:293:LEU:HD13	1:A:341:ILE:HD12	1.69	0.73
1:B:297:PRO:HD2	1:B:300:MET:HB2	1.71	0.72
1:B:215:LEU:HD23	1:B:265:GLY:O	1.89	0.71
1:A:215:LEU:HD23	1:A:265:GLY:O	1.90	0.71
1:A:293:LEU:HD11	1:A:337:THR:HG22	1.71	0.71
1:B:166:LYS:HA	1:B:169:LEU:HB2	1.73	0.70
1:B:353:THR:O	1:B:356:ALA:HB3	1.92	0.70
1:B:220:ARG:O	1:B:224:LYS:HD3	1.92	0.69
1:B:293:LEU:HD11	1:B:337:THR:HG22	1.70	0.69
1:A:166:LYS:HA	1:A:169:LEU:HB2	1.74	0.68
1:B:289:LEU:C	1:B:290:CYS:SG	2.72	0.68
1:A:289:LEU:C	1:A:290:CYS:SG	2.72	0.68
1:A:220:ARG:O	1:A:224:LYS:HD3	1.94	0.67
1:A:353:THR:O	1:A:356:ALA:HB3	1.95	0.67
1:A:286:ARG:HG3	1:A:287:ASP:N	2.10	0.67
1:A:168:GLN:NE2	1:A:168:GLN:H	1.93	0.66
1:A:168:GLN:CD	1:A:168:GLN:H	1.99	0.66
1:B:168:GLN:H	1:B:168:GLN:NE2	1.93	0.65
1:A:180:ARG:HG3	1:B:180:ARG:HG3	1.77	0.65
1:B:168:GLN:H	1:B:168:GLN:CD	1.99	0.65
1:A:310:VAL:HG12	1:A:311:ASP:N	2.12	0.64
1:A:297:PRO:HG2	1:A:310:VAL:HG22	1.80	0.64
1:B:252:VAL:HG11	1:B:255:ARG:HH21	1.61	0.63
1:A:286:ARG:HG3	1:A:287:ASP:H	1.63	0.63
1:B:310:VAL:HG12	1:B:311:ASP:N	2.12	0.63
1:A:340:ARG:NH2	1:A:345:GLU:OE2	2.29	0.63
1:B:168:GLN:N	1:B:168:GLN:CD	2.53	0.62
1:B:192:ASN:N	1:B:192:ASN:HD22	1.95	0.62
1:B:293:LEU:HD13	1:B:341:ILE:CD1	2.29	0.62
1:A:293:LEU:HD13	1:A:341:ILE:CD1	2.30	0.62
1:B:297:PRO:HG2	1:B:310:VAL:HG22	1.80	0.62
1:A:202:ASP:CG	1:A:203:ALA:H	2.02	0.62
1:B:202:ASP:CG	1:B:203:ALA:H	2.02	0.61
1:A:340:ARG:HD3	1:A:340:ARG:N	2.14	0.61
1:B:147:VAL:HG22	1:B:162:LYS:HG3	1.83	0.61
1:A:168:GLN:CD	1:A:168:GLN:N	2.53	0.61
1:B:178:LEU:HD12	1:B:277:TRP:CH2	2.36	0.61
1:A:147:VAL:HG22	1:A:162:LYS:HG3	1.82	0.60
1:B:289:LEU:O	1:B:290:CYS:SG	2.59	0.60

Continued on next page...

Continued from previous page...

Atom-1	Atom-2	Interatomic distance (Å)	Clash overlap (Å)
1:A:362:ARG:HG2	1:A:372:PRO:HG3	1.83	0.60
1:A:178:LEU:HD12	1:A:277:TRP:CH2	2.37	0.60
1:B:362:ARG:HG2	1:B:372:PRO:HG3	1.83	0.60
1:B:181:GLU:HA	1:B:184:ILE:HG12	1.84	0.60
1:A:289:LEU:O	1:A:290:CYS:SG	2.59	0.60
1:A:232:ARG:O	1:A:235:THR:CG2	2.48	0.59
1:B:131:GLU:O	1:B:153:LYS:HD2	2.01	0.59
1:A:131:GLU:O	1:A:153:LYS:HD2	2.01	0.59
1:A:192:ASN:N	1:A:192:ASN:HD22	2.01	0.59
1:B:344:VAL:O	1:B:344:VAL:HG12	2.04	0.58
1:A:374:LEU:O	1:A:377:VAL:HB	2.03	0.58
1:B:374:LEU:O	1:B:377:VAL:HB	2.02	0.58
1:B:202:ASP:OD1	1:B:203:ALA:N	2.37	0.57
1:B:284:SER:O	1:B:285:ARG:CB	2.52	0.57
1:A:181:GLU:HA	1:A:184:ILE:HG12	1.85	0.57
1:A:204:THR:O	1:A:204:THR:HG22	2.04	0.57
1:A:344:VAL:O	1:A:344:VAL:HG12	2.03	0.56
1:A:170:GLU:OE2	1:B:251:ARG:NH1	2.39	0.56
2:A:2:OBZ:N02	2:A:2:OBZ:H6	2.21	0.56
1:A:182:VAL:HG12	1:A:275:PHE:HZ	1.71	0.56
1:A:338:TYR:CE1	1:B:338:TYR:CD1	2.94	0.56
1:A:338:TYR:CD1	1:B:338:TYR:CE1	2.93	0.56
1:B:297:PRO:HG2	1:B:300:MET:HG3	1.87	0.55
1:B:374:LEU:H	3:B:4:EDO:H12	1.72	0.55
1:B:182:VAL:HG12	1:B:275:PHE:HZ	1.72	0.55
1:A:297:PRO:HG2	1:A:300:MET:HG3	1.88	0.54
2:B:1:OBZ:N02	2:B:1:OBZ:H6	2.22	0.54
1:B:232:ARG:O	1:B:235:THR:CG2	2.48	0.54
1:A:233:THR:HG23	1:A:322:PHE:HD2	1.73	0.54
1:B:241:ALA:HB3	1:B:378:LEU:HD21	1.90	0.54
1:A:166:LYS:HA	1:A:169:LEU:HD22	1.89	0.53
1:A:202:ASP:OD1	1:A:203:ALA:N	2.37	0.53
1:B:233:THR:HG23	1:B:322:PHE:HD2	1.73	0.53
1:A:251:ARG:NH1	1:B:170:GLU:OE2	2.41	0.53
1:A:241:ALA:HB3	1:A:378:LEU:HD21	1.91	0.53
1:B:252:VAL:CG1	1:B:255:ARG:NH2	2.71	0.53
1:B:159:LEU:HD13	1:B:209:ILE:HG23	1.92	0.52
1:B:289:LEU:HA	1:B:291:GLY:H	1.74	0.52
1:B:293:LEU:CD1	1:B:337:THR:HG21	2.37	0.52
1:A:289:LEU:HA	1:A:291:GLY:H	1.74	0.52
1:B:192:ASN:OD1	1:B:239:GLU:HG2	2.09	0.52

Continued on next page...

Continued from previous page...

Atom-1	Atom-2	Interatomic distance (Å)	Clash overlap (Å)
1:A:299:GLU:OE2	1:A:368:PRO:HG3	2.09	0.52
1:B:166:LYS:HA	1:B:169:LEU:HD22	1.89	0.52
1:A:165:PHE:O	1:A:204:THR:O	2.28	0.52
1:A:293:LEU:CD1	1:A:337:THR:HG21	2.37	0.52
1:A:331:ALA:HB1	1:A:336:GLU:HG2	1.92	0.52
1:A:159:LEU:HD13	1:A:209:ILE:HG23	1.91	0.51
1:B:293:LEU:CD1	1:B:341:ILE:CD1	2.88	0.51
1:B:127:GLN:O	1:B:127:GLN:HG2	2.11	0.51
1:B:165:PHE:O	1:B:204:THR:O	2.28	0.51
1:B:299:GLU:OE2	1:B:368:PRO:HG3	2.10	0.51
1:A:338:TYR:HD1	1:B:338:TYR:CE1	2.29	0.51
1:B:293:LEU:CD1	1:B:341:ILE:HD12	2.40	0.51
1:A:293:LEU:CD1	1:A:341:ILE:CD1	2.88	0.51
1:B:192:ASN:OD1	1:B:239:GLU:HB3	2.10	0.51
1:B:331:ALA:HB1	1:B:336:GLU:HG2	1.92	0.50
1:B:235:THR:HG23	1:B:236:TYR:N	2.27	0.50
1:A:338:TYR:CE1	1:B:338:TYR:HD1	2.29	0.50
1:A:374:LEU:H	3:A:3:EDO:H21	1.76	0.50
1:A:293:LEU:HD12	1:A:337:THR:CG2	2.42	0.49
1:A:145:GLY:HA3	1:A:163:VAL:O	2.12	0.49
1:A:191:PRO:C	1:A:192:ASN:HD22	2.16	0.49
1:B:140:GLY:HA3	1:B:279:VAL:HG12	1.94	0.49
1:A:140:GLY:HA3	1:A:279:VAL:HG12	1.94	0.49
1:B:204:THR:OG1	1:B:205:ARG:NH1	2.45	0.49
1:B:242:ASN:HD22	1:B:389:LYS:NZ	2.11	0.48
1:A:180:ARG:HE	1:B:180:ARG:HE	1.62	0.48
1:A:293:LEU:CD1	1:A:341:ILE:HD12	2.41	0.48
1:B:145:GLY:HA3	1:B:163:VAL:O	2.13	0.48
1:B:192:ASN:OD1	1:B:239:GLU:CB	2.62	0.48
1:A:170:GLU:O	1:A:173:GLY:N	2.44	0.48
1:A:242:ASN:HD22	1:A:389:LYS:NZ	2.11	0.48
1:A:302:GLU:OE2	1:A:304:ARG:NH2	2.45	0.48
1:B:302:GLU:OE2	1:B:304:ARG:NH2	2.46	0.47
1:B:192:ASN:O	1:B:271:LYS:HA	2.13	0.47
1:A:312:LEU:HD22	1:A:372:PRO:O	2.14	0.47
1:A:184:ILE:CG1	1:A:185:GLN:N	2.68	0.47
1:A:192:ASN:O	1:A:271:LYS:HA	2.13	0.47
1:A:310:VAL:CG1	1:A:311:ASP:N	2.78	0.47
1:B:298:PRO:O	1:B:302:GLU:HB2	2.15	0.47
1:A:235:THR:HG23	1:A:236:TYR:N	2.29	0.47
1:B:293:LEU:HD11	1:B:337:THR:CB	2.44	0.47

Continued on next page...

Continued from previous page...

Atom-1	Atom-2	Interatomic distance (Å)	Clash overlap (Å)
1:A:293:LEU:HD11	1:A:337:THR:CB	2.45	0.46
1:B:127:GLN:OE1	1:B:127:GLN:N	2.49	0.46
1:B:293:LEU:HD12	1:B:337:THR:CG2	2.42	0.46
1:B:312:LEU:HD22	1:B:372:PRO:O	2.15	0.46
1:A:308:GLU:HG2	1:A:309:LYS:N	2.30	0.46
1:B:293:LEU:HD11	1:B:337:THR:HG21	1.93	0.46
1:A:248:HIS:CE1	1:A:308:GLU:HB2	2.51	0.46
1:A:298:PRO:O	1:A:302:GLU:HB2	2.16	0.46
1:A:248:HIS:NE2	1:A:308:GLU:HB2	2.31	0.46
1:B:165:PHE:O	1:B:166:LYS:HB3	2.16	0.46
1:B:170:GLU:O	1:B:173:GLY:N	2.46	0.46
1:B:254:HIS:O	1:B:254:HIS:CG	2.69	0.45
1:B:308:GLU:HG2	1:B:309:LYS:N	2.31	0.45
1:B:301:ILE:HD12	1:B:341:ILE:HG21	1.98	0.45
1:B:362:ARG:O	1:B:372:PRO:HD3	2.15	0.45
1:A:232:ARG:C	1:A:235:THR:HG22	2.37	0.45
1:A:269:GLU:N	1:A:269:GLU:OE1	2.43	0.45
1:A:362:ARG:O	1:A:372:PRO:HD3	2.17	0.45
1:A:144:PHE:CE2	1:A:277:TRP:HB2	2.52	0.45
1:B:180:ARG:O	1:B:184:ILE:HG23	2.16	0.45
1:B:248:HIS:NE2	1:B:308:GLU:HB2	2.32	0.45
1:A:192:ASN:OD1	1:A:239:GLU:HG2	2.17	0.45
1:B:362:ARG:HG2	1:B:372:PRO:CG	2.47	0.45
1:A:181:GLU:HG2	1:A:275:PHE:CE1	2.51	0.45
1:B:248:HIS:CE1	1:B:308:GLU:HB2	2.52	0.45
1:B:181:GLU:HG2	1:B:275:PHE:CE1	2.52	0.45
1:B:231:GLN:HA	1:B:386:ASN:O	2.17	0.45
1:A:165:PHE:O	1:A:166:LYS:HB3	2.16	0.45
1:A:211:GLU:O	2:A:2:0BZ:H8	2.17	0.45
1:A:254:HIS:CG	1:A:254:HIS:O	2.70	0.45
1:B:144:PHE:CE2	1:B:277:TRP:HB2	2.52	0.45
1:A:231:GLN:HA	1:A:386:ASN:O	2.17	0.44
1:B:144:PHE:CD2	1:B:277:TRP:HE3	2.36	0.44
1:B:134:GLU:HG3	1:B:153:LYS:HG2	1.99	0.44
1:A:180:ARG:O	1:A:183:GLU:HB3	2.18	0.44
1:A:362:ARG:HG2	1:A:372:PRO:CG	2.46	0.44
1:B:318:LEU:HD23	1:B:318:LEU:HA	1.74	0.44
1:B:269:GLU:OE1	1:B:269:GLU:N	2.44	0.43
1:A:134:GLU:HG3	1:A:153:LYS:HG2	1.99	0.43
1:A:303:GLY:HA2	1:B:296:LEU:HD11	2.00	0.43
1:A:296:LEU:HD11	1:B:303:GLY:HA2	2.00	0.43

Continued on next page...

Continued from previous page...

Atom-1	Atom-2	Interatomic distance (Å)	Clash overlap (Å)
1:A:144:PHE:CD2	1:A:277:TRP:HE3	2.37	0.43
1:A:301:ILE:HD12	1:A:341:ILE:HG21	1.99	0.43
1:B:202:ASP:CG	1:B:203:ALA:N	2.72	0.43
1:B:192:ASN:ND2	1:B:192:ASN:N	2.65	0.43
1:A:181:GLU:O	1:A:184:ILE:HG13	2.19	0.43
1:B:248:HIS:CE1	1:B:253:ILE:HG22	2.54	0.43
1:B:320:TYR:CZ	1:B:324:VAL:HG21	2.54	0.43
1:B:338:TYR:CD2	1:B:338:TYR:C	2.92	0.43
1:A:131:GLU:H	1:A:131:GLU:HG2	1.22	0.43
1:A:338:TYR:C	1:A:338:TYR:CD2	2.91	0.43
1:A:352:VAL:O	1:A:357:ARG:NH1	2.51	0.42
1:A:180:ARG:O	1:A:184:ILE:HG23	2.19	0.42
1:A:293:LEU:HD11	1:A:337:THR:HG21	1.93	0.42
1:A:320:TYR:CZ	1:A:324:VAL:HG21	2.54	0.42
1:B:178:LEU:HD12	1:B:277:TRP:CZ3	2.54	0.42
1:A:303:GLY:CA	1:B:296:LEU:HD11	2.48	0.42
1:B:181:GLU:O	1:B:184:ILE:HG13	2.19	0.42
1:A:162:LYS:O	1:A:207:TYR:HA	2.20	0.42
1:A:185:GLN:HA	1:A:188:LEU:HD13	2.00	0.42
1:B:352:VAL:O	1:B:357:ARG:NH1	2.52	0.42
1:A:242:ASN:HD22	1:A:389:LYS:HZ1	1.67	0.42
1:B:214:PRO:HB2	1:B:215:LEU:HD22	2.02	0.42
1:B:256:ASP:N	1:B:274:ASP:OD1	2.46	0.42
1:B:185:GLN:HA	1:B:188:LEU:HD13	2.00	0.42
1:A:296:LEU:HA	1:A:297:PRO:HD3	1.81	0.42
2:B:1:0BZ:N02	2:B:1:0BZ:C10	2.83	0.42
1:A:248:HIS:CE1	1:A:253:ILE:HG22	2.55	0.42
1:A:178:LEU:HD12	1:A:277:TRP:CZ3	2.54	0.42
1:B:289:LEU:HD12	1:B:292:THR:CG2	2.49	0.42
1:A:214:PRO:HB2	1:A:215:LEU:HD22	2.02	0.41
1:B:162:LYS:O	1:B:207:TYR:HA	2.20	0.41
1:B:233:THR:HG23	1:B:322:PHE:CD2	2.54	0.41
1:A:175:GLU:HG2	1:B:251:ARG:HH11	1.84	0.41
1:B:284:SER:O	1:B:285:ARG:HB3	2.20	0.41
1:A:251:ARG:HH11	1:B:175:GLU:HG2	1.85	0.41
1:A:296:LEU:HD11	1:B:303:GLY:CA	2.49	0.41
1:A:202:ASP:CG	1:A:203:ALA:N	2.72	0.41
1:A:204:THR:O	1:A:204:THR:CG2	2.68	0.41
1:B:213:ALA:O	2:B:1:0BZ:N01	2.45	0.41
1:A:284:SER:O	1:A:285:ARG:HB2	2.20	0.41
1:B:211:GLU:O	2:B:1:0BZ:H8	2.20	0.41

Continued on next page...

Continued from previous page...

Atom-1	Atom-2	Interatomic distance (Å)	Clash overlap (Å)
1:B:293:LEU:HD12	1:B:337:THR:HG22	2.00	0.41
1:B:274:ASP:HB3	1:B:275:PHE:H	1.62	0.41
1:A:154:GLN:HG2	1:A:155:SER:N	2.35	0.41
1:A:176:HIS:HA	1:A:179:ARG:HE	1.85	0.41
1:B:309:LYS:NZ	1:B:371:ARG:O	2.46	0.41
2:A:2:0BZ:N02	2:A:2:0BZ:C10	2.84	0.41
1:B:140:GLY:C	1:B:279:VAL:CG1	2.89	0.41
1:B:154:GLN:HG2	1:B:155:SER:N	2.36	0.41
1:B:225:LEU:N	1:B:225:LEU:HD23	2.36	0.41
1:B:380:HIS:O	1:B:383:ILE:HB	2.21	0.41
1:B:180:ARG:O	1:B:183:GLU:HB3	2.20	0.41
1:B:307:ASP:OD1	1:B:309:LYS:HB2	2.20	0.41
1:A:140:GLY:C	1:A:279:VAL:CG1	2.89	0.40
1:A:289:LEU:HD12	1:A:292:THR:CG2	2.51	0.40
1:A:239:GLU:HA	1:A:389:LYS:HZ3	1.87	0.40
1:B:232:ARG:C	1:B:235:THR:HG22	2.37	0.40
1:A:192:ASN:N	1:A:192:ASN:ND2	2.68	0.40
1:B:151:ARG:HB3	1:B:158:ILE:HG12	2.03	0.40
1:A:318:LEU:HD23	1:A:318:LEU:HA	1.74	0.40
1:B:284:SER:O	1:B:285:ARG:HB2	2.20	0.40

There are no symmetry-related clashes.

5.3 Torsion angles [i](#)

5.3.1 Protein backbone [i](#)

In the following table, the Percentiles column shows the percent Ramachandran outliers of the chain as a percentile score with respect to all X-ray entries followed by that with respect to entries of similar resolution.

The Analysed column shows the number of residues for which the backbone conformation was analysed, and the total number of residues.

Mol	Chain	Analysed	Favoured	Allowed	Outliers	Percentiles	
1	A	261/279 (94%)	236 (90%)	22 (8%)	3 (1%)	14	41
1	B	261/279 (94%)	235 (90%)	23 (9%)	3 (1%)	14	41
All	All	522/558 (94%)	471 (90%)	45 (9%)	6 (1%)	14	41

All (6) Ramachandran outliers are listed below:

Mol	Chain	Res	Type
1	A	285	ARG
1	A	286	ARG
1	B	285	ARG
1	B	286	ARG
1	A	290	CYS
1	B	290	CYS

5.3.2 Protein sidechains [i](#)

In the following table, the Percentiles column shows the percent sidechain outliers of the chain as a percentile score with respect to all X-ray entries followed by that with respect to entries of similar resolution.

The Analysed column shows the number of residues for which the sidechain conformation was analysed, and the total number of residues.

Mol	Chain	Analysed	Rotameric	Outliers	Percentiles	
1	A	232/247 (94%)	213 (92%)	19 (8%)	11	33
1	B	232/247 (94%)	211 (91%)	21 (9%)	9	27
All	All	464/494 (94%)	424 (91%)	40 (9%)	10	30

All (40) residues with a non-rotameric sidechain are listed below:

Mol	Chain	Res	Type
1	A	152	GLU
1	A	174	VAL
1	A	176	HIS
1	A	183	GLU
1	A	185	GLN
1	A	192	ASN
1	A	195	ARG
1	A	227	LYS
1	A	238	THR
1	A	255	ARG
1	A	271	LYS
1	A	274	ASP
1	A	275	PHE
1	A	280	HIS
1	A	289	LEU
1	A	308	GLU
1	A	315	LEU
1	A	340	ARG

Continued on next page...

Continued from previous page...

Mol	Chain	Res	Type
1	A	386	ASN
1	B	152	GLU
1	B	174	VAL
1	B	176	HIS
1	B	183	GLU
1	B	185	GLN
1	B	192	ASN
1	B	195	ARG
1	B	227	LYS
1	B	238	THR
1	B	255	ARG
1	B	256	ASP
1	B	271	LYS
1	B	274	ASP
1	B	275	PHE
1	B	280	HIS
1	B	289	LEU
1	B	308	GLU
1	B	312	LEU
1	B	315	LEU
1	B	340	ARG
1	B	386	ASN

Some sidechains can be flipped to improve hydrogen bonding and reduce clashes. All (6) such sidechains are listed below:

Mol	Chain	Res	Type
1	A	168	GLN
1	A	242	ASN
1	A	254	HIS
1	B	168	GLN
1	B	242	ASN
1	B	254	HIS

5.3.3 RNA [i](#)

There are no RNA molecules in this entry.

5.4 Non-standard residues in protein, DNA, RNA chains [i](#)

There are no non-standard protein/DNA/RNA residues in this entry.

5.5 Carbohydrates [i](#)

There are no carbohydrates in this entry.

5.6 Ligand geometry [i](#)

6 ligands are modelled in this entry.

In the following table, the Counts columns list the number of bonds (or angles) for which Mogul statistics could be retrieved, the number of bonds (or angles) that are observed in the model and the number of bonds (or angles) that are defined in the Chemical Component Dictionary. The Link column lists molecule types, if any, to which the group is linked. The Z score for a bond length (or angle) is the number of standard deviations the observed value is removed from the expected value. A bond length (or angle) with $|Z| > 2$ is considered an outlier worth inspection. RMSZ is the root-mean-square of all Z scores of the bond lengths (or angles).

Mol	Type	Chain	Res	Link	Bond lengths			Bond angles		
					Counts	RMSZ	# Z > 2	Counts	RMSZ	# Z > 2
2	0BZ	A	2	-	24,26,26	1.12	3 (12%)	32,35,35	2.16	7 (21%)
2	0BZ	B	1	-	24,26,26	1.13	3 (12%)	32,35,35	2.17	10 (31%)
3	EDO	A	1	-	3,3,3	0.46	0	2,2,2	0.32	0
3	EDO	B	2	-	3,3,3	0.47	0	2,2,2	0.39	0
3	EDO	A	3	-	3,3,3	0.46	0	2,2,2	0.44	0
3	EDO	B	4	-	3,3,3	0.46	0	2,2,2	0.43	0

In the following table, the Chirals column lists the number of chiral outliers, the number of chiral centers analysed, the number of these observed in the model and the number defined in the Chemical Component Dictionary. Similar counts are reported in the Torsion and Rings columns. '-' means no outliers of that kind were identified.

Mol	Type	Chain	Res	Link	Chirals	Torsions	Rings
2	0BZ	A	2	-	-	2/8/12/12	0/3/3/3
2	0BZ	B	1	-	-	4/8/12/12	0/3/3/3
3	EDO	A	1	-	-	0/1/1/1	-
3	EDO	B	2	-	-	0/1/1/1	-
3	EDO	A	3	-	-	1/1/1/1	-
3	EDO	B	4	-	-	1/1/1/1	-

All (6) bond length outliers are listed below:

Mol	Chain	Res	Type	Atoms	Z	Observed(Å)	Ideal(Å)
2	B	1	0BZ	C12-N01	3.52	1.43	1.36
2	A	2	0BZ	C12-N01	3.40	1.43	1.36

Continued on next page...

Continued from previous page...

Mol	Chain	Res	Type	Atoms	Z	Observed(Å)	Ideal(Å)
2	B	1	0BZ	C13-N04	2.86	1.43	1.38
2	A	2	0BZ	C13-N04	2.64	1.43	1.38
2	A	2	0BZ	C06-C11	2.36	1.49	1.47
2	B	1	0BZ	C06-C11	2.07	1.49	1.47

All (17) bond angle outliers are listed below:

Mol	Chain	Res	Type	Atoms	Z	Observed(°)	Ideal(°)
2	B	1	0BZ	C15-N03-C12	5.88	120.67	115.45
2	A	2	0BZ	C15-N03-C12	5.80	120.60	115.45
2	A	2	0BZ	C15-C14-C13	5.09	120.09	116.76
2	B	1	0BZ	N03-C12-N02	-4.97	121.84	126.55
2	B	1	0BZ	C15-C14-C13	4.85	119.94	116.76
2	A	2	0BZ	C14-C15-N03	-4.59	118.26	123.96
2	A	2	0BZ	N03-C12-N02	-4.52	122.26	126.55
2	B	1	0BZ	C14-C15-N03	-4.40	118.50	123.96
2	A	2	0BZ	C17-C16-C21	2.90	120.09	117.17
2	B	1	0BZ	C17-C16-C21	2.85	120.04	117.17
2	A	2	0BZ	C20-C21-C16	-2.81	120.05	123.24
2	B	1	0BZ	C14-C13-N02	-2.77	118.50	123.16
2	B	1	0BZ	C20-C21-C16	-2.76	120.10	123.24
2	A	2	0BZ	C14-C13-N02	-2.67	118.66	123.16
2	B	1	0BZ	C12-N02-C13	2.15	120.57	116.28
2	B	1	0BZ	C16-N04-C13	-2.12	119.97	126.81
2	B	1	0BZ	F24-C21-C16	2.03	120.05	117.50

There are no chirality outliers.

All (8) torsion outliers are listed below:

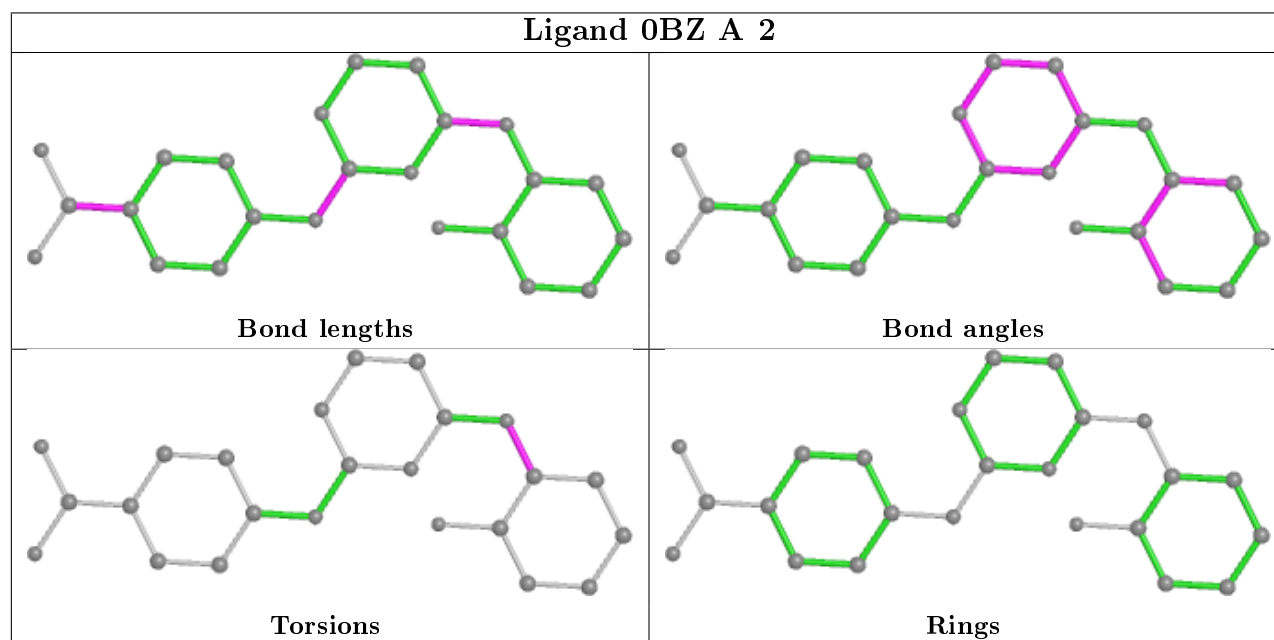
Mol	Chain	Res	Type	Atoms
2	A	2	0BZ	C21-C16-N04-C13
2	A	2	0BZ	C17-C16-N04-C13
2	B	1	0BZ	C17-C16-N04-C13
2	B	1	0BZ	C21-C16-N04-C13
3	A	3	EDO	O1-C1-C2-O2
3	B	4	EDO	O1-C1-C2-O2
2	B	1	0BZ	C14-C13-N04-C16
2	B	1	0BZ	N02-C13-N04-C16

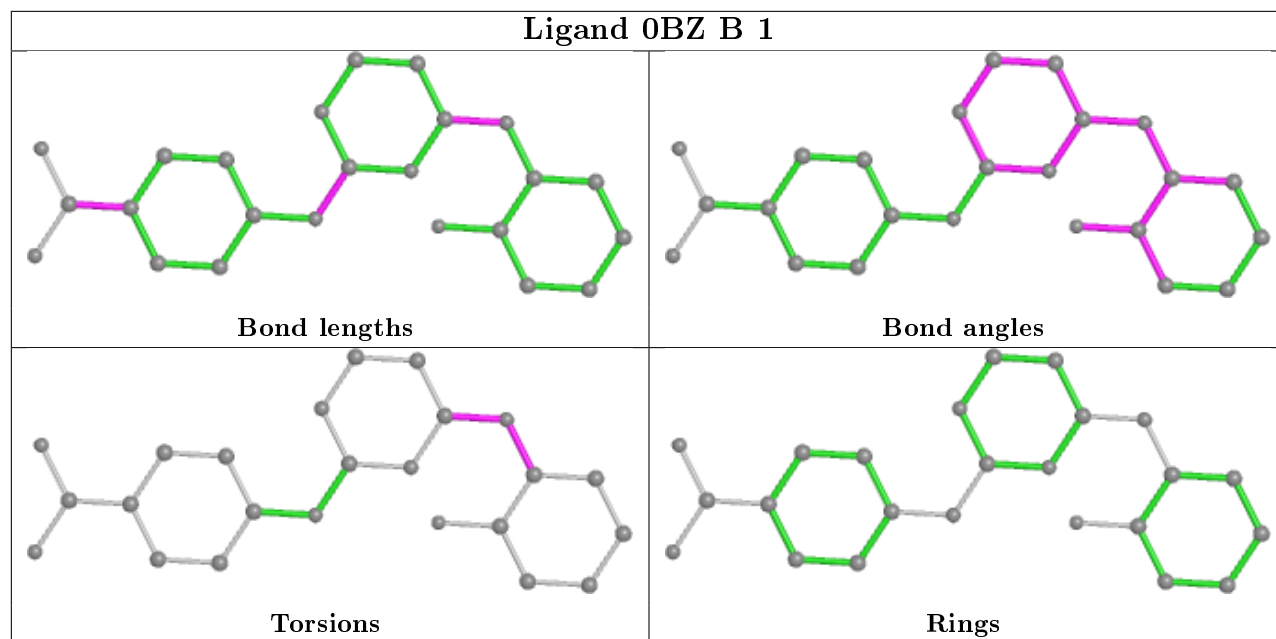
There are no ring outliers.

4 monomers are involved in 9 short contacts:

Mol	Chain	Res	Type	Clashes	Symm-Clashes
2	A	2	0BZ	3	0
2	B	1	0BZ	4	0
3	A	3	EDO	1	0
3	B	4	EDO	1	0

The following is a two-dimensional graphical depiction of Mogul quality analysis of bond lengths, bond angles, torsion angles, and ring geometry for all instances of the Ligand of Interest. In addition, ligands with molecular weight > 250 and outliers as shown on the validation Tables will also be included. For torsion angles, if less than 5% of the Mogul distribution of torsion angles is within 10 degrees of the torsion angle in question, then that torsion angle is considered an outlier. Any bond that is central to one or more torsion angles identified as an outlier by Mogul will be highlighted in the graph. For rings, the root-mean-square deviation (RMSD) between the ring in question and similar rings identified by Mogul is calculated over all ring torsion angles. If the average RMSD is greater than 60 degrees and the minimal RMSD between the ring in question and any Mogul-identified rings is also greater than 60 degrees, then that ring is considered an outlier. The outliers are highlighted in purple. The color gray indicates Mogul did not find sufficient equivalents in the CSD to analyse the geometry.





5.7 Other polymers [i](#)

There are no such residues in this entry.

5.8 Polymer linkage issues [i](#)

There are no chain breaks in this entry.

6 Fit of model and data [i](#)

6.1 Protein, DNA and RNA chains [i](#)

In the following table, the column labelled '#RSRZ > 2' contains the number (and percentage) of RSRZ outliers, followed by percent RSRZ outliers for the chain as percentile scores relative to all X-ray entries and entries of similar resolution. The OWAB column contains the minimum, median, 95th percentile and maximum values of the occupancy-weighted average B-factor per residue. The column labelled 'Q < 0.9' lists the number of (and percentage) of residues with an average occupancy less than 0.9.

Mol	Chain	Analysed	<RSRZ>	#RSRZ>2	OWAB(Å ²)	Q<0.9
1	A	263/279 (94%)	-0.09	8 (3%) 50 40	27, 49, 102, 186	0
1	B	263/279 (94%)	-0.08	10 (3%) 40 30	27, 50, 101, 185	0
All	All	526/558 (94%)	-0.09	18 (3%) 45 35	27, 50, 102, 186	0

All (18) RSRZ outliers are listed below:

Mol	Chain	Res	Type	RSRZ
1	A	285	ARG	6.4
1	A	284	SER	5.9
1	A	290	CYS	5.9
1	A	288	THR	5.4
1	B	290	CYS	5.0
1	B	284	SER	4.5
1	B	288	THR	3.8
1	B	285	ARG	3.6
1	A	289	LEU	3.6
1	B	286	ARG	3.3
1	B	172	ALA	3.3
1	B	289	LEU	2.8
1	A	172	ALA	2.7
1	A	286	ARG	2.7
1	B	305	MET	2.2
1	B	278	SER	2.2
1	B	180	ARG	2.2
1	A	293	LEU	2.0

6.2 Non-standard residues in protein, DNA, RNA chains [i](#)

There are no non-standard protein/DNA/RNA residues in this entry.

6.3 Carbohydrates [i](#)

There are no carbohydrates in this entry.

6.4 Ligands [i](#)

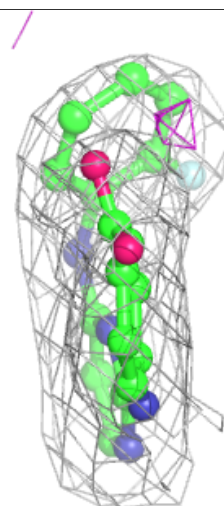
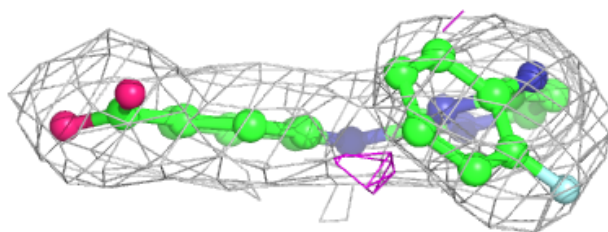
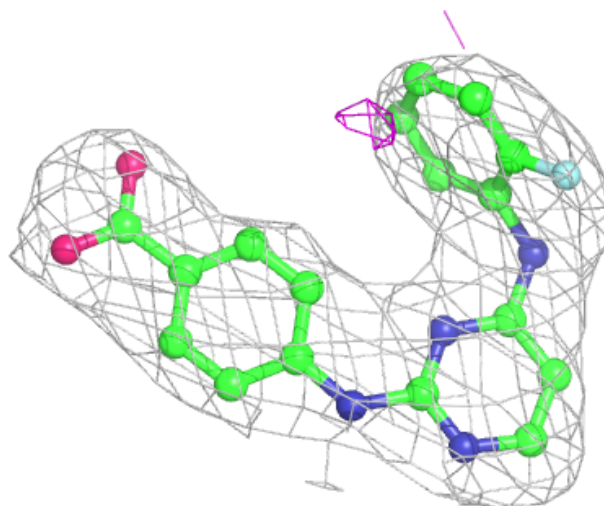
In the following table, the Atoms column lists the number of modelled atoms in the group and the number defined in the chemical component dictionary. The B-factors column lists the minimum, median, 95th percentile and maximum values of B factors of atoms in the group. The column labelled 'Q< 0.9' lists the number of atoms with occupancy less than 0.9.

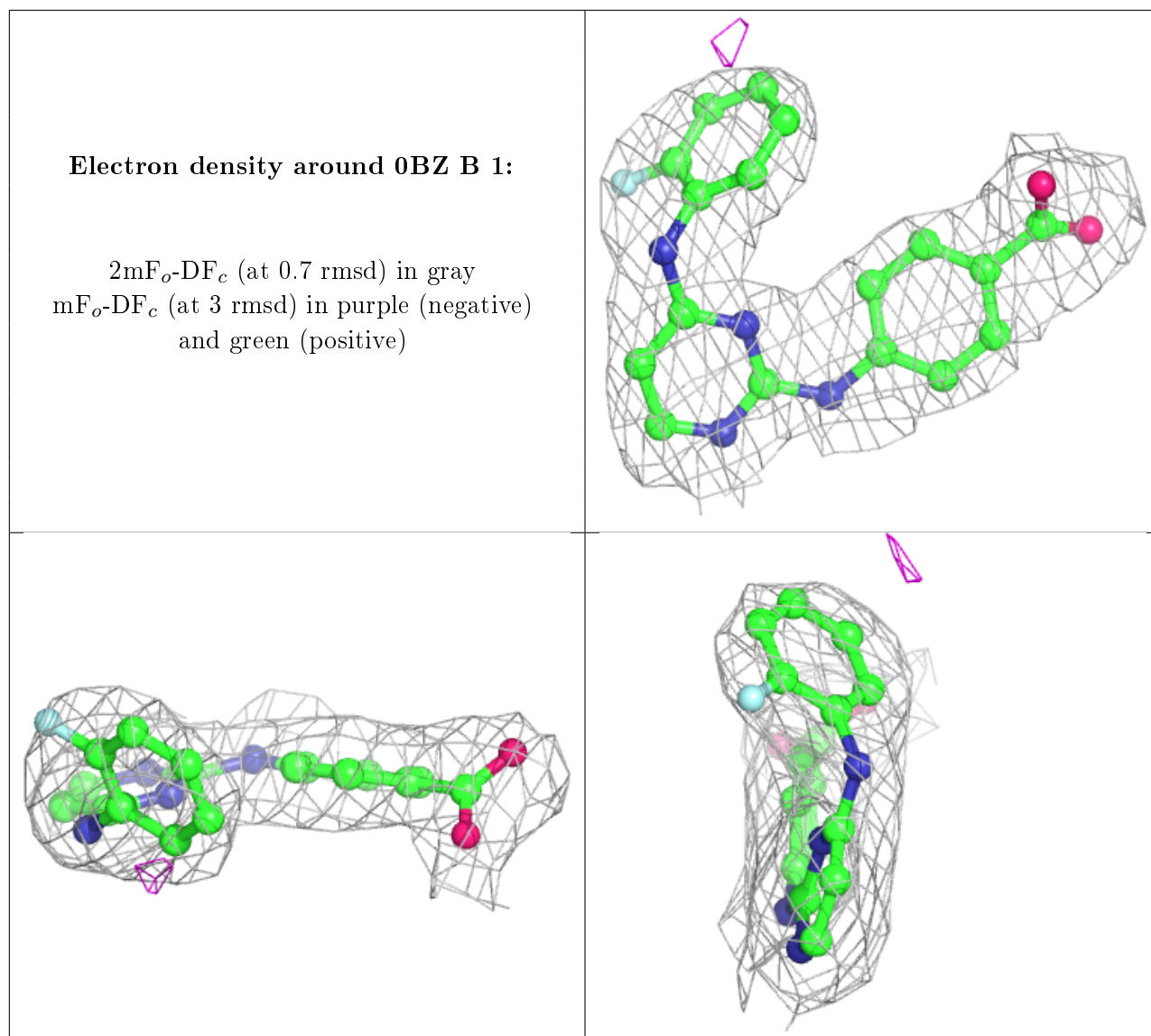
Mol	Type	Chain	Res	Atoms	RSCC	RSR	B-factors(Å ²)	Q<0.9
3	EDO	B	2	4/4	0.89	0.16	42,44,50,61	0
3	EDO	B	4	4/4	0.92	0.13	37,44,52,59	0
3	EDO	A	3	4/4	0.93	0.14	38,47,59,65	0
3	EDO	A	1	4/4	0.96	0.15	36,46,50,66	0
2	0BZ	A	2	24/24	0.97	0.18	23,35,52,55	0
2	0BZ	B	1	24/24	0.97	0.17	21,34,52,54	0

The following is a graphical depiction of the model fit to experimental electron density of all instances of the Ligand of Interest. In addition, ligands with molecular weight > 250 and outliers as shown on the geometry validation Tables will also be included. Each fit is shown from different orientation to approximate a three-dimensional view.

Electron density around 0BZ A 2:

$2mF_o-DF_c$ (at 0.7 rmsd) in gray
 mF_o-DF_c (at 3 rmsd) in purple (negative)
and green (positive)





6.5 Other polymers [\(i\)](#)

There are no such residues in this entry.