



wwPDB EM Validation Summary Report ⓘ

Sep 22, 2024 – 02:05 PM EDT

PDB ID : 8UST
EMDB ID : EMD-3871
Title : In-virion structure of Ebola virus nucleocapsid-like assemblies from recombinant virus-like particles (nucleoprotein, VP24,VP35,VP40)
Authors : Watanabe, R.; Zyla, D.; Saphire, E.O.
Deposited on : 2023-10-29
Resolution : 7.30 Å(reported)

This is a wwPDB EM Validation Summary Report for a publicly released PDB entry.

We welcome your comments at validation@mail.wwpdb.org

A user guide is available at

<https://www.wwpdb.org/validation/2017/EMValidationReportHelp>

with specific help available everywhere you see the ⓘ symbol.

The types of validation reports are described at

<http://www.wwpdb.org/validation/2017/FAQs#types>.

The following versions of software and data (see [references ⓘ](#)) were used in the production of this report:

EMDB validation analysis : 0.0.1.dev112
MolProbity : 4.02b-467
Percentile statistics : 20231227.v01 (using entries in the PDB archive December 27th 2023)
MapQ : 1.9.13
Ideal geometry (proteins) : Engh & Huber (2001)
Ideal geometry (DNA, RNA) : Parkinson et al. (1996)
Validation Pipeline (wwPDB-VP) : 2.38.3

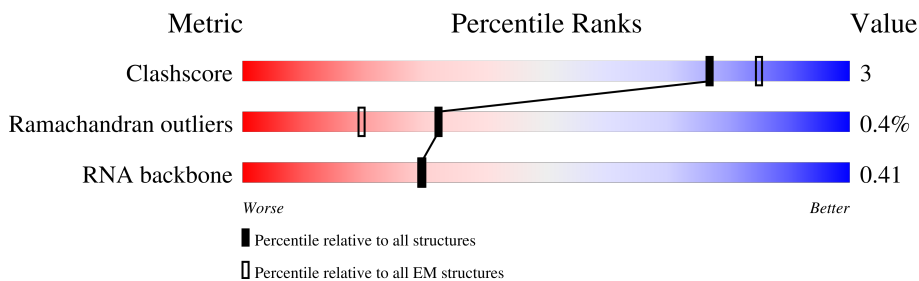
1 Overall quality at a glance i

The following experimental techniques were used to determine the structure:

ELECTRON MICROSCOPY

The reported resolution of this entry is 7.30 Å.

Percentile scores (ranging between 0-100) for global validation metrics of the entry are shown in the following graphic. The table shows the number of entries on which the scores are based.




Metric	Whole archive (#Entries)	EM structures (#Entries)
Clashscore	210492	15764
Ramachandran outliers	207382	16835
RNA backbone	6643	2191

The table below summarises the geometric issues observed across the polymeric chains and their fit to the map. The red, orange, yellow and green segments of the bar indicate the fraction of residues that contain outliers for ≥ 3 , 2, 1 and 0 types of geometric quality criteria respectively. A grey segment represents the fraction of residues that are not modelled. The numeric value for each fraction is indicated below the corresponding segment, with a dot representing fractions $\leq 5\%$. The upper red bar (where present) indicates the fraction of residues that have poor fit to the EM map (all-atom inclusion $< 40\%$). The numeric value is given above the bar.

Mol	Chain	Length	Quality of chain
1	A	739	
1	B	739	
1	E	739	
2	C	6	
2	D	6	
3	I	251	
3	J	251	
4	F	340	

Continued on next page...

Continued from previous page...

Mol	Chain	Length	Quality of chain
4	K	340	 <p>A horizontal bar chart representing the quality of chain. The bar is divided into three segments: a red segment on the left labeled '16%', a green segment in the middle labeled '35%', and a grey segment on the right labeled '65%'. The segments are stacked horizontally, with the red segment starting from the left, followed by the green segment, and then the grey segment.</p>

2 Entry composition

There are 4 unique types of molecules in this entry. The entry contains 6954 atoms, of which 0 are hydrogens and 0 are deuteriums.

In the tables below, the AltConf column contains the number of residues with at least one atom in alternate conformation and the Trace column contains the number of residues modelled with at most 2 atoms.

- Molecule 1 is a protein called Nucleoprotein.

Mol	Chain	Residues	Atoms				AltConf	Trace
			Total	C	N	O		
1	A	387	Total	C	N	O	0	0
			1548	774	387	387		
1	B	387	Total	C	N	O	0	0
			1548	774	387	387		
1	E	318	Total	C	N	O	0	0
			1272	636	318	318		

- Molecule 2 is a RNA chain called RNA (5'-R(*AP*AP*AP*AP*AP*A)-3').

Mol	Chain	Residues	Atoms					AltConf	Trace
			Total	C	N	O	P		
2	C	6	Total	C	N	O	P	0	0
			129	60	30	34	5		
2	D	6	Total	C	N	O	P	0	0
			129	60	30	34	5		

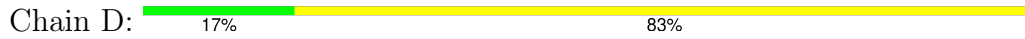
- Molecule 3 is a protein called Membrane-associated protein VP24.

Mol	Chain	Residues	Atoms				AltConf	Trace
			Total	C	N	O		
3	I	217	Total	C	N	O	0	0
			868	434	217	217		
3	J	217	Total	C	N	O	0	0
			868	434	217	217		

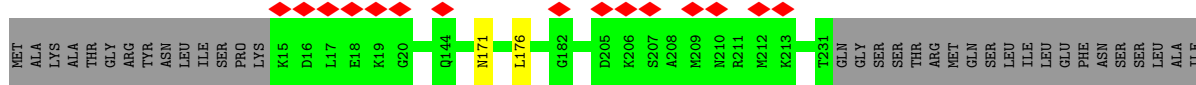
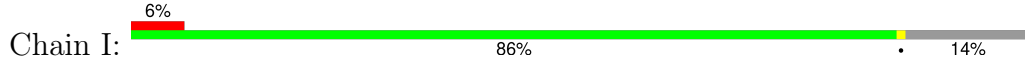
- Molecule 4 is a protein called Polymerase cofactor VP35.

Mol	Chain	Residues	Atoms				AltConf	Trace
			Total	C	N	O		
4	K	120	Total	C	N	O	0	0
			480	240	120	120		
4	F	28	Total	C	N	O	0	0
			112	56	28	28		

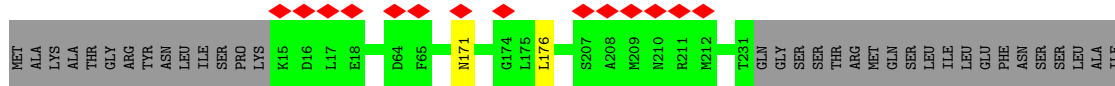
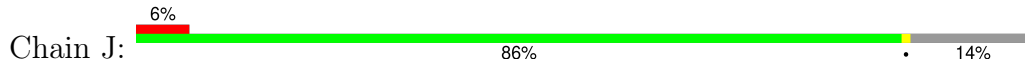
- Molecule 2: RNA (5'-R(*AP*AP*AP*AP*AP*A)-3')



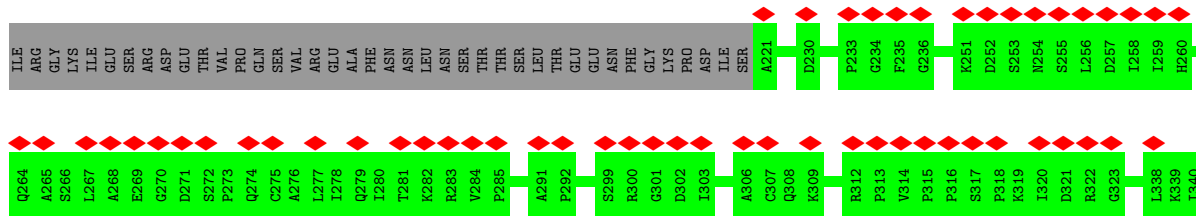
- Molecule 3: Membrane-associated protein VP24



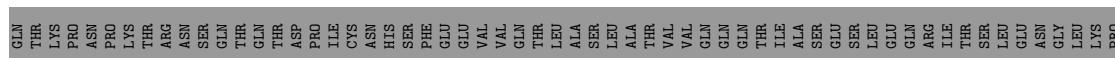
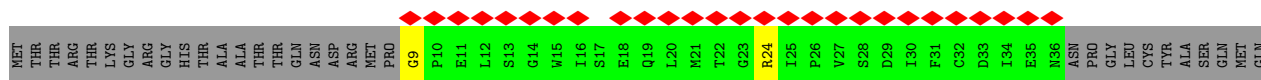
- Molecule 3: Membrane-associated protein VP24



- Molecule 4: Polymerase cofactor VP35



- Molecule 4: Polymerase cofactor VP35



4 Experimental information

Property	Value	Source
EM reconstruction method	SUBTOMOGRAM AVERAGING	Depositor
Imposed symmetry	POINT, C1	Depositor
Number of subtomograms used	35366	Depositor
Resolution determination method	FSC 0.143 CUT-OFF	Depositor
CTF correction method	PHASE FLIPPING AND AMPLITUDE CORRECTION	Depositor
Microscope	FEI TITAN KRIOS	Depositor
Voltage (kV)	300	Depositor
Electron dose ($e^-/\text{\AA}^2$)	100	Depositor
Minimum defocus (nm)	2000	Depositor
Maximum defocus (nm)	4500	Depositor
Magnification	Not provided	
Image detector	GATAN K2 QUANTUM (4k x 4k)	Depositor
Maximum map value	10.570	Depositor
Minimum map value	-5.856	Depositor
Average map value	-0.031	Depositor
Map value standard deviation	0.982	Depositor
Recommended contour level	1.5	Depositor
Map size (\AA)	341.76, 341.76, 341.76	wwPDB
Map dimensions	192, 192, 192	wwPDB
Map angles ($^\circ$)	90.0, 90.0, 90.0	wwPDB
Pixel spacing (\AA)	1.7800001, 1.7800001, 1.7800001	Depositor

5 Model quality

5.1 Standard geometry

The Z score for a bond length (or angle) is the number of standard deviations the observed value is removed from the expected value. A bond length (or angle) with $|Z| > 5$ is considered an outlier worth inspection. RMSZ is the root-mean-square of all Z scores of the bond lengths (or angles).

Mol	Chain	Bond lengths		Bond angles	
		RMSZ	# Z >5	RMSZ	# Z >5
1	A	0.25	0/1547	0.44	0/1932
1	B	0.25	0/1547	0.44	0/1932
1	E	0.24	0/1271	0.47	0/1587
2	C	0.41	0/146	0.72	0/226
2	D	0.41	0/146	0.72	0/226
3	I	0.25	0/867	0.48	0/1082
3	J	0.25	0/867	0.48	0/1082
4	F	0.23	0/111	0.50	0/137
4	K	0.26	0/479	0.49	0/597
All	All	0.26	0/6981	0.48	0/8801

Chiral center outliers are detected by calculating the chiral volume of a chiral center and verifying if the center is modelled as a planar moiety or with the opposite hand. A planarity outlier is detected by checking planarity of atoms in a peptide group, atoms in a mainchain group or atoms of a sidechain that are expected to be planar.

Mol	Chain	#Chirality outliers	#Planarity outliers
1	E	0	2
4	F	0	1
All	All	0	3

There are no bond length outliers.

There are no bond angle outliers.

There are no chirality outliers.

All (3) planarity outliers are listed below:

Mol	Chain	Res	Type	Group
1	E	152	PRO	Peptide
1	E	153	GLU	Peptide
4	F	24	ARG	Peptide

5.2 Too-close contacts [i](#)

In the following table, the Non-H and H(model) columns list the number of non-hydrogen atoms and hydrogen atoms in the chain respectively. The H(added) column lists the number of hydrogen atoms added and optimized by MolProbity. The Clashes column lists the number of clashes within the asymmetric unit, whereas Symm-Clashes lists symmetry-related clashes.

Mol	Chain	Non-H	H(model)	H(added)	Clashes	Symm-Clashes
1	A	1548	0	428	5	0
1	B	1548	0	428	7	0
1	E	1272	0	353	3	0
2	C	129	0	68	6	0
2	D	129	0	68	4	0
3	I	868	0	230	1	0
3	J	868	0	230	1	0
4	F	112	0	31	2	0
4	K	480	0	125	0	0
All	All	6954	0	1961	25	0

The all-atom clashscore is defined as the number of clashes found per 1000 atoms (including hydrogen atoms). The all-atom clashscore for this structure is 3.

The worst 5 of 25 close contacts within the same asymmetric unit are listed below, sorted by their clash magnitude.

Atom-1	Atom-2	Interatomic distance (Å)	Clash overlap (Å)
1:B:26:THR:O	1:B:30:SER:N	2.26	0.65
3:I:171:ASN:H	3:I:176:LEU:H	1.47	0.62
1:A:26:THR:O	1:A:30:SER:N	2.26	0.62
3:J:171:ASN:H	3:J:176:LEU:H	1.47	0.61
2:C:1003:A:H2'	2:C:1004:A:C8	2.36	0.61

There are no symmetry-related clashes.

5.3 Torsion angles [i](#)

5.3.1 Protein backbone [i](#)

In the following table, the Percentiles column shows the percent Ramachandran outliers of the chain as a percentile score with respect to all PDB entries followed by that with respect to all EM entries.

The Analysed column shows the number of residues for which the backbone conformation was analysed, and the total number of residues.

Mol	Chain	Analysed	Favoured	Allowed	Outliers	Percentiles	
1	A	385/739 (52%)	356 (92%)	26 (7%)	3 (1%)	16	55
1	B	385/739 (52%)	356 (92%)	26 (7%)	3 (1%)	16	55
1	E	316/739 (43%)	289 (92%)	26 (8%)	1 (0%)	37	73
3	I	215/251 (86%)	201 (94%)	14 (6%)	0	100	100
3	J	215/251 (86%)	201 (94%)	14 (6%)	0	100	100
4	F	26/340 (8%)	21 (81%)	5 (19%)	0	100	100
4	K	118/340 (35%)	113 (96%)	5 (4%)	0	100	100
All	All	1660/3399 (49%)	1537 (93%)	116 (7%)	7 (0%)	32	68

5 of 7 Ramachandran outliers are listed below:

Mol	Chain	Res	Type
1	A	138	PRO
1	B	138	PRO
1	A	129	ASN
1	B	129	ASN
1	A	130	ILE

5.3.2 Protein sidechains [i](#)

There are no protein residues with a non-rotameric sidechain to report in this entry.

5.3.3 RNA [i](#)

Mol	Chain	Analysed	Backbone Outliers	Pucker Outliers
2	C	5/6 (83%)	0	0
2	D	5/6 (83%)	0	0
All	All	10/12 (83%)	0	0

There are no RNA backbone outliers to report.

There are no RNA pucker outliers to report.

5.4 Non-standard residues in protein, DNA, RNA chains [i](#)

There are no non-standard protein/DNA/RNA residues in this entry.

5.5 Carbohydrates [i](#)

There are no oligosaccharides in this entry.

5.6 Ligand geometry [i](#)

There are no ligands in this entry.

5.7 Other polymers [i](#)

There are no such residues in this entry.

5.8 Polymer linkage issues [i](#)

There are no chain breaks in this entry.

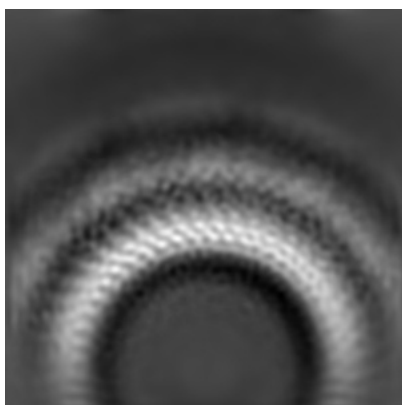
6 Map visualisation [i](#)

This section contains visualisations of the EMDB entry EMD-3871. These allow visual inspection of the internal detail of the map and identification of artifacts.

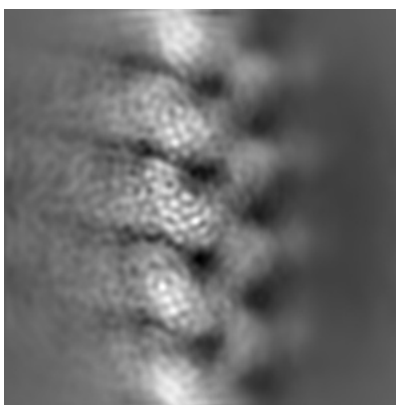
No raw map or half-maps were deposited for this entry and therefore no images, graphs, etc. pertaining to the raw map can be shown.

6.1 Orthogonal projections [i](#)

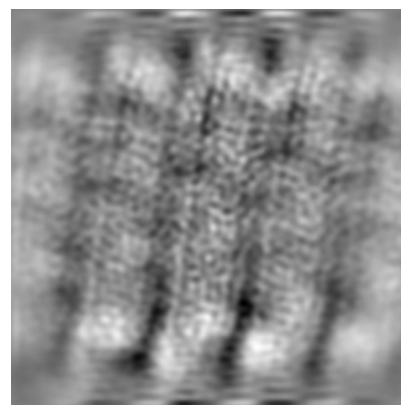
6.1.1 Primary map



X



Y

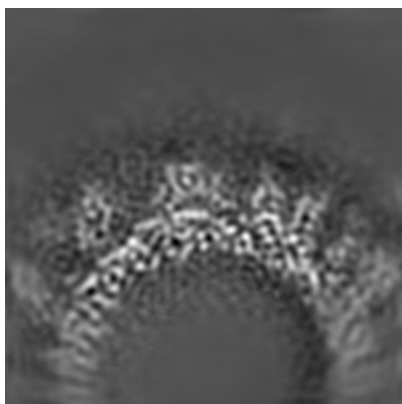


Z

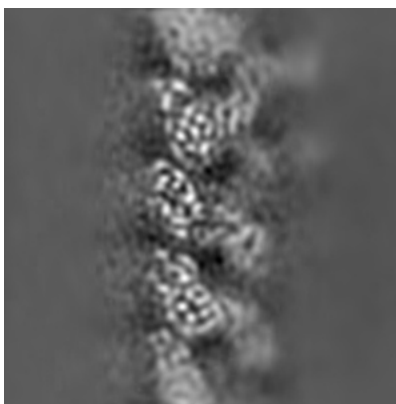
The images above show the map projected in three orthogonal directions.

6.2 Central slices [i](#)

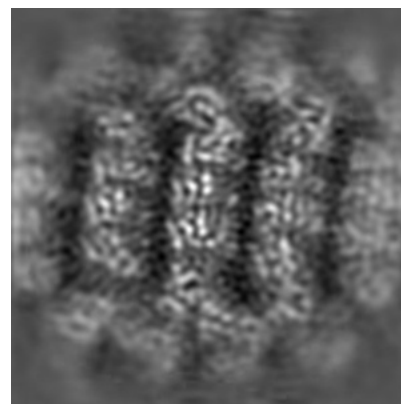
6.2.1 Primary map



X Index: 96



Y Index: 96

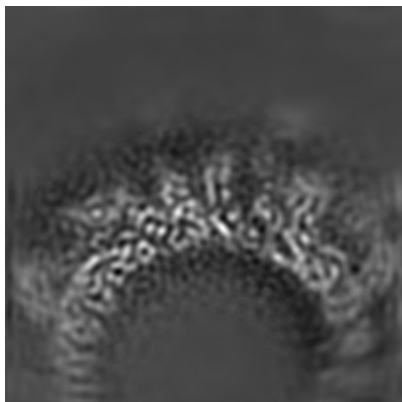


Z Index: 96

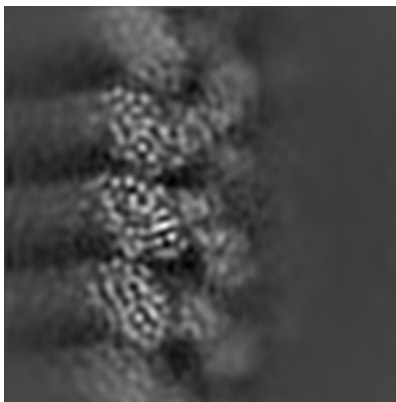
The images above show central slices of the map in three orthogonal directions.

6.3 Largest variance slices [\(i\)](#)

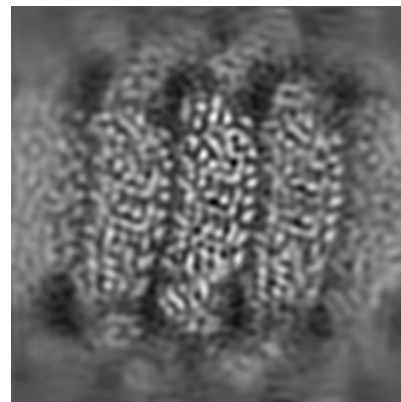
6.3.1 Primary map



X Index: 90



Y Index: 48

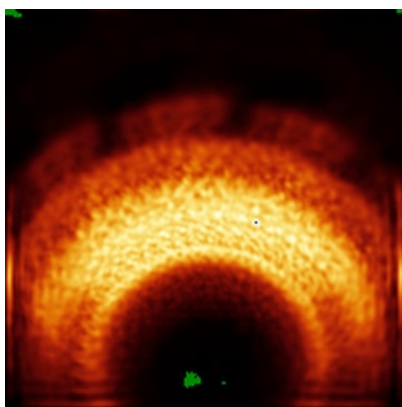


Z Index: 81

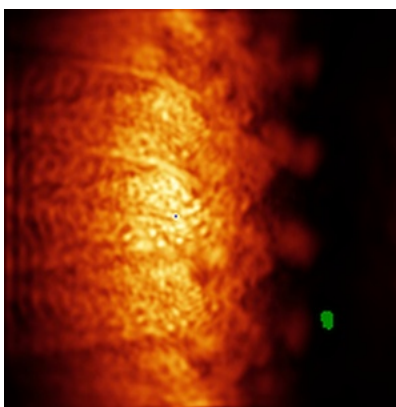
The images above show the largest variance slices of the map in three orthogonal directions.

6.4 Orthogonal standard-deviation projections (False-color) [\(i\)](#)

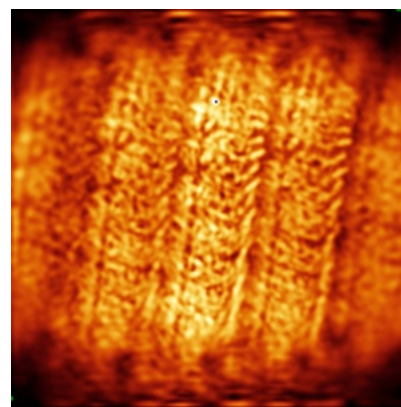
6.4.1 Primary map



X



Y



Z

The images above show the map standard deviation projections with false color in three orthogonal directions. Minimum values are shown in green, max in blue, and dark to light orange shades represent small to large values respectively.

6.5 Orthogonal surface views [i](#)

6.5.1 Primary map



The images above show the 3D surface view of the map at the recommended contour level 1.5. These images, in conjunction with the slice images, may facilitate assessment of whether an appropriate contour level has been provided.

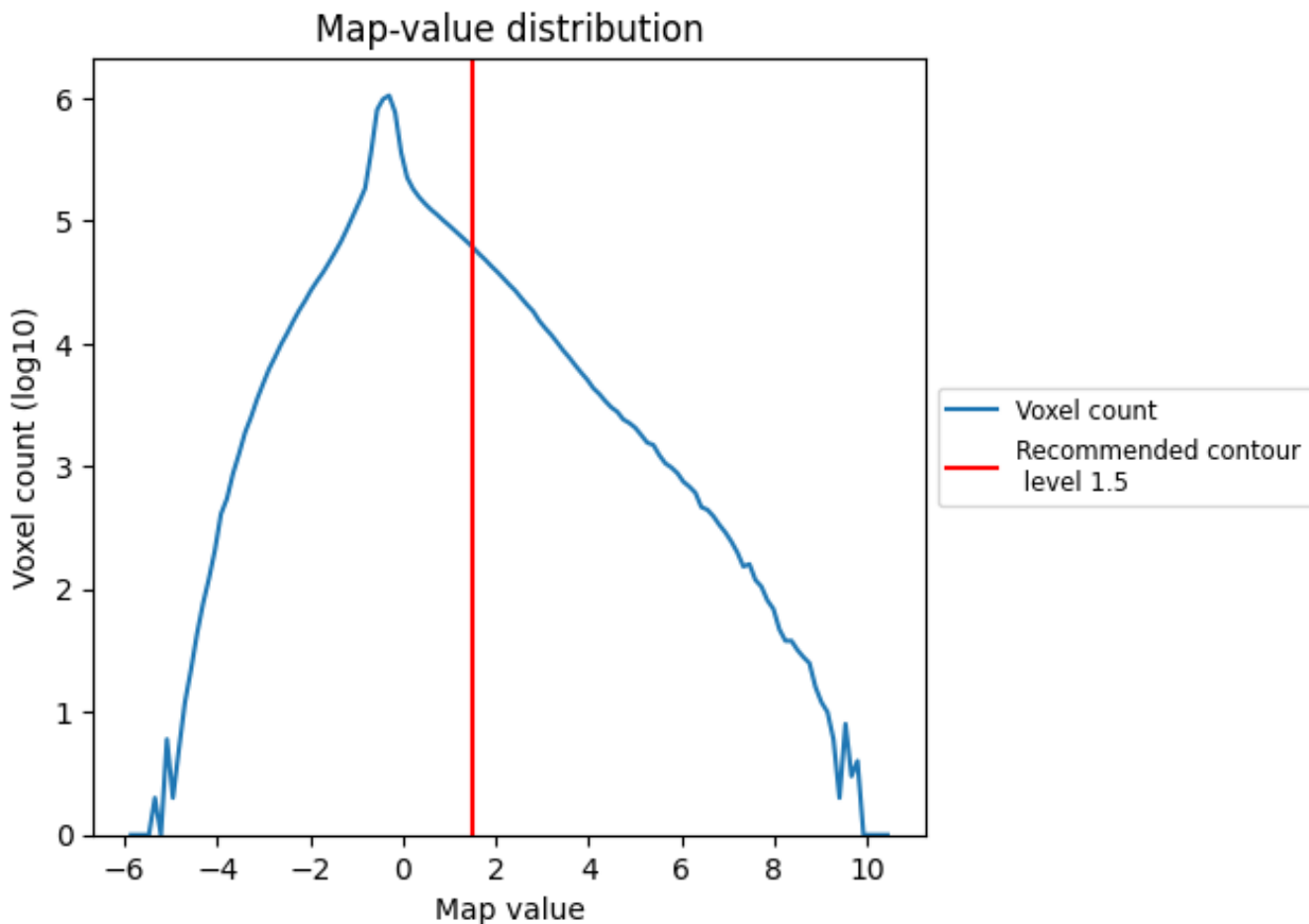
6.6 Mask visualisation [i](#)

This section was not generated. No masks/segmentation were deposited.

7 Map analysis [i](#)

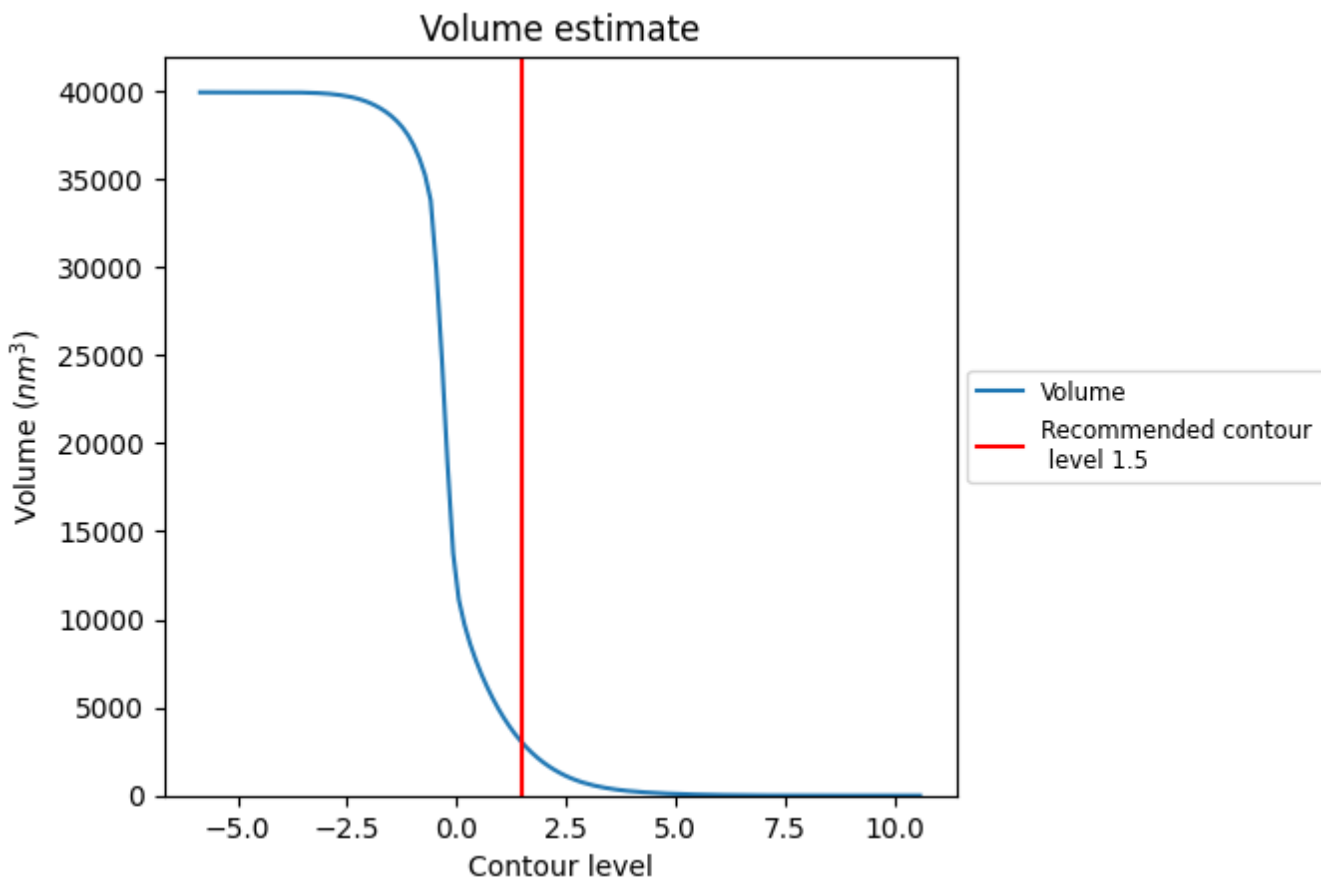
This section contains the results of statistical analysis of the map.

7.1 Map-value distribution [i](#)



The map-value distribution is plotted in 128 intervals along the x-axis. The y-axis is logarithmic. A spike in this graph at zero usually indicates that the volume has been masked.

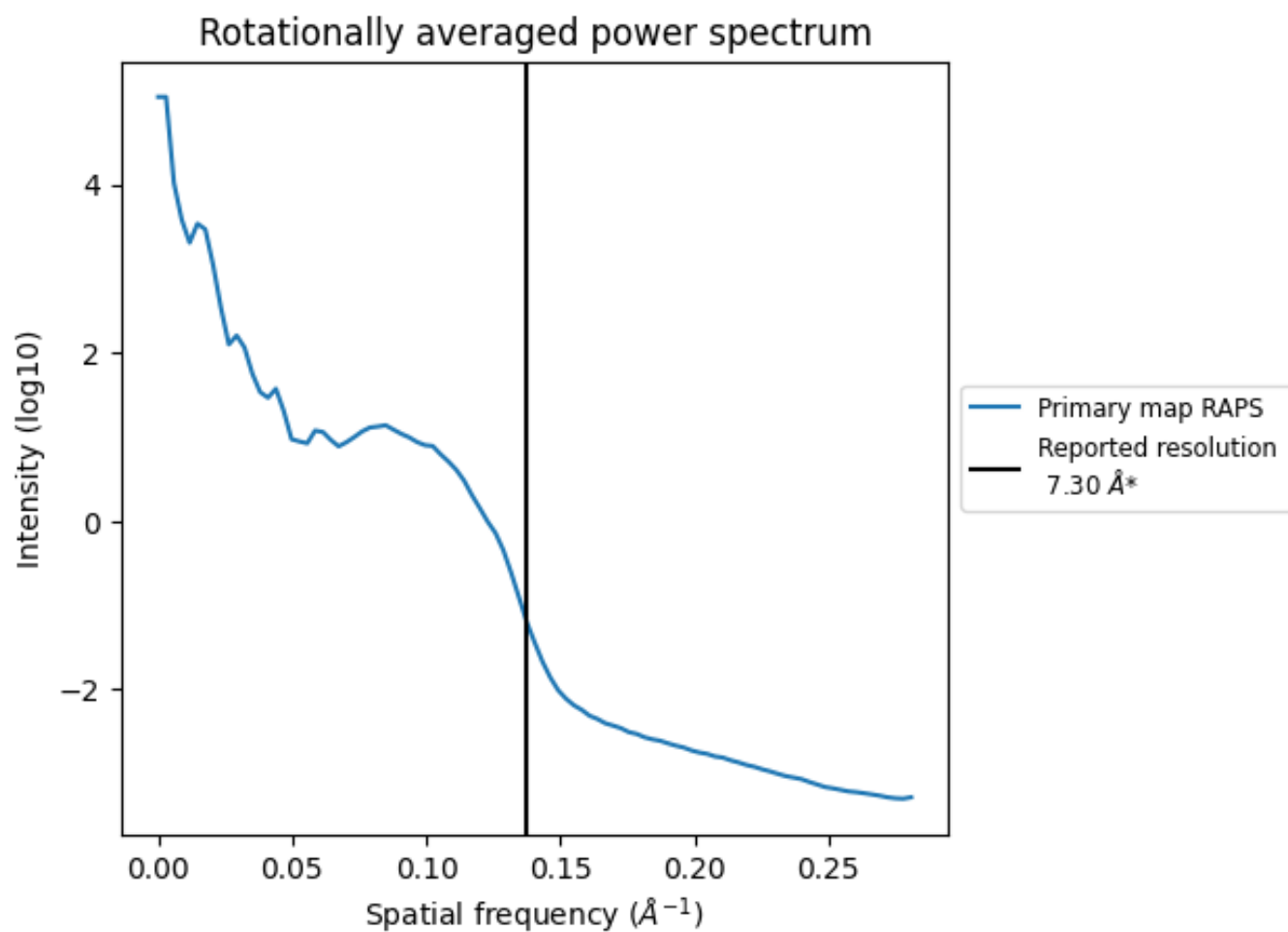
7.2 Volume estimate [i](#)



The volume at the recommended contour level is 2987 nm³; this corresponds to an approximate mass of 2698 kDa.

The volume estimate graph shows how the enclosed volume varies with the contour level. The recommended contour level is shown as a vertical line and the intersection between the line and the curve gives the volume of the enclosed surface at the given level.

7.3 Rotationally averaged power spectrum [i](#)



*Reported resolution corresponds to spatial frequency of 0.137 Å⁻¹

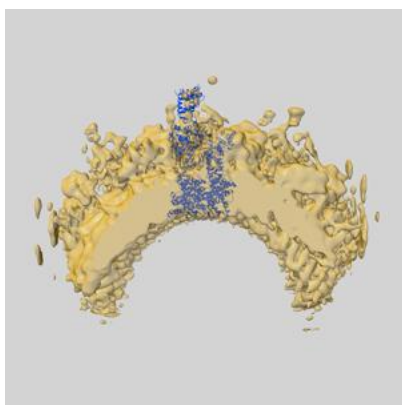
8 Fourier-Shell correlation

This section was not generated. No FSC curve or half-maps provided.

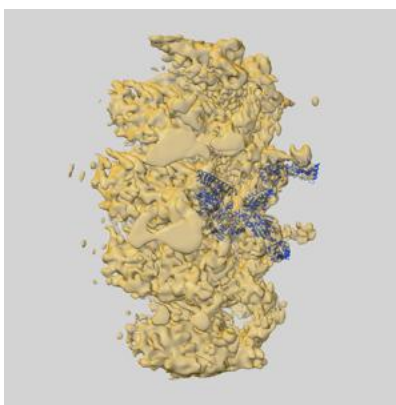
9 Map-model fit [i](#)

This section contains information regarding the fit between EMDB map EMD-3871 and PDB model 8UST. Per-residue inclusion information can be found in section 3 on page 5.

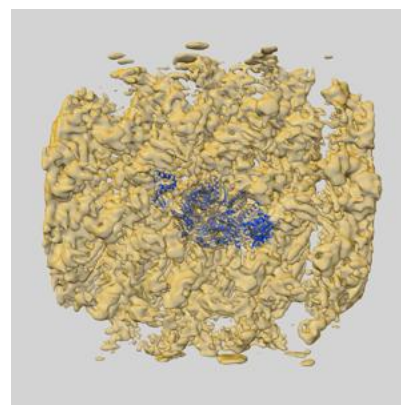
9.1 Map-model overlay [i](#)



X



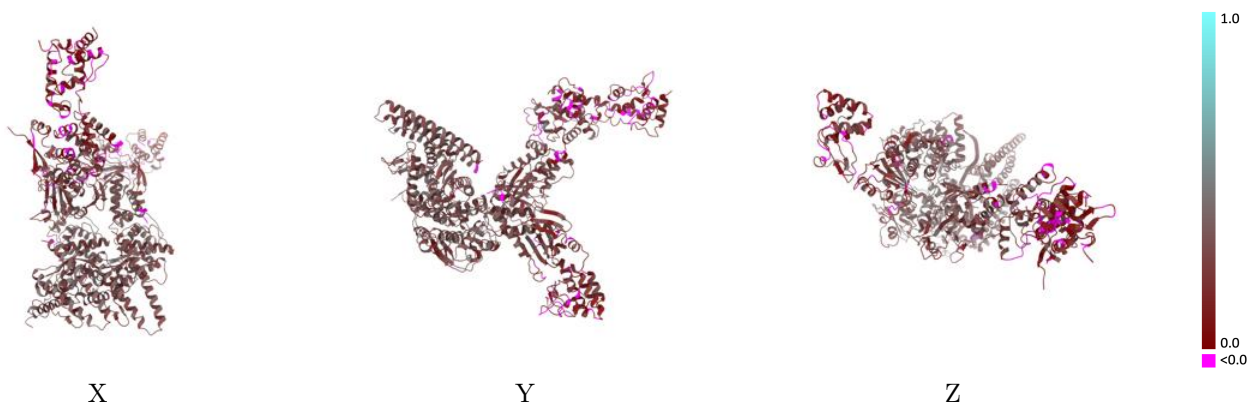
Y



Z

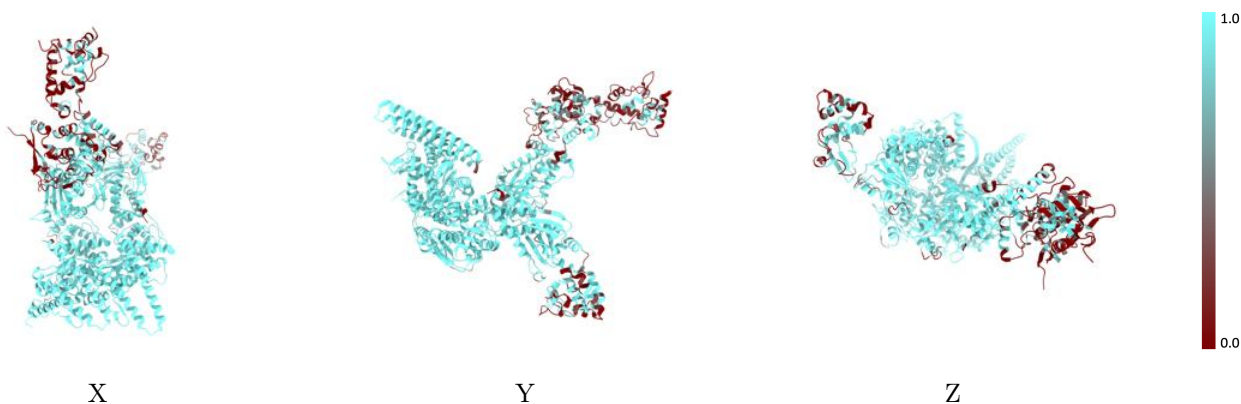
The images above show the 3D surface view of the map at the recommended contour level 1.5 at 50% transparency in yellow overlaid with a ribbon representation of the model coloured in blue. These images allow for the visual assessment of the quality of fit between the atomic model and the map.

9.2 Q-score mapped to coordinate model [\(i\)](#)



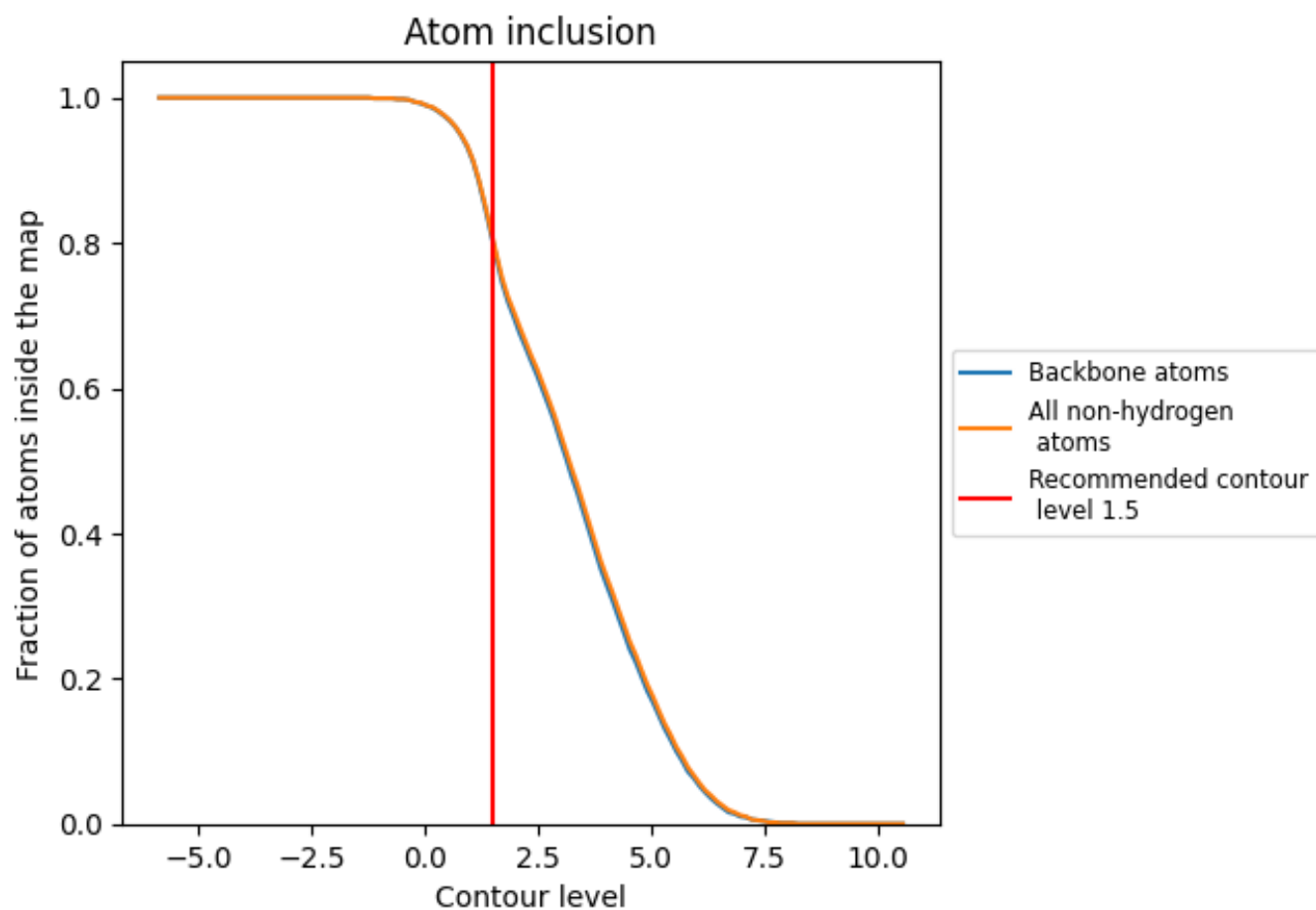
The images above show the model with each residue coloured according to its Q-score. This shows their resolvability in the map with higher Q-score values reflecting better resolvability. Please note: Q-score is calculating the resolvability of atoms, and thus high values are only expected at resolutions at which atoms can be resolved. Low Q-score values may therefore be expected for many entries.

9.3 Atom inclusion mapped to coordinate model [\(i\)](#)



The images above show the model with each residue coloured according to its atom inclusion. This shows to what extent they are inside the map at the recommended contour level (1.5).





















9.4 Atom inclusion [i](#)



At the recommended contour level, 80% of all backbone atoms, 81% of all non-hydrogen atoms, are inside the map.

9.5 Map-model fit summary

The table lists the average atom inclusion at the recommended contour level (1.5) and Q-score for the entire model and for each chain.

Chain	Atom inclusion	Q-score
All	 0.8090	 0.2470
A	 0.9900	 0.3100
B	 0.9800	 0.3130
C	 0.9920	 0.2790
D	 1.0000	 0.2980
E	 0.3870	 0.1360
F	 0.0450	 0.0670
I	 0.9180	 0.2590
J	 0.9100	 0.2370
K	 0.4980	 0.1390

