



Full wwPDB X-ray Structure Validation Report ⓘ

Mar 13, 2018 – 05:12 pm GMT

PDB ID : 4UUA
Title : Crystal structure of zebrafish Sirtuin 5 in complex with 3S-Z-amino- succiny-
lated CPS1-peptide
Authors : Pannek, M.; Gertz, M.; Steegborn, C.
Deposited on : 2014-07-25
Resolution : 2.80 Å(reported)

This is a Full wwPDB X-ray Structure Validation Report for a publicly released PDB entry.

We welcome your comments at validation@mail.wwpdb.org

A user guide is available at

<https://www.wwpdb.org/validation/2017/XrayValidationReportHelp>

with specific help available everywhere you see the ⓘ symbol.

The following versions of software and data (see [references ⓘ](#)) were used in the production of this report:

MolProbity : 4.02b-467
Mogul : 1.7.3 (157068), CSD as539be (2018)
Xtrriage (Phenix) : 1.13
EDS : trunk31020
Percentile statistics : 20171227.v01 (using entries in the PDB archive December 27th 2017)
Refmac : 5.8.0158
CCP4 : 7.0 (Gargrove)
Ideal geometry (proteins) : Engh & Huber (2001)
Ideal geometry (DNA, RNA) : Parkinson et al. (1996)
Validation Pipeline (wwPDB-VP) : trunk31020

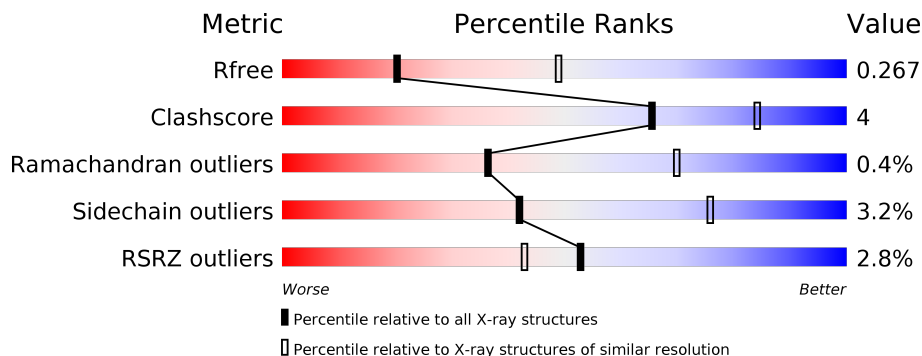
1 Overall quality at a glance

The following experimental techniques were used to determine the structure:

X-RAY DIFFRACTION

The reported resolution of this entry is 2.80 Å.

Percentile scores (ranging between 0-100) for global validation metrics of the entry are shown in the following graphic. The table shows the number of entries on which the scores are based.



Metric	Whole archive (#Entries)	Similar resolution (#Entries, resolution range(Å))
R_{free}	111664	2792 (2.80-2.80)
Clashscore	122126	3209 (2.80-2.80)
Ramachandran outliers	120053	3158 (2.80-2.80)
Sidechain outliers	120020	3160 (2.80-2.80)
RSRZ outliers	108989	2726 (2.80-2.80)

The table below summarises the geometric issues observed across the polymeric chains and their fit to the electron density. The red, orange, yellow and green segments on the lower bar indicate the fraction of residues that contain outliers for ≥ 3 , 2, 1 and 0 types of geometric quality criteria. A grey segment represents the fraction of residues that are not modelled. The numeric value for each fraction is indicated below the corresponding segment, with a dot representing fractions $\leq 5\%$. The upper red bar (where present) indicates the fraction of residues that have poor fit to the electron density. The numeric value is given above the bar.

Mol	Chain	Length	Quality of chain
1	A	275	
1	B	275	
2	D	9	

2 Entry composition

There are 9 unique types of molecules in this entry. The entry contains 4275 atoms, of which 0 are hydrogens and 0 are deuteriums.

In the tables below, the ZeroOcc column contains the number of atoms modelled with zero occupancy, the AltConf column contains the number of residues with at least one atom in alternate conformation and the Trace column contains the number of residues modelled with at most 2 atoms.

- Molecule 1 is a protein called NAD-DEPENDENT PROTEIN DEACYLASE SIRTUIN-5, MITOCHONDRIAL.

Mol	Chain	Residues	Atoms					ZeroOcc	AltConf	Trace
			Total	C	N	O	S			
1	A	262	Total 2038	C 1286	N 367	O 370	S 15	0	1	0
1	B	266	Total 2065	C 1302	N 372	O 376	S 15	0	0	0

There are 12 discrepancies between the modelled and reference sequences:

Chain	Residue	Modelled	Actual	Comment	Reference
A	24	GLY	-	expression tag	UNP Q6DHI5
A	25	ILE	-	expression tag	UNP Q6DHI5
A	26	ASP	-	expression tag	UNP Q6DHI5
A	27	PRO	-	expression tag	UNP Q6DHI5
A	28	PHE	-	expression tag	UNP Q6DHI5
A	29	THR	-	expression tag	UNP Q6DHI5
B	24	GLY	-	expression tag	UNP Q6DHI5
B	25	ILE	-	expression tag	UNP Q6DHI5
B	26	ASP	-	expression tag	UNP Q6DHI5
B	27	PRO	-	expression tag	UNP Q6DHI5
B	28	PHE	-	expression tag	UNP Q6DHI5
B	29	THR	-	expression tag	UNP Q6DHI5

- Molecule 2 is a protein called CARBAMOYLPHOSPHATE SYNTHETASE I.

Mol	Chain	Residues	Atoms				ZeroOcc	AltConf	Trace
			Total	C	N	O			
2	D	9	Total 68	C 47	N 9	O 12	0	0	0

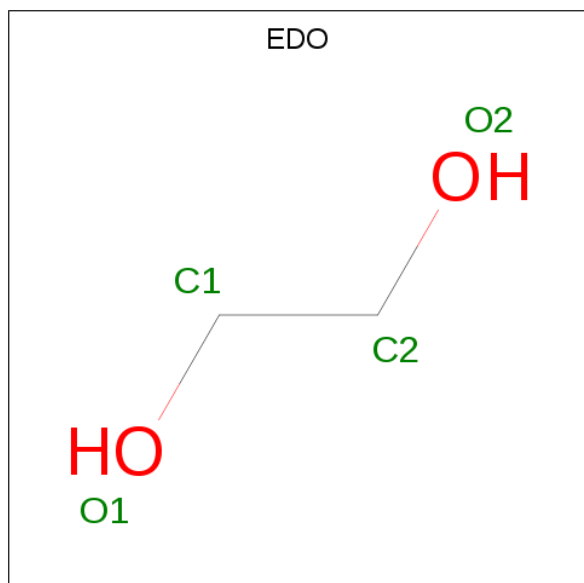
There is a discrepancy between the modelled and reference sequences:

Chain	Residue	Modelled	Actual	Comment	Reference
D	0	BEZ	-	BENZOYLATION	UNP Q5R209

- Molecule 3 is ZINC ION (three-letter code: ZN) (formula: Zn).

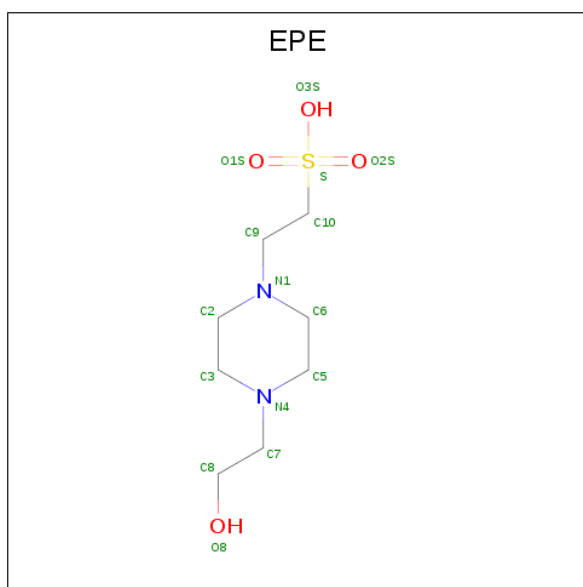
Mol	Chain	Residues	Atoms		ZeroOcc	AltConf
3	B	1	Total	Zn	0	0
			1	1		
3	A	1	Total	Zn	0	0
			1	1		

- Molecule 4 is 1,2-ETHANEDIOL (three-letter code: EDO) (formula: C₂H₆O₂).



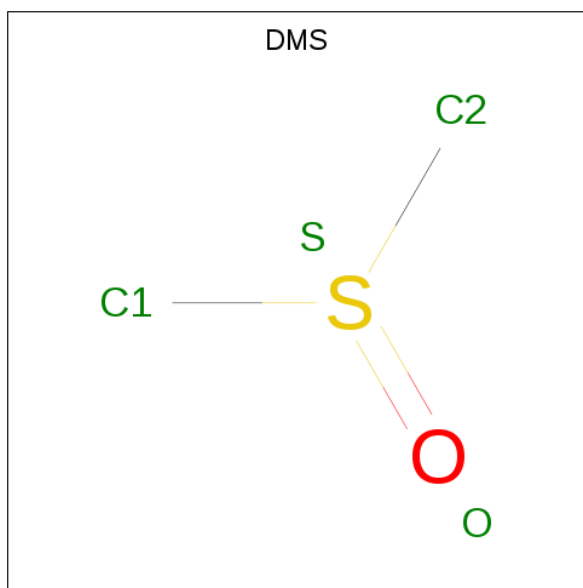
Mol	Chain	Residues	Atoms			ZeroOcc	AltConf
4	A	1	Total	C	O	0	0
			4	2	2		
4	B	1	Total	C	O	0	0
			4	2	2		
4	B	1	Total	C	O	0	0
			4	2	2		

- Molecule 5 is 4-(2-HYDROXYETHYL)-1-PIPERAZINE ETHANESULFONIC ACID (three-letter code: EPE) (formula: C₈H₁₈N₂O₄S).



Mol	Chain	Residues	Atoms					ZeroOcc	AltConf
			Total	C	N	O	S		
5	B	1	15	8	2	4	1	0	0

- Molecule 6 is DIMETHYL SULFOXIDE (three-letter code: DMS) (formula: C₂H₆OS).

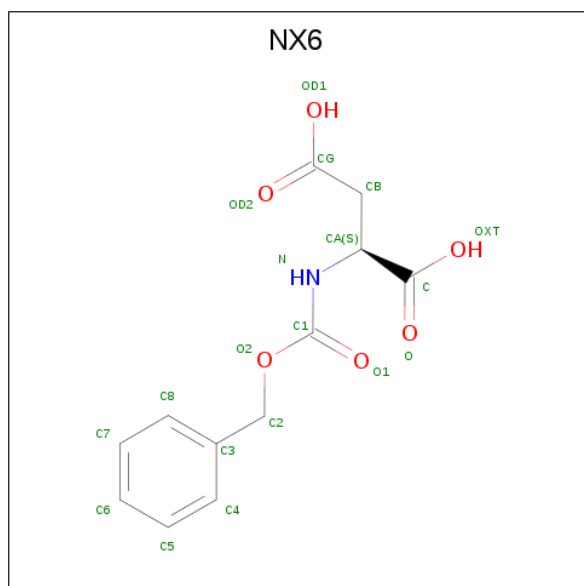


Mol	Chain	Residues	Atoms				ZeroOcc	AltConf
			Total	C	O	S		
6	B	1	4	2	1	1	0	0

- Molecule 7 is SODIUM ION (three-letter code: NA) (formula: Na).

Mol	Chain	Residues	Atoms	ZeroOcc	AltConf
7	B	1	Total Na 1 1	0	0

- Molecule 8 is N-[(benzyloxy)carbonyl]-L-aspartic acid (three-letter code: NX6) (formula: C₁₂H₁₃NO₆).



Mol	Chain	Residues	Atoms	ZeroOcc	AltConf
8	D	1	Total C N O 18 12 1 5	0	0

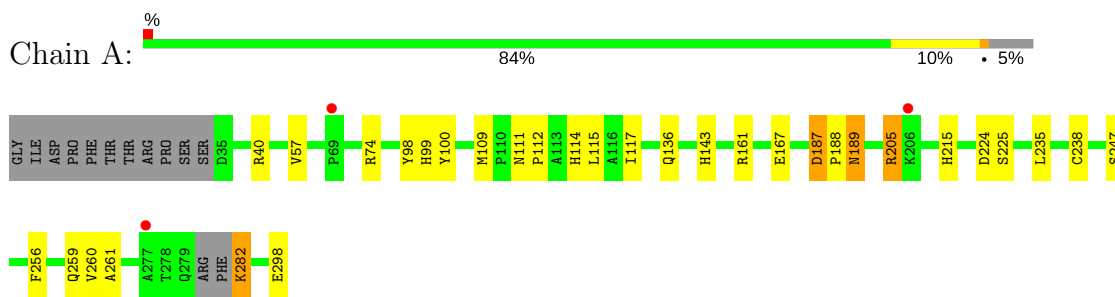
- Molecule 9 is water.

Mol	Chain	Residues	Atoms	ZeroOcc	AltConf
9	A	34	Total O 34 34	0	0
9	B	18	Total O 18 18	0	0

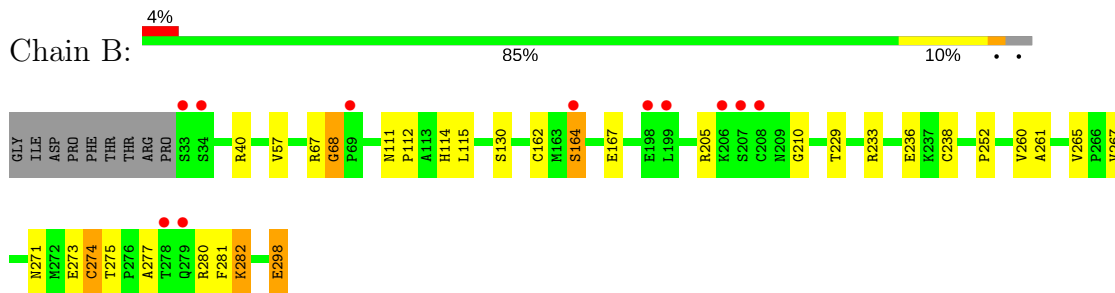
3 Residue-property plots [i](#)

These plots are drawn for all protein, RNA and DNA chains in the entry. The first graphic for a chain summarises the proportions of the various outlier classes displayed in the second graphic. The second graphic shows the sequence view annotated by issues in geometry and electron density. Residues are color-coded according to the number of geometric quality criteria for which they contain at least one outlier: green = 0, yellow = 1, orange = 2 and red = 3 or more. A red dot above a residue indicates a poor fit to the electron density ($RSRZ > 2$). Stretches of 2 or more consecutive residues without any outlier are shown as a green connector. Residues present in the sample, but not in the model, are shown in grey.

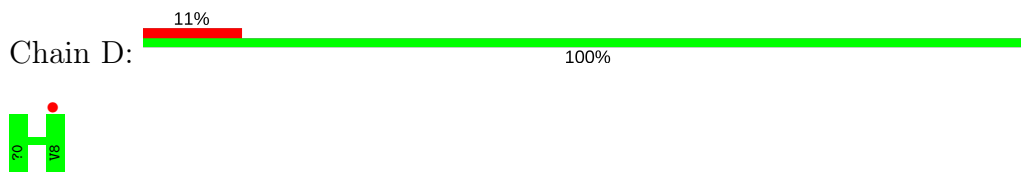
- Molecule 1: NAD-DEPENDENT PROTEIN DEACYLASE SIRTUIN-5, MITOCHONDRIAL



- Molecule 1: NAD-DEPENDENT PROTEIN DEACYLASE SIRTUIN-5, MITOCHONDRIAL



- Molecule 2: CARBAMOYLPHOSPHATE SYNTHETASE I



4 Data and refinement statistics

Property	Value	Source
Space group	P 65 2 2	Depositor
Cell constants a, b, c, α , β , γ	87.19Å 87.19Å 313.87Å 90.00° 90.00° 120.00°	Depositor
Resolution (Å)	19.87 – 2.80 19.87 – 2.80	Depositor EDS
% Data completeness (in resolution range)	99.5 (19.87-2.80) 100.0 (19.87-2.80)	Depositor EDS
R_{merge}	0.25	Depositor
R_{sym}	(Not available)	Depositor
$\langle I/\sigma(I) \rangle$ ¹	1.76 (at 2.79Å)	Xtrriage
Refinement program	REFMAC 5.8.0049	Depositor
R, R_{free}	0.208 , 0.261 0.211 , 0.267	Depositor DCC
R_{free} test set	915 reflections (5.00%)	wwPDB-VP
Wilson B-factor (Å ²)	58.1	Xtrriage
Anisotropy	0.187	Xtrriage
Bulk solvent k_{sol} (e/Å ³), B_{sol} (Å ²)	0.32 , 50.5	EDS
L-test for twinning ²	$\langle L \rangle = 0.47$, $\langle L^2 \rangle = 0.30$	Xtrriage
Estimated twinning fraction	No twinning to report.	Xtrriage
F_o, F_c correlation	0.94	EDS
Total number of atoms	4275	wwPDB-VP
Average B, all atoms (Å ²)	70.0	wwPDB-VP

Xtrriage's analysis on translational NCS is as follows: *The largest off-origin peak in the Patterson function is 4.85% of the height of the origin peak. No significant pseudotranslation is detected.*

¹Intensities estimated from amplitudes.

²Theoretical values of $\langle |L| \rangle$, $\langle L^2 \rangle$ for acentric reflections are 0.5, 0.333 respectively for untwinned datasets, and 0.375, 0.2 for perfectly twinned datasets.

5 Model quality [i](#)

5.1 Standard geometry [i](#)

Bond lengths and bond angles in the following residue types are not validated in this section: ZN, NX6, NA, EDO, BEZ, DMS, EPE

The Z score for a bond length (or angle) is the number of standard deviations the observed value is removed from the expected value. A bond length (or angle) with $|Z| > 5$ is considered an outlier worth inspection. RMSZ is the root-mean-square of all Z scores of the bond lengths (or angles).

Mol	Chain	Bond lengths		Bond angles	
		RMSZ	# Z >5	RMSZ	# Z >5
1	A	0.66	0/2095	0.80	1/2840 (0.0%)
1	B	0.62	0/2120	0.79	0/2874
2	D	0.66	0/60	1.12	0/79
All	All	0.64	0/4275	0.80	1/5793 (0.0%)

There are no bond length outliers.

All (1) bond angle outliers are listed below:

Mol	Chain	Res	Type	Atoms	Z	Observed(°)	Ideal(°)
1	A	205	ARG	NE-CZ-NH1	6.68	123.64	120.30

There are no chirality outliers.

There are no planarity outliers.

5.2 Too-close contacts [i](#)

In the following table, the Non-H and H(model) columns list the number of non-hydrogen atoms and hydrogen atoms in the chain respectively. The H(added) column lists the number of hydrogen atoms added and optimized by MolProbity. The Clashes column lists the number of clashes within the asymmetric unit, whereas Symm-Clashes lists symmetry related clashes.

Mol	Chain	Non-H	H(model)	H(added)	Clashes	Symm-Clashes
1	A	2038	0	2002	21	0
1	B	2065	0	2028	18	0
2	D	68	0	66	0	0
3	A	1	0	0	0	0
3	B	1	0	0	0	0
4	A	4	0	6	0	0
4	B	8	0	12	0	0

Continued on next page...

Continued from previous page...

Mol	Chain	Non-H	H(model)	H(added)	Clashes	Symm-Clashes
5	B	15	0	18	0	0
6	B	4	0	6	0	0
7	B	1	0	0	0	0
8	D	18	0	11	1	0
9	A	34	0	0	3	0
9	B	18	0	0	0	0
All	All	4275	0	4149	37	0

The all-atom clashscore is defined as the number of clashes found per 1000 atoms (including hydrogen atoms). The all-atom clashscore for this structure is 4.

All (37) close contacts within the same asymmetric unit are listed below, sorted by their clash magnitude.

Atom-1	Atom-2	Interatomic distance (Å)	Clash overlap (Å)
1:A:256:PHE:O	1:A:259:GLN:N	2.21	0.72
1:A:40:ARG:NH2	1:A:298:GLU:O	2.24	0.71
1:B:40:ARG:NH2	1:B:298:GLU:O	2.24	0.69
1:B:111:ASN:H	1:B:114:HIS:HD2	1.38	0.68
1:B:167:GLU:OE1	1:B:205:ARG:HD2	1.93	0.68
1:A:143[B]:HIS:CE1	9:A:2019:HOH:O	2.49	0.65
1:A:167:GLU:OE1	1:A:205:ARG:HD2	2.02	0.60
1:A:189:ASN:HD22	1:A:189:ASN:N	1.99	0.59
1:B:67:ARG:O	1:B:68:GLY:O	2.19	0.59
1:A:282:LYS:HD3	1:A:282:LYS:N	2.19	0.58
1:B:233:ARG:O	1:B:236:GLU:HG2	2.09	0.52
1:B:57:VAL:HG12	1:B:114:HIS:CE1	2.44	0.51
1:A:235:LEU:HD13	1:A:256:PHE:HB3	1.91	0.51
1:B:281:PHE:O	1:B:282:LYS:C	2.49	0.51
1:A:282:LYS:CD	1:A:282:LYS:N	2.76	0.49
1:A:111:ASN:HB2	1:A:112:PRO:CD	2.43	0.48
1:A:111:ASN:HB2	1:A:112:PRO:HD2	1.97	0.47
1:B:164:SER:HB2	1:B:210:GLY:HA3	1.96	0.47
1:A:260:VAL:HG23	1:A:261:ALA:N	2.30	0.47
1:A:98:TYR:OH	8:D:1300:NX6:O	2.23	0.47
1:A:187:ASP:HB2	9:A:2028:HOH:O	2.13	0.47
1:A:224:ASP:OD1	1:A:224:ASP:C	2.53	0.47
1:B:260:VAL:HG12	1:B:265:VAL:HB	1.97	0.46
1:A:161:ARG:HD3	1:A:215:HIS:ND1	2.31	0.46
1:B:111:ASN:HB2	1:B:112:PRO:CD	2.46	0.46
1:B:277:ALA:HA	1:B:280:ARG:HH11	1.82	0.44
1:B:274:CYS:O	1:B:275:THR:C	2.56	0.43

Continued on next page...

Continued from previous page...

Atom-1	Atom-2	Interatomic distance (Å)	Clash overlap (Å)
1:A:115:LEU:HD11	1:B:115:LEU:HD11	2.01	0.42
1:A:74:ARG:HA	1:A:188:PRO:HA	2.01	0.42
1:B:271:ASN:HB2	1:B:273:GLU:HG2	2.01	0.42
1:B:162:CYS:SG	1:B:164:SER:HB2	2.60	0.42
1:A:117:ILE:HG22	9:A:2014:HOH:O	2.20	0.42
1:A:109:MET:HE2	1:B:115:LEU:CB	2.50	0.41
1:B:111:ASN:HB2	1:B:112:PRO:HD2	2.02	0.41
1:A:99:HIS:O	1:A:100:TYR:C	2.58	0.41
1:B:261:ALA:HB2	1:B:267:VAL:HG21	2.03	0.41
1:A:57:VAL:HG12	1:A:114:HIS:CE1	2.56	0.40

There are no symmetry-related clashes.

5.3 Torsion angles [i](#)

5.3.1 Protein backbone [i](#)

In the following table, the Percentiles column shows the percent Ramachandran outliers of the chain as a percentile score with respect to all X-ray entries followed by that with respect to entries of similar resolution.

The Analysed column shows the number of residues for which the backbone conformation was analysed, and the total number of residues.

Mol	Chain	Analysed	Favoured	Allowed	Outliers	Percentiles	
1	A	259/275 (94%)	248 (96%)	11 (4%)	0	100	100
1	B	264/275 (96%)	249 (94%)	13 (5%)	2 (1%)	21	53
2	D	7/9 (78%)	6 (86%)	1 (14%)	0	100	100
All	All	530/559 (95%)	503 (95%)	25 (5%)	2 (0%)	36	70

All (2) Ramachandran outliers are listed below:

Mol	Chain	Res	Type
1	B	282	LYS
1	B	68	GLY

5.3.2 Protein sidechains

In the following table, the Percentiles column shows the percent sidechain outliers of the chain as a percentile score with respect to all X-ray entries followed by that with respect to entries of similar resolution.

The Analysed column shows the number of residues for which the sidechain conformation was analysed, and the total number of residues.

Mol	Chain	Analysed	Rotameric	Outliers	Percentiles	
1	A	218/229 (95%)	211 (97%)	7 (3%)	42	76
1	B	221/229 (96%)	214 (97%)	7 (3%)	42	76
2	D	6/6 (100%)	6 (100%)	0	100	100
All	All	445/464 (96%)	431 (97%)	14 (3%)	42	77

All (14) residues with a non-rotameric sidechain are listed below:

Mol	Chain	Res	Type
1	A	136	GLN
1	A	187	ASP
1	A	189	ASN
1	A	225	SER
1	A	238	CYS
1	A	247	SER
1	A	282	LYS
1	B	130	SER
1	B	164	SER
1	B	229	THR
1	B	238	CYS
1	B	252	PRO
1	B	274	CYS
1	B	298	GLU

Some sidechains can be flipped to improve hydrogen bonding and reduce clashes. All (3) such sidechains are listed below:

Mol	Chain	Res	Type
1	A	189	ASN
1	B	42	HIS
1	B	114	HIS

5.3.3 RNA [i](#)

There are no RNA molecules in this entry.

5.4 Non-standard residues in protein, DNA, RNA chains [i](#)

There are no non-standard protein/DNA/RNA residues in this entry.

5.5 Carbohydrates [i](#)

There are no carbohydrates in this entry.

5.6 Ligand geometry [i](#)

Of 9 ligands modelled in this entry, 3 are monoatomic - leaving 6 for Mogul analysis.

In the following table, the Counts columns list the number of bonds (or angles) for which Mogul statistics could be retrieved, the number of bonds (or angles) that are observed in the model and the number of bonds (or angles) that are defined in the Chemical Component Dictionary. The Link column lists molecule types, if any, to which the group is linked. The Z score for a bond length (or angle) is the number of standard deviations the observed value is removed from the expected value. A bond length (or angle) with $|Z| > 2$ is considered an outlier worth inspection. RMSZ is the root-mean-square of all Z scores of the bond lengths (or angles).

Mol	Type	Chain	Res	Link	Bond lengths			Bond angles		
					Counts	RMSZ	# Z > 2	Counts	RMSZ	# Z > 2
4	EDO	A	1301	-	3,3,3	0.69	0	2,2,2	0.28	0
5	EPE	B	1300	-	15,15,15	2.06	1 (6%)	18,20,20	1.80	6 (33%)
6	DMS	B	1301	-	3,3,3	0.46	0	3,3,3	1.29	0
4	EDO	B	1302	-	3,3,3	0.47	0	2,2,2	0.58	0
4	EDO	B	1304	-	3,3,3	0.60	0	2,2,2	0.07	0
8	NX6	D	1300	2	15,18,19	1.13	2 (13%)	16,22,24	1.72	5 (31%)

In the following table, the Chirals column lists the number of chiral outliers, the number of chiral centers analysed, the number of these observed in the model and the number defined in the Chemical Component Dictionary. Similar counts are reported in the Torsion and Rings columns. '-' means no outliers of that kind were identified.

Mol	Type	Chain	Res	Link	Chirals	Torsions	Rings
4	EDO	A	1301	-	-	0/1/1/1	0/0/0/0
5	EPE	B	1300	-	-	0/9/19/19	0/1/1/1
6	DMS	B	1301	-	-	0/0/0/0	0/0/0/0
4	EDO	B	1302	-	-	0/1/1/1	0/0/0/0

Continued on next page...

Continued from previous page...

Mol	Type	Chain	Res	Link	Chirals	Torsions	Rings
4	EDO	B	1304	-	-	0/1/1/1	0/0/0/0
8	NX6	D	1300	2	-	0/12/16/17	0/1/1/1

All (3) bond length outliers are listed below:

Mol	Chain	Res	Type	Atoms	Z	Observed(Å)	Ideal(Å)
5	B	1300	EPE	C10-S	-7.56	1.66	1.77
8	D	1300	NX6	C2-C3	-2.04	1.45	1.50
8	D	1300	NX6	O2-C1	2.16	1.39	1.35

All (11) bond angle outliers are listed below:

Mol	Chain	Res	Type	Atoms	Z	Observed(°)	Ideal(°)
5	B	1300	EPE	O3S-S-O1S	-3.66	102.33	111.27
8	D	1300	NX6	O1-C1-N	-2.85	120.06	124.85
5	B	1300	EPE	O3S-S-O2S	-2.77	104.51	111.27
5	B	1300	EPE	C2-C3-N4	2.07	114.72	110.64
8	D	1300	NX6	CA-N-C1	2.23	124.56	121.83
8	D	1300	NX6	O2-C1-N	2.41	115.59	110.53
5	B	1300	EPE	C5-C6-N1	2.69	115.94	110.64
8	D	1300	NX6	O2-C2-C3	2.71	116.12	109.41
5	B	1300	EPE	O2S-S-O1S	2.74	123.44	113.95
5	B	1300	EPE	O3S-S-C10	3.17	110.90	105.77
8	D	1300	NX6	C2-O2-C1	3.24	123.38	115.90

There are no chirality outliers.

There are no torsion outliers.

There are no ring outliers.

1 monomer is involved in 1 short contact:

Mol	Chain	Res	Type	Clashes	Symm-Clashes
8	D	1300	NX6	1	0

5.7 Other polymers [i](#)

There are no such residues in this entry.

5.8 Polymer linkage issues

There are no chain breaks in this entry.

6 Fit of model and data [i](#)

6.1 Protein, DNA and RNA chains [i](#)

In the following table, the column labelled ‘#RSRZ> 2’ contains the number (and percentage) of RSRZ outliers, followed by percent RSRZ outliers for the chain as percentile scores relative to all X-ray entries and entries of similar resolution. The OWAB column contains the minimum, median, 95th percentile and maximum values of the occupancy-weighted average B-factor per residue. The column labelled ‘Q< 0.9’ lists the number of (and percentage) of residues with an average occupancy less than 0.9.

Mol	Chain	Analysed	<RSRZ>	#RSRZ>2	OWAB(Å ²)	Q<0.9
1	A	262/275 (95%)	-0.40	3 (1%) 80 75	36, 59, 95, 135	0
1	B	266/275 (96%)	-0.06	11 (4%) 37 27	41, 70, 128, 166	0
2	D	8/9 (88%)	-0.31	1 (12%) 4 2	54, 63, 79, 86	0
All	All	536/559 (95%)	-0.23	15 (2%) 53 43	36, 64, 120, 166	0

All (15) RSRZ outliers are listed below:

Mol	Chain	Res	Type	RSRZ
1	B	207	SER	5.5
1	B	33	SER	5.2
1	B	208	CYS	4.5
1	B	278	THR	4.4
1	B	206	LYS	4.1
1	A	69	PRO	3.4
1	B	164	SER	3.0
1	B	34	SER	2.7
1	A	206	LYS	2.5
1	B	199	LEU	2.4
1	B	69	PRO	2.3
1	B	198	GLU	2.3
1	A	277	ALA	2.2
2	D	8	VAL	2.2
1	B	279	GLN	2.1

6.2 Non-standard residues in protein, DNA, RNA chains [i](#)

There are no non-standard protein/DNA/RNA residues in this entry.

6.3 Carbohydrates [i](#)

There are no carbohydrates in this entry.

6.4 Ligands [i](#)

In the following table, the Atoms column lists the number of modelled atoms in the group and the number defined in the chemical component dictionary. The B-factors column lists the minimum, median, 95th percentile and maximum values of B factors of atoms in the group. The column labelled 'Q< 0.9' lists the number of atoms with occupancy less than 0.9.

Mol	Type	Chain	Res	Atoms	RSCC	RSR	B-factors(Å ²)	Q<0.9
4	EDO	B	1304	4/4	0.84	0.39	73,84,89,93	0
3	ZN	B	1299	1/1	0.85	0.04	107,107,107,107	0
7	NA	B	1303	1/1	0.87	0.17	65,65,65,65	1
4	EDO	A	1301	4/4	0.90	0.27	65,72,73,77	0
8	NX6	D	1300	18/19	0.91	0.21	66,93,108,108	0
4	EDO	B	1302	4/4	0.92	0.22	59,59,60,61	0
5	EPE	B	1300	15/15	0.95	0.16	49,67,74,76	0
6	DMS	B	1301	4/4	0.96	0.13	54,54,56,64	0
3	ZN	A	1299	1/1	0.98	0.06	51,51,51,51	0

6.5 Other polymers [i](#)

There are no such residues in this entry.