



Full wwPDB X-ray Structure Validation Report ⓘ

Nov 4, 2024 – 08:48 AM EST

PDB ID : 8UWT
Title : A X-ray Crystallographic Structure Model of a Glycoside Hydrolase (GH) Family 39 (GH39)-like Enzyme Encoded within a Xylan Utilization Locus of the pSOL1 Megaplasmid of *Clostridium acetobutylicum*
Authors : St John, F.J.; Fujimoto, Z.
Deposited on : 2023-11-08
Resolution : 1.55 Å(reported)

This is a Full wwPDB X-ray Structure Validation Report for a publicly released PDB entry.

We welcome your comments at validation@mail.wwpdb.org

A user guide is available at

<https://www.wwpdb.org/validation/2017/XrayValidationReportHelp>

with specific help available everywhere you see the ⓘ symbol.

The types of validation reports are described at

<http://www.wwpdb.org/validation/2017/FAQs#types>.

The following versions of software and data (see [references ⓘ](#)) were used in the production of this report:

MolProbity : 4.02b-467
Mogul : 2022.3.0, CSD as543be (2022)
Xtriage (Phenix) : 1.20.1
EDS : 3.0
Percentile statistics : 20231227.v01 (using entries in the PDB archive December 27th 2023)
CCP4 : 9.0.003 (Gargrove)
Density-Fitness : 1.0.11
Ideal geometry (proteins) : Engh & Huber (2001)
Ideal geometry (DNA, RNA) : Parkinson et al. (1996)
Validation Pipeline (wwPDB-VP) : 2.39

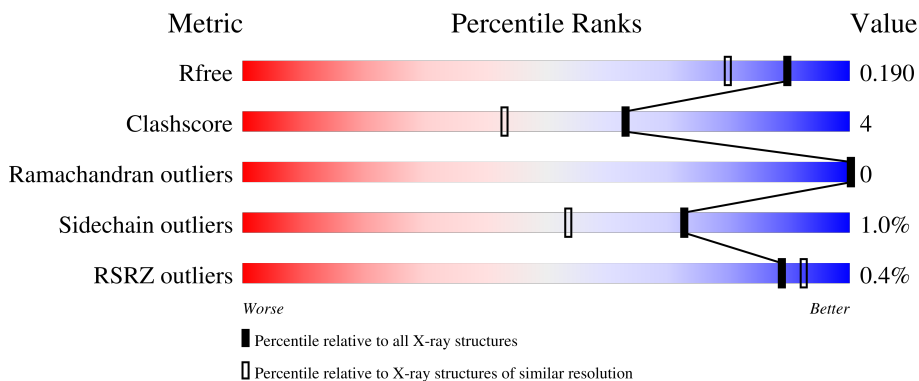
1 Overall quality at a glance

The following experimental techniques were used to determine the structure:

X-RAY DIFFRACTION

The reported resolution of this entry is 1.55 Å.

Percentile scores (ranging between 0-100) for global validation metrics of the entry are shown in the following graphic. The table shows the number of entries on which the scores are based.



Metric	Whole archive (#Entries)	Similar resolution (#Entries, resolution range(Å))
R_{free}	164625	1935 (1.56-1.56)
Clashscore	180529	2073 (1.56-1.56)
Ramachandran outliers	177936	2037 (1.56-1.56)
Sidechain outliers	177891	2034 (1.56-1.56)
RSRZ outliers	164620	1935 (1.56-1.56)

The table below summarises the geometric issues observed across the polymeric chains and their fit to the electron density. The red, orange, yellow and green segments of the lower bar indicate the fraction of residues that contain outliers for ≥ 3 , 2, 1 and 0 types of geometric quality criteria respectively. A grey segment represents the fraction of residues that are not modelled. The numeric value for each fraction is indicated below the corresponding segment, with a dot representing fractions $\leq 5\%$. The upper red bar (where present) indicates the fraction of residues that have poor fit to the electron density. The numeric value is given above the bar.

Mol	Chain	Length	Quality of chain
1	A	408	
1	B	408	

The following table lists non-polymeric compounds, carbohydrate monomers and non-standard residues in protein, DNA, RNA chains that are outliers for geometric or electron-density-fit criteria:

Mol	Type	Chain	Res	Chirality	Geometry	Clashes	Electron density
3	FMT	A	517	-	-	X	-

2 Entry composition [i](#)

There are 7 unique types of molecules in this entry. The entry contains 7464 atoms, of which 0 are hydrogens and 0 are deuteriums.

In the tables below, the ZeroOcc column contains the number of atoms modelled with zero occupancy, the AltConf column contains the number of residues with at least one atom in alternate conformation and the Trace column contains the number of residues modelled with at most 2 atoms.

- Molecule 1 is a protein called Possible beta-xylosidase diverged, family 5/39 of glycosyl hydrolases and alpha-amylase C (Greek key) C-terminal domain.

Mol	Chain	Residues	Atoms					ZeroOcc	AltConf	Trace
			Total	C	N	O	S			
1	A	400	3224	2036	565	608	15	0	15	0
1	B	400	3218	2030	567	605	16	0	11	0

There are 18 discrepancies between the modelled and reference sequences:

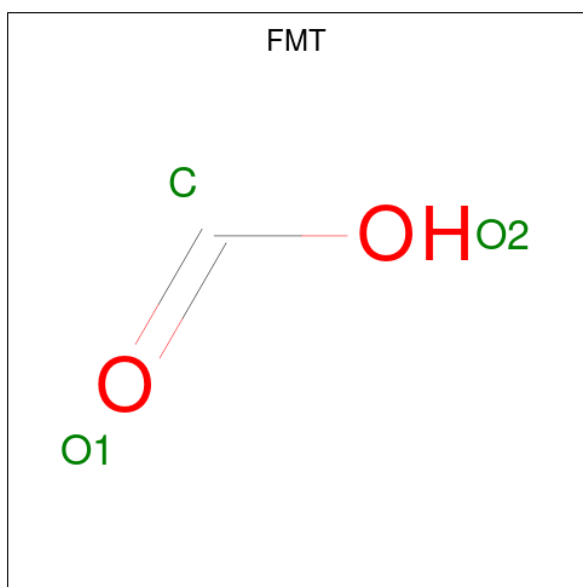
Chain	Residue	Modelled	Actual	Comment	Reference
A	1	MET	-	initiating methionine	UNP Q97TI4
A	401	LEU	-	expression tag	UNP Q97TI4
A	402	GLU	-	expression tag	UNP Q97TI4
A	403	HIS	-	expression tag	UNP Q97TI4
A	404	HIS	-	expression tag	UNP Q97TI4
A	405	HIS	-	expression tag	UNP Q97TI4
A	406	HIS	-	expression tag	UNP Q97TI4
A	407	HIS	-	expression tag	UNP Q97TI4
A	408	HIS	-	expression tag	UNP Q97TI4
B	1	MET	-	initiating methionine	UNP Q97TI4
B	401	LEU	-	expression tag	UNP Q97TI4
B	402	GLU	-	expression tag	UNP Q97TI4
B	403	HIS	-	expression tag	UNP Q97TI4
B	404	HIS	-	expression tag	UNP Q97TI4
B	405	HIS	-	expression tag	UNP Q97TI4
B	406	HIS	-	expression tag	UNP Q97TI4
B	407	HIS	-	expression tag	UNP Q97TI4
B	408	HIS	-	expression tag	UNP Q97TI4

- Molecule 2 is GLYCEROL (three-letter code: GOL) (formula: C₃H₈O₃).



Mol	Chain	Residues	Atoms			ZeroOcc	AltConf
2	A	1	Total	C	O	0	1
			12	6	6		
2	B	1	Total	C	O	0	0
			6	3	3		
2	B	1	Total	C	O	0	0
			6	3	3		

- Molecule 3 is FORMIC ACID (three-letter code: FMT) (formula: CH_2O_2).



Mol	Chain	Residues	Atoms			ZeroOcc	AltConf
3	A	1	Total	C	O	0	0
			3	1	2		

Continued on next page...

Continued from previous page...

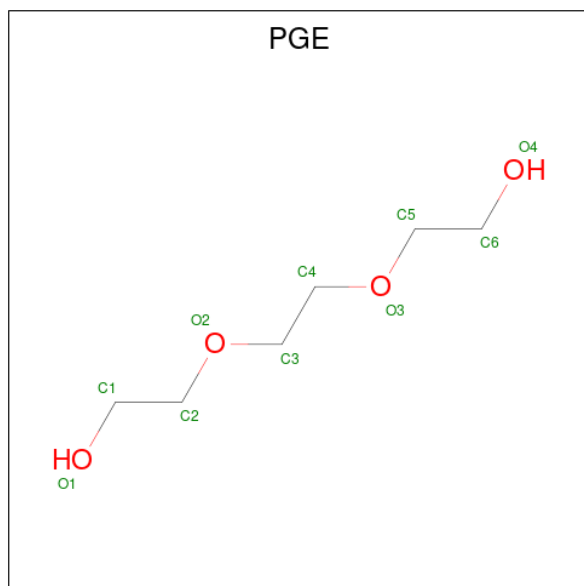
Mol	Chain	Residues	Atoms			ZeroOcc	AltConf
3	A	1	Total 3	C 1	O 2	0	0
3	A	1	Total 3	C 1	O 2	0	0
3	A	1	Total 3	C 1	O 2	0	0
3	A	1	Total 3	C 1	O 2	0	0
3	A	1	Total 3	C 1	O 2	0	0
3	A	1	Total 3	C 1	O 2	0	0
3	A	1	Total 3	C 1	O 2	0	0
3	A	1	Total 3	C 1	O 2	0	0
3	A	1	Total 3	C 1	O 2	0	0
3	A	1	Total 3	C 1	O 2	0	0
3	A	1	Total 3	C 1	O 2	0	0
3	A	1	Total 3	C 1	O 2	0	0
3	A	1	Total 3	C 1	O 2	0	0
3	A	1	Total 3	C 1	O 2	0	0
3	A	1	Total 3	C 1	O 2	0	0
3	A	1	Total 3	C 1	O 2	0	0
3	A	1	Total 3	C 1	O 2	0	0
3	B	1	Total 6	C 2	O 4	0	1
3	B	1	Total 6	C 2	O 4	0	1
3	B	1	Total 3	C 1	O 2	0	0
3	B	1	Total 3	C 1	O 2	0	0
3	B	1	Total 3	C 1	O 2	0	0
3	B	1	Total 3	C 1	O 2	0	0

Continued on next page...

Continued from previous page...

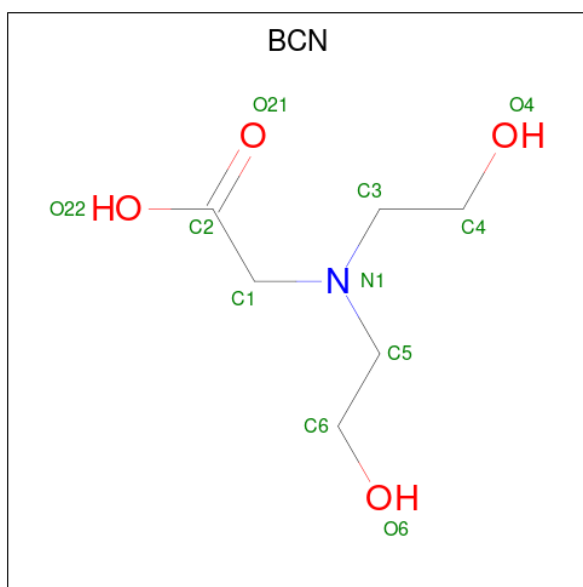
Mol	Chain	Residues	Atoms			ZeroOcc	AltConf
3	B	1	Total	C	O	0	0
			3	1	2		
3	B	1	Total	C	O	0	0
			3	1	2		
3	B	1	Total	C	O	0	0
			3	1	2		
3	B	1	Total	C	O	0	0
			3	1	2		
3	B	1	Total	C	O	0	0
			3	1	2		
3	B	1	Total	C	O	0	0
			3	1	2		
3	B	1	Total	C	O	0	0
			3	1	2		

- Molecule 4 is TRIETHYLENE GLYCOL (three-letter code: PGE) (formula: C₆H₁₄O₄).



Mol	Chain	Residues	Atoms			ZeroOcc	AltConf
4	B	1	Total	C	O	0	0
			7	4	3		

- Molecule 5 is BICINE (three-letter code: BCN) (formula: C₆H₁₃NO₄).



Mol	Chain	Residues	Atoms				ZeroOcc	AltConf
5	B	1	Total	C	N	O	0	0
			11	6	1	4		

- Molecule 6 is SODIUM ION (three-letter code: NA) (formula: Na).

Mol	Chain	Residues	Atoms		ZeroOcc	AltConf
6	B	1	Total	Na	0	0
			1	1		

- Molecule 7 is water.

Mol	Chain	Residues	Atoms		ZeroOcc	AltConf
7	A	435	Total	O	0	3
			438	438		
7	B	437	Total	O	0	5
			442	442		

4 Data and refinement statistics

Property	Value	Source
Space group	P 21 21 21	Depositor
Cell constants a, b, c, α , β , γ	75.41Å 88.25Å 106.59Å 90.00° 90.00° 90.00°	Depositor
Resolution (Å)	35.89 – 1.55 35.89 – 1.55	Depositor EDS
% Data completeness (in resolution range)	80.5 (35.89-1.55) 80.5 (35.89-1.55)	Depositor EDS
R_{merge}	0.15	Depositor
R_{sym}	(Not available)	Depositor
$\langle I/\sigma(I) \rangle$ ¹	1.83 (at 1.55Å)	Xtrriage
Refinement program	REFMAC 5.8.0238	Depositor
R, R_{free}	0.142 , 0.180 0.156 , 0.190	Depositor DCC
R_{free} test set	5349 reflections (5.18%)	wwPDB-VP
Wilson B-factor (Å ²)	15.7	Xtrriage
Anisotropy	0.245	Xtrriage
Bulk solvent k_{sol} (e/Å ³), B_{sol} (Å ²)	0.36 , 44.8	EDS
L-test for twinning ²	$\langle L \rangle = 0.49$, $\langle L^2 \rangle = 0.33$	Xtrriage
Estimated twinning fraction	No twinning to report.	Xtrriage
F_o, F_c correlation	0.97	EDS
Total number of atoms	7464	wwPDB-VP
Average B, all atoms (Å ²)	19.0	wwPDB-VP

Xtrriage's analysis on translational NCS is as follows: *The largest off-origin peak in the Patterson function is 5.14% of the height of the origin peak. No significant pseudotranslation is detected.*

¹Intensities estimated from amplitudes.

²Theoretical values of $\langle |L| \rangle$, $\langle L^2 \rangle$ for acentric reflections are 0.5, 0.333 respectively for untwinned datasets, and 0.375, 0.2 for perfectly twinned datasets.

5 Model quality [i](#)

5.1 Standard geometry [i](#)

Bond lengths and bond angles in the following residue types are not validated in this section: FMT, BCN, GOL, PGE, NA

The Z score for a bond length (or angle) is the number of standard deviations the observed value is removed from the expected value. A bond length (or angle) with $|Z| > 5$ is considered an outlier worth inspection. RMSZ is the root-mean-square of all Z scores of the bond lengths (or angles).

Mol	Chain	Bond lengths		Bond angles	
		RMSZ	# $ Z > 5$	RMSZ	# $ Z > 5$
1	A	0.71	1/3322 (0.0%)	0.83	2/4521 (0.0%)
1	B	0.69	0/3301	0.80	1/4492 (0.0%)
All	All	0.70	1/6623 (0.0%)	0.81	3/9013 (0.0%)

All (1) bond length outliers are listed below:

Mol	Chain	Res	Type	Atoms	Z	Observed(Å)	Ideal(Å)
1	A	29	GLU	CD-OE1	5.02	1.31	1.25

All (3) bond angle outliers are listed below:

Mol	Chain	Res	Type	Atoms	Z	Observed(°)	Ideal(°)
1	A	248	ARG	NE-CZ-NH2	-7.20	116.70	120.30
1	A	70	ARG	NE-CZ-NH2	-5.67	117.47	120.30
1	B	287	TYR	CB-CG-CD1	5.03	124.02	121.00

There are no chirality outliers.

There are no planarity outliers.

5.2 Too-close contacts [i](#)

In the following table, the Non-H and H(model) columns list the number of non-hydrogen atoms and hydrogen atoms in the chain respectively. The H(added) column lists the number of hydrogen atoms added and optimized by MolProbity. The Clashes column lists the number of clashes within the asymmetric unit, whereas Symm-Clashes lists symmetry-related clashes.

Mol	Chain	Non-H	H(model)	H(added)	Clashes	Symm-Clashes
1	A	3224	0	3118	25	0
1	B	3218	0	3098	23	0

Continued on next page...

Continued from previous page...

Mol	Chain	Non-H	H(model)	H(added)	Clashes	Symm-Clashes
2	A	12	0	16	0	0
2	B	12	0	16	2	0
3	A	48	0	16	7	0
3	B	51	0	17	1	0
4	B	7	0	9	2	0
5	B	11	0	12	0	0
6	B	1	0	0	0	0
7	A	438	0	0	12	0
7	B	442	0	0	7	0
All	All	7464	0	6302	50	0

The all-atom clashscore is defined as the number of clashes found per 1000 atoms (including hydrogen atoms). The all-atom clashscore for this structure is 4.

All (50) close contacts within the same asymmetric unit are listed below, sorted by their clash magnitude.

Atom-1	Atom-2	Interatomic distance (Å)	Clash overlap (Å)
1:B:204[B]:ARG:HG3	7:B:678:HOH:O	1.76	0.83
1:A:204[B]:ARG:HG2	7:A:637:HOH:O	1.81	0.80
1:B:96[B]:MET:HA	1:B:96[B]:MET:HE2	1.66	0.77
1:A:262:ASN:HD22	3:A:517:FMT:H	1.57	0.70
1:A:57:HIS:NE2	7:A:603:HOH:O	2.26	0.68
1:B:389:ASN:HB2	4:B:501:PGE:H32	1.78	0.66
1:A:151:ARG:HD2	7:A:873:HOH:O	1.97	0.65
1:A:134:ASN:N	7:A:602:HOH:O	2.30	0.65
1:A:262:ASN:HD22	3:A:517:FMT:C	2.10	0.64
1:B:96[B]:MET:HA	1:B:96[B]:MET:CE	2.28	0.64
1:B:109:GLN:NE2	7:B:602:HOH:O	2.15	0.63
1:B:235:GLN:HE21	1:B:238:ALA:H	1.46	0.63
1:A:135:ASN:N	7:A:602:HOH:O	2.21	0.61
1:A:357[B]:ASN:ND2	7:A:601:HOH:O	2.15	0.61
1:A:367[B]:ASN:ND2	3:A:516:FMT:O2	2.37	0.58
1:A:370:PHE:CD1	1:A:372:LYS:HE2	2.41	0.55
4:B:501:PGE:H12	7:B:780:HOH:O	2.06	0.55
1:B:205:ASP:HB3	7:B:670:HOH:O	2.07	0.55
3:B:509:FMT:C	3:B:512:FMT:O2	2.55	0.55
1:A:55:PHE:HB2	7:A:896:HOH:O	2.08	0.53
1:A:189:CYS:HA	1:A:221:ALA:O	2.11	0.51
1:B:204[B]:ARG:NH2	7:B:609:HOH:O	2.44	0.51
1:B:167:ASN:HB3	1:B:170[B]:ASN:OD1	2.10	0.50
1:A:336:ILE:O	1:A:380:THR:HA	2.13	0.48

Continued on next page...

Continued from previous page...

Atom-1	Atom-2	Interatomic distance (Å)	Clash overlap (Å)
1:A:204[B]:ARG:CG	7:A:637:HOH:O	2.50	0.47
1:B:189:CYS:HA	1:B:221:ALA:O	2.13	0.47
1:B:31:LYS:HA	1:B:32:PRO:C	2.36	0.46
1:A:30[B]:SER:HB2	7:A:624:HOH:O	2.15	0.46
1:A:23:SER:OG	1:A:26:GLY:HA3	2.16	0.46
1:B:159:ILE:HG13	1:B:187:VAL:HB	1.97	0.45
1:A:357[B]:ASN:CG	7:A:601:HOH:O	2.54	0.45
1:B:32:PRO:HG3	1:B:271[B]:MET:CE	2.46	0.45
1:A:376:VAL:CG1	3:A:513:FMT:H	2.47	0.44
1:A:31:LYS:HA	1:A:32:PRO:C	2.37	0.44
1:B:96[B]:MET:CE	1:B:96[B]:MET:CA	2.96	0.44
1:B:23:SER:OG	1:B:26:GLY:HA3	2.18	0.44
1:B:265:GLY:O	1:B:271[B]:MET:HE2	2.19	0.43
1:A:250[B]:LYS:NZ	7:A:609:HOH:O	2.35	0.43
1:B:258:TRP:CZ2	1:B:261:THR:HA	2.53	0.43
1:A:118:PHE:HB2	3:A:506:FMT:H	2.01	0.43
1:B:88[B]:ARG:NH2	7:B:607:HOH:O	2.40	0.43
1:B:72:LYS:NZ	7:B:627:HOH:O	2.52	0.42
1:A:360:ASP:H	3:A:512:FMT:C	2.33	0.42
1:B:59:GLN:HE21	2:B:502:GOL:C1	2.32	0.42
1:A:345:SER:OG	2:B:503:GOL:H12	2.20	0.42
1:B:223:ASN:O	1:B:255:CYS:HB2	2.20	0.41
1:A:164[B]:SER:HB2	7:A:616:HOH:O	2.20	0.41
1:B:357[B]:ASN:OD1	1:B:357[B]:ASN:O	2.39	0.41
1:A:338:ASN:ND2	3:A:503:FMT:H	2.35	0.41
1:B:136:VAL:HG23	1:B:140[B]:ASP:OD2	2.21	0.40

There are no symmetry-related clashes.

5.3 Torsion angles

5.3.1 Protein backbone

In the following table, the Percentiles column shows the percent Ramachandran outliers of the chain as a percentile score with respect to all X-ray entries followed by that with respect to entries of similar resolution.

The Analysed column shows the number of residues for which the backbone conformation was analysed, and the total number of residues.

Mol	Chain	Analysed	Favoured	Allowed	Outliers	Percentiles	
1	A	413/408 (101%)	398 (96%)	15 (4%)	0	100	100
1	B	409/408 (100%)	394 (96%)	15 (4%)	0	100	100
All	All	822/816 (101%)	792 (96%)	30 (4%)	0	100	100

There are no Ramachandran outliers to report.

5.3.2 Protein sidechains [i](#)

In the following table, the Percentiles column shows the percent sidechain outliers of the chain as a percentile score with respect to all X-ray entries followed by that with respect to entries of similar resolution.

The Analysed column shows the number of residues for which the sidechain conformation was analysed, and the total number of residues.

Mol	Chain	Analysed	Rotameric	Outliers	Percentiles	
1	A	353/346 (102%)	347 (98%)	6 (2%)	56	29
1	B	349/346 (101%)	348 (100%)	1 (0%)	91	84
All	All	702/692 (101%)	695 (99%)	7 (1%)	73	53

All (7) residues with a non-rotameric sidechain are listed below:

Mol	Chain	Res	Type
1	A	10	ARG
1	A	61	ILE
1	A	324	LEU
1	A	346	SER
1	A	400	ARG
1	A	401	LEU
1	B	5	LEU

Sometimes sidechains can be flipped to improve hydrogen bonding and reduce clashes. All (6) such sidechains are listed below:

Mol	Chain	Res	Type
1	A	56	ASN
1	A	58	GLN
1	A	262	ASN
1	A	303	ASN
1	B	235	GLN
1	B	316	ASN

5.3.3 RNA [i](#)

There are no RNA molecules in this entry.

5.4 Non-standard residues in protein, DNA, RNA chains [i](#)

There are no non-standard protein/DNA/RNA residues in this entry.

5.5 Carbohydrates [i](#)

There are no oligosaccharides in this entry.

5.6 Ligand geometry [i](#)

Of 40 ligands modelled in this entry, 1 is monoatomic - leaving 39 for Mogul analysis.

In the following table, the Counts columns list the number of bonds (or angles) for which Mogul statistics could be retrieved, the number of bonds (or angles) that are observed in the model and the number of bonds (or angles) that are defined in the Chemical Component Dictionary. The Link column lists molecule types, if any, to which the group is linked. The Z score for a bond length (or angle) is the number of standard deviations the observed value is removed from the expected value. A bond length (or angle) with $|Z| > 2$ is considered an outlier worth inspection. RMSZ is the root-mean-square of all Z scores of the bond lengths (or angles).

Mol	Type	Chain	Res	Link	Bond lengths			Bond angles		
					Counts	RMSZ	$\# Z > 2$	Counts	RMSZ	$\# Z > 2$
3	FMT	A	510	-	2,2,2	0.24	0	1,1,1	0.08	0
3	FMT	A	511	-	2,2,2	0.28	0	1,1,1	0.17	0
3	FMT	A	517	-	2,2,2	0.44	0	1,1,1	0.07	0
3	FMT	B	513	-	2,2,2	0.30	0	1,1,1	0.10	0
5	BCN	B	504	-	10,10,10	0.74	0	11,11,11	0.79	0
3	FMT	B	505[B]	-	2,2,2	0.32	0	1,1,1	0.07	0
3	FMT	B	506[A]	-	2,2,2	0.32	0	1,1,1	0.10	0
3	FMT	B	517	-	2,2,2	0.39	0	1,1,1	0.06	0
3	FMT	A	516	-	2,2,2	0.23	0	1,1,1	0.15	0
3	FMT	A	507	-	2,2,2	0.28	0	1,1,1	0.13	0
3	FMT	A	509	-	2,2,2	0.31	0	1,1,1	0.14	0
3	FMT	B	515	-	2,2,2	0.17	0	1,1,1	0.17	0
3	FMT	B	516	-	2,2,2	0.48	0	1,1,1	0.02	0
2	GOL	B	503	-	5,5,5	0.13	0	5,5,5	0.44	0
3	FMT	B	510	-	2,2,2	0.37	0	1,1,1	0.05	0
3	FMT	A	503	-	2,2,2	0.88	0	1,1,1	0.18	0
3	FMT	A	504	-	2,2,2	0.39	0	1,1,1	0.09	0
3	FMT	B	514	-	2,2,2	0.36	0	1,1,1	0.01	0

Mol	Type	Chain	Res	Link	Bond lengths			Bond angles		
					Counts	RMSZ	# Z > 2	Counts	RMSZ	# Z > 2
3	FMT	B	509	-	2,2,2	0.17	0	1,1,1	0.19	0
3	FMT	A	508	-	2,2,2	0.25	0	1,1,1	0.10	0
4	PGE	B	501	-	6,6,9	0.39	0	5,5,8	0.27	0
3	FMT	B	505[A]	-	2,2,2	0.27	0	1,1,1	0.09	0
3	FMT	A	506	-	2,2,2	0.18	0	1,1,1	0.11	0
3	FMT	A	513	-	2,2,2	0.43	0	1,1,1	0.09	0
2	GOL	A	501[B]	-	5,5,5	0.16	0	5,5,5	0.24	0
2	GOL	B	502	-	5,5,5	0.22	0	5,5,5	0.51	0
3	FMT	A	505	-	2,2,2	0.32	0	1,1,1	0.12	0
3	FMT	B	508	-	2,2,2	0.45	0	1,1,1	0.03	0
3	FMT	A	502	-	2,2,2	0.26	0	1,1,1	0.26	0
3	FMT	B	506[B]	-	2,2,2	0.43	0	1,1,1	0.04	0
3	FMT	A	514	-	2,2,2	0.46	0	1,1,1	0.04	0
3	FMT	B	519	-	2,2,2	0.35	0	1,1,1	0.11	0
3	FMT	B	511	-	2,2,2	0.28	0	1,1,1	0.12	0
3	FMT	A	512	-	2,2,2	0.16	0	1,1,1	0.02	0
3	FMT	B	507	-	2,2,2	0.23	0	1,1,1	0.19	0
3	FMT	B	512	-	2,2,2	0.70	0	1,1,1	0.05	0
2	GOL	A	501[A]	-	5,5,5	0.20	0	5,5,5	0.48	0
3	FMT	B	518	-	2,2,2	0.26	0	1,1,1	0.11	0
3	FMT	A	515	-	2,2,2	0.27	0	1,1,1	0.15	0

In the following table, the Chirals column lists the number of chiral outliers, the number of chiral centers analysed, the number of these observed in the model and the number defined in the Chemical Component Dictionary. Similar counts are reported in the Torsion and Rings columns. '-' means no outliers of that kind were identified.

Mol	Type	Chain	Res	Link	Chirals	Torsions	Rings
2	GOL	A	501[B]	-	-	0/4/4/4	-
2	GOL	B	502	-	-	3/4/4/4	-
5	BCN	B	504	-	-	2/10/10/10	-
2	GOL	A	501[A]	-	-	2/4/4/4	-
4	PGE	B	501	-	-	1/4/4/7	-
2	GOL	B	503	-	-	2/4/4/4	-

There are no bond length outliers.

There are no bond angle outliers.

There are no chirality outliers.

All (10) torsion outliers are listed below:

Mol	Chain	Res	Type	Atoms
2	B	503	GOL	C1-C2-C3-O3
2	A	501[A]	GOL	O1-C1-C2-C3
2	B	502	GOL	O1-C1-C2-C3
2	B	502	GOL	C1-C2-C3-O3
2	B	502	GOL	O2-C2-C3-O3
2	B	503	GOL	O2-C2-C3-O3
2	A	501[A]	GOL	O1-C1-C2-O2
4	B	501	PGE	O2-C3-C4-O3
5	B	504	BCN	C4-C3-N1-C5
5	B	504	BCN	C4-C3-N1-C1

There are no ring outliers.

11 monomers are involved in 12 short contacts:

Mol	Chain	Res	Type	Clashes	Symm-Clashes
3	A	517	FMT	2	0
3	A	516	FMT	1	0
2	B	503	GOL	1	0
3	A	503	FMT	1	0
3	B	509	FMT	1	0
4	B	501	PGE	2	0
3	A	506	FMT	1	0
3	A	513	FMT	1	0
2	B	502	GOL	1	0
3	A	512	FMT	1	0
3	B	512	FMT	1	0

5.7 Other polymers [i](#)

There are no such residues in this entry.

5.8 Polymer linkage issues [i](#)

There are no chain breaks in this entry.

6 Fit of model and data [i](#)

6.1 Protein, DNA and RNA chains [i](#)

In the following table, the column labelled ‘#RSRZ > 2’ contains the number (and percentage) of RSRZ outliers, followed by percent RSRZ outliers for the chain as percentile scores relative to all X-ray entries and entries of similar resolution. The OWAB column contains the minimum, median, 95th percentile and maximum values of the occupancy-weighted average B-factor per residue. The column labelled ‘Q < 0.9’ lists the number of (and percentage) of residues with an average occupancy less than 0.9.

Mol	Chain	Analysed	<RSRZ>	#RSRZ>2	OWAB(Å ²)	Q<0.9
1	A	400/408 (98%)	-0.44	1 (0%) 90 93	5, 15, 26, 51	15 (3%)
1	B	400/408 (98%)	-0.32	2 (0%) 87 91	7, 16, 31, 54	11 (2%)
All	All	800/816 (98%)	-0.38	3 (0%) 89 92	5, 15, 29, 54	26 (3%)

All (3) RSRZ outliers are listed below:

Mol	Chain	Res	Type	RSRZ
1	B	401	LEU	3.9
1	B	55	PHE	3.0
1	A	401	LEU	2.4

6.2 Non-standard residues in protein, DNA, RNA chains [i](#)

There are no non-standard protein/DNA/RNA residues in this entry.

6.3 Carbohydrates [i](#)

There are no monosaccharides in this entry.

6.4 Ligands [i](#)

In the following table, the Atoms column lists the number of modelled atoms in the group and the number defined in the chemical component dictionary. The B-factors column lists the minimum, median, 95th percentile and maximum values of B factors of atoms in the group. The column labelled ‘Q < 0.9’ lists the number of atoms with occupancy less than 0.9.

Mol	Type	Chain	Res	Atoms	RSCC	RSR	B-factors(Å ²)	Q<0.9
3	FMT	A	515	3/3	0.70	0.16	48,48,52,58	0
3	FMT	B	507	3/3	0.76	0.14	50,50,50,55	0

Continued on next page...

Continued from previous page...

Mol	Type	Chain	Res	Atoms	RSCC	RSR	B-factors(Å ²)	Q<0.9
3	FMT	A	510	3/3	0.78	0.16	52,52,53,53	0
3	FMT	B	517	3/3	0.78	0.14	47,47,50,54	0
3	FMT	A	502	3/3	0.80	0.13	48,48,50,50	0
3	FMT	A	504	3/3	0.81	0.12	45,45,46,49	0
3	FMT	A	516	3/3	0.81	0.12	42,42,49,58	0
3	FMT	A	509	3/3	0.81	0.12	37,37,48,51	0
2	GOL	B	502	6/6	0.81	0.16	35,42,50,51	0
3	FMT	B	511	3/3	0.82	0.14	46,46,52,57	0
3	FMT	B	515	3/3	0.84	0.13	46,46,47,56	0
3	FMT	B	512	3/3	0.84	0.17	30,30,44,46	0
3	FMT	A	511	3/3	0.85	0.11	39,39,43,52	0
3	FMT	B	508	3/3	0.85	0.12	42,42,47,51	0
3	FMT	A	517	3/3	0.85	0.13	40,40,44,50	0
3	FMT	A	514	3/3	0.86	0.10	38,38,42,48	0
3	FMT	B	516	3/3	0.86	0.10	43,43,44,49	0
2	GOL	B	503	6/6	0.86	0.12	39,45,47,51	0
3	FMT	B	518	3/3	0.86	0.13	49,49,53,59	0
3	FMT	A	507	3/3	0.87	0.10	49,49,52,54	0
3	FMT	B	513	3/3	0.87	0.11	44,44,44,48	0
3	FMT	B	509	3/3	0.88	0.15	24,24,35,39	0
3	FMT	A	503	3/3	0.88	0.17	33,33,33,35	0
2	GOL	A	501[B]	6/6	0.88	0.11	12,15,16,18	6
2	GOL	A	501[A]	6/6	0.88	0.11	19,27,28,29	6
3	FMT	B	510	3/3	0.89	0.11	40,40,47,51	0
3	FMT	A	506	3/3	0.89	0.11	28,28,32,33	0
3	FMT	B	519	3/3	0.89	0.10	40,40,44,53	0
3	FMT	A	508	3/3	0.90	0.10	42,42,46,46	0
3	FMT	A	512	3/3	0.90	0.16	28,28,28,38	0
3	FMT	B	506[A]	3/3	0.90	0.12	32,32,46,49	3
3	FMT	B	506[B]	3/3	0.90	0.12	7,7,7,7	3
4	PGE	B	501	7/10	0.90	0.11	21,35,39,43	0
3	FMT	B	514	3/3	0.91	0.11	37,37,43,45	0
3	FMT	A	505	3/3	0.92	0.17	25,25,29,37	0
3	FMT	A	513	3/3	0.94	0.18	31,31,39,41	0
5	BCN	B	504	11/11	0.94	0.08	16,21,27,29	0
6	NA	B	520	1/1	0.94	0.07	25,25,25,25	0
3	FMT	B	505[A]	3/3	0.97	0.05	24,24,24,25	3
3	FMT	B	505[B]	3/3	0.97	0.05	8,8,8,8	3

6.5 Other polymers [\(i\)](#)

There are no such residues in this entry.