



Full wwPDB EM Validation Report ⓘ

Feb 18, 2023 – 01:23 PM EST

PDB ID : 7UXC
EMDB ID : EMD-26857
Title : cryo-EM structure of the mTORC1-TFEB-Rag-Ragulator complex with symmetry expansion
Authors : Cui, Z.; Hurley, J.
Deposited on : 2022-05-05
Resolution : 3.20 Å(reported)

This is a Full wwPDB EM Validation Report for a publicly released PDB entry.

We welcome your comments at validation@mail.wwpdb.org

A user guide is available at

<https://www.wwpdb.org/validation/2017/EMValidationReportHelp>

with specific help available everywhere you see the ⓘ symbol.

The types of validation reports are described at

<http://www.wwpdb.org/validation/2017/FAQs#types>.

The following versions of software and data (see [references ⓘ](#)) were used in the production of this report:

EMDB validation analysis : 0.0.1.dev43
Mogul : 1.8.5 (274361), CSD as541be (2020)
MolProbity : 4.02b-467
buster-report : 1.1.7 (2018)
Percentile statistics : 20191225.v01 (using entries in the PDB archive December 25th 2019)
MapQ : 1.9.9
Ideal geometry (proteins) : Engh & Huber (2001)
Ideal geometry (DNA, RNA) : Parkinson et al. (1996)
Validation Pipeline (wwPDB-VP) : 2.32.1

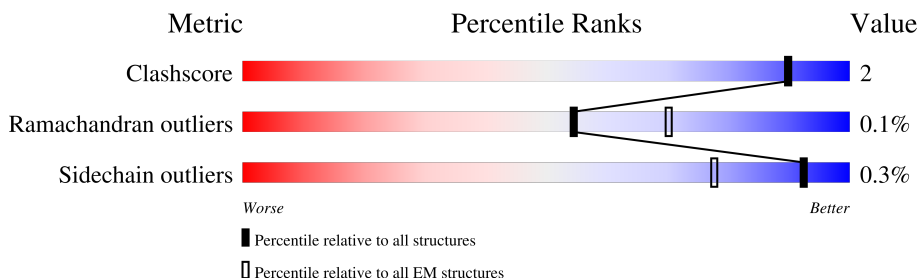
1 Overall quality at a glance i

The following experimental techniques were used to determine the structure:

ELECTRON MICROSCOPY

The reported resolution of this entry is 3.20 Å.

Percentile scores (ranging between 0-100) for global validation metrics of the entry are shown in the following graphic. The table shows the number of entries on which the scores are based.



Metric	Whole archive (#Entries)	EM structures (#Entries)
Clashscore	158937	4297
Ramachandran outliers	154571	4023
Sidechain outliers	154315	3826

The table below summarises the geometric issues observed across the polymeric chains and their fit to the map. The red, orange, yellow and green segments of the bar indicate the fraction of residues that contain outliers for ≥ 3 , 2, 1 and 0 types of geometric quality criteria respectively. A grey segment represents the fraction of residues that are not modelled. The numeric value for each fraction is indicated below the corresponding segment, with a dot representing fractions $\leq 5\%$. The upper red bar (where present) indicates the fraction of residues that have poor fit to the EM map (all-atom inclusion $< 40\%$). The numeric value is given above the bar.

Mol	Chain	Length	Quality of chain
1	A	2549	<div style="display: flex; align-items: center;"> <div style="width: 25%; height: 10px; background-color: red; margin-right: 5px;"></div> <div style="width: 58%; height: 10px; background-color: green; margin-right: 5px;"></div> <div style="width: 14%; height: 10px; background-color: grey; margin-right: 5px;"></div> </div> <p style="margin-left: 25px;">25% 83% 14%</p>
2	B	326	<div style="display: flex; align-items: center;"> <div style="width: 58%; height: 10px; background-color: red; margin-right: 5px;"></div> <div style="width: 34%; height: 10px; background-color: green; margin-right: 5px;"></div> <div style="width: 5%; height: 10px; background-color: yellow; margin-right: 5px;"></div> <div style="width: 5%; height: 10px; background-color: grey; margin-right: 5px;"></div> </div> <p style="margin-left: 25px;">58% 92% 5%</p>
3	C	1335	<div style="display: flex; align-items: center;"> <div style="width: 1%; height: 10px; background-color: red; margin-right: 5px;"></div> <div style="width: 80%; height: 10px; background-color: green; margin-right: 5px;"></div> <div style="width: 15%; height: 10px; background-color: grey; margin-right: 5px;"></div> </div> <p style="margin-left: 25px;">81% 15%</p>
4	D	313	<div style="display: flex; align-items: center;"> <div style="width: 1%; height: 10px; background-color: red; margin-right: 5px;"></div> <div style="width: 89%; height: 10px; background-color: green; margin-right: 5px;"></div> <div style="width: 5%; height: 10px; background-color: yellow; margin-right: 5px;"></div> <div style="width: 5%; height: 10px; background-color: grey; margin-right: 5px;"></div> </div> <p style="margin-left: 25px;">90% 5% 5%</p>
4	K	313	<div style="display: flex; align-items: center;"> <div style="width: 11%; height: 10px; background-color: red; margin-right: 5px;"></div> <div style="width: 76%; height: 10px; background-color: green; margin-right: 5px;"></div> <div style="width: 8%; height: 10px; background-color: yellow; margin-right: 5px;"></div> <div style="width: 5%; height: 10px; background-color: grey; margin-right: 5px;"></div> </div> <p style="margin-left: 25px;">11% 87% 8% 5%</p>
5	E	399	<div style="display: flex; align-items: center;"> <div style="width: 1%; height: 10px; background-color: red; margin-right: 5px;"></div> <div style="width: 66%; height: 10px; background-color: green; margin-right: 5px;"></div> <div style="width: 3%; height: 10px; background-color: yellow; margin-right: 5px;"></div> <div style="width: 30%; height: 10px; background-color: grey; margin-right: 5px;"></div> </div> <p style="margin-left: 25px;">67% 30%</p>
5	L	399	<div style="display: flex; align-items: center;"> <div style="width: 21%; height: 10px; background-color: red; margin-right: 5px;"></div> <div style="width: 43%; height: 10px; background-color: green; margin-right: 5px;"></div> <div style="width: 6%; height: 10px; background-color: yellow; margin-right: 5px;"></div> <div style="width: 31%; height: 10px; background-color: grey; margin-right: 5px;"></div> </div> <p style="margin-left: 25px;">21% 64% 6% 31%</p>
6	F	161	<div style="display: flex; align-items: center;"> <div style="width: 53%; height: 10px; background-color: red; margin-right: 5px;"></div> <div style="width: 12%; height: 10px; background-color: green; margin-right: 5px;"></div> <div style="width: 1%; height: 10px; background-color: yellow; margin-right: 5px;"></div> <div style="width: 34%; height: 10px; background-color: grey; margin-right: 5px;"></div> </div> <p style="margin-left: 25px;">53% 65% 31%</p>

Continued on next page...

Continued from previous page...

Mol	Chain	Length	Quality of chain
6	M	161	<p>48% 63% 9% 29%</p>
7	G	125	<p>35% 92% 7%</p>
7	N	125	<p>23% 93% 6%</p>
8	H	124	<p>70% 86% 10%</p>
8	O	124	<p>22% 94%</p>
9	I	99	<p>85% 81% 15%</p>
9	P	99	<p>68% 75% 10% 15%</p>
10	J	91	<p>90% 95%</p>
10	Q	91	<p>67% 96%</p>
11	R	476	<p>21% 78%</p>

2 Entry composition i

There are 15 unique types of molecules in this entry. The entry contains 95193 atoms, of which 47611 are hydrogens and 0 are deuteriums.

In the tables below, the AltConf column contains the number of residues with at least one atom in alternate conformation and the Trace column contains the number of residues modelled with at most 2 atoms.

- Molecule 1 is a protein called Serine/threonine-protein kinase mTOR.

Mol	Chain	Residues	Atoms					AltConf	Trace	
			Total	C	H	N	O			S
1	A	2188	35404	11226	17817	3080	3164	117	0	0

- Molecule 2 is a protein called Target of rapamycin complex subunit LST8.

Mol	Chain	Residues	Atoms					AltConf	Trace	
			Total	C	H	N	O			S
2	B	317	4797	1526	2341	436	476	18	0	0

- Molecule 3 is a protein called Regulatory-associated protein of mTOR.

Mol	Chain	Residues	Atoms					AltConf	Trace	
			Total	C	H	N	O			S
3	C	1133	18025	5757	9002	1568	1638	60	0	0

- Molecule 4 is a protein called Ras-related GTP-binding protein A.

Mol	Chain	Residues	Atoms					AltConf	Trace	
			Total	C	H	N	O			S
4	D	298	4882	1553	2438	427	447	17	0	0
4	K	298	4889	1554	2443	427	448	17	0	0

There are 2 discrepancies between the modelled and reference sequences:

Chain	Residue	Modelled	Actual	Comment	Reference
D	66	LEU	GLN	conflict	UNP Q7L523
K	66	LEU	GLN	conflict	UNP Q7L523

- Molecule 5 is a protein called Ras-related GTP-binding protein C.

Mol	Chain	Residues	Atoms					AltConf	Trace	
			Total	C	H	N	O			S
5	E	281	4523	1459	2258	370	424	12	0	0
5	L	277	4446	1430	2220	365	419	12	0	0

There are 2 discrepancies between the modelled and reference sequences:

Chain	Residue	Modelled	Actual	Comment	Reference
E	75	ASN	SER	engineered mutation	UNP Q9HB90
L	75	ASN	SER	engineered mutation	UNP Q9HB90

- Molecule 6 is a protein called Ragulator complex protein LAMTOR1.

Mol	Chain	Residues	Atoms					AltConf	Trace	
			Total	C	H	N	O			S
6	F	111	1738	547	870	150	170	1	0	0
6	M	115	1791	562	896	155	176	2	0	0

- Molecule 7 is a protein called Ragulator complex protein LAMTOR2.

Mol	Chain	Residues	Atoms					AltConf	Trace	
			Total	C	H	N	O			S
7	G	124	1888	590	950	161	180	7	0	0
7	N	124	1888	590	950	161	180	7	0	0

- Molecule 8 is a protein called Ragulator complex protein LAMTOR3.

Mol	Chain	Residues	Atoms					AltConf	Trace	
			Total	C	H	N	O			S
8	H	120	1892	601	958	157	175	1	0	0
8	O	120	1892	601	958	157	175	1	0	0

- Molecule 9 is a protein called Ragulator complex protein LAMTOR4.

Mol	Chain	Residues	Atoms					AltConf	Trace	
			Total	C	H	N	O			S
9	I	84	1294	404	652	115	122	1	0	0
9	P	84	1294	404	652	115	122	1	0	0

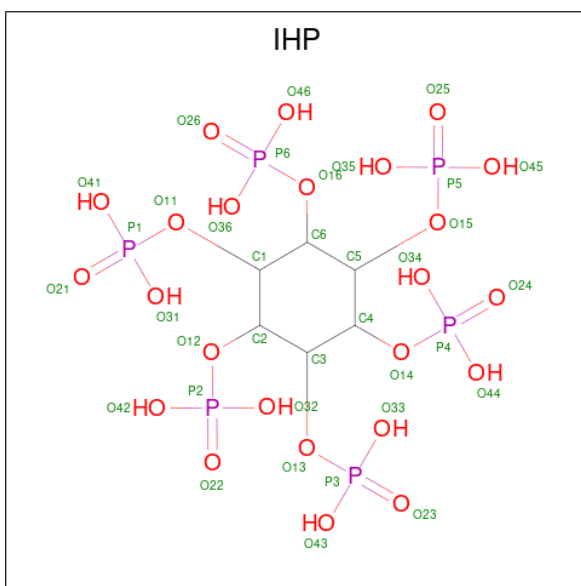
- Molecule 10 is a protein called Ragulator complex protein LAMTOR5.

Mol	Chain	Residues	Atoms					AltConf	Trace	
			Total	C	H	N	O			S
10	J	89	1311	400	656	113	135	7	0	0
10	Q	89	1311	400	656	113	135	7	0	0

- Molecule 11 is a protein called Transcription factor EB.

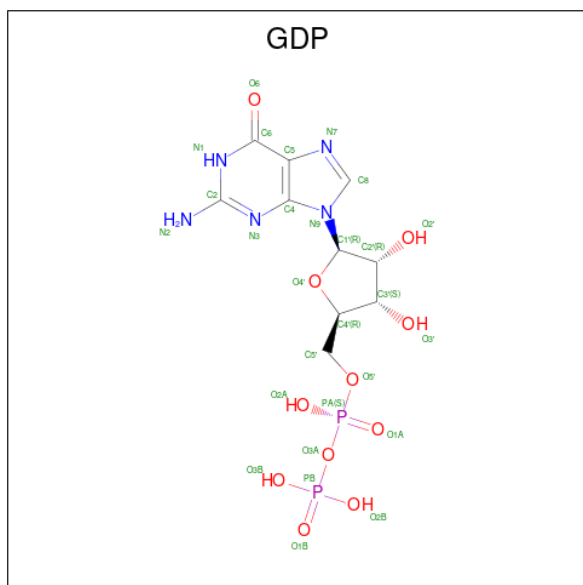
Mol	Chain	Residues	Atoms					AltConf	Trace	
			Total	C	H	N	O			S
11	R	107	1724	541	848	165	165	5	0	0

- Molecule 12 is INOSITOL HEXAKISPHOSPHATE (three-letter code: IHP) (formula: $C_6H_{18}O_{24}P_6$).



Mol	Chain	Residues	Atoms					AltConf
			Total	C	H	O	P	
12	A	1	42	6	6	24	6	0

- Molecule 13 is GUANOSINE-5'-TRIPHOSPHATE (three-letter code: GTP) (formula: $C_{10}H_{16}N_5O_{14}P_3$).

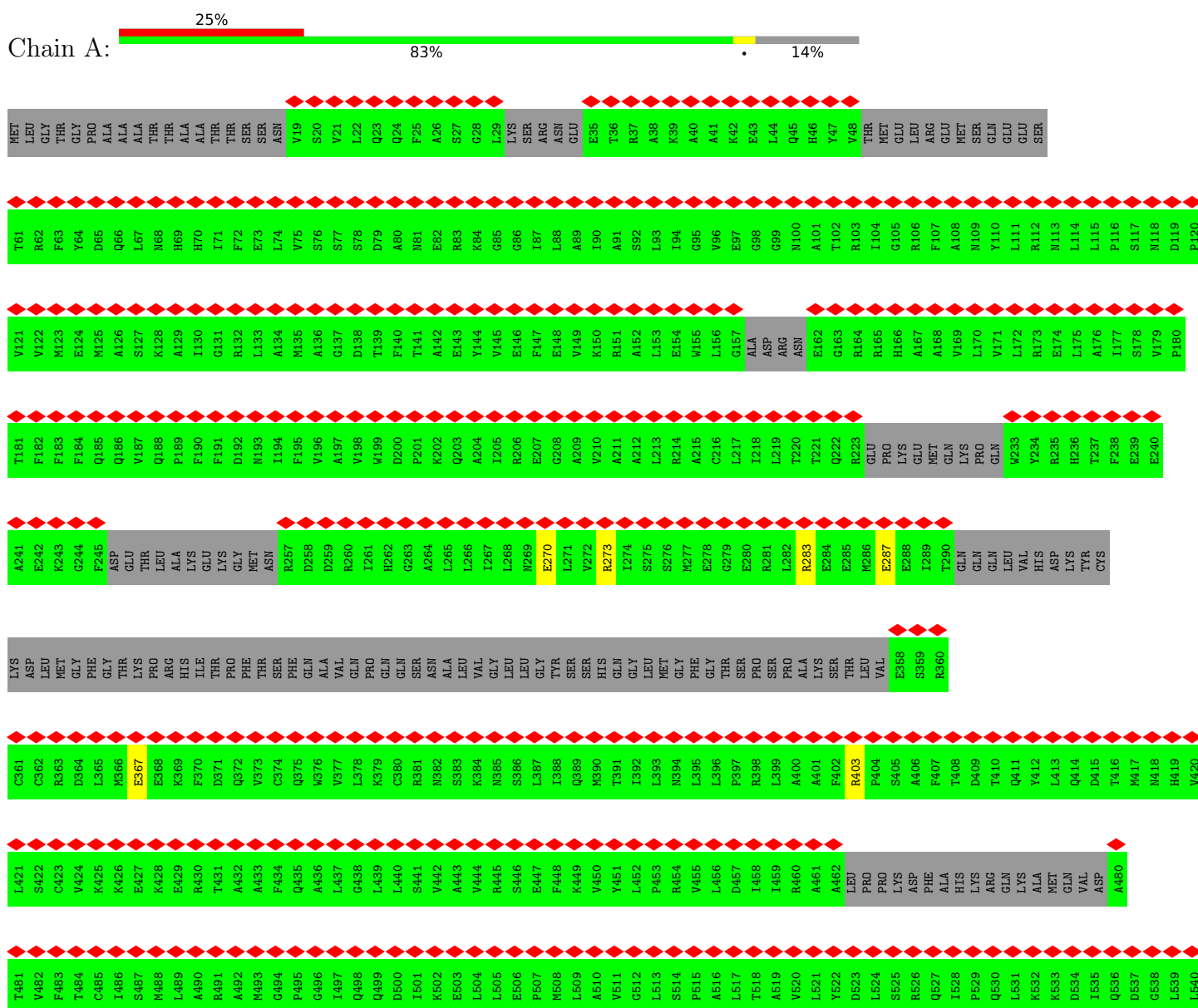


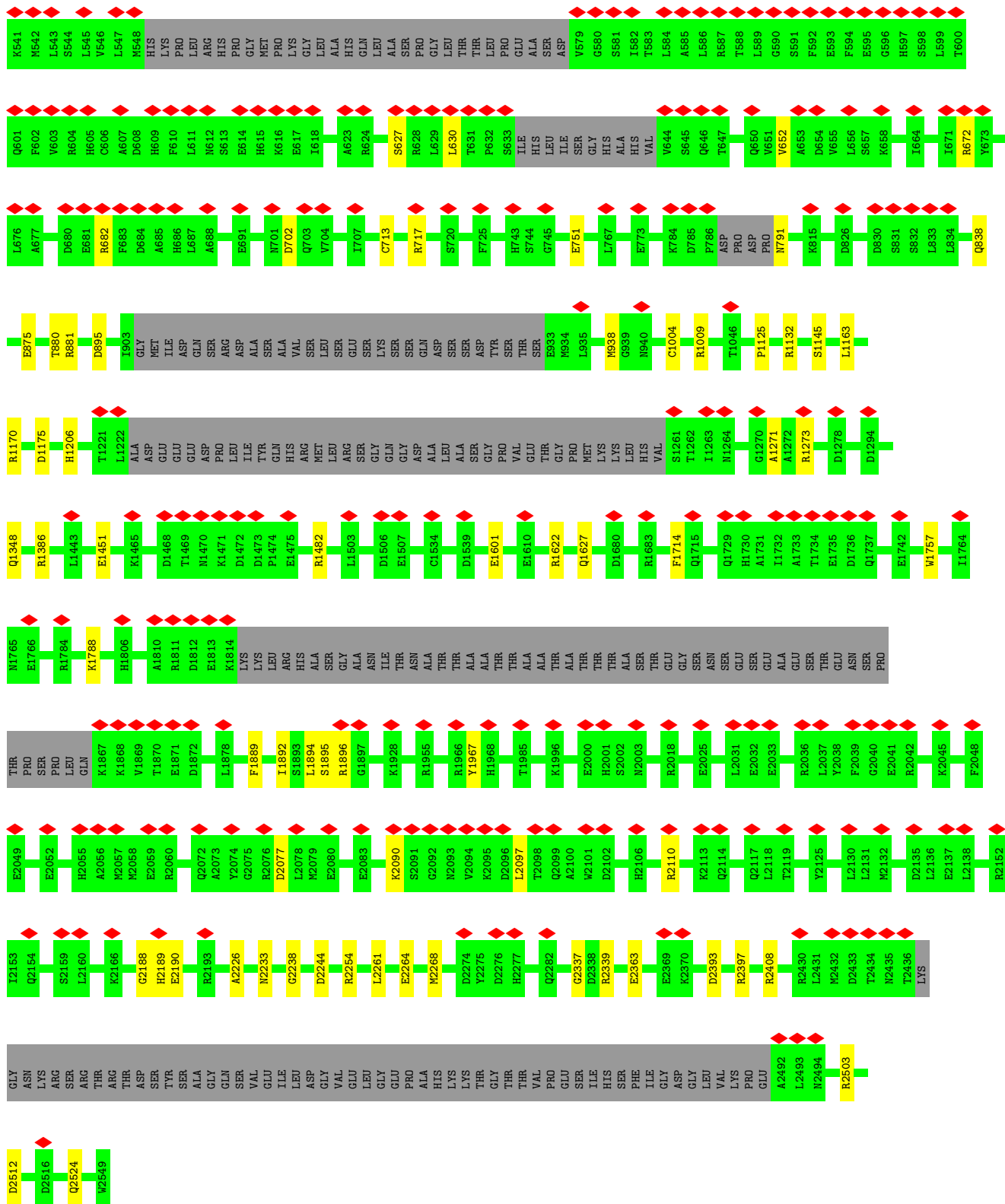
Mol	Chain	Residues	Atoms					AltConf	
			Total	C	H	N	O		P
15	E	1	38	10	10	5	11	2	0
15	L	1	38	10	10	5	11	2	0

3 Residue-property plots

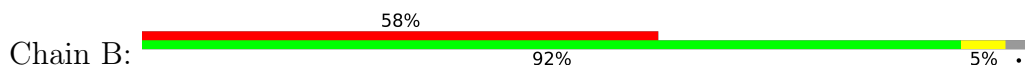
These plots are drawn for all protein, RNA, DNA and oligosaccharide chains in the entry. The first graphic for a chain summarises the proportions of the various outlier classes displayed in the second graphic. The second graphic shows the sequence view annotated by issues in geometry and atom inclusion in map density. Residues are color-coded according to the number of geometric quality criteria for which they contain at least one outlier: green = 0, yellow = 1, orange = 2 and red = 3 or more. A red diamond above a residue indicates a poor fit to the EM map for this residue (all-atom inclusion < 40%). Stretches of 2 or more consecutive residues without any outlier are shown as a green connector. Residues present in the sample, but not in the model, are shown in grey.

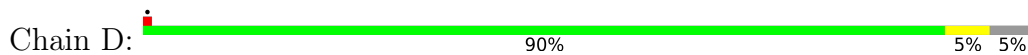
- Molecule 1: Serine/threonine-protein kinase mTOR



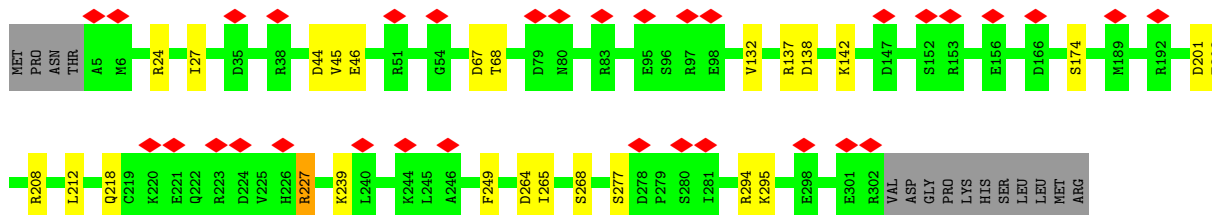
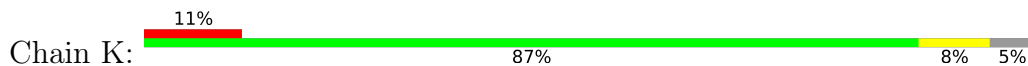


• Molecule 2: Target of rapamycin complex subunit LST8

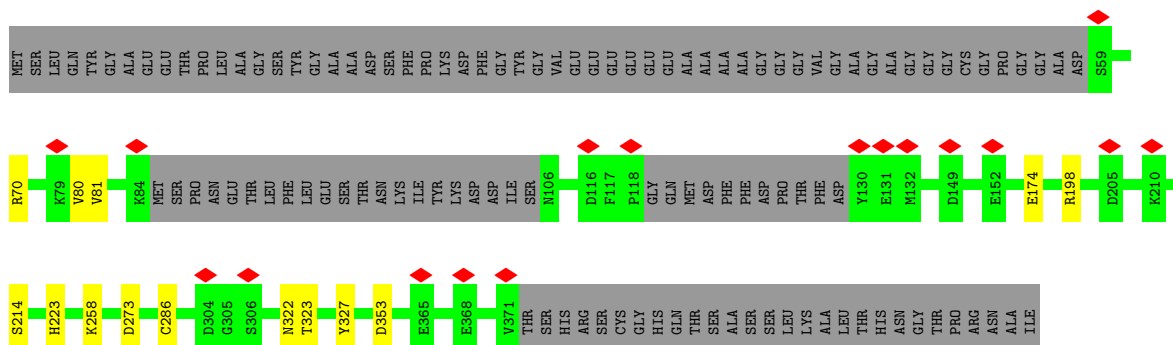




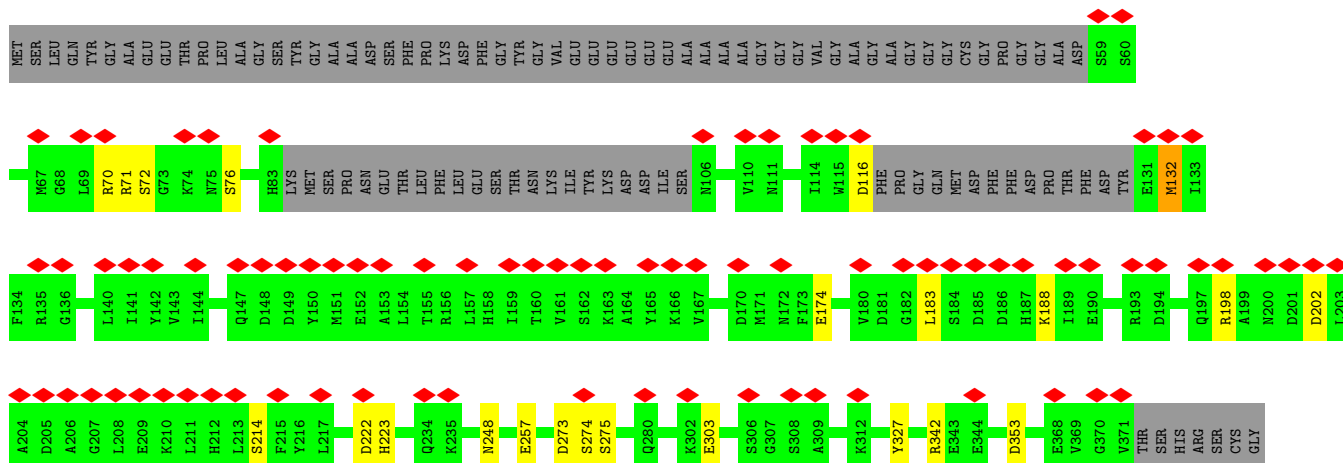
• Molecule 4: Ras-related GTP-binding protein A



• Molecule 5: Ras-related GTP-binding protein C

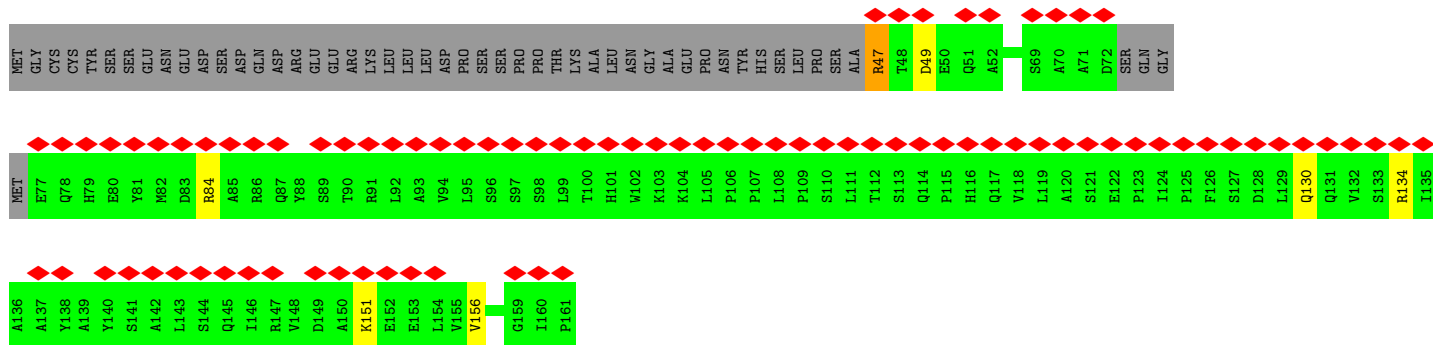


• Molecule 5: Ras-related GTP-binding protein C

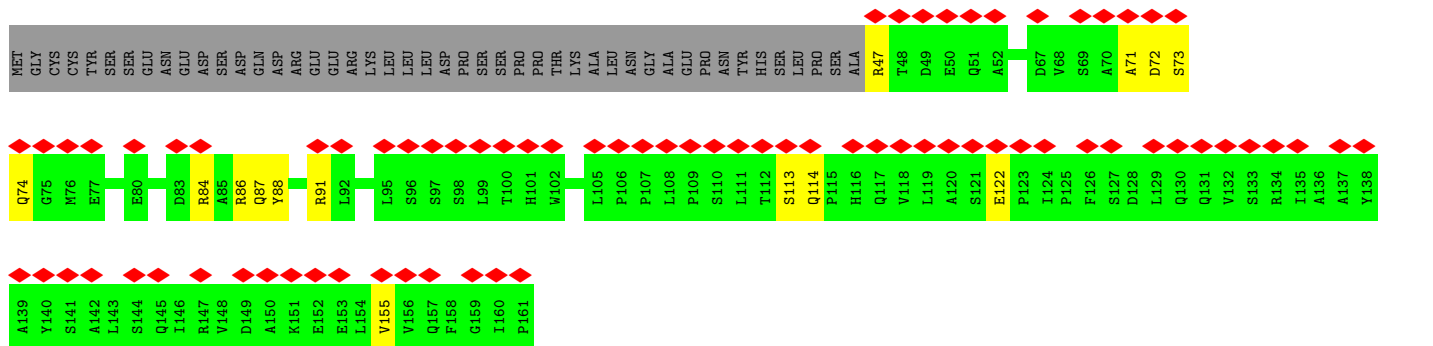


HIS
GLN
THR
SER
SER
ALA
TYR
SER
SER
SER
LEU
LYS
ALA
ASP
THR
THR
HIS
HIS
ASN
GLY
THR
PRO
PRO
ARG
ARG
ALA
ILE

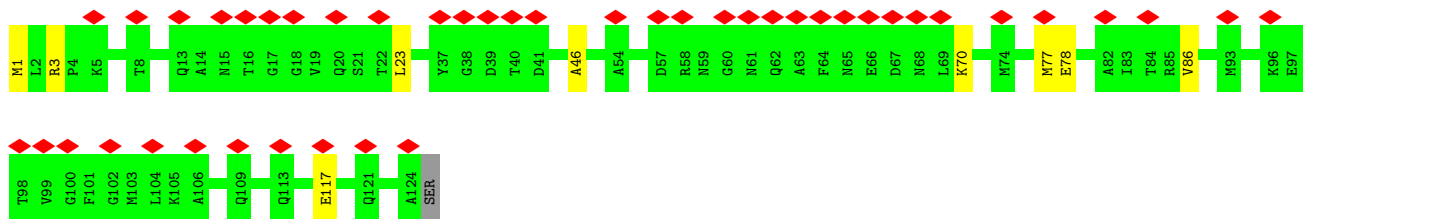
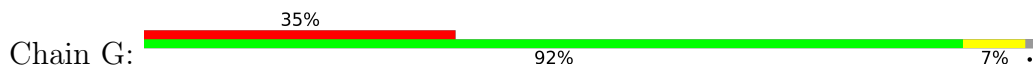
• Molecule 6: Ragulator complex protein LAMTOR1



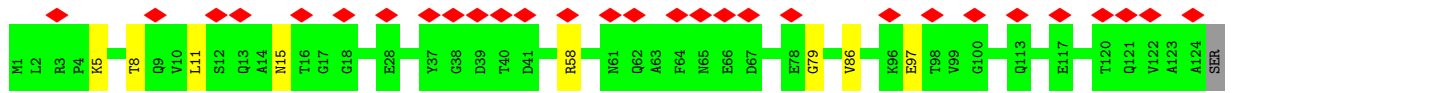
• Molecule 6: Ragulator complex protein LAMTOR1



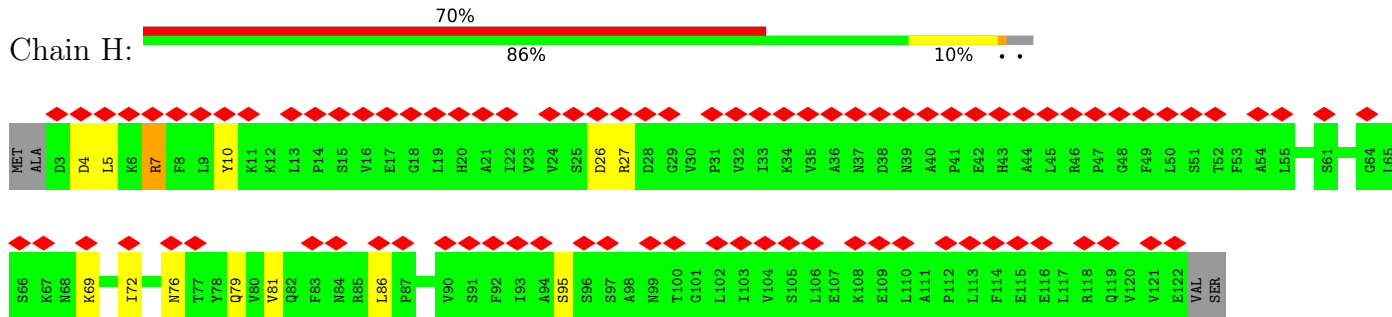
• Molecule 7: Ragulator complex protein LAMTOR2



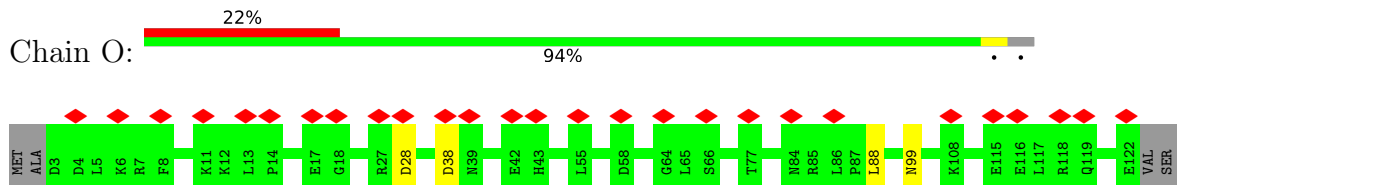
• Molecule 7: Ragulator complex protein LAMTOR2



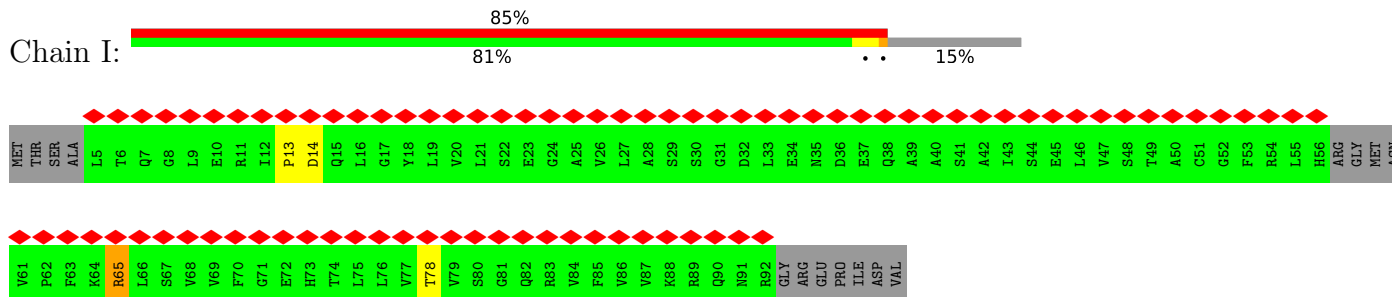
• Molecule 8: Regulator complex protein LAMTOR3



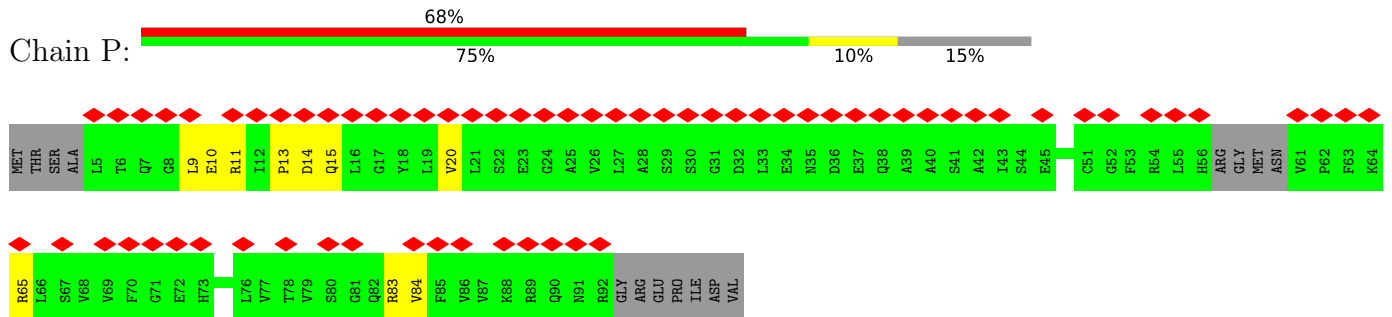
• Molecule 8: Regulator complex protein LAMTOR3



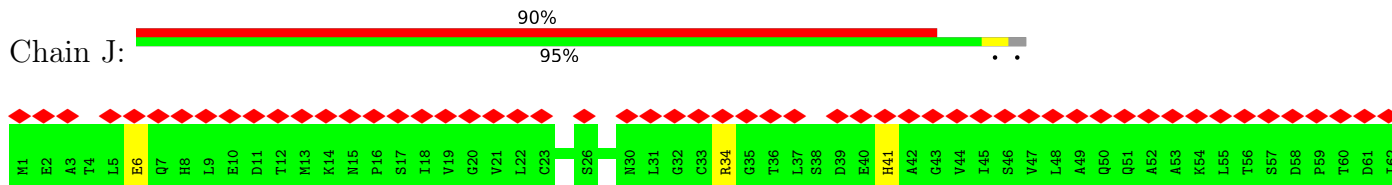
• Molecule 9: Regulator complex protein LAMTOR4

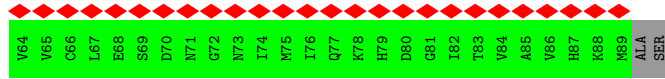


• Molecule 9: Regulator complex protein LAMTOR4

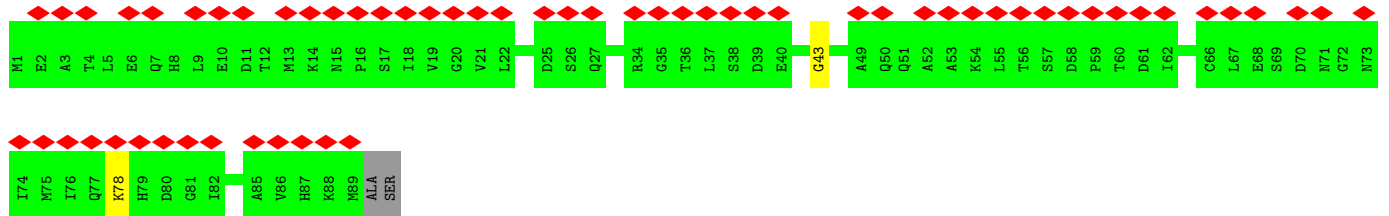


• Molecule 10: Regulator complex protein LAMTOR5

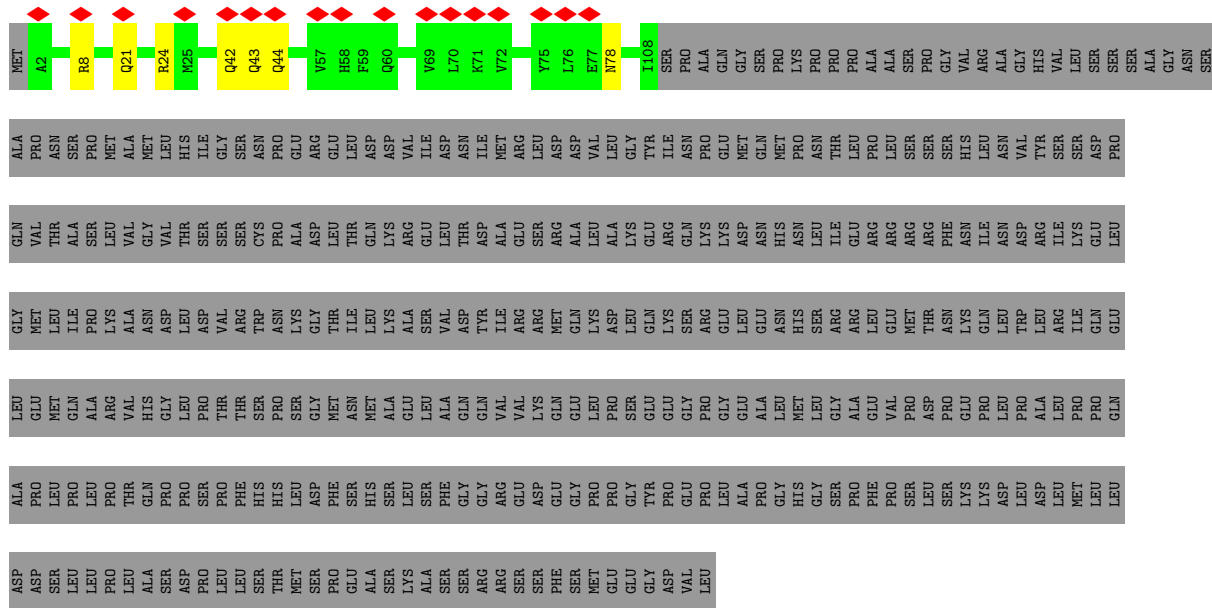




● Molecule 10: Regulator complex protein LAMTOR5



● Molecule 11: Transcription factor EB



4 Experimental information

Property	Value	Source
EM reconstruction method	SINGLE PARTICLE	Depositor
Imposed symmetry	POINT, Not provided	
Number of particles used	192332	Depositor
Resolution determination method	FSC 0.143 CUT-OFF	Depositor
CTF correction method	PHASE FLIPPING AND AMPLITUDE CORRECTION	Depositor
Microscope	FEI TITAN KRIOS	Depositor
Voltage (kV)	300	Depositor
Electron dose ($e^-/\text{\AA}^2$)	50	Depositor
Minimum defocus (nm)	800	Depositor
Maximum defocus (nm)	2200	Depositor
Magnification	Not provided	
Image detector	GATAN K3 BIOQUANTUM (6k x 4k)	Depositor
Maximum map value	2.985	Depositor
Minimum map value	-1.752	Depositor
Average map value	0.001	Depositor
Map value standard deviation	0.030	Depositor
Recommended contour level	0.4	Depositor
Map size (Å)	617.39996, 617.39996, 617.39996	wwPDB
Map dimensions	588, 588, 588	wwPDB
Map angles (°)	90.0, 90.0, 90.0	wwPDB
Pixel spacing (Å)	1.05, 1.05, 1.05	Depositor

5 Model quality

5.1 Standard geometry

Bond lengths and bond angles in the following residue types are not validated in this section: IHP, GTP, GDP, MG

The Z score for a bond length (or angle) is the number of standard deviations the observed value is removed from the expected value. A bond length (or angle) with $|Z| > 5$ is considered an outlier worth inspection. RMSZ is the root-mean-square of all Z scores of the bond lengths (or angles).

Mol	Chain	Bond lengths		Bond angles	
		RMSZ	# Z >5	RMSZ	# Z >5
1	A	0.28	0/17941	0.60	2/24276 (0.0%)
2	B	0.26	0/2514	0.57	0/3426
3	C	0.29	0/9242	0.61	1/12573 (0.0%)
4	D	0.29	0/2489	0.64	0/3350
4	K	0.30	0/2491	0.67	1/3353 (0.0%)
5	E	0.31	0/2309	0.62	0/3114
5	L	0.30	0/2267	0.61	0/3057
6	F	0.28	0/884	0.64	0/1201
6	M	0.29	0/912	0.63	0/1239
7	G	0.30	0/949	0.70	0/1285
7	N	0.32	0/949	0.70	0/1285
8	H	0.29	0/951	0.65	0/1290
8	O	0.30	0/951	0.69	2/1290 (0.2%)
9	I	0.27	0/649	0.63	0/876
9	P	0.27	0/649	0.67	0/876
10	J	0.27	0/661	0.57	0/896
10	Q	0.28	0/661	0.64	0/896
11	R	0.30	0/896	0.65	0/1211
All	All	0.29	0/48365	0.62	6/65494 (0.0%)

Chiral center outliers are detected by calculating the chiral volume of a chiral center and verifying if the center is modelled as a planar moiety or with the opposite hand. A planarity outlier is detected by checking planarity of atoms in a peptide group, atoms in a mainchain group or atoms of a sidechain that are expected to be planar.

Mol	Chain	#Chirality outliers	#Planarity outliers
3	C	0	2
4	D	0	1
9	I	0	1
9	P	0	1
All	All	0	5

There are no bond length outliers.

All (6) bond angle outliers are listed below:

Mol	Chain	Res	Type	Atoms	Z	Observed($^{\circ}$)	Ideal($^{\circ}$)
8	O	88	LEU	CA-CB-CG	5.49	127.92	115.30
8	O	88	LEU	CB-CG-CD2	5.34	120.08	111.00
1	A	1967	TYR	CA-CB-CG	5.18	123.25	113.40
3	C	796	LEU	CA-CB-CG	5.07	126.97	115.30
1	A	2097	LEU	CA-CB-CG	5.06	126.94	115.30
4	K	44	ASP	CB-CG-OD1	5.05	122.85	118.30

There are no chirality outliers.

All (5) planarity outliers are listed below:

Mol	Chain	Res	Type	Group
3	C	118	ARG	Sidechain
3	C	188	SER	Peptide
4	D	227	ARG	Sidechain
9	I	65	ARG	Sidechain
9	P	65	ARG	Sidechain

5.2 Too-close contacts [i](#)

In the following table, the Non-H and H(model) columns list the number of non-hydrogen atoms and hydrogen atoms in the chain respectively. The H(added) column lists the number of hydrogen atoms added and optimized by MolProbity. The Clashes column lists the number of clashes within the asymmetric unit, whereas Symm-Clashes lists symmetry-related clashes.

Mol	Chain	Non-H	H(model)	H(added)	Clashes	Symm-Clashes
1	A	17587	17817	17819	38	0
2	B	2456	2341	2341	9	0
3	C	9023	9002	9000	28	0
4	D	2444	2438	2438	8	0
4	K	2446	2443	2443	13	0
5	E	2265	2258	2258	9	0
5	L	2226	2220	2220	15	0
6	F	868	870	870	4	0
6	M	895	896	896	11	0
7	G	938	950	950	7	0
7	N	938	950	950	4	0
8	H	934	958	958	9	0
8	O	934	958	958	3	0
9	I	642	652	652	2	0

Continued on next page...

Continued from previous page...

Mol	Chain	Non-H	H(model)	H(added)	Clashes	Symm-Clashes
9	P	642	652	652	5	0
10	J	655	656	656	2	0
10	Q	655	656	656	1	0
11	R	876	848	847	4	0
12	A	36	6	6	1	0
13	D	32	10	12	0	0
13	K	32	10	12	0	0
14	D	1	0	0	0	0
14	K	1	0	0	0	0
15	E	28	10	12	0	0
15	L	28	10	12	3	0
All	All	47582	47611	47618	160	0

The all-atom clashscore is defined as the number of clashes found per 1000 atoms (including hydrogen atoms). The all-atom clashscore for this structure is 2.

All (160) close contacts within the same asymmetric unit are listed below, sorted by their clash magnitude.

Atom-1	Atom-2	Interatomic distance (Å)	Clash overlap (Å)
5:E:327:TYR:OH	5:E:353:ASP:OD1	1.97	0.82
3:C:1207:TYR:OH	3:C:1243:MET:O	2.00	0.79
5:L:198:ARG:NH1	5:L:202:ASP:OD2	2.17	0.77
3:C:790:ALA:O	3:C:794:SER:OG	2.02	0.77
10:J:6:GLU:OE1	10:J:34:ARG:NH2	2.20	0.75
6:F:84:ARG:NH2	8:H:26:ASP:OD2	2.20	0.74
1:A:270:GLU:OE1	1:A:273:ARG:NH1	2.22	0.71
8:H:27:ARG:NH2	8:H:86:LEU:O	2.23	0.71
6:M:84:ARG:NH2	6:M:88:TYR:OH	2.24	0.71
1:A:1163:LEU:O	1:A:1170:ARG:NH1	2.24	0.70
1:A:875:GLU:O	1:A:881:ARG:NH2	2.25	0.70
4:K:265:ILE:O	4:K:294:ARG:NH2	2.26	0.69
1:A:367:GLU:OE1	1:A:403:ARG:NH2	2.25	0.69
3:C:138:ARG:NH1	3:C:141:ALA:O	2.25	0.68
9:P:20:VAL:O	9:P:83:ARG:NH2	2.27	0.66
3:C:1058:ASP:OD1	3:C:1059:TYR:N	2.28	0.66
5:L:71:ARG:NH2	15:L:401:GDP:O4'	2.29	0.65
3:C:72:PRO:HG2	3:C:75:VAL:HG12	1.79	0.65
5:E:258:LYS:NZ	5:E:273:ASP:OD1	2.27	0.63
3:C:1145:ARG:NH2	3:C:1165:ALA:O	2.32	0.62
7:G:70:LYS:NZ	8:H:76:ASN:OD1	2.30	0.62
3:C:1197:MET:SD	3:C:1198:ALA:N	2.71	0.61

Continued on next page...

Continued from previous page...

Atom-1	Atom-2	Interatomic distance (Å)	Clash overlap (Å)
9:P:9:LEU:O	9:P:11:ARG:NH1	2.32	0.61
4:K:24:ARG:NH2	4:K:46:GLU:OE1	2.33	0.61
5:L:70:ARG:NH2	5:L:116:ASP:OD1	2.34	0.60
1:A:2226:ALA:O	1:A:2238:GLY:N	2.34	0.59
3:C:1260:ASP:OD2	3:C:1309:PHE:N	2.36	0.59
1:A:2337:GLY:O	1:A:2339:ARG:NH1	2.36	0.59
5:E:322:ASN:O	5:E:323:THR:OG1	2.20	0.58
9:P:83:ARG:NH2	9:P:84:VAL:O	2.36	0.58
1:A:1601:GLU:OE1	1:A:1622:ARG:NH1	2.35	0.58
1:A:2363:GLU:OE2	1:A:2503:ARG:NH1	2.36	0.58
5:L:183:LEU:O	5:L:188:LYS:NZ	2.37	0.58
4:K:138:ASP:OD1	4:K:142:LYS:NZ	2.30	0.57
8:O:99:ASN:ND2	10:Q:43:GLY:O	2.37	0.57
5:L:327:TYR:OH	5:L:353:ASP:OD1	2.21	0.57
3:C:983:GLN:NE2	3:C:987:GLU:OE2	2.36	0.57
10:J:41:HIS:O	10:J:41:HIS:ND1	2.37	0.57
1:A:1451:GLU:OE2	1:A:1482:ARG:NE	2.36	0.57
3:C:431:GLU:OE1	3:C:431:GLU:N	2.38	0.57
5:L:72:SER:N	15:L:401:GDP:O2B	2.38	0.56
1:A:895:ASP:OD1	1:A:1627:GLN:NE2	2.38	0.56
2:B:123:ARG:NH2	2:B:160:ASP:OD2	2.37	0.56
3:C:331:ASP:OD1	3:C:332:LEU:N	2.39	0.55
4:K:264:ASP:OD1	4:K:265:ILE:N	2.39	0.55
3:C:395:THR:O	3:C:400:GLY:N	2.38	0.55
3:C:200:GLY:N	3:C:246:CYS:O	2.37	0.54
8:H:4:ASP:OD1	8:H:5:LEU:N	2.39	0.54
6:F:47:ARG:NE	6:F:49:ASP:OD2	2.40	0.54
4:K:208:ARG:NE	4:K:268:SER:O	2.40	0.54
5:E:70:ARG:NH2	8:O:38:ASP:OD1	2.37	0.54
6:M:87:GLN:OE1	6:M:91:ARG:NH2	2.41	0.54
3:C:1283:SER:OG	3:C:1284:GLY:N	2.41	0.53
1:A:2077:ASP:OD2	1:A:2110:ARG:NH1	2.40	0.53
1:A:2188:GLY:O	1:A:2189:HIS:ND1	2.41	0.53
7:N:5:LYS:O	7:N:8:THR:OG1	2.24	0.52
6:F:156:VAL:O	7:G:1:MET:N	2.42	0.52
1:A:1145:SER:O	3:C:358:ARG:NH2	2.41	0.52
7:G:78:GLU:N	7:G:78:GLU:OE1	2.43	0.51
11:R:21:GLN:OE1	11:R:24:ARG:NH2	2.44	0.51
9:I:65:ARG:NH1	9:I:78:THR:OG1	2.42	0.51
2:B:44:GLN:NE2	2:B:87:ASN:OD1	2.45	0.50
6:M:73:SER:O	6:M:74:GLN:NE2	2.44	0.50

Continued on next page...

Continued from previous page...

Atom-1	Atom-2	Interatomic distance (Å)	Clash overlap (Å)
7:N:79:GLY:N	7:N:97:GLU:OE2	2.44	0.50
1:A:283:ARG:NH1	1:A:287:GLU:OE2	2.45	0.50
6:M:71:ALA:O	7:N:58:ARG:NH2	2.45	0.50
2:B:147:ASP:OD2	2:B:149:SER:OG	2.28	0.50
4:K:201:ASP:OD2	4:K:277:SER:OG	2.27	0.50
1:A:1125:PRO:O	1:A:1132:ARG:NH2	2.45	0.49
5:L:71:ARG:NE	5:L:71:ARG:O	2.45	0.49
5:L:248:ASN:ND2	5:L:274:SER:OG	2.46	0.49
1:A:630:LEU:HD11	1:A:652:VAL:HG22	1.94	0.49
5:L:132:MET:N	5:L:132:MET:SD	2.86	0.48
5:L:257:GLU:OE1	5:L:342:ARG:NH1	2.46	0.48
8:H:7:ARG:HA	8:H:10:TYR:HB2	1.96	0.48
9:P:10:GLU:OE2	9:P:15:GLN:NE2	2.47	0.48
1:A:1894:LEU:O	1:A:1896:ARG:NH2	2.47	0.48
2:B:239:SER:OG	2:B:240:ALA:N	2.47	0.47
3:C:628:GLY:O	3:C:673:GLN:NE2	2.46	0.47
1:A:751:GLU:OE2	1:A:791:ASN:ND2	2.46	0.47
7:G:77:MET:SD	8:H:69:LYS:NZ	2.68	0.47
1:A:2254:ARG:NH1	1:A:2261:LEU:O	2.46	0.47
2:B:43:SER:OG	2:B:44:GLN:N	2.47	0.47
5:L:76:SER:HB3	15:L:401:GDP:H5''	1.97	0.47
1:A:1788:LYS:NZ	12:A:2601:IHP:O31	2.48	0.46
6:M:84:ARG:NH1	8:O:28:ASP:OD2	2.47	0.46
9:P:14:ASP:N	9:P:14:ASP:OD1	2.49	0.46
3:C:592:ARG:NE	3:C:626:PHE:O	2.39	0.46
1:A:627:SER:O	1:A:682:ARG:NH1	2.48	0.46
4:K:132:VAL:O	4:K:137:ARG:NE	2.48	0.46
6:M:122:GLU:OE1	6:M:122:GLU:N	2.43	0.46
1:A:1348:GLN:O	1:A:1386:ARG:NH2	2.47	0.46
3:C:932:LYS:O	4:D:37:ARG:NH2	2.48	0.46
8:H:4:ASP:O	8:H:7:ARG:NH1	2.48	0.46
9:I:14:ASP:OD1	9:I:14:ASP:N	2.48	0.46
5:E:223:HIS:NE2	5:E:286:CYS:SG	2.82	0.46
4:K:218:GLN:OE1	4:K:227:ARG:NH2	2.49	0.46
1:A:2244:ASP:N	1:A:2244:ASP:OD1	2.47	0.45
3:C:1151:ASP:O	3:C:1155:GLU:N	2.48	0.45
3:C:522:LEU:O	3:C:565:GLN:NE2	2.48	0.45
4:D:44:ASP:O	4:D:73:TYR:OH	2.34	0.45
1:A:2408:ARG:NH2	1:A:2524:GLN:OE1	2.50	0.45
3:C:40:GLU:O	3:C:965:ARG:NH2	2.50	0.45
1:A:2393:ASP:OD1	1:A:2397:ARG:NH1	2.50	0.45

Continued on next page...

Continued from previous page...

Atom-1	Atom-2	Interatomic distance (Å)	Clash overlap (Å)
3:C:168:ASN:OD1	3:C:171:TYR:N	2.50	0.44
5:E:174:GLU:OE1	5:E:214:SER:OG	2.29	0.44
4:K:27:ILE:HG23	4:K:212:LEU:HD21	1.99	0.44
1:A:2190:GLU:N	1:A:2233:ASN:O	2.44	0.44
4:D:202:GLU:OE2	4:D:227:ARG:NH2	2.46	0.44
4:K:67:ASP:OD1	4:K:68:THR:N	2.51	0.44
4:K:174:SER:N	4:K:212:LEU:HD12	2.32	0.44
1:A:713:CYS:SG	1:A:717:ARG:NH2	2.91	0.44
1:A:1004:CYS:O	1:A:1009:ARG:NH2	2.50	0.44
1:A:938:MET:SD	1:A:938:MET:N	2.91	0.44
5:L:273:ASP:OD1	5:L:275:SER:OG	2.30	0.44
1:A:672:ARG:NH1	1:A:702:ASP:OD2	2.51	0.43
1:A:1271:ALA:O	1:A:1273:ARG:NE	2.49	0.43
7:G:23:LEU:HD13	7:G:46:ALA:HB2	1.99	0.43
6:M:155:VAL:HG12	6:M:155:VAL:O	2.18	0.43
3:C:1313:TRP:HB3	3:C:1315:HIS:ND1	2.34	0.43
1:A:1889:PHE:HA	1:A:1892:ILE:HG22	1.99	0.43
6:F:130:GLN:OE1	6:F:134:ARG:NH1	2.51	0.43
6:M:113:SER:OG	6:M:114:GLN:OE1	2.31	0.43
4:D:149:ARG:O	4:D:153:ARG:NE	2.51	0.43
8:H:72:ILE:HG22	8:H:81:VAL:HG12	2.00	0.43
3:C:982:SER:O	3:C:985:ARG:N	2.52	0.43
5:E:70:ARG:HH11	5:E:70:ARG:HG3	1.84	0.43
4:D:199:GLU:OE2	7:G:3:ARG:NH2	2.53	0.42
1:A:1175:ASP:OD1	1:A:1206:HIS:NE2	2.50	0.42
7:G:117:GLU:OE1	7:G:117:GLU:N	2.45	0.42
8:H:79:GLN:NE2	8:H:95:SER:O	2.49	0.42
3:C:592:ARG:NH2	3:C:641:ASP:OD1	2.52	0.42
4:D:208:ARG:NE	4:D:268:SER:O	2.53	0.42
4:K:202:GLU:OE2	4:K:227:ARG:NH1	2.50	0.42
11:R:78:ASN:OD1	11:R:78:ASN:N	2.53	0.42
3:C:1013:LEU:O	3:C:1288:ASN:ND2	2.49	0.42
2:B:11:ASP:O	2:B:54:ARG:NH2	2.47	0.41
2:B:179:ASP:OD2	2:B:183:SER:OG	2.33	0.41
1:A:838:GLN:OE1	1:A:880:THR:N	2.52	0.41
1:A:2264:GLU:O	1:A:2268:MET:HG3	2.20	0.41
3:C:1055:GLU:OE1	3:C:1055:GLU:N	2.54	0.41
5:L:222:ASP:OD1	5:L:223:HIS:N	2.53	0.41
11:R:8:ARG:HH11	11:R:8:ARG:HG3	1.85	0.41
6:M:72:ASP:OD2	6:M:72:ASP:N	2.52	0.41
1:A:1895:SER:O	1:A:1896:ARG:HG2	2.21	0.41

Continued on next page...

Continued from previous page...

Atom-1	Atom-2	Interatomic distance (Å)	Clash overlap (Å)
4:D:224:ASP:OD1	4:D:225:VAL:N	2.54	0.41
3:C:311:GLU:HG2	3:C:311:GLU:O	2.20	0.41
5:E:198:ARG:O	6:M:86:ARG:NH2	2.54	0.41
5:L:174:GLU:OE1	5:L:214:SER:OG	2.37	0.40
5:L:303:GLU:OE1	5:L:303:GLU:N	2.38	0.40
7:N:11:LEU:O	7:N:15:ASN:ND2	2.46	0.40
11:R:42:GLN:O	11:R:44:GLN:N	2.54	0.40
1:A:1714:PHE:HE1	1:A:1757:TRP:HB3	1.87	0.40
1:A:2512:ASP:N	1:A:2512:ASP:OD1	2.54	0.40
5:E:80:VAL:HG13	5:E:81:VAL:HG13	2.04	0.40
6:M:114:GLN:OE1	6:M:114:GLN:N	2.54	0.40
2:B:89:ALA:N	2:B:103:GLY:O	2.48	0.40
4:D:78:ARG:NH2	4:D:115:GLN:OE1	2.51	0.40
4:K:239:LYS:HZ1	4:K:249:PHE:HE1	1.70	0.40
2:B:46:ASN:ND2	2:B:88:ILE:O	2.55	0.40

There are no symmetry-related clashes.

5.3 Torsion angles [i](#)

5.3.1 Protein backbone [i](#)

In the following table, the Percentiles column shows the percent Ramachandran outliers of the chain as a percentile score with respect to all PDB entries followed by that with respect to all EM entries.

The Analysed column shows the number of residues for which the backbone conformation was analysed, and the total number of residues.

Mol	Chain	Analysed	Favoured	Allowed	Outliers	Percentiles	
1	A	2158/2549 (85%)	2108 (98%)	50 (2%)	0	100	100
2	B	315/326 (97%)	297 (94%)	18 (6%)	0	100	100
3	C	1123/1335 (84%)	1050 (94%)	73 (6%)	0	100	100
4	D	296/313 (95%)	283 (96%)	13 (4%)	0	100	100
4	K	296/313 (95%)	273 (92%)	22 (7%)	1 (0%)	41	74
5	E	275/399 (69%)	261 (95%)	14 (5%)	0	100	100
5	L	271/399 (68%)	258 (95%)	13 (5%)	0	100	100
6	F	107/161 (66%)	101 (94%)	6 (6%)	0	100	100

Continued on next page...

Continued from previous page...

Mol	Chain	Analysed	Favoured	Allowed	Outliers	Percentiles	
6	M	113/161 (70%)	105 (93%)	8 (7%)	0	100	100
7	G	122/125 (98%)	118 (97%)	3 (2%)	1 (1%)	19	58
7	N	122/125 (98%)	115 (94%)	6 (5%)	1 (1%)	19	58
8	H	118/124 (95%)	111 (94%)	7 (6%)	0	100	100
8	O	118/124 (95%)	116 (98%)	2 (2%)	0	100	100
9	I	80/99 (81%)	69 (86%)	10 (12%)	1 (1%)	12	47
9	P	80/99 (81%)	69 (86%)	10 (12%)	1 (1%)	12	47
10	J	87/91 (96%)	79 (91%)	8 (9%)	0	100	100
10	Q	87/91 (96%)	80 (92%)	7 (8%)	0	100	100
11	R	105/476 (22%)	99 (94%)	5 (5%)	1 (1%)	15	54
All	All	5873/7310 (80%)	5592 (95%)	275 (5%)	6 (0%)	54	83

All (6) Ramachandran outliers are listed below:

Mol	Chain	Res	Type
7	G	86	VAL
7	N	86	VAL
11	R	43	GLN
9	P	13	PRO
4	K	45	VAL
9	I	13	PRO

5.3.2 Protein sidechains [i](#)

In the following table, the Percentiles column shows the percent sidechain outliers of the chain as a percentile score with respect to all PDB entries followed by that with respect to all EM entries.

The Analysed column shows the number of residues for which the sidechain conformation was analysed, and the total number of residues.

Mol	Chain	Analysed	Rotameric	Outliers	Percentiles	
1	A	1919/2220 (86%)	1918 (100%)	1 (0%)	93	98
2	B	269/276 (98%)	269 (100%)	0	100	100
3	C	1000/1163 (86%)	997 (100%)	3 (0%)	92	96
4	D	271/287 (94%)	268 (99%)	3 (1%)	73	88
4	K	272/287 (95%)	270 (99%)	2 (1%)	84	94

Continued on next page...

Continued from previous page...

Mol	Chain	Analysed	Rotameric	Outliers	Percentiles	
5	E	255/340 (75%)	255 (100%)	0	100	100
5	L	251/340 (74%)	250 (100%)	1 (0%)	91	95
6	F	97/141 (69%)	95 (98%)	2 (2%)	53	79
6	M	100/141 (71%)	99 (99%)	1 (1%)	76	90
7	G	97/98 (99%)	97 (100%)	0	100	100
7	N	97/98 (99%)	97 (100%)	0	100	100
8	H	105/108 (97%)	104 (99%)	1 (1%)	76	90
8	O	105/108 (97%)	105 (100%)	0	100	100
9	I	71/83 (86%)	71 (100%)	0	100	100
9	P	71/83 (86%)	71 (100%)	0	100	100
10	J	76/77 (99%)	76 (100%)	0	100	100
10	Q	76/77 (99%)	75 (99%)	1 (1%)	69	87
11	R	96/419 (23%)	96 (100%)	0	100	100
All	All	5228/6346 (82%)	5213 (100%)	15 (0%)	92	96

All (15) residues with a non-rotameric sidechain are listed below:

Mol	Chain	Res	Type
1	A	2090	LYS
3	C	786	LYS
3	C	1008	LYS
3	C	1242	ARG
4	D	220	LYS
4	D	227	ARG
4	D	295	LYS
6	F	47	ARG
6	F	151	LYS
8	H	7	ARG
4	K	227	ARG
4	K	295	LYS
5	L	132	MET
6	M	47	ARG
10	Q	78	LYS

Sometimes sidechains can be flipped to improve hydrogen bonding and reduce clashes. All (1) such sidechains are listed below:

Mol	Chain	Res	Type
1	A	2106	HIS

5.3.3 RNA [i](#)

There are no RNA molecules in this entry.

5.4 Non-standard residues in protein, DNA, RNA chains [i](#)

There are no non-standard protein/DNA/RNA residues in this entry.

5.5 Carbohydrates [i](#)

There are no monosaccharides in this entry.

5.6 Ligand geometry [i](#)

Of 7 ligands modelled in this entry, 2 are monoatomic - leaving 5 for Mogul analysis.

In the following table, the Counts columns list the number of bonds (or angles) for which Mogul statistics could be retrieved, the number of bonds (or angles) that are observed in the model and the number of bonds (or angles) that are defined in the Chemical Component Dictionary. The Link column lists molecule types, if any, to which the group is linked. The Z score for a bond length (or angle) is the number of standard deviations the observed value is removed from the expected value. A bond length (or angle) with $|Z| > 2$ is considered an outlier worth inspection. RMSZ is the root-mean-square of all Z scores of the bond lengths (or angles).

Mol	Type	Chain	Res	Link	Bond lengths			Bond angles		
					Counts	RMSZ	# $ Z > 2$	Counts	RMSZ	# $ Z > 2$
15	GDP	E	401	-	24,30,30	0.92	1 (4%)	30,47,47	1.20	3 (10%)
12	IHP	A	2601	-	36,36,36	1.47	6 (16%)	54,60,60	0.64	1 (1%)
15	GDP	L	401	-	24,30,30	0.93	1 (4%)	30,47,47	1.21	3 (10%)
13	GTP	D	401	14	26,34,34	1.18	2 (7%)	32,54,54	1.62	6 (18%)
13	GTP	K	401	14	26,34,34	1.16	2 (7%)	32,54,54	1.58	6 (18%)

In the following table, the Chirals column lists the number of chiral outliers, the number of chiral centers analysed, the number of these observed in the model and the number defined in the Chemical Component Dictionary. Similar counts are reported in the Torsion and Rings columns. '·' means no outliers of that kind were identified.

Mol	Type	Chain	Res	Link	Chirals	Torsions	Rings
15	GDP	E	401	-	-	1/12/32/32	0/3/3/3
12	IHP	A	2601	-	-	9/30/54/54	0/1/1/1
15	GDP	L	401	-	-	3/12/32/32	0/3/3/3
13	GTP	D	401	14	-	1/18/38/38	0/3/3/3
13	GTP	K	401	14	-	5/18/38/38	0/3/3/3

All (12) bond length outliers are listed below:

Mol	Chain	Res	Type	Atoms	Z	Observed(Å)	Ideal(Å)
13	K	401	GTP	C5-C6	-4.12	1.39	1.47
13	D	401	GTP	C5-C6	-4.10	1.39	1.47
12	A	2601	IHP	P3-O13	3.59	1.66	1.59
12	A	2601	IHP	P4-O14	3.14	1.65	1.59
12	A	2601	IHP	P2-O12	3.07	1.65	1.59
12	A	2601	IHP	P6-O16	3.07	1.65	1.59
12	A	2601	IHP	P1-O11	3.01	1.65	1.59
12	A	2601	IHP	P5-O15	2.99	1.65	1.59
15	L	401	GDP	C6-N1	-2.63	1.34	1.37
15	E	401	GDP	C6-N1	-2.31	1.34	1.37
13	K	401	GTP	C2-N3	2.13	1.38	1.33
13	D	401	GTP	C2-N3	2.05	1.38	1.33

All (19) bond angle outliers are listed below:

Mol	Chain	Res	Type	Atoms	Z	Observed(°)	Ideal(°)
13	D	401	GTP	PB-O3B-PG	-4.25	118.23	132.83
13	K	401	GTP	PB-O3B-PG	-3.90	119.44	132.83
13	K	401	GTP	PA-O3A-PB	-3.73	120.03	132.83
13	D	401	GTP	PA-O3A-PB	-3.61	120.42	132.83
15	E	401	GDP	PA-O3A-PB	-3.52	120.75	132.83
15	L	401	GDP	PA-O3A-PB	-3.47	120.90	132.83
13	D	401	GTP	C5-C6-N1	3.47	120.08	113.95
13	K	401	GTP	C5-C6-N1	3.29	119.77	113.95
13	K	401	GTP	C8-N7-C5	3.23	109.14	102.99
13	D	401	GTP	C2-N1-C6	-3.15	119.29	125.10
13	D	401	GTP	C8-N7-C5	3.15	108.99	102.99
13	K	401	GTP	C2-N1-C6	-3.04	119.50	125.10
12	A	2601	IHP	O13-C3-C2	2.62	114.87	108.69
15	E	401	GDP	C8-N7-C5	2.47	107.70	102.99
15	E	401	GDP	C5-C6-N1	2.42	118.22	113.95
15	L	401	GDP	C8-N7-C5	2.41	107.58	102.99
15	L	401	GDP	C5-C6-N1	2.36	118.12	113.95

Continued on next page...

Continued from previous page...

Mol	Chain	Res	Type	Atoms	Z	Observed(°)	Ideal(°)
13	K	401	GTP	O6-C6-C5	-2.28	119.92	124.37
13	D	401	GTP	O6-C6-C5	-2.19	120.10	124.37

There are no chirality outliers.

All (19) torsion outliers are listed below:

Mol	Chain	Res	Type	Atoms
12	A	2601	IHP	C2-C3-O13-P3
12	A	2601	IHP	C3-C4-O14-P4
12	A	2601	IHP	C5-C4-O14-P4
12	A	2601	IHP	C1-C6-O16-P6
12	A	2601	IHP	C5-C6-O16-P6
12	A	2601	IHP	C5-O15-P5-O25
12	A	2601	IHP	C6-O16-P6-O46
13	K	401	GTP	C5'-O5'-PA-O3A
15	E	401	GDP	C5'-O5'-PA-O1A
15	L	401	GDP	C5'-O5'-PA-O1A
15	L	401	GDP	PA-O3A-PB-O2B
13	K	401	GTP	C3'-C4'-C5'-O5'
12	A	2601	IHP	C4-C5-O15-P5
13	K	401	GTP	PA-O3A-PB-O2B
12	A	2601	IHP	C6-C1-O11-P1
13	D	401	GTP	C5'-O5'-PA-O3A
15	L	401	GDP	C5'-O5'-PA-O3A
13	K	401	GTP	PA-O3A-PB-O1B
13	K	401	GTP	C5'-O5'-PA-O2A

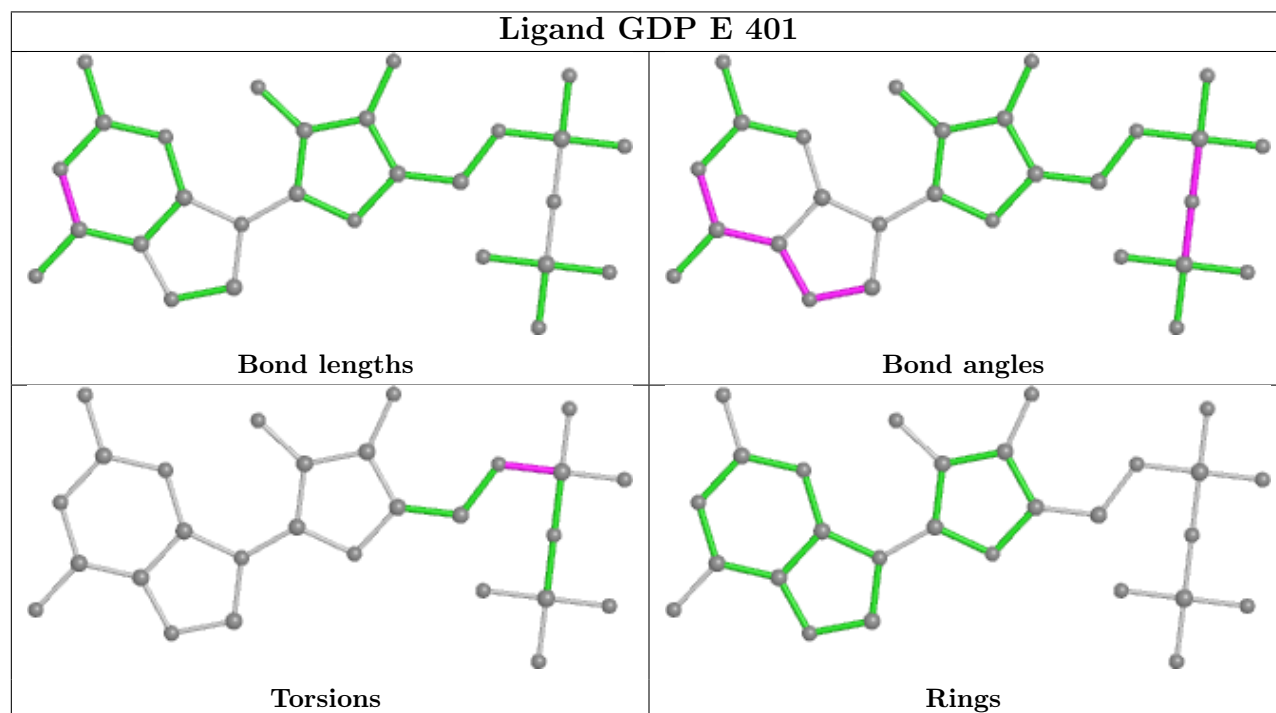
There are no ring outliers.

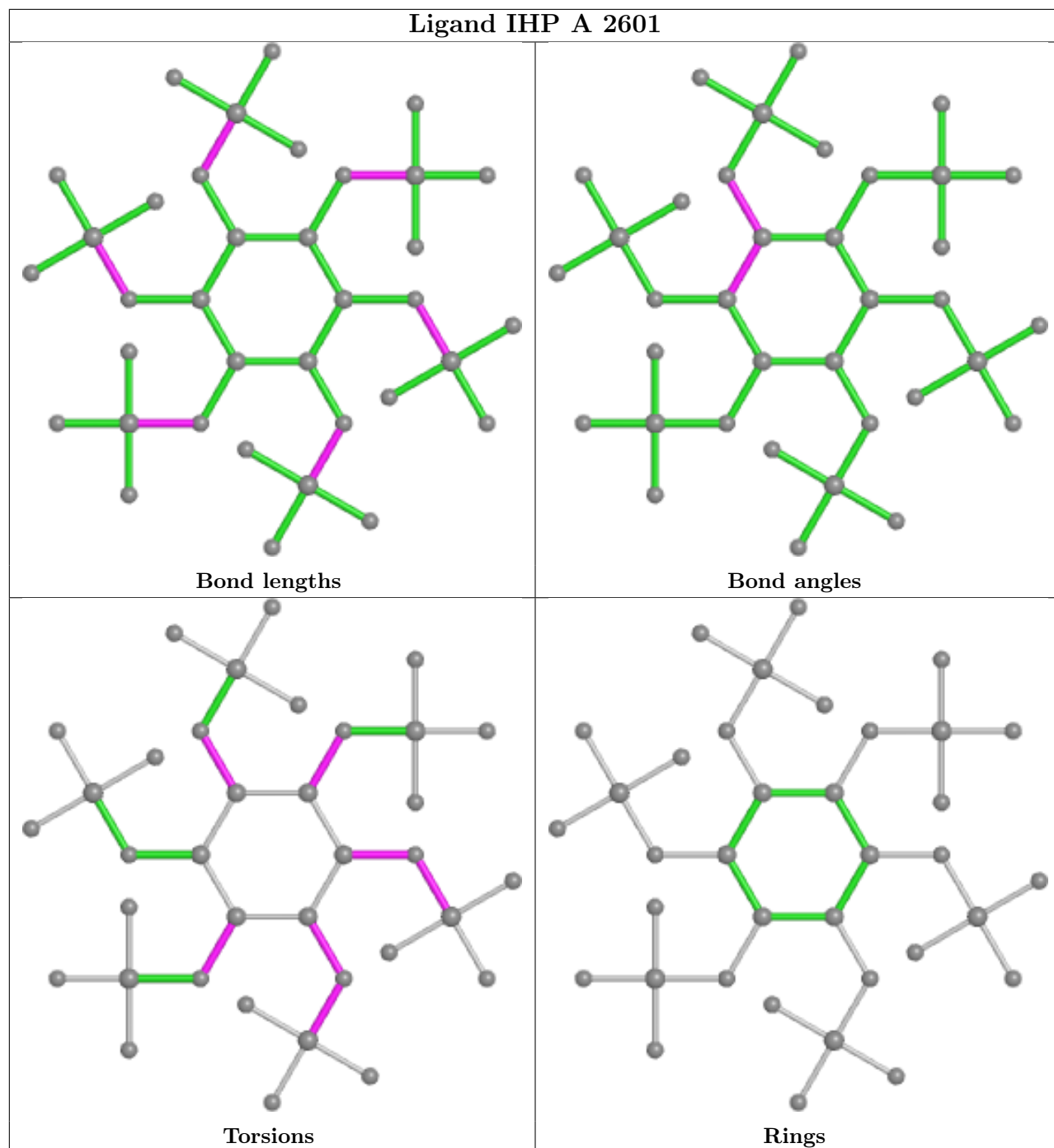
2 monomers are involved in 4 short contacts:

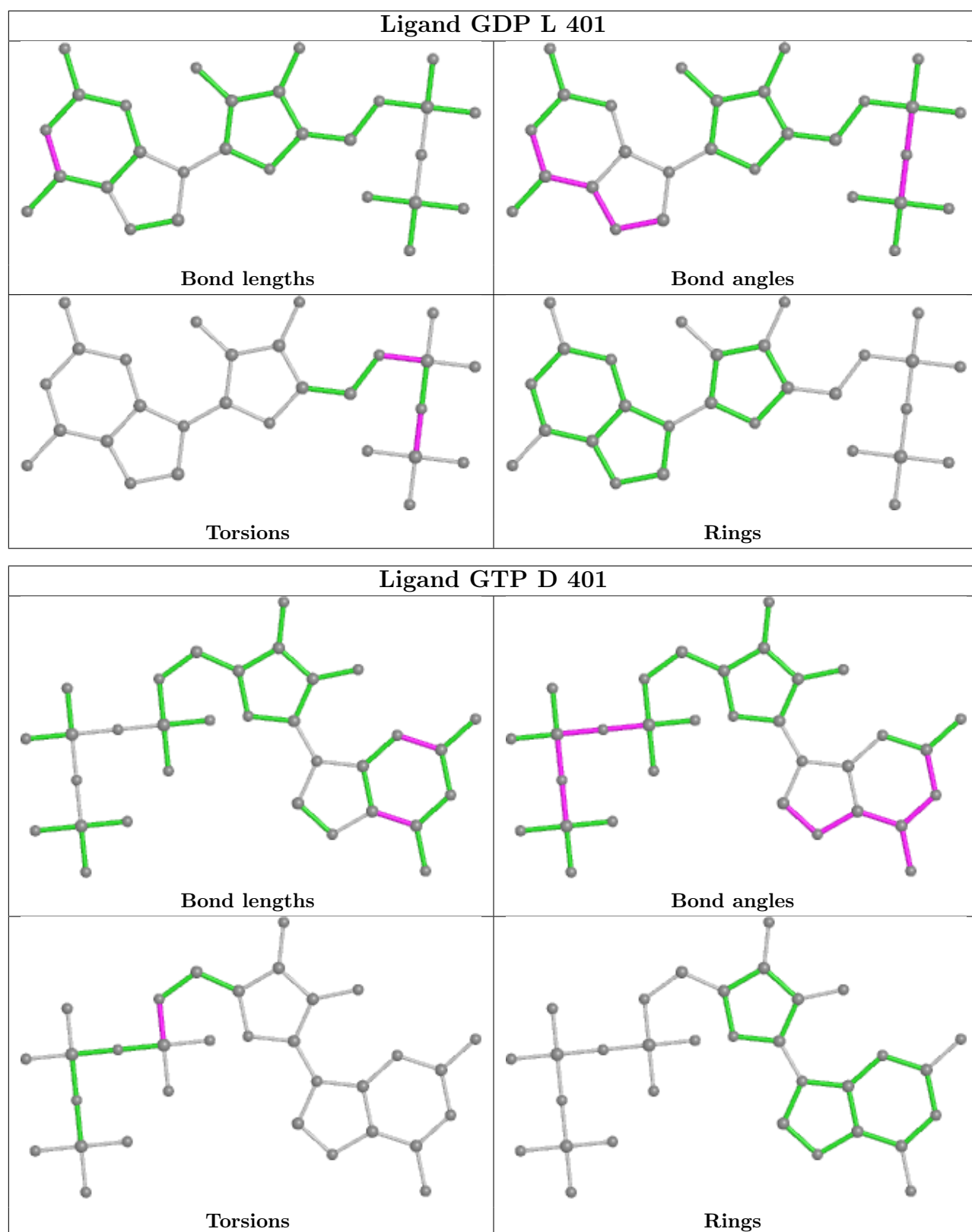
Mol	Chain	Res	Type	Clashes	Symm-Clashes
12	A	2601	IHP	1	0
15	L	401	GDP	3	0

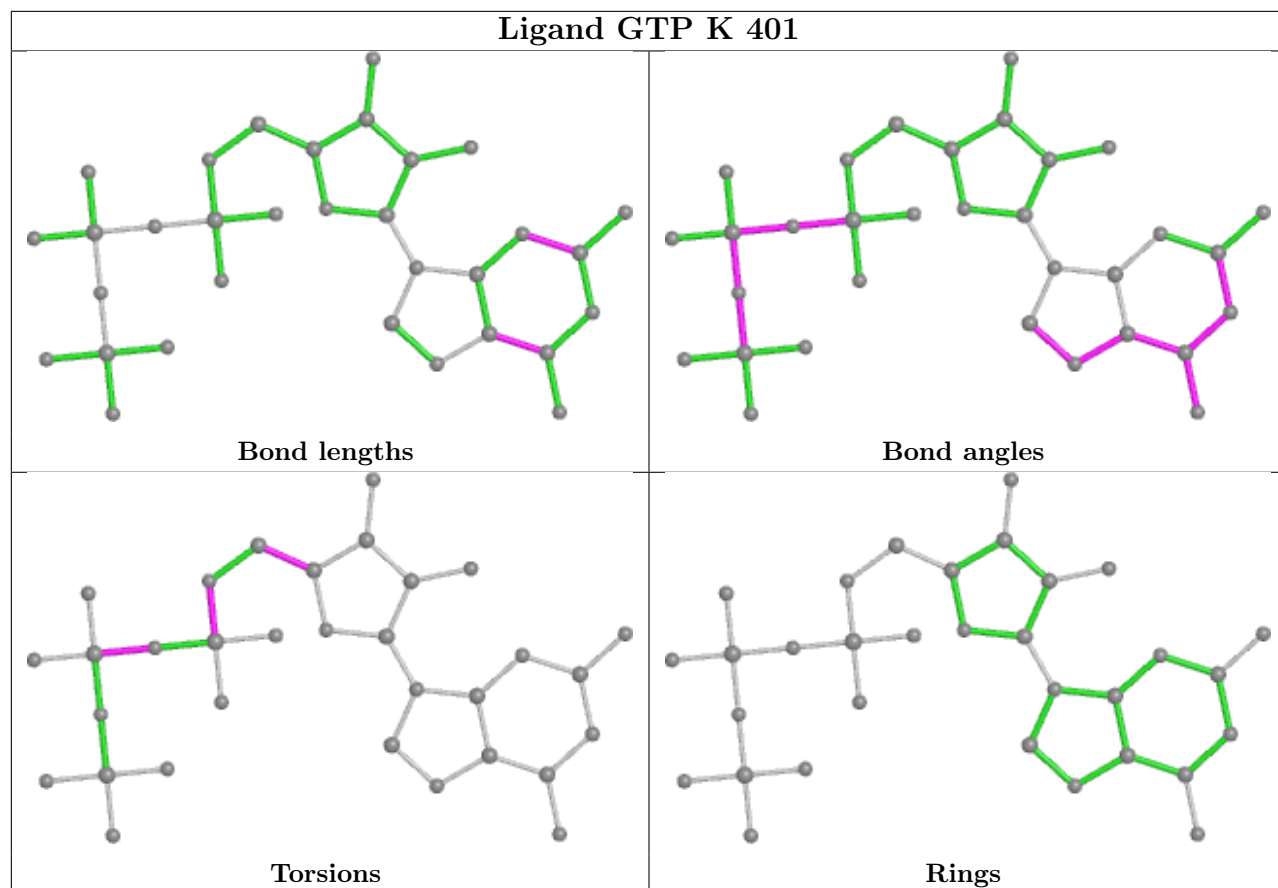
The following is a two-dimensional graphical depiction of Mogul quality analysis of bond lengths, bond angles, torsion angles, and ring geometry for all instances of the Ligand of Interest. In addition, ligands with molecular weight > 250 and outliers as shown on the validation Tables will also be included. For torsion angles, if less than 5% of the Mogul distribution of torsion angles is within 10 degrees of the torsion angle in question, then that torsion angle is considered an outlier. Any bond that is central to one or more torsion angles identified as an outlier by Mogul will be highlighted in the graph. For rings, the root-mean-square deviation (RMSD) between the ring in question and similar rings identified by Mogul is calculated over all ring torsion angles. If the

average RMSD is greater than 60 degrees and the minimal RMSD between the ring in question and any Mogul-identified rings is also greater than 60 degrees, then that ring is considered an outlier. The outliers are highlighted in purple. The color gray indicates Mogul did not find sufficient equivalents in the CSD to analyse the geometry.









5.7 Other polymers [\(i\)](#)

There are no such residues in this entry.

5.8 Polymer linkage issues [\(i\)](#)

There are no chain breaks in this entry.

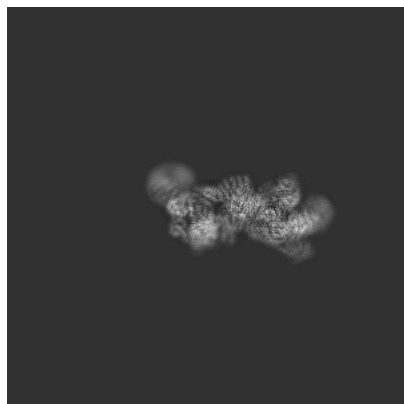
6 Map visualisation [i](#)

This section contains visualisations of the EMDB entry EMD-26857. These allow visual inspection of the internal detail of the map and identification of artifacts.

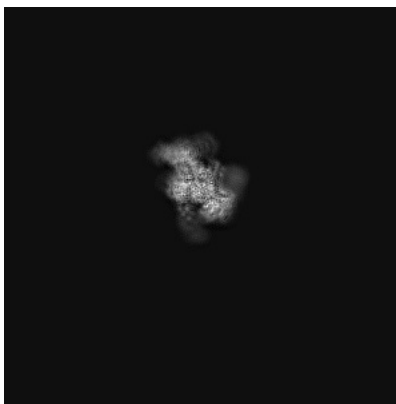
Images derived from a raw map, generated by summing the deposited half-maps, are presented below the corresponding image components of the primary map to allow further visual inspection and comparison with those of the primary map.

6.1 Orthogonal projections [i](#)

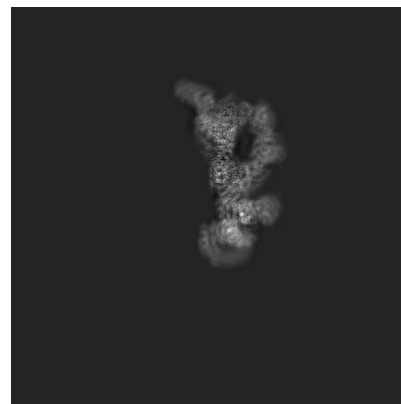
6.1.1 Primary map



X

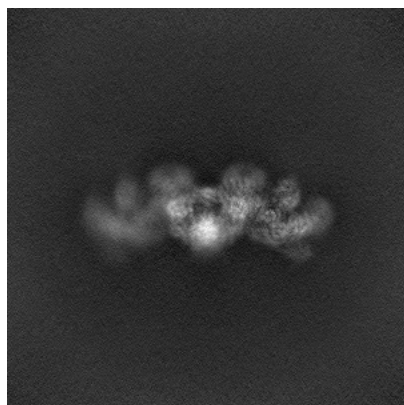


Y

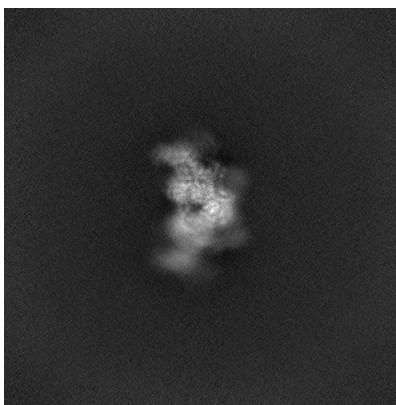


Z

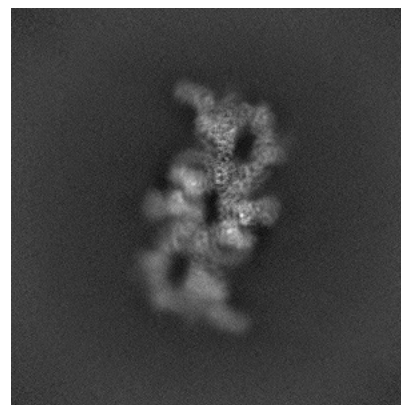
6.1.2 Raw map



X



Y



Z

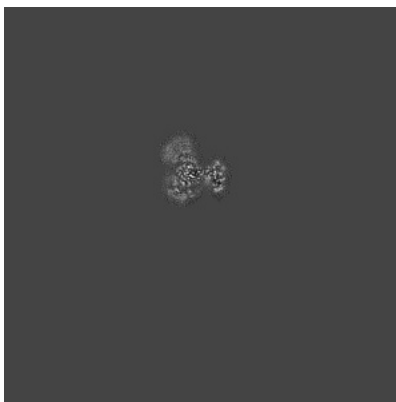
The images above show the map projected in three orthogonal directions.

6.2 Central slices [i](#)

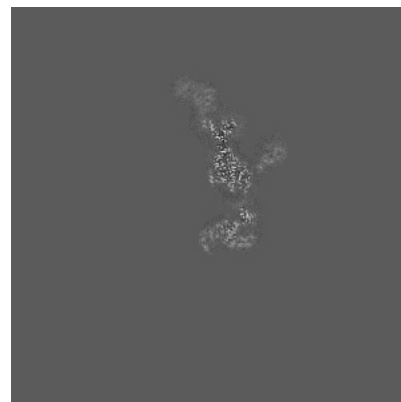
6.2.1 Primary map



X Index: 294



Y Index: 294



Z Index: 294

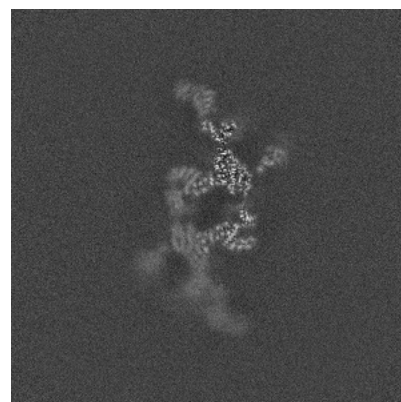
6.2.2 Raw map



X Index: 294



Y Index: 294

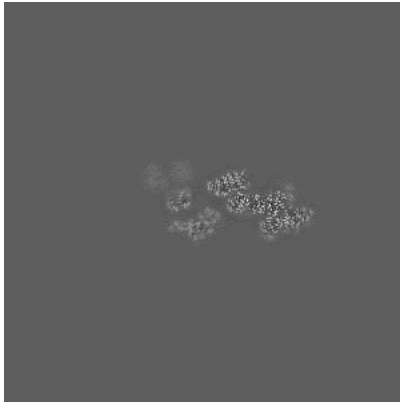


Z Index: 294

The images above show central slices of the map in three orthogonal directions.

6.3 Largest variance slices [i](#)

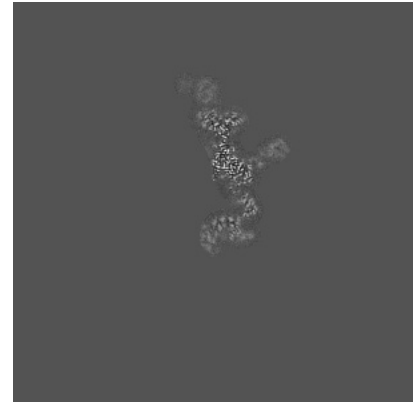
6.3.1 Primary map



X Index: 313

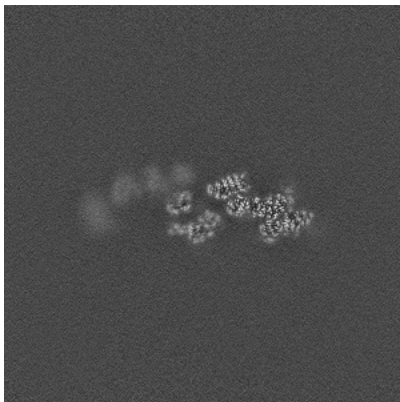


Y Index: 400



Z Index: 300

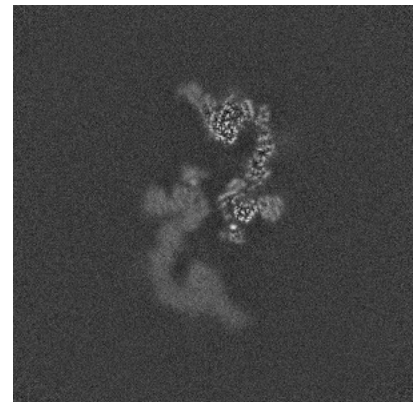
6.3.2 Raw map



X Index: 313



Y Index: 292

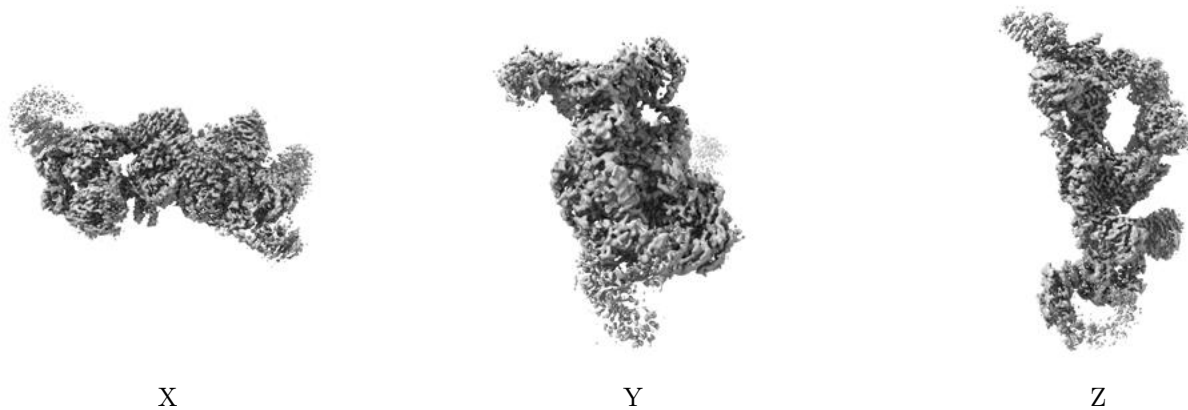


Z Index: 267

The images above show the largest variance slices of the map in three orthogonal directions.

6.4 Orthogonal surface views [i](#)

6.4.1 Primary map



The images above show the 3D surface view of the map at the recommended contour level 0.4. These images, in conjunction with the slice images, may facilitate assessment of whether an appropriate contour level has been provided.

6.4.2 Raw map



These images show the 3D surface of the raw map. The raw map's contour level was selected so that its surface encloses the same volume as the primary map does at its recommended contour level.

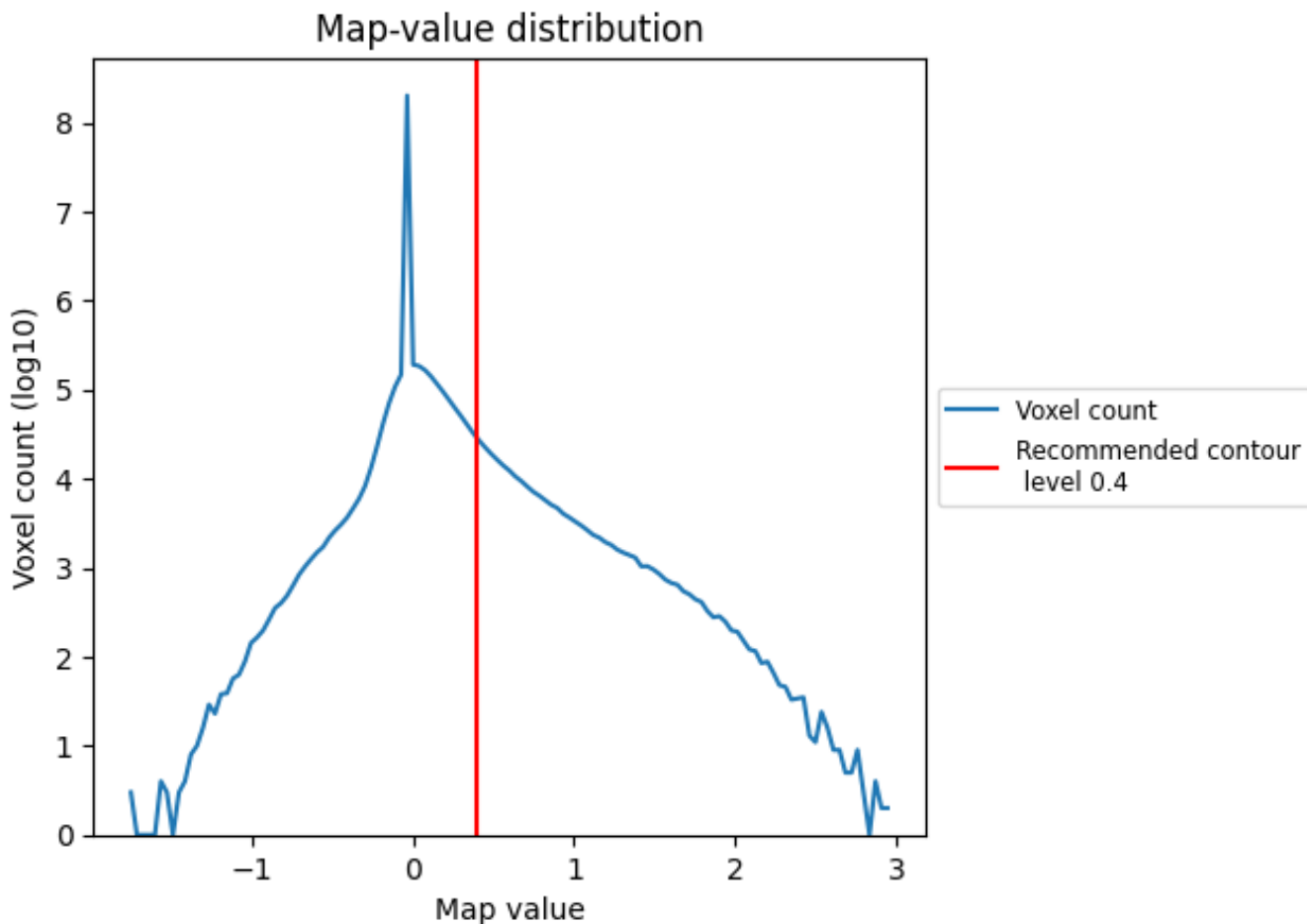
6.5 Mask visualisation [i](#)

This section was not generated. No masks/segmentation were deposited.

7 Map analysis [i](#)

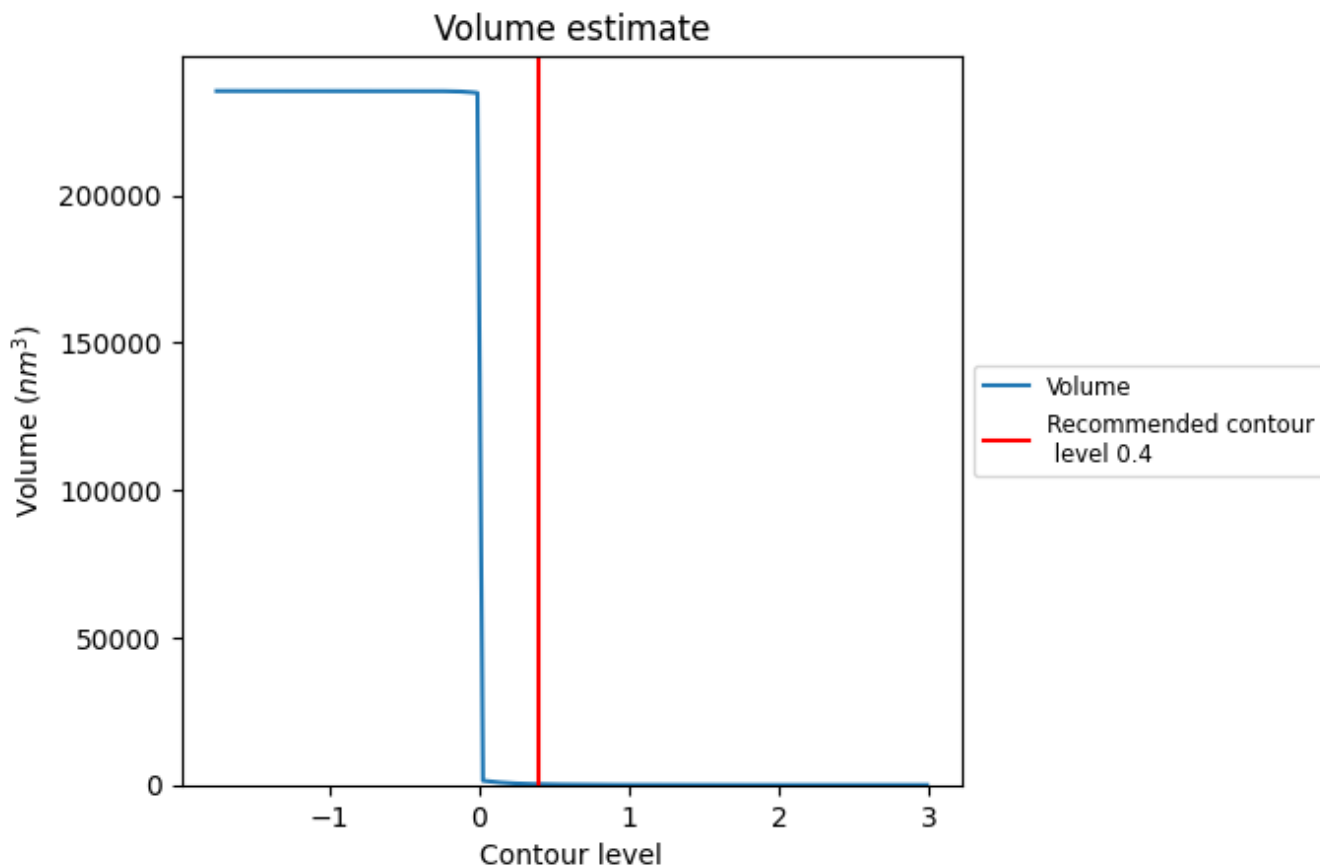
This section contains the results of statistical analysis of the map.

7.1 Map-value distribution [i](#)



The map-value distribution is plotted in 128 intervals along the x-axis. The y-axis is logarithmic. A spike in this graph at zero usually indicates that the volume has been masked.

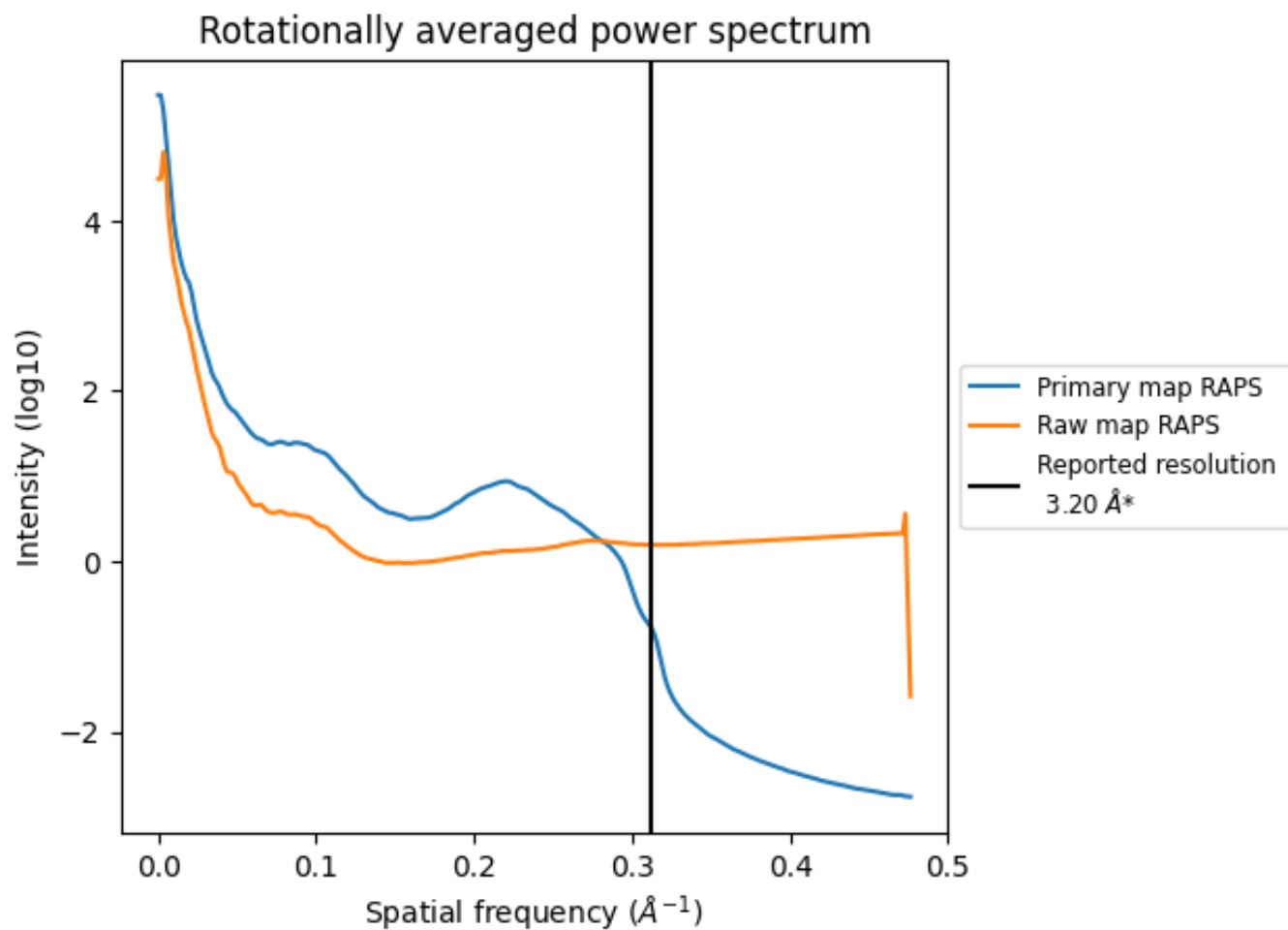
7.2 Volume estimate [\(i\)](#)



The volume at the recommended contour level is 253 nm^3 ; this corresponds to an approximate mass of 229 kDa.

The volume estimate graph shows how the enclosed volume varies with the contour level. The recommended contour level is shown as a vertical line and the intersection between the line and the curve gives the volume of the enclosed surface at the given level.

7.3 Rotationally averaged power spectrum i

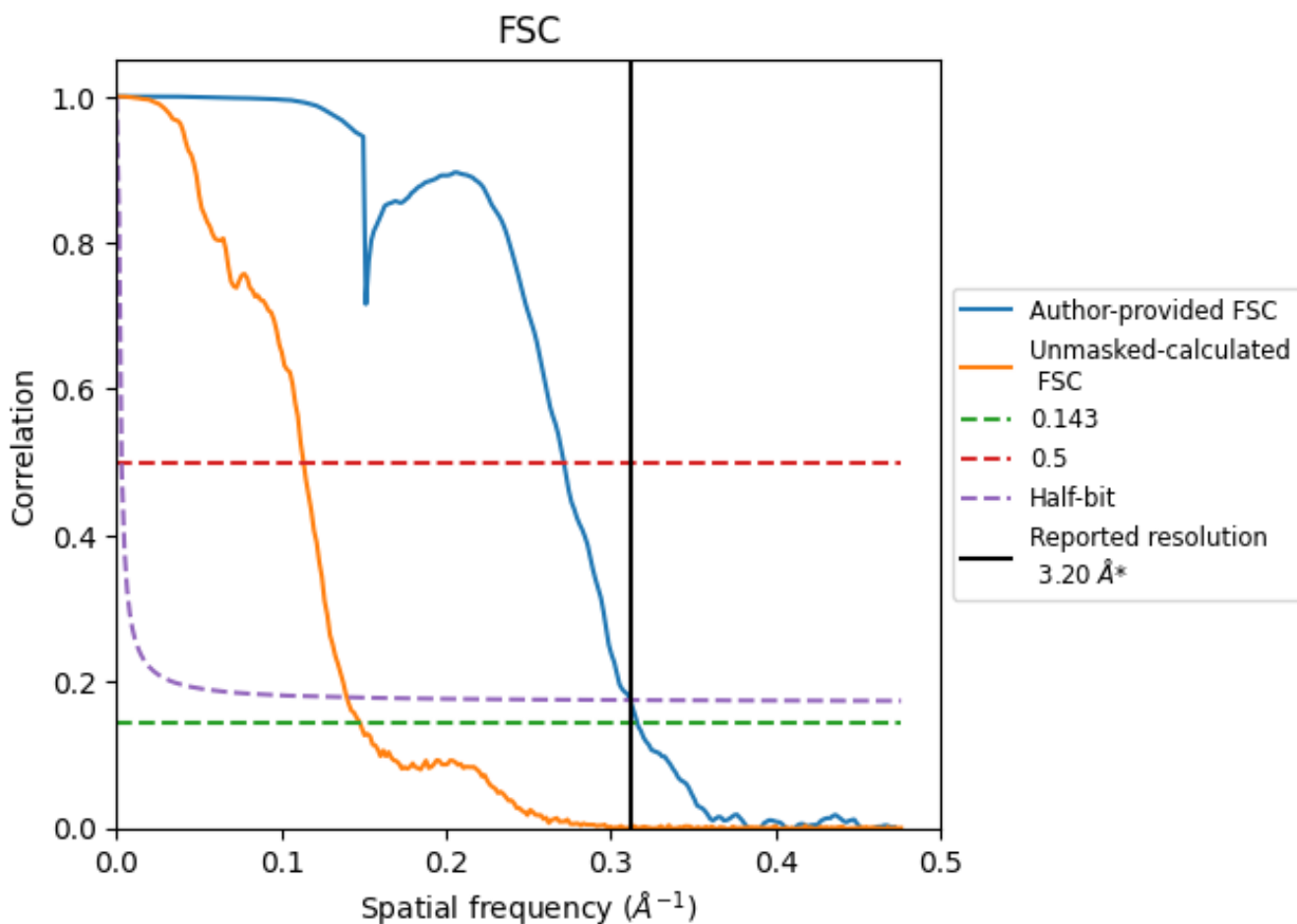


*Reported resolution corresponds to spatial frequency of 0.312 Å⁻¹

8 Fourier-Shell correlation [i](#)

Fourier-Shell Correlation (FSC) is the most commonly used method to estimate the resolution of single-particle and subtomogram-averaged maps. The shape of the curve depends on the imposed symmetry, mask and whether or not the two 3D reconstructions used were processed from a common reference. The reported resolution is shown as a black line. A curve is displayed for the half-bit criterion in addition to lines showing the 0.143 gold standard cut-off and 0.5 cut-off.

8.1 FSC [i](#)



*Reported resolution corresponds to spatial frequency of 0.312 Å⁻¹

8.2 Resolution estimates [i](#)

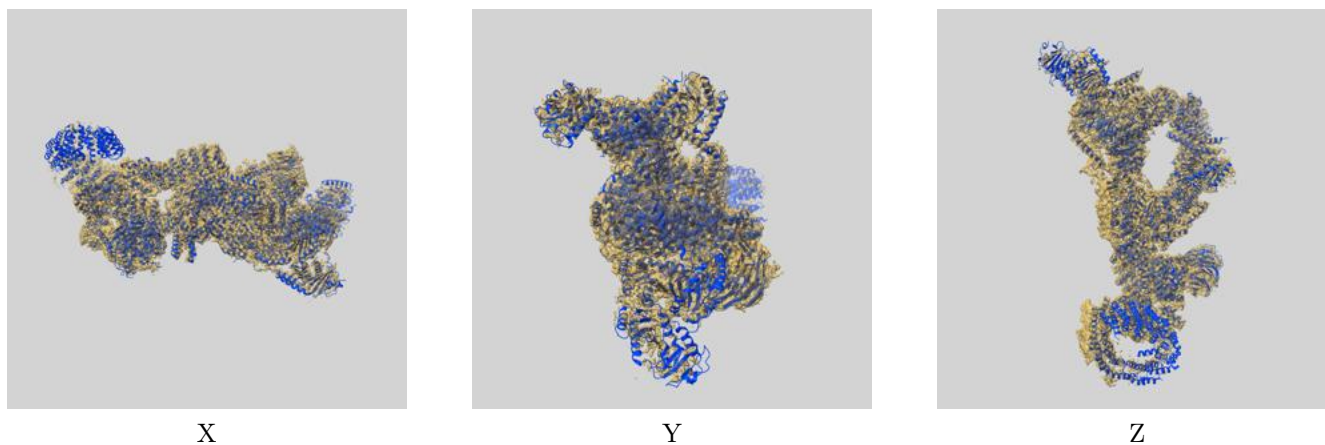
Resolution estimate (Å)	Estimation criterion (FSC cut-off)		
	0.143	0.5	Half-bit
Reported by author	3.20	-	-
Author-provided FSC curve	3.16	3.68	3.21
Unmasked-calculated*	6.77	8.81	7.15

*Resolution estimate based on FSC curve calculated by comparison of deposited half-maps. The value from deposited half-maps intersecting FSC 0.143 CUT-OFF 6.77 differs from the reported value 3.2 by more than 10 %

9 Map-model fit [i](#)

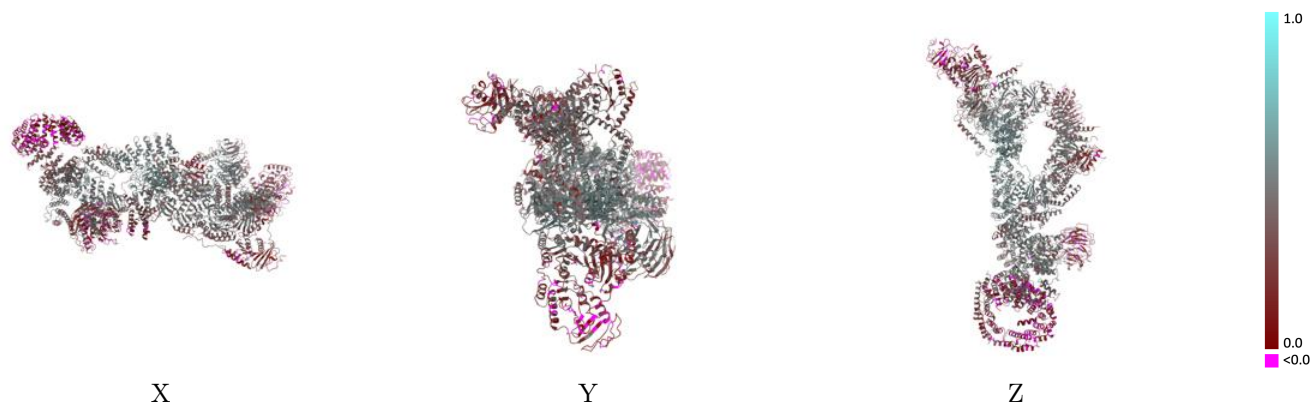
This section contains information regarding the fit between EMDB map EMD-26857 and PDB model 7UXC. Per-residue inclusion information can be found in section 3 on page 9.

9.1 Map-model overlay [i](#)



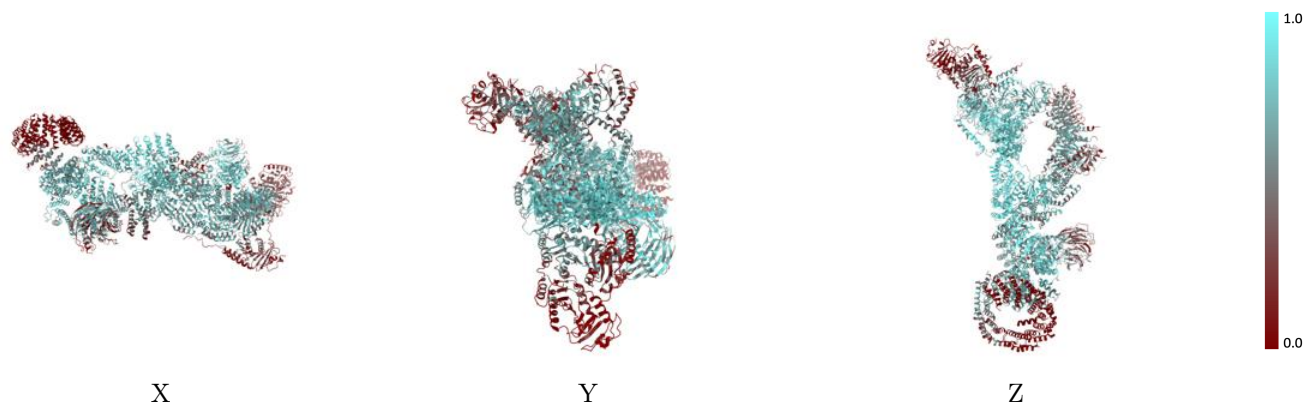
The images above show the 3D surface view of the map at the recommended contour level 0.4 at 50% transparency in yellow overlaid with a ribbon representation of the model coloured in blue. These images allow for the visual assessment of the quality of fit between the atomic model and the map.

9.2 Q-score mapped to coordinate model [i](#)



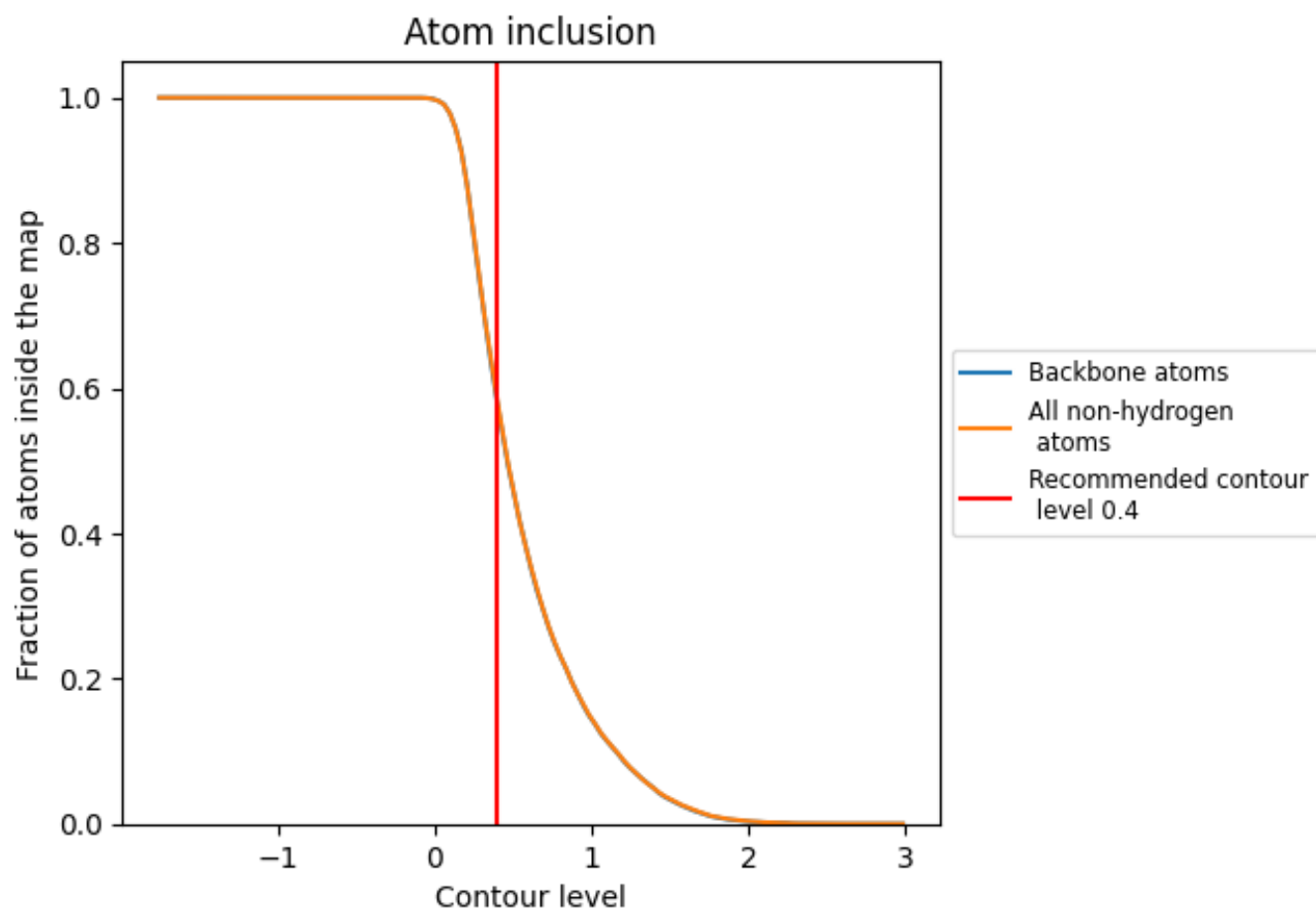
The images above show the model with each residue coloured according to its Q-score. This shows their resolvability in the map with higher Q-score values reflecting better resolvability. Please note: Q-score is calculating the resolvability of atoms, and thus high values are only expected at resolutions at which atoms can be resolved. Low Q-score values may therefore be expected for many entries.

9.3 Atom inclusion mapped to coordinate model [i](#)



The images above show the model with each residue coloured according to its atom inclusion. This shows to what extent they are inside the map at the recommended contour level (0.4).







































9.4 Atom inclusion [i](#)



At the recommended contour level, 58% of all backbone atoms, 58% of all non-hydrogen atoms, are inside the map.

9.5 Map-model fit summary

The table lists the average atom inclusion at the recommended contour level (0.4) and Q-score for the entire model and for each chain.

Chain	Atom inclusion	Q-score
All	 0.5837	 0.3750
A	 0.5806	 0.3560
B	 0.3502	 0.1940
C	 0.8099	 0.4940
D	 0.8030	 0.4950
E	 0.7341	 0.4590
F	 0.1880	 0.1880
G	 0.4816	 0.3070
H	 0.2978	 0.2360
I	 0.0350	 0.1180
J	 0.1470	 0.1810
K	 0.6550	 0.4260
L	 0.5221	 0.3620
M	 0.3132	 0.2710
N	 0.5727	 0.3930
O	 0.5815	 0.3820
P	 0.2083	 0.2050
Q	 0.2665	 0.2480
R	 0.6088	 0.4140

